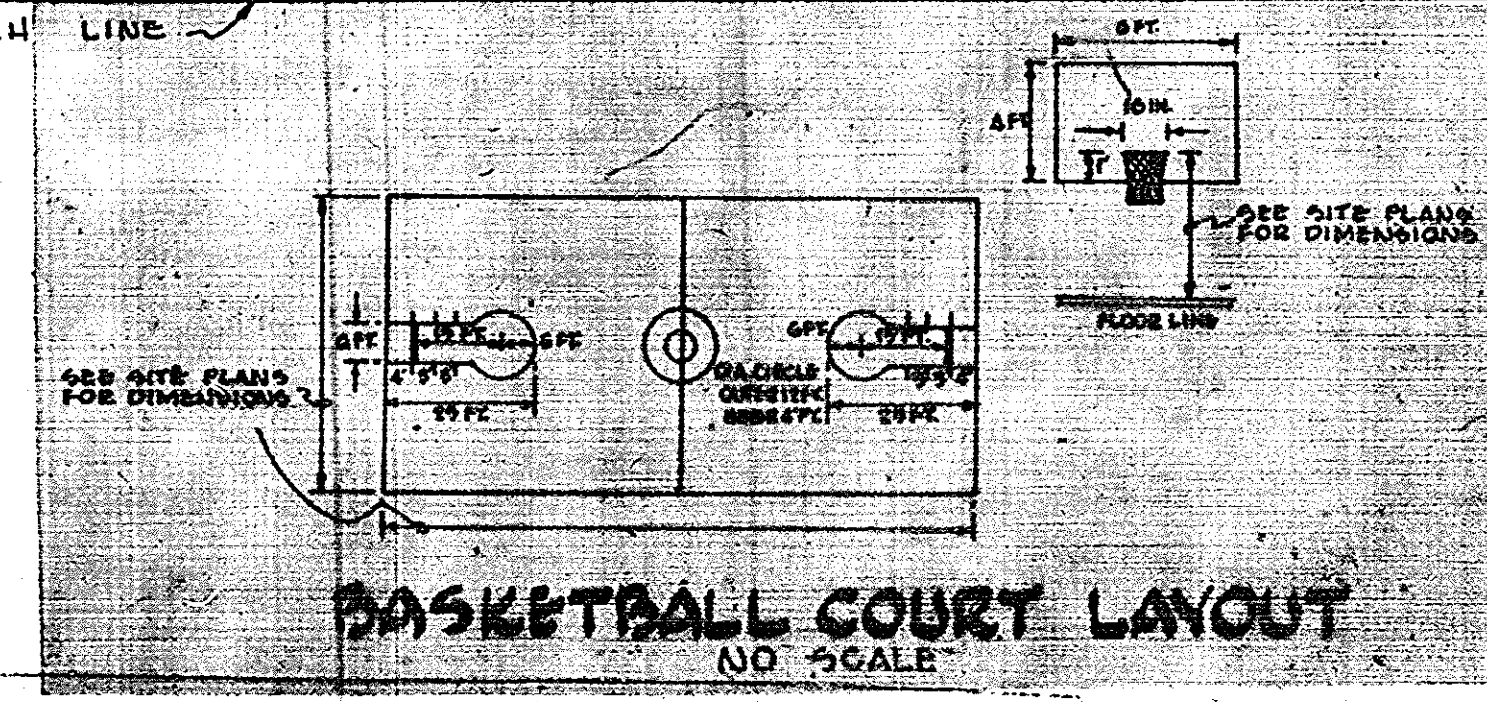
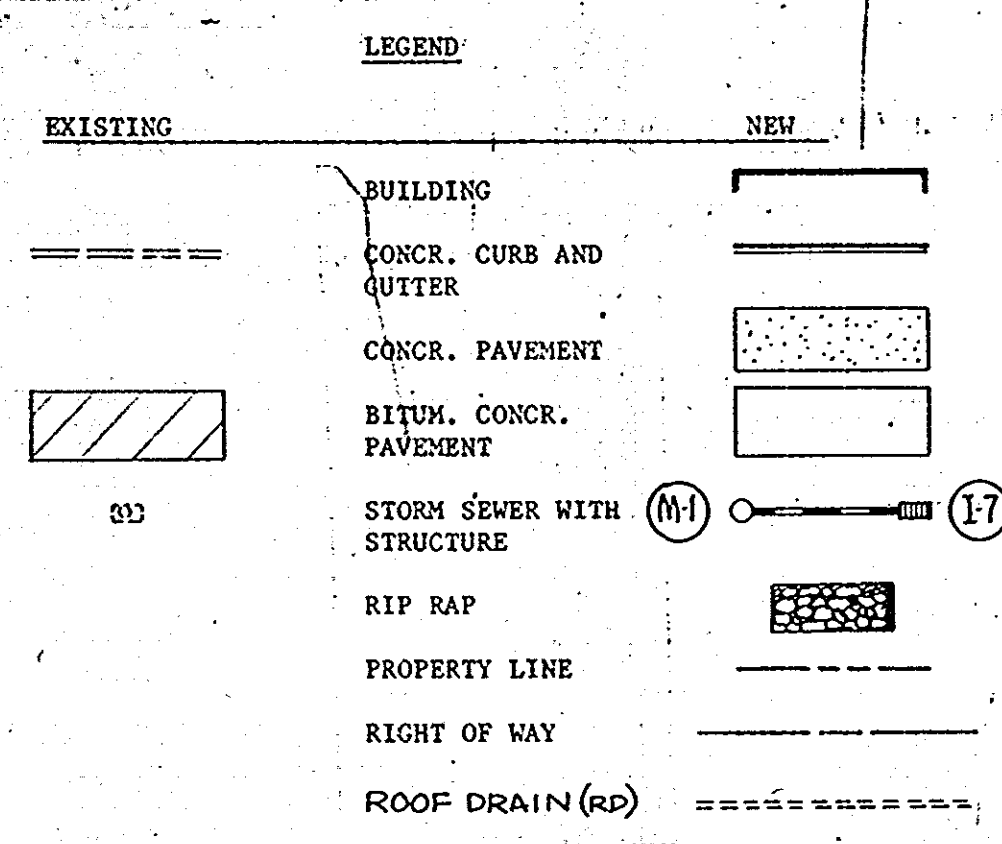


MATCH LINE

MATCH LINE

- PLAY EQUIPMENT IN SAND PLAY AREA
- 1- Magic Carpet Climber
  - 2- Bunker Hill - 2 Way
  - 1- Slide
  - 1- Overhead Ladder
  - 1- Cargo Net
  - 1- Triple Chinning Bar
- for all above, refer to Specs.



EX. MIDDLE SCHOOL

APPROVED FOR PRIVATE DRIVE AND PRIVATE SEWERAGE  
HOWARD COUNTY HEALTH DEPARTMENT

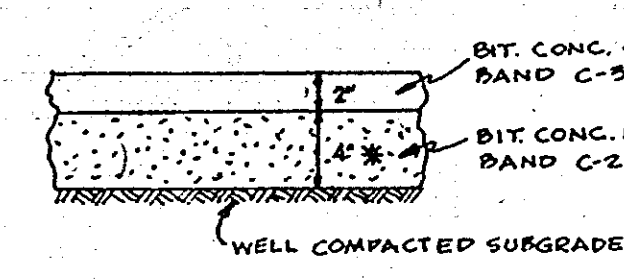
APPROVED FOR PRIVATE DRIVE AND PRIVATE SEWERAGE  
HOWARD COUNTY HEALTH DEPARTMENT

APPROVED FOR PRIVATE DRIVE AND PRIVATE SEWERAGE  
HOWARD COUNTY HEALTH DEPARTMENT

APPROVED FOR PRIVATE DRIVE AND PRIVATE SEWERAGE  
HOWARD COUNTY HEALTH DEPARTMENT

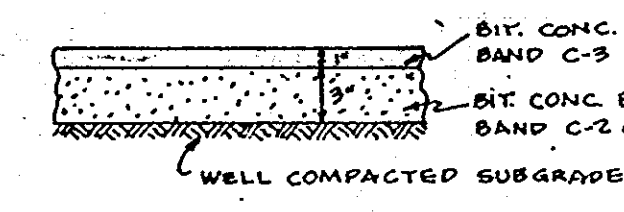
APPROVED FOR PRIVATE DRIVE AND PRIVATE SEWERAGE  
HOWARD COUNTY HEALTH DEPARTMENT

PAVEMENT-ALONG STATE HWY #97



PAVEMENT-ON SITE DRIVES & PARKING LOTS

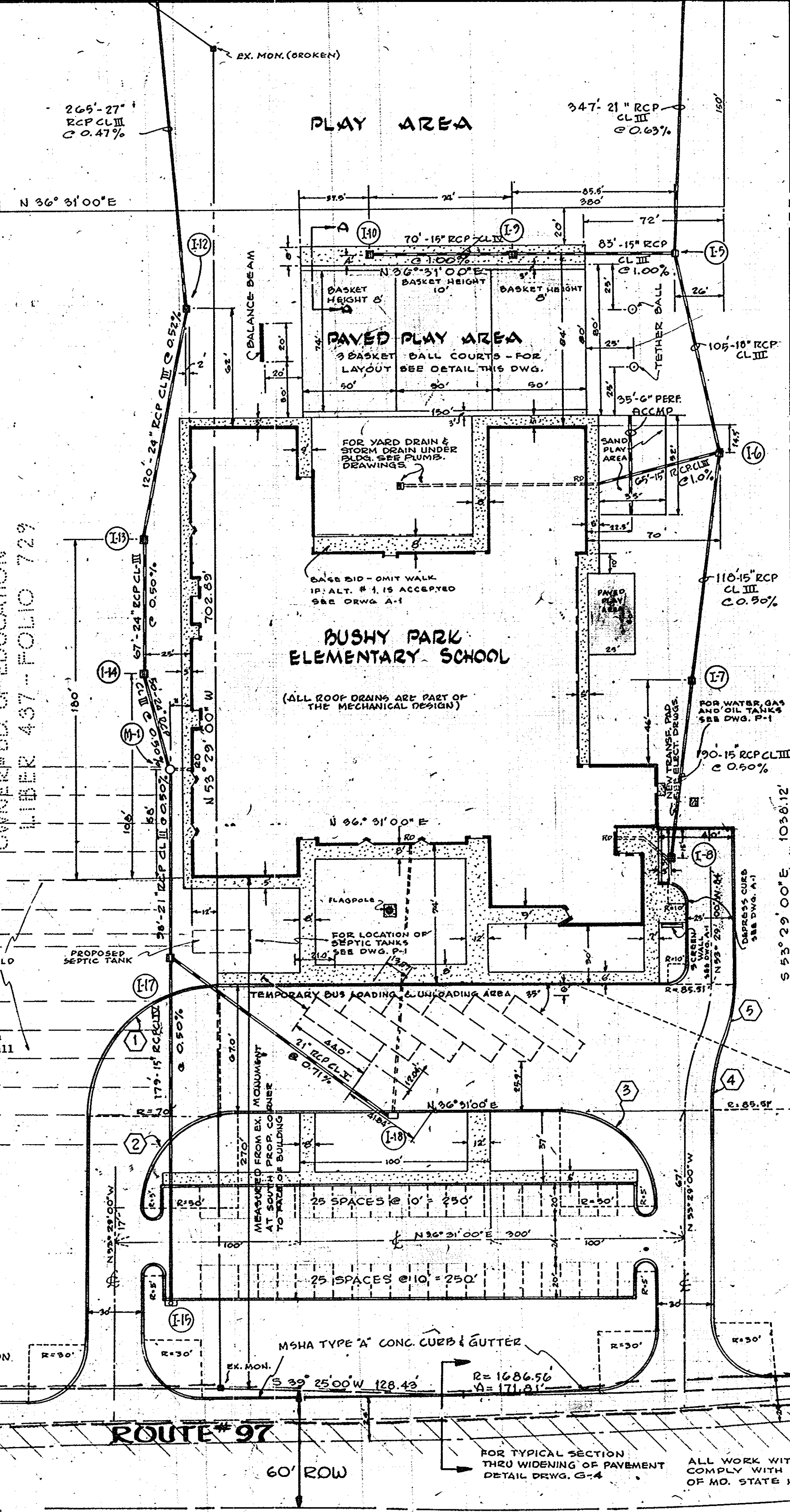
\* Bituminous Concrete Base Course shall be increased to 6" depth for the area of the Bus Exit Drive which is located over the proposed septic field. Care shall be exercised to avoid damage to the drain pipes.



PAVEMENT-ON SITE PLAY AREAS

NOT TO SCALE

FOR ALL PAVEMENT SHOWN ABOVE A TACK COAT IS REQUIRED IN ACCORDANCE WITH SECTION C-21 OF HOWARD COUNTY ROAD CONSTRUCTION CODE.



SITE INFORMATION

OWNER: BOARD OF EDUCATION  
RTE. 32, CLARKSVILLE, MD.

LOCATION: ON RTE. #97

ELECTION DISTRICT: 2<sup>ND</sup>

TAX MAP: #31

PARCEL #: -

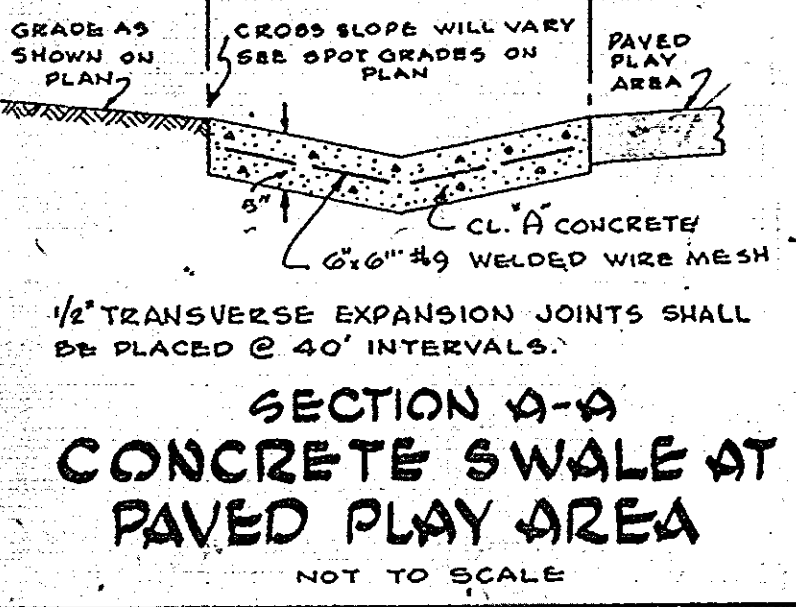
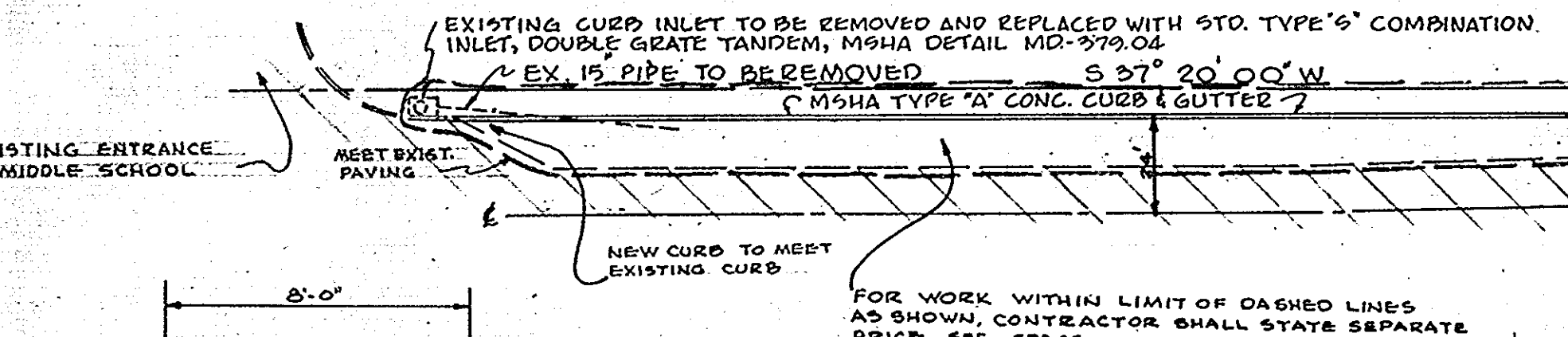
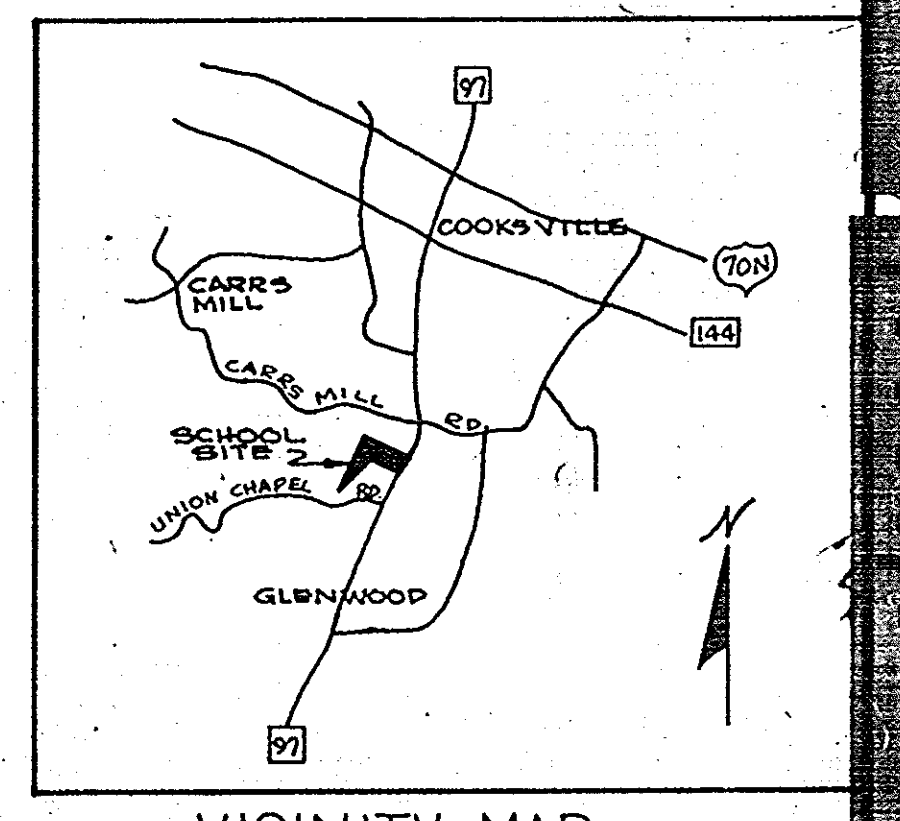
AREA OF PROPERTY: 12.00 ACRES

ZONING: R-40

PROPERTY RECORDED IN LIBER. : -

FOLIO: -

- COMPLETE SET OF SITE DEVELOPMENT DRAWINGS CONSISTS OF:
- G-1 LAYOUT PLAN
  - G-2 LAYOUT PLAN
  - G-3 GRADING PLAN AND SEDIMENT CONTROL
  - G-4 GRADING PLAN AND SEDIMENT CONTROL
  - G-5 STORM SEWER PROFILES
  - G-6 STORM SEWER PROFILES & PROFILE RT. 97
  - SD-1 DRAINAGE DIVIDES
  - SD-2 DRAINAGE DIVIDES
  - ELEVEN (11) PAGES OF STORM DRAIN COMPUTATIONS



Reviewed for Howard S.C.D.

and meets Technical Requirements

Signature: *[Signature]* Date: 2-10-75

U.S. Soil Conservation Service

THIS DEVELOPMENT PLAN IS APPROVED FOR SOIL AND SEDIMENT CONTROL BY THE HOWARD COUNTY CONSERVATION DISTRICT.

Approved: *[Signature]* Date: 2-10-75  
Howard S.C.D.

SCALE: 1"=40'

NO.	DELTA	RADIUS	ARC	TAN	CHORD	CHORD BEARING
1	90-00-00	70.00	109.96	70.00	98.99	N8° 29' 00" W
2	90-00-00	50.00	78.54	50.00	70.71	N8° 29' 00" W
3	90-00-00	50.00	78.54	150.00	70.71	N81° 31' 00" E
4	23-03-50	85.31	34.42	17.45	34.19	N41° 57' 05" W
5	23-03-50	85.31	34.42	17.45	34.19	N41° 57' 05" W

DRIVEWAYS AND PARKING AREAS ARE PRIVATE.

HOWARD COUNTY DESIGN  
 WIFE  
 LAYOUT PLAN  
 BUSHY PARK ELEMENTARY SCHOOL  
 HOWARD COUNTY, MARYLAND  
 SDP75-40

APPROVED FOR PRIVATE WATER AND PRIVATE SEWERAGE SYSTEMS, HOWARD COUNTY HEALTH DEPARTMENT  
 COUNTY HEALTH OFFICER *2/28/75* DATE

APPROVED, HOWARD COUNTY OFFICE OF PLANNING AND ZONING  
 PLANNING DIRECTOR *3-3-75* DATE

CHIEF DIVISION OF LAND DEVELOPMENT  
 TRANSPORTATION PLANNING *3/3/75* DATE

APPROVED FOR PRIVATE WATER, PRIVATE SEWER AND STORM DRAINAGE SYSTEMS AND ROAD WORKS  
 COUNTY DEPARTMENT OF PUBLIC WORKS

*W.O. [Signature]* *2-20-75* DATE  
 DIRECTOR

*P.H. [Signature]* *2-18-75* DATE  
 CHIEF BUREAU OF HIGHWAYS

Reviewed for *Howard* S.C.D. Name

and meets Technical Requirements  
*[Signature]* Date *2-10-75*  
 S. Soil Conservation Service

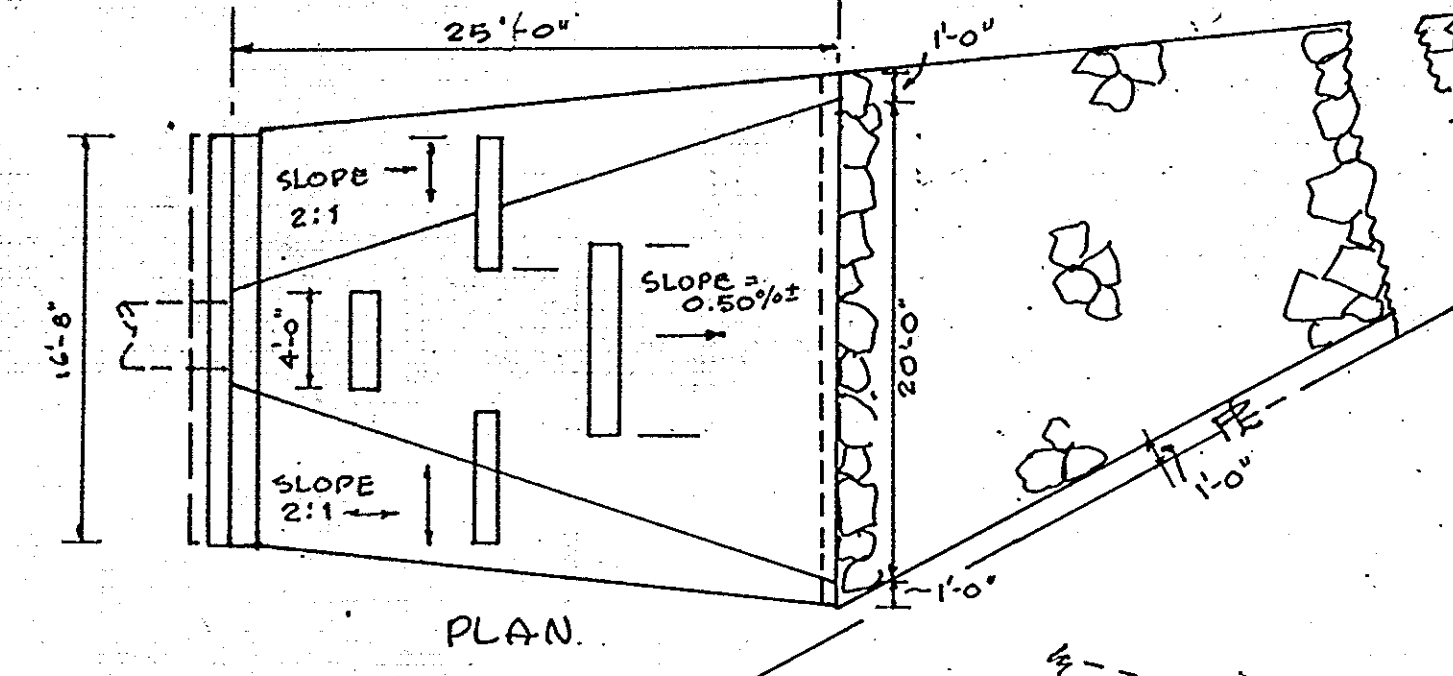
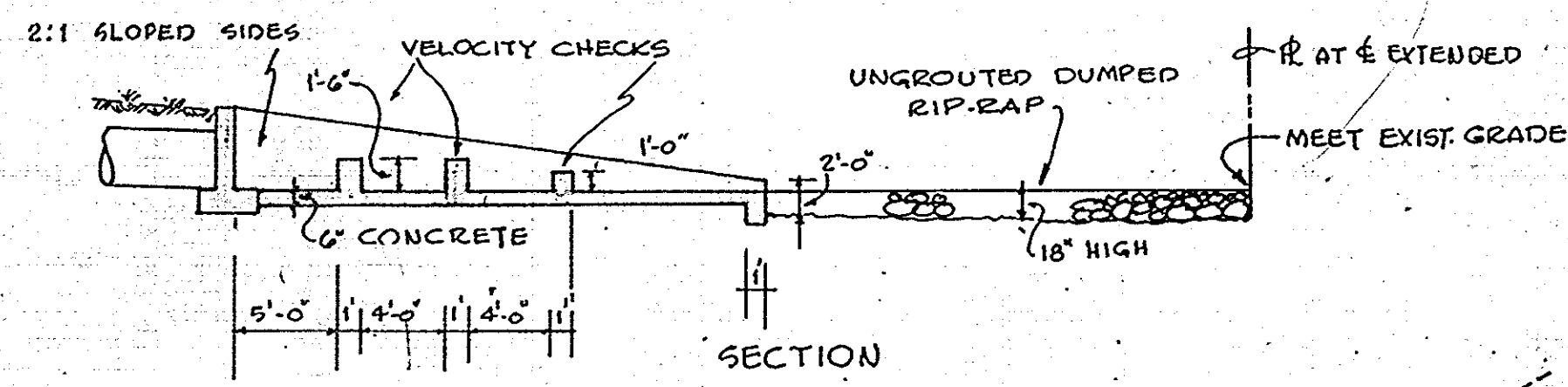
THIS DEVELOPMENT PLAN IS APPROVED FOR SOIL AND SEDIMENT CONTROL BY THE HOWARD SOIL CONSERVATION DISTRICT.

Approved *[Signature]* Date *2-10-75*  
 Howard S.C.D.

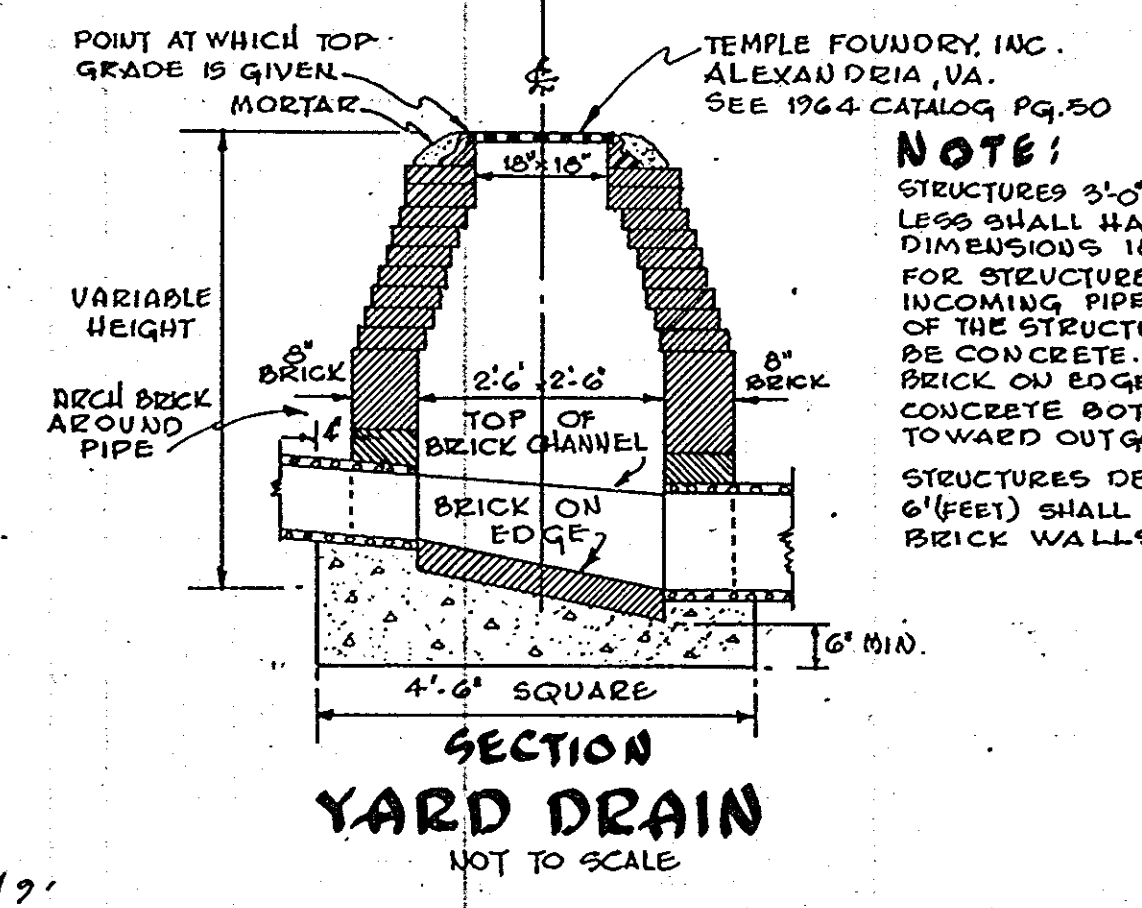
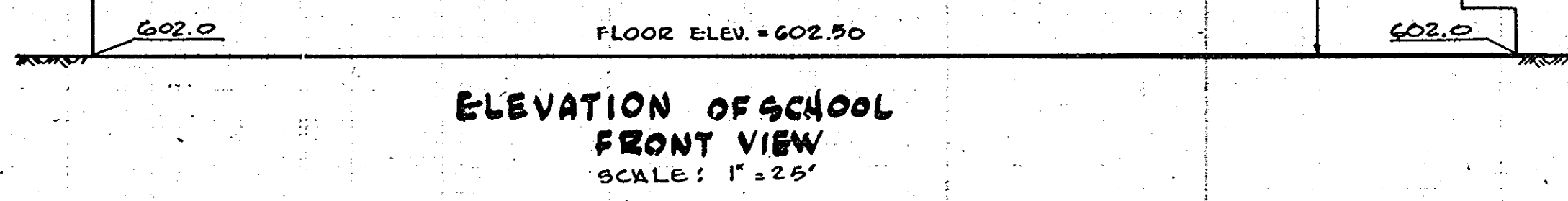
WALTER W. JACOBS  
 LIBER 472  
 FOLIO 394

APPROVED  
 DIVISION OF LAND DEVELOPMENT  
 AND TRANSPORTATION PLANNING  
 HOWARD COUNTY, MARYLAND  
 DATE *1/22/75*  
*[Signature]*

2ND ELECTION DISTRICT  
 OWNER: BOARD OF EDUCATION, RIE, #32, CLARKSVILLE, MD.  
 REVISIONS TO MEET CITY COMMENTS 15-10-74

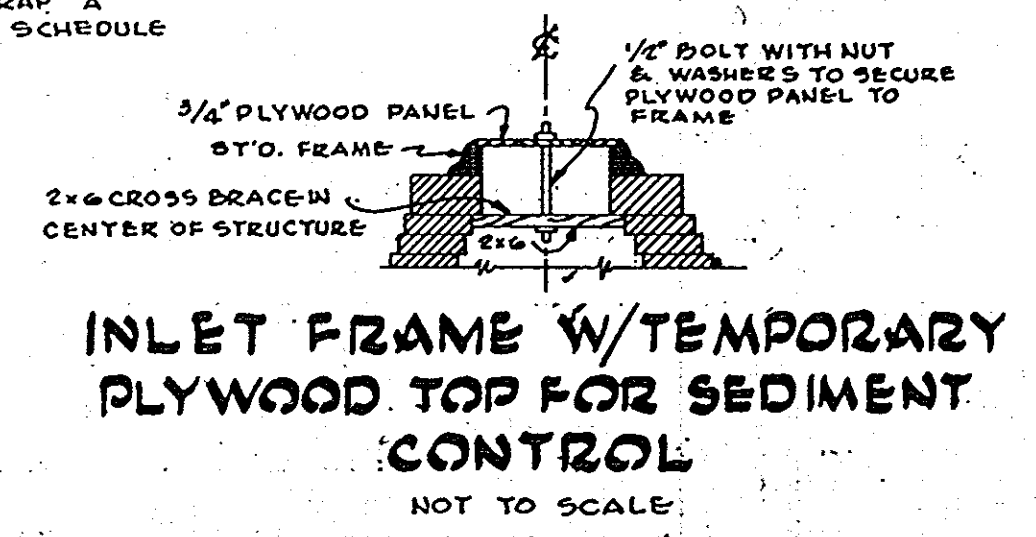
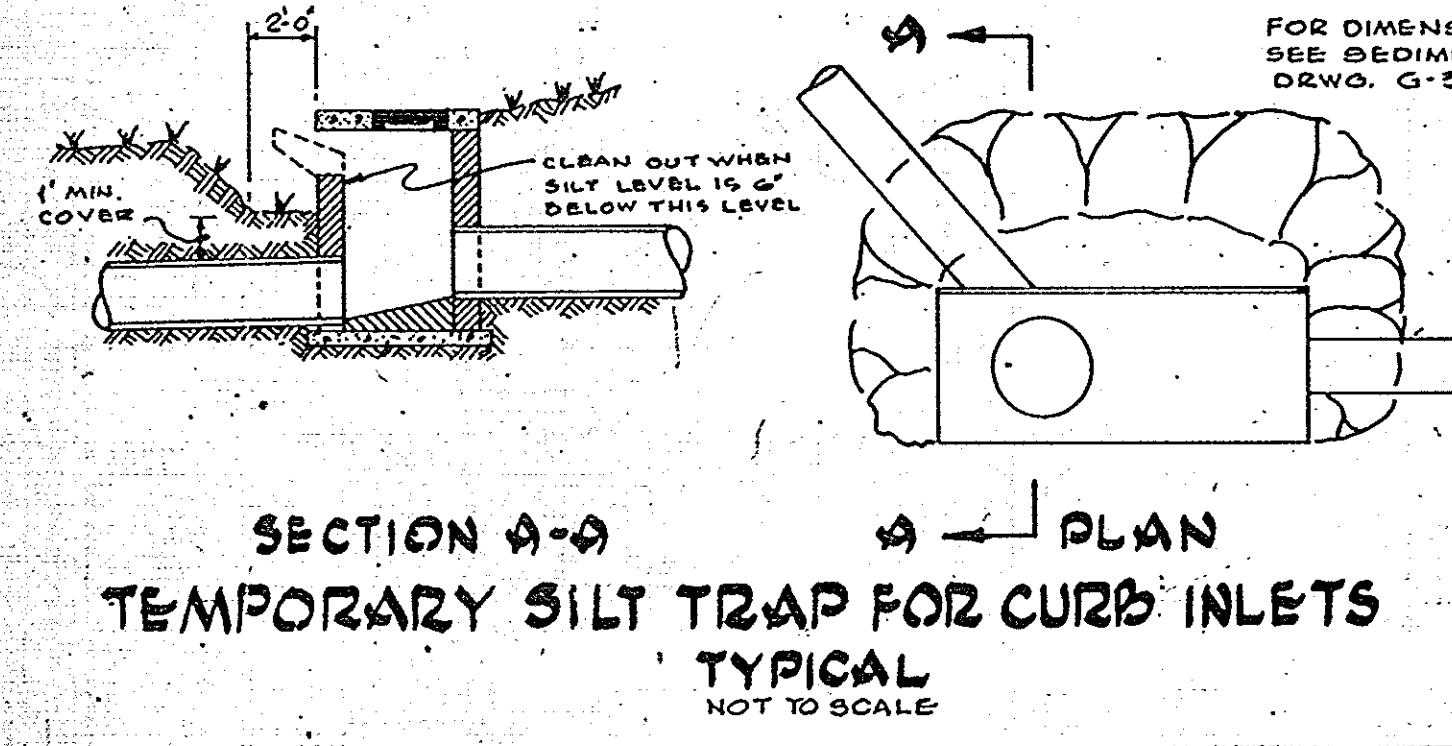
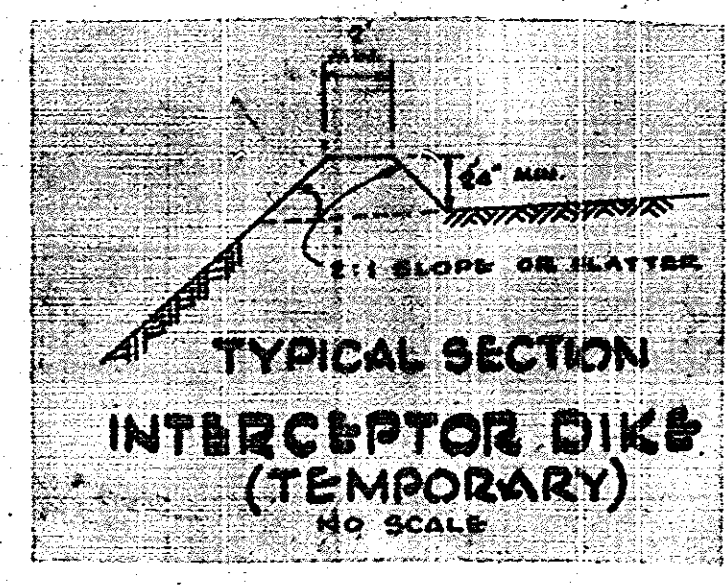
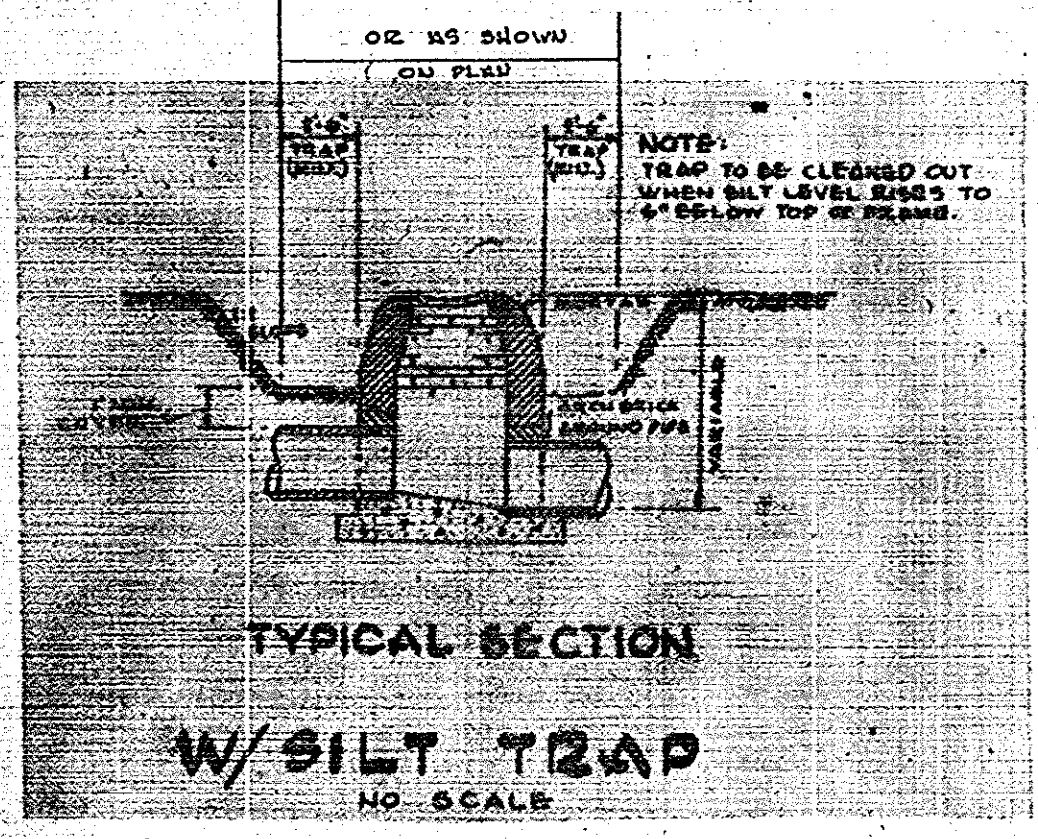


DETAIL OF OUTFALL STRUCTURE-S-1  
 SCALE: 1/8" = 1'-0"

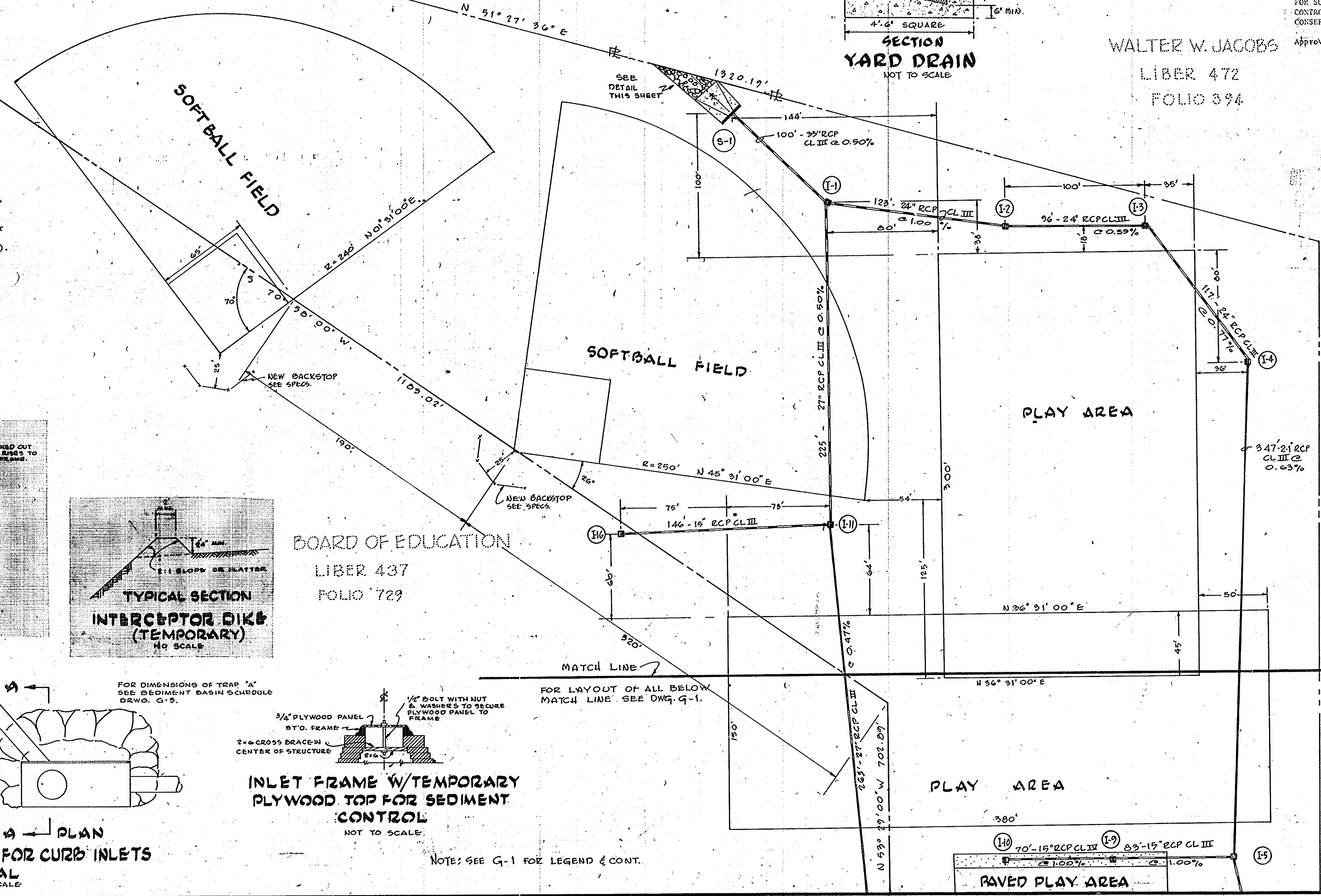


NOTE:  
 STRUCTURES 3'-0" DEEP OR LESS SHALL HAVE INSIDE DIMENSIONS 12" x 10" FOR STRUCTURES WITHOUT INCOMING PIPES BOTTOM OF THE STRUCTURE SHALL BE CONCRETE IN LIEU OF BRICK ON EDGE. SLOPE CONCRETE BOTTOM 2" PER FT. TOWARD OUTGOING PIPE. STRUCTURES DEEPER THAN 6'(FEET) SHALL HAVE 12" BRICK WALLS.

- Notes for Outfall Structure #1
- 1) Min. Weight of ungrouted, dumped stone to be 80 lbs.
  - 2) Reinforce Velocity checks with #4 Bars at 9" o.c. each face. Bars shall be dovetailed and keyed (2" x 4") into 6" thick concrete apron.
  - 3) Concrete apron shall be reinforced with 6" x 6" - #4 wire mesh and shall receive stones or pre-cast concrete blocks similar to Energy Dissipating Gutter (Md. SRA Detail MD-389-11).



NOTES: SEE G-1 FOR LEGEND & CONT.

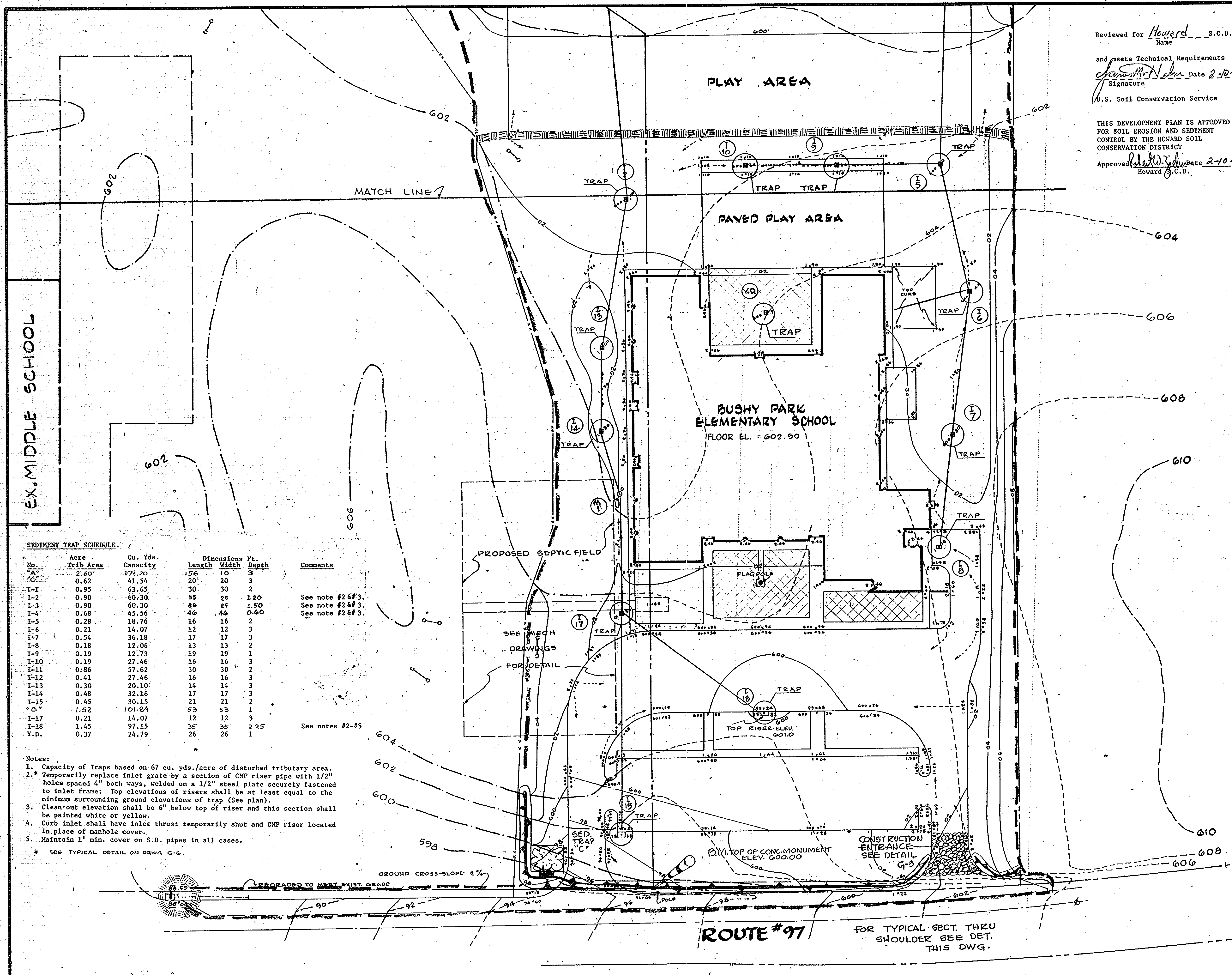


LAYOUT PLAN

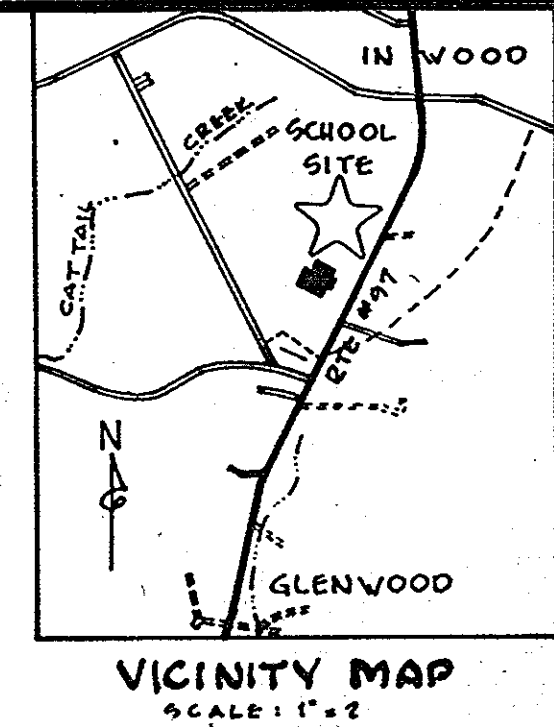
SCALE - 1" = 40'

*[Signature]*

SDP-75-40



Reviewed for Howard s.c.d.  
Name  
and meets Technical Requirements  
*Howard* Date 2-10-75  
Signature  
U.S. Soil Conservation Service  
THIS DEVELOPMENT PLAN IS APPROVED  
FOR SOIL EROSION AND SEDIMENT  
CONTROL BY THE HOWARD SOIL  
CONSERVATION DISTRICT  
Approved *Howard* Date 2-10-75  
Howard s.c.d.



APPROVED FOR PRIVATE WATER PRIVATE SEWER AND STORM DRAINAGE SYSTEMS AND BOARD BOARD COUNTY DEPARTMENT OF PUBLIC WORKS

*Howard* MD 2/28/75  
COUNTY HEALTH OFFICER DATE

APPROVED: BOARD COUNTY OFFICE OF PLANNING AND ZONING

*James J. Hamon* 3-3-75  
PLANNING DIRECTOR DATE

*W.C. Roberts* 3/3/75  
CHIEF DIVISION OF LAND DEVELOPMENT TRANSPORTATION PLANNING DATE

APPROVED FOR PRIVATE WATER PRIVATE SEWER AND STORM DRAINAGE SYSTEMS AND BOARD BOARD COUNTY DEPARTMENT OF PUBLIC WORKS

*W.C. Roberts* 2-20-75  
DATE

*W.C. Roberts* 2/18/75  
DATE

APPROVED  
DIVISION OF LAND DEVELOPMENT  
AND TRANSPORTATION  
DATE 1/22/75

DESIGN CERTIFICATION  
"I certify that this plan for Erosion and Sediment Control represents a practical and workable plan based on my personal knowledge of the site conditions and that it was prepared in accordance with the requirements of the Howard Soil Conservation District."  
*Howard* 10-23-74  
Date

DEVELOPER'S CERTIFICATION  
"I certify that all development and/or construction will be done according to this plan of development and plan for Erosion and Sediment Control and I also authorize periodic on-site inspection by the Howard County Soil Conservation District or their authorized agents, as are deemed necessary." Deviation from this plan will not be made unless authorized by the Howard Soil Conservation District.  
Date

- GRADING NOTES
- Existing topography is based on field surveys conducted during 1974 by Associated Engineers, Inc. Bench Mark used was monument at south property corner, on Rte. 97, elevation 600.00.
  - Pitch gutter to conform to runoff flow.
  - The level of the play fields may be adjusted in order to balance all suitable fill material on site. However, cross slopes of fields must be maintained as shown on plan and Architect's approval must be obtained prior to adjusting levels of fields. (See Specs.) No storm drainage shall be installed until cut and fill has been completed and compacted.
  - A prefix of 5 or 6 may have to be added to contours and spot grades.

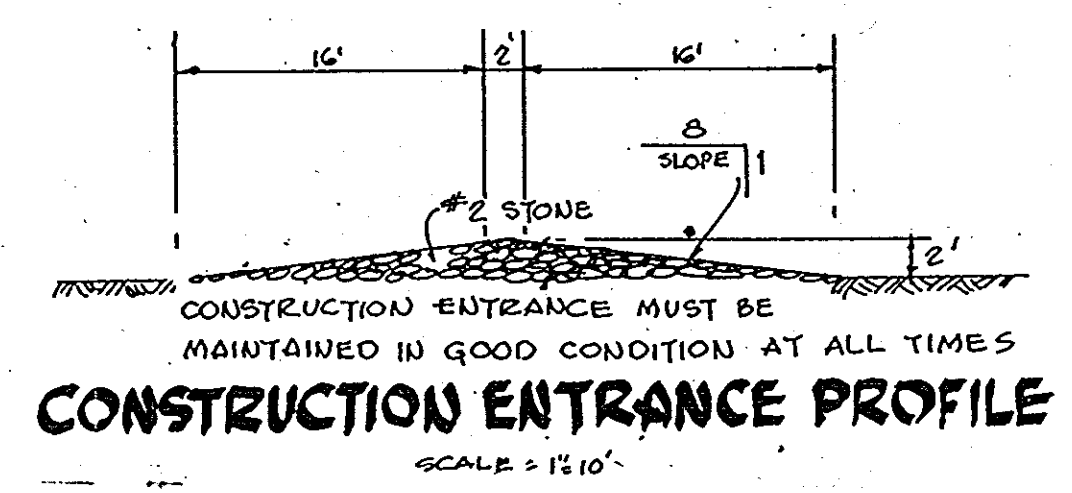
SEDIMENT TRAP SCHEDULE

No.	Acre Trib Area	Cu. Yds. Capacity	Dimensions Ft. Length Width Depth	Comments
1	2.50	174.20	56 10 3	
2	0.62	41.54	20 20 3	
I-1	0.95	63.65	30 30 2	
I-2	0.90	60.30	55 25 1.20	See note #2 & #3.
I-3	0.90	60.30	84 25 1.50	See note #2 & #3.
I-4	0.68	45.56	46 44 0.60	See note #2 & #3.
I-5	0.28	18.76	16 16 2	
I-6	0.21	14.07	12 12 3	
I-7	0.54	36.18	17 17 3	
I-8	0.18	12.06	13 13 2	
I-9	0.19	12.73	19 19 1	
I-10	0.19	27.46	16 16 3	
I-11	0.86	57.62	30 30 2	
I-12	0.41	27.46	16 16 3	
I-13	0.30	20.10	14 14 3	
I-14	0.48	32.16	17 17 3	
I-15	0.45	30.15	21 21 2	
* 6 *	1.52	104.94	53 53 1	
I-17	0.21	14.07	12 12 3	
I-18	1.45	97.15	35 35 2.25	See notes #2-#5
Y.D.	0.37	24.79	26 26 1	

- Notes:
- Capacity of Traps based on 67 cu. yds./acre of disturbed tributary area.
  - Temporarily replace inlet grate by a section of CHP riser pipe with 1/2" holes spaced 4" both ways, welded on a 1/2" steel plate securely fastened to inlet frame. Top elevations of risers shall be at least equal to the minimum surrounding ground elevations of trap (See plan).
  - Clean-out elevation shall be 6" below top of riser and this section shall be painted white or yellow.
  - Curb inlet shall have inlet throat temporarily shut and CHP riser located in place of manhole cover.
  - Maintain 1' min. cover on S.D. pipes in all cases.
- \* SEE TYPICAL DETAIL ON DRAW G-6.

SITE ANALYSIS

A. - Total Area of Site	14.88 Ac.
B. - Area of Roofs and Paving	3.25 Ac.
C. - Area to be Sodded & Seeded	11.04 Ac.
D. - Undisturbed Area	0.59 Ac.



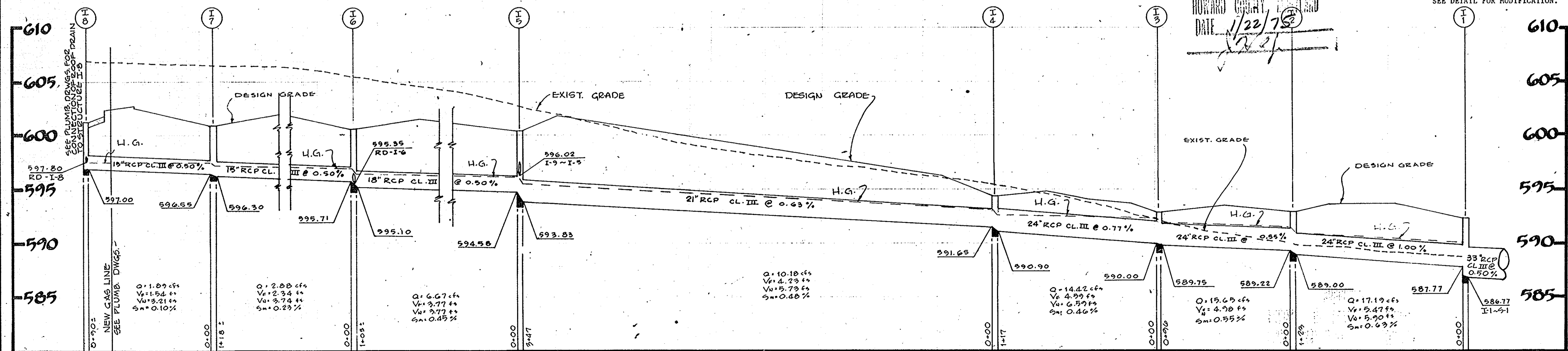
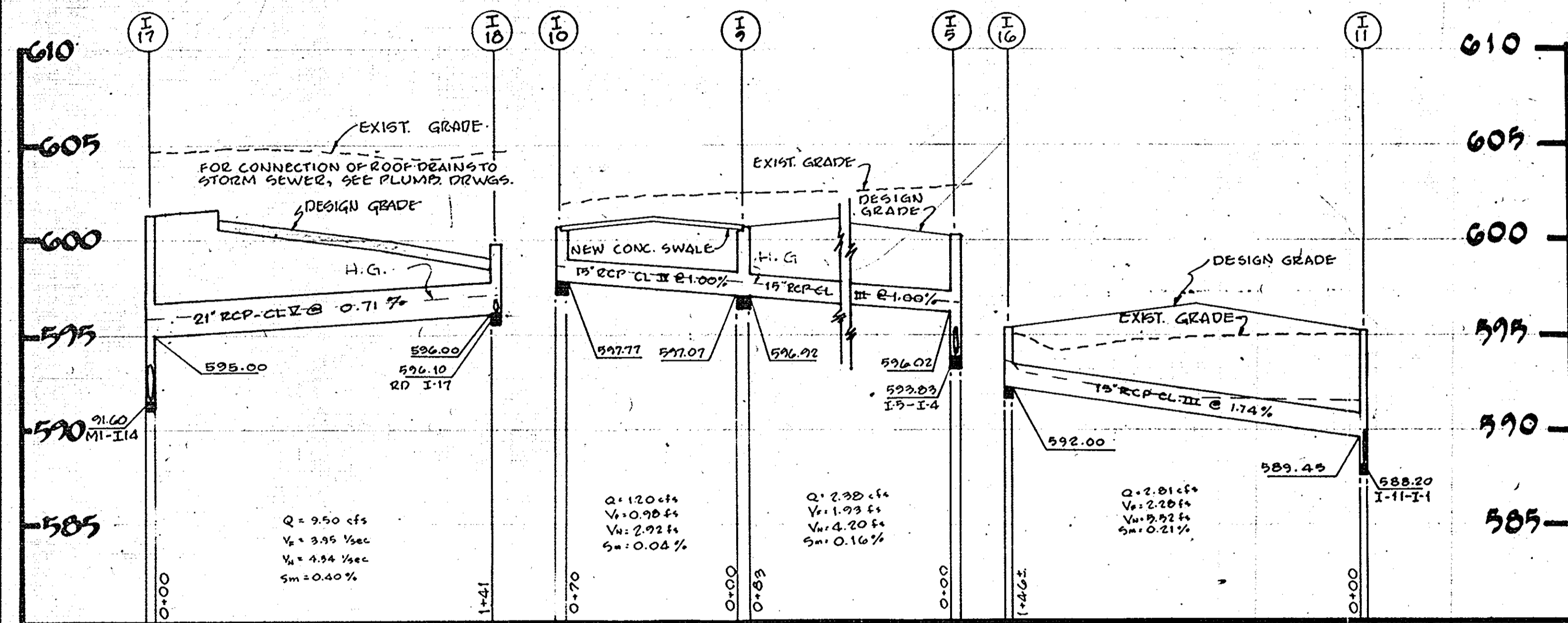
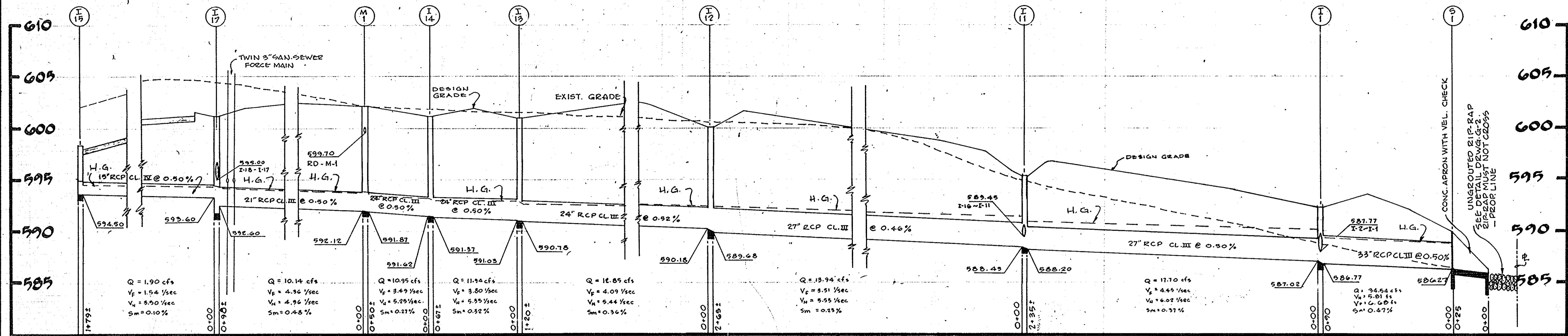
SCALE - 1" = 40'

APPENDUM NO. 3  
2ND ELECTION DISTRICT  
OWNER: BOARD OF EDUCATION, RTE. #32, CLARKSVILLE, MD.

GRADING PLAN & SEDIMENT CONTROL  
BUSHY PARK ELEMENTARY SCHOOL  
HOWARD COUNTY



NOTE: NO STORM DRAINAGE WILL BE INSTALLED UNTIL CUT AND FILL IS BALANCED



STORM SEWER PROFILES

SCALE: 1" = 40' HORIZ. SCALE  
1" = 5' VERT. SCALE

Reviewed for Howard, S.C.D. and State Technical Requirements

Signature: *James M. Nelson* Date: 2-10-75  
S. Soil Conservation Service  
THIS DEVELOPMENT PLAN IS APPROVED FOR SOIL AND SEDIMENT CONTROL BY THE HOWARD SOIL CONSERVATION DISTRICT  
Approved: *Robert J. Johnson* Date: 2-10-75  
Howard S.C.D.

APPROVED FOR PRIVATE WATER AND PRIVATE SEWERAGE SYSTEMS, HOWARD COUNTY HEALTH DEPARTMENT  
Signature: *Robert M. D...* Date: 2/28/75  
COUNTY HEALTH OFFICER  
APPROVED, HOWARD COUNTY OFFICE OF PLANNING AND ZONING  
Signature: *James G. Hamilton* Date: 3-3-75  
PLANNING DIRECTOR  
APPROVED FOR PRIVATE WATER, PRIVATE SEWER AND STORM DRAINAGE SYSTEMS AND ROADS, HOWARD COUNTY DEPARTMENT OF PUBLIC WORKS  
Signature: *W. O. L...* Date: 2-20-75  
DIRECTOR  
Signature: *R. H. W...* Date: 2/18/75  
CHIEF BUREAU OF HIGHWAYS

STRUCTURE TABLE				
NO.	TYPE	TOP ELEV.	INV. OUT.	REMARKS
S-1	HEADWALL W/APRON	-	86.27	SEE NOTE BELOW *
I-1	6" INLET	992.20	586.77	HOWARD CITY DETAIL SDD-43
I-2	"	992.75	589.00	"
I-3	"	992.75	589.75	"
I-4	"	994.20	590.90	"
I-5	YARD DRAIN	600.20	593.83	AS DETAILED DRWG. G-2
I-6	"	600.40	595.10	"
I-7	"	600.80	596.30	"
I-8	"	601.18	597.00	"
I-9	"	600.64	596.92	"
I-10	"	600.64	597.77	"
I-11	6" INLET	595.20	588.20	HOWARD CITY DETAIL SDD-43
I-12	6" INLET	600.00	589.68	"
I-13	YARD DRAIN	601.00	590.78	AS DETAILED DRWG. G-2
I-14	"	601.30	591.37	"
I-15	4" INLET	598.98	594.50	HOWARD CITY DETAIL SDD-27
I-16	6" INLET	995.20	592.00	HOWARD CITY DETAIL SDD-43
I-17	YARD DRAIN	601.30	592.60	AS DETAILED DRWG. G-2
I-18	A-1 INLET	599.82	596.00	HOWARD CITY DETAIL SDD-27
M-1	A-1 MANHOLE	602.00	591.87	HOWARD CITY DETAIL SDD-7

\* USE STD. 30" DIA. TYPE C HEADWALL FOR 36" PIPE MD-354.01 WITH MODIFIED ENERGY DISSIPATING GUTTER MD-389.11. SEE DETAIL FOR MODIFICATION.

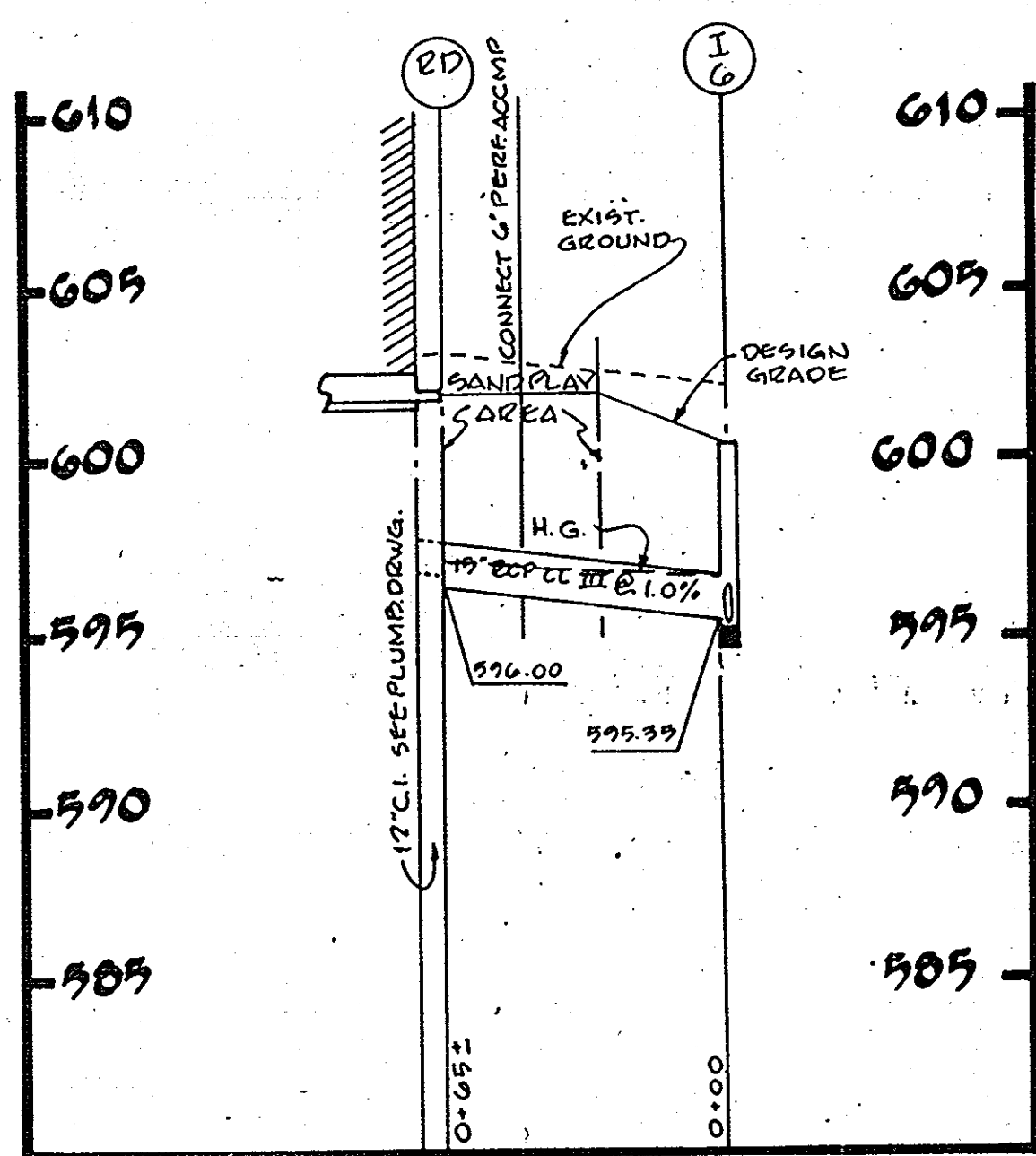
APPROVED  
DIVISION OF LAND DEVELOPMENT AND TRANSPORTATION PLANNING  
HOWARD COUNTY, MARYLAND  
DATE: 1/22/75  
*[Signature]*

REV. DATE 12/12/74 TO MEET COUNTY COMMENTS

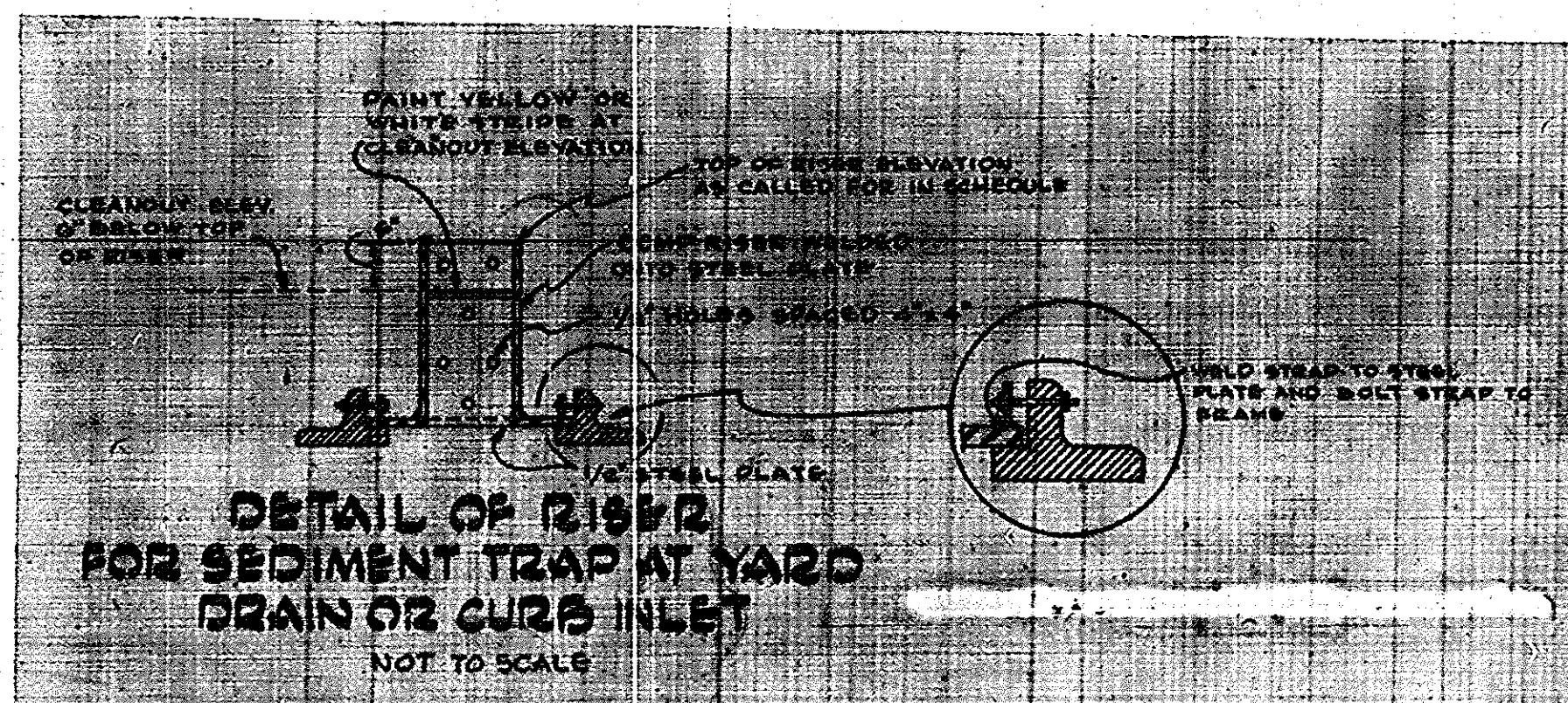
2ND ELECTION DISTRICT  
OWNER: BOARD OF EDUCATION, RTE. #32, CLARKSVILLE, MD.

STORM DRAIN PROFILES

BUSHY PARK ELEMENTARY SCHOOL  
HOWARD COUNTY, MARYLAND



**STORM DRAIN PROFILE**  
SCALE: HOR. 1"=40'  
VERT. 1"=5'



**DETAIL OF RISER FOR SEDIMENT TRAP AT YARD DRAIN OR CURB INLET**  
NOT TO SCALE

APPROVED FOR PRIVATE WATER AND PRIVATE SEWERAGE SYSTEMS, HOWARD COUNTY HEALTH DEPARTMENT

*[Signature]* 1/28/75  
COUNTY HEALTH OFFICER DATE

APPROVED, HOWARD COUNTY OFFICE OF PLANNING AND ZONING

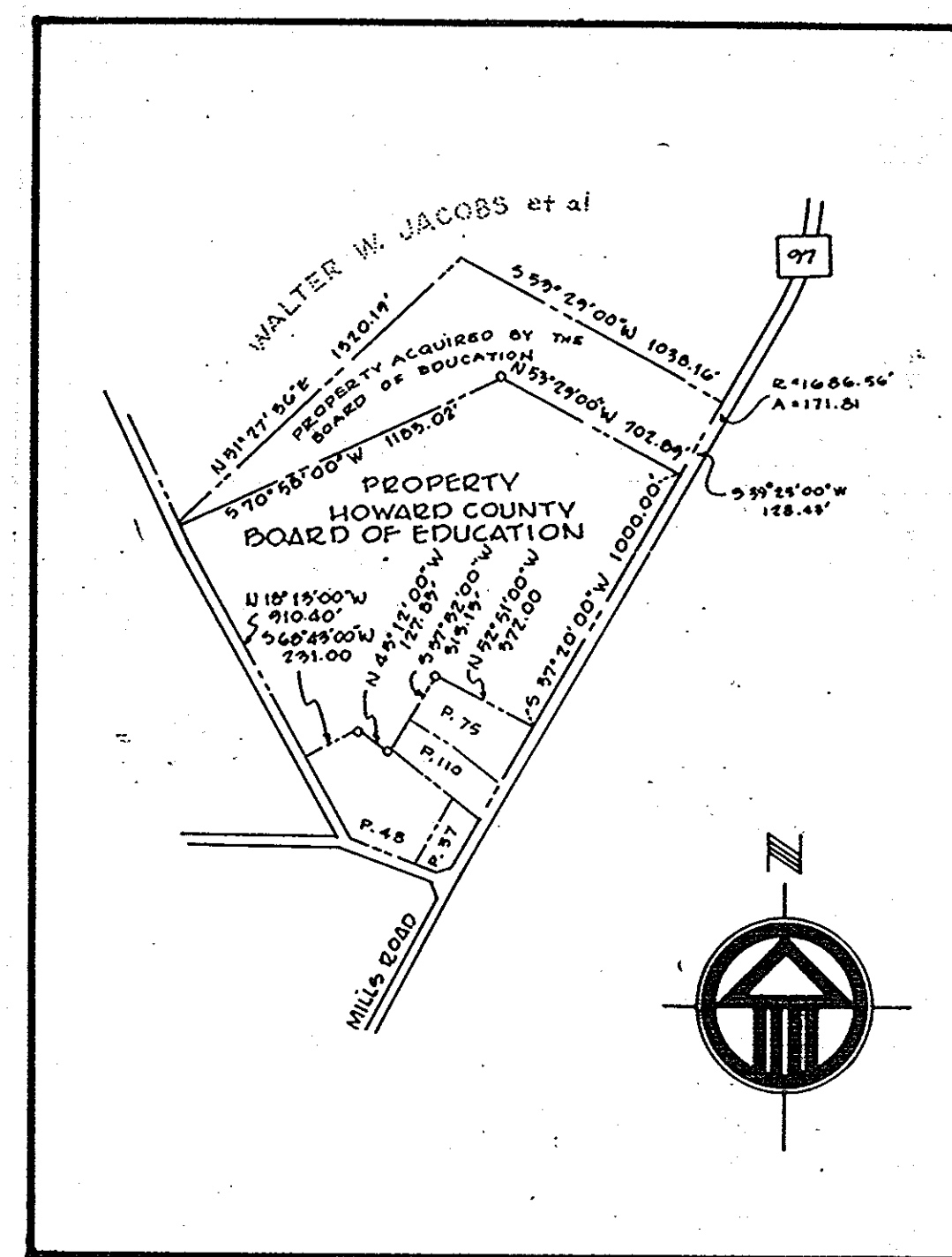
*[Signature]* 3-3-75  
PLANNING DIRECTOR DATE

*[Signature]* 3/3/75  
CHIEF DIVISION OF LAND DEVELOPMENT DATE  
TRANSPORTATION PLANNING

APPROVED FOR PRIVATE WATER, PRIVATE SEWER AND STORM DRAINAGE SYSTEMS AND ROADS HOWARD COUNTY DEPARTMENT OF PUBLIC WORKS

*[Signature]* 7-20-75  
DIRECTOR DATE

*[Signature]* 2/18/75  
CHIEF, BUREAU OF HIGHWAYS DATE



**OVERALL PROPERTY MAP**  
SCALE: 1"=600'

Reviewed for *[Signature]* S.C.D.

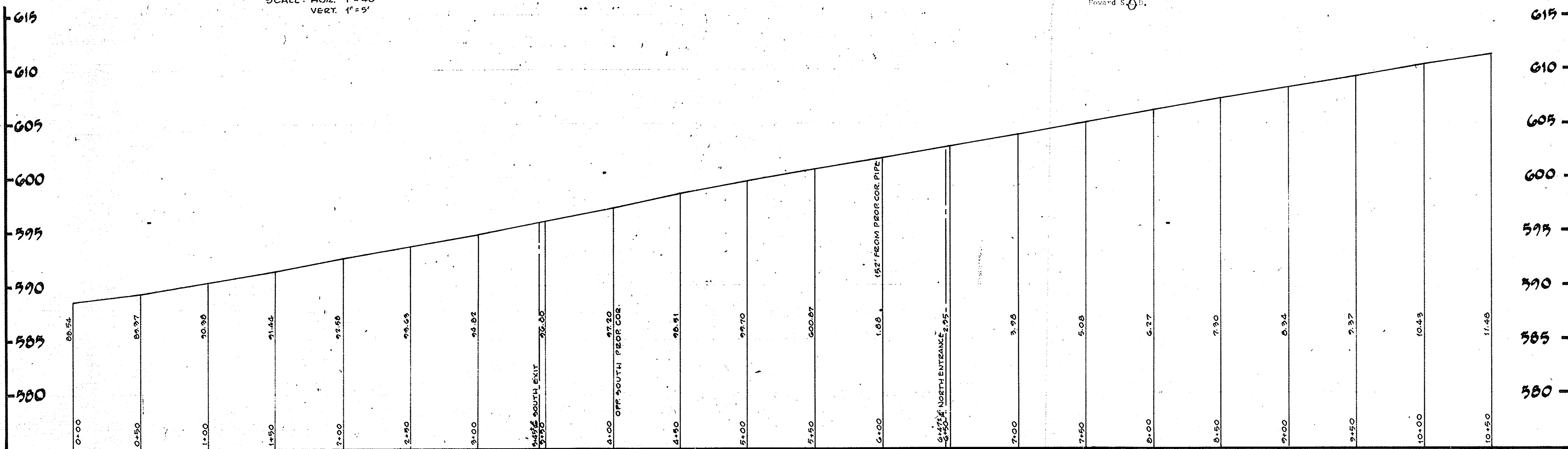
and Meets Technical Requirements

*[Signature]* Date 2-10-75

U. S. Soil Conservation Service

THIS DEVELOPMENT PLAN IS APPROVED FOR SOIL AND SEDIMENT CONTROL BY THE U.S. SOIL CONSERVATION DISTRICT

Approved *[Signature]* Date 2-10-75



**ROAD & PROFILE - RT. #97**

SCALE: HOR. 1"=40'  
VERT. 1"=5'

APPROVED  
DIVISION OF LAND DEVELOPMENT  
AND TRANSPORTATION PLANNING  
HOWARD COUNTY, MARYLAND  
DATE 1/22/75

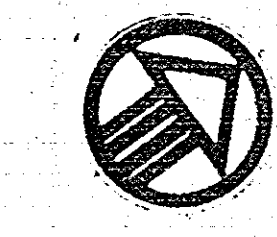
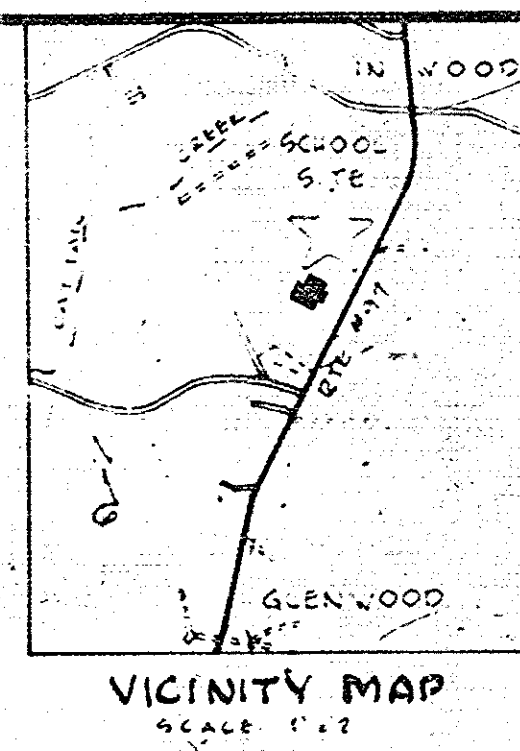
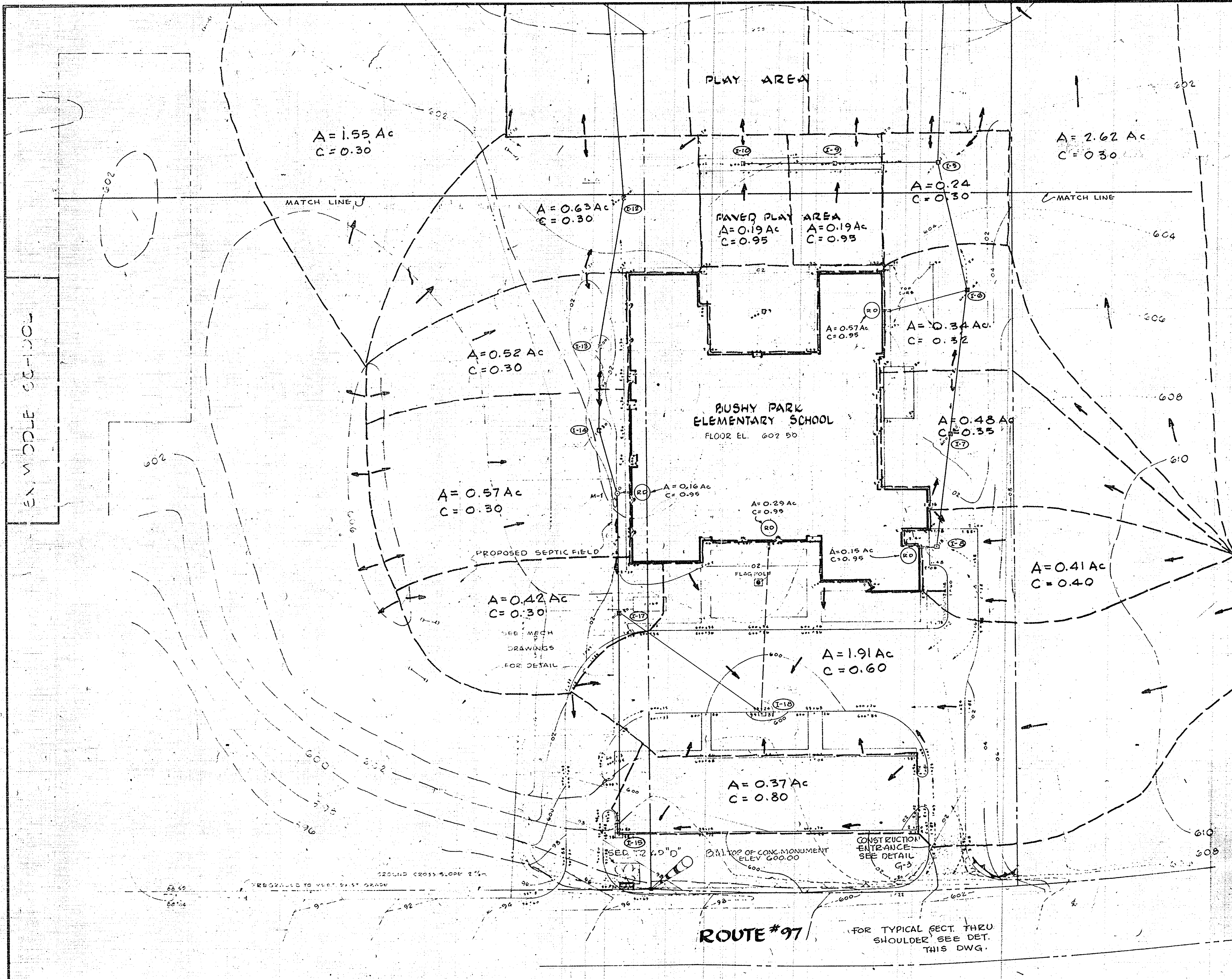
**MCLEOD FERRARA, ENSIGN**  
CHARTERED ARCHITECTS  
3434 WISCONSIN AVENUE SUITE 2008  
MARYLAND 20715  
301/682-2778

**MIFE**  
MECHANICAL & ELECTRICAL ENGINEERS  
STRUCTURAL ENGINEERS  
SITE ENGINEERS

PROFILES

**BUSHY PARK ELEMENTARY SCHOOL**  
HOWARD COUNTY, MARYLAND

CORR. NO.  
DRAWN BY  
CHECKED BY  
DATE 12-12-74  
SHEET NO.  
**G-6**  
OF 6 SHEETS



APPROVED FOR PRIVATE WATER AND PRIVATE SEWERAGE SYSTEMS, HOWARD COUNTY HEALTH DEPARTMENT

*[Signature]* 2/28/75  
COUNTY HEALTH OFFICER DATE

APPROVED, HOWARD COUNTY OFFICE OF PLANNING AND ZONING

*[Signature]* 3-3-75  
PLANNING DIRECTOR DATE

*[Signature]* 3/3/75  
CHIEF DIVISION OF LAND DEVELOPMENT DATE  
TRANSPORTATION PLANNING

APPROVED FOR PRIVATE WATER PRIVATE SEWER AND STORM DRAINAGE SYSTEMS AND ROADS HOWARD COUNTY DEPARTMENT OF PUBLIC WORKS

*[Signature]* 2-22-75  
DIRECTOR DATE  
*[Signature]* 2/18/75  
CHIEF BUREAU OF HIGHWAYS DATE

Reviewed for *[Signature]*

*[Signature]* 2-10-75

U. S. Soil Conservation Service

THIS DEVELOPMENT PLAN IS APPROVED FOR SOIL AND SEDIMENT CONTROL BY THE HOWARD SOIL CONSERVATION DISTRICT

Approved *[Signature]* Date 2-10-75  
Howard Co., Md.

**LEGEND**

- 594 --- EXISTING CONTOURS
- 94 --- DESIGN CONTOURS
- 75.14 --- EXISTING SPOT GRADES
- 99.20 --- DESIGN SPOT GRADES
- --- EXISTING STORM DRAIN PIPE & STRUCTURES
- --- NEW STORM DRAIN PIPE & STRUCTURES
- --- DRAINAGE DIVIDES
- A --- DRAINAGE AREA (ACRES)
- C --- RUNOFF COEFFICIENT
- --- FLOW ARROWS

ROUTE #97 (FOR TYPICAL SECT THRU SHOULDER SEE DET. THIS DWG.)

SCALE - 1" = 40'

CONSTRUCTION ENTRANCE PROFILE  
SCALE - 1" = 10'

**MCLEOD, FERRARA, ENSIGN**  
REGISTERED PROFESSIONAL ENGINEERS  
CHARTERED ARCHITECTS  
301/652-2775

**IM/FE**  
GREENE & SEAQUIST  
BENESSAT & SPORIDIS CO-MECHANICAL & ELECTRICAL ENGINEERS  
ASSOCIATED ENGINEERS, INC. SITE ENGINEERS

**DRAINAGE DIVIDES**

**BUSHY PARK ELEMENTARY SCHOOL**  
HOWARD COUNTY, MARYLAND

COMM. No.  
DRAWN BY  
CHECKED BY  
DATE OCT 23, 1974  
SHEET No.

**DD-1**  
OF SHEETS

APPROVED FOR PRIVATE WATER AND PRIVATE SEWERAGE SYSTEMS BY HOWARD COUNTY HEALTH DEPARTMENT  
 COUNTY HEALTH OFFICER  
*[Signature]* 3/28/75  
 DATE

APPROVED, HOWARD COUNTY OFFICE OF PLANNING AND ZONING  
 PLANNING DIRECTOR  
*[Signature]* 3-3-75  
 DATE

APPROVED FOR PRIVATE WATER PRIVATE SEWERAGE STORM DRAINAGE SYSTEMS AND ROAD IMPROVEMENTS BY HOWARD COUNTY DEPARTMENT OF PUBLIC WORKS  
 DIRECTOR  
*[Signature]* 2-20-75  
 DATE

APPROVED FOR PRIVATE WATER PRIVATE SEWERAGE STORM DRAINAGE SYSTEMS AND ROAD IMPROVEMENTS BY HOWARD COUNTY DEPARTMENT OF PUBLIC WORKS  
 CHIEF BUREAU OF HIGHWAYS  
*[Signature]* 2-18-75  
 DATE

Approved for Howard SCD  
 and its Technical Requirements  
*[Signature]* Date 2-10-75  
 Date

THIS DEVELOPMENT IS SUBJECT TO SOIL EROSION AND SEDIMENT CONTROL BY THE HOWARD SOIL CONSERVATION DISTRICT  
 Approved *[Signature]* Date 2-10-75  
 Howard S.C.D.

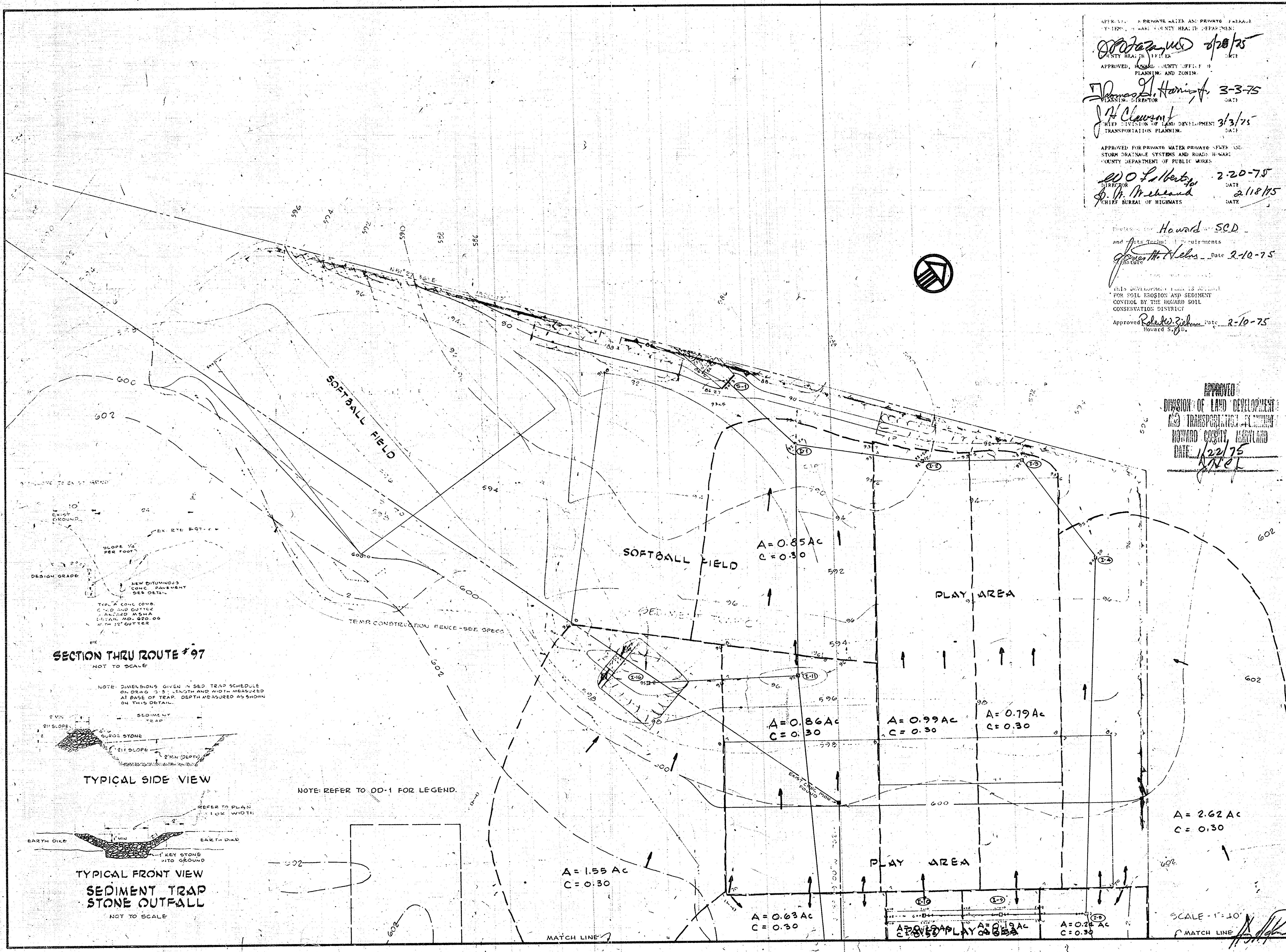
APPROVED  
 DIVISION OF LAND DEVELOPMENT  
 AND TRANSPORTATION PLANNING  
 HOWARD COUNTY, MARYLAND  
 DATE 1/22/75  
*[Signature]*

MCLEOD, FERRARA, ENSIGN  
 CHARTERED ARCHITECTS  
 GREENE & SEAGUIST  
 BENBASSAT & SPORIDIS  
 ASSOCIATED ENGINEERS INC.

DRAINAGE DIVIDES

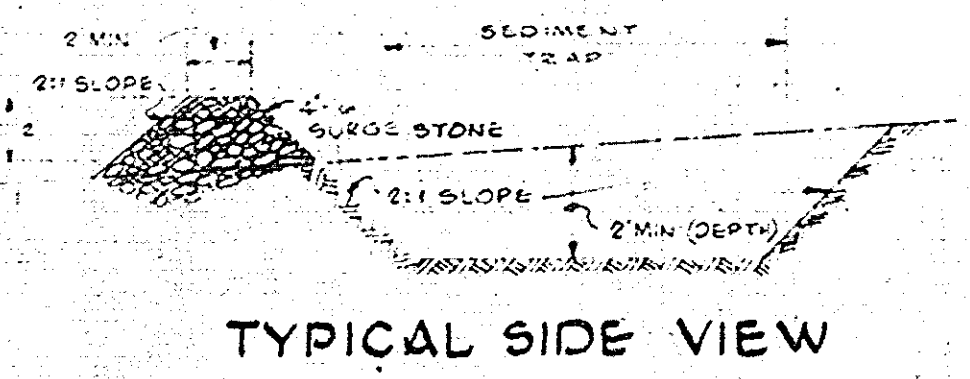
BUSHY PARK  
 ELEMENTARY SCHOOL  
 HOWARD COUNTY, MARYLAND

COMM. NO.  
 DRAWN BY  
 CHECKED BY  
 DATE  
 SHEET NO.  
 DD-2  
 OF SHEETS

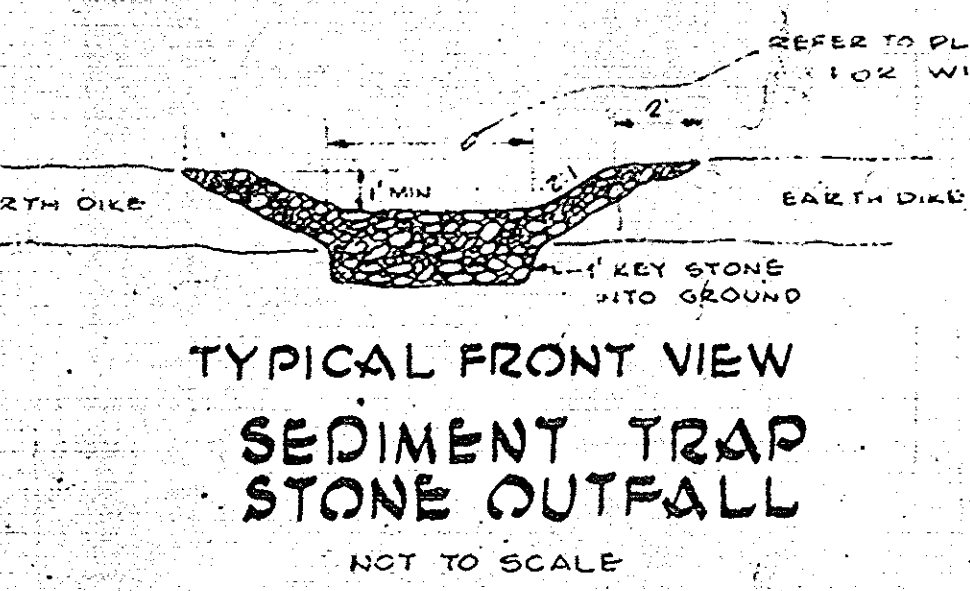


SECTION THRU ROUTE #97  
 NOT TO SCALE

NOTE: DIMENSIONS GIVEN IN SED TRAP SCHEDULE ON DRAW 3-3-1 LENGTH AND WIDTH MEASURED AT BASE OF TRAP. DEPTH MEASURED AS SHOWN ON THIS DETAIL.



NOTE: REFER TO DD-1 FOR LEGEND.



SCALE - 1" = 10'  
 MATCH LINE