

GENERAL NOTES

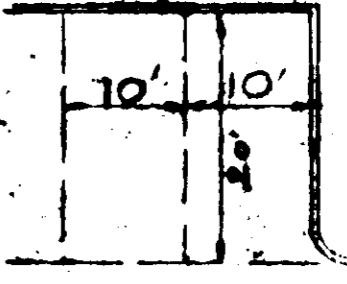
- 1 Area of site equals 7.974 Ac
- 2 Existing zoning of site: N.T. Employment/Commercial
- 3 Existing use of site: Vacant Land
- 4 Site shall be supplied by public water & public sanitary sewer
- 5 Landscaping will be provided within the parking lot & along the perimeter of the site
- 6 All drives within the site are private
- 7 Allowable building coverage equals 30%
- 8 Proposed building coverage equals 7.2%
- 9 Road off-street parking (2,000 sq. ft. bays) 192
- 10 Proposed off-street parking 225
- 11 All traffic control services, parking & signing to be done in accordance with the Manual of Uniform Traffic Control Devices, 1971 Edition
- 12 Site Plan revised for new traffic and landscape layout.

Band C-3
 Band C-2
 G-5

Task Coat in accordance with C-31.4
 Prime Coat in accordance with C-30.3
 Bit. Concrete Base Course #
 Howard Research & Development Corp (465-196)

PARKING & DRIVES PAVING DETAIL

* All materials & construction shall be in accordance with Howard Co Road Construction Code & Standard Specifications.



TYPICAL PARKING SPACE
 No Scale

Construct Sidewalk as shown as part of total site development. Sidewalk to be 45' per Howard Co. 914. DWG. D-14.

APPROVED: FOR PUBLIC WATER & PUBLIC SEWERAGE SYSTEMS, HOWARD COUNTY HEALTH DEPARTMENT.	DATE: 11/19/74
APPROVED: HOWARD COUNTY OFFICE OF PLANNING & ZONING.	DATE: 12/16/74
APPROVED: FOR PUBLIC WATER, PUBLIC SEWERAGE AND STORM DRAINAGE SYSTEMS & ROAD.	DATE: 12/12/74

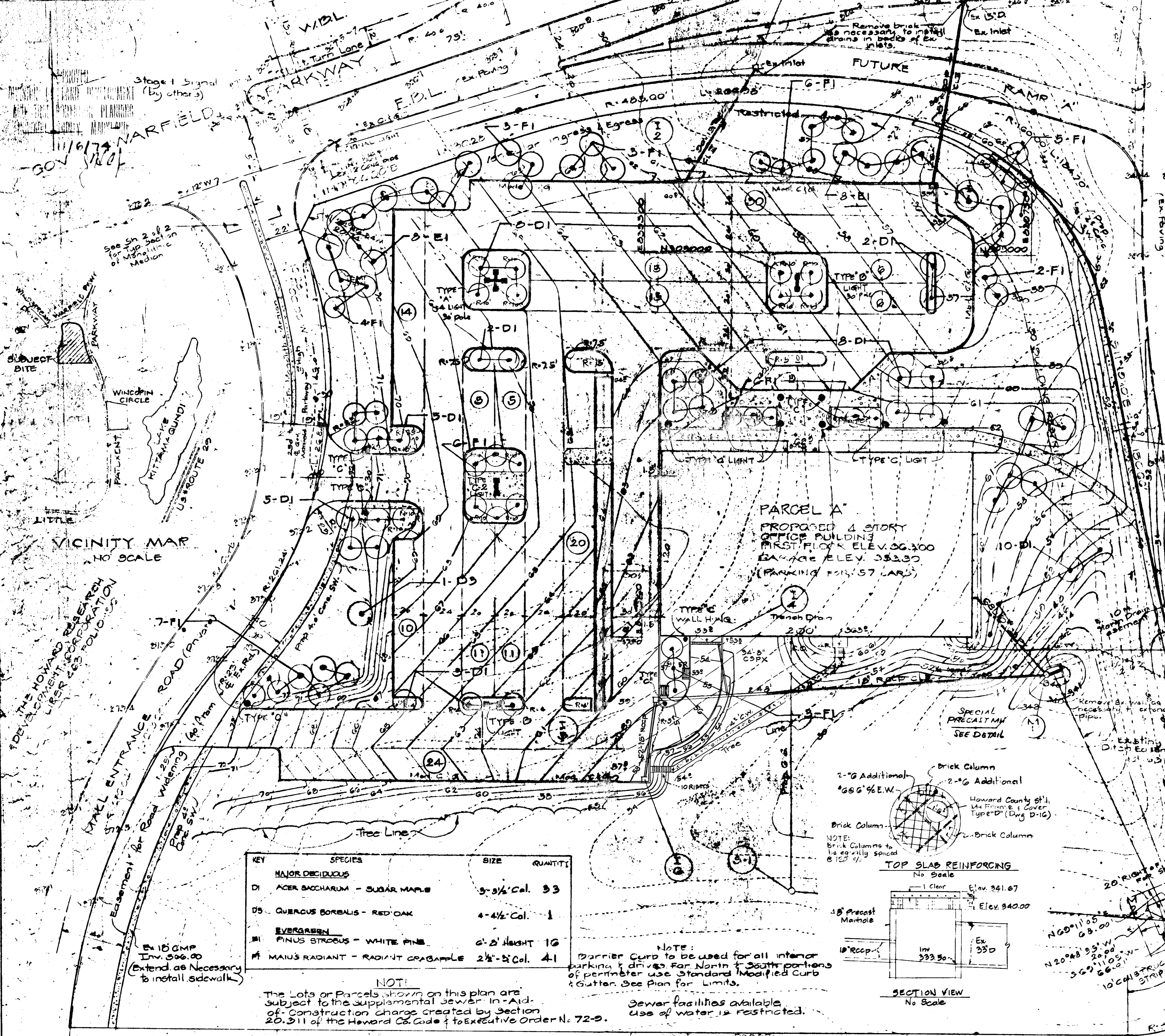
NOTE: THE LOTS OR PARCELS SHOWN ON THIS PLAN ARE SUBJECT TO THE SUPPLEMENTAL SEWER IN-AID-OF-CONSTRUCTION CHARGE CREATED BY SECTION 20.311 OF THE HOWARD CO. CODE AND TO EXECUTIVE ORDER NO. 72-9.

REVISED PARKING PLAN SITE PLAN

TOWN CENTER - SECT. 2, AREA 3
 MALL NORTH OFFICE BUILDING
 TAXMAP NO. 30 - P.O.P. PHASE 121

Election Dist. N-5
 Scale: 1"=30'
 Recorded as Town Center Parcel 'A' in P.B. 23, F 14, 5-25-72
 Sl. 1 of 2
 REV. 10-15-74 MH:1 detail added
 REV. 11-12-74 Sewer Note added

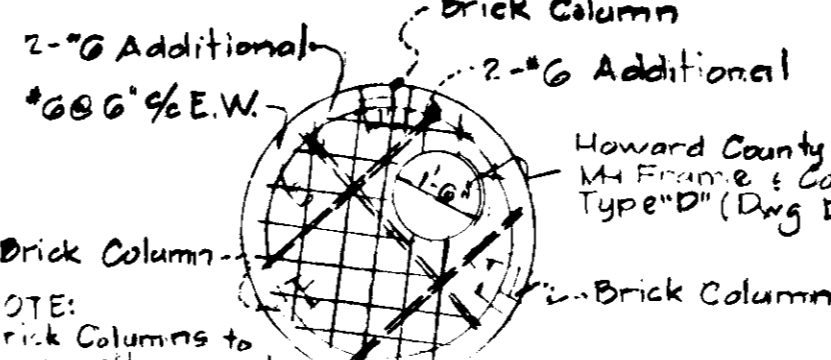
Paul Lee
 Registered P.E. #4047



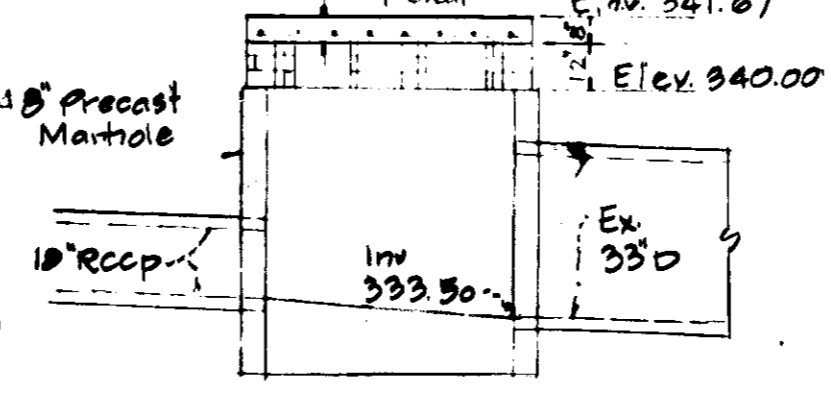
KEY	SPECIES	SIZE	QUANTITY
MAJOR DECIDUOUS			
D1	ACER SACCHARUM - SUGAR MAPLE	3'-3 1/2' Cal.	33
D5	QUERCUS BOREALIS - RED OAK	4'-4 1/2' Cal.	1
EVERGREEN			
E1	FINUS STROBUS - WHITE PINE	6'-2' Height	16
E2	MAIUS RADIANT - RADIANT CRABAPPLE	2 1/2'-3' Cal.	41

NOTE:
 The Lots or Parcels shown on this plan are subject to the supplemental sewer In-Aid-of-Construction charge created by Section 20.311 of the Howard Co. Code & to Executive Order No. 72-9.

NOTE:
 Barrier Curb to be used for all interior parking & drives. For North & South portions of perimeter use Standard Modified Curb & Gutter. See Plan for Limits.
 Sewer facilities available. Use of water is restricted.



TOP SLAB REINFORCING
 No Scale



SECTION VIEW
 No Scale

VICINITY MAP
 NO SCALE

DEVELOPMENT CORRELATION LINES FOLLOWING

STERRETT PLACE

DEVELOPERS:
 DELLA RATTI, INC.
 1299 LAMBERTON DRIVE
 SILVER SPRING, MD 20910

MCA
 MCA ENGINEERING CORPORATION
 CONSULTING ENGINEERS

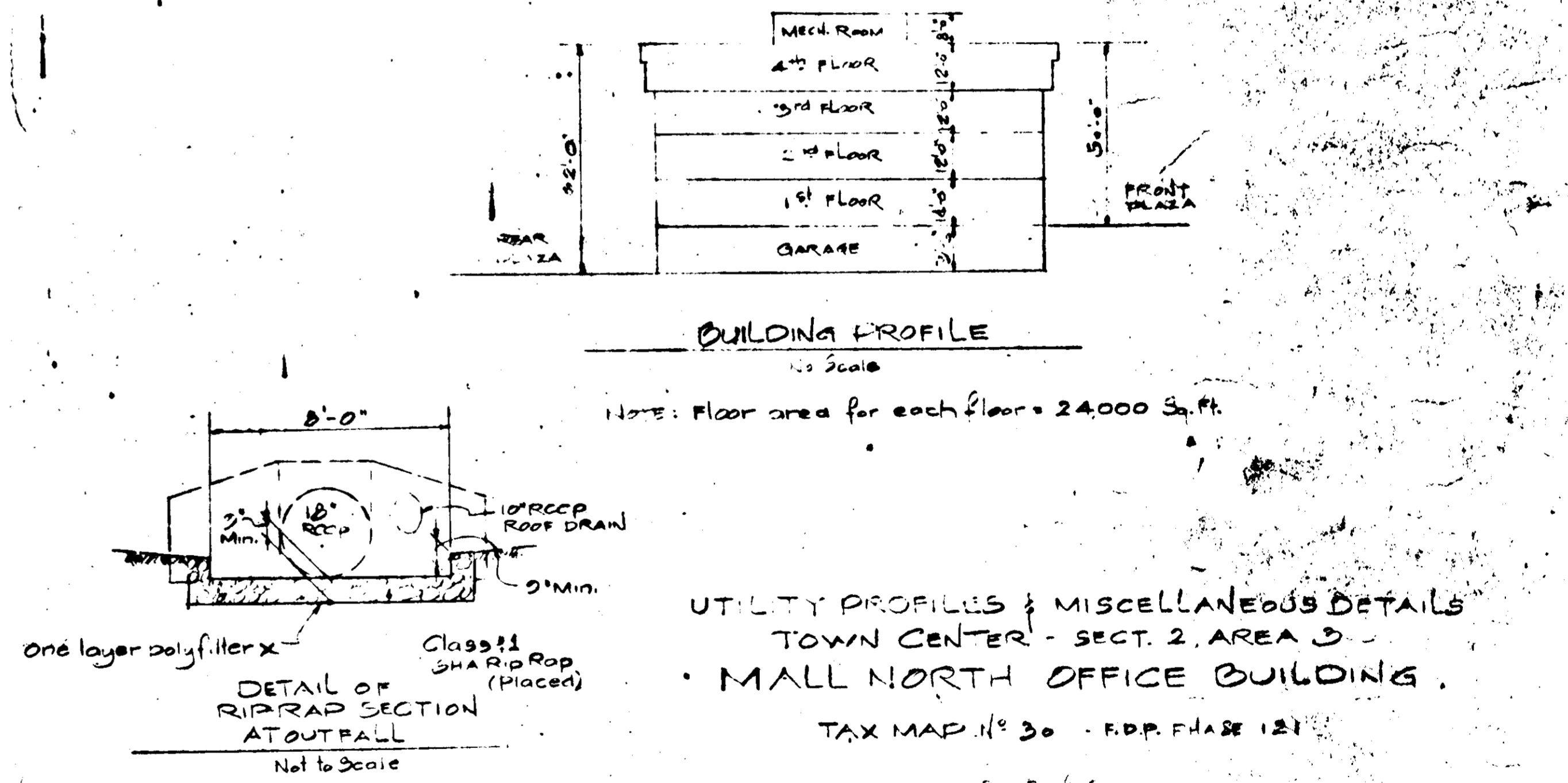
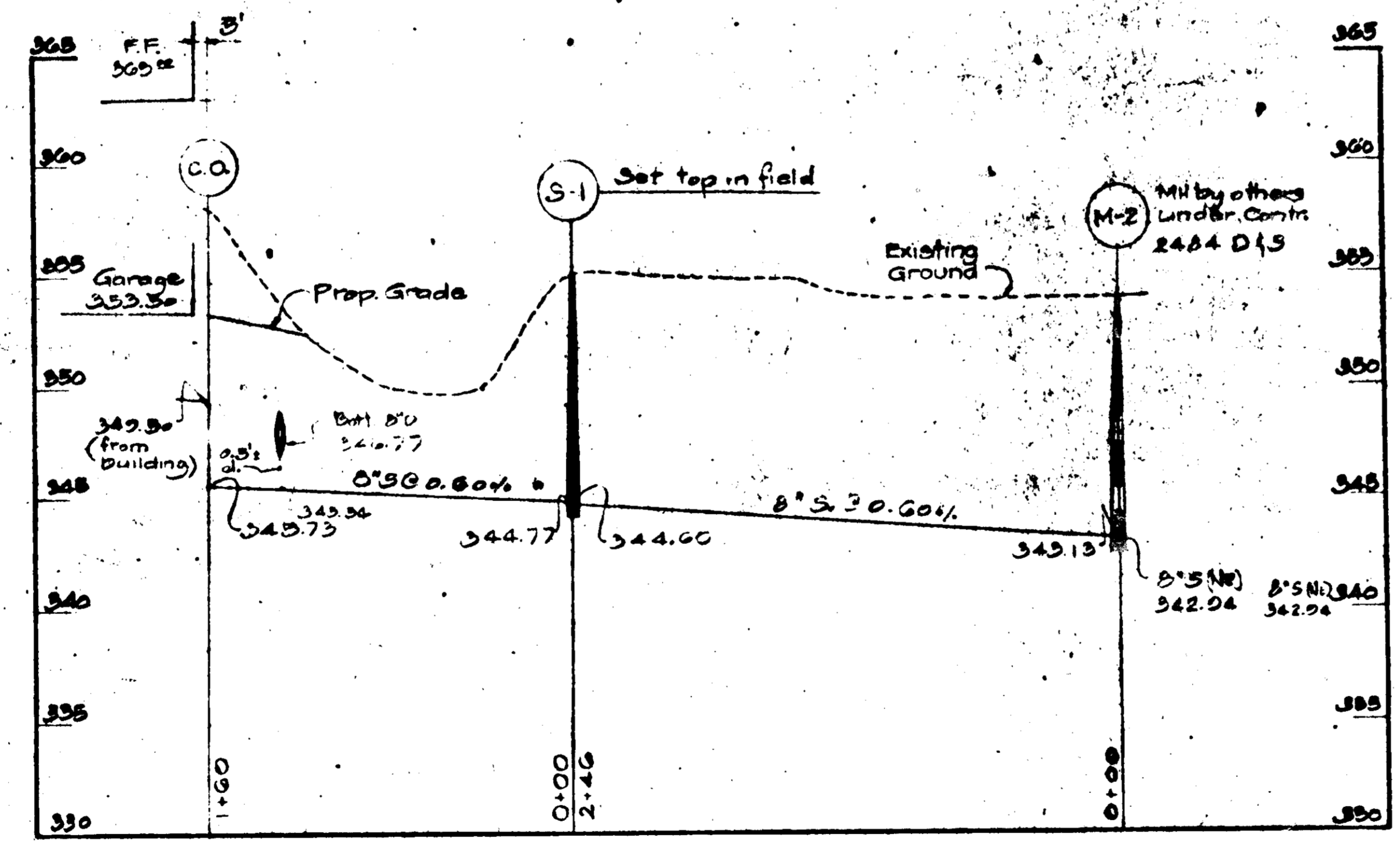
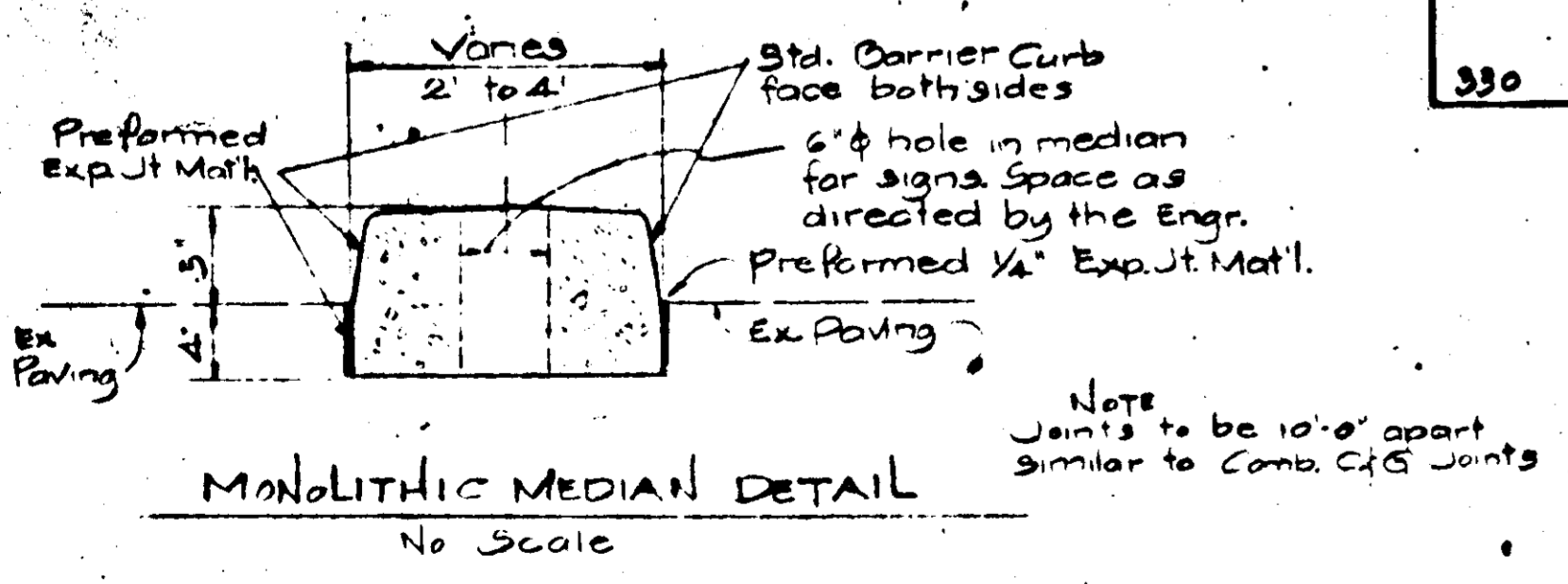
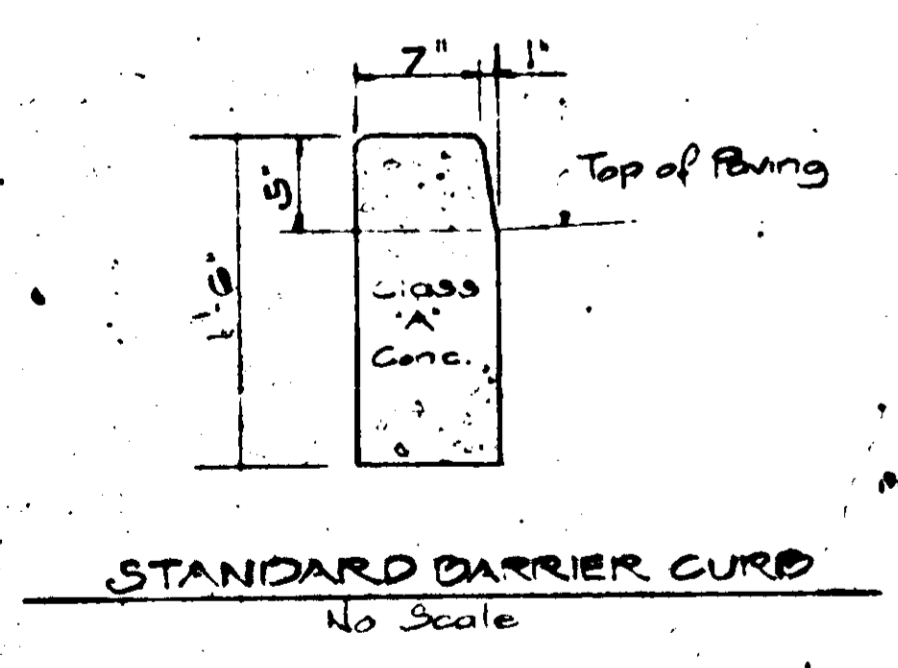
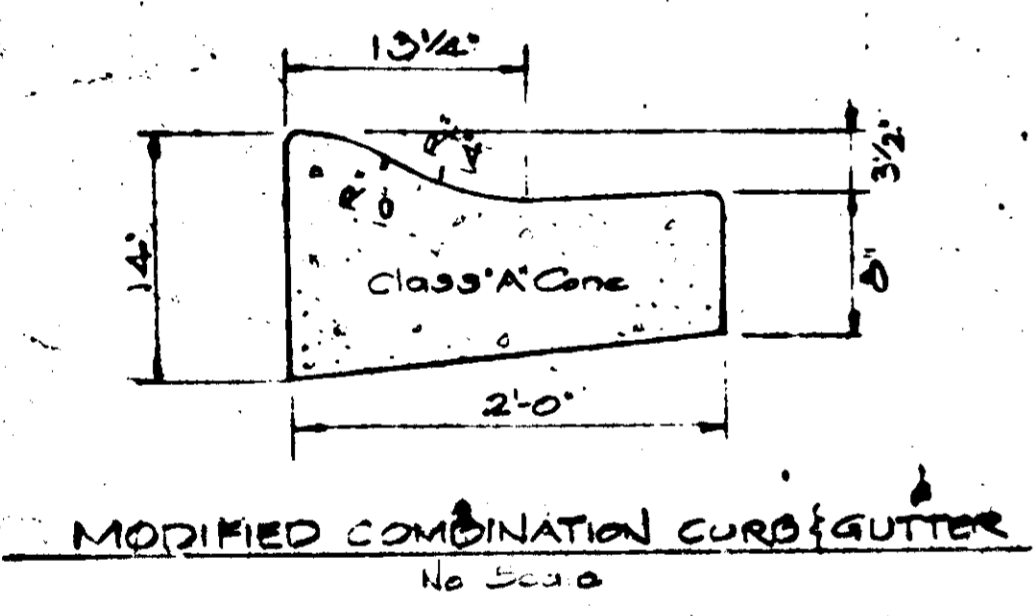
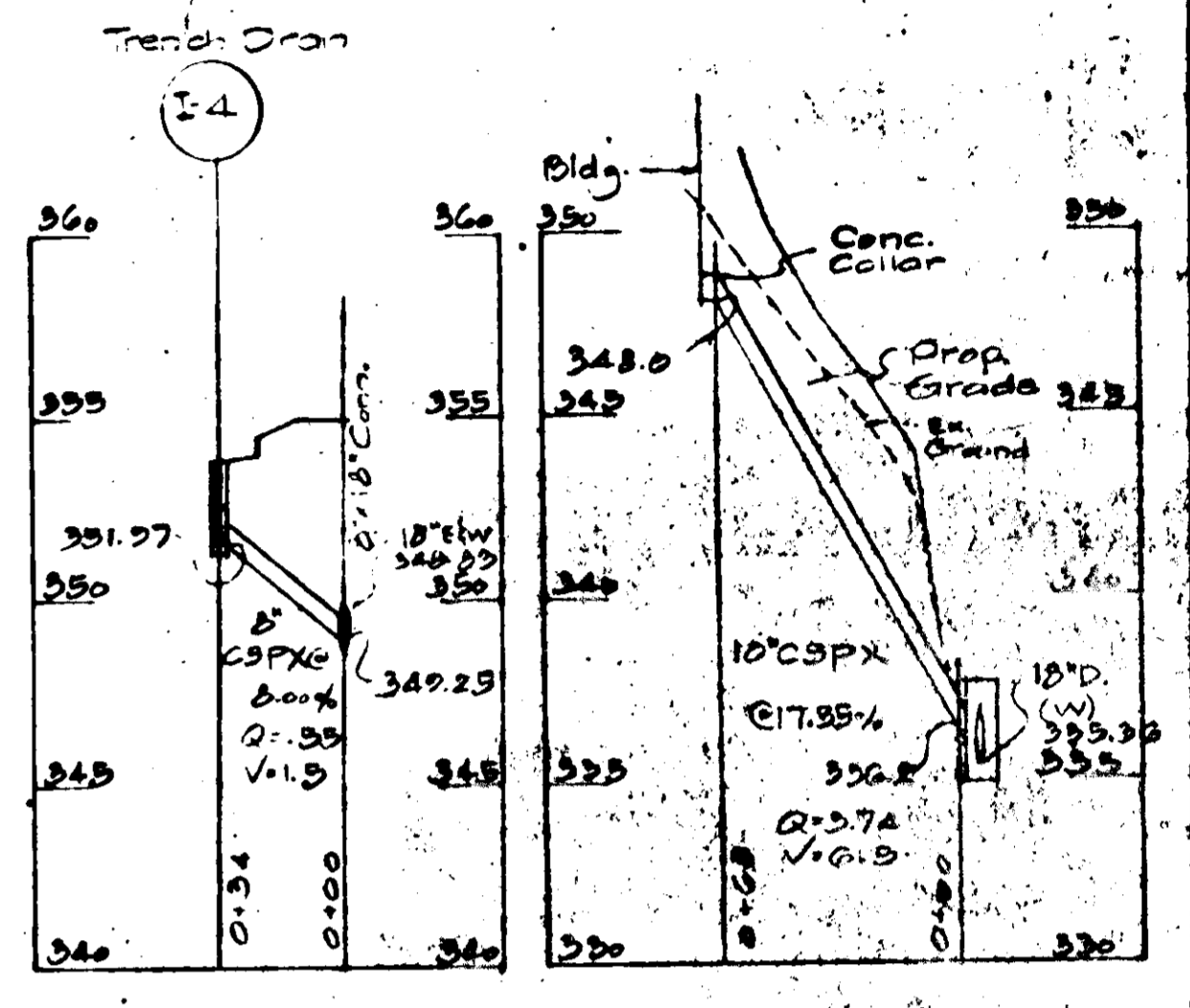
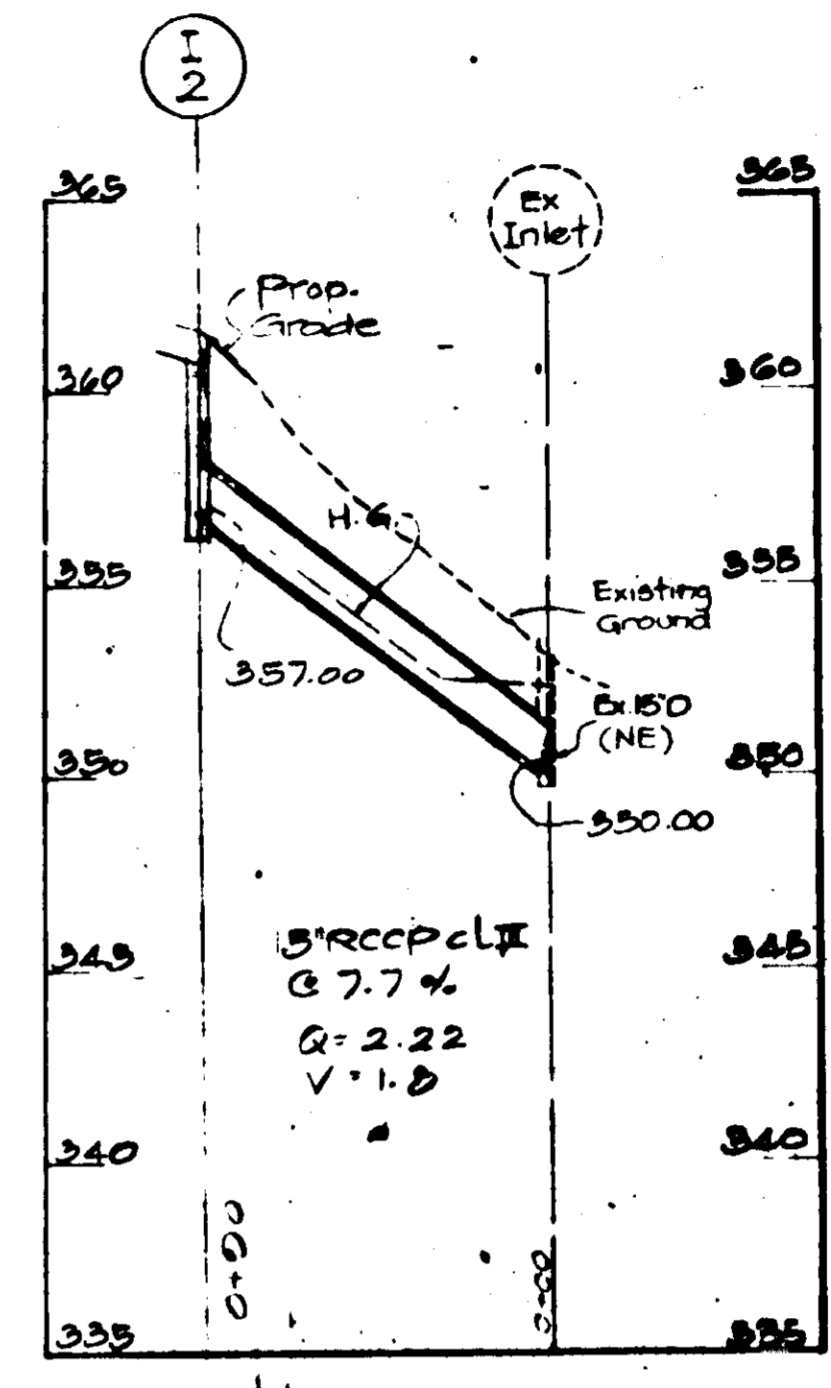
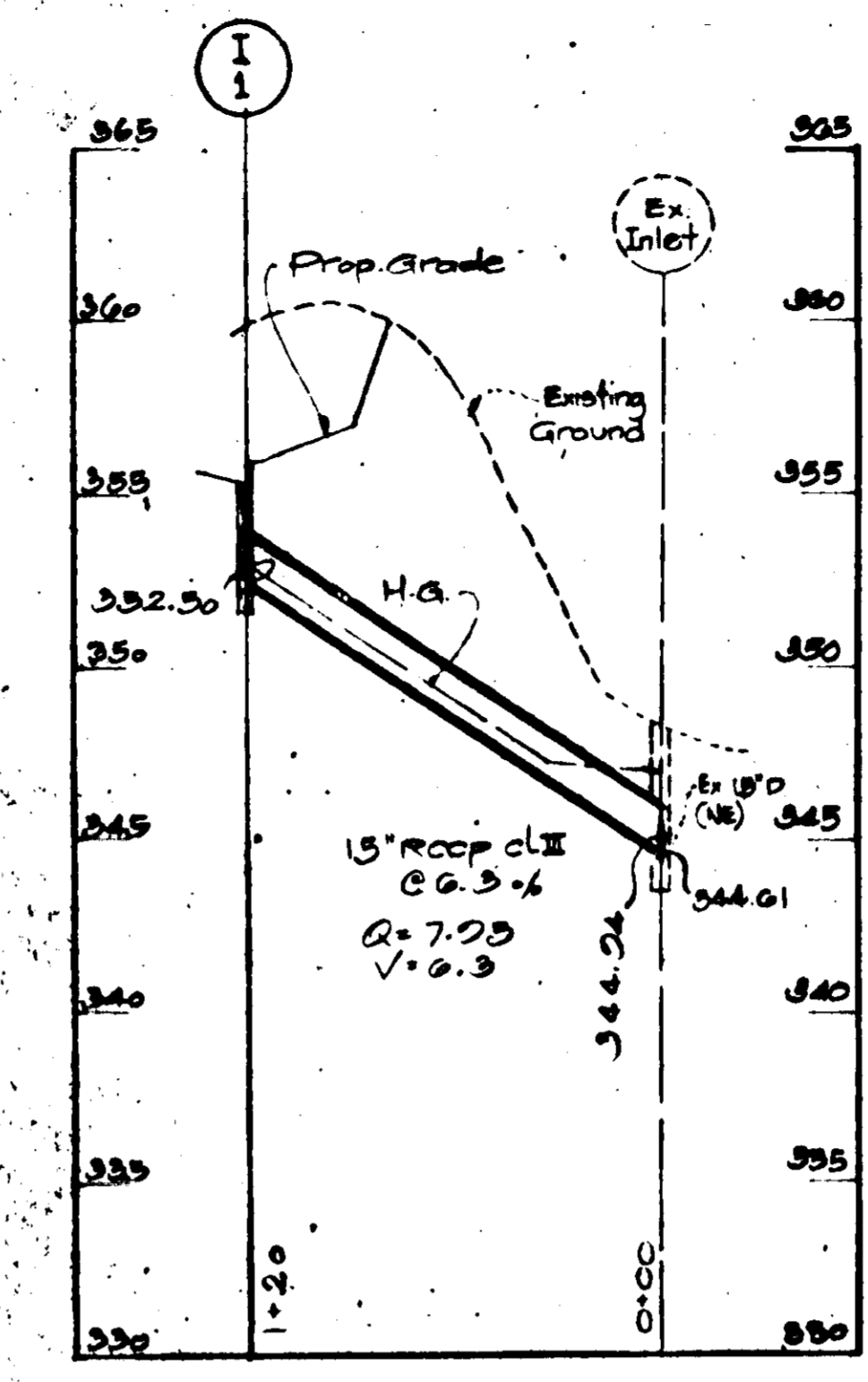
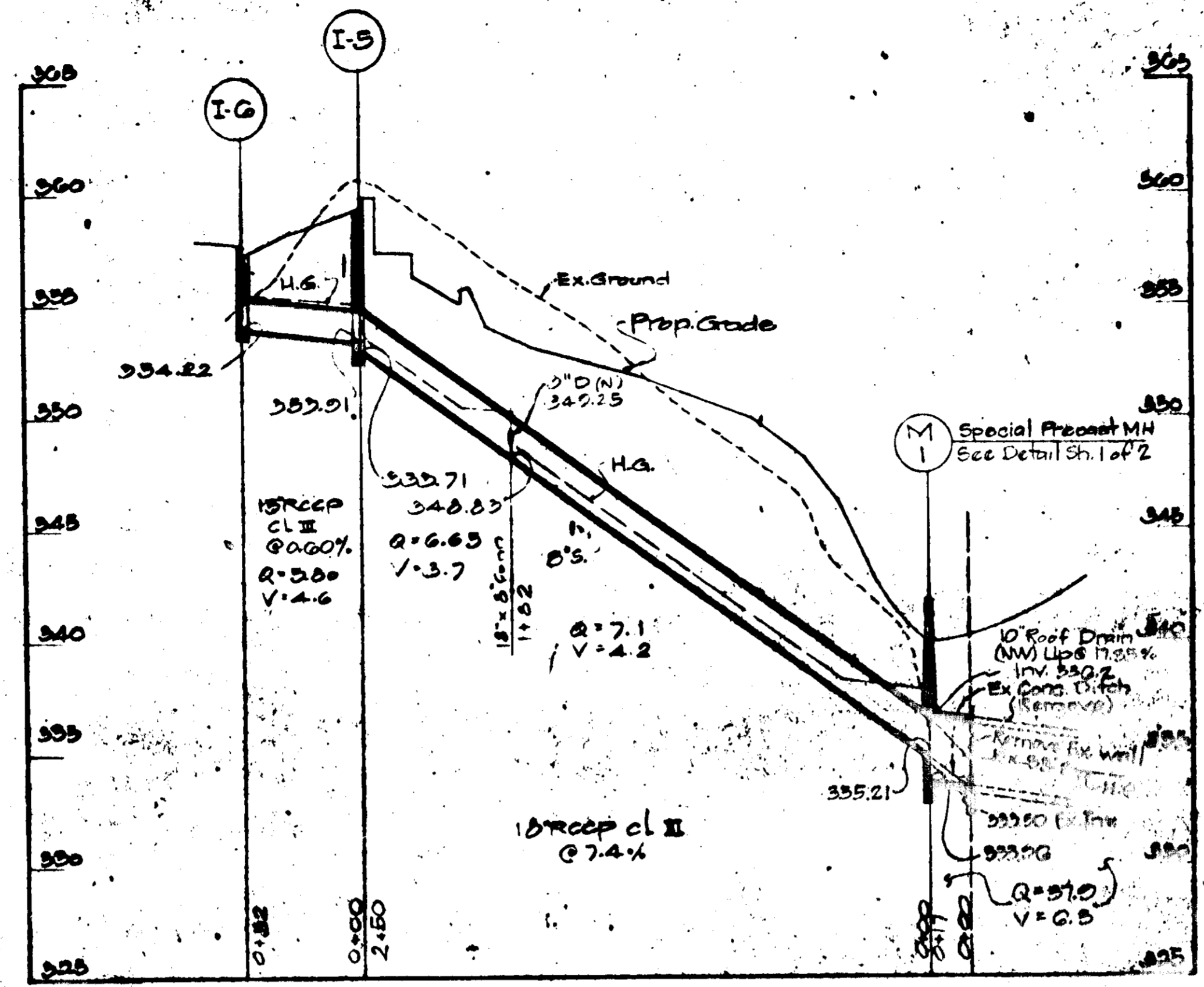
SDP-75-11/1/74 1974

APPROVED FOR PUBLIC WATER & PUBLIC SEWERAGE SYSTEMS, HOWARD COUNTY HEALTH DEPARTMENT
 COUNTY HEALTH OFFICER DATE
 APPROVED: HOWARD COUNTY OFFICE OF PLANNING ZONING
 PLANNING DIRECTOR DATE
 CHIEF DIVISION OF LAND DEVELOPMENT AND TRANSPORTATION PLANNING DATE
 APPROVED FOR PUBLIC WATER, PUBLIC SEWERAGE AND STORM DRAINAGE SYSTEMS & ROAD HOWARD COUNTY DEPARTMENT OF PUBLIC WORKS
 DIRECTOR DATE
 CHIEF BUREAU OF HIGHWAYS DATE

APPROVED
 DIVISION OF LAND DEVELOPMENT AND TRANSPORTATION PLANNING
 HOWARD COUNTY, MARYLAND
 DATE 11/6/74
 J. Kay

STRUCTURE SCHEDULE			
NO	TYPE	TOP ELEV.	REMARKS
1	TYPE 'S' Comb.	356.00	Std. Dwg. D-99
2	TYPE 'S' Comb.	351.50	Std. Dwg. D-99
3	TYPE 'C' Endwall	-	Std. Dwg. D-92
4	Trench Drain	353.30	
5	TYPE 'S' Comb.	352.80	Std. Dwg. D-99
6	TYPE 'S' Comb.	352.40	Std. Dwg. D-99

* Top of pre-cast head given for 'S' Comb.
 Top of grate for Trench Drain



REVISIONS	
No.	Description
1	10/5/74 Added M-1, changed length of 10' roof drain

DEVELOPER:
 Lilla Rotta, INC.
 1299 Lomberton Drive
 Silver Spring, Md
 20900



MCA **ENGINEERING CORPORATION**
 CONSULTING ENGINEERS
 1028 Chestnut Bridge Rd. Baltimore, Md

Election District N#5 Howard County
 Scale: Hor: 1"=50' Date: Sept. 27, 1973
 Vert: 1"=5' Rev. Oct. 5, 1973