

Bench Mark: *55 Elevation 344.50

Cut Corner Conc. Base on Transformer Pad.

GENERAL NOTES

1. EXISTING TOPOGRAPHY AND UTILITIES AS SHOWN HEREON WERE OBTAINED FROM FIELD SURVEYS PREPARED BY HUDKIN'S ASSOCIATES AND DATED APRIL 22, 1974.

2. THE ACCURACY OF EXISTING UNDERGROUND UTILITIES IS NOT GUARANTEED. CONTRACTOR MUST VERIFY ALL UTILITIES TO HIS OWN SATISFACTION.

3. STRUCTURAL MEASURES SUCH AS BERMS, DIKES, TRAPS, BASINS, ETC. WILL BE INSTALLED AND STABILIZED ACCORDING TO THIS PLAN PRIOR TO ANY OTHER GRADING, CLEARING OR DISTURBANCE OF THE EXISTING SURFACE OF THE SITE.

4. REMOVE EX. CURB AS NECESSARY TO INSTALL NEW ENTRANCE.

5. THE LOTS OR PARCELS SHOWN ON THIS PLAN ARE SUBJECT TO THE SUPPLEMENTAL SEWER IN-AID-OF CONSTRUCTION CHARGE CREATED BY SECTION 20.311A OF THE HOWARD COUNTY CODE AND TO EXECUTIVE ORDER NO. 72-9.

6. ALL STRUCTURAL SEDIMENT CONTROL MEASURES ARE TO REMAIN IN PLACE UNTIL PERMITS FOR THEIR REMOVAL HAS BEEN OBTAINED FROM THE HOWARD SOIL CONSERVATION DISTRICT, PHONE 465-9180 OR 465-5000 EXT. 926.

7. STABILIZATION OF DISTURBED AREA: AFTER GRADING IS COMPLETE ALL AREAS NOT PAVED SHALL BE STABILIZED AS FOLLOWS:

- A. APPLY 10:10:10 FERTILIZER @ 100 LBS PER ACRE.
B. APPLY GROUND ARCHITECTURAL LIMESTONE OR EQUIVALENT @ 1 TON/ACRE
C. INCORPORATE LIME & FERTILIZER BY DISCING
D. PLANT AREA TO FOLLOWING SEED MIXTURE: 50% KENTUCKY BLUE GRASS, 40% CREEPING RED FESCUE AT 3 LB./1000 SQFT.

8. NOTIFY THE HOWARD SOIL CONSERVATION DISTRICT AT LEAST 24 HOURS BEFORE STARTING ANY WORK, PHONE 465-9180 OR 465-5000 EXT. 926.

9. ALL INLETS TO BE CAPPED AS SOON AS INSTALLED AND TO REMAIN INOPERABLE UNTIL ALL AREAS UPGRADE ARE STABILIZED BY BUILDING, PAVING OR SEEDING.

10. THE LOTS OR PARCELS SHOWN ON THIS PLAN ARE SUBJECT TO THE SUPPLEMENTAL SEWER IN-AID-OF CONSTRUCTION CHARGE CREATED BY SECTION 20.311A OF THE HOWARD COUNTY CODE AND TO EXECUTIVE ORDER NO. 72-9.

11. TACK COAT
12. PRIME COAT
13. 6" CRUSHER RUN BASE COURSE (2 COURSES)

14. 1 1/2" BIT. CONC. SURFACE COURSE, BAND C-5
15. TACK COAT
16. 5" BIT. CONC. BINDER COURSE (GRAVEL MIX)

17. 1 1/2" BIT. CONC. SURFACE COURSE, BAND C-5
18. TACK COAT
19. 5" BIT. CONC. BINDER COURSE (GRAVEL MIX)

20. 1 1/2" BIT. CONC. SURFACE COURSE, BAND C-5
21. TACK COAT
22. 5" BIT. CONC. BINDER COURSE (GRAVEL MIX)

23. 1 1/2" BIT. CONC. SURFACE COURSE, BAND C-5
24. TACK COAT
25. 5" BIT. CONC. BINDER COURSE (GRAVEL MIX)

26. 1 1/2" BIT. CONC. SURFACE COURSE, BAND C-5
27. TACK COAT
28. 5" BIT. CONC. BINDER COURSE (GRAVEL MIX)

29. 1 1/2" BIT. CONC. SURFACE COURSE, BAND C-5
30. TACK COAT
31. 5" BIT. CONC. BINDER COURSE (GRAVEL MIX)

32. 1 1/2" BIT. CONC. SURFACE COURSE, BAND C-5
33. TACK COAT
34. 5" BIT. CONC. BINDER COURSE (GRAVEL MIX)

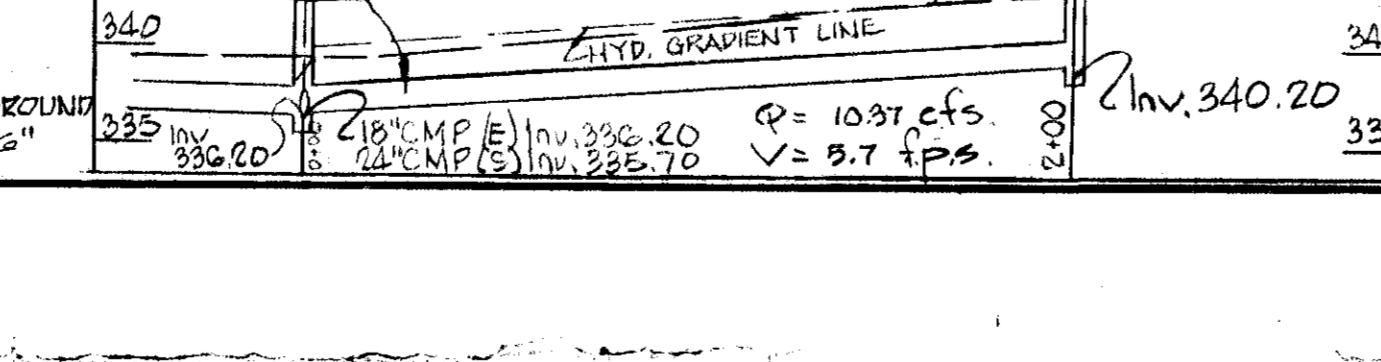
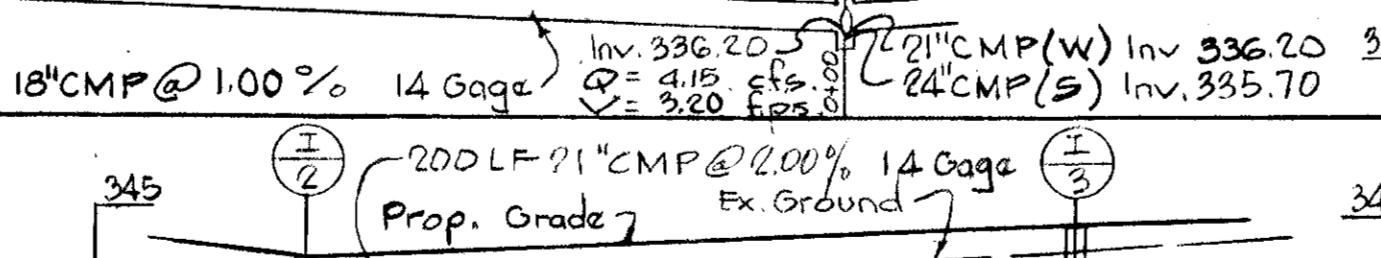
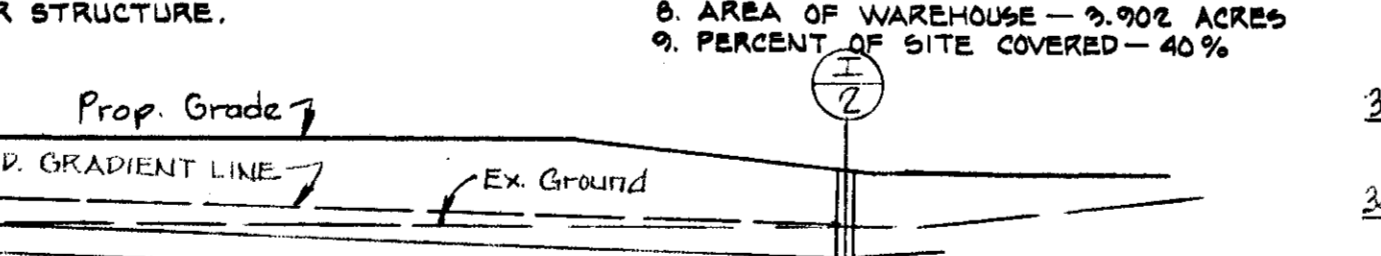
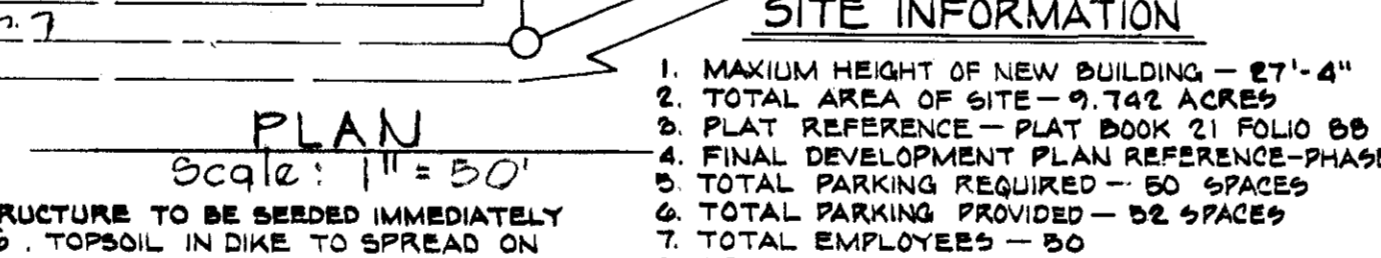
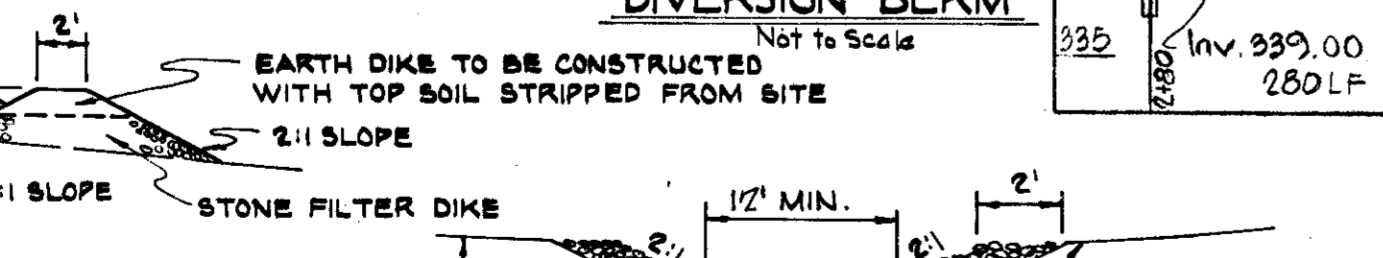
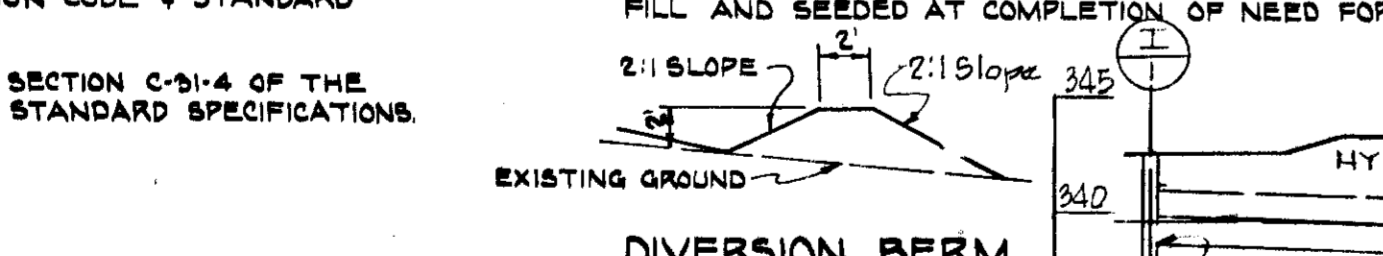
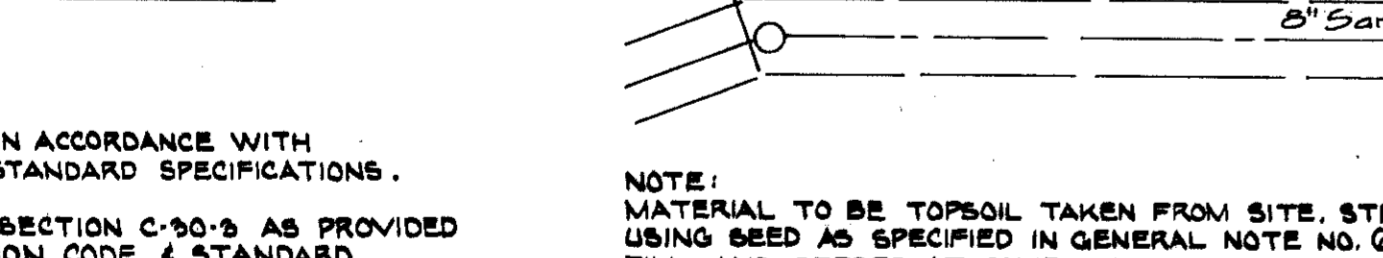
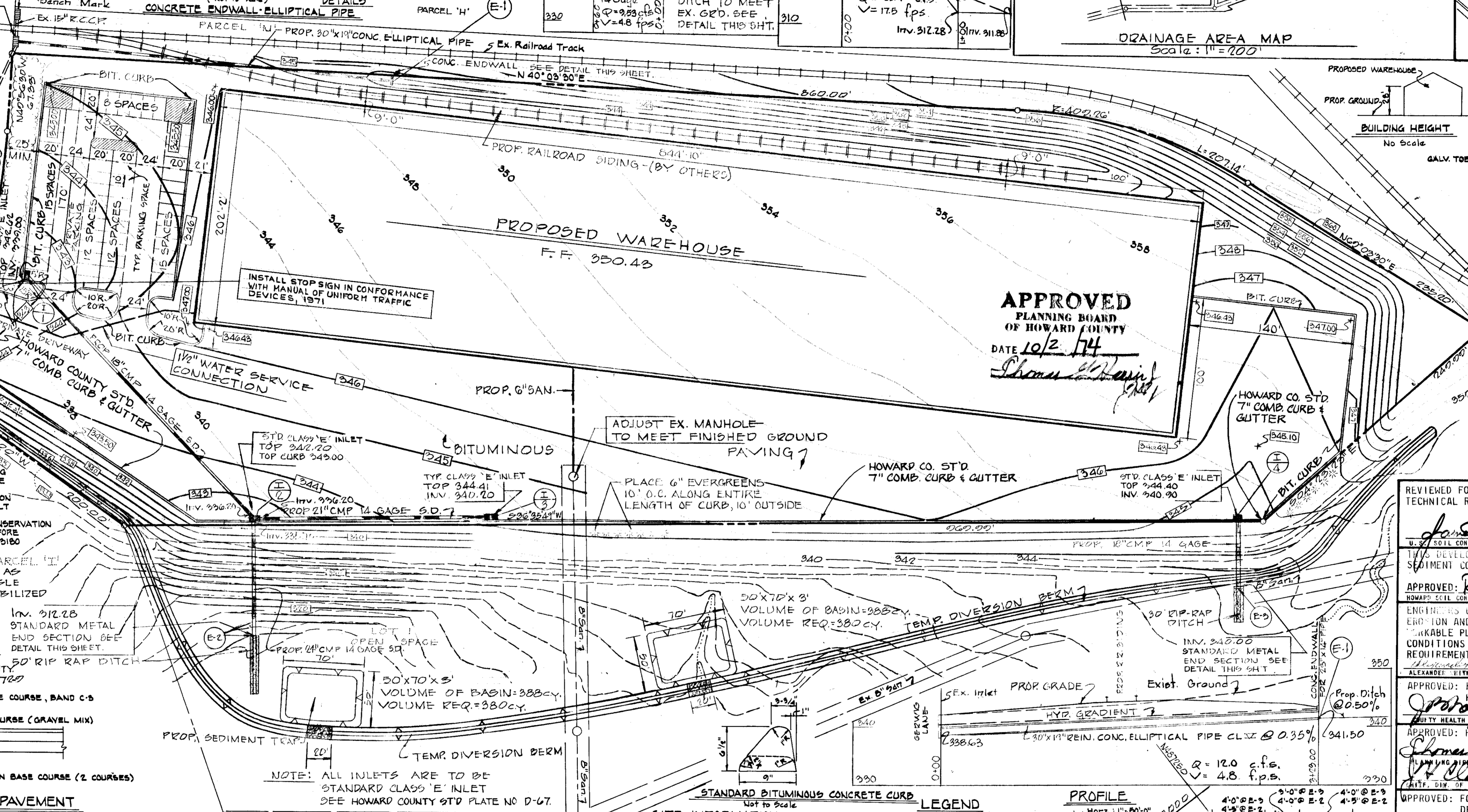
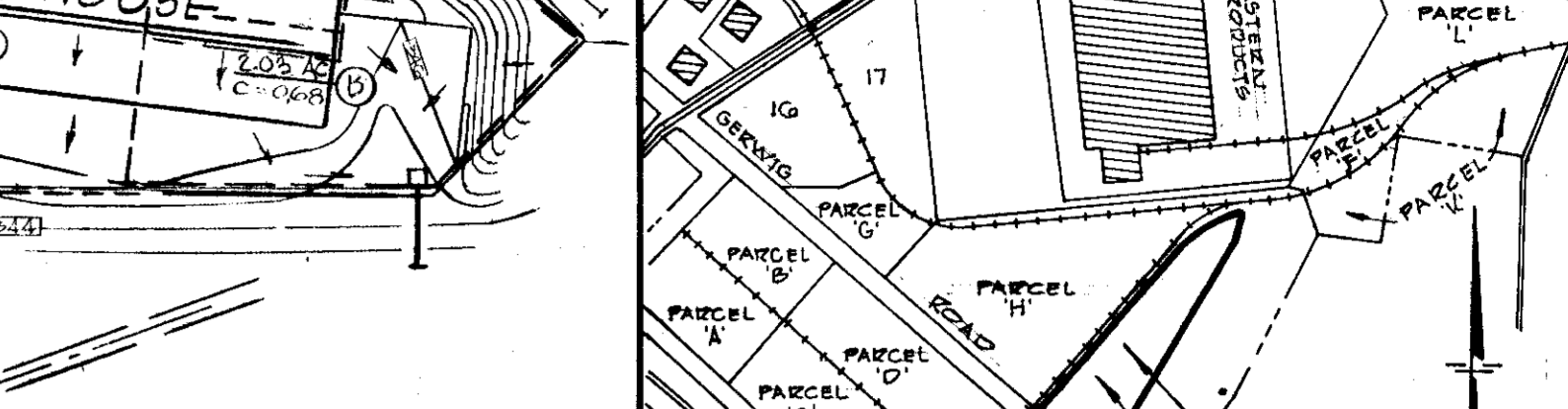
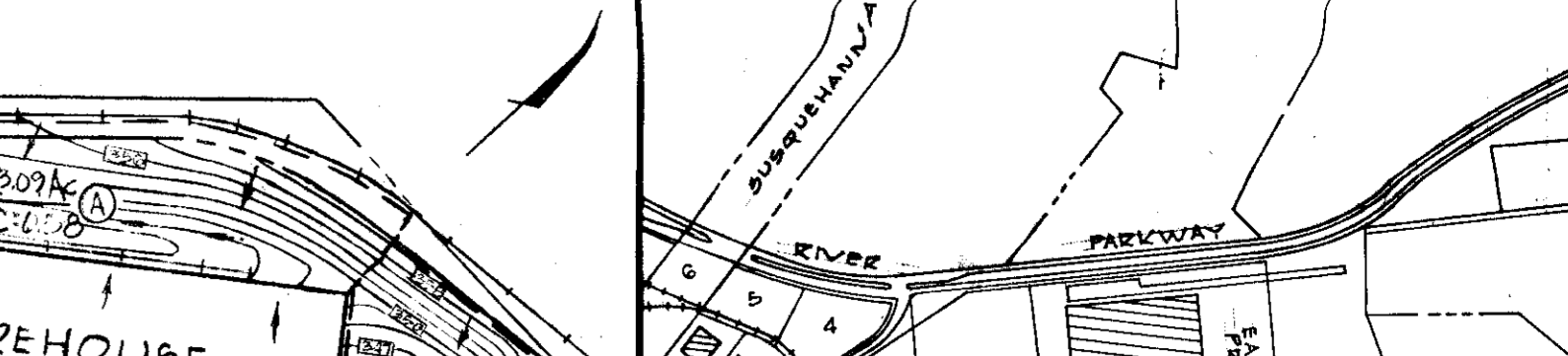
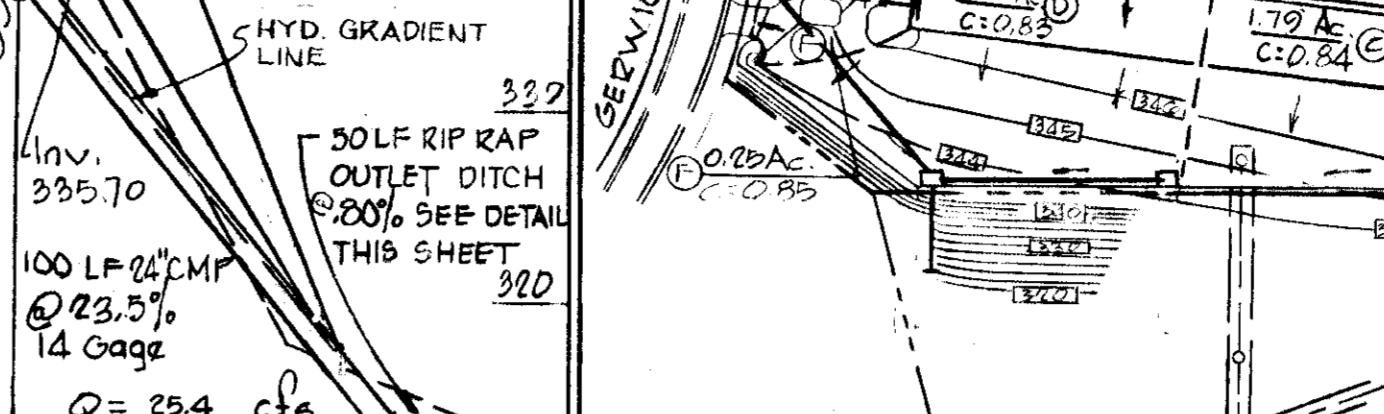
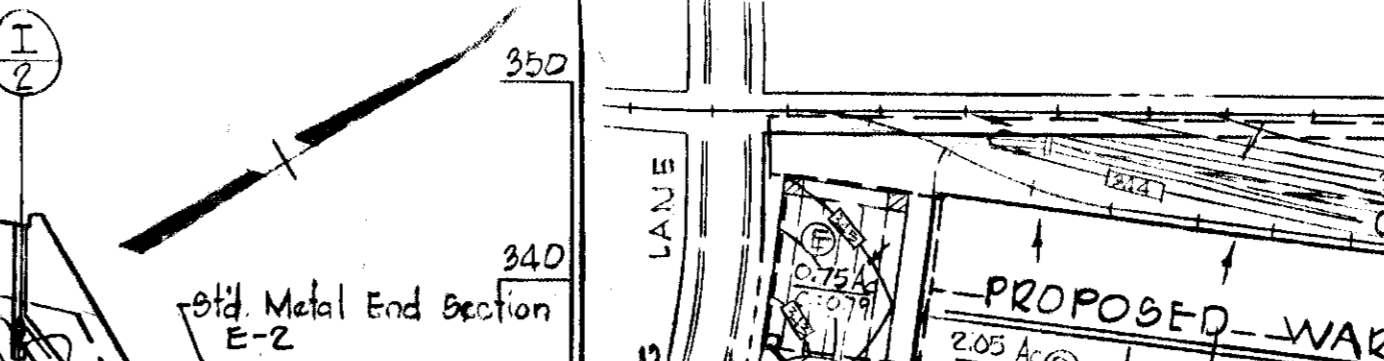
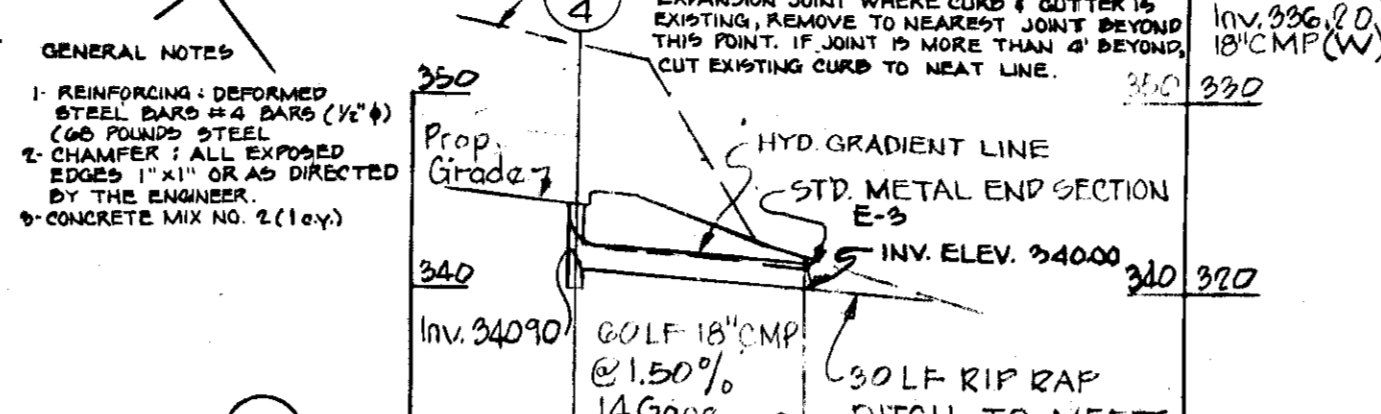
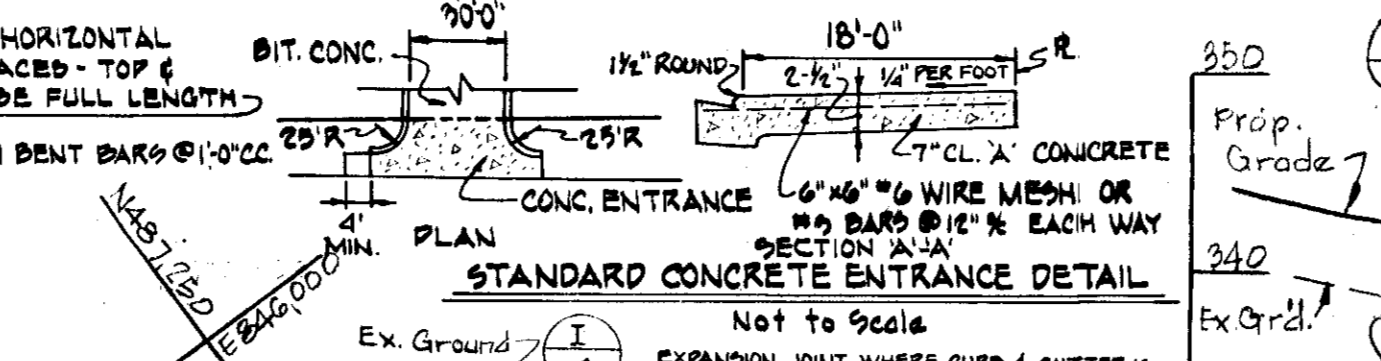
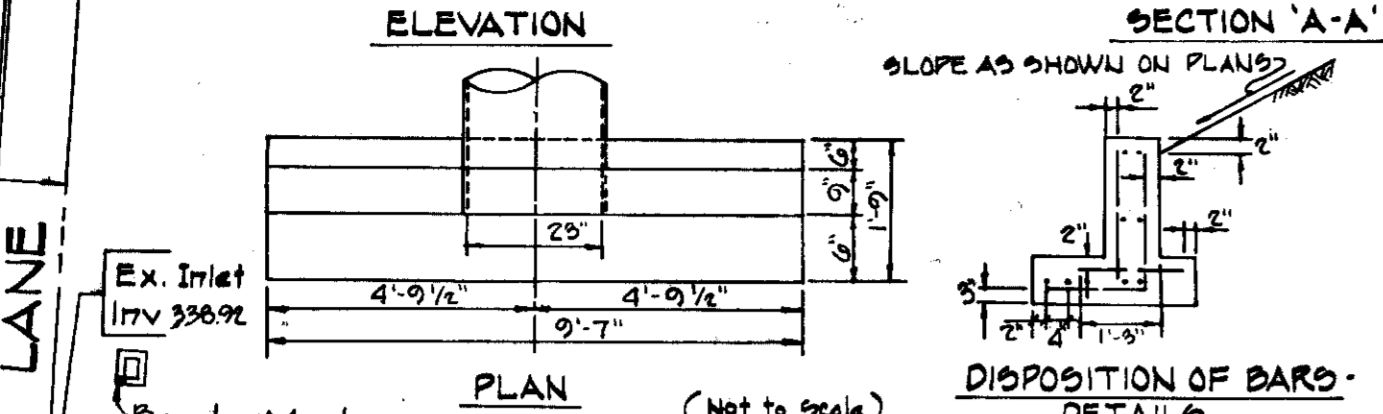
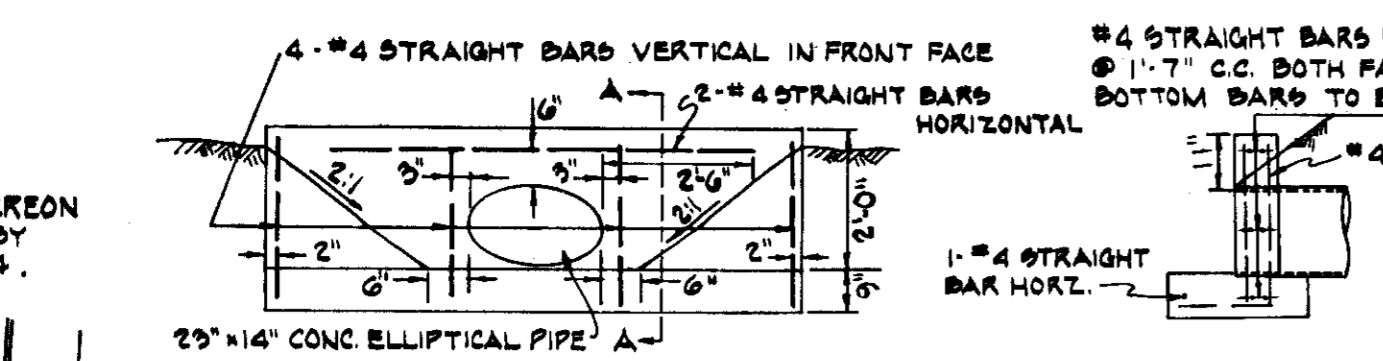


Table with columns: NO., TOP ELEV., INVERT ELEV., REMARK. Lists various pipe and structure elevations.

Table with columns: DATE, REVISIONS. Lists project revisions and dates.

APPROVED PLANNING BOARD OF HOWARD COUNTY DATE 10/2/74. Includes signatures and dates of approvals.

PROPOSED WAREHOUSE details including parcel information, subdivision, and builder information.