

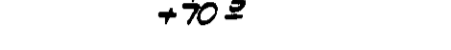






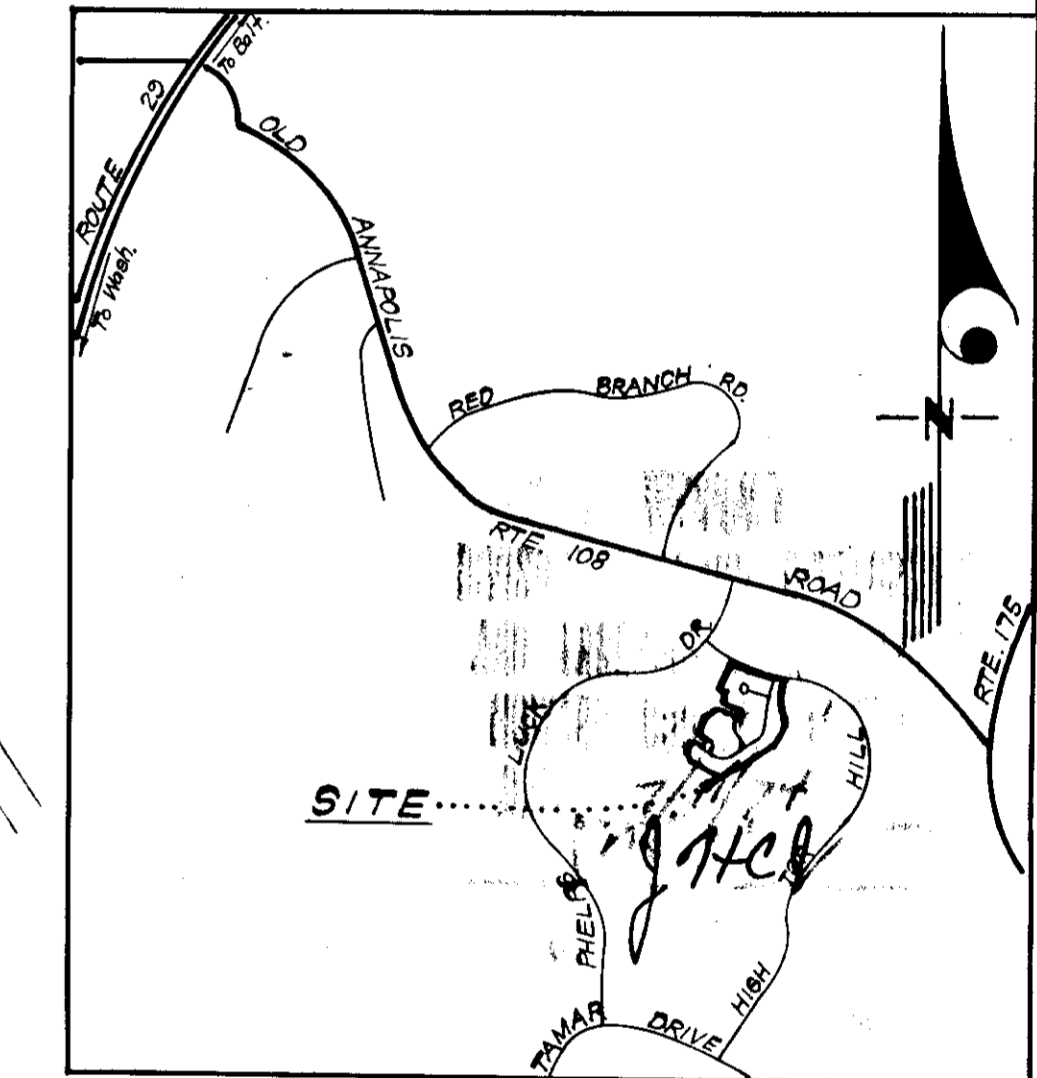


GENERAL NOTES

1. These lots are covered by Final Development Plan Phase 77-A2 recorded in Plat Book 20 Folios 36&37 and Phase 77-A recorded in Plat Book 19 Folio 118
2. The Area covered in this submission (sheets 1 & 2) is located on Tax Map N230

LEGEND

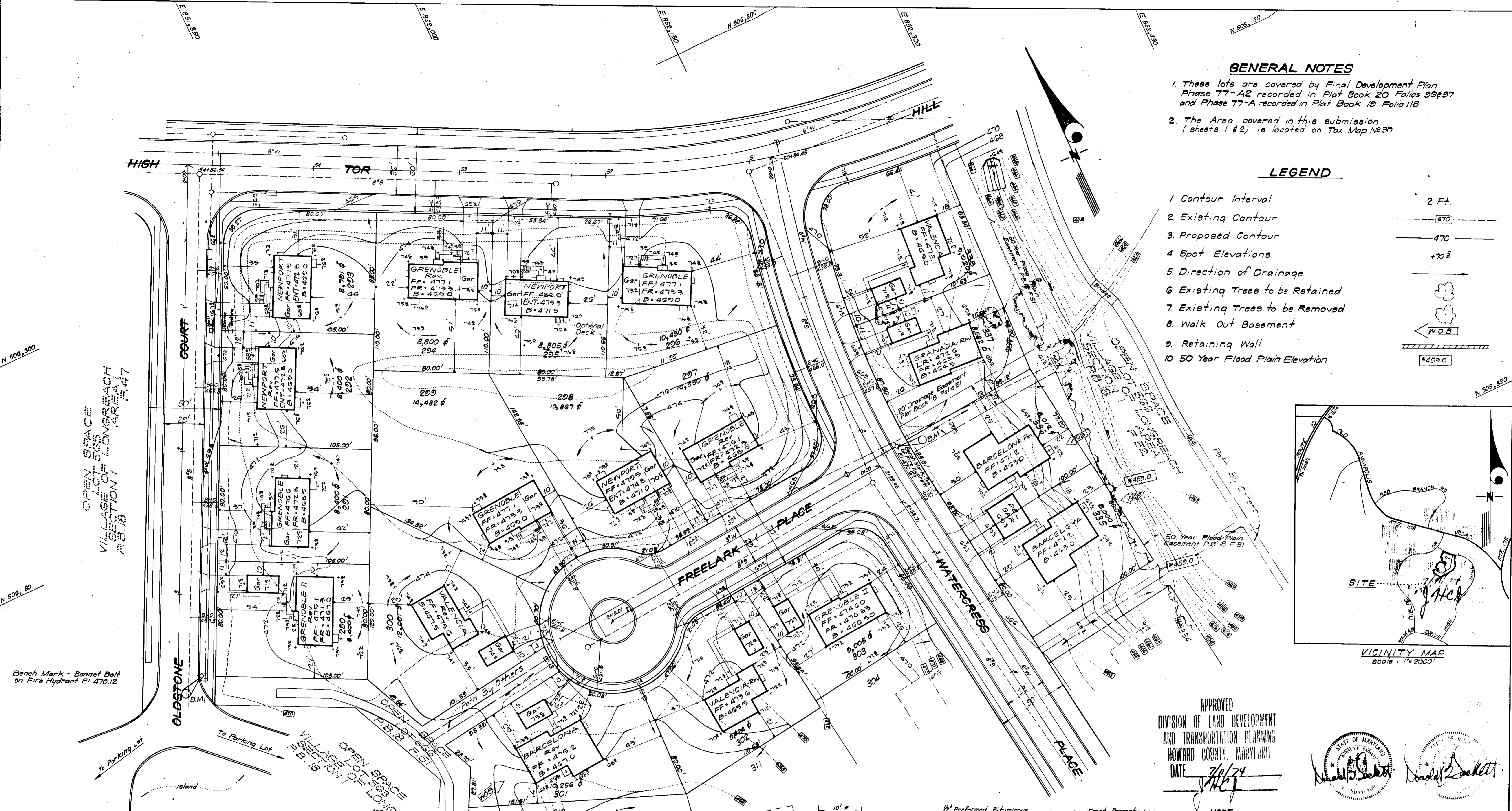
1. Contour Interval 2 Ft.
2. Existing Contour 
3. Proposed Contour 
4. Spot Elevations +70.5 
5. Direction of Drainage 
6. Existing Trees to be Retained 
7. Existing Trees to be Removed 
8. Walk Out Basement 
9. Retaining Wall 
10. 50 Year Flood Plain Elevation 



APPROVED
DIVISION OF LAND DEVELOPMENT
AND TRANSPORTATION PLANNING
HOWARD COUNTY, MARYLAND
DATE: 7/1/74
[Signature]

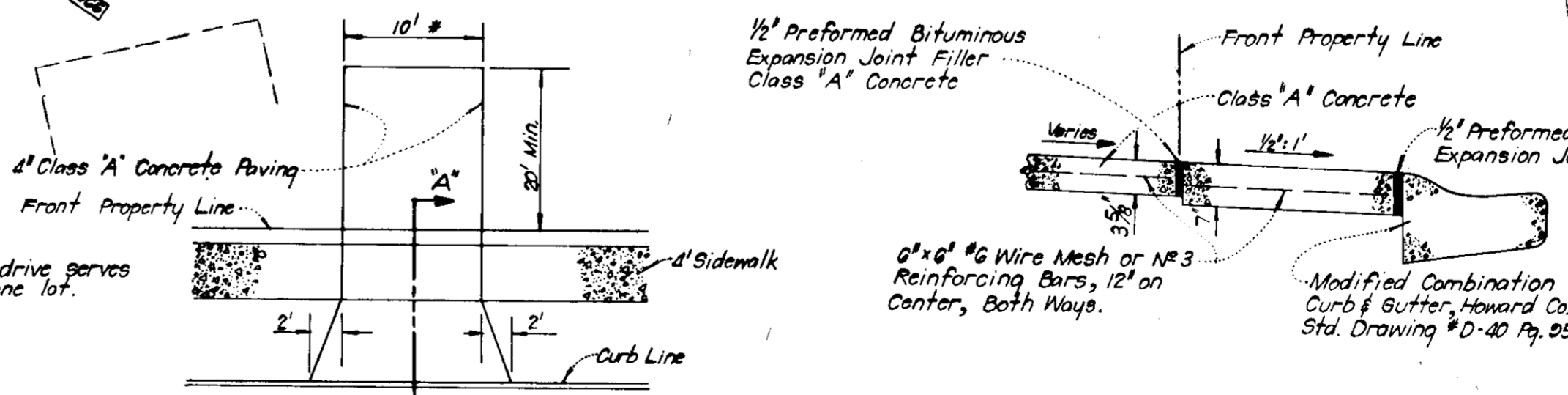


NOTE: For bearings and distances of individual lot lines, see record plat recorded in Plat Book 18, Folio 51



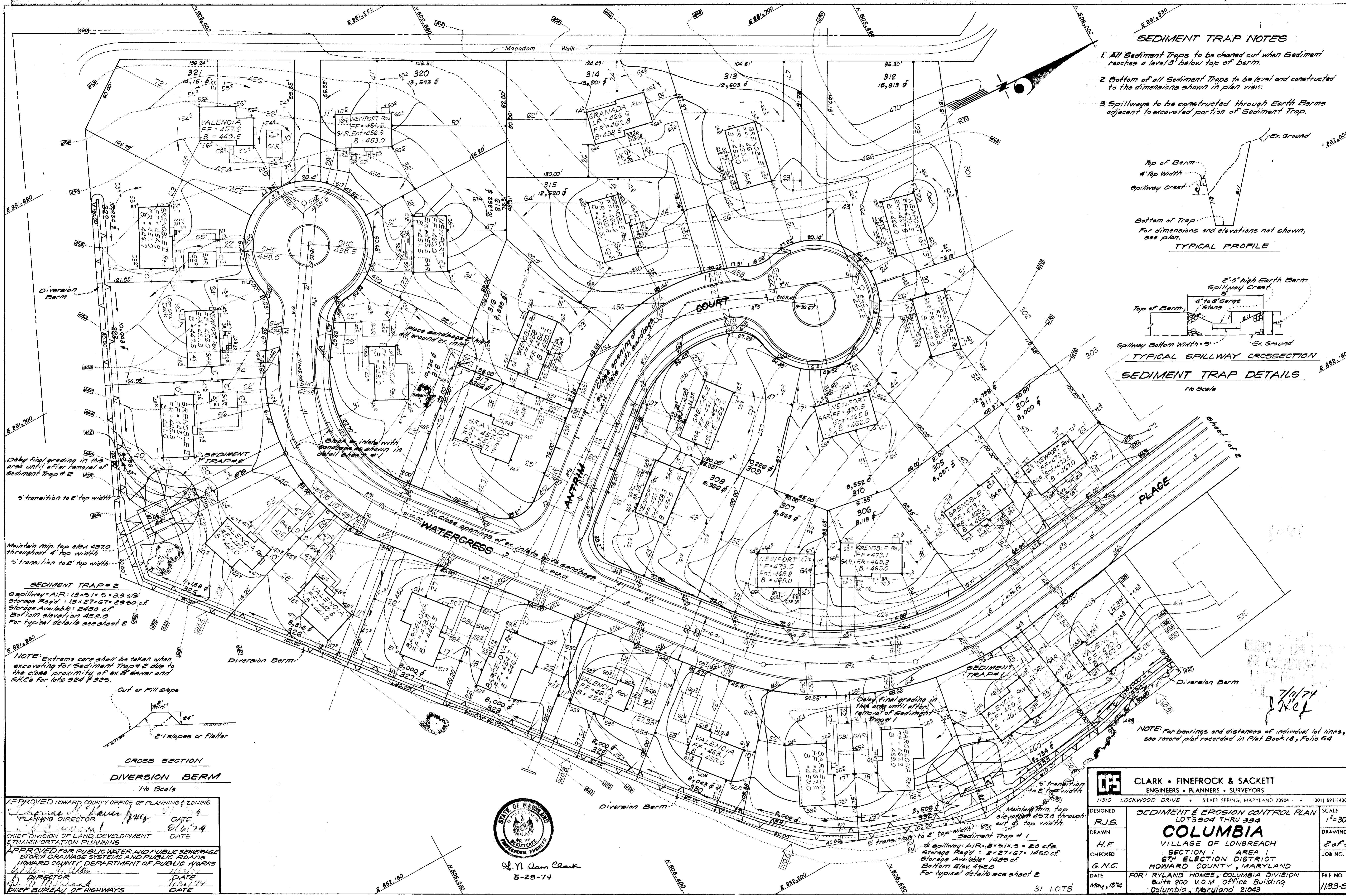
Bench Mark - Bonnet Bolt on Fire Hydrant El. 470.12

APPROVED FOR PUBLIC WATER AND PUBLIC SEWERAGE SYSTEMS, HOWARD COUNTY HEALTH DEPARTMENT
8/1/74
DATE
APPROVED HOWARD COUNTY OFFICE OF PLANNING & ZONING
7/1/74
DATE
APPROVED FOR PUBLIC WATER AND PUBLIC SEWERAGE STORM DRAINAGE SYSTEMS AND PUBLIC ROADS HOWARD COUNTY DEPARTMENT OF PUBLIC WORKS
7/20/74
DATE
7/30/74
DATE

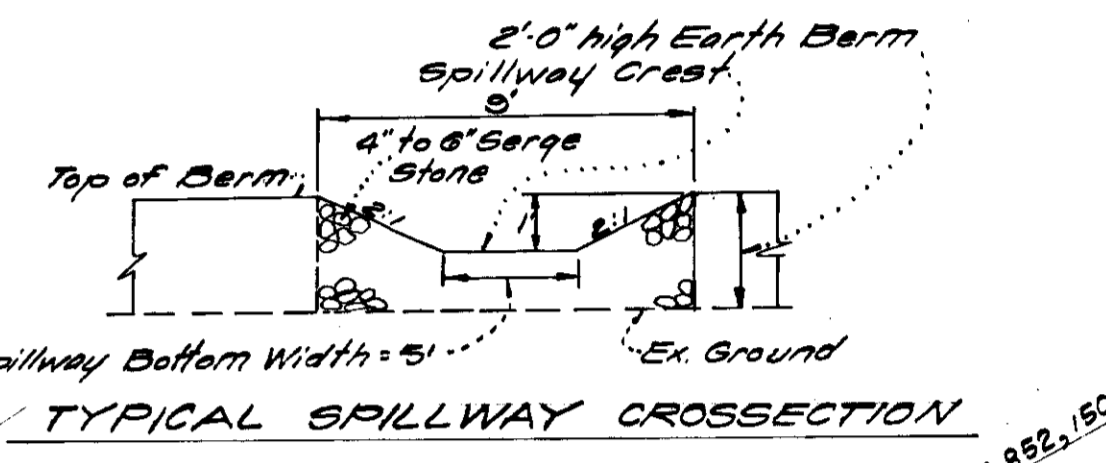
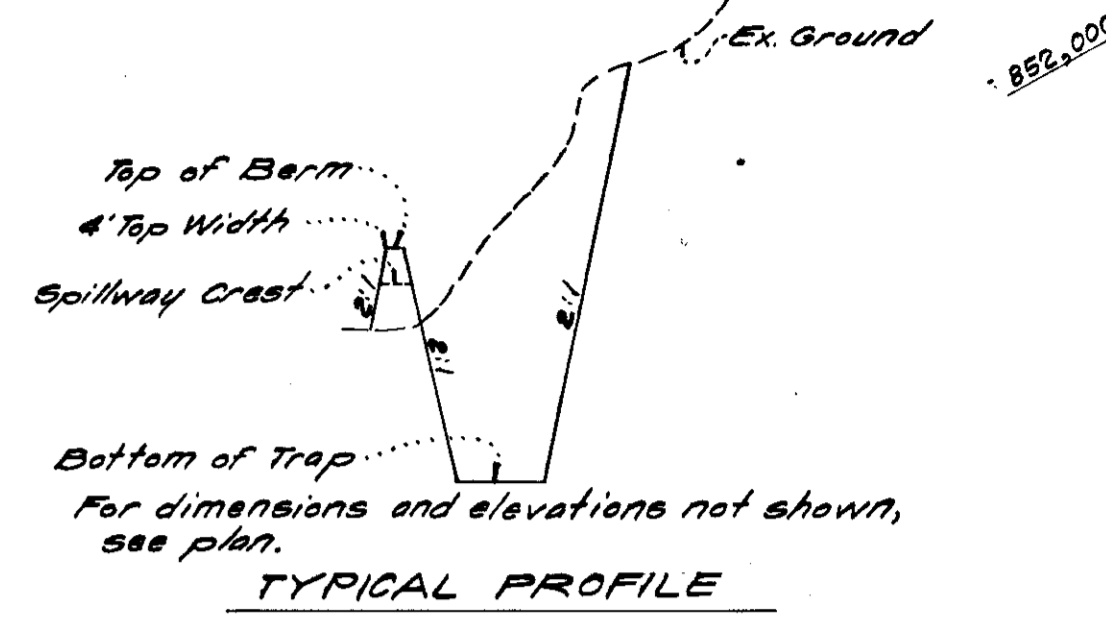


NOTE: Use Residential Driveway Entrance, Howard Co. Ord. #D-34 P. 80, except where Driveway Abuts Mod. Comb. Curb & Gutter.

CLARK • FINEFROCK & SACKETT ENGINEERS • PLANNERS • SURVEYORS 11315 LOCKWOOD DRIVE • SILVER SPRING, MARYLAND 20904 • (301) 593-3400		
DESIGNED W.R.M.E.	DEVELOPMENT PLAN LOTS 290 THRU 303 & 335 THRU 338	SCALE 1"=30'
DRAWN R.P.R.	COLUMBIA VILLAGE OF LONGREACH	DRAWING 1 OF 2
CHECKED W.R.M.E.	SECTION 1 AREA 1 6TH ELECTION DISTRICT HOWARD COUNTY, MARYLAND	JOB NO.
DATE May, 1974	FOR: RYLAND HOMES, COLUMBIA DIVISION Suite 200 V.O.M. Office Building Columbia, Maryland 21043	FILE NO. 1030-X



- SEDIMENT TRAP NOTES**
- All Sediment Traps to be cleared out when Sediment reaches a level 3' below top of berm.
 - Bottom of all Sediment Traps to be level and constructed to the dimensions shown in plan view.
 - Spillways to be constructed through Earth Berms adjacent to excavated portion of Sediment Trap.



SEDIMENT TRAP DETAILS
No Scale

Delay final grading in this area until after removal of Sediment Trap # 2

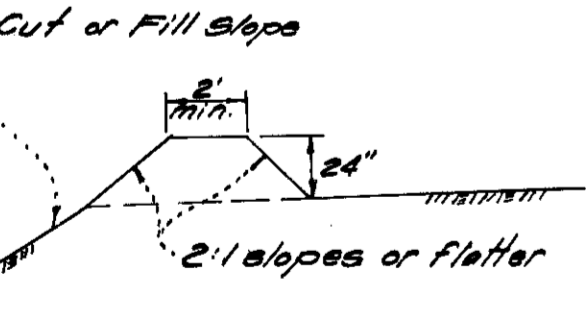
5' transition to 2' top width

Maintain min. top elev. 457.0 throughout 4' top width

5' transition to 2' top width

SEDIMENT TRAP # 2
Spillway: AIR: 13x5.1x5 = 33 cfs
Storage Reg'd: 13x27x67 = 2350 cfs
Storage Available: 2490 cfs
Bottom Elevation: 452.0
For typical details see sheet 2

NOTE: Extreme care shall be taken when excavating for Sediment Trap # 2 due to the close proximity of ex. S. sewer and SHC's for lots 322 & 325.



CROSS SECTION DIVERSION BERM
No Scale

APPROVED HOWARD COUNTY OFFICE OF PLANNING & ZONING

PLANNING DIRECTOR: *[Signature]* DATE: 8/16/74

CHIEF DIVISION OF LAND DEVELOPMENT & TRANSPORTATION PLANNING

APPROVED FOR PUBLIC WATER AND PUBLIC SEWERAGE, STORM DRAINAGE SYSTEMS AND PUBLIC ROADS

HOWARD COUNTY, DEPARTMENT OF PUBLIC WORKS

DIRECTOR: *[Signature]* DATE: 7/24/74

CHIEF BUREAU OF HIGHWAYS



L. N. Lam Clark
5-28-74

Delay final grading in this area until after removal of Sediment Trap # 1

5' transition to 2' top width

5' transition to 2' top width

SEDIMENT TRAP # 1
Spillway: AIR: 8x5.1x5 = 20 cfs
Storage Reg'd: 8x27x67 = 1450 cfs
Storage Available: 1485 cfs
Bottom Elev. 452.0
For typical details see sheet 2

NOTE: For bearings and distances of individual lot lines, see record plat recorded in Plat Book 18, Folio 54

CLARK • FINEROCK & SACKETT ENGINEERS • PLANNERS • SURVEYORS 11315 LOCKWOOD DRIVE • SILVER SPRING, MARYLAND 20904 • (301) 593-3400		SCALE 1" = 30'
DESIGNED R.J.S.	SEDIMENT & EROSION CONTROL PLAN LOTS 304 THRU 334 COLUMBIA VILLAGE OF LONGREACH SECTION 1 AREA 1 6TH ELECTION DISTRICT HOWARD COUNTY, MARYLAND	
DRAWN H.F.	DRAWING 2 of 2	
CHECKED G.N.C.	JOB NO.	
DATE May, 1974	FILE NO. 1133-SE	

7/11/74
JNEP