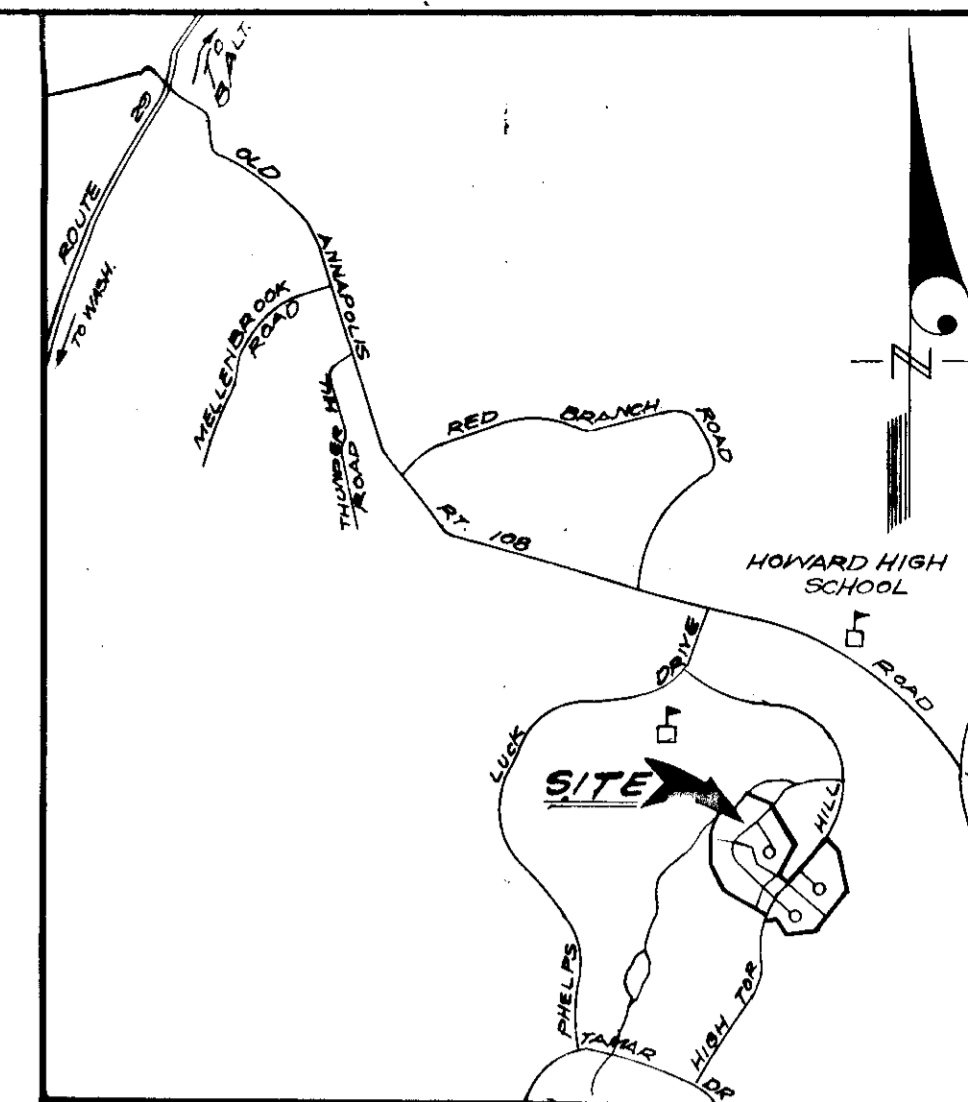
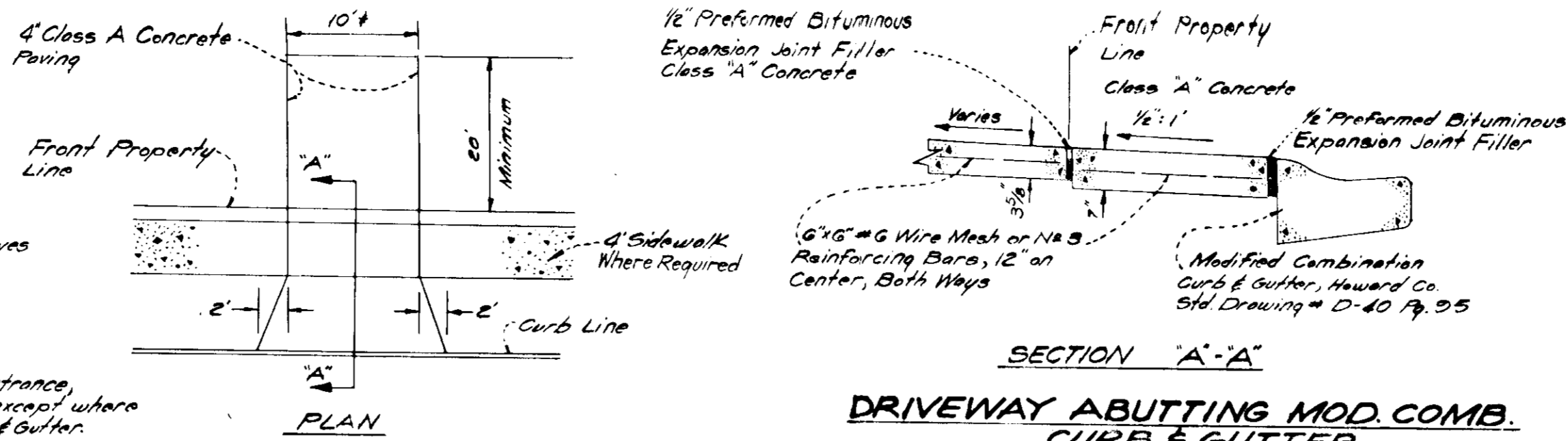


1524.350 E 852.850

NOTE: Use Residential Driveway Entrance, Howard Co. Div. # D-34 Pg. 85, except where Driveway Abuts Mod. Comb. Curb & Gutter.

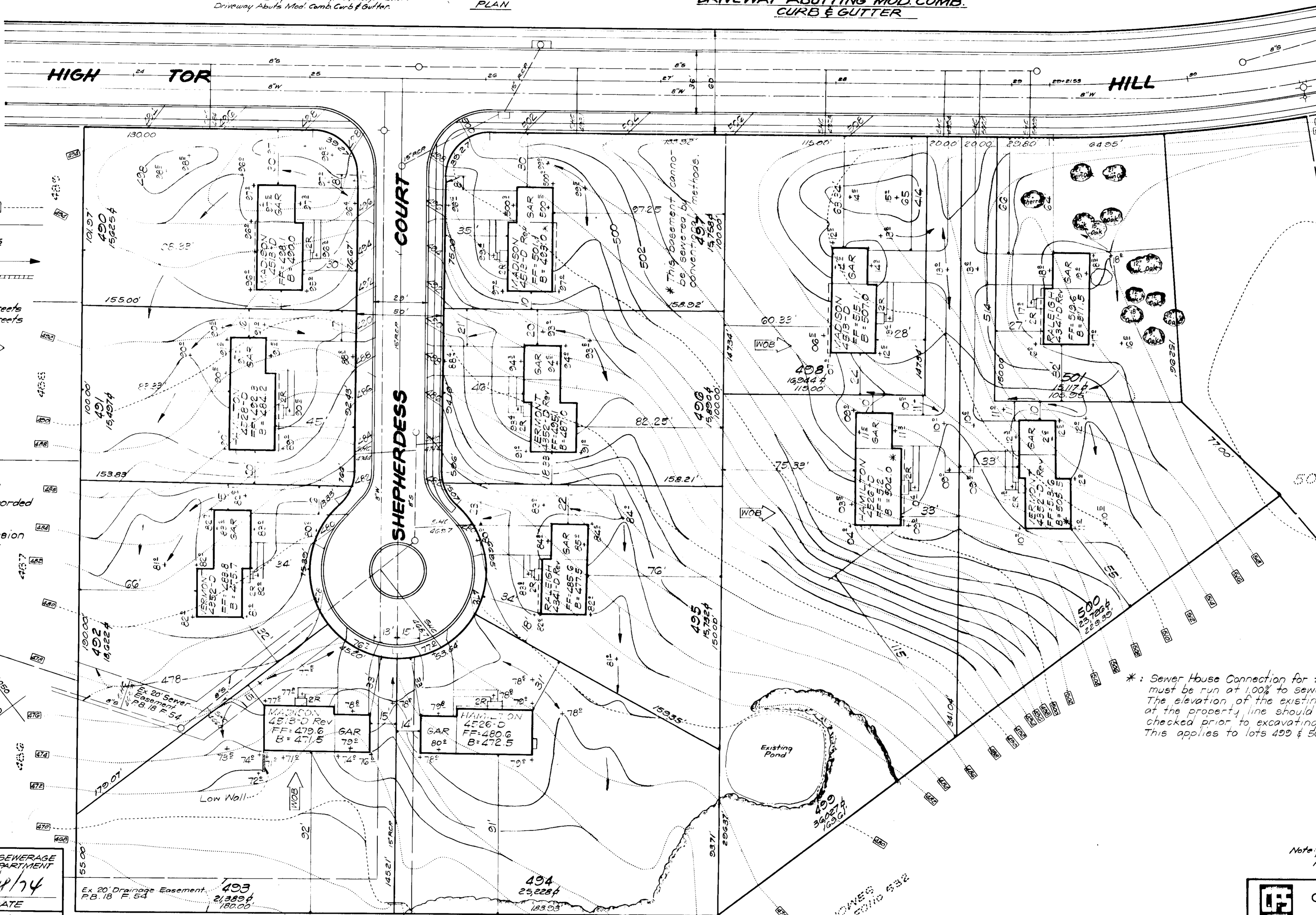


LEGEND

1. Contour Interval 2 FT.
2. Existing Contours 490
3. Proposed Contours 490
4. Spot Elevations +20.5
5. Direction Of Drainage
6. Retaining Wall
7. Yard Requirements:
Front - 20' On 50' Wide Streets
30' On 60' Wide Streets
Side - 7.5' (Min.)
8. Walk Out Basement
9. Existing Trees To Be Retained

GENERAL NOTES

1. These lots are covered by Final Development Plan Phase 77-A2 recorded in Plat Book 20 Folios 96 and 97
2. The Area covered in this submission (Sheets 1 thru 4) is located on Tax Maps No 30 & 36.



*: Sewer House Connection for this lot must be run at 100% to sewer basement. The elevation of the existing connection at the property line should be field checked prior to excavating for basement. This applies to lots 499 & 500.

1/5/74
J. K. [Signature]



APPROVED FOR PUBLIC WATER AND PUBLIC SEWERAGE SYSTEMS, HOWARD COUNTY HEALTH DEPARTMENT

[Signature] 6/18/74
COUNTY HEALTH OFFICER DATE

APPROVED HOWARD COUNTY OFFICE OF PLANNING & ZONING
[Signature] 6/27/74
PLANNING DIRECTOR DATE

[Signature] 6/19/74
CHIEF DIVISION OF LAND DEVELOPMENT & TRANSPORTATION PLANNING DATE

APPROVED FOR PUBLIC WATER AND PUBLIC SEWERAGE, STORM DRAINAGE SYSTEMS AND PUBLIC WORKS, HOWARD COUNTY DEPARTMENT OF PUBLIC WORKS

[Signature] 6/14/74
DIRECTOR DATE

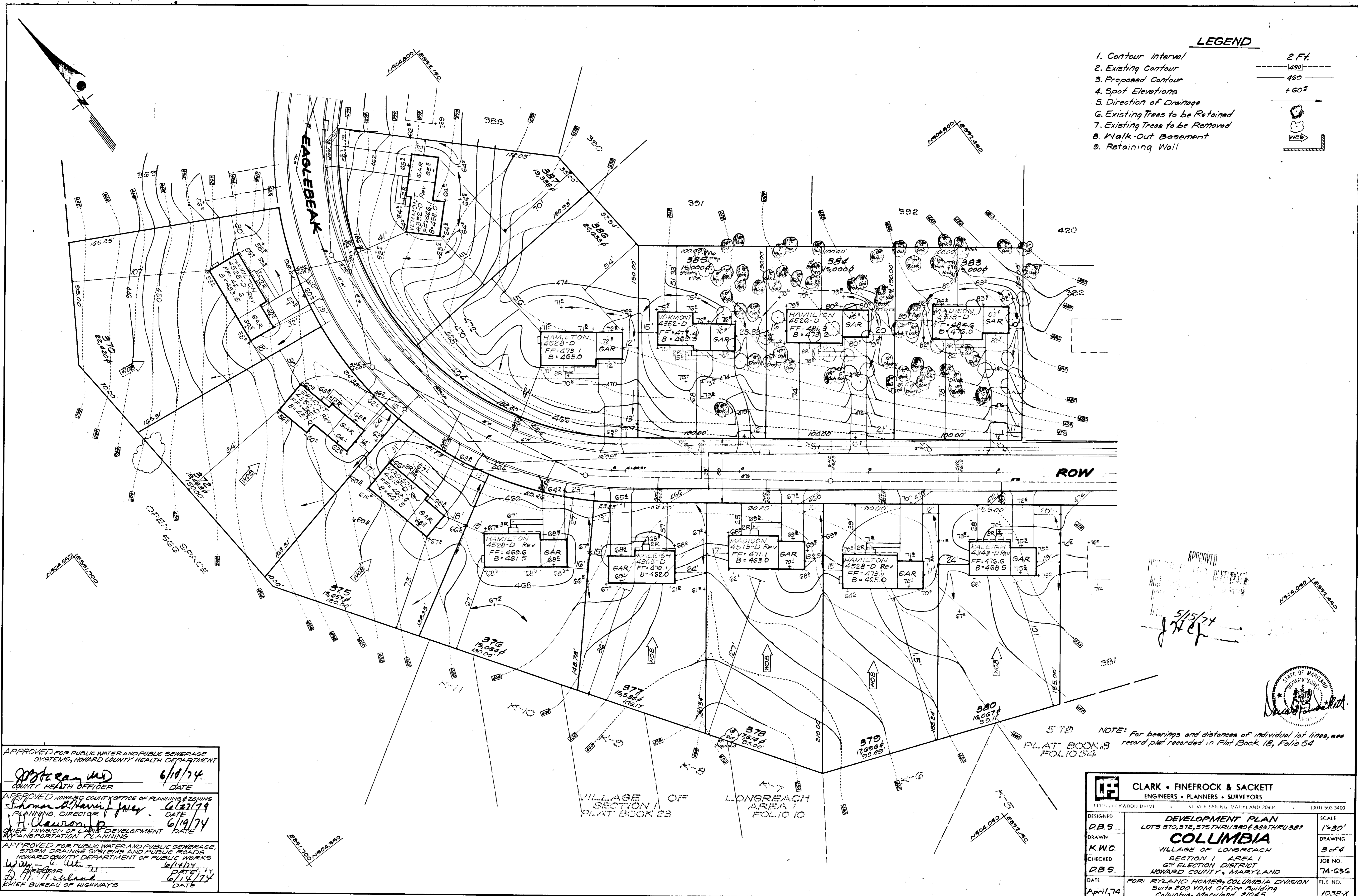
[Signature] 6/14/74
CHIEF BUREAU OF HIGHWAYS DATE

Note: For bearings and distances of individual lot lines, see record plat recorded in Plat Book 18, Folio 54.

CLARK • FINEFROCK & SACKETT ENGINEERS • PLANNERS • SURVEYORS 11115 LICKWOOD DRIVE SILVER SPRING, MARYLAND 20904 (301) 593-3400		
DESIGNED	DBS	DEVELOPMENT PLAN
DRAWN	K.W.C.	LOTS 490 THRU 501
CHECKED	DBS	COLUMBIA
DATE	April, 74	VILLAGE OF LONGREACH
		SECTION 1, AREA 1
		6 TH ELECTION DISTRICT
		HOWARD COUNTY, MARYLAND
		FOR: RYLAND HOMES, COLUMBIA DIVISION
		Suite 200 VOM Office Building
		Columbia, Maryland 21043
SCALE	1" = 30'	
DRAWING	1 of 4	
JOB NO.	74-C-3-C	
FILE NO.	1035-X	

LEGEND

1. Contour Interval 2 Ft.
2. Existing Contour ---
3. Proposed Contour ---
4. Spot Elevations +
5. Direction of Drainage →
6. Existing Trees to be Retained (Tree Symbol)
7. Existing Trees to be Removed (Tree Symbol)
8. Walk-Out Basement (WOB)
9. Retaining Wall (Wall Symbol)



APPROVED
5/5/74
J.H.C.



NOTE: For bearings and distances of individual lot lines, see record plat recorded in Plat Book 13, Folio 54

APPROVED FOR PUBLIC WATER AND PUBLIC SEWERAGE SYSTEMS, HOWARD COUNTY HEALTH DEPARTMENT
 [Signature] 6/10/74
 COUNTY HEALTH OFFICER DATE

APPROVED HOWARD COUNTY OFFICE OF PLANNING & ZONING
 [Signature] 6/27/74
 PLANNING DIRECTOR DATE

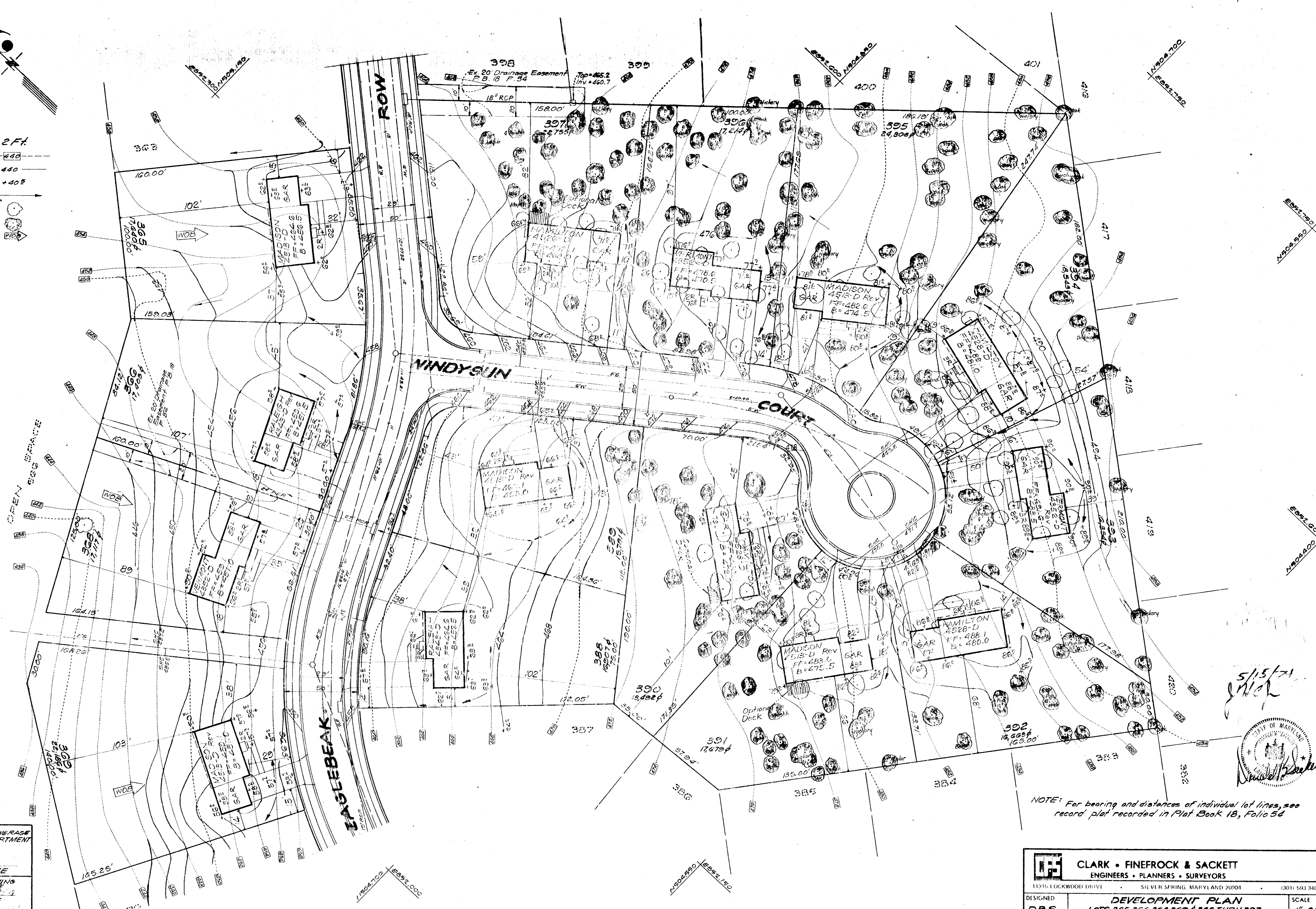
[Signature] 6/19/74
 CHIEF DIVISION OF LAND DEVELOPMENT DATE
 TRANSPORTATION PLANNING

APPROVED FOR PUBLIC WATER AND PUBLIC SEWERAGE, STORM DRAINAGE SYSTEMS AND PUBLIC ROADS, HOWARD COUNTY DEPARTMENT OF PUBLIC WORKS
 [Signature] 6/14/74
 [Signature] 6/14/74
 CHIEF BUREAU OF HIGHWAYS DATE

CLARK • FINEFROCK & SACKETT ENGINEERS • PLANNERS • SURVEYORS 11311 LOCKWOOD DRIVE SILVER SPRING, MARYLAND 20904 (301) 563-3400		
DESIGNED	DEVELOPMENT PLAN	SCALE
D.B.S.	LOTS 370, 372, 375 THRU 380 & 383 THRU 387	1"=30'
DRAWN	COLUMBIA	DRAWING
K.W.C.	VILLAGE OF LONGREACH	3 of 4
CHECKED	SECTION I AREA I	JOB NO.
D.B.S.	6 TH ELECTION DISTRICT	74-036
DATE	HOWARD COUNTY, MARYLAND	FILE NO.
April, 74	FOR: RYLAND HOMES, COLUMBIA DIVISION	1038-X
	Suite 200 VOM Office Building	
	Columbia, Maryland 21045	

LEGEND

- 1. Contour Interval 2 Ft.
- 2. Existing Contour
- 3. Proposed Contour
- 4. Spot Elevations
- 5. Direction of Drainage
- 6. Existing Trees to be Removed
- 7. Existing Trees to be Retained
- 8. Walk-Out Basement



5/15/74
JWB



NOTE: For bearing and distances of individual lot lines, see record plat recorded in Plat Book 18, Folio 54

APPROVED FOR PUBLIC WATER AND PUBLIC SEWERAGE SYSTEMS, HOWARD COUNTY HEALTH DEPARTMENT

COUNTY HEALTH OFFICER _____ DATE _____

APPROVED HOWARD COUNTY OFFICE OF PLANNING & ZONING

PLANNING DIRECTOR _____ DATE _____

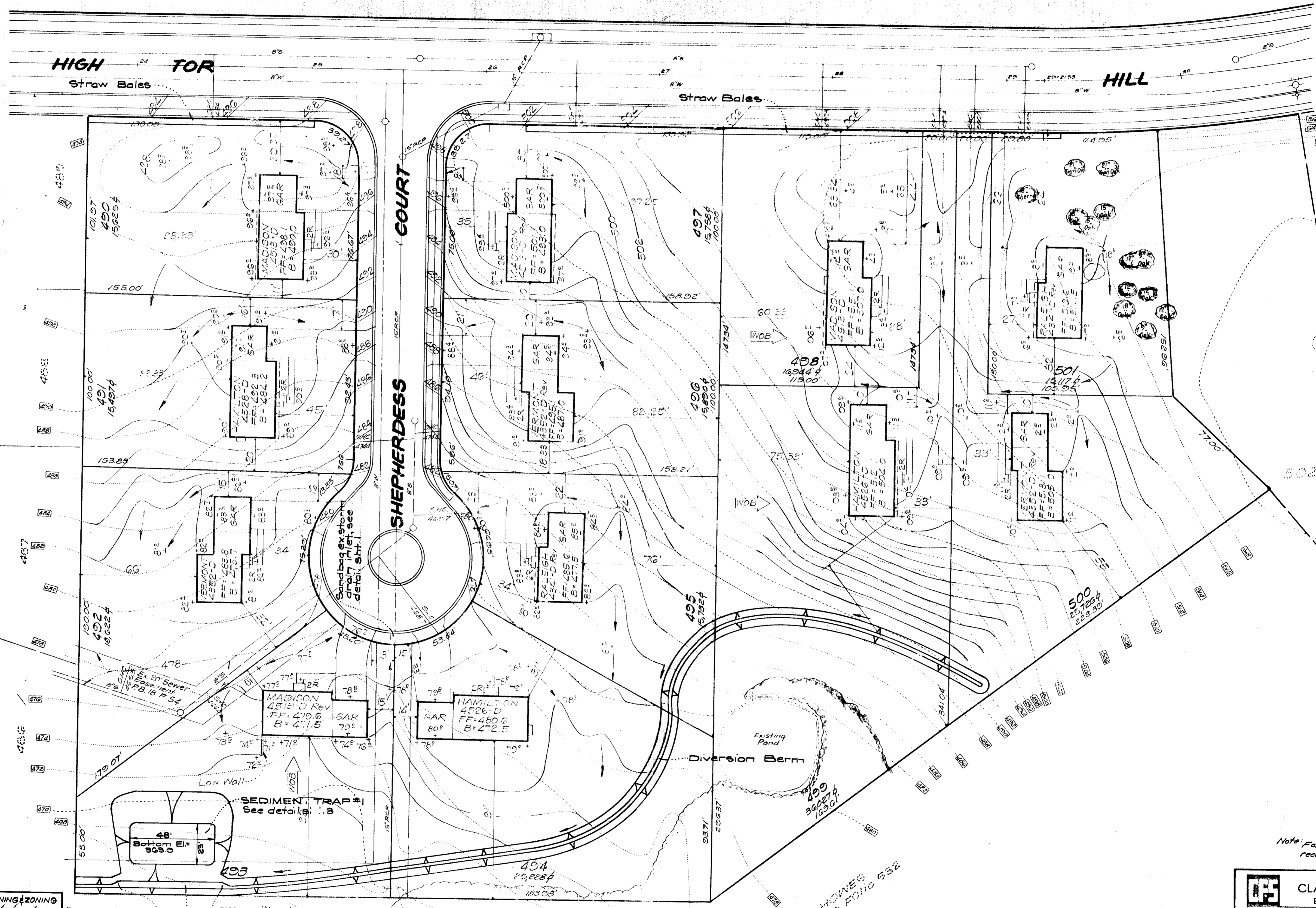
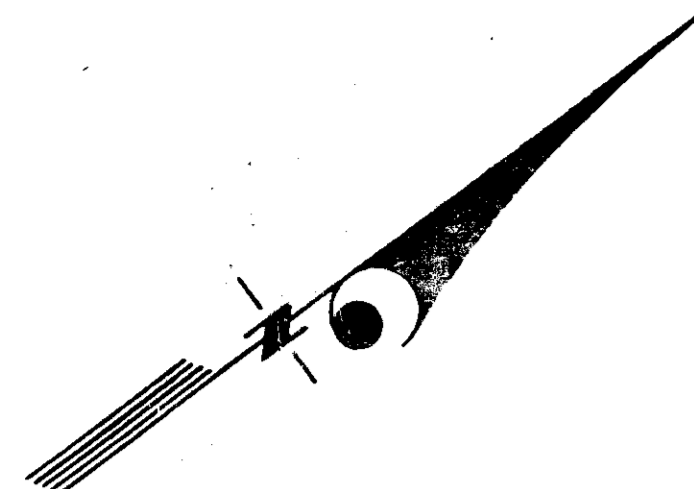
CHIEF DIVISION OF LAND DEVELOPMENT & TRANSPORTATION PLANNING _____ DATE _____

APPROVED FOR PUBLIC WATER AND PUBLIC SEWERAGE STORM DRAINAGE SYSTEMS AND PUBLIC ROADS, HOWARD COUNTY DEPARTMENT OF PUBLIC WORKS

DIRECTOR _____ DATE _____

CHIEF BUREAU OF HIGHWAYS _____ DATE _____

CLARK • FINEFROCK & SACKETT ENGINEERS • PLANNERS • SURVEYORS <small>1115 LOCKWOOD DRIVE SILVER SPRING, MARYLAND 20904 (301) 593 3400</small>		
DESIGNED	DEVELOPMENT PLAN	SCALE
D.B.S.	LOTS 385, 386, 388, 390 & 388 THRU 397	1" = 30'
DRAWN	COLUMBIA	DRAWING
K.W.C.	VILLAGE OF LONGBEACH	4 of 4
CHECKED	SECTION 1 AREA 1	JOB NO.
D.B.S.	6TH ELECTION DISTRICT	74-03G
DATE	HOWARD COUNTY, MARYLAND	FILE NO.
April, 74	FOR: RYLAND HOMES, COLUMBIA DIVISION	1038-X
	Suite 200, 10401 Office Building	
	Columbia, Maryland 21045	



APPROVED HOWARD COUNTY OFFICE OF PLANNING & ZONING
 PLANNING DIRECTOR
 DATE 6/27/74

CHIEF DIVISION OF LAND DEVELOPMENT & TRANSPORTATION PLANNING
 DATE 6/27/74

APPROVED FOR PUBLIC WATER AND PUBLIC SEWERAGE, STORM DRAINAGE SYSTEMS AND PUBLIC ROADS
 HOWARD COUNTY DEPARTMENT OF PUBLIC WORKS
 DIRECTOR
 DATE 6/27/74

CHIEF BUREAU OF HIGHWAYS
 DATE

5' Transition to 2' top width
 5' Transition to 2' top width
 Maintain top elev. of 48.0 throughout 4' top width

SEDIMENT TRAP #1
 Capacity = 20 x 5 x 5 = 0.625
 Storage Required = 20 x 27 x 67 = 4700cf
 Storage Available = 4700cf

PLAN
 Scale: 1" = 30'



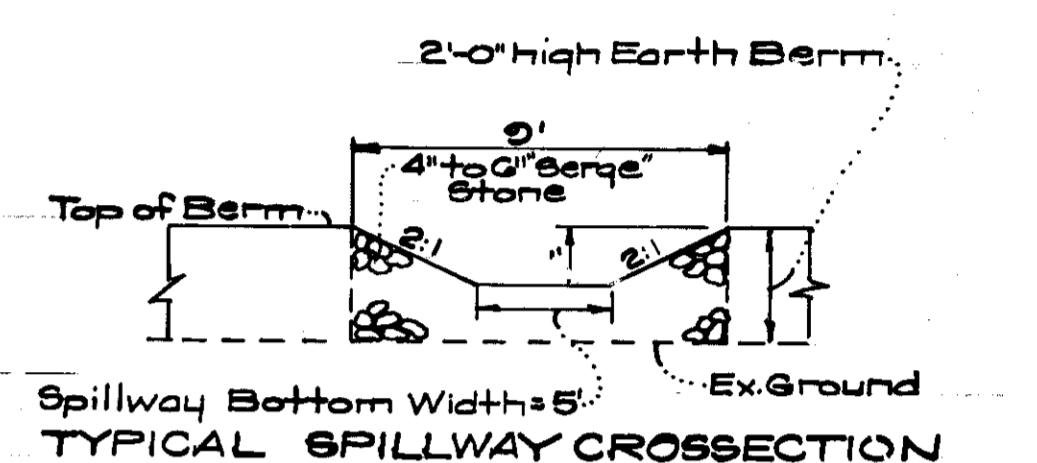
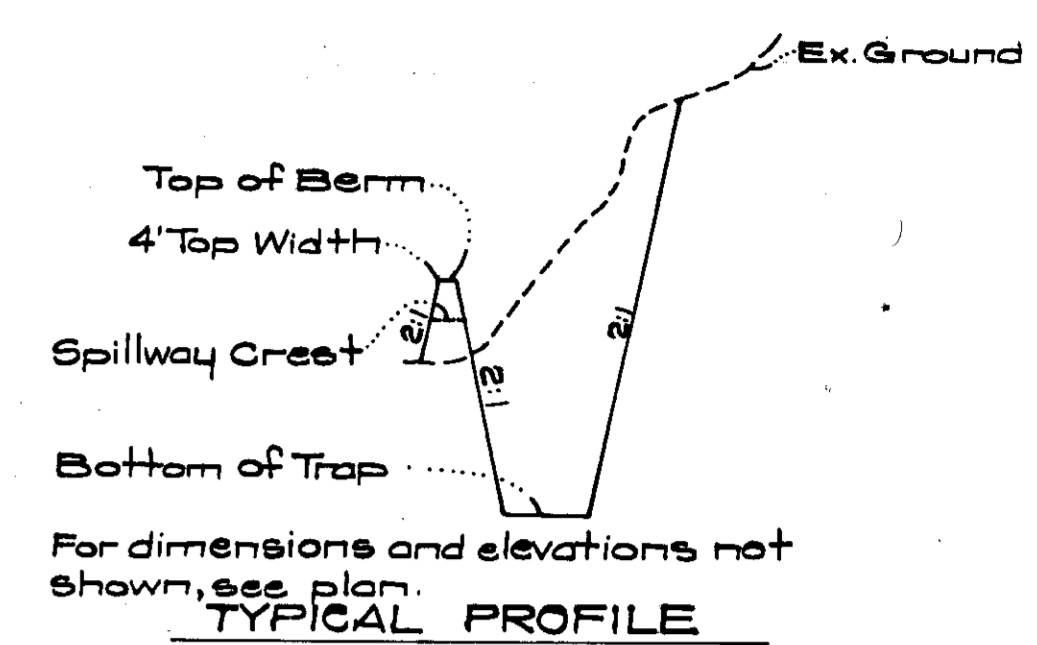
G. N. Jean Clark
 4-9-74

NOTE:
 This plan replaces Clark, Finefrock, & Sackett Dwg. 1115-SE Approved 10-24-73 by Howard County Soil Conservation District.

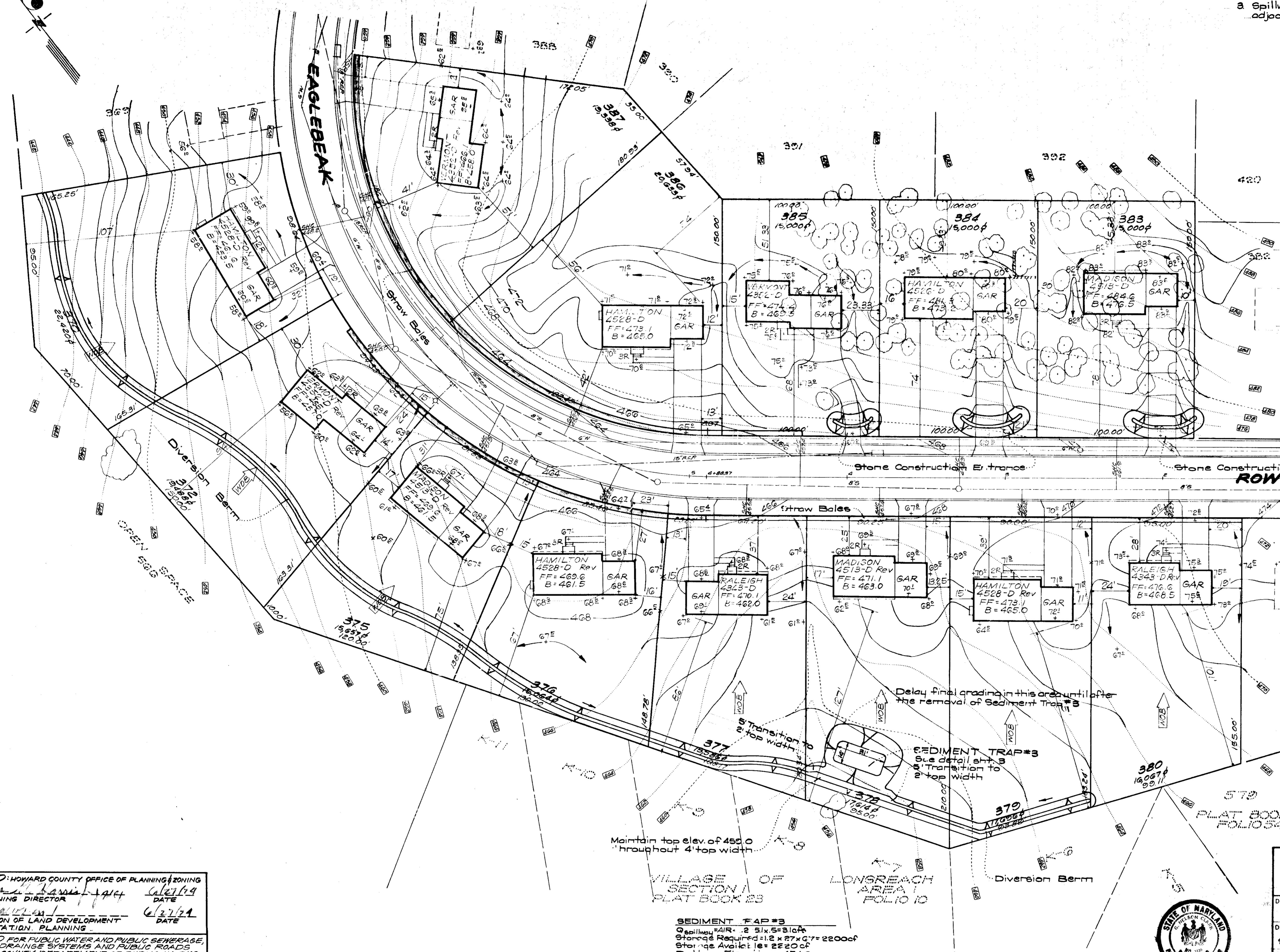
CLARK • FINEFROCK & SACKETT ENGINEERS • PLANNERS • SURVEYORS 1135 LOCKWOOD DRIVE SILVER SPRING, MARYLAND 20904 (301) 593-3400		
DESIGNED R.J.S.	SEDIMENT & EROSION CONTROL PLAN	SCALE
DRAWN Suzan	LOTS 490 THRU 501	As Shown
CHECKED G.N.C.	COLUMBIA	DRAWING
DATE Apr 1974	VILLAGE OF LONGREACH	2084
	SECTION 1, AREA 1	JOB NO.
	6TH ELECTION DISTRICT	
	HOWARD COUNTY, MARYLAND	FILE NO.
	FOR: RYLAND HOMES, COLUMBIA DIVISION	1129 CF
	Suite 200 VOM Office Building	
	Columbia, Maryland 21043	

SEDIMENT TRAP NOTES

1. All Sediment Traps to be cleaned out when sediment reaches a level 3' below top of berm.
2. Bottoms of all Sediment Traps to be level and constructed to the dimensions shown in plan view.
3. Spillways to be constructed through Earth Berms adjacent to excavated portion of Sediment Trap.



SEDIMENT TRAP DETAILS
No Scale



NOTE:
This plan replaces Clark, Fineprock, & Sackett Dwg. 1115-9E Approved 10-24-73 by Howard County Soil Conservation District.

NOTE: For bearings and distances of individual lot lines, see record plat recorded in Plat Book 18, Folio 54

APPROVED: HOWARD COUNTY OFFICE OF PLANNING & ZONING
 PLANNING DIRECTOR
 DATE 6/27/74
 CHIEF DIVISION OF LAND DEVELOPMENT & TRANSPORTATION PLANNING
 DATE 6/27/74
 APPROVED FOR PUBLIC WATER AND PUBLIC SEWERAGE, STORM DRAINAGE SYSTEMS AND PUBLIC ROADS
 HOWARD COUNTY DEPARTMENT OF PUBLIC WORKS
 DIRECTOR
 DATE 6/14/74
 CHIEF BUREAU OF HIGHWAYS

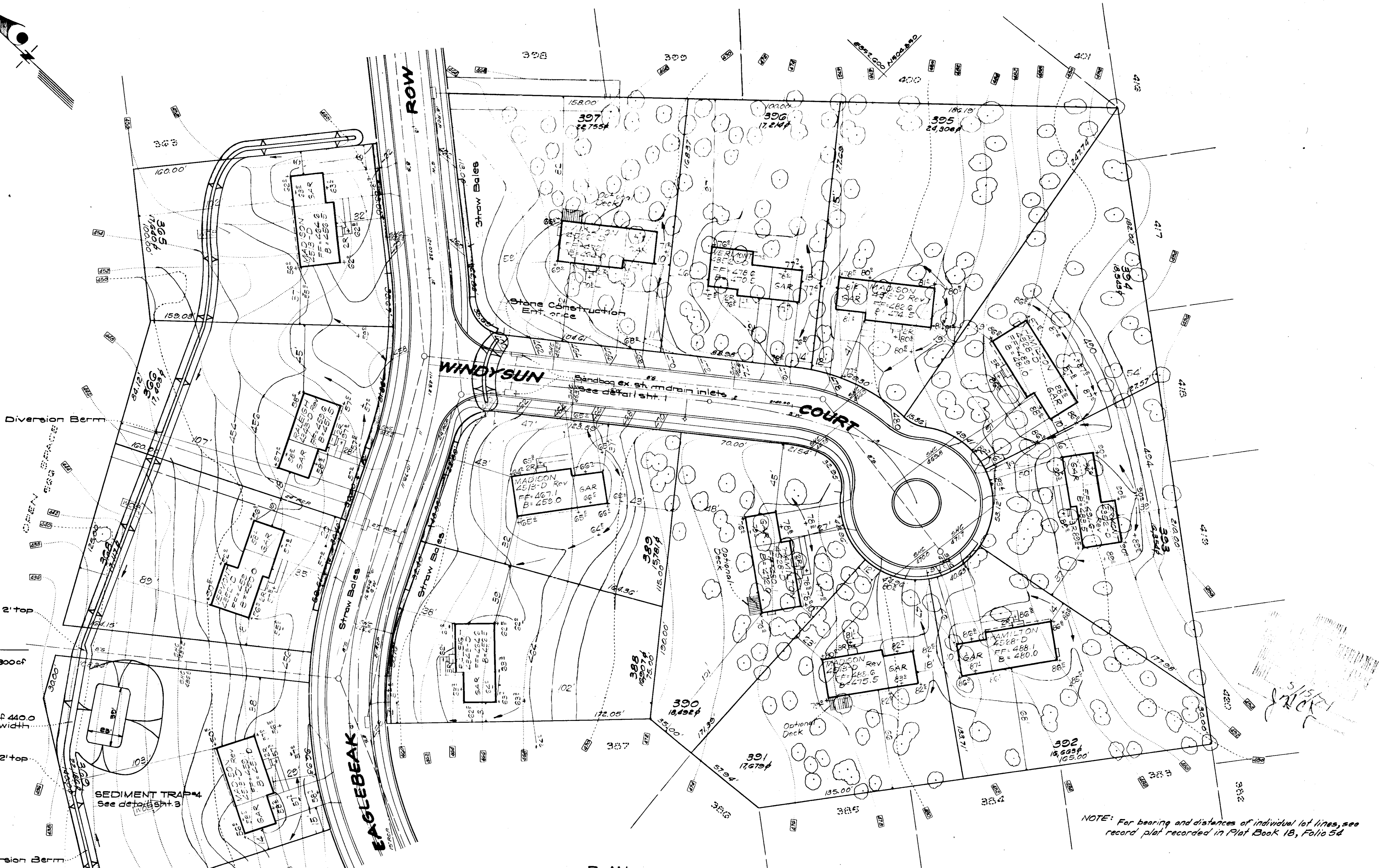
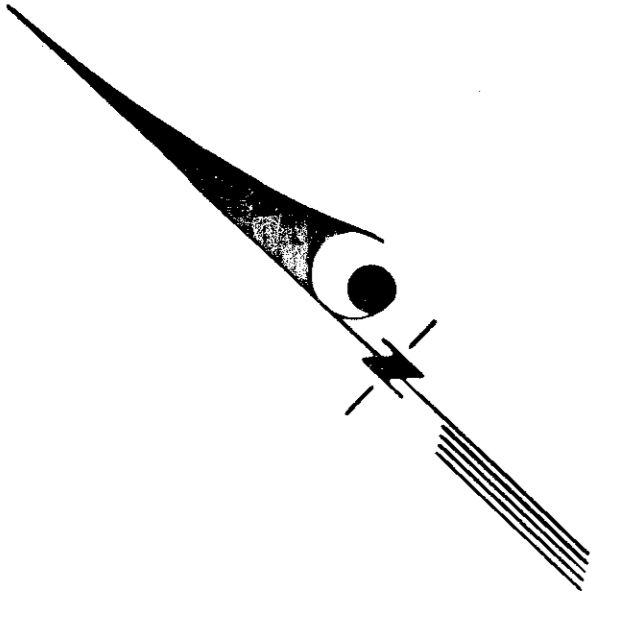
SEDIMENT TRAP #3
 Capacity = 112,500 cu ft
 Storage Required = 1.2 x 27 x 67 = 2220 cu ft
 Storage Available = 2220 cu ft
 Bottom Elevation = 454.0

PLAN
Scale: 1" = 50'



W. N. Clark
4-9-74

CLARK • FINEPROCK & SACKETT ENGINEERS • PLANNERS • SURVEYORS		11115 LOCKWOOD DRIVE SILVER SPRING, MARYLAND 20904 (301) 593-3400
DESIGNED	R.J.S.	SCALE
DRAWN	Suzon	As Shown
CHECKED	G.N.C.	DRAWING
DATE	Apr 10/74	3024
		JOB NO.
		FILE NO.
		1120-5E



SEDIMENT TRAP #4
 Capacity = 21 x 51 x 5 = 54cfs
 Storage Required = 2.1 x 27 x 7 = 380cfs
 Storage Available = 3015cfs
 Bottom Elevation = 435.0

Maintain top elev. of 440.0 throughout 4' top width

5' Transition to 2' top width

SEDIMENT TRAP #4
 See detail sheet 3

PLAN
 Scale: 1" = 30'

NOTE: For bearing and distances of individual lot lines, see record plat recorded in Plat Book 18, Folio 5d

APPROVED: HOWARD COUNTY OFFICE OF PLANNING & ZONING
 J. Thomas Williams, Jr. PLANNING DIRECTOR DATE 6/27/74
 M. J. ... CHIEF DIVISION OF LAND DEVELOPMENT & TRANSPORTATION PLANNING DATE 6/27/74
 APPROVED FOR PUBLIC WATER AND PUBLIC SEWERAGE STORM DRAINAGE SYSTEMS AND PUBLIC ROADS
 HOWARD COUNTY DEPARTMENT OF PUBLIC WORKS
 ... DIRECTOR DATE 6/27/74
 ... CHIEF BUREAU OF HIGHWAYS DATE



W. A. Clark
 7-9-74

NOTE: This plan replaces Clark, Finebrock & Sackett drawing # 10-24-73 by Howard County Soil Conservation District.

CLARK • FINEBROCK & SACKETT ENGINEERS • PLANNERS • SURVEYORS 11315 LOCKWOOD DRIVE SILVER SPRING, MARYLAND 20904 (301) 593-3400		SCALE
		SEDIMENT & EROSION CONTROL PLAN LOTS 365, 366, 368, 369 & 388 THRU 397 COLUMBIA VILLAGE OF LONGREACH SECTION 1 AREA 1 6TH ELECTION DISTRICT HOWARD COUNTY, MARYLAND FOR: RYLAND HOMES, COLUMBIA DIVISION Suite 200 V.O.M. Office Building Columbia, Maryland 21045
DESIGNED R.J.S.	FILE NO. 1129-SE	DRAWN SUZAN CHECKED G.N.C. DATE Apr. 1974
CHECKED G.N.C. DATE Apr. 1974		JOB NO. 4244
DRAWN SUZAN CHECKED G.N.C. DATE Apr. 1974		FILE NO. 1129-SE
CHECKED G.N.C. DATE Apr. 1974		JOB NO. 4244