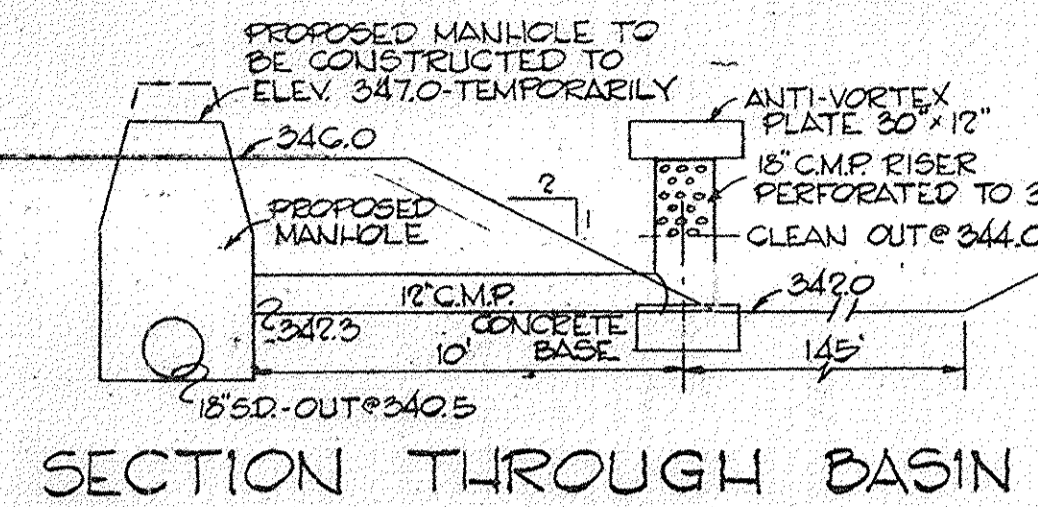
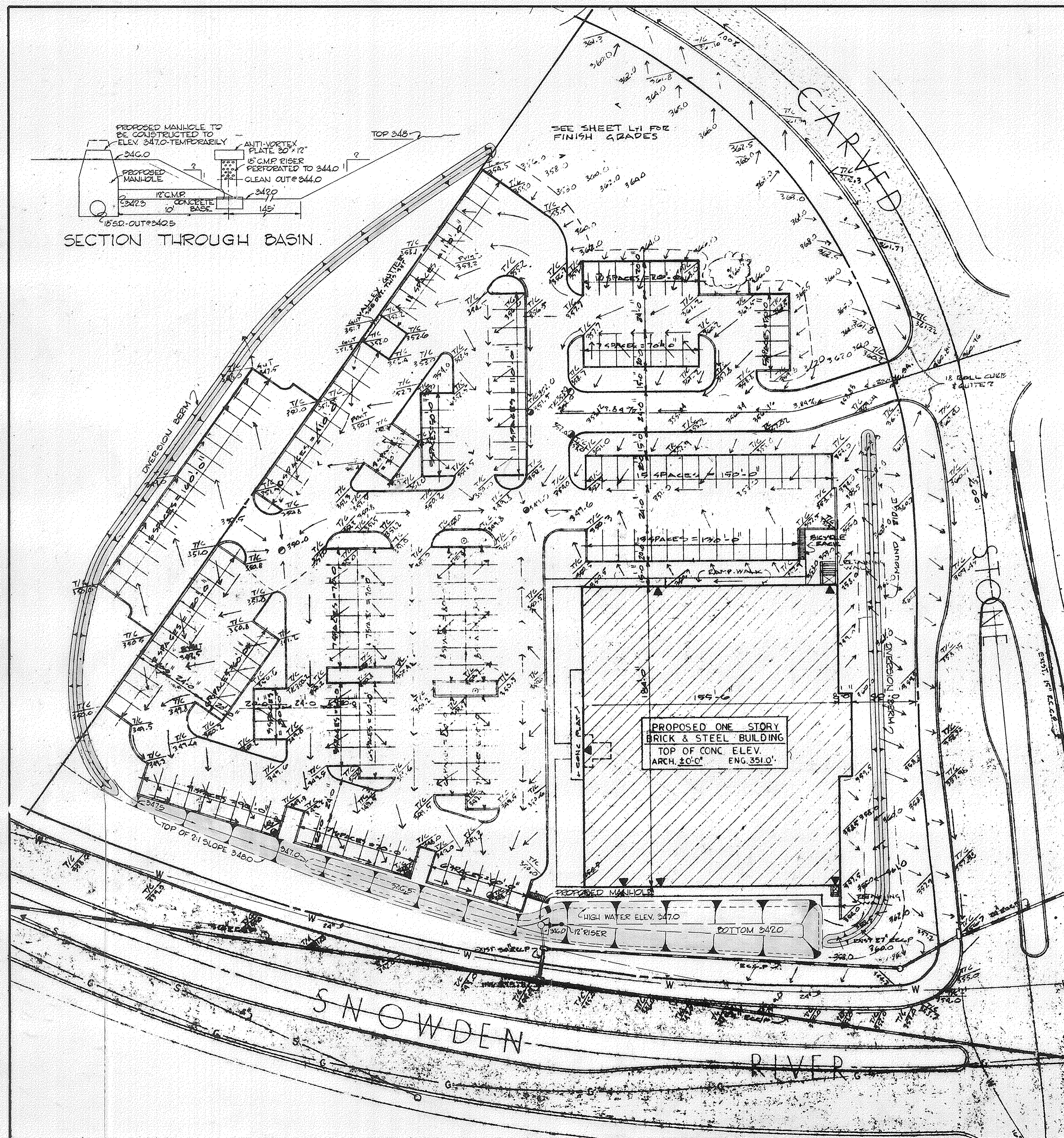


SEDIMENT CONTROL NOTES

- BEFORE ANY GRADING ON THIS SITE, MANHOLE, BARREL, RISER, EXCAVATED STORAGE AREA AND DIVERSION BERMS WILL BE CONSTRUCTED AND STABILIZED ACCORDING TO THIS PLAN.
- DISTURBED AREAS TO BE MAINTAINED IN A ROUGH GRADED CONDITION UNTIL PROPER WEATHER CONDITIONS EXIST FOR THE ESTABLISHMENT OF PERMANENT VEGETATIVE COVER.
- VEGETATIVE STABILIZATION OF SEDIMENTATION CONTROL DEVICES SHALL BE ACCOMPLISHED AS FOLLOWS:
 - APPLY GROUND LIMESTONE AT ONE TON PER ACRE.
 - APPLY 10-20-10 FERTILIZER AT 600 LBS. PER ACRE.
 - WORK BOTH INTO SOIL AND PREPARE SEEDING AREA WITH A YORK RAKE.
 - SEED AREAS WITH ITALIAN RYEGRASS AT 40 LBS. PER ACRE.
 - MULCH WITH UNWEATHERED SMALL GRAIN STRAW AT 1 1/2 - 2 TONS PER ACRE. MULCH WILL BE TIED DOWN WITH ASPHALT.
- FINAL STABILIZATION WITH VEGETATIVE COVER WILL TAKE PLACE AS EARLY IN THE SPRING AS WEATHER CONDITIONS PERMIT. IT WILL BE DONE AS FOLLOWS:
 - APPLY GROUND LIMESTONE AT 2 TONS PER ACRE.
 - APPLY 10-10-10 FERTILIZER AT 1000 LBS. PER ACRE.
 - WORK BOTH INTO SOIL AND PREPARE TO BE SEEDING WITH A YORK RAKE.
 - SEEDING -
 - SEED AREAS FLATTER THAN 3:1 SLOPES WITH COMMON KENTUCKY BLUEGRASS AT 40 LBS. PER ACRE, CERTIFIED MERION KENTUCKY BLUEGRASS, PENNLAWN RED FESCUE AT 20 LBS. PER ACRE.
 - MULCHING -
 - UNWEATHERED SMALL GRAIN STRAW WILL BE APPLIED AT 1 1/2 - 2 TONS PER ACRE. MULCH WILL BE TIED DOWN WITH ASPHALT.
- ALL SEDIMENT CONTROL STRUCTURES ARE TO REMAIN IN PLACE AND MAINTAINED IN EFFECTIVE CONDITION UNTIL PERMISSION FOR THEIR REMOVAL HAS BEEN OBTAINED FROM THE HOWARD SOIL CONSERVATION DISTRICT (465-3180 OR 465-500 EXT. 320)
- A MINIMUM 24 HOUR NOTICE MUST BE GIVEN TO THE HOWARD CONSERVATION DISTRICT (465-3180) PRIOR TO THE START OF ANY WORK.
- SEDIMENT BASIN WILL BE CLEANED OUT WHEN SILT REACHES A DEPTH EQUAL TO 2 FEET BELOW TOP OF RISER.
- ALL SWALES SHALL BE SODDED AND TAMPED AND ALL SLOPES SHALL BE SEED OR SODDED IN CONJUNCTION WITH HOWARD SOIL CONSERVATION CONTROL IN URBANIZING AREAS. FOR SODDED AREAS, TREATMENT WILL CONSIST OF ITEMS A, B AND C IN NOTE 4 PRIOR TO LAYING AND PEGGING THE SOD.
- NO SLOPES SHALL BE GREATER THAN 3:1.



SECTION THROUGH BASIN



APPROVED: FOR PUBLIC WATER AND PUBLIC SEWERAGE SYSTEMS, HOWARD COUNTY HEALTH DEPT.
 COUNTY HEALTH OFFICER: *[Signature]* DATE: 6/13/74

APPROVED: HOWARD COUNTY OFFICE OF PLANNING AND ZONING
 PLANNING DIRECTOR: *[Signature]* DATE: 6-13-74
 CHIEF, DIV. OF LAND DEVELOPMENT AND TRANSPORTATION PLANNING: *[Signature]* DATE: 6/13/74

ENGINEER'S CERTIFICATE
 I certify that this plan for Erosion and Sediment Control represents a practical and workable plan based on my personal knowledge of the site conditions and that it was prepared in accordance with the requirements of the Howard Soil Conservation District.
 Signature of Engineer: *[Signature]*, P.E. DATE: 2-20-74

DEVELOPER CERTIFICATE
 I hereby certify that all development and/or construction will be done according to this plan of development and plan for Erosion and Sediment Control, and I also authorize periodic on-site inspection by the Howard Soil Conservation District or their authorized agents, as are deemed necessary.
 Deviation from this plan will not be made unless authorized by the Howard Soil Conservation District.
 Signature of Developer: *[Signature]* DATE: 2/10/74

NOTE:
 COPIES OF THIS PLAN WERE APPROVED AND SIGNED BY AUTHORIZED AGENTS OF THE HOWARD SOIL CONSERVATION DISTRICT ON FEB. 22, 1974, AND NUMBERED: GP-74-43.

Reviewed for Howard S.C.D. and meets Technical Requirements
 Name: *[Signature]* DATE: 6-13-74
 Signature: *[Signature]* DATE: 6-13-74
 U.S. Soil Conservation Service
 This Development Plan is approved for Soil Erosion and Sediment Control by the Howard Soil Conservation District.
 Approved: *[Signature]* DATE: 6-13-74
 Howard S.C.D.

APPROVED: FOR PUBLIC WATER, PUBLIC SEWER AND STORM DRAINAGE SYSTEMS AND ROADS, HOWARD COUNTY DEPT. OF PUBLIC WORKS
 CHIEF BUREAU OF HIGHWAYS: *[Signature]* DATE: 6/13/74
 DIRECTOR: *[Signature]* DATE: 6/13/74

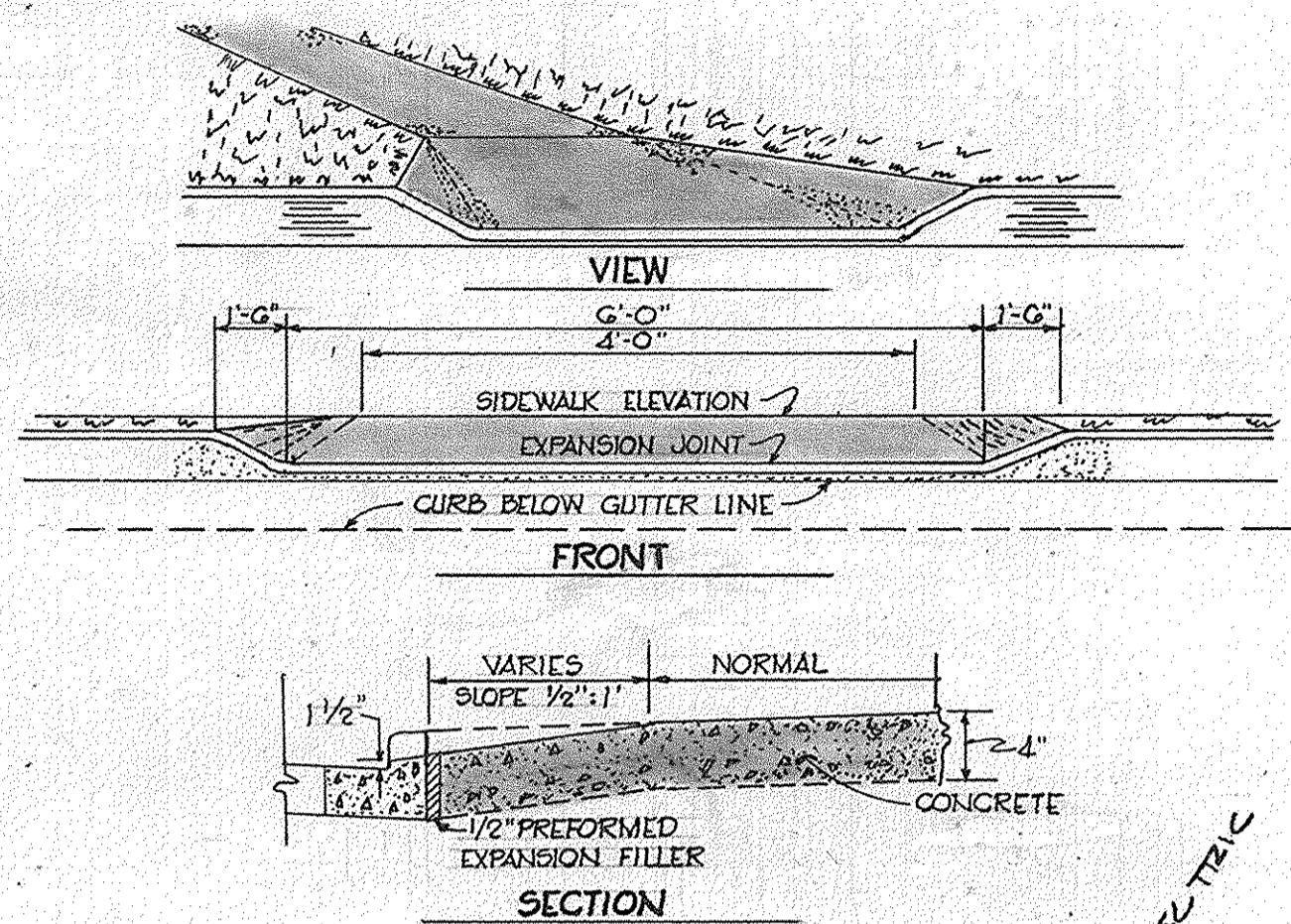
APPROVED PLANNING BOARD OF HOWARD COUNTY
 DATE: MAY 29 1974
 Signature: *[Signature]*
 GREEN ASSOCIATES, INCORPORATED
 CONSULTING ENGINEERS
 TOWSON, MARYLAND

COLUMBIA
 MARYLAND
 6TH ELECTION DISTRICT HOWARD COUNTY

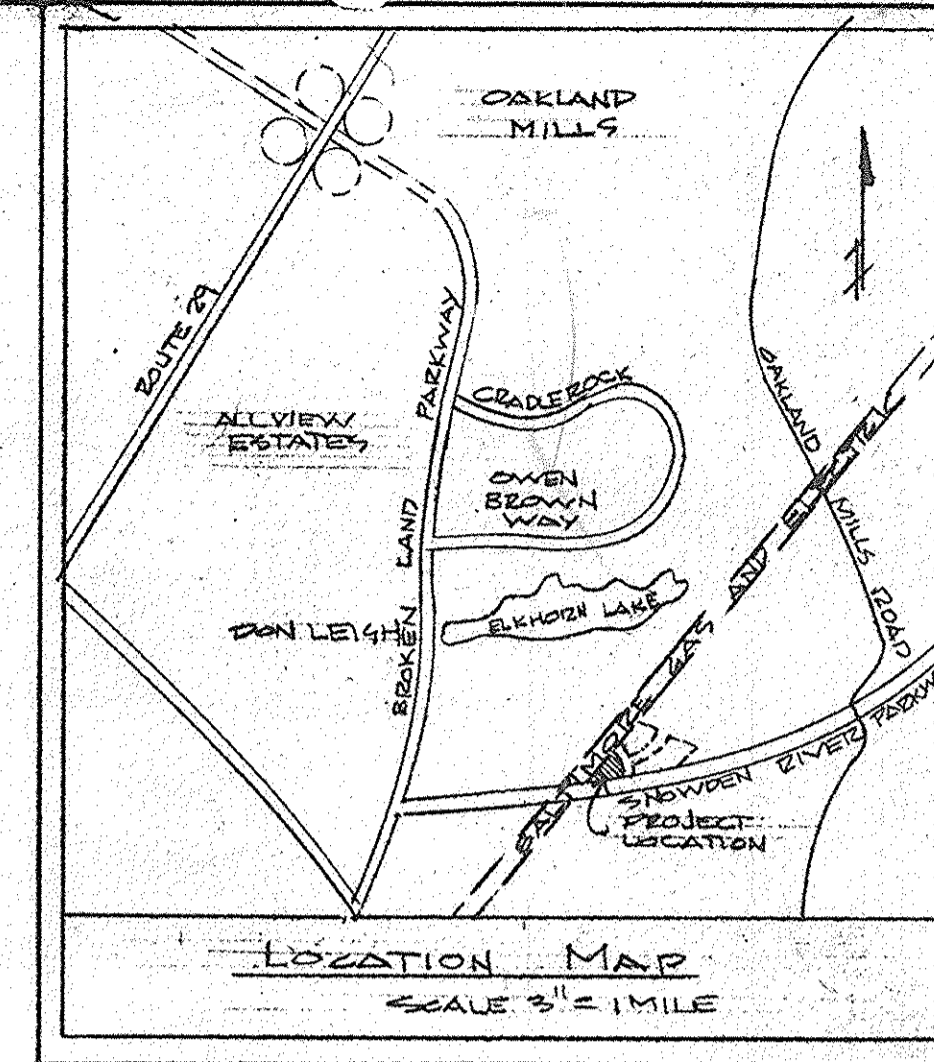
PROJECT AREA: VILLAGE OF OWEN BROWN, SECTION 2 AREA 2 - PARCEL 'B'
 PROJECT TITLE: SOIL EROSION CONTROL PLAN

Des. By: F.T. Scale: 1"=30' Dwg. No. 10F1
 Dn. By: F.T. Date: FEB. 23, 1974 C.C.F. No.
 Chk. By: J.T.J. Approved

SDP74-97c



CURB DROP DETAIL



SITE ANALYSIS

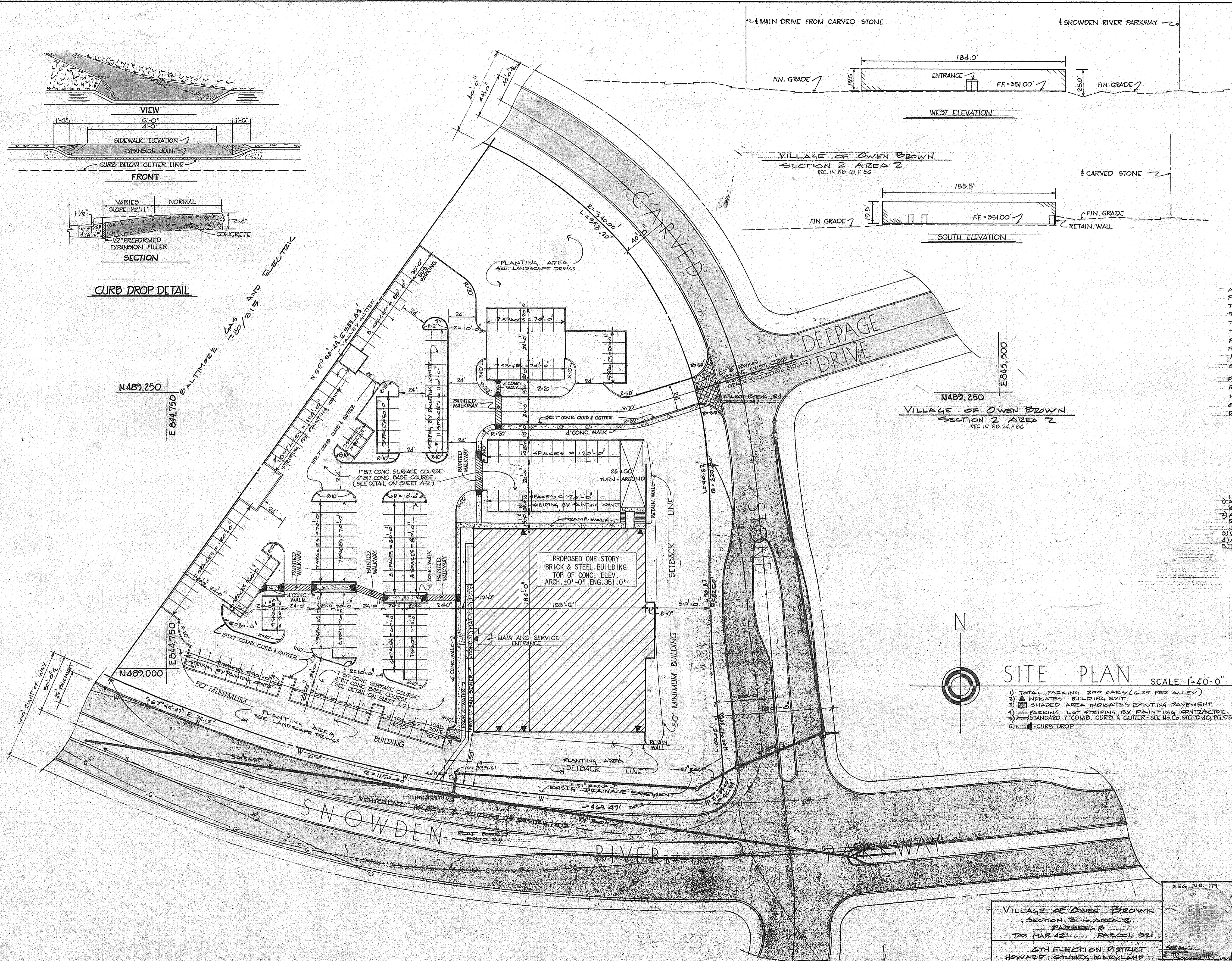
AREA OF PARCEL = 4.614 AC.
 PRESENT ZONING - NEW TOWN EMPLOYMENT COMMERCIAL
 TOTAL NUMBER OF EMPLOYEES - 8
 TOTAL FLOOR SPACE EACH LEVEL - 29,012
 TOTAL FLOOR SPACE OF ANY SALES AREA - N/A

PARCEL B 14 RECORDED IN PLAT BOOK 24
 PAGE 86 AMONG THE LAND RECORDS OF
 HOWARD COUNTY AS PART OF THE VILLAGE
 OF OWEN BROWN SECTION 2 AREA 2

PARCEL B 15 RECORDED IN PLAT BOOK 20
 PAGE 198 AMONG THE LAND RECORDS OF
 HOWARD COUNTY AS PART OF THE VILLAGE
 OF OWEN BROWN SECTION 2 AREA 2 FINAL
 DEVELOPMENT PLAN PHASE 118 PART II

GENERAL NOTES

- 1) ALL SITE INFORMATION TAKEN FROM TOPOGRAPHICAL SURVEY BY M.E. HUCKINS & ASSOCIATES, COLUMBIA, MD.
- 2) ALL STREETS TAKEN FROM PERKINS BY WHITMAN, REQUARDT & ASSOCIATES (LANSINGERS) BALTIMORE, MD. JOB NO. WA 100612.
- 3) VERIFY ALL UTILITY LINES WITH UTILITY CO.
- 4) ALL DRIVEWAYS WITHIN PARCEL B ARE PRIVATE.
- 5) FOR RETAINING WALL DETAILS SEE ARCHITECTS BLDG. PLANS



SITE PLAN SCALE 1" = 40'-0"

- 1) TOTAL PARKING 200 CARS (6.69 PER ALLEY)
- 2) ▲ INDICATES BUILDING EXIT
- 3) ■ SHADED AREA INDICATES EXISTING PAVEMENT
- 4) ▨ PARKING LOT STIPPLING BY PAINTING CONTRACTOR
- 5) ▨ STANDARD T-COMB. CURB & GUTTER - SEE HO. CO. STD. D-40, PG. 95
- 6) ▨ CURB DROP

APPROVED
 PLANNING BOARD
 OF HOWARD COUNTY

DATE MAY 29, 1974
 Thomas L. Harris, Jr.

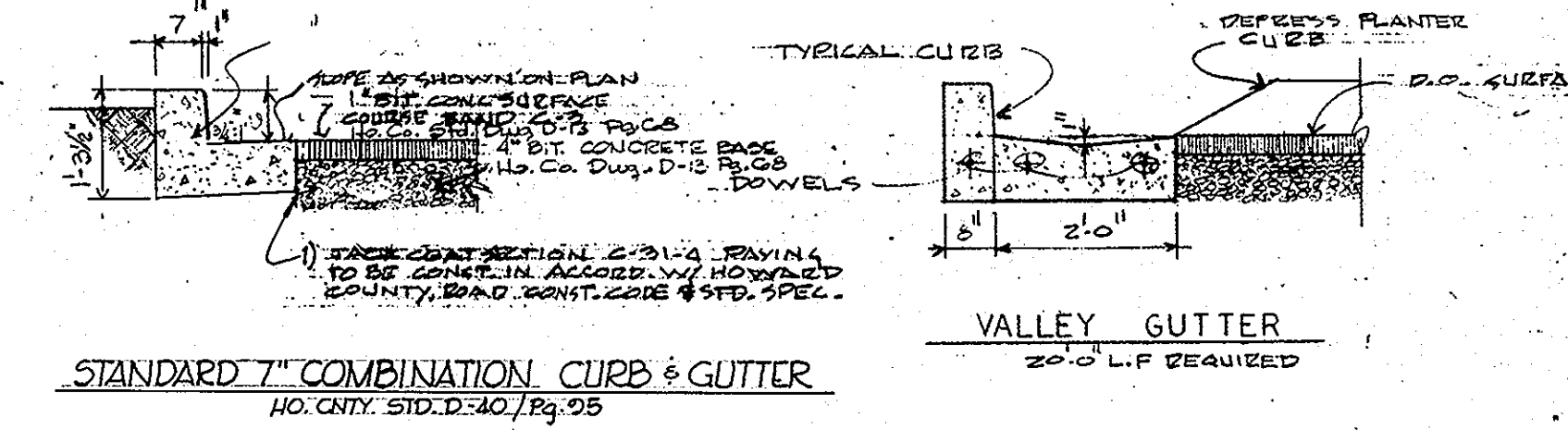
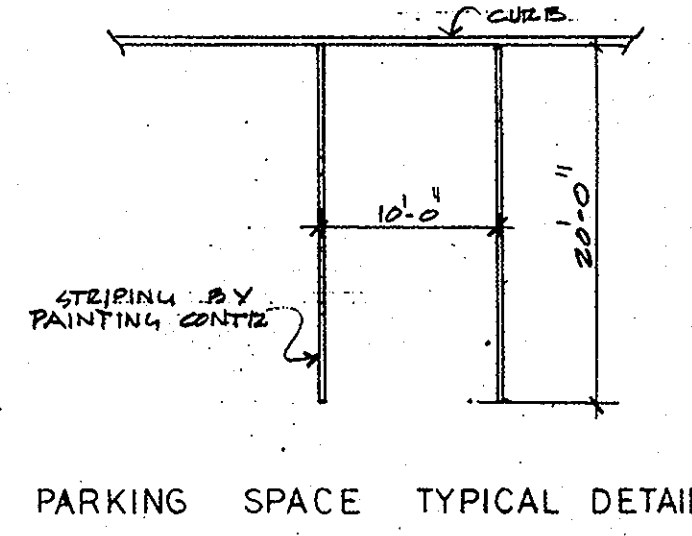
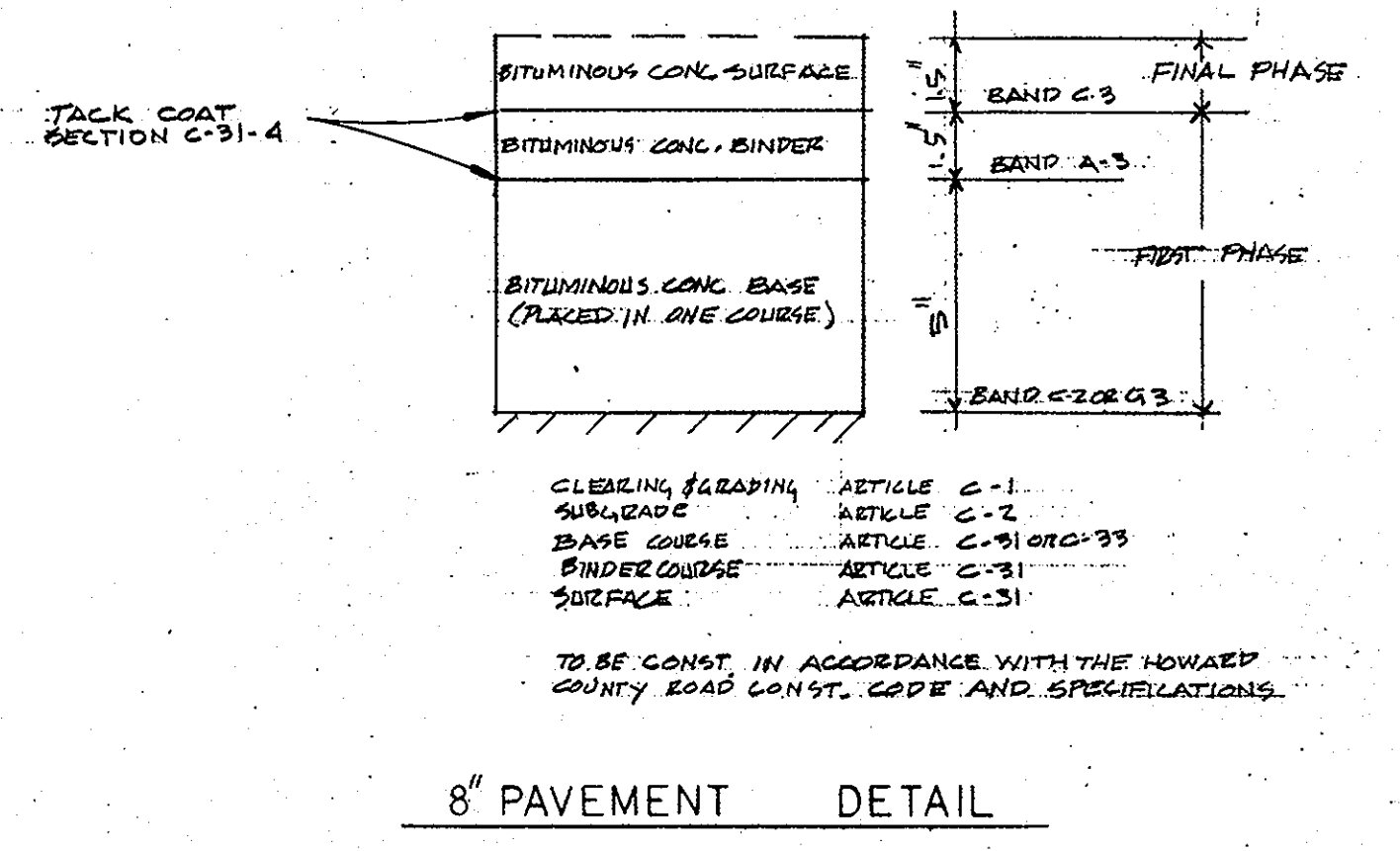
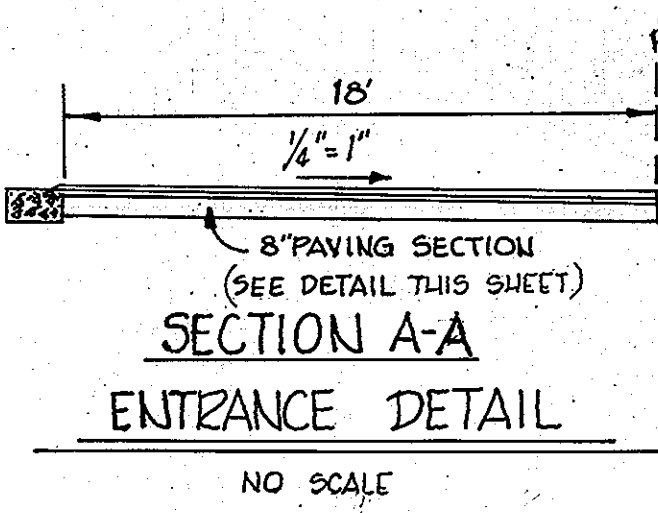
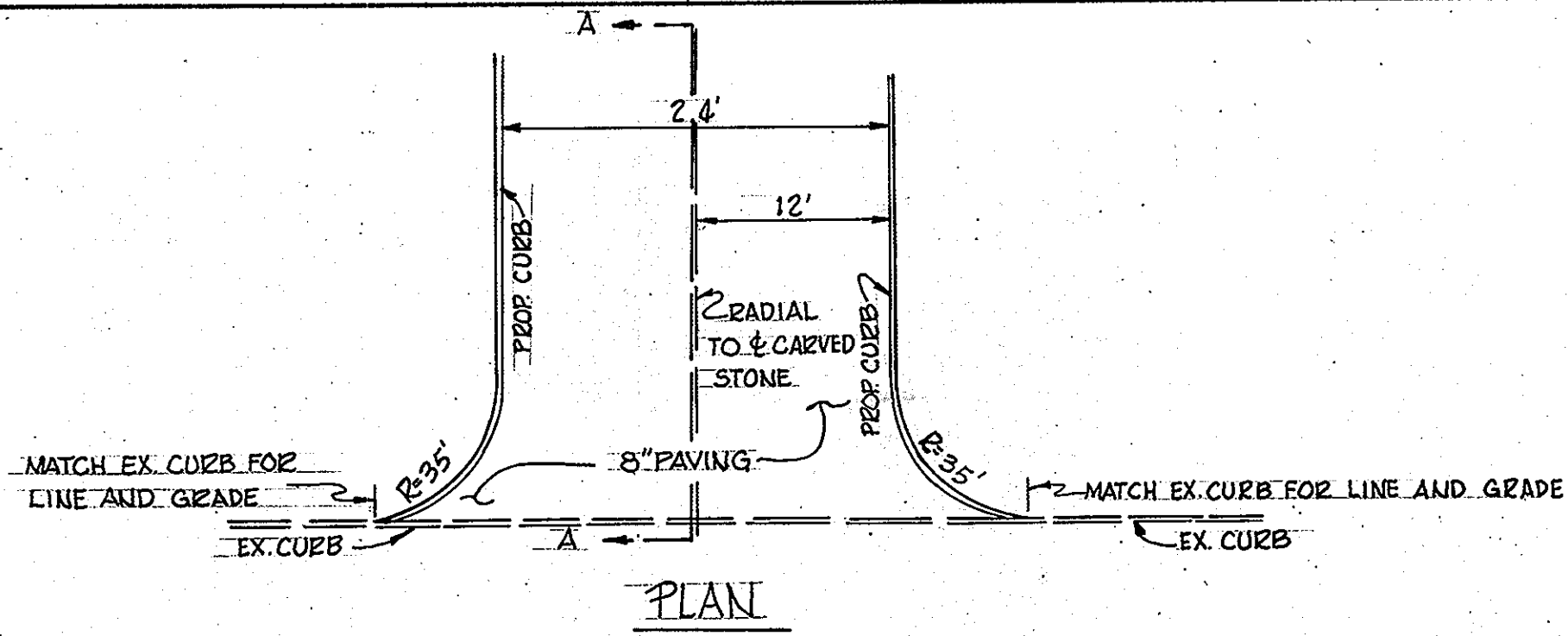
APPROVED: FOR PUBLIC WATER AND PUBLIC SEWER SYSTEMS	DATE
HOWARD COUNTY HEALTH DEPT.	6/11/74
APPROVED: COUNTY HEALTH OFFICER	DATE
HOWARD COUNTY OFFICE OF PLANNING AND ZONING	6-13-74
THOMAS L. HARRIS, JR., PLANNING DIRECTOR	DATE
CHIEF DIVISION OF LAND DEVELOPMENT & TRANSPORTATION PLANNING	DATE
APPROVED: FOR PUBLIC WATER, PUBLIC SEWER, AND STORM DRAINAGE SYSTEMS AND BOARDS	DATE
HOWARD COUNTY DEPARTMENT OF PUBLIC WORKS	6/11/74
DIRECTOR: D. H. HARRIS	DATE
CHIEF, BUREAU OF HIGHWAYS	DATE

VILLAGE OF OWEN BROWN SECTION 2 AREA 2
 PARCELS B
 TAX MAP 42 PARCEL 321
 6TH ELECTION DISTRICT
 HOWARD COUNTY, MARYLAND

REG. NO. 179

DUANE E. LINDELL ARCHITECT & ASSOCIATES
 ARCHITECTS AND LAND PLANNERS
 2008 EAST 17TH STREET
 LANSING, MICHIGAN 48906

7357
 DATE 6/11/74
 DRAWN BY
 CHECKED BY
 PROJECT NO. A-1
 SHEET NO. SDP 74-097a

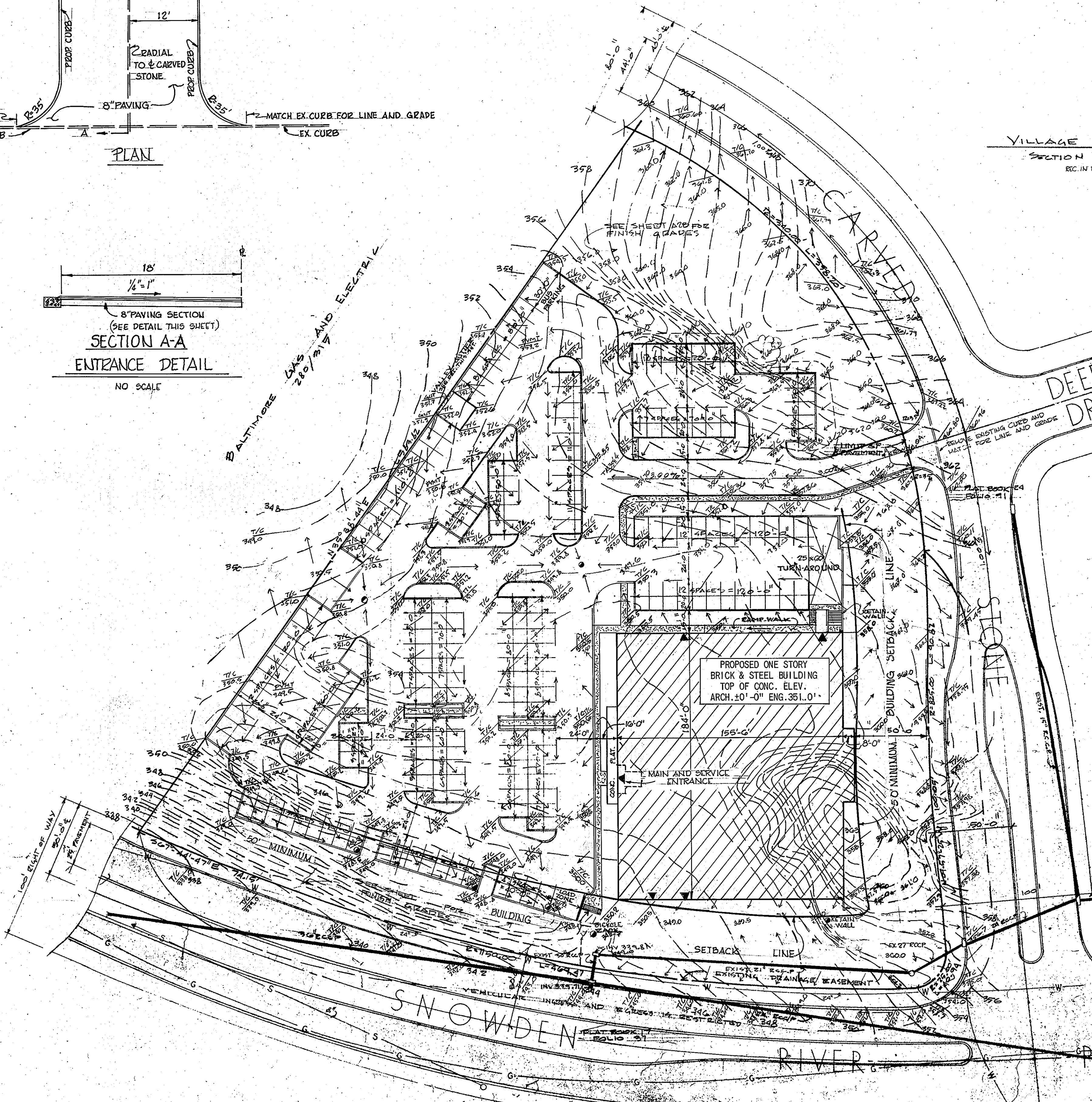


VILLAGE OF OWEN BROWN
SECTION 2 AREA 2
REC. IN P.B. 24, F. 66

VILLAGE OF OWEN BROWN
SECTION 2 AREA 2
REC. IN P.B. 24, F. 66

- LEGEND**
- 340.0 PERFORMED TOP OF CURB GRADE, SUBTRACT 0.6 (6) FOR PAVEMENT GRADE
 - 342.0 SPOT ELEVATION
 - DIRECTION OF FLOW
 - DRAINAGE STRUCTURE
 - - - - - RIDE LINE

N
GRADING PLAN SCALE: 1" = 40'-0"
1) TOTAL PARKING 200 CARS (625 PER ALLEY)
2) ▲ INDICATES BUILDING EXIT
3) ▨ SHADED AREA INDICATES EXISTING PAVEMENT

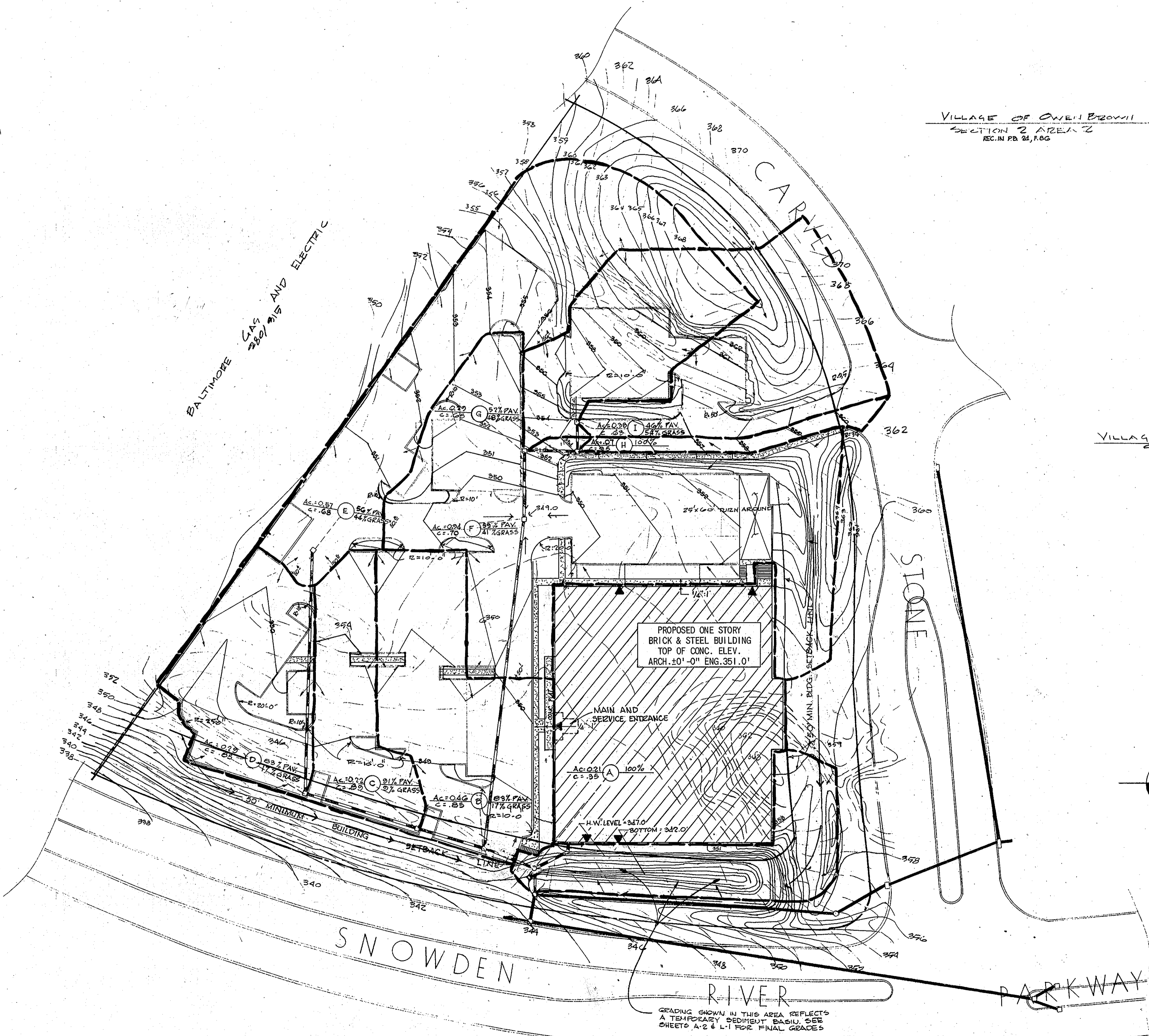


APPROVED
PLANNING BOARD
OF HOWARD COUNTY
DATE: MAY 29 1974

APPROVED: FOR PUBLIC WATER AND PUBLIC SEWERAGE SYSTEM: HOWARD COUNTY HEALTH DEPARTMENT
J. P. ... 6/11/74
COUNTY HEAD OFFICER DATE
APPROVED: HOWARD COUNTY OFFICE OF PLANNING AND ZONING
James D. Heming 6-13-74
PLANNING DIRECTOR DATE
J. H. ... 6/13/74
CHIEF DIVISION OF LAND DEVELOPMENT AND TRANSPORTATION PLANNING DATE
APPROVED: FOR PUBLIC WATER PUBLIC SEWERAGE WATER STORM DRAINAGE SYSTEMS AND ROAD
HOWARD COUNTY DEPARTMENT OF PUBLIC WORKS
Will ... 6/13/74
CHIEF BUREAU OF HIGHWAYS DATE

VILLAGE OF OWEN BROWN
SECTION 2 AREA 2
PARCEL 2B
TAX MAP 42 PARCEL 321
6th ELECTION DISTRICT
HOWARD COUNTY, MARYLAND

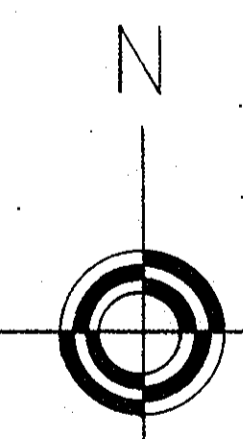
DUANE E. LINDEN ARCHITECT & ASSOCIATES
ARCHITECTS AND LAND PLANNERS
1008 EAST 12TH STREET LINCOLN, ILLINOIS 62601
PLANNING NO. 7357
DATE: 6/11/74
DRAWN BY: J. P. ...
CHECKED BY: J. P. ...
DATE: 6/11/74
SCALE: 1" = 40'-0"
A-2



VILLAGE OF OWEN BROWN
SECTION 2 AREA 2
REC. IN PB. 24, F.B.C.

VILLAGE OF OWEN BROWN
SECTION 2 AREA 2
REC. IN PB. 24, F.B.C.

DRAINAGE AREA MAP &
CONTOUR GRADING PLAN



SCALE: 1" = 40'

- 1) EXISTING CONTOURS
- 2) PROPOSED CONTOURS
- 3) SEE SHT A-2 FOR DRAINAGE AREAS
- 4) SEE SHT A-3A FOR ALL MANHOLE ELEVATIONS
- 5) SEE SHT A-3 FOR STORM DRAINAGE DETAILS
- 6) EXISTING STORM DRAINS
- 7) PROPOSED STORM DRAINS

APPROVED
PLANNING BOARD
OF HOWARD COUNTY

DATE: MAY 29 1974

James L. Henrich
DIRECTOR

APPROVED FOR PUBLIC WATER & PUBLIC SEWER SYSTEMS
HOWARD COUNTY HEALTH DEPT.

John J. Wozniak 6/1/74
COUNTY HEALTH OFFICER DATE

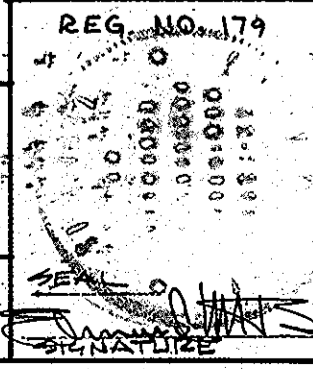
APPROVED: HOWARD COUNTY OFFICE OF PLANNING AND ZONING
James L. Henrich 6/13/74
DIRECTOR DATE

APPROVED FOR PUBLIC WATER, PUBLIC SEWER AND STORM DRAINAGE SYSTEMS AND ROAD
HOWARD COUNTY DEPT. OF PUBLIC WORKS
William J. O'Brien 6/1/74
DIRECTOR DATE

John W. Wickland 6/1/74
CHIEF BUREAU OF HIGHWAYS DATE

GRADING SHOWN IN THIS AREA REFLECTS A TEMPORARY SEDIMENT BASIN. SEE SHEETS A-2 & L-1 FOR FINAL GRACES

VILLAGE OF OWEN BROWN
SECTION 2 AREA 2
TAX MAP 42 PARCEL B PARCEL 321
6TH ELECTION DISTRICT
HOWARD COUNTY, MARYLAND

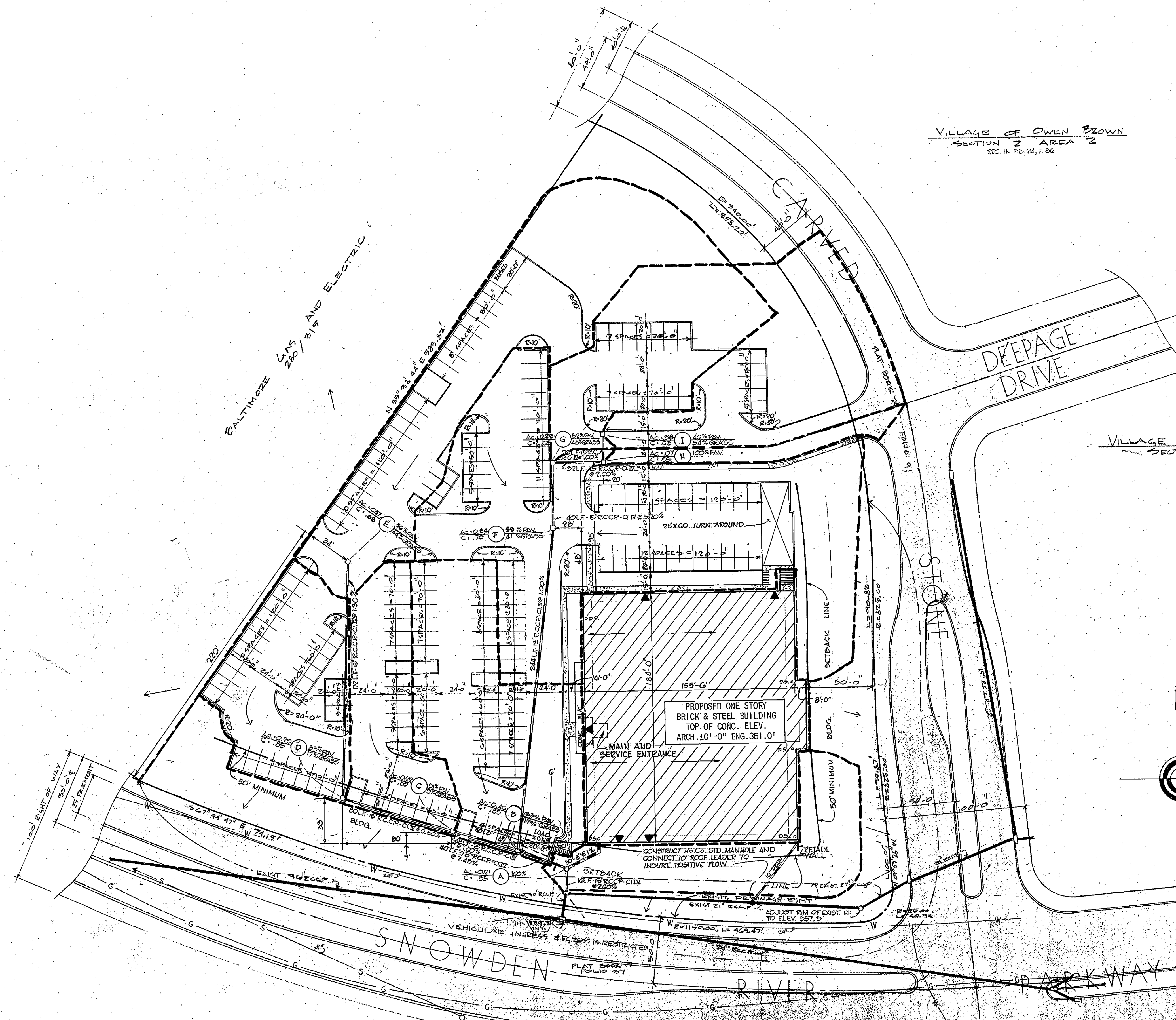


DUANE E. LINDEN ARCHITECT & ASSOCIATES
ARCHITECTS AND LAND PLANNERS
2225 EAST 17TH STREET
LANSING, ILLINOIS 61400 414 8700

PLAN NO. 7357
DATE: MARCH 15, 1974
DRAWN BY: D.M.K.
CHECKED BY:
SHEET: A-2 B

VILLAGE OF OWEN BROWN
SECTION 2 AREA 2
REC. IN PD. 24, F. 66

VILLAGE OF OWEN BROWN
SECTION 2 AREA 2
REC. IN PD. 24, F. 66

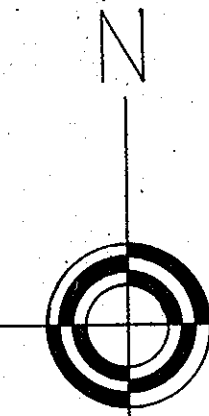


SPECIFICATIONS

- 1) ALL STORM SEWER PIPE SHALL BE REINFORCED CONCRETE SEWER PIPE CLASS III OR AS NOTED
- 2) ALL STORM DRAINAGE STRUCTURES SHALL BE CONSTRUCTED IN ACCORDANCE WITH H.C. STANDARDS
- 3) ALL STORM SEWER INSTALLED UNDER PARKING AREAS SHALL BE BACK FILLED W/ SELECTED TRENCH BACK FILL & COMPACTED

STORM DRAINAGE PLAN SCALE: 1" = 40'-0" **APPROVED**
PLANNING BOARD OF HOWARD COUNTY
DATE: MAY 29 1974

- 1) TOTAL PARKING 200 CARS (6.67 PER ALLEY)
- 2) ▲ INDICATES BUILDING EXIT
- 3) ▨ SHADED AREA INDICATES EXISTING PAVEMENT
- 4) FOR PROPOSED CONTOURS SEE SHEET A2-B
- 5) ——— EXISTING STORM DRAINS
- 6) ——— PROPOSED STORM DRAINS



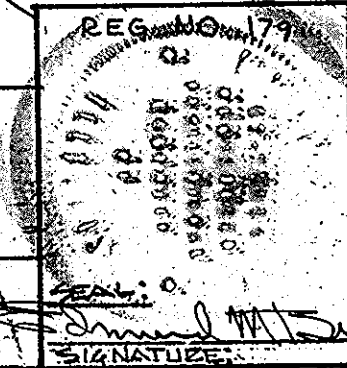
APPROVED: FOR PUBLIC WATER AND PUBLIC SEWERAGE SYSTEMS
HOWARD COUNTY HEALTH DEPARTMENT

[Signature] 6/1/74
COUNTY HEALTH OFFICER DATE

APPROVED: HOWARD COUNTY OFFICE OF PLANNING
DATE: 6-13-74
[Signature] 6/13/74
PLANNING DIRECTOR DATE

APPROVED: FOR PUBLIC WATER, PUBLIC SEWER, AND
SYSTEM DRAINAGE SYSTEMS AND ROADS
HOWARD COUNTY DEPARTMENT OF PUBLIC WORKS
DATE: 6/12/74
[Signature] 6/12/74
CHIEF, BUREAU OF HIGHWAYS DATE

VILLAGE OF OWEN BROWN
SECTION 2 AREA 2
PARCEL 8
TAX MAP 42 PARCEL 921
6TH ELECTION DISTRICT
HOWARD COUNTY MARYLAND



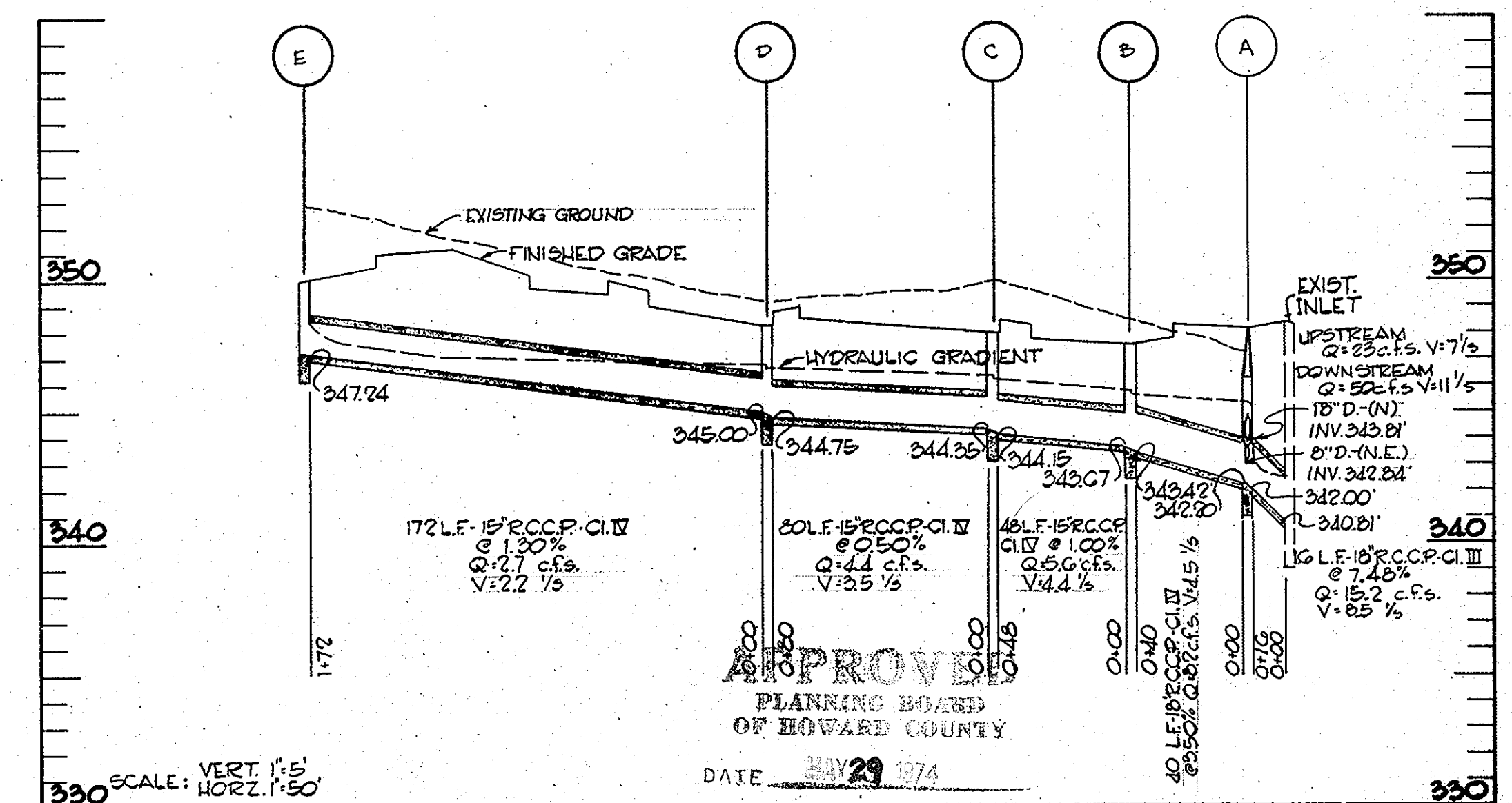
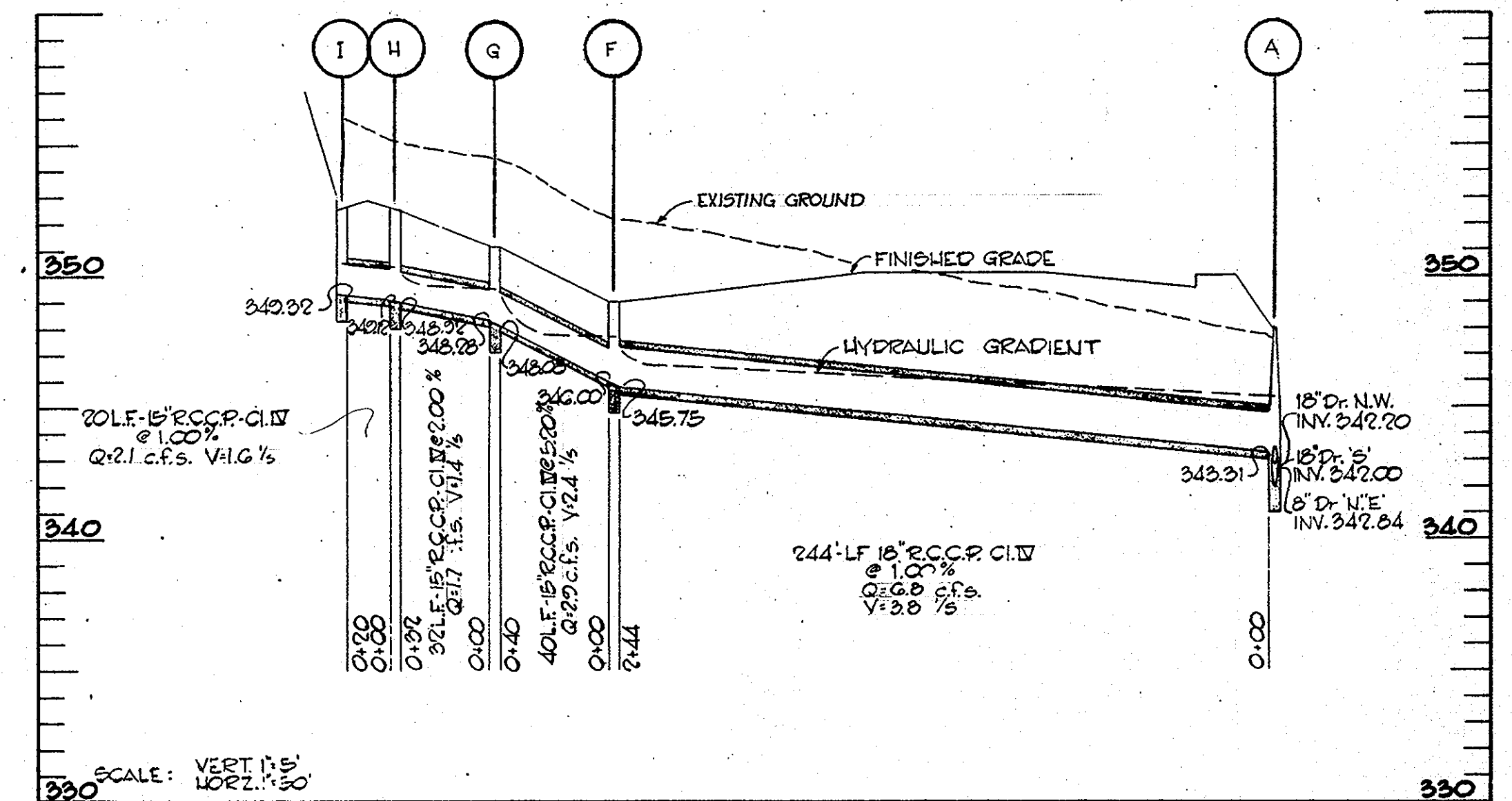
DUANE E. LINDEN ARCHITECT & ASSOCIATES
ARCHITECTS AND LAND PLANNERS
2205 EAST 1974 STREET LANSING, ILLINOIS 61460
OWNER-DEVELOPER: BRUNSWICK CORP. PARTNERSHIP
ONE BELLEVILLE PLAZA SKOKIE, ILLINOIS 60076
DATE: 6/12/74
SHEET: A-3

STRUCTURE SCHEDULE						
NO.	TYPE	LOCATION	INV. IN.	INV. OUT	TOP OF GRATE	REMARKS
I*	CLASS A-E INLET	SEE PLAN		349.32	354.10	HO. CO. DWG. G-4-A PG. 112-A
H*	CLASS A-E INLET	SEE PLAN	349.12	348.92	354.10	HO. CO. DWG. G-4-A PG. 112-A
G*	CLASS A-E INLET	SEE PLAN	348.28	348.08	352.50	HO. CO. DWG. G-4-A PG. 112-A
F	CLASS 'S' INLET	SEE PLAN	346.00	345.75	349.00	HO. CO. DWG. D-98 PG. 153
D	CLASS 'S' INLET	SEE PLAN	343.67	343.42	348.00	HO. CO. DWG. D-98 PG. 153
E	CLASS 'S' INLET	SEE PLAN		347.24	350.00	HO. CO. DWG. D-98 PG. 153
D	CLASS 'S' INLET	SEE PLAN	345.00	344.75	348.00	HO. CO. DWG. D-98 PG. 153
C	CLASS 'S' INLET	SEE PLAN	344.35	344.15	348.00	HO. CO. DWG. D-98 PG. 153
A	STD. MANHOLE *	SEE PLAN	344.31 342.20	342.00	347.75	HO. CO. DWG. D-103 PG. 158

* HOWARD COUNTY STANDARD SHALLOW MANHOLE WITH NEENAH FOUNDRY COMPANY R-2535 CATCH BASIN FRAME AND GRATE
 * THE CURB PIECES ON THESE INLETS SHALL BE SET TO MATCH THE CURB GRADE.

COMPUTATION OF PIPES AND CHANNELS

AREA NO.	REMARKS	INCR. ACRES	TOTAL ACRES	C	C x A	ACCUM. C x A	TIME	11N/HR.	Q CFS	PIPE SIZE	SLOPE % MIN. ACT.	VEL. 1/S	L. FT.	PIPE TIME
I	FROM I TO H	.38	.63	.24			9.7	6.2	2.1	15"	.10	1.00	1.6	20'
H	FROM H TO G	.07	.45	.95	.03	.27	9.7	6.2	1.7	15"	.07	2.00	1.4	32'
G	FROM G TO F	.29	.74	.65	.19	.46	9.7	6.2	2.9	15"	.20	5.20	2.4	40'
F	FROM F TO A	.94	1.68	.70	.66	1.12	10.0	6.1	6.8	18"	.40	1.00	3.8	244'
E	FROM E TO D	.57	.68	.39			5.0	7.0	2.7	15"	.18	1.30	2.2	172'
D	FROM D TO C	.29	.86	.85	.25	.64	6.3	6.8	4.4	15"	.45	0.50	3.5	80'
C	FROM C TO B	.22	1.08	.89	.20	.84	6.6	6.7	5.6	15"	.70	1.00	4.4	48'
B	FROM B TO A	.46	1.54	.85	.39	1.23	6.8	6.7	8.2	18"	.57	3.50	4.5	40'
A	A TO EXISTING INLET	.21+.15	3.58	.60	.22	2.57	11.4	5.9	15.2	18"	2.10	7.48	8.5	16'



APPROVED: FOR PUBLIC WATER AND PUBLIC SEWERAGE SYSTEMS,
 HO. CNTY. HEALTH DEPT.
 [Signature] 6/11/74
 COUNTY HEALTH OFFICER DATE

APPROVED: HOWARD COUNTY OFFICE OF PLANNING AND ZONING
 [Signature] 6-13-74
 PLANNING DIRECTOR DATE
 [Signature] 6/13/74
 CHIEF, DIV. OF LAND DEVELOPMENT AND TRANSPORTATION PLANNING DATE

APPROVED: FOR PUBLIC WATER, PUBLIC SEWER AND STORM DRAINAGE SYSTEMS AND ROADS, HOWARD COUNTY DEPT. OF PUBLIC WORKS
 [Signature] 6/2/74
 DIRECTOR DATE
 [Signature] 6/6/74
 CHIEF, BUREAU OF HIGHWAYS DATE

DATE: August 2, 1974

GREEN ASSOCIATES, INCORPORATED
 CONSULTING ENGINEERS
 TOWSON, MARYLAND

DATE: 3-1-74
 DRAWN BY: F.T.
 CHECKED BY: J.T.J.

PROJECT AREA: VILLAGE OF OWEN BROWN
 SECTION 2 AREA 2 PARCEL B

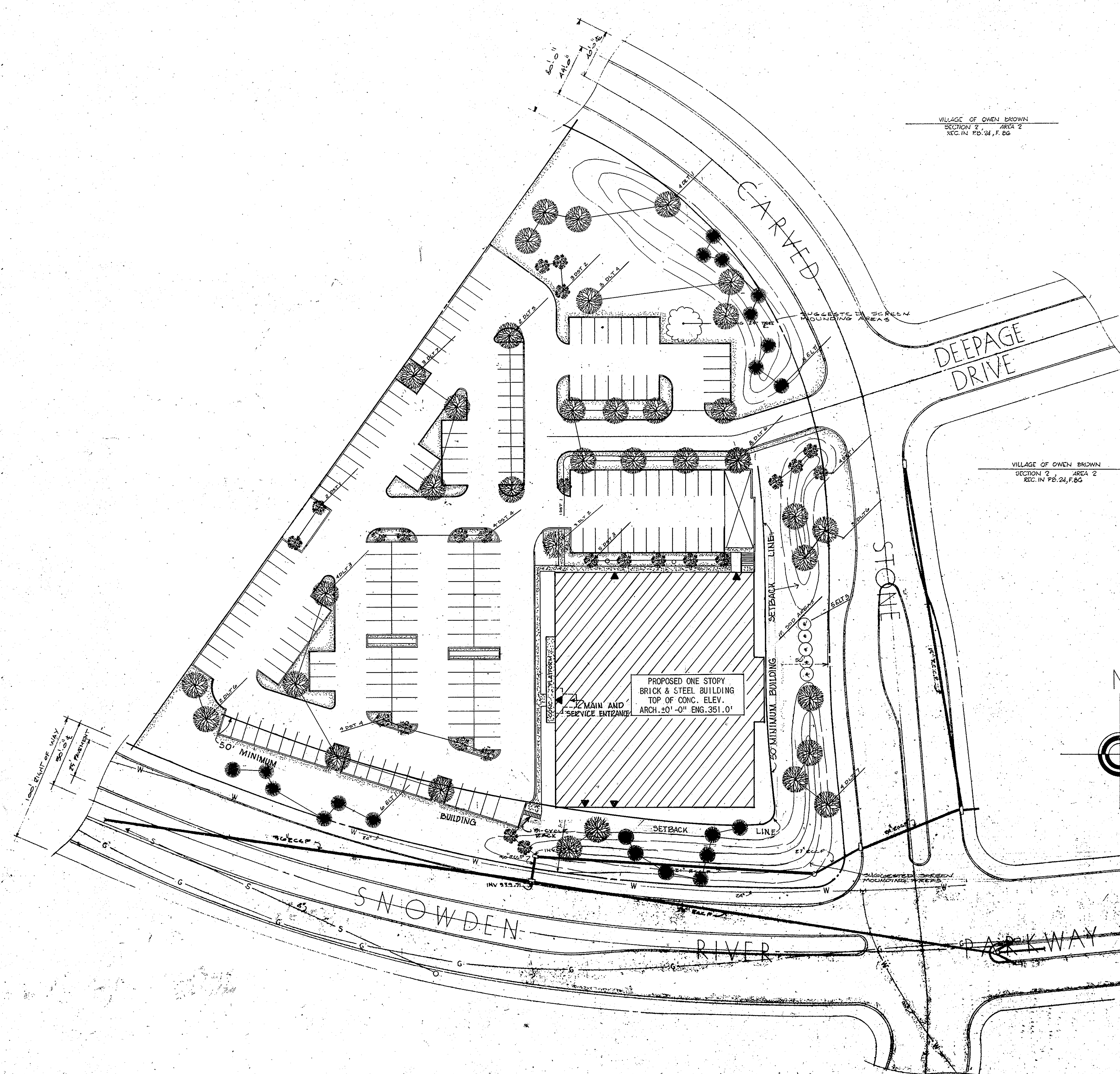
PROJECT TITLE: STORM DRAIN PROFILES

A-3A

SDP 74-97c

FINAL PLANT SCHEDULE

SYMBOL	BOTANICAL NAME	COMMON NAME	SIZE	UNITS
LARGE DECIDUOUS TREES				
DLT 1	ACER RUBRUM	RED MAPLE	34"	4
DLT 2	ACER SACCHARUM	SUGAR MAPLE	41"	6
DLT 3	FRAXINUS LANCOLATA	SEEDLESS GREEN ASH	34"	4
DLT 4	GLIRICISIA T. INERMIS	THORNLESS HONEYLOCUST	41"	5
DLT 5	PLATANUS ACERIFOLIA	LONDON PLANETREE	34"	2
DLT 6	QUERCUS PALUSTRIS	PIN OAK	41"	13
DLT 7	TILIA AMERICANA	AMERICAN LINDEN	34"	7
SMALL DECIDUOUS TREES				
DST 1	MALUS SCHREDECKERI	FLOWERING CRAB	6'-7"	7
DST 2	CRATABOGUS PHAENOPYRUM	WASHINGTON THORN	6'-7"	5
DST 3	MALUS "TEA CRAB"	TEA CRAB	6'-7" & 4-1/2"	8
DST 4	AMLANCHIES CANADENSIS	SHADELOW SERVICEBERRY	6'-7"	6
EVERGREEN LARGE TREES				
ELT 1	PINUS NUNGA AUSTRIAN	NIJGA PINE	6'-7"	14
ELT 2	PICRA PUNGENS VIRIDIS	COLORADO GREEN SPRUCE	6'-7"	7
ELT 3	N/A	EASTERN WHITE PINE	8'-10"	5



LANDSCAPE PLAN SCALE 1"=40'-0"

1) TOTAL PARKING 200 SPACES (0.25 PER ALLEY)
 2) ▲ INDICATES BUILDING EXIT
 3) ▣ SHADED AREA INDICATES EXISTING PAVEMENT

GENERAL NOTES:
 1) LOT CLASSIFICATION - UNWOODED TO MOOSE LAWN AREA
 2) ALL PLANT MATERIAL & PLANTING METHODS MUST MEET THE REQUIREMENTS OF THE COLUMBIAN ARCHITECTURAL COMMITTEE SUB-PART 2 & 3
 3) SEE FINISH GRADING PLAN FOR GRADES

APPROVED
 PLANNING BOARD
 OF HOWARD COUNTY
 DATE MAY 29 1974
James L. Hering

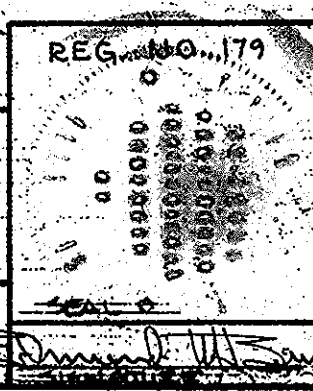
APPROVED FOR PUBLIC WATER AND PUBLIC SEWER SYSTEMS
 HOWARD COUNTY HEALTH DEPT.

Alvarez, W 6/1/74
 COUNTY HEALTH OFFICER

APPROVED BY HOWARD COUNTY OFFICE OF PLANNING
James L. Hering 6-13-74
Pat O'Connell 6-13-74
 PLANNING DIVISION OF LAND DEVELOPMENT DEPT.
 & TRANSPORTATION PLANNING

APPROVED FOR PUBLIC WATER & PUBLIC SEWER SYSTEMS
 HOWARD COUNTY DEPARTMENT OF PUBLIC WORKS
Will - R. Utz 6/13/74
 COUNTY BUREAU OF HIGHWAYS

VILLAGE OF OWEN BROWN
 SECTION 2 - AREA 2
 PARCEL 8
 TAX MAP 42 PARCEL 321



DUANE E. LINDEN ARCHITECT & ASSOCIATES
 ARCHITECTS AND LAND PLANNERS
 2209 EAST 177th STREET LANSING, MICHIGAN 48906
 REG. NO. 179
 7357
 MAY 9 1974