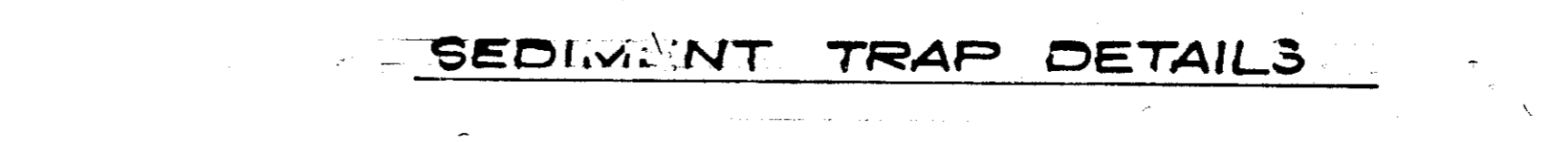
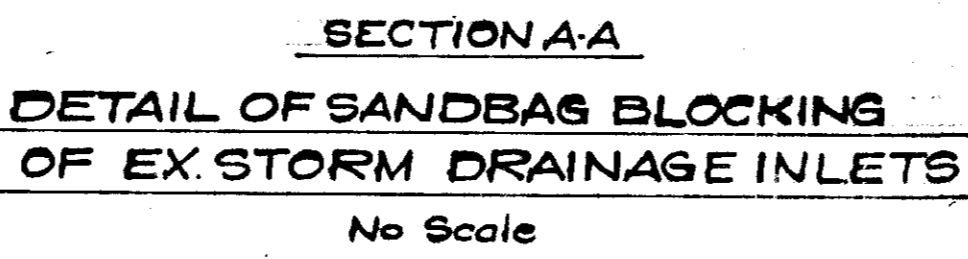
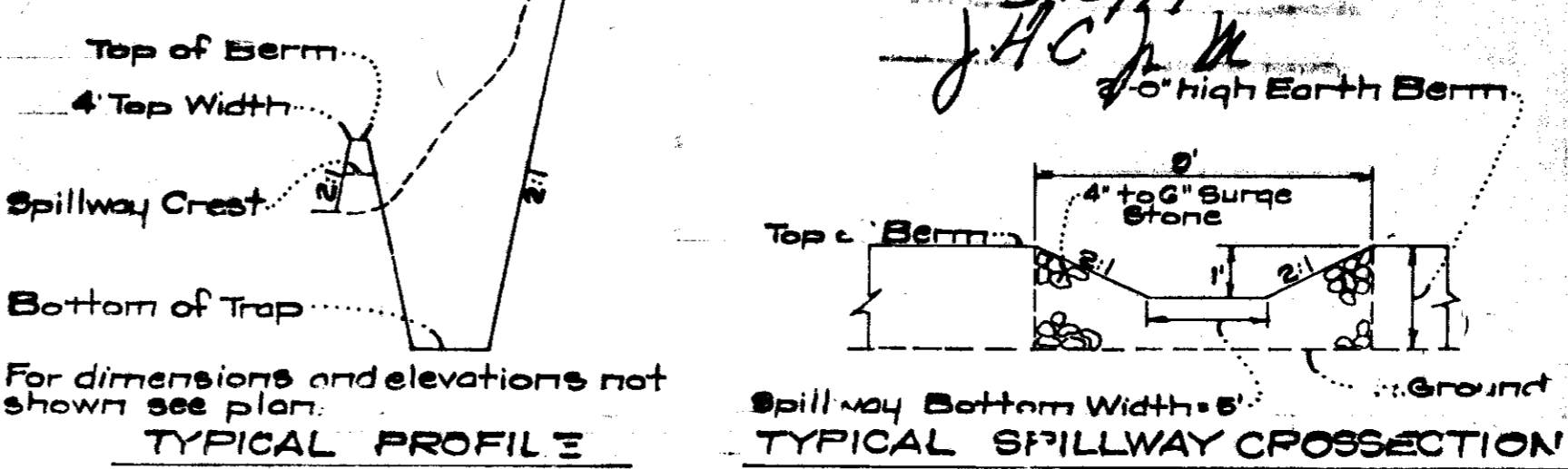
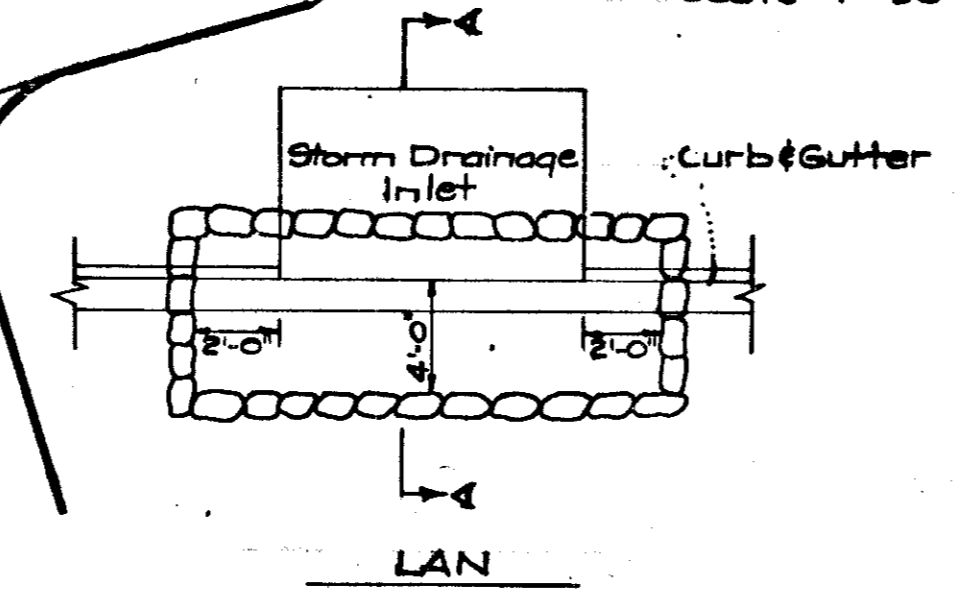


- ### GENERAL NOTES
- All Sediment and Erosion Control Measures will be installed and stabilized according to this plan prior to any other grading, clearing, or disturbance of the existing surface of the site.
 - Notify the Howard Soil Conservation District at least 24 hours before starting any work.
 - All Sediment Control Practices to conform to the standards and specifications for Soil Erosion and Sediment Control in Urbanizing Areas and shall be adjusted to meet actual field conditions.
 - Stabilization of disturbed ground to be done as soon after construction as possible.
 - All graded areas shall be treated in accordance with the following specifications:
 - Seed-certified 25% germination applied at the rate of 3 lbs./1000 sq. ft.; mixture - 40% Kentucky Blue, 20% Chewink Fescue, 20% Kentucky 31, and 20% Annual Ryegrass.
 - Fertilizer - 5-10-10 applied at the rate of 25 lbs./1000 sq. ft. and ground agricultural lime or dolomitic lime applied at the rate of 40 lbs./1000 sq. ft.
 - Mulch - Weed-free grain straw applied at the rate of 70 lbs./1000 sq. ft. Mulch shall be secured to the ground by any approved method, i.e. asphalt locks, chemical binder, wood chips, etc.
 - All structural sediment control measures are to remain in place until permission for their removal has been obtained from the Howard Soil Conservation District, phone 465-8188 or 465-6000, ext. 328.
 - On-site inspection and maintenance of all sediment control measures including clearing of sediment traps and berms, and proper establishment of all planned vegetative measures will be the responsibility of the Developer or his representative on the site, on a continuing day-to-day basis.
 - Protection of stabilized lots from sediment runoff shall be provided by the use of an approved sediment control device, i.e. stone filter berms, straw bales, etc.
 - Storm Drainage inlets in Buckstone Court, Buttonhole Court, and Hawkeye Run shall be blocked with sandbags prior to site grading and all sediment shall be periodically removed from paved areas.

- ### SEDIMENT TRAP NOTES
- All Sediment Traps to be cleaned out when sediment reaches a level 3' below top of berm.
 - Bottoms of all Sediment Traps to be level and constructed to the dimensions shown in plan view.
 - Spillways to be constructed through Earth Berms adjacent to excavated portion of Sediment Trap.



ENGINEER'S CERTIFICATE
 I hereby certify that this plan for Erosion and Sediment Control represents a practical and workable plan based on my personal knowledge of the site conditions and that it was prepared in accordance with the requirements of the Howard Soil Conservation District.

D. Nelson Clark
 6-13-74
 D. Nelson Clark
 PROFESSIONAL ENGINEER

DEVELOPER'S CERTIFICATE
 I certify that all development and/or construction will be done according to this plan of development and plan for Erosion and Sediment Control, and I also authorize periodic on-site inspection by the Howard Soil Conservation District or their authorized agents as are deemed necessary. Deviation from this plan will not be made unless authorized by the Howard Soil Conservation District.

D. Nelson Clark
 6-13-74
 D. Nelson Clark
 REGISTERED PROFESSIONAL ENGINEER

Reviewed for *Howard* S.C.D. Name
 and meets Technical Requirements
J. A. ... 6-13-74
 Signature Date
 U.S. Soil Conservation Service

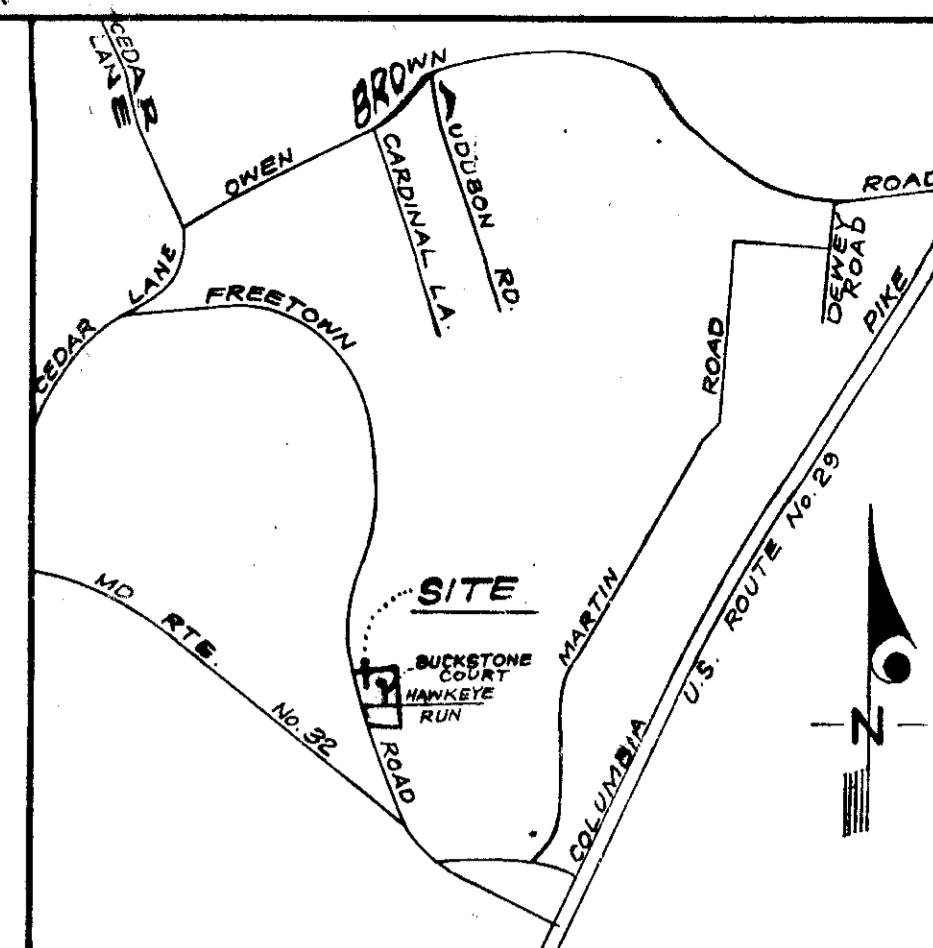
THIS DEVELOPMENT PLAN IS APPROVED FOR SOIL EROSION AND SEDIMENT CONTROL BY THE HOWARD SOIL CONSERVATION DISTRICT.

Approved *Robert W. ...* Date 6-13-74
 3/27/74
 Date *David ...*

CLARK • FINEFROCK & SACKETT ENGINEERS • PLANNERS • SURVEYORS		11315 LOCKWOOD DRIVE SILVER SPRING, MARYLAND 20904 (301) 593-3400
DESIGNED R.J.S.	SEDIMENT & EROSION CONTROL PLAN LOTS 68 THRU 71 AND 108 THRU 122 COLUMBIA	SCALE As Shown
DRAWN Suzan	VILLAGE OF HICKORY RIDGE SECTION 1 AREA 5 5TH ELECTION DISTRICT HOWARD COUNTY, MARYLAND	DRAWING 10F3
CHECKED G.N.C.	FOR RYLAND HOMES, COLUMBIA DIVISION 844 1/2 20th V.O.M. Office Building Columbia, Maryland 21045	JOB NO.
DATE Mar, 1974		FILE NO. 1127-SE

SDP-74-93c

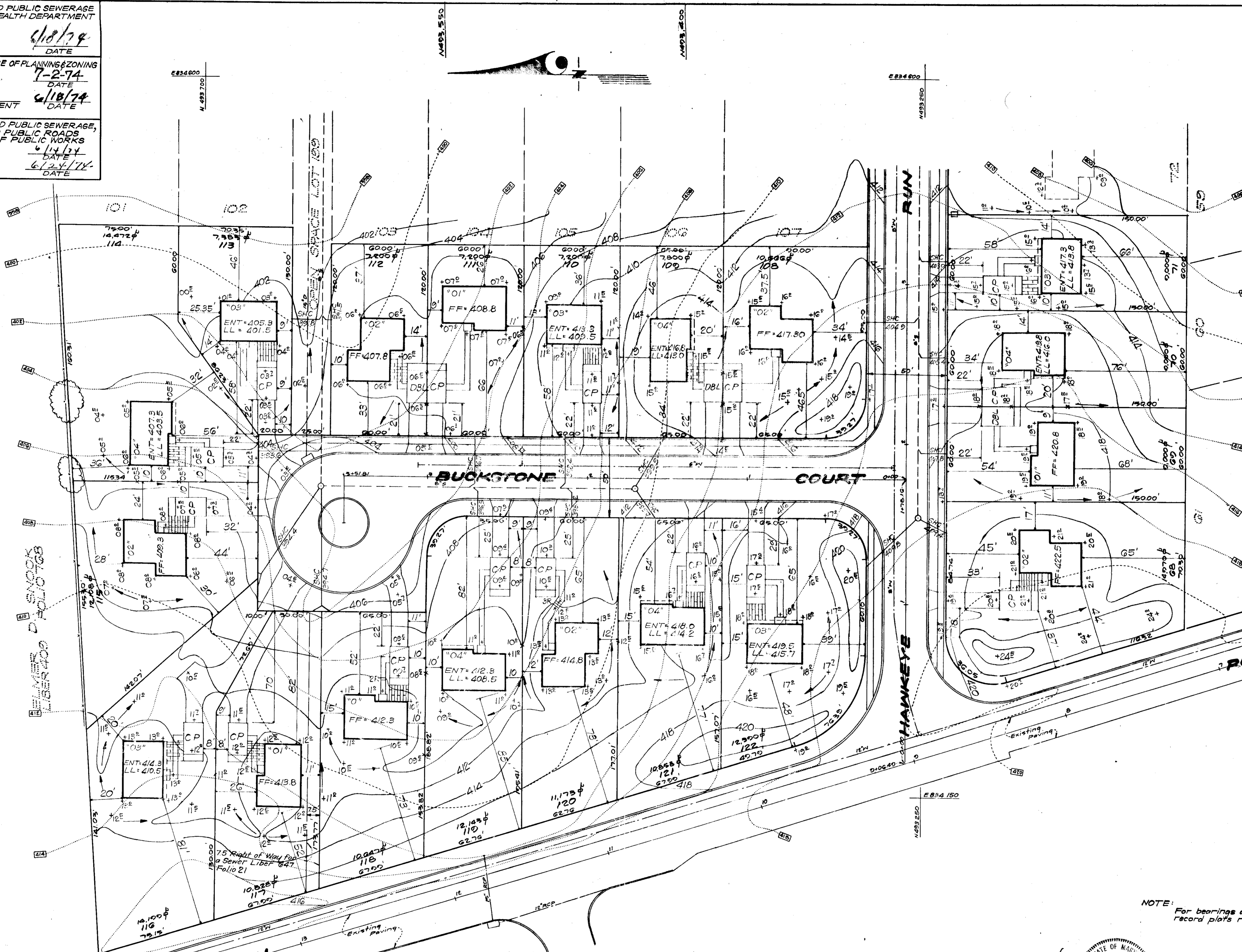
APPROVED FOR PUBLIC WATER AND PUBLIC SEWERAGE SYSTEMS, HOWARD COUNTY HEALTH DEPARTMENT
 COUNTY HEALTH OFFICER DATE 4/18/74
 APPROVED HOWARD COUNTY OFFICE OF PLANNING & ZONING 7-2-74
 PLANNING DIRECTOR DATE
 CHIEF DIVISION OF LAND DEVELOPMENT & TRANSPORTATION PLANNING 4/18/74
 DATE
 APPROVED FOR PUBLIC WATER AND PUBLIC SEWERAGE, STORM DRAINAGE SYSTEMS AND PUBLIC ROADS, HOWARD COUNTY DEPARTMENT OF PUBLIC WORKS
 DIRECTOR DATE 6/14/74
 CHIEF BUREAU OF HIGHWAYS DATE 6/24/74



VICINITY MAP
 SCALE: 1" = 2000'

LEGEND

- 1. Contour Interval 2 Ft.
- 2. Existing Contours - - - - - 4/10
- 3. Proposed Contours - - - - - 4/10
- 4. Spot Elevations +10E
- 5. Direction Of Drainage - - - - -
- 6. Yard Requirements:
 Front- 20' On 50' Wide Streets
 30' On 60' Wide Streets
 Side 7.5' (Min.)

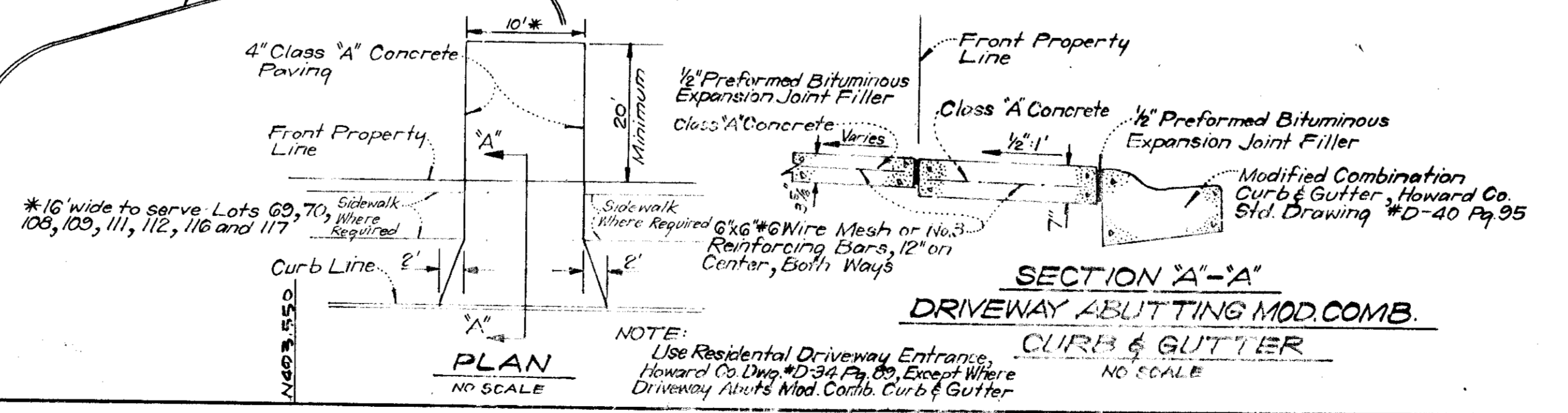


GENERAL NOTES

- 1. The Lots shown on this plan are covered by Final Development Plan Phase 1B6 recorded in Plat Book 20 Folios 249 to 254.
- 2. The Area covered in this submission is located on Tax Map No. 35.
- 3. Total No. of Lots = 19
- 4. Total Area of Lots = 198,237 sq. ft. or 4.551 Acs

5/15/74

NOTE: For bearings and distances of individual lot lines, see record plats recorded in Plat Book 25, Folios 6 and 14.



CLARK • FINEROCK & SACKETT
 ENGINEERS • PLANNERS • SURVEYORS
 11315 LOKWOOD DRIVE SILVER SPRING, MARYLAND 20904 (301) 565-3000

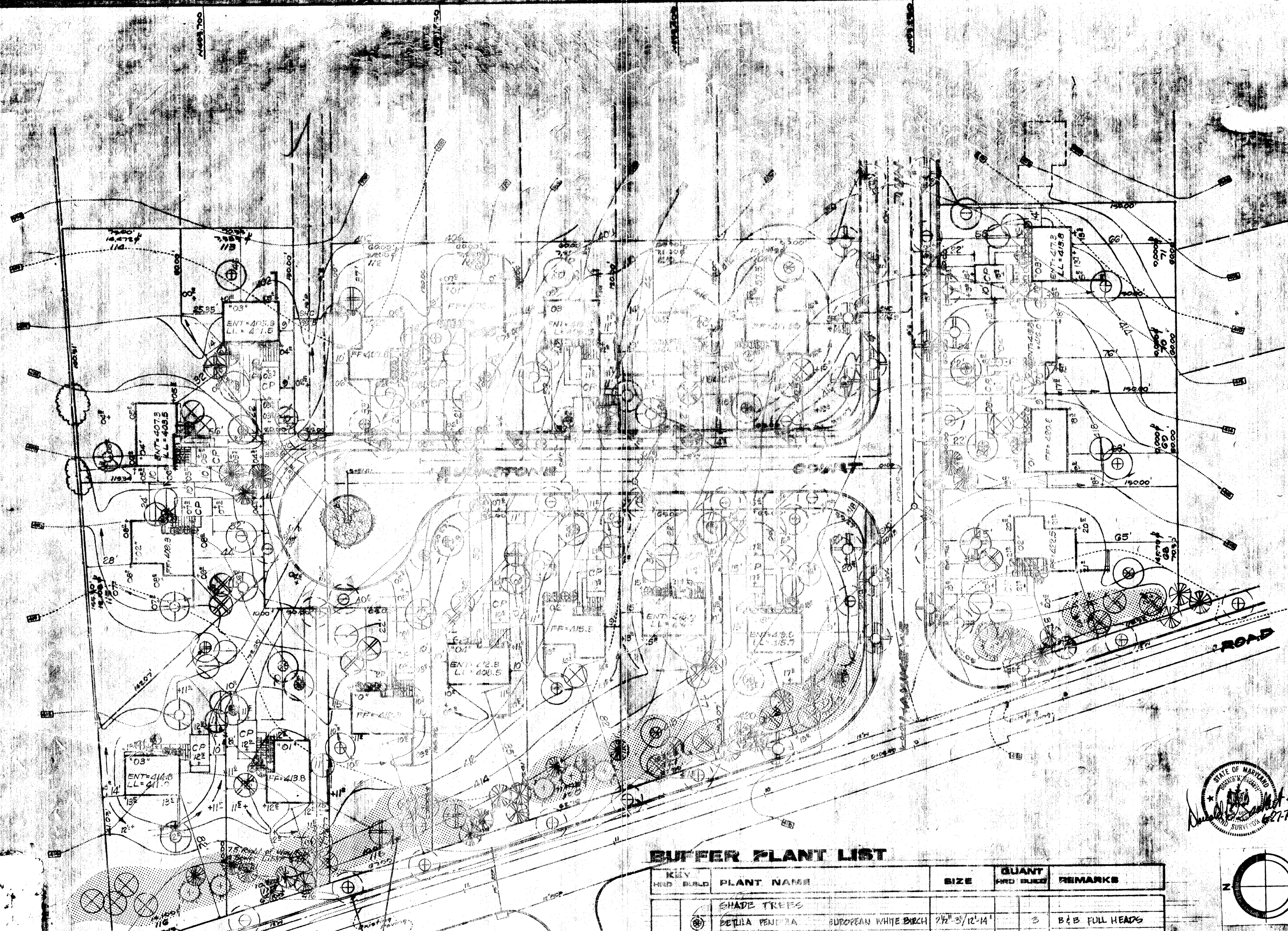
DESIGNED DBS
DRAWN KWC
CHECKED DBS
DATE Mar., 1974

DEVELOPMENT PLAN
 LOTS 68 THRU 117 AND 108 THRU 122
COLUMBIA
 VILLAGE OF HICKORY RIDGE
 SECTION 1 AREA A & B
 ELECTION DISTRICT
 HOWARD COUNTY, MARYLAND
 FOR: RYLAND HOMES, COLUMBIA DIVISION
 Suite 200 V.O.M. Office Building
 Columbia, Maryland 21045

SCALE: 1" = 30'
 DRAWING NO: 2 of 2
 JOB NO: 1050-X

SDP-74-93c

No.	Date	Per	Description
1	6/17/74	MHA	REVISED AS PER COUNTY COMMENTS.
2	6/24/74	WT	ADDED BUFFER PLANT LIST



APPROVED
DIVISION OF LAND DEVELOPMENT
AND TRANSPORTATION PLANNING
HOWARD COUNTY, MARYLAND
DATE: 5/15/74
JKC

TON
ENGINEERS, PLANNERS & SURVEYORS
1115 LOCKWOOD DRIVE SILVER SPRING, MARYLAND 20910

Project: V.H.R. FREETOWN SECTION I AREA 3
LOTS 08, 11 AND 100-122
THE RYLAND GROUP

Subject: PLANTING PLAN

DWG. No. TO-N-428-1

Date: 6-26-74 Dwn. By: F.G. GLOTT
Scale: 1" = 30'-0" Ck. By: [Signature]
Des. By: F.G. GLOTT App. By: [Signature]

BUFFER PLANT LIST

KEY	PLANT NAME	SIZE	QUANT	REMARKS
	SHADE TREES			
⊗	BETULA PENDULA EUROPEAN WHITE BIRCH	7 1/2" x 12-14"	3	B & B FULL HEADS
	INTERMEDIATE TREES			
⊕	ACER GINNALA AMUR MAPLE	1 1/2" x 6-8"	4	B & B FULL HEADS
⊗	MALUS DOUGLII DOUGLASS CRABAPPLE	1 1/2" x 6-8"	4	B & B FULL HEADS
⊗	PYRUS CAILESIANA BRADFORD PEAR	1 1/2" x 6-8"	12	B & B FULL HEADS
	EVERGREEN TREES			
⊗	PHILIP THUNBERGII JAPANESE BLACKPINE	5-6'	11	B & B HEAVY
⊗	PHILIP THUNBERGII JAPANESE BLACKPINE	6-8'	9	B & B HEAVY

NOTE: FINAL LOCATION AND SELECTION OF ALL PROPOSED PLANT MATERIAL IS TO BE APPROVED IN THE FIELD BY THE LANDSCAPE ARCHITECT AT THE TIME OF INSTALLATION. ALL PLANT MATERIALS ARE TO BE GUARANTEED BY THE LANDSCAPE CONTRACTOR FOR ONE FULL GROWING SEASON AFTER THE LAST PLANT HAS BEEN INSPECTED AND APPROVED BY THE LANDSCAPE ARCHITECT. ALL PLANT MATERIAL AND ALL PLANTING METHODS ARE TO BE IN CONFORMANCE WITH THE "U.S.A. COLUMBIA PLANTING SPECIFICATIONS" - THE U.S.A. STANDARD FOR NURSERY STOCK, LATEST EDITION. CONTRACTOR IS TO VERIFY CORRECT LOCATION OF ALL UNDERGROUND UTILITIES IN THE FIELD BEFORE PROCEEDING WITH THE INSTALLATION OF ANY OF THE PROPOSED PLANT MATERIAL.

APPROVED FOR PUBLIC WATER AND PUBLIC SEWERAGE SYSTEMS, HOWARD COUNTY HEALTH DEPARTMENT

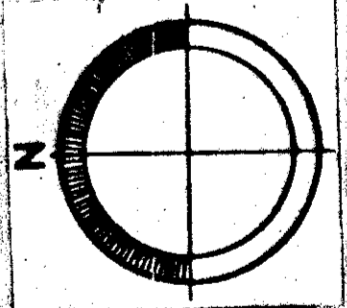
APPROVED HOWARD COUNTY OFFICE OF PLANNING & ZONING

DATE: 7/1/74

DATE: 7/1/74

DATE: 6/28/74

BUFFER PLANTING BY BUILDER - 43 TREES REQUIRED
HWD STREET TREES - 37 REQUIRED



CLARK • FINEPROCK & SACKETT
ENGINEERS • PLANNERS & SURVEYORS
1115 LOCKWOOD DRIVE SILVER SPRING, MARYLAND 20910

DEVELOPMENT PLAN
LOTS 08 THROUGH 11 AND 100 THROUGH 122
COLUMBIA
VILLAGE OF HICKORY RIDGE
SECTION I AREA 3
5th ELECTION DISTRICT
HOWARD COUNTY, MARYLAND

FOR: RYLAND HOMES, COLUMBIA DIVISION
Suite 200, V.O.M. Office Building
Columbia, Maryland 21045

50P74-93C