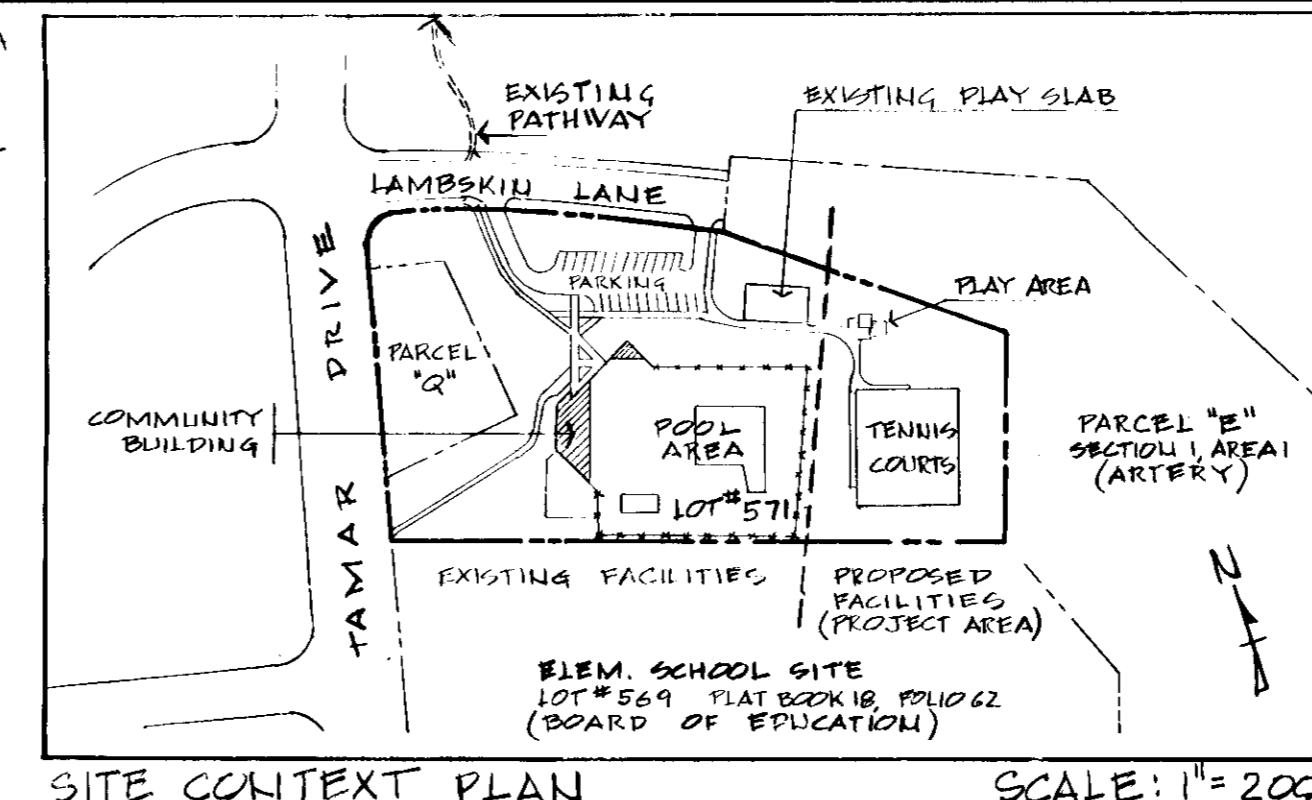


NOTE: ORIGIN OF THIS PIPE IS FROM THE POOL AREA TEMPORARILY DISCHARGING WATER OVER KIPPERAS AREA AND DRAINING OVERLAND IN DIRECTION OF ARROWS. THIS PIPE SHALL BE TIED INTO THE FUTURE STREET STORM SYSTEM WHEN LAMBSKIN LANE IS EXTENDED INTO PARCEL 'E'.



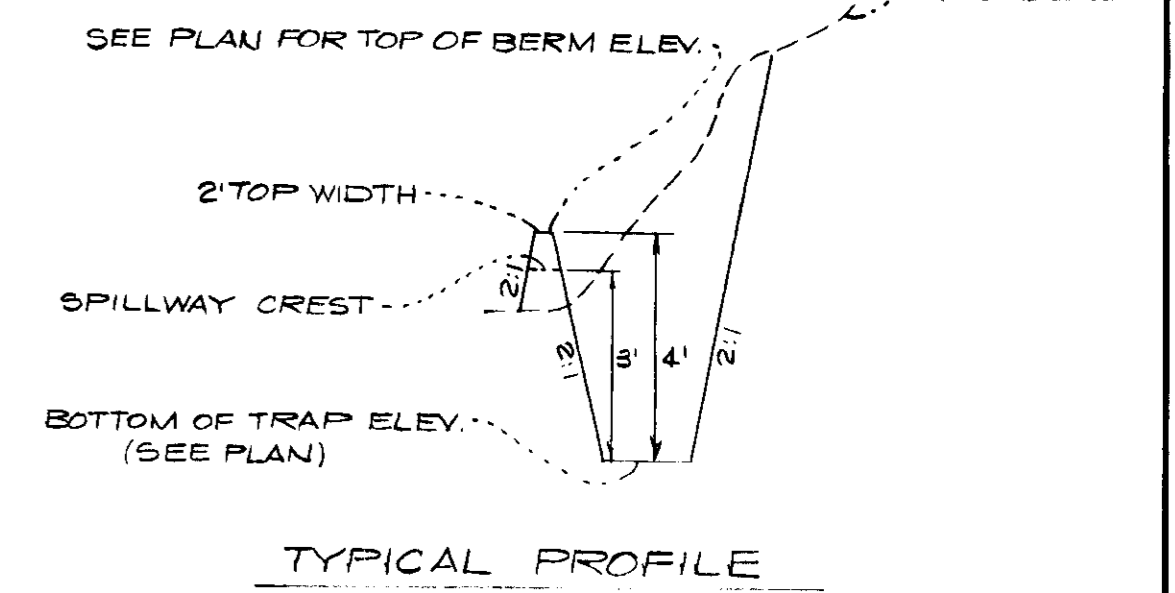
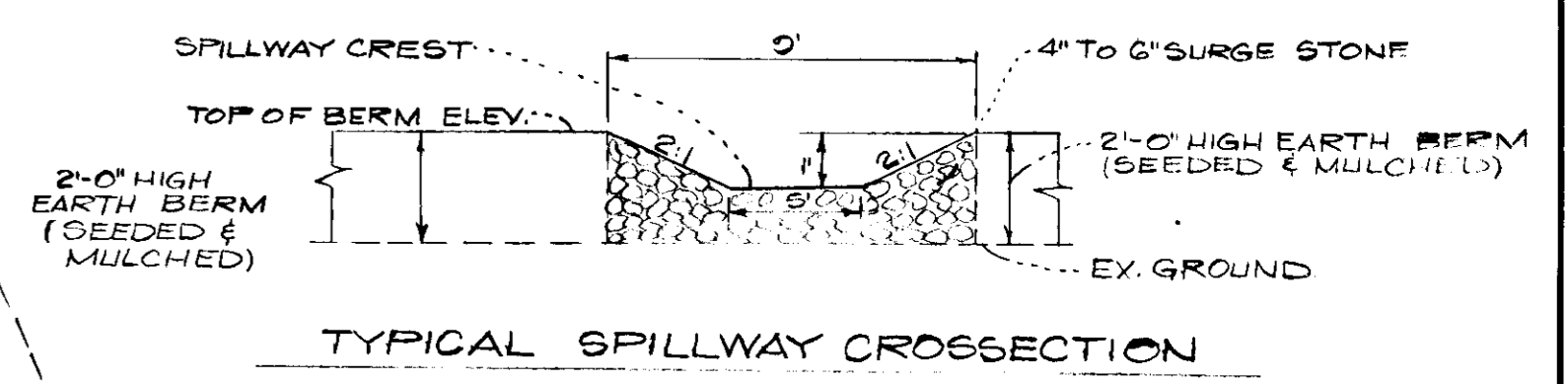
Revision Record			
No.	Date	Per	Description
1	2-24-74	WT	REVISED EROSION CONTROL MEASURES & ADDED ENGINEER'S SEAL
2	4-19-74	WT	REVISED AS PER COUNTY COMMENTS DATED 4/1/74

DEVELOPER'S CERTIFICATE  
I certify that all development and construction will be done according to this plan of development and plan for Erosion and Sediment Control, and I also authorize periodic on-site inspection by the Howard Soil Conservation District or their authorized agents as are deemed necessary. Deviation from this plan will not be made unless authorized by the Howard Soil Conservation District.  
Date: 2/25/74  
Signature: John A. McDonald

**NOTES: (SEDIMENT CONTROL)**

- SPECIFIED SEDIMENT CONTROL BERMS SHALL BE INSTALLED AND APPROVED BY HOWARD SOIL CONSERVATION DISTRICT BEFORE ON-SITE GRADING TAKES PLACE AND SHALL NOT BE REMOVED WITHOUT APPROVAL OF H.S.C.D.
- ALL AREAS DISTURBED BY GRADING OR CONTRACTOR'S OPERATIONS SHALL BE TOP SOILED, SEEDING & MULCHED IN ACCORD WITH FOLLOWING:
  - PLACE 4" TOP SOIL TO FINISHED GRADE.
  - SPREAD PULVERIZED BOLOMITIC LIMESTONE AT THE RATE OF 1/4 TON PER ACRE (60#/1000#)
  - SPREAD COMMERCIAL FERTILIZER 5-10-10 AT RATE OF 35#/1000# AND SUPERPHOSPHATE AT 600#/A (5#/1000#) IMMEDIATELY DISC INTO TOP SOIL TO 3" DEPTH.
  - SEED PREPARED AREAS AT RATE OF 200 #/A WITH FOLLOWING MIX: ANNUAL RYE GRASS (20%), KENTUCKY BLUE GRASS (30%), AND KENTUCKY "31" FESCUE 40%.
  - SOV WITH MECHANICAL SPREADER RAKE, MINIMUM OF TWO (2) PASSES WITH "YORICK RAKE", COVER & COMPACT WITH CULTIPACKER.
  - MULCH ALL AREAS IMMEDIATELY AFTER SEEDING WITH UNWEATHERED SMALL GRAIN STRAW @ RATE OF 1-5 T/A AND SPRAY MULCH WITH EMULSIFIED ASPHALT (R-10KZ) @ RATE OF 0.24 GAL./SQ. YD.
- SEE ATTACHED SPECIFICATIONS FOR ALL GRADING, PAVING, FENCING, STRIPING, LANDSCAPING, & ALL OTHER CONSTRUCTION AND INSTRUCTIONS TO CONTRACTOR(S) ALSO SEEDINGS # TON 313-243 & 343.
- DELAY FINAL GRADING IN AREAS OF SEDIMENT CONTROL DEVICES UNTIL PERMISSION FOR THEIR REMOVAL HAS BEEN GRANTED BY THE HOWARD SOIL CONSERVATION DISTRICT.

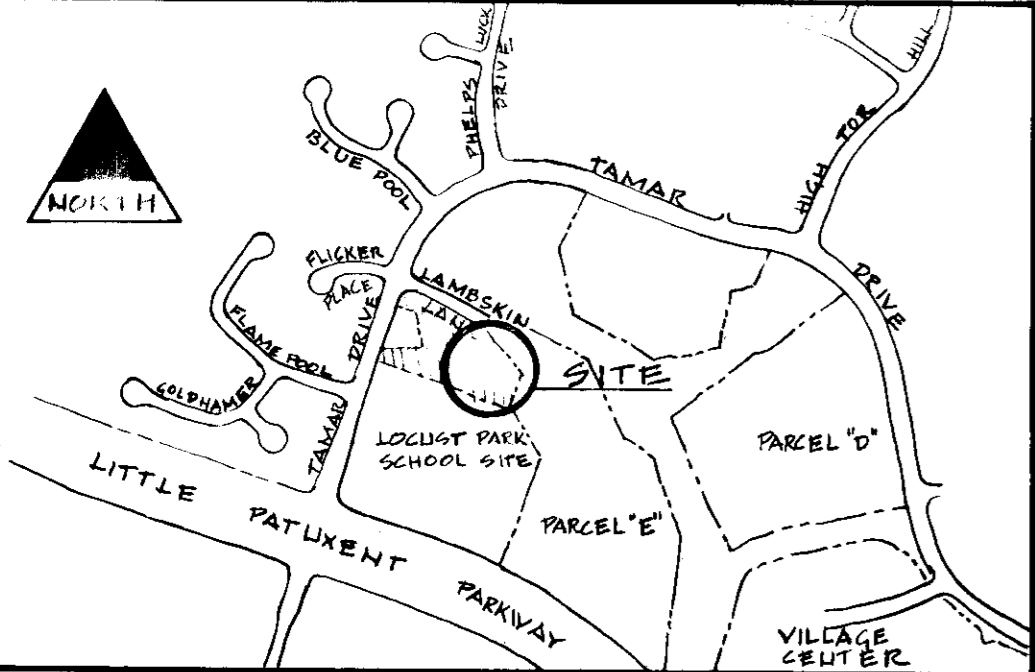
- NOTES: (SEDIMENT TRAP)**
- ALL SEDIMENT TRAPS TO BE CLEANED OUT WHEN SEDIMENT REACHES A LEVEL 2.5' BELOW TOP OF BERM.
  - BOTTOMS OF ALL SEDIMENT TRAPS TO BE LEVEL AND CONSTRUCTED TO THE DIMENSIONS SHOWN IN PLAN VIEW.
  - SPILLWAYS TO BE CONSTRUCTED THROUGH EARTH BERMS ADJACENT TO EXCAVATED PORTION OF SEDIMENT TRAP.



**SEDIMENT TRAP DETAILS**  
NO SCALE

ENGINEER'S CERTIFICATE  
I hereby certify that this plan for Erosion and Sediment Control is a true and correct copy of the plan as shown to me and that it complies with the requirements of the Howard Soil Conservation District.  
Date: 2-14-74  
Signature: Nelson Clark & Nelson Clark

**LOCATION MAP** SCALE: 1" = 800'



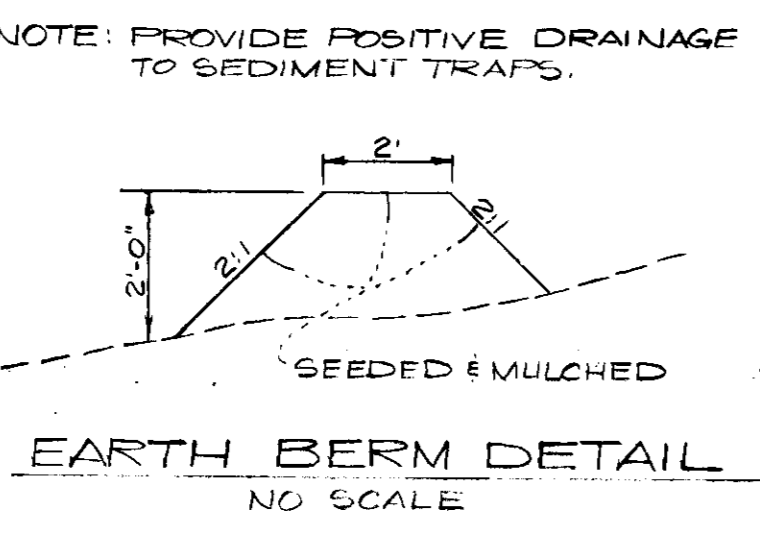
APPROVED FOR PUBLIC WATER AND PUBLIC SEWERAGE SYSTEMS, HOWARD COUNTY HEALTH DEPARTMENT  
COUNTY HEALTH OFFICER  
APPROVED: HOWARD COUNTY OFFICE OF PLANNING & ZONING  
CHIEF DIVISION OF LAND DEVELOPMENT & TRANSPORTATION PLANNING  
APPROVED FOR PUBLIC WATER AND PUBLIC SEWERAGE, STORM DRAINAGE SYSTEMS AND PUBLIC ROADS, HOWARD COUNTY DEPARTMENT OF PUBLIC WORKS  
CHIEF, BUREAU OF HIGHWAYS

Reviewed for Howard, J.D.  
Name: Howard, J.D.  
Date: 5-20-74  
Signature: [Signature]  
U.S. Soil Conservation Service  
NOTE: THIS PLAN IS APPROVED FOR SOIL EROSION AND SEDIMENT CONTROL BY THE HOWARD SOIL CONSERVATION DISTRICT.  
Date: 5-20-74  
Signature: [Signature]

ELEMENTARY SCHOOL SITE  
HOWARD CO. BOARD OF EDUCATION  
LOT # 569  
PLAT BOOK 18 FOLIO 62  
OWNER: COLUMBIA PARKS (RECREATION ASSOCIATION) COLUMBIA MARYLAND  
SITE: OPEN SPACE LOT #571 SECTION 1 AREA 1 6TH ELECTION DISTRICT  
RECORDATION: RECORDED IN PLAT BOOK 18 FOLIO 62 ON MAY 1, 1970 AROUND THE LAND RECORDS OF HOWARD COUNTY.

**SITE PLAN**  
1" = 20'-0"

NOTE: EXISTING TOPO TRACED FROM SURVEY PREPARED BY HUDKINS ASSOCIATES 1-3-74

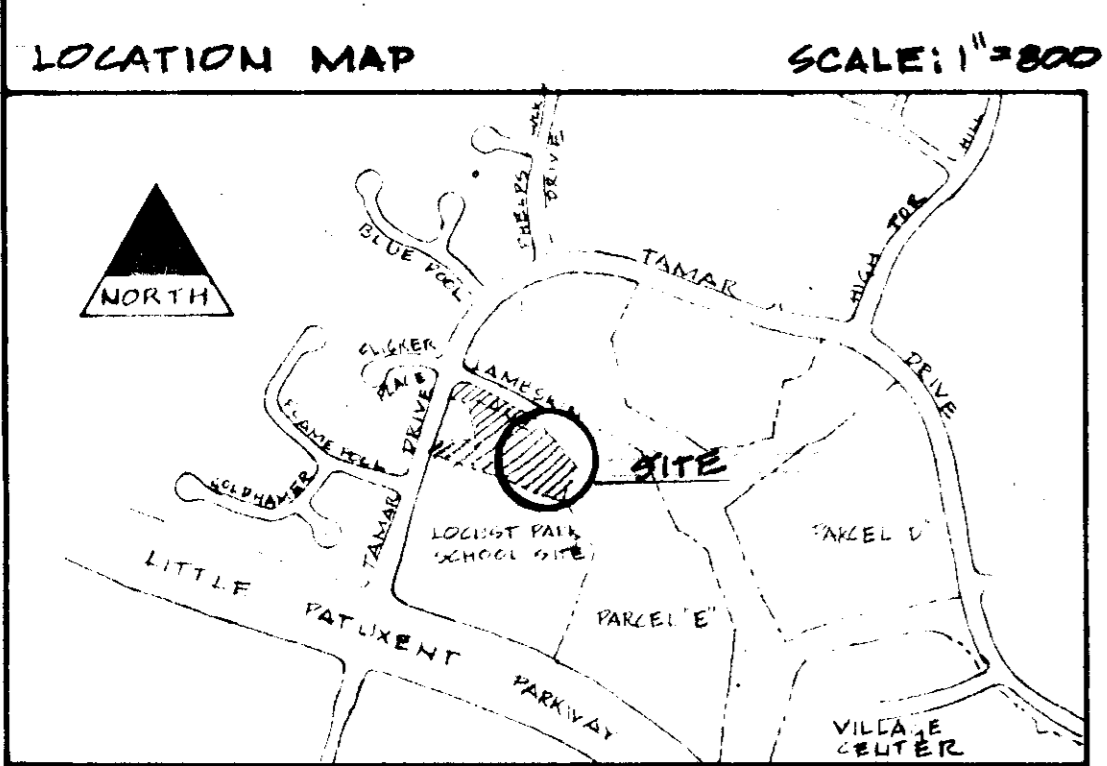
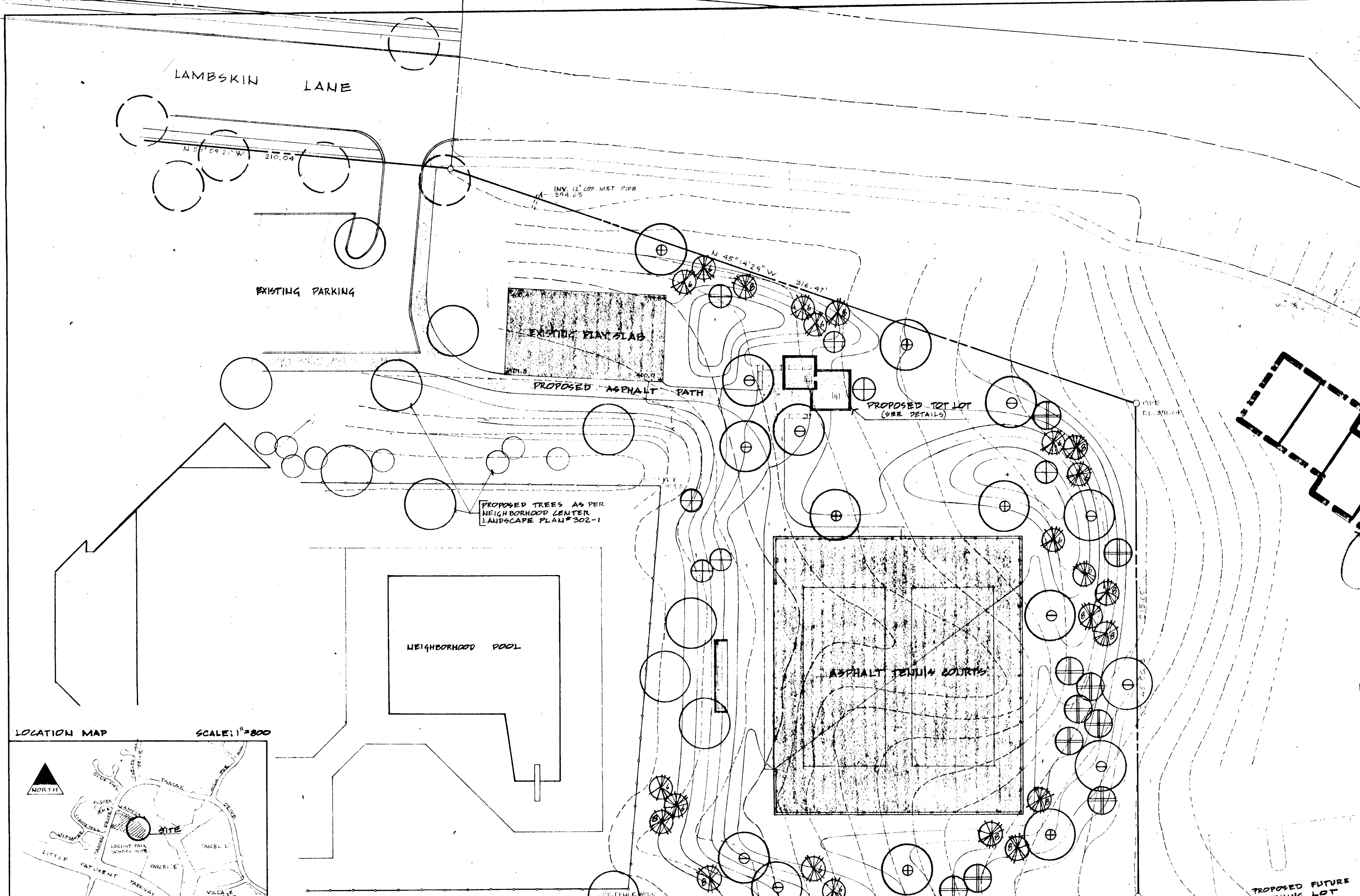


Ten Oaks Nursery and Gardens, Inc. Design Division  
Project: VILLAGE OF LONGFAC, SECTION 1 AREA 1, LOT 571, 6TH ELECTION DISTRICT, HOWARD COUNTY, MARYLAND  
Subject: TENNIS COURTS, SITE & GRADING PLAN  
DWG No. TON-313-1  
of 3  
Date: 1-28-74  
Scale: 1" = 20'-0"  
Des. By: W. HERRICK  
App. By: [Signature]  
Clk. By: [Signature]  
COP No. [Blank]

BRUNING 44132 21150



Revision Record			
No.	Date	Per	Description
1	4-19-74	WT	REVISED AS PER COUNTY COMMENTS DATED 4/8/74



APPROVED FOR PUBLIC WATER AND PUBLIC SEWERAGE SYSTEMS, HOWARD COUNTY HEALTH DEPARTMENT  
*[Signature]* 6/17/74  
 COUNTY HEALTH OFFICER DATE

APPROVED: HOWARD COUNTY OFFICE OF PLANNING AND ZONING  
*[Signature]* 7-3-74  
 PLANNING DIRECTOR DATE

APPROVED: CHIEF DIVISION OF LAND DEVELOPMENT  
*[Signature]* 7/2/74  
 CHIEF DIVISION OF LAND DEVELOPMENT DATE

APPROVED: FOR PUBLIC WATER AND PUBLIC SEWERAGE, STORM DRAINAGE SYSTEMS AND PUBLIC ROADS, HOWARD COUNTY DEPARTMENT OF PUBLIC WORKS  
*[Signature]* 6/21/74  
 DIRECTOR DATE

APPROVED: CHIEF DIVISION OF HIGHWAYS  
*[Signature]* 6/21/74  
 CHIEF DIVISION OF HIGHWAYS DATE

NUMBER SYMBOL	PLANT NAME	SIZE	QUANTITY	REMARKS
1. ⊕	ACER RUBRUM RED MAPLE	2 1/2-3" Cal. 12-14' Ht.	6	RED FULL HEADS
2. ⊖	MERCUS - PALUSTRIS PIN OAK	2 1/2-3" Cal. 12-15' Ht.	10	S&B FULL HEADS
3. ⊕	ACER - GINNALA AMUR MAPLE	2 1/2-3" Cal. 8-10' Ht.	10	T.S. HEAVY CLUMPS
4. ⊕	MALUS - BECHTEL BECHTEL CRAB	2-2 1/2" Cal. 6-8' Ht.	7	B&B HEAVY
5. ⊕	PINUS - STROBUS WHITE PINE	6-8' Ht.	12	B&B HEAVY
6. ⊕	PINUS - STROBUS WHITE PINE	8-10' Ht.	11	B&B HEAVY

NOTE: LOCATION OF ALL PLANT MATERIAL IS TO BE APPROVED IN THE FIELD BY THE LANDSCAPE ARCHITECT. ALL PLANT MATERIAL IS TO BE GUARANTEED BY THE LANDSCAPE CONTRACTOR FOR ONE FULL GROWING SEASON AFTER THE LAST PLANT HAS BEEN INSTALLED AND APPROVED BY THE LANDSCAPE ARCHITECT. ALL PLANT MATERIAL AND ALL PLANTING METHODS ARE TO BE IN CONFORMANCE WITH THE "M.R.C. COLUMBIA PLANTING SPECIFICATIONS" LATEST EDITION. ALL PLANT MATERIAL IS TO BE NURSERY GROWN IN ACCORDANCE WITH "THE U.S.A. STANDARD FOR NURSERY STOCK", LATEST EDITION.

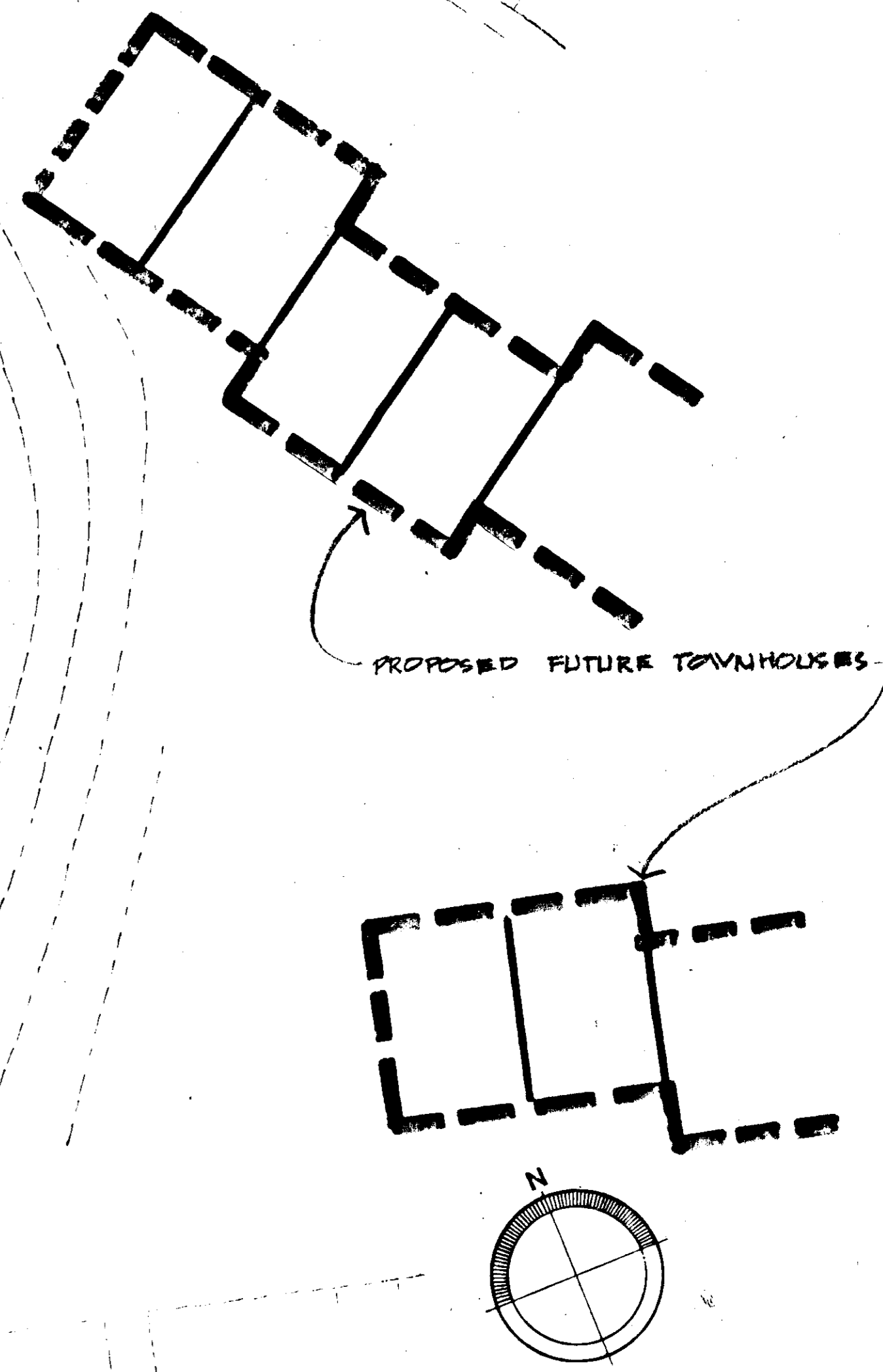
CONTRACTOR IS TO VERIFY CORRECT LOCATION OF ALL UNDERGROUND UTILITIES IN THE FIELD BEFORE PROCEEDING WITH THE INSTALLATION OF ANY OF THE PROPOSED PLANT MATERIAL.

NOTE: DASHED SYMBOL INDICATES PROPOSED STREET TREES TO BE PROVIDED BY H.R.D.

*[Signature]*



*[Signature]*  
 1-25-74



Ten Oaks Nursery and Gardens, Inc. Design Division **TON**

Project: VILLAGE OF LOUGHBROUGH SECTION 1 AREA 1 LOT 301 6TH ELECTION DISTRICT, HOWARD COUNTY, MD.

Subject: LANDSCAPE PLAN

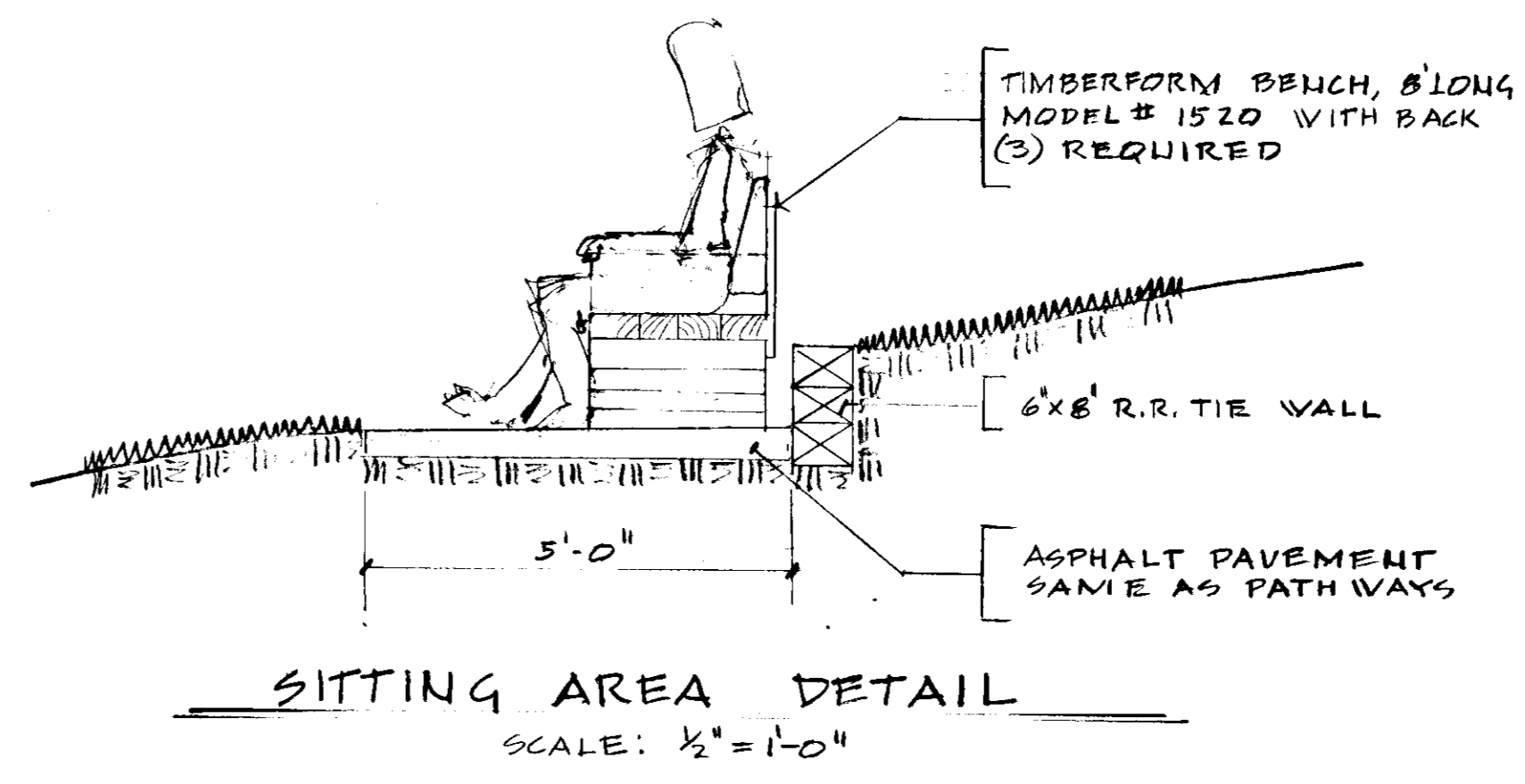
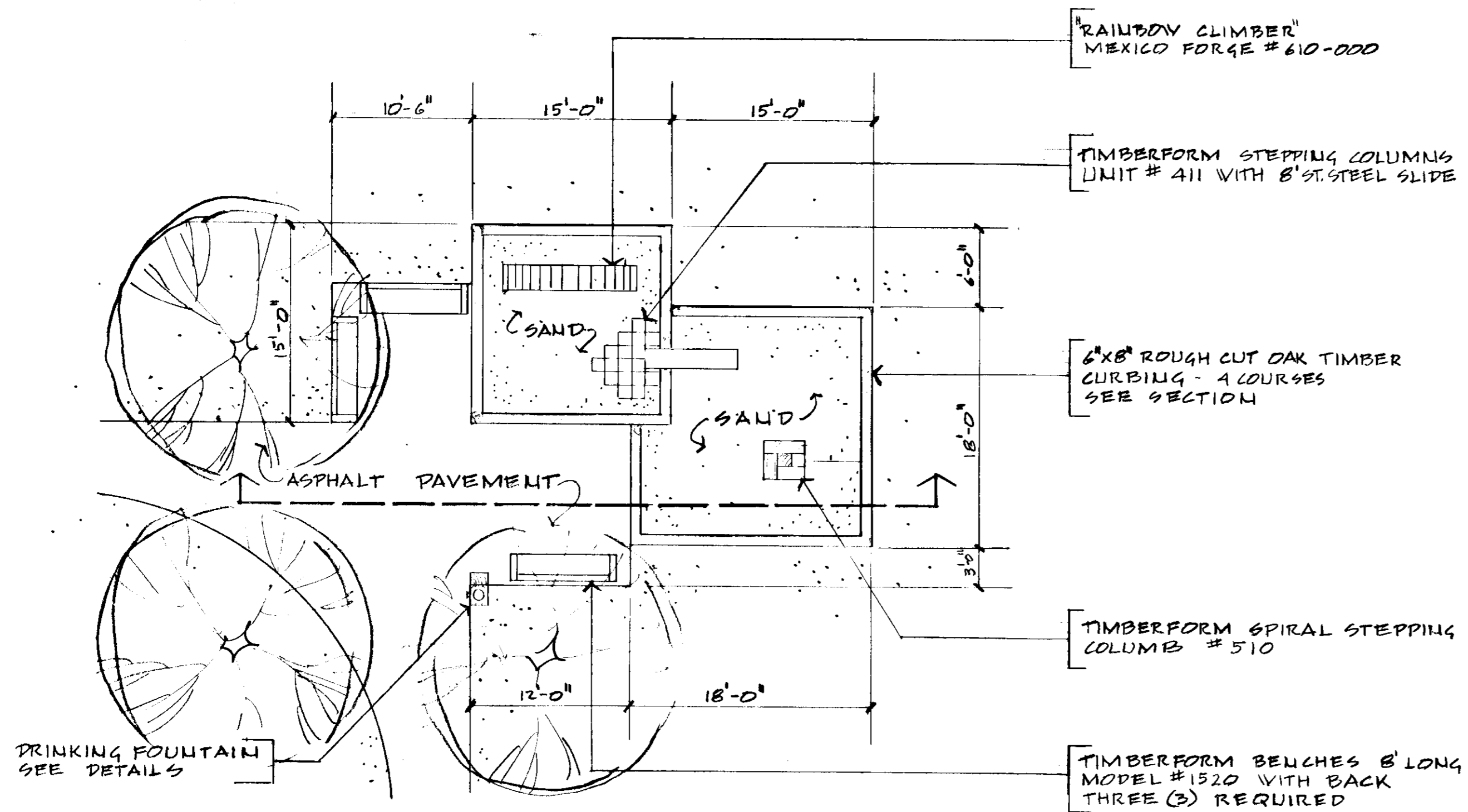
DWG No: **TON-313-2**

of **3**

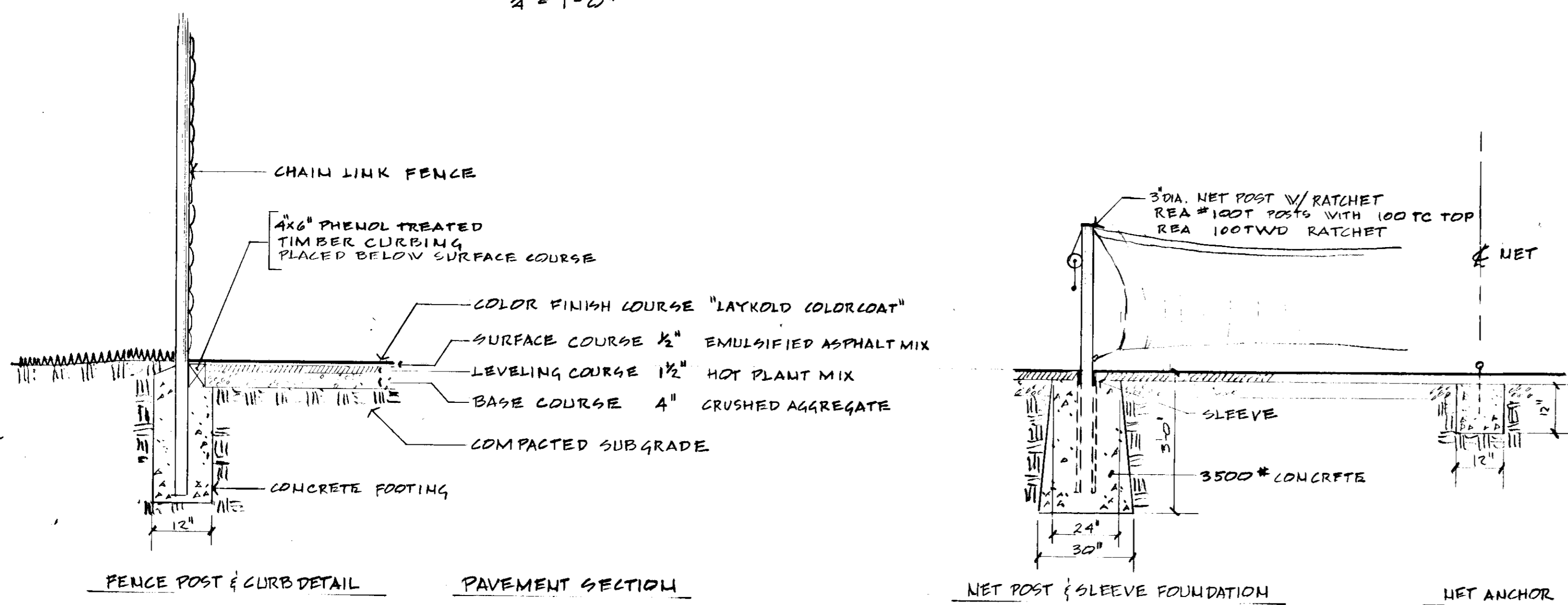
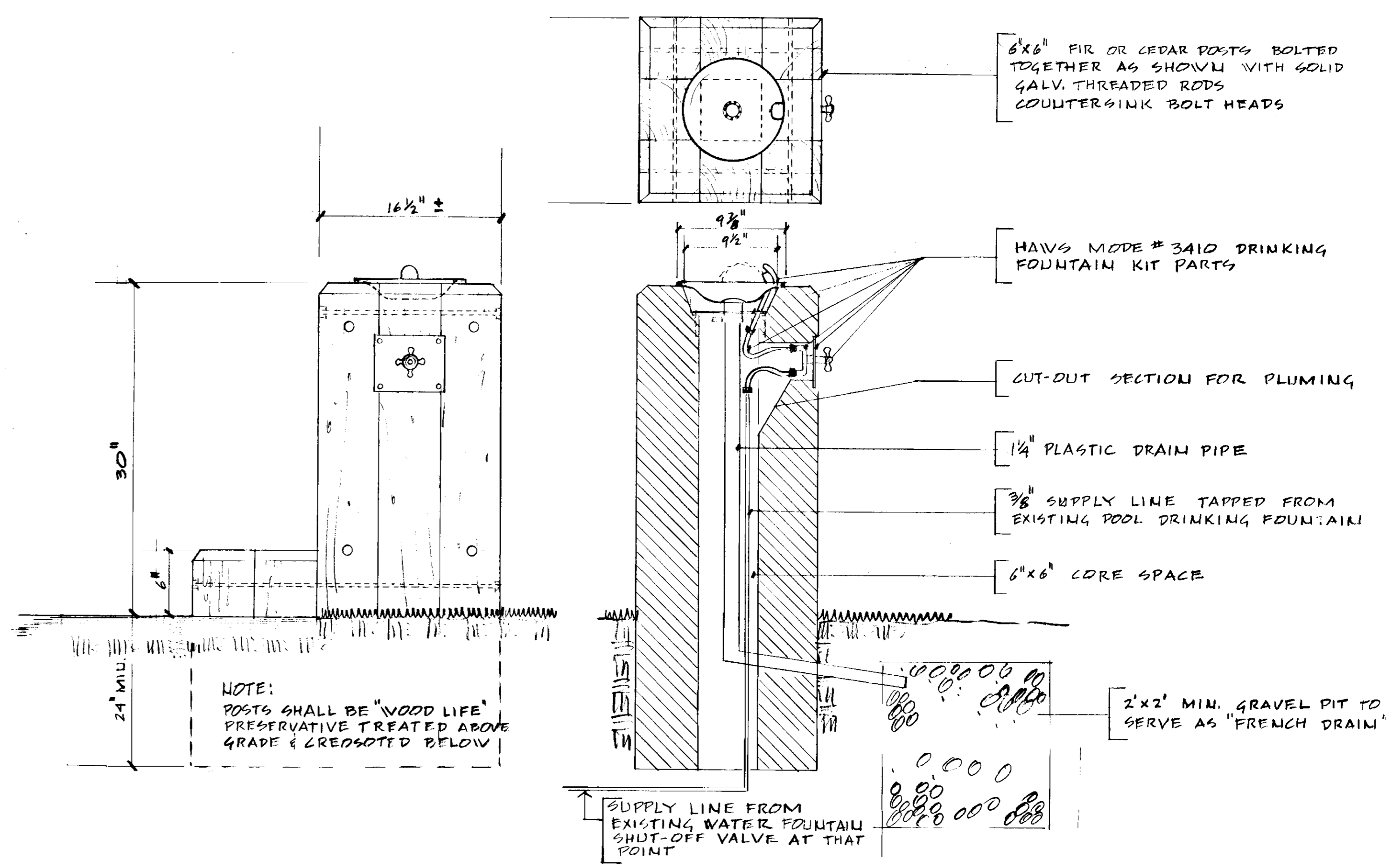
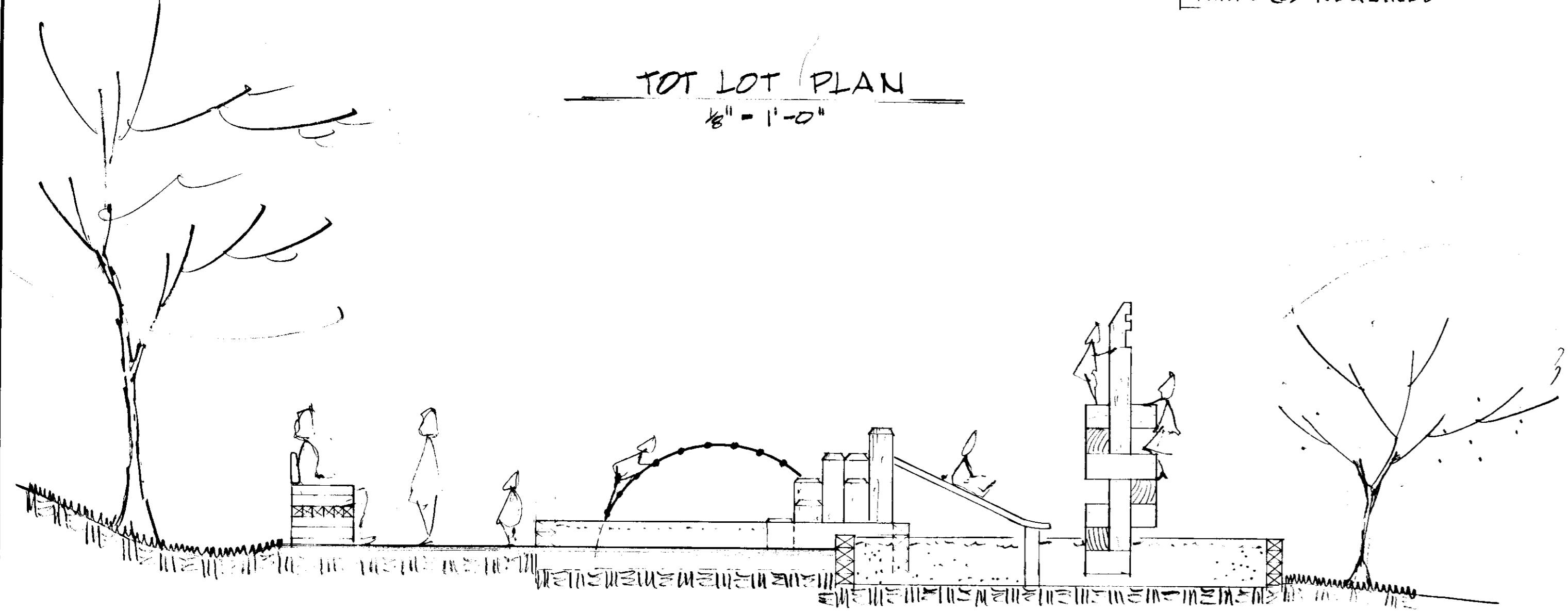
Date: 1-26-74	Drawn By: W. THEIMER
Scale: 1" = 20'-0"	Checked By:
Des By: W. THEIMER	App By:
CCF No:	

SDP-74-86C

Revision Record			
No.	Date	Per	Description
1	4/19/74	WT	REVISED AS PER COUNTY COMMENTS DATED 4/8/74



APPROVED FOR PUBLIC WATER AND PUBLIC SEWERAGE SYSTEMS, HOWARD COUNTY HEALTH DEPARTMENT  
*[Signature]* COUNTY HEALTH OFFICER DATE 6/27/74  
 APPROVED: HOWARD COUNTY OFFICE OF PLANNING & ZONING  
*[Signature]* PLANNING DIRECTOR DATE 7/2/74  
 APPROVED FOR PUBLIC WATER AND PUBLIC SEWERAGE, STORM DRAINAGE SYSTEMS AND PUBLIC ROADS, HOWARD COUNTY DEPARTMENT OF PUBLIC WORKS  
*[Signature]* DIRECTOR DATE 6/21/74  
 CHIEF BUREAU OF HIGHWAYS



Ten Oaks Nursery and Gardens, Inc.  
 Design Division  
 Project: VILLAGE OF LONGREACH SECTION I AREA I LOTS 1, 2TH ELECTION DISTRICT, HOWARD COUNTY, MARYLAND  
 Subject: DETAILS  
 DWG. No. **TON-313-3**  
 of 3  
 Date 1-28-74 Dwn. By W. THEPPEL  
 Scale NOTED Ck. By  
 Des. By W. THEPPEL App. By  
 CCF No.

*[Signature]*  
 J. N. Amelink  
 4-25-74

STATE OF MARYLAND  
 REGISTERED PROFESSIONAL ENGINEER

BRUNING 44132 21150

SDP-11-810 C