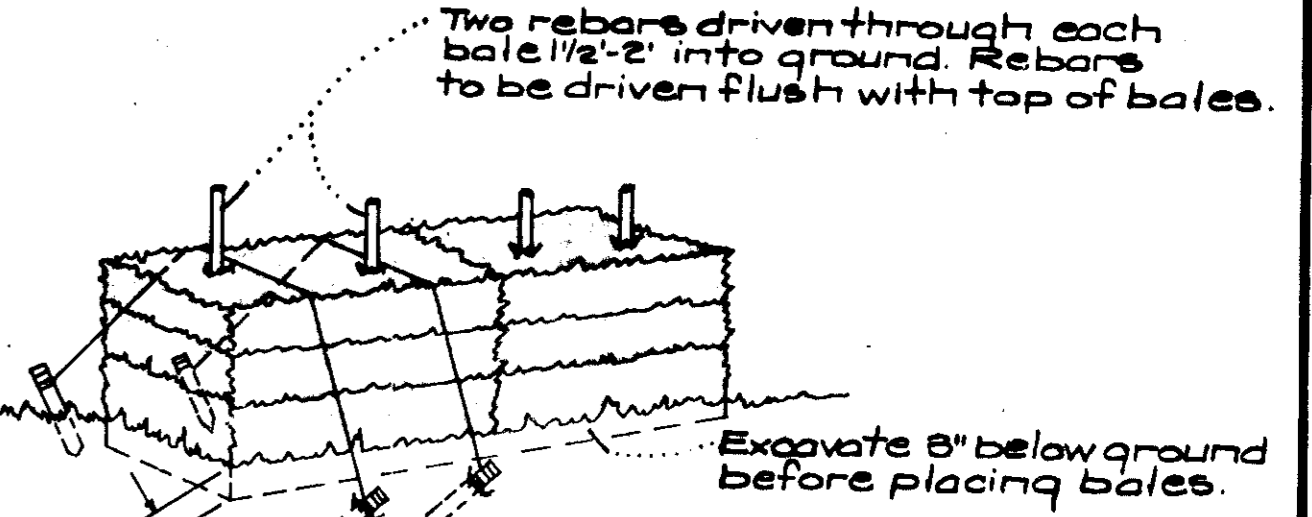
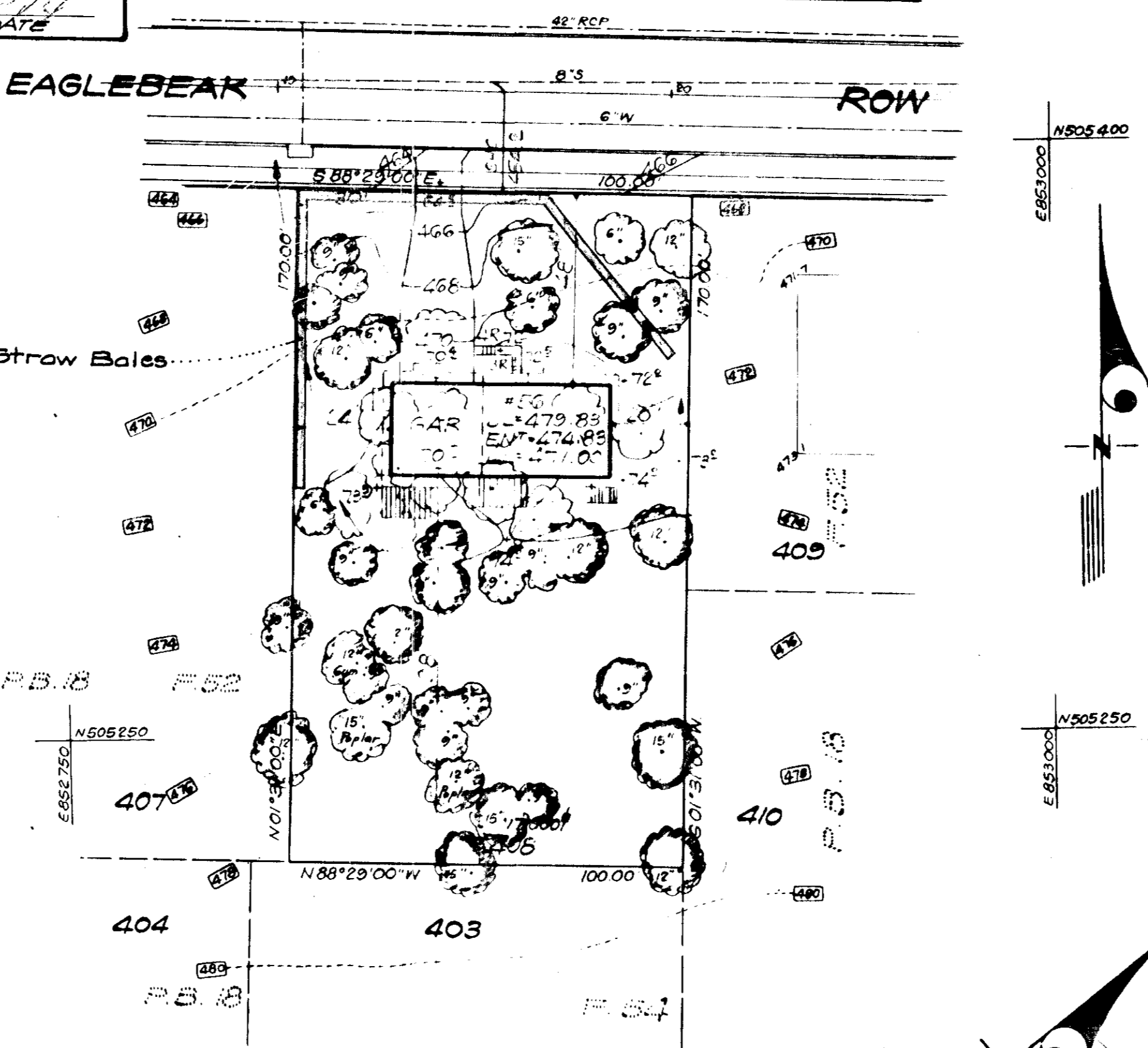
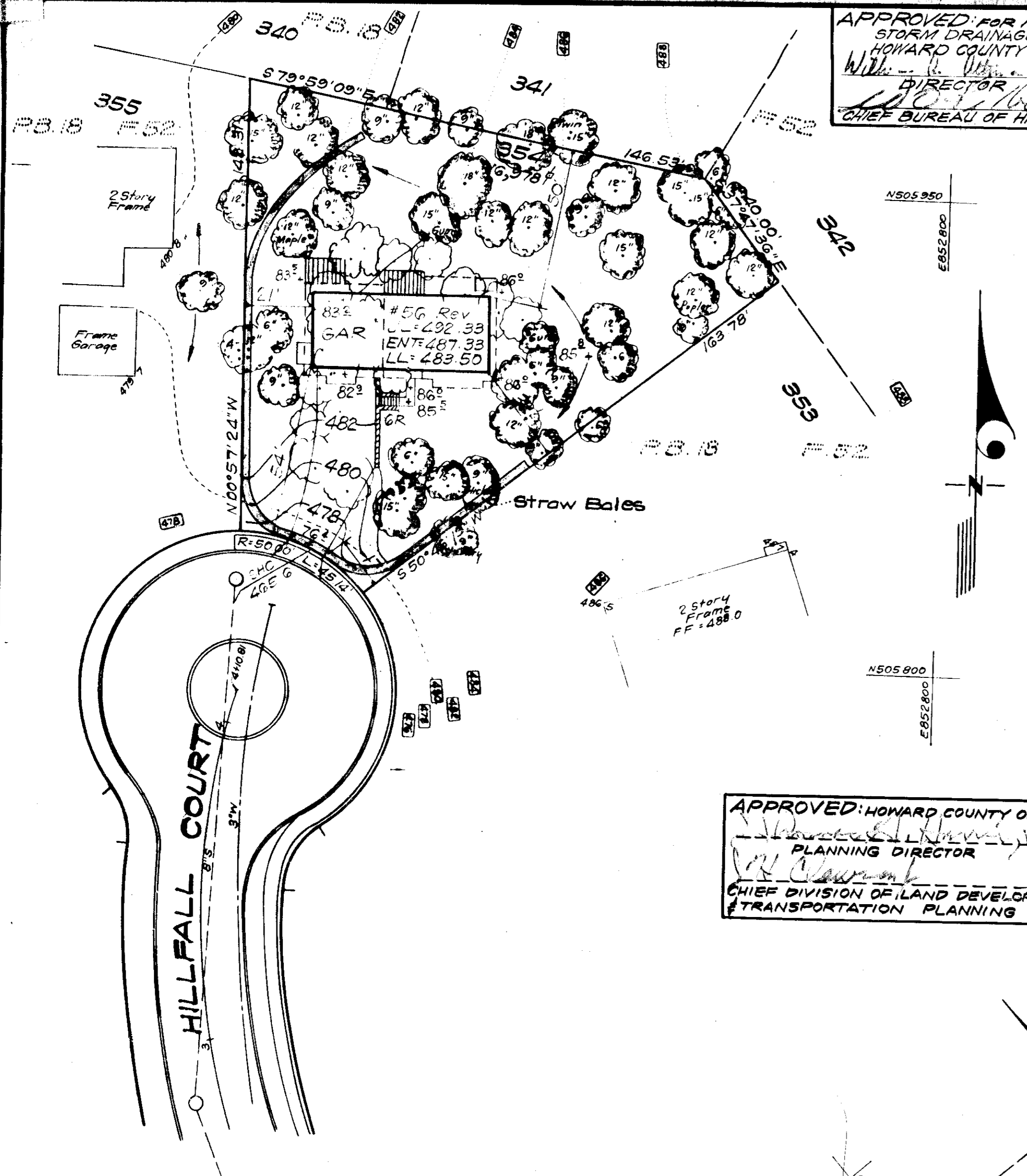


APPROVED FOR PUBLIC WATER AND PUBLIC SEWERAGE,
STORM DRAINAGE SYSTEMS AND PUBLIC ROADS
HOWARD COUNTY DEPARTMENT OF PUBLIC WORKS
W. J. [Signature]
DIRECTOR
DATE 5/6/74

GENERAL NOTES

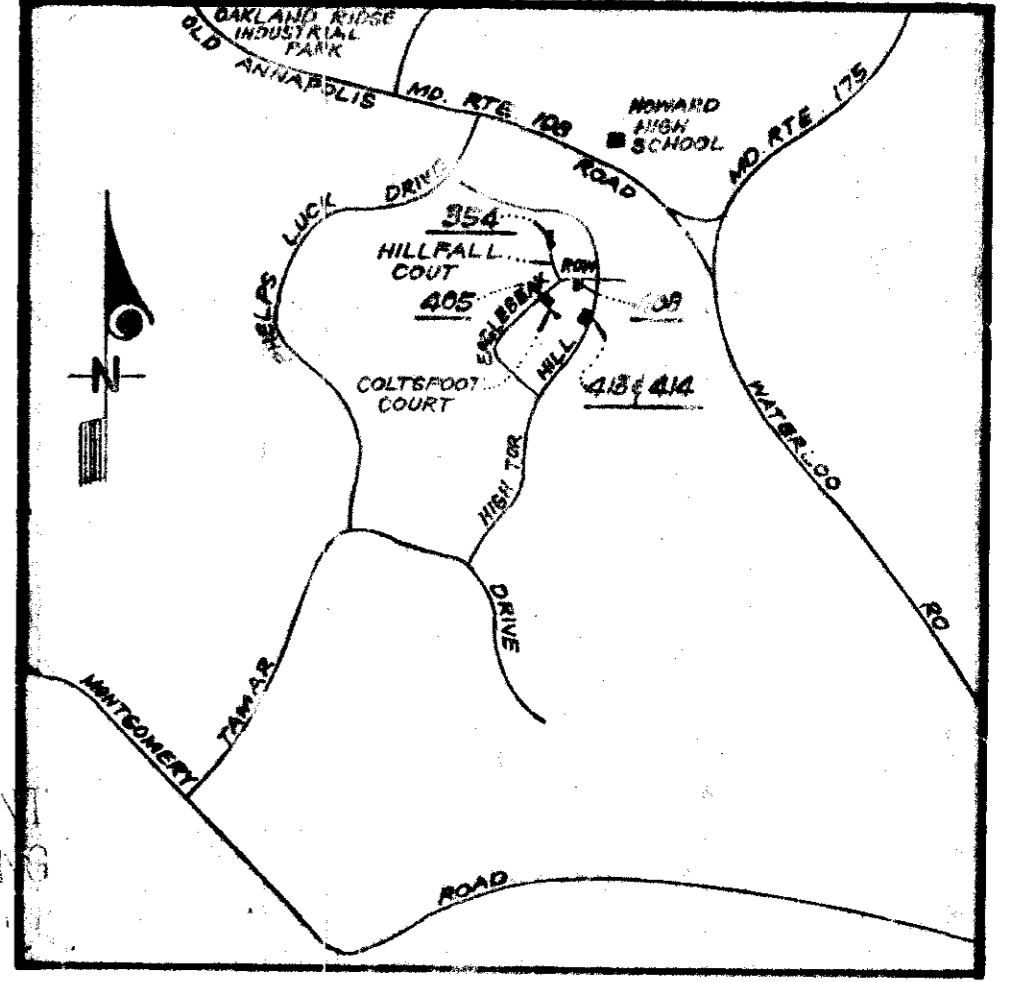
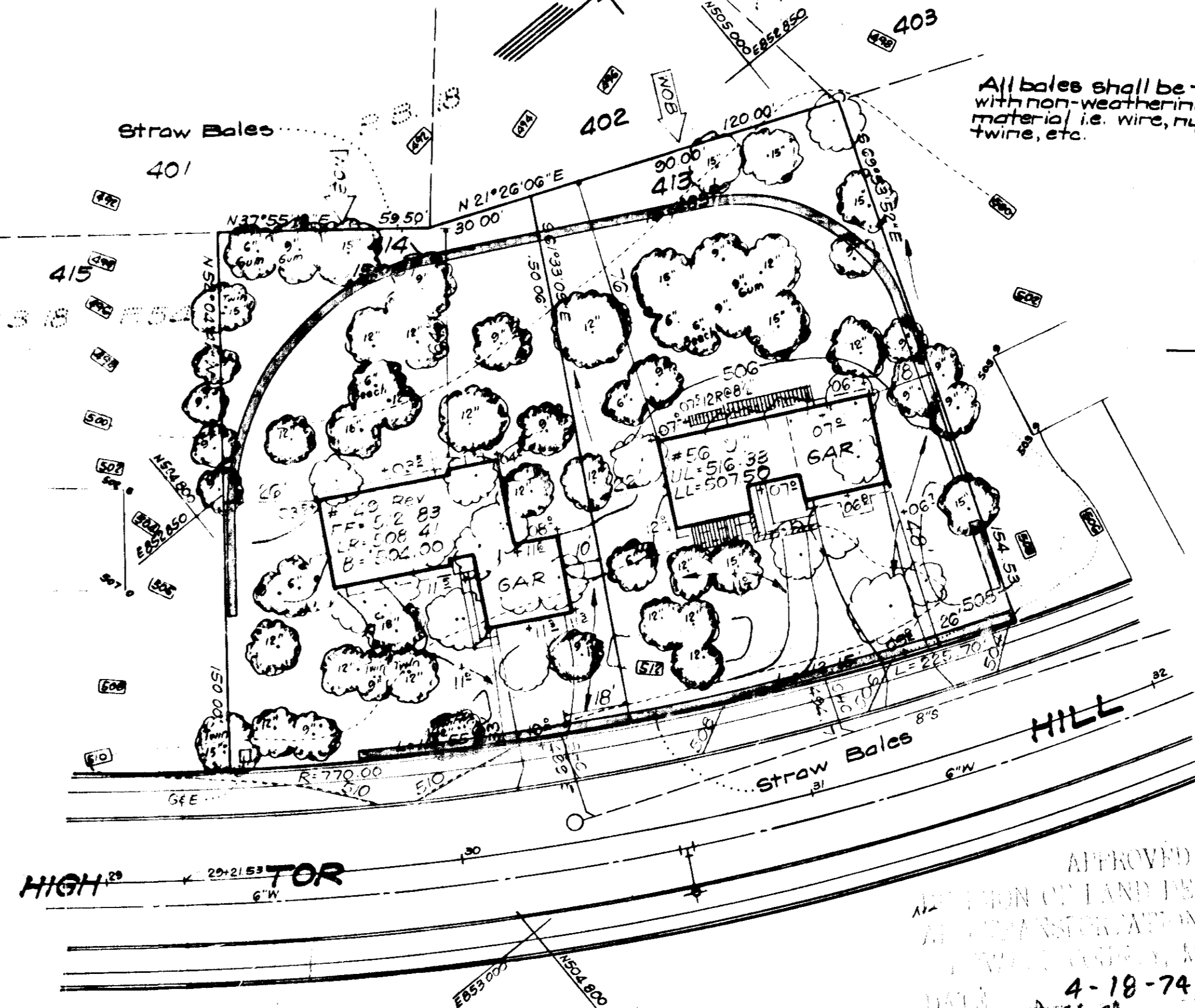
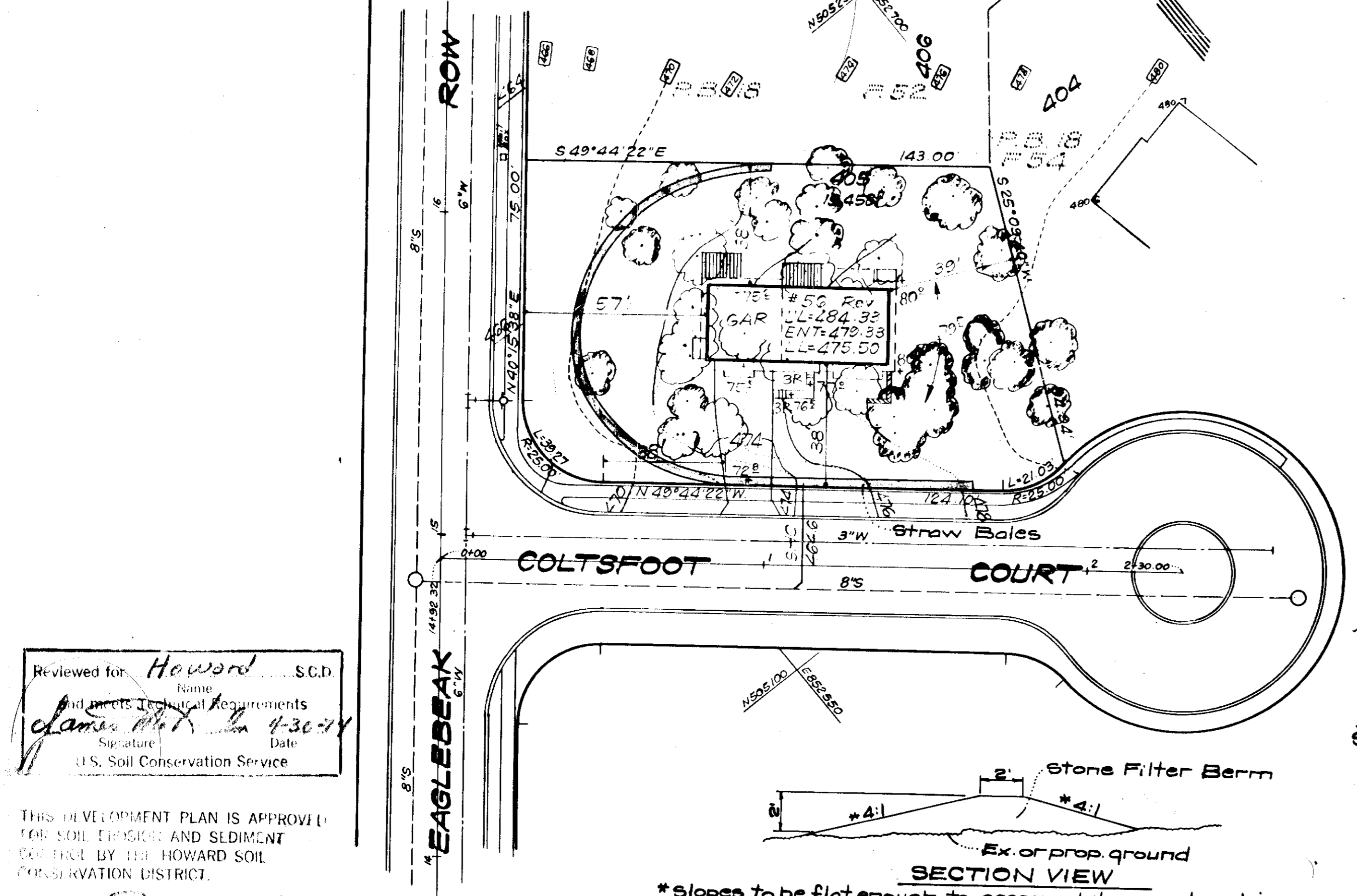
- All Sediment and Erosion Control Measures will be installed and stabilized according to this plan prior to any other grading, clearing, or disturbance of the existing surface of the site.
- Notify the Howard Soil Conservation District at least 24 hours before starting any work.
- All Sediment Control Practices to conform to the Standards and Specifications for Soil Erosion and Sediment Control in Urbanizing Areas and shall be adjusted to meet actual field conditions.
- Stabilization of disturbed ground to be done as soon after construction as possible.
- Stone filter berms shall be used at construction entrances to lots in lieu of straw bales where shown on plans.
- All graded areas shall be treated in accordance with the following Specifications:
 - Seed-certified 85% germination applied at the rate of 31lbs./1000 sq. ft. mixture - 40% Kentucky Blue, 20% Chewung Fescue, 20% Kentucky 31, and 20% Annual Ryegrass.
 - Fertilizer - 5-10-10 applied at the rate of 23 lbs./1000 sq. ft. and ground agricultural lime or dolomitic lime applied at the rate of 46 lbs./1000 sq. ft.
 - Mulch - Weed free grain straw applied at the rate of 70 lbs./1000 sq. ft. Mulch shall be secured to the ground by any approved method, i.e. asphalt tack, chemical binder, wood chips, etc.
- All structural sediment control measures are to remain in place until permission for their removal has been obtained from the Howard Soil Conservation District, phone 465-3180 or 465-5000, ext. 328.
- Onsite inspection and maintenance of all sediment control measures including cleanout of sediment traps and berms, and proper establishment of all planned vegetative measures will be the responsibility of the Developer or his representative on the site, on a continuing day to day basis.
- Protection of stabilized lots from sediment runoff shall be provided by the use of an approved sediment control device, i.e. stone filter berm, straw bales, etc.

APPROVED: HOWARD COUNTY OFFICE OF PLANNING & ZONING
[Signature]
PLANNING DIRECTOR
DATE 6/2/74
CHIEF DIVISION OF LAND DEVELOPMENT & TRANSPORTATION PLANNING



NOTE: In lieu of the use of rebar, each straw bale may be fastened to ground with pegs (4 per bale) & nylon twine as shown above.

TYPICAL STRAW BALE DETAIL
No Scale

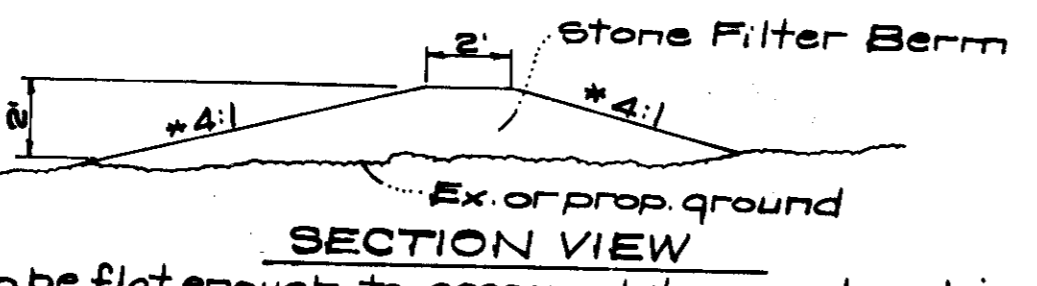


VICINITY MAP
Scale: 1" = 2000'

Reviewed for Howard S.C.D.
[Signature]
Date 4-30-74
U.S. Soil Conservation Service

THIS DEVELOPMENT PLAN IS APPROVED FOR SOIL EROSION AND SEDIMENT CONTROL BY THE HOWARD SOIL CONSERVATION DISTRICT.

Approved [Signature] Date 4-30-74



*slopes to be flat enough to accommodate construction vehicles without damaging berm & shall be placed at each construction entrance.
NOTE: stone shall be 4" to 6" Surge Stone.
STONE FILTER BERM DETAIL
No Scale

PLAN
Scale: 1" = 30'

DEVELOPER'S CERTIFICATE
I certify that all development and construction will be done according to the plan and plan for Erosion and Sediment Control and I also authorize professional agents by the Howard Soil Conservation District to act as authorized agents as are shown hereon. Deviation from this plan will not be made unless authorized by the Howard Soil Conservation District.
Date 2-20-74 [Signature] Louis O'Leary

ENGINEER'S CERTIFICATE
I hereby certify that this plan for Erosion and Sediment Control represents a practical and workable plan based on my personal knowledge of the site conditions and that it was prepared in accordance with the requirements of the Howard Soil Conservation District.
Date 2-20-74 [Signature] G. Nelson Clark



CLARK • PINEFROCK & SACKETT ENGINEERS • PLANNERS • SURVEYORS		
DESIGNED	R.J.C.	SEDIMENT & EROSION CONTROL PLAN
DRAWN	R.J.C.	LOTS 354, 405, 406, 413 AND 414
CHECKED	G.N.C.	COLUMBIA
DATE	FEB, 1974	VILLAGE OF LONGREACH
		SECTION I AREA I
		6TH ELECTION DISTRICT
		HOWARD COUNTY, MARYLAND
		FOR: RESEARCH HOMES, INC.
		7777 Leesburg Pike
		Falls Church, Va. 22043
SCALE	AS SHOWN	
DRAWING	1051	
JOB NO.		
FILE NO.	12345	