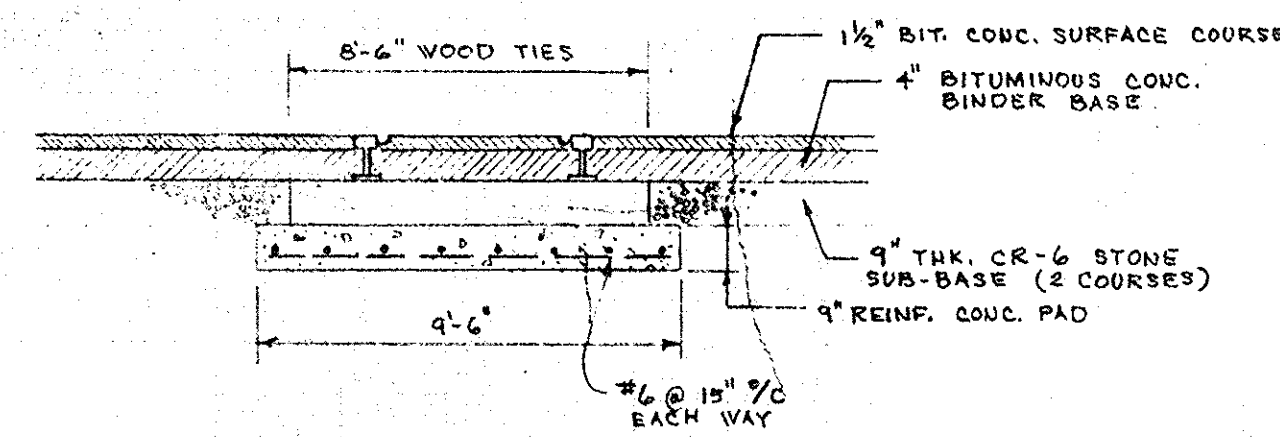
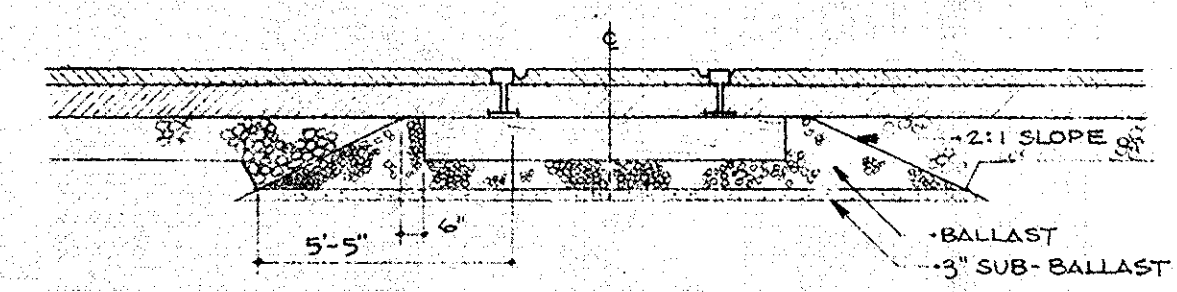


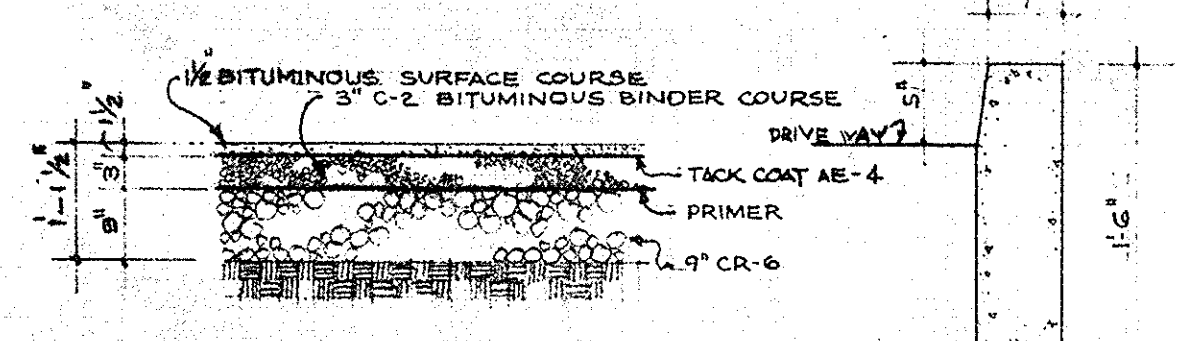
NOTE:  
SEE SPECIFICATIONS FOR  
RAIL AND TIE DATA.



DETAIL OF R.R. IN PAVED AREAS  
ABOVE PIPE CROSSING  
NO SCALE



TYPICAL R.R. SIDING IN PAVED AREAS  
NO SCALE



DRIVE WAY & PARKING  
PAVING DET'L  
1/2" = 1'-0"

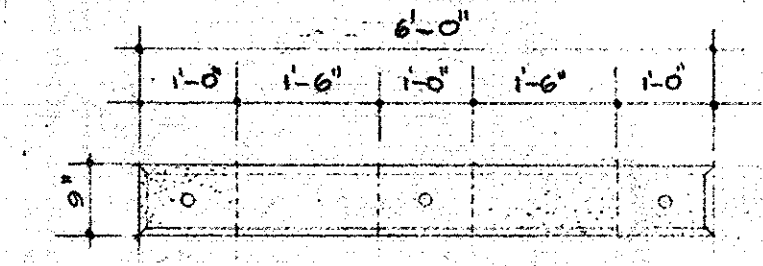
CONC. BARRIER CURB DETAIL  
SCALE: 3/4" = 1'-0"

NOTE:  
ALL STD. 7" COMB. CURB & GUTTER  
SHALL BE IN ACCORDANCE WITH DRAWING  
D-40, PAGE 95 OF HOWARD COUNTY ROAD  
CONSTRUCTION CODE.

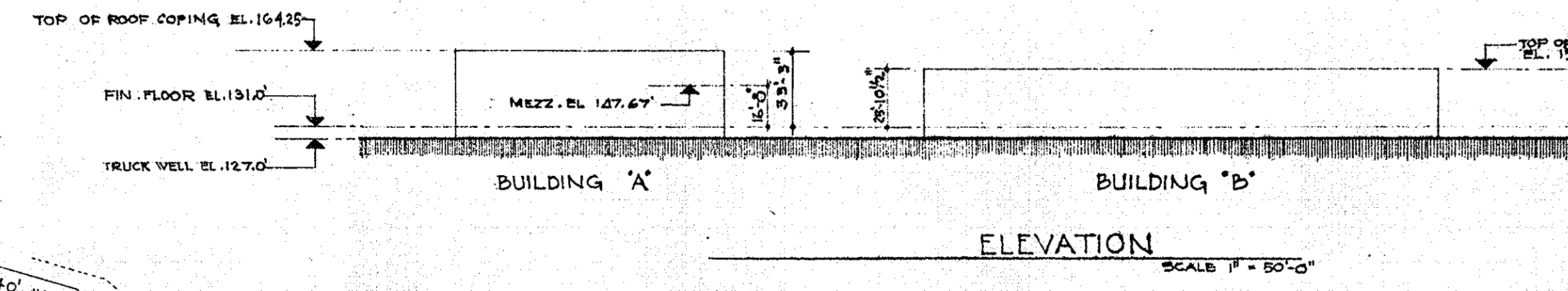
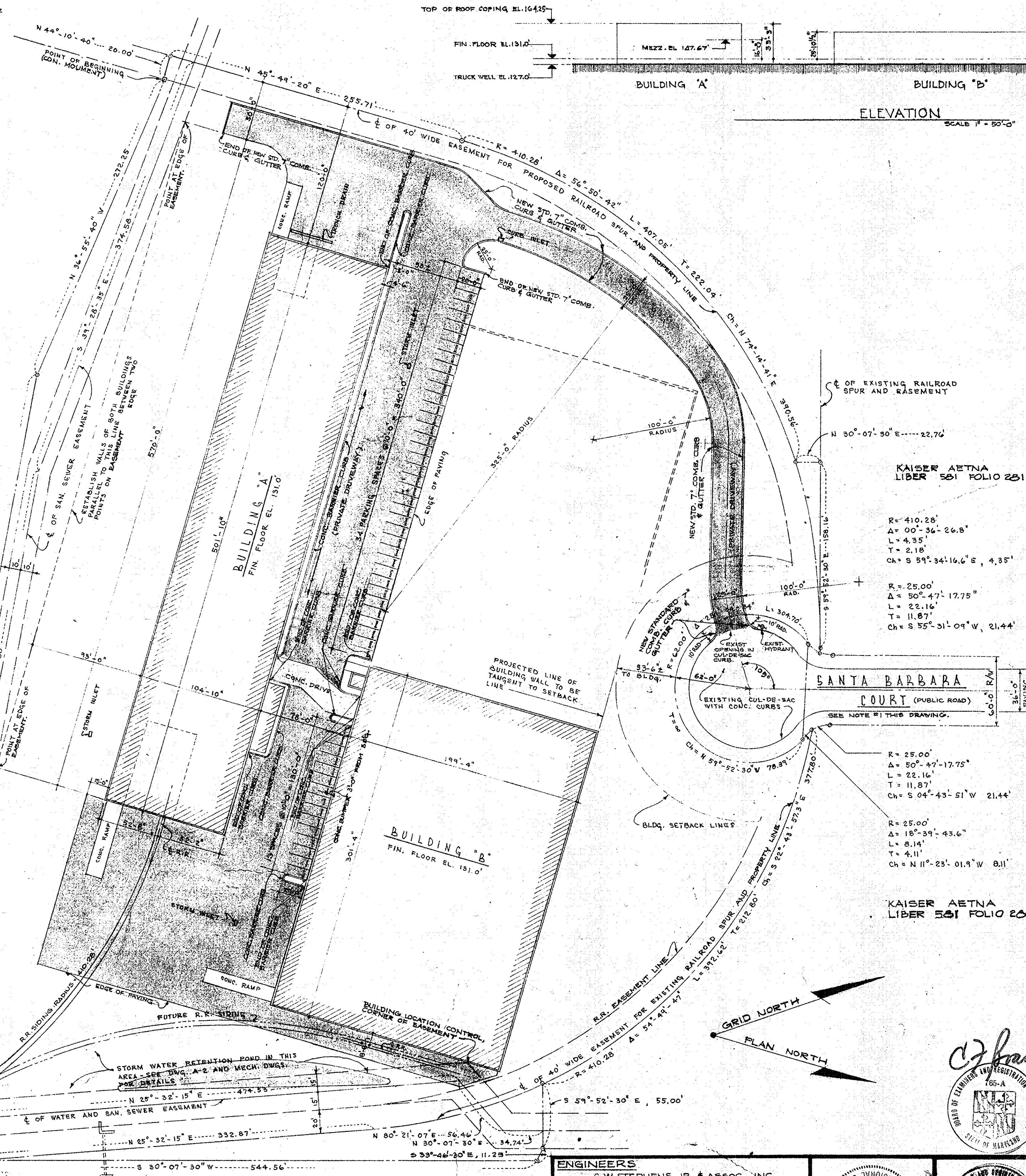
NOTES:

- AREA IS PORTION OF TAX MAP NO. 37.
- COVERAGE REQUIRED - 50% MAX.  
COVERAGE PROVIDED - 21%  
POSSIBLE FUTURE COVERAGE - 41.5%
- SANTA BARBARA COURT RECORDED IN PLAT BOOK 25 FOLIO 62 AMONG THE LAND RECORDS OF HOWARD CO., MD.
- OFF-STREET PARKING  
REQD.: 1 PARKING SPACE FOR TWO EMPLOYEES  
BLDG. "A" = 14 EMPLOYEES PER SHIFT  
BLDG. "B" = 35 EMPLOYEES PER SHIFT  
TOTAL EMPLOYEES 47 PER SHIFT  
PARKING SPACES REQD. = 24  
PARKING SPACES PROVIDED 47
- SITE ANALYSIS  
DEEP PROF. 12.10 ACRES  
QUIT CLAIM PROP. 1,997 ACRES  
TOTAL 13,777 ACRES
- PRES. ZONING M-2
- TOTAL NUMBER OF EMPLOYEES  
ON THREE SHIFTS = 140  
ON ONE SHIFT = 47
- BLDG. "A" GROUND FLOOR = 52,500 SQ. FT.  
BLDG. "A" MEZZANINE = 17,000 SQ. FT.  
BLDG. "B" GROUND FLOOR = 60,000 SQ. FT.  
BLDG. "B" MEZZANINE = 9,012 SQ. FT.
- SALES AREA - NONE

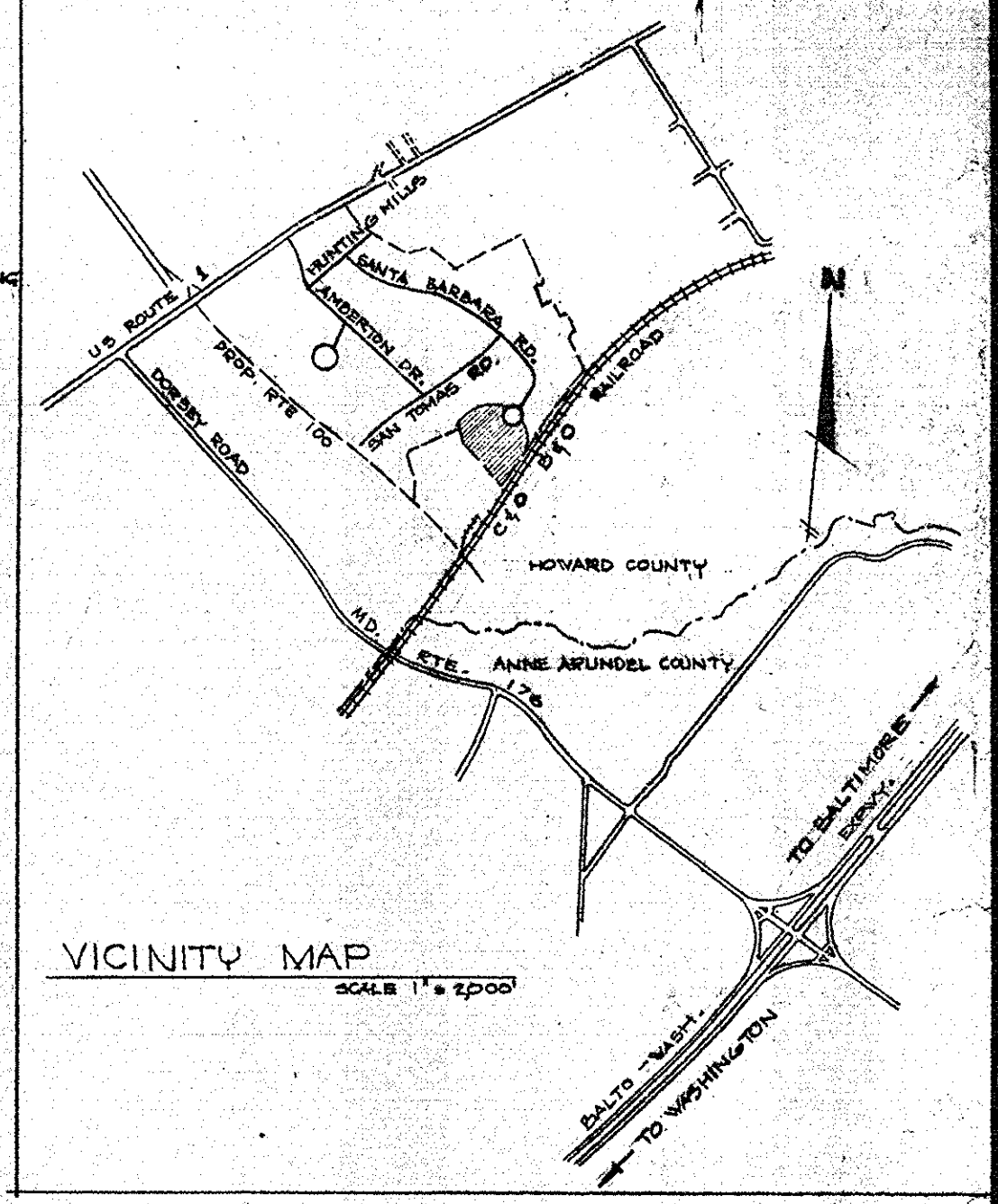
EPPERLEY REALTY CORP.  
LIBER 300 FOLIO 141



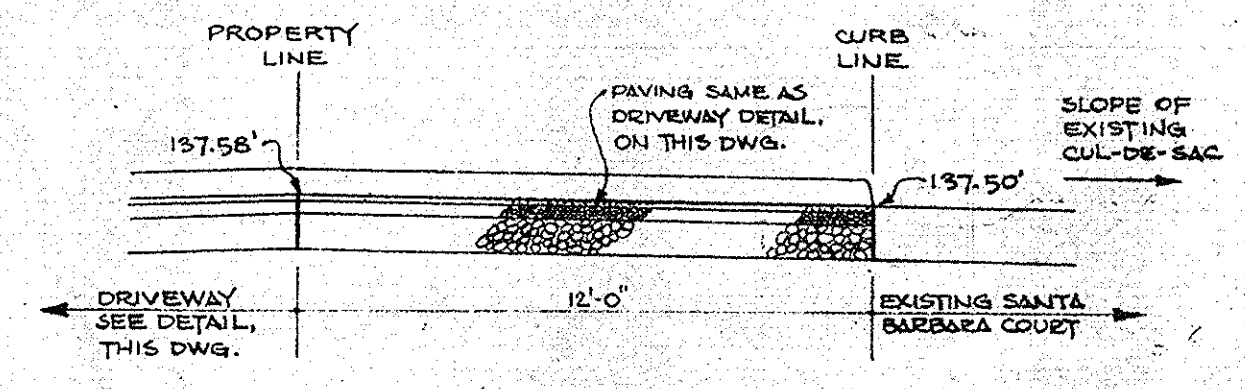
CONC. BUMPER DET'L  
SCALE 1/2" = 1'-0"



ELEVATION  
SCALE 1" = 50'-0"



VICINITY MAP  
SCALE 1" = 1/4" MI.



DRIVEWAY ENTRANCE DETAIL  
1/4" = 1'-0"

KAISER AETNA  
LIBER 501 FOLIO 251

R = 410.28'  
Δ = 00°-36'-26.8"  
L = 4.35'  
T = 2.18'  
Ch = S 59°-34'-16.6" E, 4.35'

R = 25.00'  
Δ = 50°-47'-17.75"  
L = 22.16'  
T = 11.87'  
Ch = S 04°-43'-51" W, 21.44'

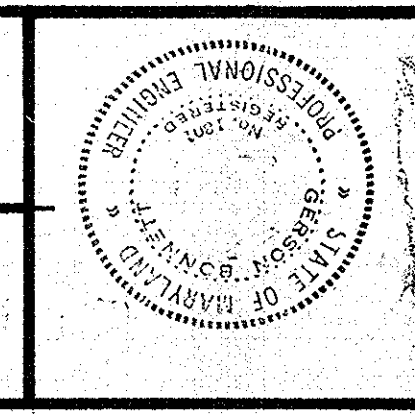
R = 25.00'  
Δ = 18°-39'-43.6"  
L = 8.14'  
T = 4.11'  
Ch = N 11°-23'-01.9" W, 8.11'

KAISER AETNA  
LIBER 501 FOLIO 251

APPROVED  
DIVISION OF LAND DEVELOPMENT  
AND TRANSPORTATION PLANNING  
HOWARD COUNTY, MARYLAND  
DATE 2-25-74  
*J. H. Clawson*

LEGEND	
---	PROPERTY LINE
---	EASEMENT AND SETBACK LINE
---	Δ OF EASEMENTS AND PROPERTY LINE, WHERE SO NOTED
APPROVED FOR PUBLIC WATER AND PUBLIC SEWERAGE SYSTEMS HOWARD COUNTY HEALTH DEPARTMENT	
<i>R. B. F...</i>	DATE 3/1/74
APPROVED HOWARD COUNTY OFFICE OF PLANNING AND ZONING	
<i>Thomas H. Harris</i>	DATE 3-14-74
CHIEF, DIVISION OF LAND DEVELOPMENT AND TRANSPORTATION PLANNING	
APPROVED FOR PUBLIC WATER, PUBLIC SEWERAGE AND STORM DRAINAGE SYSTEMS AND ROADS HOWARD COUNTY DEPARTMENT OF PUBLIC WORKS	
<i>W. J. A. Adams</i>	DATE 3/1/74
<i>D. M. H. Sheward</i>	DATE 3/16/74
CHIEF, BUREAU OF HIGHWAYS	

ENGINEERS  
G.W. STEPHENS, JR. & ASSOC., INC.  
303 ALLEGHENY AVENUE,  
TOWSON, MARYLAND 21284  
(301) 825-8120

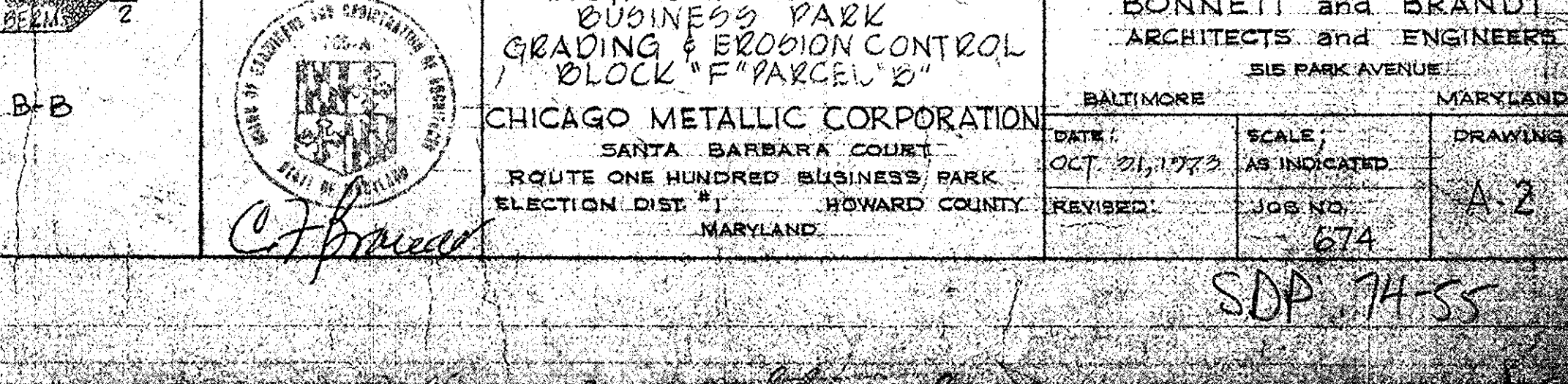
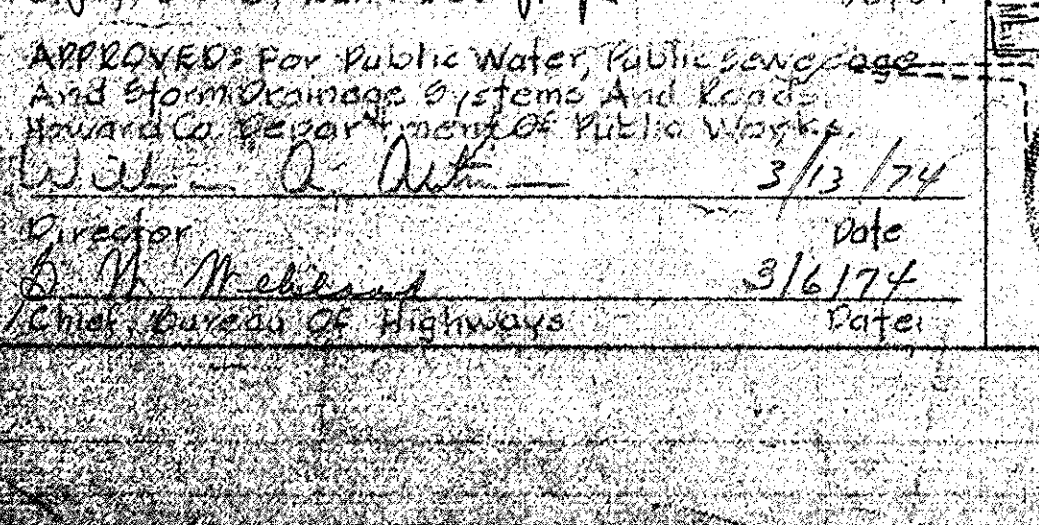
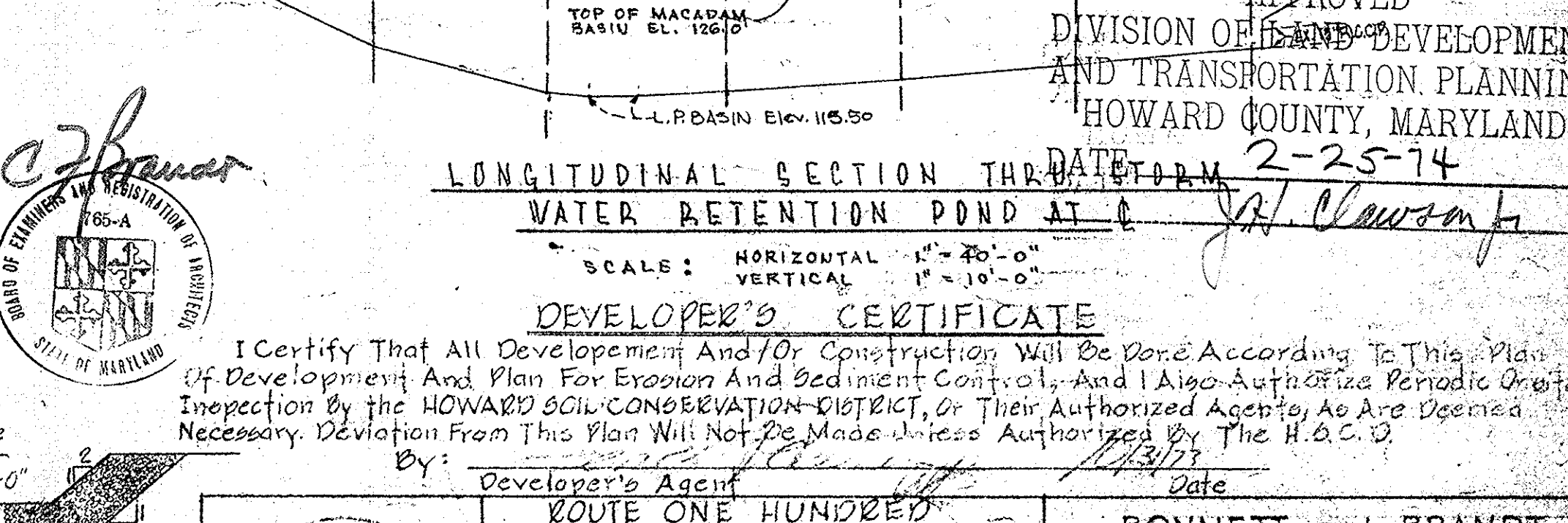
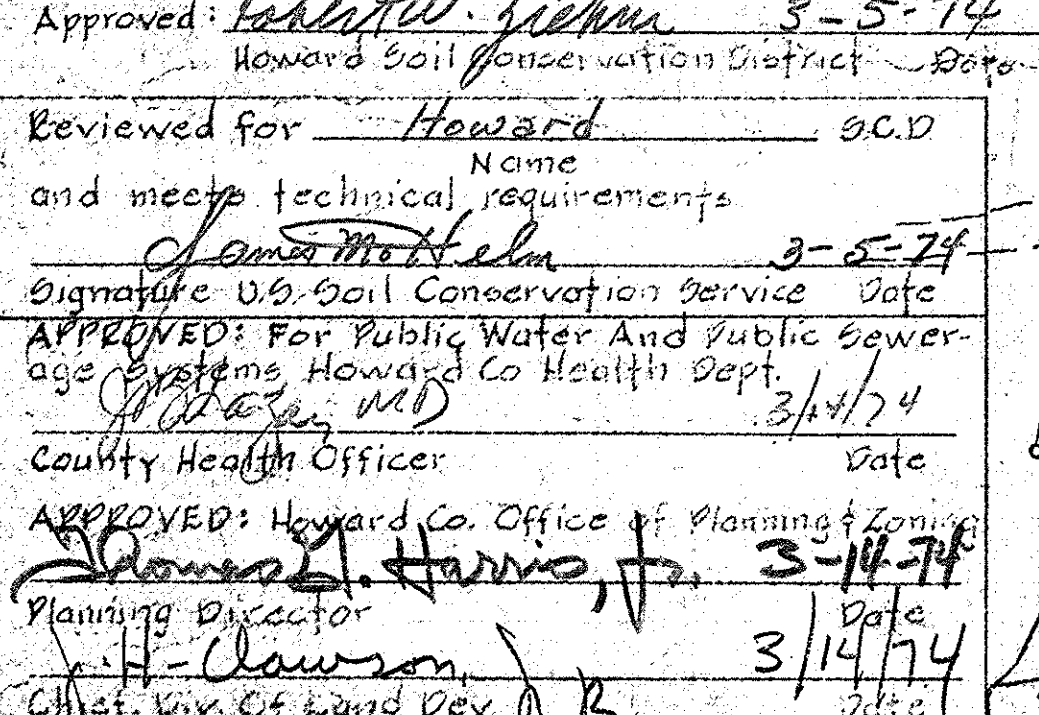
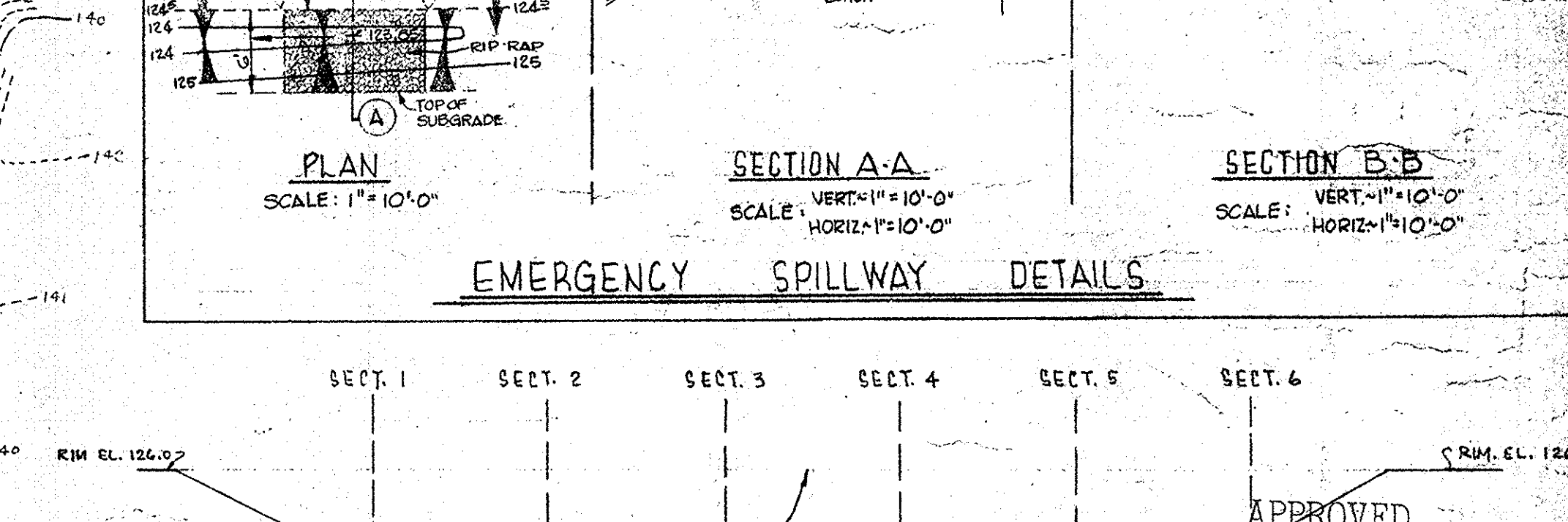
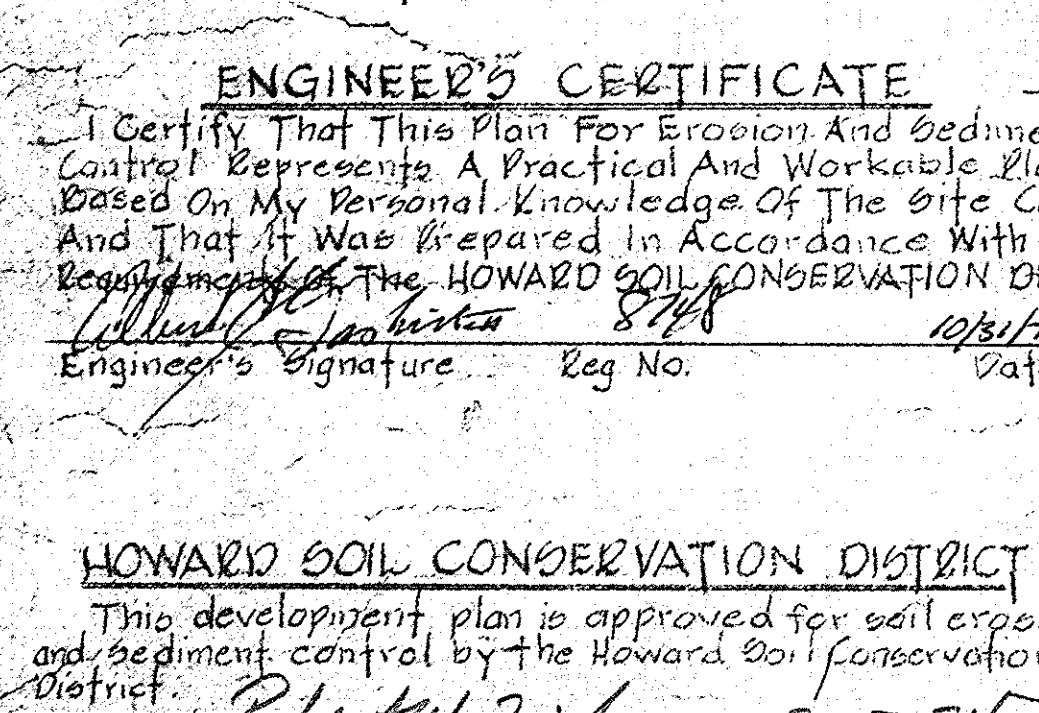
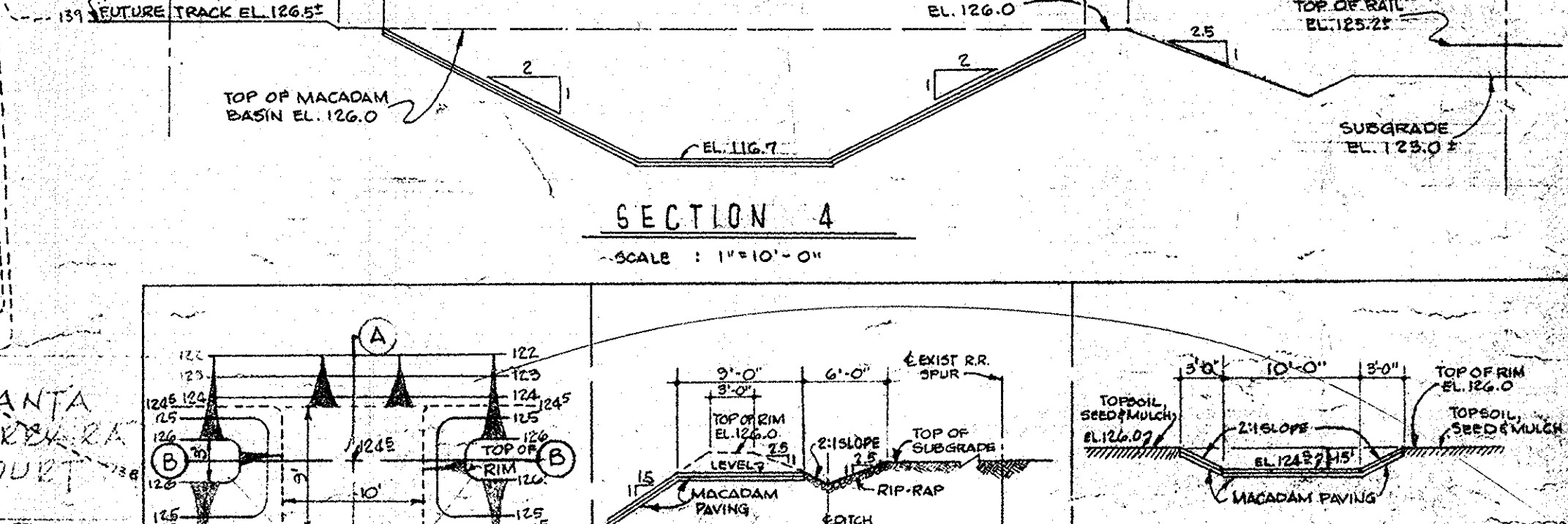
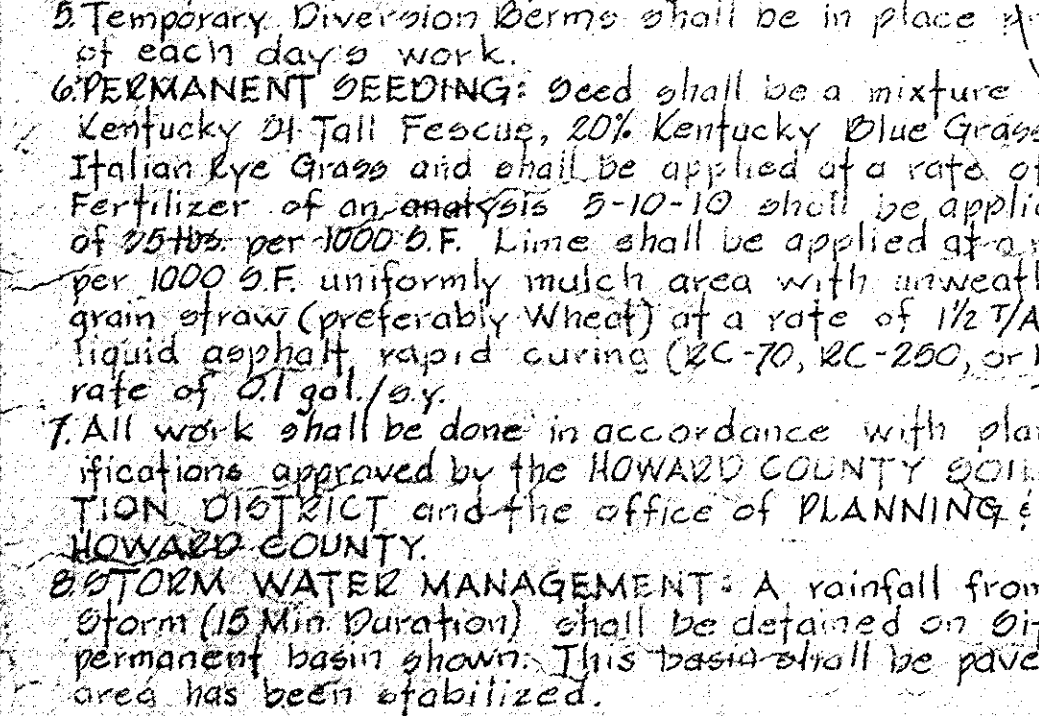
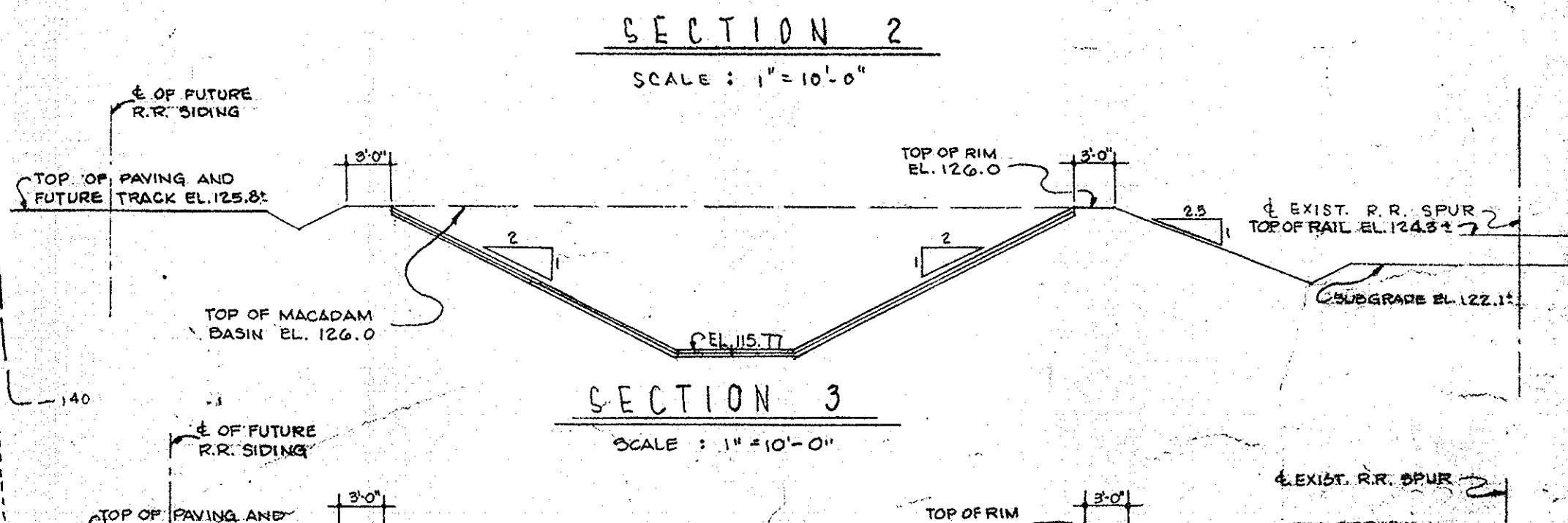
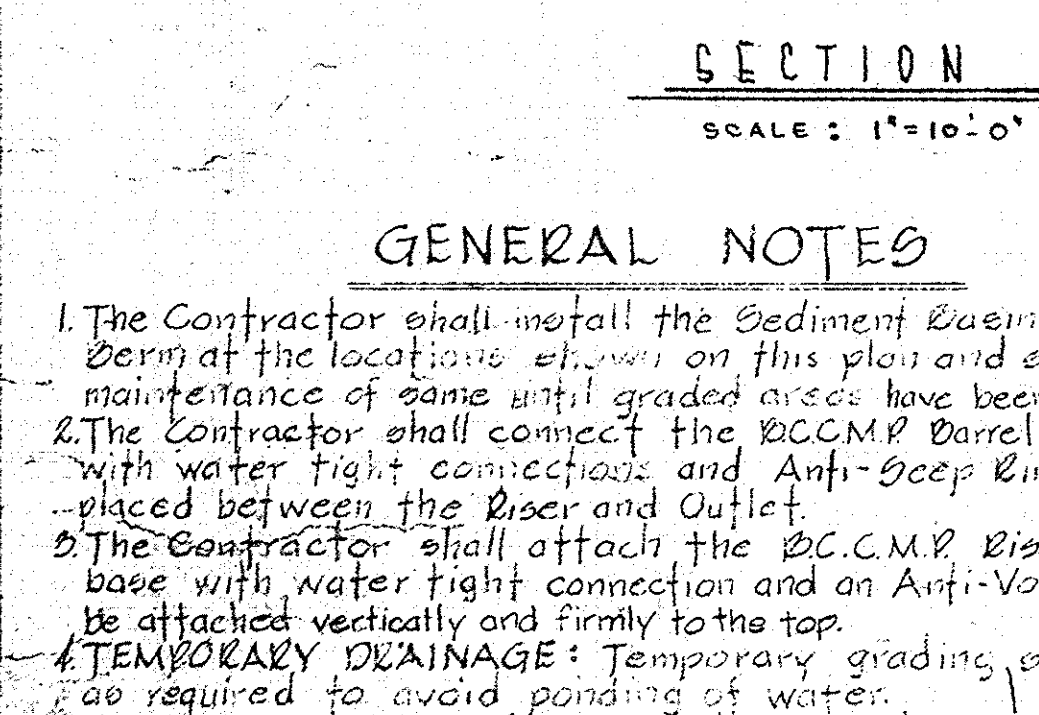
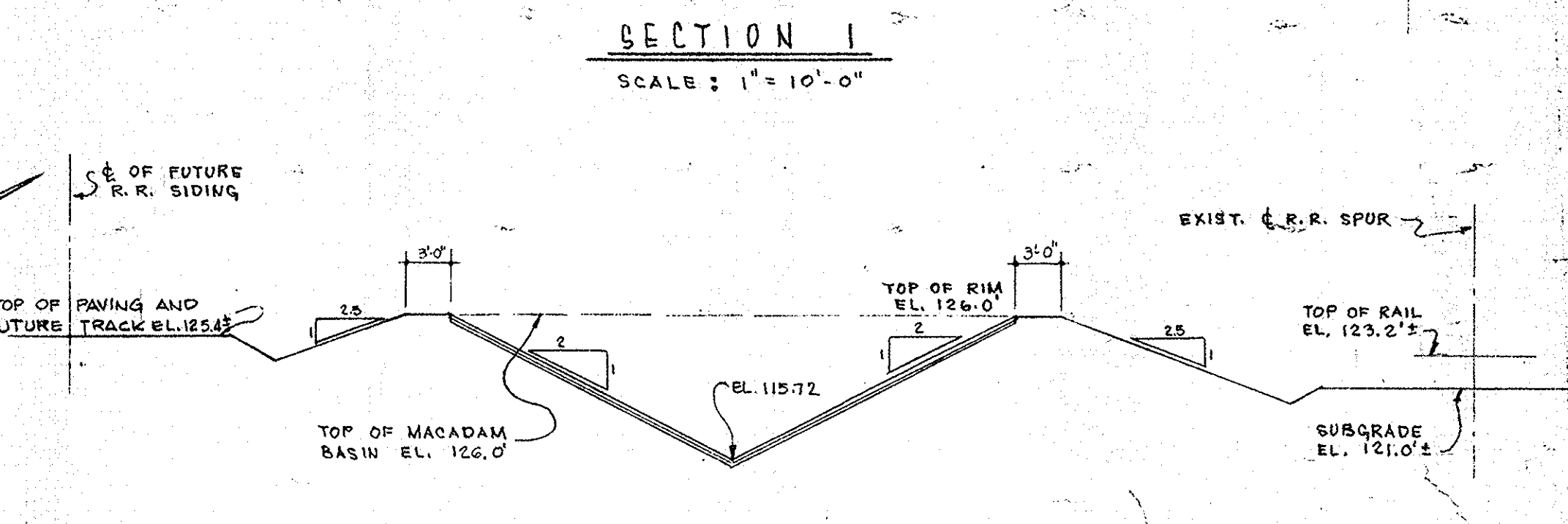
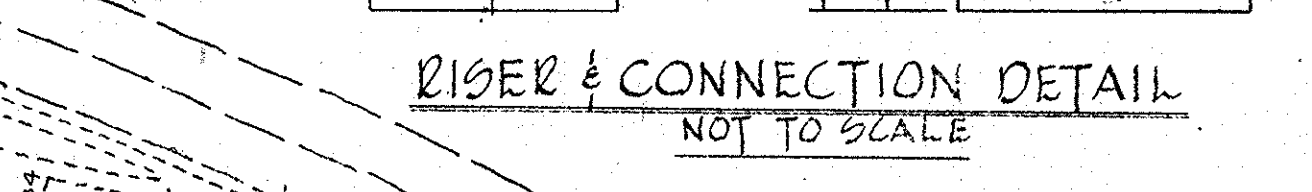
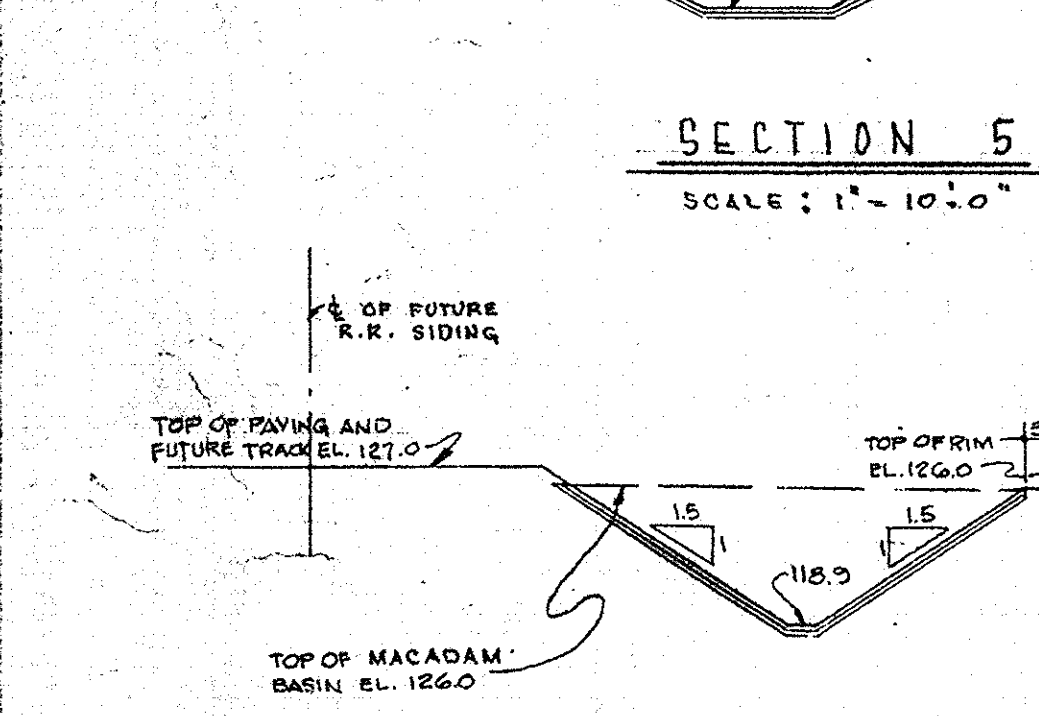
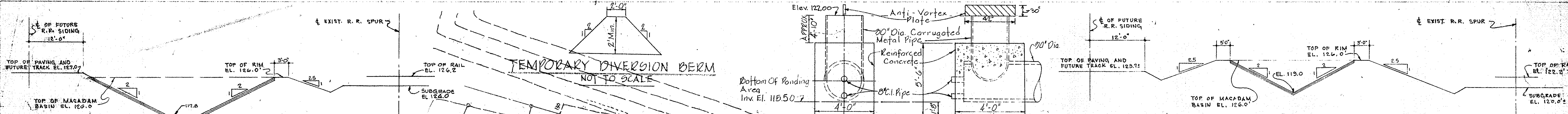


MANUFACTURING BUILDINGS  
FOR  
CHICAGO METALLIC CORPORATION  
SANTA BARBARA COURT  
ROUTE ONE HUNDRED BUSINESS PARK  
ELECTION DIST. #1 HOWARD COUNTY,  
MARYLAND

BONNETT and BRANDT  
ARCHITECTS and ENGINEERS  
515 PARK AVENUE  
BALTIMORE MARYLAND  
DATE: 11-2-73  
SCALE: AS NOTED  
JOB NO. 674  
DRAWING A-1

SITE PLAN

SCALE 1" = 50'-0"



**GENERAL NOTES**

- The Contractor shall install the Sediment Basin and Bleeder Berm at the locations shown on this plan and shall provide maintenance of same until graded areas have been established.
- The Contractor shall connect the D.C.C.M.P. Barrel to the Riser with water tight connections and Anti-Seep Rings shall be placed between the Riser and Outlet.
- The Contractor shall attach the D.C.C.M.P. Riser to a concrete base with water tight connection and an Anti-Vortex Plate shall be attached vertically and firmly to the top.
- TEMPORARY DRAINAGE:** Temporary grading shall be performed as required to avoid ponding of water.
- Temporary Diversion Berms shall be in place prior to the end of each day's work.
- PERMANENT SEEDING:** Seed shall be a mixture of 70% of Kentucky 31 Tall Fescue, 20% Kentucky Blue Grass and 10% Italian Ryegrass and shall be applied at a rate of 60 lbs. per acre. Fertilizer of an analysis 5-10-10 shall be applied at a rate of 25 lbs. per 1000 S.F. Lime shall be applied at a rate of 60 lbs. per 1000 S.F. uniformly mulch area with unweathered 1/2" grain straw (preferably Wheat) at a rate of 1 1/2 T/Ac. Anchor with liquid asphalt, rapid curing (AC-70, AC-200, or AC-2000) at a rate of 2 1/2 gal./sq. yd.
- All work shall be done in accordance with plans and specifications approved by the HOWARD COUNTY SOIL CONSERVATION DISTRICT and the office of PLANNING & ZONING of HOWARD COUNTY.
- STORM WATER MANAGEMENT:** A rainfall from a 2 year storm (15 Min. Duration) shall be detained on site in the permanent basin shown. This basin shall be paved after the area has been stabilized.

**ENGINEER'S CERTIFICATE**

I Certify That This Plan For Erosion And Sediment Control Represents A Practical And Workable Plan Based On My Personal Knowledge Of The Site Conditions And That It Was Prepared In Accordance With The Requirements Of THE HOWARD SOIL CONSERVATION DISTRICT.

*William J. Johnson* 8/14  
 Engineer's Signature Reg. No. 10/31/73  
 Date

**HOWARD SOIL CONSERVATION DISTRICT**

This development plan is approved for soil erosion and sediment control by the Howard Soil Conservation District.

Approved: *Robert W. Zichem* 3-5-74  
 Howard Soil Conservation District Date

Reviewed for Howard O.C.D. Name and meet technical requirements

*James M. Hahn* 3-5-74  
 Signature U.S. Soil Conservation Service Date

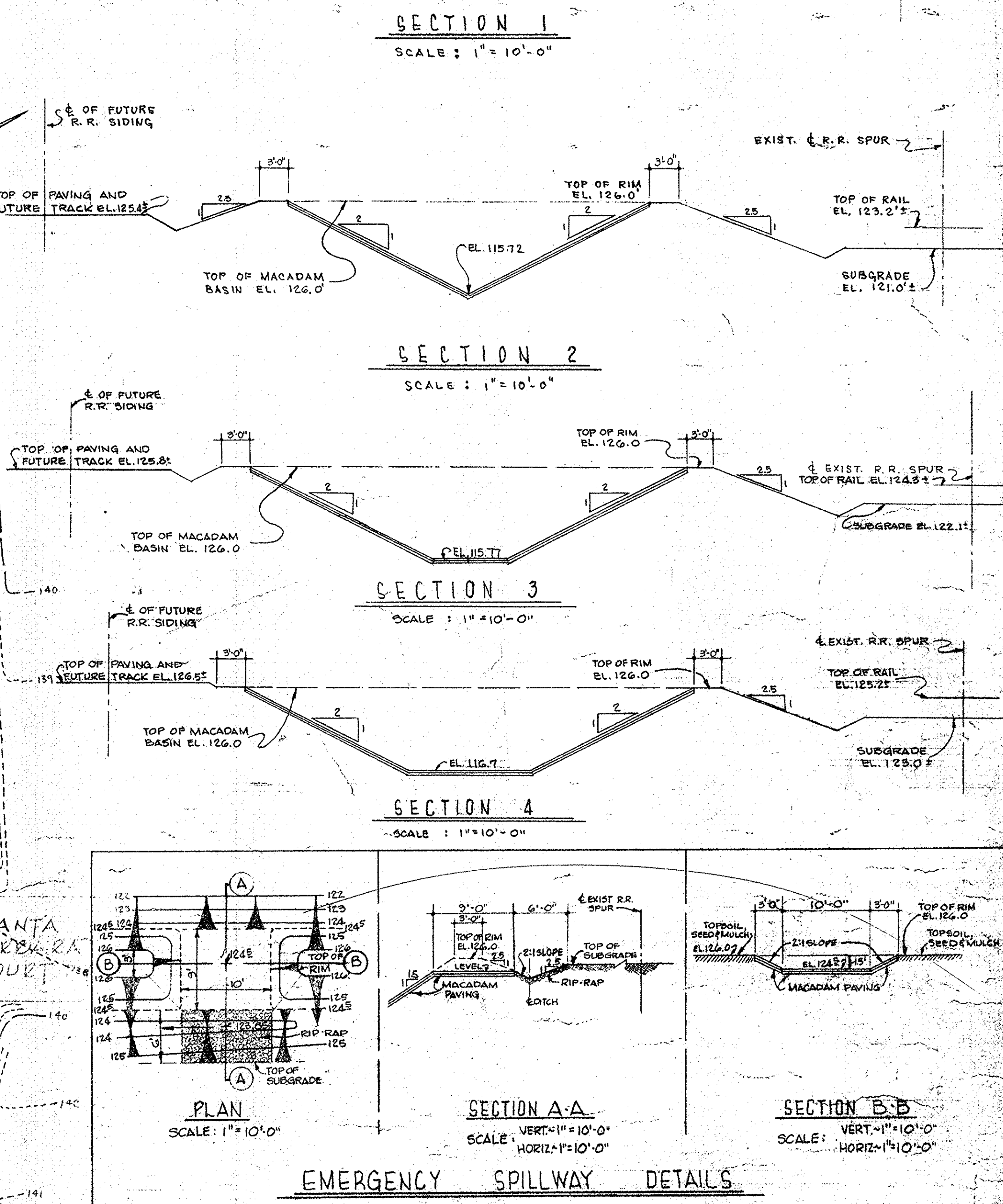
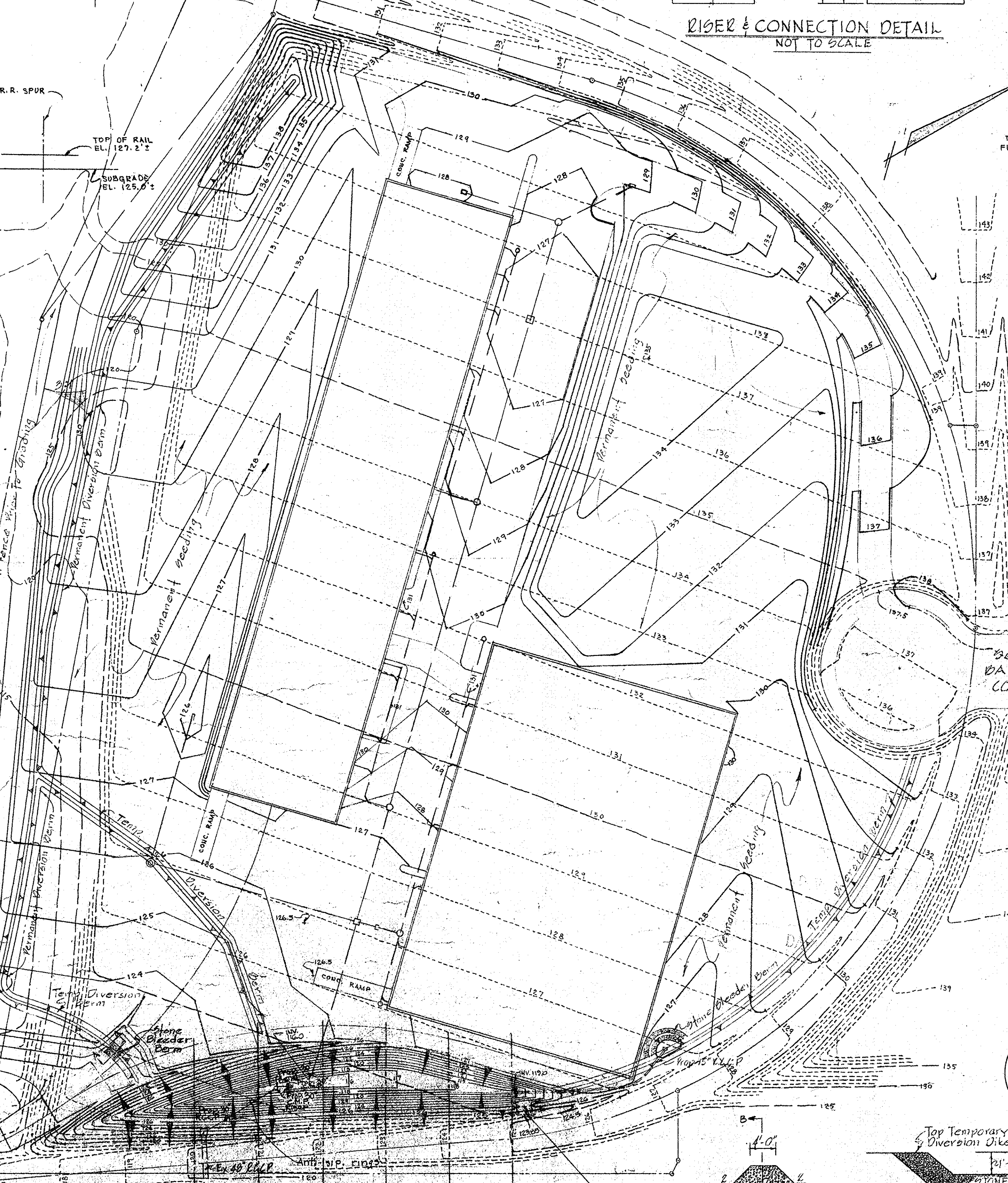
APPROVED: For Public Water And Public Sewerage Systems Howard Co Health Dept.  
*W. H. ...* 3/14/74  
 County Health Officer Date

APPROVED: Howard Co. Office of Planning & Zoning  
*James J. Harris, Jr.* 3-14-74  
 Planning Director Date

*H. J. ...* 3/14/74  
 Chief, Div. Of Land Dev. Date

APPROVED: For Public Water, Public Sewerage And Storm Drainage Systems And Roads Howard Co. Department of Public Works.  
*William A. ...* 3/13/74  
 Director Date

*D. M. ...* 3/16/74  
 Chief, Bureau Of Highways Date



**LONGITUDINAL SECTION THROUGH WATER RETENTION POND AT**

SCALE: HORIZONTAL 1" = 20'-0" VERTICAL 1" = 3'-0"

APPROVED  
 DIVISION OF PLANNING AND TRANSPORTATION PLANNING  
 HOWARD COUNTY, MARYLAND  
 DATE FORM 2-25-74  
*H. J. ...*

**DEVELOPER'S CERTIFICATE**

I Certify That All Development And/Or Construction Will Be Done According To This Plan Of Development And Plan For Erosion And Sediment Control, And I Agree To Accept Periodic On-site Inspection By THE HOWARD SOIL CONSERVATION DISTRICT, Or Their Authorized Agents, As Are Deemed Necessary. Deviation From This Plan Will Not Be Made Unless Authorized By THE H.S.C.D.

By: *William J. Johnson* 10/31/73  
 Developer's Agent Date

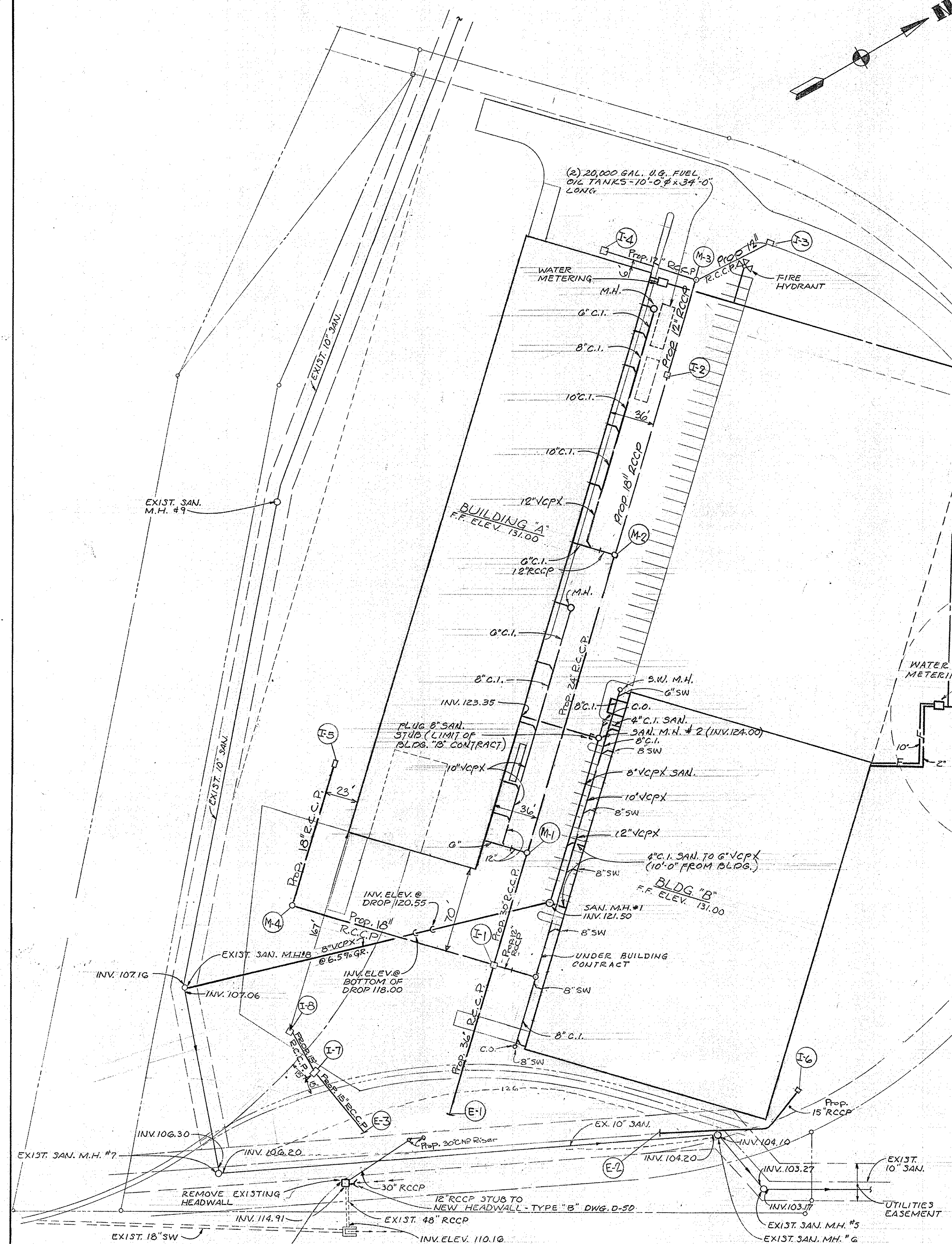
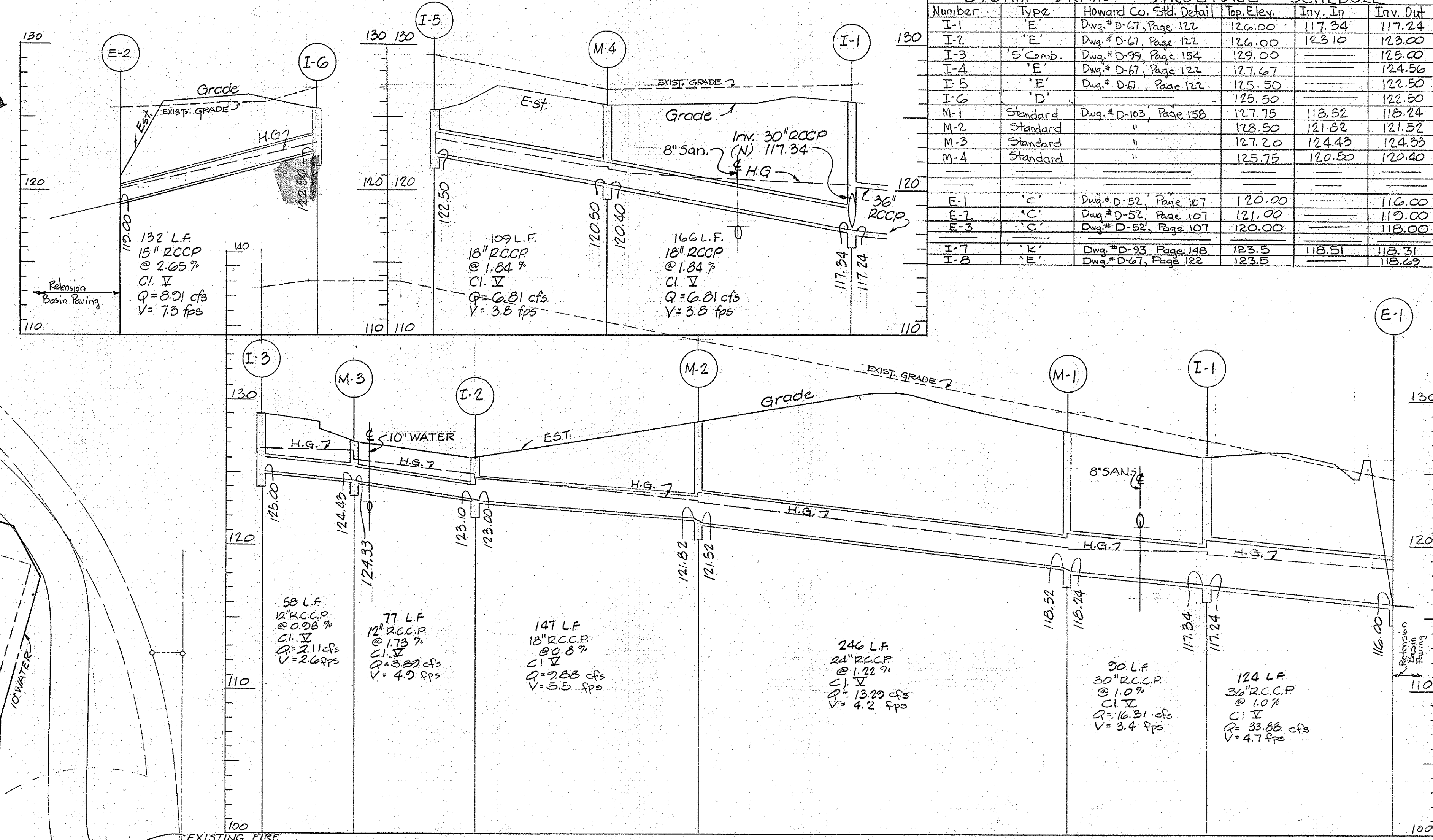
**BONNETT and BRANDT ARCHITECTS and ENGINEERS**  
 BALTIMORE MARYLAND

**CHICAGO METALLIC CORPORATION**  
 SANTA BARBARA COURT  
 ROUTE ONE HUNDRED BUSINESS PARK  
 ELECTION DIST. #1 HOWARD COUNTY MARYLAND.

DATE: OCT. 31, 1973  
 SCALE: AS INDICATED  
 DRAWING: A-2  
 JOB NO. 674

SDP 74-55

STORM DRAIN		STRUCTURE		SCHEDULE	
Number	Type	Howard Co. Std. Detail	Top Elev.	Inv. In	Inv. Out
I-1	'E'	Dwg. # D-67, Page 122	126.00	117.34	117.24
I-2	'E'	Dwg. # D-67, Page 122	126.00	123.10	123.00
I-3	'S' Comp.	Dwg. # D-99, Page 154	129.00		123.00
I-4	'E'	Dwg. # D-67, Page 122	127.67		124.56
I-5	'E'	Dwg. # D-67, Page 122	125.50		122.50
I-6	'D'		125.50		122.50
M-1	Standard	Dwg. # D-103, Page 158	127.75	118.52	118.24
M-2	Standard		128.50	121.52	121.52
M-3	Standard		127.20	124.43	124.33
M-4	Standard		125.75	120.50	120.40
E-1	'C'	Dwg. # D-52, Page 107	120.00		116.00
E-2	'C'	Dwg. # D-52, Page 107	121.00		119.00
E-3	'C'	Dwg. # D-52, Page 107	120.00		118.00
I-7	'E'	Dwg. # D-93, Page 148	123.5	118.51	118.31
I-8	'E'	Dwg. # D-67, Page 122	123.5		118.69

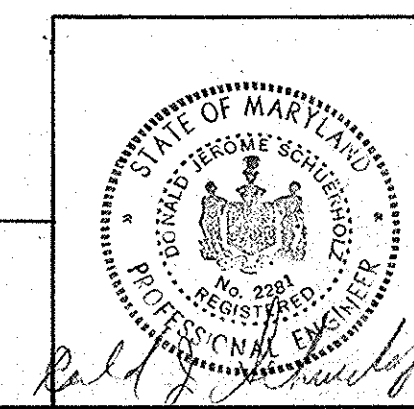


PROFILES  
Scale: 1"=50' Hor.  
1"=5' Vert.

LEGEND  
 — SANITARY; SAN.  
 — STORM WATER; SW.  
 — CLEANOUT; CO.  
 — WATER

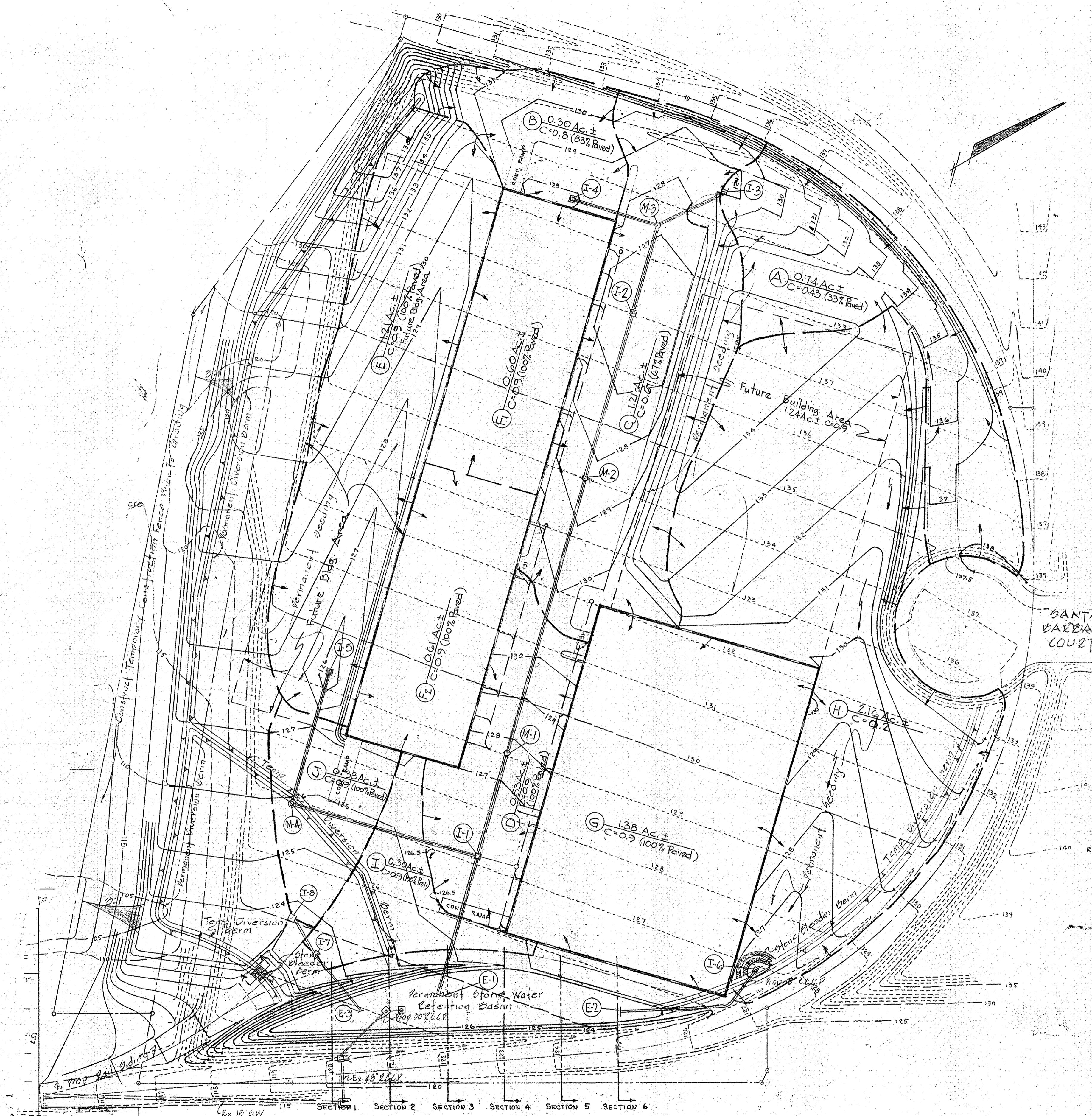
APPROVED FOR: PUBLIC WATER AND PUBLIC SEWERAGE SYSTEMS, HOWARD COUNTY HEALTH DEPARTMENT  
 COUNTY HEALTH OFFICER: [Signature] DATE: 3/14/74  
 APPROVED: HOWARD COUNTY OFFICE OF PLANNING AND ZONING  
 PLANNING DIRECTOR: [Signature] DATE: 3/14/74  
 CHIEF, DIVISION OF LAND DEVELOPMENT AND TRANSPORTATION PLANNING  
 APPROVED FOR: PUBLIC WATER, PUBLIC SEWERAGE AND STORM DRAINAGE SYSTEMS AND ROADS  
 HOWARD COUNTY DEPARTMENT OF PUBLIC WORKS  
 DIRECTOR: [Signature] DATE: 3/15/74  
 CHIEF, BUREAU OF HIGHWAYS: [Signature] DATE: 3/6/74

APPROVED  
 DIVISION OF LAND DEVELOPMENT AND TRANSPORTATION PLANNING  
 HOWARD COUNTY, MARYLAND  
 DATE: 2-25-74  
 [Signature]



MANUFACTURING BUILDINGS  
 FOR  
 CHICAGO METALLIC CORPORATION  
 SANTA BARBARA COURT  
 ROUTE ONE HUNDRED BUSINESS PARK  
 ELECTION DIST. #1 HOWARD COUNTY  
 BLOCK F MARYLAND PARCEL B

BONNETT and BRANDT  
 ARCHITECTS and ENGINEERS  
 515 PARK AVENUE  
 BALTIMORE MARYLAND  
 DATE: 11-26-73  
 SCALE: AS NOTED  
 REVISED: 12-19-73  
 JOBS NO. 674  
 DRAWING U-1



SANTA BARBARA COURT

APPROVED  
 DIVISION OF LAND DEVELOPMENT  
 AND TRANSPORTATION PLANNING  
 HOWARD COUNTY, MARYLAND  
 DATE 2-25-74  
*J.H. Clawsen*

APPROVED: FOR PUBLIC WATER AND PUBLIC SEWERAGE SYSTEMS, HOWARD COUNTY HEALTH DEPARTMENT	<i>J. H. Clawsen</i>	3/14/74
COUNTY HEALTH OFFICER		DATE
APPROVED: HOWARD COUNTY OFFICE OF PLANNING AND ZONING	<i>Thomas J. Harris, Jr.</i>	3-16-74
PLANNING DIRECTOR		DATE
CHIEF, DIVISION OF LAND DEVELOPMENT AND TRANSPORTATION PLANNING		DATE
APPROVED: FOR PUBLIC WATER, PUBLIC SEWERAGE AND STORM DRAINAGE SYSTEMS AND ROADS	<i>Wilbur A. Allen</i>	3/13/74
HOWARD COUNTY DEPARTMENT OF PUBLIC WORKS		DATE
DIRECTOR	<i>J. M. Menden</i>	3/16/74
CHIEF BUREAU OF HIGHWAYS		DATE

*Charles E. Fick #5048 1-22-74*

DRAINAGE AREA MAP  
 SCALE: 1" = 50'-0"

<b>ENGINEERS</b> G.W. STEPHENS, JR. & ASSOC., INC. 303 ALLEGHENY AVENUE TOWSON, MARYLAND 21204 (301) 825-8120		<b>MANUFACTURING BUILDINGS</b> FOR <b>CHICAGO METALLIC CORPORATION</b> SANTA BARBARA COURT ROUTE ONE HUNDRED BUSINESS PARK ELECTION DIST. #1 HOWARD COUNTY BLOCK F MARYLAND PARCEL B	<b>BONNETT and BRANDT</b> ARCHITECTS and ENGINEERS 515 PARK AVENUE BALTIMORE MARYLAND
<b>OWNER</b> CHICAGO METALLIC CORPORATION 4849 SOUTH AUSTIN AVENUE CHICAGO, ILLINOIS 60638 (312) 458-5460		DATE: 11-21-73 SCALE: AS NOTED DRAWING: U-2 REVISED: JOB NO. 674	