

SHED ELEVATION (TYPICAL)
1/4" = 1'-0"

GENERAL NOTES

- ENTIRE SITE IS EXISTING
- NO ASSOCIATIVE GRADING IS TO BE DONE ON THIS SITE (TEMPORARY PERMIT FOR ZOO HAS BEEN GRANTED) (THIS PLAN TO APPLY FOR PERMANENT PERMIT)
- NO LARGE ANIMALS EXIST ON THIS SITE. DOMESTIC ANIMALS (PONIES, DEER ETC) LIVE IN ZOO
- OWNER TO MAINTAIN WELL ESTABLISHED VEGETATIVE GROWTH COVER ON ALL WALKWAY STRIPS IN ANIMAL PEN. VEGETATIVE GROWTH COVER MIXTURE TO HAVE MAXIMUM GROWTH POTENTIAL AND MUST NOT BE HARMFUL TO ANIMALS
- SHELTERS ARE 5'-0" DEEP X 6'-4" WIDE TEX 1-11, PLYWOOD STAINED WITH SHED BOOD SHINGLES.
- TWO (2) ROADWAYS LEADING FROM LITTLE PATUXENT PARKWAY TO PARKING AREAS AT REAR OF ZOO TO BE DESIGNATED FIRE LINES.
- TIME LIMIT FOR OPERATION OF ZOO ON EXISTING SITE WILL BE TERMINATED ON JAN 31, 1976 AS SET FORTH IN PARALLEL ZONING CASE #72
- ALL ANIMAL SHELTERS ARE TO BE OF SQUARE DESIGN AS SHED ELEVATION (TYPICAL) SHOWN ABOVE

APPROVED
DIVISION OF LAND DEVELOPMENT
AND TRANSPORTATION PLANNING
HOWARD COUNTY, MARYLAND
DATE 3-27-74
JAC

SITE PLAN - EROSION AND SEDIMENT CONTROL PLAN
FOR
"CHILDRENS PETTING ZOO"
5TH ELECTION DISTRICT HOWARD COUNTY MARYLAND
SCALE 1"=50'
NOVEMBER 1, 1973

PART OF LOT 11 PART OF PARCEL 296
TOWN CENTER SECTION 1
(2.56 ACRES)

PREPARED BY
HODKINS ASSOCIATES INC.
CIVIL ENGINEERS & LAND SURVEYORS
JOSEPH SQUARE
COLUMBIA, MARYLAND 21048



PROFESSIONAL ENGINEER
I CERTIFY THAT THIS PLAN FOR EROSION AND SEDIMENT CONTROL REPRESENTS A PRACTICAL AND WORKABLE PLAN BASED ON MY PERSONAL KNOWLEDGE OF THE SITE CONDITIONS AND THAT IT WAS PREPARED IN ACCORDANCE WITH THE REQUIREMENTS OF THE HOWARD SOIL CONSERVATION DISTRICT.
Signature: Howard W. Kohler
DATE: 11/10/73

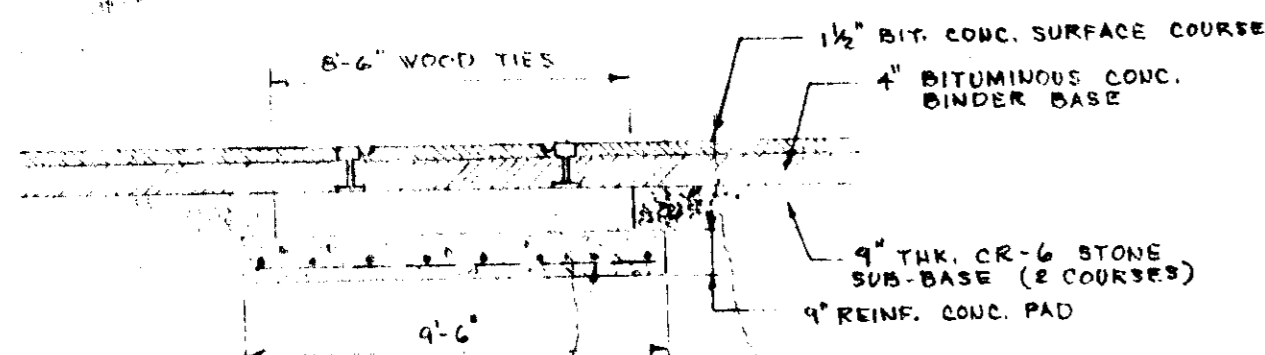
OWNER & DEVELOPER
I CERTIFY THAT ALL DEVELOPMENT AND/OR CONSTRUCTION WILL BE DONE ACCORDING TO THIS PLAN OF DEVELOPMENT AND PLAN FOR EROSION AND SEDIMENT CONTROL, AND I ALSO AUTHORIZE PERIODIC ON-SITE INSPECTION BY THE HOWARD SOIL CONSERVATION DISTRICT OR THEIR AUTHORIZED AGENTS AS ARE DEEMED NECESSARY, DEEMED NECESSARY. DEVIATION FROM THIS PLAN WILL NOT BE MADE UNLESS AUTHORIZED BY THE HOWARD SOIL CONSERVATION DISTRICT.
OWNER SIGNATURE: Howard W. Kohler
DATE: 11/10/73

HOWARD SOIL CONSERVATION DISTRICT
REVIEWED FOR: Kohler S.C.D.
AND MEETS TECHNICAL REQUIREMENTS
DATE: 3-27-74
Signature: [Signature]
U.S. SOIL CONSERVATION SERVICE
THIS DEVELOPMENT PLAN IS APPROVED FOR SOIL EROSION AND SEDIMENT CONTROL BY THE HOWARD SOIL CONSERVATION DISTRICT
DATE: 8-22-74

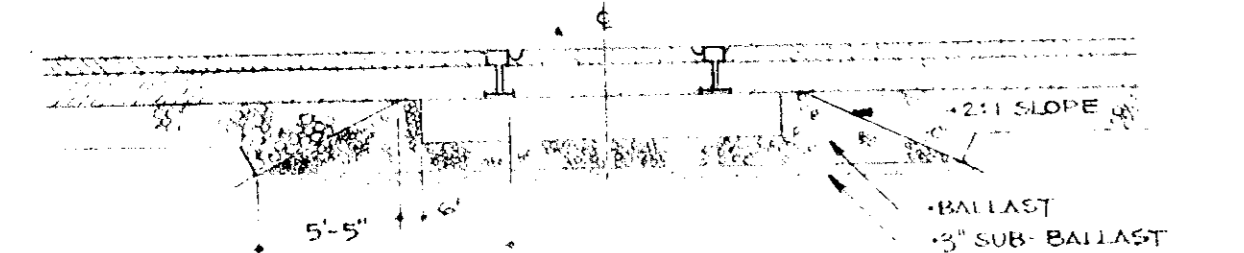
APPROVED FOR PUBLIC WATER AND SEWERAGE SYSTEMS
HOWARD COUNTY HEALTH DEPARTMENT
Signature: [Signature]
COUNTY HEALTH OFFICER
DATE: 4/1/74
APPROVED FOR LAND DEVELOPMENT AND ZONING
Signature: [Signature]
PLANNING DIVISION
CHIEF DIVISION OF LAND DEVELOPMENT AND ZONING
DATE: 4/10/74
APPROVED FOR PUBLIC WATER, SEWERAGE AND STORM DRAINAGE SYSTEMS AND ROADS
Signature: [Signature]
HOWARD COUNTY DEPARTMENT OF PUBLIC WORKS
CHIEF ENGINEER OF HIGHWAYS
DATE: 4/10/74

OWNERS:
HOWARD RESEARCH AND DEVELOPMENT CORPORATION
COLUMBIA, MARYLAND 21048

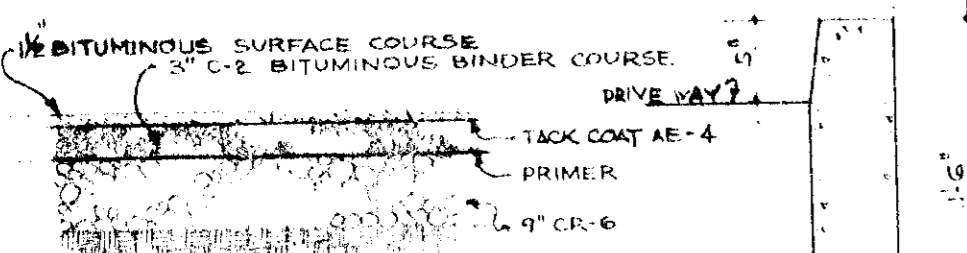
NOTE:
SEE SPECIFICATIONS FOR
RAIL AND TIE DATA.



DETAIL OF R.R. IN PAVED AREAS
ABOVE PIPE CROSSING
NO SCALE



TYPICAL R.R. SIDING IN PAVED AREAS
NO SCALE



DRIVE WAY & PARKING
PAVING DETL
1/2" = 1'-0"

CONC. BARRIER CURB DETAIL
SCALE: 3/4" = 1'-0"

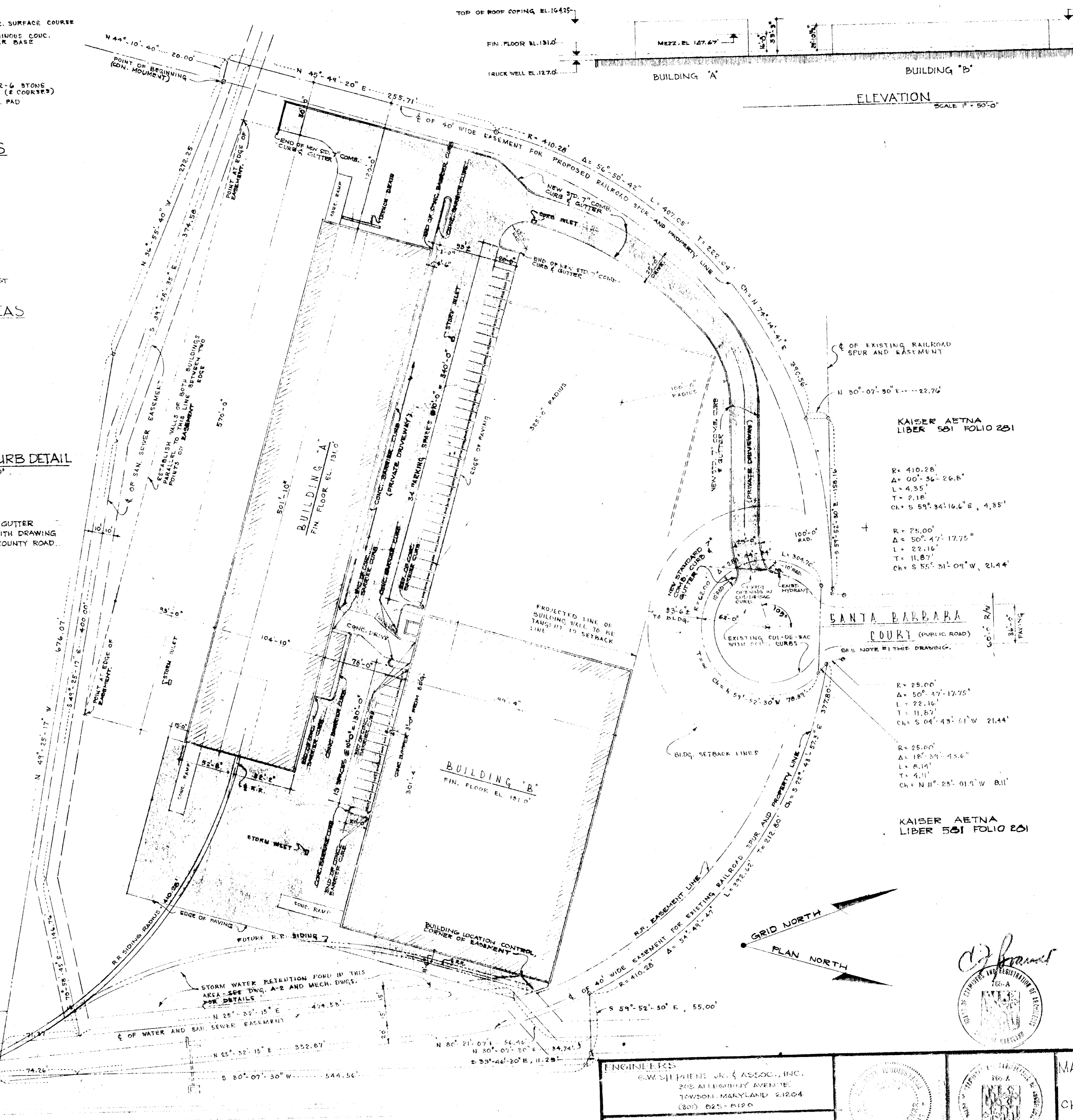
NOTE:

ALL STD. 7" CONC. CURB & GUTTER
SHALL BE IN ACCORDANCE WITH DRAWING
D-40, PAGE 98 OF HOWARD COUNTY ROAD
CONSTRUCTION CODE.

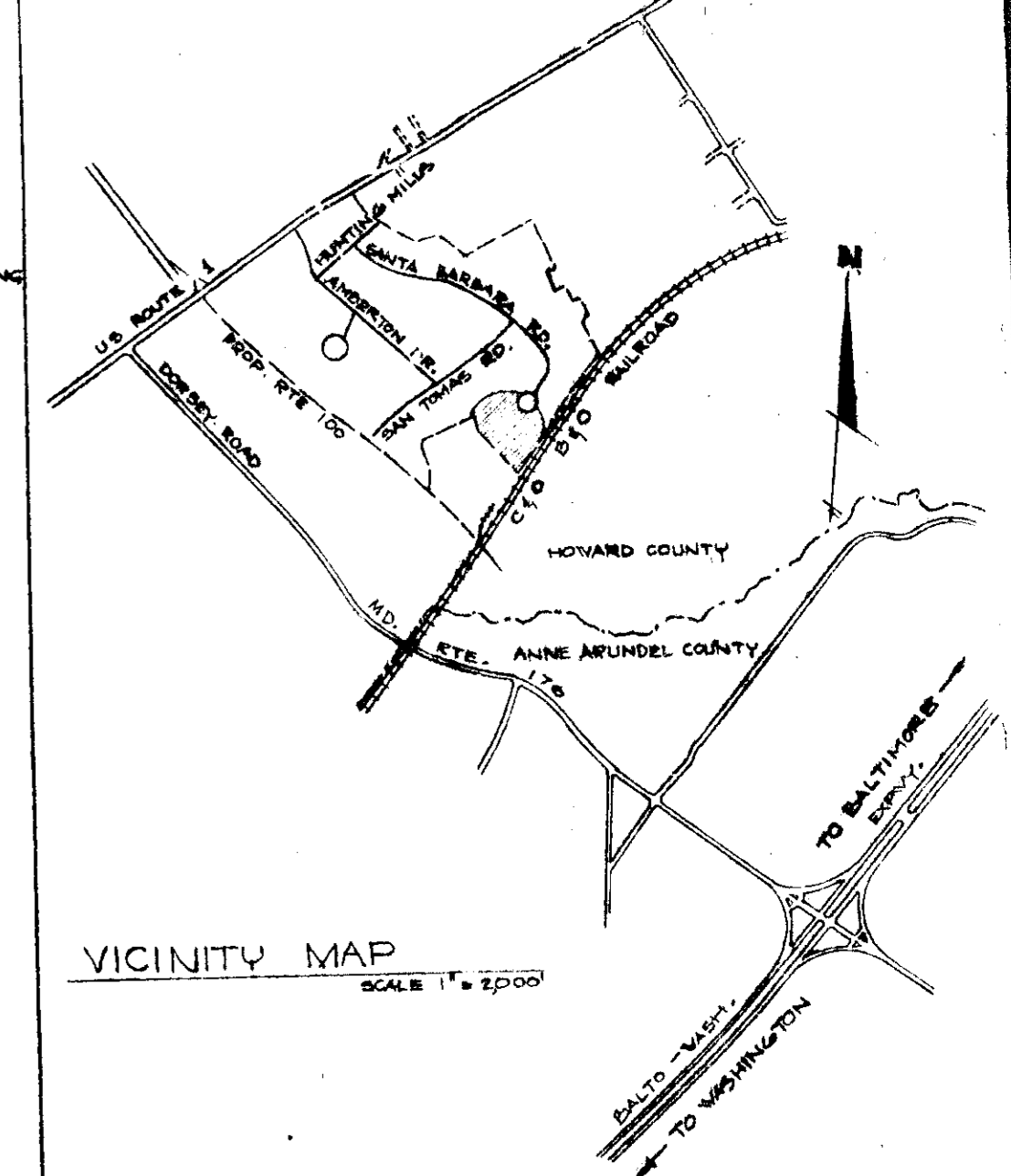
NOTES:

- AREA IS PART OF TAX MAP NO. 27.
- COVERAGE REQUIRED - 50% MAX.
COVERAGE PROVIDED - 21%
POSSIBLE FUTURE COVERAGE - 41.5%
- SANTA BARBARA COURT RECORDED IN PLAT BOOK 28 FOLIO 68
AMONG THE LAND RECORDS OF HOWARD CO., MD.
- OFF-STREET PARKING
REQD. 1 PARKING SPACE FOR TWO EMPLOYEES
BLDG. "A" = 14 EMPLOYEES PER SHIFT
BLDG. "B" = 38 EMPLOYEES PER SHIFT
TOTAL EMPLOYEES = 27 PER SHIFT
PARKING SPACES REQD. = 24
PARKING SPACES PROVIDED 47
- SITE ANALYSIS
GROSS AREA OF PARCEL 1582 PROP. 12.10 ACRES
QUIT CLAIM PROP. 1,597 ACRES
TOTAL 13,777 ACRES
- PRES. ZONING M-2
- TOTAL NUMBER OF EMPLOYEES
(N) THREE SHIFTS = 140
(N) ONE SHIFT = 47
- BLDG. "A" GROUND FLOOR = 92,500 SQ. FT.
BLDG. "A" MEZZANINE = 17,000 SQ. FT.
BLDG. "B" GROUND FLOOR = 60,000 SQ. FT.
BLDG. "B" MEZZANINE = 6,012 SQ. FT.
- ALLEY AREA NONE

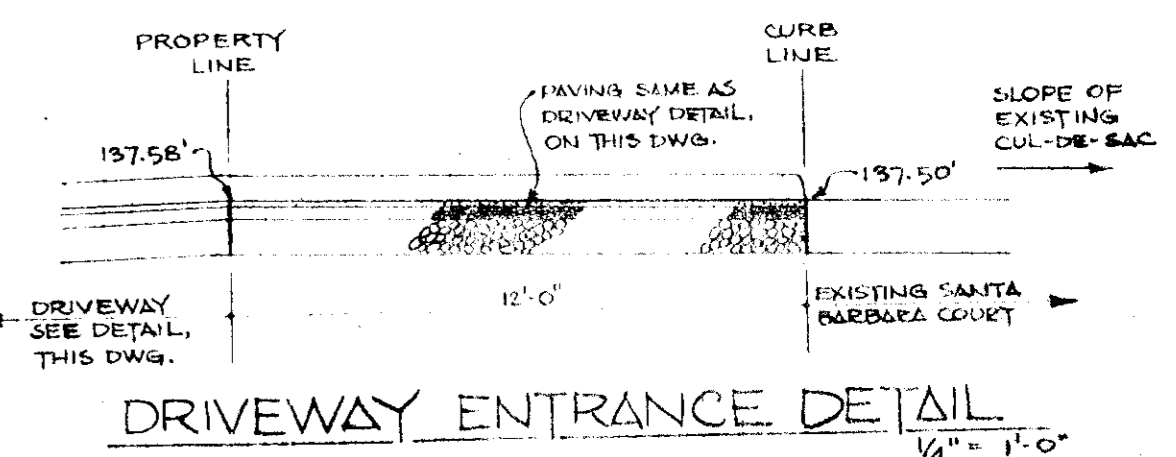
LIBER 501 FOLIO 201



SITE PLAN
SCALE 1" = 80'-0"



VICINITY MAP
SCALE 1" = 200'



DRIVEWAY ENTRANCE DETAIL
1/4" = 1'-0"

KAISER AETNA
LIBER 501 FOLIO 201

R = 410.28'
Δ = 00° 36' 26.6"
L = 4.35'
T = 2.18'
Ch = S 89° 34' 10.6" W, 4.35'

R = 25.00'
Δ = 50° 47' 12.75"
L = 22.16'
T = 11.87'
Ch = S 04° 43' 51" W, 21.44'

SANTA BARBARA
COURT (PUBLIC ROAD)

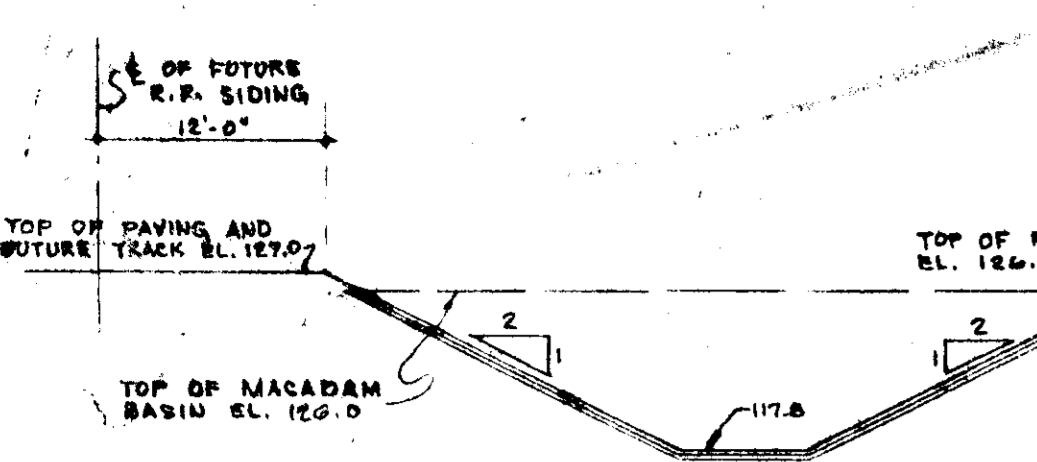
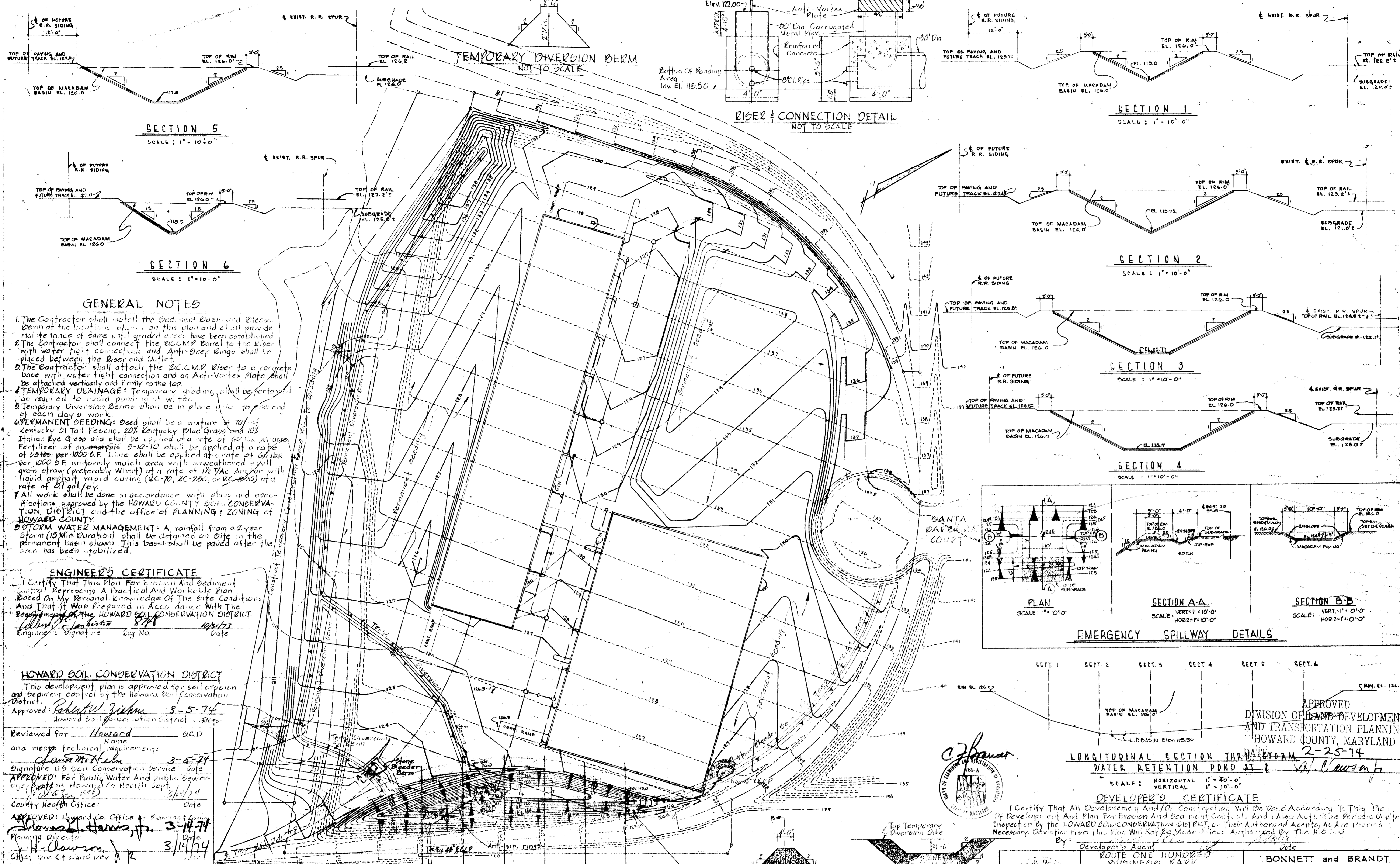
R = 25.00'
Δ = 18° 25' 43.6"
L = 8.14'
T = 4.11'
Ch = N 11° 25' 01.9" W, 8.11'

KAISER AETNA
LIBER 501 FOLIO 201

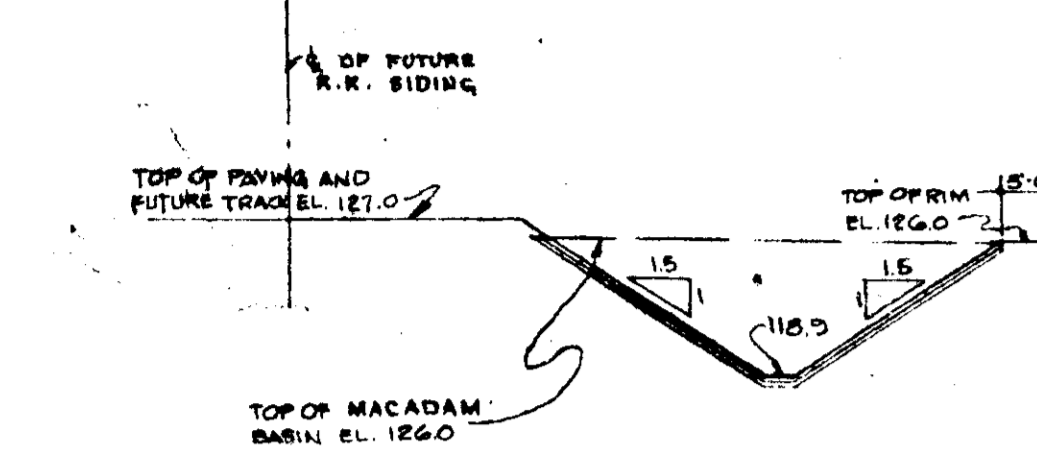
APPROVED
DIVISION OF LAND DEVELOPMENT
AND TRANSPORTATION PLANNING
HOWARD COUNTY, MARYLAND
DATE 2-25-74
J. H. Clawson

LEGEND	
---	PROPERTY LINE
---	EASEMENT AND SETBACK LINE
---	L. OF EASEMENTS AND PROPERTY LINE WHERE SO NOTED
APPROVED FOR PUBLIC WATER AND PUBLIC SEWERAGE SYSTEMS, HOWARD COUNTY HEALTH DEPARTMENT	DATE
COUNTY HEALTH OFFICER	DATE
APPROVED HOWARD COUNTY OFFICE OF PLANNING AND ZONING	DATE
PLANNING DIRECTOR	DATE
CHIEF, DIVISION OF LAND DEVELOPMENT AND TRANSPORTATION PLANNING	DATE
APPROVED FOR PUBLIC WATER, PUBLIC SEWERAGE AND STORM DRAINAGE SYSTEMS AND LOADS	DATE
HOWARD COUNTY DEPARTMENT OF PUBLIC WORKS	DATE
DIRECTOR	DATE
CHIEF, BUREAU OF HIGHWAYS	DATE

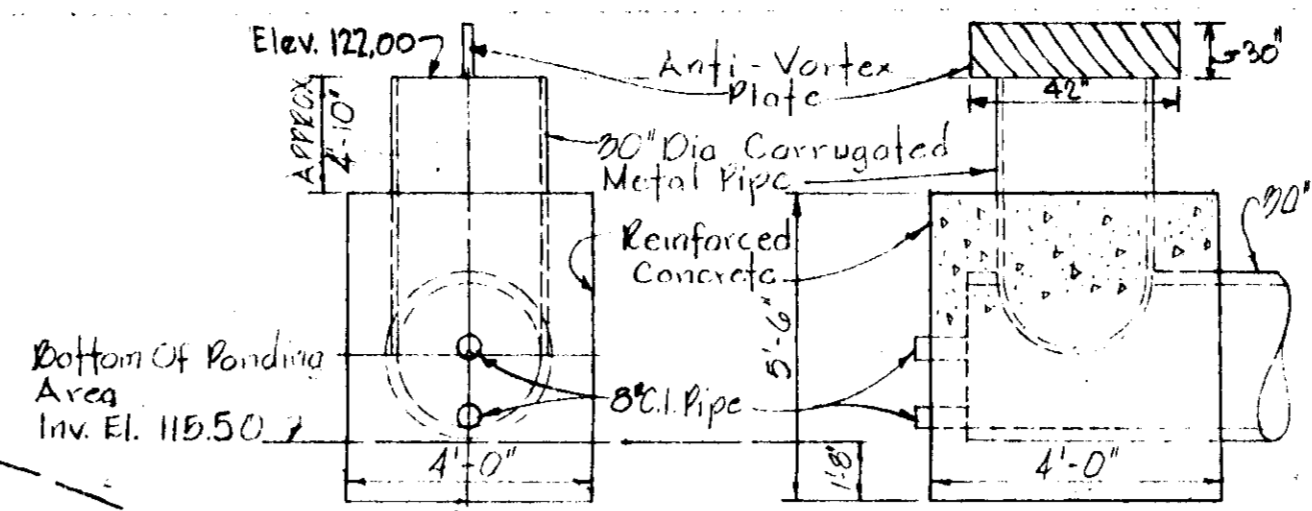
ENGINEERS G.W. STEPHENS, JR. & ASSOC., INC. 205 ALLEGHENY AVENUE TOWSON, MARYLAND 21284 (301) 625-1510	MANUFACTURING BUILDINGS FOR CHICAGO METALLIC CORPORATION SANTA BARBARA COURT ROUTE ONE HUNDRED BUSINESS PARK ELECTION DIST. #1 MARYLAND	BONNETT and BERARD ARCHITECTS and ENGINEERS 518 PARK AVENUE BALTIMORE, MARYLAND 11041-10728 SCALE AS NOTED DRAWN BY A-1
OWNER CHICAGO METALLIC CORPORATION 4849 560TH AUSTIN AVENUE CHICAGO, ILLINOIS 60635 (312) 452-5460	PARCEL D	79-55



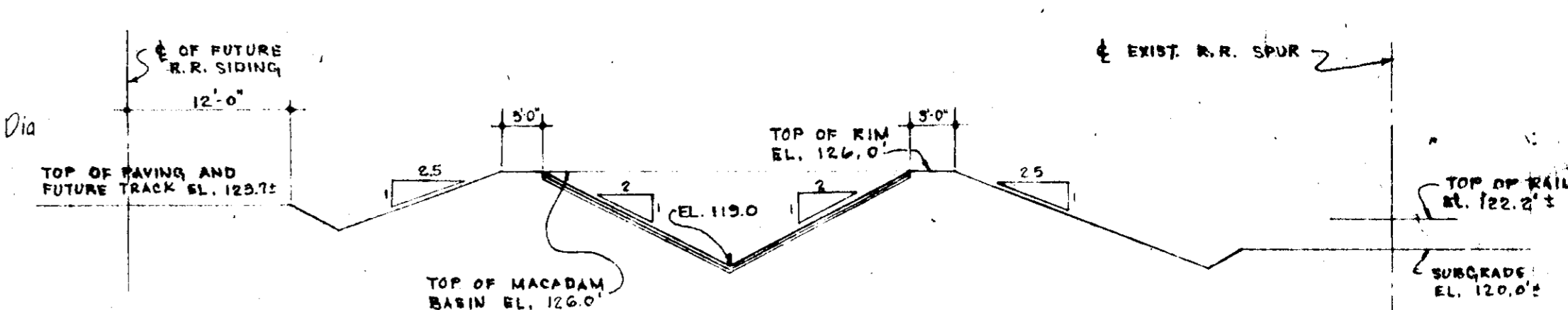
SECTION 5
SCALE: 1" = 10'-0"



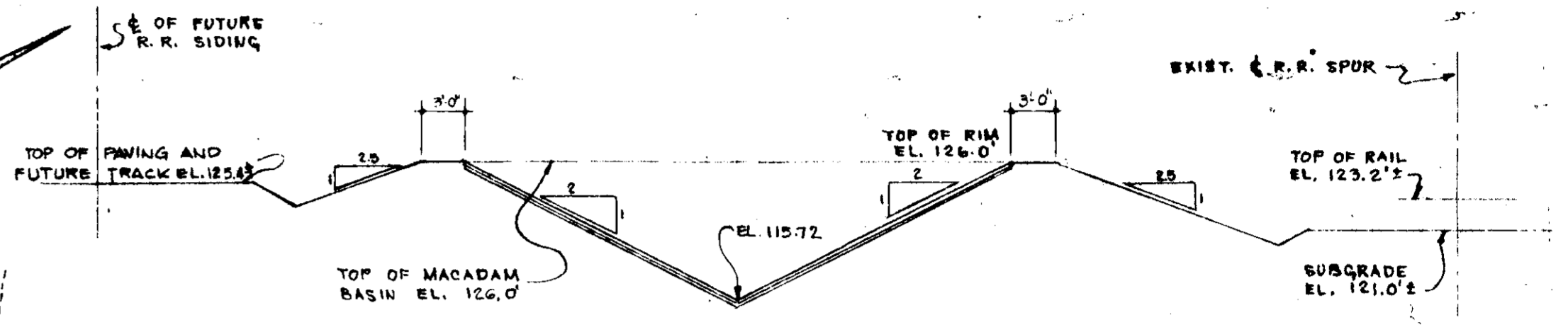
SECTION 6
SCALE: 1" = 10'-0"



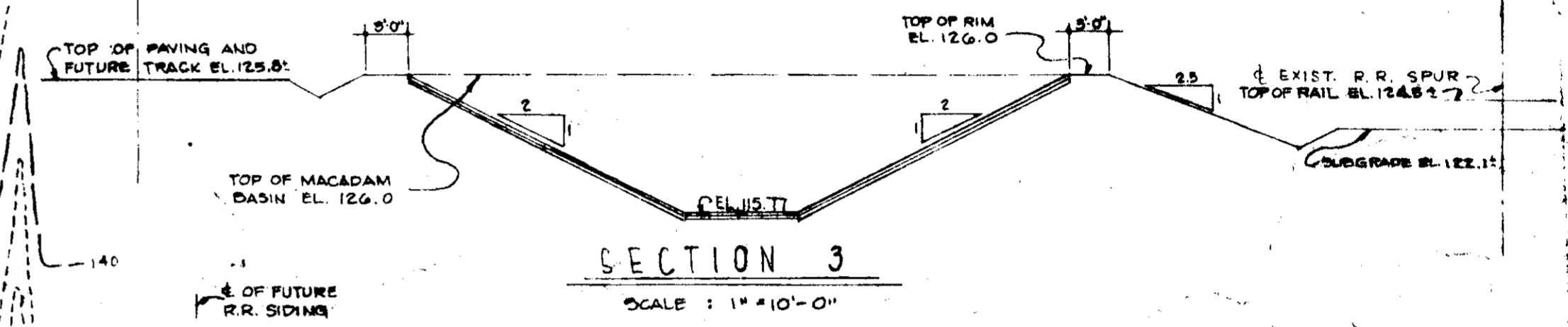
RISER & CONNECTION DETAIL
NOT TO SCALE



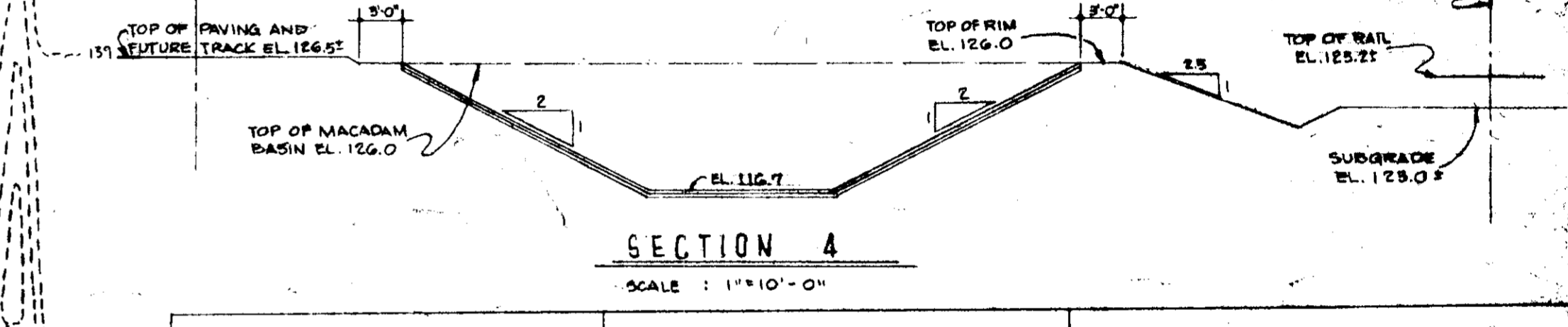
SECTION 1
SCALE: 1" = 10'-0"



SECTION 2
SCALE: 1" = 10'-0"



SECTION 3
SCALE: 1" = 10'-0"



SECTION 4
SCALE: 1" = 10'-0"

GENERAL NOTES

- The Contractor shall install the Sediment Basin and Bleed Berm at the location shown on this plan and shall provide maintenance of same until graded areas have been established.
- The Contractor shall connect the DCCMP Barrel to the Riser with water tight connection and Anti-Deep Rings shall be placed between the Riser and Outlet.
- The Contractor shall attach the DCCMP Riser to a concrete base with water tight connection and an Anti-Vortex Plate shall be attached vertically and firmly to the top.
- TEMPORARY DRAINAGE:** Temporary grading shall be performed as required to avoid ponding of water.
- Temporary Diversion Berms shall be in place until the end of each day's work.
- PERMANENT SEEDING:** Seed shall be a mixture of 70% Kentucky 21 Tall Fescue, 20% Kentucky Blue Grass and 10% Italian Rye Grass and shall be applied at a rate of 60 lbs. per acre. Fertilizer of an analysis 5-10-10 shall be applied at a rate of 25 lbs. per 1000 S.F. Lime shall be applied at a rate of 60 lbs. per 1000 S.F. uniformly which area with unweathered soil grain straw (preferably Wheat) at a rate of 1/2 T/Ac. Anchor with liquid asphalt rapid curing (2C-70, 2C-200, or 2C-250) at a rate of 21 gal./cy.
- All work shall be done in accordance with plans and specifications approved by the HOWARD COUNTY SOIL CONSERVATION DISTRICT and the office of PLANNING & ZONING of HOWARD COUNTY.
- STORM WATER MANAGEMENT:** A rainfall from a 2 year storm (15 Min Duration) shall be detained on Site in the permanent basin shown. This basin shall be paved after the area has been stabilized.

ENGINEER'S CERTIFICATE

I Certify That This Plan For Erosion And Sediment Control Represents A Practical And Workable Plan Based On My Personal Knowledge Of The Site Conditions And That It Was Prepared In Accordance With The Requirements Of The HOWARD SOIL CONSERVATION DISTRICT.
 Edward J. Johnston 8/16/74
 Engineer's Signature Reg. No. 101173 Date

HOWARD SOIL CONSERVATION DISTRICT

This development plan is approved for soil erosion and sediment control by the Howard Soil Conservation District.
 Approved: Robert J. Zichner 3-5-74
 Howard Soil Conservation District - Date

Reviewed for Howard SOCD and meet technical requirements
 Name: James McNeil Date: 3-5-74
 Signature: US Soil Conservation Service Date: 3/5/74

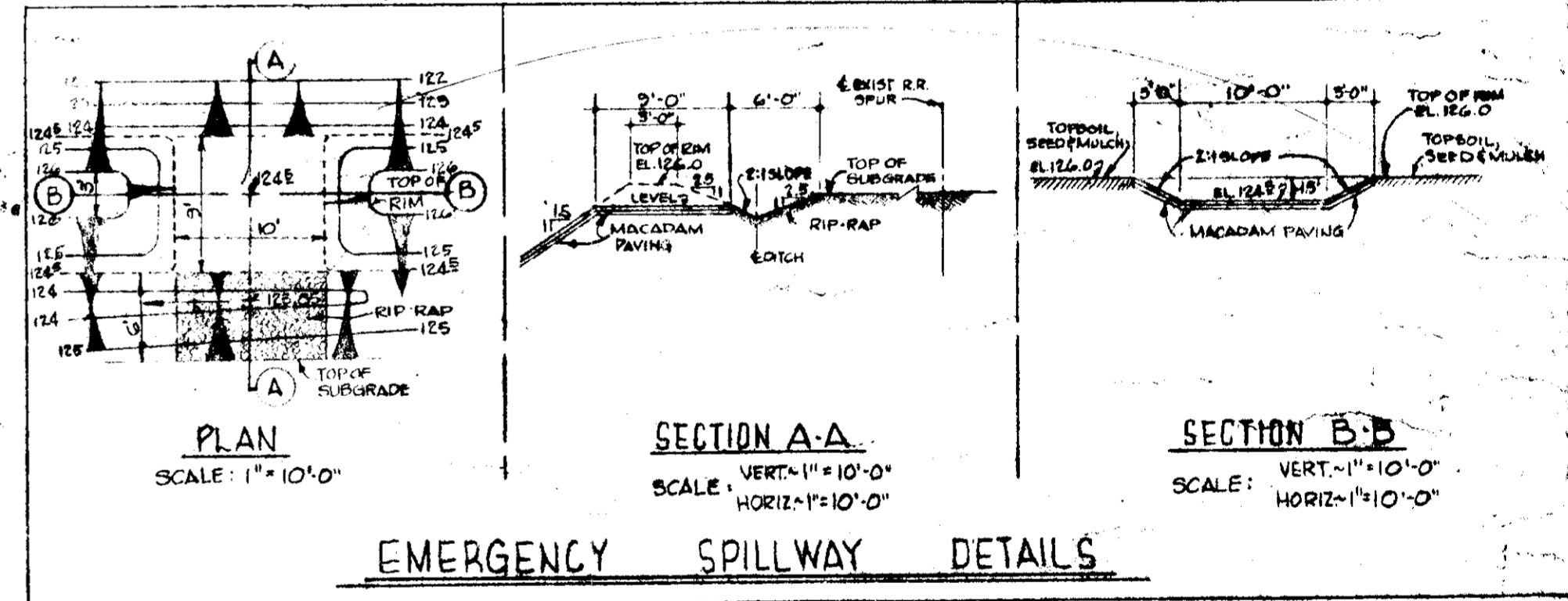
APPROVED: For Public Water And Public Sewerage Systems Howard Co Health Dept.
 Date: 3/12/74
 County Health Officer

APPROVED: Howard Co. Office of Planning & Zoning
 Name: James H. Huns Date: 3-14-74
 Planning Director

APPROVED: For Public Water, Public Sewerage And Storm Drainage Systems And Road Howard Co Dept. of Public Works
 Name: H. H. Clouston Date: 3/14/74
 Chief, Bureau of Highways

APPROVED: For Public Water, Public Sewerage And Storm Drainage Systems And Road Howard Co Dept. of Public Works
 Name: W. L. O. Date: 3/16/74
 Chief, Bureau of Highways

Edward J. Johnston
 Professional Engineer
 Reg. No. 101173 Date: 10/3/73



EMERGENCY SPILLWAY DETAILS

APPROVED
 DIVISION OF LAND DEVELOPMENT AND TRANSPORTATION PLANNING
 HOWARD COUNTY, MARYLAND
 DATE: 2-25-74
 LONGITUDINAL SECTION THROUGH WATER RETENTION POND AT
 SCALE: HORIZONTAL 1" = 20'-0" VERTICAL 1" = 10'-0"

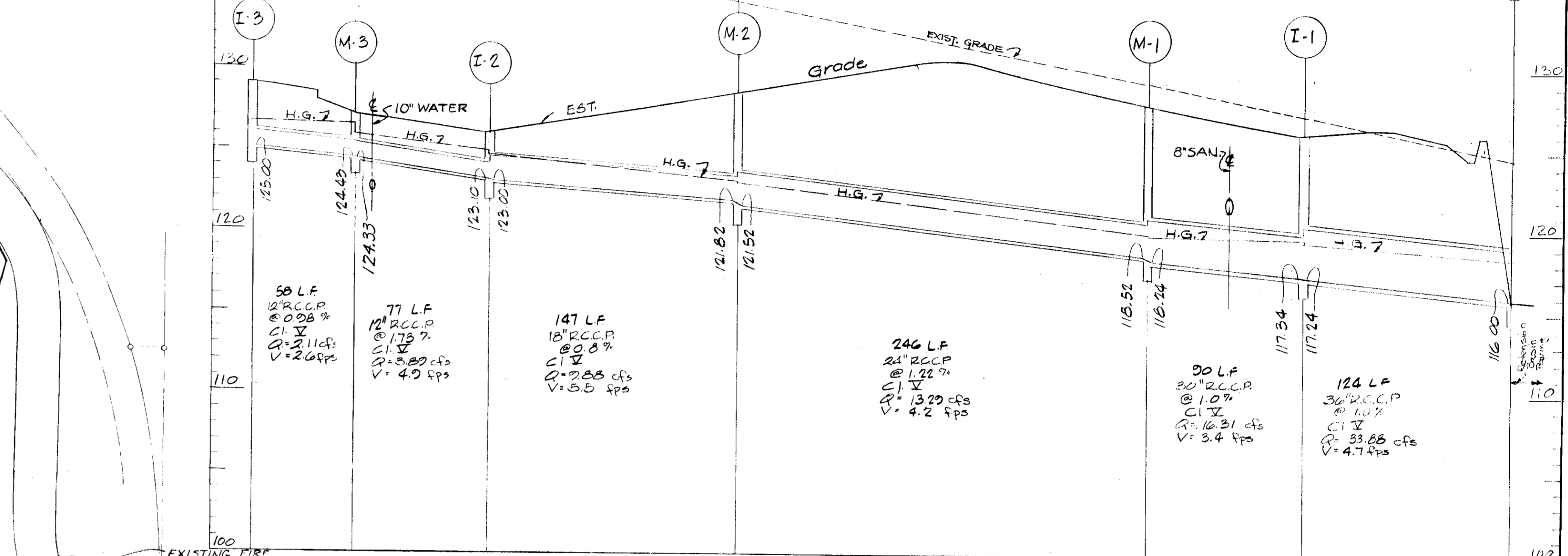
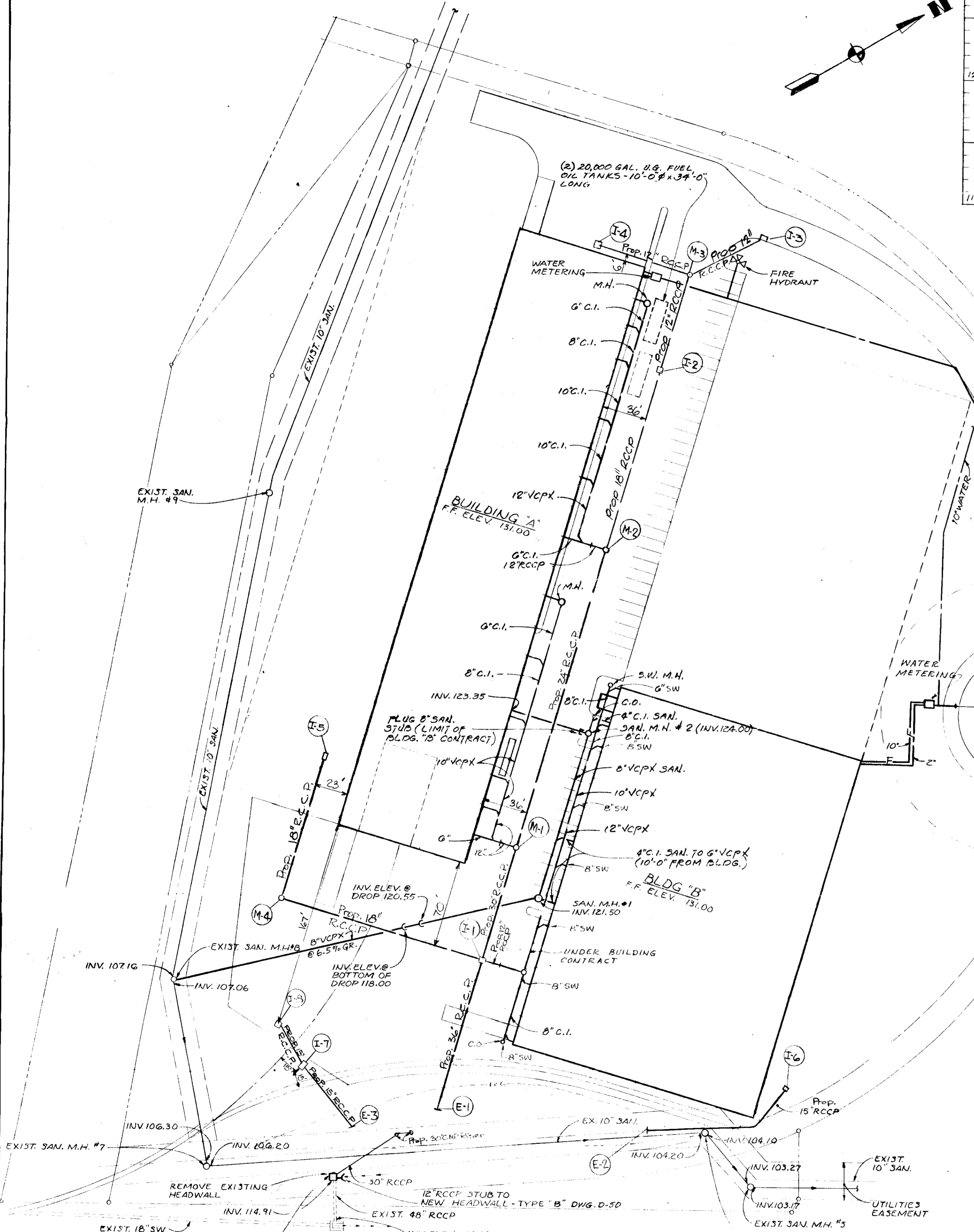
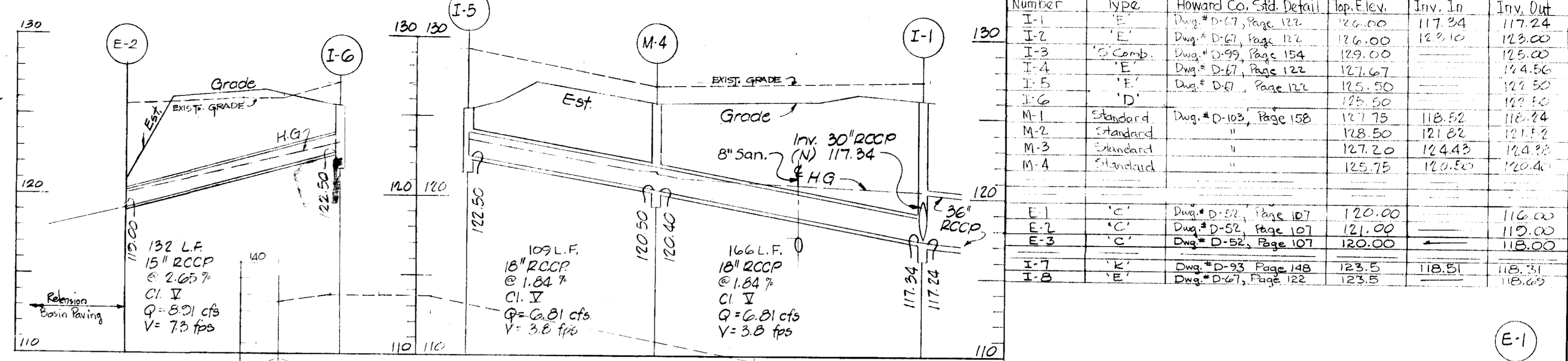
DEVELOPER'S CERTIFICATE

I Certify That All Development And Construction Will Be Done According To This Plan, Development Plan And Plan For Erosion And Sediment Control, And I Also Authorize Periodic Or other Inspection by the HOWARD SOIL CONSERVATION DISTRICT or Their Authorized Agency As See herein Necessary. Deviation from This Plan Will Not Be Made Without Authority by The H.C.S.D.
 By: Developer's Agent Date: 2/25/74

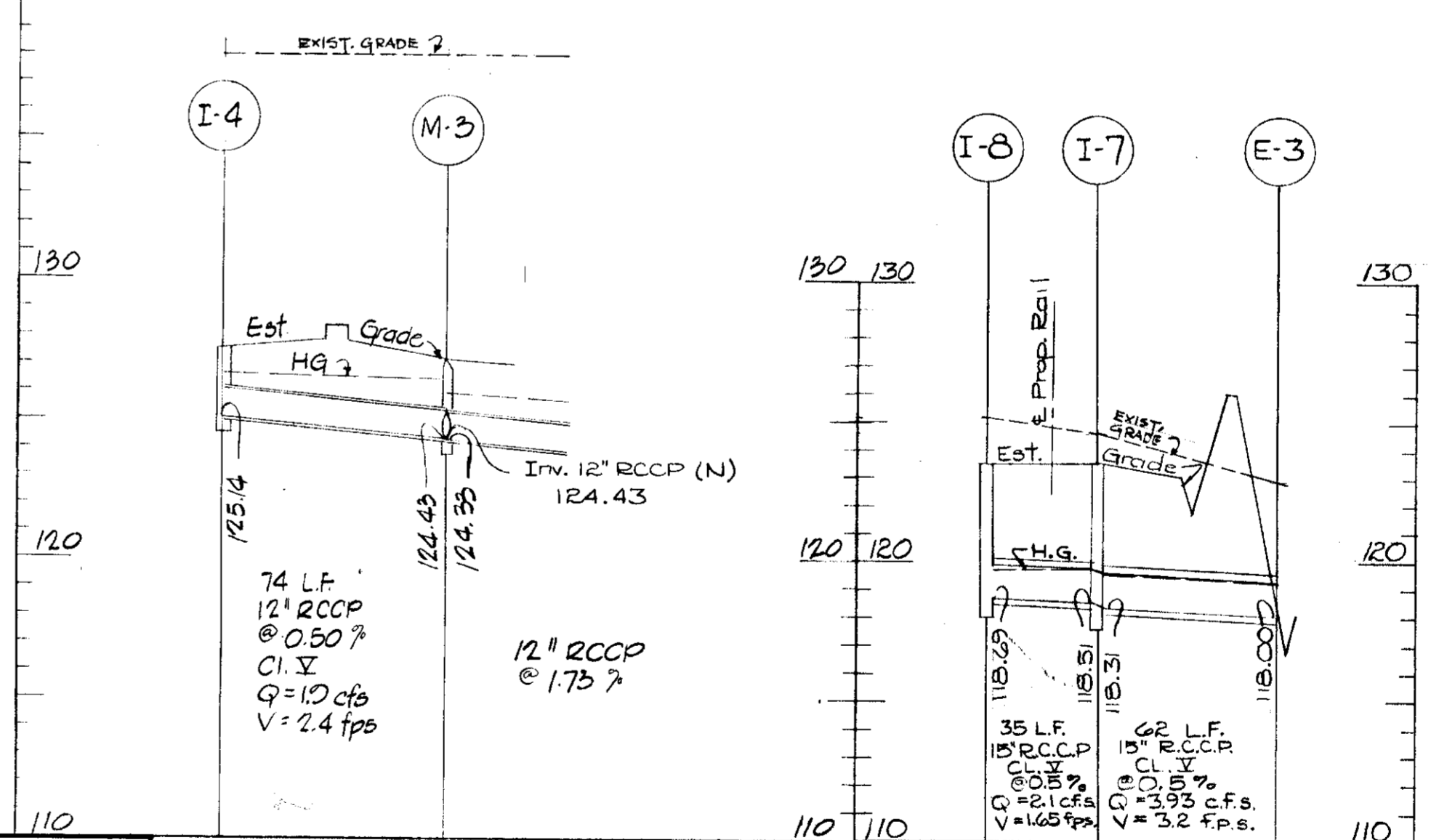
CHICAGO METALLIC CORPORATION SANTA BARBARA COURT ROUTE ONE HUNDRED BUSINESS PARK ELECTION DIST. #1 HOWARD COUNTY MARYLAND	DATE: OCT. 31, 1973 REVISIONS:	SCALE: AS INDICATED JOB NO. 674	BALTIMORE MARYLAND
	BONNETT and BRANDT ARCHITECTS and ENGINEERS 515 PARK AVENUE BALTIMORE, MARYLAND DRAWING A-2		

SDP 74-55

STORM DRAIN		STRUCTURE		SCHEDULE	
Number	Type	Howard Co. Std. Detail	Top Elev.	Inv. In	Inv. Out
I-1	E	Dwg. # D-67, Page 127	126.00	117.84	117.24
I-2	E	Dwg. # D-67, Page 127	126.00	117.84	117.24
I-3	E	Dwg. # D-67, Page 127	126.00	117.84	117.24
I-4	E	Dwg. # D-67, Page 127	126.00	117.84	117.24
I-5	E	Dwg. # D-67, Page 127	126.00	117.84	117.24
I-6	E	Dwg. # D-67, Page 127	126.00	117.84	117.24
M-1	Standard	Dwg. # D-103, Page 158	127.75	118.52	118.74
M-2	Standard	"	128.50	121.02	121.18
M-3	Standard	"	127.20	124.42	124.88
M-4	Standard	"	125.75	120.80	120.40
E-1	C	Dwg. # D-57, Page 107	120.00		116.00
E-2	C	Dwg. # D-52, Page 107	121.00		119.00
E-3	C	Dwg. # D-52, Page 107	120.00		118.00
I-7	K	Dwg. # D-93, Page 148	123.5	118.51	118.51
I-8	E	Dwg. # D-67, Page 127	123.5		118.00



PROFILES
Scale: 1"=50' Hor.
1"=5' Vert.



- LEGEND
- SANITARY SAN.
 - STORM WATER, SW.
 - CLEANOUT, CO.
 - WATER

APPROVED: [Signature] PUBLIC WORKS ENGINEER
 APPROVED: [Signature] CHIEF, DIVISION OF LAND DEVELOPMENT AND TRANSPORTATION PLANNING
 APPROVED: [Signature] CHIEF, BUREAU OF HIGHWAYS

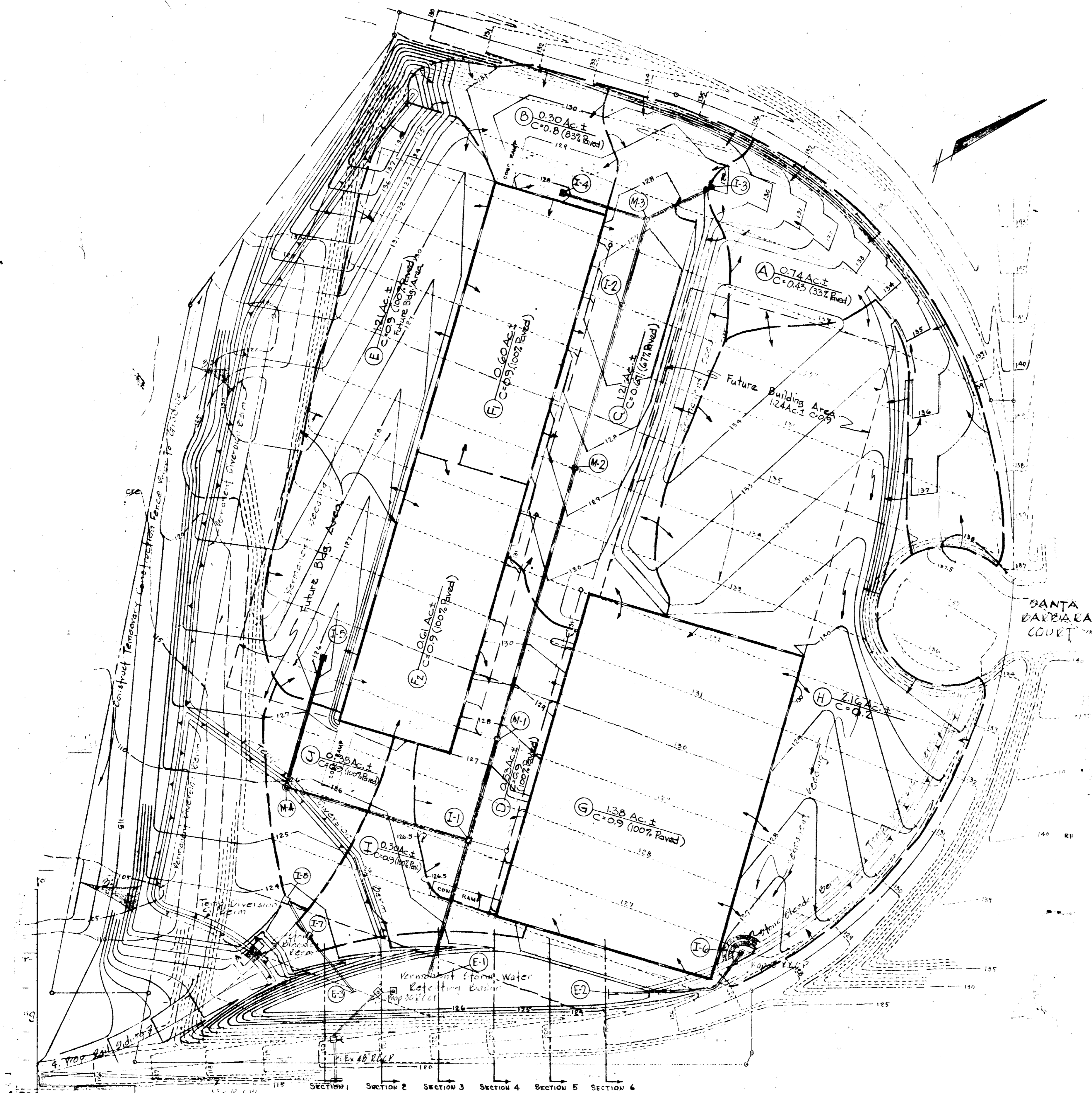
APPROVED
 DIVISION OF LAND DEVELOPMENT
 AND TRANSPORTATION PLANNING
 HOWARD COUNTY, MARYLAND
 DATE 2-25-74
 [Signature]



MANUFACTURING BUILDINGS
 FOR
 CHICAGO METALLIC CORPORATION
 SANTA BARBARA COURT
 ROUTE ONE HUNDRED BUSINESS PARK
 ELECTION DIST. #1 HOWARD COUNTY
 BLOCK F MARYLAND PARCEL B

BONNETT and BRANDT
 ARCHITECTS and ENGINEERS
 515 PARK AVENUE
 BALTIMORE MARYLAND
 DATE: 11-26-73
 SCALE: AS NOTED
 DRAWING: U-1

SDP 74-55



DRAINAGE AREA MAP
SCALE: 1" = 50'-0"

Charles E. Fisk #5043 1-22-74

APPROVED
DIVISION OF LAND DEVELOPMENT
AND TRANSPORTATION PLANNING
HOWARD COUNTY, MARYLAND
DATE 2-25-74

APPROVED FOR PUBLIC WATER AND PUBLIC SEWERAGE SYSTEMS, HOWARD COUNTY HEALTH DEPARTMENT
J. H. ... 3/12/74
COUNTY HEALTH OFFICER DATE

APPROVED: HOWARD COUNTY OFFICE OF PLANNING AND ZONING
Thomas G. Harris Jr. 3-16-74
PLANNING DIRECTOR DATE

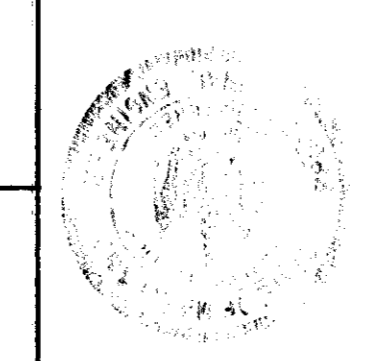
CHIEF DIVISION OF LAND DEVELOPMENT AND TRANSPORTATION PLANNING DATE

APPROVED FOR PUBLIC WATER, PUBLIC SEWERAGE AND STORM DRAINAGE SYSTEMS AND ROADS
HOWARD COUNTY DEPARTMENT OF PUBLIC WORKS
Willis A. ... 3/12/74
DIRECTOR DATE

J. H. ... 3/16/74
CHIEF BUREAU OF HIGHWAYS DATE

ENGINEERS
G.W. STEPHENS, JR. & ASSOC., INC.
303 ALLEGHENY AVENUE
TOWSON, MARYLAND 21204
(301) 825-8120

OWNER
CHICAGO METALLIC CORPORATION
4849 SOUTH AUSTIN AVENUE
CHICAGO, ILLINOIS 60638
(312) 458-5460



MANUFACTURING BUILDINGS
FOR
CHICAGO METALLIC CORPORATION
SANTA BARBARA COURT
ROUTE ONE HUNDRED BUSINESS PARK
ELECTION DIST. #1 HOWARD COUNTY
BLOCK F MARYLAND PARCEL B

BONNETT and BRANDT
ARCHITECTS and ENGINEERS
515 PARK AVENUE
BALTIMORE MARYLAND
DATE: 11-21-73 SCALE: AS NOTED DRAWING
REVISED: JOB NO. U-2
674

SDP 74-55