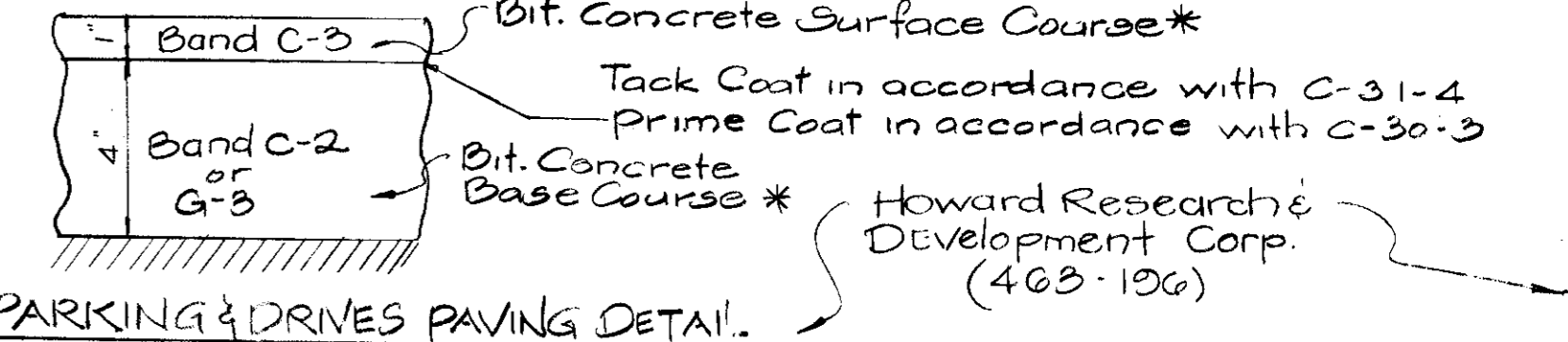


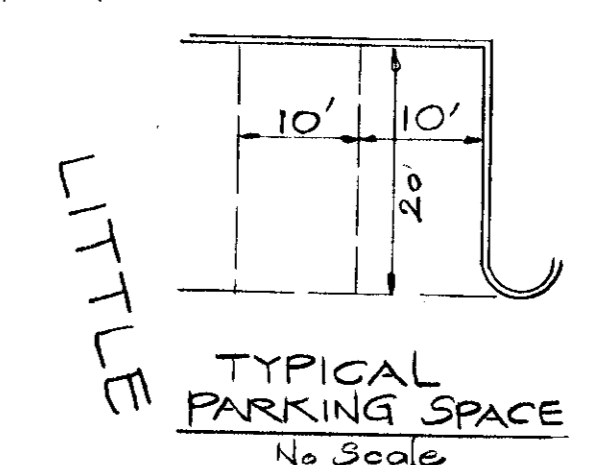
**GENERAL NOTES**

1. Area of site equals 7974 Ac.
2. Existing zoning of site: N.T. Employment Commercial
3. Existing use of site: Public Hazard Land
4. Site shall be supplied by public water & public sanitary sewer
5. Landscaping will be provided within the parking lot & along the perimeter of the site.
6. All drives within the site are private.
7. Allowable building coverage equals 50%
8. Proposed building coverage equals 7.2%
9. Road off-street parking (2,1000 sq. ft. bldg.) = 10.2
10. Proposed off-street parking = 22.5
11. All traffic control services, parking & signing to be done in accordance with the Manual of Uniform Traffic Control Devices, 1971 Edition.



**PARKING & DRIVES PAVING DETAIL**

\* All materials & construction shall be in accordance with Howard Co. Road Construction Code & Standard Specifications.



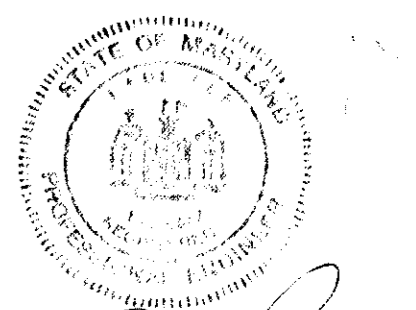
Construct sidewalk as shown as part of total site development. Sidewalk to be as per Howard Co. Std. Dwg. D-14

APPROVED FOR PUBLIC WATER AND PUBLIC SEWERAGE SYSTEMS HOWARD COUNTY HEALTH DEPARTMENT	<i>[Signature]</i>	2/6/74
COUNTY HEALTH OFFICER		DATE
APPROVED HOWARD COUNTY OFFICE OF PLANNING & ZONING	<i>[Signature]</i>	2-6-74
PLANNING DIRECTOR		DATE
CHIEF, DIVISION OF LAND DEVELOPMENT AND TRANSPORTATION PLANNING	<i>[Signature]</i>	2/6/74
		DATE
APPROVED FOR PUBLIC WATER, PUBLIC SEWERAGE AND STORM DRAINAGE SYSTEMS & ROADS HOWARD COUNTY DEPARTMENT OF PUBLIC WORKS	<i>[Signature]</i>	2/5/74
DIRECTOR		DATE
<i>[Signature]</i>		1/28/74
CHIEF, BUREAU OF HIGHWAYS		DATE

**SITE PLAN PARCEL A**  
**TOWN CENTER - SECT. 2, AREA 3 -**  
**MALL NORTH OFFICE BUILDING**

TAX MAP # 30 - FDR PHASE 121  
Election Dist. # 8  
Scale: 1" = 30'  
Howard County, Md.  
Sept. 5, 1973  
Rev. Oct. 31, 1973  
Recorded as Town Center Parcel 'A'  
in P.B. 23, R. 14, S. 23-72

SH. 1 of 2



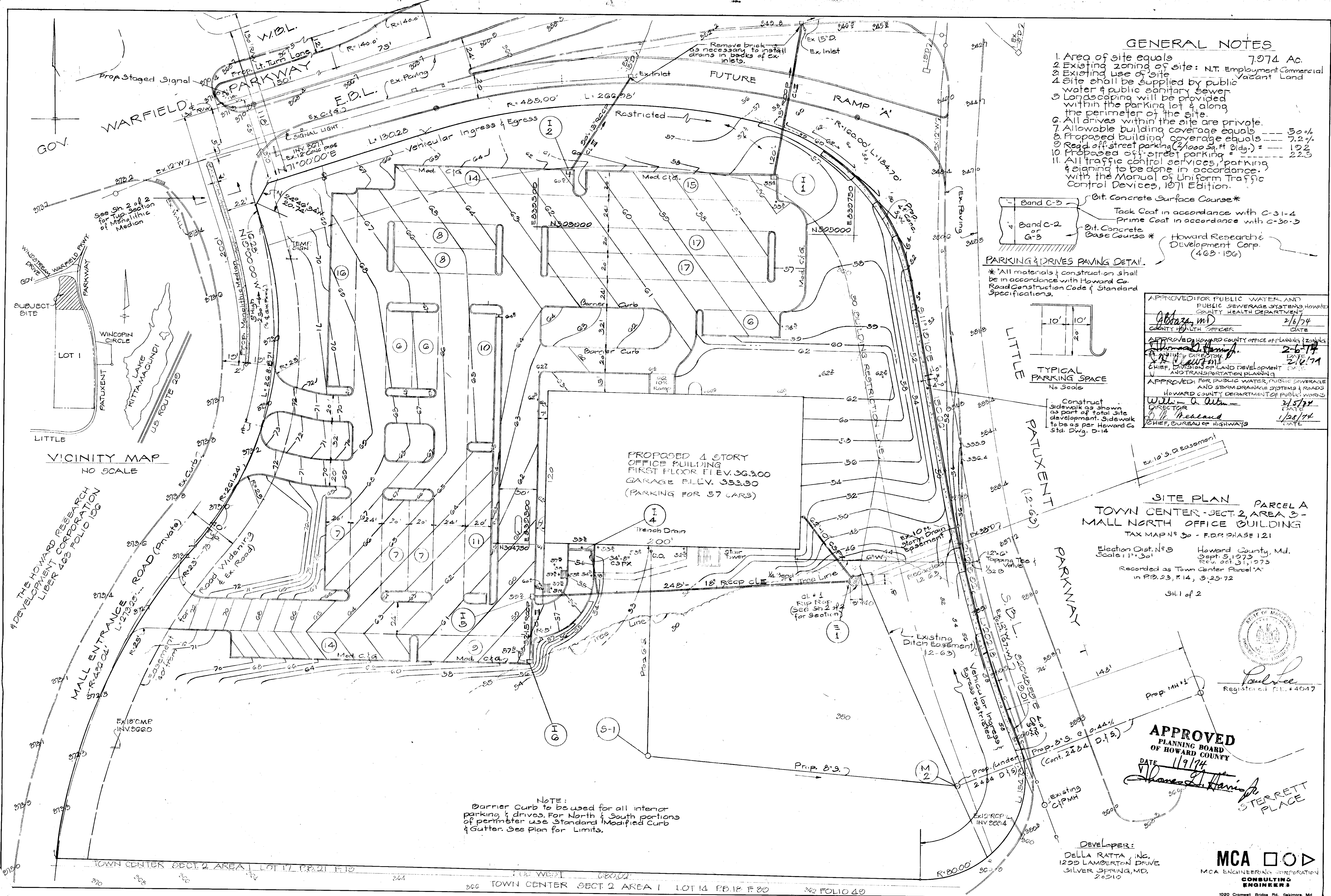
**APPROVED**  
**PLANNING BOARD**  
**OF HOWARD COUNTY**

DATE 1/9/74  
*[Signature]*  
STERRETT PLACE

**DEVELOPER:**  
DELLA RATTI, INC.  
1200 LAMBERTON DRIVE  
SILVER SPRING, MD.  
20910

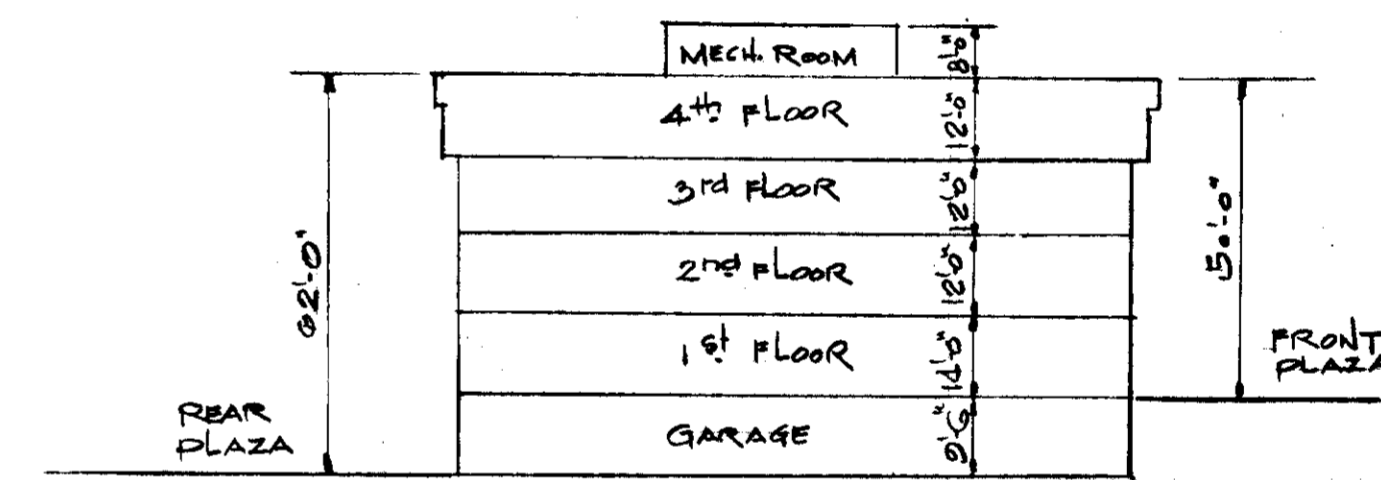
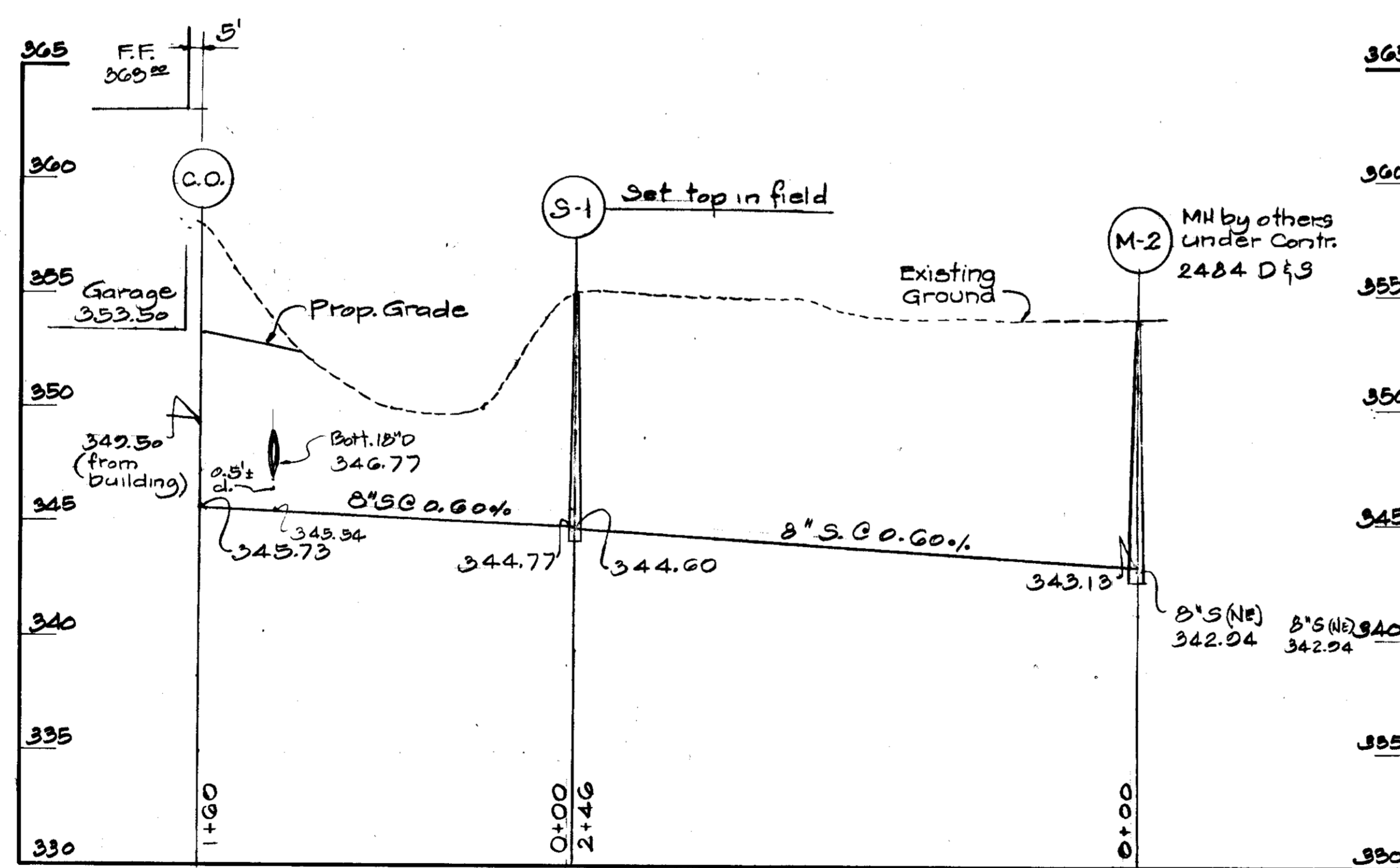
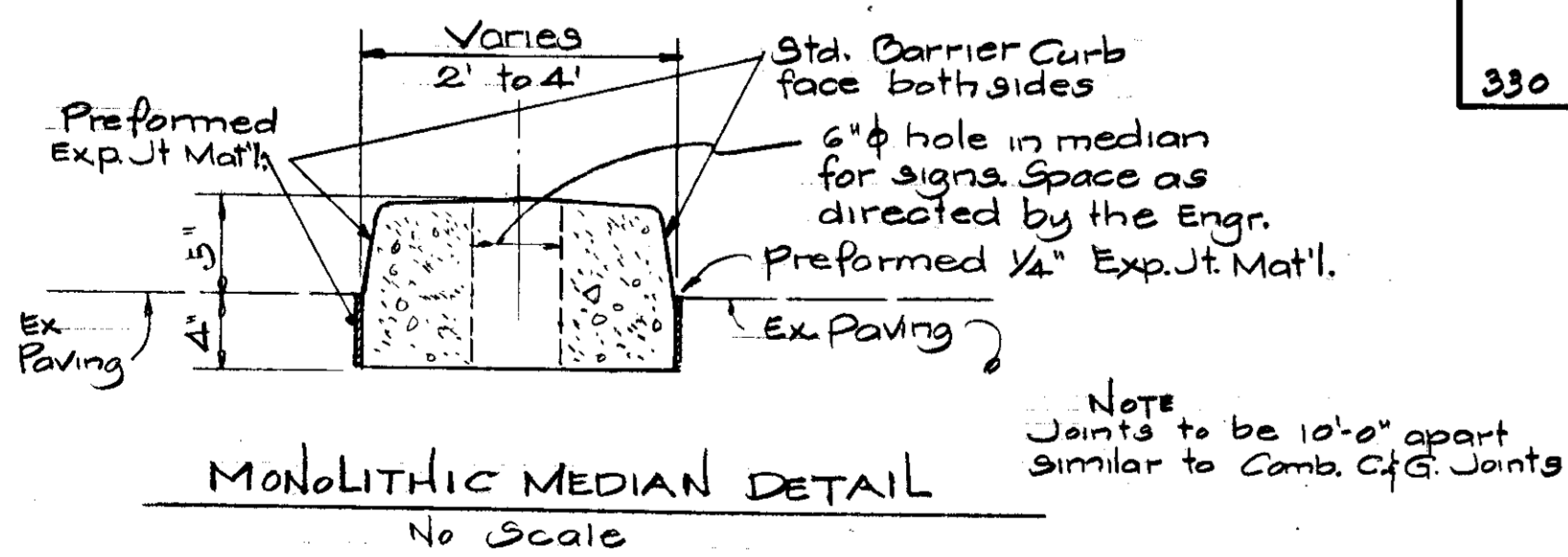
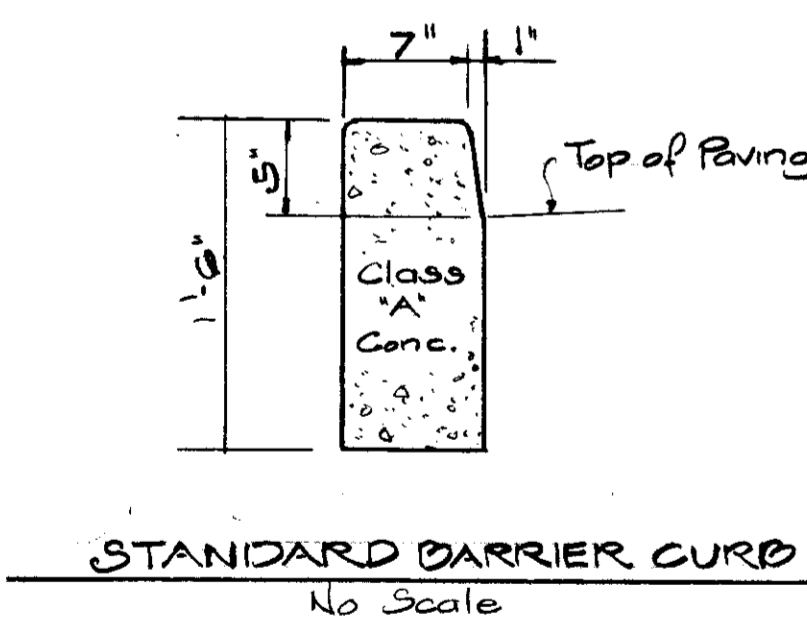
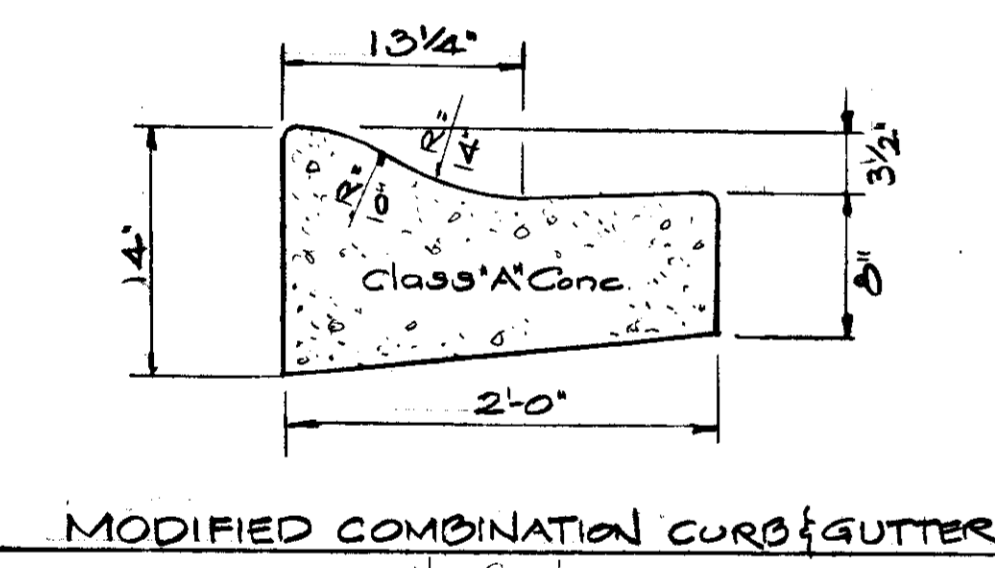
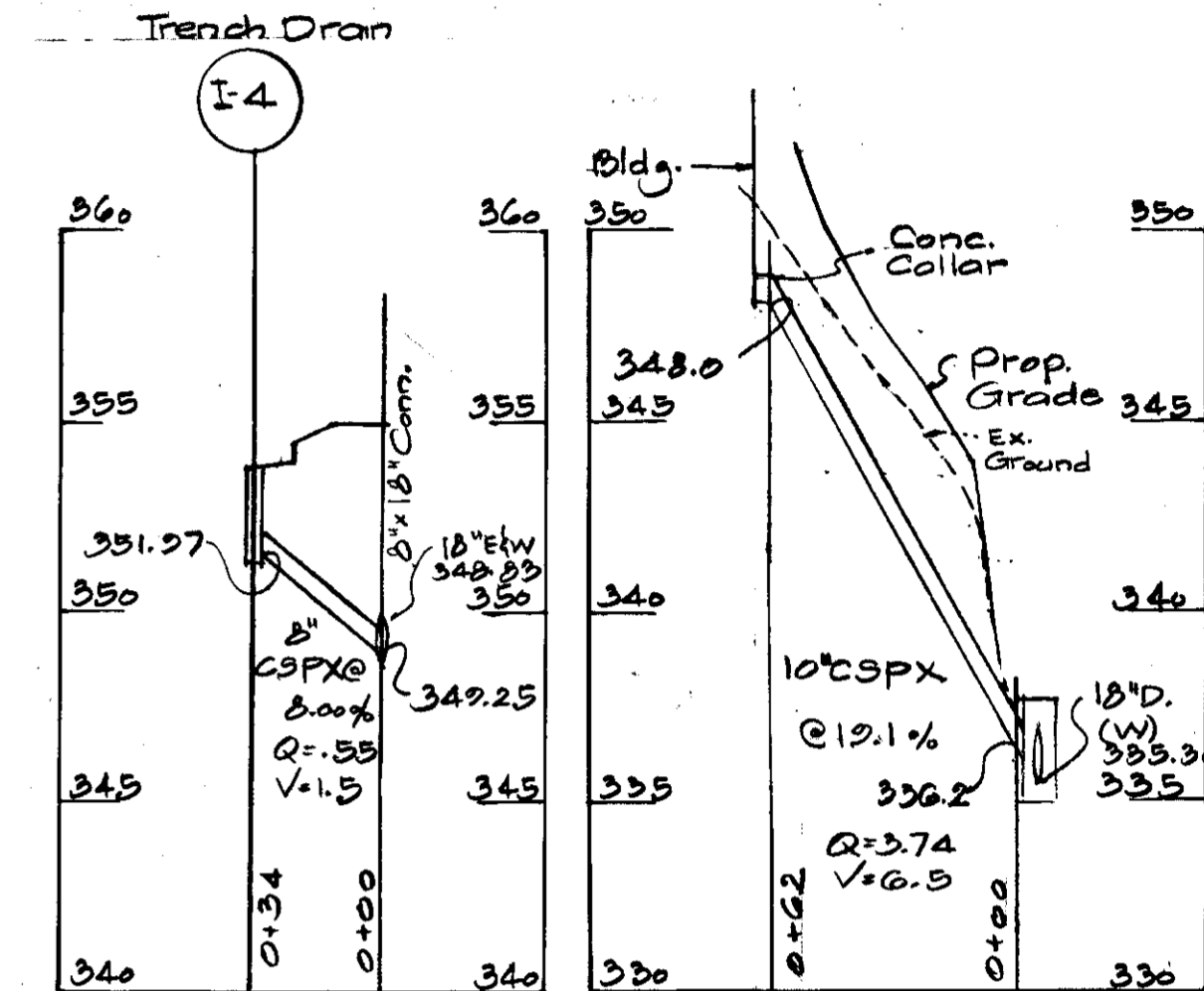
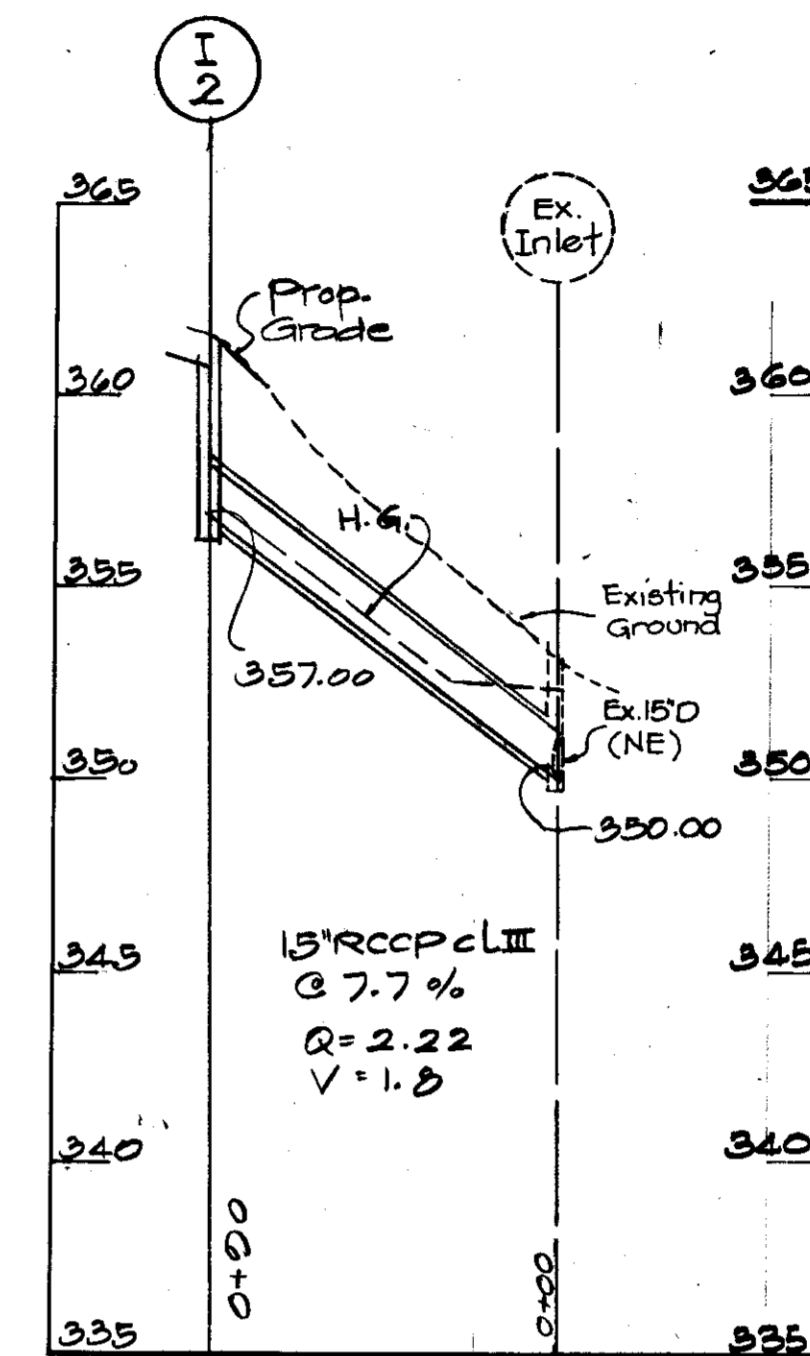
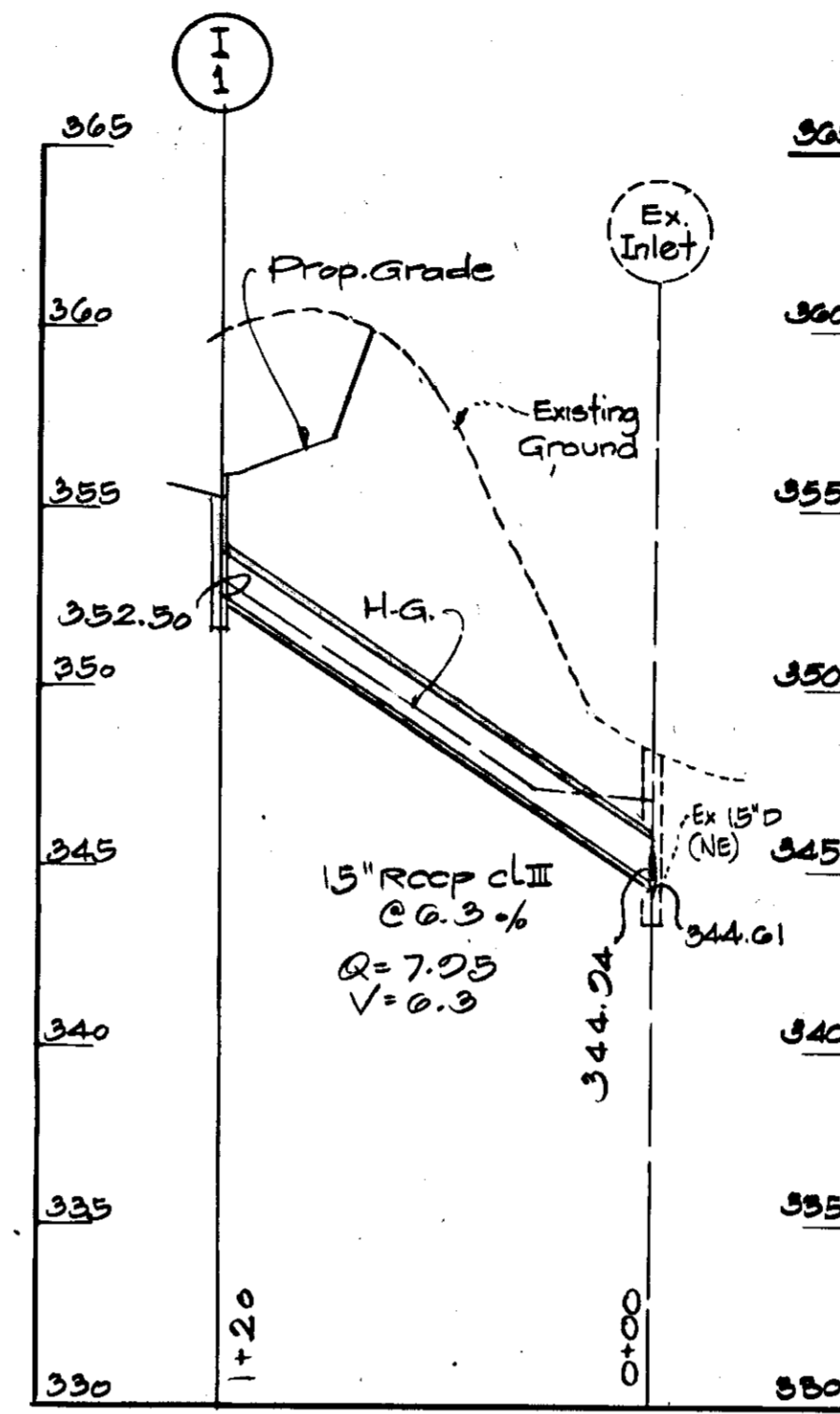
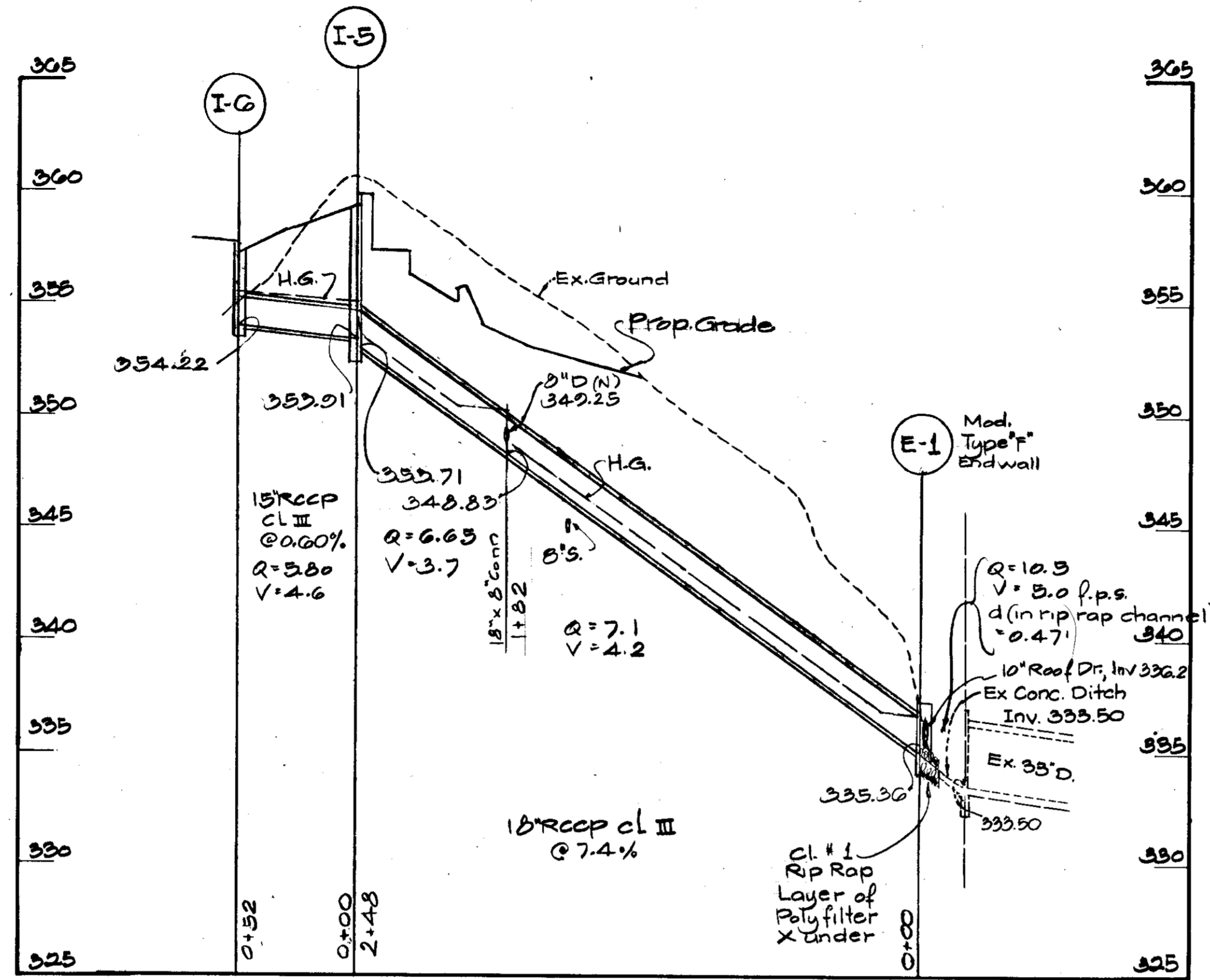
**MCA**   
MCA ENGINEERING CORPORATION  
CONSULTING ENGINEERS  
1020 Cromwell Bridge Rd., Gaithersburg, Md.

SOP 74-33C 0 73266

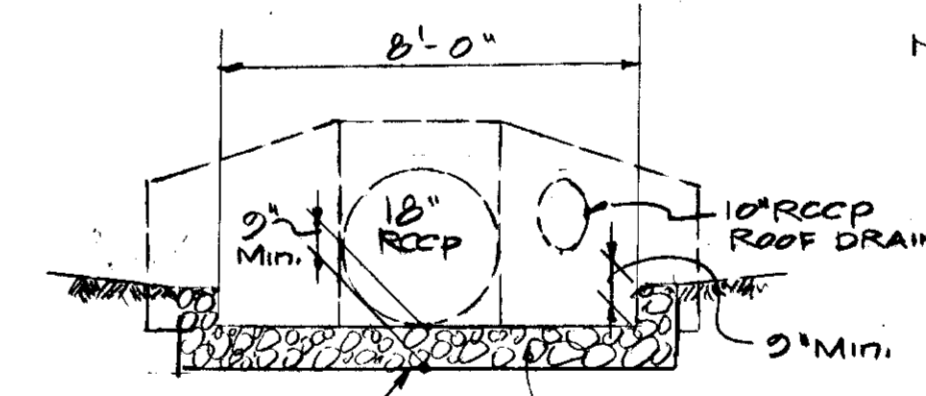


STRUCTURE SCHEDULE			
N <sup>o</sup>	TYPE	TOPEL*	REMARKS
1	TYPE S Comb.	336.00	Std. Dwg. D-99
2	TYPE S Comb.	321.50	Std. Dwg. D-99
3	TYPE C Endwall	-	Std. Dwg. D-92
4	Trench Drain	329.30	-
5	TYPE S Comb.	329.80	Std. Dwg. D-99
6	TYPE S Comb.	338.40	Std. Dwg. D-99

\* Top of pre-cast head given for S Comb.  
Top of grate for Trench Drain



NOTE: Floor area for each floor = 24,000 Sq. Ft.



UTILITY PROFILES & MISCELLANEOUS DETAILS  
TOWN CENTER - SECT. 2, AREA 3 - PARCEL A

MALL NORTH OFFICE BUILDING

PLANNING BOARD OF HOWARD COUNTY TAX MAP N<sup>o</sup> 30 - F.D.P. PHASE 121

APPROVED

APPROVED: FOR PUBLIC WATER AND PUBLIC SEWERAGE SYSTEMS HOWARD COUNTY HEALTH DEPARTMENT  
DATE: 7/6/74  
APPROVED: HOWARD COUNTY OFFICE OF PLANNING AND ZONING  
DATE: 2-6-74  
APPROVED: FOR PUBLIC WATER, PUBLIC SEWERAGE AND STORM DRAINAGE SYSTEMS & ROADS HOWARD COUNTY DEPARTMENT OF PUBLIC WORKS  
DATE: 7/5/74  
APPROVED: CHIEF BUREAU OF HIGHWAYS  
DATE: 1/28/74

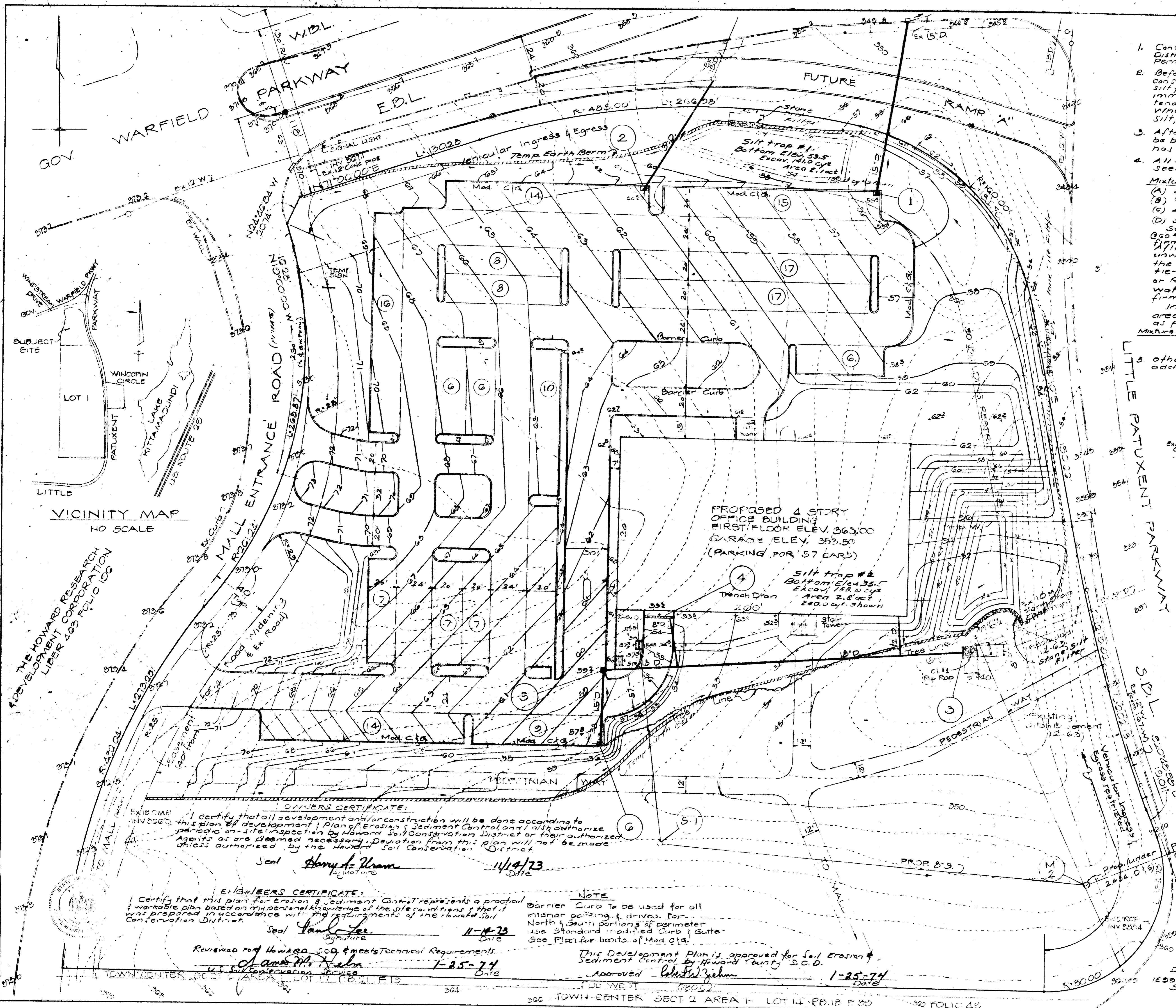
DATE: 1/9/74  
Election District N<sup>o</sup> 5 Howard County  
Scale: Hor. = 1" = 50'  
Vert. = 1" = 5'  
Date: Sept. 27, 1973  
Rev. Oct. 31, 1973

DEVELOPER:  
Della Rotta, INC.  
1200 Lambert Drive  
Silver Spring, Md.  
20910



MCA ENGINEERING CORPORATION  
CONSULTING ENGINEERS  
1020 Cromwell Bridge Rd. Baltimore, Md.

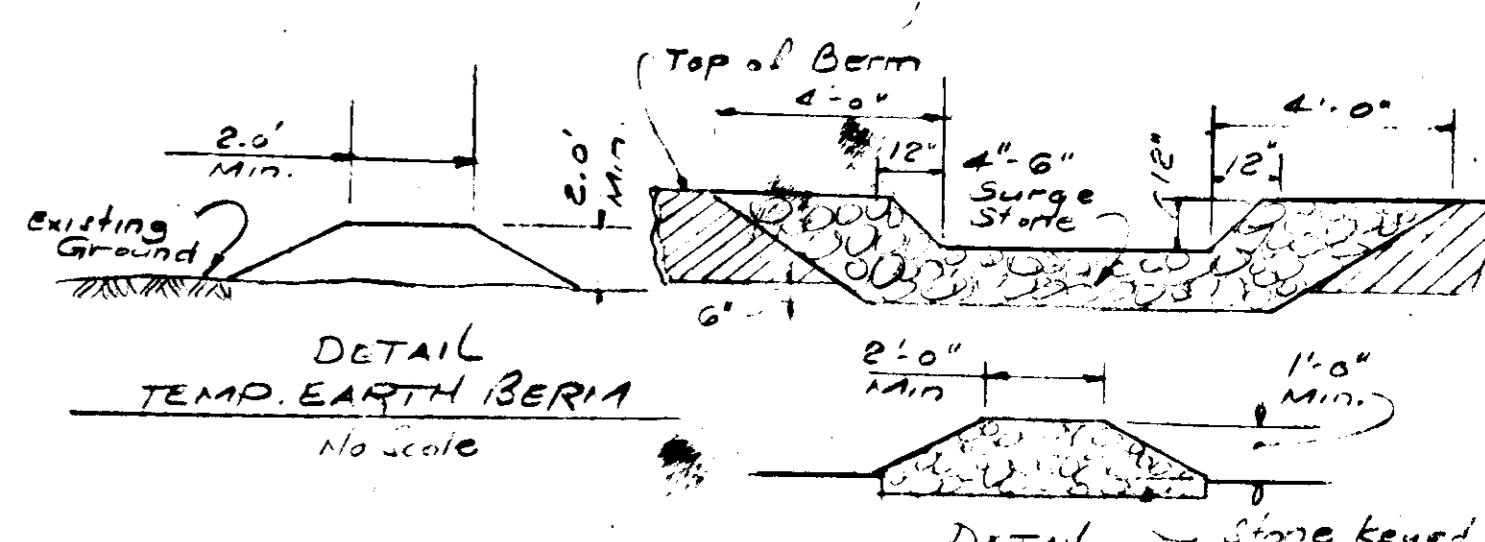
SAP 74-33C



**SEDIMENT CONTROL NOTES**

- Contractor to notify the Howard County Soil Conservation District & The Howard Co. Bureau of Licenses, Inspection & Permits 24 hrs. prior to starting grading operations.
  - Before general Grading operations begin, Contractor shall construct temporary earth berms & silt traps with stone silt filters. Temp. earth berms are to be seeded & mulched immediately, using mixture #2 listed below. Constant maintenance is required for earth berms & stone silt filters. When stone used as filter becomes clogged with silt, stone shall be removed & replaced.
  - After construction of on site storm drains, inlets are to be boarded & kept inoperative until base course of paving has been placed.
  - All areas not stabilized by building or paving to be seeded & mulched.
- Mixture #1 SEED BED PREPARATION (per acre)
- (A) 2 Tons Limestone
  - (B) 600 lbs. 0-20-20 work'n 3' depth
  - (C) 400 lbs. 33-0-0 area form fertilizer
  - (D) 500 lbs. 10-20-20
- Seed used shall be mixture of Kentucky 31 Tall Fescue @ 60% / Ac. & Kentucky Blue Grass @ 40% / Ac. Applied to a firm moist seedbed.
- After seeding, uniformly mulch these areas with unweathered small grain straw (preferably wheat) @ the rate of 1.5 Tons / Ac. After mulching use asphalt tie-down (Liquid asphalt) rapid curing (RC-70 RC-250, or RC-800) applied @ 0.1 gal / sq. yd. Seeded areas to be watered as necessary until plant growth has been firmly established.
- In addition to the seeded preparation for the above areas, the Silt Trap Slopes shall be treated as follows:
- Mixture #2 60 lbs Kentucky 31 Tall Fescue / Ac.  
 2000 lbs / Ac Limestone  
 1000 lbs / Ac. 5-10-10  
 Mulching: 10 Tons / Ac. of asphalt tie-down @ 0.1 gal / sq. yd.
- Other Sediment Control measures may be necessary in addition to those outlined if inspection so deems.

LITTLE PATUXENT PARKWAY



**NOTE:**  
 Acreages shown at silt traps #1 & #2 represent maximum possible contributions composed of both existing & proposed contours, and are overlapping areas.

**SEDIMENT CONTROL PLAN**  
 TOWN CENTER - SECT 2, AREA 3 - PARCEL A  
 MALL NORTH OFFICE BUILDING  
 TAX MAP N.P. 30 PDP PHASE 1/21

ELECT. DIST. 5 HOWARD COUNTY, MD.  
 SCALE: 1"=30' NOV. 3, 1973

APPROVED FOR PUBLIC WATER AND PUBLIC SEWERAGE SYSTEMS, HOWARD COUNTY HEALTH DEPARTMENT	<i>[Signature]</i> M.D.	2/6/74
COUNTY HEALTH OFFICER		DATE
APPROVED HOWARD COUNTY OFFICE OF PLANNING & ZONING	<i>[Signature]</i>	2-6-74
PLANNING DIRECTOR		DATE
CHIEF, DIVISION OF LAND DEVELOPMENT AND TRANSPORTATION PLANNING	<i>[Signature]</i>	2/7/74
DATE		
APPROVED FOR PUBLIC WATER, PUBLIC SEWERAGE AND STORM DRAINAGE SYSTEMS & ROADS, HOWARD COUNTY DEPARTMENT OF PUBLIC WORKS	<i>[Signature]</i>	2/5/74
DIRECTOR		DATE
CHIEF, BUREAU OF HIGHWAYS	<i>[Signature]</i>	1/28/74
		DATE

**APPROVED**  
 PLANNING BOARD  
 OF HOWARD COUNTY

DATE 1/9/74  
*[Signature]*

**OWNERS CERTIFICATE:**  
 I certify that all development and/or construction will be done according to this plan of development, Plan of Erosion & Sediment Control, and I also authorize periodic on-site inspection by Howard Soil Conservation District or their authorized Agents as are deemed necessary. Deviation from this plan will not be made unless authorized by the Howard Soil Conservation District.

Seal *[Signature]* 11/4/73  
 Date

**ENGINEERS CERTIFICATE:**  
 I certify that this plan for Erosion & Sediment Control represents a practical & workable plan based on my personal knowledge of the site conditions & that it was prepared in accordance with the requirements of the Howard Soil Conservation District.

Seal *[Signature]* 11-4-73  
 Date

**NOTE:**  
 Barrier Curb to be used for all interior parking & drives. For North & South portions of perimeter use standard modified curb & gutter. See Plan for limits of Mod. Curb.

Reviewed for Howard Co. & meets Technical Requirements  
*[Signature]* 1-25-74  
 U.S. Soil Conservation Service Date

This Development Plan is approved for Soil Erosion & Sediment Control by Howard County S.C.D.  
 Approved *[Signature]* 1-25-74  
 Date

**DEVELOPER**  
 DELLA RATTA, INC.  
 1000 Lomberton Drive  
 Silver Spring, Md 20910

**ENGINEER**  
 M.C.A. Engineering Corporation  
 1020 Cromwell Bridge Rd.  
 Towson, Md. 21204