

# HARPERS GLEN TOT LOT SITE DEVELOPMENT PLAN

REVIEWED FOR HOWARD SCD.  
AND MEETS TECHNICAL REQUIRE-  
MENTS.

SIGNATURE \_\_\_\_\_ DATE \_\_\_\_\_  
U.S. SOIL CONSERVATION SERVICE

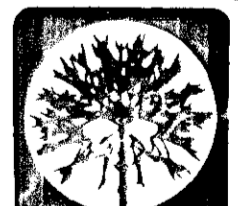
THIS DEVELOPMENT PLAN IS APPROVED  
FOR SOIL EROSION AND SEDIMENT  
CONTROL BY THE HOWARD SOIL  
CONSERVATION DISTRICT.

APPROVED: HOWARD SCD. DATE \_\_\_\_\_

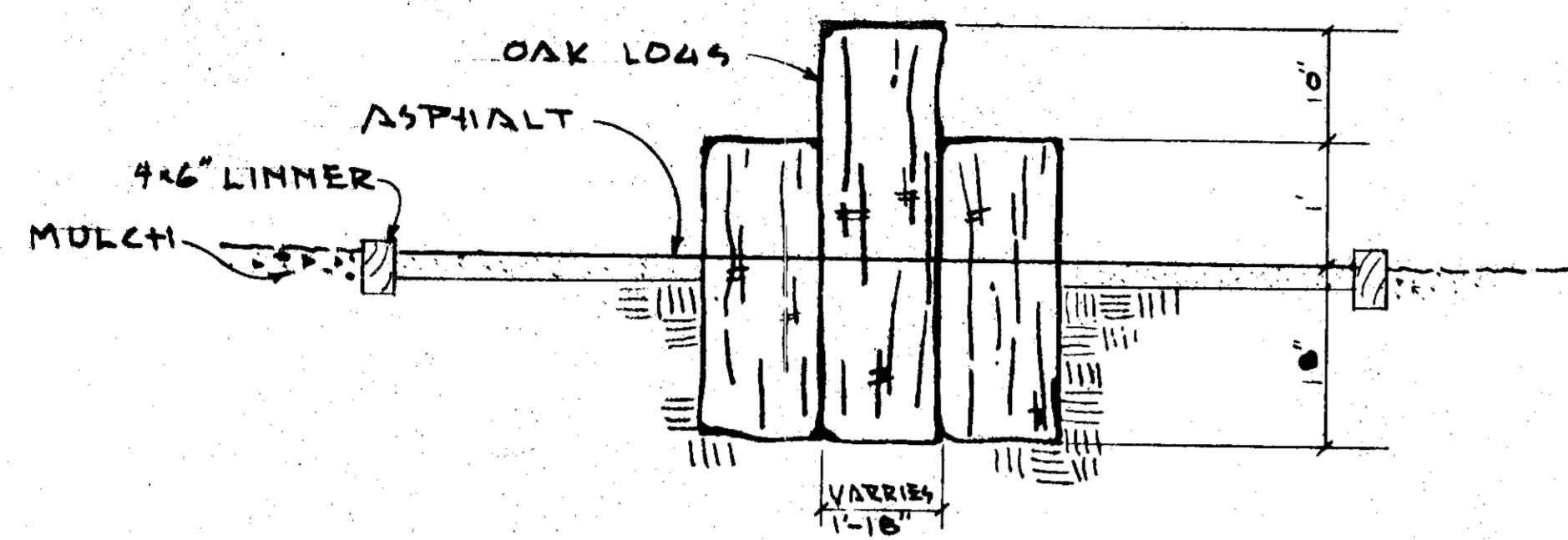
NOTE

- THE 100 YR FLOOD PLAIN IS NO WHERE NEAR TOT LOT AREA AND IS THEREFORE NOT A CONSIDERATION FOR THIS TOT LOT.
- THIS TOT LOT IS LOCATED ON COLUMBIA OPEN SPACE DESIGNATED FOR A MINI BUS TRANSIT SYSTEM. THE COLUMBIA ASSOC. WILL REMOVE THIS TOT LOT IF AND WHEN THE MINI BUS TRANSIT SYSTEM IS IMPLEMENTED.

*M. J. Kelly* D.R. PH. Planning 10-4-73  
APPROVED  
DIVISION OF LAND DEVELOPMENT  
AND TRANSPORTATION PLANNING  
HOWARD COUNTY, MARYLAND  
9/4/73  
*J. R. ...*

APPROVED For Public, Private Water and Public Private Sewerage Systems, Howard County Health Department  County Health Officer _____ Date _____		OWNER: COLUMBIA PARK & RECREATION ASSN., INC. 1000 Century Plaza 10630 Little Patuxent Parkway Columbia, Maryland 21044 Telephone (301) 730-6100
APPROVED Howard County Office of Planning & Zoning <i>James W. ...</i> 10-8-77 Planning Director Date		OPEN SPACE LOT NO. <u>12</u> OPEN SPACE AREA <u>1.31 ACRES</u> VILLAGE OF <u>HARPERS CHOICE</u> SECTION <u>3</u> AREA <u>2</u> <u>5</u> th ELECTION DISTRICT HOWARD COUNTY, MARYLAND
APPROVED For Public Water, Public Sewerage and Storm Drainage Systems and Roads Howard County Department of Public Works <i>William A. ...</i> 9/24/73 Director Date		<b>COLUMBIA MARYLAND</b>  <b>COLUMBIA ASSOCIATION</b>
APPROVED For Public Water, Public Sewerage and Storm Drainage Systems and Roads Howard County Department of Public Works <i>William A. ...</i> 9/24/73 Director Date		PROJECT TITLE: <b>HARPERS GLEN TOT LOT</b> SUBJECT: <b>SITE DEVELOPMENT PLAN</b>
APPROVED For Public Water, Public Sewerage and Storm Drainage Systems and Roads Howard County Department of Public Works <i>William A. ...</i> 9/24/73 Director Date		SCALE 1" = 100' DATE 7-3-73 DES. BY DE DWN. BY DE CK. BY DE APP. BY _____ DWG. NO. <b>1</b> OF 2 CAF NO. _____

SDP. 74-17C



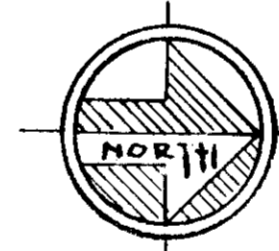
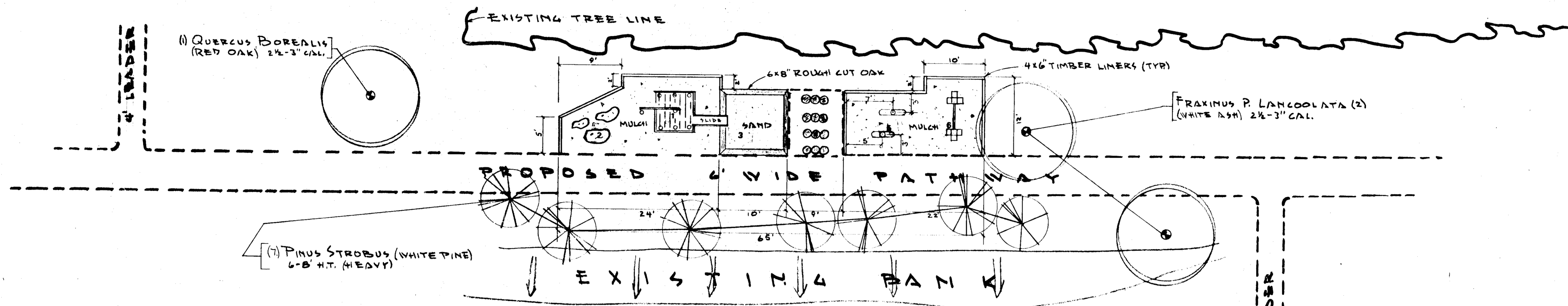
SITTING LOG DETAIL  
SCALE: 3/8"=1'

**EQUIPMENT:**

1. FORT 101 + SLIDE
2. LARGE PLAY ROCKS
3. SAND BOX # 117
4. SITTING LOGS
5. SPRING ANIMALS
6. FORM # TF-427

**NOTES:**

- ALL PLANTING TO BE AS PER COLUMBIA SPECS
- BACKFILL + SEED TO LINERS



APPROVED  
DIVISION OF LAND DEVELOPMENT  
AND TRANSPORTATION PLANNING  
HOWARD COUNTY, MARYLAND  
DATE: 9/24/73



*[Signature]*

# HARPERS GLEN TOT-LOT

<b>APPROVED:</b>		<b>COLUMBIA MARYLAND</b>	
HOWARD CO. DEPT. OF PUBLIC WORKS		<b>COLUMBIA ASSOCIATION</b>	
FOR PUBLIC WATER, PUBLIC SEWERAGE AND STORM DRAINAGE SYSTEMS + ROADS		PROJECT TITLE: HARPERS GLEN TOT-LOT	
WILLIAM A. ALLEN DIRECTOR		SUBJECT: PLAN + DETAILS	
9/23/73 DATE		SCALE: 1/8"=1'	DWG. NO.
9/24/73 DATE		DATE: 6-15-73	2
S. M. NEWMAN CHIEF BUREAU OF HIGHWAYS		DES. BY: D.E.	of 2
		DWN. BY: D.F.	
		APP. BY:	CAD. NO.:

348 BALTIMORE 10785 ALBANY, N.Y. 12212