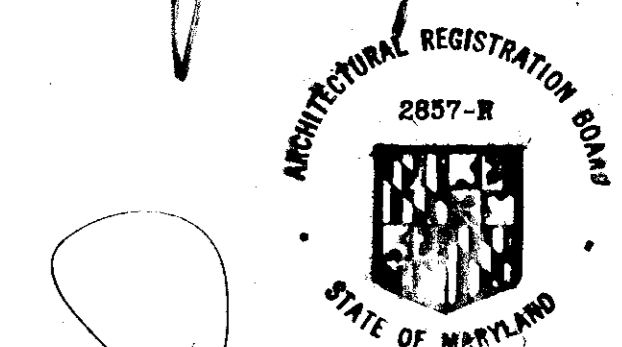


NOTE:
THE 100 YEAR FLOOD PLAIN
LIMIT IS NOWHERE NEAR THE
AREA OF THIS PROJECT
THEREFORE IS NOT A CONSID-
ERATION.

APPROVED
DIVISION OF LAND DEVELOPMENT
AND TRANSPORTATION PLANNING
HOWARD COUNTY, MARYLAND
DATE 8/22/73
J.K.C.



SDP-74-12c

OWNER: COL PARK-RECREATION ASSN
1000 CENTURY PLAZA
10650 LITTLE PATUKENT
PARKWAY
COLUMBIA MD 21044

OPEN SPACE LOT 45
OPEN SPACE AREA 1268 AC
VIL. OF HARBERS CHOICE
SECTION 4
AREA 1
SELECTION DIST
HOWARD CO, MARYLAND

COLUMBIA
MARYLAND



PROJECT TITLE
NOAH'S ARK PLAY HOUSE
SUBJECT:
SITE DEVELOPMENT PLAN
SCALE 1"=100' DWG. NO.
DATE 7-20-73 1 of 3
DES BY D.B.
DWN BY DE
CK BY
APP BY CAF NO.

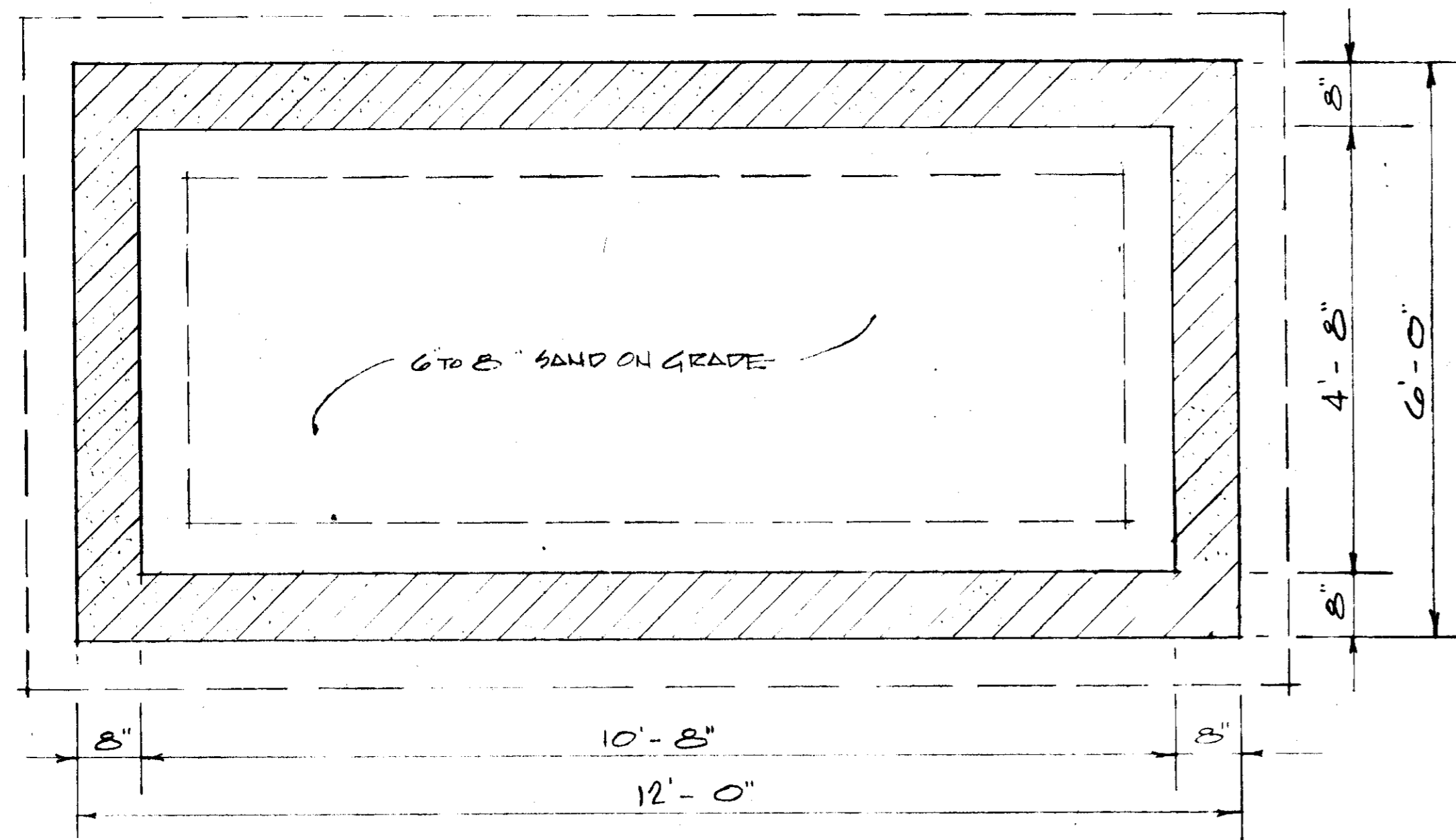
APPROVED For Public/Private Water and Public
Private Sewerage Systems, Howard
County Health Department
County Health Officer _____ Date _____

APPROVED Howard County Office of Planning & Zoning
James J. Haniff 9-27-73
Planning Director Date
J.K.C. 9/27/73
Chief, Division of Land Development and
Transportation Planning Date

APPROVED For Public Water, Public Sewerage
and Storm Drainage Systems and Roads
Howard County Department of Public Works
William J. Altman 9/10/73
Director Date
J. M. McNeill 9/10/73
Chief, Bureau of Highways Date

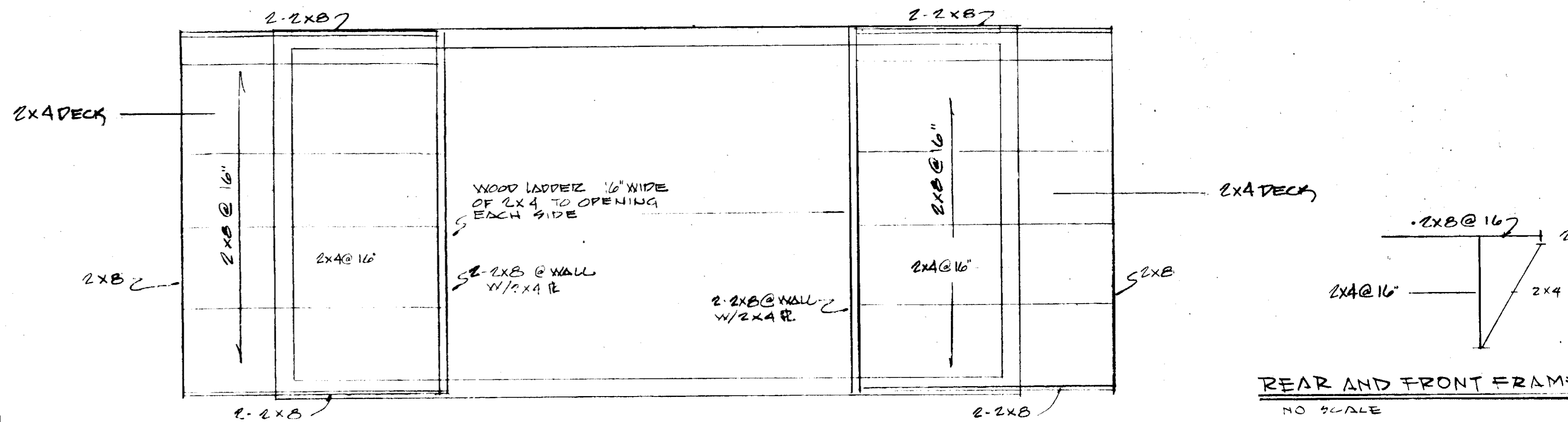
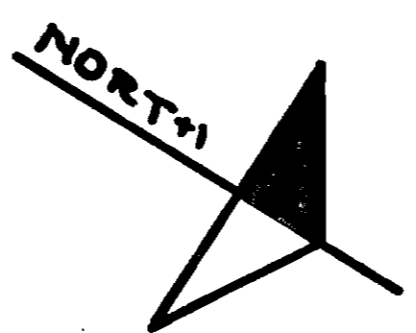
SITE DEVELOPMENT PLAN

SDP 74-12c



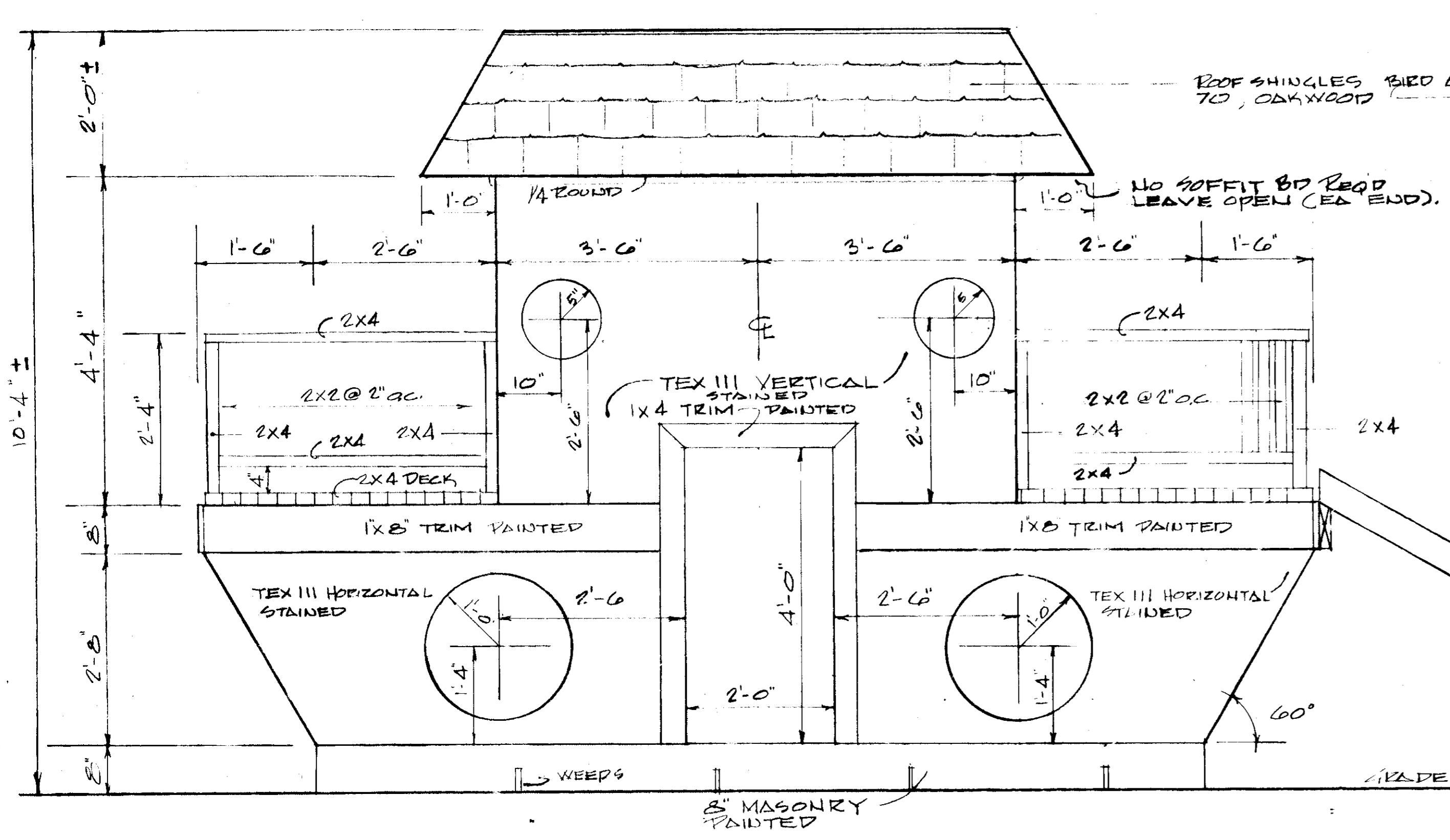
FOUNDATION PLAN

SCALE: 3/4" = 1'-0"



FRAMING PLAN

NOAH'S ARK



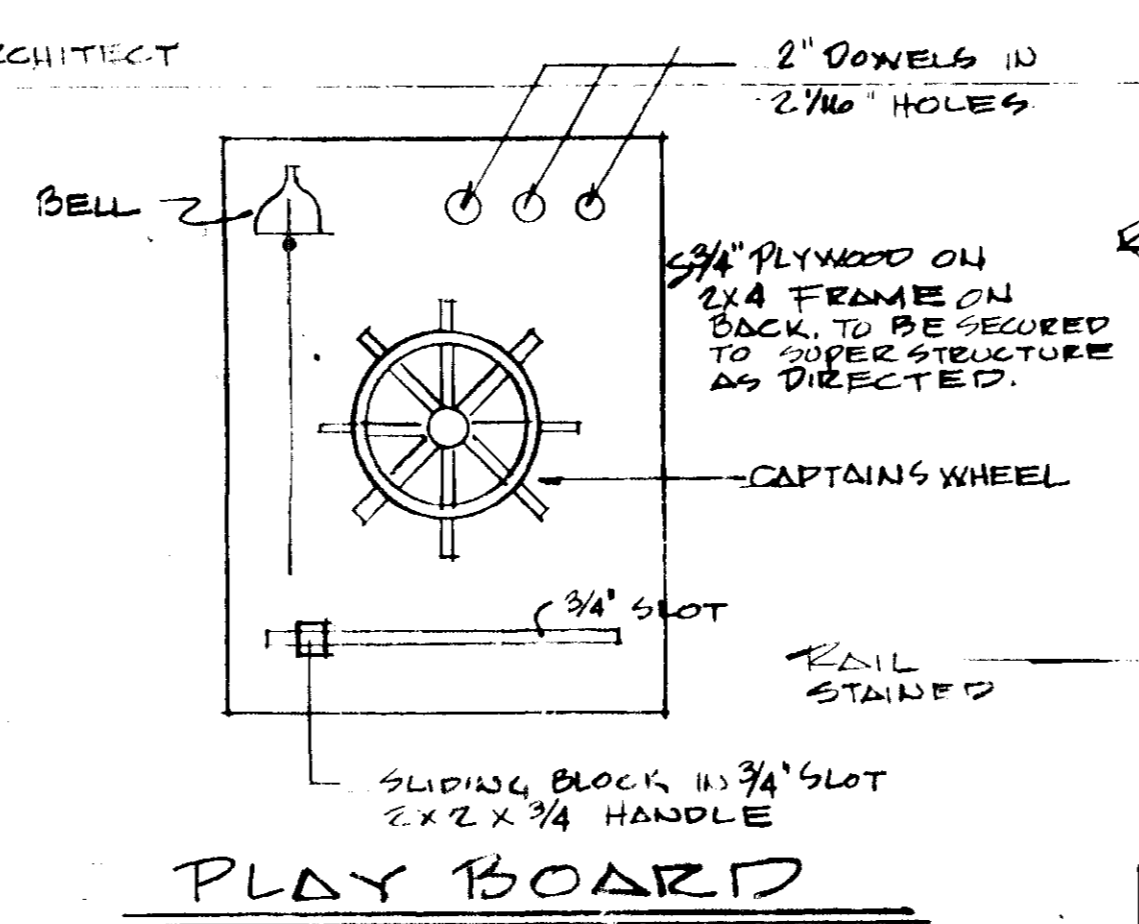
SIDE ELEVATION

SCALE: 3/4" = 1'-0"

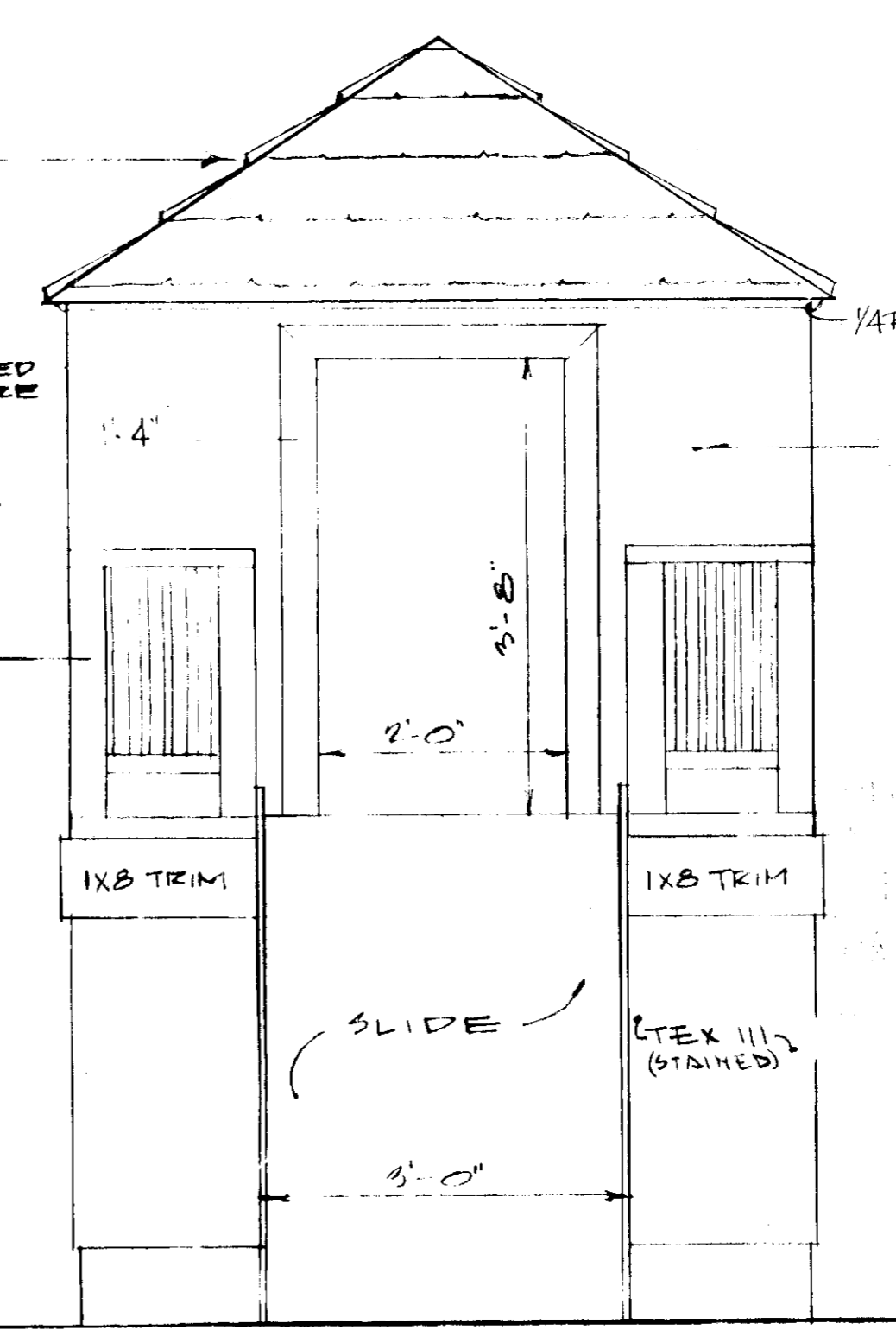
(NOTE: OTHER SIDE ELEVATION SAME)

NOTE:

- ALL LUMBER TO BE 1500 PSI
- FIR TREATED
- CONC. 2500 PSI @ 28 DAYS
- TEX III FIR
- ALL WORK TO BE IN ACCORDANCE WITH LOCAL CODES
- ALL SURFACES TO BE STAINED OR PAINTED TWO COATS



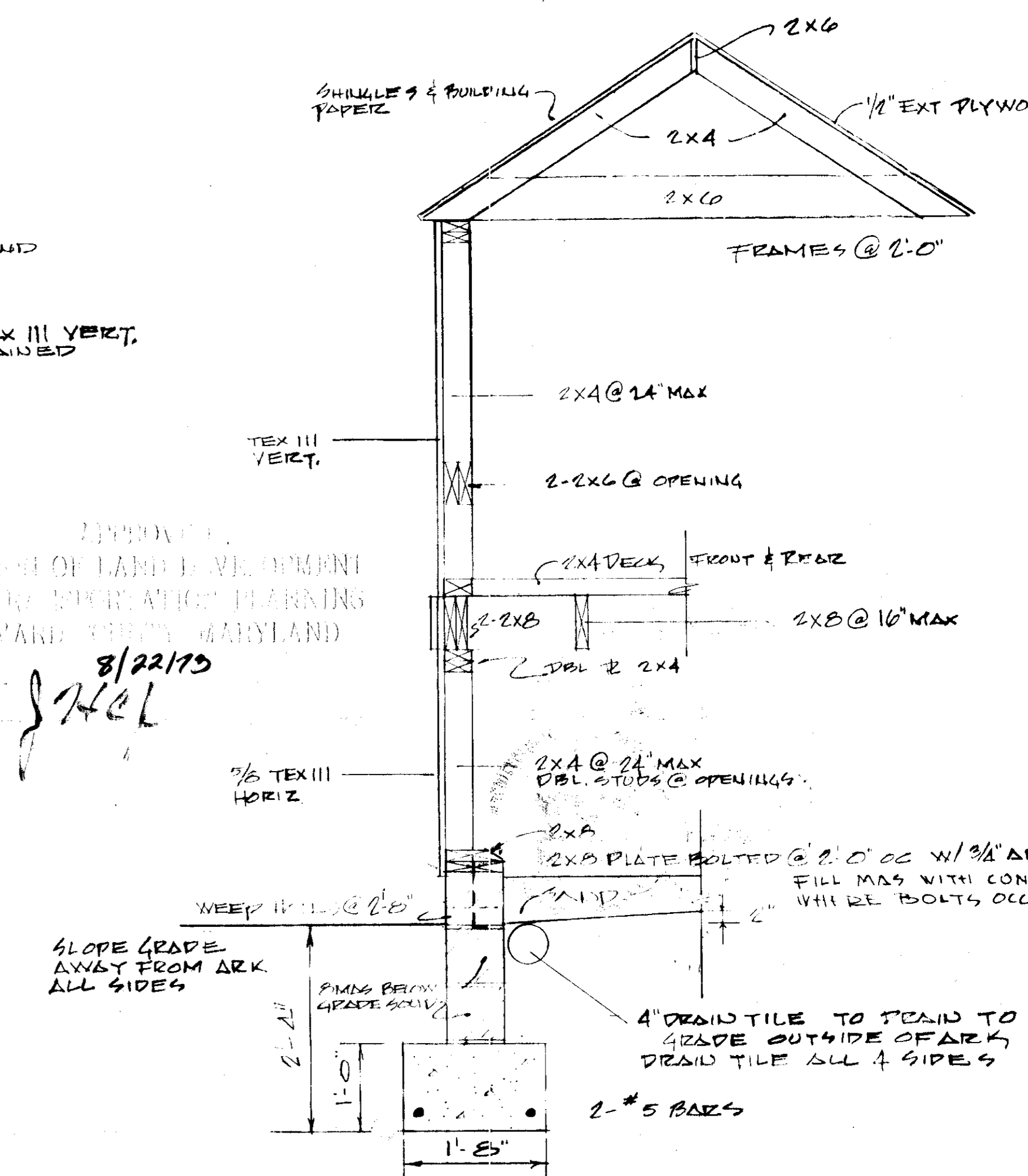
PLAY BOARD



FRONT ELEVATION

SCALE: 3/4" = 1'-0"

(REAR ELEVATION SIMILAR TO FRONT EXCEPT NO SLIDE, RAIL TO CONT.)

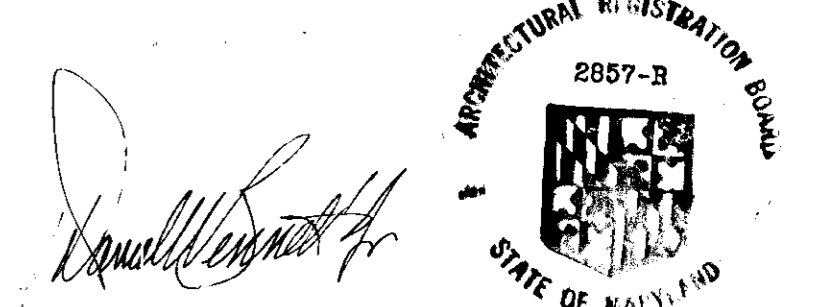


SECTION (HALF)

SCALE: 3/4" = 1'-0"

APPROVED: For Public Water, Public Sewerage, Storm Drainage Systems and Bldgs
 William D. Allen, 9/14/73, DATE
 DIRECTOR
 Howard Co. DEPT. PUBLIC WORKS
 J. H. McLeod, 9/10/73, DATE
 CHIEF BUREAU OF HIGHWAYS

APPROVED: FOR THE USE OF LAND LEVEL, DRAINAGE AND PUBLIC UTILITIES PLANNING
 HOWARD COUNTY, MARYLAND
 8/22/73
 J. H. McLeod

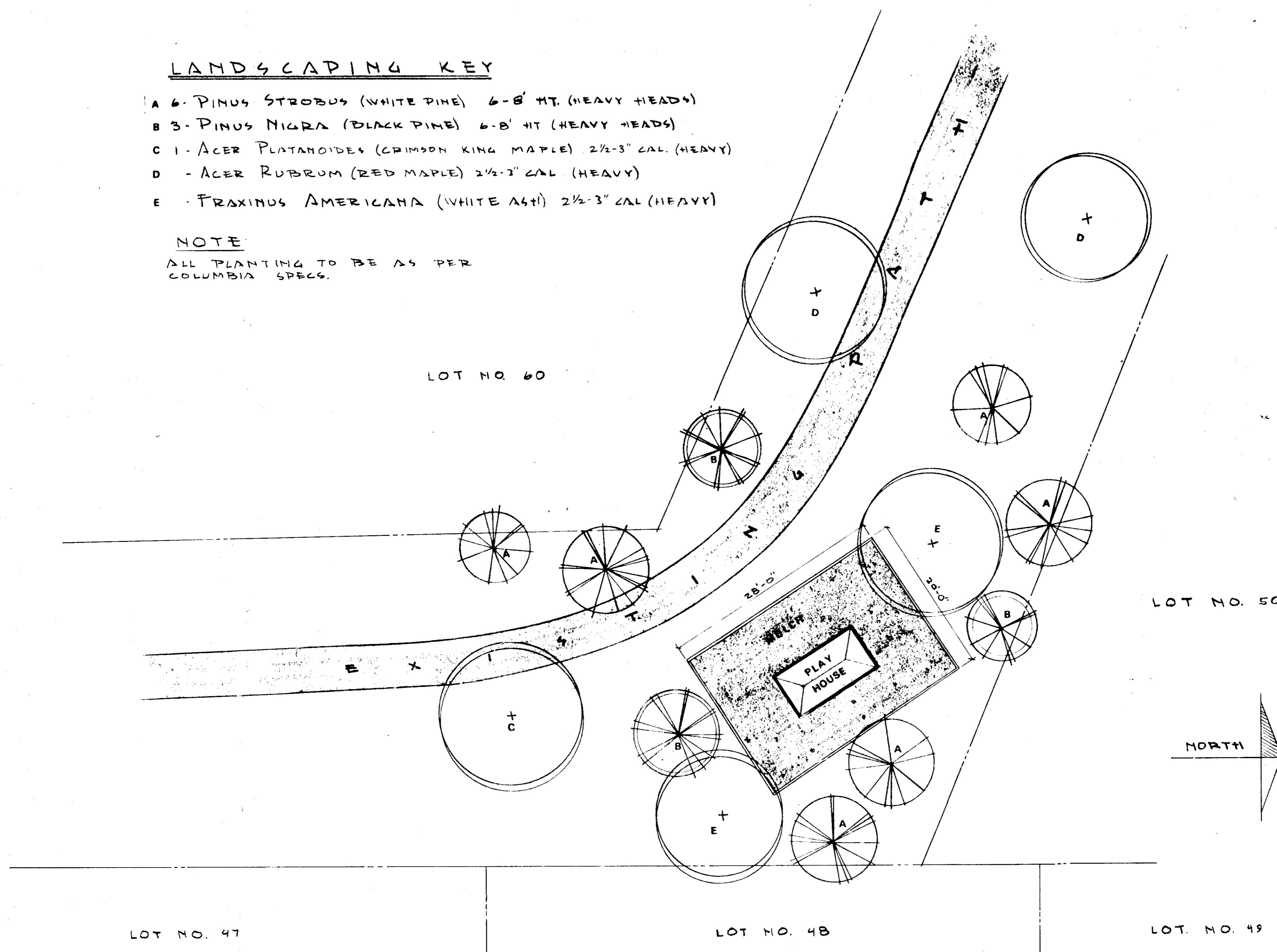


LANDSCAPING KEY

- A 6- PINUS STROBUS (WHITE PINE) 6-8' HT. (HEAVY HEADS)
- B 3- PINUS NIGRA (BLACK PINE) 6-8' HT (HEAVY HEADS)
- C 1- ACER PLATANOIDES (CRIMSON KING MAPLE) 2 1/2-3" CAL. (HEAVY)
- D - ACER RUBRUM (RED MAPLE) 2 1/2-3" CAL. (HEAVY)
- E - FRAXINUS AMERICANA (WHITE ASH) 2 1/2-3" CAL (HEAVY)

NOTE

ALL PLANTING TO BE AS PER COLUMBIA SPECS.



APPROVED
DIVISION OF LAND DEVELOPMENT
AND TRANSPORTATION PLANNING
HOWARD COUNTY, MARYLAND
DATE: 9/22/73


J. Kelly



Daniel M. Smith Jr.

APPROVED: For Public Utilities, Public Sewerage, Storm Drainage Systems and Roads
HOWARD CO. DEPT. OF PUBLIC WORKS
Wick - A. Altman 9/18/73
DIRECTOR DATE
J. M. McKeand 9/18/73
CHIEF BUREAU OF HIGHWAYS DATE

COLUMBIA MARYLAND



COLUMBIA ASSOCIATION

PROJECT TITLE:		DWS. NO. 3 of 3
NOAH'S ARK PLAY HOUSE		
SUBJECT:		
LANDSCAPING PLAN		
SCALE	1/8" = 1'-0"	
DATE	9-5-73	
DES. BY	D.E.	
DWN. BY	D.E.	
CHK. BY		
APP. BY		

LANDSCAPING FOR NOAH'S ARK