

HOWARD SOIL CONSERVATION DISTRICT
 This development plan has been approved for soil erosion and sediment control by the HOWARD SOIL CONSERVATION DISTRICT.

APPROVED: *Robert W. Ziehm* 10-28-73
 Howard Soil Conservation District Date

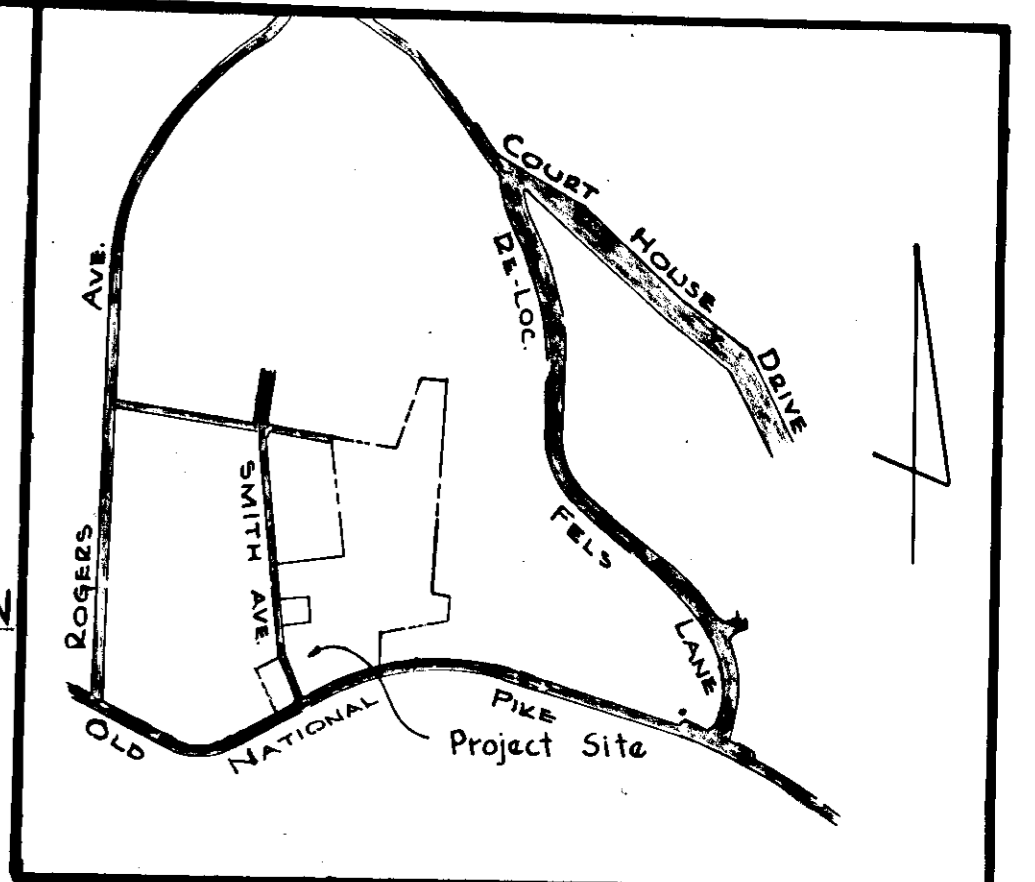
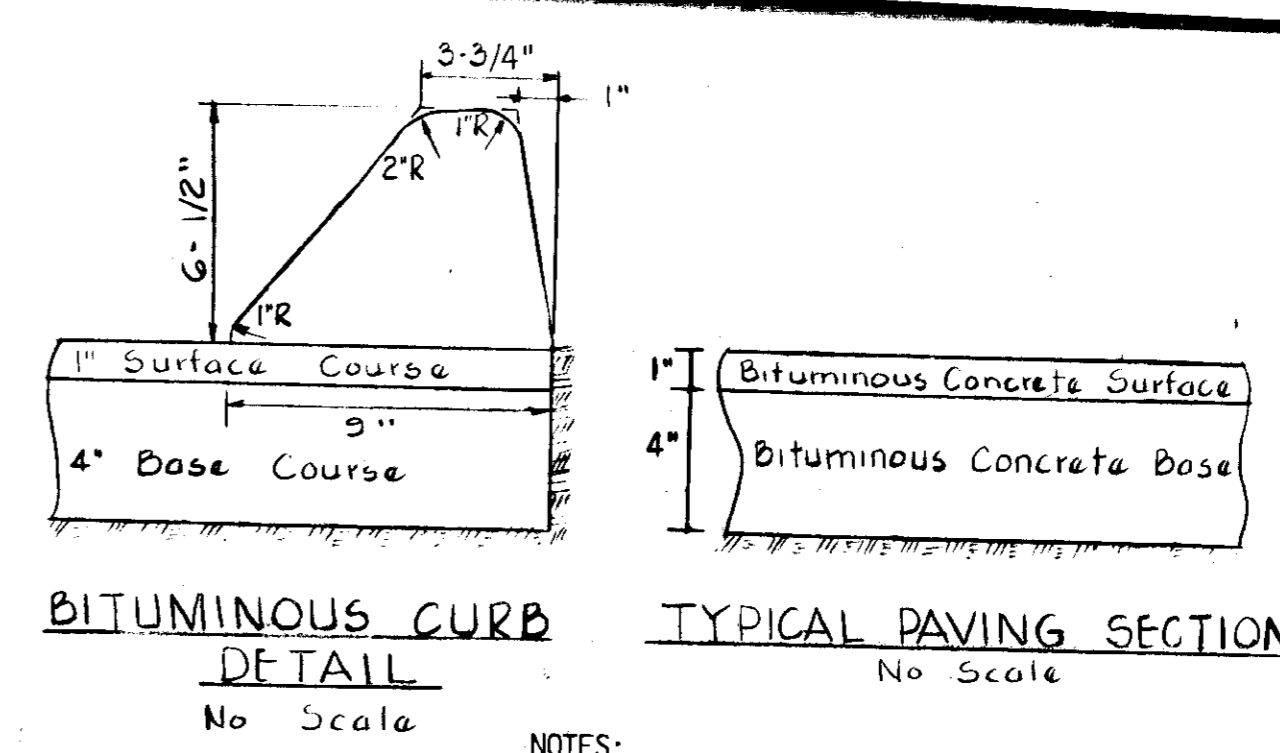
Reviewed for Howard Soil Conservation District and meets Technical Requirements
James P. Nelson 10-28-73
 U.S. Soil Conservation Service Date

DEVELOPER
 I certify that all development and/or construction will be done according to the plan of development and the plan of soil erosion and sediment control.

Charles A. Klein 10/28/73
 Signature Date

SEDIMENT CONTROL NOTES

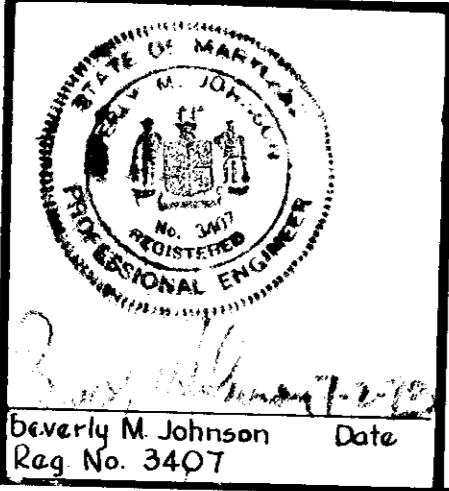
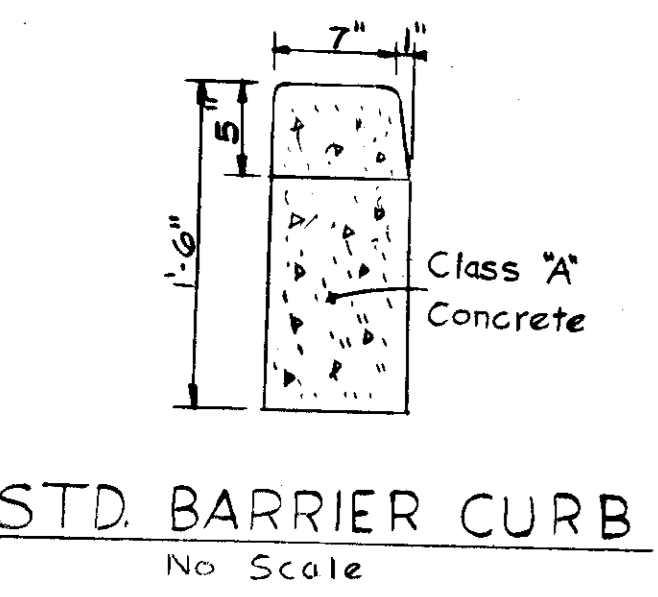
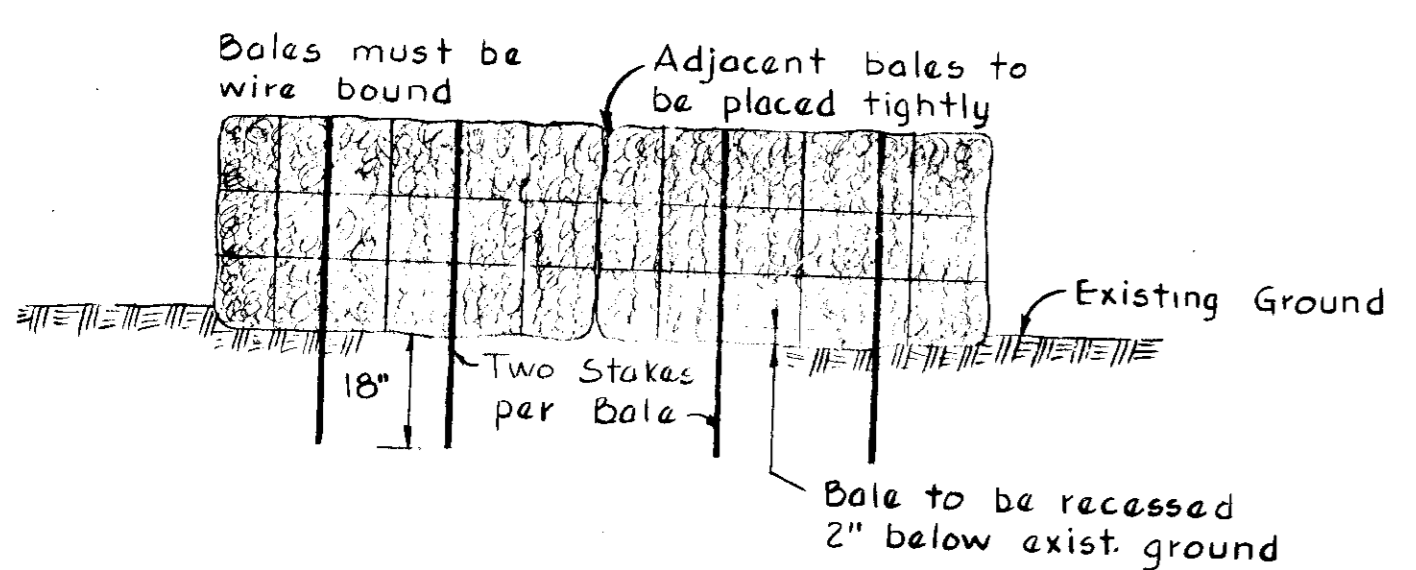
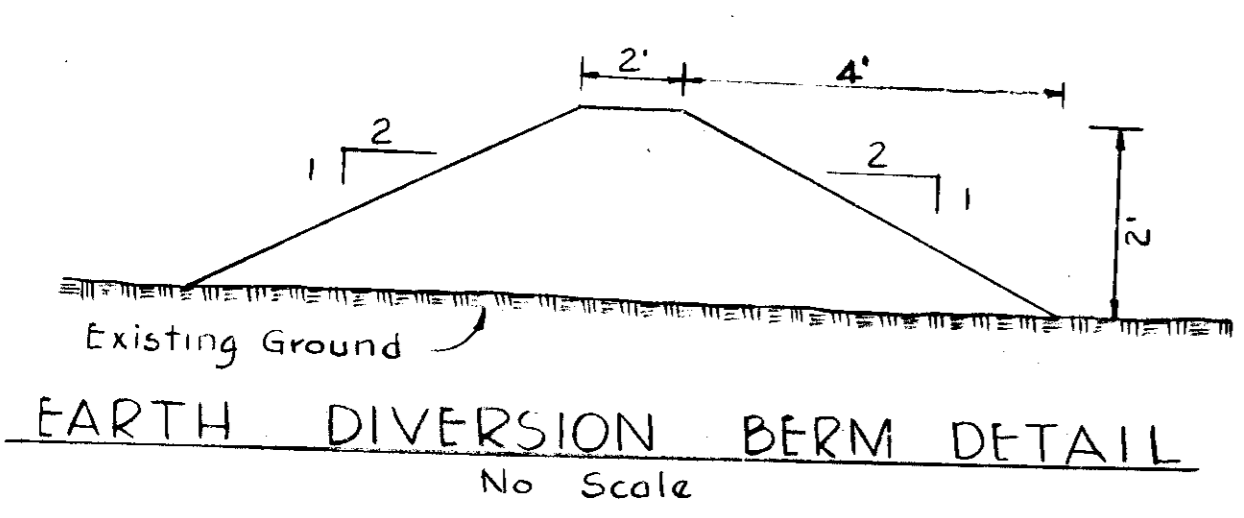
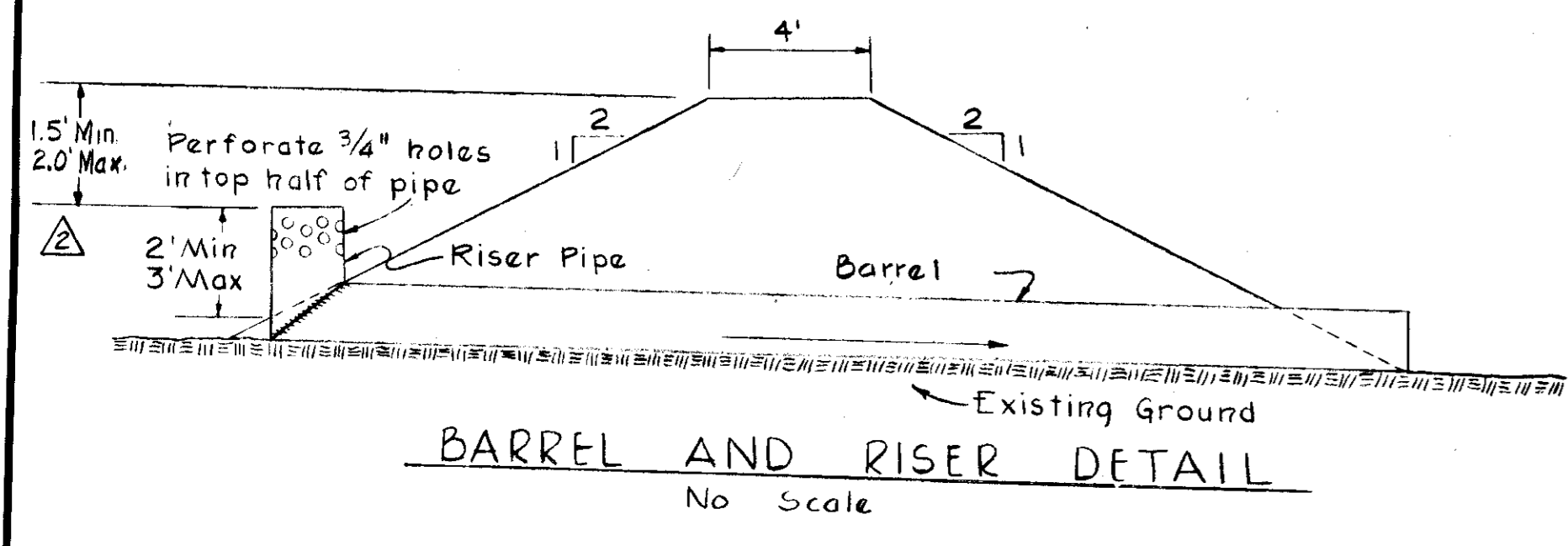
- The Developer shall notify the Howard Soil Conservation District at least 24 hours prior to beginning any construction shown hereon.
- Sediment control measures must be installed and stabilized prior to grading operation.
- All disturbed areas shall be stabilized by seeding according with the following:
 - spread pulverized dolomitic limestone at the rate of 1 ton/acre. Disc into topsoil to a depth of 3".
 - spread 5-10 commercial grade fertilizer at the rate of 600 lbs/acre and immediately disc into topsoil to a depth of 3".
 - seed prepared areas at the rate of 40 lbs/acre using Annual Rye.
 - mulch all areas immediately after seeding with un-weathered small grain straw at the rate of 1.5 tons/acre, spray mulch with emulsified asphalt at the rate of 0.24 gals./sq.yd.
- Sediment control measures shown on this plat shall not be removed except with permission of the Soil Conservation Service.



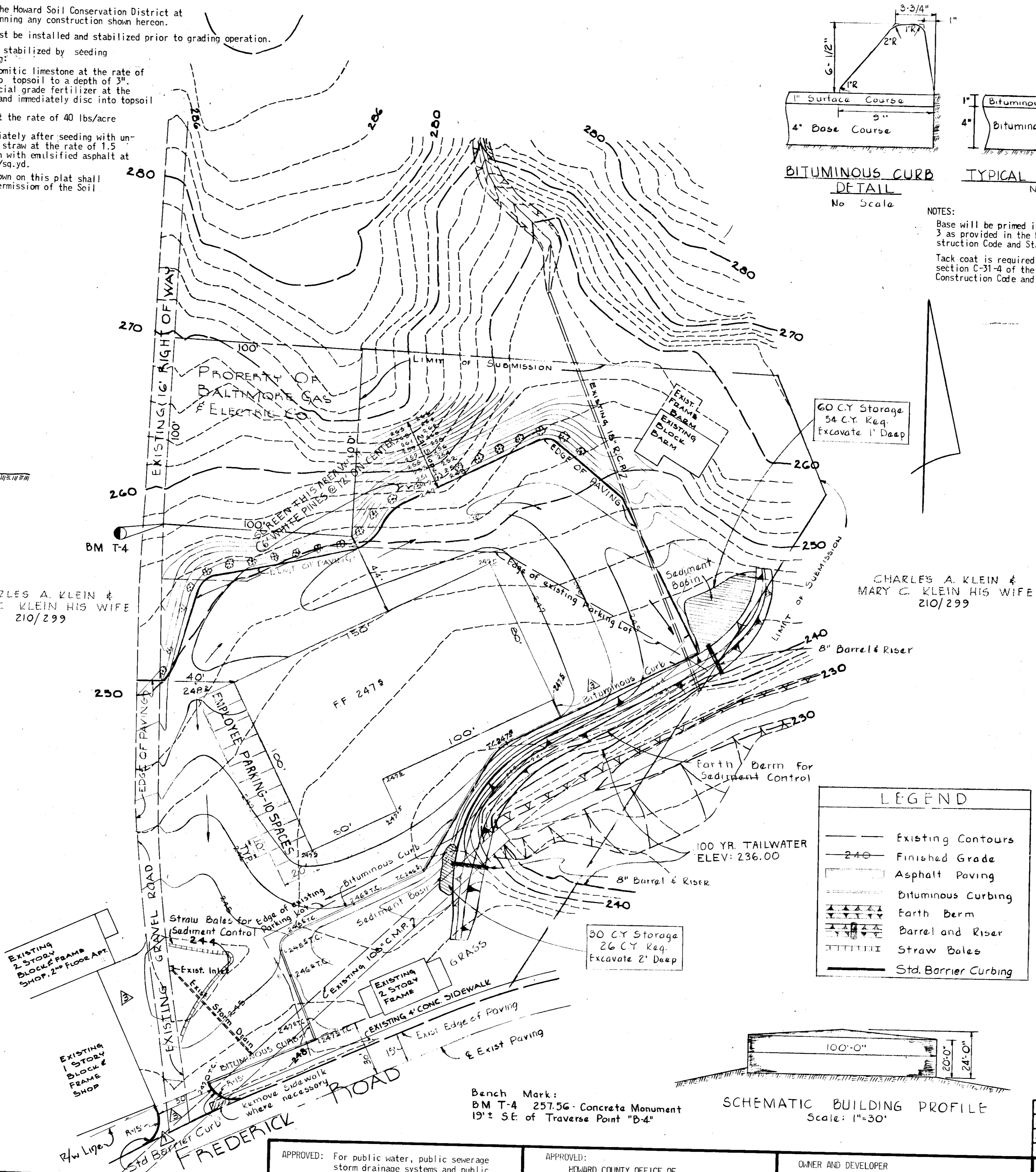
NOTES:
 Base will be primed in accordance with C-30-3 as provided in the Howard County Road Construction Code and Standard Specifications.
 Tack coat is required in accordance with section C-31-4 of the Howard County Road Construction Code and Standard Specifications.

GENERAL NOTES

- All materials and details shall be in accordance with the latest revisions of the Howard County Road Construction Code and Standard Specifications.
- Public water and sanitary sewer facilities are available and adequate.
- All areas disturbed by grading of Contractors' operations, not being paved, shall be topsoiled, seeded and mulched in accordance with the following:
 - place 3" layer of topsoil to finished grade
 - spread pulverized dolomitic limestone at the rate of 1 ton/acre. Disc into topsoil to a depth of 3".
 - spread 5-10 commercial grade fertilizer at the rate of 1000 lbs/acre and immediately disc into topsoil to a depth of 3".
 - seed prepared areas at the rate of 200 lbs/acre using Kentucky Fescue 31
 - mulch all areas immediately after seeding with un-weathered small grain straw or hay at the rate of 1.5 tons/acre, spray mulch with emulsified asphalt at the rate of 0.24 gals./sq.yd.
- Proposed grade contours represent finished grades, contractor shall make required allowances to subgrade for topsoil, paving and other surface finishes as required.
- Area of parcel = 2.2± Ac
- Underground facilities, structures and utilities have been plotted from available surveys and records and therefore their locations must be considered approximate only. The verification of the location of all underground facilities, structures and utilities either shown or not shown on these plans shall be the responsibility of the Contractor.
- All permanent slopes 3:1 or flatter shall be seeded and mulched or sodded. All slopes steeper than 3:1 shall be planted in accordance with the following:
 - place 3" layer of topsoil to finished grade
 - spread pulverized dolomitic limestone at the rate of 1 ton/acre. Disc into topsoil to a depth of 3".
 - spread 5-10 commercial grade fertilizer at the rate of 1000 lbs/acre and immediately disc into topsoil to a depth of 3".
 - seed prepared areas with Crownvetch, inoculated Kentucky 31 tall fescue and 40 lb/acre of Kentucky 31 tall fescue.
 - mulch all areas immediately after seeding with un-weathered small grain straw or hay at the rate of 1.5 tons/acre, spray mulch with emulsified asphalt at the rate of 0.24 gals./sq.yd.
- Total Area of floor: 13,000 square feet
- Number of Employees - 10
 Number of Parking Spaces Required - 5
 Number of Parking Spaces Provided - 10
- Present Zoning - R-20
 Non-conforming use granted Case No. 729

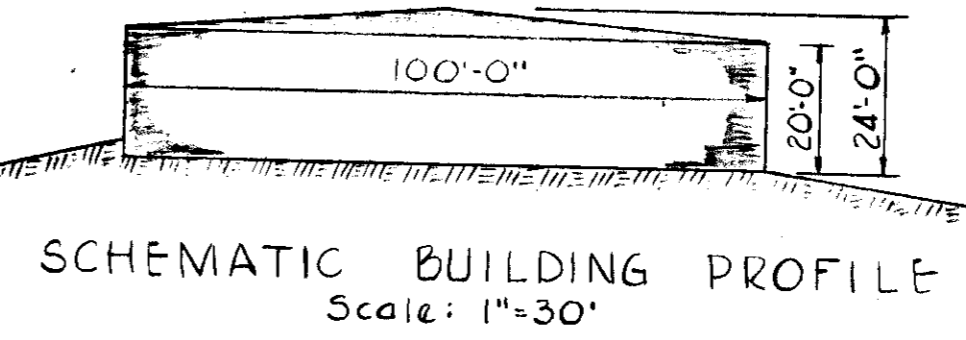


PROFESSIONAL ENGINEER
 I certify that this plan for Erosion and Sediment Control represents a practical and workable plan based upon my personal knowledge of the site condition and that it was prepared in accordance with the requirements of the Howard Soil Conservation District.



LEGEND

—	Existing Contours
—	Finished Grade
—	Asphalt Paving
—	Bituminous Curbing
—	Earth Berm
—	Barrel and Riser
—	Straw Bales
—	Std. Barrier Curbing



APPROVED: For public water, public sewerage storm drainage systems and public roads. HOWARD COUNTY DEPARTMENT OF PUBLIC WORKS
William A. Alt 10/29/73
 Director Date

J. B. Meadows 10/26/73
 Chief, Bureau of Highways Date

APPROVED: HOWARD COUNTY OFFICE OF PLANNING AND ZONING.
Thomas J. Amiot 11-2-73
 Planning Director Date

W. H. Clawson 11/2/73
 Chief, Division of Land Development and Transportation Planning Date

OWNER AND DEVELOPER
 Charles A. Klein, Sr.
 8590 Frederick Road
 Ellicott City, Maryland 21043

APPROVED: For public water & public sewerage systems. HOWARD COUNTY HEALTH DEPARTMENT
James W. D. 11/1/73
 County Health Officer Date

Date	No.	Revision Description
8-14-73	1	Revisions per Howard County comments of 8-14-73
8-6-73	2	Revisions per Howard Soil Conservation of 8-2-73
8-6-73	3	Revisions per Ho. Co. comments of 7-26-73

SITE DEVELOPMENT PLAN
KLEIN PROPERTY
 2ND ELECTION DIST. - HOWARD COUNTY, MD.
 SCALE: 1"=30' JUNE, 1973