

APPROVED FOR PUBLIC WATER AND PUBLIC SEWERAGE SYSTEMS, HOWARD COUNTY HEALTH DEPARTMENT

APPROVED: HOWARD COUNTY OFFICE OF PLANNING & ZONING

APPROVED: FOR PUBLIC WATER AND PUBLIC SEWERAGE STORM DRAINAGE SYSTEMS AND PUBLIC ROADS, HOWARD COUNTY DEPARTMENT OF PUBLIC WORKS

APPROVED: FOR PUBLIC WATER AND PUBLIC SEWERAGE STORM DRAINAGE SYSTEMS AND PUBLIC ROADS, HOWARD COUNTY DEPARTMENT OF PUBLIC WORKS

APPROVED: FOR PUBLIC WATER AND PUBLIC SEWERAGE STORM DRAINAGE SYSTEMS AND PUBLIC ROADS, HOWARD COUNTY DEPARTMENT OF PUBLIC WORKS

APPROVED: FOR PUBLIC WATER AND PUBLIC SEWERAGE STORM DRAINAGE SYSTEMS AND PUBLIC ROADS, HOWARD COUNTY DEPARTMENT OF PUBLIC WORKS

APPROVED: FOR PUBLIC WATER AND PUBLIC SEWERAGE STORM DRAINAGE SYSTEMS AND PUBLIC ROADS, HOWARD COUNTY DEPARTMENT OF PUBLIC WORKS

APPROVED: FOR PUBLIC WATER AND PUBLIC SEWERAGE STORM DRAINAGE SYSTEMS AND PUBLIC ROADS, HOWARD COUNTY DEPARTMENT OF PUBLIC WORKS

APPROVED: FOR PUBLIC WATER AND PUBLIC SEWERAGE STORM DRAINAGE SYSTEMS AND PUBLIC ROADS, HOWARD COUNTY DEPARTMENT OF PUBLIC WORKS

APPROVED: FOR PUBLIC WATER AND PUBLIC SEWERAGE STORM DRAINAGE SYSTEMS AND PUBLIC ROADS, HOWARD COUNTY DEPARTMENT OF PUBLIC WORKS

APPROVED: FOR PUBLIC WATER AND PUBLIC SEWERAGE STORM DRAINAGE SYSTEMS AND PUBLIC ROADS, HOWARD COUNTY DEPARTMENT OF PUBLIC WORKS

APPROVED: FOR PUBLIC WATER AND PUBLIC SEWERAGE STORM DRAINAGE SYSTEMS AND PUBLIC ROADS, HOWARD COUNTY DEPARTMENT OF PUBLIC WORKS

APPROVED: FOR PUBLIC WATER AND PUBLIC SEWERAGE STORM DRAINAGE SYSTEMS AND PUBLIC ROADS, HOWARD COUNTY DEPARTMENT OF PUBLIC WORKS

APPROVED: FOR PUBLIC WATER AND PUBLIC SEWERAGE STORM DRAINAGE SYSTEMS AND PUBLIC ROADS, HOWARD COUNTY DEPARTMENT OF PUBLIC WORKS

APPROVED: FOR PUBLIC WATER AND PUBLIC SEWERAGE STORM DRAINAGE SYSTEMS AND PUBLIC ROADS, HOWARD COUNTY DEPARTMENT OF PUBLIC WORKS

APPROVED: FOR PUBLIC WATER AND PUBLIC SEWERAGE STORM DRAINAGE SYSTEMS AND PUBLIC ROADS, HOWARD COUNTY DEPARTMENT OF PUBLIC WORKS

APPROVED: FOR PUBLIC WATER AND PUBLIC SEWERAGE STORM DRAINAGE SYSTEMS AND PUBLIC ROADS, HOWARD COUNTY DEPARTMENT OF PUBLIC WORKS

APPROVED: FOR PUBLIC WATER AND PUBLIC SEWERAGE STORM DRAINAGE SYSTEMS AND PUBLIC ROADS, HOWARD COUNTY DEPARTMENT OF PUBLIC WORKS

APPROVED: FOR PUBLIC WATER AND PUBLIC SEWERAGE STORM DRAINAGE SYSTEMS AND PUBLIC ROADS, HOWARD COUNTY DEPARTMENT OF PUBLIC WORKS

APPROVED: FOR PUBLIC WATER AND PUBLIC SEWERAGE STORM DRAINAGE SYSTEMS AND PUBLIC ROADS, HOWARD COUNTY DEPARTMENT OF PUBLIC WORKS

APPROVED: FOR PUBLIC WATER AND PUBLIC SEWERAGE STORM DRAINAGE SYSTEMS AND PUBLIC ROADS, HOWARD COUNTY DEPARTMENT OF PUBLIC WORKS

APPROVED: FOR PUBLIC WATER AND PUBLIC SEWERAGE STORM DRAINAGE SYSTEMS AND PUBLIC ROADS, HOWARD COUNTY DEPARTMENT OF PUBLIC WORKS

APPROVED: FOR PUBLIC WATER AND PUBLIC SEWERAGE STORM DRAINAGE SYSTEMS AND PUBLIC ROADS, HOWARD COUNTY DEPARTMENT OF PUBLIC WORKS

APPROVED: FOR PUBLIC WATER AND PUBLIC SEWERAGE STORM DRAINAGE SYSTEMS AND PUBLIC ROADS, HOWARD COUNTY DEPARTMENT OF PUBLIC WORKS

APPROVED: FOR PUBLIC WATER AND PUBLIC SEWERAGE STORM DRAINAGE SYSTEMS AND PUBLIC ROADS, HOWARD COUNTY DEPARTMENT OF PUBLIC WORKS

APPROVED: FOR PUBLIC WATER AND PUBLIC SEWERAGE STORM DRAINAGE SYSTEMS AND PUBLIC ROADS, HOWARD COUNTY DEPARTMENT OF PUBLIC WORKS

APPROVED: FOR PUBLIC WATER AND PUBLIC SEWERAGE STORM DRAINAGE SYSTEMS AND PUBLIC ROADS, HOWARD COUNTY DEPARTMENT OF PUBLIC WORKS

APPROVED: FOR PUBLIC WATER AND PUBLIC SEWERAGE STORM DRAINAGE SYSTEMS AND PUBLIC ROADS, HOWARD COUNTY DEPARTMENT OF PUBLIC WORKS

APPROVED: FOR PUBLIC WATER AND PUBLIC SEWERAGE STORM DRAINAGE SYSTEMS AND PUBLIC ROADS, HOWARD COUNTY DEPARTMENT OF PUBLIC WORKS

APPROVED: FOR PUBLIC WATER AND PUBLIC SEWERAGE STORM DRAINAGE SYSTEMS AND PUBLIC ROADS, HOWARD COUNTY DEPARTMENT OF PUBLIC WORKS

APPROVED: FOR PUBLIC WATER AND PUBLIC SEWERAGE STORM DRAINAGE SYSTEMS AND PUBLIC ROADS, HOWARD COUNTY DEPARTMENT OF PUBLIC WORKS

APPROVED: FOR PUBLIC WATER AND PUBLIC SEWERAGE STORM DRAINAGE SYSTEMS AND PUBLIC ROADS, HOWARD COUNTY DEPARTMENT OF PUBLIC WORKS

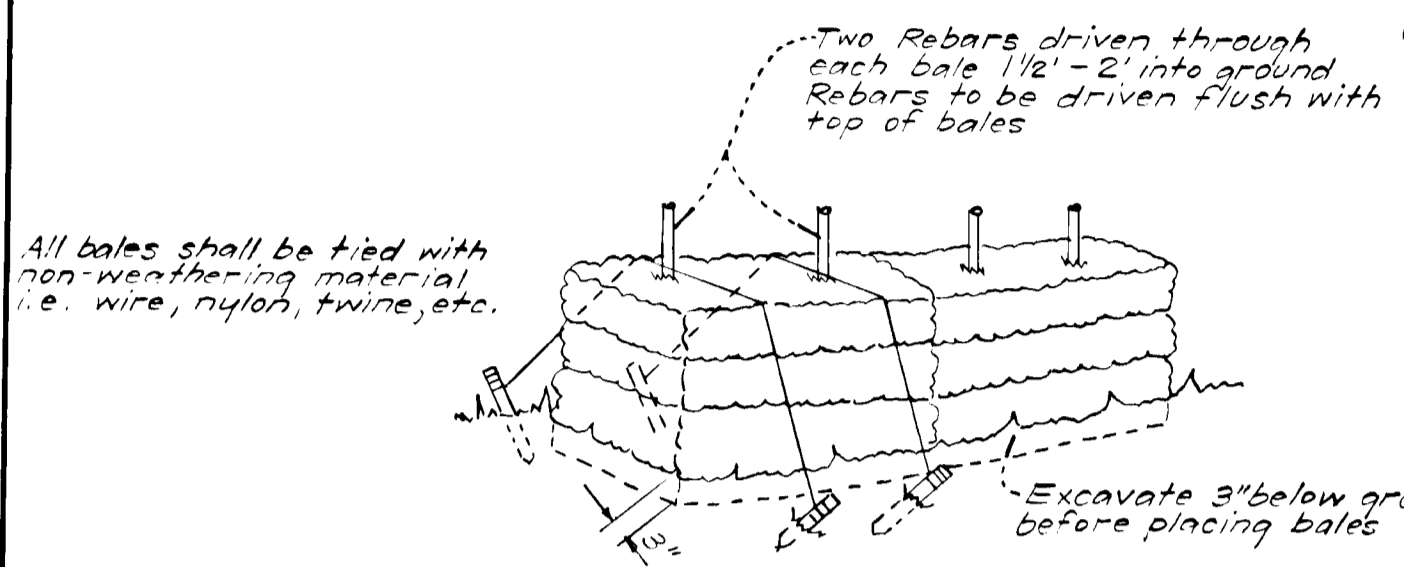
APPROVED: FOR PUBLIC WATER AND PUBLIC SEWERAGE STORM DRAINAGE SYSTEMS AND PUBLIC ROADS, HOWARD COUNTY DEPARTMENT OF PUBLIC WORKS

LEGEND

1. Contour Interval 2 Ft.
2. Existing Contours 480
3. Proposed Contours 480
4. Spot Elevations +80.5
5. Direction Of Drainage
6. Existing Trees To Be Retained
7. Existing Trees To Be Removed
8. All Existing Trees Are Oaks, Unless Otherwise Shown
9. Retaining Wall
10. Yard Requirements:
 - Front - 20' On 50' Wide Streets
 - 30' On 60' Wide Streets
 - Side - 7.5' (Min.)
11. Walk Out Basement

GENERAL NOTES

1. All Sediment and Erosion Control Measures will be installed and stabilized according to this plan prior to any other grading, clearing, or disturbance of any existing surface of the site.
2. Notify the Howard Soil Conservation District at least 24 hours before starting any work.
3. All Sediment Control Practices to conform to the Standards and Specifications for Soil Erosion and Sediment Control in Urbanizing Areas shall be adjusted to meet actual field conditions.
4. Stabilization of disturbed ground to be done as soon after construction as possible.
5. All graded areas shall be treated in accordance with the following specifications:
 - a. Seed - Certified 85% germination applied at the rate of 2 lbs/1000 sq ft mixture - 40% Kentucky Blue, 20% Chewing Fescue, 20% Kentucky 31, and 20% Annual Ryegrass.
 - b. Fertilizer - 5-10-10 applied at the rate of 23 lbs/1000 sq ft and ground agricultural lime or dolomitic lime applied at the rate of 20 lbs/1000 sq ft.
 - c. Mulch - Weed free grain straw applied at the rate of 70 lbs/1000 sq ft. Mulch shall be secured to the ground by any approved method, i.e. asphalt tracks, chemical binder, wood chips, etc.



TYPICAL STRAW BALE DETAIL
NO SCALE

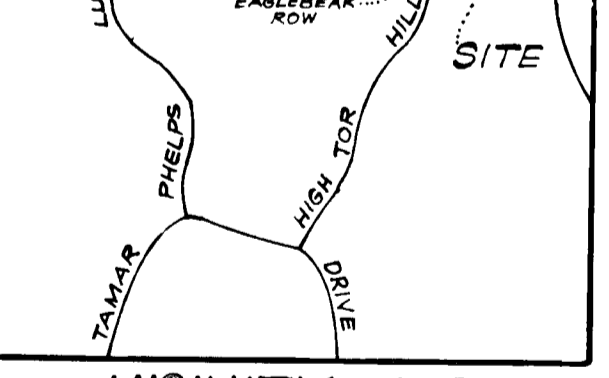
NOTE: In lieu of the use of rebars each straw bale may be fastened to ground with pegs (4 per bale) & nylon twine as shown above.

Reviewed for HOWARD SOIL CONSERVATION DISTRICT and meets the requirements of the US Soil Conservation Service. THIS DEVELOPMENT PLAN IS APPROVED FOR SOIL EROSION AND SEDIMENT CONTROL BY THE HOWARD SOIL CONSERVATION DISTRICT.

APPROVED: *[Signature]* DATE 4/5/73

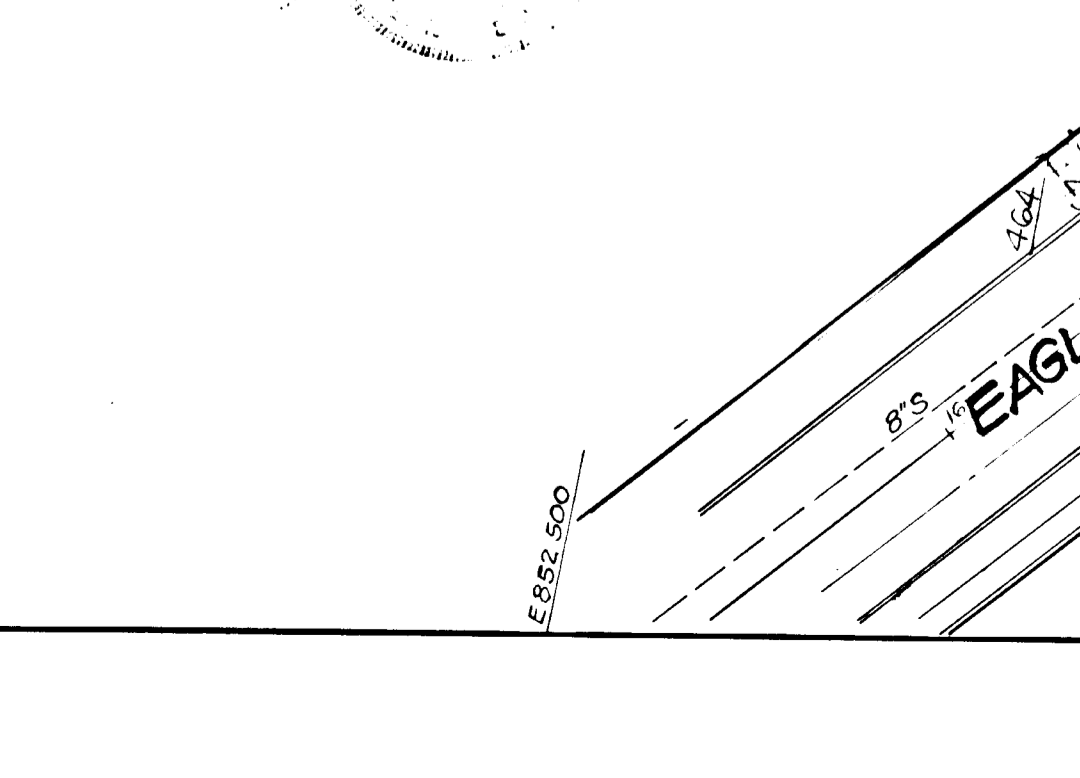
DEVELOPER'S CERTIFICATE
I certify that all development and/or construction will be done in accordance with the plan, fully comply with all applicable laws, ordinances, rules and regulations, and I also authorize persons or organizations by the Howard Soil Conservation District to perform any and all necessary work in connection with the plan made herein authorized by the Howard Soil Conservation District.

Date 5-23-73
[Signature]
Research Homes of Maryland, Inc.



VICINITY MAP
SCALE 1" = 2000'

Date 5-23-73
[Signature]
G. Nelson Clark



CLARK • FINEPROCK & SACKETT ENGINEERS • PLANNERS • SURVEYORS		11161 NEW HAMPSHIRE AVENUE • SILVER SPRING, MARYLAND 20904 • (301) 593-3400	
DESIGNED WRM/C	DEVELOPMENT PLAN LOT 343		SCALE 1" = 30'
DRAWN KWC	COLUMBIA VILLAGE OF LONGREACH SECTION 1 AREA 1		DRAWING 10F1
CHECKED WRM/C	6TH ELECTION DISTRICT HOWARD COUNTY, MARYLAND		JOB NO.
DATE 10/73	FOR: RESEARCH HOMES, INC. 7777 Leesburg Pike Falls Church, Va. 22043		FILE NO. 1074-X