

BY THE DEVELOPER:
 I CERTIFY THAT ALL DEVELOPMENT AND/OR CONSTRUCTION WILL BE DONE ACCORDING TO THIS PLAN OF DEVELOPMENT AND PLAN FOR EROSION AND SEDIMENT CONTROL, AND I ALSO AUTHORIZE PUBLIC SITE INSPECTION BY THE HOWARD SOIL CONSERVATION DISTRICT OR THEIR AUTHORIZED AGENTS AS ARE PERMITTED NECESSARY.

George Trapp 6/27/73
 SIGNATURE OF DEVELOPER DATE

BY THE ENGINEER:
 I CERTIFY THAT THIS PLAN FOR EROSION AND SEDIMENT CONTROL REPRESENTS A PRACTICAL AND WORKABLE PLAN BASED ON MY PERSONAL KNOWLEDGE OF THE SITE CONDITIONS AND THAT IT WAS PREPARED IN ACCORDANCE WITH THE REQUIREMENTS OF THE HOWARD SOIL CONSERVATION DISTRICT.

Paul Holt 6/27/73
 SIGNATURE OF ENGINEER DATE

APPROVED FOR PUBLIC WATER AND PRIVATE SEWERAGE SYSTEMS: HOWARD COUNTY HEALTH DEPARTMENT
W. J. [unclear] 7/17/73
 COUNTY HEALTH OFFICER DATE

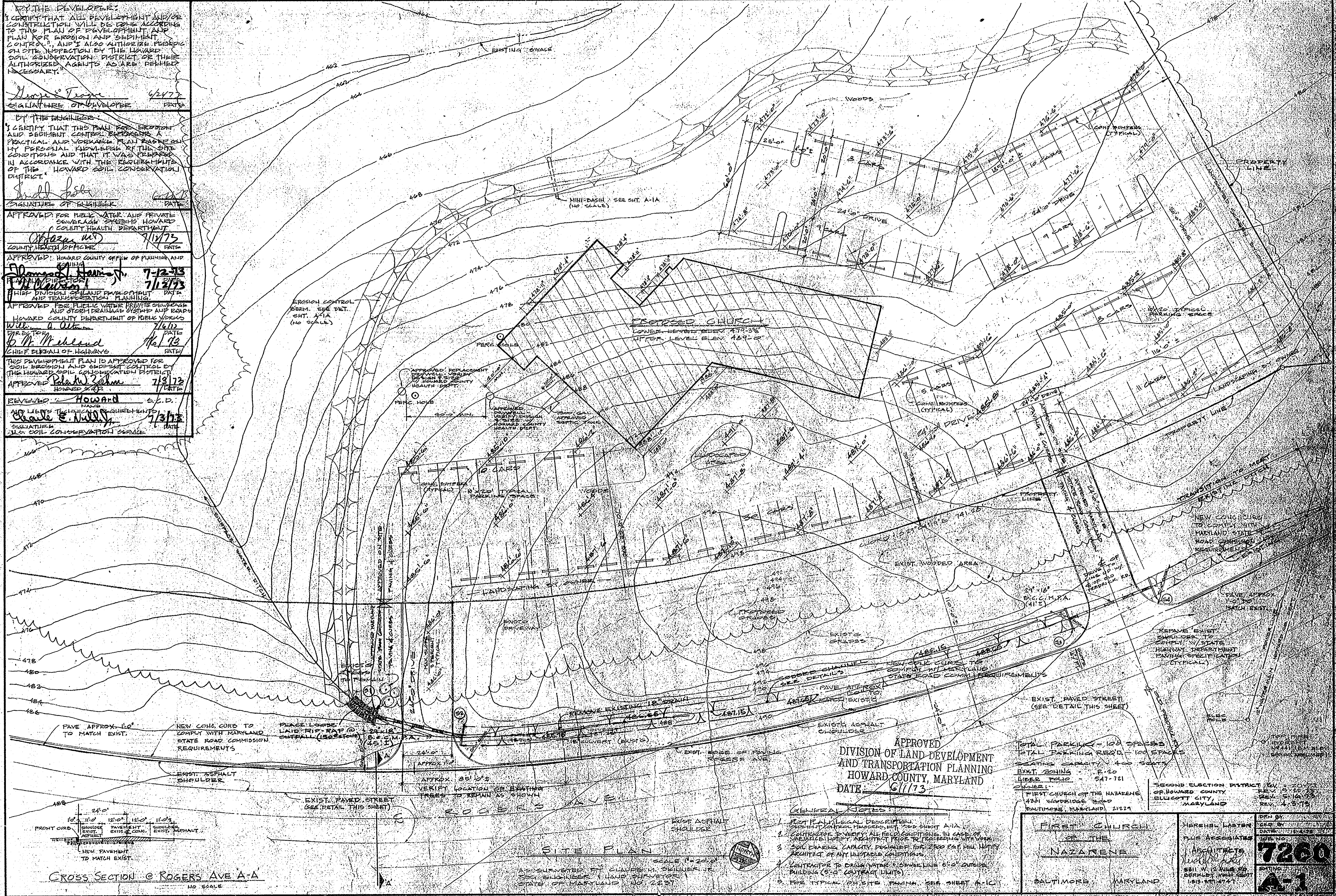
APPROVED: HOWARD COUNTY OFFICE OF PLANNING AND ZONING
James J. [unclear] 7-12-73
 PLANNING OFFICER DATE

APPROVED FOR PUBLIC WATER PRIVATE SEWERAGE AND STORM DRAINAGE SYSTEMS AND ROADS: HOWARD COUNTY DEPARTMENT OF PUBLIC WORKS
W. J. [unclear] 7/6/73
 DIRECTOR DATE

APPROVED FOR HIGHWAYS: HOWARD COUNTY DEPARTMENT OF HIGHWAYS
W. J. [unclear] 7/13/73
 CHIEF BUREAU OF HIGHWAYS DATE

THIS DEVELOPMENT PLAN IS APPROVED FOR SOIL EROSION AND SEDIMENT CONTROL BY THE HOWARD SOIL CONSERVATION DISTRICT
 APPROVED: *Robert [unclear]* 7/3/73
 HOWARD SCS DATE

REVIEWED: *Howard S.C.D.*
 AND LEGAL REQUIREMENTS
Charles E. Nully 7/3/73
 SIGNATURE DATE
 HOWARD SOIL CONSERVATION SERVICE



APPROVED
 DIVISION OF LAND DEVELOPMENT
 AND TRANSPORTATION PLANNING
 HOWARD COUNTY, MARYLAND
 DATE: 6/7/73

TOTAL PARKING - 100 SPACES
 TOTAL PARKING REVD. - 100 SPACES
 SEATING CAPACITY - 400 SEATS
 EXIST. ZONING - F-70
 EXIST. POLICE - 547-721
 OWNER: FIRST CHURCH OF THE NAZARENE
 4301 WOODBRIDGE ROAD
 BALTIMORE, MARYLAND 21224

SECOND ELECTION DISTRICT 20A, 20B, 20C
 OF HOWARD COUNTY
 BLOCCOTT CITY,
 MARYLAND

REV. 5-22-73
 REV. 5-16-73
 REV. 4-3-73

- GENERAL NOTES
1. SEE PLAN LEGAL DESCRIPTION FOR BOUNDARY LINES AND CORNERS. SEE SHEET A-1A.
 2. CONTRACTOR TO VERIFY ALL FIELD CONDITIONS. IN CASE OF VARIANCE NOTIFY ARCHITECT PRIOR TO PROCEEDING WITH WORK.
 3. SOIL CLEARING CAPACITY DESIGNER FOR 2000 P.S.F. PER HENRY ARCHITECT OF ANY UNUSUAL CONDITIONS.
 4. CONTRACTOR TO DRILL WATER CONVEYING 6" O.D. OUTSIDE BUILDING (5'-6" CONTRACT LIMITS).
 5. SEE TYPICAL ON SITE FINISH, SEE SHEET A-1C.

FIRST CHURCH
 OF THE
 NAZARENE

BALTIMORE, MARYLAND

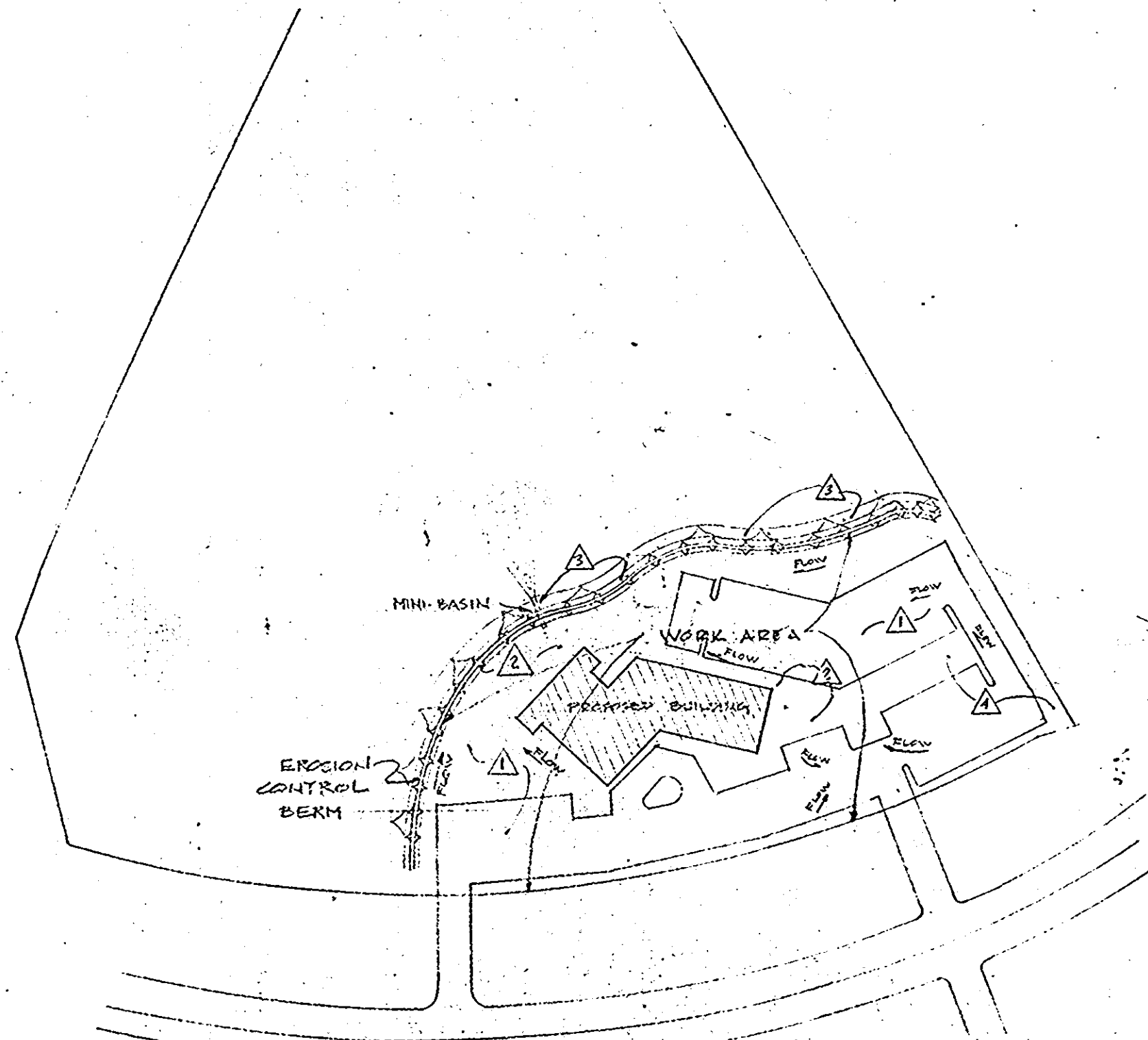
HARSHAL LASTEN
 PLUS ASSOCIATES
 ARCHITECTS
 5811 W. 12 MILE RD.
 BERRKLEY, MICH. 48007
 1815-541-4741

DATE: 6/7/73
 SHEET NO. 7200
 DRAWING NO. A-1

SITE PLAN
 SCALE 1"=20'-0"
 AS SURVEYED BY CLAUDE M. SKINNER JR.
 REG. ENGINEER & LAND SURVEYOR
 STATE OF MARYLAND NO. 2237

SEDIMENT CONTROL GENERAL NOTES

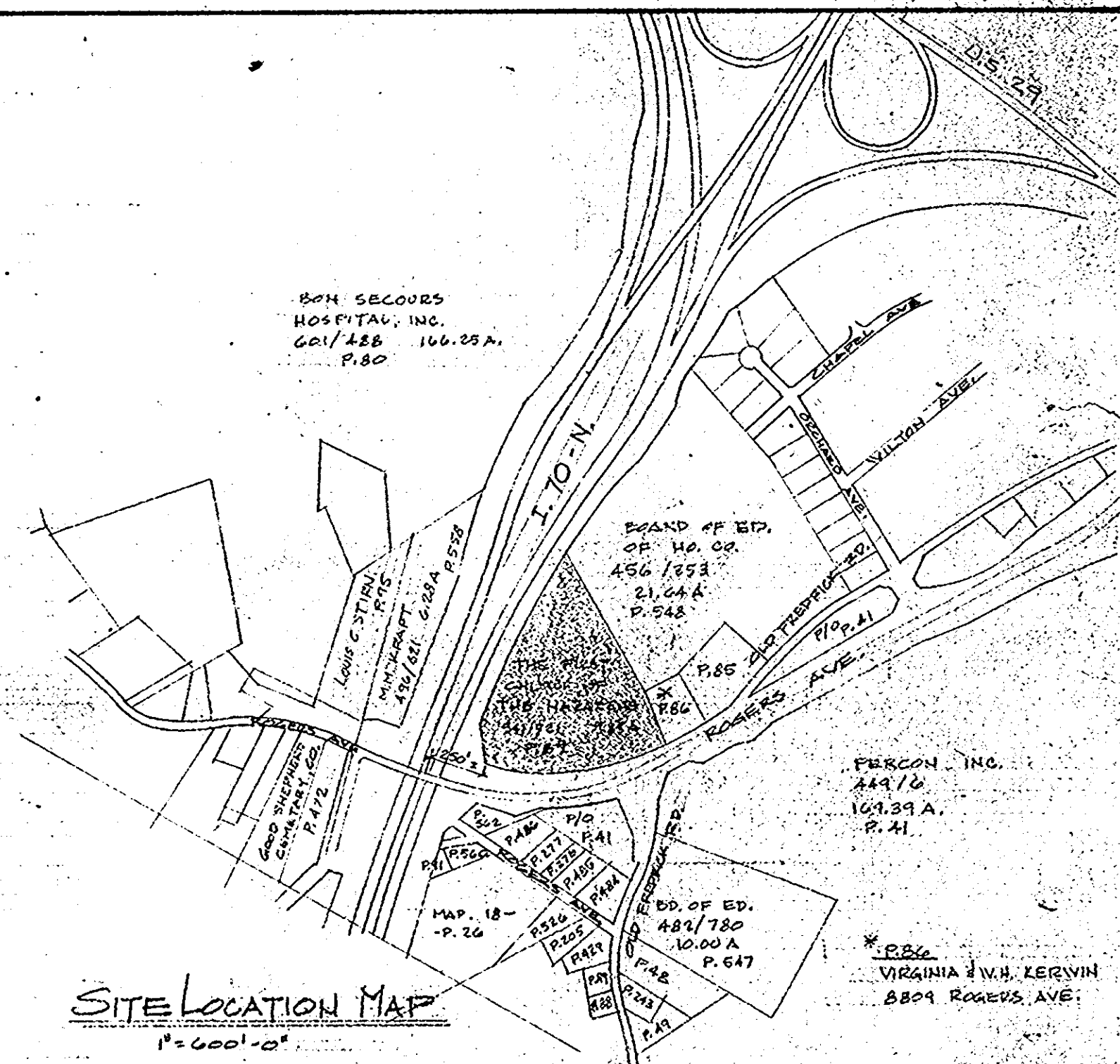
1. NOTIFY THE HOWARD SOIL CONSERVATION DISTRICT AND THE HOWARD COUNTY DEPARTMENT OF INSPECTION AND PERMITS AT LEAST 24 HRS. PRIOR TO BEGINNING GRADING.
2. ALL SEDIMENT CONTROL MEASURES TO BE INSTALLED AND STABILIZED IN ACCORDANCE WITH NOTE NO. 3.
3. STABILIZATION OF TEMPORARY STRUCTURAL MEASURES WILL CONSIST OF:
 - a. 1 TON LIME / ACRE.
 - b. 1000# - 5-10-10 / ACRE. FERTILIZER.
 - c. WORK INTO SEED BED BY DISKING.
 - d. SEED TO:
 - RYE GRASS @ 40# / ACRE.
 - e. MULCH WITH STRAW AT 1 1/2 TON / ACRE.
4. NO SEDIMENT CONTROL MEASURES ARE TO BE REMOVED WITHOUT THE PERMISSION OF THE HOWARD SOIL CONSERVATION DISTRICT.
5. COMPLETE GRADING AS SHOWN ON PLAN.
6. STOCKPILED EXCESS MATERIAL WILL BE PLACED IN LOCATIONS AS SHOWN AND TEMPORARILY STABILIZED WITH MULCH AT 1 1/2 TON / ACRE.
7. BUILDING WILL BE CONSTRUCTED AND UTILITIES INSTALLED AS PER PLAN.
8. TOPSOIL STORED IN TEMPORARY SEDIMENT CONTROL MEASURES WILL BE UTILIZED TO APPLY A 2" COVER OVER ALL DISTURBED SURFACES.
9. FINAL STABILIZATION WILL BE AS FOLLOWS:
 - a. 1 TON LIME / ACRE OR 40# / 1000#
 - b. 1000# - 5-10-10 / ACRE OR 23# / 1000# FERTILIZER.
 - c. WORK INTO SEED BED BY DISKING.
 - d. PLANT A 50-50 MIXTURE OF KENTUCKY BLUE GRASS AND CREEPING RED FESCUE AT 3# / 1000# - OR LAY SOD WITH THE SAME MIXTURE AND OMIT ITEM C WHEN SOD IS LAID.
 - e. MULCH WITH WEED FREE SMALL GRAIN STRAW AT 1 1/2 - 2 TON / ACRE.



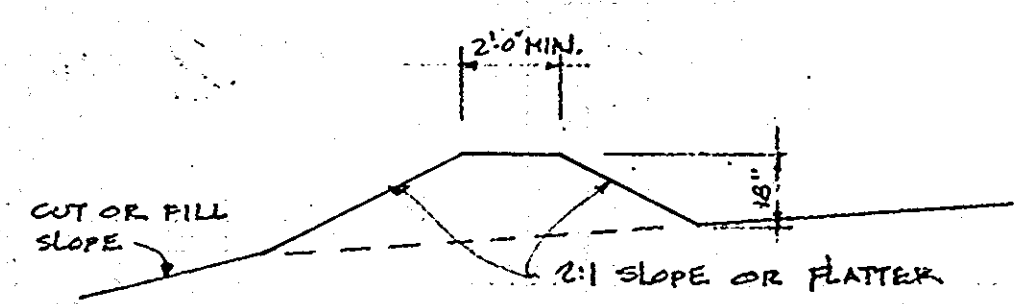
ORDER OF CONSTRUCTION FOR SEDIMENT & EROSION CONTROL FACILITIES

CONSTRUCTION SEQUENCE GENERAL NOTES

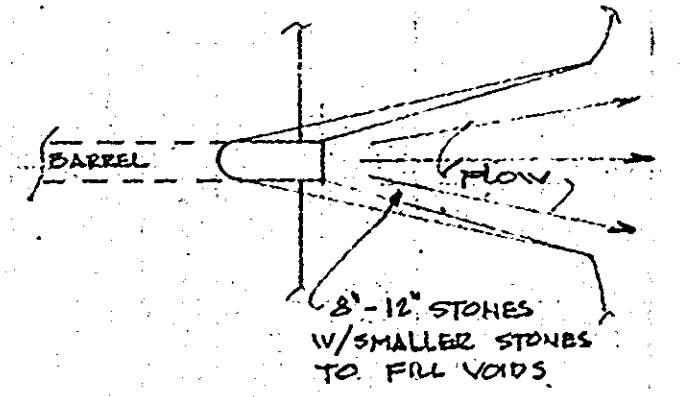
1. CLEAR AND GRUB SITE.
 2. START GRADING IN WORK AREA.
 3. CONSTRUCT AND MAINTAIN TEMPORARY EROSION CONTROL BERMS WITH LEVEL SPREADERS. CONSTRUCT MINI-BASINS.
 4. TOPSOIL AND SEED/SOD AS VARIOUS AREAS ARE FINISHED GRADED.
 5. COMPLETE WORK, CLEAN AND MAINTAIN FACILITIES FOR FUTURE BUILDING WORK UNTIL CONTROL IS ACCEPTED OR BUILDING CONTRACTOR ASSUMES RESPONSIBILITY.
- ALL SEDIMENT AND CONTROL MEASURES SHALL BE INSTALLED PRIOR TO ANY OTHER GRADING OF THE SITE, AND AS SPECIFIED ABOVE. PRIOR TO STARTING GRADING, THE CONTRACTOR SHALL GIVE 24 HOURS NOTICE TO THE HOWARD COUNTY SOIL CONSERVATION DISTRICT & THE HOWARD COUNTY BUREAU OF LICENSES, INSPECTIONS AND PERMITS.
- PROTECT ALL TOPSOIL STOCKPILES WITH 2' HIGH TEMPORARY BERM AROUND BASE OF STOCKPILE WITH MINIMUM 25' LONG STONE OVERFLOW BERM AT LOW POINT. CLEAN AREA BACK OF BERM AS REQUIRED TO MAINTAIN AN AREA FOR STORAGE OF SEDIMENT.
- ALL STOCKPILES THAT ARE TO BE UNDISTURBED FOR 3 WEEKS OR LONGER, SHALL, IMMEDIATELY AFTER PILING, BE FERTILIZED, LIMED AND SEEDBED WITH ANNUAL RYE GRASS AT RATE OF 1# / 1000 S.F.



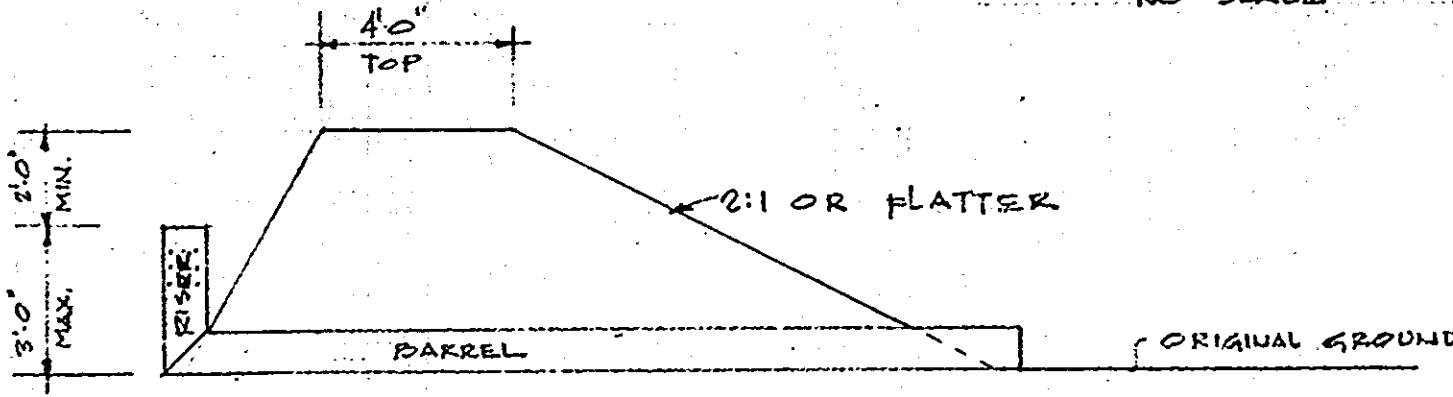
SITE LOCATION MAP



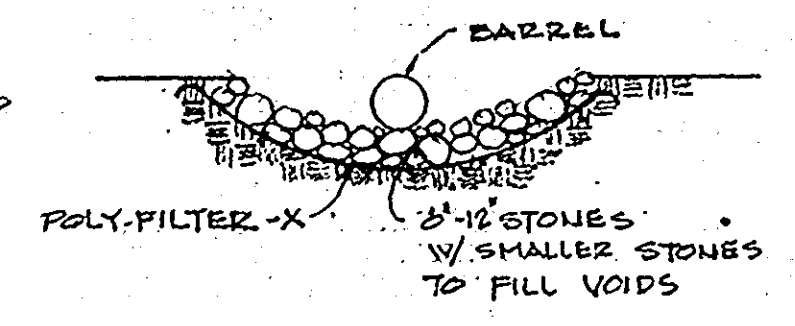
DIVERSION DIKE DETAIL



MINI-BASIN FLOW PLAN



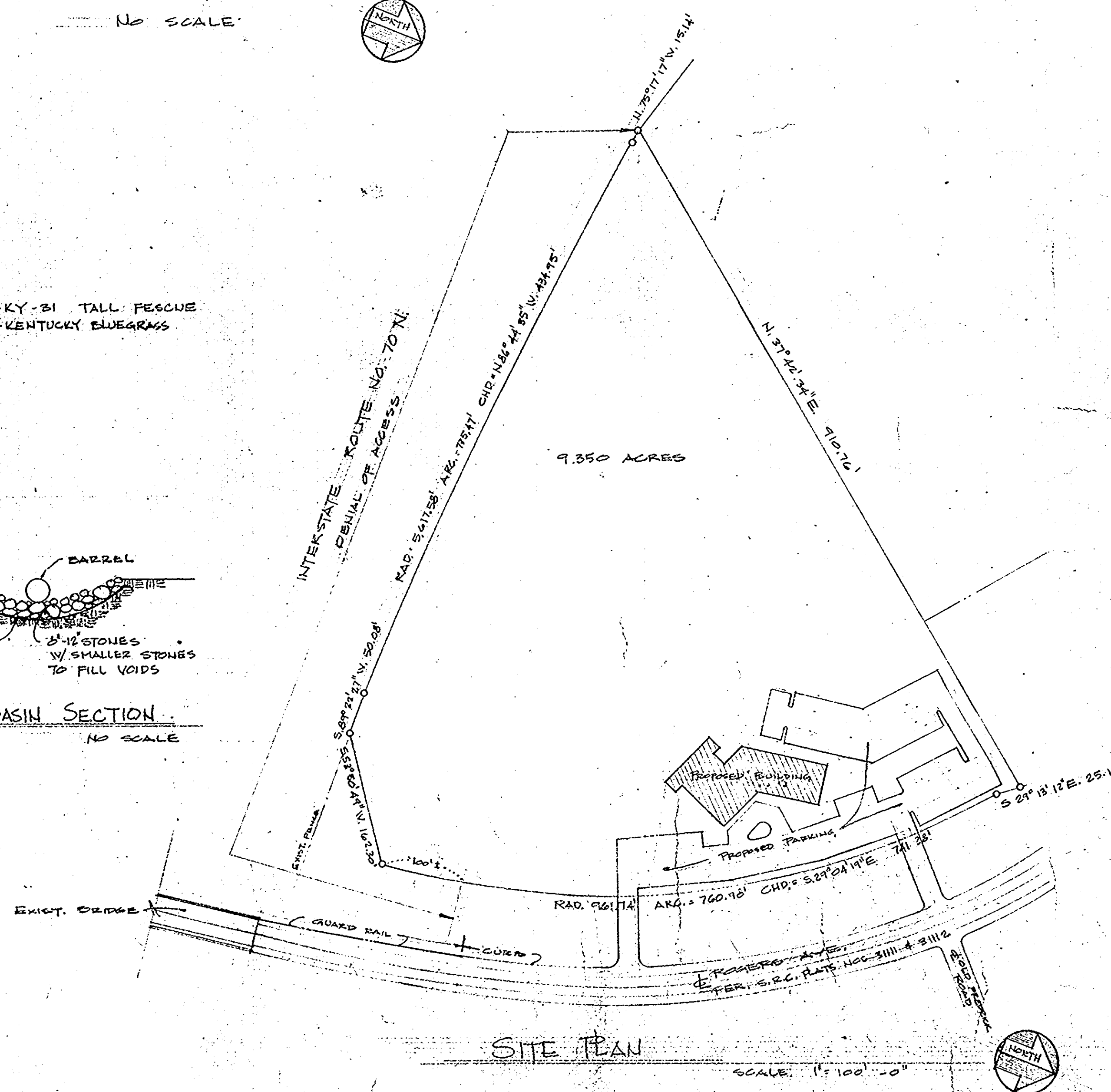
MINI BASIN DETAILS



MINI-BASIN SECTION

MINI BASIN STANDARD NOTES:

1. IF DRAINAGE AREA IS LESS THAN 10 ACRES
1. TOP WIDTH 4'-0" MIN.
2. HEIGHT OF RISER 3'-0" MIN.
3. SIDE SLOPES 2:1 OR FLATTER
4. TO BE OF COMPACTED EARTH
5. TO BE STABILIZED BY SEEDING (SEE NOTE #3 - GENERAL NOTES ABOVE)
6. PIPE SIZES BY DRAINAGE AREA
 - a. UP TO 10 ACRES - 15" BARREL & RISER
 - b. UP TO 7 ACRES - 12" BARREL & RISER
 - c. UP TO 5 ACRES - 10" BARREL & RISER
 - d. UP TO 3 ACRES - 8" BARREL & RISER
7. PERFORATE TOP 1/2 OF RISER W/ 1/2" HOLES SPACED 4" APART
8. SPECIFY CLEANOUT - WHEN SEDIMENT REACHES WITHIN ONE FOOT OF TOP OF RISER.



SITE PLAN

BY THE DEVELOPER:
I CERTIFY THAT ALL DEVELOPMENT AND/OR CONSTRUCTION WILL BE DONE ACCORDING TO THIS PLAN OF DEVELOPMENT AND PLAN FOR EROSION AND SEDIMENT CONTROL, AND I ALSO AUTHORIZE PERIODIC ON-SITE INSPECTION BY THE HOWARD SOIL CONSERVATION DISTRICT OR THEIR AUTHORIZED AGENTS, AS ARE DEEMED NECESSARY.

George E. Trapp 6/26/73
SIGNATURE OF DEVELOPER DATE

BY THE ENGINEER:
I CERTIFY THAT THIS PLAN FOR EROSION AND SEDIMENT CONTROL REPRESENTS A PRACTICAL AND WORKABLE PLAN BASED ON MY PERSONAL KNOWLEDGE OF THE SITE, CONDITIONS AND THAT IT WAS PREPARED IN ACCORDANCE WITH THE REQUIREMENTS OF THE HOWARD SOIL CONSERVATION DISTRICT.

Herchel Laster 6-26-73
SIGNATURE OF ENGINEER DATE

APPROVED FOR PUBLIC WATER AND PRIVATE SEWERAGE SYSTEMS, HOWARD COUNTY HEALTH DEPARTMENT
Walter W.D. 7/2/73
COUNTY HEALTH OFFICER DATE

APPROVED HOWARD COUNTY OFFICE OF PLANNING AND PLANNING DIRECTOR
Thomas St. James 7-12-73
DATE

APPROVED FOR PUBLIC WATER, PRIVATE SEWERAGE AND STORM DRAINAGE SYSTEMS AND ROADS, HOWARD COUNTY DEPARTMENT OF PUBLIC WORKS
William A. Altman 7/6/73
DIRECTOR DATE

APPROVED
D. M. McKeon 7/6/73
CHIEF BUREAU OF HIGHWAYS DATE

APPROVED
DIVISION OF LAND DEVELOPMENT AND TRANSPORTATION PLANNING
HOWARD COUNTY, MARYLAND
DATE 6/11/73

THIS DEVELOPMENT PLAN IS APPROVED FOR SOIL EROSION AND SEDIMENT CONTROL BY THE HOWARD SOIL CONSERVATION DISTRICT.
APPROVED *Robert J. John* 7/8/73
HOWARD S.D.D. DATE

REVIEWED FOR HOWARD COUNTY REQUIREMENTS
Charles C. Kelly 7/8/73
SIGNATURE U.S. SOIL CONSERVATION SERVICE DATE

EXIST. ZONING R-20
LINES PL-10 347-721
OWNER
FIRST CHURCH OF THE NAZARENE
4301 WOODRIDGE ROAD
BALTIMORE, MARYLAND 21229

SECOND ELECTION DISTRICT OF HOWARD COUNTY ELLICOTT CITY, MARYLAND
REV. 6-20-73
REV. 5-16-73
REV. 4-3-73

FIRST CHURCH OF THE NAZARENE
BALTIMORE, MARYLAND

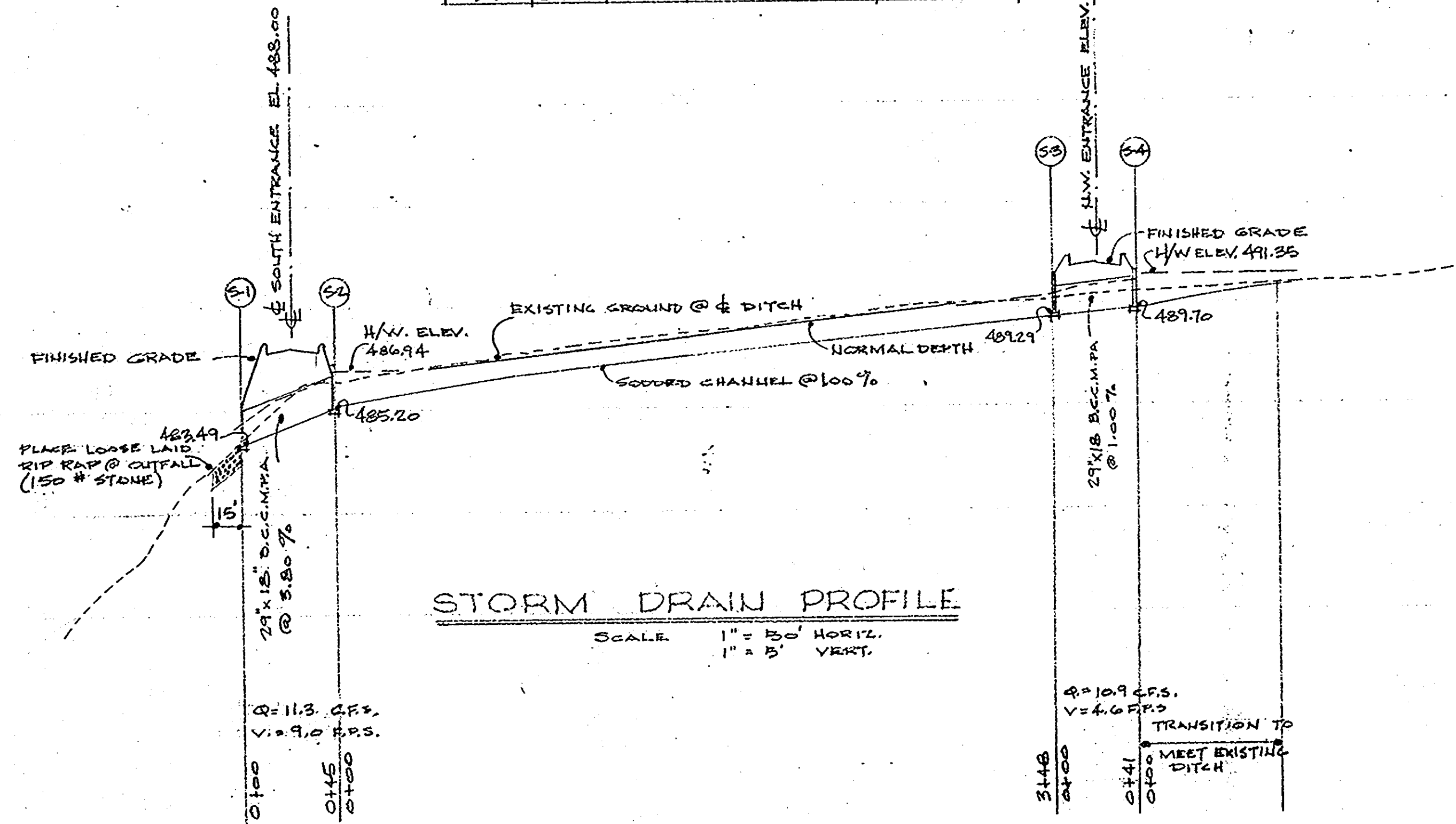
HERSHEL LASTER PLUS ASSOCIATES ARCHITECTS
Herchel Laster
3811 W 12 MILE RD
PERLEY, MICH. 48076
1-513-397-4747

DATE
JOB NO.
7260
SHEET NO.
A-1A

STRUCTURE SCHEDULE					
STRUCTURE	TYPE	INV. IN.	INV. OUT.	TOP ELEV.	STD. DETAIL
S-1	C ARCH	-	485.49	485.49	FIG 2 DWG D-55
S-2	C ARCH	485.22	-	487.22	FIG 2 DWG D-55
S-3	C ARCH	-	489.28	491.28	FIG 2 DWG D-55
S-4	C ARCH	489.70	-	491.70	FIG 2 DWG D-55

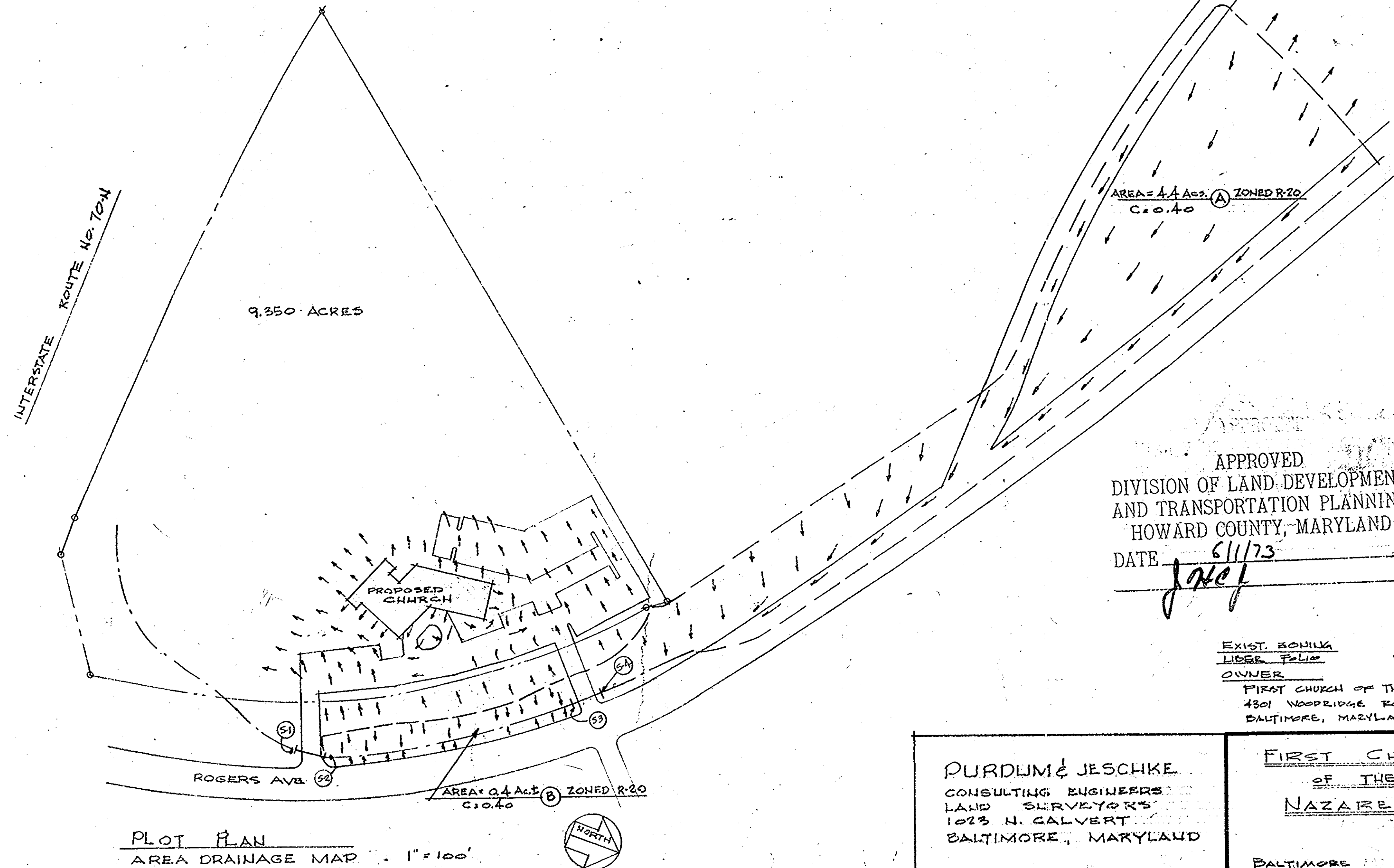
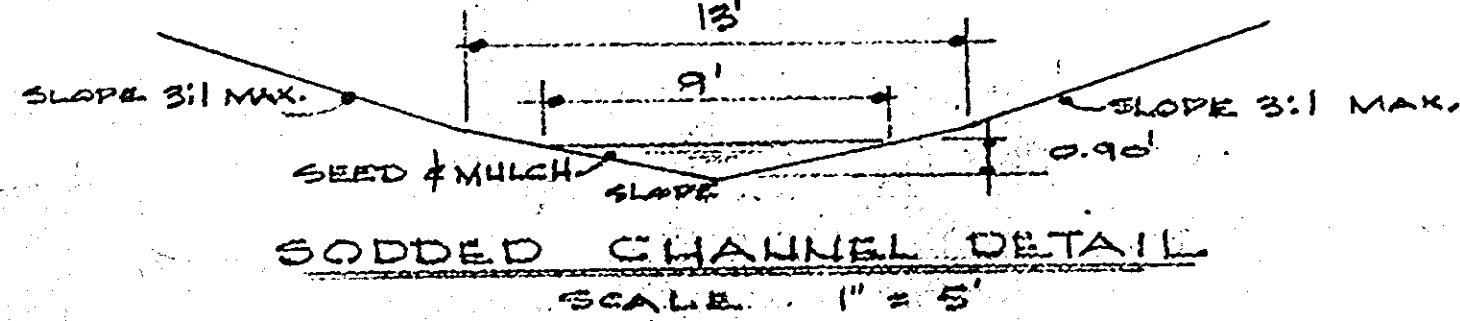
500
495
490
485
480
475

500
495
490
485
480
475



CHANNEL DESIGN DATA

A = 3.95 S = 1.0%
P = 9.18 S_{1/2} = 1.00
R = 0.42 R = 0.03
P_{1/2} = 0.512
V = 1.86 ft/s R_{1/2} = 0.512 V = 1.95 ft/s
Q = VA = 2.82 x 3.95 = 11.2 c.f.s.



PLOT PLAN
AREA DRAINAGE MAP 1" = 100'

BY THE DEVELOPER:
I CERTIFY THAT ALL DEVELOPMENT AND/OR CONSTRUCTION WILL BE DONE ACCORDING TO THIS PLAN OF DEVELOPMENT AND PLAN FOR EROSION AND SEDIMENT CONTROL, AND I ALSO AUTHORIZE PERIODIC ON SITE INSPECTION BY THE HOWARD COUNTY SOIL CONSERVATION DISTRICT OR THEIR AUTHORIZED AGENTS AS ARE DEEMED NECESSARY.

George E. Trone
SIGNATURE OF DEVELOPER
6/26/73
DATE

BY THE ENGINEER:
I CERTIFY THAT THIS PLAN FOR EROSION AND SEDIMENT CONTROL REPRESENTS A PRACTICAL AND WORKABLE PLAN BASED ON MY PERSONAL KNOWLEDGE OF THE SITE CONDITIONS AND THAT IT WAS PREPARED IN ACCORDANCE WITH THE REQUIREMENTS OF THE HOWARD COUNTY SOIL CONSERVATION DISTRICT.

Frank J. ...
SIGNATURE OF ENGINEER
6-26-73
DATE

APPROVED FOR PUBLIC WATER AND PRIVATE SEWERAGE SYSTEMS; HOWARD COUNTY HEALTH DEPARTMENT
John ...
COUNTY HEALTH OFFICER
7/12/73
DATE

APPROVED HOWARD COUNTY OFFICE OF PLANNING AND TRANSPORTATION PLANNING
Sharon J. ...
PLANNING DIRECTOR
7-12-73
DATE

APPROVED FOR PUBLIC WATER PRIVATE SEWERAGE AND STORM DRAINAGE SYSTEMS AND TRAILS
HOWARD COUNTY DEPARTMENT OF PUBLIC WORKS
William ...
DIRECTOR
7/16/73
DATE

THIS DEVELOPMENT PLAN IS APPROVED FOR SOIL EROSION AND SEDIMENT CONTROL BY THE HOWARD COUNTY SOIL CONSERVATION DISTRICT
Robert W. ...
HOWARD COUNTY S.C.D.
7/13/73
DATE

REVIEWED FOR HOWARD COUNTY SOIL CONSERVATION SERVICE
Howard ...
SIGNATURE
7/13/73
DATE

APPROVED
DIVISION OF LAND DEVELOPMENT
AND TRANSPORTATION PLANNING
HOWARD COUNTY, MARYLAND
DATE 6/11/73
John ...

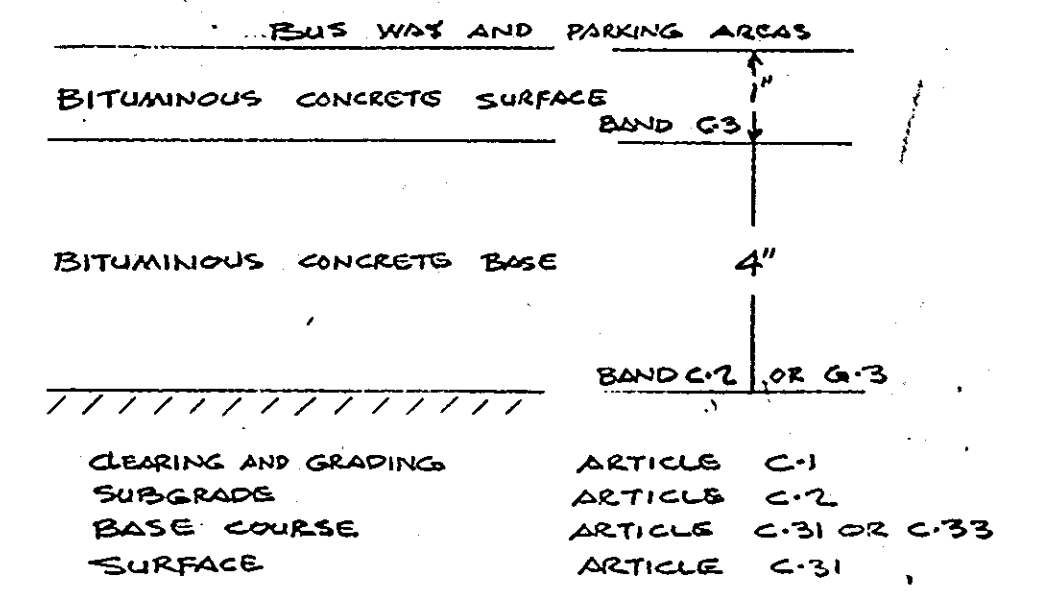
EXIST. ZONING R-20
HERE 547-721
OWNER FIRST CHURCH OF THE NAZARENE
4301 WOODRIDGE ROAD
BALTIMORE, MARYLAND 21229

SECOND ELECTION DISTRICT
OF HOWARD COUNTY
BALTIMORE CITY,
MARYLAND
REV. 6-20-73
REV. 5-16-73
REV. 4-3-73

PURDUM & JESCHKE CONSULTING ENGINEERS LAND SURVEYORS 1023 N. CALVERT BALTIMORE, MARYLAND	FIRST CHURCH OF THE NAZARENE BALTIMORE MARYLAND	HERSHEL LASTER PLUS ASSOCIATES ARCHITECTS <i>Hershel Laster</i> 3311 W. 12 MILE RD. BERKLEY, MICH. 48072 1-313-399-4747	DRN. BY CKD. BY DATE JOB NO. 7260 SHEET NO. A-1B
			S.D.P. 73-89

GENERAL PAVING NOTES

1. ALL MATERIAL AND CONSTRUCTION SHALL BE IN ACCORDANCE WITH HOWARD COUNTY ROAD CONSTRUCTION CODE.
2. BASE WILL BE PRIMED IN ACCORDANCE WITH SECTION C-30-3 AS PROVIDED IN THE HOWARD COUNTY ROAD CONSTRUCTION CODE AND STANDARD SPECIFICATIONS.
3. TACK COAT IS REQUIRED IN ACCORDANCE WITH SECTION C-31-4 OF THE HOWARD COUNTY ROAD CONSTRUCTION CODE AND STANDARD SPECIFICATIONS.



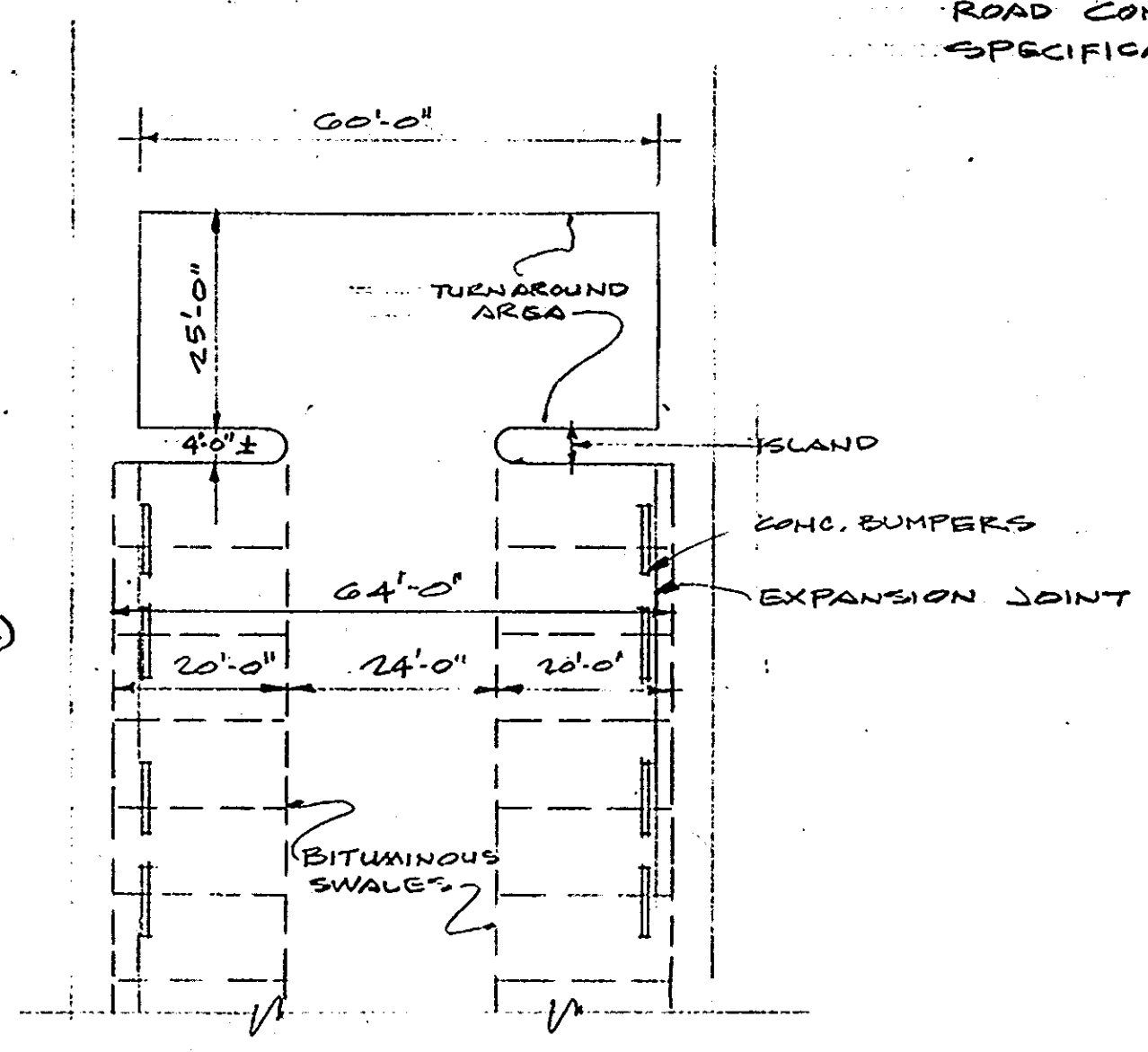
ON SITE PAVING
NO SCALE

PAVING REQUIREMENTS (MARYLAND STATE ROAD COMMISSION SPECIFICATIONS)

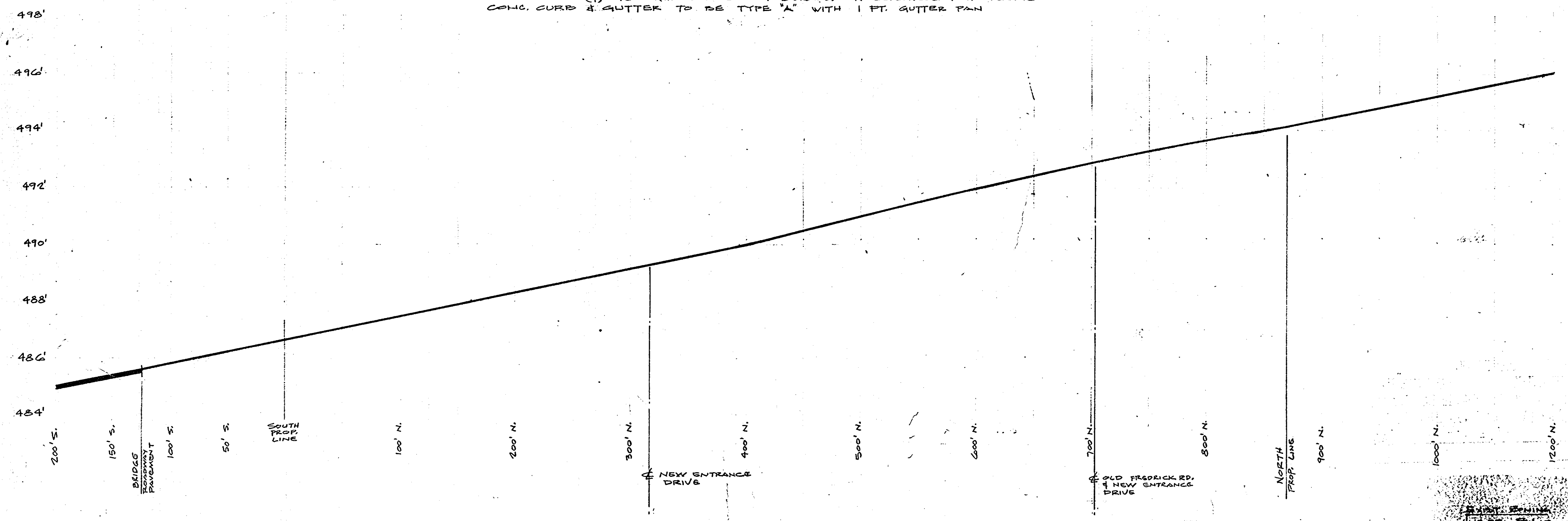
PAVING FROM THE EDGE OF EXISTING PAVEMENT BACK TO THE RIGHT OF WAY LINE SHALL BE OF THE SAME TYPE (RIGID OR FLEXIBLE) AS NOW EXISTS. TRANSITION FROM RIGID TO FLEXIBLE OR VICE-VERSA MUST BE MADE AT THE RIGHT OF WAY LINE OR INSIDE THE PROPERTY, BUT NOT WITHIN THE STATE HIGHWAY ADMINISTRATION RIGHT OF WAY.

SPECIFICATIONS FOR EACH TYPE SHALL BE AS SHOWN BELOW OR HIGHER:

- (a) RIGID: 8" PLAIN CEMENT CONCRETE OR 9" REINFORCED PORTLAND CEMENT IN ENTRANCE PROPER; 9" REINFORCED PORTLAND CEMENT CONCRETE IN THE WIDENING AREA.
 - (b) FLEXIBLE: 9" COMPACTED BITUMINOUS CONCRETE (6" BASE - 3" SURFACE).
 - (c) FLEXIBLE: 3" (NOMINAL) BITUMINOUS CONCRETE SURFACE PLUS 5" (NOMINAL) BITUMINOUS CONCRETE BASE OR SAND ASPHALT BASE ON:
 - (1) 4" CR-6 OR
 - (2) 4" DENSE GRADED AGGREGATE BASE OR
 - (3) 6" COMPACTED GRAVEL OR
 - (4) 12" COMPACTED SELECT BORROW OR EQUIVALENT MATERIAL
- CONC. CURB & GUTTER TO BE TYPE "A" WITH 1 FT. GUTTER PAN



T TURNAROUND FOR OFF-STREET PARKING
NO SCALE



PROFILE @ E OF ROGERS AVE.
SCALE 1" = 50' HORIZ. 1" = 2' VERT.

APPROVED
DIVISION OF LAND DEVELOPMENT
AND TRANSPORTATION PLANNING
HOWARD COUNTY, MARYLAND
DATE 6/11/73

BY THE DEVELOPER:
I CERTIFY THAT ALL DEVELOPMENT AND/OR CONSTRUCTION WILL BE DONE ACCORDING TO THIS PLAN OF DEVELOPMENT AND NO PLAN FOR EROSION AND SEDIMENT CONTROL, AND I ALSO AUTHORIZE PERIODIC ON SITE INSPECTION BY THE HOWARD SOIL CONSERVATION DISTRICT AND THEIR AUTHORIZED AGENTS AS ARE DEEMED NECESSARY.

George E. Tamm 6/26/73
SIGNATURE OF DEVELOPER DATE

BY THE ENGINEER:
I CERTIFY THAT THIS PLAN FOR EROSION AND SEDIMENT CONTROL REPRESENTS A PRACTICAL AND WORKABLE PLAN BASED ON MY PERSONAL KNOWLEDGE OF THE SITE CONDITIONS AND THAT IT WAS PREPARED IN ACCORDANCE WITH THE REQUIREMENTS OF THE HOWARD SOIL CONSERVATION DISTRICT.

Terrell L. Bell 6/26/73
SIGNATURE OF ENGINEER DATE

APPROVED: MRS. FURIO WATER, PRIVATE SANITARY ENGINEER, HOWARD COUNTY HEALTH DEPARTMENT
Furio Water 7/12/73
COUNTY HEALTH OFFICER DATE

APPROVED: HOWARD COUNTY OFFICE OF PLANNING AND ZONING DIRECTOR
Thomas A. Hart 7-12-73
DATE

APPROVED: FOR PUBLIC WATER, SEWERAGE AND STORM DRAINAGE SYSTEMS AND ROAD, HOWARD COUNTY DEPARTMENT OF PUBLIC WORKS
William A. Allen 7/6/73
DATE

APPROVED: CHIEF BUREAU OF HIGHWAYS
D. M. Newland 7/6/73
DATE

THIS DEVELOPMENT PLAN IS APPROVED FOR SOIL EROSION AND SEDIMENT CONTROL BY THE HOWARD SOIL CONSERVATION DISTRICT.
APPROVED: *Richard Zelman* 7/3/73
HOWARD COUNTY DATE

REVIEWER FOR HOWARD COUNTY
Charles E. Kelly 7/3/73
DATE

FIRST CHURCH OF THE NAZARENE
1301 WOODBRIDGE ROAD
BALTIMORE, MARYLAND 21224

SECOND ELECTION DISTRICT OF HOWARD COUNTY
ELLISPORT CITY, MARYLAND

REV. 6-20-73

HERSHEL LASTER
PLG ASSOCIATES
ARCHITECTS
3811 NEW MILE RD
PERKINS, MD 20724
DATE 5/16/73

7260
CIC