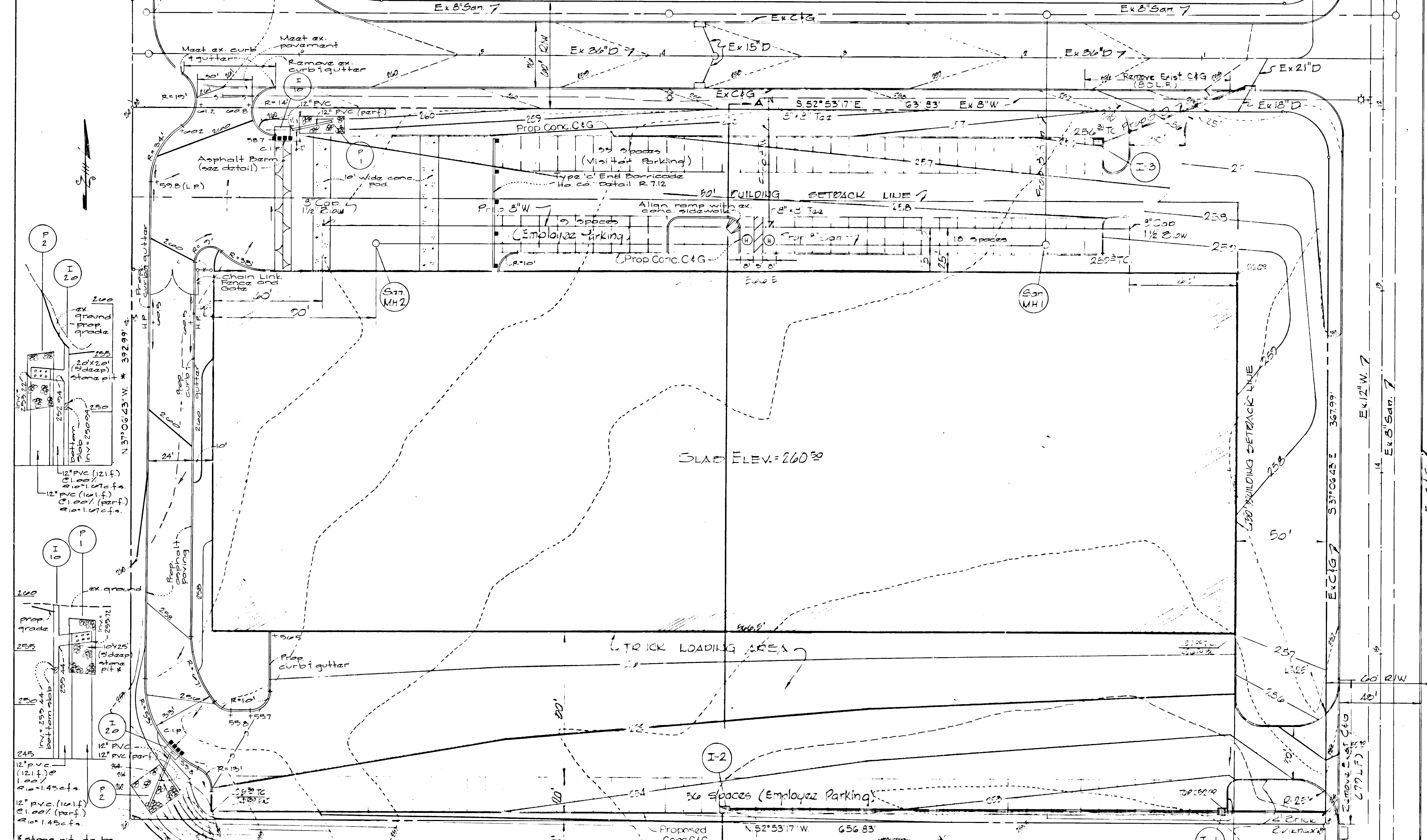
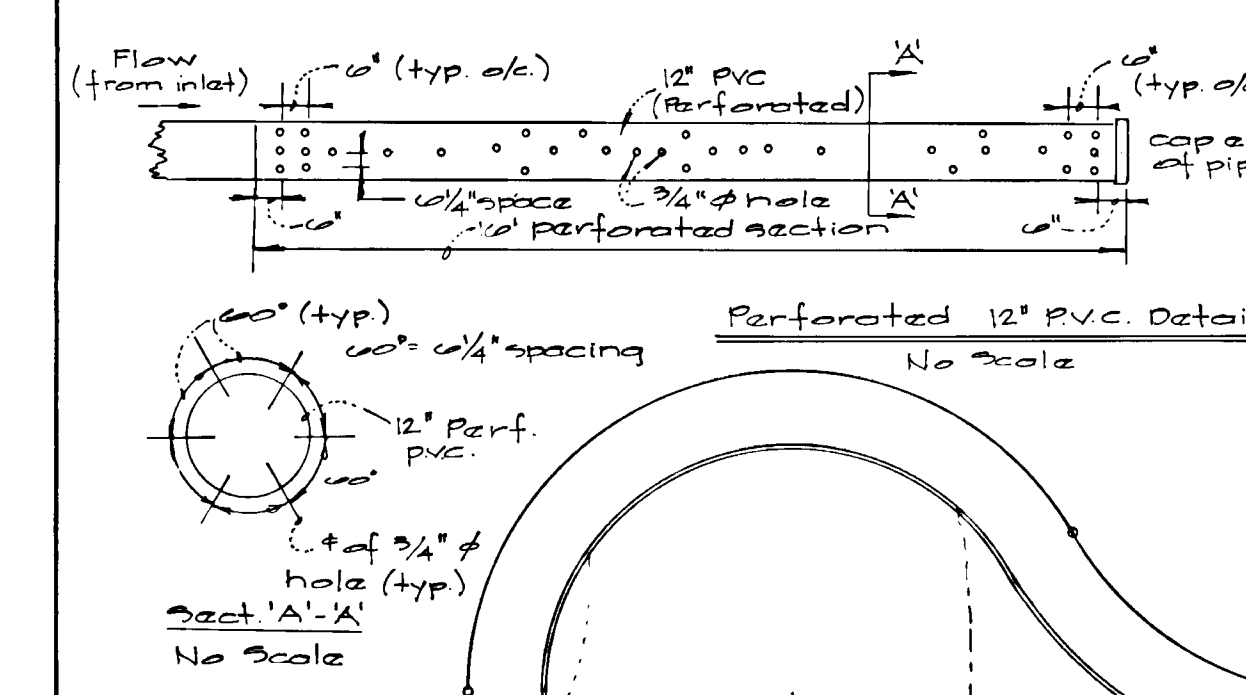
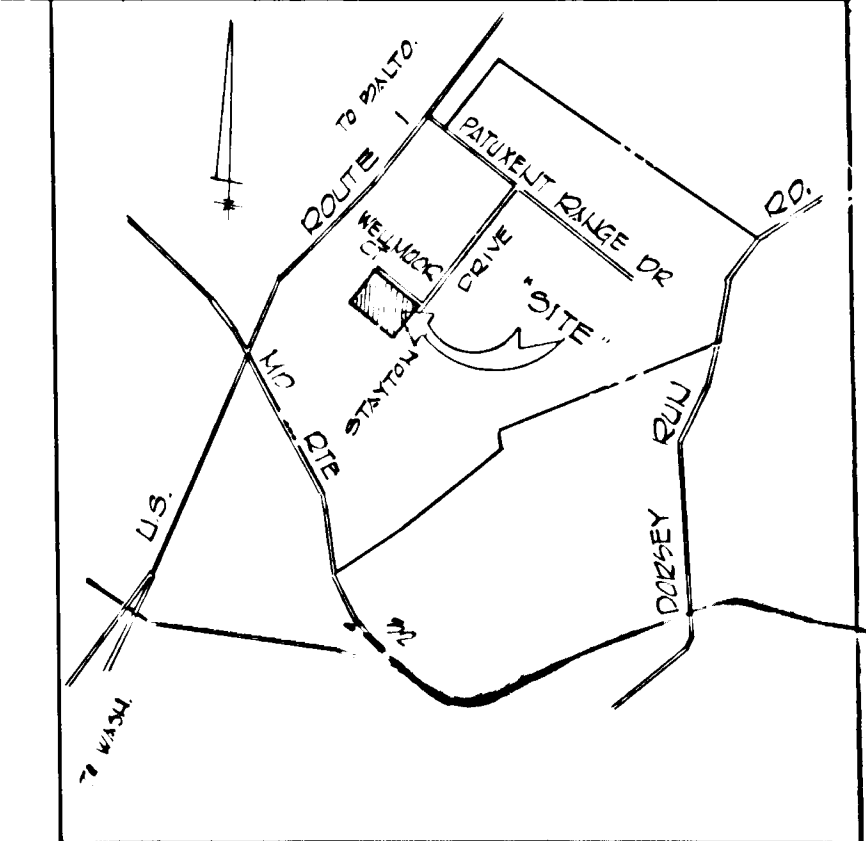
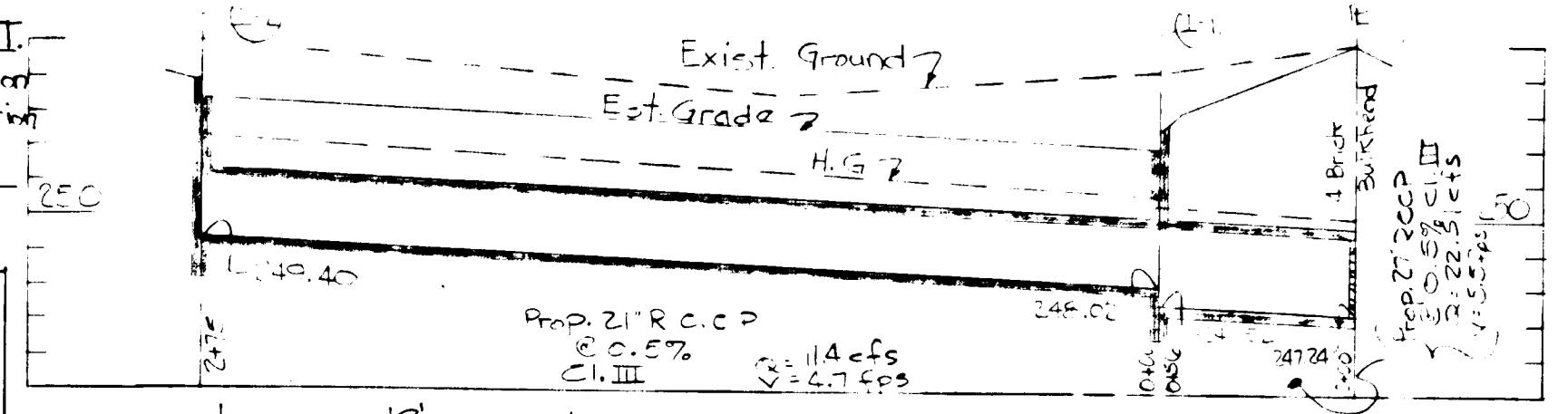


STRUCTURE		SCHEDULE			
Number	Type	Howard Co. Std. Detail	Top Elev.	Inv. In	Inv. Out
I-1	* Bit. Comb	D-99, Page 154	252.50	248.07	247.52
I-2	* Bit. Comb	D-99, Page 154	253.90	249.40	248.85
I-3	* Bit. Comb	D-99, Page 154	256.31	251.76	251.21
San M.H.-1	Standard	D-103, Page 158	258.76	248.89	248.79
San M.H.-2	Standard	D-103, Page 158	258.91	250.74	250.74

HOWARD SOIL CONSERVATION DIST.
 This Development Plan is Approved for Soil Erosion and Sediment Control by the Howard Soil Conservation District.
 Approved: *R. Stuart W. Zickman*
 Howard Soil Conservation Dist.
 Reviewed For: Howard S.C.D. Name
 and Meets Technical Requirements
 Signature: *Charles E. Mully* 5/5/73
 U.S. Soil Conservation Service



- GENERAL NOTES:**
- All Disturbed Areas To be Seeded in Conjunction With Howard County Soil Conservation Service and Howard County Planning Commission.
 - No Fences, Walls Or Signs.
 - Additional sediment control may be required as directed by the inspector.

- LEGEND:**
- Existing Contours
 - - - Proposed Contours
 - curb inlet protection
 - Approx. location of silt fence.

SITE DATA

1. Total Area of Tract	5.92 Ac ±
2. Existing Zoning	M-2
3. Floor Area	117,200 Sq. Ft.
4. Tax Map No.	45
5. Total Parking Spaces Provided	152
a. Customer parking & Visitor parking	35
b. Employee parking @ 2 Employees/Space	83
c. Maximum No. of Employees Allowed	1000
6. Total Sales Area	None At Present
7. Proposed Use of Building	Warehouses

APPROVED FOR PUBLIC WATER AND PUBLIC SEWERAGE SYSTEMS HOWARD COUNTY HEALTH DEPARTMENT
Charles W. D. 6/1/73
 COUNTY HEALTH OFFICER DATE

APPROVED HOWARD COUNTY OFFICE OF PLANNING AND ZONING
Alvin H. H. 6/13/73
 CHIEF DIVISION OF LAND DEVELOPMENT AND TRANSPORTATION PLANNING

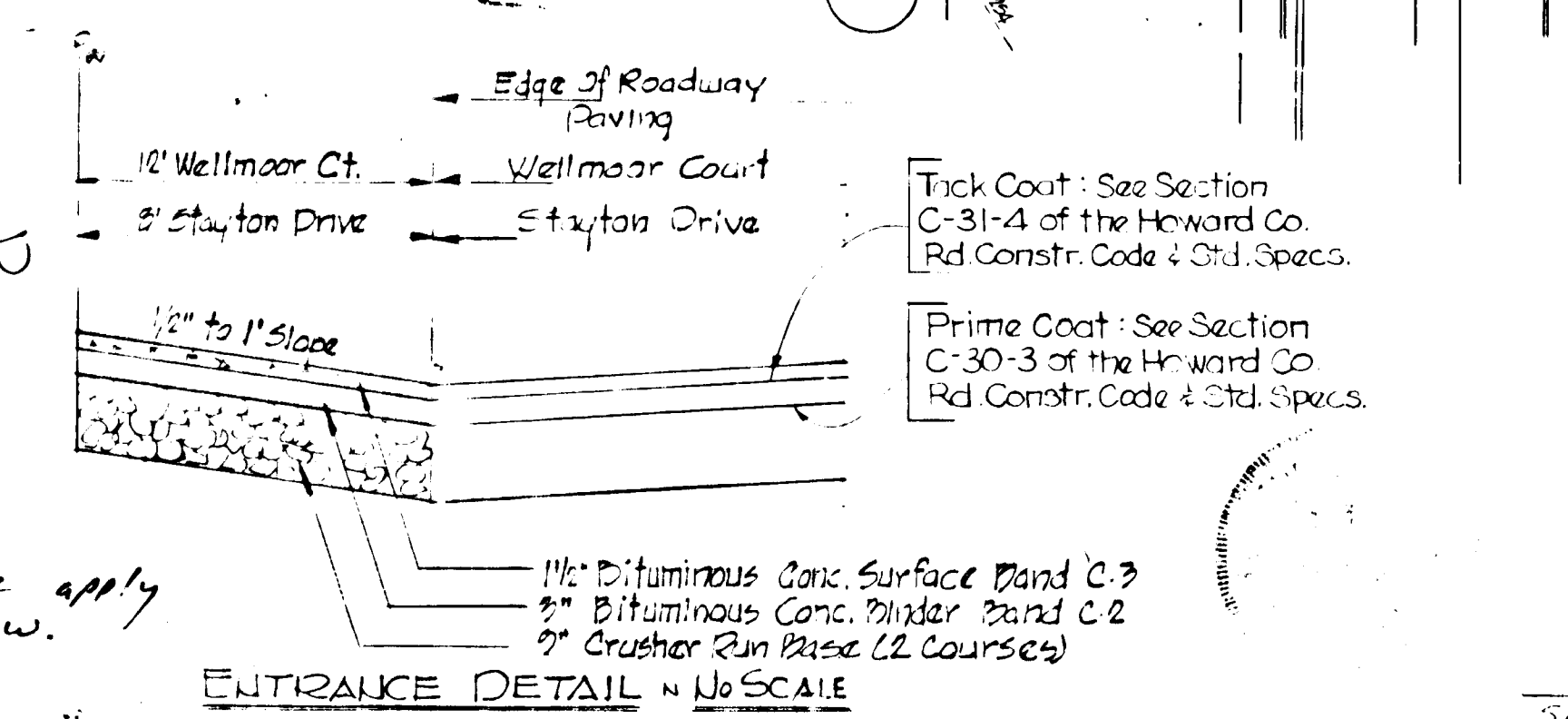
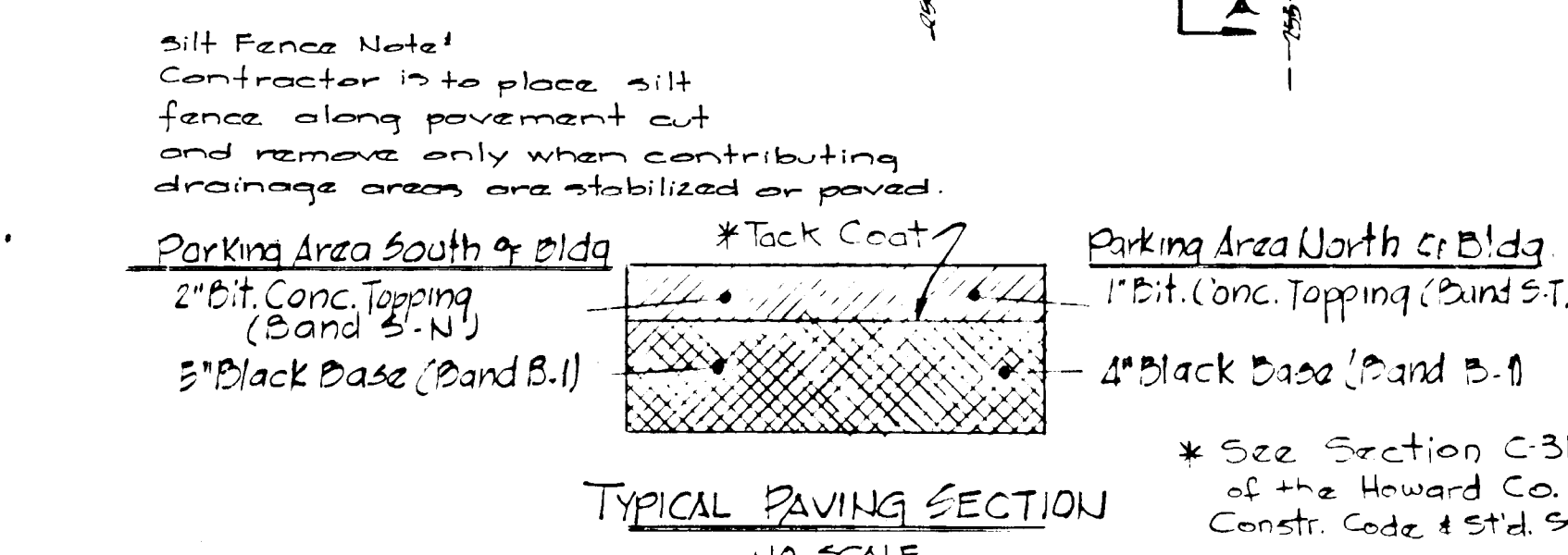
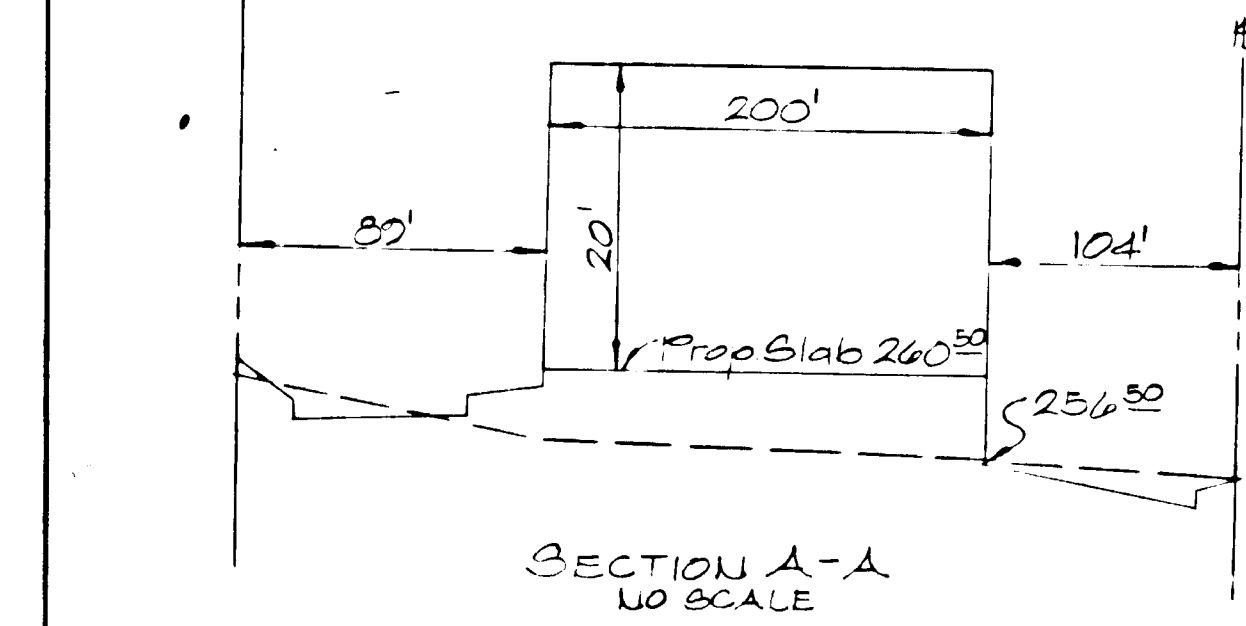
APPROVED FOR PUBLIC WATER, PUBLIC SEWERAGE AND STORM DRAINAGE SYSTEMS AND ROADS HOWARD COUNTY DEPARTMENT OF PUBLIC WORKS
W. A. W. 6/1/73
 DIRECTOR DATE

APPROVED
 DIVISION OF LAND DEVELOPMENT AND TRANSPORTATION PLANNING
 HOWARD COUNTY, MARYLAND
 DATE: 5/29/73

SITE DEVELOPMENT PLAN
BALTIMORE WASHINGTON INDUSTRIAL PARK
SPEC BUILDING 7
 HOWARD COUNTY MARYLAND ELECTION DIST. #6
 SCALE: 1" = 20' DATE: MARCH 26, 1973

OWNER & DEVELOPER: PATAPAGO PROPERTIES INC. 301 ST. PAUL STREET BALTIMORE MARYLAND 21202

ENGINEER: GEORGE W. STEPHENS JR. & ASSOC. 377 ALLEGHENY AVENUE TOWSON MARYLAND 21284



Date	Revision	By	App'd
2/25/74	Rev. storm drains, paving, curb & gutter for new entrance. Also rev. parking and add guardrail for trailer parking (By GLW)	MCP	

GLW's seal & signature apply only to revisions by GLW.

Charles E. Mully 3-26-73
 SIGNATURE OF ENGR. DATE