

LEGEND
 DRAINAGE DIVIDES
 EXIST. STRUCTURE
 DRAINAGE DIVIDES

OLD MONTGOMERY ROAD

TAMAR DRIVE

MAJOR'S LANE

APPROVED: FOR PUBLIC WATER AND PUBLIC SEWERAGE SYSTEMS HOWARD COUNTY HEALTH DEPARTMENT	
COUNTY HEALTH OFFICER	DATE
APPROVED: HOWARD COUNTY OFFICE OF PLANNING AND ZONING	
PLANNING DIRECTOR	DATE
CHIEF ENGINEER DIVISION OF LAND DEVELOPMENT	DATE
APPROVED: FOR PUBLIC WATER, PUBLIC SEWERAGE, STORM DRAINAGE SYSTEMS AND ROADS. HOWARD COUNTY DEPARTMENT OF PUBLIC WORKS	
DIRECTOR	DATE
CHIEF BUREAU OF HIGHWAYS	DATE

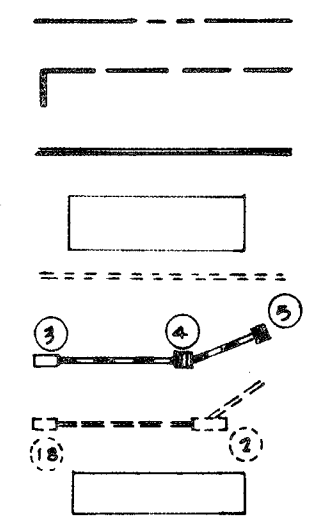
J. J. House

REVISED: 4-2-73

JEFFERS HILL ELEMENTARY SCHOOL	ASSOCIATED ENGINEERS, INC.	D D-1
	MARCH 1, 1973	
DRAINAGE DIVIDES		

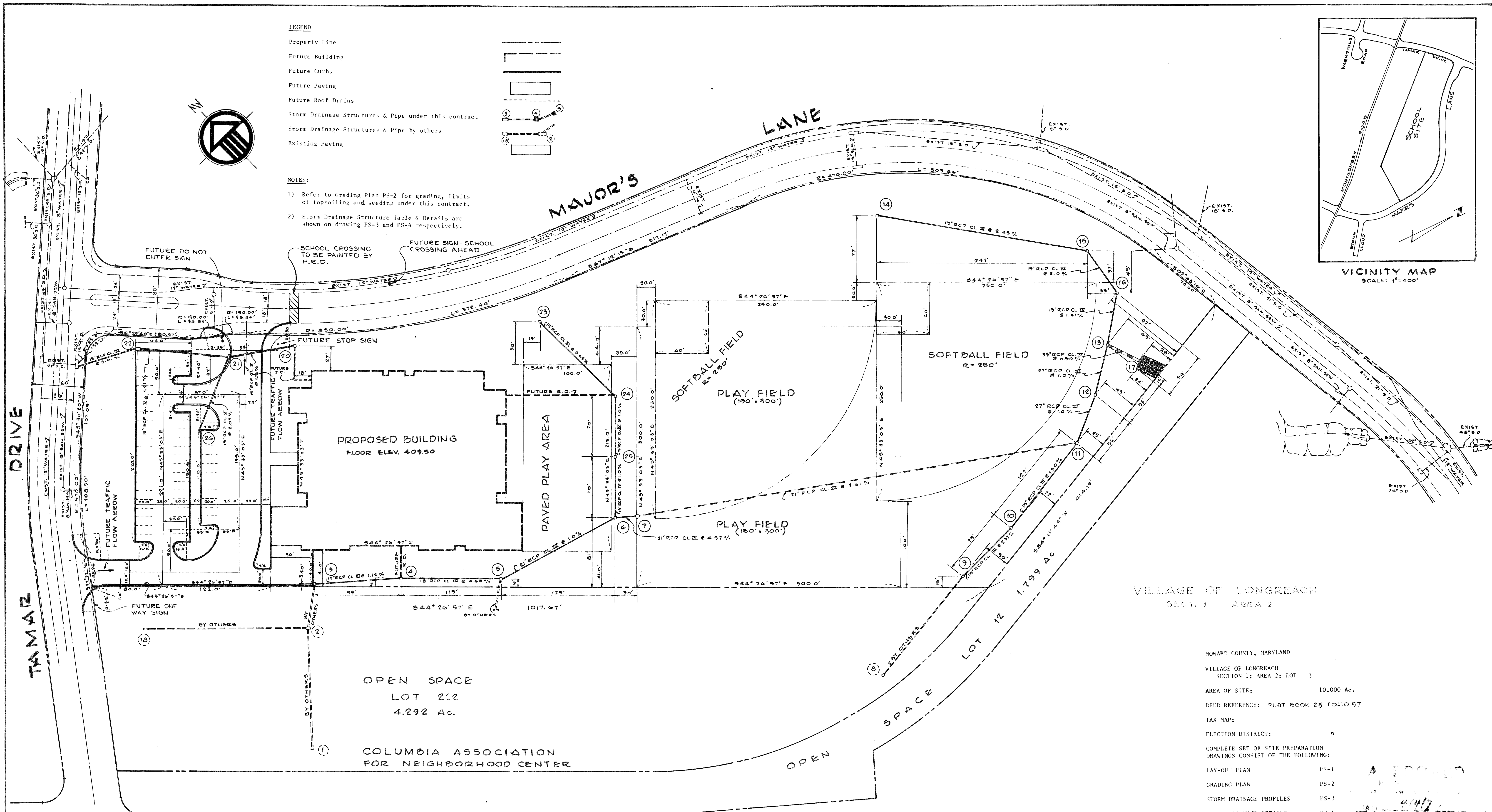
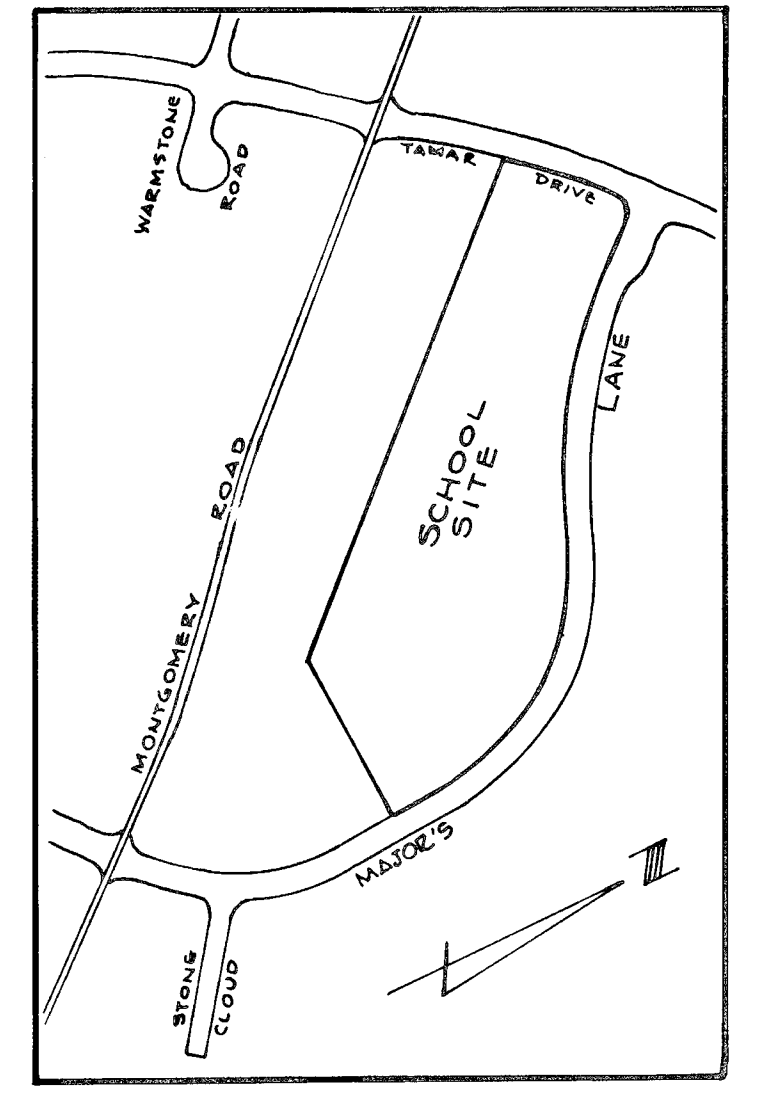
LEGEND

- Property Line
- Future Building
- Future Curbs
- Future Paving
- Future Roof Drains
- Storm Drainage Structures & Pipe under this contract
- Storm Drainage Structures & Pipe by others
- Existing Paving



NOTES:

- 1) Refer to Grading Plan PS-2 for grading, limits of topsoiling and seeding under this contract.
- 2) Storm Drainage Structure Table & Details are shown on drawing PS-3 and PS-4 respectively.



VILLAGE OF LONGREACH
SECTION 1 AREA 2

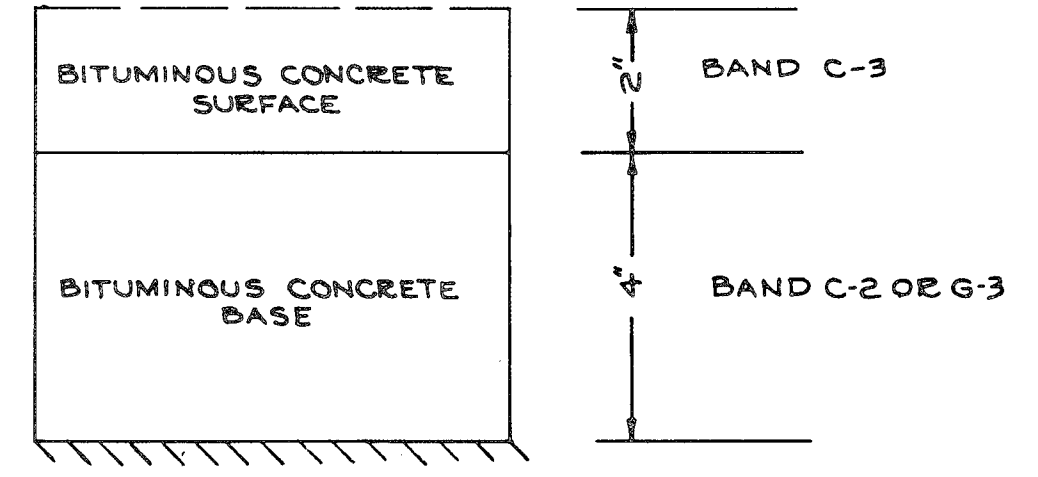
HOWARD COUNTY, MARYLAND
VILLAGE OF LONGREACH
SECTION 1; AREA 2; LOT 13
AREA OF SITE: 10,000 Ac.
DEED REFERENCE: PLAT 2004 25, FOLIO 57
TAX MAP:
ELECTION DISTRICT: 6
COMPLETE SET OF SITE PREPARATION DRAWINGS CONSIST OF THE FOLLOWING:
LAY-OUT PLAN PS-1
GRADING PLAN PS-2
STORM DRAINAGE PROFILES PS-3
STORM DRAINAGE DETAILS PS-4
SEDIMENT CONTROL PLAN PS-5
DRAINAGE DIVIDES DD-1
STORM DRAINAGE COMPUTATIONS 12 Pages

OLD MONTGOMERY ROAD

SCALE: 1"=50'

NOTES:

- 1) Street trees of 2" to 2 1/2" caliber with a height of 12' to 14' and planted 40' on center along Major's Lane and Tamar Drive shall be provided by H.R.D.
- 2) Future base will be primed in accordance with Section C-30-3 as provided in the Howard County Road Construction Code and Standard Specifications.
- 3) Future tack coat shall be in accordance with Section C-31-4 of the Howard County Road Construction Code and Standard Specifications.
- 4) Installation of future Traffic Control Devices shall be in accordance with the Manual of Uniform Traffic Control Devices, 1971 Edition.
- 5) Future curb to be Combination Curb and Gutter as shown on Drawing D-116 of the Howard County Road Construction Code and Standard Specifications.



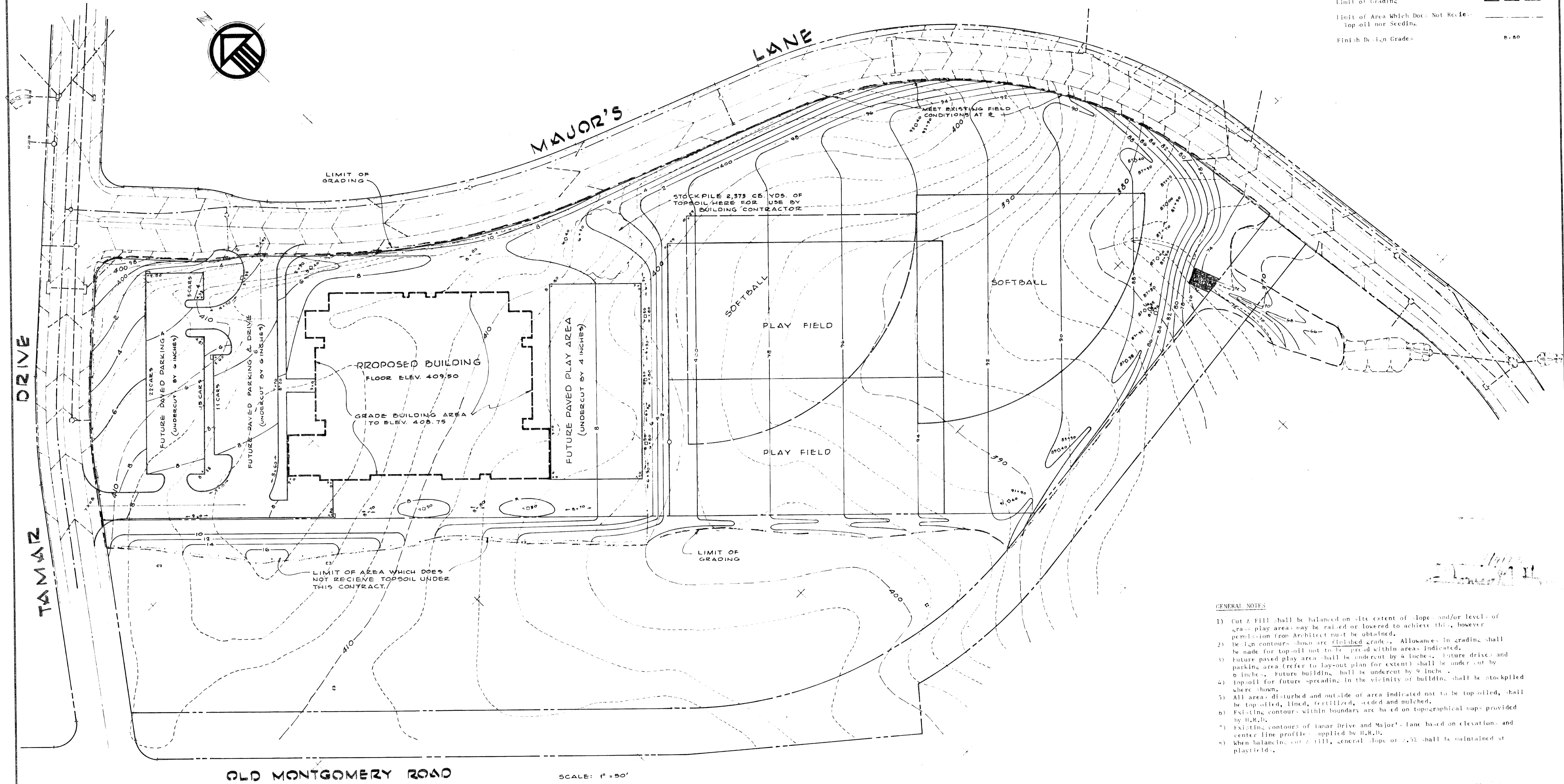
To be constructed in accordance with the Howard County Road Construction Code and Specifications.
FUTURE PAVING SECTION
NO SCALE

APPROVED: FOR PUBLIC WATER AND PUBLIC SEWERAGE SYSTEMS HOWARD COUNTY HEALTH DEPARTMENT	DATE: 3/1/73
COUNTY HEALTH OFFICER	DATE: 3/1/73
APPROVED: HOWARD COUNTY OFFICE OF PLANNING AND ZONING	DATE: 3/1/73
PLANNING DIRECTOR	DATE: 3/1/73
CHIEF ENGINEER DIVISION OF LAND DEVELOPMENT	DATE: 3/1/73
APPROVED: FOR PUBLIC WATER, PUBLIC SEWERAGE, STORM DRAINAGE SYSTEMS AND ROADS. HOWARD COUNTY DEPARTMENT OF PUBLIC WORKS	DATE: 3/1/73
DIRECTOR	DATE: 3/1/73
CHIEF BUREAU OF HIGHWAYS	DATE: 3/1/73

McLEOD, FERRARA, ENSIGN
CHARTERED ARCHITECTS
3406 WISCONSIN AVENUE, SUITE 1000
CHEVY CHASE, MARYLAND 20815
301/682-2776

PROJECT NAME JEPPER'S HILL ELEMENTARY SCHOOL	REVISED 3-26-73	JOB NO.
DRAWING TITLE LAYOUT PLAN	ASSOCIATED ENGINEERS, INC. CIVIL ENGINEERS & LAND SURVEYORS 8555 SIXTEENTH STREET SILVER SPRING MARYLAND 20910 TEL 301/589-7311	SHEET NO. PS-1
DATE: MARCH 1, 1973	REVISED 4-11-73	

LEGEND	
Existing Contours	--- 400 ---
Design Contours	--- 90 ---
Limit of Grading	---
Limit of Area Which Does Not Receive Topsoil nor Seeding	---
Finish Design Grades	8.50



- GENERAL NOTES
- 1) Cut & Fill shall be balanced on site extent of slope and/or level of grass play areas may be raised or lowered to achieve this, however permission from Architect must be obtained.
 - 2) Design contours shown are finished grade. Allowances in grading shall be made for topsoil not to be spread within areas indicated.
 - 3) Future paved play area shall be undercut by 4 inches. Future drive and parking area (refer to lay-out plan for extent) shall be undercut by 6 inches. Future building shall be undercut by 9 inches.
 - 4) Topsoil for future spreading in the vicinity of building shall be stockpiled where shown.
 - 5) All area disturbed and outside of area indicated not to be topsoiled, shall be topsoiled, limed, fertilized, seeded and mulched.
 - 6) Existing contours within boundary are based on topographical maps provided by H.R.D.
 - 7) Existing contours of Tamar Drive and Major's Lane based on elevations and center line profiles supplied by H.R.D.
 - 8) When balancing cut & fill, general slope of 2.5% shall be maintained at playfields.

OLD MONTGOMERY ROAD SCALE: 1" = 50'

APPROVED: FOR PUBLIC WATER AND PUBLIC SEWERAGE SYSTEMS HOWARD COUNTY HEALTH DEPARTMENT	
COUNTY HEALTH OFFICER	DATE
APPROVED: HOWARD COUNTY OFFICE OF PLANNING AND ZONING	
PLANNING DIRECTOR	DATE
CHIEF ENGINEER DIVISION OF LAND DEVELOPMENT	DATE
APPROVED: FOR PUBLIC WATER, PUBLIC SEWERAGE, STORM DRAINAGE SYSTEMS AND ROADS. HOWARD COUNTY DEPARTMENT OF PUBLIC WORKS	
DIRECTOR	DATE
	CHIEF BUREAU OF HIGHWAYS, DATE

McLEOD, FERRARA, ENSIGN
CHARTERED ARCHITECTS
 6454 WISCONSIN AVENUE, SUITE 1525
 CHEVY CHASE, MARYLAND 20015
 301/852-2775

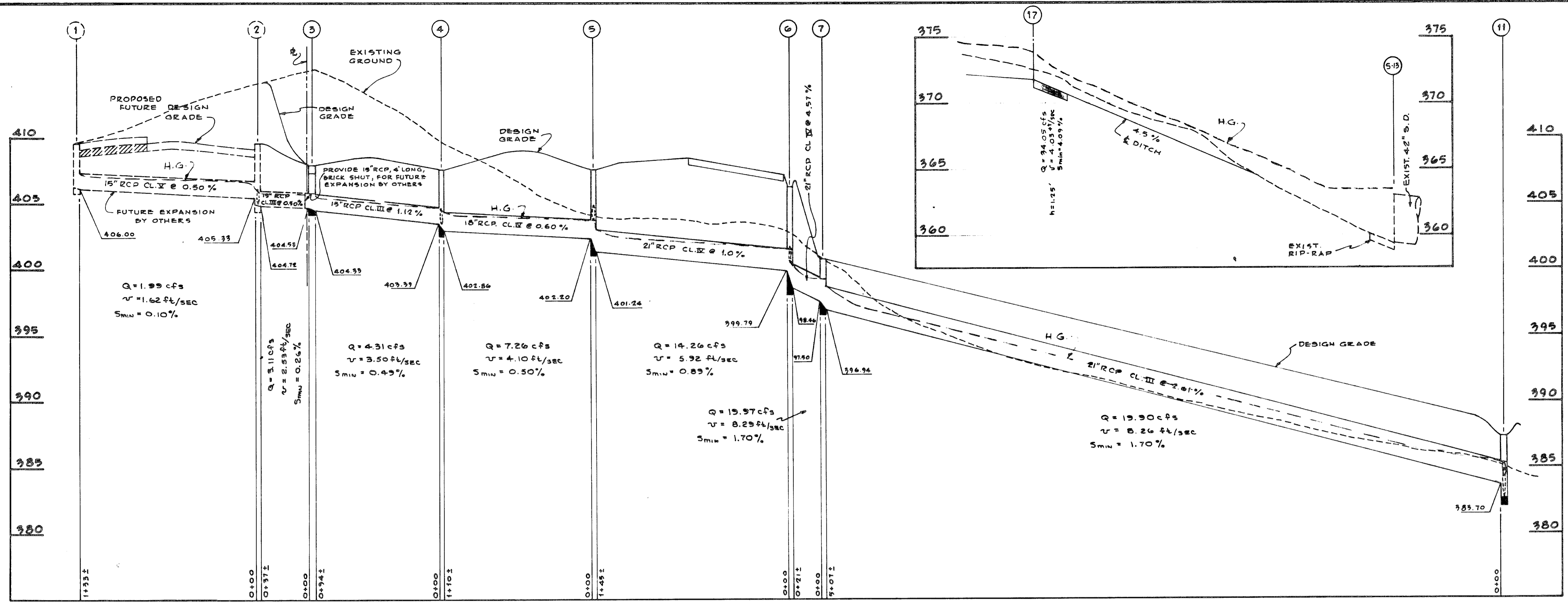
JEPPER'S HILL ELEMENTARY SCHOOL

ASSOCIATED ENGINEERS, INC.
 1400 ENGINEERS & ARCHITECTS
 600 SIXTEENTH STREET
 SILVER SPRING, MARYLAND 20910
 TEL. 301/589-7111

REVISED 3-26-73

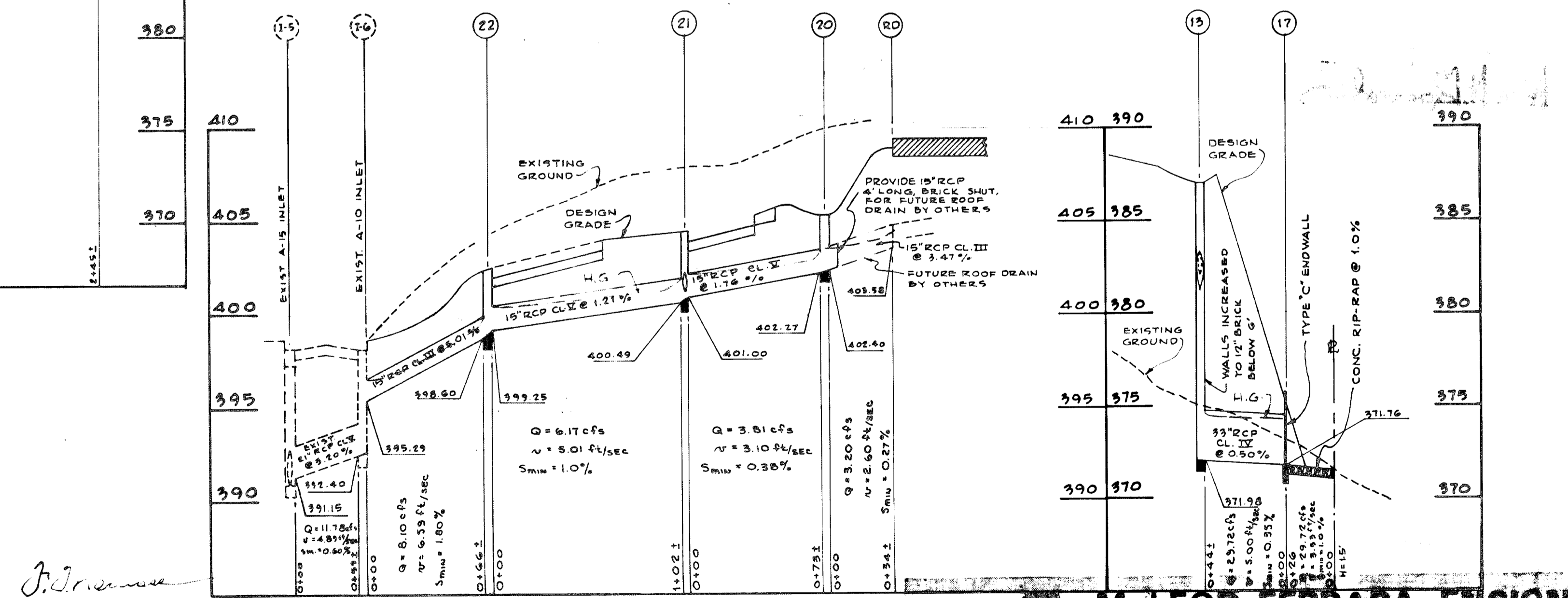
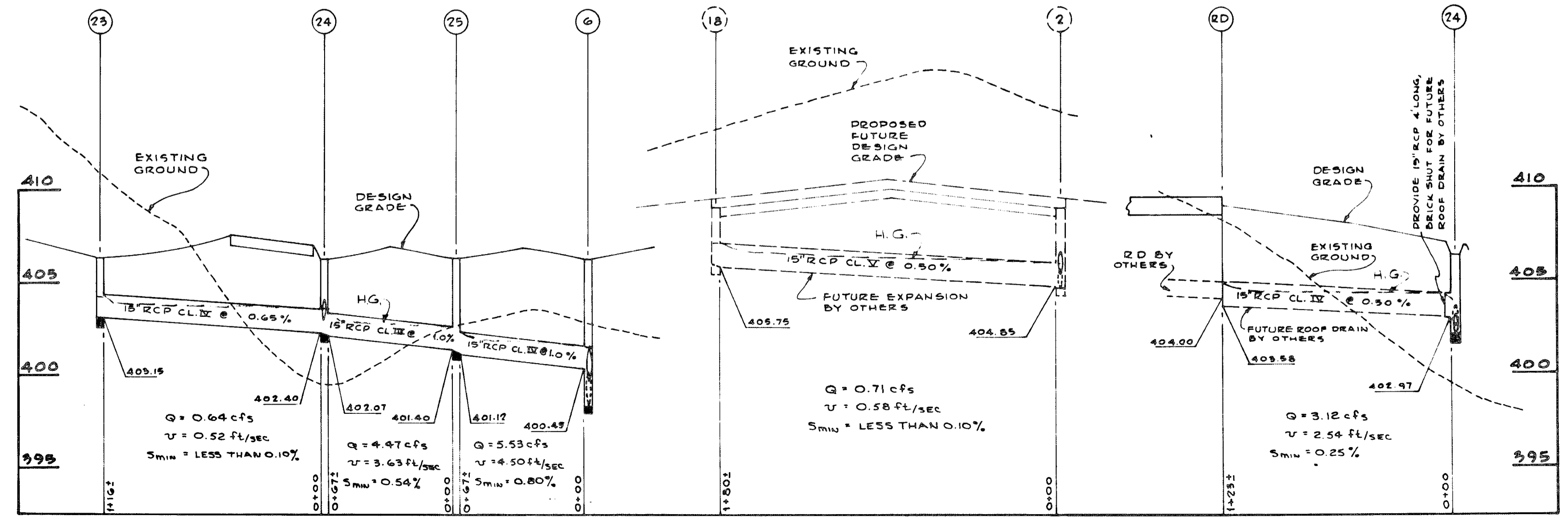
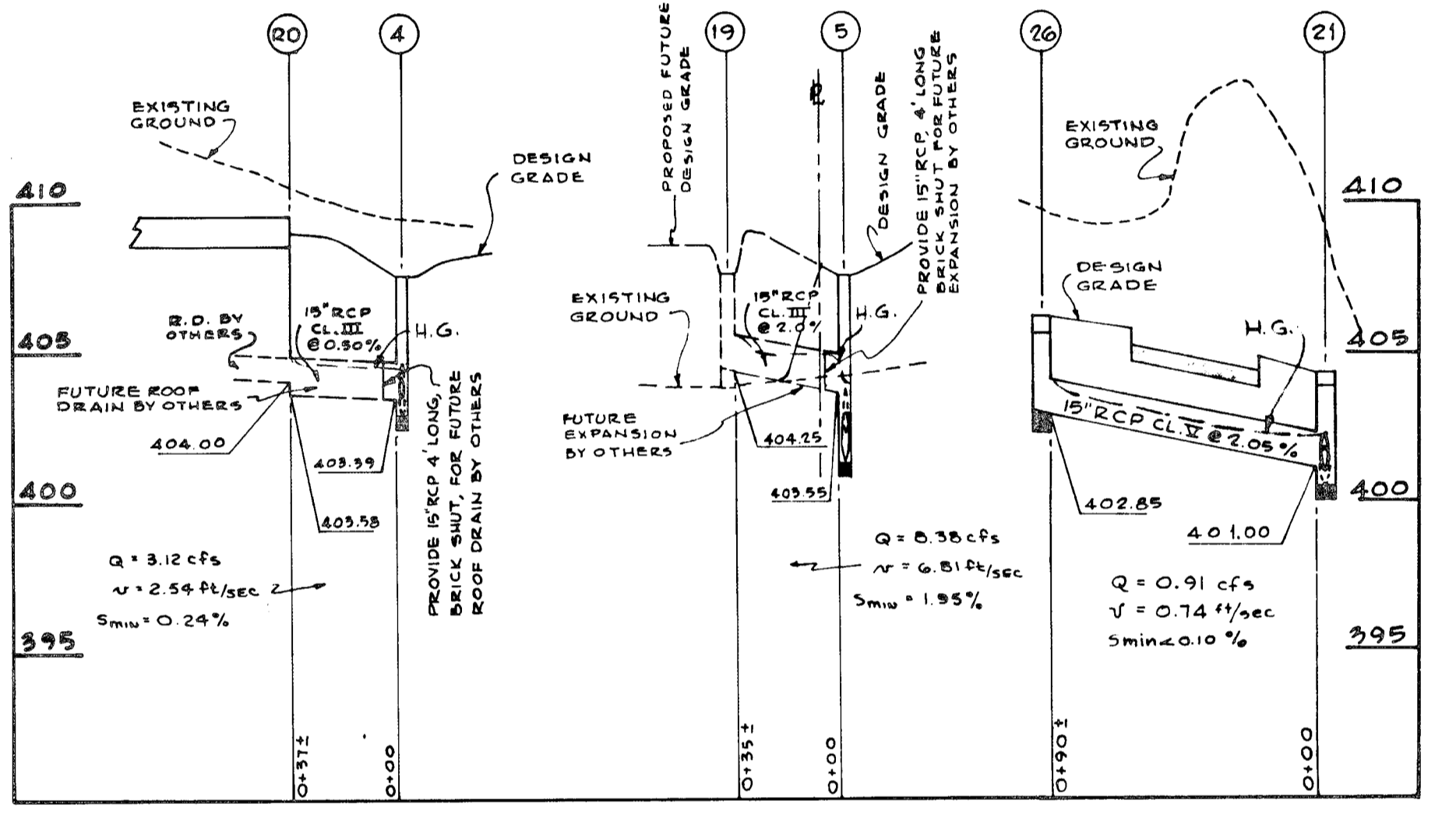
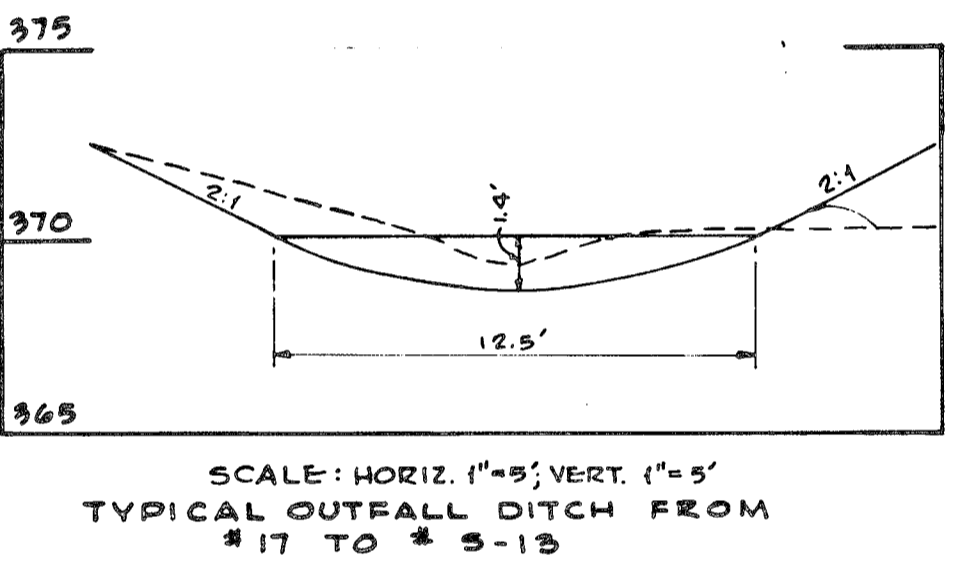
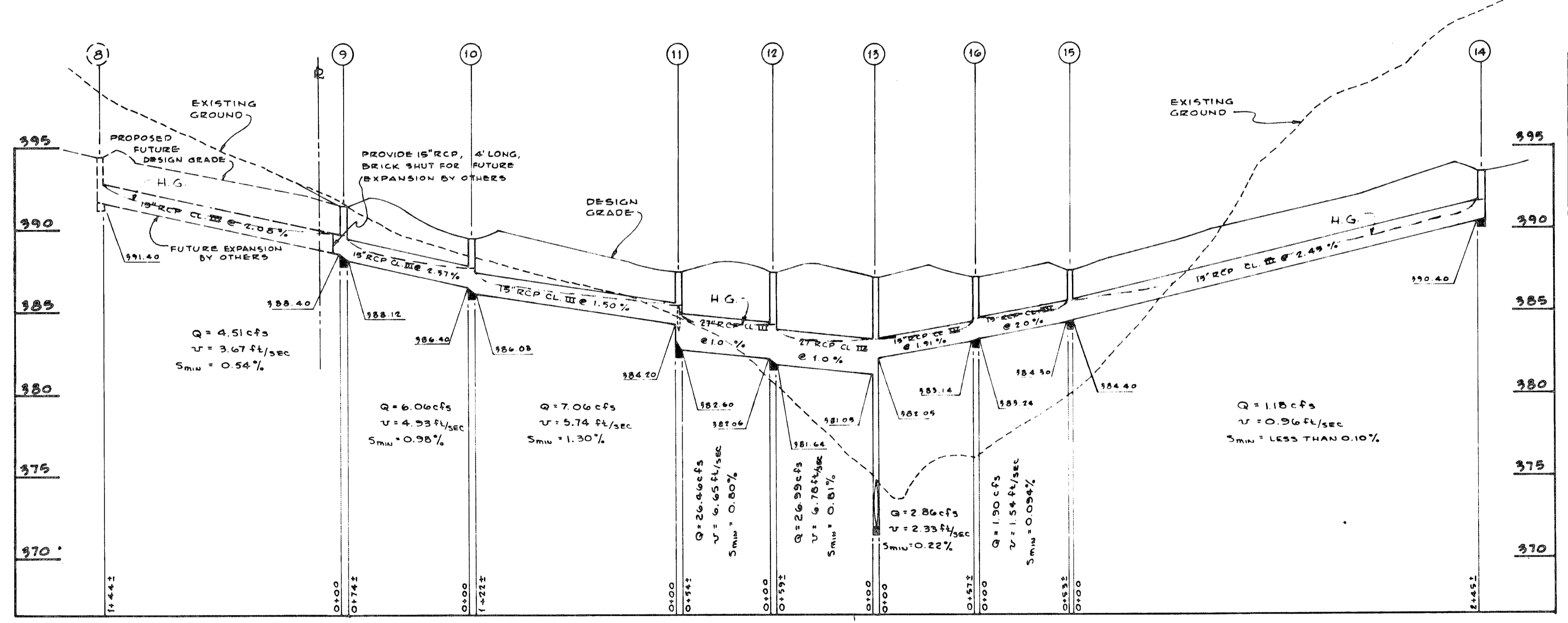
DATE: MARCH 1, 1973

PS-2



STRUCTURE TABLE

NO.	TYPE	TOP ELEV.	REMARKS
3	A-5 INLET	407.80	HOWARD COUNTY STD. DWG. 64-A
4	SPECIAL "A" INLET	407.50	AS DETAILED
5	SPECIAL "A" INLET	407.40	" "
6	SPECIAL "A" INLET	406.40	" "
7	STANDARD MANHOLE	400.75	HOWARD COUNTY STD. DWG. D-103
9	SPECIAL "A" INLET	391.40	AS DETAILED
10	SPECIAL "A" INLET	389.40	" "
11	SPECIAL "A" INLET	387.55	" "
12	SPECIAL "A" INLET	387.35	" "
13	SPECIAL "A" INLET	387.00	" "
14	SPECIAL "A" INLET	389.40	" "
15	SPECIAL "A" INLET	387.40	" "
16	SPECIAL "A" INLET	387.00	" "
17	TYPE "C" ENDWALL	375.76	HOWARD COUNTY STD. DWG. D-52
20	SPECIAL "A" INLET	409.40	AS DETAILED
21	A-5 INLET	404.20	HOWARD COUNTY STD. DWG. 64-A
22	A-5 INLET	409.10	" "
23	SPECIAL "A" INLET	409.40	AS DETAILED
24	SPECIAL "A" INLET	409.50	" "
25	SPECIAL "A" INLET	406.90	" "
26	TYPE "C" INLET	404.45	" "
1	A-5 INLET	409.80	BY OTHERS
2	A-5 INLET	409.90	" "
8	SPECIAL "A" INLET	394.50	" "
18	A-5 INLET	409.50	" "
19	SPECIAL "A" INLET	407.50	" "



APPROVED: FOR PUBLIC WATER AND PUBLIC SEWERAGE SYSTEMS
HOWARD COUNTY HEALTH DEPARTMENT

APPROVED: HOWARD COUNTY OFFICE OF PLANNING AND ZONING

APPROVED: FOR PUBLIC WATER, PUBLIC SEWERAGE, STORM DRAINAGE SYSTEMS AND ROADS.
HOWARD COUNTY DEPARTMENT OF PUBLIC WORKS

SCALE: HORIZ. 1"=50'; VERT. 1"=5'

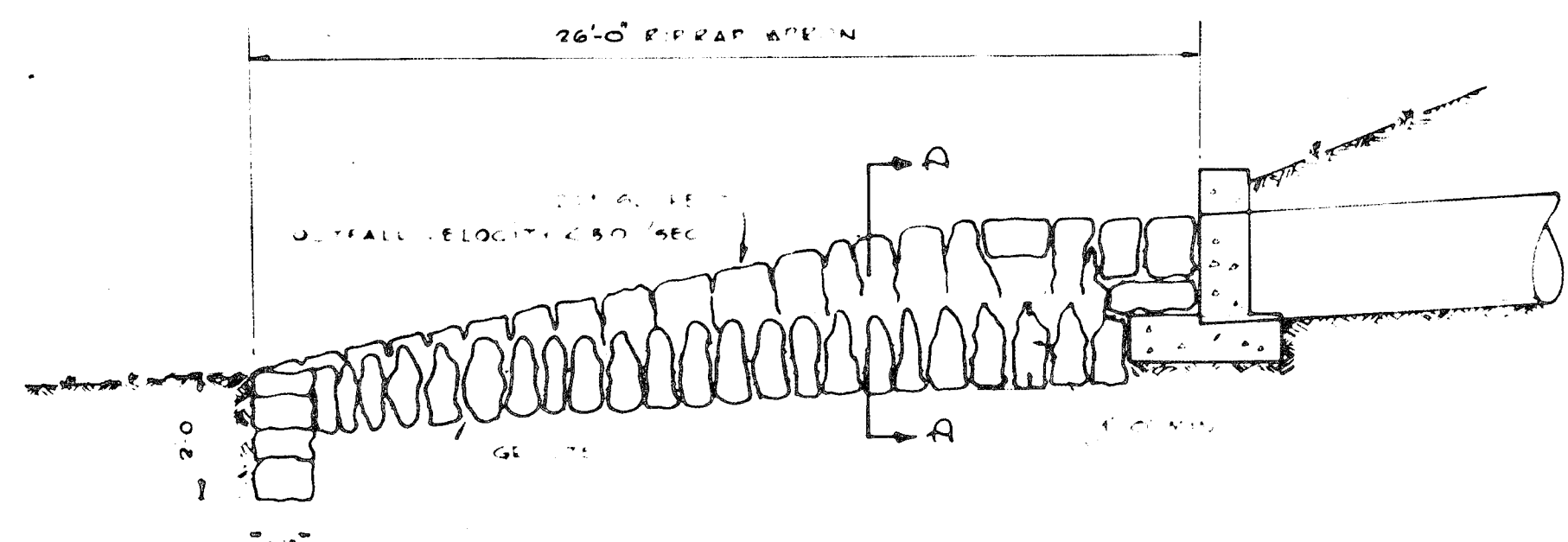
McLEOD, FERRARA, ENSIGN
CHARTERED ARCHITECTS
REVISED 9-25-73

JEPPER'S HILL
ELEMENTARY SCHOOL

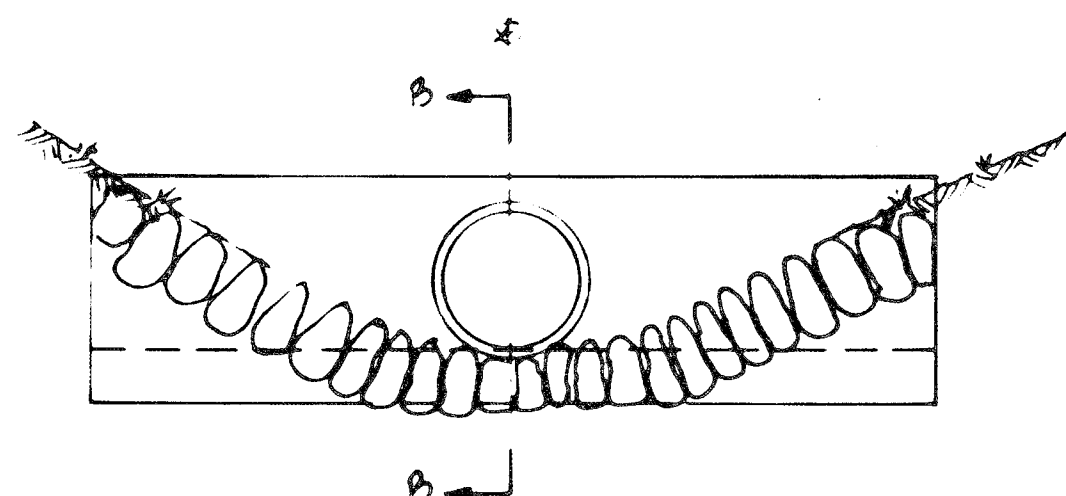
ASSOCIATED ENGINEERS, INC.
CIVIL ENGINEERS & LAND SURVEYORS
1955 SIXTEENTH STREET
SILVER SPRING, MARYLAND 20910
TEL. 301-589-7311

JOB NO. _____
SHEET NO. **PS-3**

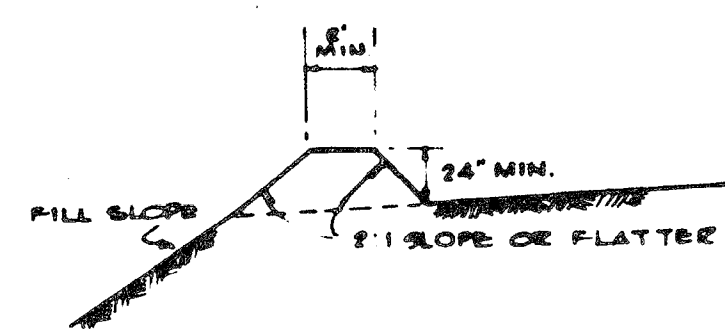
DRAWING TITLE: **STORM DRAINAGE PROFILES**
DATE: MARCH 1, 1973



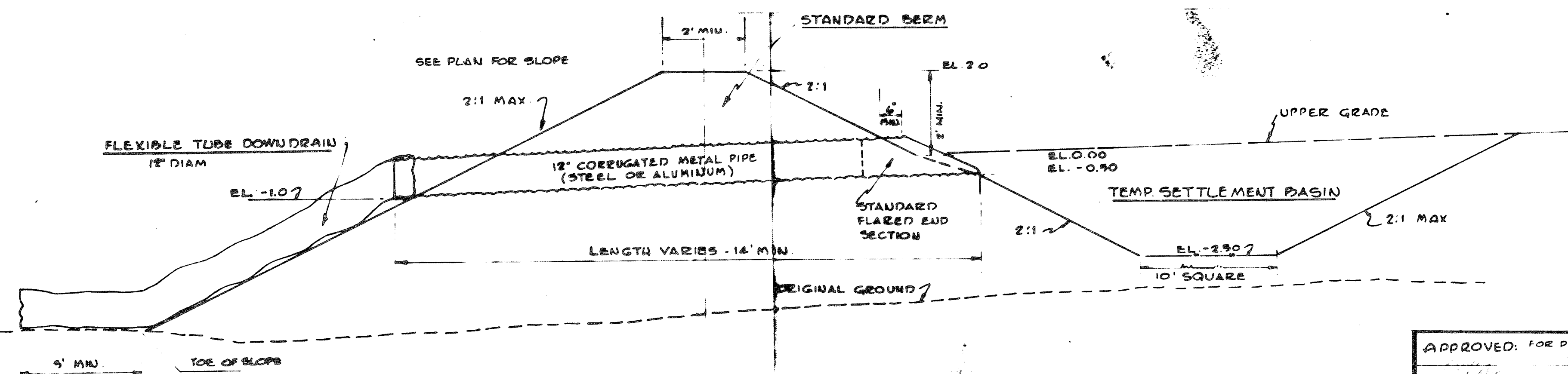
SECTION B-B



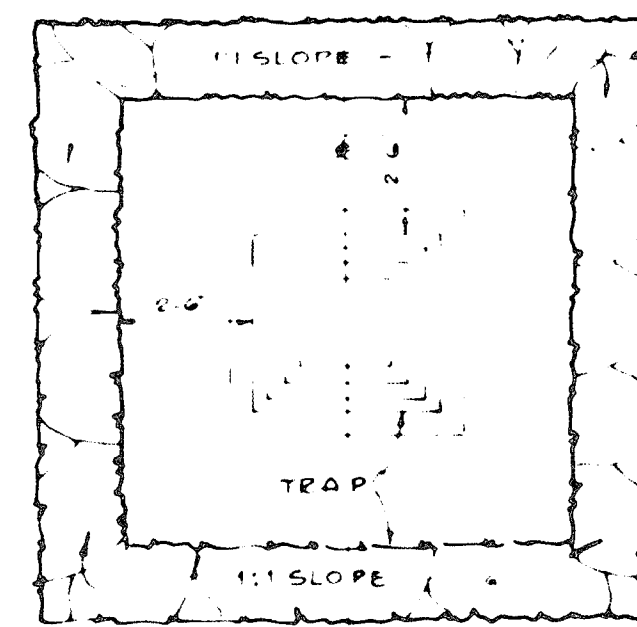
ELEVATION & SECTION A-A
CONCRETE ENDWALL & RIP-RAP APRON
NOT TO SCALE



TYPICAL SECTION THROUGH DIVERSION DIKE
NO SCALE

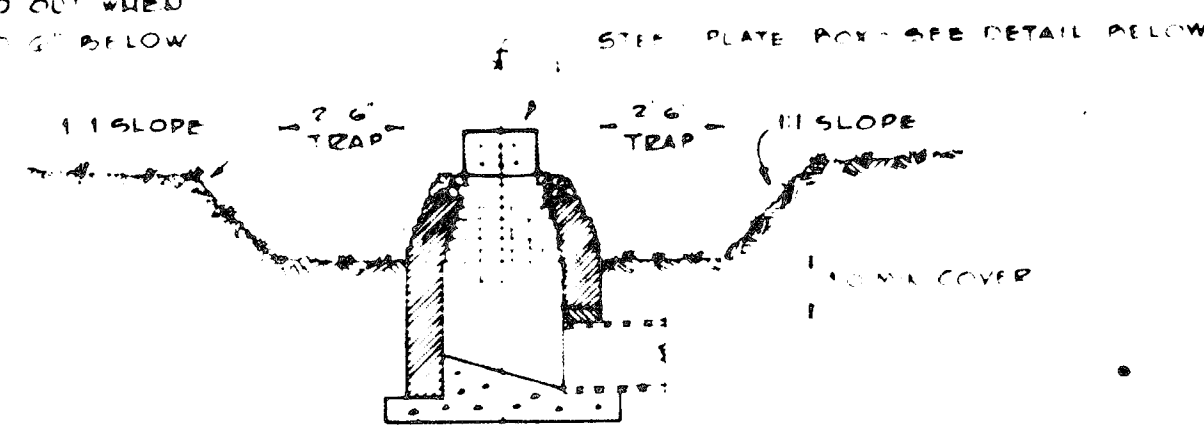


TYPICAL SECTION
SLOPE DRAIN FOR TEMPORARY ROUTING
OF STORM WATER FLOW OVER CUT & FILL SLOPES.

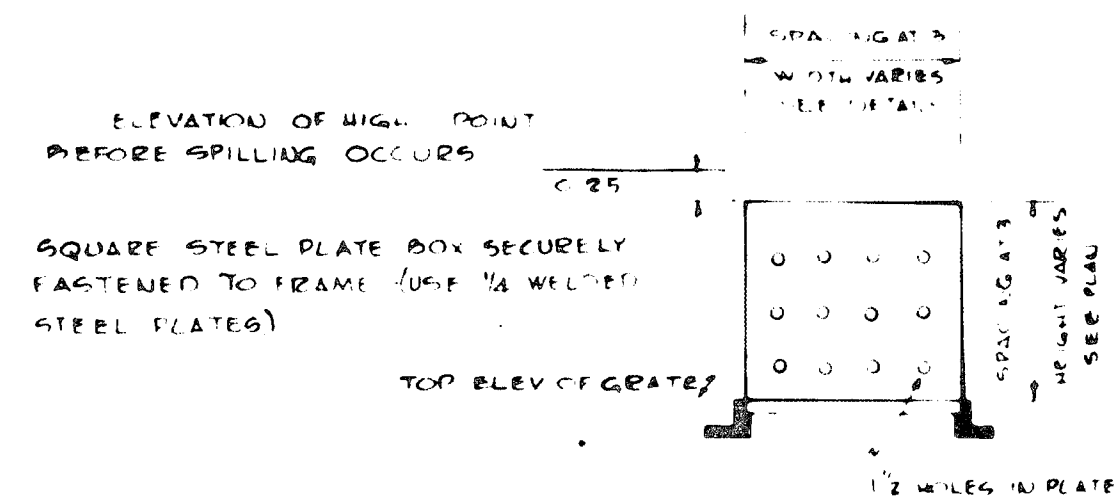


TYPICAL PLAN

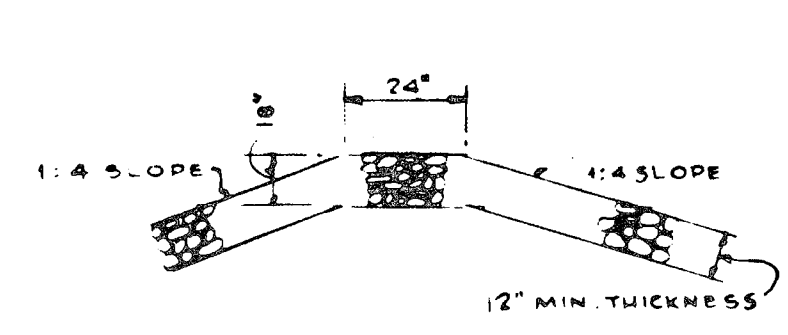
NOTE: TRAP TO BE CLEANED OUT WHEN
WATER LEVEL RISES TO 2" BELOW
TOP OF FRAME



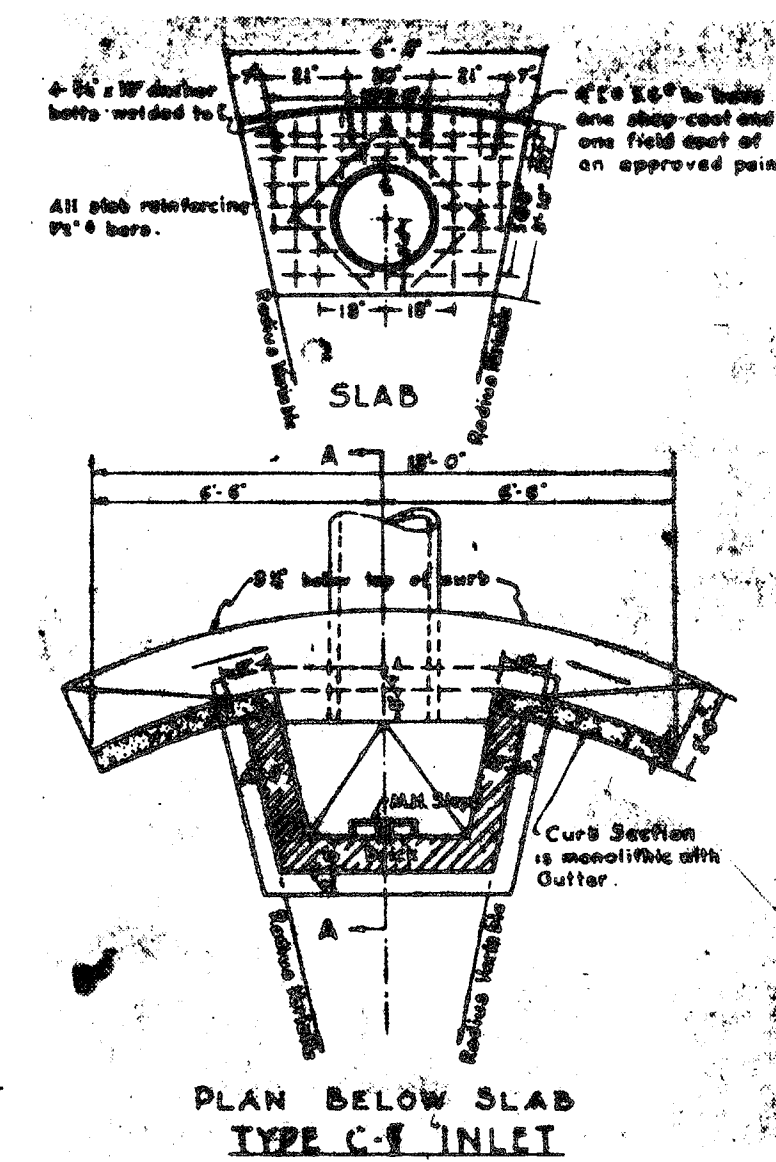
TYPICAL SECTION



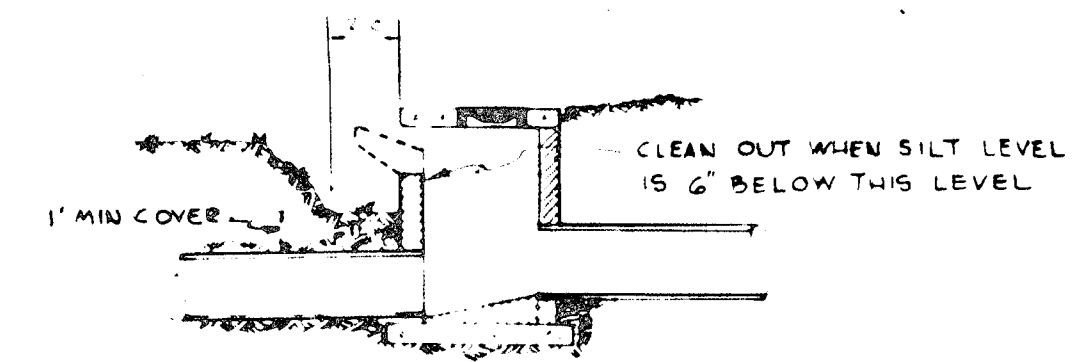
DETAIL OF STEEL PLATE BOX
SILT TRAP FOR YARD DRAIN
NO SCALE



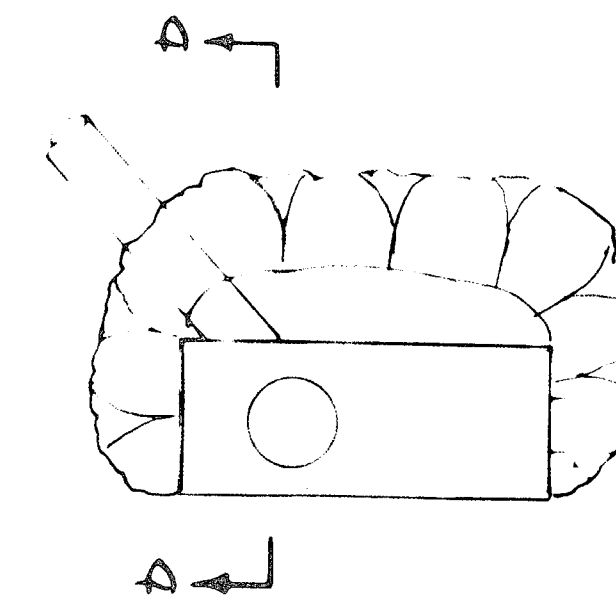
STONE INTERCEPTOR DIKE
AT ENTRANCE
NO SCALE



PLAN BELOW SLAB
TYPE C-V INLET

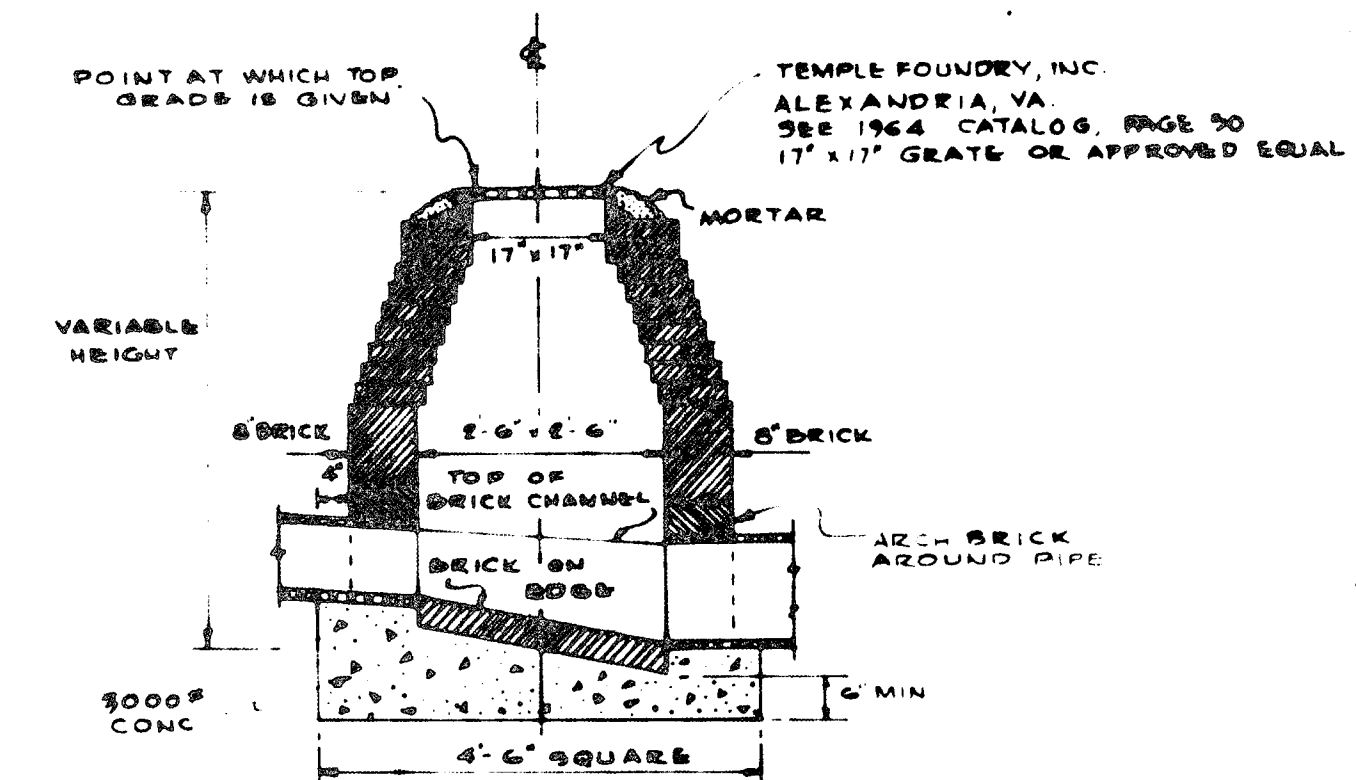


CROSS-SECTION A-A



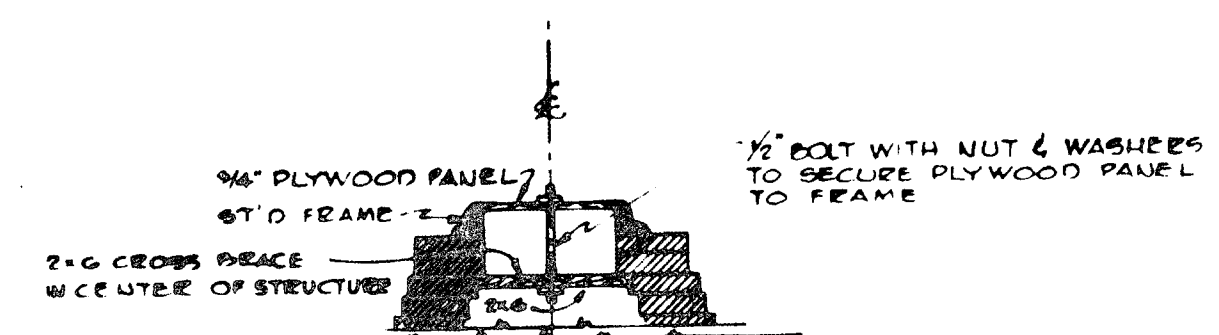
PLAN VIEW

TEMPORARY SILT TRAP FOR
CURB INLETS
(TYPICAL)




SPECIAL 'A' GRATE INLET
SCALE: 1/2" = 1'-0"

NOTE: SPECIAL TYPE 'D' GRATE INLET IS SIMILAR HOWEVER USE
24" x 24" GRATE SHOWN IN CATALOG OF TEMPLE FOUNDRY
ALEXANDRIA, VA. PAGE 96 WITH 1" BAR WIDTH AND 3/4"
OPENING. BRICK OPENING OF STRUCTURE HAS TO BE ADJUSTED
ACCORDINGLY.



INLET FRAME W/TEMPORARY PLYWOOD TOP
FOR SEDIMENT CONTROL

APPROVED: FOR PUBLIC WATER AND PUBLIC SEWERAGE SYSTEMS HOWARD COUNTY HEALTH DEPARTMENT	
COUNTY HEALTH OFFICER	DATE
APPROVED: HOWARD COUNTY OFFICE OF PLANNING AND ZONING	
PLANNING DIRECTOR	DATE
APPROVED: FOR PUBLIC WATER, PUBLIC SEWERAGE, STORM DRAINAGE SYSTEMS AND ROADS HOWARD COUNTY DEPARTMENT OF PUBLIC WORKS	
DIRECTOR	DATE
CHIEF BUREAU OF HIGHWAYS, DATE	

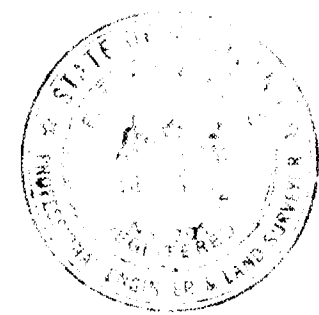

McLEOD, FERRARA, ENSIGN
 CHARTERED ARCHITECTS
 5454 WISCONSIN AVENUE, SUITE 1525
 CHEVY CHASE, MARYLAND 20015
 301/852-2775
 REVISED 3-26-73

JEPPER'S HILL
 ELEMENTARY SCHOOL

STORM DRAINAGE DETAILS

ASSOCIATED ENGINEERS, INC.
 1000 WOODLAND AVENUE
 SUITE 100 NEW STREET
 COLUMBIA, MARYLAND 21046
 TEL. 301/897-7311

MARCH 1, 1973
 PS-4



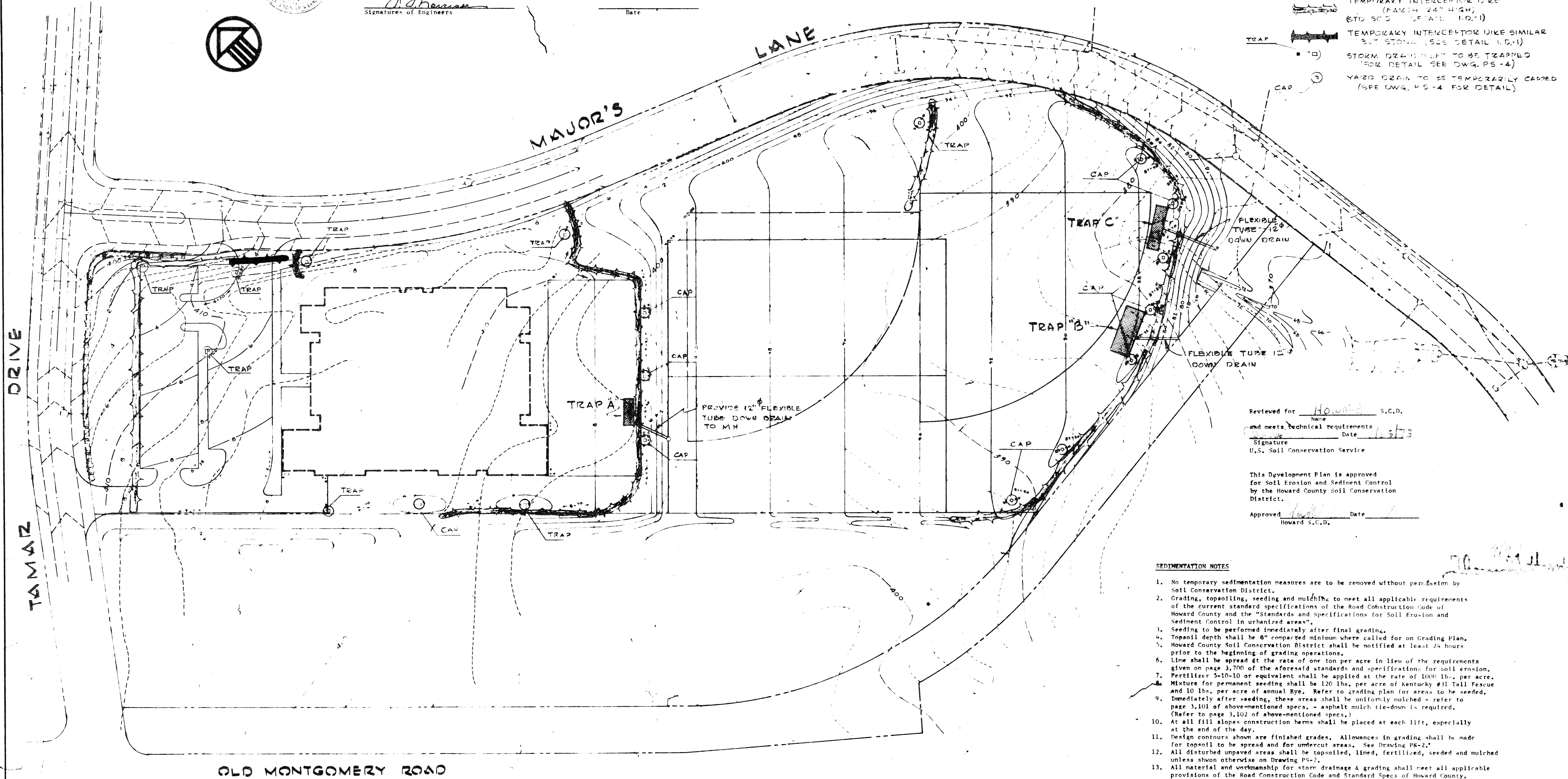
CERTIFICATE

"I certify that this plan of Erosion and Sediment Control represents a practical and workable plan based on my personal knowledge of the site conditions and that it was prepared in accordance with the requirements of the Howard County Soil Conservation District."

Signatures of Engineers: *J. J. Johnson* Date: _____

LEGEND

- G2--- EXISTING CONTOURS
- TRAP TRAP
- TEMPORARY SEDIMENT TRAP (STD. DETAIL MD-388-1)
- TEMPORARY INTERCEPTOR DIKE (FACED 24" HIGH, STD. DETAIL I.D.-1)
- TEMPORARY INTERCEPTOR DIKE SIMILAR BUT STONE (STD. DETAIL I.D.-1)
- STORM DRAIN LEFT TO BE TRAPPED (FOR DETAIL SEE DWG. PS-4)
- YARD DRAIN TO BE TEMPORARILY CAPPED (SEE DWG. PS-4 FOR DETAIL)



Reviewed for Howard S.C.D.
 Name _____
 and meets technical requirements Date 4/5/73
 Signature _____
 U.S. Soil Conservation Service

This Development Plan is approved for Soil Erosion and Sediment Control by the Howard County Soil Conservation District.
 Approved _____ Date _____
 Howard S.C.D.

SEDIMENTATION NOTES

- No temporary sedimentation measures are to be removed without permission by Soil Conservation District.
- Grading, topsoiling, seeding and mulching to meet all applicable requirements of the current standard specifications of the Road Construction Code of Howard County and the "Standards and Specifications for Soil Erosion and Sediment Control in urbanized areas".
- Seeding to be performed immediately after final grading.
- Topsoil depth shall be 6" compacted minimum where called for on Grading Plan.
- Howard County Soil Conservation District shall be notified at least 24 hours prior to the beginning of grading operations.
- Lime shall be spread at the rate of one ton per acre in lieu of the requirements given on page 3.700 of the aforesaid standards and specifications for soil erosion.
- Fertilizer 5-10-10 or equivalent shall be applied at the rate of 1000 lbs. per acre. Mixture for permanent seeding shall be 120 lbs. per acre of Kentucky #31 Tall Fescue and 10 lbs. per acre of annual Rye. Refer to grading plan for areas to be seeded.
- Immediately after seeding, these areas shall be uniformly mulched - refer to page 3.101 of above-mentioned specs. - asphalt mulch tie-down is required. (Refer to page 3.102 of above-mentioned specs.)
- At all fill slopes construction berms shall be placed at each lift, especially at the end of the day.
- Design contours shown are finished grades. Allowances in grading shall be made for topsoil to be spread and for undercut areas. See Drawing PS-2.
- All disturbed unpaved areas shall be topsoiled, limed, fertilized, seeded and mulched unless shown otherwise on Drawing PS-2.
- All material and workmanship for storm drainage & grading shall meet all applicable provisions of the Road Construction Code and Standard Specs of Howard County.

OLD MONTGOMERY ROAD

SEDIMENT TRAP SCHEDULE (REQUIRED STORAGE PER DISTURBED ACRE = 67CUYDS)

TRAP	AREA	LENGTH (A)	WIDTH (A)	DEPTH (A)
A	1.0	30.0	12.0	5.0
B	3.10	55.0	22.0	4.70
C	1.76	50.0	12.0	5.0

CERTIFICATE
 By the Developer:
 "I certify that all Development and/or Construction will be done according to this Plan of Development and Plan for Erosion and Sediment Control, and I also authorize periodic on-site inspection by the Howard County Soil Conservation District of their authorized Agents, as are deemed necessary deviation from this plan will not be made unless authorized by the Howard County Soil Conservation District."
 Signature of Developer: _____ Date: 4/11/73

APPROVED: FOR PUBLIC WATER AND PUBLIC SEWERAGE SYSTEMS
 HOWARD COUNTY HEALTH DEPARTMENT
 COUNTY HEALTH OFFICER: _____ DATE: _____

APPROVED: HOWARD COUNTY OFFICE OF PLANNING AND ZONING
 PLANNING DIRECTOR: _____ DATE: _____
 CHIEF ENGINEER DIVISION OF LAND DEVELOPMENT: _____ DATE: _____

APPROVED: FOR PUBLIC WATER, PUBLIC SEWERAGE, STORM DRAINAGE SYSTEMS AND ROADS
 HOWARD COUNTY DEPARTMENT OF PUBLIC WORKS
 DIRECTOR: _____ DATE: _____ CHIEF BUREAU OF HIGHWAYS: _____ DATE: _____

McLEOD, FERRARA, ENSIGN
 CHARTERED ARCHITECTS
 6454 WISCONSIN AVENUE, SUITE 1628
 CHEVY CHASE, MARYLAND 20815
 301/852-2778

JEFFERS HILL ELEMENTARY SCHOOL

ASSOCIATED ENGINEERS, INC.
 1100 WASHINGTON AVENUE, SUITE 100
 WASHINGTON, D.C. 20004
 TEL: 202-546-7111

SEDIMENT CONTROL PLAN
 1" = 50'
 MAR 21, 1973
 4-11-73

PS-5