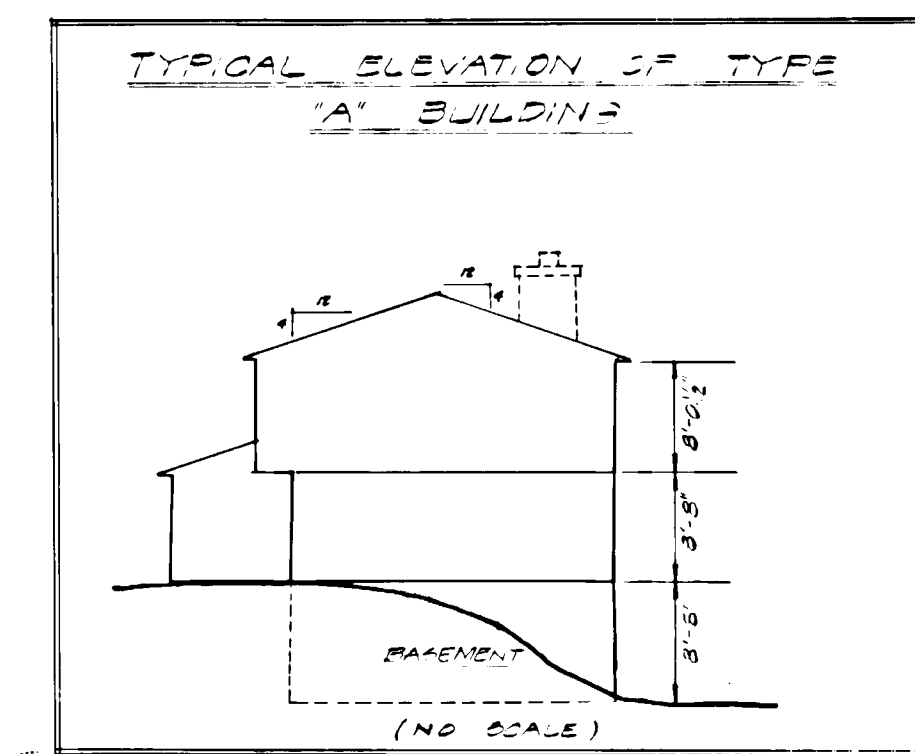
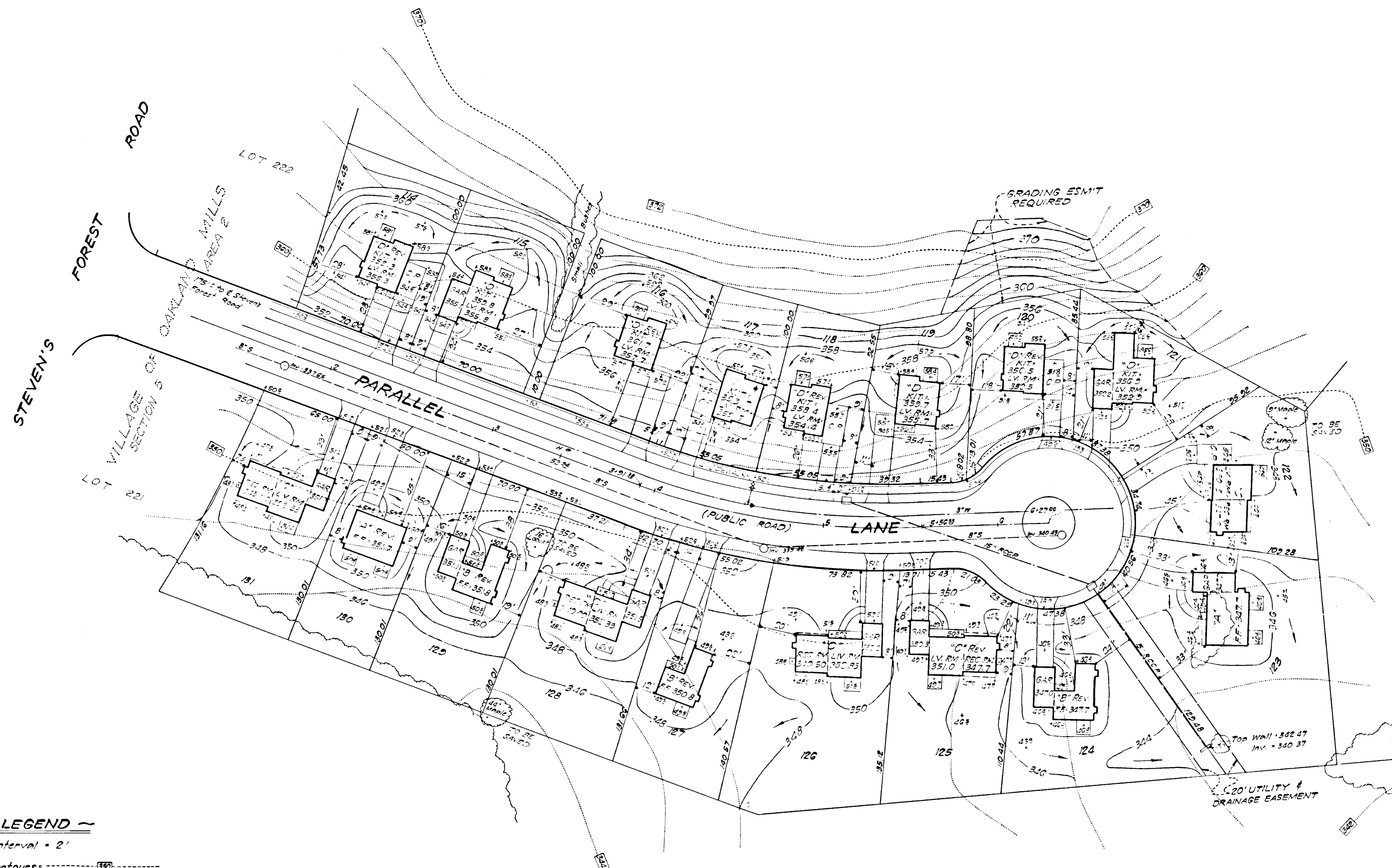


VICINITY MAP  
SCALE 1" = 2000'



~ LEGEND ~

1. Contour Interval = 2'
2. Existing Contours - - - - -
3. Proposed Contours - - - - -
4. Spot Elevations - + 30±
5. Direction Of Drainage - - - - -
6. Plat Reference - Plat Book 21, Folio 70
7. Parking Provided - 2 Spaces / Unit
8. PAVING SPECIFICATIONS:  
5" 8:1 Conc Base Article C-31 or C-33  
1 1/2" 8:1 Conc Surface Article C-31
9. \* Indicates No Chimney
10. Total Area of Lots Shown on this Plan 142,301±
11. For Boundary Information see Plat Recorded in Plat Book 21, Folio 67 Dated April 26, 1971.

HOWARD RESEARCH & DEVELOPMENT CORP.  
LIBER 463      FOLIO 126

APPROVED: Howard County Office of Planning & Zoning  
*Thomas A. Harriott* 4-17-73  
Planning Director Date  
*V. S. Giovanni* 4-17-73  
Chief Planner, Division of Land Development Date

APPROVED: For Public Water and Public Sewerage Systems, Howard County Health Department.  
*C. P. Pagan* MD 4-16-73  
County Health Officer Date

APPROVED: For Public Water and Public Sewerage, Storm Drainage Systems and Public Roads Howard County Department of Public Works.  
*William A. Altom* 4/12/73  
Director Date  
*S. M. McEland* 4/12/73  
Chief Bureau of Highway Date

NOTE:

ALL DISTURBED AREAS WILL BE STABILIZED BY EITHER SOIL OR SEEDING. THE APPLICABLE SPECIFICATIONS SHALL BE THE STANDARDS AND SPECIFICATIONS FOR SOIL EROSION AND SEDIMENT CONTROL IN URBANIZING AREAS. ALL WORK PERFORMED SHALL BE IN ACCORDANCE WITH THESE SPECIFICATIONS. WHERE SEEDING IS UTILIZED THE SEED MIX WILL CONFORM TO TABLE 1 (SEMI-PERMANENT AND PERMANENT SEEDINGS AND SEEDING PATTERNS) DEPENDING UPON THE TIME OF ACTUAL SEEDING.

REVISIONS

1. Revised Location of House Lot 122 - 11-24-71 - R.S.B.
2. Changed House Type From "A" To "C" Lots 126, 129 & 131 - M.W.M. 2-4-72
3. Revised Lots 114, 117, 118, 130 & 131 - M.W.M. 10-18-72
4. Revised Lot 121 to Show Addition of Family Room 1/12/72 - M.W.M.

APPROVED  
DIVISION OF LAND AND TRANSPORTATION  
HOWARD COUNTY, MARYLAND  
DATE: 3/5/73  
1/2/81

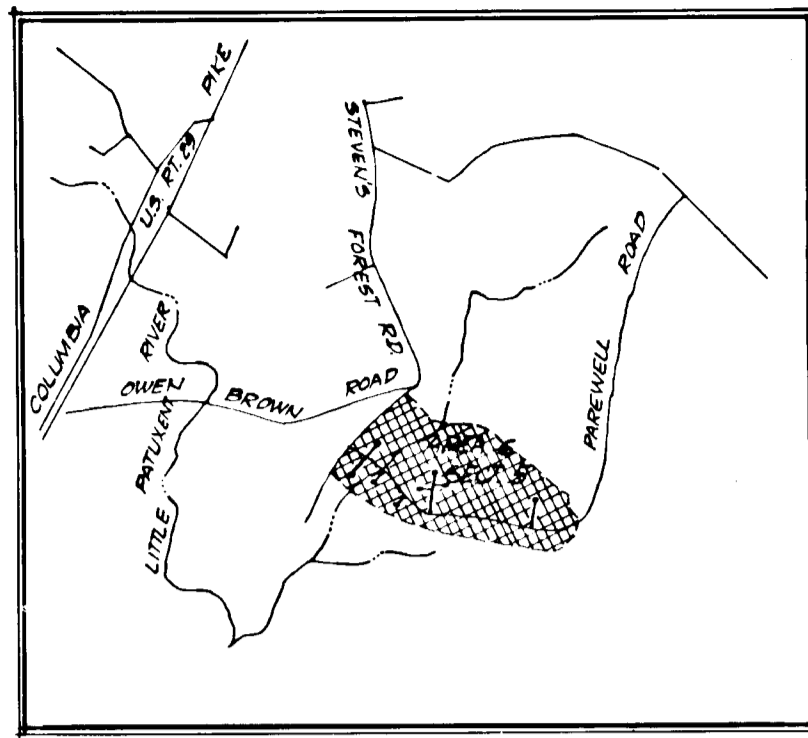
RECEIVED  
DIVISION OF LAND DEVELOPMENT  
OF HOWARD COUNTY

JOHNSON - MCCORDIC - THOMPSON  
ENGINEERS - PLANNERS - SURVEYORS  
10750 COLUMBIA PIKE - SILVER SPRING, MD.  
593-2990      20901

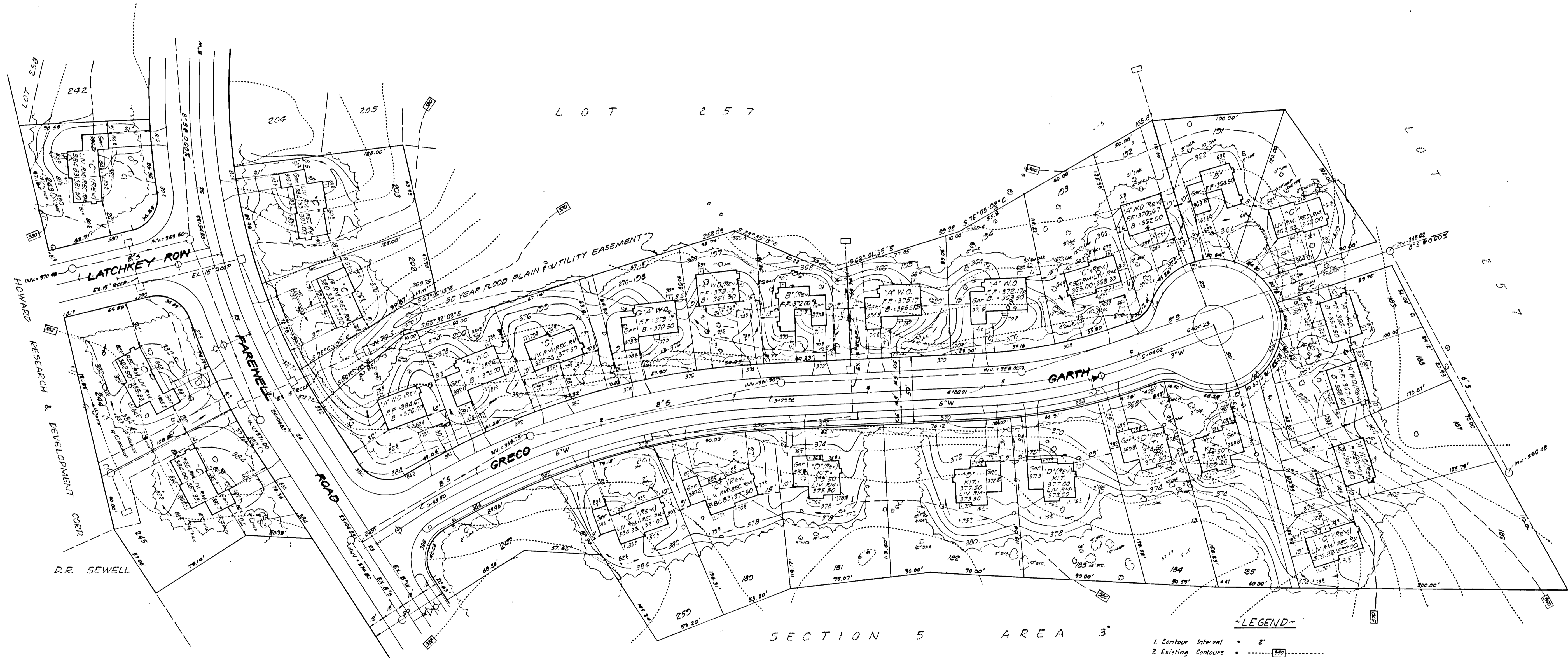
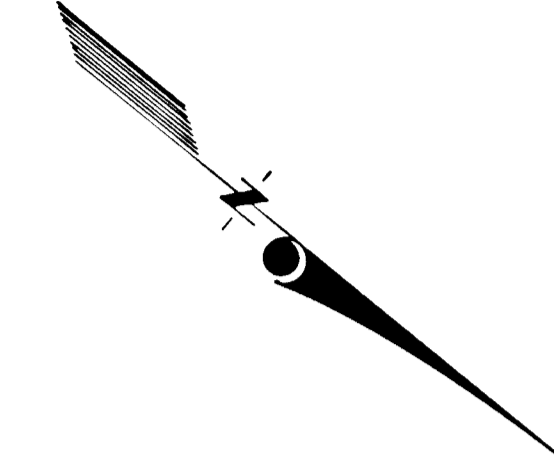
DEVELOPMENT PLAN  
LOTS 114 THRU 131  
**COLUMBIA**  
VILLAGE OF OAKLAND MILLS  
STEVEN'S FOREST  
SECTION 5 + AREA C  
6TH ELECTION DISTRICT  
HOWARD COUNTY, MARYLAND

OWNER/DEVELOPER  
AMERICAN HOUSING BUILD  
10750 COLUMBIA PIKE  
SILVER SPRING, MD 20901

DESIGN # M.W.M. SHEET 1 OF 2  
DRAWN # S.B. DATE NOV 11, 1971 10/28/71  
APPROVED SCALE 1" = 40' 4/12/73 21-3



VICINITY MAP  
SCALE: 1" = 2000'



- ~LEGEND~**
1. Contour Interval = 2'
  2. Existing Contours = [Symbol]
  3. Proposed Contours = [Symbol]
  4. Spot Elevations = + 50'
  5. Direction of Drainage = [Symbol]
  6. Plat Reference: Plat Book 21, Folio 18
  7. Parking Provided = 2 Spaces/Unit
  8. PAVING SPECIFICATIONS:  
5" Bl. Conc. Base-Article C-91 or C-93  
1 1/2" Bl. Conc. Surface-Article C-91
  9. [Symbol] Indicates Woods to be Saved
  10. \* Indicates no Chimney
  11. Total Area of Lots Shown on this Plan - 20,377 sq ft
  12. For Boundary Information See Plats Recorded in Plat Book 21 1610-67 Dated April 26, 1971.

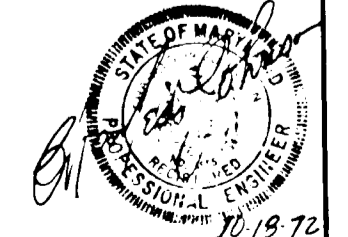
APPROVED: For Public Water and Public Sewerage Systems, Howard County Health Department  
*[Signature]* 4/16/73  
 County Health Officer

APPROVED: Howard County Office of Planning & Zoning  
*[Signature]* 4-17-73  
 Planning Director

APPROVED: For Public Water and Public Sewerage, Storm Drainage Systems and Public Roads Howard County Department of Public Works.  
*[Signature]* 4/13/73  
 Director

APPROVED  
 DIVISION OF LAND DEVELOPMENT AND TRANSPORTATION PLANNING  
 HOWARD COUNTY, MARYLAND  
 DATE: 3/5/73  
 RECEIVED  
 DIVISION OF LAND DEVELOPMENT OF HOWARD COUNTY

REVISION: Revised Plan to Show 30' x 30' Flood Plain & House on Lots 192, 181 & 123 to Hold Same's 3' Elevation (Plan 15 For Howard Co. - 3-8-73 - R.E.B.)

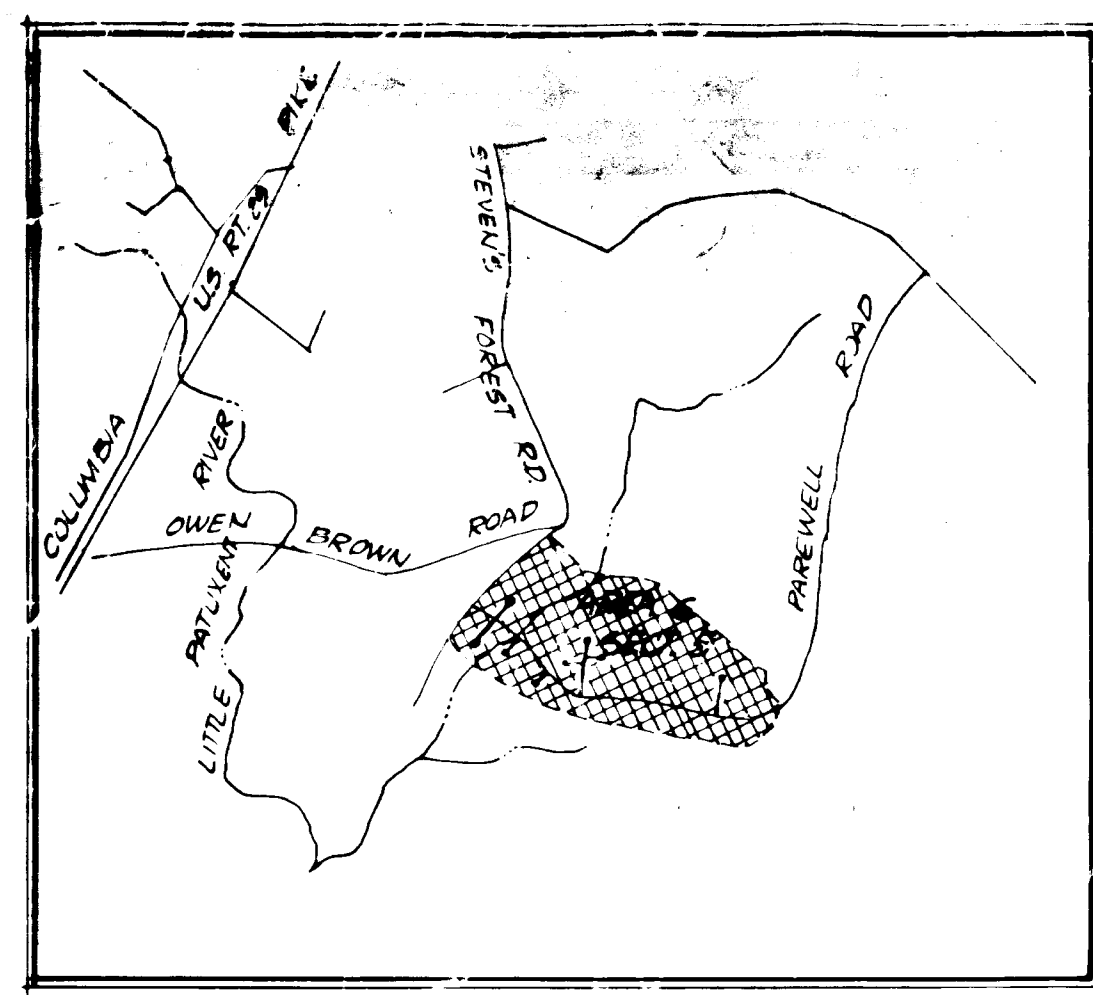


JOHNSON - MCCORDIC - THOMPSON  
 ENGINEERS • PLANNERS • SURVEYORS  
 10750 COLUMBIA PIKE • SILVER SPRING, MD.  
 593-2990 20901

DEVELOPMENT PLAN  
 LOTS 180 thru 203, 243 thru 245 & LOT 250  
**COLUMBIA**  
 VILLAGE OF OAKLAND MILLS  
 STEVEN'S FOREST  
 SECTION 5 - AREA - G  
 6th ELECTRIC DISTRICT  
 HOWARD COUNTY, MARYLAND

OWNER & DEVELOPER  
 AMERICAN HOUSING BUILD  
 10750 COLUMBIA PIKE  
 SILVER SPRING, MD. 20901

DESIGN: M/M/M SHEET 7 OF 7  
 DRAFT: DATE: JOB NO. 1-40-81  
 APPROVED: SCALE: 1" = 40' FILE NO. 2-16-81-B



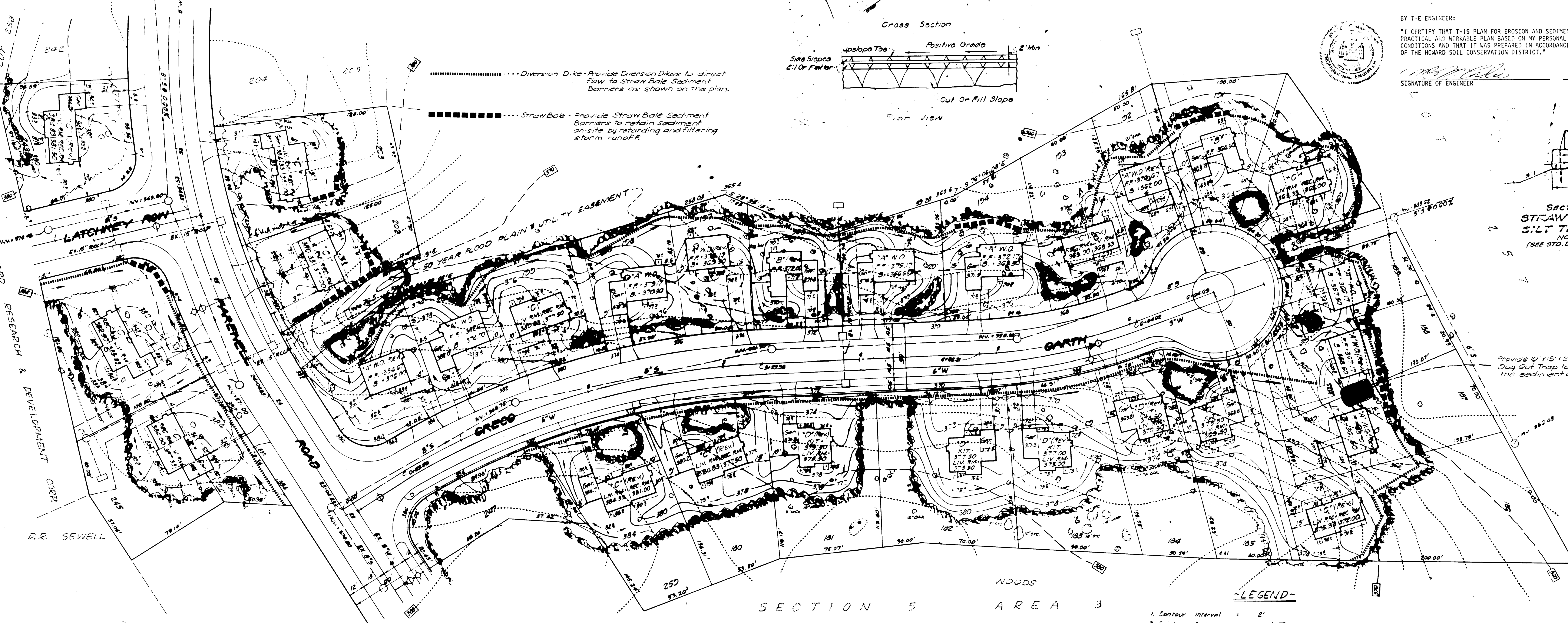
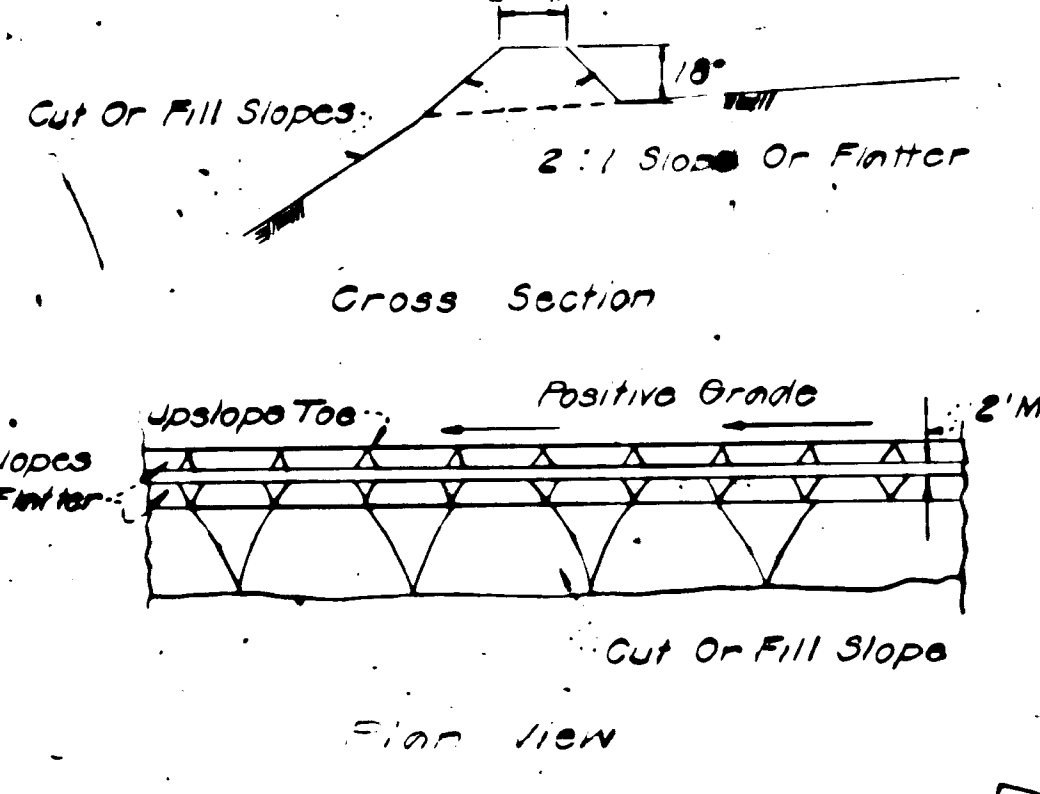
VICINITY MAP  
SCALE: 1" = 5000'

GENERAL NOTES

1. ALL REFERENCES TO STANDARDS AND SPECIFICATIONS SHALL MEAN THE STANDARDS AND SPECIFICATIONS FOR SOIL EROSION AND SEDIMENT CONTROL IN URBANIZING AREAS.
2. THE INITIAL SEDIMENTATION CONTROL FACILITIES ARE TO BE CONSTRUCTED IN CONJUNCTION WITH THE START OF THE CLEARING OPERATION.
3. CONTINUOUS INSPECTION AND MAINTENANCE TO BE PROVIDED TO INSURE EFFICIENCY OF ALL FACILITIES.
4. ALL SEDIMENTATION CONTROL FACILITIES TO REMAIN IN PLACE UNTIL PERMISSION FOR THEIR REMOVAL HAS BEEN OBTAINED FROM HOWARD COUNTY CONSERVATION SERVICE.
5. CONTRACTOR SHALL NOTIFY THE SEDIMENTATION AND EROSION CONTROL FACILITIES SHALL OBTAIN AND FOLLOW THE SPECIFICATIONS FOR SILT AND SEDIMENT CONTROL AS DISTRIBUTED BY THE HOWARD SOIL CONSERVATION DISTRICT.
6. ALL DISTURBED AREAS ARE TO BE DIRECTED TO DRAIN TO THE SEDIMENT TRAPS PROVIDED. NO DISTURBED AREAS ARE TO BE ALLOWED TO DRAIN DIRECTLY OFF THE SITE.
7. THE SEDIMENT TRAPS SHALL BE CONSTRUCTED COMPLETE WITH DIVERSION DICES, SLOPE STABILIZATION, RIP RAP AND OTHER MATERIALS AS REQUIRED IN ACCORDANCE WITH CURRENT STANDARDS, SPECIFICATIONS AND BEST PRACTICES OF THE HOWARD SOIL CONSERVATION DISTRICT PRIOR TO ANY SITE OR AREA GRADE OPERATION AND THE BASINS SHALL REMAIN IN PLACE UNTIL ALL STABILIZATION IS COMPLETE.
8. CONSTRUCTED TRAPS, DICES, TRAPS, ETC. WILL BE COMPACTED BY SEVERAL PASSES WITH THE CONSTRUCTION EQUIPMENT (E.G. LOGS, COMPACTOR OR OTHER HEAVY EQUIPMENT, OR BY USE OF A SOOTHING ROLLER).
9. THE PROJECT SHALL PROVIDE SAFETY SIGNS FOR THE TRAPS, SUGGESTED PLATE IS 48" (4'0") HIGH, HIGHWAY TYPE SIGN (SEE HOWARD COUNTY SIGNAGE SPECIFICATION).
10. ALL SEDIMENT CONTROL FACILITIES TO BE ADJUSTED AS NECESSARY TO MEET EXISTING FIELD CONDITIONS.
11. THE INITIAL OPERATIONS WILL BE LIMITED TO THOSE AREAS WHICH WILL BE USED FOR THE SEDIMENT CONTROL FACILITIES.
12. THE CONTRACTOR SHALL BE RESPONSIBLE FOR ASSURING THAT THE SEDIMENT CONTROL MEASURES ARE FUNCTIONAL ON A CONTINUOUS BASIS.
13. TREE PROTECTION MEASURES DURING SITE GRADING:
  - A. ALL TREE PROTECTION MEASURES SHALL BE CAUTIONED TO AVOID DAMAGE TO EXISTING TREES (SO NOTED ON THIS PLAN). TREE PROTECTION MEASURES SHALL NOT BE CUT TO AT AREA EQUAL TO TWICE THE TREE CIRCUMFERENCE (CIRCUMFERENCE OF 10" SHOULD BE A MINIMUM OF 20" IN ALL DIRECTIONS FROM THE TREE).
  - B. TREE PROTECTION MEASURES SHALL BE PAINTED IN RED WITH A GOOD GRADE OF "TREE PAINT".
14. ALL FILL MATERIAL USED ON THIS SITE SHALL BE FREE OF DECOMPOSIBLE MATERIAL.

SEEDING NOTES

1. ALL DISTURBED AREAS STEEPER THAN OR EQUAL TO 3:1 SHALL BE TEMPORARILY STABILIZED WITH PROTECTIVE MULCH IMMEDIATELY UPON COMPLETION OF ROUGH GRADING IN ACCORDANCE WITH THE FOLLOWING PROCEDURE:
  - A. USE 1-1/2 TO 2 TONS OF CLEAN, UNWEATHERED SMALL GRAIN STRAW PER ACRE (WHEAT PREFERRED).
  - B. ANCHOR MULCH WITH ASPHALT, PEG AND TRINE, PLASTIC NETS OR BY A MULCH ANCHORING TOOL.
2. ALL AREAS DISTURBED ON SITE GRADING THAT WILL NOT BE CONSTRUCTED UPON WITHIN 6 MONTHS ARE TO BE STABILIZED WITH A TEMPORARY SEEDING AND MULCHING IN ACCORDANCE WITH THE FOLLOWING PROCEDURE:
  - A. MULCH TO BE APPLIED AT THE RATE OF 45 LBS. PER 1000 SQ. FT.
  - B. FERTILIZER SHALL BE 10-10-10 APPLIED AT THE RATE OF FROM 11.5 TO 18.4 LBS. PER 1000 SQ. FT.
  - C. SEED SHALL BE SPRING OATS APPLIED AT THE RATE OF 2-1/2 BU./ACRE.
  - D. MULCH MATERIALS SHOULD BE UNWEATHERED, UNCHIPPED, SMALL GRAIN STRAW (PREFERABLY WHEAT) AT THE RATE OF 1-1/2 TO 2 TONS PER ACRE.
3. ALL AREAS DISTURBED BY ON-SITE GRADING THAT WILL NOT BE CONSTRUCTED UPON WITHIN 12 MONTHS ARE TO BE STABILIZED WITH A SEED-PERMANENT TYPE SEEDING AND MULCHING IN ACCORDANCE WITH THE FOLLOWING PROCEDURE:
  - A. LIME IS TO BE APPLIED AT THE RATE OF 46 LBS. PER 1000 SQ. FT.
  - B. SEED-PERMANENT SHALL BE APPLIED AT THE RATE OF FROM 11.5 TO 23 LBS. PER 1000 SQ. FT.
  - C. FERTILIZER SHALL BE 10-10-10 APPLIED AT THE RATE OF 23 LBS. PER 1000 SQ. FT.
  - D. SEED SHALL BE ANY 31 TALL CORN APPLIED AT THE RATE OF 60 LBS./ACRE.
  - E. IMMEDIATELY AFTER SEEDING, UNWEATHERED MULCH SHALL BE SPREAD WITH UNWEATHERED SMALL GRAIN STRAW (PREFERABLY WHEAT) AT THE RATE OF 1-1/2 TO 2 TONS PER ACRE.
4. ALL AREAS DISTURBED BY ON-SITE GRADING UPON PERMANENT SEED-PERMANENT SEEDS (AFTER OCTOBER 15) OR TEMPORARY SEEDS (AFTER NOVEMBER 15) GRASSY BE MADE, WILL BE OPERATED BY PLANNING IN ACCORDANCE WITH THE FOLLOWING PROCEDURE:
  - A. MULCH MATERIALS SHOULD BE UNWEATHERED, UNCHIPPED, SMALL GRAIN STRAW, SPREAD AT THE RATE OF 1-1/2 TO 2 TONS PER ACRE.
  - B. ANCHOR MULCH WITH ASPHALT, PEG AND TRINE, PLASTIC NETTINGS, OR BY A MULCH ANCHORING TOOL.
5. ALL DISTURBED AREAS TO BE STABILIZED BY SOODS WILL BE PREPARED IN ACCORDANCE WITH THE FOLLOWING PROCEDURE:
  - A. FERTILIZER MATERIALS WHICH SUPPLY 2-1/2 LB. ACTUAL N PER 1000 SQ. FT., 2-1/2 LBS. ACTUAL P205 PER 1000 SQ. FT. AND 2-1/2 LBS. ACTUAL K<sub>2</sub>O PER 1000 SQ. FT. CAN BE APPLIED.
  - B. LIME SHALL BE APPLIED AT THE RATE OF 50 LBS. PER 1000 SQ. FT. AND DISTRIBUTED UNIFORMLY OVER THE ENTIRE AREA TO BE SOODED.
  - C. SEED SHALL BE APPLIED IN ACCORDANCE WITH THE STANDARDS AND SPECIFICATIONS FOR CRITICAL AREA SOODS AS SET FORTH IN SECTION 3.100 OF THE STANDARDS AND SPECIFICATIONS FOR SOIL EROSION AND SEDIMENT CONTROL IN URBANIZING AREAS.



Reviewed For Howard S.C.D.  
and Meets Technical Requirements.  
John P. Miller 11/13/73  
Signature Date  
U.S. SOIL CONSERVATION DISTRICT

This Development Plan is approved for  
Soil Erosion and Sediment Control by the  
Howard Soil Conservation District

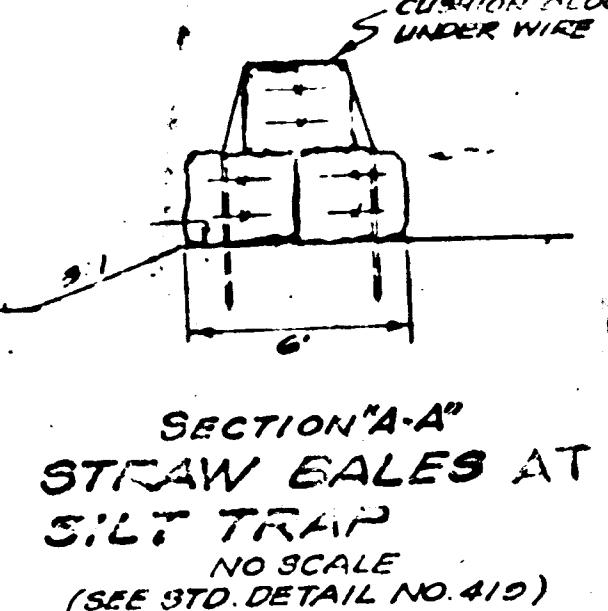
Approved: Howard S.C.D. Date: 11/13/73

BY THE DEVELOPER:  
"I CERTIFY THAT ALL DEVELOPMENT AND/OR CONSTRUCTION WILL BE DONE IN ACCORDANCE WITH THIS PLAN OF DEVELOPMENT AND PLAN FOR EROSION AND SEDIMENT CONTROL", AND I ALSO AUTHORIZE PERIODIC ON-SITE INSPECTION BY THE HOWARD SOIL CONSERVATION DISTRICT OR THEIR AUTHORIZED AGENTS, AS ARE HELD ACCESSIBLE."

John P. Miller 11/13/73  
Signature of Developer Date

BY THE ENGINEER:  
"I CERTIFY THAT THIS PLAN FOR EROSION AND SEDIMENT CONTROL REPRESENTS A PRACTICAL AND WORKABLE PLAN BASED ON MY PERSONAL KNOWLEDGE OF THE SITE CONDITIONS AND THAT IT WAS PREPARED IN ACCORDANCE WITH THE REQUIREMENTS OF THE HOWARD SOIL CONSERVATION DISTRICT."

John P. Miller 11/13/73  
Signature of Engineer Date



REVISION: Revised Houses on Lots 98, 97 & 99 no Per Howard County. 2-8-73 - J.S.B.

- 1. Contour Interval = 2'
- 2. Existing Contours = [Dotted Line]
- 3. Proposed Contours = [Solid Line]
- 4. Spot Elevations = + 50'
- 5. Direction of Drainage = [Arrow]
- 6. Plat Reference: Plat Book 21, Folio 68
- 7. Parking Provided = 2 Spaces/Unit.
- 8. PAVING SPECIFICATIONS:
  - 5" Bit. Conc. Base - Article C-31 or C-33
  - 1 1/2" Bit. Conc. Surface - Article C-31
- 9. [Symbol] Indicates Woods to be Saved
- 10. # Indicates no Chimney
- 11. Total Area of Lots Shown on this Plan - 20,977 sq.
- 12. For Boundary Information - See Plats Recorded in Plat Book 21, Folio 67 Dated April 26, 1971.

APPROVED: For Public Water and Public Sewerage Systems, Howard County Health Department  
John P. Miller 11/13/73  
County Health Officer Date

APPROVED: Howard County Office of Planning & Zoning  
John P. Miller 11/13/73  
Planning Director Date  
Chief Engineer, Division of Land Development Date

APPROVED: For Public Water and Public Sewerage, Storm Drainage Systems and Public Roads Howard County Department of Public Works.  
John P. Miller 11/13/73  
Director Date  
Chief Bureau of Highways Date



JOHNSON - MCGORDIC - THOMPSON  
ENGINEERS - PLANNERS - SURVEYORS  
10750 COLUMBIA PIKE - SILVER SPRING, MD.  
582-2990 20901

SEDIMENT CONTROL PLAN  
LOTS 180 thru 243 and 245 & LOT 250  
**COLUMBIA**  
VILLAGE OF OAKLAND MILLS  
STEVEN'S FOREST  
SECTION 5 - AREA B  
6TH SECTION DISTRICT  
HOWARD COUNTY, MARYLAND

OWNER / DEVELOPER	DATE
B/S	11/13/73
TBA	
...	

SDA 73-73

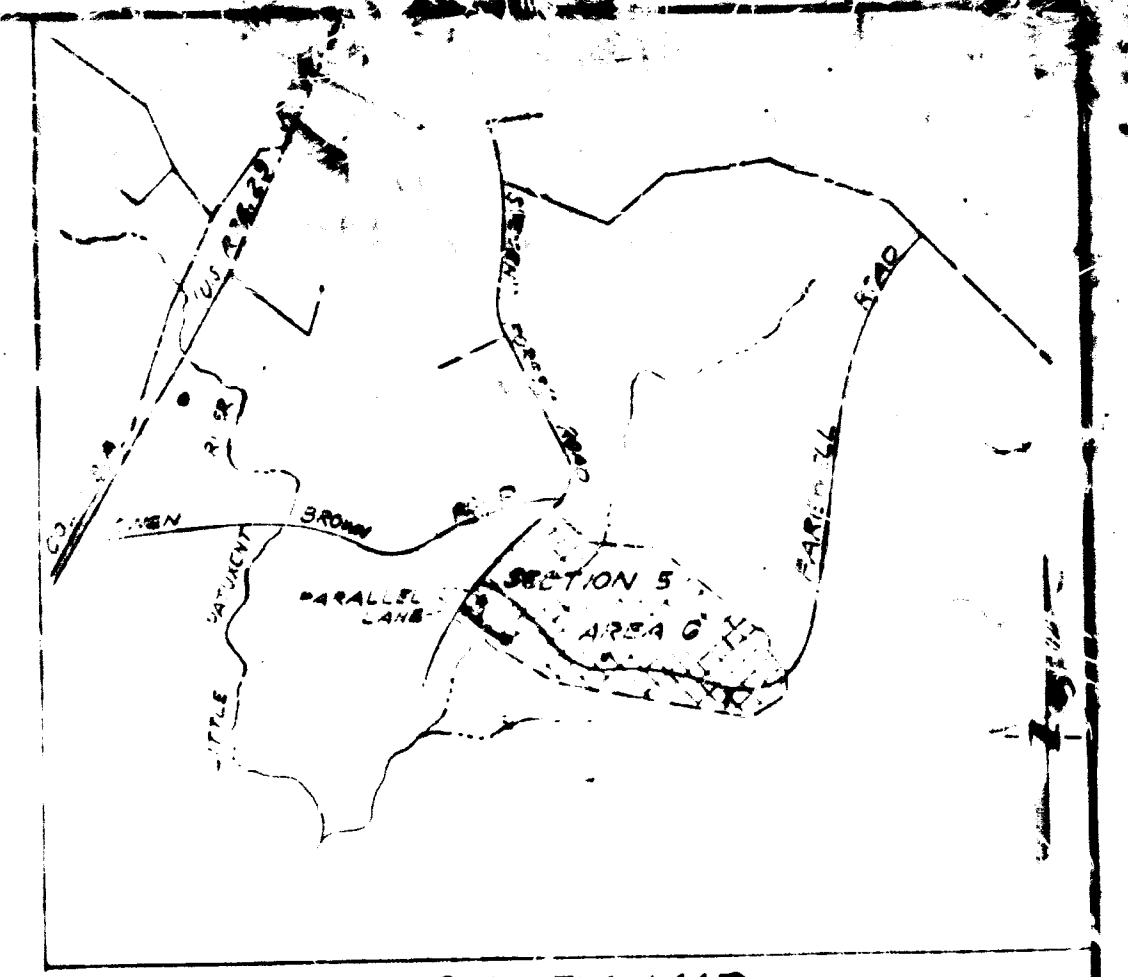
Reviewed for  
and Meets Technical Requirements  
*[Signature]*  
Signature  
S. SOIL CONSERVATION DISTRICT

This Development Plan is approved for  
Soil Erosion and Sediment Control by the  
Howard Soil Conservation District

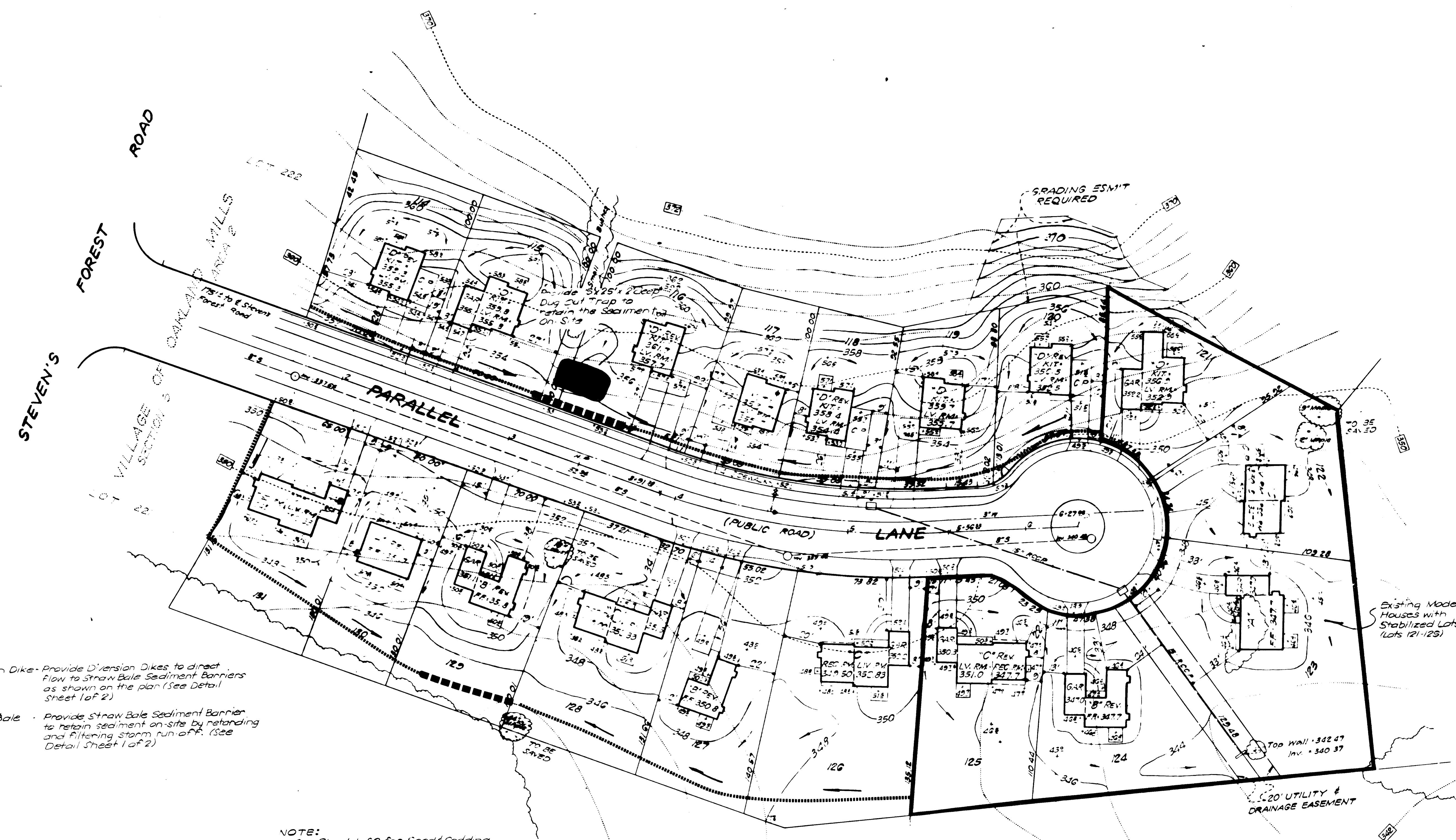
Approved  
Howard S.C.D.

BY THE BOARD OF SUPERVISORS:  
I HEREBY CERTIFY THAT ALL DEVELOPMENT AND/OR CONSTRUCTION HEREON SHALL BE DONE  
ACCORDING TO THIS PLAN OF DEVELOPMENT AND PLAN FOR EROSION AND  
SEDIMENT CONTROL, AND I ALSO AUTHORIZE CHARGES OF SAID  
DISTRICT TO THE BOARD OF SUPERVISORS TO ENFORCE THE PROVISIONS  
HEREON AS ARE SOLELY REQUIRED.

BY THE ENGINEER:  
I HEREBY CERTIFY THAT THIS PLAN FOR EROSION AND SEDIMENT CONTROL, SUPERVISION  
AND MAINTENANCE OF THE SAME, IS IN ACCORDANCE WITH THE REQUIREMENTS  
OF THE HOWARD SOIL CONSERVATION DISTRICT.

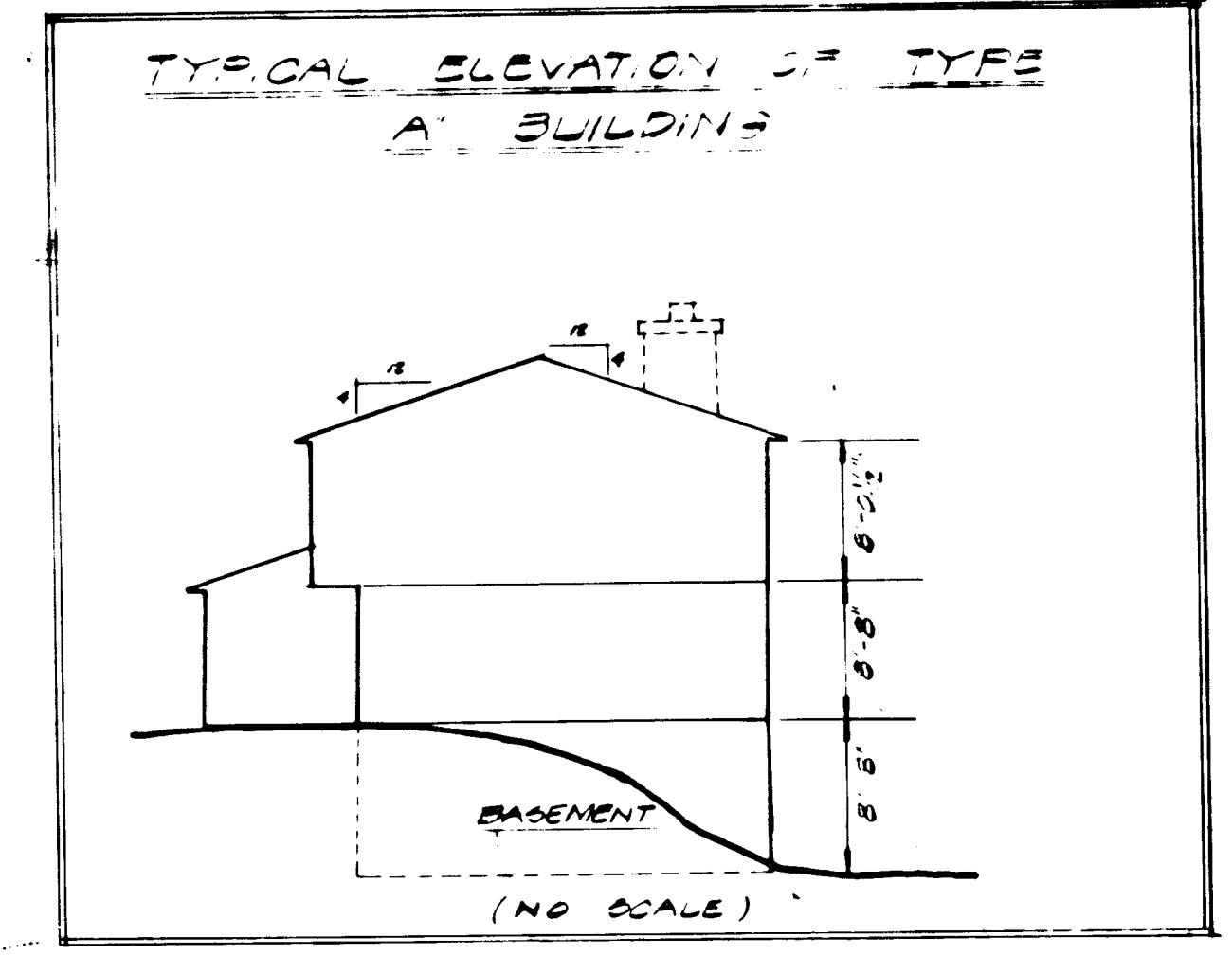


VICINITY MAP  
SCALE 1" = 1000'



..... Diversion Dike - Provide Diversion Dikes to direct  
Flow to Straw Bale Sediment Barriers  
as shown on the plan (See Detail  
Sheet 1 of 2)

----- Straw Bale - Provide Straw Bale Sediment Barrier  
to retain sediment on-site by retarding  
and filtering storm run-off. (See  
Detail Sheet 1 of 2)



- LEGEND**
- Contour Interval = 2'
  - Existing Contours = [Symbol]
  - Proposed Contours = [Symbol]
  - Spot Elevations = +30.4
  - Direction Of Drainage = [Symbol]
  - Pint Reference = Pint Book 21, Folio 70
  - Parking Provided = 2 Spaces/Unit
  - PAVING SPECIFICATIONS:  
5" Bit Conc. Base Article C-31 or C-33  
1 1/2" Bit Conc. Surface Article C-31
  - \* Indicates No Chimney
  - Total Area of Lots Shown on this Plan 142,201.8
  - For Boundary Information see Plats Recorded in Pint  
Book 21, Folio 67 Dated April 26, 1971

NOTE:  
See Sheet 1 of 2 for Seed & Sodding  
Note and General Notes For  
Sediment Control Plan.

HOWARD RESEARCH & DEVELOPMENT CORP  
LIBER 463 FOLIO 156

APPROVED: Howard County Office of Planning & Zoning  
*[Signature]*  
Planning Director Date

Chief Engineer, Division of Land Development Date

APPROVED: For Public Water and Public Sewerage  
Systems, Howard County Health Department.  
*[Signature]*  
County Health Officer Date

APPROVED: For Public Water and Public Sewerage, Storm  
Drainage Systems and Public Roads, Howard County  
Department of Public Works.  
*[Signature]*  
Director Date

*[Signature]*  
Chief Bureau of Highway Date

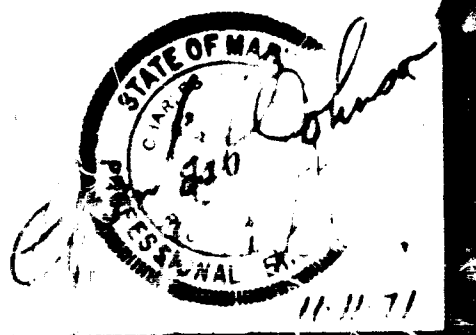
NOTE FOR LOTS 121 to 125 ONLY:  
ALL DISTURBED AREAS WILL BE STABILIZED BY  
EITHER SOD OR SEEDING. THE APPLICABLE SPECIFI-  
CATIONS SHALL BE THE STANDARDS AND SPECIFI-  
CATIONS FOR SOIL EROSION AND SEDIMENT CONTROL  
IN URBANIZING AREAS. ALL WORK PERFORMED SHALL  
BE IN ACCORDANCE WITH THESE SPECIFICATIONS.  
WHERE SEEDING IS UTILIZED THE SEED MIX WILL  
CONFORM TO TABLE 1, SEMI-PERMANENT AND PER-  
MANENT SEEDINGS AND SEEDING DATES, DEPEND-  
ING UPON THE TIME OF ACTUAL SEEDING.

- REVISIONS**
- Revised Location of House Lot 122 - 11-24-71 R.G.B.
  - Changed House Type From "A" To "C" Lots 126,  
128 & 131. M.W.M. 9-4-72
  - Revised Lots 114, 117, 118, 130 & 131. M.W.M. 10-18-72
  - Revised Lot 121 to show Addition of Family Room  
1/12/72 M.W.M.

**CONSTRUCTION SCHEDULE**  
Lots 114-120 & 126-131 (Sheet 2 of 2)  
Lots 180-209, 248-249 & 289 (Sheet 1 of 2)  
Start Clearing & Grading - April 16, 1973  
Start House Construction - April 30, 1973  
Complete Final Grading  
and Stabilization - Dec. 1, 1973

3/5/73

*[Signature]*



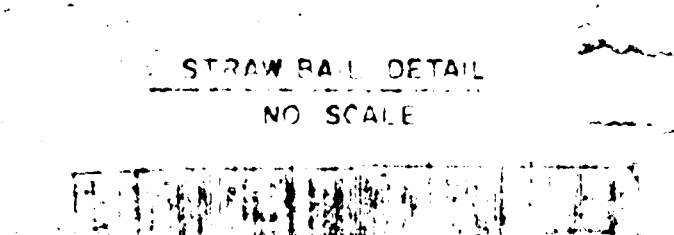
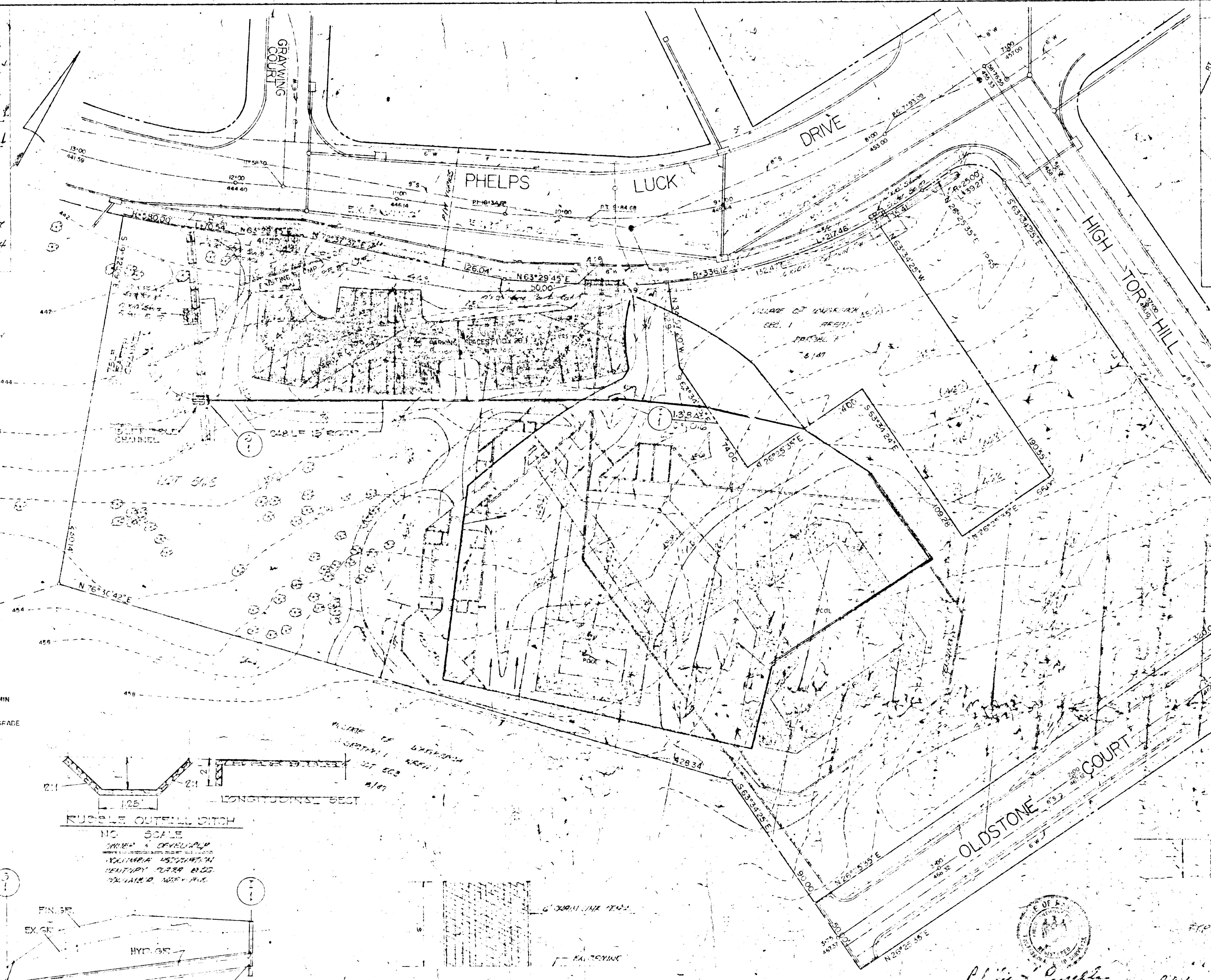
SEDIMENT CONTROL PLAN  
LOTS 114 THRU 131  
**COLUMBIA**  
VILLAGE OF OAKLAND MILLS  
STEVEN'S FOREST  
SECTION 5 + AREA - G  
8th ELECTION DISTRICT  
HOWARD COUNTY, MARYLAND

SHP 1373C

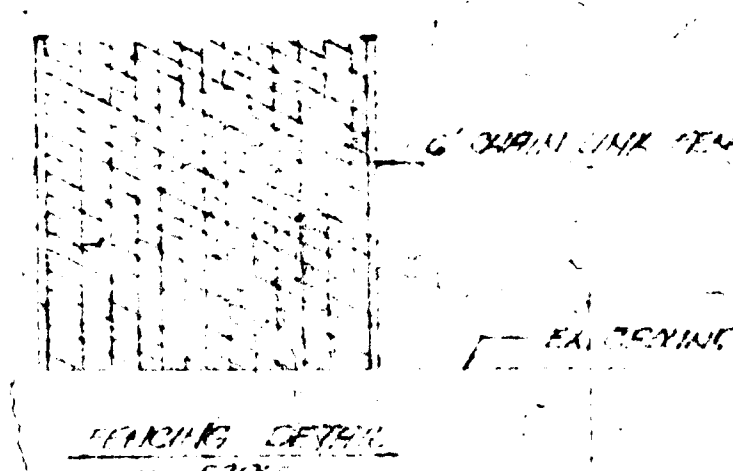
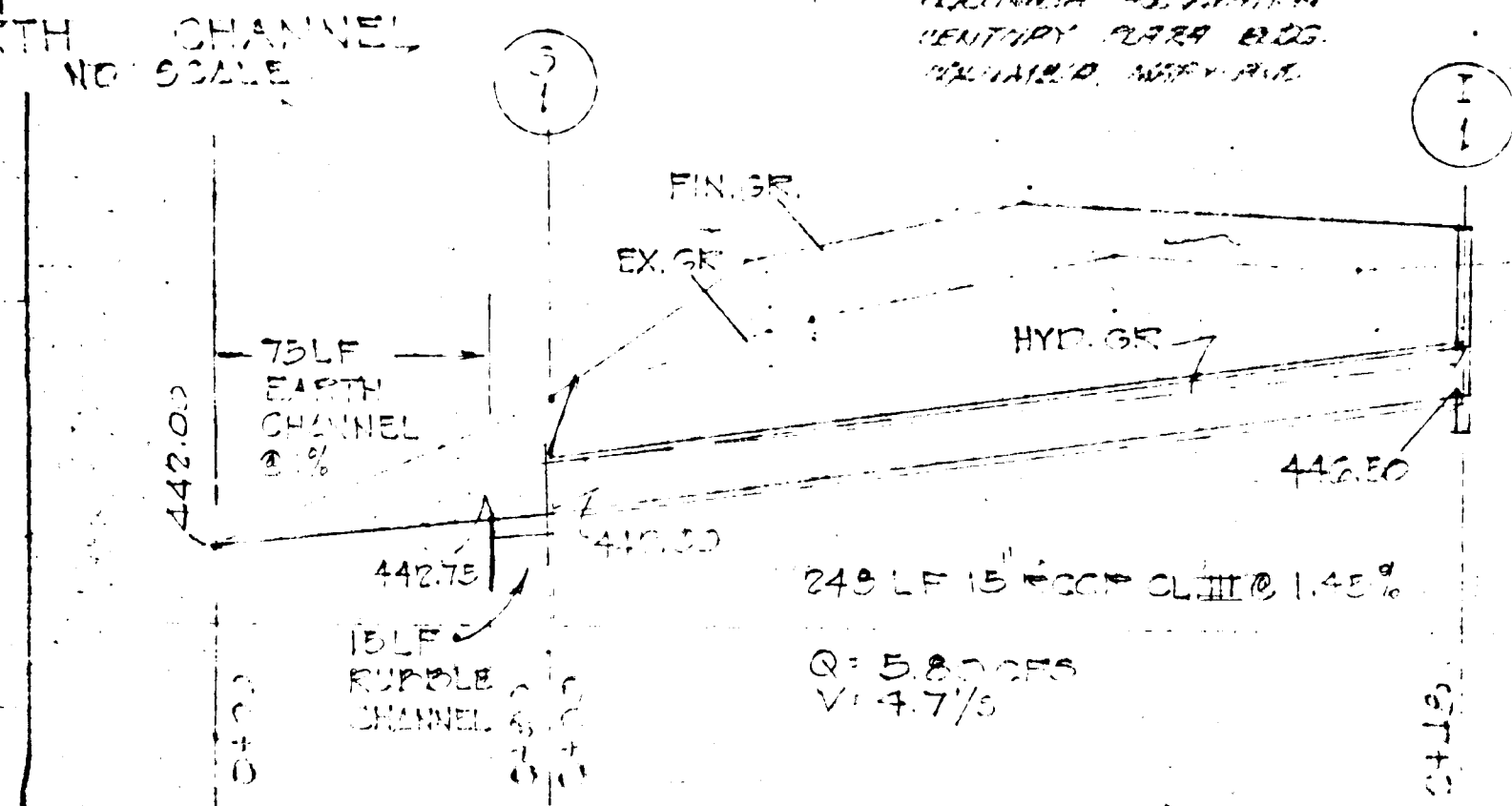
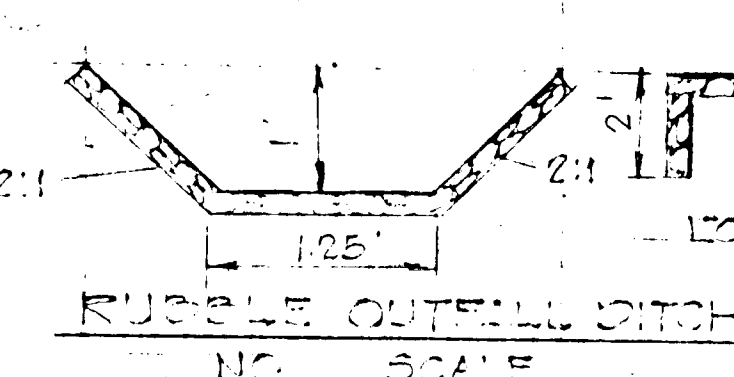
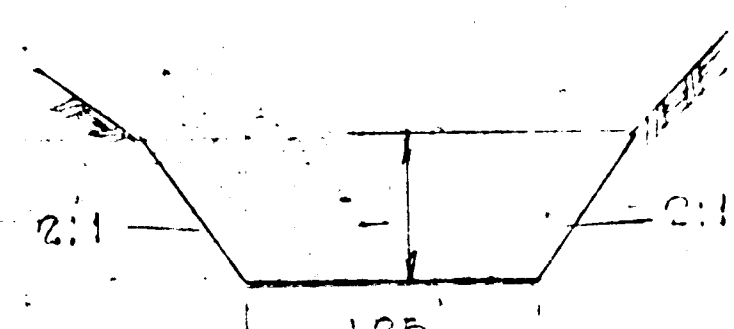
APPROVED FOR PUBLIC WATER AND PUBLIC SEWERAGE SYSTEMS  
 HOWARD COUNTY HEALTH DEPARTMENT  
*W. W. ...*  
 COUNTY HEALTH OFFICER DATE

APPROVED HOWARD COUNTY OFFICE OF PLANNING AND ZONING  
*...*  
 PLANNING DIRECTOR DATE  
*...*  
 CHIEF, DIVISION OF LAND DEVELOPMENT AND TRANSPORTATION PLANNING DATE

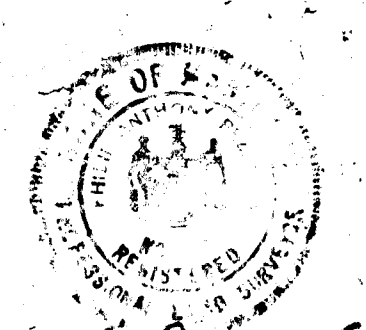
APPROVED FOR PUBLIC WATER AND PUBLIC SEWERAGE SYSTEMS  
*Will. A. ...*  
 DIRECTOR DATE  
*S. N. ...*  
 CHIEF, BUREAU OF HIGHWAYS DATE



EXISTING GRADE 3" MIN  
 NOTE: RAILS TO BE SET 3" BELOW EXISTING GRADE AND SECURED WITH 2 STAKES PER RAIL DRIVEN FLUSH



STRUCTURE SCHEDULE				
NO.	TYPE	INW. IN.	INW. OUT.	REMARKS
I-1	CLASS C INLET		443.50	SEE HO. CO. STD. SPEC. DRAWING 64-C PAGE 110-C
2-1	TYPE C ENDWALL		442.27	SEE HO. CO. STD. SPEC. DRAWING 64-C PAGE 107



*Philip J. Pagella*  
 10/14/78  
 PHILIP J. PAGELLA  
 DRAINAGE AREA

PHELPS LUCK NEIGHBORHOOD	
SITE DEVELOPMENT PLAN	
6TH ELECTION DISTRICT	
DATE: 2/16/78	SCALE: 1" = 30'