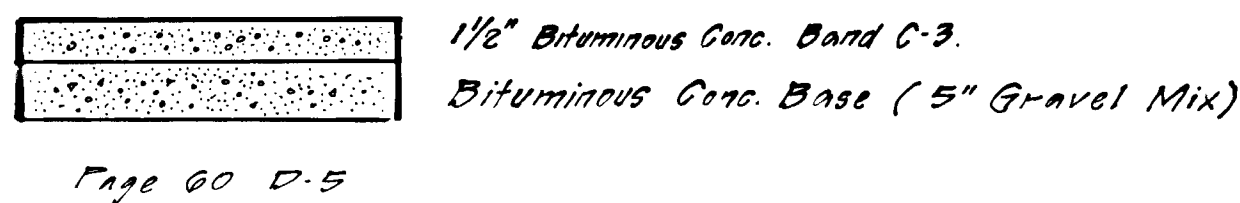


VICINITY MAP
Scale: 1" = 600'



PAVING SECTION

No Scale

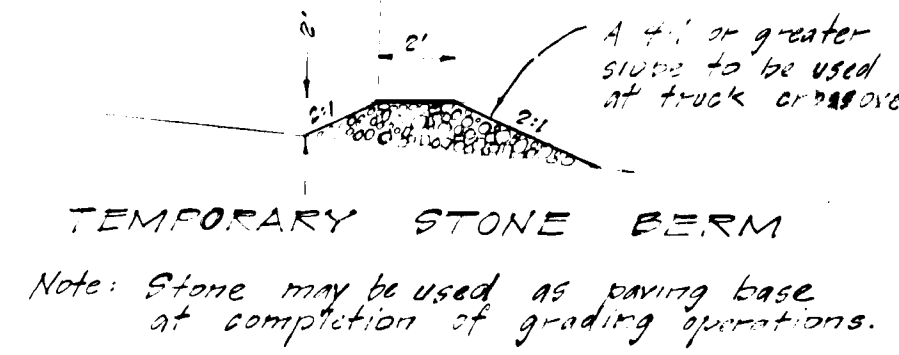
1. BASE will be primed in accordance with C-30-3 and a TACK COAT will be provided in accordance with C-31-4, see "Construction Details", page 30 & 36, Howard County Road Construction Code and Standard Specifications.

GENERAL NOTES

1. Existing Zoning M-2 District
2. Proposed Use: Warehouse
3. Coverage of Lot: No maximum required
4. Height Restrictions: 50' Maximum
5. Parking Required: 5 Spaces
6. Parking Provided: 14 Spaces
7. Total Number of Employees: 10
8. Public Water & Sewerage
9. Area of Parcel: 3.950 Acres
10. Standard Barrier Curb to be used on all Site Curbing, or Standard Concrete Curb & Gutter.

NOTE: STORM DRAINAGE PLAN submitted on plan entitled: "Storm Drainage & Paving Details, Office & Warehouse for Virginia Roofing" dated March 1972 revised Sept. 14, 1972, SDP 72-107, and approved by D.P.W.

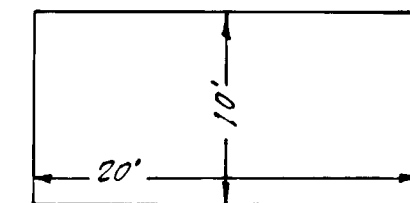
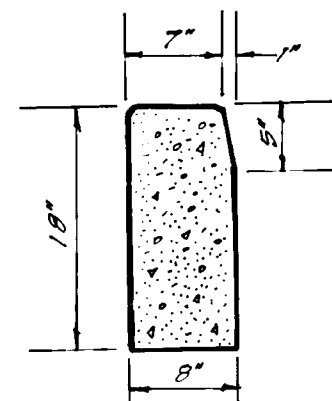
BENCH MARK: G & E Pole No 283643,
Whiskey Bottom Rd., 300' East US 1
ELEV. 222.28



LEAVE 20' x 15' x 1' deep Sediment Storage Area behind stone berms at approximate North & South Property Lines

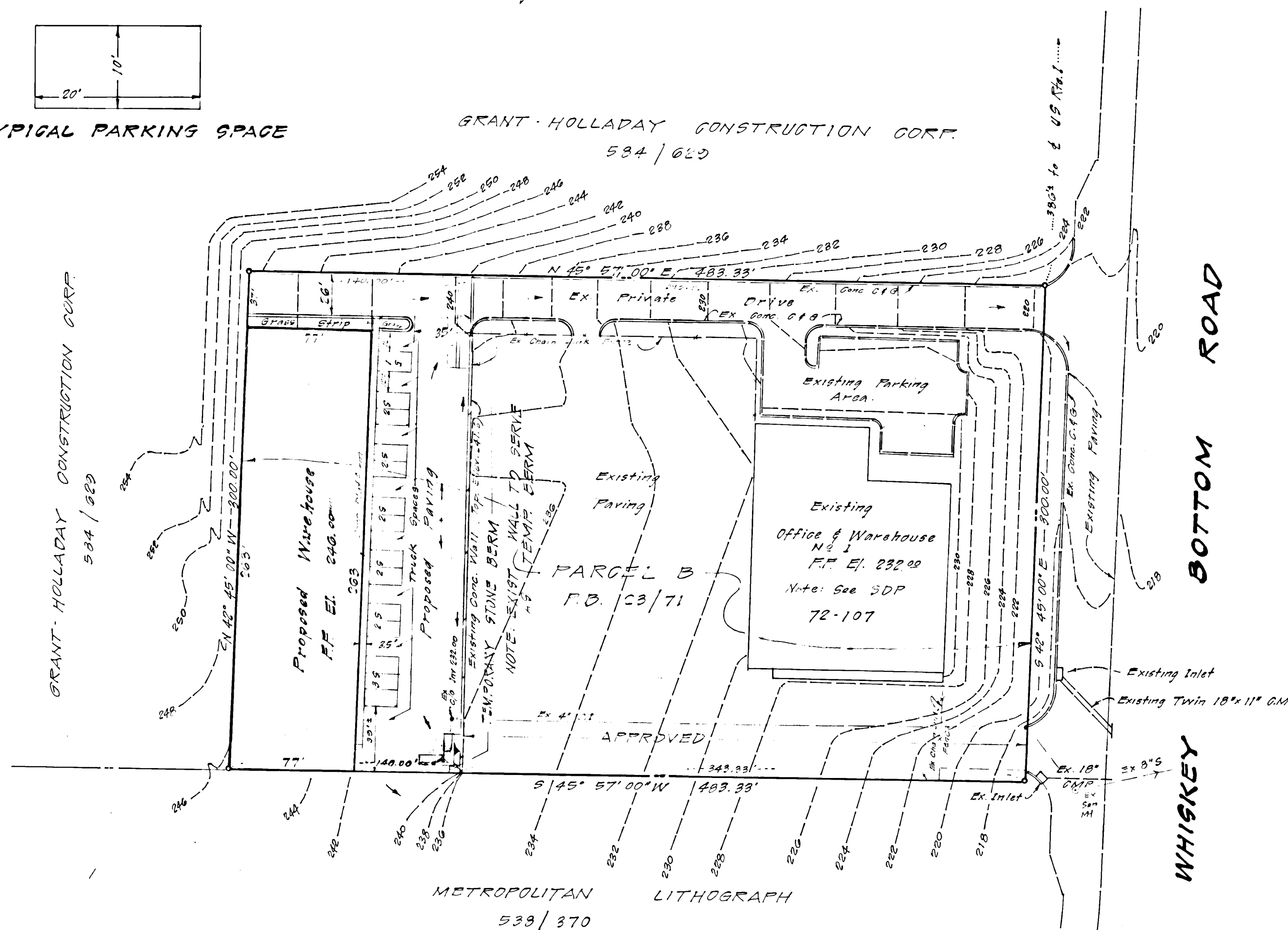
GENERAL SOILS TYPE

- Keypot silt loam - 3-10% moderately eroded
- Bethsville silt loam - 1-5% " "
- Sassafras gravelly sandy loam 1-5% " "



TYPICAL PARKING SPACE

GRANT HOLLADAY CONSTRUCTION CORP.
534 / 629



PLAN

Scale: 1" = 50'
Contour Interval: 2 Feet

APPROVED
DIVISION OF LAND DEVELOPMENT
AND TRANSPORTATION PLANNING
HOWARD COUNTY, MARYLAND
DATE 3/19/73

APPROVED FOR PUBLIC WATER AND PUBLIC SEWERAGE SYSTEMS, HOWARD COUNTY HEALTH DEPARTMENT.

John M. D... MD
COUNTY HEALTH OFFICER

3-14-73
DATE

APPROVED HOWARD COUNTY OFFICE OF PLANNING AND ZONING

Thomas G. Harris
DIRECTOR OF PLANNING

3-15-73
DATE

John G. ...
CHIEF, DIVISION OF DEVELOPMENT & TRANSPORTATION PLANNING

3-15-73
DATE

APPROVED FOR PUBLIC WATER, PUBLIC SEWERAGE AND STORM DRAINAGE SYSTEMS,

William A. ...
DIRECTOR

3-13-73
DATE

Ed O. ...
CHIEF, BUREAU OF HIGHWAYS

3-13-73
DATE

OWNER - DEVELOPER

GRANT HOLLADAY CONSTRUCTION CORP.
1720 Wisconsin Ave, N.W.
Washington, D.C. 20007
Telephone 202-338-7735

SITE DEVELOPMENT PLAN

WAREHOUSE NO. 2 VIRGINIA ROOFING

6th Election District Howard County, Md.

Scale: As shown

Dec. 1972

Sheet 1 of 1

H. MALMUD & ASSOCIATES, INC.
6815 Meadow Heights Road
Randallstown, Md. 21133
Telephone (301) 655-6405

I CERTIFY THAT ALL DEVELOPMENT AND/OR CONSTRUCTION WILL BE DONE ACCORDING TO THIS PLAN OF DEVELOPMENT AND PLAN FOR EROSION & SEDIMENT CONTROL AND I ALSO AUTHORIZE PERIODIC ON SITE INSPECTION BY THE HOWARD SOIL CONSERVATION DISTRICT OR THEIR AUTHORIZED AGENTS, AS THEY ARE DEEMED NECESSARY.

Robert Malmud
DEVELOPER

DATE

I CERTIFY THAT THIS PLAN FOR EROSION AND SEDIMENT CONTROL REPRESENTS A PRACTICAL AND WORKABLE PLAN BASED ON MY PERSONAL KNOWLEDGE OF THE SITE CONDITIONS AND THAT IT WAS PREPARED IN ACCORDANCE WITH THE REQUIREMENTS OF THE HOWARD SOIL CONSERVATION DISTRICT.

Robert Malmud

12/26/72
DATE

THIS DEVELOPMENT PLAN IS APPROVED FOR SOIL EROSION AND SEDIMENT CONTROL BY THE HOWARD SOIL CONSERVATION DISTRICT

James M. ...
DISTRICT CONSERVATIONIST

3-8-73
DATE

Robert Malmud
HOWARD SOIL CONSERV. DIST.

3-8-73
DATE

Robert Malmud
HERBERT MALMUD
Md. No 1958



REVISIONS	1/20/73	PARKING - SED. CONT.
	DATE	DESCRIPTION