

U.S. TRUCKING  
SECTION TWO BLOCK "B"  
BALTIMORE - WASHINGTON  
INDUSTRIAL PARK

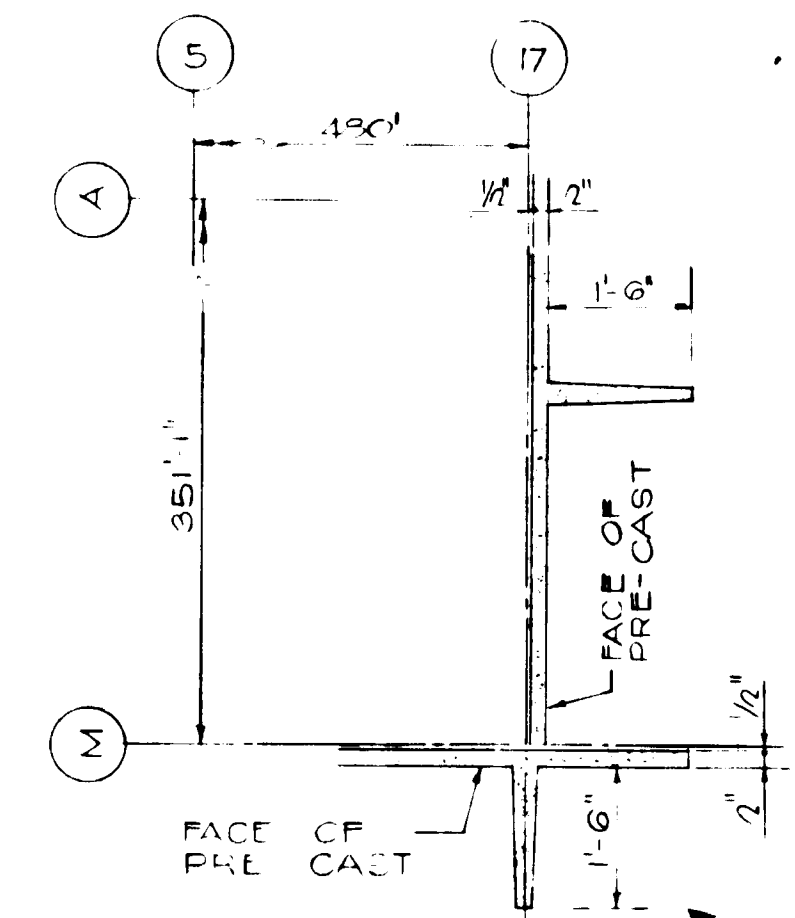
HOWARD CO. COMMERCIAL DRIVEWAY ENTRANCE DWG. D-34A

HOWARD CO. COMMERCIAL DRIVEWAY ENTRANCE DWG. D-34A

HOWARD CO. COMMERCIAL DRIVEWAY ENTRANCE DWG. D-34A

**SITE ANALYSIS**

TOTAL AREA OF TRACT	10.22 ACRES
EXISTING ZONING	M-2
TAX MAP NUMBER	
FLOOR AREA	
OFFICE	44,440 SF
MEZZANINE	16,396 SF
WAREHOUSE	154,400 SF
SALES AREA	0 SF
TOTAL	215,236 SF
TOTAL EMPLOYEES	57
PARKING (10'x20' TYPICAL = 200 SF)	
REQUIRED	44 SPACES
PROVIDED	
VISITORS	19 SPACES
EMPLOYEES	160 SPACES



APPROVED  
DIVISION OF LAND DEVELOPMENT  
AND TRANSPORTATION PLANNING  
HOWARD COUNTY, MARYLAND  
DATE 6/29/73  
WKC

APPROVED FOR PUBLIC WATER AND PUBLIC SEWERAGE SYSTEMS, HOWARD COUNTY HEALTH DEPARTMENT  
DATE 8/1/73

APPROVED HOWARD COUNTY OFFICE OF PLANNING AND TRANSPORTATION  
DATE 8/2/73

APPROVED FOR PUBLIC WATER AND PUBLIC SEWERAGE SYSTEMS, HOWARD COUNTY HEALTH DEPARTMENT  
DATE 7/25/73

**NOTE:**  
CONCRETE CURB & GUTTER SHALL BE HOWARD COUNTY STANDARD 7" COMBINATION CURB & GUTTER, PLAN D-40. NOTE: RETAIL SALES ARE NOT ALLOWED  
REVISED JAN. 30, 1996 - ADDED 10,000 GAL. UNDERGROUND TANK, DISPENSERS AND RELATED WORK.

NOV. 1, 1972  
DATE

*R. Alonso Childress*  
R. ALONSO CHILDRESS  
MD. RE. 10227

*WKC*  
7/3/73  
REG. NO. 5710

**SITE DEVELOPMENT PLAN**  
SCALE :: 1"=30'-0"

**GENERAL ELECTRIC - HOTPOINT**  
CHESAPEAKE ZONE FACILITY  
13000 WASHINGTON PARKWAY  
INDUSTRIAL PARK, ELECTION DISTRICT 6  
WASHINGTON, MARYLAND

**The Mills & Petticoat Partners**  
ARCHITECTS-ENGINEERS-PLANNERS  
WASHINGTON, D.C.

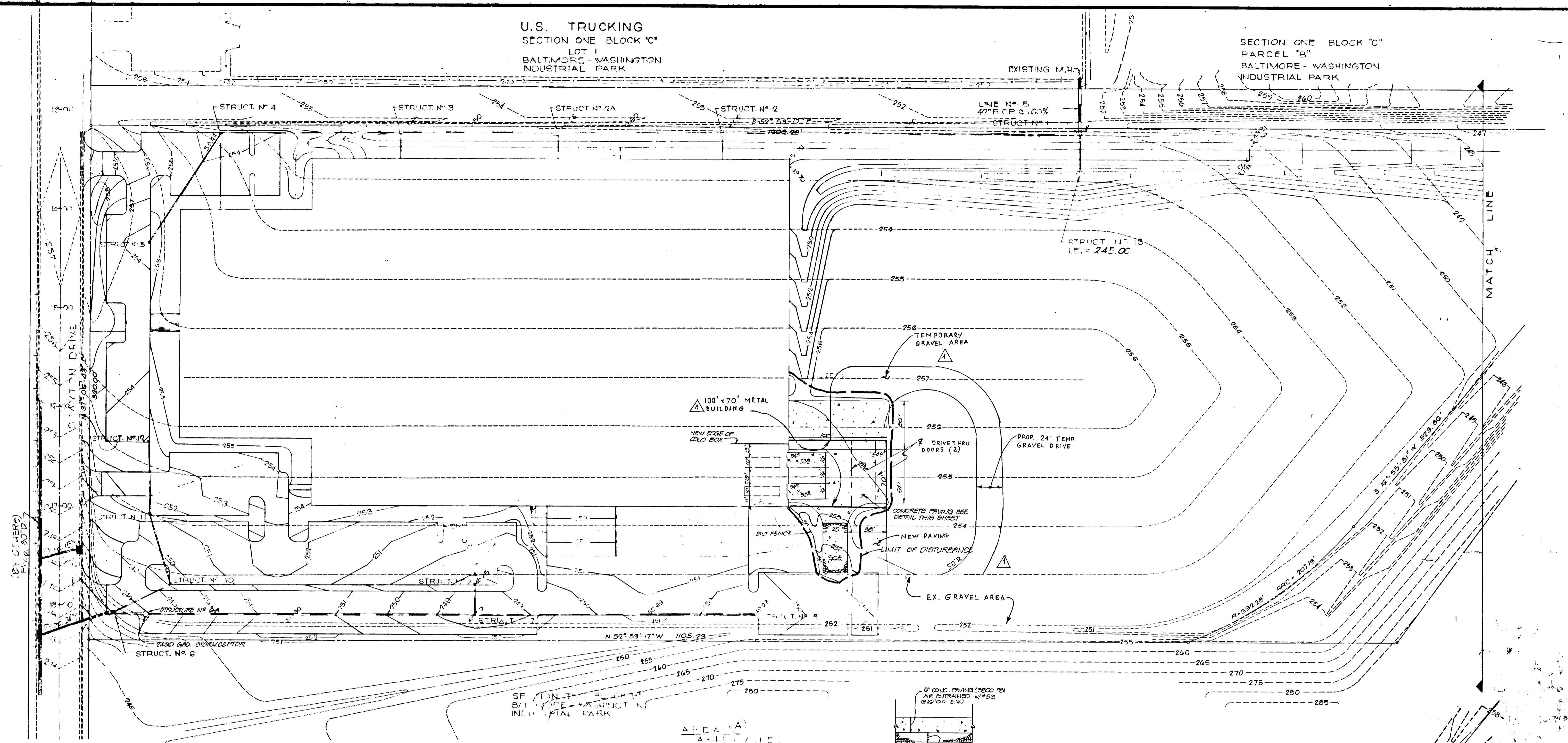
**SYSKA & HENNESSY, INC.**  
CONSULTING ENGINEERS  
WASHINGTON, D.C.

**CIVIL ENGINEERING**

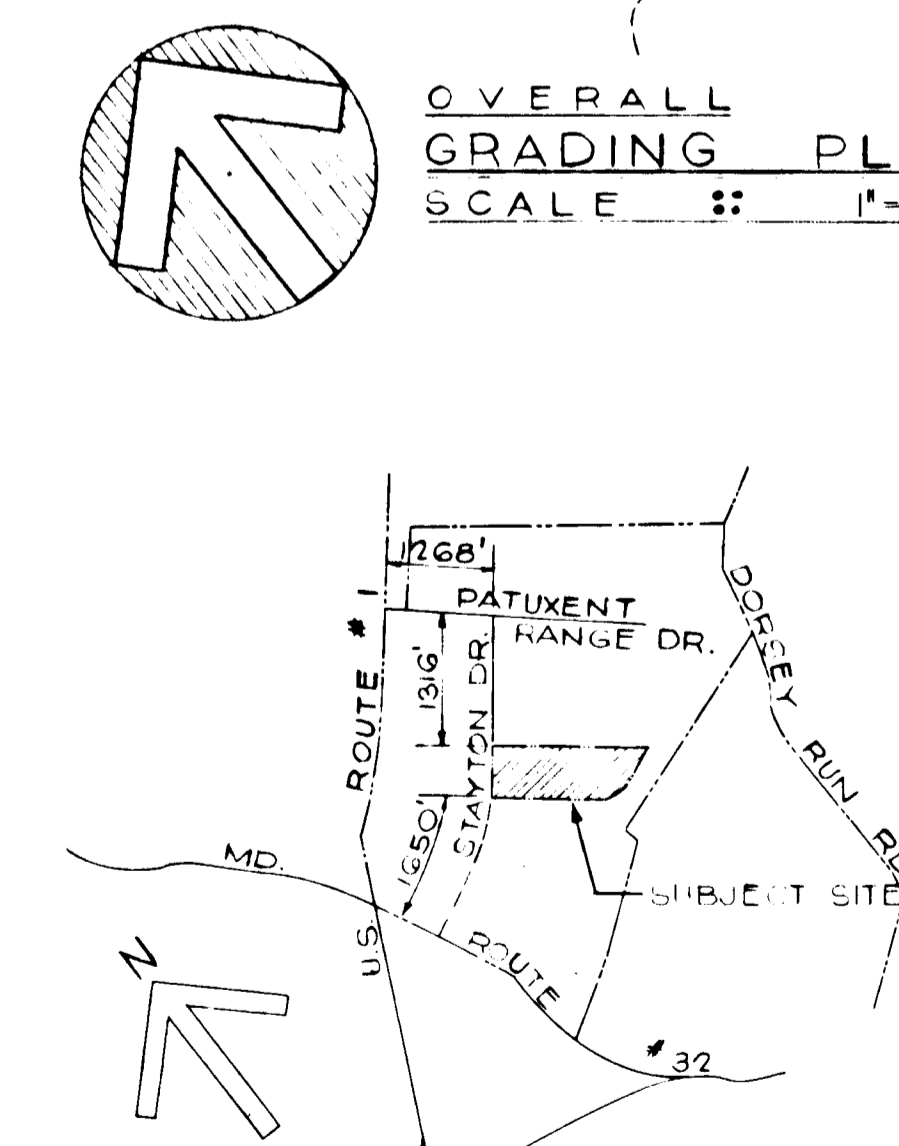
DRAWING NO. **SDP 73-60**  
SHEET NO. 7

U.S. TRUCKING  
SECTION ONE BLOCK 'C'  
LOT 1  
BALTIMORE - WASHINGTON  
INDUSTRIAL PARK

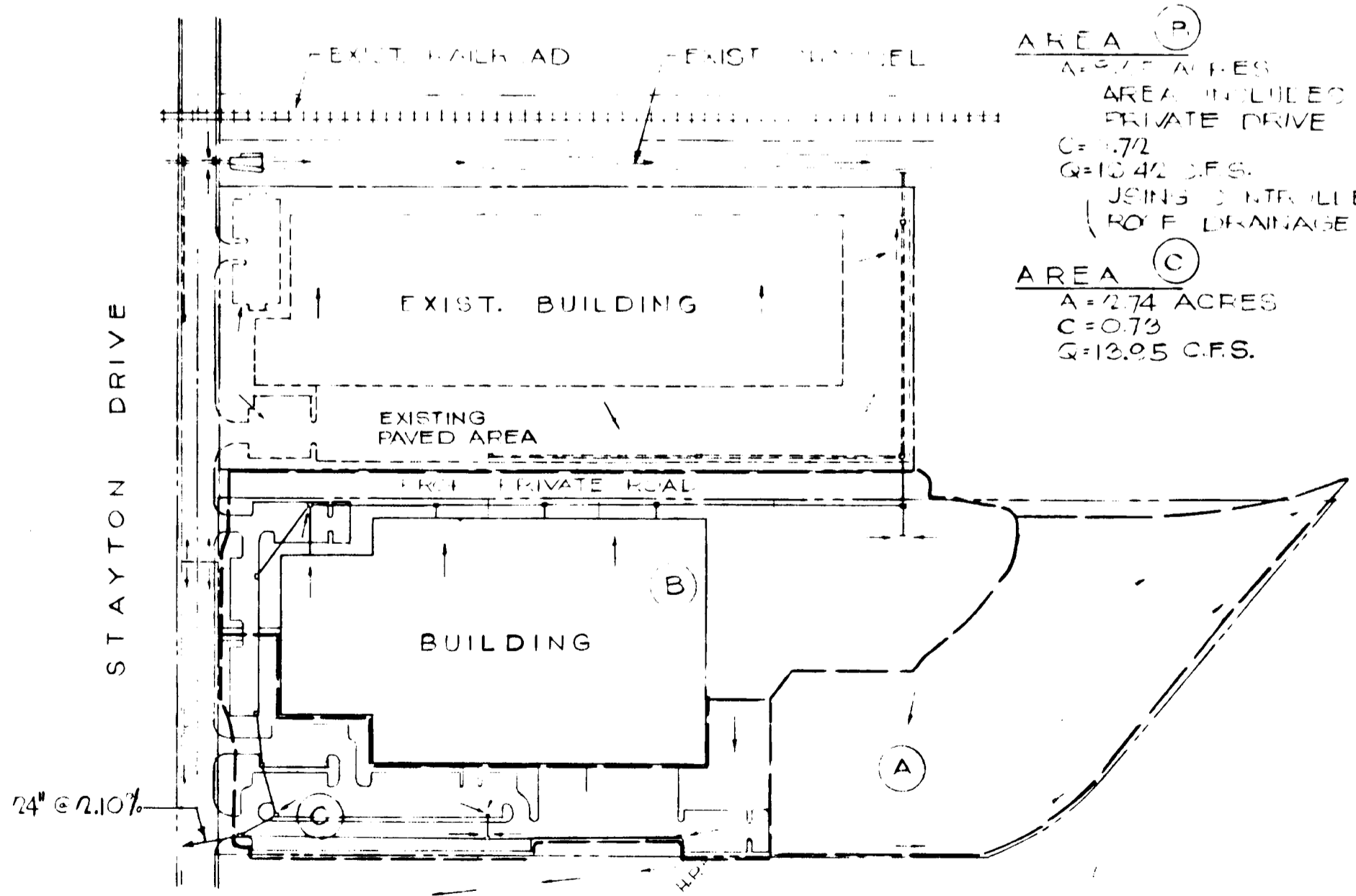
SECTION ONE BLOCK 'C'  
PARCEL 'B'  
BALTIMORE - WASHINGTON  
INDUSTRIAL PARK



OVERALL  
GRADING PLAN  
SCALE :: 1"=50'-0"

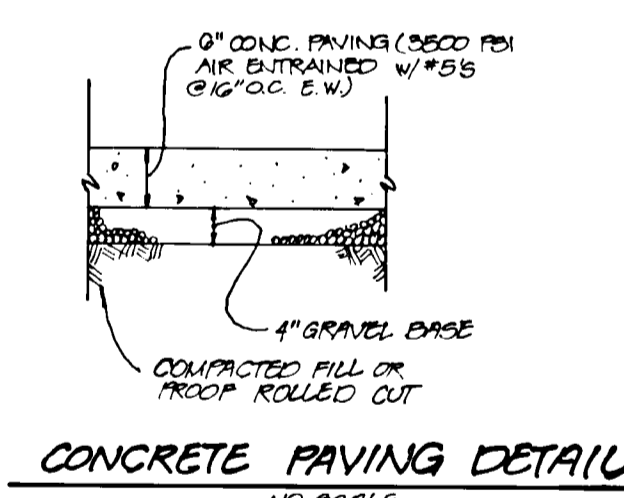


LOCATION MAP  
SCALE :: 1"=2000'



DRAINAGE AREA MAP  
SCALE :: 1"=2000'

- AREA (A)  
A=1.17 ACRES  
C=0.72  
Q=12.05 CFS.
- AREA (B)  
A=0.77 ACRES  
C=0.72  
Q=12.05 CFS.
- AREA (C)  
A=2.74 ACRES  
C=0.73  
Q=12.05 CFS.



DATE	NO.	REVISION
9/14/68	1	ADDED 100' X 70' METAL BLDG., NEW PAVING, TEMP. GRAVEL AREA/DRIVE

APPROVED FOR PUBLIC WATER AND PUBLIC SEWERAGE SYSTEMS, HOWARD COUNTY HEALTH DEPARTMENT  
DATE 7/13/73  
COUNTY HEALTH OFFICER

APPROVED HOWARD COUNTY OFFICE OF PLANNING AND ZONING  
DATE 7/13/73  
PLANNING DIRECTOR

APPROVED FOR PUBLIC WATER, PUBLIC SEWERAGE AND STORM DRAINAGE SYSTEMS AND ROADS  
HOWARD COUNTY DEPARTMENT OF PUBLIC WORKS  
DATE 7/13/73  
DIRECTOR

APPROVED  
DIVISION OF LAND DEVELOPMENT AND TRANSPORTATION PLANNING  
HOWARD COUNTY, MARYLAND  
DATE 6/29/73



7/13/73  
REG. NO. 5710

CONTINUATION OVERALL  
GRADING PLAN  
SCALE :: 1"=50'-0"

**GENERAL ELECTRIC HOTPOINT**  
C. H. E. SAUNDERS, INC. ENGINEERS  
BALTIMORE - WASHINGTON INDUSTRIAL PARK SECTION DISTRICT

**The Mills & Patticoard Partnership**  
PLANNERS

**SYSKA & HENNESSY**  
REGISTERED PROFESSIONAL ENGINEERS

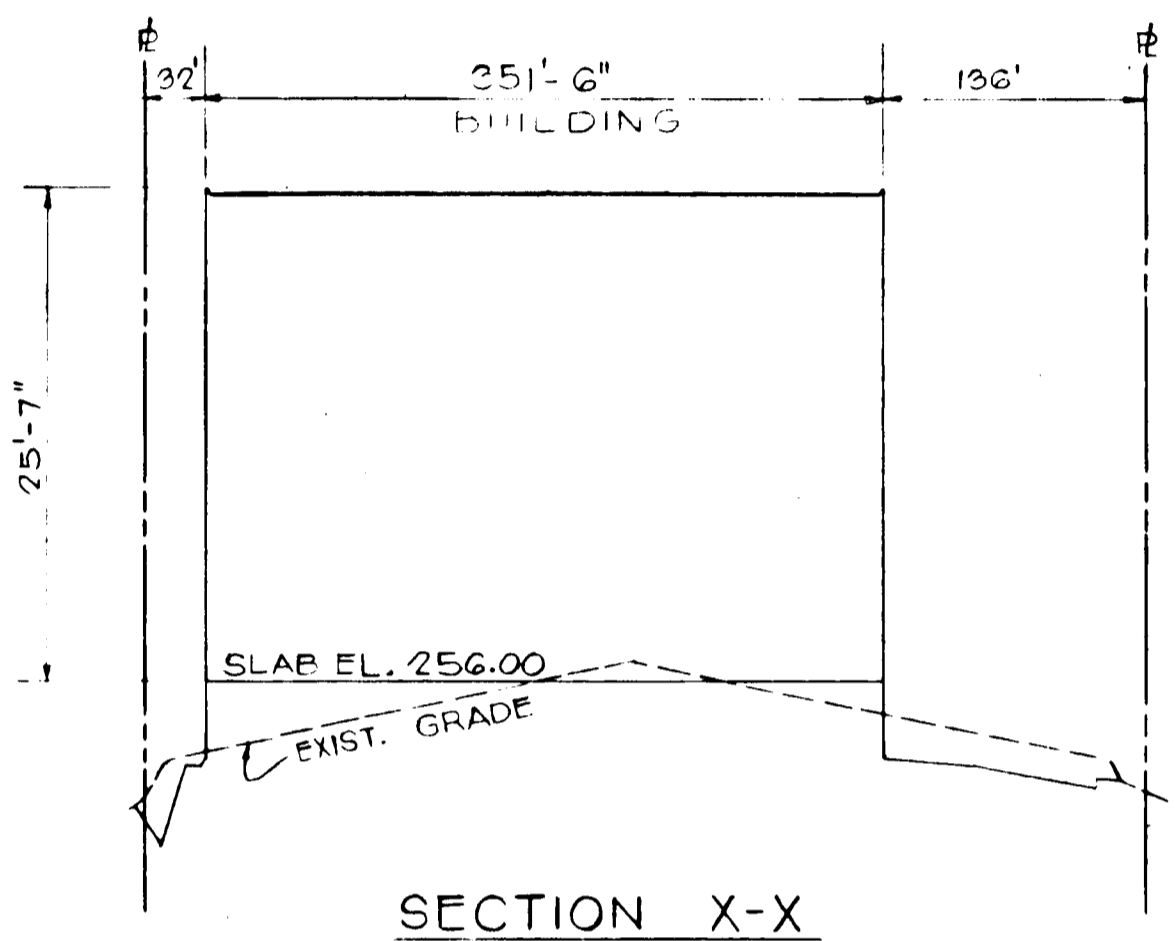
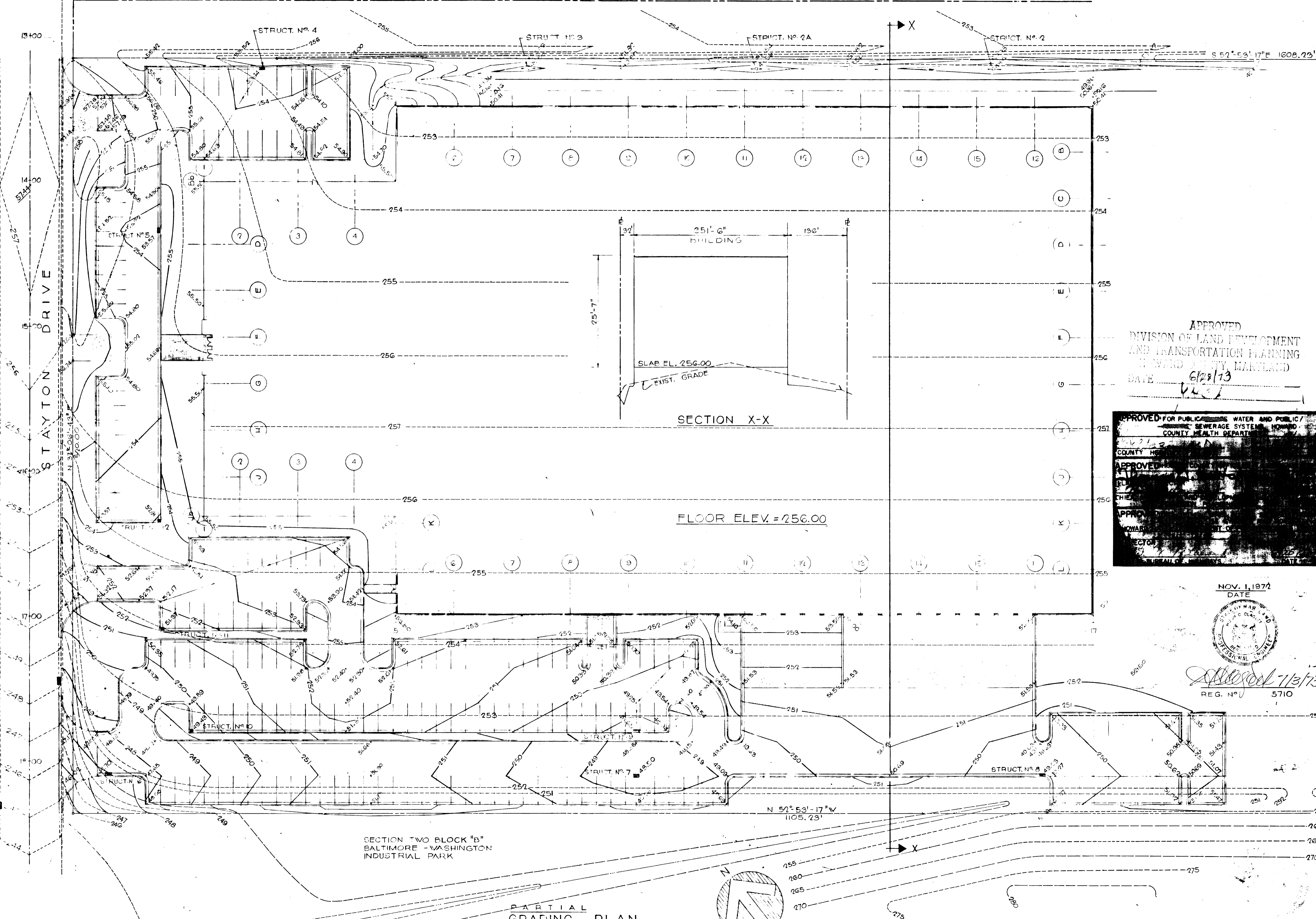
RECO PROJECT NO. 7185

CIVIL  
OVERALL GRADING PLAN

APPROVED BY: [Signature]  
DRAWN BY: [Signature]

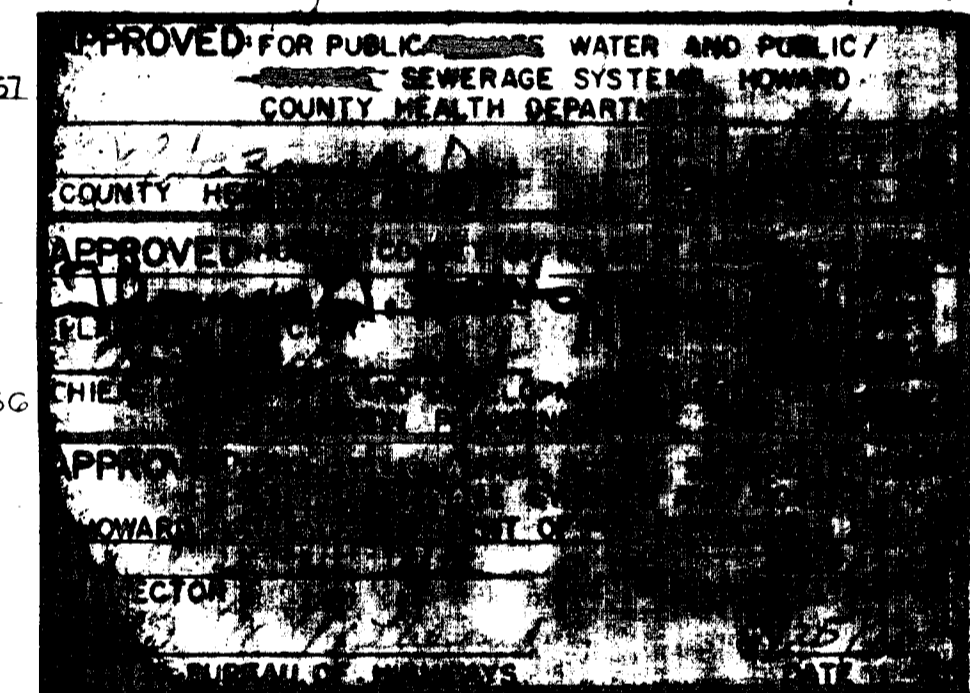
DRAWING NO. **C-2**  
SHEET NO. 2 OF 7  
MP 1072

U.S. TRUCKING  
SECTION ONE BLOCK "C" LOT 1  
BALTIMORE - WASHINGTON  
INDUSTRIAL PARK



SECTION X-X  
FLOOR ELEV. = 256.00

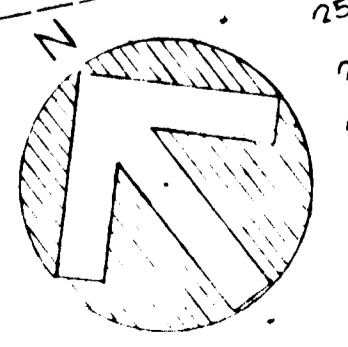
APPROVED  
DIVISION OF LAND DEVELOPMENT  
AND TRANSPORTATION PLANNING  
HOWARD COUNTY, MARYLAND  
DATE 6/28/73



NOV. 1, 1972  
DATE  
REG. NO. 5710

SECTION TWO BLOCK "B"  
BALTIMORE - WASHINGTON  
INDUSTRIAL PARK

PARTIAL  
GRADING PLAN  
SCALE :: 1"=30'-0"



GENERAL ELECTRIC - HOTPOINT  
CHESAPEAKE ZONE FACILITY  
BALTIMORE, WASHINGTON INDUSTRIAL PARK, HOWARD CO., MARYLAND  
PROJECT: BLOCK "C", BALTIMORE - WASHINGTON INDUSTRIAL PARK, ELECTION DISTRICT 8

RECO PROJECT NO. 7135

APPROVED FOR PUBLIC WATER AND PUBLIC SEWERAGE SYSTEMS  
HOWARD COUNTY HEALTH DEPARTMENT

APPROVED  
COUNTY HEALTH DEPARTMENT  
HOWARD COUNTY, MARYLAND

NOV. 1, 1972  
DATE  
REG. NO. 5710

APPROVED  
COUNTY HEALTH DEPARTMENT  
HOWARD COUNTY, MARYLAND

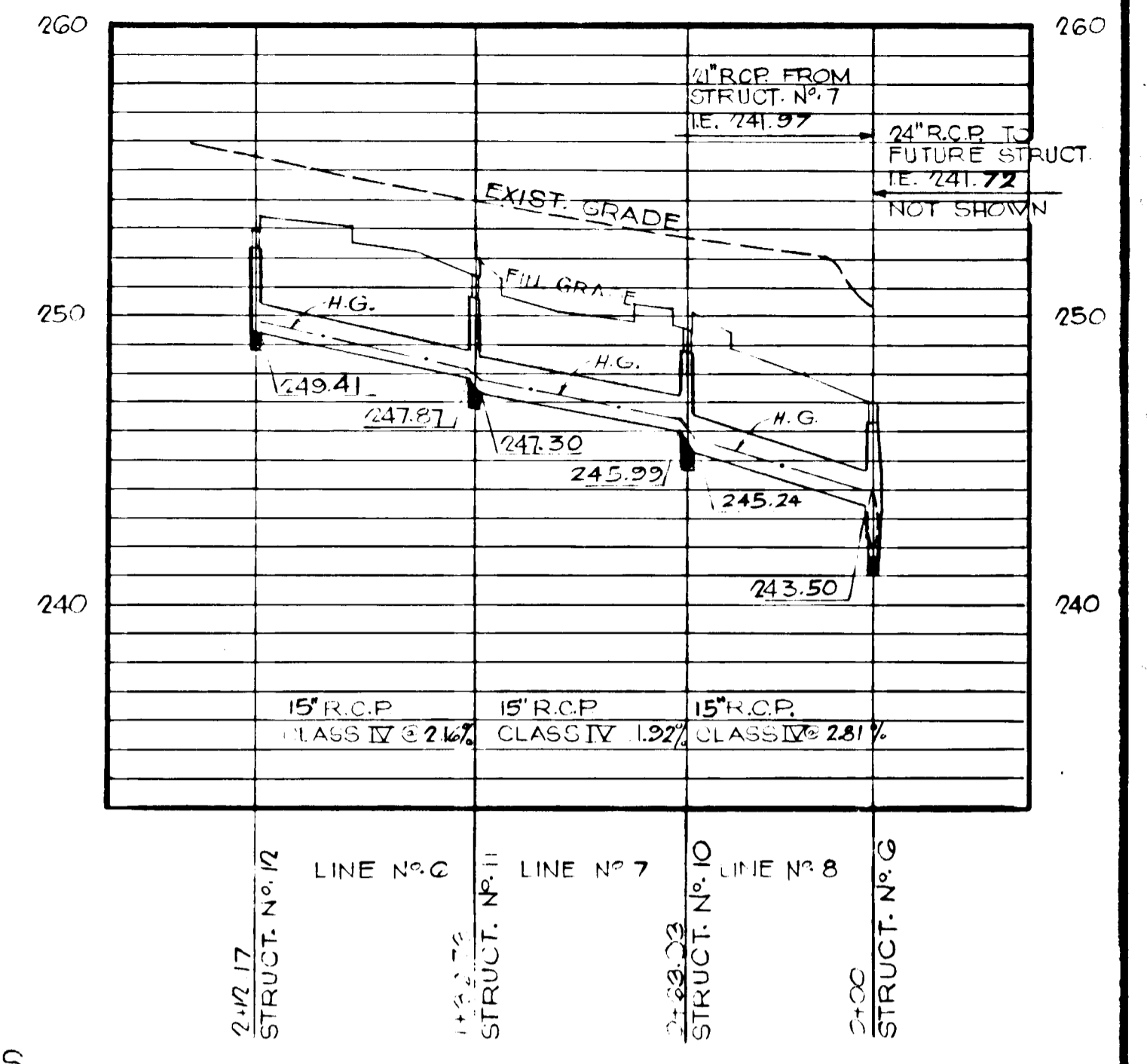
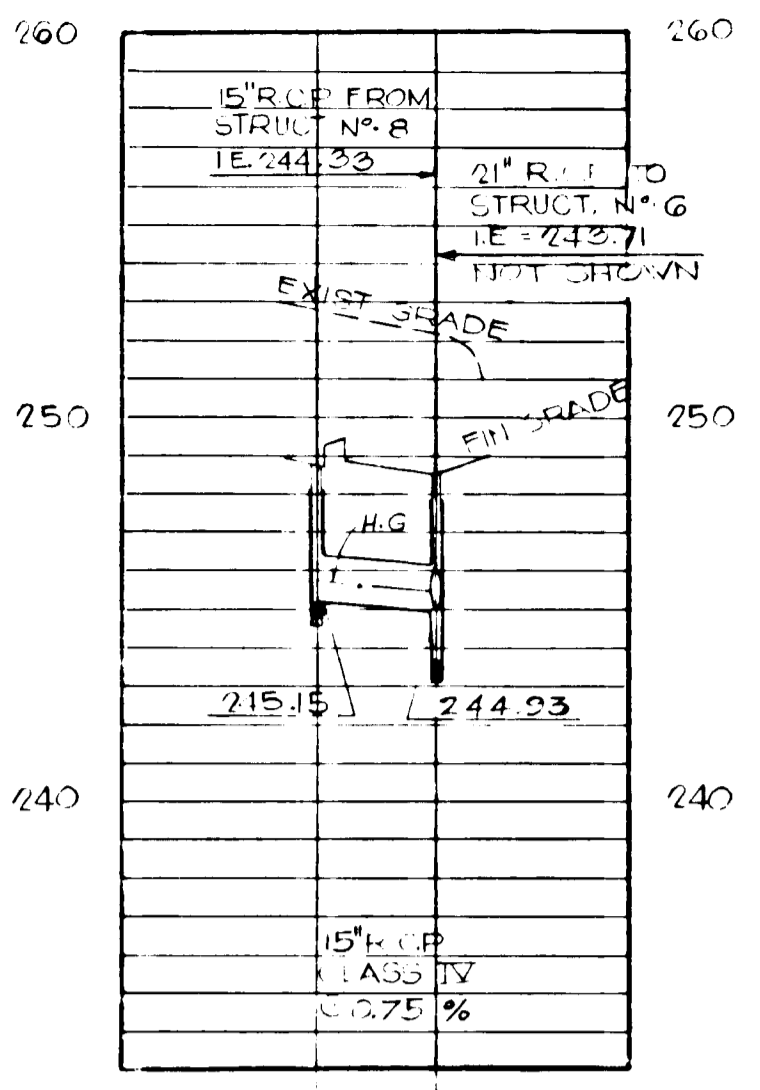
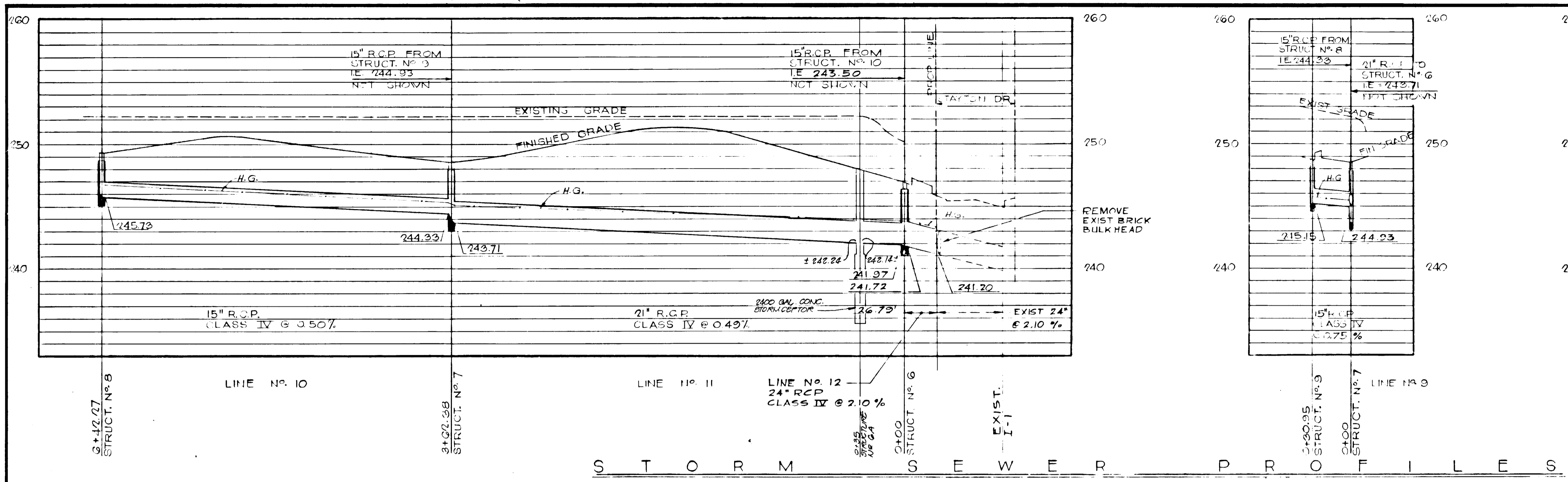
THE MCDERMOTT PARTNERSHIP  
ENGINEERS-PLANNERS-ARCHITECTS  
WASHINGTON, D.C.

SYNOPSIS HENNESSY, INC.  
WASHINGTON, D.C.

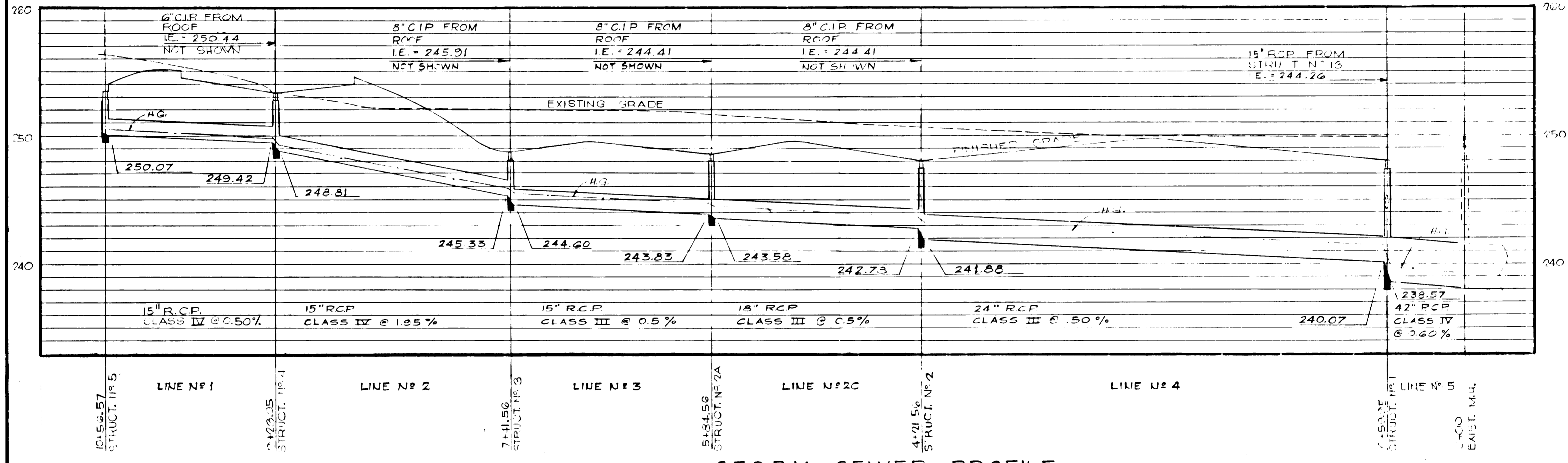
CIVIL  
PARTIAL GRADING PLAN

DRAWN: JD  
CHECKED: JH  
APPROVED: MCC  
DATE: 11-1-72

DRAWING NO.  
**C-3**  
SHEET NO 3 OF 7  
M.P. 1072  
SNP 73-60



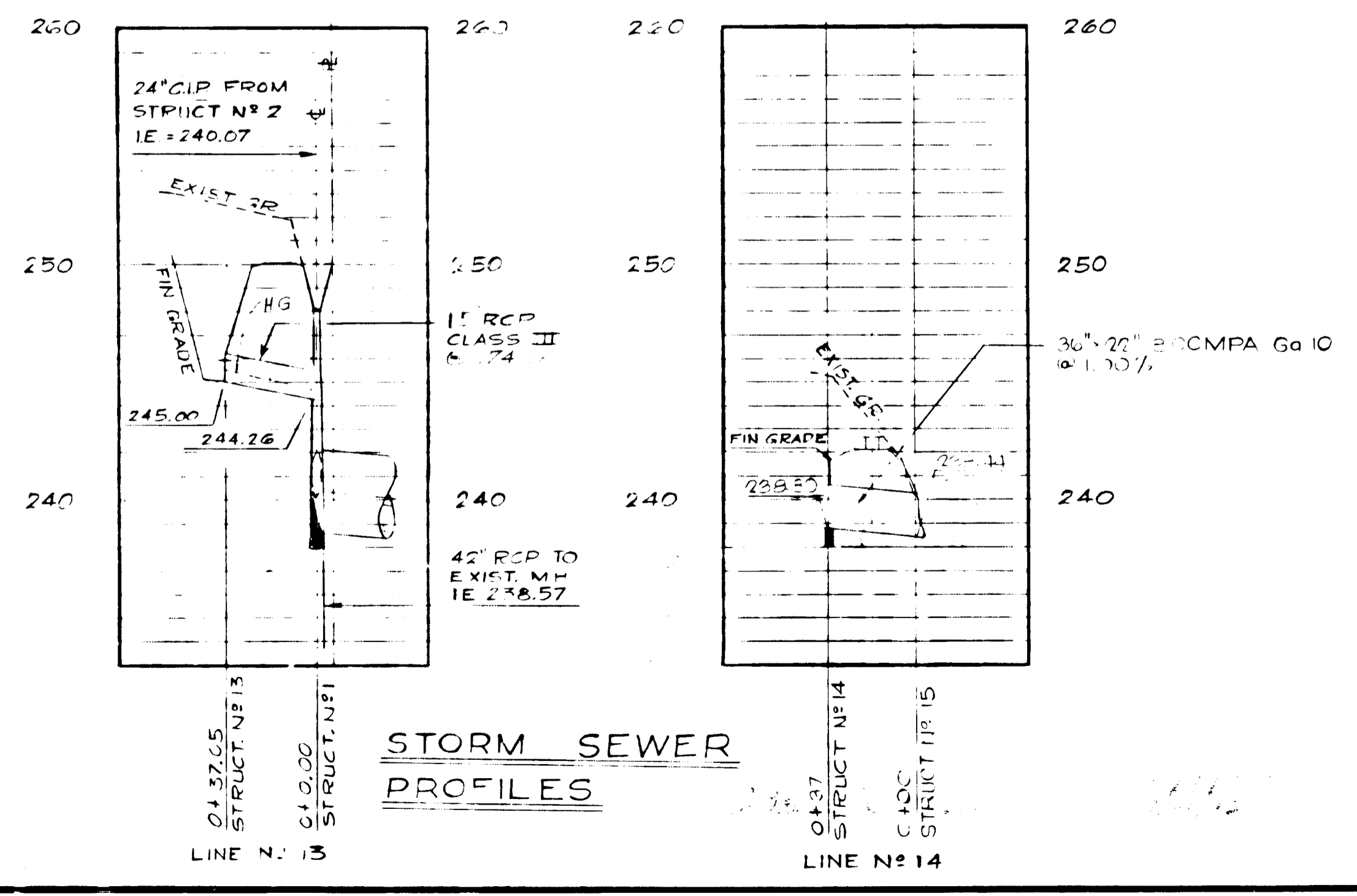
**S T O R M S E W E R P R O F I L E S**



**S T O R M S E W E R P R O F I L E**

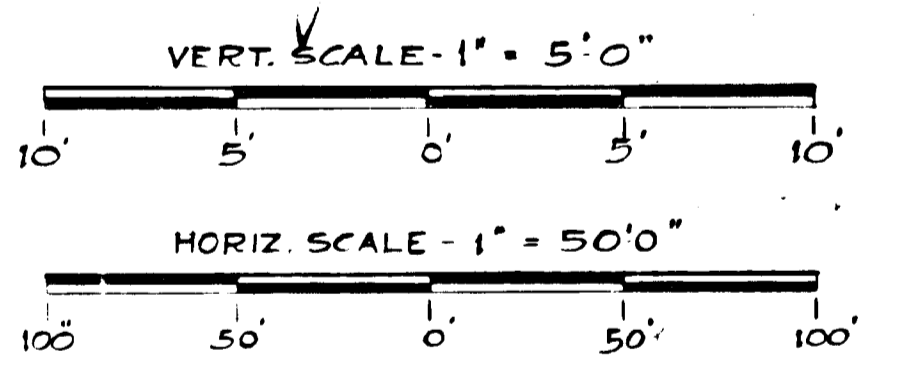
**STORM DRAIN STRUCTURE SCHEDULE**

NO.	TYPE	Q	INV. - IN.	INV. - OUT.	TOP ELEV.
1	4" DIA. MH. W/D GRATE	.21 CFS	15" - 244.26 24" - 240.07	42" - 238.57	249.00
2	4" DIA. MH. W/D GRATE	.23 CFS	18" - 242.72 8" - 244.41	24" - 241.88	249.00
2-A	4" DIA. MH. W/D GRATE	.16 CFS	15" - 243.83 8" - 244.41	18" - 243.58	248.56
3	4" DIA. MH. W/D GRATE	.25 CFS	15" - 245.33 8" - 245.91	15" - 244.60	245.88
4	E-INLET	1.4 CFS	15" - 249.42 6" - 250.44	15" - 248.81	253.44
5	E-INLET	1.16 CFS		15" - 250.07	253.57
6	E-COMBINATION INLET	1.38 CFS	15" - 243.50 21" - 241.72	24" - 241.72	246.70
7	E-INLET	3.41 CFS	15" - 244.33 15" - 244.93	21" - 243.71	248.50
8	E-INLET	4.15 CFS		15" - 245.73	249.23
9	E-INLET	2.20 CFS		15" - 245.15	245.65
10	D-INLET	1.11 CFS	15" - 247.77	15" - 245.24	249.49
11	D-INLET	1.33 CFS	15" - 247.87	15" - 247.30	251.87
12	D-INLET	0.85 CFS		15" - 249.41	252.01
13	TYPE "E" F.E.W. MOD. CASE-2	2.26 CFS		15" - 245.00	
14	TYPE "E" F.E.W. HOW. CASE-55	1.63 CFS		36" x 20" R.C.M.P.A. 238.50	
15	Metal End Sect (A901) SHA. JTL. N. M.D. 371.01			238.44	



**S T O R M S E W E R P R O F I L E S**

APPROVED  
DIVISION OF LAND DEVELOPMENT  
AND TRANSPORTATION PLANNING  
HOWARD COUNTY, MARYLAND  
DATE 6/28/73



APPROVED FOR PUBLIC WATER AND PUBLIC / SEWERAGE SYSTEMS, HOWARD COUNTY HEALTH DEPARTMENT  
COUNTY HEALTH OFFICER  
APPROVED HOWARD COUNTY OFFICE OF PLANNING AND ZONING  
PLANNING DIRECTOR  
CHIEF, DIVISION OF LAND DEVELOPMENT AND TRANSPORTATION PLANNING  
APPROVED FOR PUBLIC WATER, PUBLIC SEWERAGE AND STORM DRAINAGE SYSTEMS AND ROADS  
HOWARD COUNTY DEPARTMENT OF PUBLIC WORKS  
DIRECTOR  
CHIEF BUREAU OF HIGHWAYS

7/3/73  
REG. NO. 5710

**GENERAL ELECTRIC - HOTPOINT**  
CHESAPEAKE ZONE FACILITY  
BALTIMORE, WASHINGTON INDUSTRIAL PARK, HOWARD COUNTY, MARYLAND  
PARCEL C, BLOCK C, BALTIMORE - WASHINGTON INDUSTRIAL PARK, ELECTRON DISTRICT 6

**RECO PROJECT NO. 71135**

**The Mills & Petticoat Partnership**  
ARCHITECTS - ENGINEERS - PLANNERS  
WASHINGTON, D.C.

**SYSKA & HENNESSY, INC.**  
CONSULTING ENGINEERS  
WASHINGTON, D.C.

**CIVIL**

**STORM DRAINAGE PROFILES**

DRAWING NO. **C-4**  
SHEET No 4 of 7  
MP 1072

DATE: 11-1-72

U.S. TRUCKING  
SECTION ONE BLOCK "C"  
LOT 1  
BALTIMORE WASHINGTON  
INDUSTRIAL PARK

SECTION ONE BLOCK "C"  
PARCEL "B"  
BALTIMORE - WASHINGTON  
INDUSTRIAL PARK

**DEVELOPER CERTIFICATION**

"I CERTIFY THAT ALL DEVELOPMENT AND/OR CONSTRUCTION WILL BE DONE ACCORDING TO THIS PLAN OF DEVELOPMENT AND PLAN FOR EROSION AND SEDIMENT CONTROL, AND I ALSO AUTHORIZE PERIODIC ON-SITE INSPECTION BY THE HOWARD SOIL CONSERVATION DISTRICT OF THEIR AUTHORIZED AGENTS, AS ARE DEEMED NECESSARY. DEVIATION FROM THIS PLAN WILL NOT BE MADE UNLESS AUTHORIZED BY THE HOWARD SOIL CONSERVATION DISTRICT."

*Leo E. Gaby*  
SIGNATURE OF DEVELOPER  
3 JUN 73  
DATE

"THIS DEVELOPMENT PLAN IS APPROVED FOR SOIL EROSION AND SEDIMENT CONTROL BY THE HOWARD SOIL CONSERVATION DISTRICT."

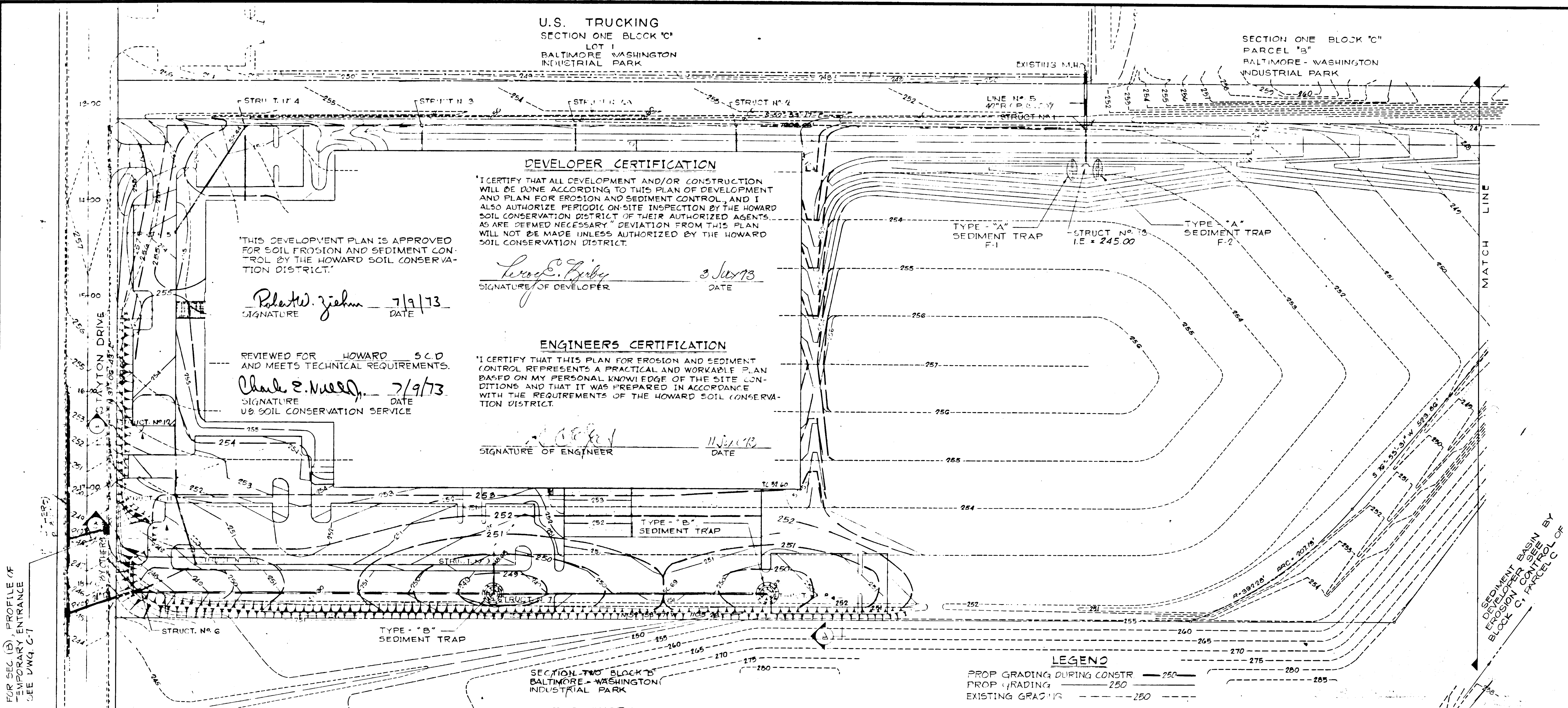
*Robert W. Ziehm*  
SIGNATURE  
7/9/73  
DATE

**ENGINEERS CERTIFICATION**

"I CERTIFY THAT THIS PLAN FOR EROSION AND SEDIMENT CONTROL REPRESENTS A PRACTICAL AND WORKABLE PLAN BASED ON MY PERSONAL KNOWLEDGE OF THE SITE CONDITIONS AND THAT IT WAS PREPARED IN ACCORDANCE WITH THE REQUIREMENTS OF THE HOWARD SOIL CONSERVATION DISTRICT."

*Charles E. Nield*  
SIGNATURE OF ENGINEER  
7/9/73  
DATE

REVIEWED FOR HOWARD S.C.D. AND MEETS TECHNICAL REQUIREMENTS.  
*Charles E. Nield*  
SIGNATURE  
7/9/73  
DATE  
US SOIL CONSERVATION SERVICE



FOR SECTION (B) PROFILE OF TEMPORARY ENTRANCE SEE DWG. C-7

SEDIMENT BASIN BY DEVELOPER SEEN BY EROSION CONTROL OF BLOCK "C" PARCEL "C"

SECTION TWO BLOCK "B"  
BALTIMORE - WASHINGTON  
INDUSTRIAL PARK

**LEGEND**

PROP GRADING DURING CONSTR	250
PROP GRADING	250
EXISTING GRADING	250

**EARTHWORK**

CUT = 26,800 C.Y.  
FILL = 5,400 C.Y.

DISPOSAL AREA SEDIMENT CONTROL PLAN BY STEPHENS AND ASSOCIATES, TOWSON MD ENGINEERS FOR THE BALTIMORE - WASHINGTON INDUSTRIAL PARK.

**AREAS**

PAVED AREA	102,802 SF
ROOF AREA	199,070 SF
TRACK BALLAST AREA	21,506 SF
LAWN AND PLANTING AREA	296,976 SF
TOTAL LOT AREA	721,554 SF = 16.56 Ac.
DISTURBED AREA	481,774 SF = 11.06 Ac.
UNDISTURBED AREA	239,580 SF = 5.50 Ac.
TOTAL AREA	721,554 SF = 16.56 Ac.

**NOTES:**

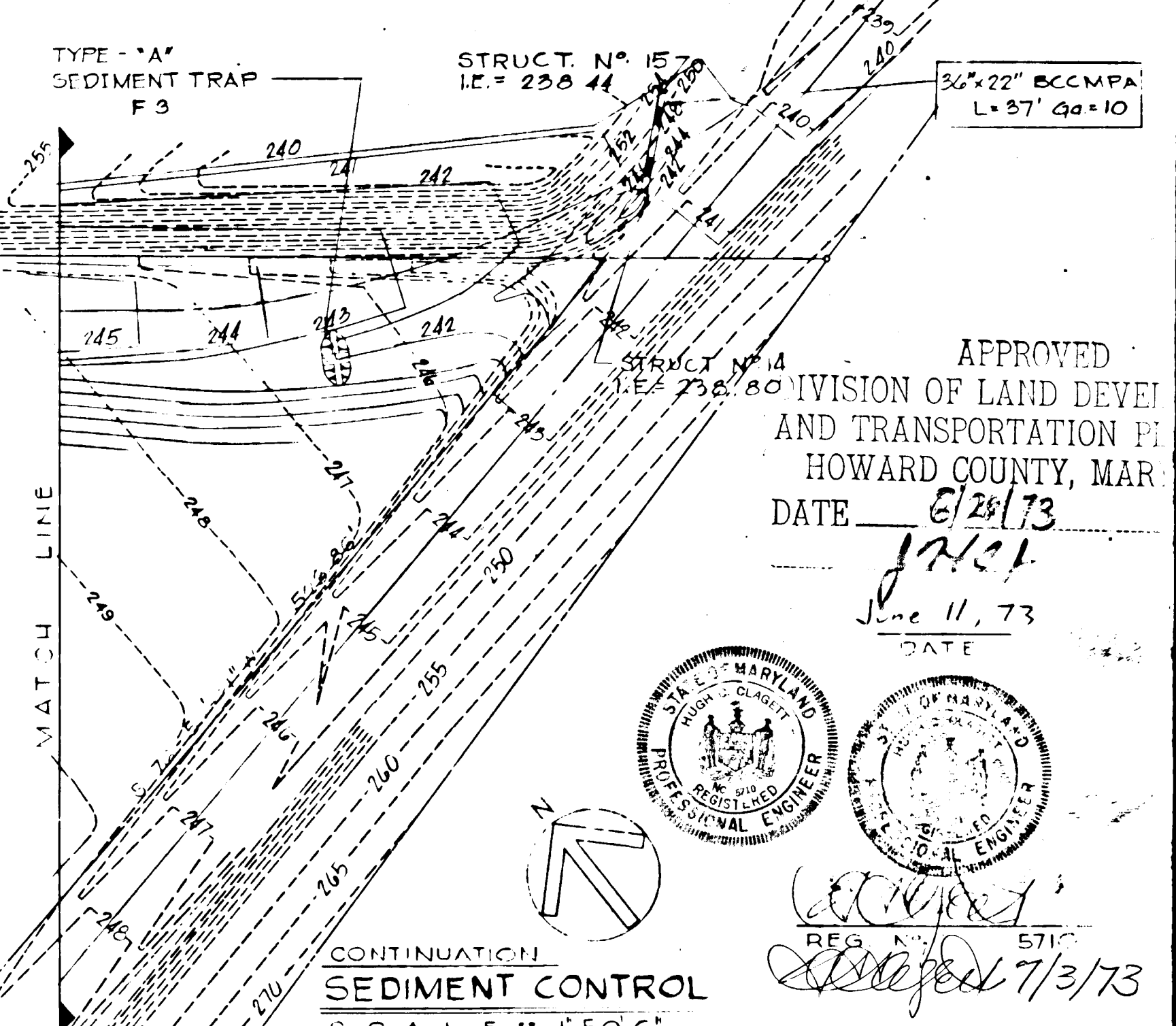
- TOPOGRAPHY PROVIDED BY STEPHENS AND ASSOCIATES, TOWSON, MD ENGINEERS FOR THE BALTIMORE - WASHINGTON INDUSTRIAL PARK.
- ALL FILL AND BACKFILL SHALL BE FREE OF ROOTS, WOOD SCRAP MATERIALS, AND OTHER VEGETABLE MATTER AND REFUSE.
- THE SITE CONTAINS NO EXISTING TREES.
- ALL SEEDING, TEMPORARY AND PERMANENT, SHALL BE A MIXTURE OF 10% KENTUCKY BLUEGRASS AND 90% FESCUE AT 6 LBS PER 1000 SQ FT. FERTILIZER SHALL BE 10-10-10 AT 20 LBS PER 1000 SQ FT ALL IN ACCORDANCE WITH SECTION 12 OF THE SPECIFICATIONS.
- ALL WORK SHALL PROCEED AS OUTLINED IN THE SEQUENCE OF WORK FOR EROSION CONTROL DETAILED ON DRAWING NO. C-7.
- STRUCTURAL MEASURES, SUCH AS BERMS, DIKES, TRAPS, BASINS, ETC. WILL BE INSTALLED AND STABILIZED ACCORDING TO THIS PLAN PRIOR TO ANY OTHER GRADING, CLEARING OR DISTURBANCE OF THE EXISTING SURFACE OF THE SITE.
- ALL STRUCTURAL SEDIMENT CONTROL MEASURES ARE TO REMAIN IN PLACE UNTIL PERMISSION FOR THEIR REMOVAL HAS BEEN OBTAINED FROM THE H.S.C.D., PHONE 465-2180 OR 465-3000, EXT 228.
- NOTIFY THE H.S.C.D. AT LEAST 24 HRS. BEFORE STARTING ANY WORK.

**OWNER AND DEVELOPER**  
GENERAL ELECTRIC CO.  
ONE RIVER ROAD  
SCHENECTADY, N.Y. 12305  
PHONE: 518-374-2211

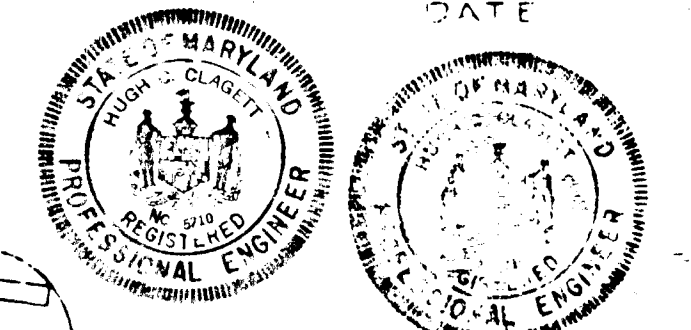
APPROVED FOR PUBLIC WATER AND PUBLIC SEWERAGE SYSTEMS, HOWARD COUNTY HEALTH DEPARTMENT  
*Robert W. Ziehm*  
COUNTY HEALTH OFFICER  
8/1/73  
DATE

APPROVED HOWARD COUNTY OFFICE OF PLANNING AND ZONING  
*Charles E. Nield*  
PLANNING DIRECTOR  
8/1/73  
DATE

APPROVED FOR PUBLIC WATER, PUBLIC SEWERAGE AND STORM DRAINAGE SYSTEMS AND ROADS  
HOWARD COUNTY DEPARTMENT OF PUBLIC WORKS  
*Richard J. ...*  
DIRECTOR  
7/23/73  
DATE



APPROVED DIVISION OF LAND DEVELOPMENT AND TRANSPORTATION PLANNING  
HOWARD COUNTY, MARYLAND  
DATE 8/28/73  
*J. ...*  
DATE June 11, 73



CONTINUATION OF  
**SEDIMENT CONTROL**  
SCALE: 1/4" = 1'-0"

**GENERAL ELECTRIC - HOTPOINT**  
C.H.E. SAPEAKE ZONE FACILITY  
PARCEL "C" BLOCK "C" BALTIMORE - WASHINGTON INDUSTRIAL PARK

**The Mills & Petticord Partnership**  
ARCHITECTS - ENGINEERS - PLANNERS  
WASHINGTON D.C.

**SYSKA & HENNESSY, INC.**  
CONSULTING ENGINEERS  
WASHINGTON D.C.

**CIVIL**  
**SEDIMENT CONTROL PLAN**  
**AND DETAILS**

DRAWING NO. **C-5**  
SHEET NO. 5 OF 7  
MP 1072

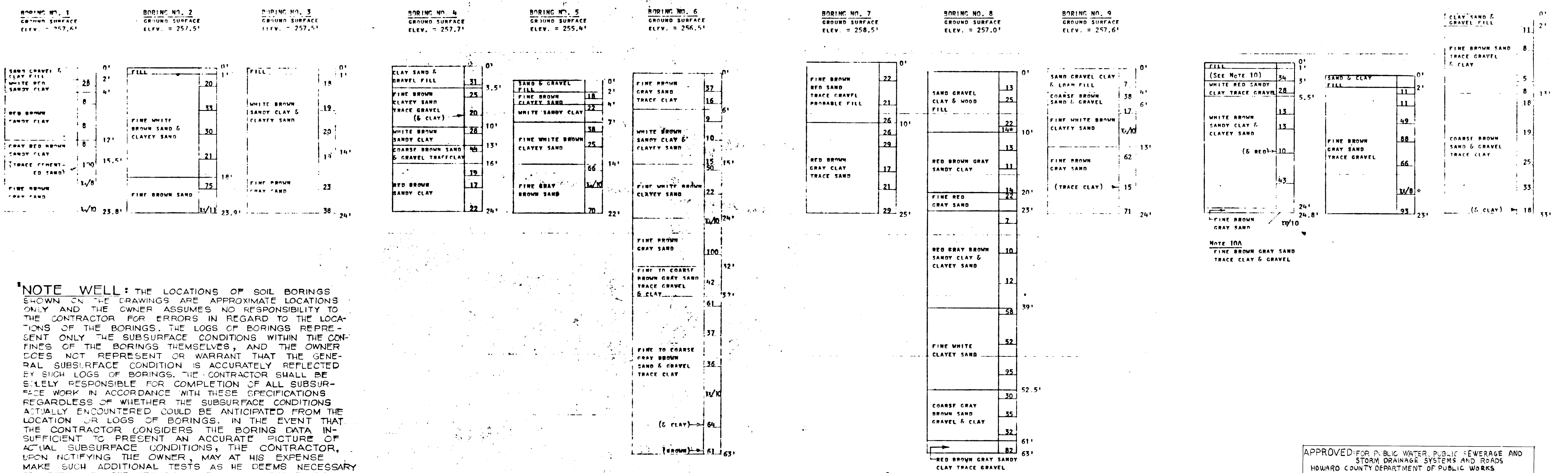
RECO PROJECT NO. 71135

DATE 6-4-73  
APPROVED HCC  
CHECKED JH  
DRAWN JD

50P 73-0

TEST BORINGS  
6  
GRANGER & OLIVER, INC.

Project: GENERAL ELECTRIC - HOT POINT, OFFICE & WAREHOUSE  
Location: BALTIMORE-WASHINGTON INDUSTRIAL PARK, HOWARD COUNTY, MARYLAND  
For: THE MILLS & PETTICORD PARTNERSHIP, 1720 EYE STREET, N.W., WASHINGTON, D.C. 20006  
Job Number: 1767 Date: 9/5/72 Scale: 1" = 8' By: D.S.O.



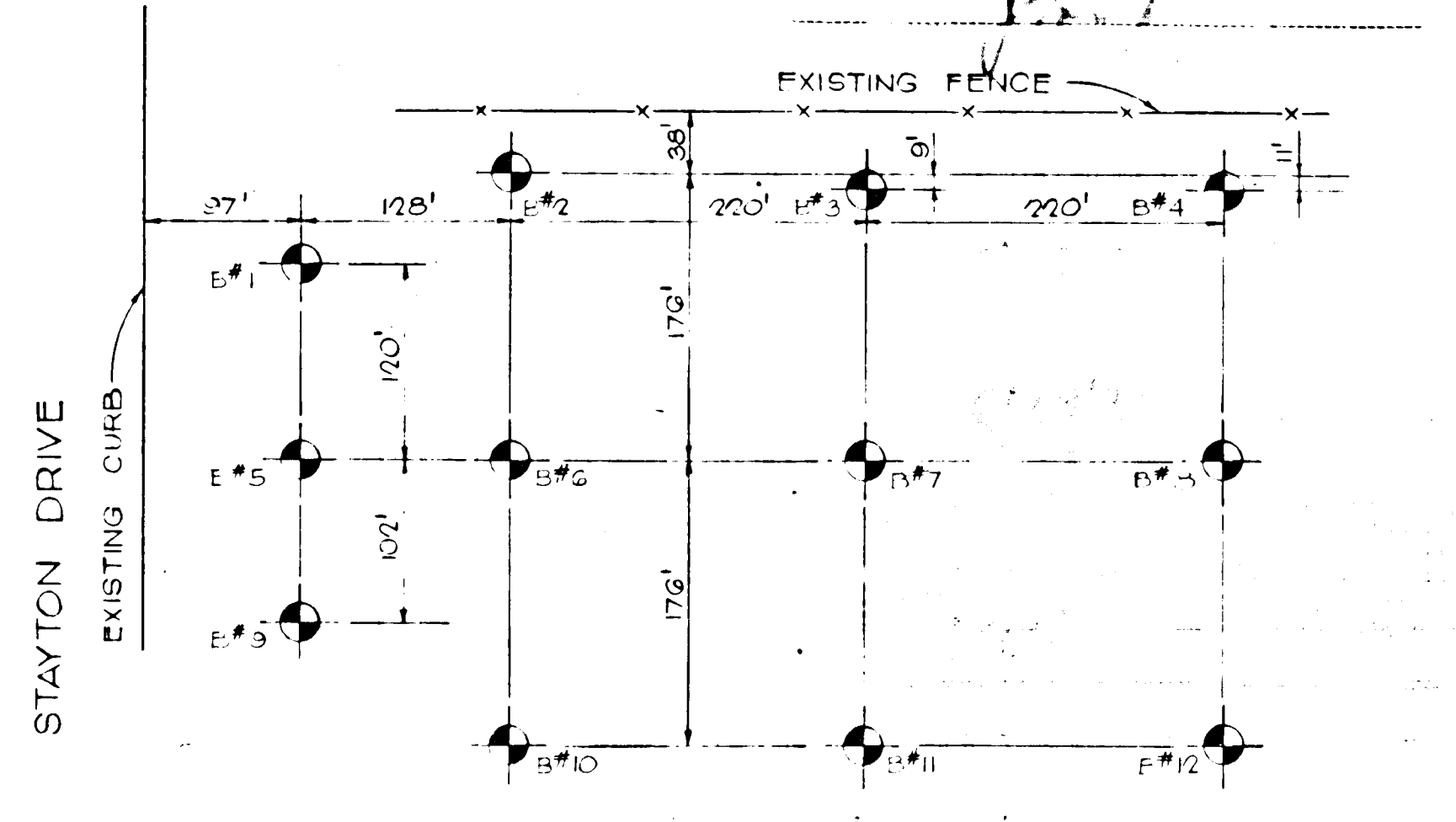
**NOTE WELL:** THE LOCATIONS OF SOIL BORINGS SHOWN ON THE DRAWINGS ARE APPROXIMATE LOCATIONS ONLY AND THE OWNER ASSUMES NO RESPONSIBILITY TO THE CONTRACTOR FOR ERRORS IN REGARD TO THE LOCATIONS OF THE BORINGS. THE LOGS OF BORINGS REPRESENT ONLY THE SUBSURFACE CONDITIONS WITHIN THE CONFINES OF THE BORINGS THEMSELVES, AND THE OWNER DOES NOT REPRESENT OR WARRANT THAT THE GENERAL SUBSURFACE CONDITION IS ACCURATELY REFLECTED BY SUCH LOGS OF BORINGS. THE CONTRACTOR SHALL BE SOLELY RESPONSIBLE FOR COMPLETION OF ALL SUBSURFACE WORK IN ACCORDANCE WITH THESE SPECIFICATIONS REGARDLESS OF WHETHER THE SUBSURFACE CONDITIONS ACTUALLY ENCOUNTERED COULD BE ANTICIPATED FROM THE LOCATION OR LOGS OF BORINGS. IN THE EVENT THAT THE CONTRACTOR CONSIDERS THE BORING DATA INSUFFICIENT TO PRESENT AN ACCURATE PICTURE OF ACTUAL SUBSURFACE CONDITIONS, THE CONTRACTOR, UPON NOTIFYING THE OWNER, MAY AT HIS EXPENSE MAKE SUCH ADDITIONAL TESTS AS HE DEEMS NECESSARY TO DETERMINE SUBSURFACE CONDITIONS BEFORE SUBMITTING HIS BID.

**NOTE:** Unless otherwise noted, the samples were obtained with a 2 inch (53) split tube sampler driven by a 140 pound weight falling 30 inches. The number of blows of the 140 pound weight required to drive the sampler 1 foot are indicated in the right hand column of each boring log. The samples were classified visually.  
Unless otherwise noted, the borings were made by the customary method involving the use of a wire. The water data obtained and the methods of penetration used to obtain the data are noted above. This data may or may not indicate the true hydraulic grade.  
WHERE THE SAMPLER PENETRATED LESS THAN ONE FOOT THE PENETRATION IN INCHES IS SHOWN UNDER THE NUMBER OF BLOWS, THUS: 1 1/8  
FAILURE TO RECOVER A SAMPLE IS INDICATED THUS: (NONE)

APPROVED FOR PUBLIC WATER, PUBLIC SEWERAGE AND STORM DRAINAGE SYSTEMS AND ROADS  
HOWARD COUNTY DEPARTMENT OF PUBLIC WORKS  
DIRECTOR \_\_\_\_\_ DATE \_\_\_\_\_  
CHIEF BUREAU OF HIGHWAYS \_\_\_\_\_ DATE \_\_\_\_\_

THE MILLS & PETTICORD PARTNERSHIP  
ARCHITECTS - ENGINEERS - PLANNERS  
WASHINGTON, D.C.  
6/23/73

BORING NO.	TIME SEQUENCE	WATER DATA		REMARKS
		DEPTH TO WATER	CASING DEPTH	
1.	ON COMPLETION	11'	5'	CAVED & DRY AT 22' DEPTH.
	BALLED TO	20.5'	5'	
	60 MIN. AFTER BAILING	21'	5'	
	2 HRS. " " "	21'	NONE	
2.	ON COMPLETION	10'	5'	CAVED & DRY AT 20.5' DEPTH.
	BALLED TO	15'	5'	
	15 MIN. AFTER BAILING	15.5'	5'	
	20 " " "	16'	NONE	
3.	ON COMPLETION	17.5'	5'	CAVED & DRY AT 19' DEPTH.
	25 MIN. AFTER COMPLETION	18'	NONE	
	2 HRS. " " "	18.5'	"	
	5 HRS. " " "	18.5'	"	
4.	ON COMPLETION	---	NONE	NO WATER WAS USED AND NONE WAS ENCOUNTERED. CAVED & DRY AT 20' DEPTH.
	15 MIN. AFTER COMPLETION	---	"	
	20 " " "	---	"	
	7 DAYS " " "	---	"	
5.	ON COMPLETION	17.5'	5'	CAVED & DRY AT 18.5' DEPTH.
	15 MIN. AFTER COMPLETION	18'	5'	
	20 MIN. " " "	18'	NONE	
	20 HRS. " " "	---	"	
6.	ON COMPLETION	34'	59'	CAVED & DRY AT 18' DEPTH.
	20 MIN. AFTER COMPLETION	34'	59'	
	80 " " "	29'	NONE	
	21 HRS. " " "	28'	"	
7.	ON COMPLETION	5.5'	13'	CAVED & DRY AT 22.5' DEPTH.
	BALLED TO	22.5'	13'	
	75 MIN. AFTER BAILING	22.5'	13'	
	95 MIN. AFTER " " "	22.5'	NONE	
8.	ON COMPLETION	17'	5'	CAVED & DRY AT 22.5' DEPTH.
	2 HRS. AFTER COMPLETION	15.5'	5'	
	2.1 HRS. " " "	15.5'	NONE	
	24 " " "	15'	"	
9.	ON COMPLETION	17'	9'	CAVED & DRY AT 23' DEPTH.
	25 MIN. AFTER COMPLETION	19.5'	9'	
	40 " " "	20'	NONE	
	3 HRS. " " "	20.5'	"	
10.	ON COMPLETION	10.5'	9'	CAVED & DRY AT 23' DEPTH.
	BALLED TO	21.5'	9'	
	15 MIN. AFTER BAILING	21.5'	9'	
	25 " " "	21'	NONE	
11.	ON COMPLETION	19.5'	15.5'	CAVED & DRY AT 19' DEPTH.
	10 MIN. AFTER COMPLETION	19.5'	15.5'	
	20 " " "	---	"	
	7 DAYS " " "	---	"	
12.	ON COMPLETION	28'	27.5'	CAVED & DRY AT 18' DEPTH.
	5 MIN. AFTER COMPLETION	28'	27.5'	
	25 " " "	---	"	
	2 HRS. " " "	---	"	



BORING LOCATION PLAN  
SCALE: 1" = 100'-0"



7/3/73

**GENERAL ELECTRIC - HOTPOINT**  
CHESAPEAKE ZONE FACILITY  
RECO PROJECT NO. 71135

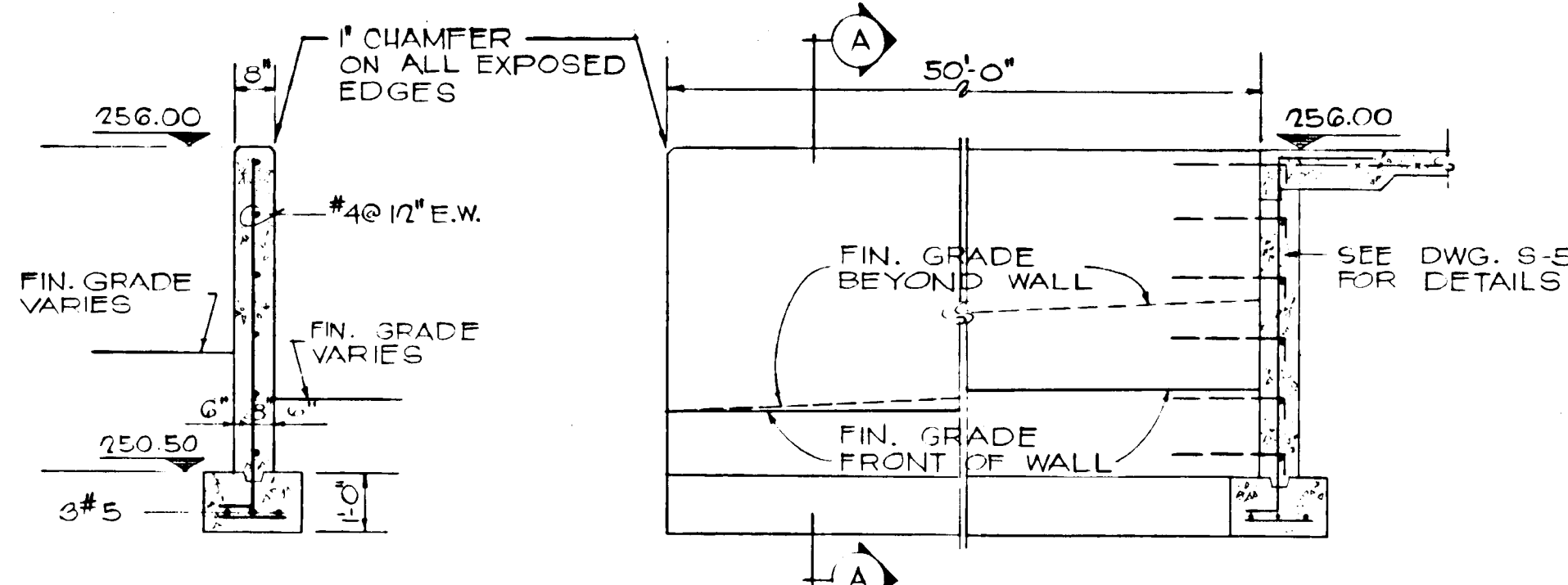
**The Mills & Petticord Partnership**  
ARCHITECTS - ENGINEERS - PLANNERS  
WASHINGTON, D.C.

**SYSKA & HENNESSY, INC.**  
CONSULTING ENGINEERS  
WASHINGTON, D.C.

**CIVIL**  
**BORING LOGS AND PLAN**

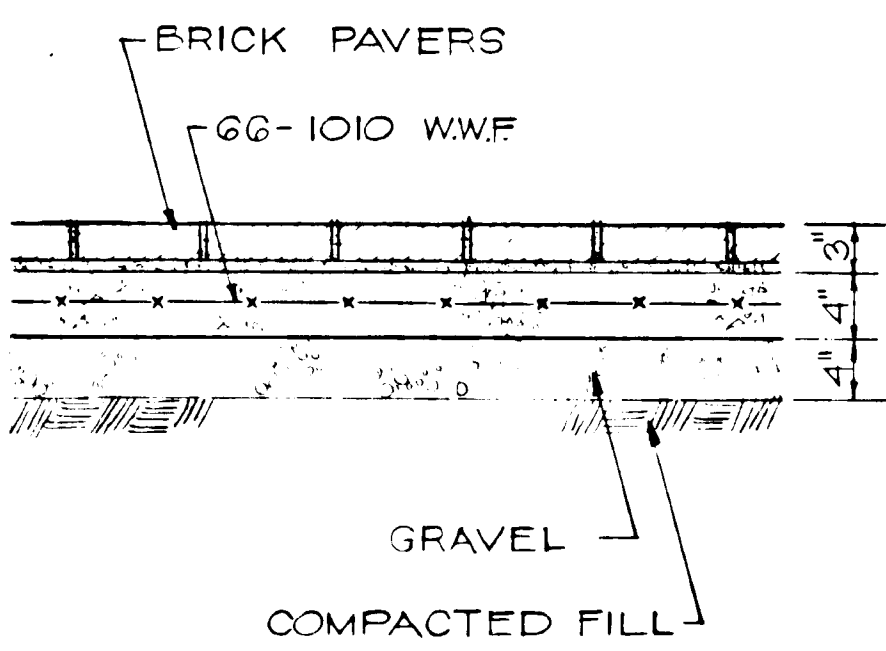
DRAWING NO. **C-6**  
SCALE: 6" = 6'

DRAWN JD CHECKED JH APPROVED HCC DATE JAN 3, 73  
MP 1072

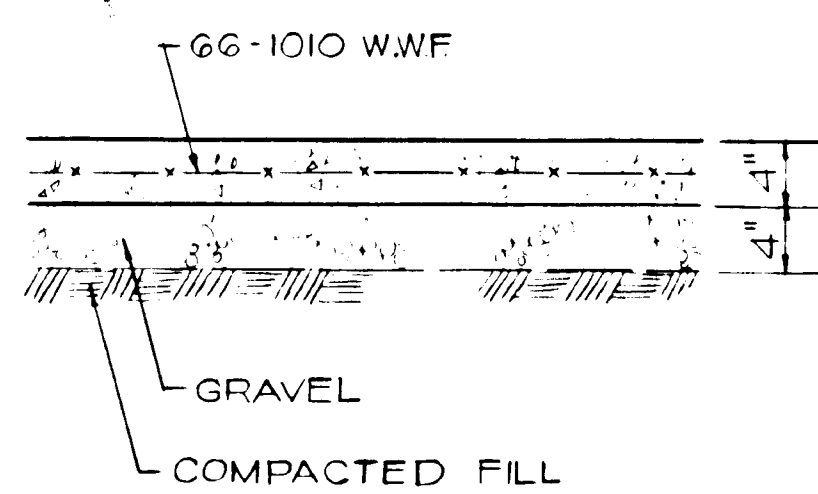


SECTION "A"  
SCALE :: 3/8"=1'-0"

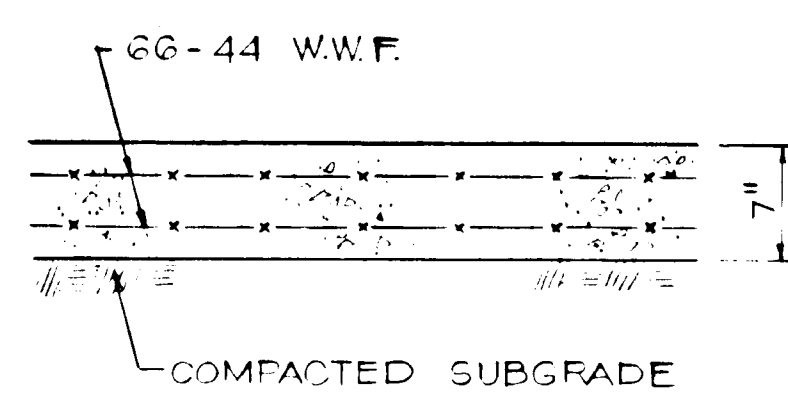
ELEVATION I  
SCALE :: 3/8"=1'-0"



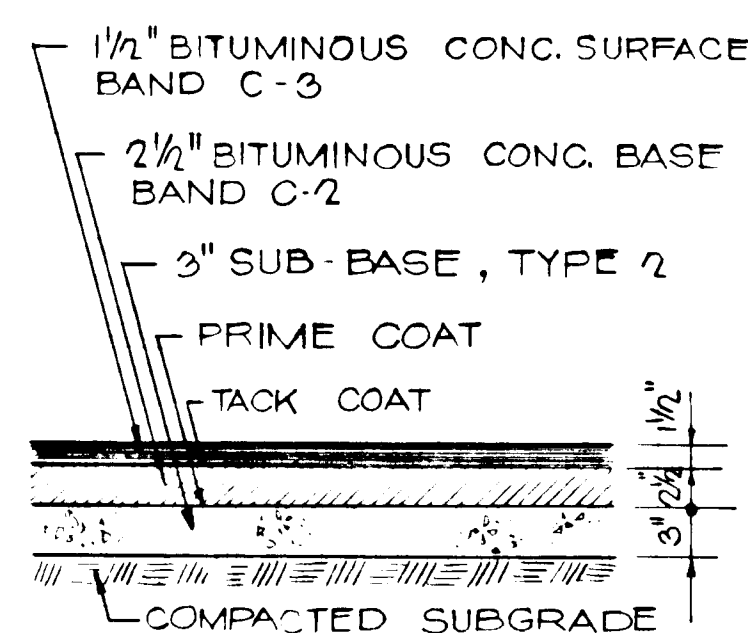
BRICK SIDEWALK  
DETAIL "B"  
SCALE :: 1"=1'-0"



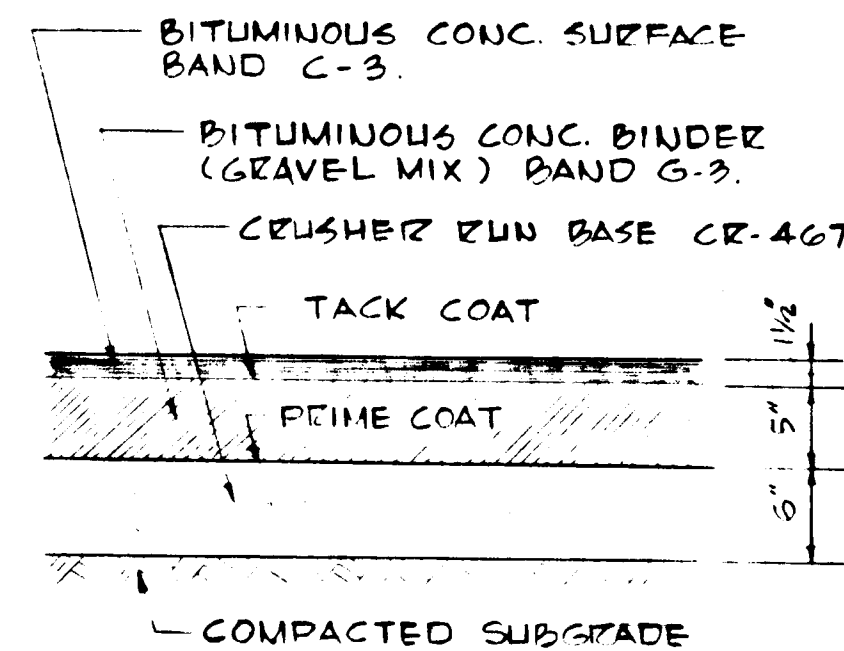
CONCRETE SIDEWALK  
DETAIL "C"  
SCALE :: 1"=1'-0"



CONCRETE APRON  
DETAIL "D"  
SCALE :: 1"=1'-0"

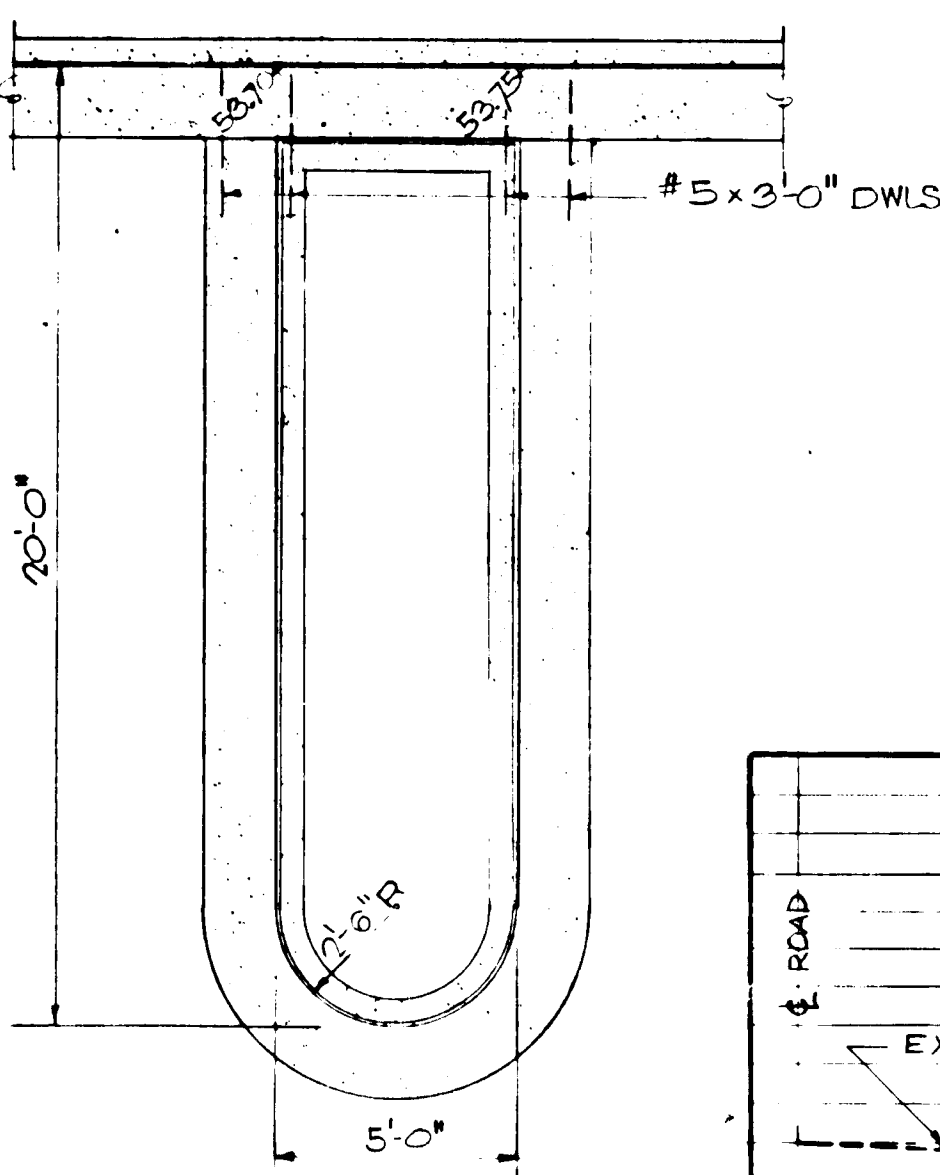


PARKING AREA PAVT.  
DETAIL "E"  
SCALE :: 1"=1'-0"

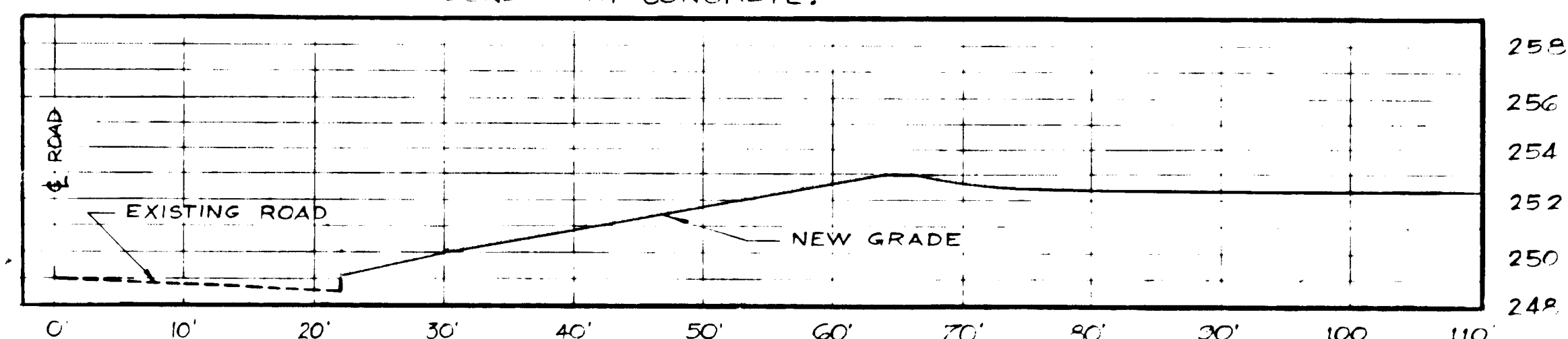


TRUCK DRIVE PAVT.  
DETAIL "F"  
SCALE :: 1"=1'-0"

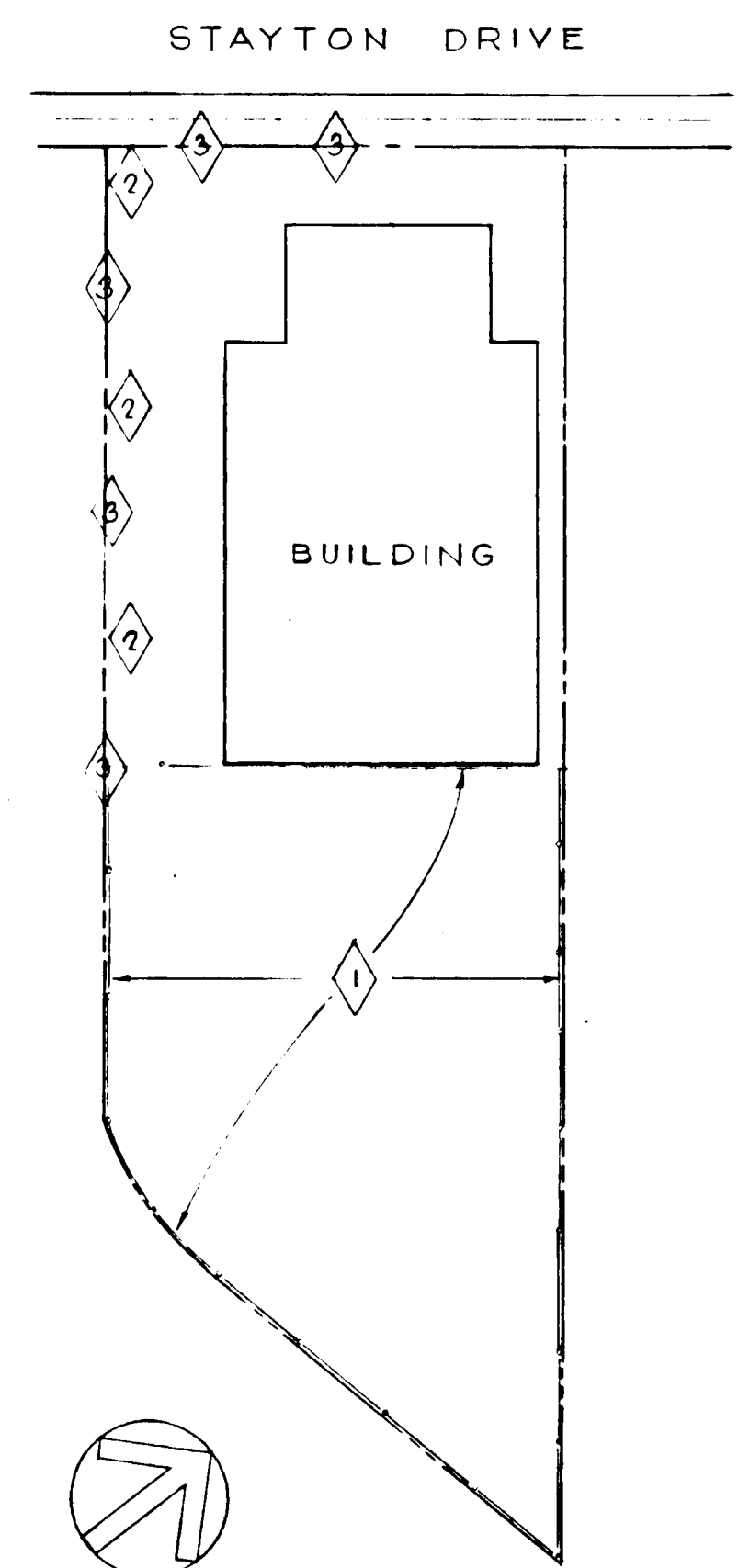
NOTE:  
PRIME COAT SHALL BE MC-3 APPLIED AT THE RATE OF 0.2 TO 0.5 GAL/SY, 24 HOURS IN ADVANCE OF THE BINDER COURSE.



TRANSVERSE EXP. JOINT  
DETAIL "A"  
SCALE :: 1/4"=1'-0"



TEMPORARY ENTRANCE FROM STAYTON DR.  
SCALE :: 1"=10'-0" (HORIZONTAL) 1"=5'-0" (VERTICAL)



SEDIMENT CONTROL MAP  
SCALE :: 1"=200'-0"

SEQUENCE OF WORK FOR EROSION CONTROL

1. THIS ENTIRE AREA SHALL BE TOPSOILED, LIMED, FERTILIZED, SEEDED, MULCHED and MAINTAINED IN ACCORDANCE WITH SECTION 2-B OF THE SPECIFICATIONS, EXCEPT THAT THE MOWING HEIGHT SHALL BE 3 INCHES.
2. ROUGH GRADE AREA ALONG STORM DRAIN LINES NO. 10, NO. 11, and NO. 12. INSTALL SAID LINES ALONG WITH STRUCTURES NO. 6, NO. 7, NO. 8 and SEDIMENT TRAPS AT STRUCTURES NO. 7 and NO. 8 AS SHOWN.
3. COVER STRUCTURE NO. 6, CONSTRUCT EARTH BERM SEDIMENT TRAPS and TEMPORARY CONSTRUCTION ENTRANCE AS SHOWN ON DWG. C-5 and C-6.
4. COMPLETE ROUGH GRADING AS SHOWN ON DWG. C-5.
5. START BUILDING CONSTRUCTION AND INSTALLATION OF PERMANENT UNDERGROUND STORM DRAINAGE SYSTEM. COVER STORM DRAINAGE STRUCTURES TO PRECLUDE INFILTRATION OF SILT.
6. AFTER BUILDING IS UNDER ROOF and the ROOF DRAINAGE SYSTEM IS IN OPERATION, SUBGRADING OF THE PAVED AREAS MAY BE ACCOMPLISHED.
7. PLACE STONE BASE COURSE MATERIAL, OPEN DRAINAGE STRUCTURES and REMOVE TEMPORARY BERMS and SEDIMENT TRAPS.
8. COMPLETE RAILROAD EMBANKMENT and OPEN DITCHES. INSTALL FINAL GRADING SEDIMENT TRAPS and SOD DITCHES FOR THE ENTIRE WIDTH OF THE BOTTOM and 5 FEET UP THE SIDESLOPES, MEASURED ON THE SLOPE, and SEED THE REMAINING NEWLY DISTURBED AREA. SEEDING and SODDING SHALL BE IN ACCORDANCE WITH SECTION 2-B OF THE SPECIFICATIONS.
9. ALL ADDITIONAL DISTURBED AREAS NOT COVERED BY BUILDING OR PAVING SHALL BE FINISHED AS PER SECTION 2-B OF THE SPECIFICATIONS.
10. AS SOON AS OPEN AREAS and PERMANENT DITCHES ARE STABILIZED, SEDIMENT TRAPS MAY BE REMOVED and THAT AREA SODDED.

APPROVED FOR PUBLIC WATER, PUBLIC SEWERAGE AND STORM DRAINAGE SYSTEMS AND ROADS  
HOWARD COUNTY DEPARTMENT OF PUBLIC WORKS  
DIRECTOR: *[Signature]* DATE: 7/22/73  
CHIEF BUREAU OF HIGHWAYS: *[Signature]* DATE: 7/25/73

APPROVED  
DIVISION OF LAND DEVELOPMENT AND TRANSPORTATION PLANNING  
HOWARD COUNTY, MARYLAND  
DATE: 6/29/73  
*[Signature]*



*[Signature]* 7/3/73

**GENERAL ELECTRIC - HOTPOINT**  
 FACILITY  
 CHESAPEAKE ZONE  
 BALTIMORE, WASHINGTON, INDUSTRIAL PARK, HOWARD CO., MARYLAND

**The Mills & Petticoard Partnership**  
 ARCHITECTS - ENGINEERS - PLANNERS  
 1720 EYE STREET, N.W. WASHINGTON, D.C.

**SYSKA & HENNESSY, INC.**  
 CONSULTING ENGINEERS  
 WASHINGTON, D.C.

RECO PROJECT NO. 71135

**CIVIL**  
**SITE DETAILS & SEDIMENT CONTROL**

DRAWN: JD  
 CHECKED: JH  
 APPROVED: HCC  
 DATE:

DRAWING NO. **C-7**  
 SHEET NO. 7 OF 7  
 MP 1522