

APPROVED FOR PUBLIC WATER AND PUBLIC SEWERAGE SYSTEMS

HOWARD COUNTY HEALTH DEPARTMENT

J. Blazan, MD 1/12/73
COUNTY HEALTH OFFICER DATE

APPROVED: HOWARD COUNTY OFFICE OF PLANNING & ZONING

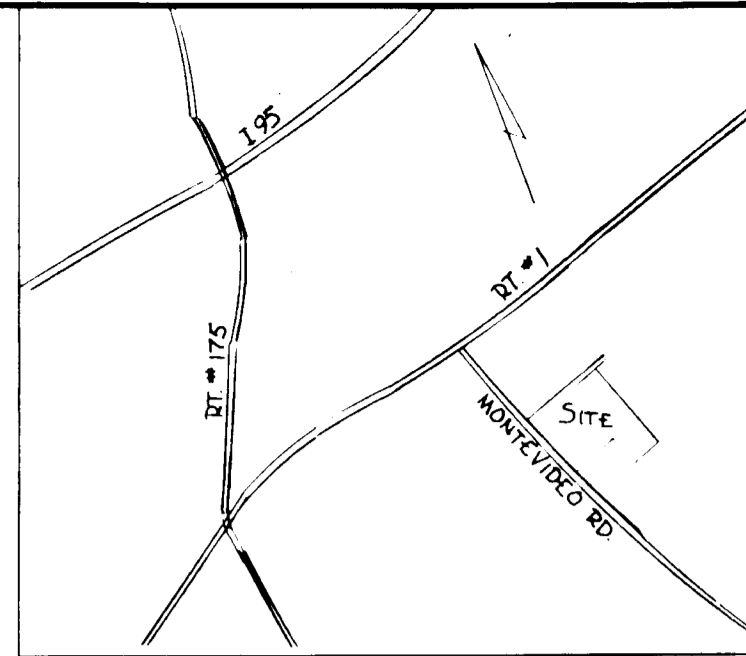
Thomas J. Harris 1-12-73
PLANNING DIRECTOR DATE

CHIEF, DIVISION OF LAND DEVELOPMENT AND TRANSPORTATION PLANNING

APPROVED FOR PUBLIC WATER, PUBLIC SEWERAGE AND STORM DRAINAGE SYSTEMS AND ROADS

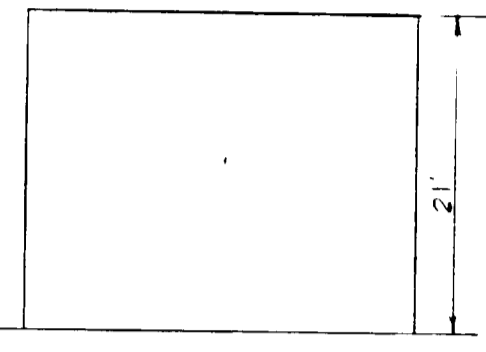
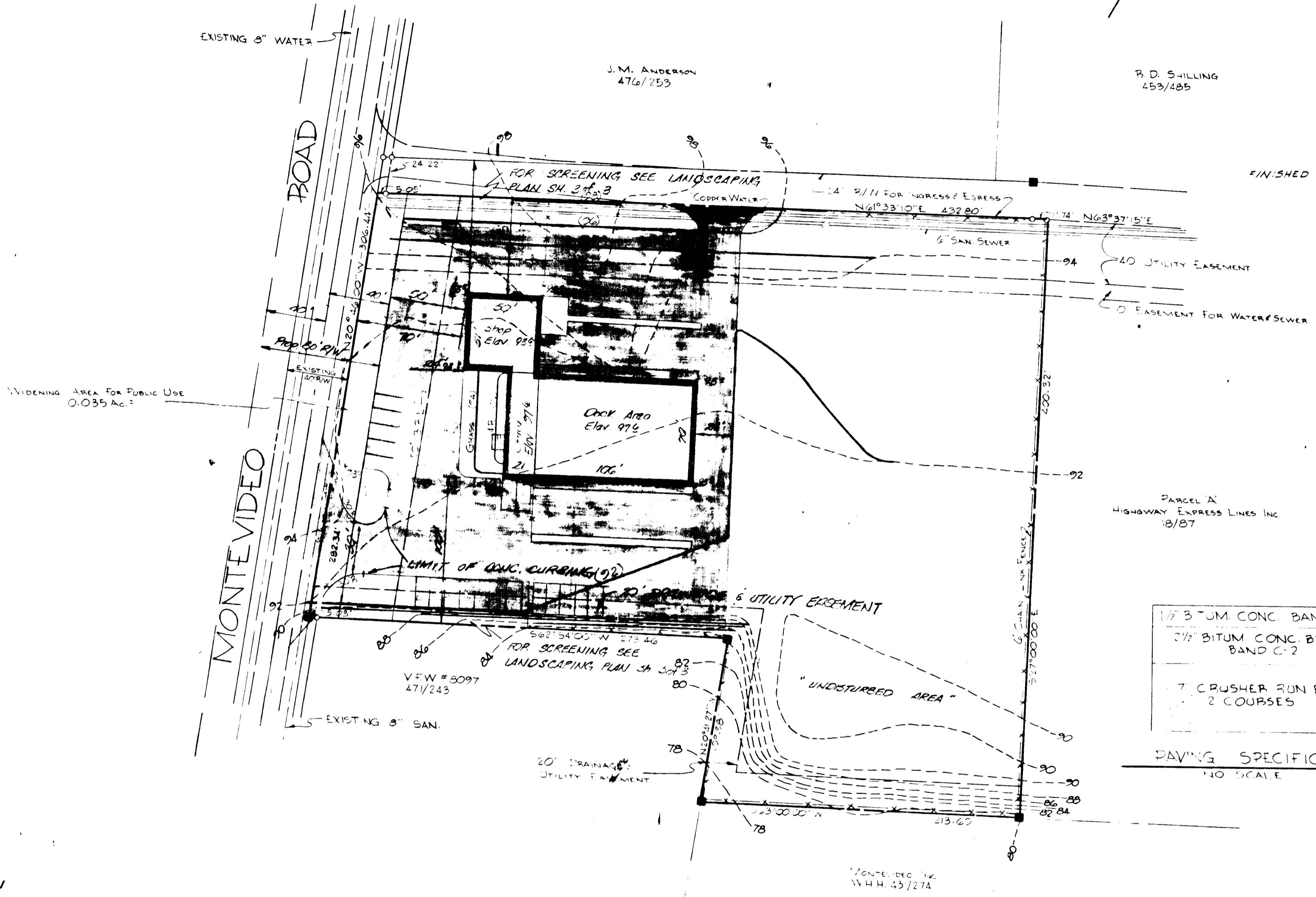
William A. Altman 1/11/73
DIRECTOR DATE

W.C. Fulbert 1-10-73
CHIEF, BUREAU OF HIGHWAYS DATE

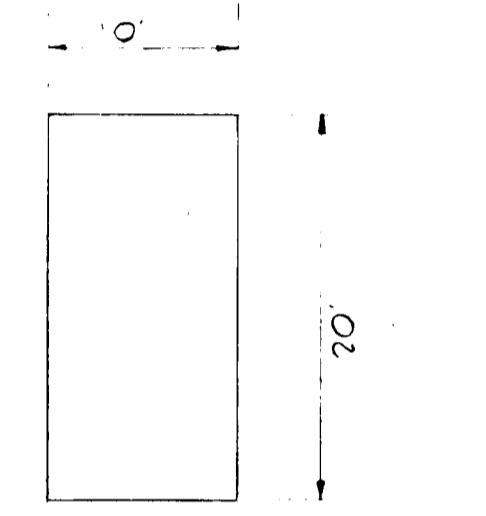


VICINITY MAP

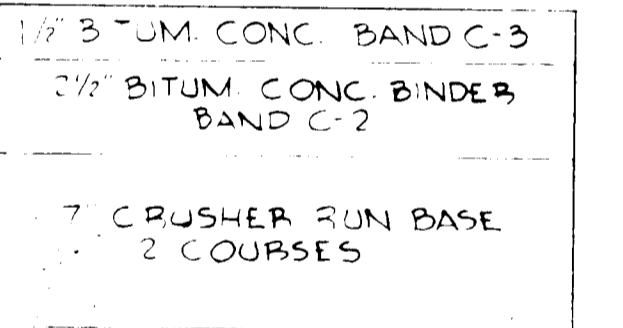
Nov. 9, 1972



BUILDING PROFILE
NO SCALE



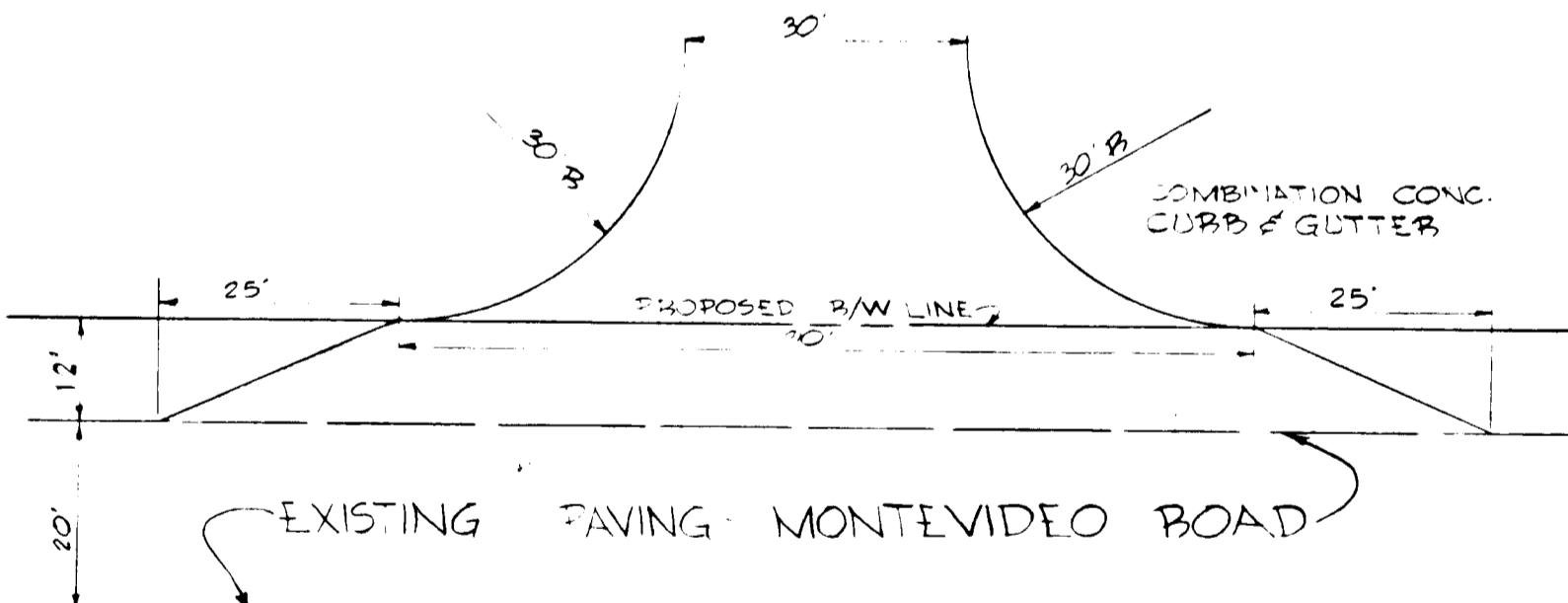
TYPICAL PARKING SPACE
NO SCALE



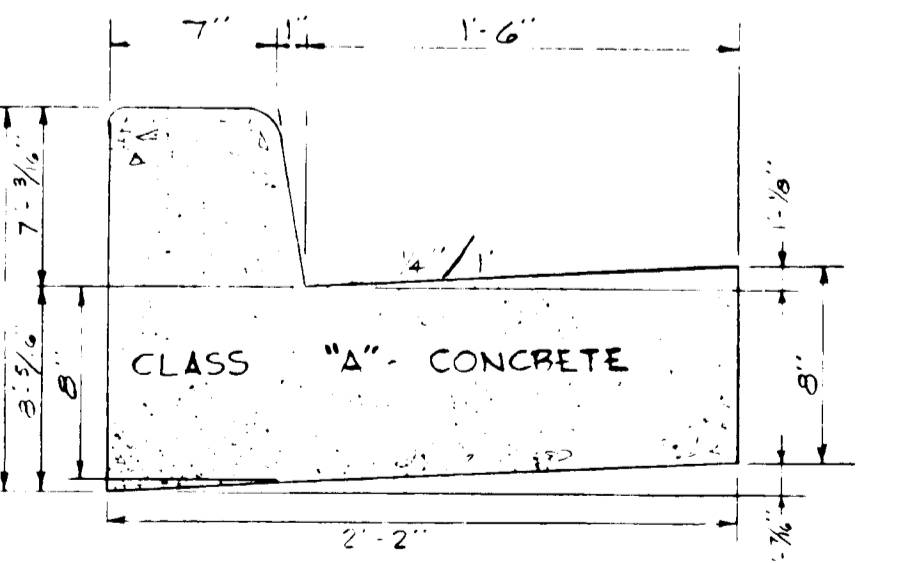
PAVING SPECIFICATIONS
NO SCALE

GENERAL NOTES

- 1) ZONING - M-2
- 2) PROPOSED USE - TRUCK TERMINAL
- 3) COVERAGE - N/A
- 4) HEIGHT RESTRICTION - 50' MAX BUILDING HEIGHT
- 5) PARKING PROVIDED - 1 SPACE PER EACH 2 EMPLOYEES = 14 SPACES
- 6) PARKING PROVIDED - 14 SPACES 10' X 20'
- 7) TOTAL NO EMPLOYEES - 28
- 8) TOTAL AREA OF SITE - 3.58 AC. ±
- 9) FINAL SUBDIVISION PLAT - HIGHWAY EXPRESS LINES INC. PARCEL 'B' PLAT BOOK 22 FOLIO 50
- 10) PUBLIC WATER & SEWERS TO BE UTILIZED.
- 11) ALL ON SITE PAVING TO BE IN ACCORDANCE WITH HOWARD COUNTY STANDARDS.
- 12) ENTRANCE TO MONTEVIDEO ROAD TO BE IN ACCORDANCE WITH HOWARD COUNTY STANDARDS.
- 13) SEE B/C CASE 680-C COVERING SETBACKS TO R-20 ZONES.
- 14) BASE WILL BE FRIED IN ACCORDANCE WITH SECTION C-30-3; HOWARD COUNTY ROAD CONSTRUCTION CODE & STANDARD SPECIFICATIONS.
- 15) TACK COAT IS TO BE IN ACCORDANCE WITH SECTION C-31-4 OF THE HOWARD COUNTY ROAD CONSTRUCTION CODE & STANDARD SPECIFICATIONS.



ENTRANCE DETAIL
NO SCALE



COMBINATION CURB & GUTTER
NO SCALE

SEDIMENT CONTROL NOTE

THIS DEVELOPMENT PLAN IS APPROVED FOR SOIL EROSION & SEDIMENT CONTROL BY THE HOWARD SOIL CONSERVATION DISTRICT.
REVIEWED *Philip A. Blazan* 4-11-72
J. HELM, DISTRICT CONSERVATIONIST DATE

APPROVED *Philip A. Blazan* 4-11-72
DATE

CERTIFICATION BY THE DEVELOPER: I CERTIFY THAT ALL THE DEVELOPMENT AND/OR CONSTRUCTION WILL BE DONE IN ACCORDANCE WITH THIS PLAN OF DEVELOPMENT & PLAN OF SILT & SEDIMENT CONTROL.
Philip A. Blazan DATE 4-13-72

- CONSTRUCTION NOTES:
1. AS SOON AS GRADING IS COMPLETED, PAVED AREA WILL BE STABILIZED WITH BASE MATERIAL.
 2. ALL CUT & FILL SLOPES WILL BE A MINIMUM OF 3:1.
 3. THE AREA OF THE SEDIMENT CONTROL MEASURES WILL BE THE LAST AREA TO BE GRADED & STABILIZED.
 4. ELEVATIONS MARKED "X" ARE FINISHED GRADE.
 5. IN THE EVENT OF EXCESS OF MATERIAL THE WASTE AREA WILL BE CLEARED, AND STRIPPED MATERIAL WILL BE DEPOSITED SO AS TO ALLOW MIN. EROSION. REFACE TOP MATERIAL & STABILIZE IN ACCORDANCE WITH NOTE # 9.
 6. THE H.S.C.D. WILL BE GIVEN 24 HOURS NOTICE PRIOR TO ANY GRADING.
 7. SEDIMENT CONTROL MEASURES WILL NOT BE REMOVED UNTIL APPROVAL IS OBTAINED FROM THE H.S.C.D.
 8. CONTRACTOR TO INSTALL TEMPORARY DIVERSION BERMS AT THE LOWER LIMIT OF GRADING AT THE END OF EACH DAY TO DIVERT STORM RUNOFF TO UNDISTURBED AREAS.
 9. PERMANENT STABILIZATION (ALL AREAS NOT PAVED)
APPLY: 2000 LBS/ACRE OF PLYWOOD MULCH WITH LIMESTONE.
1000 LBS/ACRE OF 0-30-0 LUMP FERTILIZER.
SEED: 65 LBS/ACRE OF KENTUCKY 31 TALL FESCUE.
80 LBS/ACRE OF KENTUCKY BLUE GRASS.
25 LBS/ACRE OF ANNUAL RYE GRASS.
NOTE: SEEDS MAY BE APPLIED BETWEEN MARCH 1ST - MAY 1ST OR AUG 1ST - OCT 1ST ONLY.
MULCH: 2 TONS/ACRE OF UNWEATHERED WHEATSTRAW, TIE MULCH DOWN WITH 100 GAL/ACRE OF LIQUID ASPHALT.

OWNER & DEVELOPER
SHULMAN TRANSPORT ENTERPRISES
20 OLNEY AVE. CHERRY HILL, N.J. 08034
TELEPHONE: (609) 424-2600

Philip A. Blazan 1/13/72

SITE DEVELOPMENT PLAN
SHULMAN AIR FREIGHT INC.
PLANNING

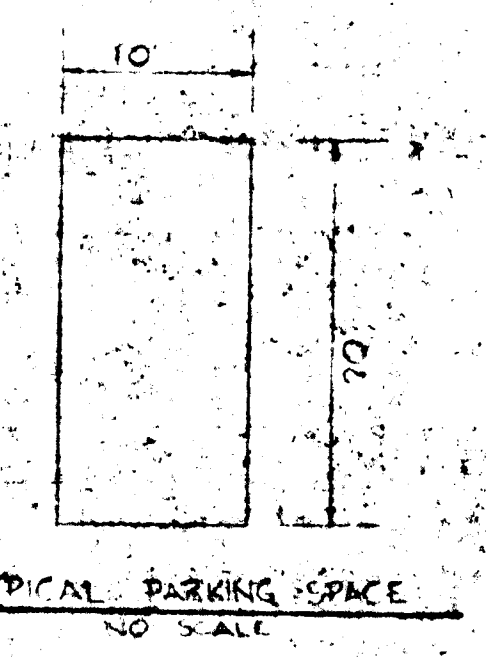
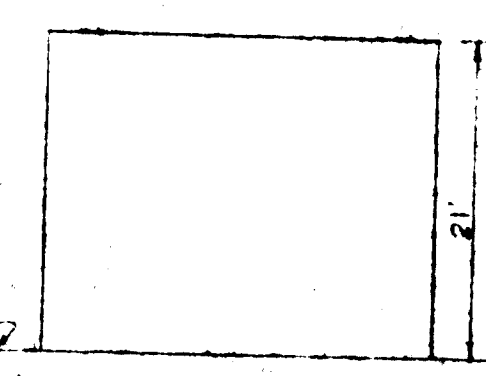
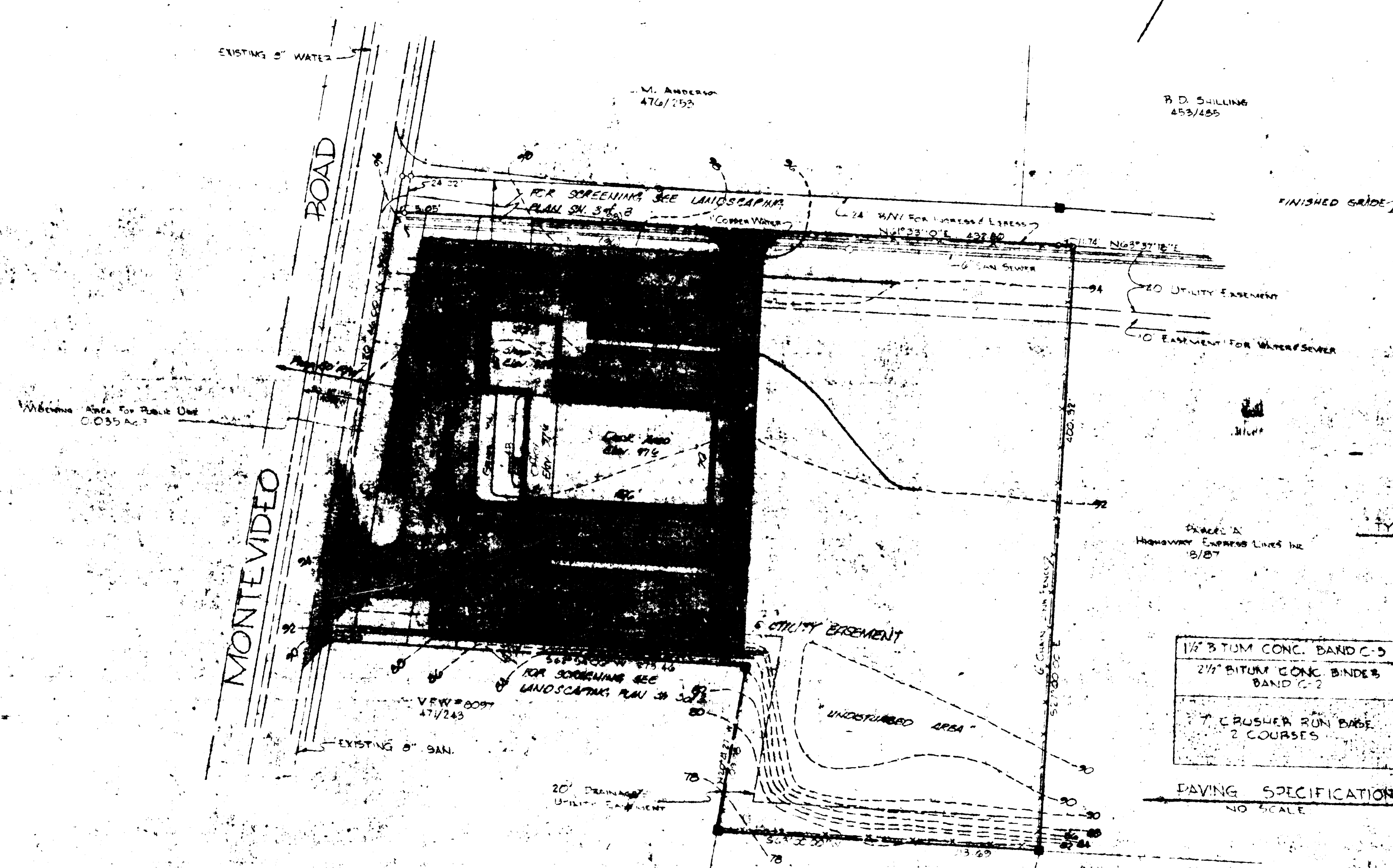
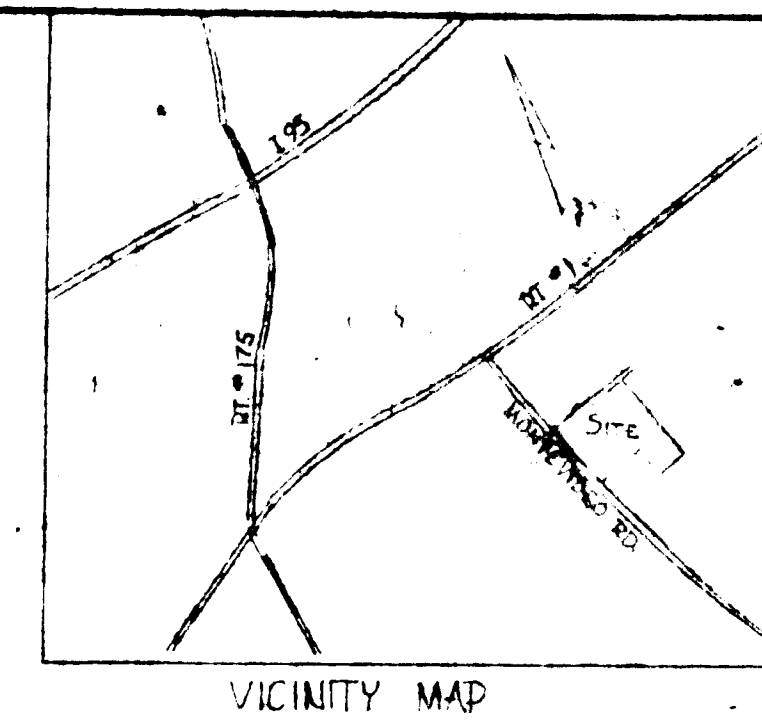
APPROVED FOR PUBLIC WATER AND PUBLIC SEWERAGE SYSTEMS
 HOWARD COUNTY HEALTH DEPARTMENT
 J. J. Hagan, MD 1/12/73
 COUNTY HEALTH OFFICER

APPROVED HOWARD COUNTY OFFICE OF PLANNING & ZONING
 1-13-73
 PLANNING DIRECTOR DATE
 CHIEF, DIVISION OF LAND DEVELOPMENT AND TRANSPORTATION PLANNING

APPROVED FOR PUBLIC WATER, PUBLIC SEWERAGE AND STORM DRAINAGE SYSTEMS AND ROADS

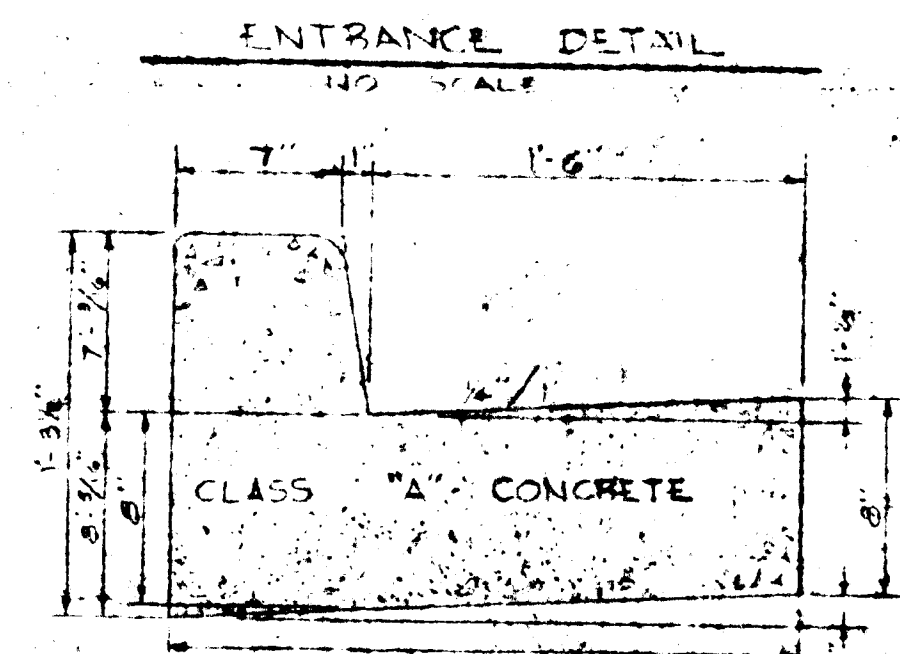
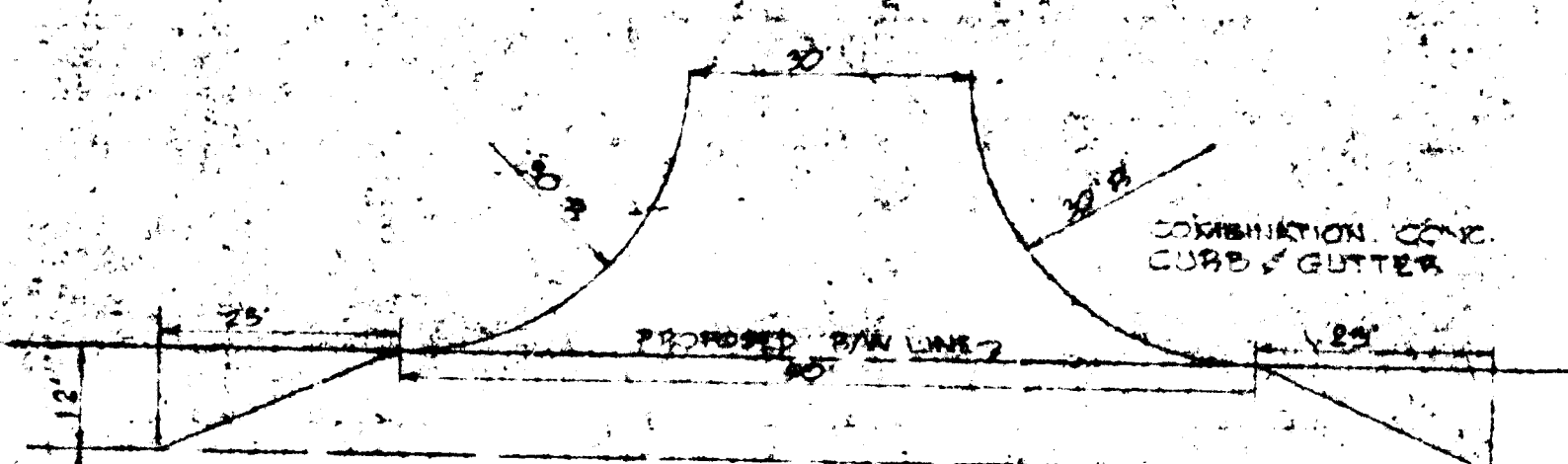
W. A. Ault 1/12/73
 DIRECTOR DATE
 C. S. Wilkins 1/12/73
 CHIEF, BUREAU OF HIGHWAYS

APPROVED FOR PUBLIC WATER AND PUBLIC SEWERAGE SYSTEMS
 HOWARD COUNTY HEALTH DEPARTMENT
 11/9/72



PAVING SPECIFICATIONS
 NO SCALE
 1 1/2" BITUM CONC. BAND C-5
 2 1/4" BITUM CONC. BANDS BAND C-2
 7" CRUSHER RUN BASE 2 COURSES

- GENERAL NOTES
- 1 ZONING - R-1.2
 - 2 PROPOSED USE - TRUCK TERMINAL
 - 3 COVERAGE - N/A
 - 4 HEIGHT RESTRICTION - 50' MAX. BUILDING HEIGHT
 - 5 PARKING REQUIRED - 1 SPACE PER EACH 2 EMPLOYEES + 14 SPACES
 - 6 PARKING PROVIDED - 14 SPACES 10' X 20'
 - 7 TOTAL NO. EMPLOYEES - 28
 - 8 TOTAL AREA OF SITE - 3.50 AC. ±
 - 9 FINAL SUBDIVISION PLAT - HIGHWAY EXPRESS LINES INC. PARCEL 5 PLAT BOOK 22 FOLIO 50
 - 10 PUBLIC WATER & SEWER TO BE UTILIZED
 - 11 ALL ON SITE PAVING TO BE IN ACCORDANCE WITH HOWARD COUNTY STANDARDS
 - 12 ENTRANCE TO MONTEVIDEO ROAD TO BE IN ACCORDANCE WITH HOWARD COUNTY STANDARDS
 - 13 SEE 8-A CASE 680-C COVERING SETBACKS TO R-20 ZONES
 - 14 BASE WILL BE PRIMED IN ACCORDANCE WITH SECTION C-30.3 HOWARD COUNTY ROAD CONSTRUCTION CODE STANDARD SPECIFICATIONS
 - 15 TAXI COAT IS TO BE IN ACCORDANCE WITH SECTION C-31.4 OF THE HOWARD COUNTY ROAD CONSTRUCTION CODE STANDARD SPECIFICATIONS



SEDIMENT CONTROL NOTE

THIS DEVELOPMENT IS APPROVED FOR SOIL EROSION & SEDIMENT CONTROL BY THE N.J. DISTRICT COURT ON 11-17-72

REVIEWED BY: [Signature] DATE: 11-17-72

APPROVED BY: [Signature] DATE: 4-13-73

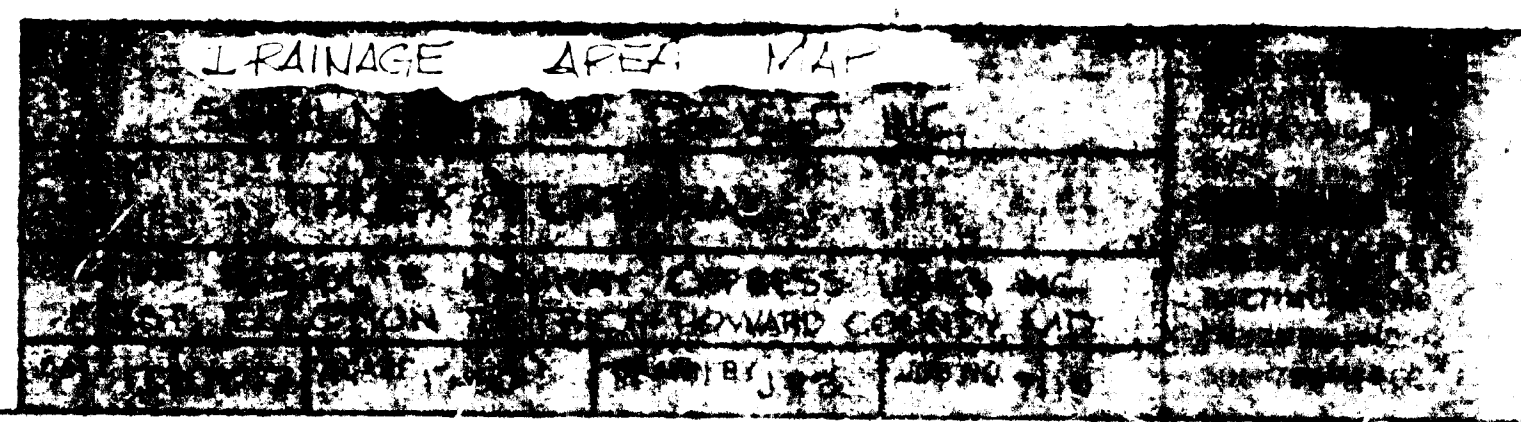
CERTIFICATION BY THE DEVELOPER: I CERTIFY THAT ALL THE DEVELOPMENT AND/OR CONSTRUCTION WILL BE DONE IN ACCORDANCE WITH THIS PLAN OF DEVELOPMENT, PLAN OF SOIL & SEDIMENT CONTROL.

Agent DATE: 4-13-72

CONSTRUCTION NOTES

- 1 AS SOON AS ROAD IS COMPLETED ROAD WORK WILL BE STOPPED WITH BASE MATERIAL.
- 2 ALL CUT & FILL AREAS WILL BE A MINIMUM OF 2:1.
- 3 THE AREA OF THE SEDIMENT CONTROL MEASURES WILL BE THE LAST AREA TO BE GRADED & STABILIZED.
- 4 ALL EROSION CONTROL MEASURES (E.C.M.) ARE TO BE MAINTAINED THROUGHOUT CONSTRUCTION.
- 5 IN THE EVENT OF A RAINFALL OF 0.50" OR MORE, THE EROSION CONTROL MEASURES WILL BE MAINTAINED AND STRIPPED.
- 6 THE N.J. S.C.D. WILL BE ADVISED BY THE DEVELOPER OF ANY CHANGES TO THE E.C.M. MEASURES.
- 7 SEDIMENT CONTROL MEASURES WILL BE MAINTAINED UNTIL APPROVAL IS OBTAINED FROM THE N.J. S.C.D.
- 8 CONTRACTOR TO MAINTAIN TEMPORARY EROSION CONTROL MEASURES AT THE LOWER LIMIT OF GRADING AT THE END OF EACH DAY TO PREVENT STORM RUNOFF FROM DISTURBED AREAS.
- 9 PERMANENT STABILIZATION SHALL BE APPLIED TO ALL AREAS NOT COVERED BY EROSION CONTROL MEASURES.
- 10 100 LB. BAGS OF PERMANENT STABILIZATION SHALL BE APPLIED TO ALL AREAS NOT COVERED BY EROSION CONTROL MEASURES.
- 11 40 LB. BAGS OF PERMANENT STABILIZATION SHALL BE APPLIED TO ALL AREAS NOT COVERED BY EROSION CONTROL MEASURES.
- 12 20 LB. BAGS OF PERMANENT STABILIZATION SHALL BE APPLIED TO ALL AREAS NOT COVERED BY EROSION CONTROL MEASURES.
- 13 10 LB. BAGS OF PERMANENT STABILIZATION SHALL BE APPLIED TO ALL AREAS NOT COVERED BY EROSION CONTROL MEASURES.
- 14 5 LB. BAGS OF PERMANENT STABILIZATION SHALL BE APPLIED TO ALL AREAS NOT COVERED BY EROSION CONTROL MEASURES.
- 15 2.5 LB. BAGS OF PERMANENT STABILIZATION SHALL BE APPLIED TO ALL AREAS NOT COVERED BY EROSION CONTROL MEASURES.
- 16 1.25 LB. BAGS OF PERMANENT STABILIZATION SHALL BE APPLIED TO ALL AREAS NOT COVERED BY EROSION CONTROL MEASURES.
- 17 0.625 LB. BAGS OF PERMANENT STABILIZATION SHALL BE APPLIED TO ALL AREAS NOT COVERED BY EROSION CONTROL MEASURES.
- 18 0.3125 LB. BAGS OF PERMANENT STABILIZATION SHALL BE APPLIED TO ALL AREAS NOT COVERED BY EROSION CONTROL MEASURES.
- 19 0.15625 LB. BAGS OF PERMANENT STABILIZATION SHALL BE APPLIED TO ALL AREAS NOT COVERED BY EROSION CONTROL MEASURES.
- 20 0.078125 LB. BAGS OF PERMANENT STABILIZATION SHALL BE APPLIED TO ALL AREAS NOT COVERED BY EROSION CONTROL MEASURES.

OWNER & DEVELOPER
 SHULMAN TRANSPORT ENTERPRISES
 20 OLNEY AVE. CHERRY HILL, N.J. 08034
 TELEPHONE: (609) 424-2600



APPROVED FOR PUBLIC WATER, PUBLIC SEWERAGE SYSTEMS
 HOWARD COUNTY HEALTH DEPARTMENT
J. B. ... 1/14/73
 COUNTY HEALTH OFFICER DATE

APPROVED: HOWARD COUNTY OFFICE OF PLANNING & ZONING
Thomas ... 1-18-73
 PLANNING DIRECTOR DATE

CHIEF DIVISION OF LAND DEVELOPMENT AND TRANSPORTATION PLANNING
 DATE

APPROVED: FOR PUBLIC WATER, PUBLIC SEWERAGE AND STORM DRAINAGE SYSTEMS AND ROADS
William A. ... 1/14/73
 DIRECTOR DATE

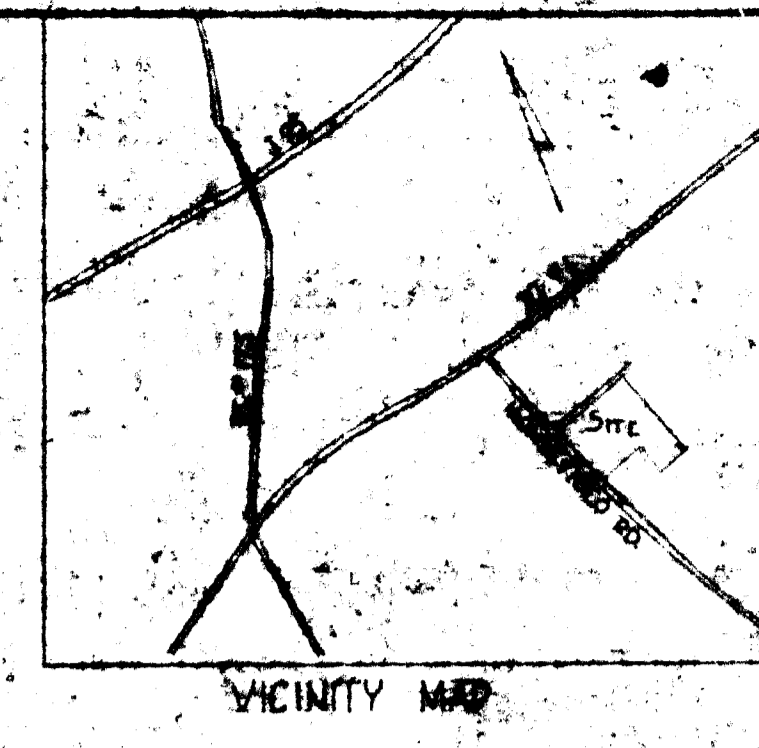
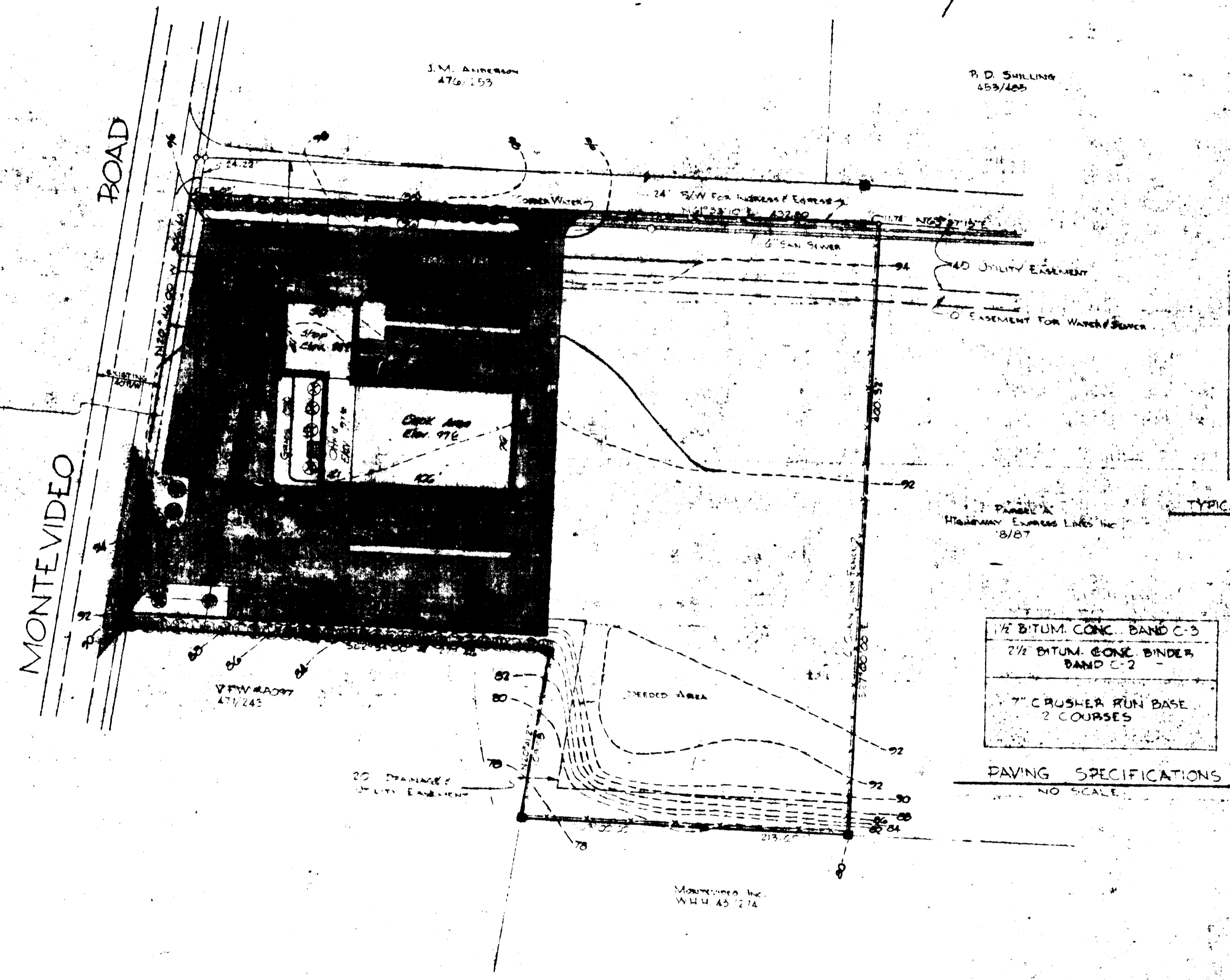
W. O. ... 1-26-73
 CHIEF BUREAU OF HIGHWAYS DATE

APPROVED
 DIVISION OF LAND DEVELOPMENT AND TRANSPORTATION PLANNING
 HOWARD COUNTY, MARYLAND
 DATE NOVEMBER 9, 1972

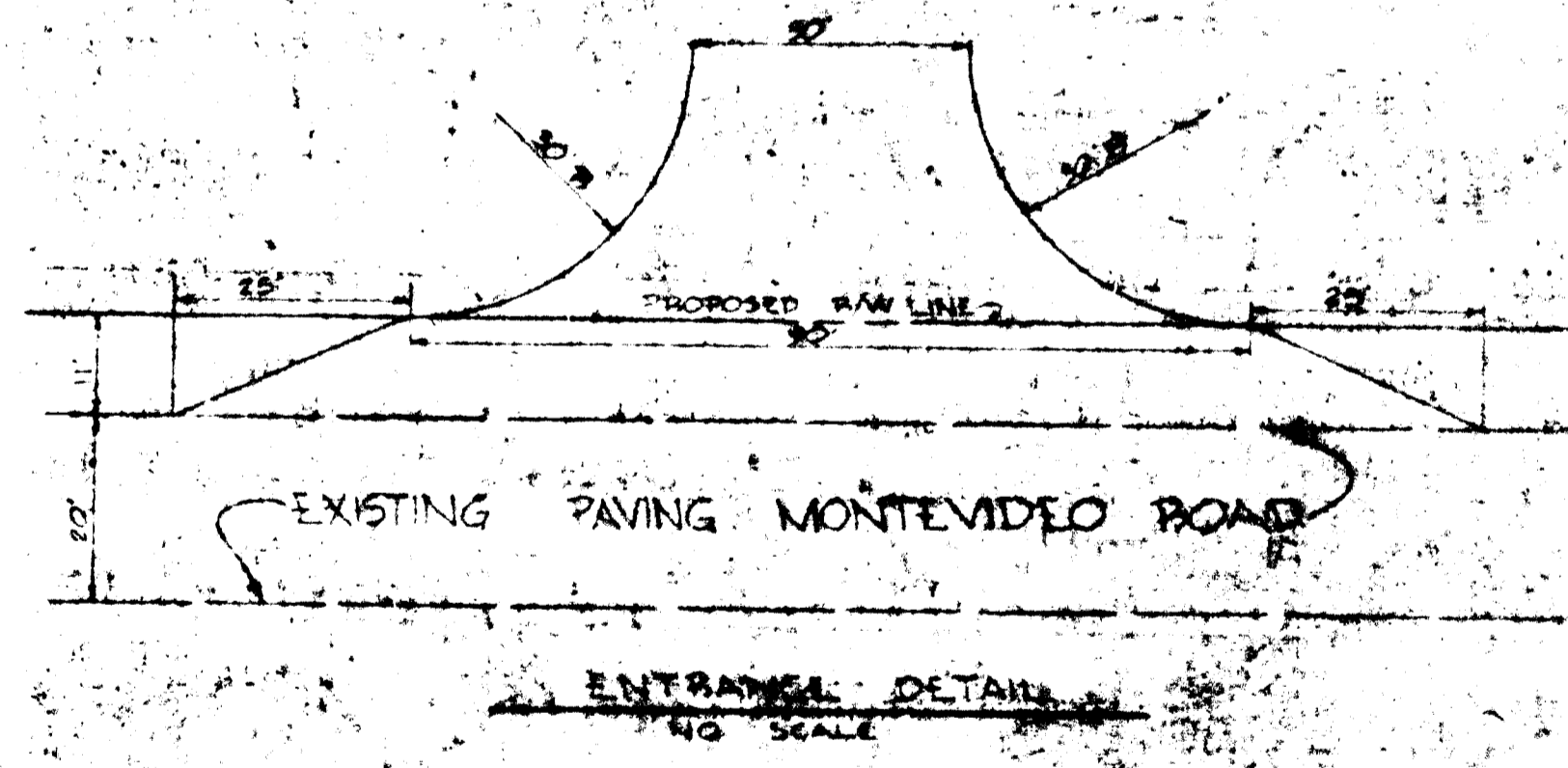
PLANTING SCHEDULE

WATER SYMBOL	PLANT NAME	SIZE	QUANTITY	REMARKS
⊗	White Pine		60	
⊗	...		4	

* PLANTING TO BE COMPLETED BY FALL 1973



- GENERAL NOTES**
- 1) ZONING - M-2
 - 2) PROVIDED USE - TRUCK TERMINAL
 - 3) COVERAGE - 75%
 - 4) HEIGHT RESTRICTION - 30' MAX. SIGNAGE HEIGHTS
 - 5) SIGNAGE PROVIDED - 1 SIGN ON W. SIDE & 1 SIGN ON N. SIDE
 - 6) PARKING PROVIDED - 17 SPACES 10' X 20'
 - 7) TOTAL # EMPLOYEES - 25
 - 8) TOTAL AREA OF SITE - 8.88 AC.
 - 9) FINAL SUBDIVISION PLAN HIGHWAY EXPRESS LINES INC. PARCEL # 7 PART 80077-10100 80
 - 10) PUBLIC UTILITIES SHALL BE UTILIZED
 - 11) ALL ON SITE WORK SHALL BE IN ACCORDANCE WITH HOWARD COUNTY STANDARDS
 - 12) ENTRANCE TO MONTEVIDEO ROAD TO BE IN ACCORDANCE WITH HOWARD COUNTY STANDARDS
 - 13) SEE B-A CASE 600-C COVERING SETBACKS TO R-1 ZONES



OWNER & DEVELOPER
 SHULMAN TRANSPORT ENTERPRISES
 20 OLNEY AVE. CHERRY HILL, N.J. 08054
 TELEPHONE: (609) 424-2600

Philip A. Pappalardo 11/6/72



PROPOSED TRUCK TERMINAL
 SHULMAN TRANSPORT ENTERPRISES
 20 OLNEY AVE. CHERRY HILL, N.J. 08054
 TELEPHONE: (609) 424-2600