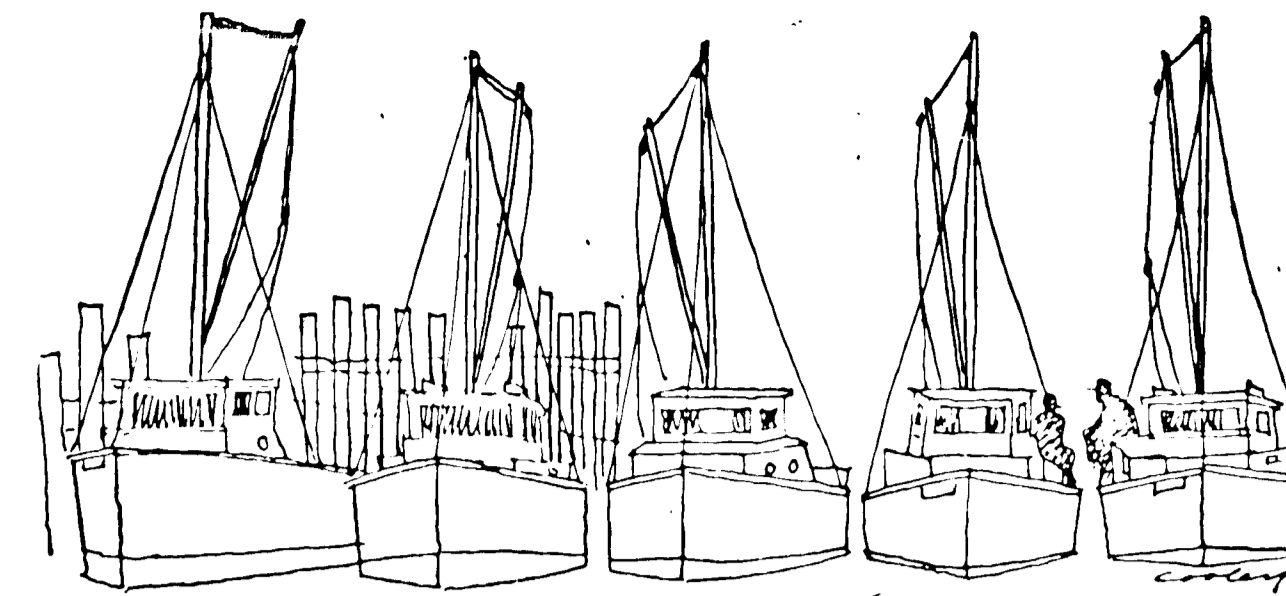
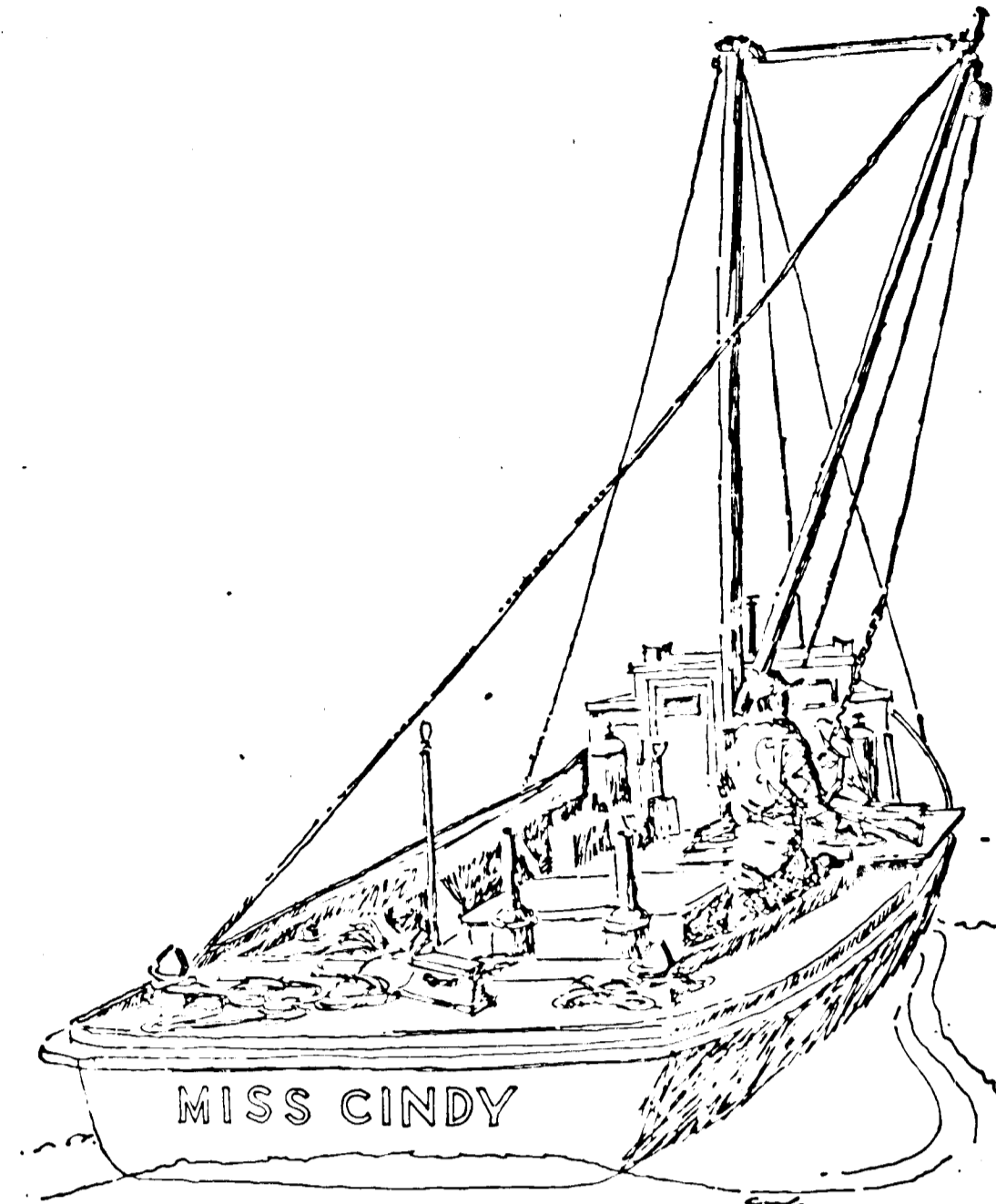


VICINITY MAP
SCALE 1"=2000'

LIST OF DRAWINGS

SHEET NO.	TITLE
S-1	COVER SHEET
S-2	SITE & GRADING PLAN
S-3	SITE & GRADING PLAN
S-4	SITE IMPROVEMENT DETAILS
S-5	BUILDING LOCATION PLAN
S-6	BUILDING LOCATION PLAN
S-7	DRIVEWAY PROFILES
S-8	DRIVEWAY PROFILES
S-9	STORM DRAIN PROFILES
SCS-1	SEDIMENT CONTROL PLAN
SCS-2	SEDIMENT CONTROL PLAN
SCS-3	SEDIMENT CONTROL PLAN
SCS-4	SEDIMENT CONTROL PLAN



Oyster tonging on the Chesapeake Bay at the peak of the winter season seems as ageless—and as ingrained in Maryland folklore—as the Eastern Shore itself.



SECTION THREE

WHISKEY BOTTOM

APARTMENTS

SIXTH ELECTION DISTRICT, HOWARD COUNTY, MARYLAND

<p>HOWARD COUNTY HEALTH DEPT. PUBLIC WATER AND SEWER SYSTEMS</p> <p>APPROVED: <i>[Signature]</i> 1-11-72 COUNTY HEALTH OFFICER</p>	<p>THIS DEVELOPMENT PLAN IS APPROVED FOR SOIL EROSION AND SEDIMENT CONTROL BY THE HOWARD COUNTY SOIL CONSERVATION DISTRICT.</p> <p>REVIEWED: 9-1-72 DATE</p> <p><i>[Signature]</i> DISTRICT CONSERVATIONIST</p> <p>APPROVED: 9-1-72 DATE</p> <p><i>[Signature]</i> NONAID SOIL CONSERVATION DISTRICT</p>
<p>HOWARD COUNTY OFFICE OF PLANNING AND ZONING</p> <p>APPROVED: 9-11-72 DATE</p> <p><i>[Signature]</i> PLANNING DIRECTOR</p>	
<p>HOWARD COUNTY DEPARTMENT OF PUBLIC WORKS PUBLIC WATER, SEWER, AND STORM DRAINAGE SYSTEMS AND ROADS</p> <p>APPROVED: 9/16/72 DATE</p> <p><i>[Signature]</i> William A. Altman DIRECTOR</p> <p><i>[Signature]</i> W. H. Haskland CHIEF, BUREAU OF HIGHWAYS</p>	

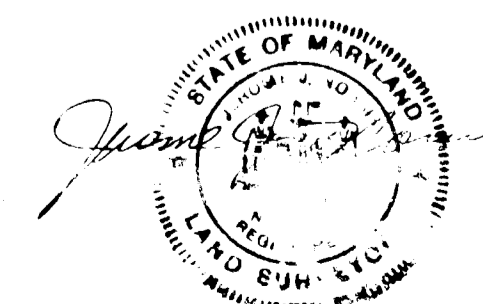
APPROVED
PLANNING BOARD
OF HOWARD COUNTY

DATE 9/28/72
[Signature] ARCHITECT

OWNER AND DEVELOPER
RONALD S. SENSEMAN, FAIA
7676 NEW HAMPSHIRE AVENUE
LANGLEY PARK, MD. 20783

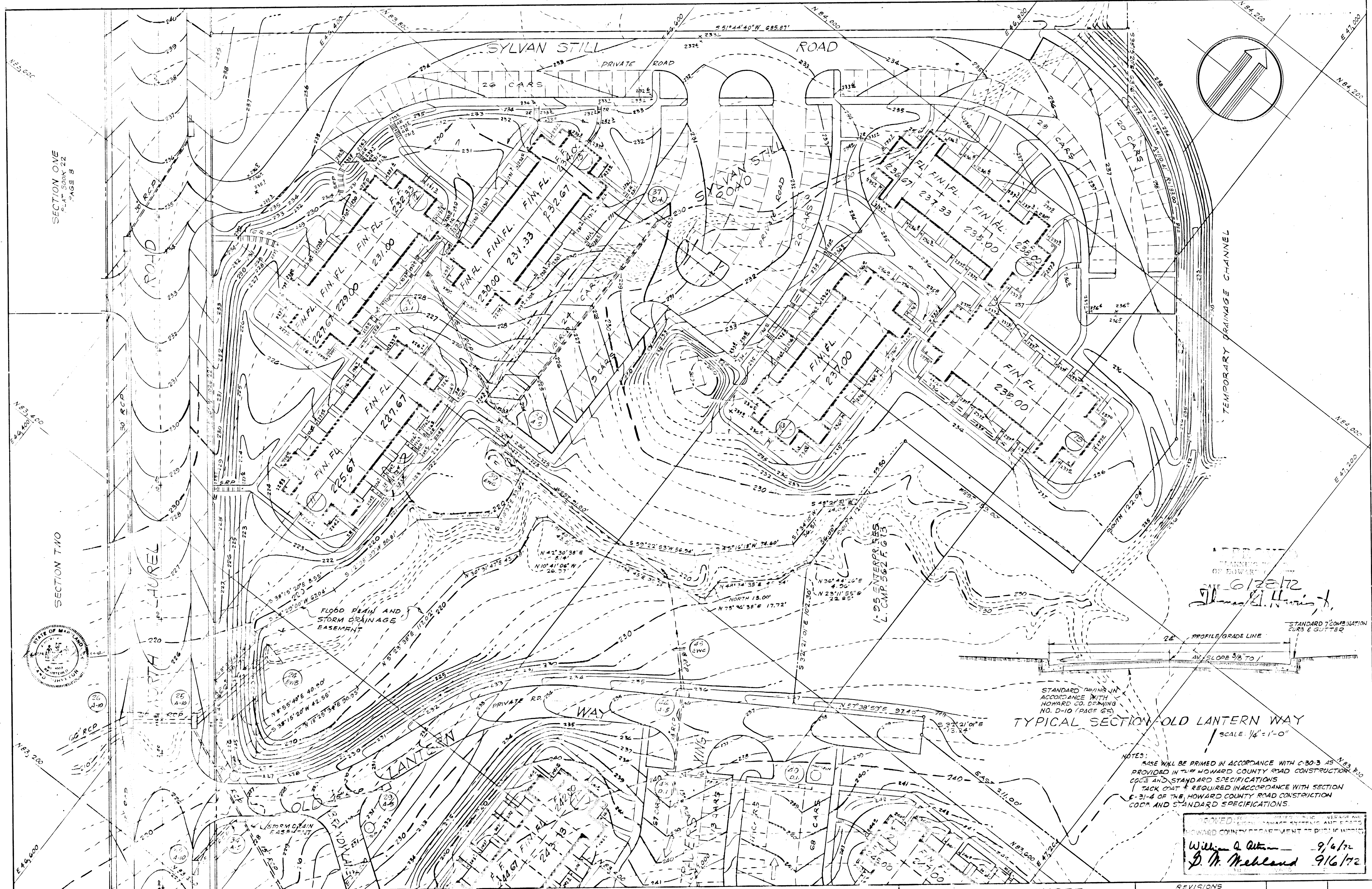
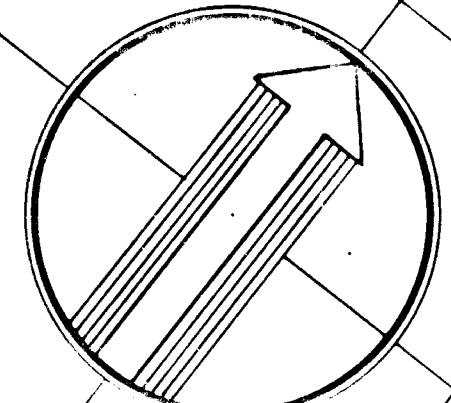
OWNER AND DEVELOPER
WHISKEY BOTTOM SECTION THREE
1720 WISCONSIN AVENUE, N.W.
WASHINGTON, D.C. 20007

JEROME J. NORRIS AND ASSOCIATES
LAND PLANNING - HOUSING CONSULTANTS
6001 32ND STREET, N.W.
WASHINGTON, D.C. 20015



SECTION ONE
SHEET 800X 22
PAGE 8

SECTION TWO



DATE 6/22/72
THOMAS H. HARRIS, JR.

TYPICAL SECTION OLD LANTERN WAY
SCALE 1/4" = 1'-0"

NOTES:
BASE WILL BE PRIMED IN ACCORDANCE WITH C-30-3 AS PROVIDED IN THE HOWARD COUNTY ROAD CONSTRUCTION CODE AND STANDARD SPECIFICATIONS
TACK COAT IS REQUIRED IN ACCORDANCE WITH SECTION C-31-4 OF THE HOWARD COUNTY ROAD CONSTRUCTION CODE AND STANDARD SPECIFICATIONS.

APPROVED: WILLIAM A. ALTON
D. M. MEHLAND
9/6/72
9/16/72

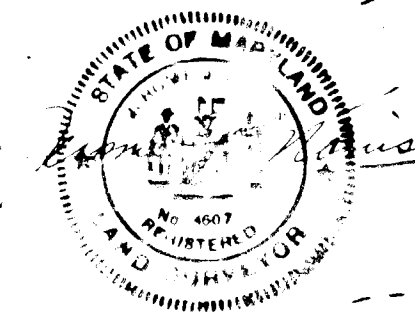
REVISIONS	SCALE: 1" = 30'	DRAWING No. S-2
	JULY 3, 1972	OF 13

JEROME J. NORRIS & ASSOCIATES
LAND PLANNING - HOUSING CONSULTANTS
6001 32ND STREET, N.W.
WASHINGTON, D.C.

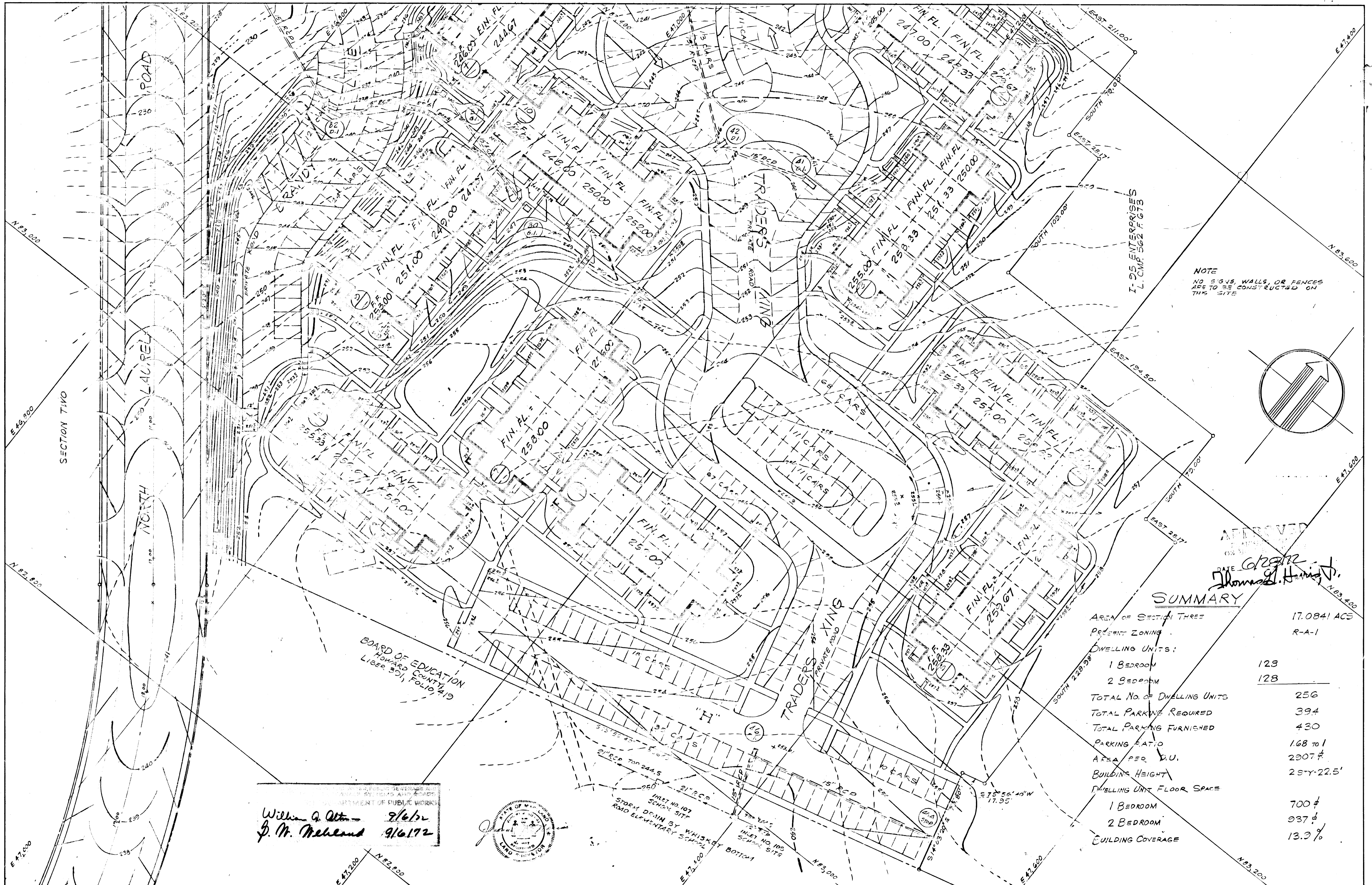
WHISKEY BOTTOM APARTMENTS

SIXTH ELECTION DISTRICT
HOWARD COUNTY MARYLAND

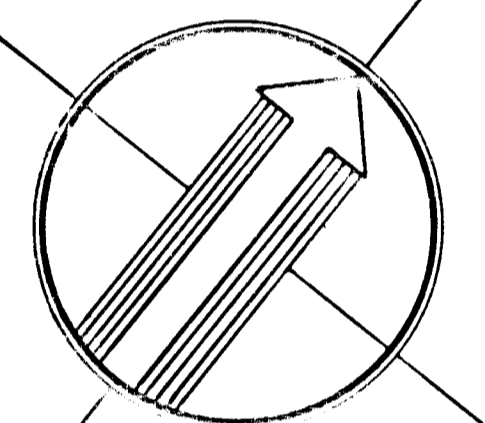
SECTION THREE SITE & GRADING PLAN



INTRO. SHEET
SHEET 800X 22
PAGE 8



NOTE
NO SIGNS, WALLS, OR FENCES
ARE TO BE CONSTRUCTED ON
THIS SITE



APPROVED
DATE 6/28/72
THOMAS G. HUNTER

SUMMARY

AREA OF SECTION THREE	17.0841 ACS
PRESENT ZONING	R-A-1
DWELLING UNITS:	
1 BEDROOM	128
2 BEDROOM	128
TOTAL NO. OF DWELLING UNITS	256
TOTAL PARKING REQUIRED	394
TOTAL PARKING FURNISHED	430
PARKING RATIO	1.68 TO 1
AREA PER D.U.	2307 #
BUILDING HEIGHT	25'-0" TO 22'-5"
DWELLING UNIT FLOOR SPACE	
1 BEDROOM	700 #
2 BEDROOM	937 #
BUILDING COVERAGE	13.3 %

William A. Altman 9/6/72
S. M. Meland 9/6/72

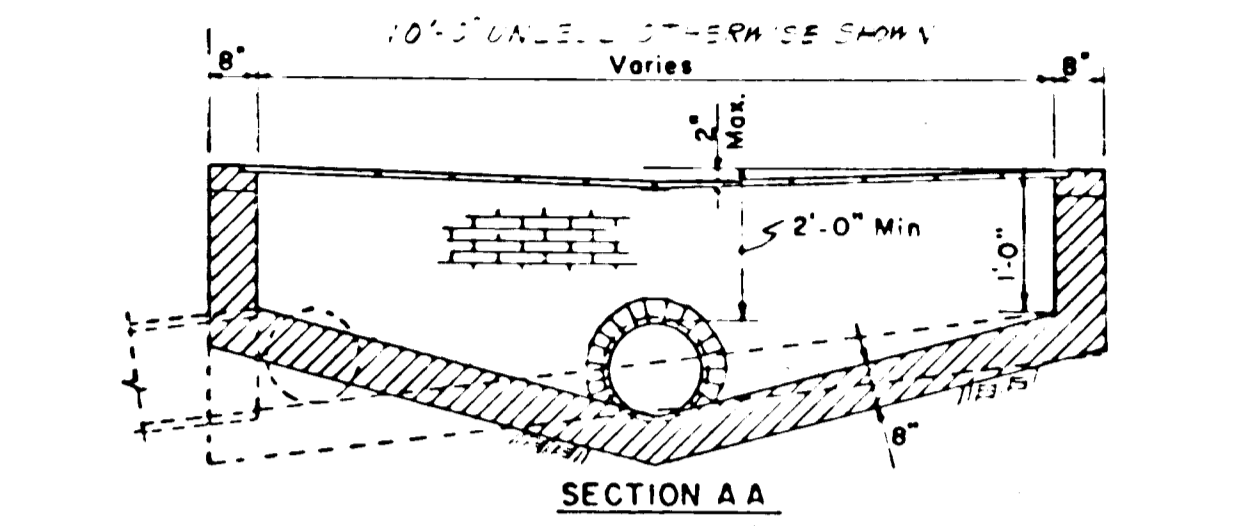
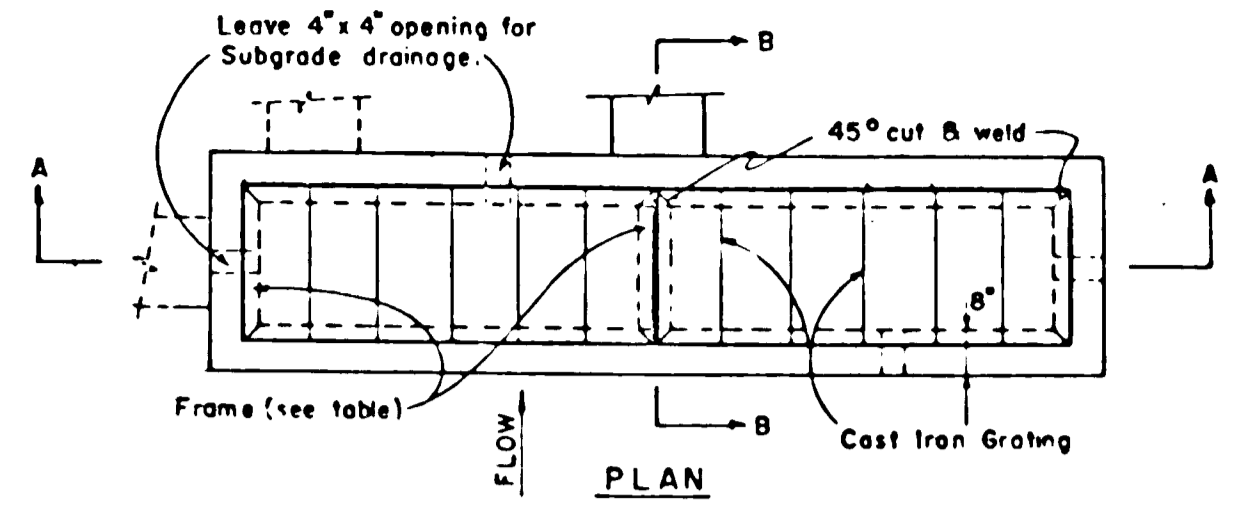
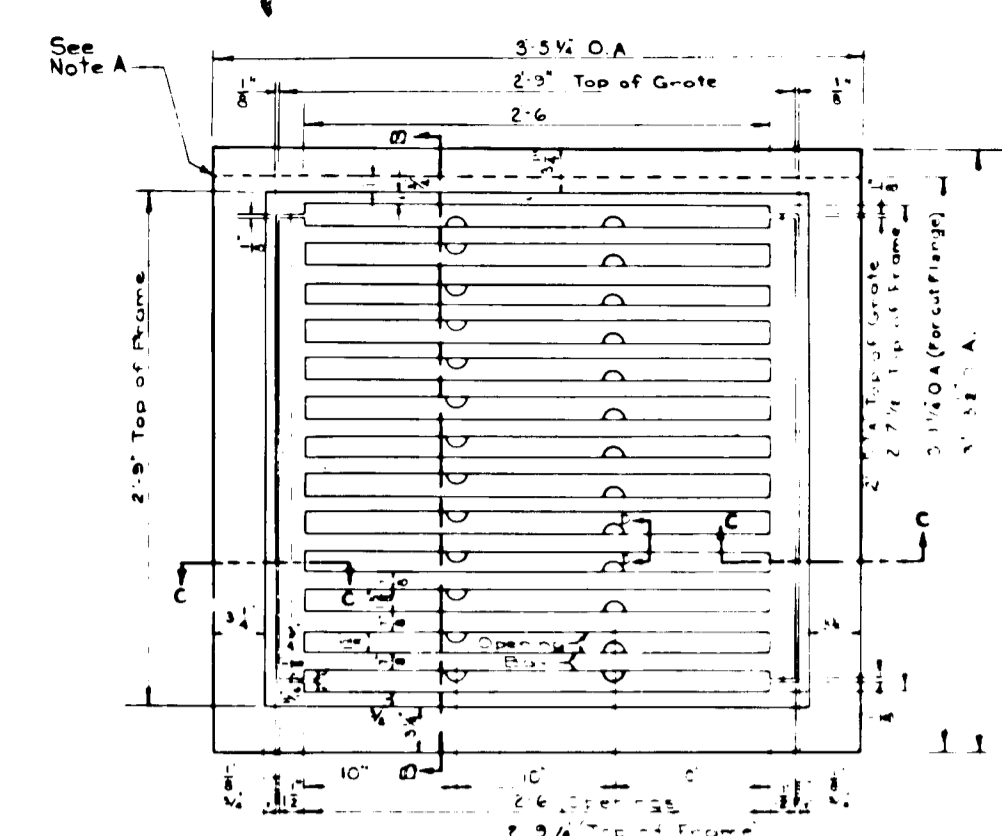
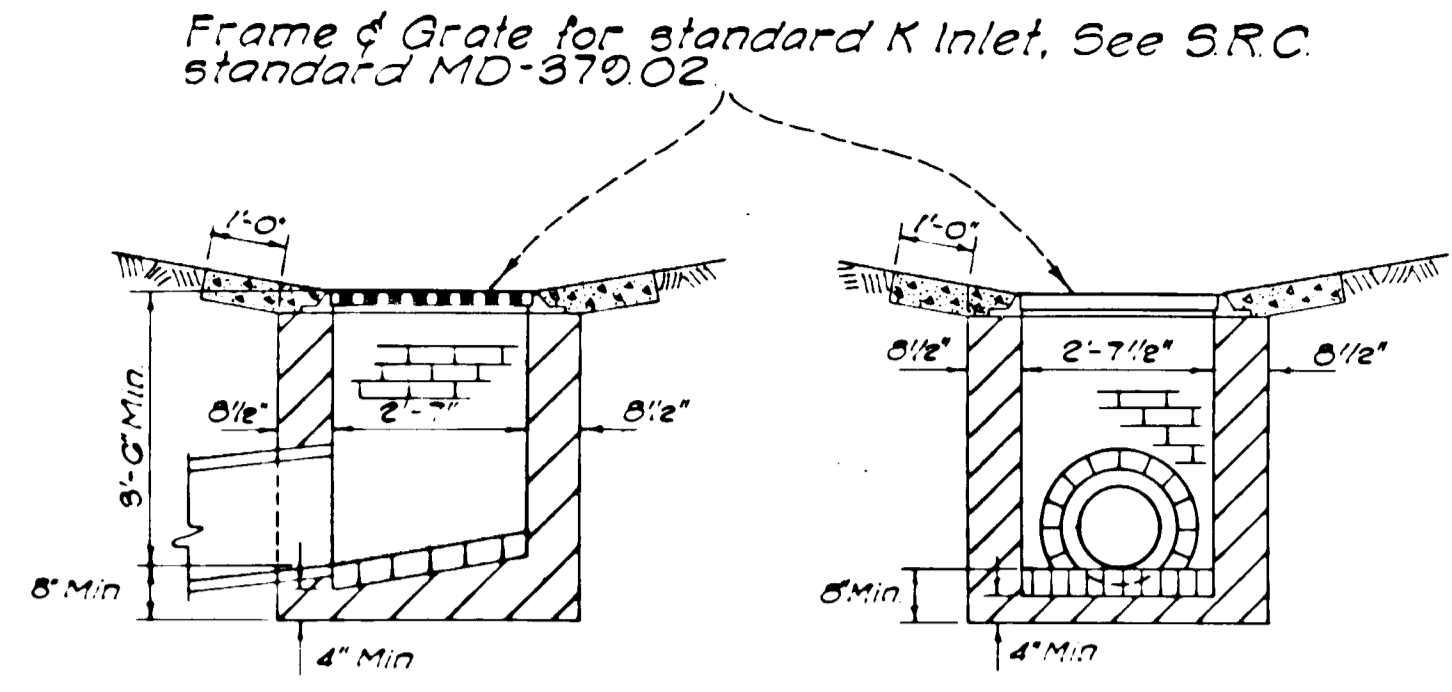
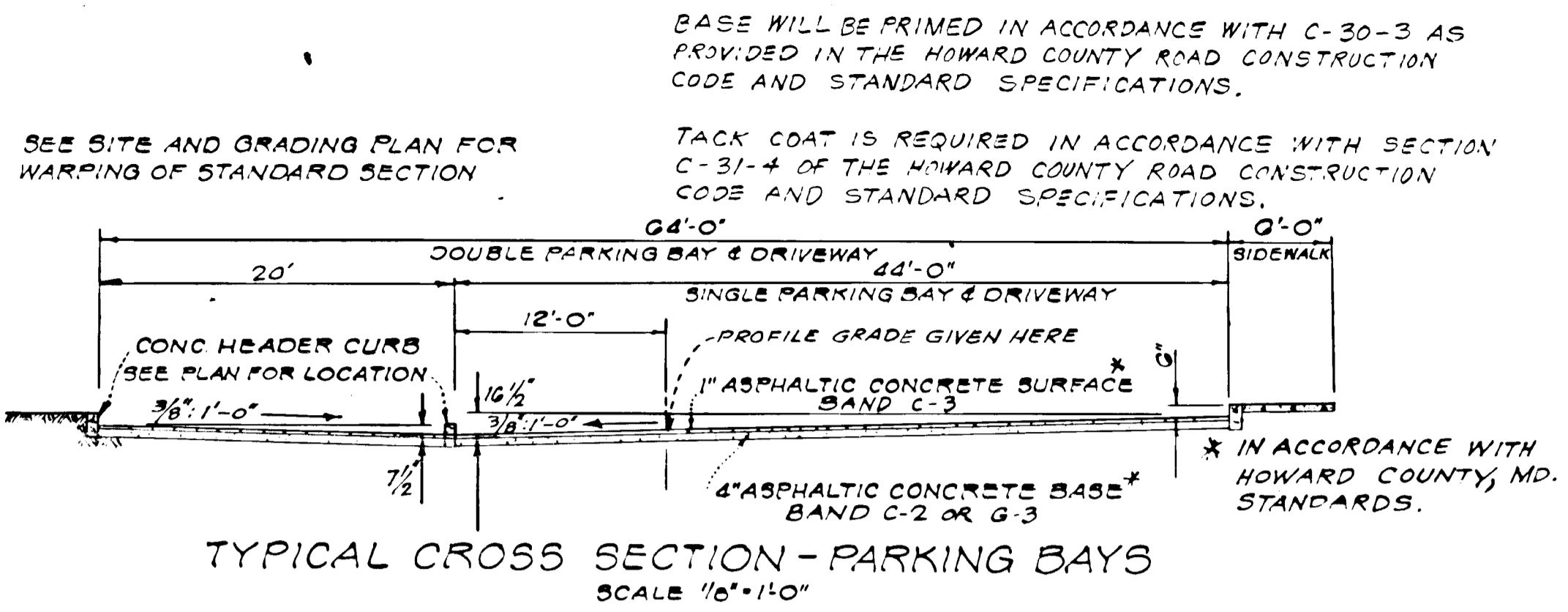


JEROME J. NORRIS & ASSOCIATES
LAND PLANNING - HOUSING CONSULTANTS
6001 32ND STREET, N.W.
WASHINGTON, D.C.

WHISKEY BOTTOM APARTMENTS
SIXTH ELECTION DISTRICT
HOWARD COUNTY MARYLAND

SECTION THREE
SITE & GRADING PLAN

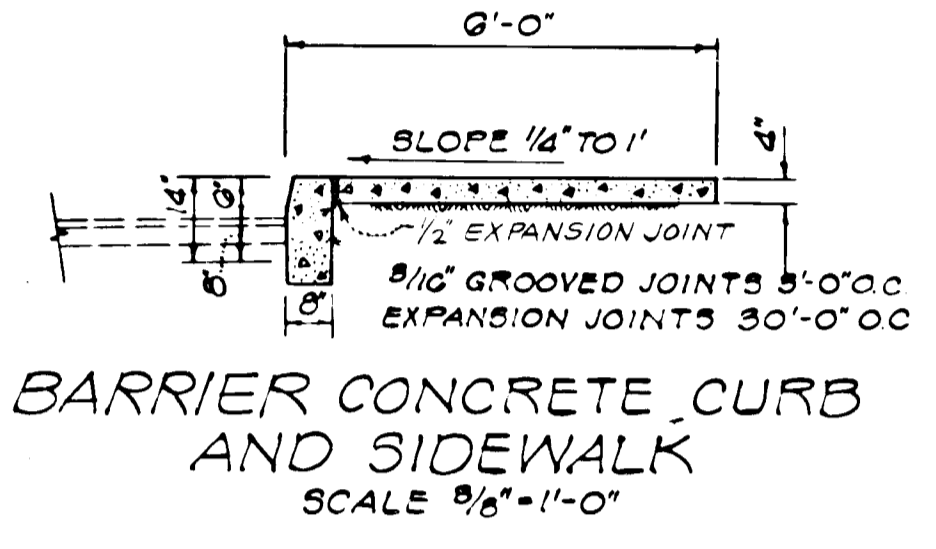
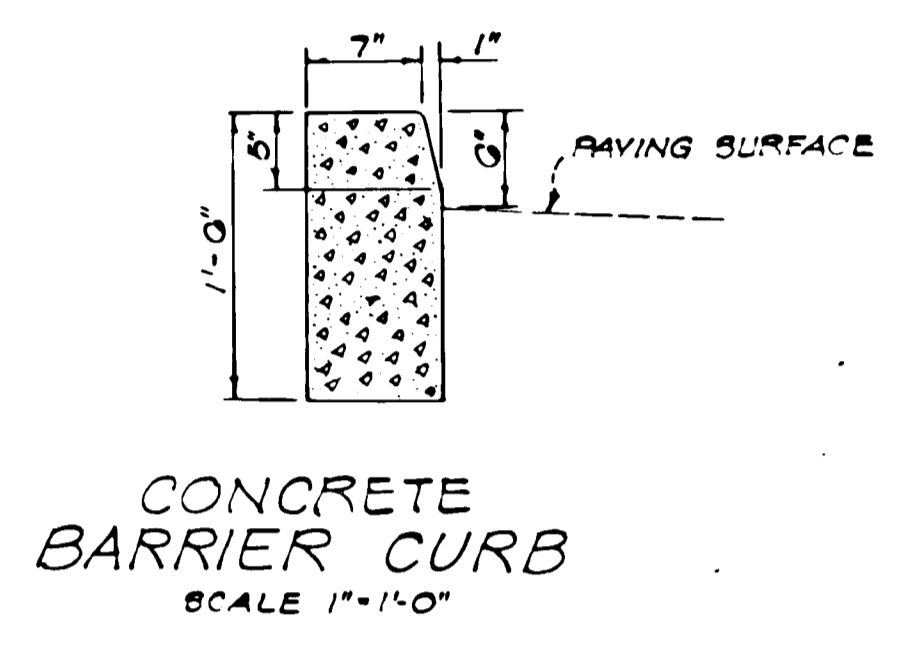
REVISIONS	SCALE: 1"=30'	DRAWING No. S-3
	JULY 3, 1972	OF 13



Notes:

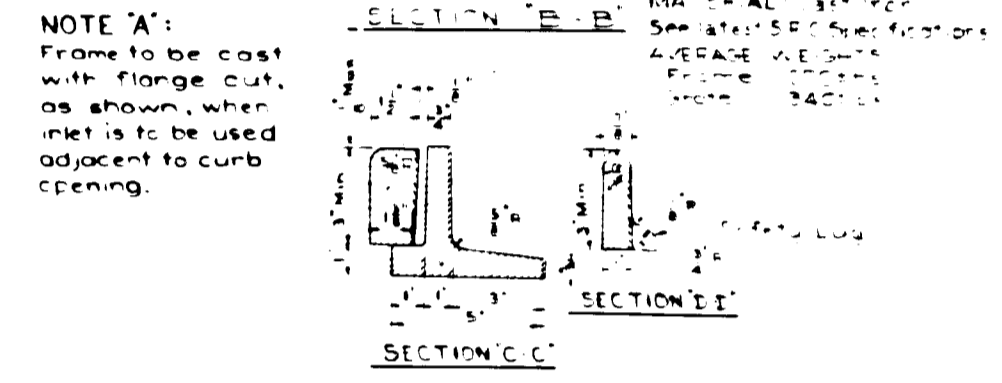
- Invert shall be brick or plain Class A concrete masonry
- Top 4" of walls shall be brick masonry
- Maximum depth of wall shall be 3'-6" where outlet pipe requires greater depth, drop section shall be formed around pipe
- Invert shall be brick laid on edge

W	X	Y	FRAME ANGLES
S 3'	2'-9"	2'-7"	3 1/2 x 2 1/2 x 3 1/2
A 2 1/2'	2'-2"	1'-9"	3 1/2 x 2 1/2 x 3 1/2
B 1 3/4'	1'-5"	1'-0"	2 x 2 1/2 x 3 1/2

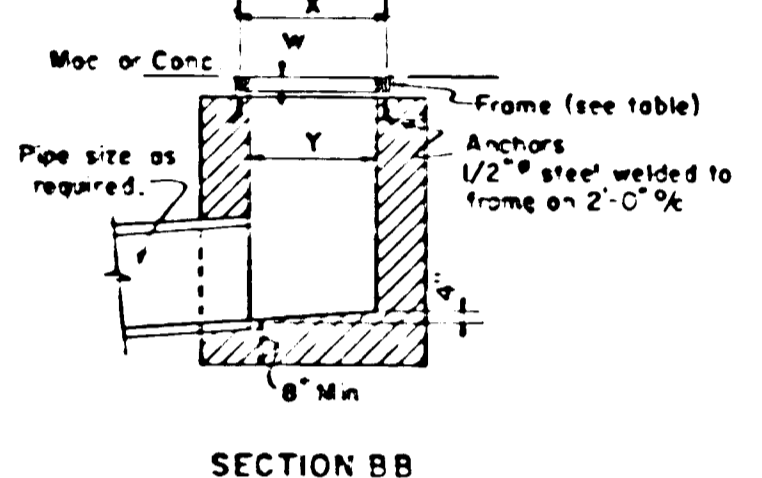


- Inlet may be constructed of standard concrete block or brick. Size, type & direction of inlet connection will vary to suit conditions
- Top 4" of walls may be brick masonry. Additional brick may be used to bring the grate to grade if required.
- Brick for masonry to comply with latest SRC specifications
- Invert may be plain concrete or 4" brick laid on edge. Invert to slope down toward outlet at the rate of two (2) inches per foot, or as directed.
- See Md SRC standard MD-378.01 for information not shown hereon.

SPECIAL GRADE INLET
SCALE: 3/8"=1'-0"

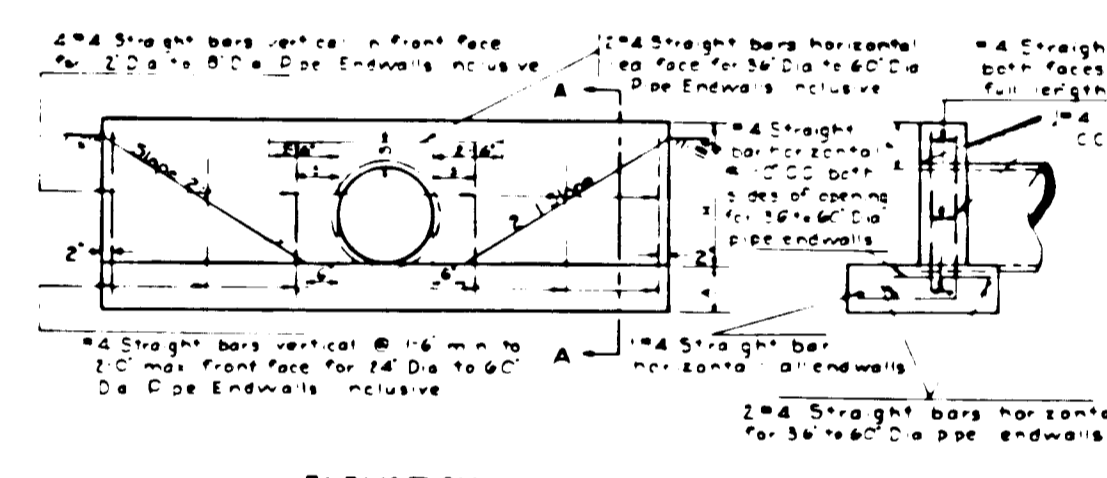
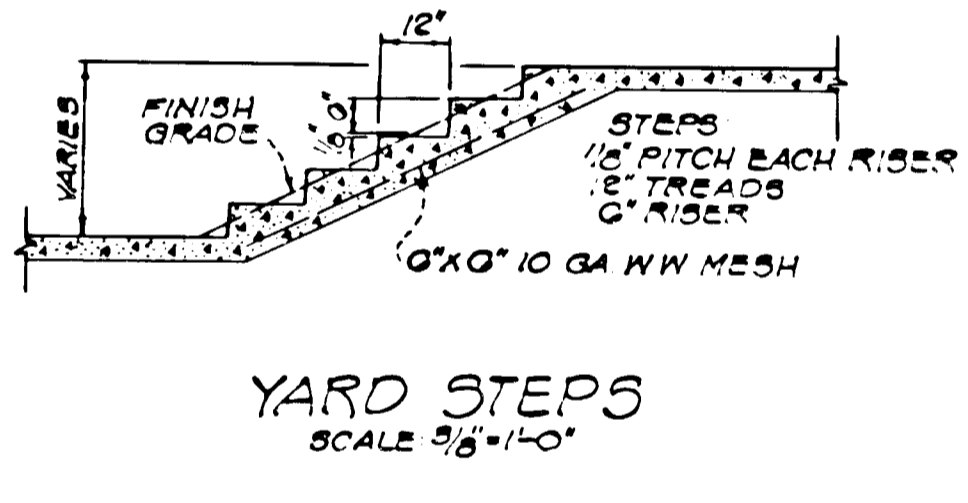
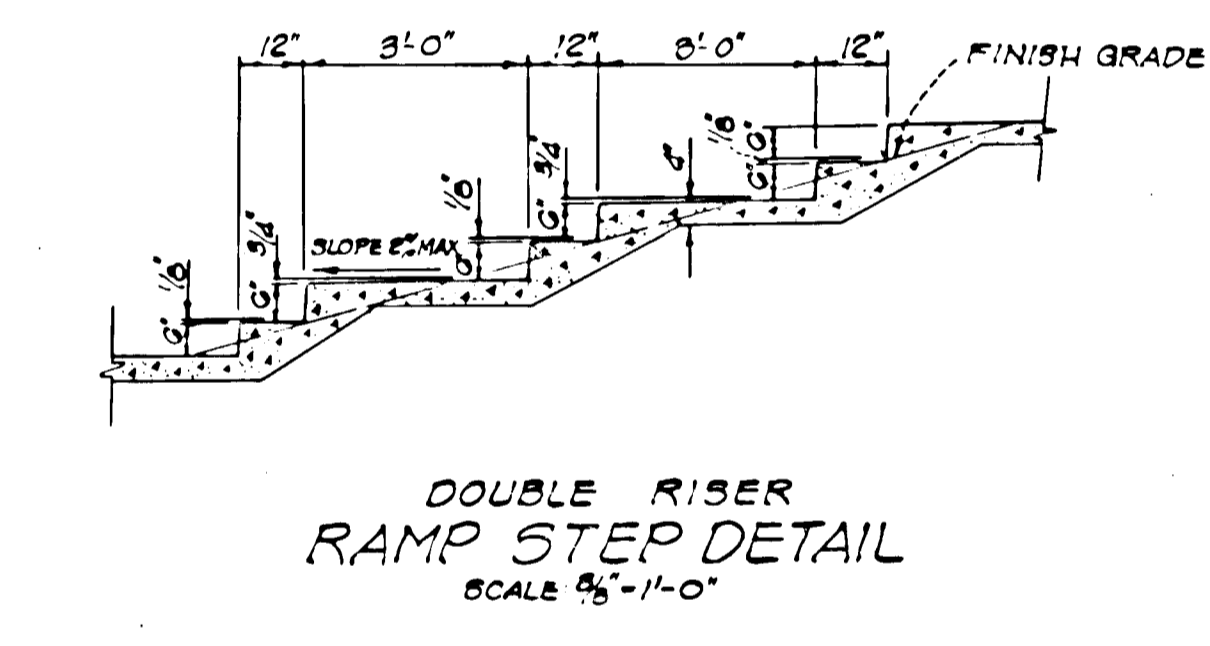


MD. SRC TYPE S GRATE



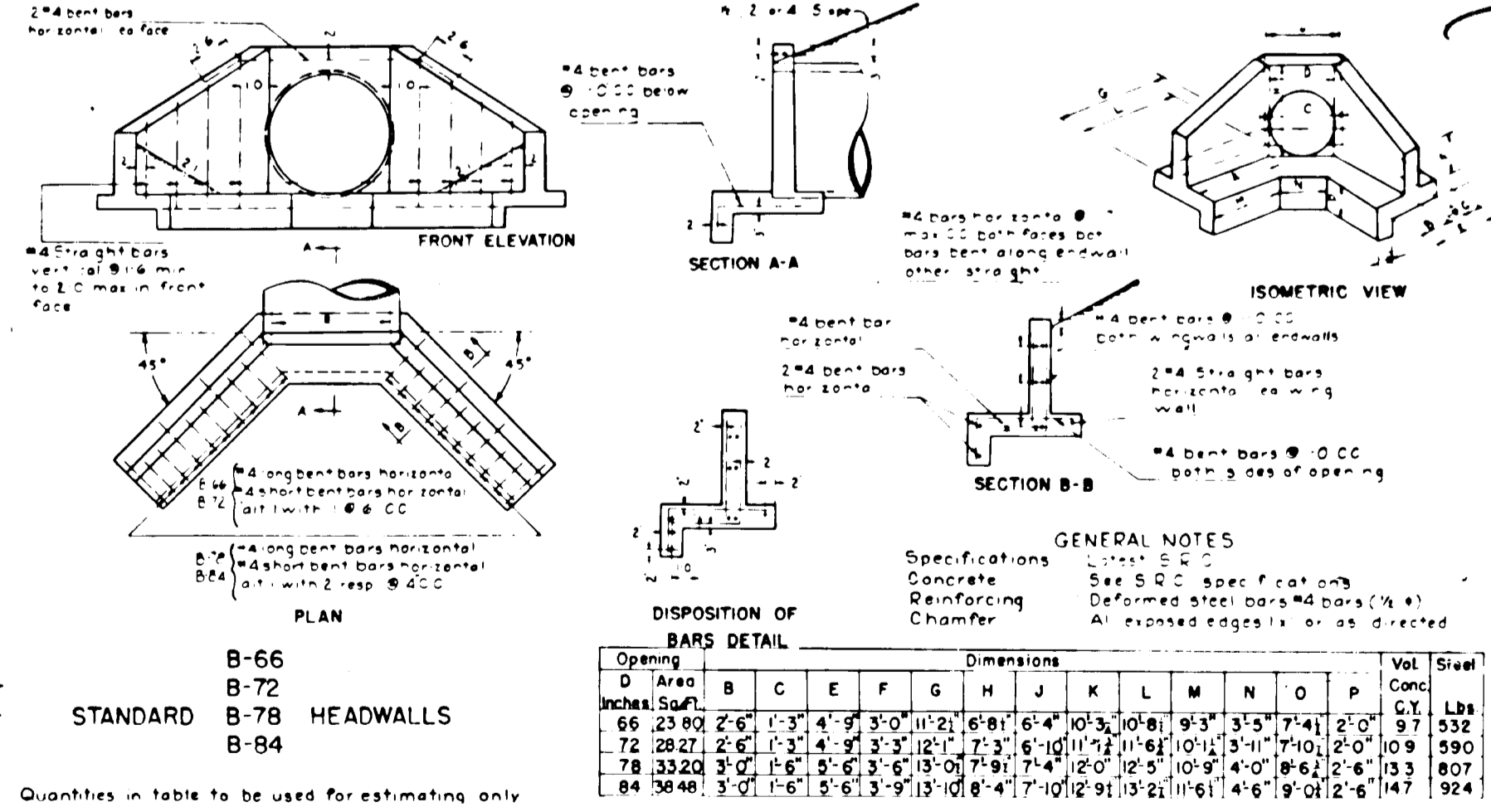
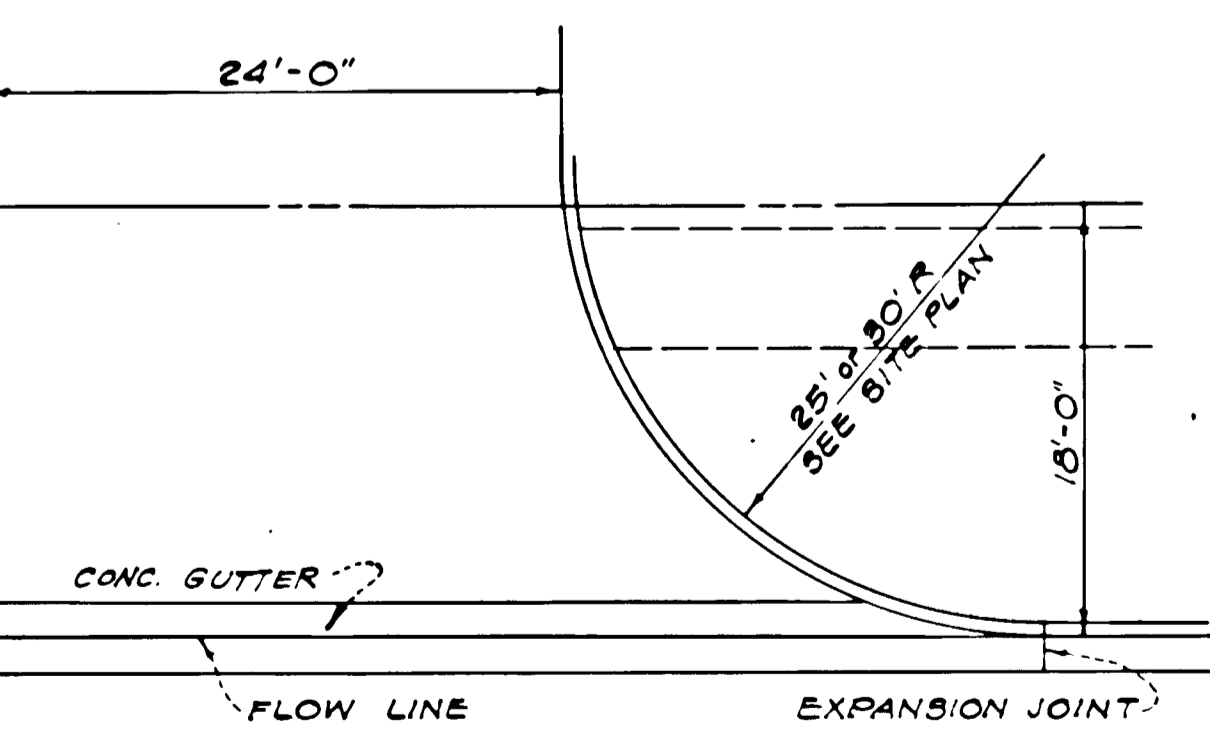
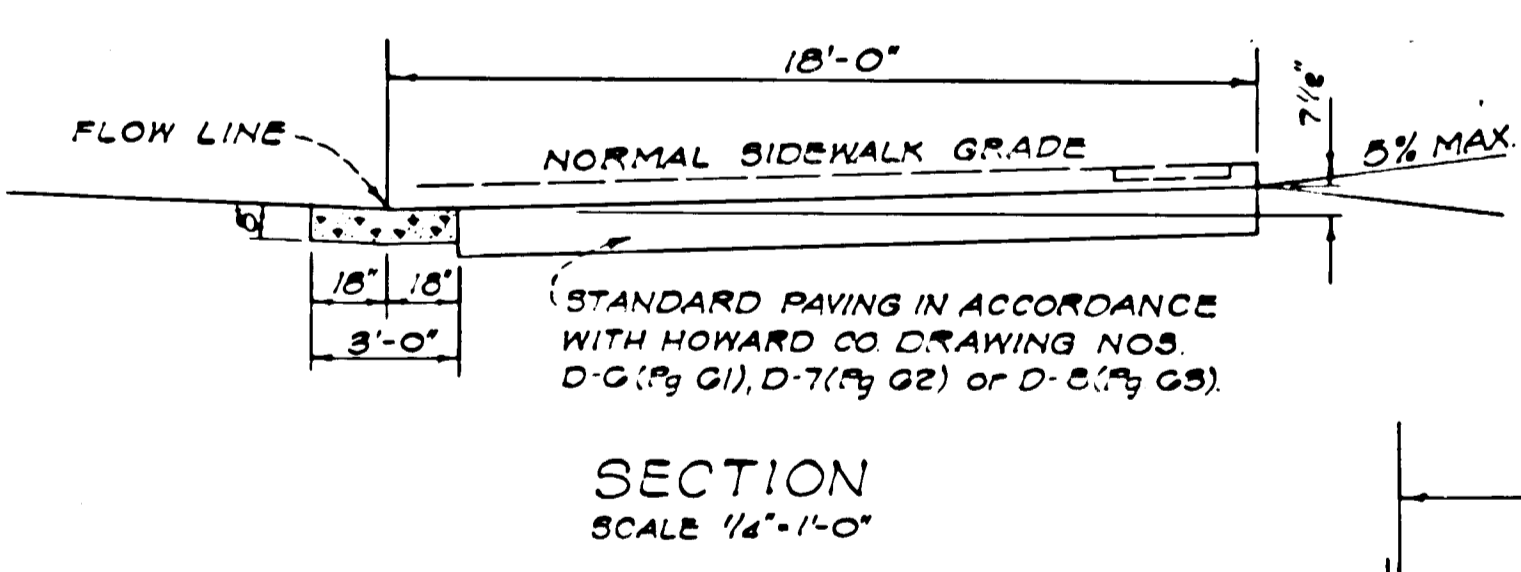
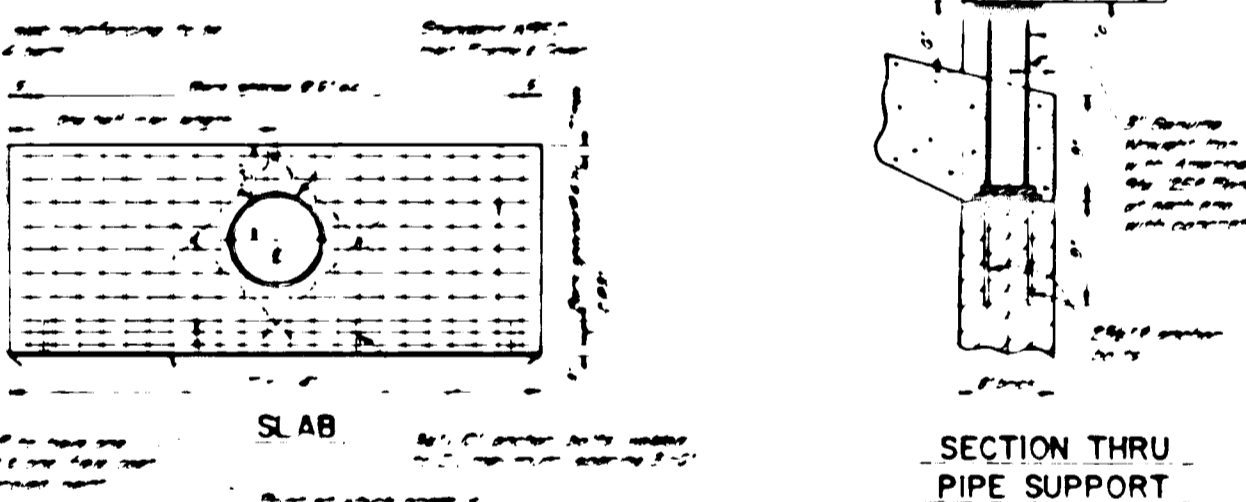
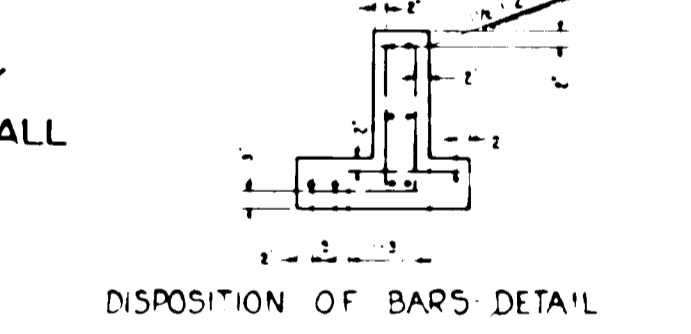
SECTION BB

SPECIAL DRIVEWAY GRADE INLET
NO SCALE



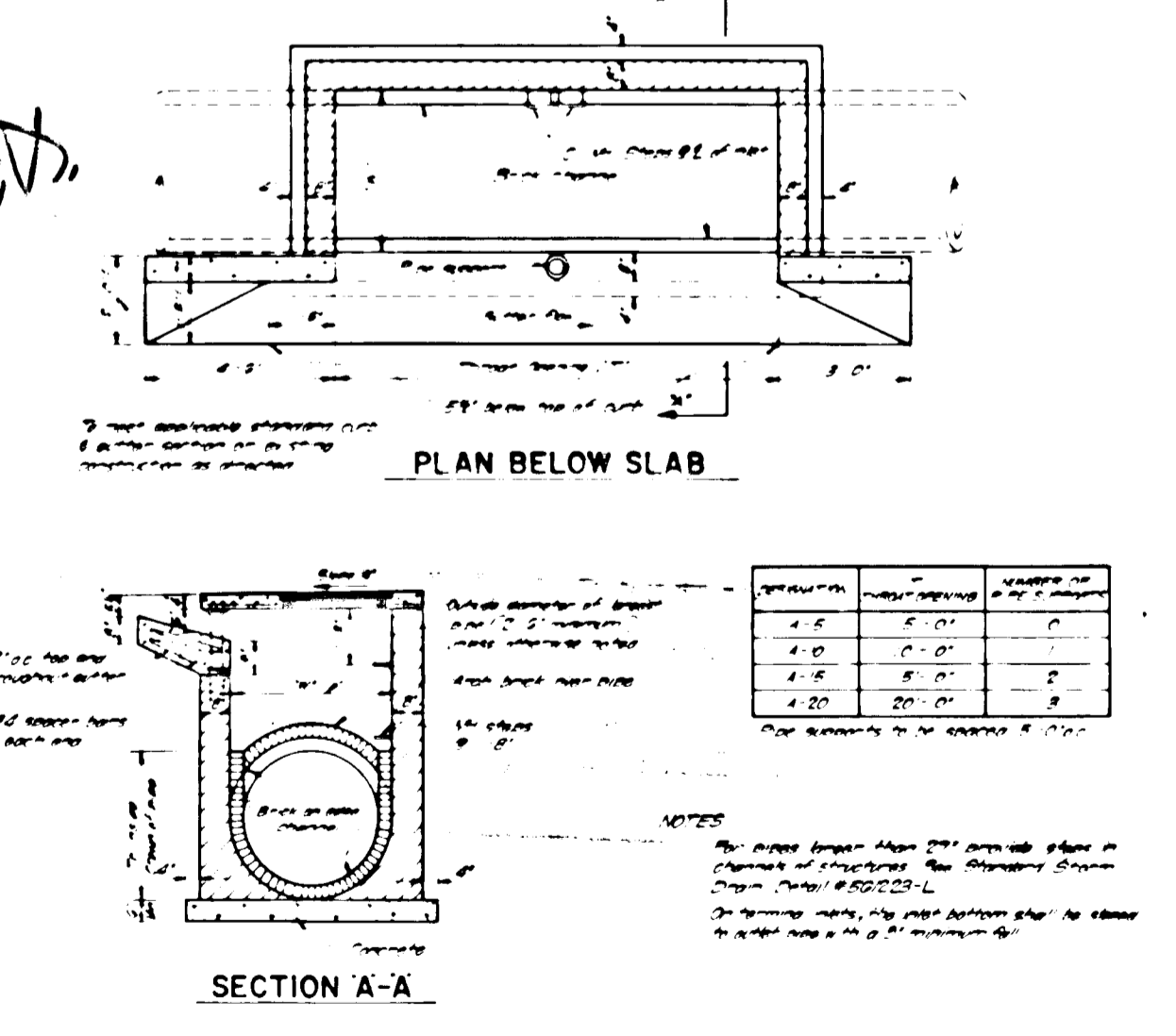
HOWARD COUNTY STANDARD TYPE "C" ENDWALL
NO SCALE

Opening	Dimensions										Vol. Conc.	Vol. Steel	
	A	B	C	E	F	G	H	I	J	L			
6	12	12	12	12	12	12	12	12	12	12	12	12	12
12	24	24	24	24	24	24	24	24	24	24	24	24	24
18	36	36	36	36	36	36	36	36	36	36	36	36	36
24	48	48	48	48	48	48	48	48	48	48	48	48	48
30	60	60	60	60	60	60	60	60	60	60	60	60	60
36	72	72	72	72	72	72	72	72	72	72	72	72	72
42	84	84	84	84	84	84	84	84	84	84	84	84	84
48	96	96	96	96	96	96	96	96	96	96	96	96	96
54	108	108	108	108	108	108	108	108	108	108	108	108	108
60	120	120	120	120	120	120	120	120	120	120	120	120	120



HOWARD COUNTY STANDARD LARGE "B" HEADWALL
NO SCALE

Opening	Dimensions										Vol. Conc.	Vol. Steel	
	B	C	E	F	G	H	J	K	L	M			
66	23 1/2	2 1/2	1 3/4	4 1/2	3 1/2	11 1/2	6 1/4	10 1/2	10 1/2	9 3/4	2 1/4	9 1/2	332
72	28 1/2	2 1/2	1 3/4	4 1/2	3 1/2	12 1/2	7 1/4	11 1/2	11 1/2	10 1/2	2 1/4	10 1/2	390
78	33 1/2	2 1/2	1 3/4	4 1/2	3 1/2	13 1/2	8 1/4	12 1/2	12 1/2	11 1/2	2 1/4	11 1/2	458
84	38 1/2	2 1/2	1 3/4	4 1/2	3 1/2	14 1/2	9 1/4	13 1/2	13 1/2	12 1/2	2 1/4	12 1/2	526



HOWARD COUNTY STANDARD CLASS A INLET
NO SCALE

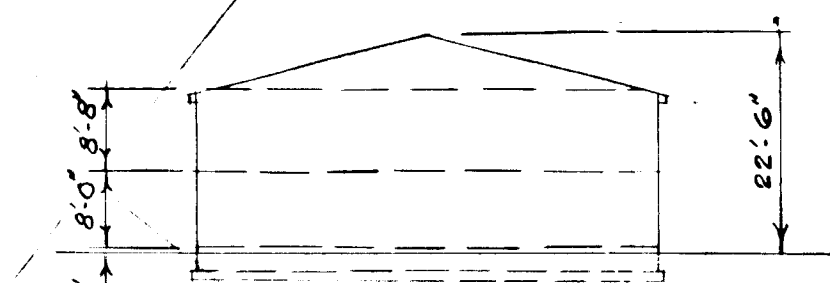
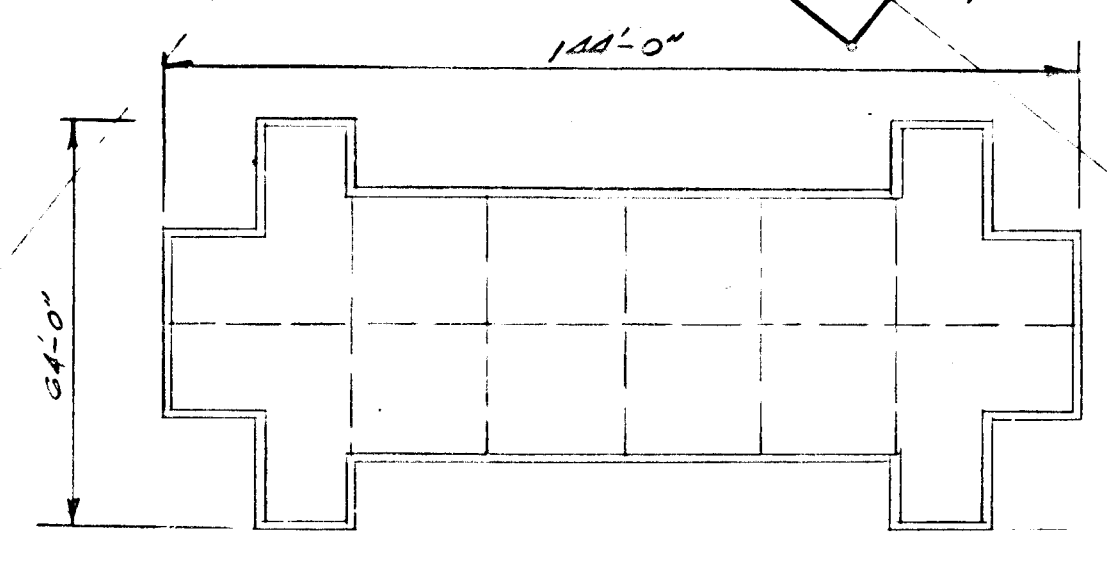
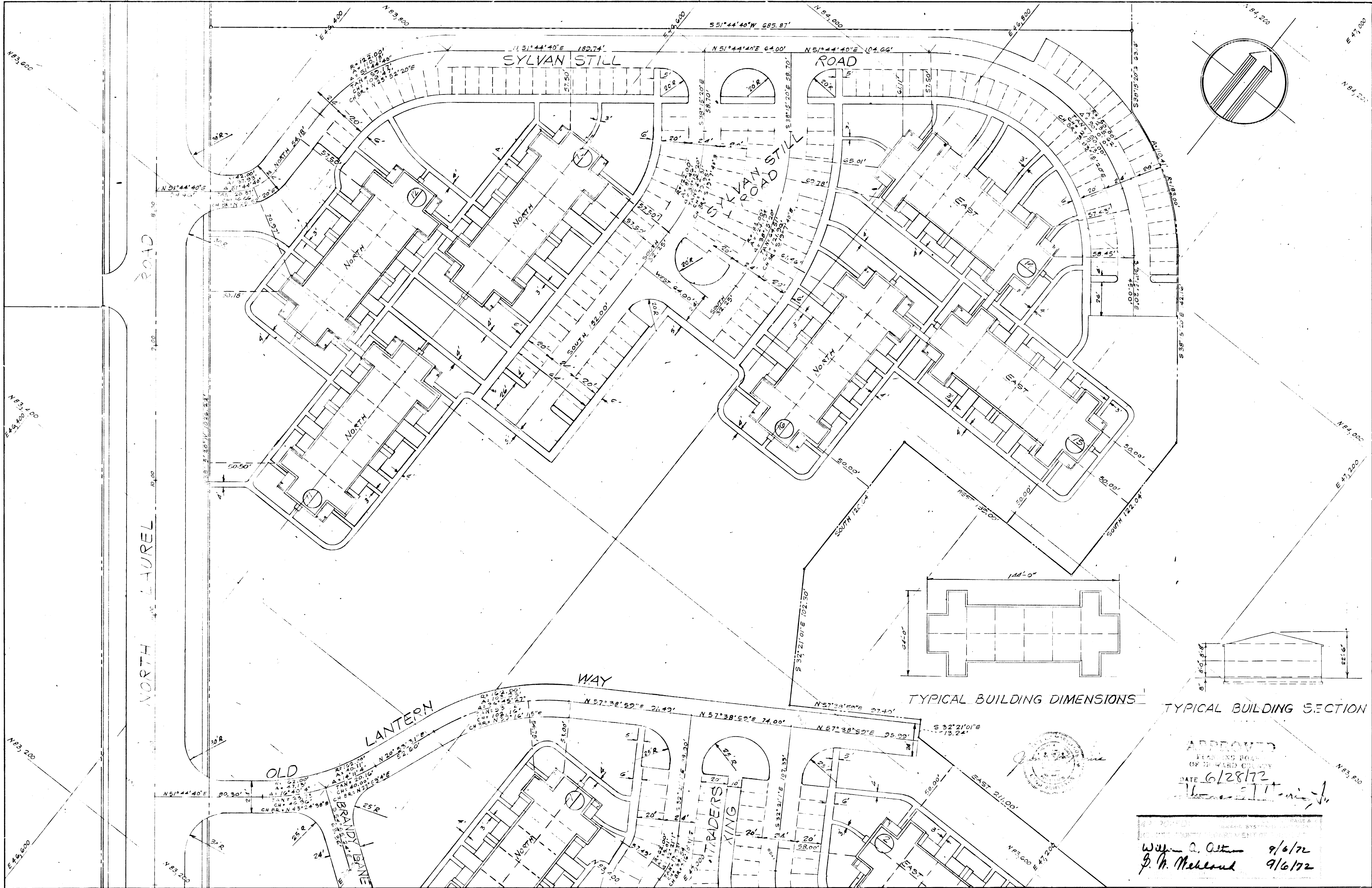
APPROVED FOR PUBLIC WATER, PUBLIC SEWERAGE AND STORM DRAINAGE SYSTEMS AND ROADS
HOWARD COUNTY DEPARTMENT OF PUBLIC WORKS
Director: *William A. Alt* DATE: 9/4/72
Chief, Bureau of Highways: *D. W. Wickham* DATE: 9/16/72

JEROME J. NORRIS & ASSOCS.
LAND PLANNING - HOUSING CONSULTANTS
6001 32ND STREET, N.W.
WASHINGTON, D.C.

WHISKEY BOTTOM APARTMENTS
SIXTH ELECTION DISTRICT
HOWARD COUNTY, MARYLAND

SECTION THREE SITE IMPROVEMENT DETAILS

REVISIONS
SCALE: NOTED
DRAWING No. 5-4
JULY 3, 1972 OF 13



TYPICAL BUILDING DIMENSIONS

TYPICAL BUILDING SECTION

APPROVED
 PLANNING BOARD
 OF HOWARD COUNTY
 DATE 6/28/72
 Thomas J. ...

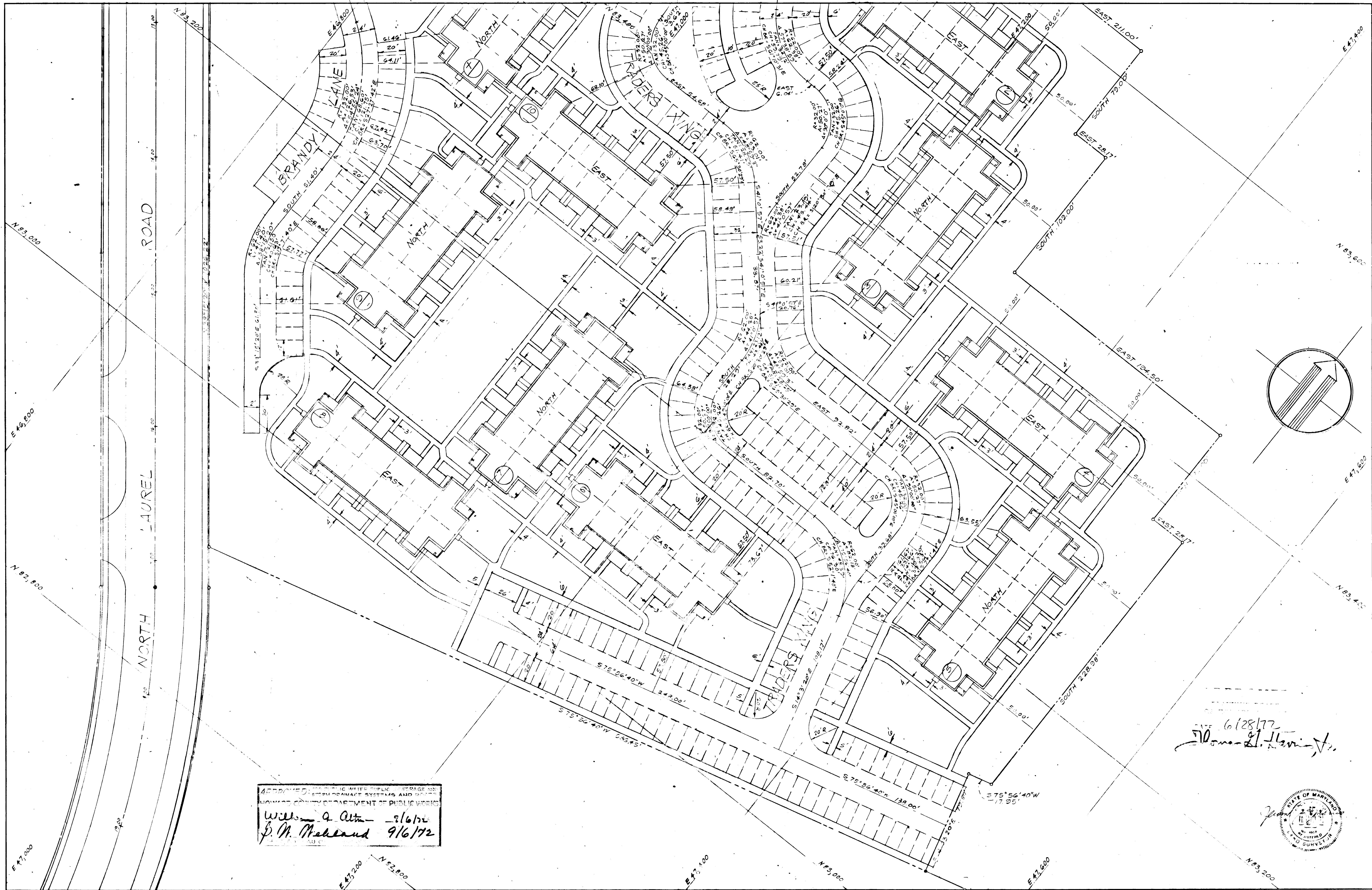
William A. Oster 9/6/72
 J. H. Mehloud 9/6/72

JEROME J. NORRIS & ASSOCIATES
 LAND PLANNING - HOUSING CONSULTANTS
 6001 32ND STREET, N.W.
 WASHINGTON, D.C.

WHISKEY BOTTOM APARTMENTS
 SIXTH ELECTION DISTRICT
 HOWARD COUNTY MARYLAND

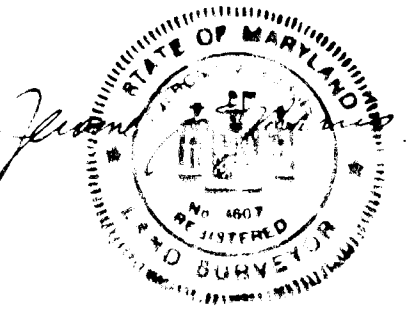
SECTION THREE
BUILDING LOCATION PLAN

REVISIONS	SCALE: 1"=30'	DRAWING No. S-5
	JULY 3, 1972	OF 13



APPROVED FOR THE WATER SUPPLY, SEWERAGE AND
 STORM DRAINAGE SYSTEMS AND POWER
 HOWARD COUNTY DEPARTMENT OF PUBLIC WORKS
 Wilson A. Altman 9/6/72
 J. M. Mehlend 9/6/72

DATE 6/28/72
 Thomas L. Harris, Jr.



OWNER: JEROME J. NORRIS & ASSOCIATES
 ENGINEER: THOMAS L. HARRIS, JR.
 DATE: 7/3/72
 SHEET: 13 OF 13

JEROME J. NORRIS & ASSOCIATES
 LAND PLANNING - HOUSING CONSULTANTS
 6001 32ND STREET, N.W.
 WASHINGTON, D.C.

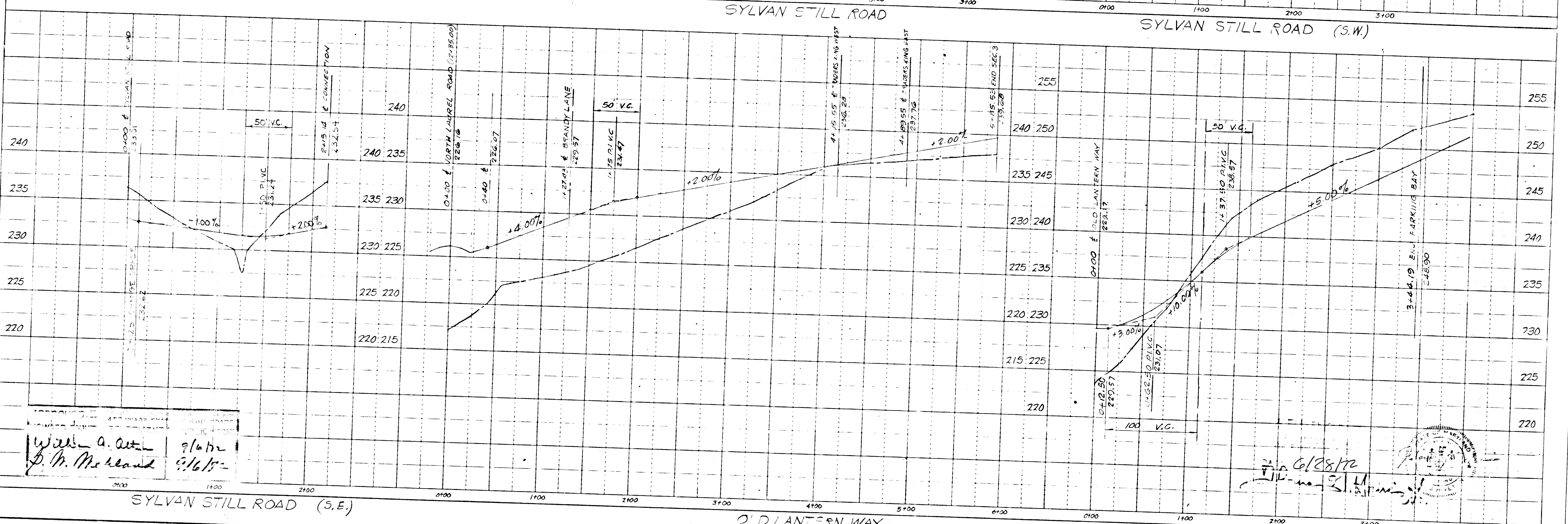
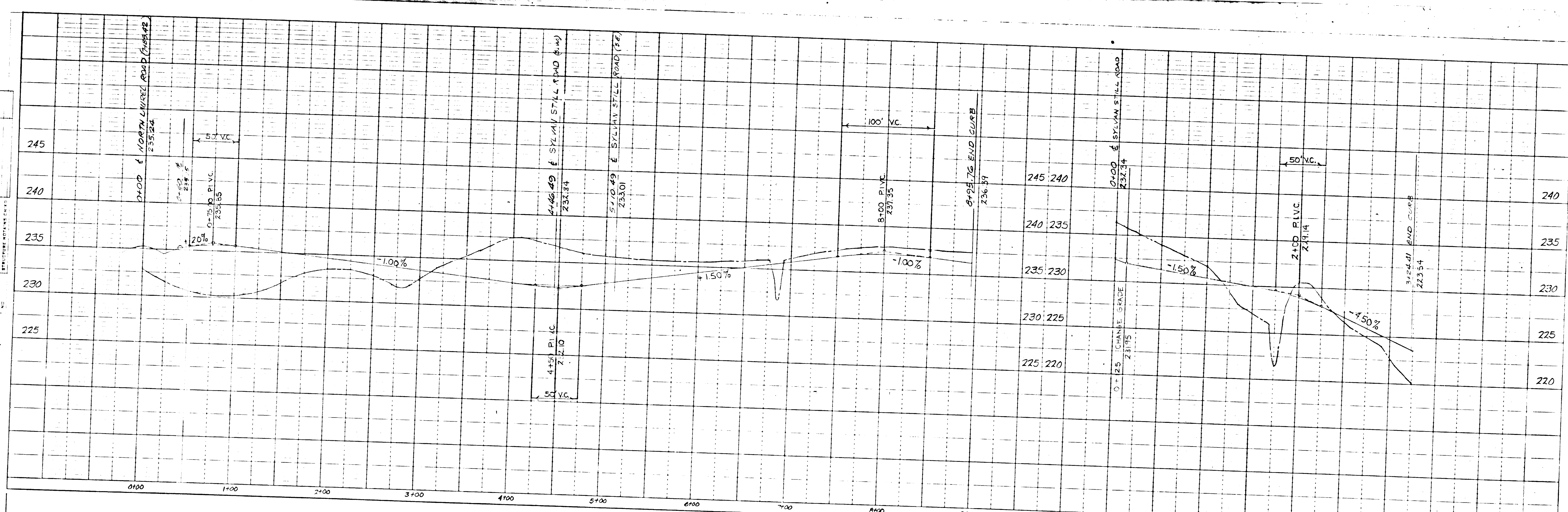
WHISKEY BOTTOM APARTMENTS
 SIXTH ELECTION DISTRICT
 HOWARD COUNTY, MARYLAND

SECTION THREE
BUILDING LOCATION PLAN

REVISIONS

SCALE: 1"=30'
 DRAWING No. S-6
 July 3, 1972 OF 13

PROFILE SHEET
 DATE
 BY
 NO.
 NOTE BOOK
 B.M. NOTED
 ELEVATION POINTS CHECKED



With a. A. Ott
 P. M. McKeand
 9/6/72
 9/6/72

6/28/72
 J. M. Stillman



OWNER-DEVELOPER
 WHISKEY BOTTOM
 1720 WISCONSIN
 WASHINGTON, D.C.

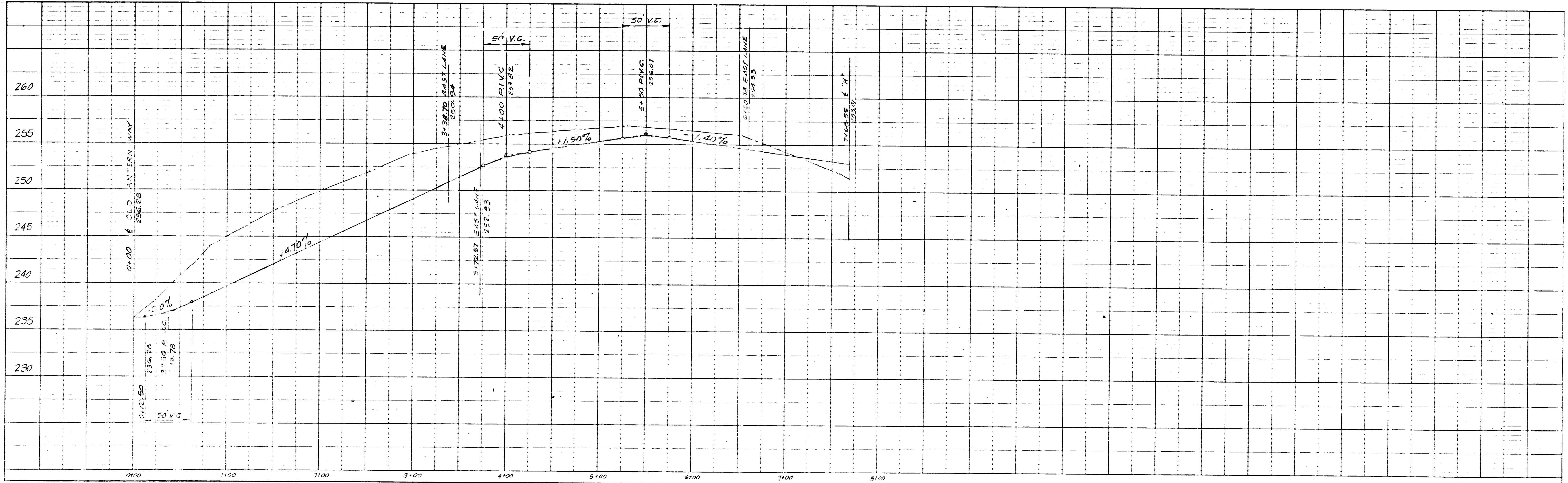
JEROME J. NORRIS & ASSOC
 LAND PLANNING - HOUSING CONSULTANTS
 6001 32ND STREET, N.W.
 WASHINGTON, D.C.

WHISKEY BOTTOM APARTMENTS
 SIXTH ELECTION DISTRICT
 HOWARD COUNTY MARYLAND

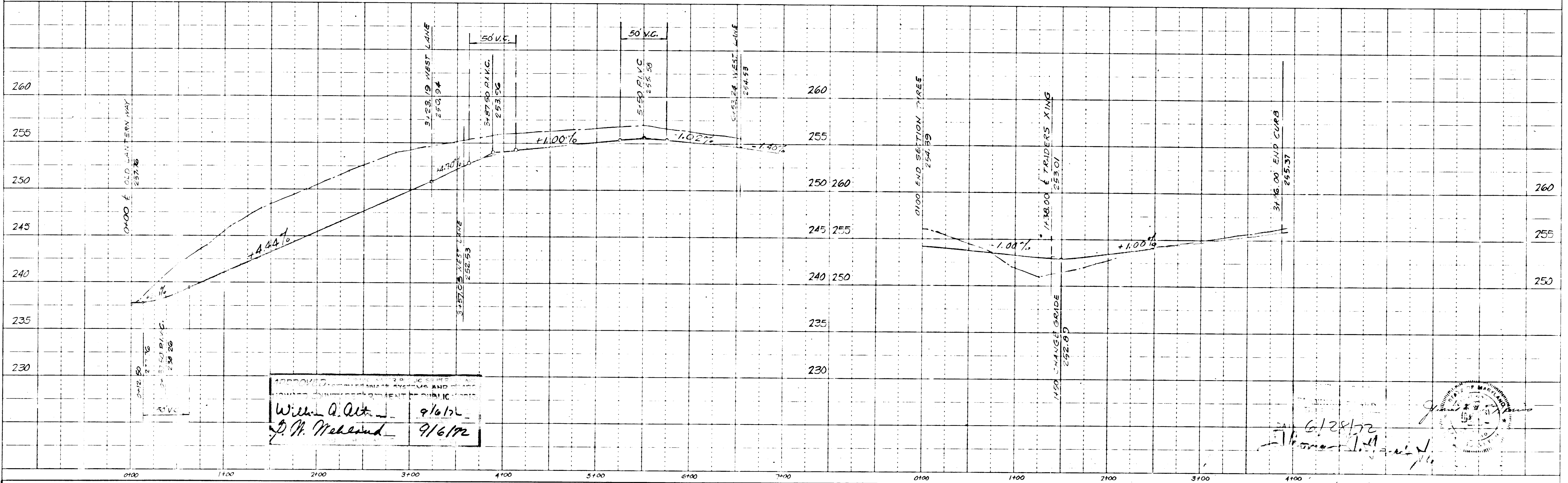
SECTION THREE
DRIVEWAY PROFILES

REVISIONS	SCALE: HOR: 1"=50'	DRAWING No: 5-7
	VER: 1"=5'	OF 13
	JULY 3, 1972	

DATE _____
 PROFILE SUBMITTED BY _____
 CHECKED BY _____
 DATE _____
 NOTE: SEE PLAN FOR VERTICAL CURVE DATA



DATE _____
 PROFILE SUBMITTED BY _____
 CHECKED BY _____
 DATE _____
 NOTE: SEE PLAN FOR VERTICAL CURVE DATA



APPROVED: _____
 _____ 9/6/72
 _____ 9/6/72

6/28/72

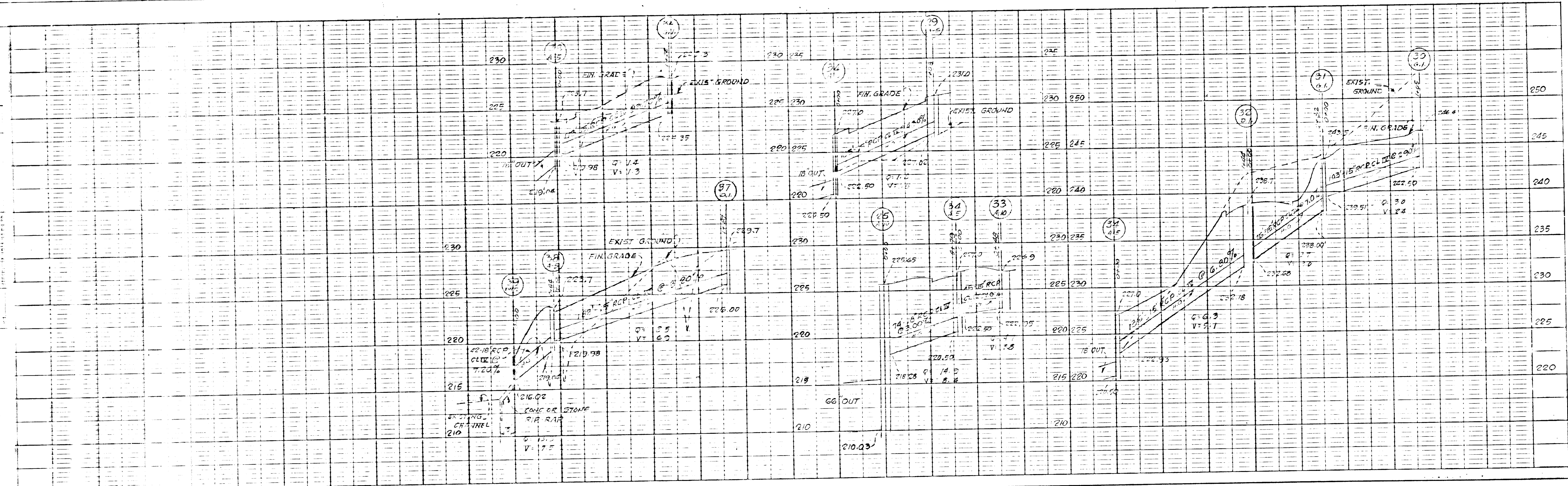
BY DEVELOPER
 BY BOTTOM SECTION THREE
 WISCONSIN AND NEW YORK
 INFRONT OF COURT

BY J. NORRIS & ASSOC'S
 LAND PLANNING - HOUSING CONSULTANTS
 6001 32ND STREET, N.W.
 WASHINGTON, D.C.

WHISKEY BOTTOM APARTMENTS
 SIXTH ELECTION DISTRICT
 HOWARD COUNTY MARYLAND

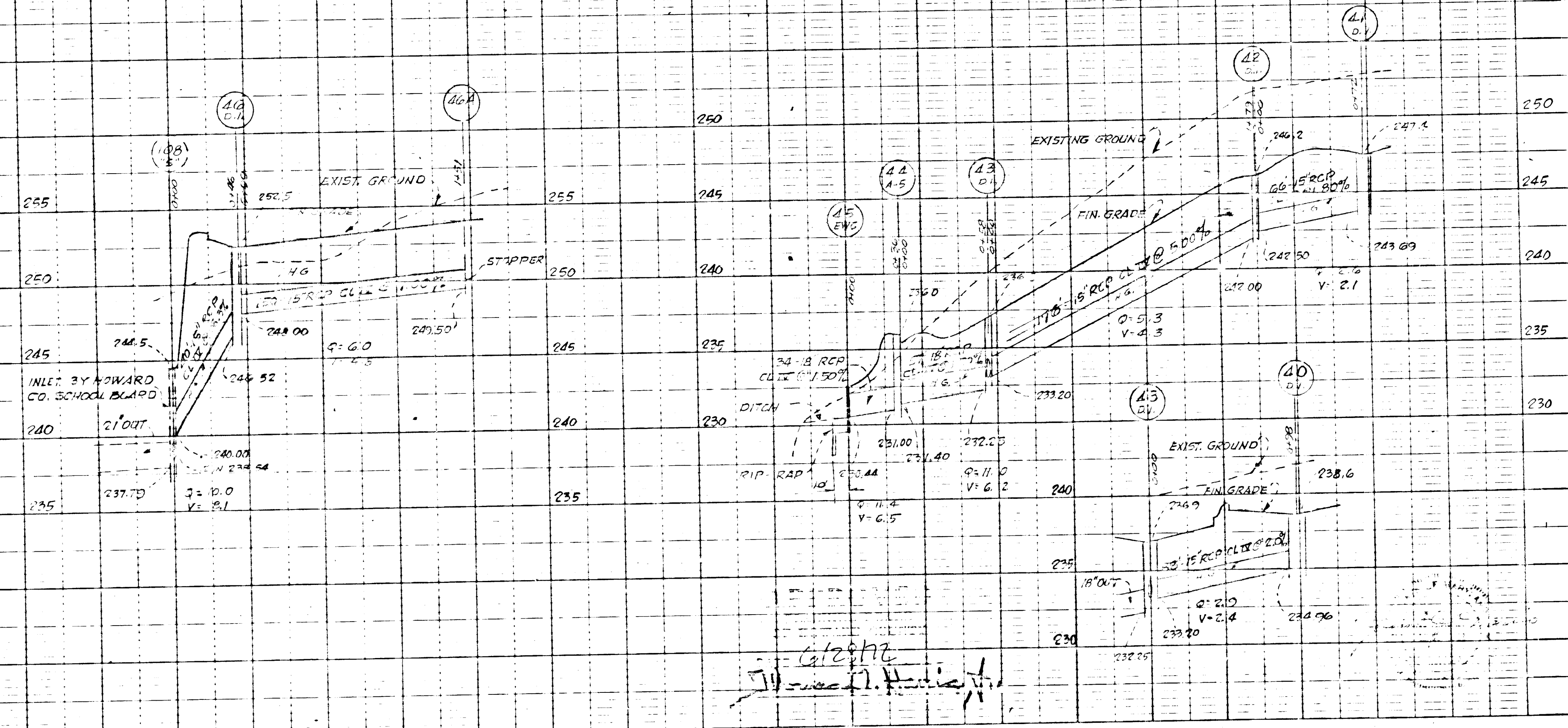
SECTION THREE
POWERY PROFILES

REVISIONS
 SCALE: HOR: 1"=50' V: 1"=5'
 DATE: JULY 3, 1972
 DRAWING NO: SDP-72-86



STRUCTURE SCHEDULE			
NO.	TYPE	TOPI	REMARKS
20	SPRINKLER	224.0	SEE DETAIL SHEET NO. 4
21	SPRINKLER	227.0	SEE DETAIL SHEET NO. 4
22	SPRINKLER	223.7	SEE DETAIL SHEET NO. 4
23	SPRINKLER	223.7	SEE DETAIL SHEET NO. 4
24	SPRINKLER	223.7	SEE DETAIL SHEET NO. 4
25	SPRINKLER	223.7	SEE DETAIL SHEET NO. 4
26	SPRINKLER	223.7	SEE DETAIL SHEET NO. 4
27	SPRINKLER	223.7	SEE DETAIL SHEET NO. 4
28	SPRINKLER	223.7	SEE DETAIL SHEET NO. 4
29	SPRINKLER	223.7	SEE DETAIL SHEET NO. 4
30	SPRINKLER	223.7	SEE DETAIL SHEET NO. 4
31	SPRINKLER	223.7	SEE DETAIL SHEET NO. 4
32	SPRINKLER	223.7	SEE DETAIL SHEET NO. 4
33	SPRINKLER	223.7	SEE DETAIL SHEET NO. 4
34	SPRINKLER	223.7	SEE DETAIL SHEET NO. 4
35	SPRINKLER	223.7	SEE DETAIL SHEET NO. 4
36	SPRINKLER	223.7	SEE DETAIL SHEET NO. 4
37	SPRINKLER	223.7	SEE DETAIL SHEET NO. 4
38	SPRINKLER	223.7	SEE DETAIL SHEET NO. 4
39	SPRINKLER	223.7	SEE DETAIL SHEET NO. 4
40	SPRINKLER	223.7	SEE DETAIL SHEET NO. 4
41	SPRINKLER	223.7	SEE DETAIL SHEET NO. 4
42	SPRINKLER	223.7	SEE DETAIL SHEET NO. 4
43	SPRINKLER	223.7	SEE DETAIL SHEET NO. 4
44	SPRINKLER	223.7	SEE DETAIL SHEET NO. 4
45	SPRINKLER	223.7	SEE DETAIL SHEET NO. 4
46	SPRINKLER	223.7	SEE DETAIL SHEET NO. 4
47	SPRINKLER	223.7	SEE DETAIL SHEET NO. 4
48	SPRINKLER	223.7	SEE DETAIL SHEET NO. 4
49	SPRINKLER	223.7	SEE DETAIL SHEET NO. 4
50	SPRINKLER	223.7	SEE DETAIL SHEET NO. 4

STORM DRAIN STRUCTURES ARE HOWARD COUNTY STANDARD UNLESS OTHERWISE NOTED.



William A. Pitts 2/3/72
 J. H. Pichland 9/6/72