

INDEX OF SHEETS

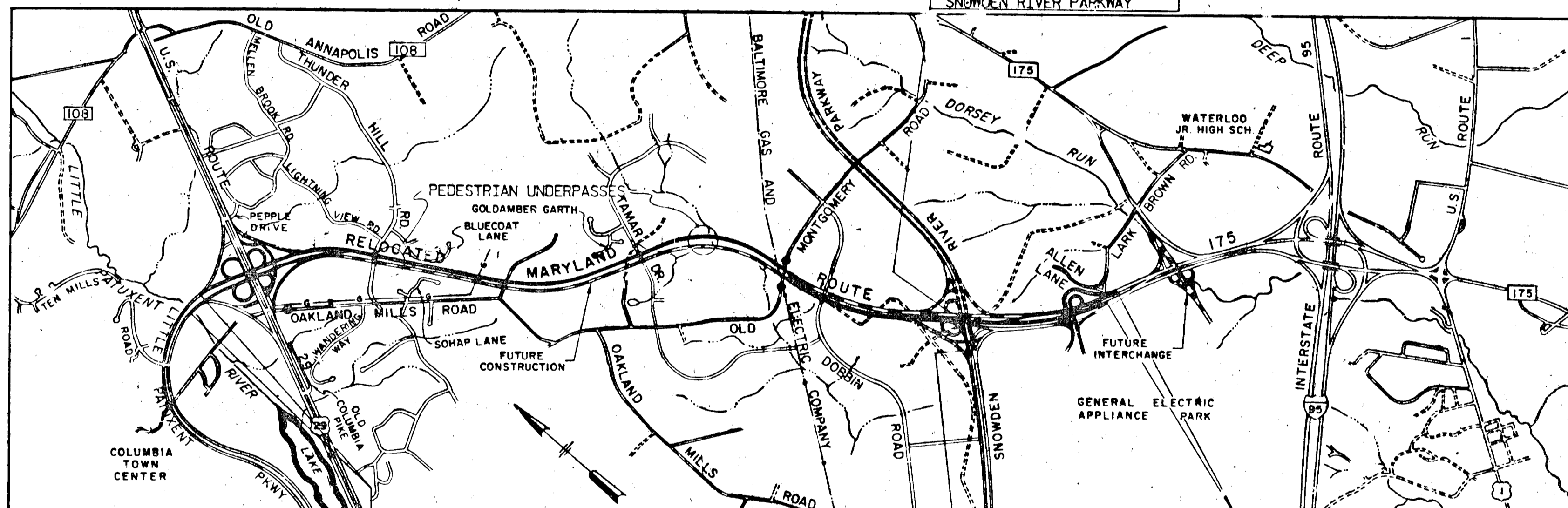
SHEET NO.	DESCRIPTION
1.	TITLE SHEET & LOCATION MAP
2. TO 5.	TYPICAL CROSS-SECTIONS OF IMPROVEMENTS
6.	DITCH DETAILS
7.	PAVEMENT DETAILS, NOTES, ABBREVIATIONS & SYMBOLS
8. TO 9.	SUPERELEVATION TRANSITION TABLES
10.	SUB-ELEVATION TRANSITION TABLES & MISCELLANEOUS DETAILS
11.	MISCELLANEOUS DETAILS
12.	PLAN - STA. 82+ TO STA. 94+ E.B.R. & W.B.R.
13.	PROFILE - STA. 82+ TO STA. 110+ E.B.R. & W.B.R.
14.	PLAN - STA. 94+ TO STA. 101+ W.B.R. & RAMP 'F'
15.	PROFILE - RAMP 'E' & RAMP 'F'
16.	PLAN - STA. 101+ TO STA. 108+ W.B.R., RAMP 'C' & STA. 9+44 TO STA. 19+13 PAMP 'C'
17.	PLAN - STA. 94+ TO STA. 108+ E.B.R., RAMP 'E' & TEMP. RAMP
18.	PROFILE - RAMP 'C'
19.	PROFILE - RAMP 'G' & TEMP. RAMP
20.	PLAN - STA. 0+00 TO STA. 15+30 RAMP 'D'
21.	PROFILE - RAMP 'D'
22.	PLAN - STA. 108+ TO STA. 123+ E.B.R. & W.B.R., STA. 0+00 TO STA. 9+44 RAMP 'C' & STA. 15+30 TO STA. 25+92 RAMP 'D'
23.	PROFILE - STA. 110+ TO STA. 123+ E.B.R. & W.B.R. & TEMP. CONN.
24.	PLAN - STA. 123+ BK. = 1004+ AHD. TO STA. 1019+ & THUNDER HILL RD.
25.	PROFILE - STA. 123+ BK. = 1004+ AHD. TO STA. 1019+
26.	PLAN - STA. 1019+ TO STA. 1033+ & ENTRANCE ROAD
27.	PROFILE - STA. 1019+ TO STA. 1033+ & GRAVEL DR. @ STA. 1039+
28.	PLAN - STA. 1033+ TO STA. 1046+ & GRAVEL DRIVE
29.	PROFILE - STA. 1033+ TO STA. 1046+ & ENTRANCE RD. @ STA. 1029+
30.	PLAN - STA. 1046+ TO STA. 1059+
31.	PROFILE - STA. 1046+ TO STA. 1059+
32.	PLAN - STA. 1059+ TO STA. 1073+ & TAMAR DRIVE
33.	PROFILE - STA. 1059+ TO STA. 1073+
34.	PLAN - STA. 1073+ TO STA. 1086+
35.	PROFILE - STA. 1073+ TO STA. 1086+
36.	PLAN - STA. 1086+ TO STA. 1100+
37.	PROFILE - STA. 1086+ TO STA. 1100+
38.	PLAN - STA. 1100+ TO STA. 1114+
39.	PROFILE - STA. 1100+ TO STA. 1114+
40.	PROFILE - TEMP. X-OVER W.B.R. & E.B.R., STA. 105+ TO STA. 114+ AND STA. 1106 TO STA. 1122+
41.	PLAN - STA. 1114+ TO STA. 1129+
42.	PROFILE - STA. 1114+ TO STA. 1129+
43.	PLAN - STA. 1129+ TO STA. 1134+ BK. = STA. 134+ AHD. TO STA. 124+
44.	PROFILE - STA. 1129+ TO STA. 1134+ BK. = STA. 134+ AHD. TO STA. 124+
45.	PLAN - STA. 124+ TO STA. 110+ & STA. 126+ TO STA. 126+ SNOWDEN RIVER PKWY.
46.	PROFILE - STA. 124+ TO STA. 110+ & STA. 118+ TO STA. 133+ SNOWDEN RIVER PKWY. RAMP 'C' & STA. 126+ TO STA. 134+ SNOWDEN RIVER PKWY.
47.	PROFILE - STA. 124+ TO STA. 110+ & STA. 118+ TO STA. 133+ SNOWDEN RIVER PKWY.
48.	PLAN - STA. 110+ TO STA. 100+ & RAMPS 'A', 'B', 'C' & 'G'
49.	PROFILE - STA. 110+ TO STA. 98+ & TEMP. CONN. TO SNOWDEN RIVER PARKWAY
50.	PLAN - STA. 98+ TO STA. 85+ & RAMPS 'A', 'C', 'G', C-D ROAD & ALLEN LANE CONN.
51.	PROFILE - STA. 98+ TO 85+ & ALLEN LANE CONN.
52.	PROFILE - RAMPS 'C' & 'G' @ GENERAL ELECTRIC APPLIANCE PARK
53.	PROFILE - RAMPS 'B' & 'A' & C-D ROAD @ GENERAL ELECTRIC APPLIANCE PARK
54. TO 55.	EXTENSION ON CONCRETE BOX CULVERT
56. TO 67.	RELOC. MD. RTE. 175 OVERPASS AT RAMPS 'C' & 'G'
68. TO 70.	PEDESTRIAN PASSAGES @ STA. 1019+ & STA. 1029+
71. TO 72.	DRAINAGE ITEMS
73.	PRELIMINARY & GRADING ITEMS & EARTHWORK SUMMARY
74. TO 75.	SUMMARY OF QUANTITIES

STATE OF MARYLAND
STATE ROADS COMMISSION

PLAN AND PROFILE OF PROPOSED
STATE HIGHWAY

FEDERAL AID PROJECT NO.

HOWARD COUNTY CONTRACT NO. HO-400-4-778
RELOCATED MARYLAND ROUTE 175
U. S. ROUTE 29 TO LARK BROWN ROAD



LIMIT OF WORK
CONTRACT NO. HO-400-4-778
STA. 88+50 W.B.R.
STA. 84+00 E.B.R.
RELOC. MD. RTE. 175

LOCATION MAP
SCALE: 1" = 2000

LIMIT OF WORK
CONTRACT NO. HO-400-4-778
STA. 121+50
SNOWDEN RIVER PARKWAY

LIMIT OF WORK
CONTRACT NO. HO-400-4-778
STA. 86+00 W.B.R. RELOC. MD. RTE. 175
STA. 88+75 E.B.R. RELOC. MD. RTE. 175

FED. ROAD DIV. NO.	STATE	FED. AID PROJ. NO.	SHEET NO.	TOTAL SHEETS
2	MD.		1	75

SOILS LEGEND

	A-2 SAND & FINES		A-4-7 CLAYEY SILT
	A-2-4 SILTY SAND		A-5 SILICIOUS SILT
	A-2-7 CLAYEY SAND		A-7-2 SANDY CLAY
	A-4-2 SANDY SILT		A-7 CLAY
	A-4 SILT		A-7-4 SILTY CLAY
			ROCK, PENETRATED BY POWER SOIL AUGER

PLAN LOCATION OF SOIL BORINGS
SCALE: BORING TARGETS & PROFILES HORIZONTAL - NONE, VERTICAL - 1" = 10'

L.L. - LIQUID LIMIT P.C.F. - POUNDS PER CUBIC FOOT
P.I. - PLASTICITY INDEX M.D.D. - MAXIMUM DRY DENSITY
N.P. - NOM - PLASTIC O.M.C. - OPTIMUM MOISTURE CONTENT
M.D.D. & O.M.C. PER A.A.S.H.O. DESIGNATION T-180 METHOD '01

UNLESS OTHERWISE NOTED ON PLANS, ALL SOIL SURVEY BORINGS FOR ROADWAY CONSTRUCTION WERE TAKEN ON 8" RESPECTIVE LAMLS. UNLESS OTHERWISE NOTED ON PLANS, ALL SOIL SURVEY BORINGS FOR ROADWAY CONSTRUCTION WERE LEFT OPEN FOR 24 HOURS WITH NO EXCESSIVE MOISTURE OR FREE WATER ENCOUNTERED DURING TIMES OF SOIL SURVEYS. JULY 1970, SEPT. 1971 AND MARCH 1972. BORING DATA FOR STRUCTURES ARE INDICATED ON RESPECTIVE PLAN SHEETS.

RIGHT-OF-WAY LINES SHOWN ON THESE PLANS DO NOT INCLUDE EASEMENT, THEY ARE FOR ASSISTANCE IN INTERPRETING THE PLANS; THEY ARE NOT OFFICIAL FOR OFFICIAL "E" RIGHT-OF-WAY AND EASEMENT INFORMATION. SEE APPROPRIATE RIGHT-OF-WAY PLAT OR PLATS.

CONVENTIONAL SIGNS

STATE AND NATIONAL LINE	CULVERTS
COUNTY LINE	RETAINING WALL
CITY OR VILLAGE	DROP IN LET
GUARD RAIL	TROLLEY POLE
FENCE LINE	POWER POLE
UNFENCED PROPERTY	TELEPHONE OR TELEGRAPH POLE
RIGHT OF WAY LINE	MARSH
TRAVELED WAY	HEDGE
RAILROADS	GROUND ELEVATION
BASE OR SURVEY LINE	GRADE ELEVATION
DITCH WITH SOIL SODDING	
SOIL STABILIZING	
SEED & MULCH DITCH	
LINE DEMONSTRATING PEAK OR HIGH POINT	
CONCRETE DITCH	
INLET & OUTLET DITCH	

FOR DETAILS OF CULVERTS, ETC. SEE STANDARD SHEET. STATE SPECIFICATIONS AND STANDARD PLANS ON FILE IN FEDERAL HIGHWAY ADMINISTRATION.

DESIGN CONTROLS

CONTROLLED ACCESS ARTERIAL HIGHWAY
A.D.T. 1992 = 38,600
D.H.V. 1992 = 12.0% OF A.D.T.
D/D = 65.0 %
T-A.D.T. = 6.0%
T-D.H.V. = 3.0%
DESIGN SPEED = 60 M.P.H.
MILEAGE = 3.645 MILES

GENERAL ELECTRIC APPLIANCE PARK INTERCHANGE AND PEDESTRIAN UNDERPASSES NOT INCLUDED IN THIS CONTRACT.

EQUALITIES

P.T. STA. 123+00.89 BK. = P.O.T. STA. 1004+40.89 AHD.
P.T. STA. 1057+59.83 BK = P.O.T. STA. 1058+13.43 AHD.
P.O.T. STA. 1100+56.44 W.B.R. BK. =
P.T. STA. 1099+85.13 @ SURVEY BK. = P.T. STA. 1099+80.76 @ SURVEY AHD.
P.T. STA. 1134+12.25 BK. = P.O.T. STA. 134+02.75 AHD.

APPROVED
PLANNING BOARD
OF HOWARD COUNTY

DATE 10/18/72
Thomas J. Harris, Jr.

GREEN ASSOCIATES, INC.
CONSULTING ENGINEERS
BALTIMORE, MARYLAND
VICE-PRESIDENT, TRANSPORTATION DIVISION

APPROVED: NO WATER OR SEWER HOWARD COUNTY HEALTH DEPARTMENT	<i>[Signature]</i> 3/19/73	DATE
APPROVED: HOWARD COUNTY OFFICE OF PLANNING & ZONING	<i>[Signature]</i> 3-23-73	DATE
APPROVED: FOR PUBLIC WATER, PUBLIC SEWERAGE AND STORM DRAIN SYSTEMS & ROADS HOWARD COUNTY DEPARTMENT OF PUBLIC WORKS	<i>[Signature]</i> 3/23/73	DATE
APPROVED: CHIEF, BUREAU OF HIGHWAYS	<i>[Signature]</i> 3/23/73	DATE

REVIEWED AND APPROVAL RECOMMENDED
CHIEF, BUREAU OF SPECIAL SERVICES
APPROVAL RECOMMENDED
DEPUTY CHIEF ENGINEER - DEVELOPMENT
APPROVED
CHIEF ENGINEER - STATE HIGHWAY ADMINISTRATION

B.M. # 4 ELEV. 369.532
SPIKE IN 40" DAK
150' RT. & STA. 1004+40.89

B.M. # 13 ELEV. 386.334
SPIKE IN THUNDER HILL SIGN
140' LT. & STA. 1013+40

APPROVED: NO WATER OR SEWER
HOWARD COUNTY HEALTH DEPARTMENT

[Signature] 3/10/73
COUNTY HEALTH OFFICER DATE

APPROVED: HOWARD COUNTY OFFICE OF PLANNING & ZONING

[Signature] 3/23/73
PLANNING DIRECTOR DATE
CHIEF, DIVISION OF LAND DEVELOPMENT & TRANSPORTATION PLANNING DATE

APPROVED: FOR PUBLIC WATER, PUBLIC SEWERAGE AND STORM
DRAIN SYSTEMS & ROADS
HOWARD COUNTY DEPARTMENT OF PUBLIC WORKS

[Signature] 3/20/73
DIRECTOR DATE
[Signature] 3/20/73
CHIEF, BUREAU OF HIGHWAYS DATE

FED. ROAD DIST. NO.	STATE	FED. AID PROJ. NO.	SHEET NO.	TOTAL SHEETS
2	MD.		24	75

TO U.S. RTE. 29

P.O.T. 1007+32.66 RELOC. MD. RTE. 175 =
P.T. 125+91.19 TEMP. CONN.

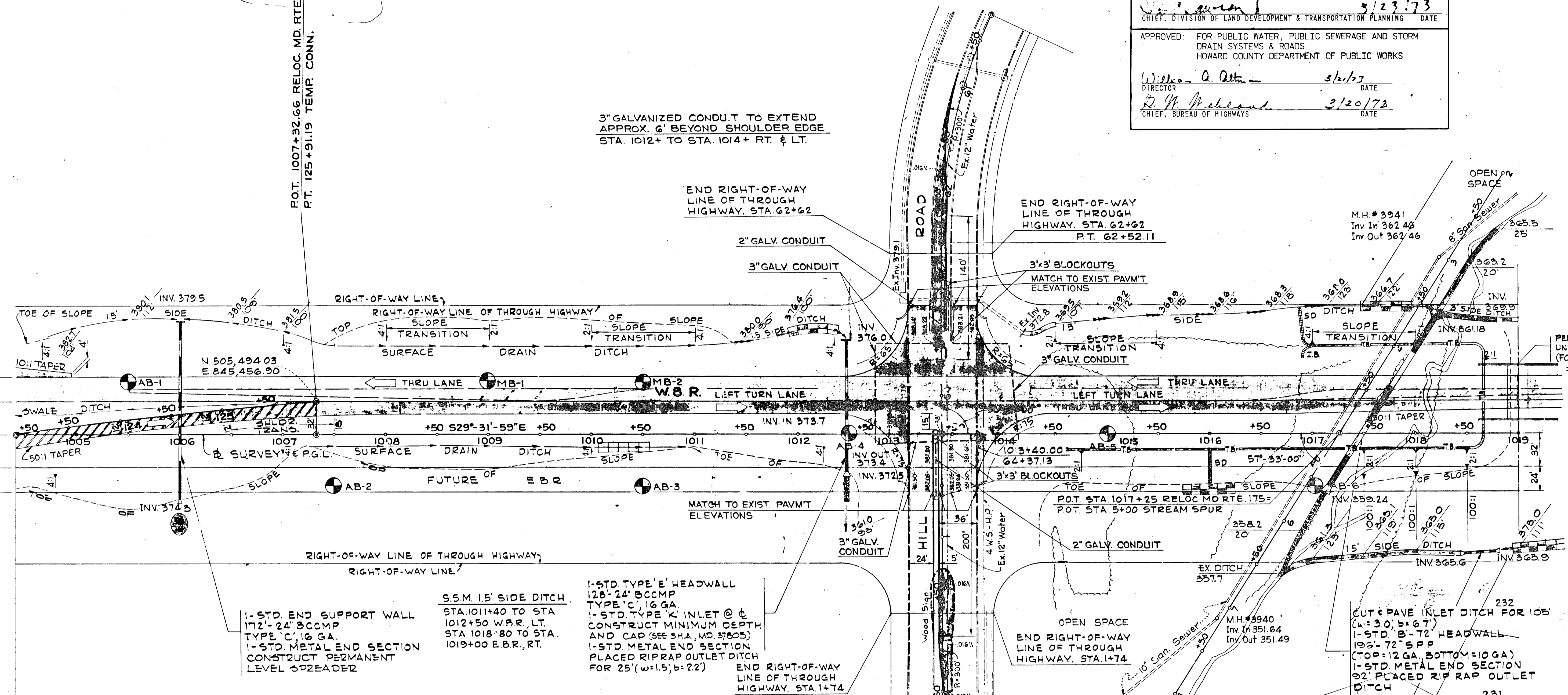
3" GALVANIZED CONDUIT TO EXTEND
APPROX. 6' BEYOND SHOULDER EDGE
STA. 1012+ TO STA. 1014+ RT. & LT.

END RIGHT-OF-WAY
LINE OF THROUGH
HIGHWAY, STA. 62+62

END RIGHT-OF-WAY
LINE OF THROUGH
HIGHWAY, STA. 62+62
P.T. 62+52.11

M.H. # 3941
Inv In 362.46
Inv Out 362.46

MATCH MARK
SEE SHEET NO. 22
24, 32, 24



1- STD. END SUPPORT WALL
172" x 24" CONCMP
TYPE 'C', 16 GA.
1- STD. METAL END SECTION
CONSTRUCT PERMANENT
LEVEL SPREADER

S.S.M. 15' SIDE DITCH
STA. 1011+40 TO STA.
1012+50 W.B.R. LT.
STA. 1018+80 TO STA.
1019+00 E.B.R., RT.

1- STD. TYPE 'E' HEADWALL
128" x 24" CONCMP
TYPE 'C', 16 GA.
1- STD. TYPE 'K' INLET @ C
CONSTRUCT MINIMUM DEPTH
AND CAP (SEE S.H.A. MD. 37805)
1- STD. METAL END SECTION
PLACED RIPRAP OUTLET DITCH
FOR 25' (w=1.5, b=2.2)
END RIGHT-OF-WAY
LINE OF THROUGH
HIGHWAY, STA. 1+74

REMOVAL OF EXISTING COMB. CURB & GUTTER
STA. 2+00 TO STA. 3+00 THUNDER HILL RD. (100 L.F.)
STA. 60+75 TO STA. 63+00 THUNDER HILL RD. (225 L.F.)
(SEE SPECIAL PROVISIONS UNDER CL. 1)

FOR PROFILE RELOC. MD. RTE. 175, SEE SHEET NO. 25
FOR PROFILE TEMPORARY CONN. SEE SHEET NO. 23

STD. TYPE 'A' COMB. CURB & GUTTER
STA. 2+00 TO STA. 3+20 THUNDER HILL RD. (120 L.F.)
STA. 60+90 TO STA. 62+15 THUNDER HILL RD. (125 L.F.)
STA. 63+10 THUNDER HILL RD. (20 L.F.)
STA. 0+30 THUNDER HILL RD. (20 L.F.)

CONCRETE 1.5' SIDE DITCH
STA. 1014+20 TO STA. 1014+50
W.B.R. LT. (w=1.5, b=2.2)
STA. 1016+10 TO STA. 1018+40
W.B.R. RT. (w=1.5, b=2.2)

CONCRETE 3' SIDE DITCH
STA. 1018+25 TO STA. 1018+35 W.B.R. LT.
(b=3.5)

REMOVE EXISTING PAVEMENT
STA. 63+ TO STA. 0+ THUNDERHILL RD.
(1267 SY)
(SEE SPECIAL PROVISIONS UNDER CL. 1)

MONOLITHIC CONCRETE MEDIAN, TYPE 'A', 6.0'
STA. 0+00 TO STA. 2+00 THUNDER HILL RD. (200 L.F.)
STA. 63+65 TO STA. 62+15 THUNDER HILL RD. (140 L.F.)

50D 15' SIDE DITCH
STA. 1014+50 TO STA.
1018+25 W.B.R. LT.

CUT & PAVE INLET DITCH FOR 105'
1- STD. 'B'-72" HEADWALL
192" x 72" S.P.P.
(TOP=12 GA. BOTTOM=10 GA.)
1- STD. METAL END SECTION
92" PLACED RIP RAP OUTLET
DITCH

1- STD. METAL END SECTION
52" x 30" CONCMP TYPE 'C', 14 GA.
1- STD. METAL END SECTION WITH TOE PLATE

APPROVED
PLANNING BOARD
OF HOWARD COUNTY

DATE 10/18/72
[Signature]

VILLAGE OF OAKLAND MILLS
SECTION 4 TALBOTT SPRINGS AREA 3

CENTERLINE - BOOK NO.
TOPG - BOOK NO. 3258-2, 3268-4
CROSS SECTIONS - BOOK NO.
P.W. PLAT NO. 41568, 41569

SCALE PLAN: 1 IN. = 50 FT.

M.H. # 3939
Inv. In 344.03
Inv. Out 343.58

GREEN ASSOCIATES, INC.
CONSULTING ENGINEERS
BALTIMORE, MARYLAND

REVISIONS

STATE OF MARYLAND
STATE ROADS COMMISSION
BUREAU OF HIGHWAY DESIGN
RELOCATED MARYLAND ROUTE 175 - U.S. ROUTE 29 TO LARK BROWN ROAD
CONT. NO. HO-400-178 F.A.P. NO. SHEET NO. 24 OF 75
PREL. TRAC. BY J.A.S. JAN. 1971 FINAL TRAC. BY R.L.B. APRIL 1972

508 72-53C

FED. ROAD DIST. NO.	STATE	FED. AID PROJ. NO.	SHEET NO.	TOTAL SHEETS
2	MD.		26	75

APPROVED: NO WATER OR SEWER
HOWARD COUNTY HEALTH DEPARTMENT
William A. Altman 3/19/73
COUNTY HEALTH OFFICER DATE

APPROVED: HOWARD COUNTY OFFICE OF PLANNING & ZONING
William A. Altman 3/23/73
PLANNING DIRECTOR DATE

APPROVED: FOR PUBLIC WATER, PUBLIC SEWERAGE AND STORM DRAIN SYSTEMS & ROADS
HOWARD COUNTY DEPARTMENT OF PUBLIC WORKS
William A. Altman 3/20/73
DIRECTOR DATE

W. H. McLeod 3/20/73
CHIEF, BUREAU OF HIGHWAYS DATE

B.M. # 22 ELEV. 391.806
BOLT ON FIRE PLUG BLUECOAT LANE. PAINTED YELLOW
172' LT. & STA. 1022+31

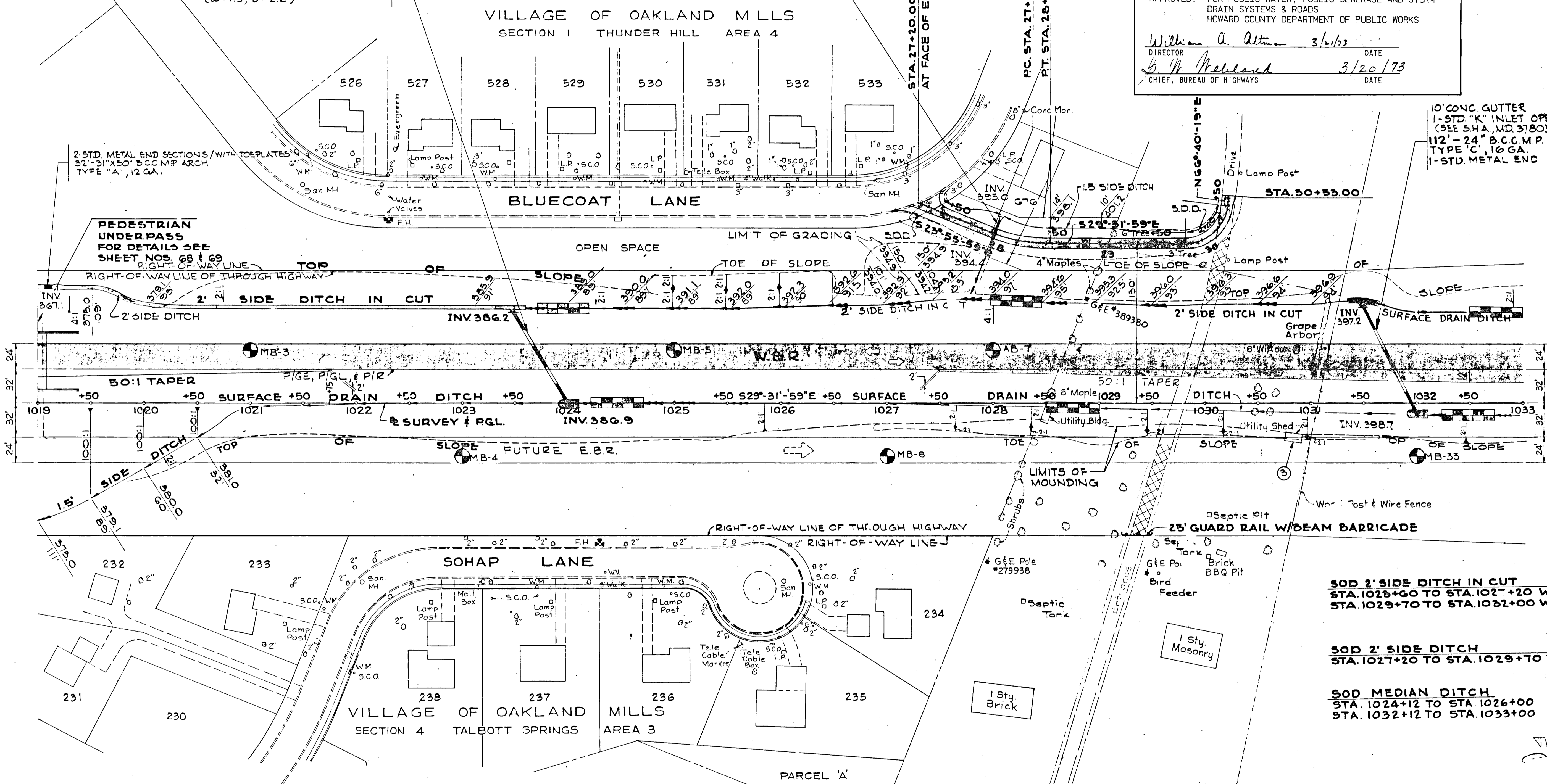
ENTRANCE RD.
Δ=5°36'00"
D=10°00'00"
R=572.96'
T=28.02'
L=56.00'
E=0.64'

10' CONCRETE GUTTER
1-STD. "K" INLET OPEN END (SEE SHA, MD. 37805)
100'-24" B.C.C.M.P.
TYPE "C", 16 GA.
1-STD. METAL END SECTION WITH TOE PLATE
CUT & PAVE OUTLET DITCH FOR 3'
(w=1.5', b=2.2')

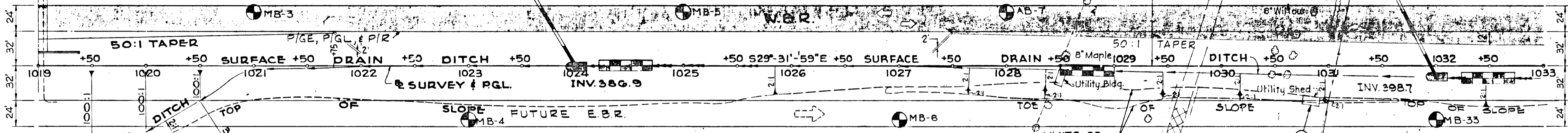
2-STD. METAL END SECTIONS
28'-24" C.M.P. TYPE "A", 16 GA.
CUT & SOD OUTLET DITCH FOR 45'
(w=2.0', b=2.2')

10' CONC. GUTTER
1-STD. "K" INLET OPEN END (SEE SHA, MD. 37805)
112'-24" B.C.C.M.P.
TYPE "C", 16 GA.
1-STD. METAL END SECTION W/TOE PLATE

TO U.S. RTE. 29



PEDESTRIAN UNDERPASS
FOR DETAILS SEE SHEET NOS. 68 & 69
RIGHT-OF-WAY LINE



SOD 2' SIDE DITCH IN CUT
STA. 1025+60 TO STA. 1027+20 W.B.R., LT.
STA. 1029+70 TO STA. 1032+00 W.B.R., LT.

SOD 2' SIDE DITCH
STA. 1027+20 TO STA. 1029+70 W.B.R., LT.

SOD MEDIAN DITCH
STA. 1024+12 TO STA. 1026+00
STA. 1032+12 TO STA. 1033+00

APPROVED
PLANNING BOARD
OF HOWARD COUNTY
DATE 10/10/72
Thomas L. Harris

GUARD RAIL W/BEAM
STA. 1019+40 TO STA. 1020+40 W.B.R., LT. (100LF) (F)
STA. 1019+40 TO STA. 1020+40 W.B.R., RT. (100LF)

CONCRETE 2' SIDE DITCH IN CUT
STA. 1020+20 TO STA. 1023+60 W.B.R., LT.
(w=2.0', b=2.2')
STA. 1031+35 TO STA. 1031+65 W.B.R., LT.
(w=2.0', b=2.2')

CONCRETE 2.0' SIDE DITCH
STA. 1019+20 TO STA. 1020+20 W.B.R., LT.
(w=2.0', b=2.2')

REMOVE EXISTING PAVEMENT; GRADE TO DRAIN; SEE 'D' AND MULCH
STA. 1029+ LT. & RT. (200 SY.)

CENTERLINE - BOOK NO. 3268-4
TOPO - BOOK NO. 3269-4
CROSS SECTIONS - BOOK NO. 3269-4
R/W PLAT NO. 41569, 41570

SCALE 1" = 50 FT.

5.5M 1.5' SIDE DITCH
STA. 1019+00 TO STA. 1019+50 E.B.R., RT.

GRFFN ASSOCIATES, INC.
CONSULTING ENGINEERS
BALTIMORE, MARYLAND

REVISIONS

STATE OF MARYLAND
STATE ROADS COMMISSION
BUREAU OF HIGHWAY DESIGN
RELOCATED MARYLAND ROUTE 175 - U.S. ROUTE 29 TO LARK BROWN ROAD
CONT. NO. 175-4-778 F. A. P. NO. SHEET NO. 26 OF 75
PREL. TRAC. BY J.A.S. JAN. 1971 FINAL TRAC. BY J.B.D. APRIL 1972

B.M. # 107 ELEV. = 355.786
 R.R. SPIKE IN ROOT 28" BEECH
 200' RT. & STATION 1088+50

LONGREACH
 VILLAGE CENTER

APPROVED: NO WATER OR SEWER & WASTE WATER
 HOWARD COUNTY HEALTH DEPARTMENT
 COUNTY HEALTH OFFICER DATE

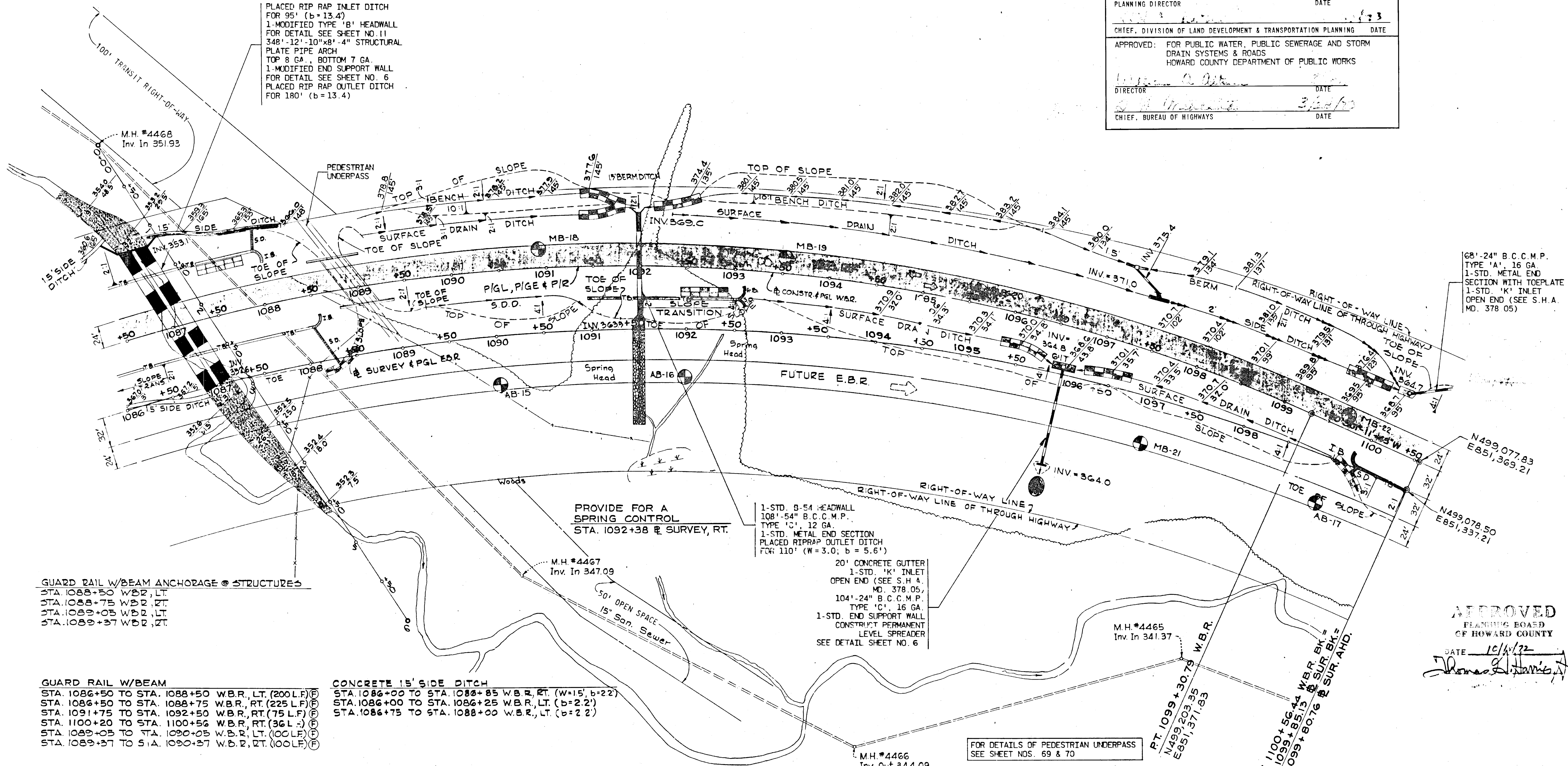
APPROVED: HOWARD COUNTY OFFICE OF PLANNING & ZONING
 PLANNING DIRECTOR DATE

APPROVED: FOR PUBLIC WATER, PUBLIC SEWERAGE AND STORM
 DRAIN SYSTEMS & ROADS
 HOWARD COUNTY DEPARTMENT OF PUBLIC WORKS
 DIRECTOR DATE
 CHIEF, BUREAU OF HIGHWAYS DATE

FED. ROAD DIST. NO.	STATE	FED. AID PP. A. NO.	SHEET NO.	TOTAL SHEETS
2	MD.		36	75

TO U.S. RTE. 29

PLACED RIP RAP INLET DITCH FOR 95' (b=13.4)
 1-MODIFIED TYPE 'B' HEADWALL FOR DETAIL SEE SHEET NO. 11
 348'-12"-10"x8'-4" STRUCTURAL PLATE PIPE ARCH TOP 8 GA., BOTTOM 7 GA.
 1-MODIFIED END SUPPORT WALL FOR DETAIL SEE SHEET NO. 6
 PLACED RIP RAP OUTLET DITCH FOR 180' (b=13.4)



GUARD RAIL W/BEAM ANCHORAGE @ STRUCTURES
 STA. 1088+50 TO STA. 1088+75 W.B.R., LT.
 STA. 1088+75 TO STA. 1088+75 W.B.R., RT.
 STA. 1089+05 TO STA. 1089+05 W.B.R., LT.
 STA. 1089+05 TO STA. 1089+37 W.B.R., RT.

GUARD RAIL W/BEAM
 STA. 1086+50 TO STA. 1088+50 W.B.R., LT. (200 L.F.)
 STA. 1086+50 TO STA. 1088+75 W.B.R., RT. (225 L.F.)
 STA. 1091+75 TO STA. 1092+50 W.B.R., RT. (75 L.F.)
 STA. 1100+20 TO STA. 1100+56 W.B.R., RT. (36 L.F.)
 STA. 1089+05 TO STA. 1090+05 W.B.R., LT. (100 L.F.)
 STA. 1089+37 TO STA. 1090+37 W.B.R., RT. (100 L.F.)

CONCRETE 15' SIDE DITCH
 STA. 1086+00 TO STA. 1088+85 W.B.R., RT. (W=15', b=22')
 STA. 1086+00 TO STA. 1086+25 W.B.R., LT. (b=2.2')
 STA. 1086+75 TO STA. 1088+00 W.B.R., LT. (b=2.2')

① SURVEY
 Δ = 70°-07'-04"
 O = 3°-00'-00"
 R = 1909.86'
 T = 1340.23'
 L = 2337.26'
 E = 423.33'
 SE = 0.055 FT./FT.

② W.B.R.
 Δ = 70°-07'-04"
 O = 3°-15'-00"
 R = 1762.95'
 T = 1237.13'
 L = 2157.47'
 E = 390.77'
 SE = 0.055 FT./FT.

50D 2' SIDE DITCH IN CUT
 STA. 1098+50 TO STA. 1099+50 W.B.R., LT.

50D 1.5' BERM DITCH
 STA. 1098+00 TO STA. 1099+50 W.B.R., LT.

FOR DETAILS OF PEDESTRIAN UNDERPASS
 SEE SHEET NOS. 69 & 70

FOR PROFILE SEE SHEET NO. 37

68'-24" B.C.C.M.P.
 TYPE 'A', 16 GA.
 1-STD. METAL END SECTION WITH TOEPLATE
 1-STD. 'K' INLET OPEN END (SEE S.H.A. MD. 378.05)

APPROVED
 PLANNING BOARD OF HOWARD COUNTY
 DATE 10/11/72
 [Signature]

CENTERLINE - BOOK NO.
 TOPO - BOOK NO. 3268-1
 CROSS SECTIONS - BOOK NO. 3268-3
 R/W PLAT NO. 41575, 41576

SCALE 1" = 50 FT.

GREEN ASSOCIATES, INC.
 CONSULTING ENGINEERS
 BALTIMORE, MARYLAND

REVISIONS

STATE OF MARYLAND
 STATE ROADS COMMISSION
 BUREAU OF HIGHWAY DESIGN
 RELOCATED MARYLAND ROUTE 175 - U.S. ROUTE 29 TO LARK BROWN ROAD
 CONT. NO. HO-100-4-778 F. A. P. NO. SHEET NO. 36 OF 75
 PREL. TRAC. BY J.A.S. JAN. 1971 FINAL TRAC. BY R.L.B. APRIL 1972

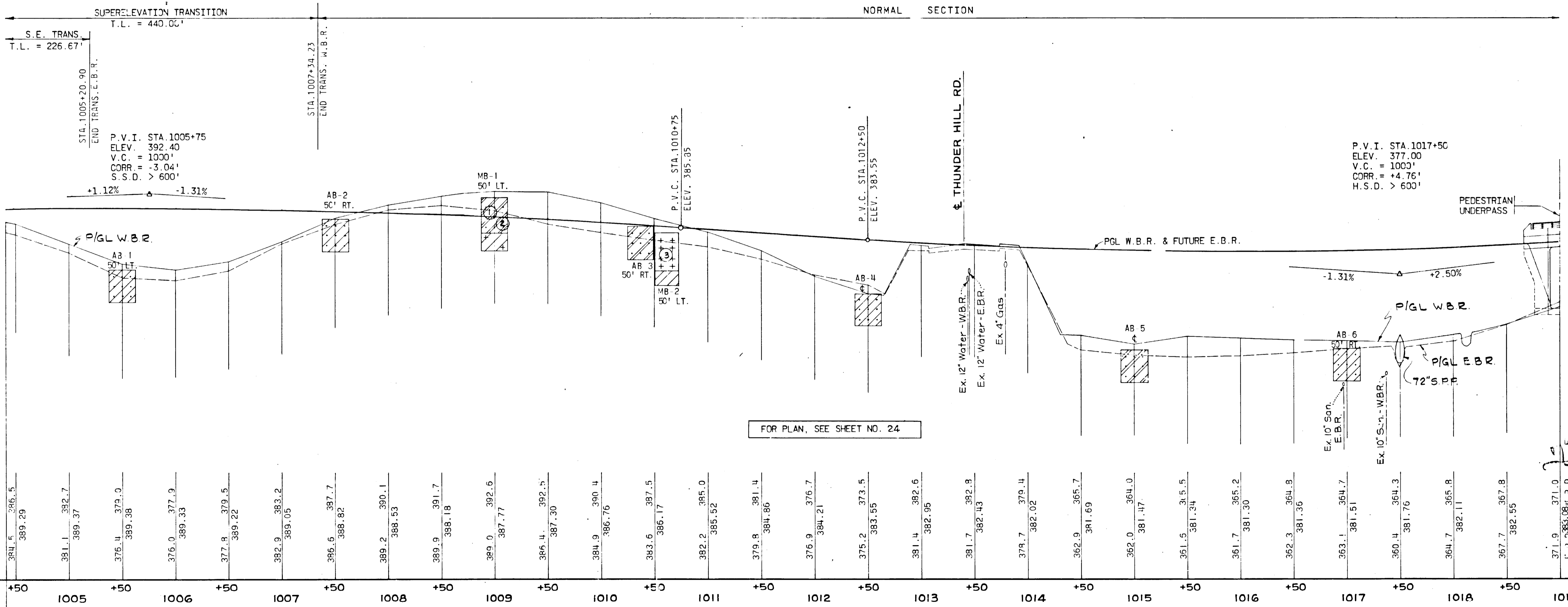
APPROVED: NO WATER OR SEWER
HOWARD COUNTY HEALTH DEPARTMENT
C.P. ... 7/19/73
COUNTY HEALTH OFFICER DATE

APPROVED: HOWARD COUNTY OFFICE OF PLANNING & ZONING
... 3-23-73
PLANNING DIRECTOR DATE

APPROVED: FOR PUBLIC WATER, PUBLIC SEWERAGE AND STORM
DRAIN SYSTEMS & ROADS
HOWARD COUNTY DEPARTMENT OF PUBLIC WORKS
William A. Altman 3/21/73
DIRECTOR DATE

D. K. ... 3/20/73
CHIEF, BUREAU OF HIGHWAYS DATE

FED. ROAD DIV. NO.	STATE	FED. AID PROJ. NO.	SHEET NO.	TOTAL SHEETS
2	MD.		25	75



STATION	ELEVATION	STATION	ELEVATION	STATION	ELEVATION	STATION	ELEVATION	STATION	ELEVATION	STATION	ELEVATION	STATION	ELEVATION	STATION	ELEVATION	STATION	ELEVATION	STATION	ELEVATION	STATION	ELEVATION																																						
+50	389.29	1005	389.37	+50	389.33	1006	389.22	+50	389.05	1007	388.82	+50	388.53	1008	388.18	+50	387.77	1009	387.30	+50	386.76	1010	386.17	+50	385.52	1011	384.86	+50	384.21	1012	383.55	+50	382.95	1013	382.43	+50	381.69	1014	381.47	+50	381.34	1015	381.30	+50	381.36	1016	381.51	+50	381.76	1017	381.8	+50	381.8	1018	381.8	+50	381.8	1019	381.8

STA. 123+00.89 BK. =
STA. 1004+40.89 AHD.
ELEV 389.27

E.B.R. & W.B.R.

SCALE { PROFILE: HOR. 1 IN. = 50 FT.; VERT. 1 IN. = 10 FT.

FOR PLAN, SEE SHEET NO. 24

APPROVED
PLANNING BOARD
OF HOWARD COUNTY
DATE 10/18/72
Thomas D. ...

GREEN ASSOCIATES, INC. CONSULTING ENGINEERS BALTIMORE, MARYLAND	REVISIONS	STATE OF MARYLAND STATE ROADS COMMISSION BUREAU OF HIGHWAY DESIGN RELOCATED MARYLAND ROUTE 175 - U.S. ROUTE 29 TO LARK BROWN ROAD CONT. NO. HO-400-4-778 F. A. P. NO. SHEET NO. 25 OF 75 PREL. TRAC. BY FINAL TRAC. BY

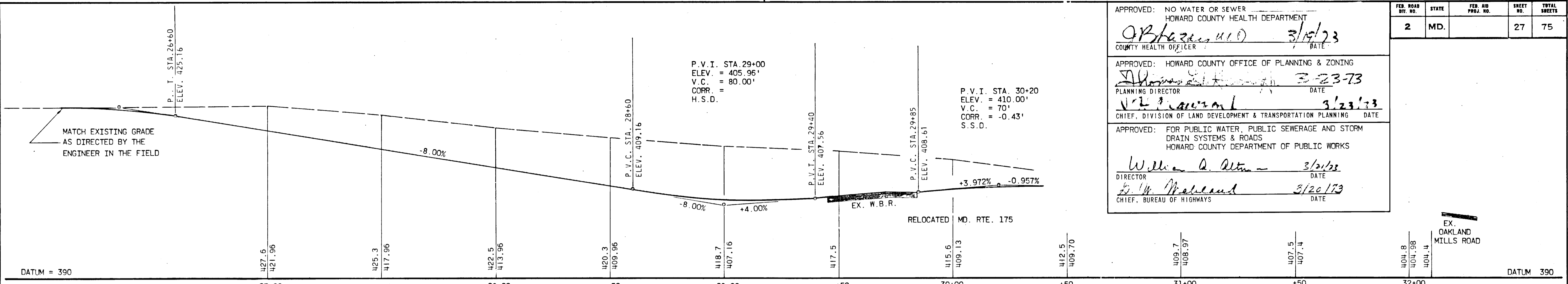
FED. ROAD DIV. NO.	STATE	FED. AID PROJ. NO.	SHEET NO.	TOTAL SHEETS
2	MD.		27	75

APPROVED: NO WATER OR SEWER
HOWARD COUNTY HEALTH DEPARTMENT
OB... 3/19/73
COUNTY HEALTH OFFICER DATE

APPROVED: HOWARD COUNTY OFFICE OF PLANNING & ZONING
... 3-23-73
PLANNING DIRECTOR DATE

APPROVED: FOR PUBLIC WATER, PUBLIC SEWERAGE AND STORM DRAIN SYSTEMS & ROADS
HOWARD COUNTY DEPARTMENT OF PUBLIC WORKS
William A. Alt... 3/21/73
DIRECTOR DATE

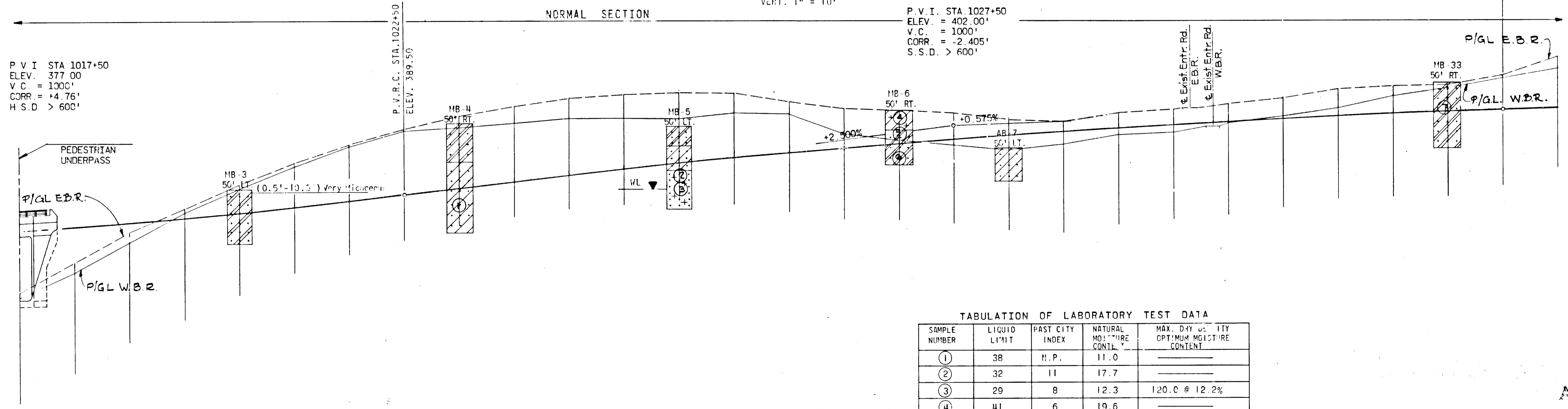
... 3/20/73
CHIEF, BUREAU OF HIGHWAYS DATE



OAKLAND MILLS ROAD CONNECTION

SCALE: HORZ. 1" = 20'
VERT. 1" = 10'

FOR PLAN SEE SHEET NO. 28

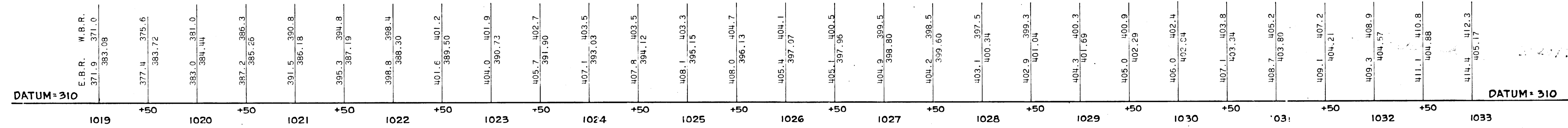


TABULATION OF LABORATORY TEST DATA

SAMPLE NUMBER	LIQUID LIMIT	PAST CITY INDEX	NATURAL MOISTURE CONTENT	MAX. DRY UNIT WEIGHT OPTIMUM MOISTURE CONTENT
①	38	N.P.	11.0	
②	32	11	17.7	
③	29	8	12.3	120.C @ 12.2%
④	41	6	19.6	
⑤	31	2	17.7	
⑥			21.4	
⑦	24	N.P.		

FOR PLAN, SEE SHEET NO. 26

APPROVED
PLANNING BOARD
OF HOWARD COUNTY
DATE 3/21/73
James A. Jones



E.B.R. & W.B.R.

SCALE: PROFILE: HOR. 1 IN. = 50 FT.; VERT. 1 IN. = 10 FT.

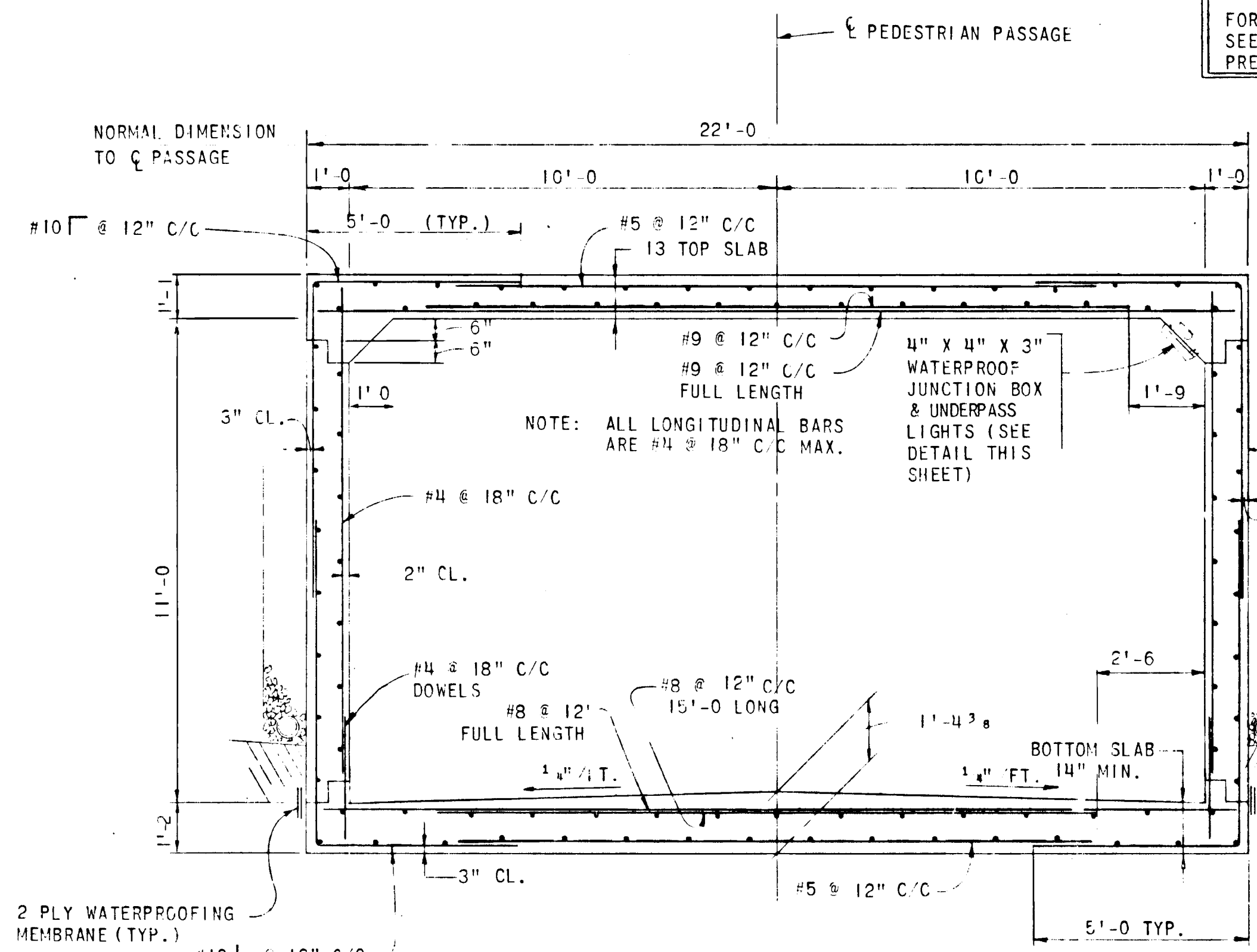
GREEN ASSOCIATES, INC.
CONSULTING ENGINEERS
BALTIMORE, MARYLAND

REVISIONS

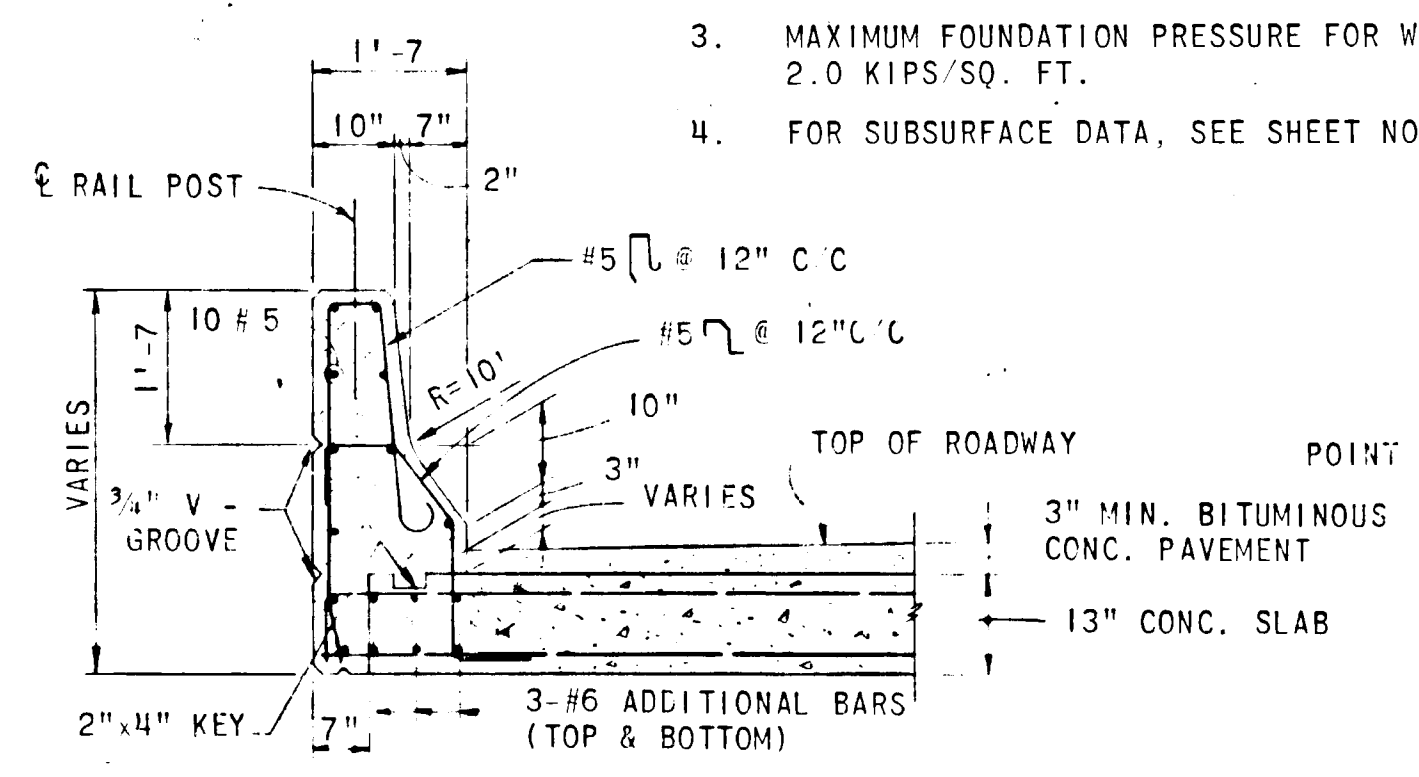
STATE OF MARYLAND
STATE ROADS COMMISSION
BUREAU OF HIGHWAY DESIGN
RELOCATED MARYLAND ROUTE 175 - U.S. ROUTE 29 TO LARK BROWN ROAD
CONT. NO. 10-400-4 778 F. A. P. NO. SHEET NO. 27 OF 75
PREL. TRAC. BY: FINAL TRAC. BY:

NOTE:
FOR TOP OF ROADWAY ELEVATIONS
SEE GENERAL PLAN OF INDIVIDUAL
PEDESTRIAN PASSAGE

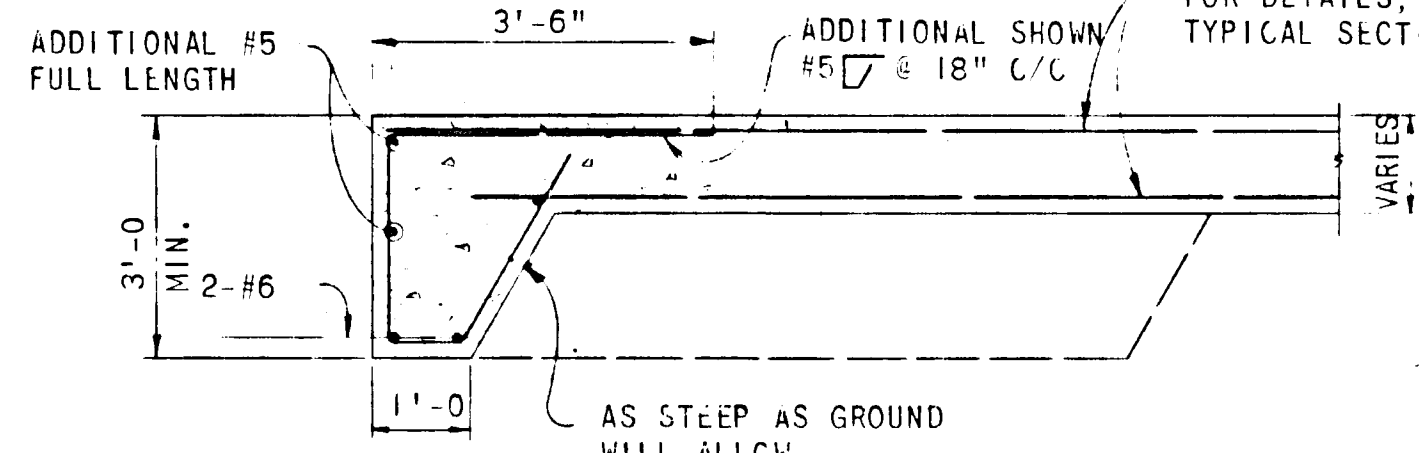
- NOTE:
- FOR GENERAL NOTES, SEE SHEET NO. 68
 - FOR RAIL POST SPACING, SEE GENERAL PLAN OF INDIVIDUAL PEDESTRIAN PASSAGE.
 - MAXIMUM FOUNDATION PRESSURE FOR WINGWALLS 2.0 KIPS/SQ. FT.
 - FOR SUBSURFACE DATA, SEE SHEET NO. 68 AND NO. 69.



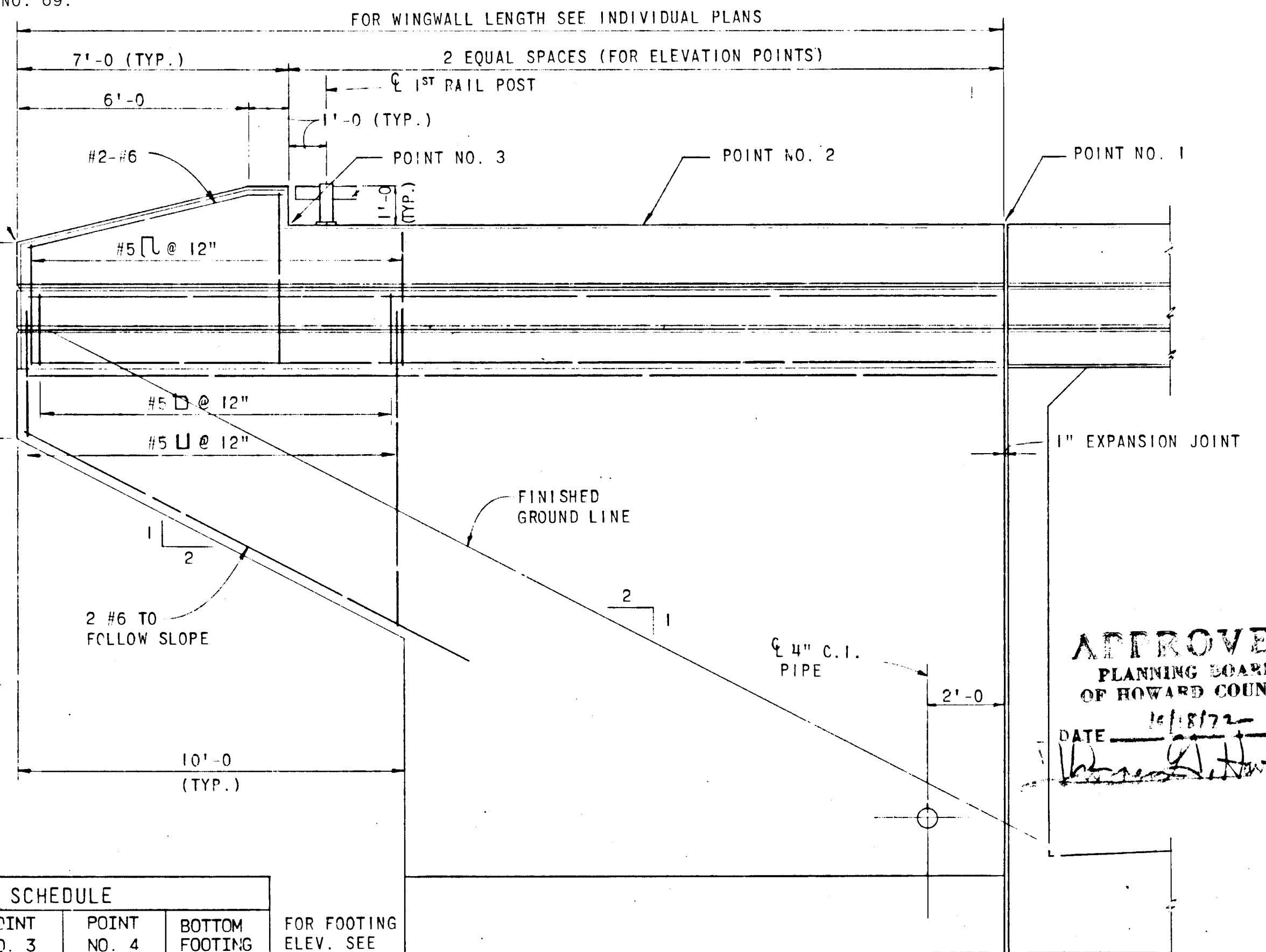
TYPICAL SECTION THRU PASSAGE
SCALE: 3/8" = 1'-0"



TOP SLAB AND PARAPET DETAIL
SCALE: 1/2" = 1'-0"



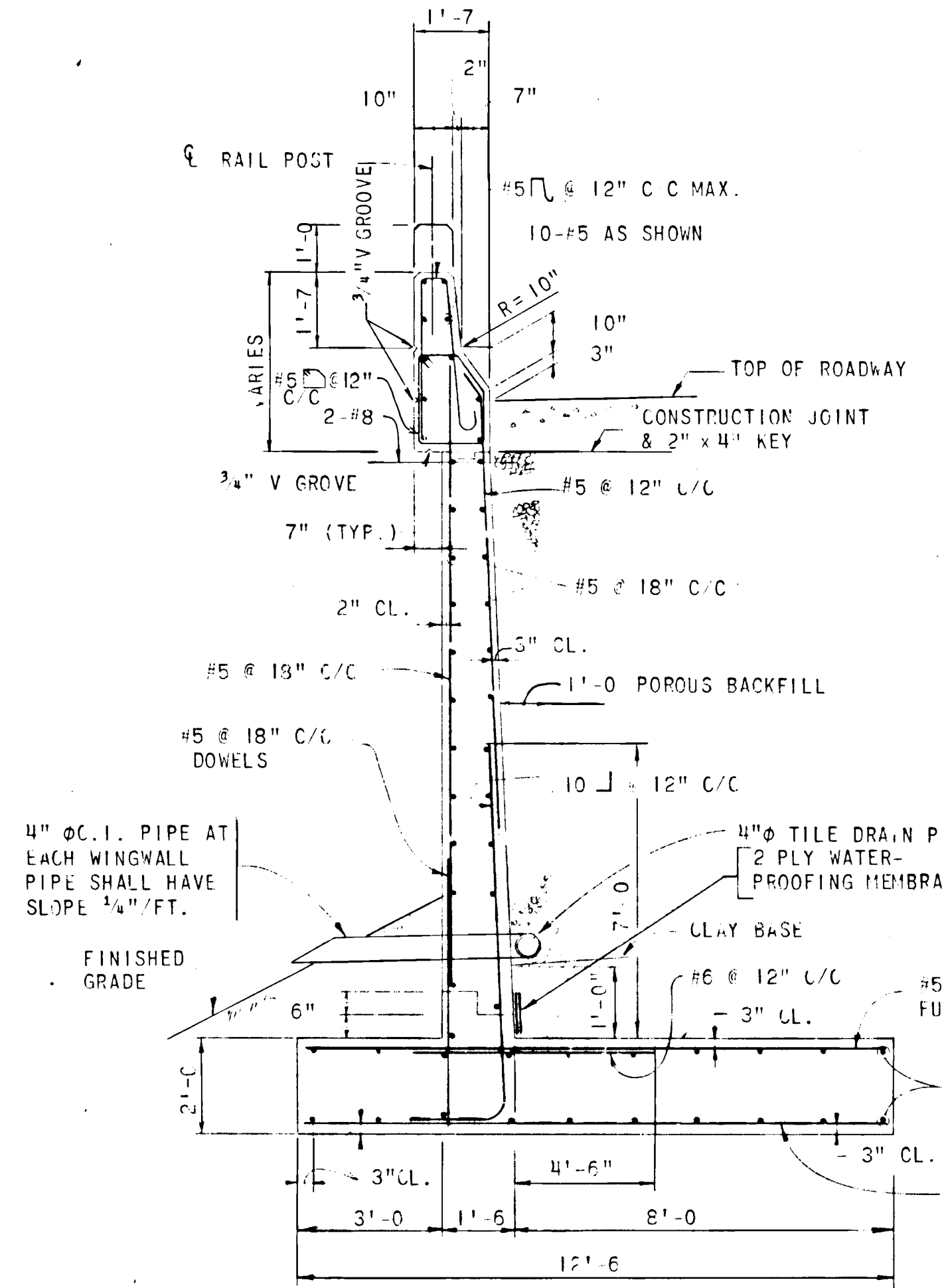
BOTTOM SLAB SECTION "A-A" (TOE WALL)
SCALE: 1/2" = 1'-0"



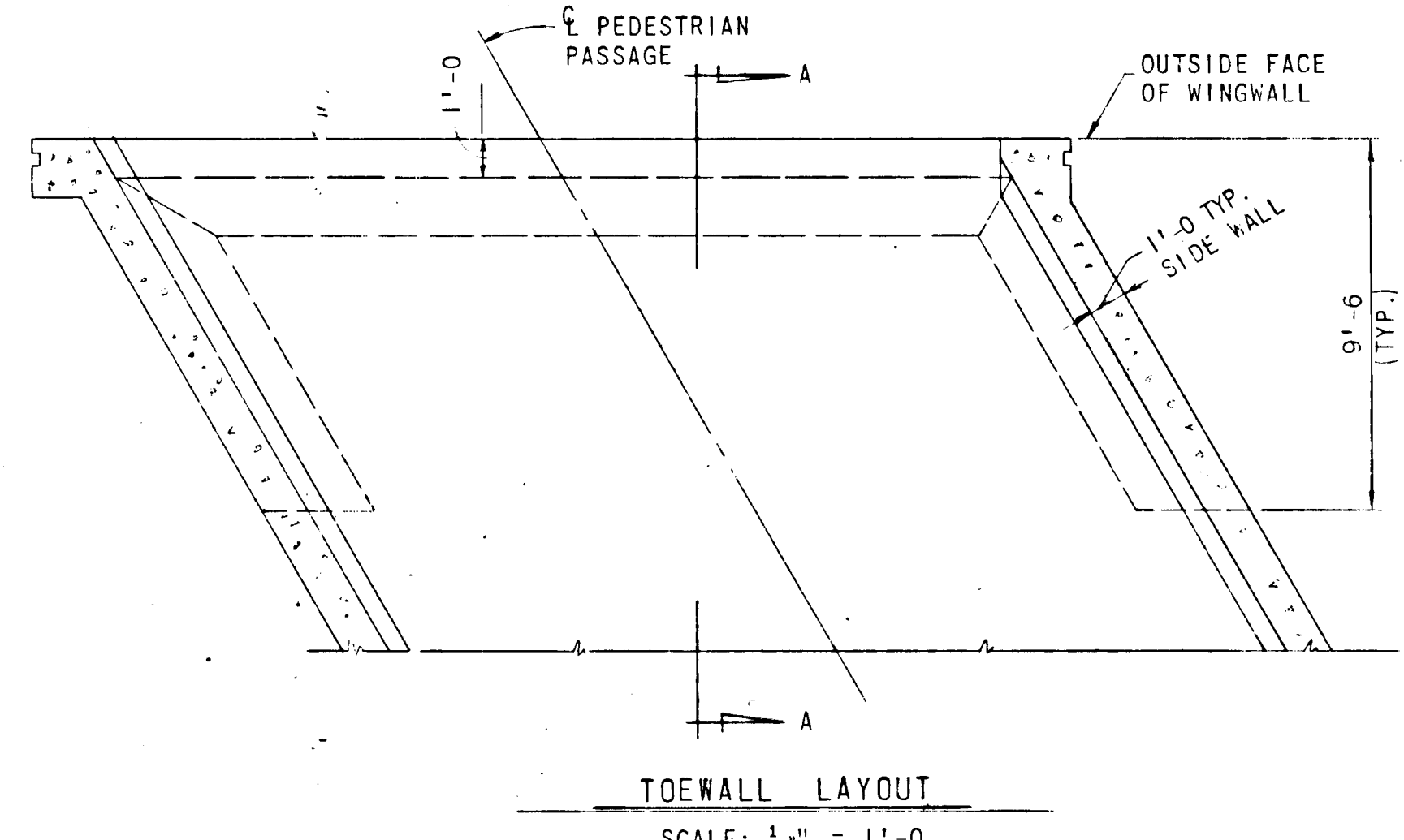
WINGWALL ELEVATION
SCALE: 3/8" = 1'-0"

WINGWALL ELEVATION SCHEDULE					
LOCATION	POINT NO. 1	POINT NO. 2	POINT NO. 3	POINT NO. 4	BOTTOM FOOTING
PASSAGE AT STA. 1019+	384.64	385.54	384.44	382.85	366.55
WINGWALL "A"	384.90	385.02	385.15	383.82	366.55
WINGWALL "B"	385.21	385.11	385.01	383.52	367.16
WINGWALL "C"	385.47	385.59	385.72	384.39	367.16
WINGWALL "A"	382.26	382.33	382.50	382.16	363.98
WINGWALL "B"	382.01	381.91	381.81	381.32	363.98
WINGWALL "C"	379.38	379.98	380.08	379.74	361.55
WINGWALL "D"	379.62	379.50	379.38	378.89	361.55

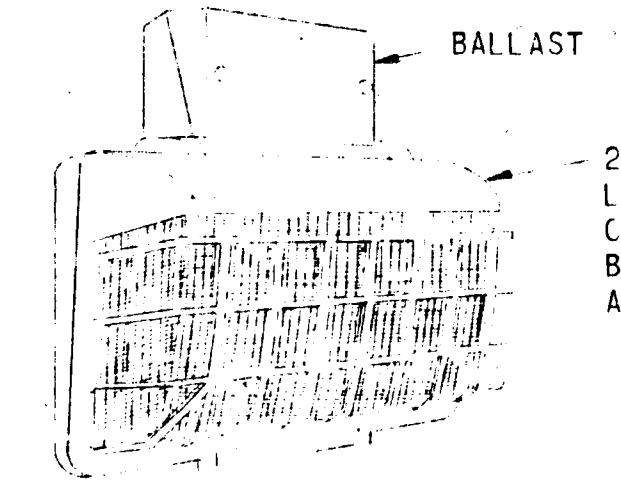
FOR FOOTING ELEV. SEE SCHEDULE THIS SHEET



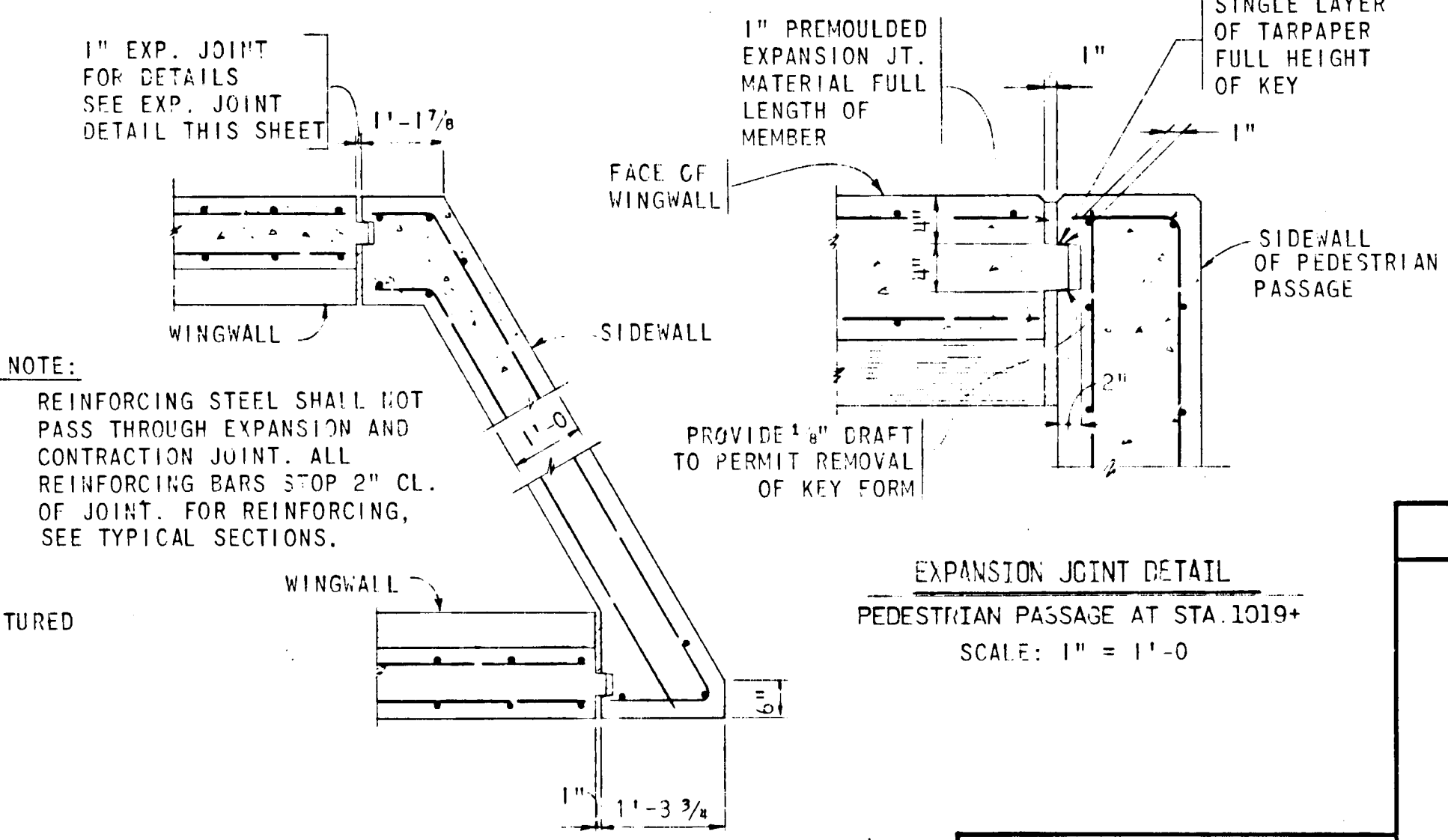
TYPICAL WINGWALL SECTION
SCALE: 3/8" = 1'-0"



TOEWALL LAYOUT
SCALE: 1/4" = 1'-0"



UNDERPASS LIGHT DETAIL
NO SCALE



EXPANSION JOINTS
PEDESTRIAN PASSAGE AT STA. 1039+
SCALE: 1/2" = 1'-0"

EXPANSION JOINT DETAIL
PEDESTRIAN PASSAGE AT STA. 1019+
SCALE: 1" = 1'-0"

APPROVED: NO WATER OR SEWER
HOWARD COUNTY HEALTH DEPARTMENT
COUNTY HEALTH OFFICER
DATE

APPROVED: HOWARD COUNTY OFFICE OF PLANNING & ZONING
PLANNING DIRECTOR
DATE 3-23-73

APPROVED: FOR PUBLIC WATER, PUBLIC SEWERAGE AND STORM DRAIN SYSTEMS & ROADS
HOWARD COUNTY DEPARTMENT OF PUBLIC WORKS
DIRECTOR
DATE 3/20/73

REVISIONS

STATE OF MARYLAND
STATE HIGHWAY ADMINISTRATION
BALTIMORE, MD.
RELOCATED MD. ROUTE 175 OVERPASS
PEDESTRIAN PASSAGES
STA. 1019+ AND ST. 1089+
WINGWALL AND PASSAGE DETAIL

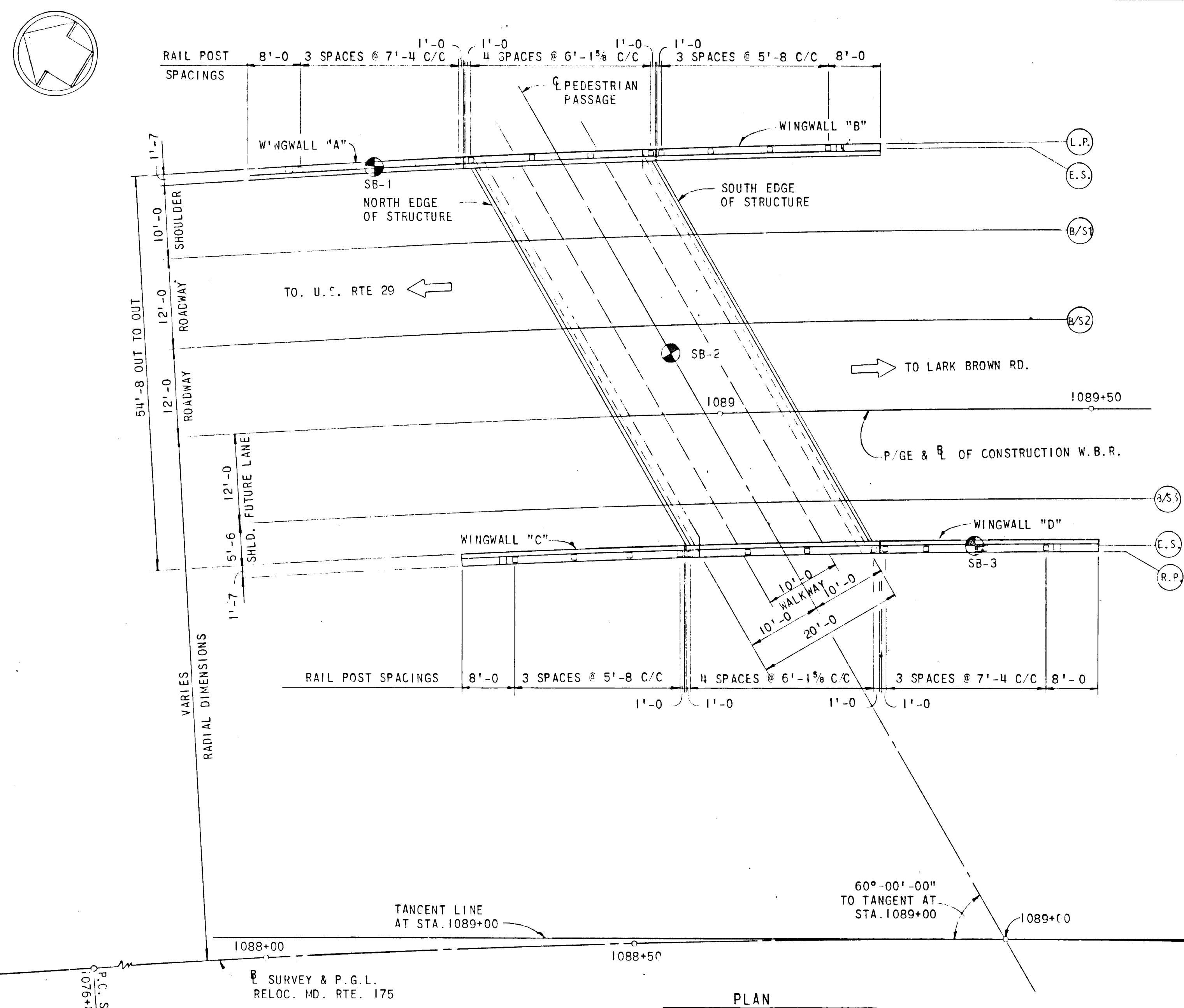
SCALE AS NOTED DATE APRIL 1972 CONTRACT HQ-400-1-778

MADE BY L.J.W.
TRACED BY V.S.K.
CHECKED BY M.J.S. & L.J.W.

GREEN ASSOCIATES INC.
CONSULTING ENGINEERS
BALTIMORE, MARYLAND

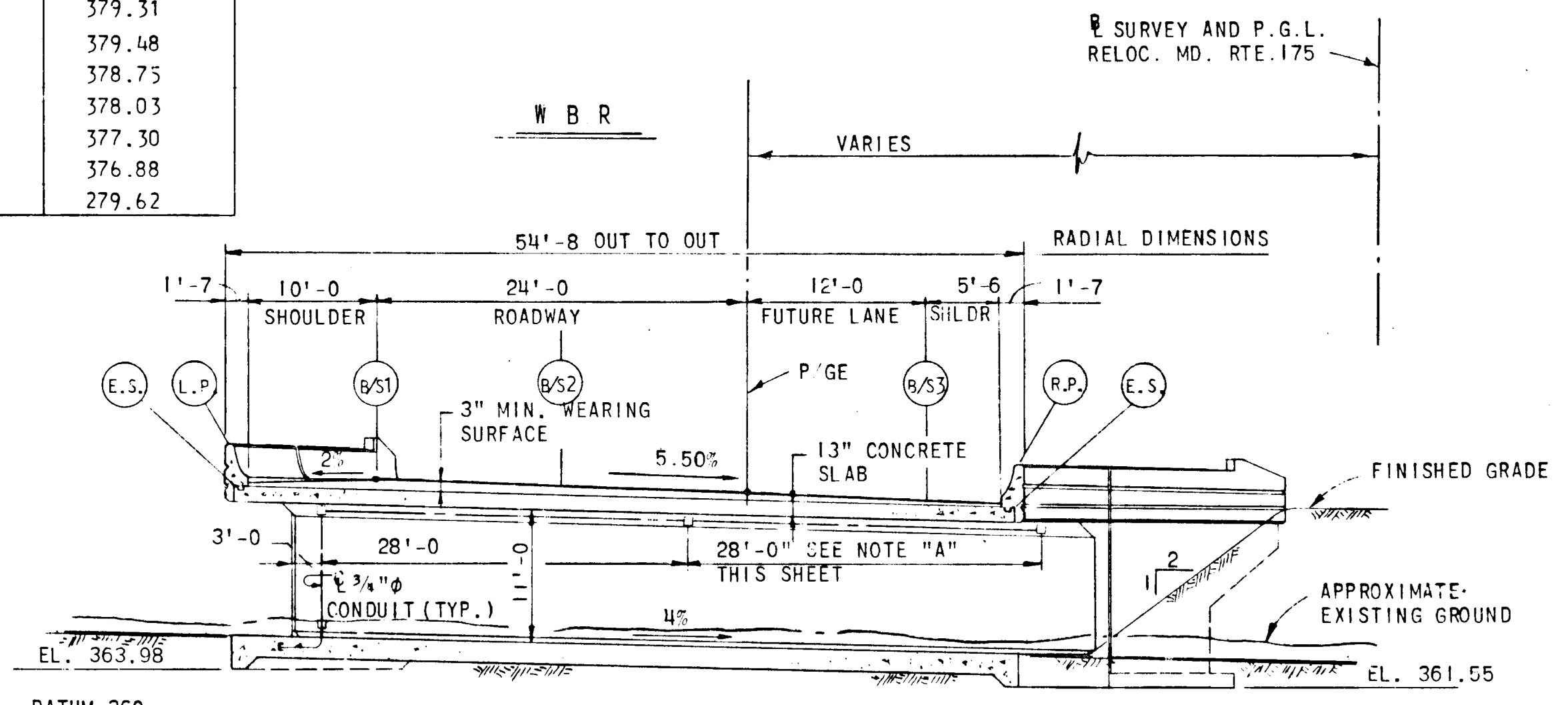
SHEET NO. 70 OF

FED. ROAD DIV. NO.	STATE	FED. AID PROJ. NO.	SHEET NO.	TOTAL SHEETS
2	MD.		69	



LOCATION	NORTH EDGE OF STRUCTURE	℄ OF PEDESTRIAN PASSAGE	SOUTH EDGE OF STRUCTURE
L.P.	382.25	382.11	382.01
E.S.	379.55	379.43	379.31
B/S1	379.72	379.60	379.48
B/S2	379.00	378.88	378.75
P/GE	378.28	378.15	378.03
B/S3	377.55	377.42	377.30
E.S.	377.13	377.00	376.88
R.P.	379.88	379.75	279.62

CURVE DATA
 ℄ OF CONSTRUCTION W.B.R.
 Δ = 70°-07'-04.0"
 D = 3°-15'-00"
 R = 1762.95'
 T = 1237.13'
 L = 2157.47'
 E = 390.77'



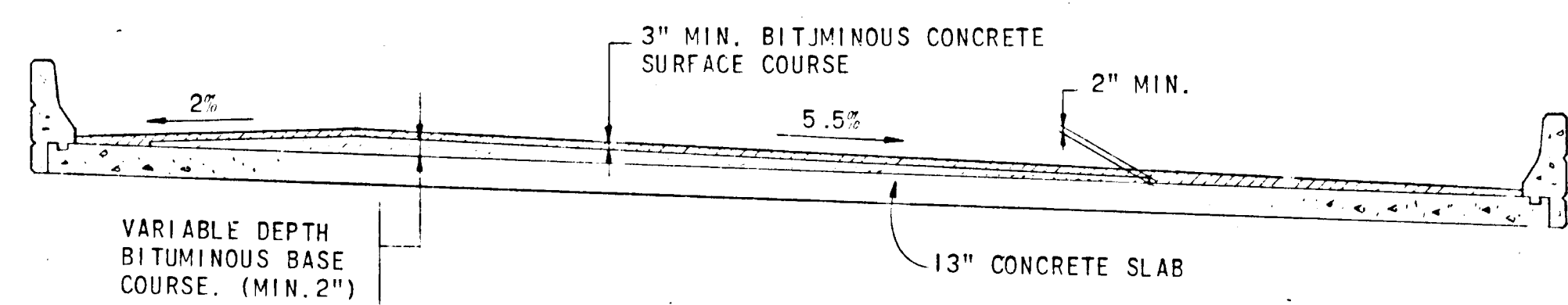
TRANSVERSE SECTION
 SCALE: 1" = 10'-0"

NOTE "A"
 PROVIDE 4" X 4" X 3" WATERPROOF JUNCTION BOX & UNDERPASS LIGHTS. (ONE SIDE OF PASSAGEWAY ONLY) (SEE SHEET 70 FOR DETAIL)

ELEVATION	BORING NO. SB-1 PEDESTRIAN UNDERPASS STA. 1088+20 150' LT. FROM ℄ SURVEY RELOC. MD. RTE. 175			BORING NO. SB-2 PEDESTRIAN UNDERPASS STA. 1088+55 78' LT. FROM ℄ SURVEY RELOC. MD. RTE. 175			BORING NO. SB-2 PEDESTRIAN UNDERPASS STA. 1088+97 53' LT. FROM ℄ SURVEY RELOC. MD. RTE. 175		
	1	2	3	1	2	3	1	2	3
370.0									
360.0	23	2		75	2		34	2	
	19	3		51	3		54	3	
							77	4	
350.0	12	24	4	51	4				

APPROVED
 PLANNING BOARD
 OF HOWARD COUNTY
 DATE 3/19/73

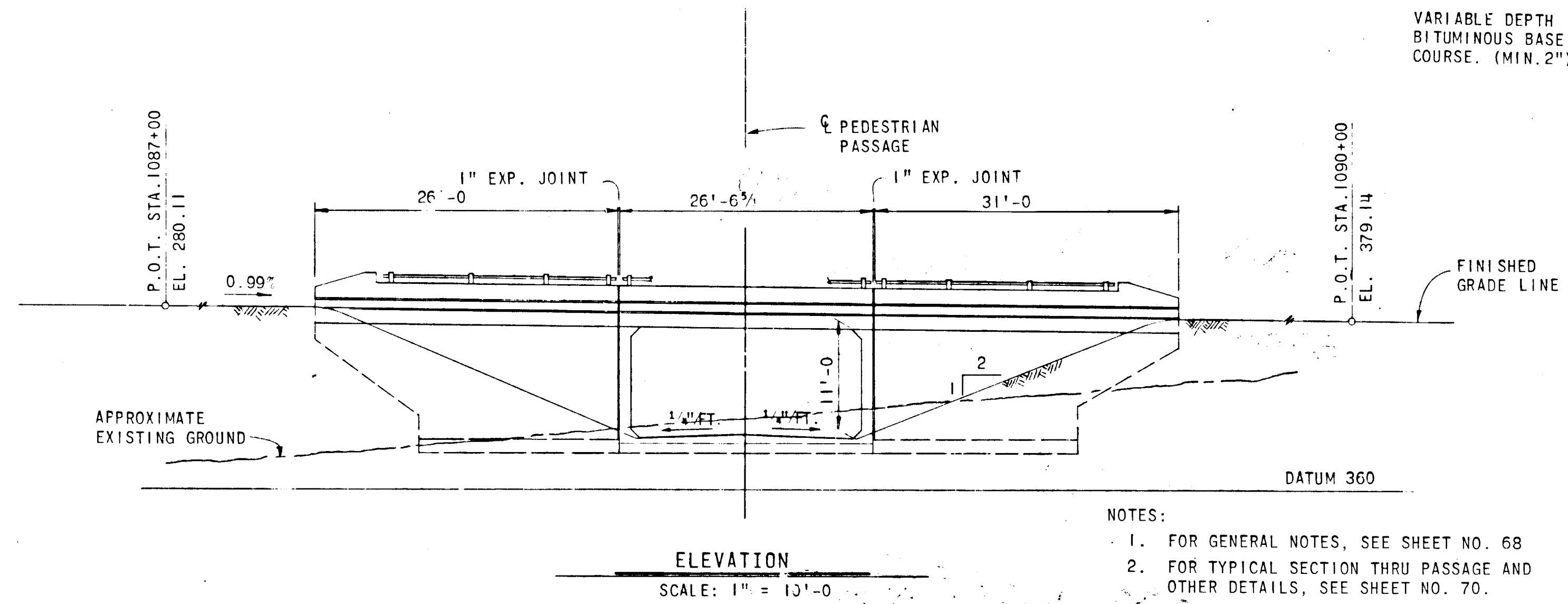
CURVE DATA
 ℄ SURVEY RELOC. MD. RTE. 175
 Δ = 70°-07'-04.0"
 I = 30'-00'-00"
 R = 1909.86
 T = 1340.23
 L = 2337.26
 E = 423.33



PAVEMENT SECTION

LEGEND

DEPTH IN FEET BELOW SURFACE	BLOCKS/FOOT ON SPOON	SAMPLE NO.	ROCK CORE RECOVERY	SOIL DESCRIPTION
1				HAMMER DROP 30 IN.
2				HAMMER WEIGHT 140 LBS.
3				PIPE SIZE 2.0 IN.
4				HOLE DIA. 6.0 IN.
5				BORING METHOD H.S.A. (HOLLOW STEM AUGERS.)



ELEVATION
 SCALE: 1" = 10'-0"

- NOTES:**
- FOR GENERAL NOTES, SEE SHEET NO. 68
 - FOR TYPICAL SECTION THRU PASSAGE AND OTHER DETAILS, SEE SHEET NO. 70.
 - FOR WINGWALL ELEVATION AND WINGWALL DETAILS, SEE SHEET NO. 70

APPROVED: NO WATER OR SEWER HOWARD COUNTY HEALTH DEPARTMENT
 COUNTY HEALTH OFFICER: [Signature] DATE 3/19/73

APPROVED: HOWARD COUNTY OFFICE OF PLANNING & ZONING
 PLANNING DIRECTOR: [Signature] DATE 3-23-73

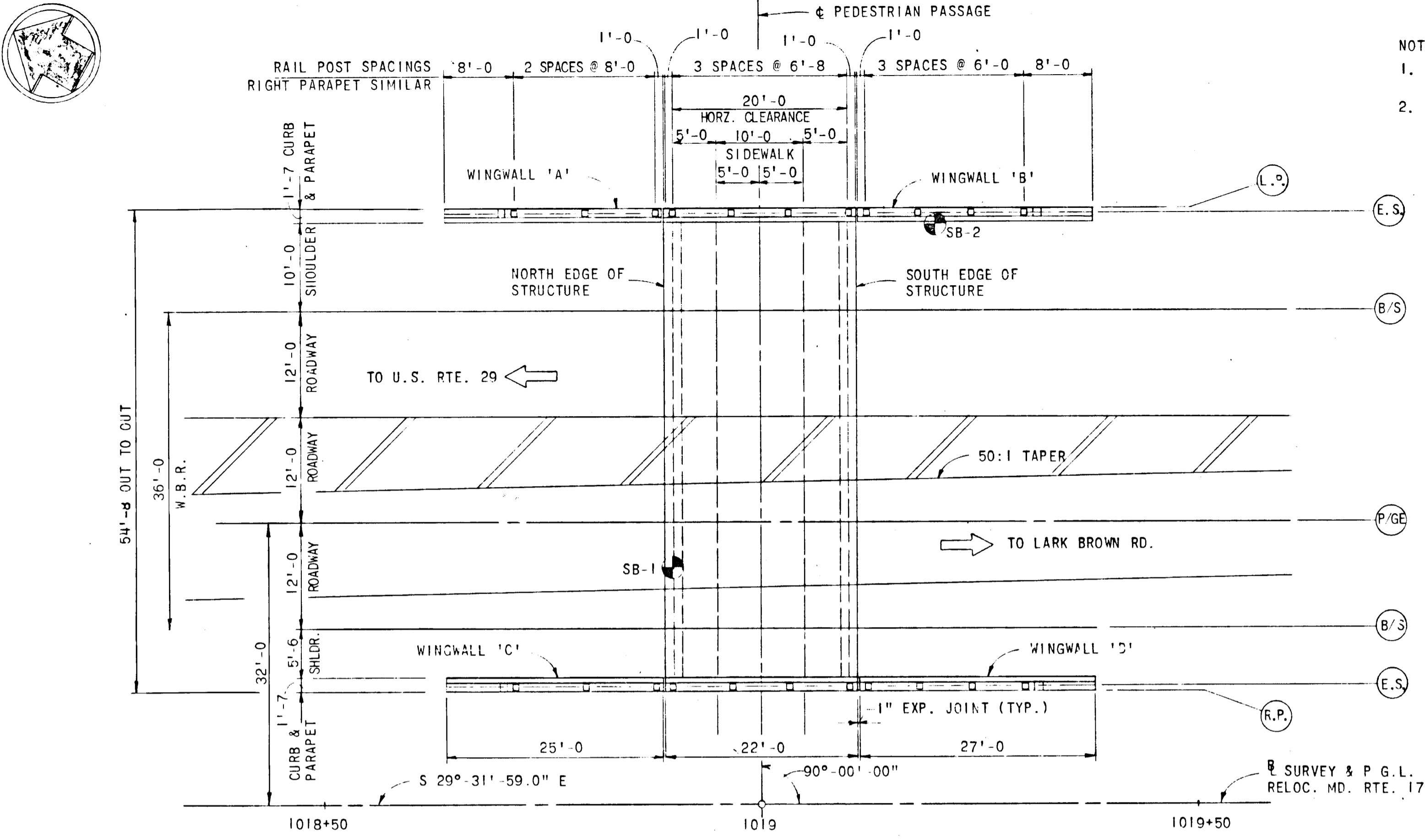
APPROVED: FOR PUBLIC WATER, PUBLIC SEWERAGE AND STORM DRAIN SYSTEMS & ROADS HOWARD COUNTY DEPARTMENT OF PUBLIC WORKS
 CHIEF, DIVISION OF LAND DEVELOPMENT & TRANSPORTATION PLANNING: [Signature] DATE 3/23/73

APPROVED: [Signature] DATE 3/20/73
 DIRECTOR: [Signature] DATE 3/20/73
 CHIEF, BUREAU OF HIGHWAYS

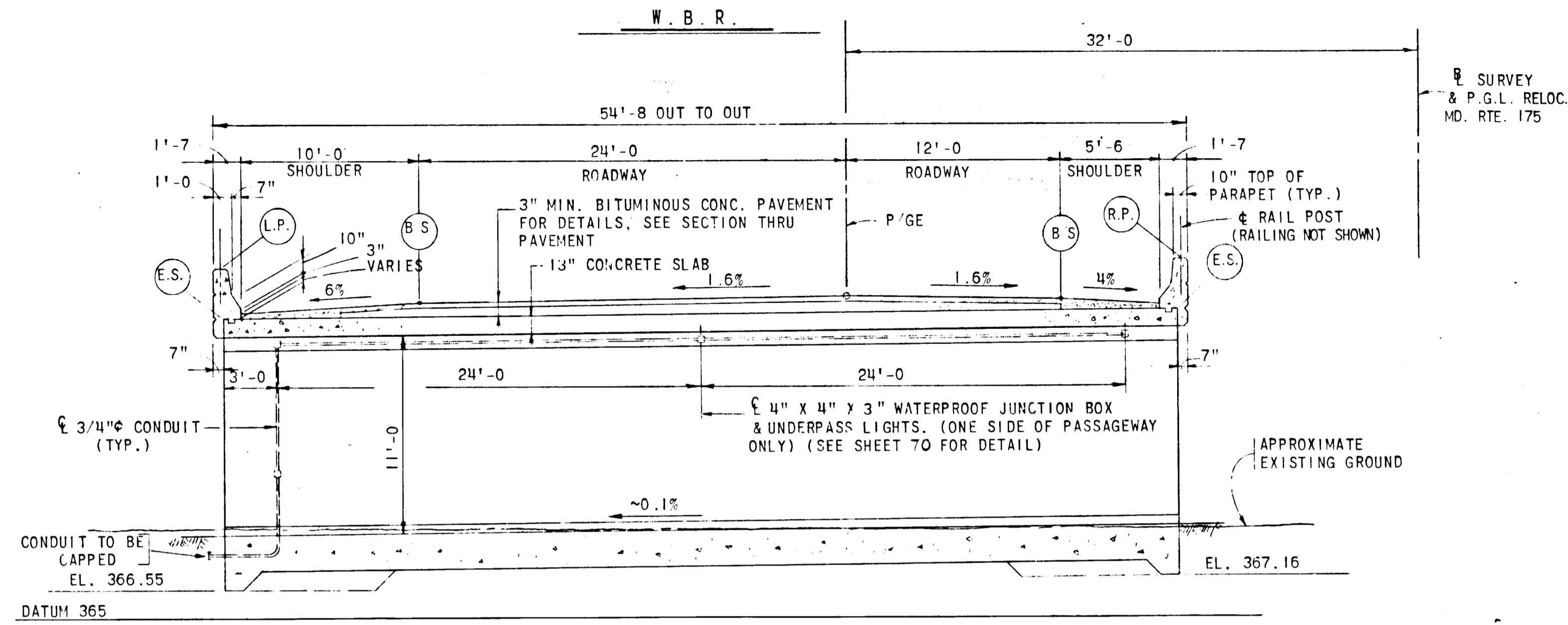
STATE OF MARYLAND
STATE ROADS COMMISSION
 BALTIMORE, MD.
 RELOCATED MD. ROUTE 175 OVERPASS
 PEDESTRIAN PASSAGE
 STA. 1089+
 PLAN AND ELEVATIONS

SCALE AS NOTED DATE APRIL 1972 CONTRACT 10-400-4-778

MADE BY: L.J.W.
 TRACED BY: V.S.K.
 CHECKED BY: L.J.W. & M.J.C.



- NOTES:
- FOR WINGWALL ELEVATION AND OTHER DETAILS, SEE SHEET NO. 70
 - TOP OF SLAB SHALL BE COATED WITH EPOXY COATING SEE SPECIAL PROVISIONS.



GENERAL NOTES

DATUM: ALL ELEVATIONS REFER TO U.S.C. AND G.S. DATUM (MEAN SEA LEVEL OF SAND HOOK).

SPECIFICATIONS: S.R.C. SPECIFICATIONS AND ERRATA TO SPECIFICATIONS DATED MARCH, 1968 AND SPECIAL PROVISIONS FOR MATERIALS AND CONSTRUCTION. A.A.S.H.O. STANDARD SPECIFICATIONS FOR HIGHWAY BRIDGES DATED 1969 FOR DESIGN INCLUDING 1971 INTERIM SPECIFICATIONS. FOR REINFORCED CONCRETE DESIGN $f_c = 1200$ LBS. PER SQ. IN.

ELEVATION	BORING NO. SB-1 PEDESTRIAN UNDERPASS STA. 1013+90-22' LT. FROM SURVEY RELOC. MD. RTE. 175		BORING NO. SB-2 PEDESTRIAN UNDERPASS STA. 1019+20-66' LT. FROM SURVEY RELOC. MD. RTE. 175			
	380					
370	EL. 370	23	1	EL. 370	19	1
		16	2		36	2
360	8.0	16	3	14	3	
		79	4			
350	18.5	102	5	19.5	88	4

WATER ENCOUNTERED @ 7' WATER USED TO ADVANCE THE HOLE
 WATER ENCOUNTERED @ 5' NO WATER USE TO ADVANCE THE HOLE

LOADING: HS 20-44 AND BITUMINOUS CONCRETE PAVEMENT.

CONCRETE: CLASS A-1 CONCRETE SHALL HAVE A MINIMUM COMPRESSIVE STRENGTH OF 3,000 LBS. PER SQ. IN. AT 28 DAYS. SEE SPECIAL PROVISIONS.

CHAMFER: ALL EXPOSED CORNERS OF CONCRETE SHALL BE CHAMFERED 3/4" x 3/4" WITH MILLED CHAMFER STRIPS, EXCEPT WHERE INDICATED BY THE FOLLOWING NOTATION ON THE PLANS "DO NOT CHAMFER".

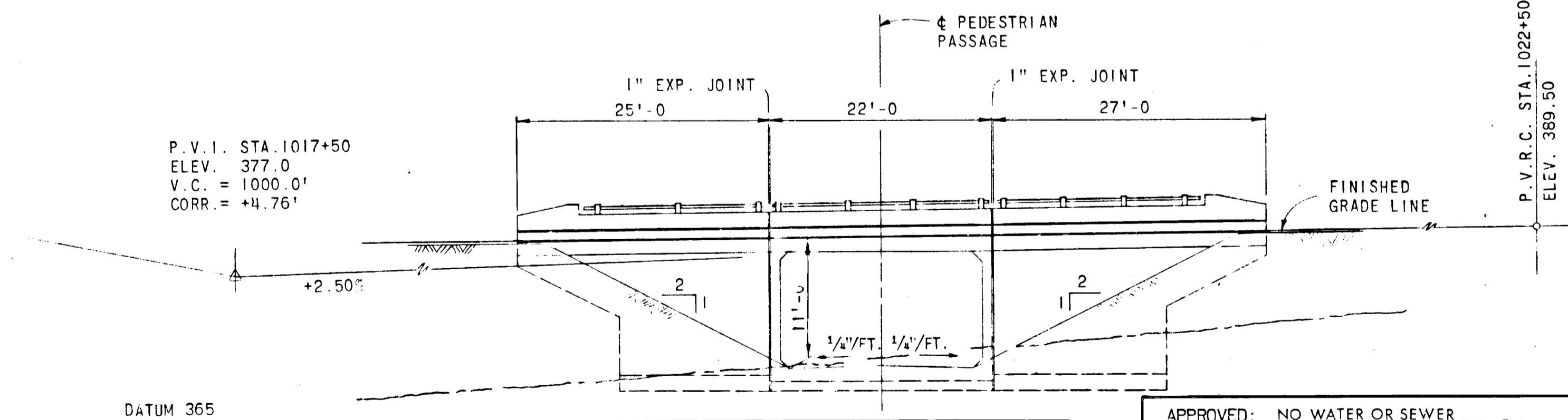
REINFORCING STEEL: REINFORCING STEEL SHALL CONFORM TO A.S.T.M. DESIGNATION A 615 GRADE 60. ALL SPLICES SHALL BE LAPPED A MINIMUM OF 24 BAR DIAMETERS UNLESS OTHERWISE NOTED.

MINIMUM COVER FOR ANY BAR SHALL BE 2" UNLESS OTHERWISE NOTED.

KEYS: ALL KEYS SHALL BE NOMINAL TIMBER SIZE.

EXCAVATION: SEE SPECIAL PROVISIONS.

RAILING: FOR BRIDGE RAILING DET'LS NOT SHOWN, SEE S.R.C. STANDARD DRAWINGS TITLED "STANDARD ONE, AND TWO STANDARD ALUMINUM BRIDGE RAILING" SHEET NO. 1 OF 1; AND "STANDARD ONE AND TWO STRAND GALVANIZED STEEL BRIDGE RAILING" SHEET NO. 1 OF 1. FOR THIS STRUCTURE USE ONE STRAND BRIDGE RAILING.



APPROVED: NO WATER OR SEWER HOWARD COUNTY HEALTH DEPARTMENT
 COUNTY HEALTH OFFICER DATE 2/15/73

APPROVED: HOWARD COUNTY OFFICE OF PLANNING & ZONING
 PLANNING DIRECTOR DATE 3/23/73

APPROVED: FOR PUBLIC WATER, PUBLIC SEWERAGE AND STORM DRAIN SYSTEMS & ROADS HOWARD COUNTY DEPARTMENT OF PUBLIC WORKS
 DIRECTOR DATE 3/23/73
 CHIEF, BUREAU OF HIGHWAYS DATE

LEGEND

DEPTH 12 FEET BELOW SURFACE	30 IN.
BLOWS FT. ON SPOON	140 LBS.
SAMPLE NO.	1.75 IN.
% ROCK CORE RECOVERY	2.5 IN.
SOIL DESCRIPTION	D C - DRIVING CASING

APPROVED
 PLANNING BOARD OF HOWARD COUNTY
 DATE 2/15/73
 Thomas D. Harris

ROADWAY ELEVATION SCHEDULE

LOCATION	NORTH EDGE OF STRUCTURE	CL OF PEDESTRIAN PASSAGE	SOUTH EDGE OF STRUCTURE
L.P.	384.64	384.77	384.90
E.S.	381.88	382.01	382.14
B/S	382.57	382.70	382.83
P/GE	382.96	383.08	383.21
R/S	382.77	382.89	383.02
E.S.	382.49	382.61	382.74
R.P.	385.21	385.33	385.47

LEGEND

L.P. - LEFT TOP OF PARAPET
 E.S. - EDGE OF SLAB
 B/S - BREAK IN SLOPE
 P/GE - PROFILE GRADE ELEVATION
 R.P. - RIGHT TOP OF PARAPET

GREEN ASSOCIATES INC
 CONSULTING ENGINEERS
 BALTIMORE, MARYLAND

STATE OF MARYLAND
 STATE ROADS COMMISSION
 BALTIMORE, MD.
 RELOCATED MD. ROUTE 175 OVERPASS
 PEDESTRIAN PASSAGE
 STA. 1019+
 PLAN AND ELEVATIONS

REVISIONS

SCALE AS NOTED DATE APRIL 1972 CONTRACT HO-400-4-778

MADE BY L.J.W.
 TRACED BY V.S.K.
 CHECKED BY L.J.W. & M.J.S.

SHEET NO. 68 OF

SUPERELEVATED SECTION
S.E. = 0.055 FT./FT.

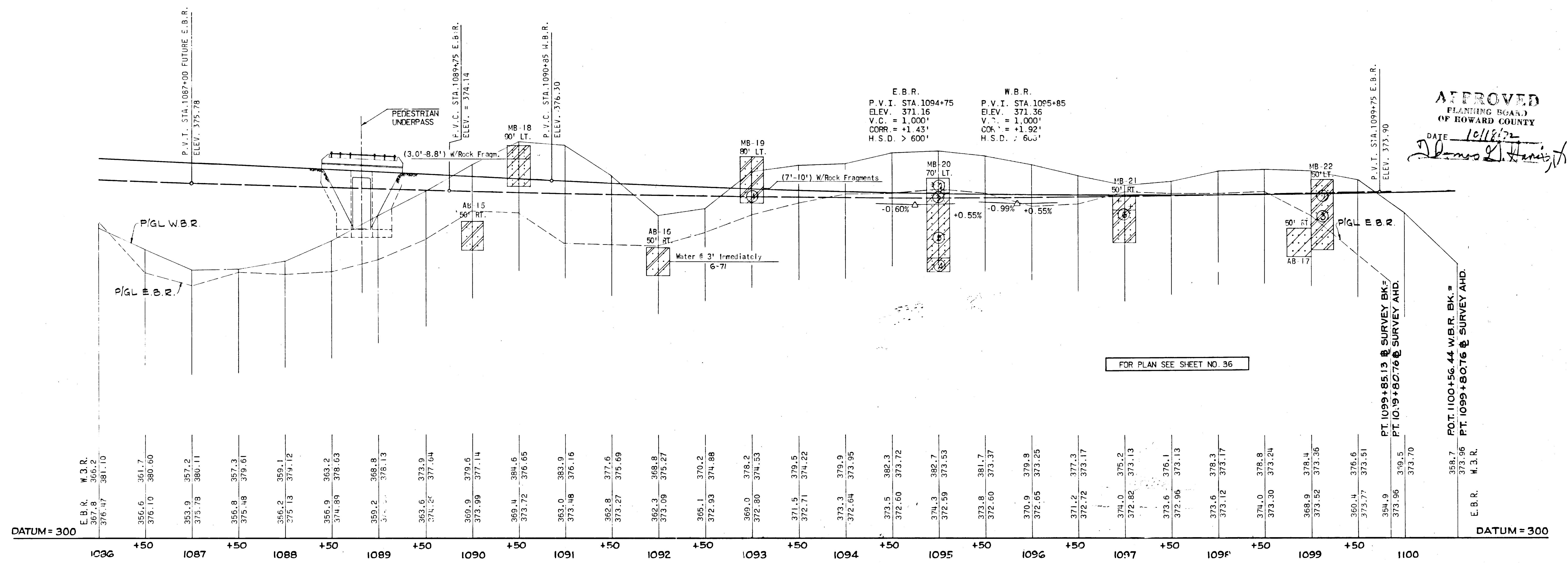
APPROVED: NO WATER OR SEWER
HOWARD COUNTY HEALTH DEPARTMENT
W. D. ... 3/19/73
COUNTY HEALTH OFFICER DATE

APPROVED: HOWARD COUNTY OFFICE OF PLANNING & ZONING
PLANNING DIRECTOR DATE
... 3/23/73
CHIEF, DIVISION OF LAND DEVELOPMENT & TRANSPORTATION PLANNING DATE

APPROVED: FOR PUBLIC WATER, PUBLIC SEWERAGE AND STORM
DRAIN SYSTEMS & ROADS
HOWARD COUNTY DEPARTMENT OF PUBLIC WORKS
William A. Altman 3/21/73
DIRECTOR DATE
D. H. McKeand 3/20/73
CHIEF, BUREAU OF HIGHWAYS DATE

FED. ROAD DIST. NO.	STATE	FED. AID PROJ. NO.	SHEET NO.	TOTAL SHEETS
2	MD.		37	75

SAMPLE NUMBER	LIQUID LIMIT	PLASTICITY INDEX	NATURAL MOISTURE CONTENT	MAX DRY DENSITY OPTIMUM MOISTURE CONTENT
①		N.P.	14.1	
②	34	9	20.4	
③	33	0	17.8	
④		N.P.	22.0	
⑤		N.P.	12.8	122.1 @ 10.3%
⑥			18.8	
⑦			15.1	
⑧		N.P.	15.9	120.5 @ 12.0%



APPROVED
PLANNING BOARD
OF HOWARD COUNTY
DATE 10/18/72
James L. Harris, Jr.

E.B.R. W.B.R.	367.8	366.2	376.47	381.10	356.6	361.7	376.10	380.60	363.9	357.2	375.78	380.11	356.8	357.3	375.48	379.61	356.2	359.1	375.13	379.12	356.9	363.2	374.89	378.03	359.2	368.8	378.13	363.6	373.9	374.26	377.04	369.9	379.6	373.99	377.14	369.4	384.6	373.72	376.65	363.0	383.9	373.48	376.16	362.8	377.6	373.27	375.69	362.3	368.8	373.09	375.27	365.1	370.2	372.93	374.88	369.0	378.2	372.80	374.53	371.5	379.5	372.71	374.22	373.3	379.9	372.64	373.95	373.5	382.3	372.60	373.72	374.3	382.7	372.59	373.53	373.8	381.7	372.60	373.37	370.9	379.9	372.65	373.25	371.2	377.3	372.72	373.17	374.0	375.2	372.82	373.13	373.6	376.1	372.96	373.13	373.6	378.3	373.12	373.17	374.0	378.8	373.30	373.24	368.9	378.4	373.52	373.36	360.4	376.6	375.77	373.51	354.9	373.96	373.59	373.70	358.7	373.96	373.96	W.B.R.
---------------	-------	-------	--------	--------	-------	-------	--------	--------	-------	-------	--------	--------	-------	-------	--------	--------	-------	-------	--------	--------	-------	-------	--------	--------	-------	-------	--------	-------	-------	--------	--------	-------	-------	--------	--------	-------	-------	--------	--------	-------	-------	--------	--------	-------	-------	--------	--------	-------	-------	--------	--------	-------	-------	--------	--------	-------	-------	--------	--------	-------	-------	--------	--------	-------	-------	--------	--------	-------	-------	--------	--------	-------	-------	--------	--------	-------	-------	--------	--------	-------	-------	--------	--------	-------	-------	--------	--------	-------	-------	--------	--------	-------	-------	--------	--------	-------	-------	--------	--------	-------	-------	--------	--------	-------	-------	--------	--------	-------	-------	--------	--------	-------	--------	--------	--------	-------	--------	--------	--------

E.B.R. & W.B.R.

SCALE: PROFILE: HOR. 1 IN. = 50 FT.; VERT. 1 IN. = 10 FT.

GREEN ASSOCIATES, INC.
CONSULTING ENGINEERS
BALTIMORE, MARYLAND

REVISIONS

STATE OF MARYLAND
STATE ROADS COMMISSION
BUREAU OF HIGHWAY DESIGN
RELOCATED MARYLAND ROUTE 175 - U.S. ROUTE 29 TO LARK BROWN ROAD
CONT. NO. 10-400-4-778 F. A. P. NO. SHEET NO. 37 OF 75
PREL. TRAC. BY FINAL TRAC. BY