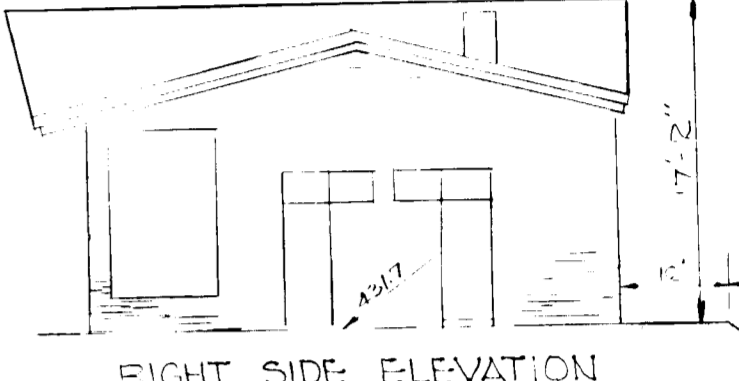


ZONED: E-40

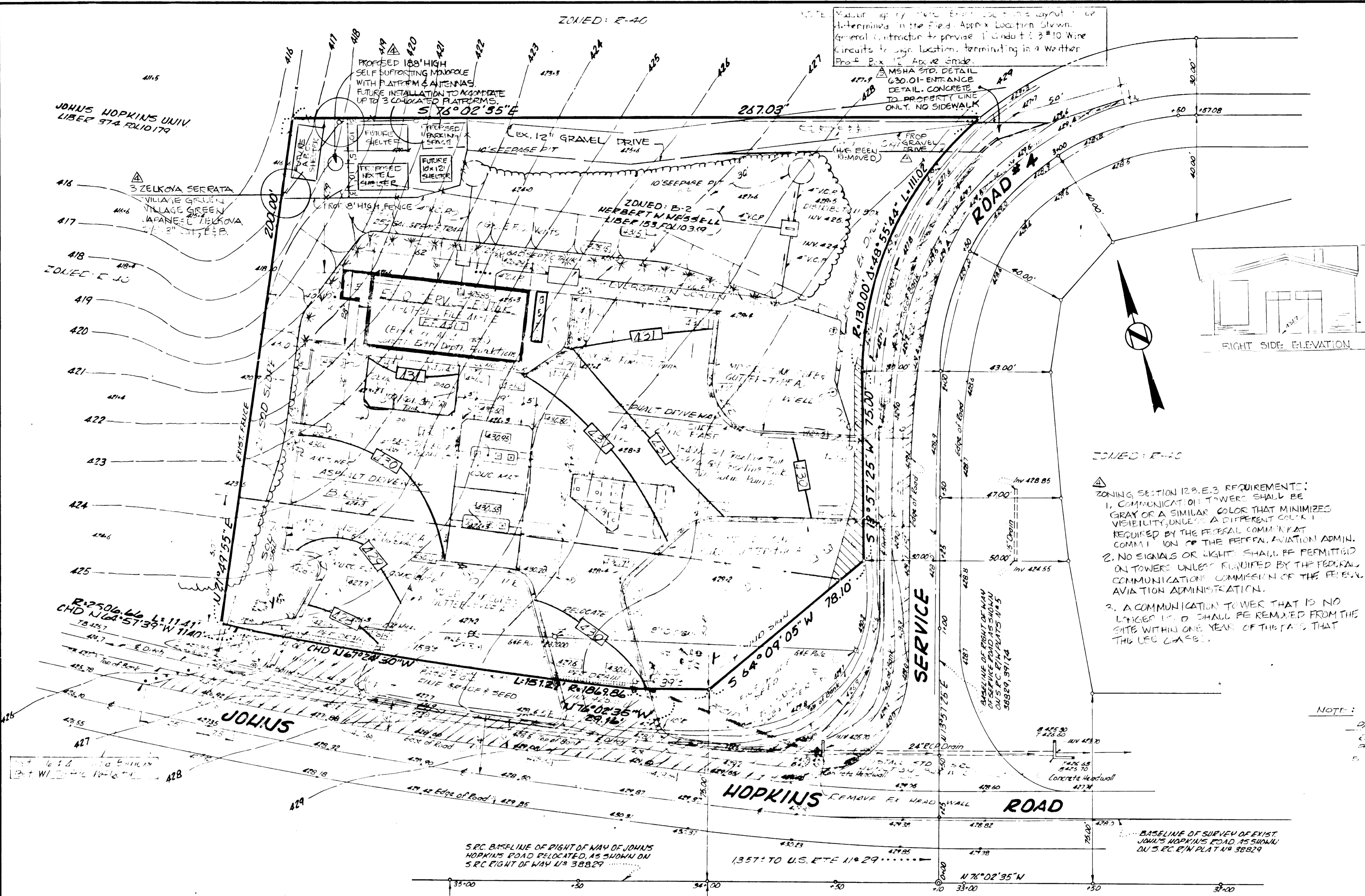
NOTE: Master layout of tower, antenna location & layout determined in the field. Approx. Location Shown. General Contractor to provide 1" Conductors 3 #10 Wire Circuits to site location, terminating in a weather Proof Box 12" Above Grade.
MSHA STD. DETAIL 630.01-ENTRANCE DETAIL. CONCRETE TO PROPERTY LINE ONLY. NO SIDEWALK



ZONED: E-40

- ZONING SECTION 12B.E.3 REQUIREMENTS:
1. COMMUNICATION TOWERS SHALL BE GRAY OR A SIMILAR COLOR THAT MINIMIZES VISIBILITY, UNLESS A DIFFERENT COLOR IS REQUIRED BY THE FEDERAL COMMUNICATION COMMISSION OR THE FEDERAL AVIATION ADMIN.
 2. NO SIGNALS OR LIGHTS SHALL BE PERMITTED ON TOWERS UNLESS PERMITTED BY THE FEDERAL COMMUNICATIONS COMMISSION OF THE FEDERAL AVIATION ADMINISTRATION.
 3. A COMMUNICATION TOWER THAT IS NO LONGER IN USE SHALL BE REMOVED FROM THE SITE WITHIN ONE YEAR OF THE DATE THAT THE USE CHANGES.

NOTE:
DARKNESS
25' MIN 5
7' MIN 15
5' EMPLOYEES



C.D. MEEKINS & ASSOCIATES, INC.
P.O. BOX 2151
ANNAPOLIS, MD. 21404
PHONE: (410) 267-0744

C.D. MEEKINS & ASSOC. INC.
FOR REVISION #4 & #5

5. ADD MSHA STD DETAIL 630.01-ENTRANCE DETAIL 7-30-97

REVISIONS

| | | |
|---|--|---------|
| 1 | ADD MSHA STD DETAIL 630.01-ENTRANCE DETAIL 7-30-97 | 6-17-97 |
| 2 | ADD MSHA STD DETAIL 630.01-ENTRANCE DETAIL 7-30-97 | 6-17-97 |
| 3 | ADD MSHA STD DETAIL 630.01-ENTRANCE DETAIL 7-30-97 | 6-17-97 |
| 4 | ADD MSHA STD DETAIL 630.01-ENTRANCE DETAIL 7-30-97 | 6-17-97 |

CONTOURS

PROPOSED

425

EXISTING

425

HUMBLE OIL & REFINING CO.
7720 YORK ROAD
TOWSON, MARYLAND 21204



J. Robert Russell

THIS BLUEPRINT IS LOANED TO YOU AND MUST BE RETURNED WHEN IT HAS SERVED THE PURPOSE FOR WHICH INTENDED

MARYLAND SURVEYING AND ENGINEERING CO., INC.
SUBSIDIARY OF LYON ASSOCIATES, INC.
6707 WHITE STONE ROAD
BALTIMORE COUNTY, MARYLAND 21207
TELEPHONE 301-944-9291

1805-179

DRAWN BY: JCS/ET/LEUG
CHECKED BY: JCS/ET/LEUG
APPROVED BY: JCS/ET/LEUG
SCALE: 1" = 20'

U.W.C.O.E.
7411 MARYLAND AVE
BALTIMORE, MD 21204