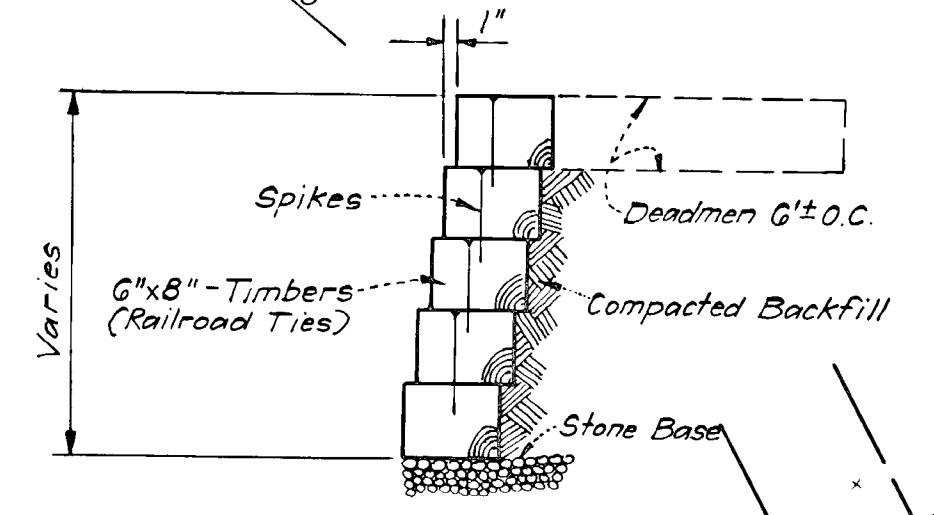
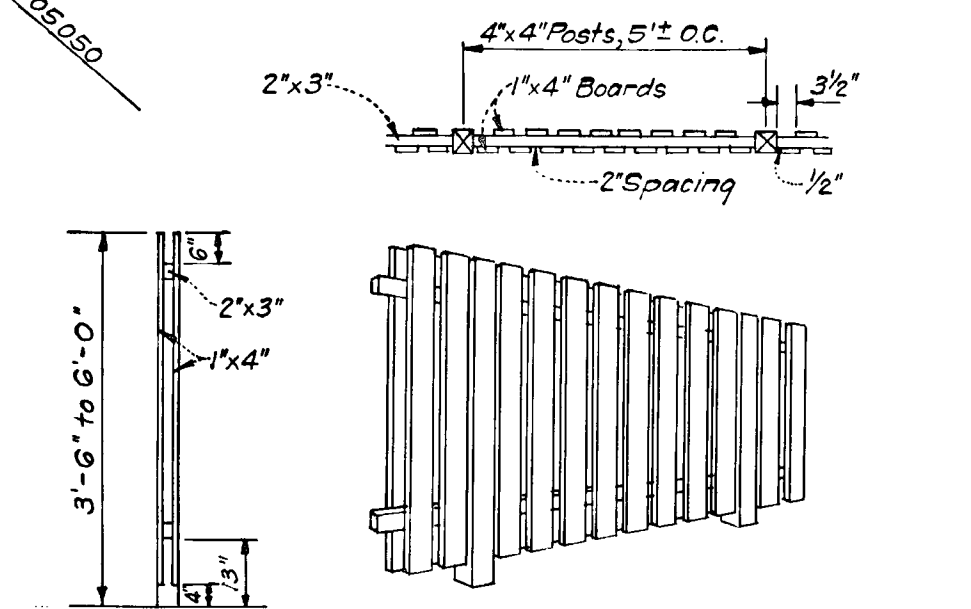


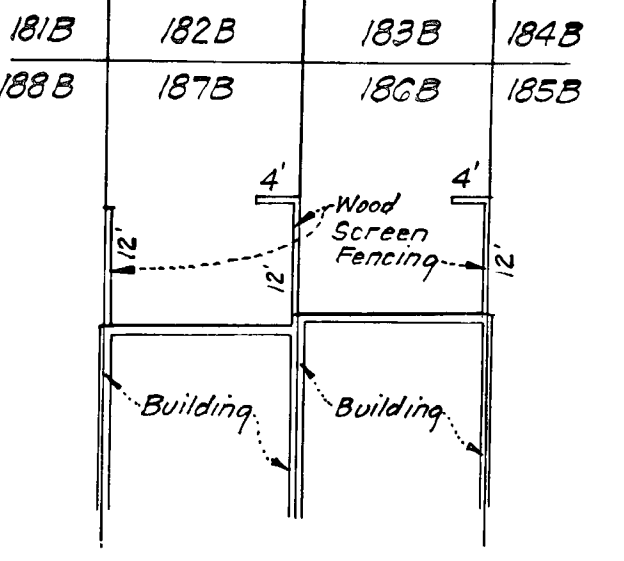
VICINITY MAP  
SCALE: 1"=2500'



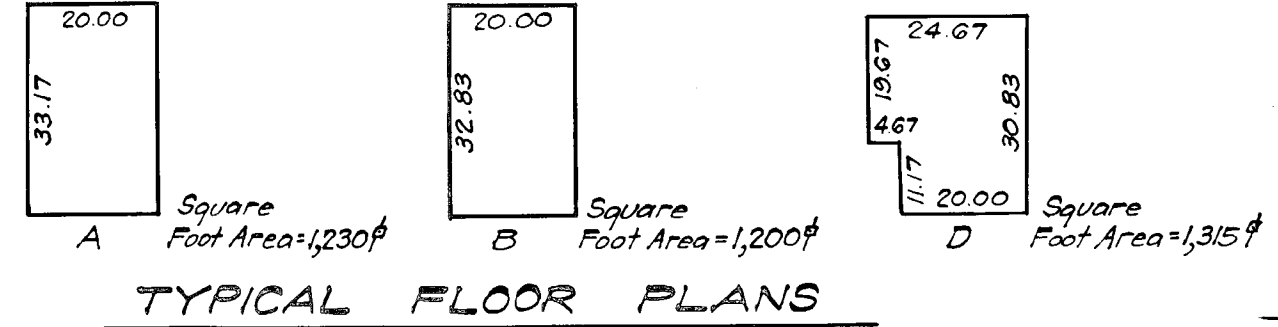
TIMBER RETAINING WALL  
NO SCALE



WOOD 1"x4" SCREEN FENCING DETAILS  
NO SCALE



WOOD SCREEN FENCING TYPICAL  
NO SCALE



TYPICAL FLOOR PLANS

PLAT REFERENCE: PLAT BOOK 15 FOLIO 98

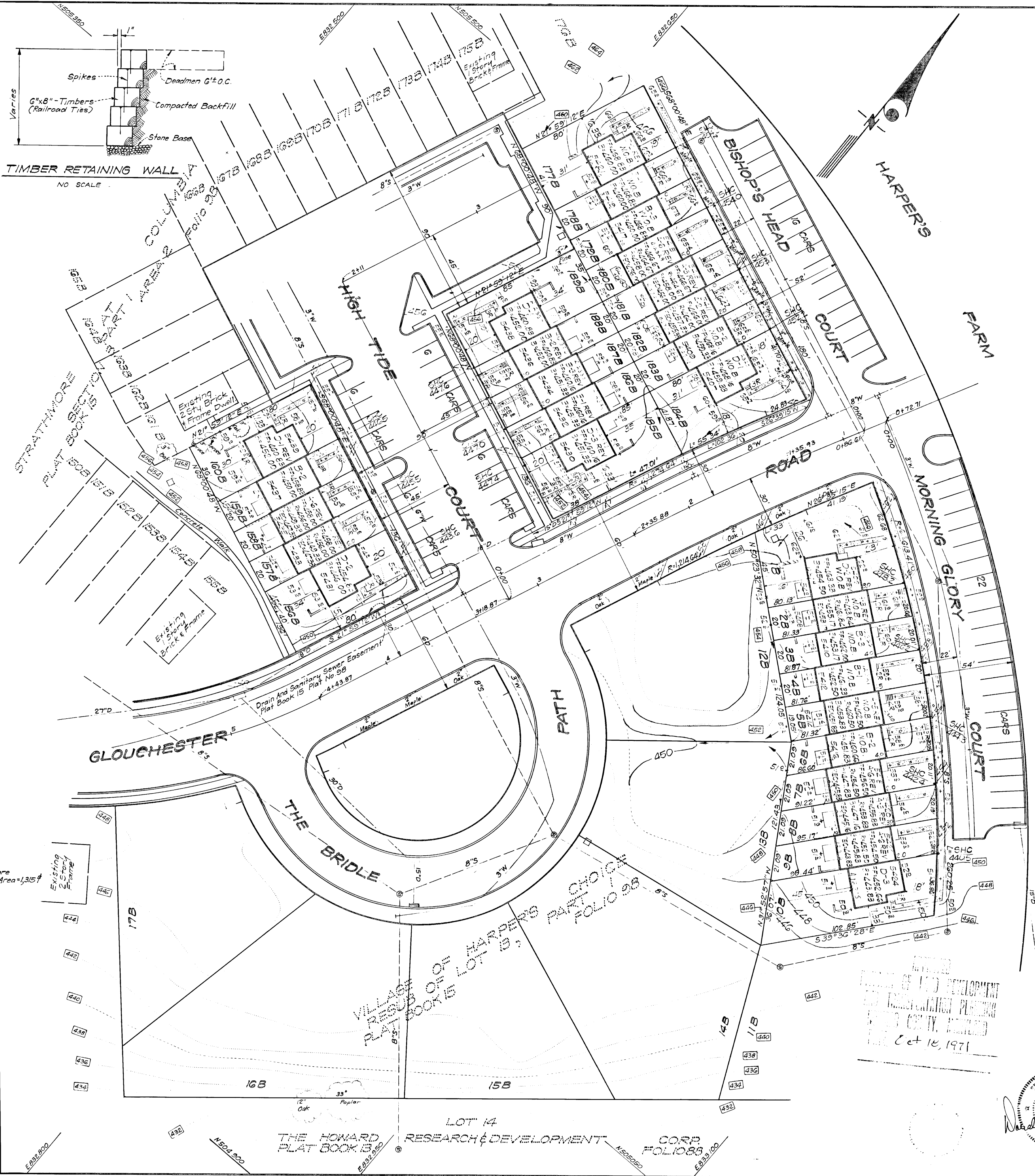
APPROVED FOR PUBLIC WATER AND PUBLIC SEWERAGE SYSTEMS, HOWARD COUNTY HEALTH DEPARTMENT

*Cherlin*  
COUNTY HEALTH OFFICER  
11-15-71  
DATE

APPROVED: HOWARD COUNTY OFFICE OF PLANNING & ZONING  
*James A. Harris*  
PLANNING DIRECTOR  
11-16-71  
DATE

*John Clouse*  
CHIEF ENGINEER, DIVISION OF LAND DEVELOPMENT  
11-15-71  
DATE

APPROVED FOR PUBLIC WATER AND PUBLIC SEWERAGE, STORM DRAINAGE SYSTEMS AND PUBLIC ROADS, HOWARD COUNTY DEPARTMENT OF PUBLIC WORKS  
*William A. Wilson*  
DIRECTOR  
11-17-71  
DATE  
*William A. Wilson*  
CHIEF BUREAU OF HIGHWAYS  
03-20-71  
DATE

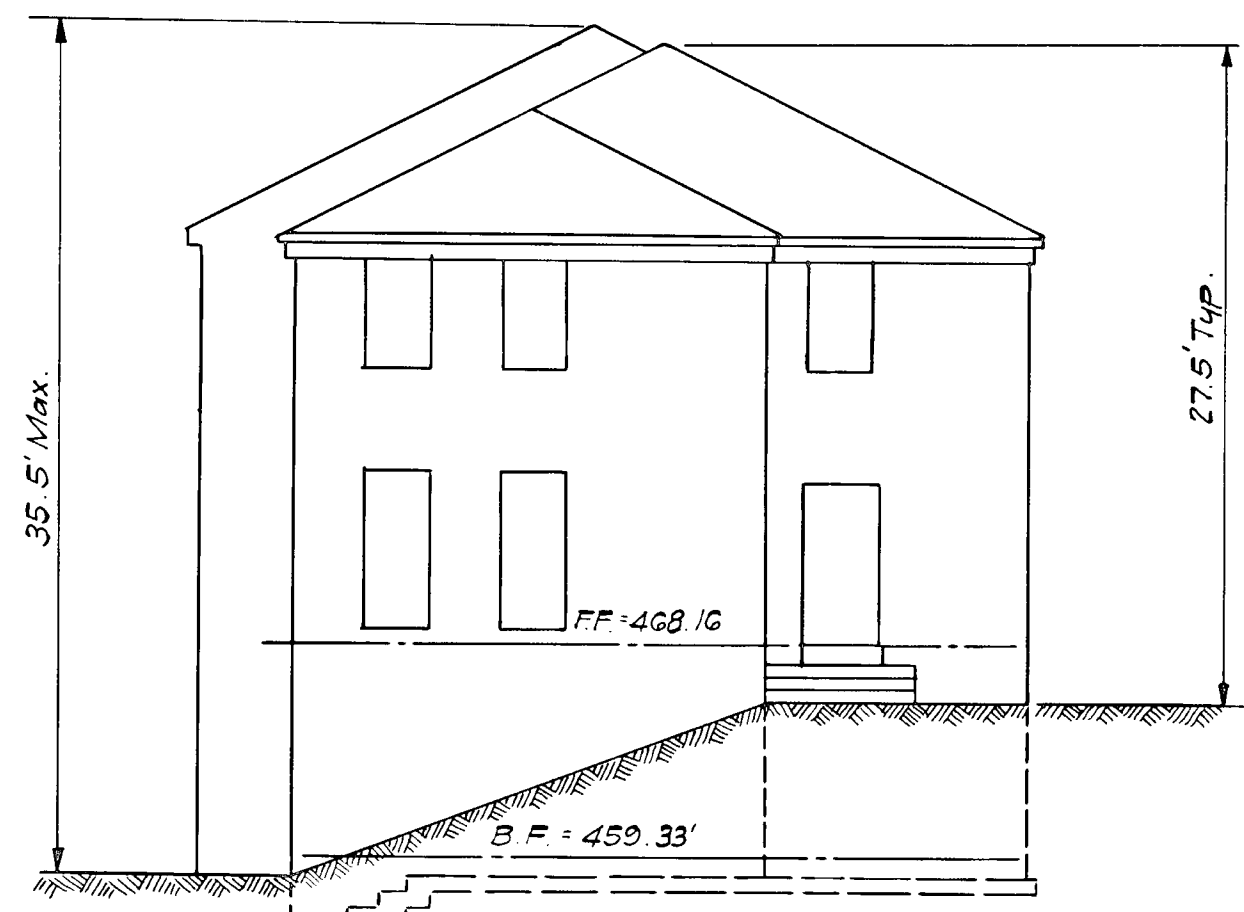


SITE ANALYSIS

1. Zoning = Attached Land Use
2. Area = 1.745 Acres
3. No. Units Shown = 28
4. No. Parking Spaces Required = 56
5. No. Parking Spaces Provided = 62
6. All Street and Parking Area Paving is Existing
7. All Water Mains, Sanitary Sewers And Storm Drains Are Existing.
8. All Lots Shown On This Plan Were Recorded In Plat Book 15, Folio 98.
9. Final Development Plan 30A Second Revision.

LEGEND

1. Contour Interval - 2 ft.
2. Existing Contours
3. Proposed Contours
4. Spot Elevations
5. Direction of Drainage
6. Existing Trees To Be Retained (Trees Disturbed By Construction of New Sidewalk To Be Relocated)
7. Wooden Deck
8. Walk Out Basement
9. Concrete Sidewalk
10. Retaining Wall



TYPICAL BUILDING ELEVATION  
NO SCALE

DEPARTMENT OF LAND DEVELOPMENT  
PLANNING DIVISION  
11-16-71



DEVELOPMENT PLAN  
W.R.M.C. LOTS 12B THRU 10B, 156B THRU 160B & 177B THRU 180B 1"=30'  
**STRATHMORE AT COLUMBIA**  
PART 1  
K.W.C. VILLAGE OF HARPER'S CHOICE SECTION 3 AREA 2 10F1  
D.B.S. 5TH ELECTION DISTRICT HOWARD COUNTY, MARYLAND 71-448C  
OWNER: JEFFERY SNEIDER & CO., INC.  
410 Pine Street  
Vienna, Virginia 22180  
28 Lots Aug., 1971 1033-X