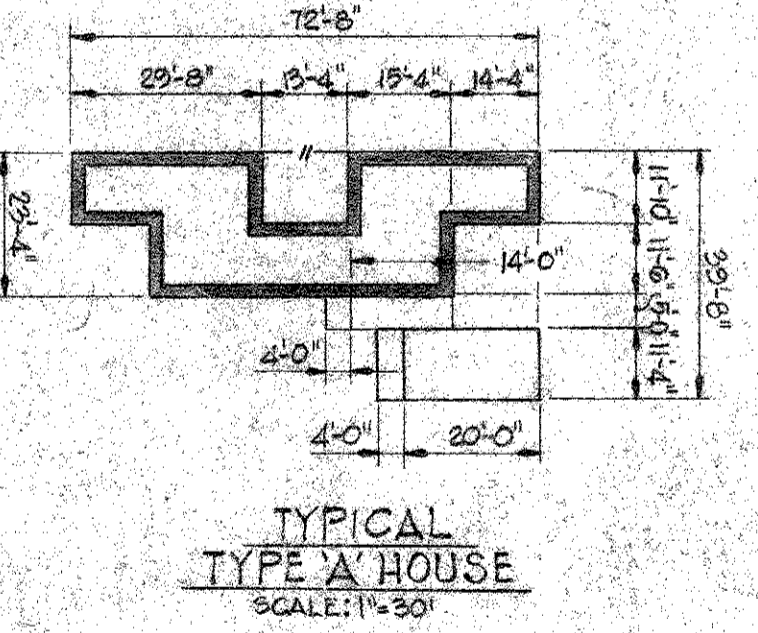
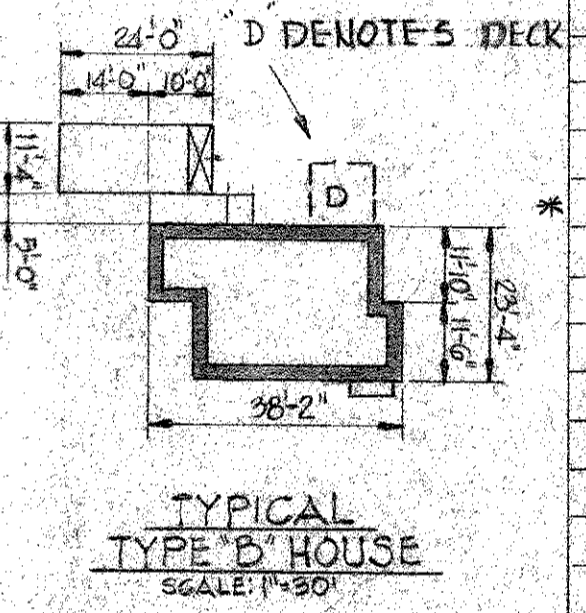


LOT NO.	HOUSE TYPE	ST. NO.
19	"A-R"	G141
20	"A"	G145
21	"A"	G149
22	"A"	G153
23	"B-R"	G163
24	"A"	G167
25	"B-R"	G171
26	"B"	G174
27	"B"	G170
28	"B"	G166
29	"A-R"	G162
30	"A"	G158
31	"B"	G154
32	"A-R"	G150
33	"A-R"	G146
34	"B-R"	G151
35	"A"	G155
36	"A"	G159
37	"B-R"	G163
38	"B-R"	G167
39	"B-R"	G171
40	"B"	G172
41	"A-R"	G168
42	"A-R"	G164
43	"A-R"	G160
44	"B-R"	G156
45	"A-R"	G152
46	"A"	G148
47	"A-R"	G144
48	"A"	G140
49	"A"	G141
50	"B-R"	G145
51	"B-R"	G151
52	"A-R"	G155
53	"A-R"	G159
54	"A-R"	G160
55	"A"	G156
56	"A"	G152
57	"A-R"	G148
58	"A-R"	G144
59	"A-R"	G140
60	"A"	G136

APPROVED  
PLANNING BOARD  
OF HOWARD COUNTY  
DATE 12/29/71  
*Thomas G. Harney*



\* NOTE: TRELLIS WIDTH ONLY 4'  
NOTE: 'D' INDICATES DECK  
NOTE: TOPOGRAPHY VERIFIED APRIL 1971  
*Robert J. Aikens* 4-15-71  
ROBERT J. AIKENS REG. L.S. #9467

APPROVED FOR PUBLIC/PRIVATE WATER AND PUBLIC/PRIVATE SEWERAGE SYSTEMS, HOWARD COUNTY HEALTH DEPARTMENT  
*John H. ...* DATE 1-26-72  
APPROVED HOWARD COUNTY OFFICE OF PLANNING AND ZONING  
*Thomas G. Harney* DATE 1-26-72  
APPROVED FOR PUBLIC WATER, PUBLIC SEWERAGE AND STORM DRAINAGE SYSTEMS AND ROADS  
HOWARD COUNTY DEPARTMENT OF PUBLIC WORKS  
*William A. ...* DATE 1-26-72  
*P. M. ...* DATE 1-26-72

Rev. No.	Rev. Date	Revision Description
1	1-10-72	REVISIONS - SWIFT HOUSES
2	1-10-72	REVISIONS - SWIFT HOUSES

RICHARD P. BROWNE ASSOCIATES  
Columbia, Maryland

ENGINEERS PLANNERS ARCHITECTS  
Wayne, New Jersey

VILLAGE OF OAKLAND MILLS  
STEVEN'S FOREST  
FOR MODEL - PAGE CO.  
SECTION 5 AREA G

Des. By J. S. GARY Scale 1"=30' Dwg No 2 of 2  
Dwn. By J. E. PURDY Date 4-15-71 Proj No 392  
Chk. By Approved W.G. 707B