

SEDIMENT & EROSION CONTROL PLAN

1. ALL EROSION CONTROL MEASURES SHALL BE MAINTAINED THROUGHOUT CONSTRUCTION AND UNTIL THE EROSION CONTROL MEASURES ARE REMOVED.
2. ALL EROSION CONTROL MEASURES SHALL BE MAINTAINED THROUGHOUT CONSTRUCTION AND UNTIL THE EROSION CONTROL MEASURES ARE REMOVED.
3. ALL EROSION CONTROL MEASURES SHALL BE MAINTAINED THROUGHOUT CONSTRUCTION AND UNTIL THE EROSION CONTROL MEASURES ARE REMOVED.
4. ALL EROSION CONTROL MEASURES SHALL BE MAINTAINED THROUGHOUT CONSTRUCTION AND UNTIL THE EROSION CONTROL MEASURES ARE REMOVED.
5. ALL EROSION CONTROL MEASURES SHALL BE MAINTAINED THROUGHOUT CONSTRUCTION AND UNTIL THE EROSION CONTROL MEASURES ARE REMOVED.

NOTES:

1. ALL EROSION CONTROL MEASURES SHALL BE MAINTAINED THROUGHOUT CONSTRUCTION AND UNTIL THE EROSION CONTROL MEASURES ARE REMOVED.
2. ALL EROSION CONTROL MEASURES SHALL BE MAINTAINED THROUGHOUT CONSTRUCTION AND UNTIL THE EROSION CONTROL MEASURES ARE REMOVED.
3. ALL EROSION CONTROL MEASURES SHALL BE MAINTAINED THROUGHOUT CONSTRUCTION AND UNTIL THE EROSION CONTROL MEASURES ARE REMOVED.
4. ALL EROSION CONTROL MEASURES SHALL BE MAINTAINED THROUGHOUT CONSTRUCTION AND UNTIL THE EROSION CONTROL MEASURES ARE REMOVED.
5. ALL EROSION CONTROL MEASURES SHALL BE MAINTAINED THROUGHOUT CONSTRUCTION AND UNTIL THE EROSION CONTROL MEASURES ARE REMOVED.



1. ALL EROSION CONTROL MEASURES SHALL BE MAINTAINED THROUGHOUT CONSTRUCTION AND UNTIL THE EROSION CONTROL MEASURES ARE REMOVED.
 2. ALL EROSION CONTROL MEASURES SHALL BE MAINTAINED THROUGHOUT CONSTRUCTION AND UNTIL THE EROSION CONTROL MEASURES ARE REMOVED.
 3. ALL EROSION CONTROL MEASURES SHALL BE MAINTAINED THROUGHOUT CONSTRUCTION AND UNTIL THE EROSION CONTROL MEASURES ARE REMOVED.
 4. ALL EROSION CONTROL MEASURES SHALL BE MAINTAINED THROUGHOUT CONSTRUCTION AND UNTIL THE EROSION CONTROL MEASURES ARE REMOVED.
 5. ALL EROSION CONTROL MEASURES SHALL BE MAINTAINED THROUGHOUT CONSTRUCTION AND UNTIL THE EROSION CONTROL MEASURES ARE REMOVED.

ROCK COAST ROAD (60' ROW, 36' PAVT.)

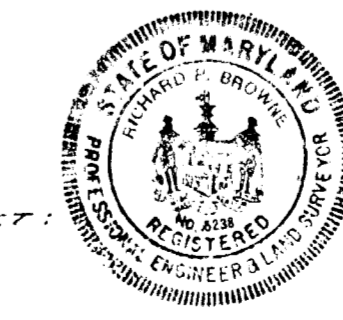
CEDAR LANE (60' ROW, 36' PAVT.)

SEDIMENT AND EROSION CONTROL PLAN

APPROVED: *Patricia A. Ashby* 8/5/71
Richard P. Browne 8-6-71
Robert B. Campbell 8-6-71

CERTIFICATION OF THE PROFESSIONAL ENGINEER
 I certify that the plan of development and the plan for control of soil and erosion meets the requirements, standards and conditions of the Howard Soil Conservation District.
Richard P. Browne
 Richard P. Browne, P. E. & J. S.
 Maryland license No. 5238

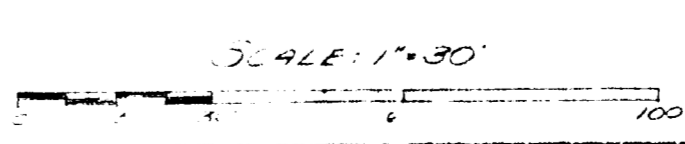
DEVELOPER, & OWNER UNDER CONTRACT:
 CHARLES & PATRICIA ASHBY HW
 322 SPRING VALLEY ROAD
 ELICOTT CITY, MD.

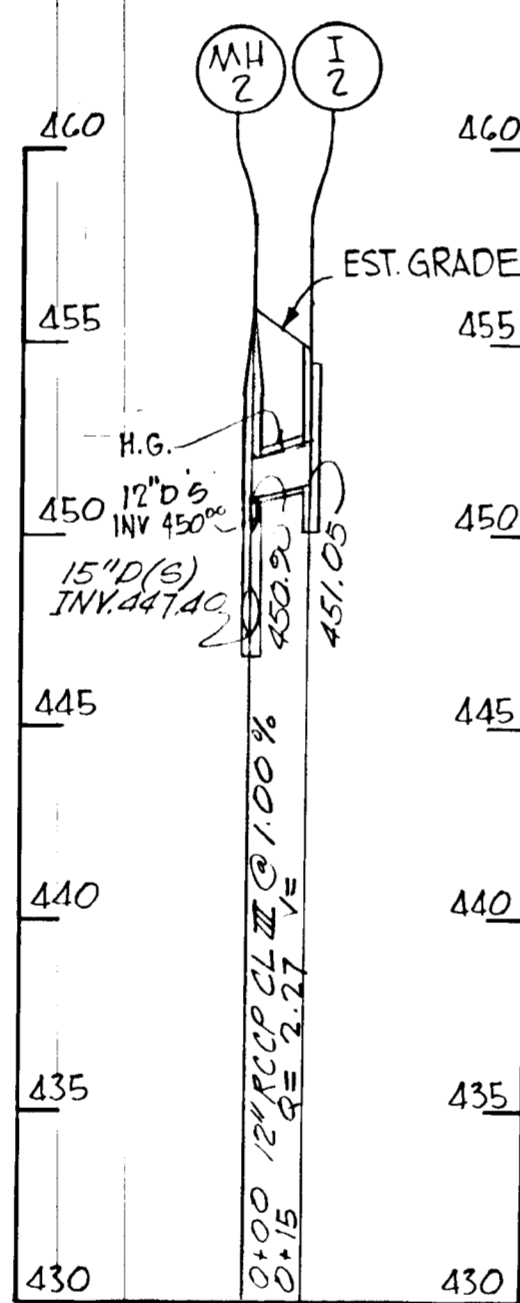


OF CEDAR KNOLLS COLUMBIA

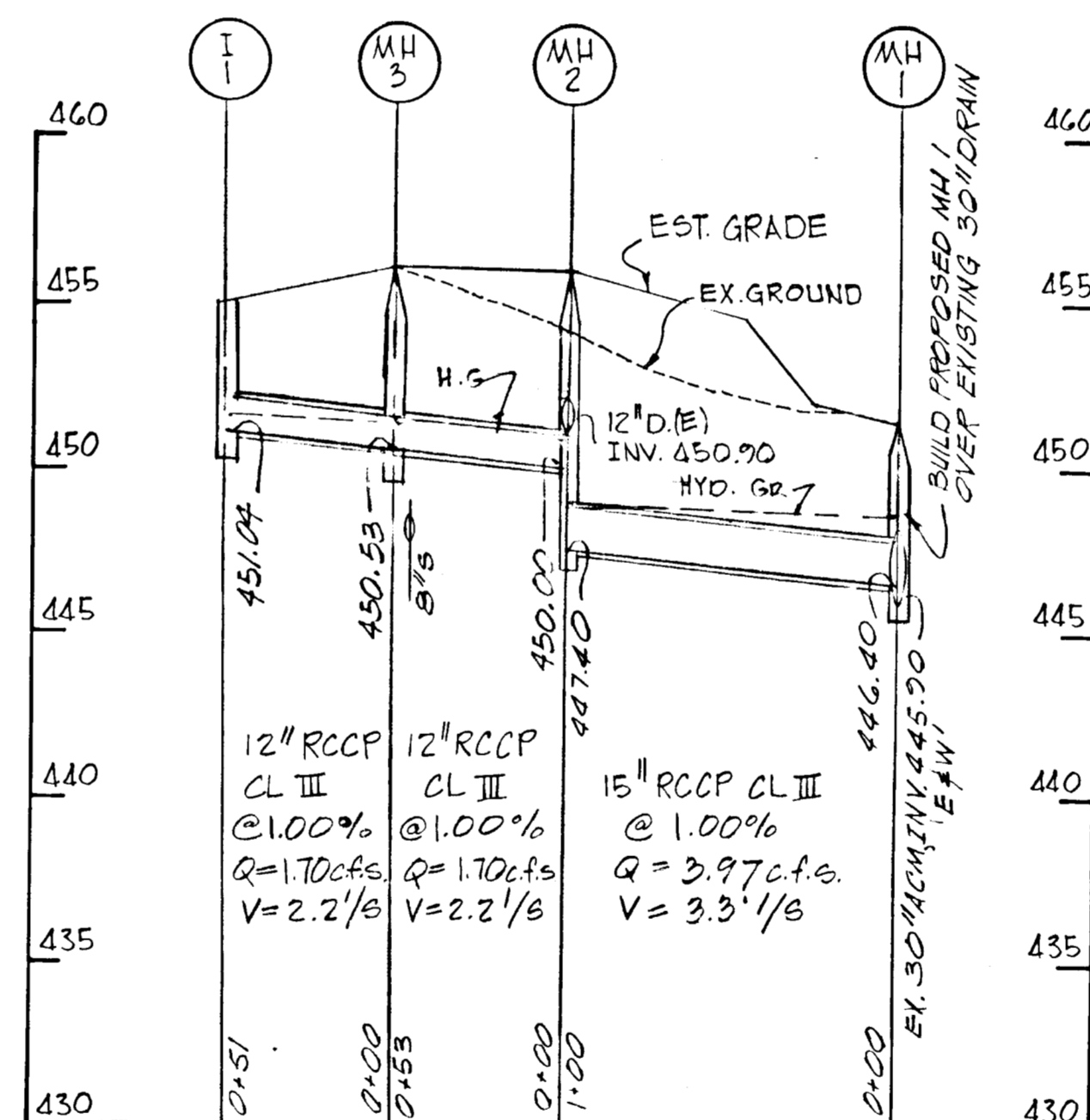
LOCATED IN THE VILLAGE OF HARDER'S CHOICE
 SECTION # 4, AREA # 4 5TH ELECTION DISTRICT
 HOWARD COUNTY, MARYLAND

CHARLES ASHBY N.J. L.S. # 16360
 ELICOTT CITY, MD. MARCH 9, 1971





PROFILES



PROFILES

STORM DRAINAGE		STRUCTURE SCHEDULE				
NO.	TYPE	LOCATION	INV. IN	INV. OUT	TC PELEV	REMARKS
MH1	HO. CO. "DROP" MH"	SEE PLAN	446.40	445.90	N/A	HO. CO. STD. DRWG. D-104 PAGE 159
MH2	HO. CO. "Drop" MH"	SEE PLAN	450.00	447.80	N/A	HO. CO. STD. DRWG. D-104 PAGE 159
MH3	Std. HOWARD CO. MH	SEE PLAN		450.53	N/A	HO. CO. STD. DRWG. D-103 PAGE 158
I-1	Standard 8" COMB.	SEE PLAN	-	451.04	445.50	HO. CO. STD. DRWG. D-101 PAGE 156
I-2	Standard 8" COMB.	SEE PLAN	-	451.05	445.30	HO. CO. STD. DRWG. D-101 PAGE 156



Richard P. Browne
 RICHARD P. BROWNE PE & L.S.
 LIC. NO. 5238 STATE MD.

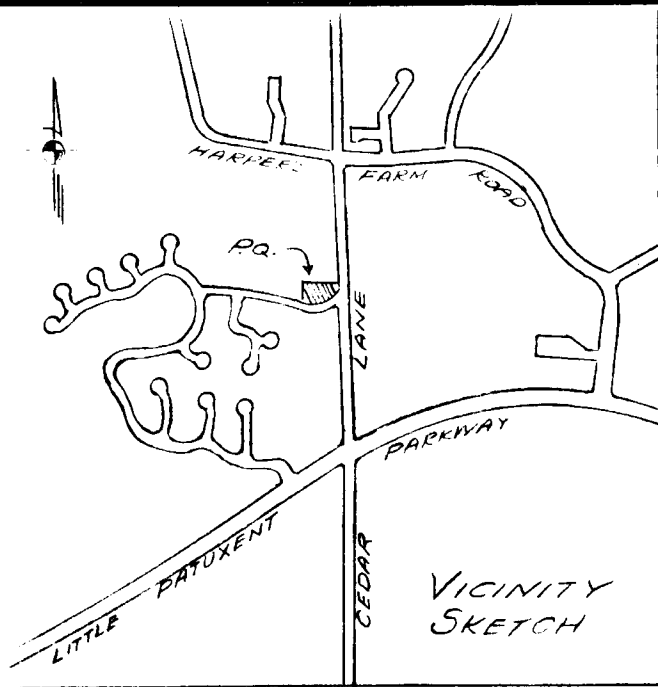
APPROVED FOR PUBLIC WATER AND PUBLIC SEWERAGE SYSTEMS, HOWARD COUNTY HEALTH DEPARTMENT
 COUNTY HEALTH OFFICER _____ DATE _____
 APPROVED HOWARD COUNTY OFFICE OF PLANNING AND ZONING
 PLANNING DIRECTOR _____ DATE _____
 CHIEF ENGINEER, DIVISION OF LAND DEVELOPMENT DATE _____
 APPROVED FOR PUBLIC WATER, PUBLIC SEWERAGE AND STORM DRAINAGE SYSTEMS AND ROADS... HOWARD COUNTY DEPARTMENT OF PUBLIC WORKS
 W. A. Altman 12/20/71
 S. H. Ireland 12/20/71
 CHIEF, BUREAU OF HIGHWAYS DATE

RICHARD P. BROWNE ASSOCIATES ENGINEERS COLUMBIA, MD. JUNE 7, 1971

STORM DRAIN PROFILES

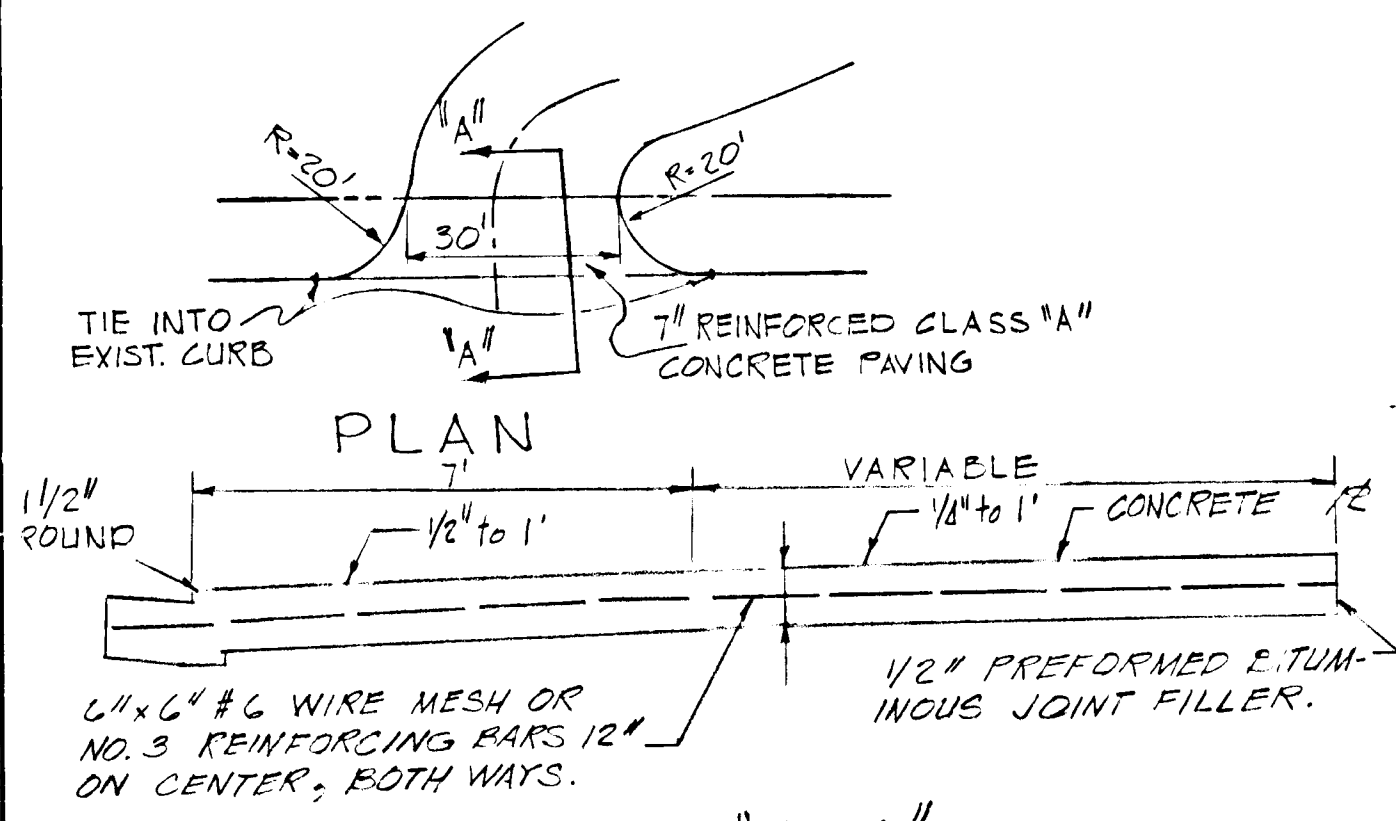
VILLAGE OF HARPERS CHOICE SECTION 4, AREA 4 LOTS A-1 thru A-11 ELECTION DISTRICT NO. 5 HOWARD CO., MD

SCALE HORIZ: 1"=50' VERT: 1"=5'
 SHEET 1 OF 1

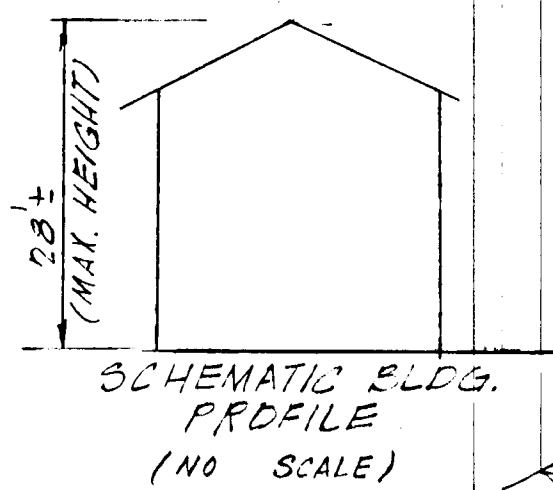


BAND C-2	1" BITUMINOUS CONCRETE SURFACE	1"
1 COURSE BAND C-2 OR G-3	4" BIT. CONCRETE BASE	4"

SURFACE COURSE - C-3
BASE COURSE C-2 OR G-3
TO BE CONSTRUCTED IN ACCORDANCE WITH THE HO. CO. ROAD CONSTRUCTION CODE & SPECIFICATIONS.
PARKING LOT PAVING DETAIL
NO SCALE

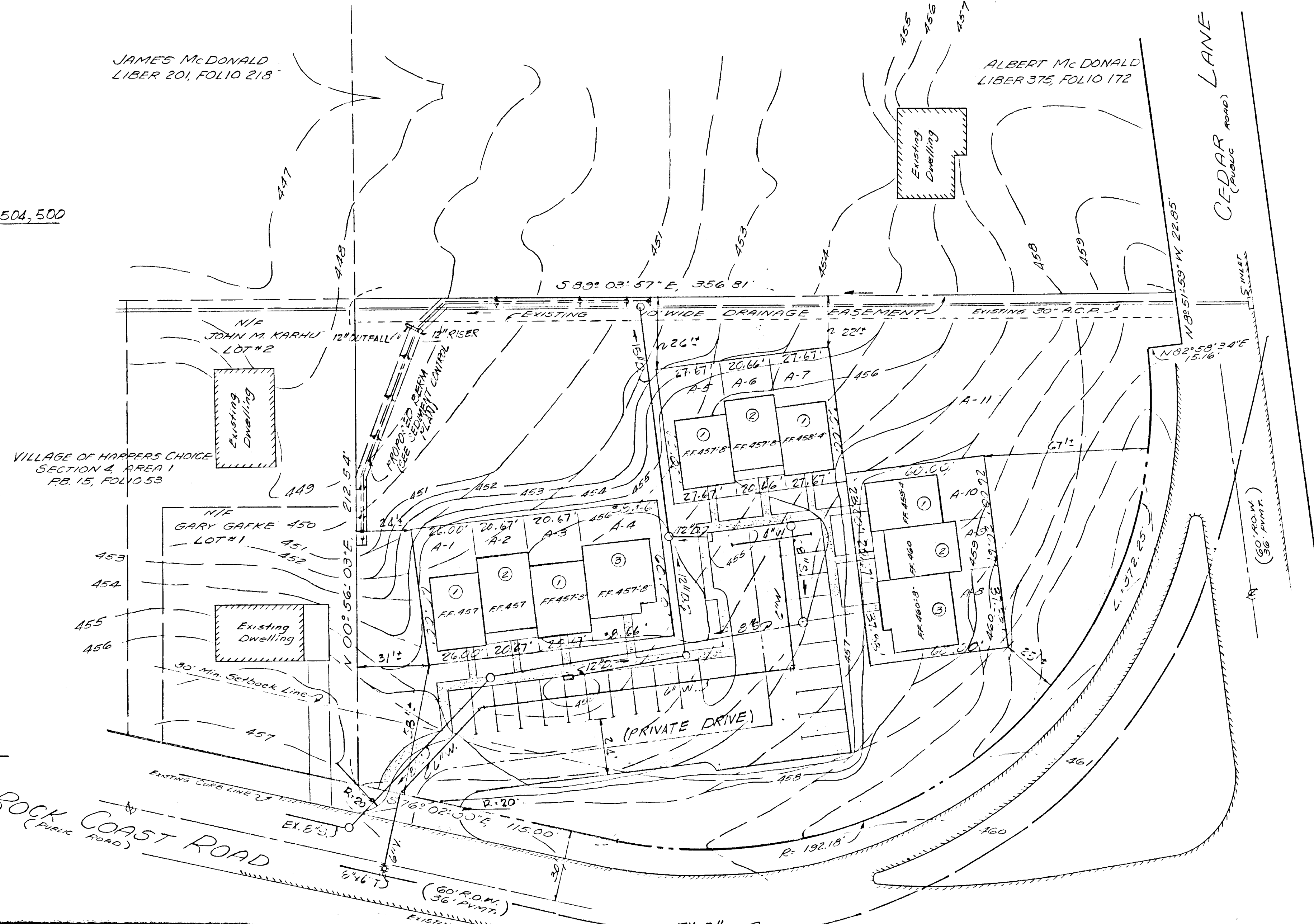


SECTION "A-A" ENTRANCE DETAIL
NO SCALE



JAMES McDONALD
LIBER 201, FOLIO 218

ALBERT McDONALD
LIBER 375, FOLIO 172



VILLAGE OF HARPERS CHOICE
SECTION 4, AREA 1
PB. 15, FOLIO 53

ROCK COAST ROAD
(PUBLIC ROAD)

CEEDAR LANE
(PUBLIC ROAD)

APPROV.
PLANNING BOARD
OF HOWARD COUNTY
DATE 6/30/71
Thomas L. Harris

SITE ANALYSIS

1. AREA OF PARCEL: 1.7 AC.
2. ZONING: ATTACHED LAND USE
3. TOTAL UNITS ALLOWED: 17
4. TOTAL UNITS PROVIDED: 10
5. SQUARE FEET OF FLOOR AREA:
 - A. UNIT TYPE ① 1335 SQ. FT.
 - B. UNIT TYPE ② 1335 SQ. FT.
 - C. UNIT TYPE ③ 1135 SQ. FT.
6. PARKING: REQUIRED: 2 SPACES PER UNIT
NO. OF PARKING SPACES - 20
PARKING SPACE SIZE: 20' x 10'
7. TOPOGRAPHY COMPILED BY ACTUAL FIELD SURVEY.
8. LOT "A-11" COMMON AREA TO BE MAINTAINED BY HOMEOWNERS ASSOCIATION.
9. PUBLIC WATER & SEWER TO BE MADE AVAILABLE.
10. MINIMUM BUILDING SETBACK RESTRICTIONS FROM PROPERTY LINES & THE RIGHT OF WAY OF ANY PUBLIC ROAD TO BE IN ACCORDANCE WITH THE RECORDED FINAL DEVELOPMENT PLAN CRITERIA PHASE 7 & 8.

APPROVED FOR PUBLIC WATER AND PUBLIC SEWERAGE SYSTEMS - HOWARD COUNTY HEALTH DEPARTMENT
DATE 12-23-71

APPROVED HOWARD COUNTY OFFICE OF PLANNING AND ZONING
DATE 12-23-71

APPROVED FOR PUBLIC WATER, PUBLIC SEWERAGE AND STORM DRAINAGE SYSTEMS AND ROADS.
HOWARD COUNTY DEPARTMENT OF PUBLIC WORKS
DATE 12/20/71

NOTE:
NO SIGNS, WALLS, OR FENCES TO BE CONSTRUCTED.

LEGEND

- 453 --- EXISTING CONTOURS
- 453 --- PROPOSED CONTOURS
- --- PROPERTY LINE
- --- BLDG. SETBACK LINE
- --- EXISTING EASEMENT
- --- PROPOSED ERM

SITE PLAN
VILLAGE OF HARPERS CHOICE
SECTION 4, AREA 4, LOTS A-1 THRU A-11
A RESUBDIVISION OF PARCEL "A"
ELECTION DISTRICT #5 HOWARD CO., MD.
SCALE: 1" = 30' JUNE 2, 1971

OWNER:
ASHBY BUILDING CO., INC. 3225 SPRING VALLEY RD.
MAY 23, 1971 ELLICOTT CITY, MD.



Richard P. Browne
RICHARD P. BROWNE, PE & LS.
MARYLAND LICENSE NO. 5738

RICHARD P. BROWNE ASSOCIATES
CONSULTING ENGINEERS - PLANNERS
COLUMBIA, MARYLAND