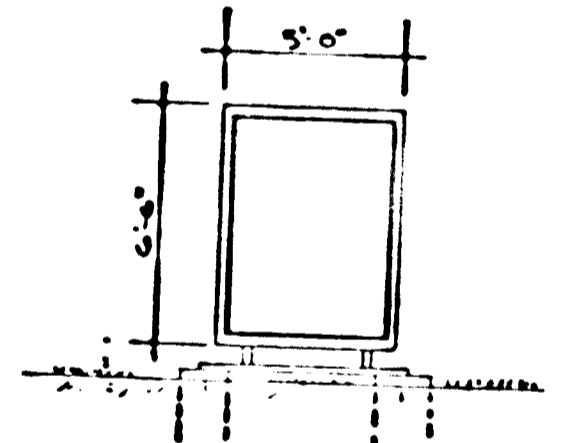
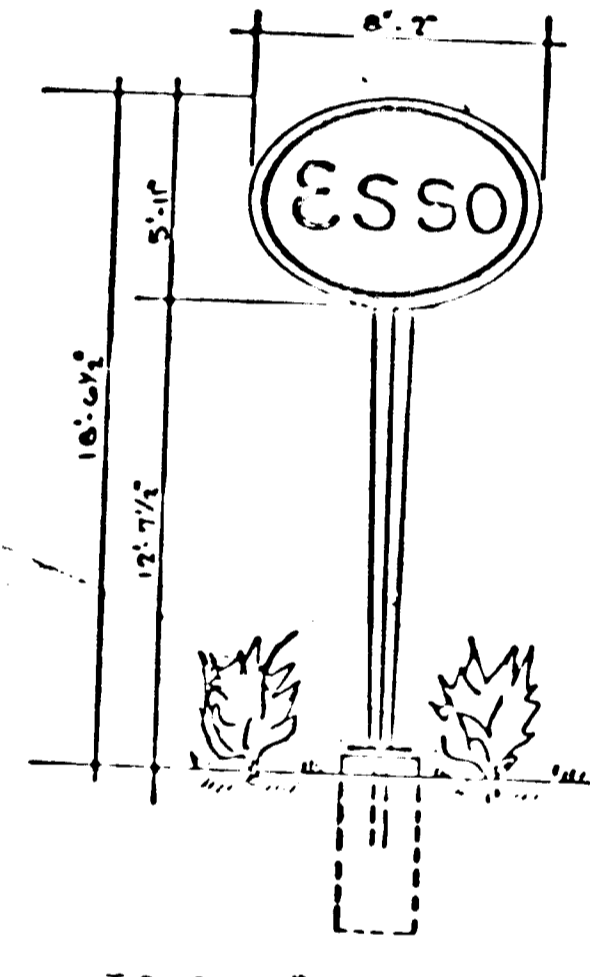


LOCATION MAP
SCALE 1/4 MILE

- GENERAL NOTES
- Total area of site = 1.209 Ac ±
 - Existing zoning = M-1
 - Tax Map No. 47
 - Total number of employees = 8
 - Total sales area used for retail sales of supplies and equipment = 108 S.F.
 - Total parking spaces required at one (1) per two (2) employees and one (1) per hundred square feet of retail sales area = 8
 - Total parking provided at 10 x 20 = 14
 - Used reference: Liber 208 Folio 321
 - Maximum height of any structure 24' I.D. sign



2 DETAIL SIGN #2
SCALE 1/2" = 1'-0"

BALTIMORE WASHINGTON BLVD.

U.S. RTE. #1

NOTE
FUTURE CURB LINE CENTERLINE, GRADES, STORM DRAIN, ETC. ARE BASED ON PLANS FURNISHED FOR HWY CONTR. NO 292-35-771

THIS BLUEPRINT IS LOANED TO YOU AND MUST BE RETURNED WHEN IT HAS SERVED THE PURPOSE FOR WHICH INTENDED

MARYLAND SURVEYING AND ENGINEERING CO., INC.
SUBSIDIARY OF LYON ASSOCIATES, INC.
6707 WHITE STONE ROAD
BALTIMORE COUNTY, MARYLAND 21207
TELEPHONE 301-944-9291

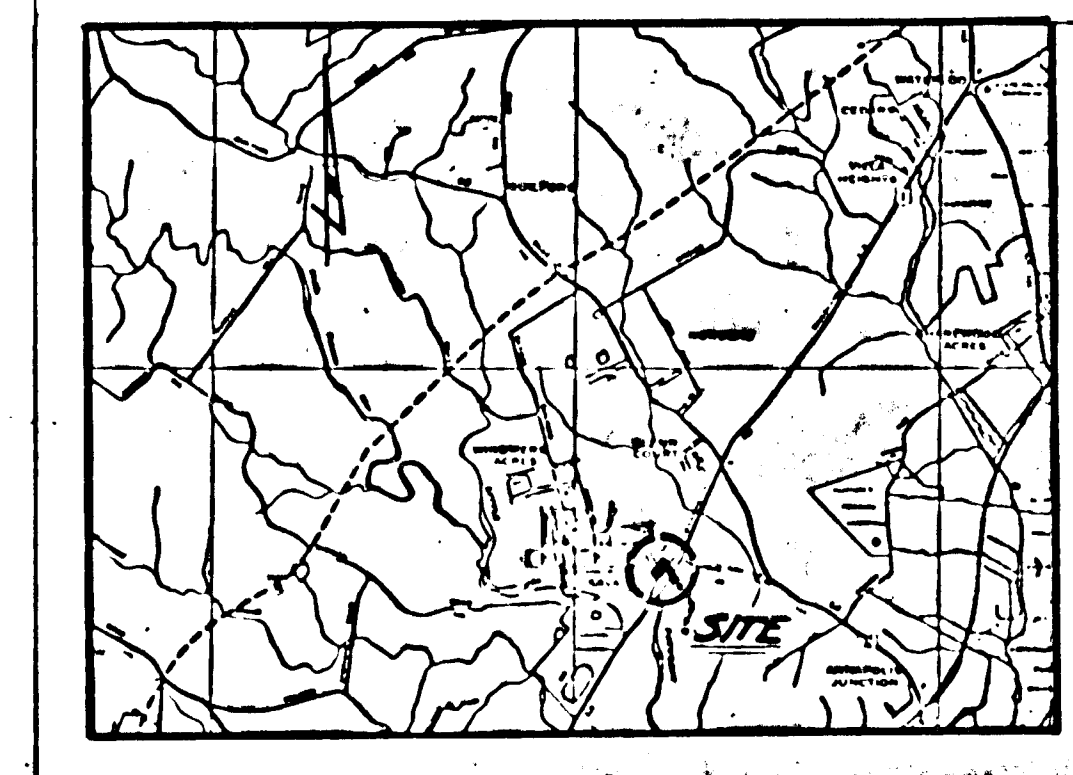
REVISIONS:
REVISED SITE PLAN

HUMBLE OIL & REFINING CO.
TOWSON, MARYLAND 21203

DRAWN BY
CHECKED BY
APPROVED BY
SCALE

DATE: 10-21-77
FILE NO: 6283
SHEET: 1 OF 1
NO: 1-B

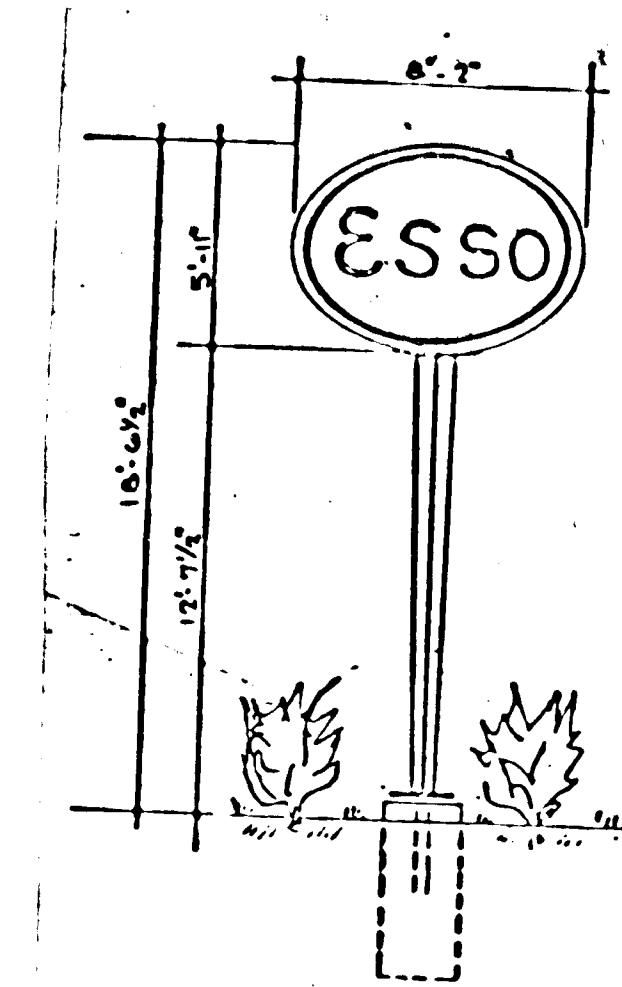
PLAT PLAN
NW CORNER US #1 S HOWARD ST
HOWARD COUNTY, SAVAGE, MARYLAND



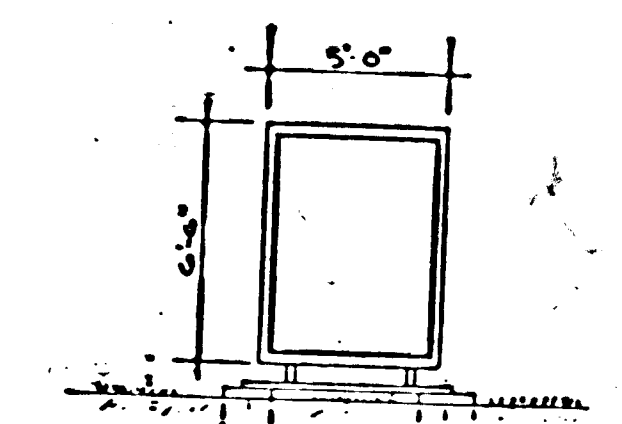
LOCATION MAP
SCALE 1"=1 MILE

GENERAL NOTES

- Total area of site = 1.20 AC.
- Existing Zoning = M-1
- Tax Map No. 47
- Total number of employees 8
- Total sales area used for retail sales of supplies and equipment = 198 S.F.
- Total parking spaces required at one (1) per ten (2) employees and one (1) per hundred square feet of retail sales area = 6
- Total parking provided at 10 x 20 = 14
- Deed reference: Liber 15 Folio 105 & Liber 208 Folio 321
- Maximum height of any structure 24' I.D. Sign



ID SIGN #1
SCALE 3/8"=1'-0"



2-DETAIL SIGN #2
SCALE 3/8"=1'-0"

Certification by the developer:

"I certify that all development and/or construction will be done according to this plan of development and plan of silt and sediment control."

(Signature, Humble Oil & Refin. Co. (Date)

Certification by the Professional Engineer:

"I certify that the plan of development and the plan for control of silt and erosion meets the requirements, standards, and specifications of the Howard Soil Conservation District."

(SEAL) (Signature) (Date)

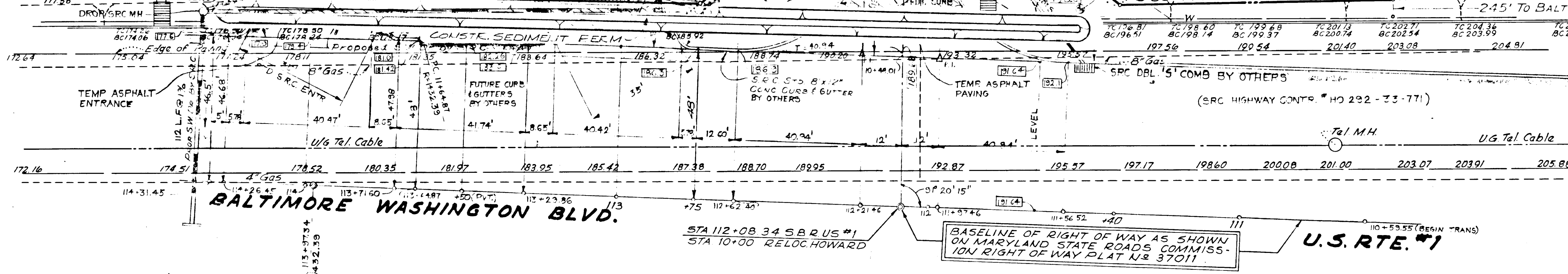
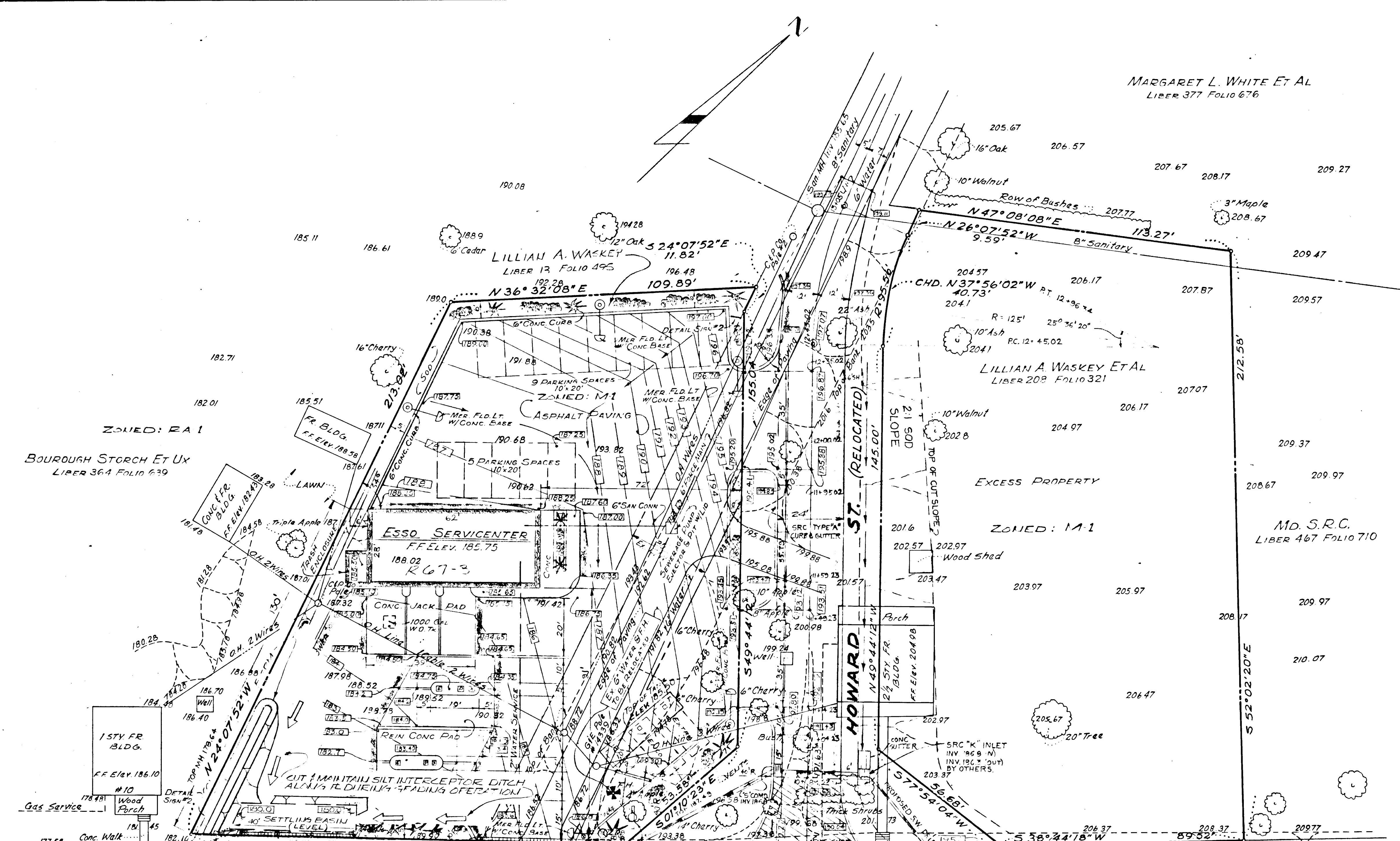
Signature block for approval by the Howard Soil Conservation District:

"This development plan is approved for soil erosion and sediment control by the Howard Soil Conservation District."

Reviewed: *[Signature]* 6-11-71
Dist. Conservationist (Date)

Approved: *[Signature]* 6-11-71
Howard Soil Conservation District (Date)

APPROVED: FOR PUBLIC WATER AND PUBLIC SEWERAGE SYSTEMS, HOWARD COUNTY HEALTH DEPT.	DATE
COUNTY HEALTH OFFICER	
APPROVED: HOWARD COUNTY OFFICE OF PLANNING AND ZONING	DATE
PLANNING DIRECTOR	
CHIEF ENGINEER, DIV. OF LAND DEVELOPMENT	DATE
APPROVED: FOR PUBLIC WATER, PUBLIC SEWERAGE AND STORM DRAINAGE SYSTEMS AND ROADS HOWARD COUNTY DEPT. OF PUBLIC WORKS	DATE
DIRECTOR	
CHIEF, BUREAU OF HIGHWAYS	DATE



SECTION - SETTLING BASIN
10' MIN.

NOTE
GENERAL CONTRACTOR TO NOTIFY HOWARD CO. DISTRICT SOIL CONSERVATION 24 HRS PRIOR TO STARTING ANY WORK

THIS BLUEPRINT IS LOANED TO YOU AND MUST BE RETURNED WHEN IT HAS SERVED THE PURPOSE FOR WHICH INTENDED

MARYLAND SURVEYING AND ENGINEERING CO., INC.
SUBSIDIARY OF LYON ASSOCIATES, INC.
6707 WHITE STONE ROAD
BALTIMORE COUNTY, MARYLAND 21207
TELEPHONE 301-944-9291

1805-167 REVISIONS:

HUMBLE OIL & REFINING CO.
P.O. BOX 1288
TOWSON, MARYLAND 21203

SEDIMENT CONTROL PLAN
N.W. CORNER U.S. #1 & HOWARD ST.
HOWARD COUNTY, SAVAGE, MARYLAND

DRAWN BY: *[Signature]*
CHECKED BY: *[Signature]*
APPROVED BY: *[Signature]*
SCALE: 1"=20'

DATE: 10-20-70
FILE NO.: 6688
SHEET NO.: 1 OF 1
DWC NO.: 1-B