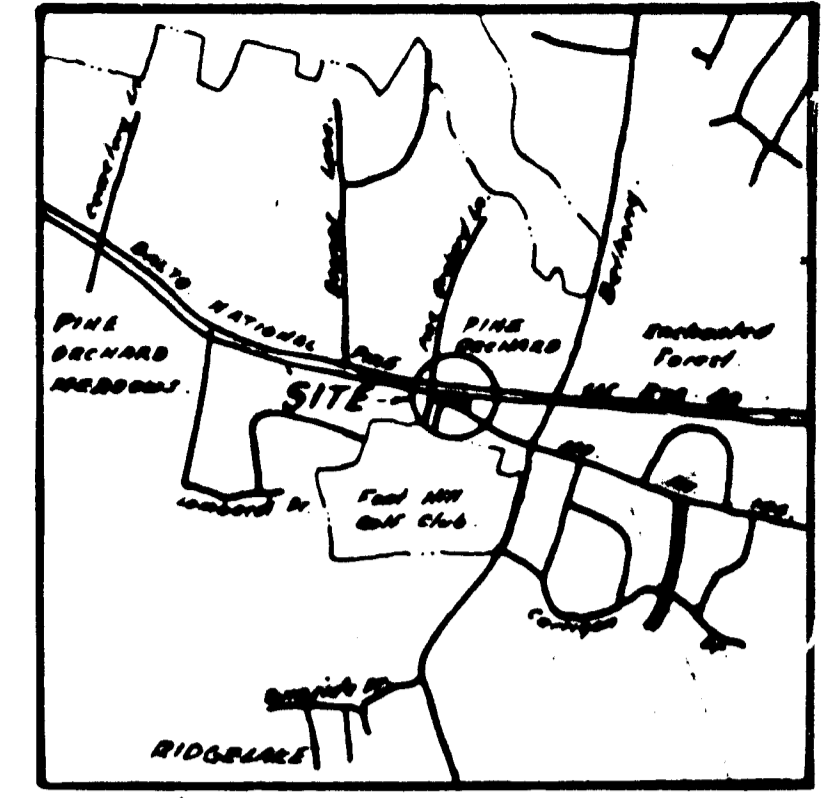
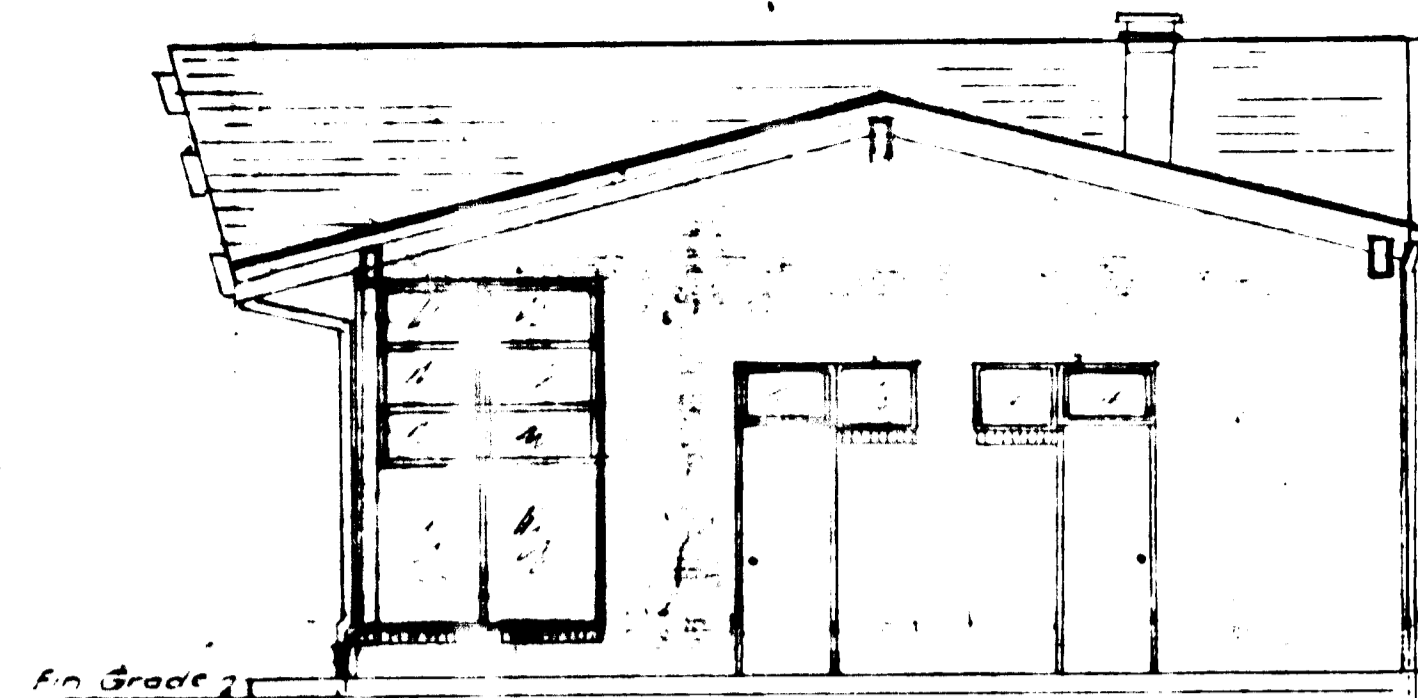


NOTE:
General Contractor to notify Howard County District Soil Conservation 24 hours prior to starting any work.

ESSO



LOCATION MAP
SCALE 1"=200'

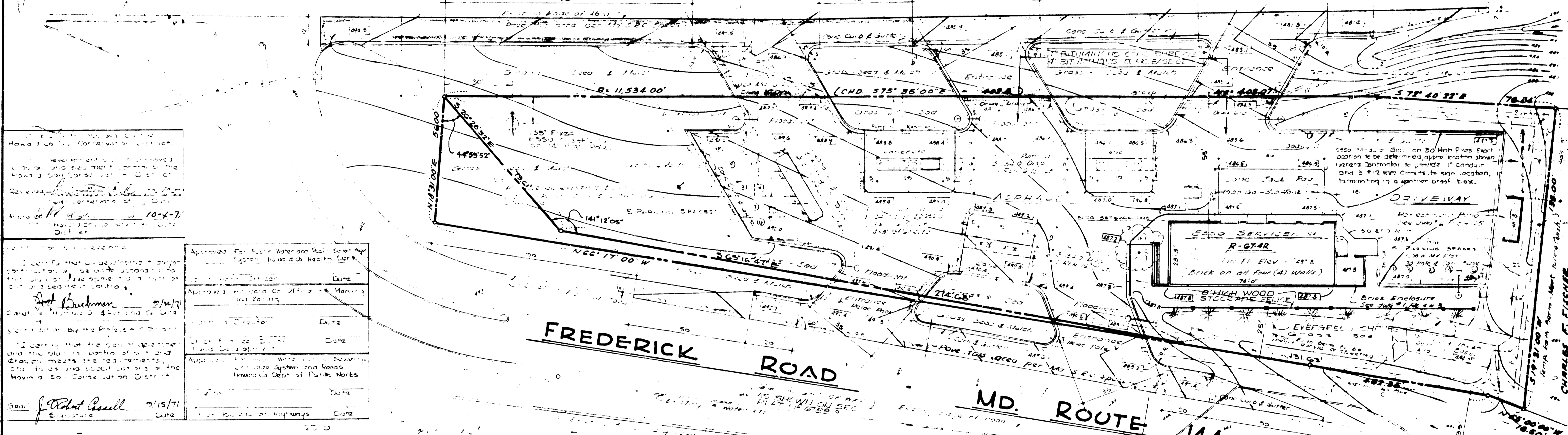


WEST SIDE ELEVATION
SCALE 3/8"=1'-0"

BALTIMORE NATIONAL PIKE - **U.S. ROUTE 40**

(150' RIGHT OF WAY)
Grades as shown

W.D.L.

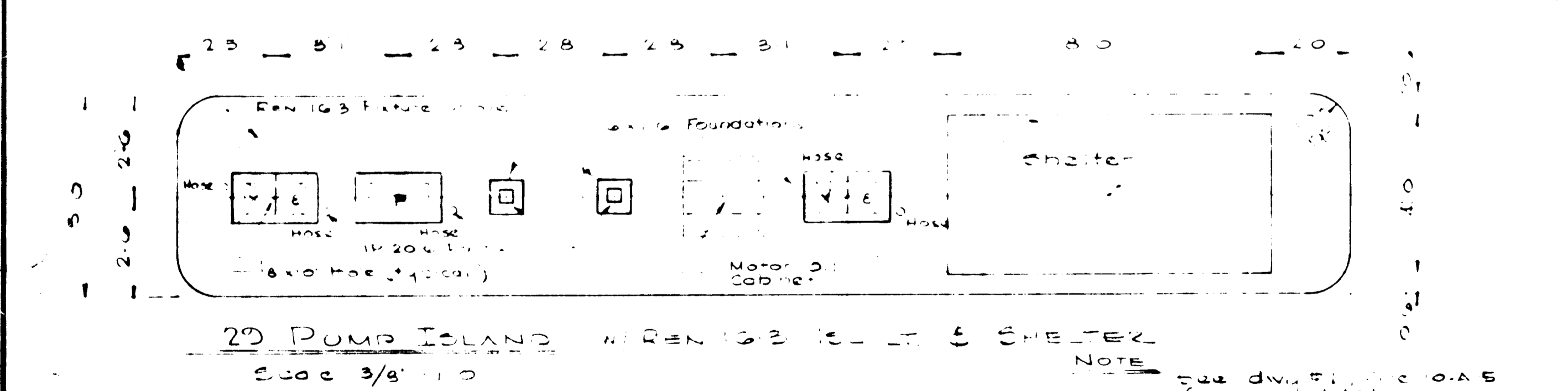


Howard County Soil Conservation District
10-4-71

Approved For Public Water and Public Sewerage System, Howard Co. Health Dept.
Approved Howard Co. Office of Planning and Zoning
9/14/71

Approved For Public Water and Public Sewerage System, Howard Co. Health Dept.
Approved Howard Co. Office of Planning and Zoning
9/15/71

Howard County Soil Conservation District	Date
Howard County Office of Planning and Zoning	Date
Howard County Health Department	Date
Howard County Office of Planning and Zoning	Date
Howard County Health Department	Date
Howard County Office of Planning and Zoning	Date
Howard County Health Department	Date



- NOTES
- Total Land Area = 45,161 sq. ft.
 - Existing Zoning = R-2
 - Total Employment = 19
 - Total Building Area (94,740 sq. ft.) = 212,459 sq. ft.
 - Site Area 44,200 sq. ft. (94,740 sq. ft.) = 210,559 sq. ft.
 - Parking Space provided 120 spaces, 120 ft. x 20 ft. spaces and 11 ft. x 20 ft. spaces.
 - Total parking spaces required 10 - 10' x 20'
 - Total parking spaces provided 10 - 10' x 20'
 - Pavement Specs. 6" Base, 2" Surface
 - Data from Liber 98 Folio 177 & Liber 260 Folio 91
 - Max. height of structure = 22.8' high, 10' sign

2:1 Slope
Ex. Grade

TYPICAL TEMP. SETTLING BASIN & BERM
NOT TO SCALE
(To be maintained during the entire period of construction.)

NOTE: All work shall be in accordance with Maryland S.P.C. Type A.
All Excavation to be done with Minimum 5 P.C. 8" Crushed Run (2.4 Course) to 3 1/2" Max. Size & 5" Brum Conc. 1 1/2" P.C. Base and 1 1/2" P.C. 1.61 Surface.
9" Max. Spacing & Bituminous Concrete (3-3" Courses)

THIS BLUEPRINT IS LOANED TO YOU AND MUST BE RETURNED WHEN IT HAS SERVED THE PURPOSE FOR WHICH INTENDED

REVISIONS:
1. Revised for Std "R" Series Bldg. 5-6-71
2. Revised property lines - BESHQ. 6-30-71
3. Revised for Note of "Kinn" & "Paving Letter" by Howard County Health Dept. 7-28-71 8-4-71

REVISIONS:

HUMBLE OIL & REFINING CO.
7720 YORK ROAD
TOWSON, MARYLAND 21204

Purchase Additional Land
Demolish & Rebuild
Existing Esso Service Center

DRAWN BY: *MLM*
CHECKED BY: *MLM*
APPROVED BY: *MLM*
SCALE: 1"=20'

SITE PLAN
U.S. Route 40 & Md. Rte. 144
Ellicott City, Howard Co., Maryland

DATE: 4-26-71
JOB NO: 2704
SHEET NO: 1 OF 1
SCALE: 1"=20'