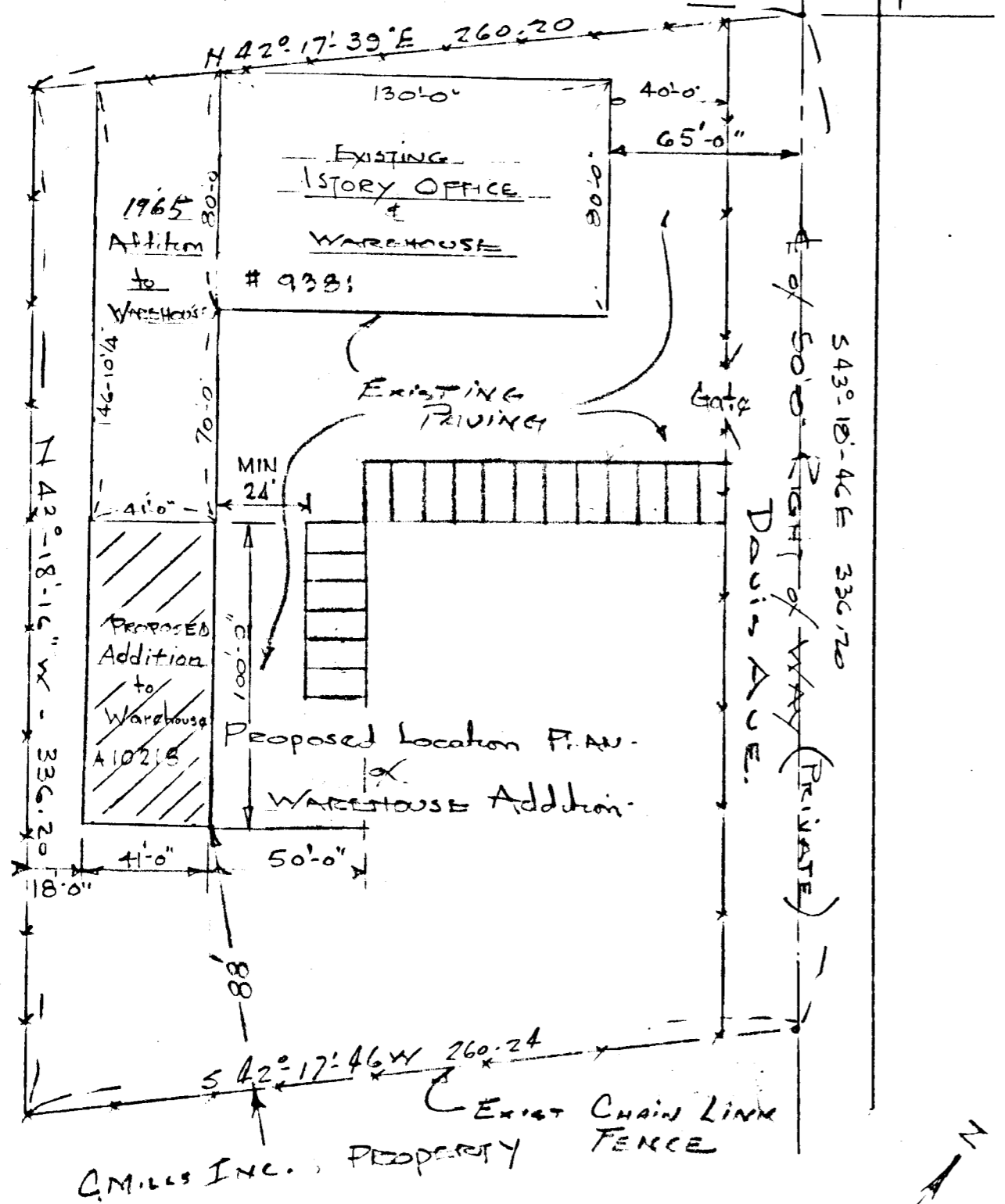


SMITH & DECORSE, INC.

THE DAVIS DISTRIBUTING CO.

Messrs of the Fair Child Bld Level by Pass.

Williams Tavern Park



PLOT PLAN.

BEAVER CREEK CO. LAUREL MD.
SCALE: 1" = 50'-0"
4/13/71

EXCAVATION & GRADING SHALL BE FOR

FOOTINGS ONLY.

TOTAL EMPLOYEES : 18
 TOTAL PARKING REQ'D - @ 1 Space Per 2 Employees
 9 REQ'D.
 TOTAL PARKING PROVIDED - 18 @ 10'x20' SPACES

TAX MAP 50
 PARCEL 422
 EXIST ZONING M-2
 MAX. HEIGHT OF BLDG 21'-0"
 PUBLIC WATER & PUBLIC SEWER
 NO INCREASE IN EMPLOYEES
 TOTAL AREA OF SITE: 2 AC ±
 6TH ELECT. DIST.

OWNER:
 BEAVER CREEK CO.
 LAUREL, MARYLAND.
 ON DAVIS AVE. off N. & S. ROUND
 LONES of R. 1

APPROVED
 DIVISION OF
 LAND DEVELOPMENT
 OFFICE OF
 PLANNING AND ZONING
 OF HOWARD COUNTY
 DATE: MAY 14 1971

S.D.P 71-73