

LOCATION MAP  
Scale: 1" = 2 Miles

NOTES

- COORDINATES AND BEARINGS SHOWN ARE BASED ON Deeds
- ELEVATIONS SHOWN ARE BASED ON *B.M. #68 + Cor. in Curb North Side Wash Blvd in Dorsey Rd.*
- UTILITIES AND OTHER OBSTRUCTIONS AS SHOWN HEREON HAVE BEEN MADE BY ACTUAL FIELD MEASUREMENTS SUPPLEMENTED BY INFORMATION OBTAINED FROM THE VARIOUS AGENCIES INVOLVED. HOWEVER, WE DO NOT GUARANTEE THE ACCURACY OR THE COMPLETENESS OF THE INFORMATION GIVEN. THE CONTRACTOR MUST VERIFY ALL SUCH INFORMATION TO HIS OWN SATISFACTION AND MUST NOTIFY THE UTILITY COMPANIES INVOLVED PRIOR TO COMMENCING WORK.
- THE LINES AND GRADES OF THE PROPOSED ROADS SHOWN HAVE BEEN OBTAINED FROM PLANS OF THE LOCAL HIGHWAY AGENCIES. THEY ARE SUBJECT TO CHANGE UNTIL ACTUAL CONSTRUCTION.
- UTILITY COMPANIES  
CHESAPEAKE & POTOMAC TELEPHONE COMPANY  
320 ST PAUL STREET, BALTIMORE, MD 21202  
BALTIMORE GAS & ELECTRIC COMPANY  
LEXINGTON & LIBERTY STREETS, BALTIMORE, MD 21202

GENERAL NOTES

- Total area of site = 45,390 S.F.
- Existing Zoning = M-1
- Tax Map No. 37
- Total number of employees 8
- Total sales area used for retail sales of supplies and equipment = 198 S.F.
- Total parking spaces required at one (1) per two (2) employees and one (1) per hundred square feet of retail sales area = 6
- Total parking provided at 10 x 20 = 9
- Deed reference: 478/307, 395/630.
- Maximum height of any structure 24' I.D. Sign

Signature block for approval by the Howard Soil Conservation District:

"This development plan is approved for soil erosion and sediment control by the Howard Soil Conservation District."

Reviewed: *[Signature]* 8-30-71  
Dist. Conservationist (Date)

Approved: *[Signature]* 8-27-71  
Howard Soil Conservation District (Date)

Certification by the developer:

"I certify that all development and/or construction will be done according to this plan of development and plan of silt and sediment control."

(Signature, Humble Oil & Refin. Co. (Date)

Certification by the Professional Engineer:

"I certify that the plan of development and the plan for control of silt and erosion meets the requirements, standards, and specifications of the Howard Soil Conservation District."

(SEAL) *[Signature]* Steel  
(Signature) (Date)

APPROVED: FOR PUBLIC WATER AND PUBLIC SEWERAGE SYSTEMS, HOWARD COUNTY HEALTH DEPT.

COUNTY HEALTH OFFICER DATE

APPROVED: HOWARD COUNTY OFFICE OF PLANNING AND ZONING

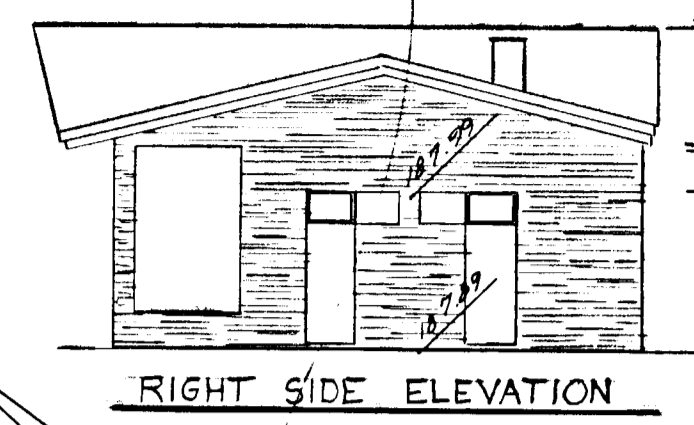
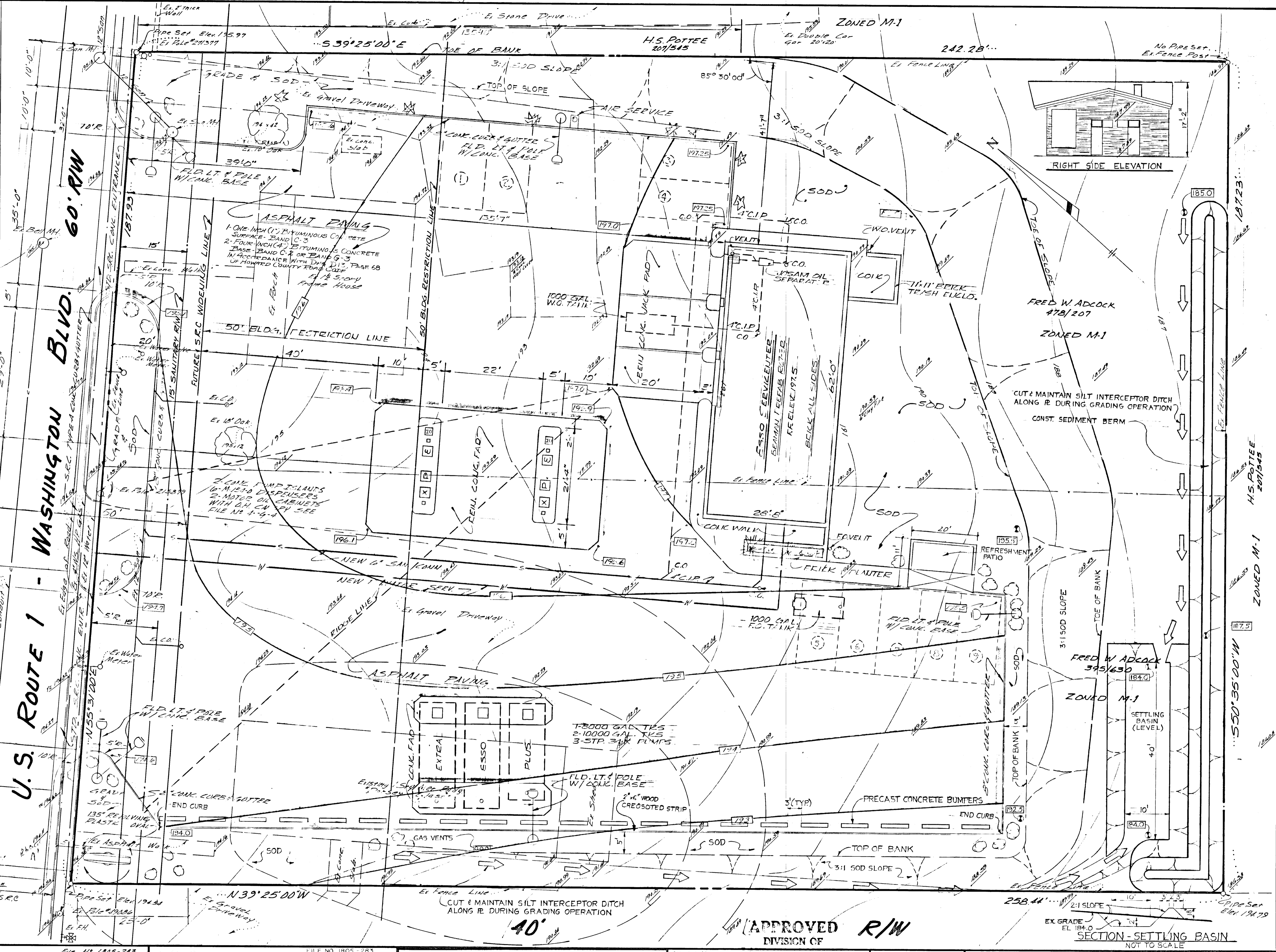
PLANNING DIRECTOR DATE

CHIEF ENGINEER, DIV. OF LAND DEVELOPMENT DATE 6-24-71

APPROVED: FOR PUBLIC WATER, PUBLIC SEWERAGE AND STORM DRAINAGE SYSTEMS AND ROADS HOWARD COUNTY DEPT. OF PUBLIC WORKS

DIRECTOR DATE 6/14/71

CHIEF, BUREAU OF HIGHWAYS DATE



RIGHT SIDE ELEVATION

REVISED: TO CONFORM TO 50' SETBACK 5-20-71 FROM FUTURE WIDENING LINE PER HOWARD CO. COMMENTS

MARYLAND SURVEYING AND ENGINEERING CO., INC.  
SUBSIDIARY OF LYON ASSOCIATES, INC.  
1742 WHITE ST. ROAD  
BALTIMORE COUNTY, MARYLAND 21207  
TELEPHONE 321 844 0700

HUMBLE OIL & REFINING CO.  
TOWSON, MARYLAND 21203

OFFICE OF PLANNING AND ZONING OF HOWARD COUNTY  
DATE: MAY 13 1971

SCALE: 1" = 10'-0"

**SITE PLAN**  
S. SIDE OF WASH. BLVD. 100'S SOUTH OF DORSEY RD. MD. RT. 176  
HOWARD CO. 1ST ELECTION DIST. MD.

DATE: 2-4-71  
FILE NO: SDP 7156

APPROVED DIVISION OF R/W

SECTION - SETTLING BASIN  
NOT TO SCALE