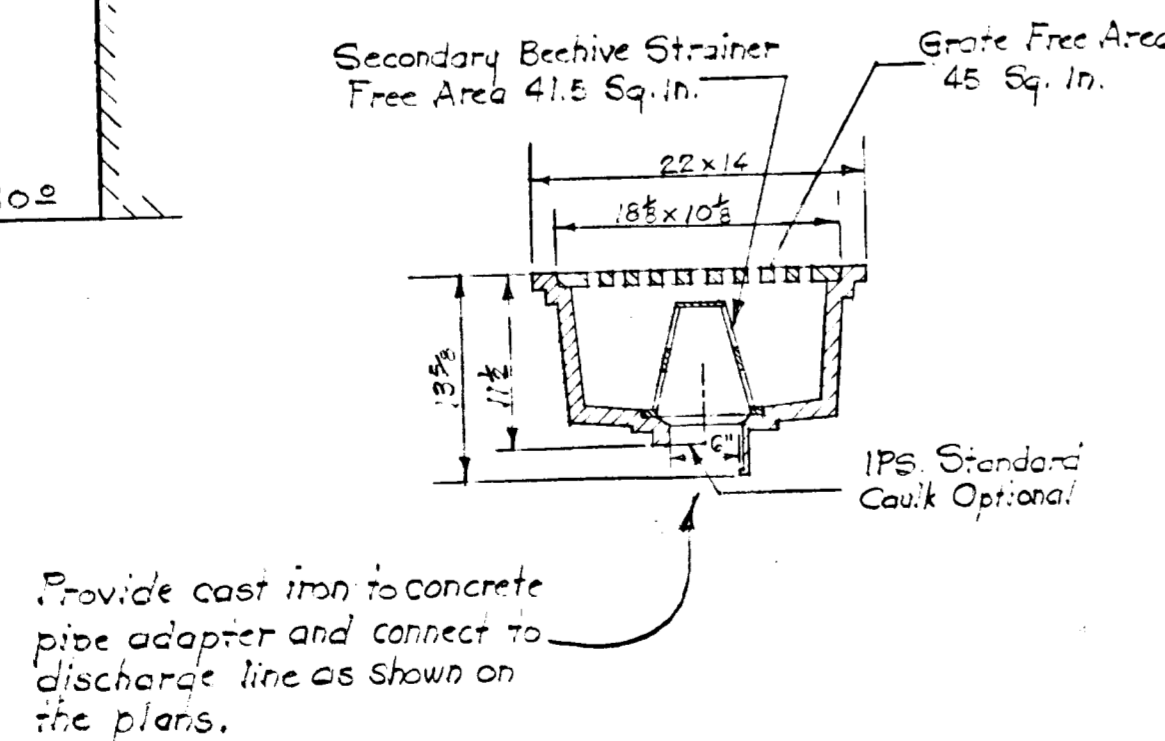
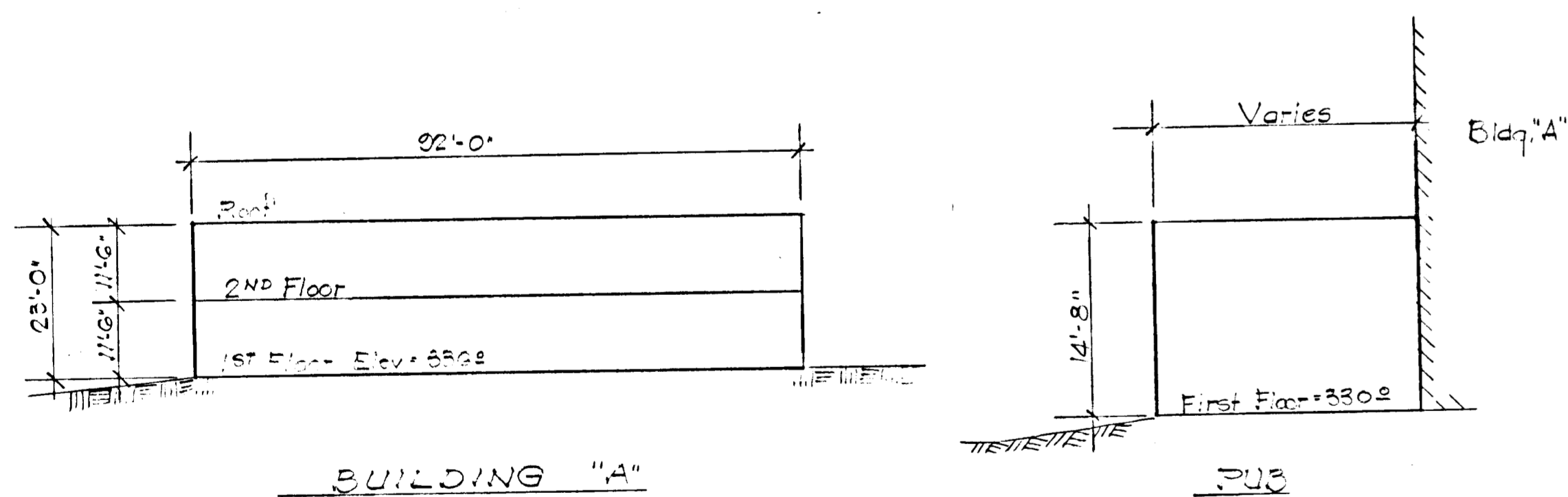
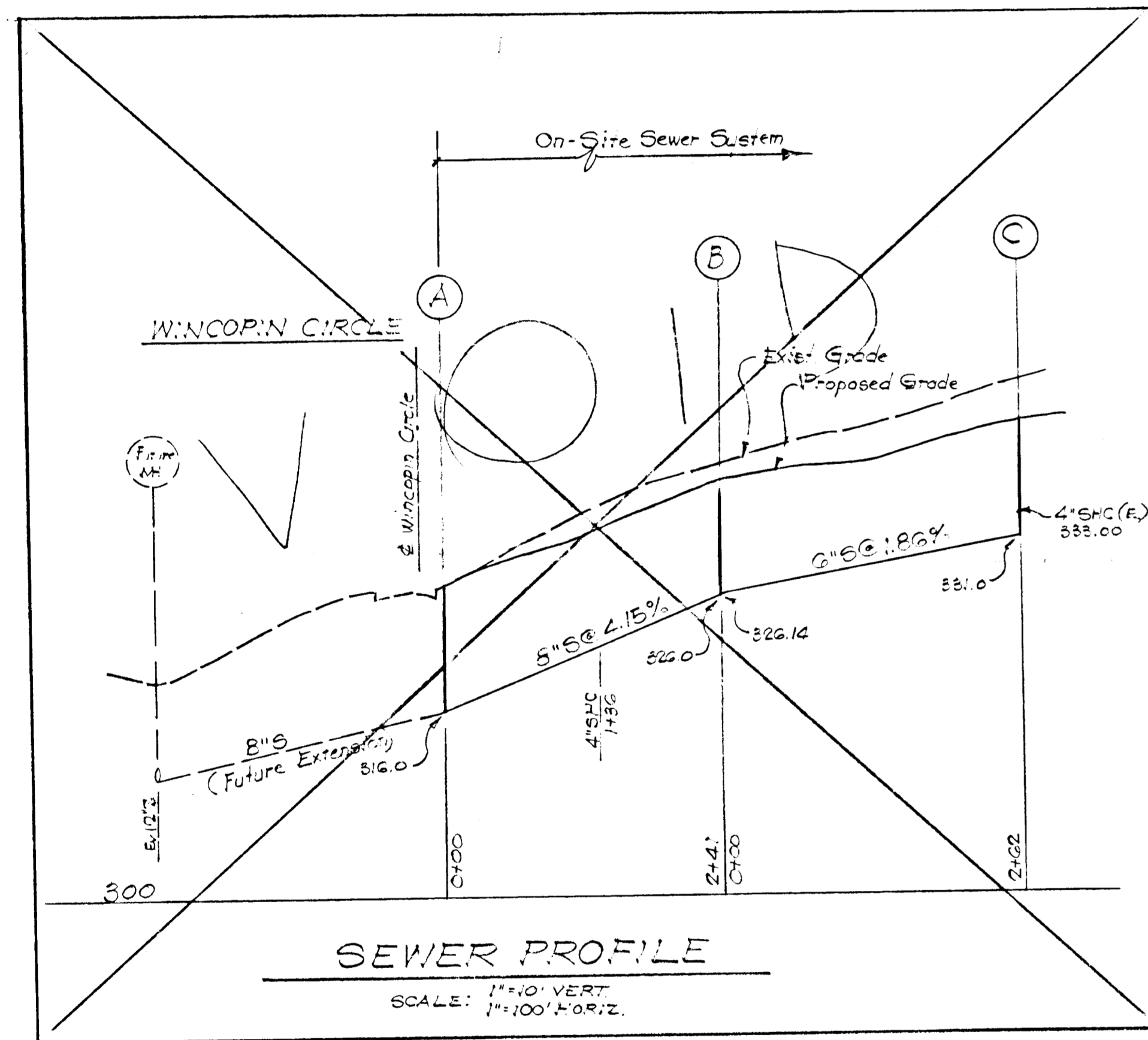


STORM DRAIN PROFILES

SCALE: 1" = 1' VERT. 1" = 20' HORIZ.



STRUCTURE SCHEDULE			
NO.	TYPE	DEPT. / OWNER	REMARKS
1	Manhole	511-2	Howard County Sid
2	Deck Drain	511-2	Josam OGS-B
3	Deck Drain	511-2	Howard County Sid
4	Manhole	511-2	Howard County Sid
5	Deck Drain	511-2	Josam OGS-B
6	Deck Drain	511-2	Howard County Sid
7	Deck Drain	511-2	Josam OGS-B
8	Deck Drain	511-2	Howard County Sid

PIPE SCHEDULE		
SIZE	TYPE	LENGTH
6"	Cast Iron	50'
8"	CSPI	270'
10"	CSPI	334'
15"	RPC/CI	150'
24"	RPC/CI	10'

* To match deck elevation
+ Cast Md. SRC Sid 18" Int'l. Grate
Must with top manhole slab.

OWNER
Howard Resources Development Corp
Columbia, Maryland

- GENERAL NOTES**
- All storm drains shall be constructed in accordance with the latest details and specifications of the Maryland State Roads Commission and Howard County.
 - Type of structures refer to the standard details of Md. State Roads Commission and Howard County.
 - Information concerning underground utilities was obtained from available records, but the contractor must determine the exact location and elevation of the mains by digging test pits by hand at all utility crossings well in advance of trenching. Clearances are less than shown on this plan. Contact Harris-Towler Associates for assistance.
 - All water and sewer construction shall be in accordance with the latest specifications of Howard County.
 - Water sewer shall be CSPI. All water mains shall be cast iron, C.I. 22 and shall be laid with a minimum of 33" of cover.
 - Block G-24B. See Howard County Sid details.

APPROVED
DIVISION OF
LAND DEVELOPMENT
OFFICE OF
PLANNING AND ZONING
OF HOWARD COUNTY
DATE: 5-28-71
MFC



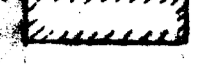
SITE DEVELOPMENT PLAN AND UTILITIES
OFFICE BUILDINGS A, B AND PUB
TOWN CENTER SECTION 7 AREA G
COLUMBIA
HOWARD COUNTY, MARYLAND

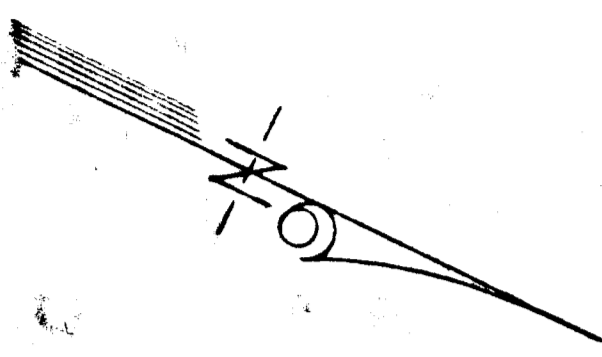
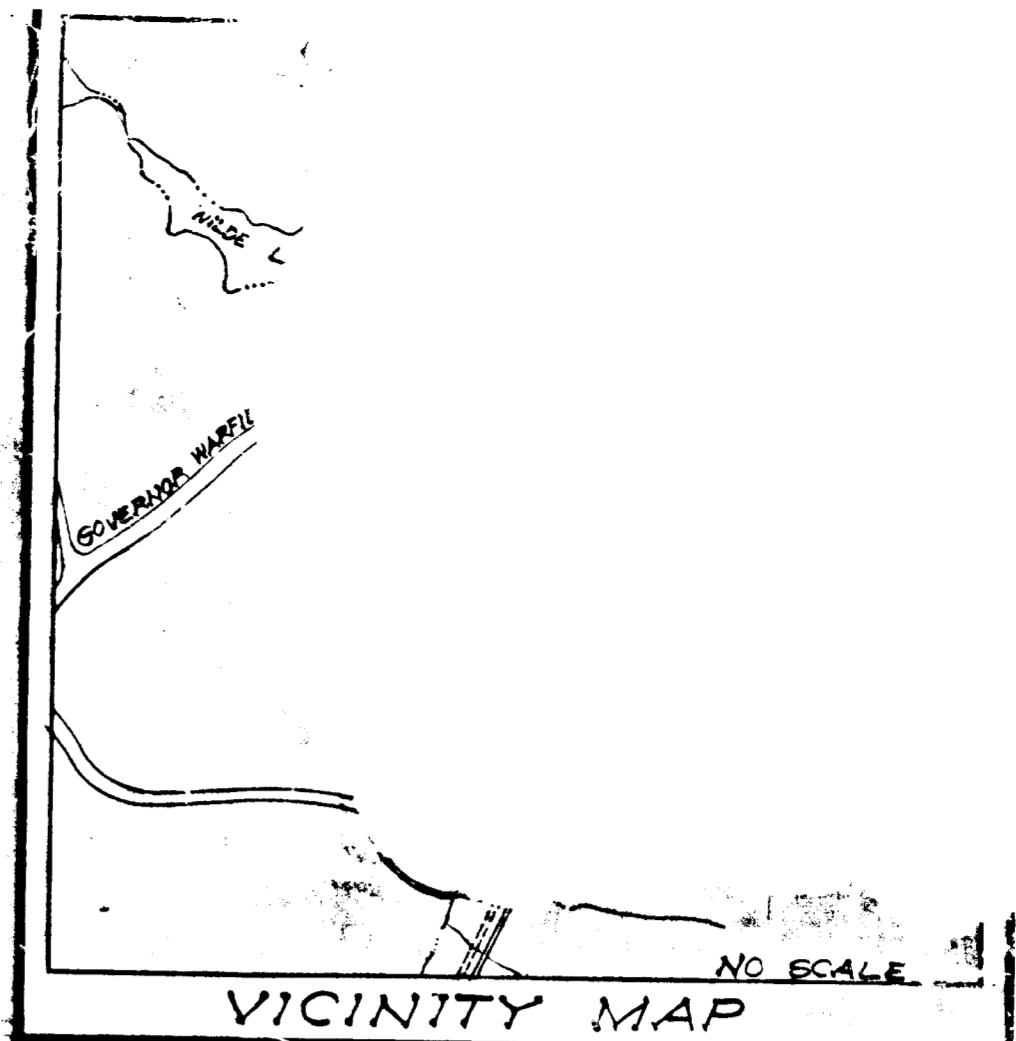
MACRIS-FOWLER ASSOCIATES
CIVIL-STRUCTURAL ENGINEERS, SURVEYORS, PLANNERS
817 SILVER SPRING AVE. 27 W. JEFFERSON ST.
SILVER SPRING, MD. 20910 ROCKVILLE, MD. 20850
1501 243-8030 1501 243-3350


REVISIONS
NO. DATE BY

DESIGNED: DMW
CHECKED: JAM
DATE: JAN 28 1971
SCALE: 1" = 10'
DRAWN: JAM
DATE: JAN 28 1971

LEGEND

-  - Concrete sidewalk & plaza
-  - Sod or Seed
-  - Previously Paved Areas





DRAINAGE AREA MAP
OFFICE BUILDINGS A & B AND PUB
TOWN CENTER SECTION 7 AREA C
COLUMBIA
HOWARD COUNTY MARYLAND

MACRIS-FOWLER
ASSOCIATES
CIVIL-STRUCTURAL ENGINEERS, SURVEYORS, PLANNERS

217 SILVER SPRING AVE. SILVER SPRING, MD. 20910
12011 742-3887

DESIGNED DRAWN
CHECKED DATE
BY
DRAWING NO.

NO.	DATE	BY

OWNER
Howard Research & Development Corp
Columbia, Maryland