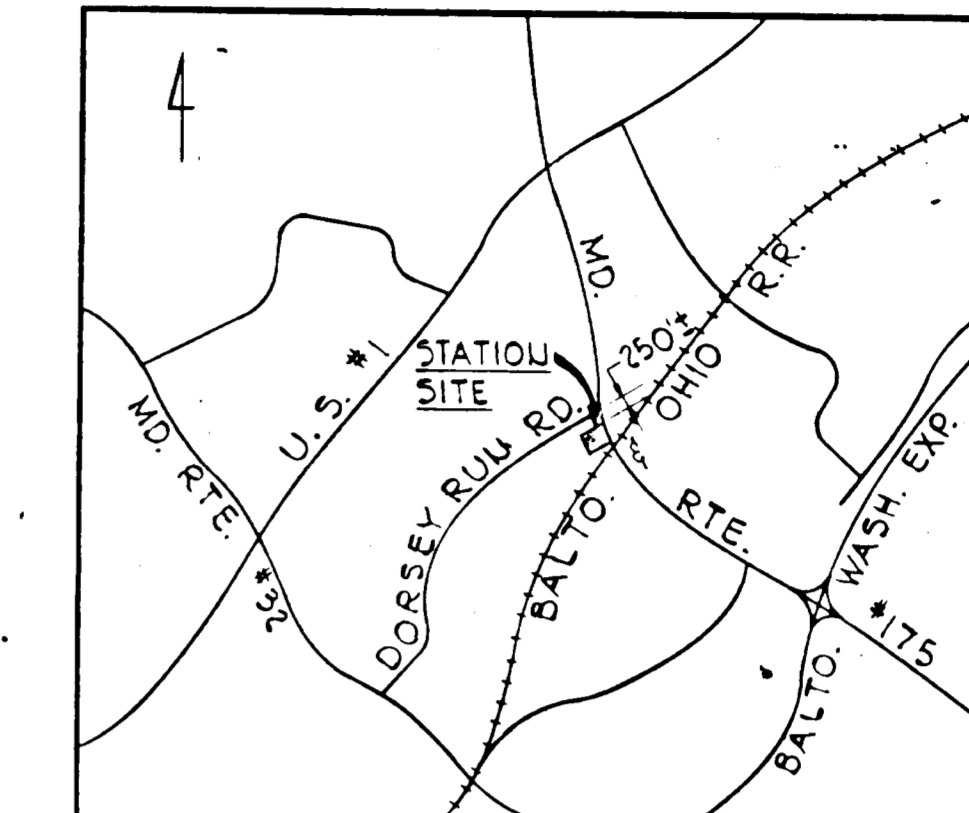
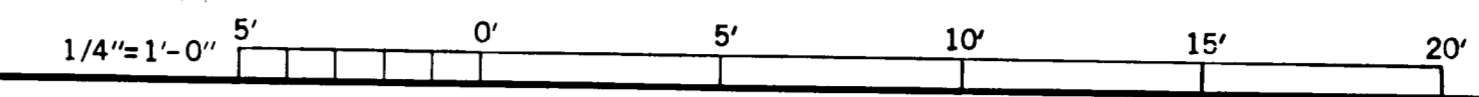
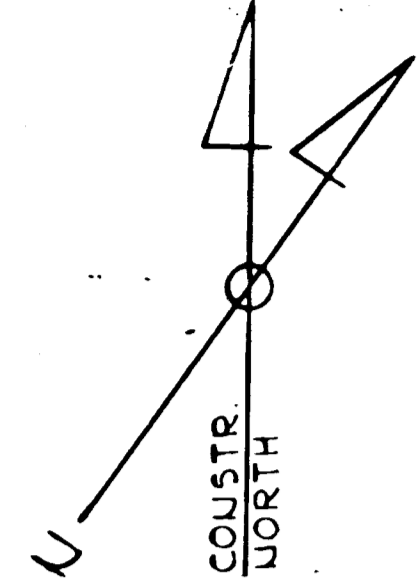


LEGEND

- - - 210 - EXISTING CONTOURS
- - - 210 - PROPOSED CONTOURS
- x 210.5 - PROPOSED SPOT ELEVATION
- - - - - PROPERTY LINE
- - - - - SETBACK LINE
- - CONCRETE MONUMENT
- x 215.0 - EXISTING SPOT ELEVATION

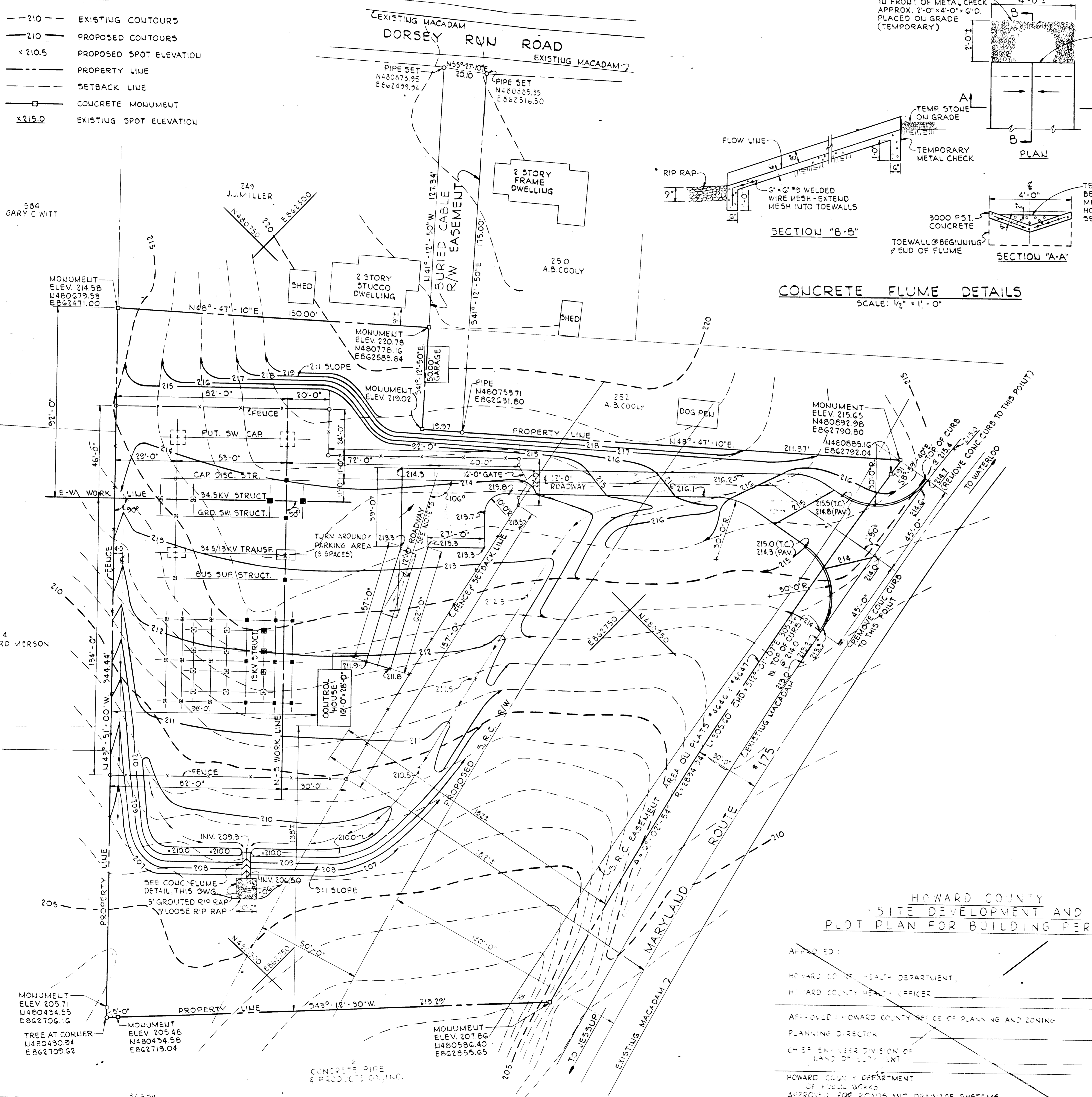
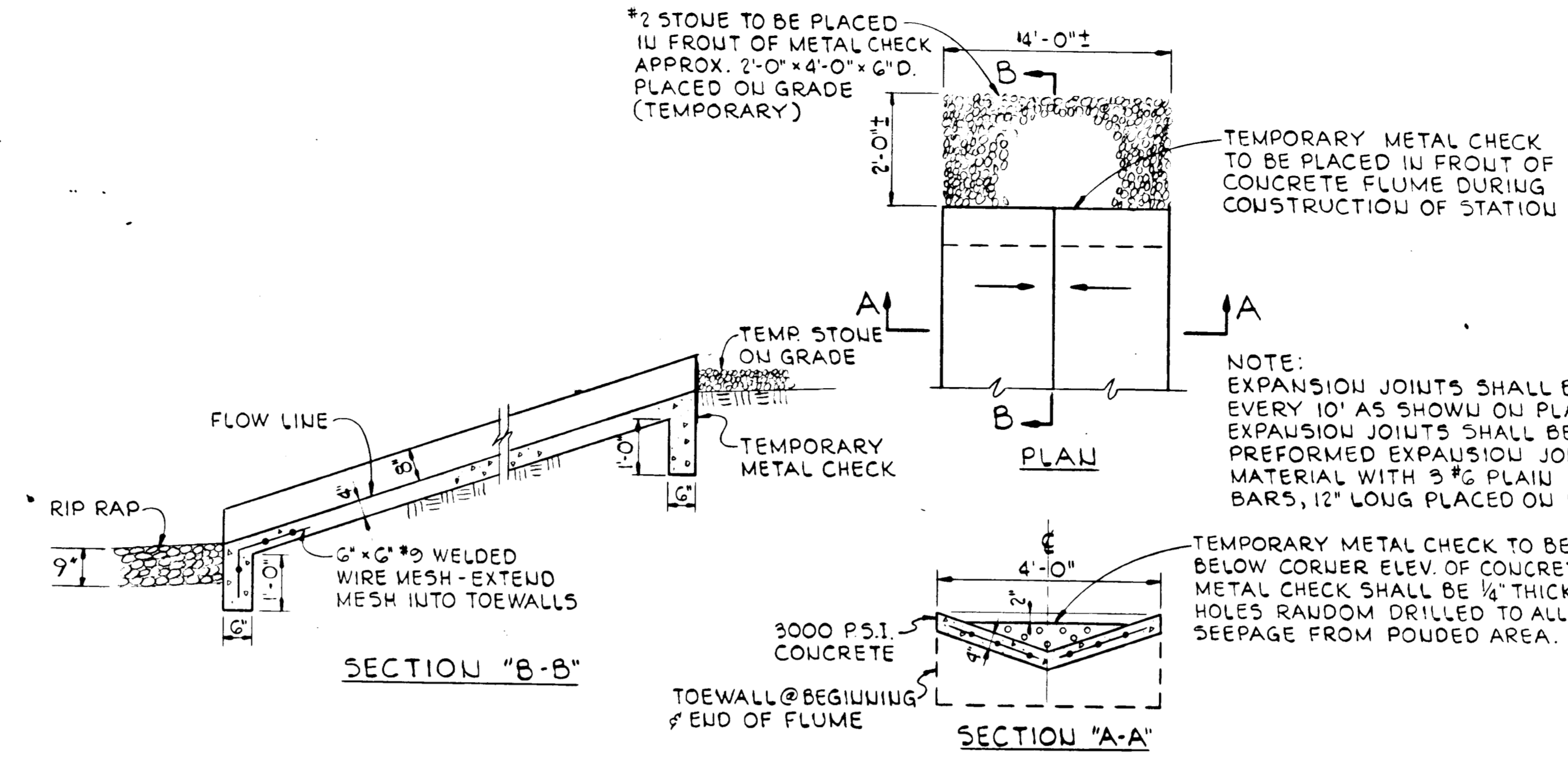


VICINITY MAP
SCALE: 1" = 1 MILE

NOTES

1. DOTTED CONTOUR LINES INDICATE EXISTING TOP OF GRADE OR ROAD AS INDICATED ON PLAT OF PROPERTY BY JAMES D. HICKS & ASSOC., INC. DATED 11-6-70. FULL CONTOUR LINES INDICATE NEW TOP OF ROAD OR GRADE FOR THIS INSTALLATION.
2. DORSEY RUN SUBSTATION IS AN UNATTENDED STATION AND NO PERMANENT EMPLOYEE WILL BE LOCATED ON THE PREMISES.
3. NO WATER SERVICE, SANITARY SEWERAGE SERVICE, SUBSURFACE STORM DRAINAGE OR OTHER PLUMBING WILL BE REQUIRED OR INSTALLED.
4. SUBSTATION OWNED, OPERATED AND CONSTRUCTED BY THE BALTIMORE GAS AND ELECTRIC COMPANY, BALTIMORE, MARYLAND, 21203.
5. ROADWAY: PRIVATE ROADWAY AND PARKING AND TURN AREA TO BE PAVED 8" CRUSHER RUN STONE, CR467, BASE WITH 2" OF P-2 BITUMINOUS CONCRETE TOPPED BY 1" OF P-16 BITUMINOUS CONCRETE. DRIVEWAY DECT. SHALL BE SIMILAR TO DWG. D-4 AS SHOWN IN HOWARD CO. ROAD CONST. CODE AND STD. SPEC. REV. AUGUST 1968.
6. FENCE TO BE CHAIN LINK CONSTRUCTION WITH AN OVERALL HEIGHT OF 4'-0" CONSISTING OF 7'-0" FABRIC WITH THREE (3) STRANDS OF BARBED WIRE TURNED OUT.
7. FOR LANDSCAPING SEE DWG. #75-107-E.
8. FOR SEDIMENT CONTROL SEE DWG. #75-105-E.
9. ELEVATIONS REFERRED TO HOWARD COUNTY BENCH MARK I.E. NO. 9 (ELEVATION 223.292) ON N.E. SIDE OF RTE. 175 EXACTLY OPPOSITE ENTRANCE TO MD. HOUSE OF CORRECTION MD COORDINATES N479038.46, E 863943.00.
10. ROAD ENTRANCE TO BE CONSTRUCTED IN ACCORDANCE WITH MD. S.R.C. PERMIT NO.

CONCRETE FLUME DETAILS
SCALE: 1/2" = 1'-0"



**HOWARD COUNTY
SITE DEVELOPMENT AND
PLOT PLAN FOR BUILDING PERMIT**

APPROVED:
HOWARD COUNTY HEALTH DEPARTMENT,
HOWARD COUNTY HEALTH OFFICER

APPROVED: HOWARD COUNTY OFFICE OF PLANNING AND ZONING
PLANNING DIRECTOR

CHIEF ENGINEER DIVISION OF
LAND DEVELOPMENT

HOWARD COUNTY DEPARTMENT
OF PUBLIC WORKS
APPROVED FOR ROADS AND DRAINAGE SYSTEMS

DIRECTOR

CHIEF OF ROAD
DIVISION

THIS PROPERTY
ZONED M-2
TAX MAP #43
PARCEL PART OF #252
DEED REFERENCE LIBRE CMP 526, FOLIO 312
2.0752 ACRES
6TH DIST. HOWARD COUNTY, MARYLAND

JAN 18, 1971
J. H. Clary

Kenneth M. Melod
WHITMAN, REARDANT AND ASSOCIATES
ENGINEERS - CONSULTANTS
1304 ST. PAUL STREET
BALTIMORE, MARYLAND

REV.	DATE	DESCRIPTION	APPROVAL

ENGINEERING	CIVIL: <i>W. J. ...</i>	Mech: <i>W. J. ...</i>	ELEC: <i>W. J. ...</i>	MANAGER: <i>W. J. ...</i>
DESIGN & DRAFTING	DESIGNED: <i>W. J. ...</i>	DRAWN: <i>W. J. ...</i>	CHECKED: <i>W. J. ...</i>	APPROVED: <i>W. J. ...</i>
SITE DEVELOPMENT AND PLOT PLAN FOR BUILDING PERMIT		34 5/8 KV. 34,000 SERVICE		
OUTDOOR SUBSTATION		DORSEY RUN		
BALTIMORE GAS AND ELECTRIC COMPANY		ELECTRIC ENGINEERING DEPARTMENT		
PERIOD FROM DWG.	SCALE: 1" = 20'-0"	REV.		
DATED	DWG. NO.			

