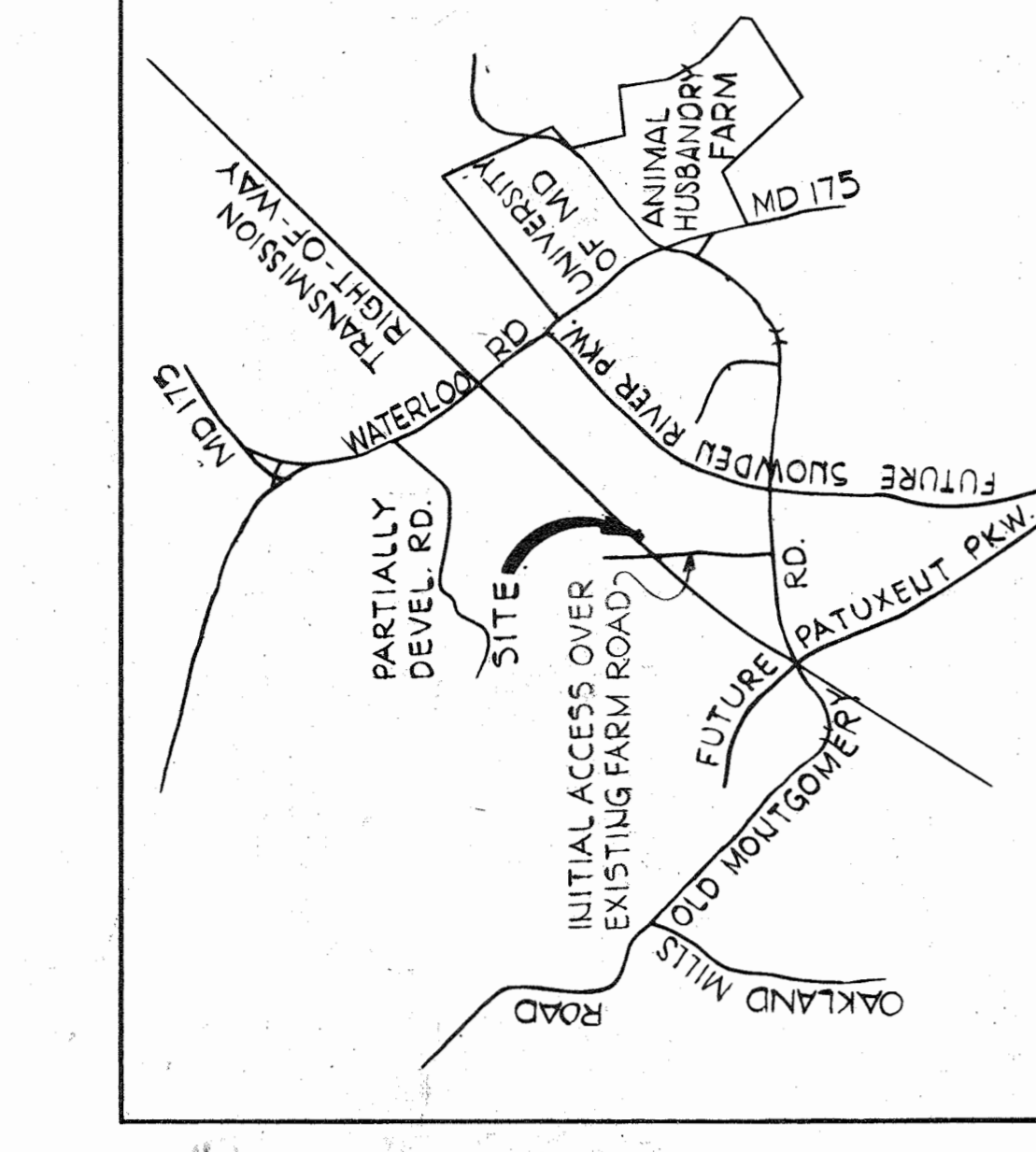
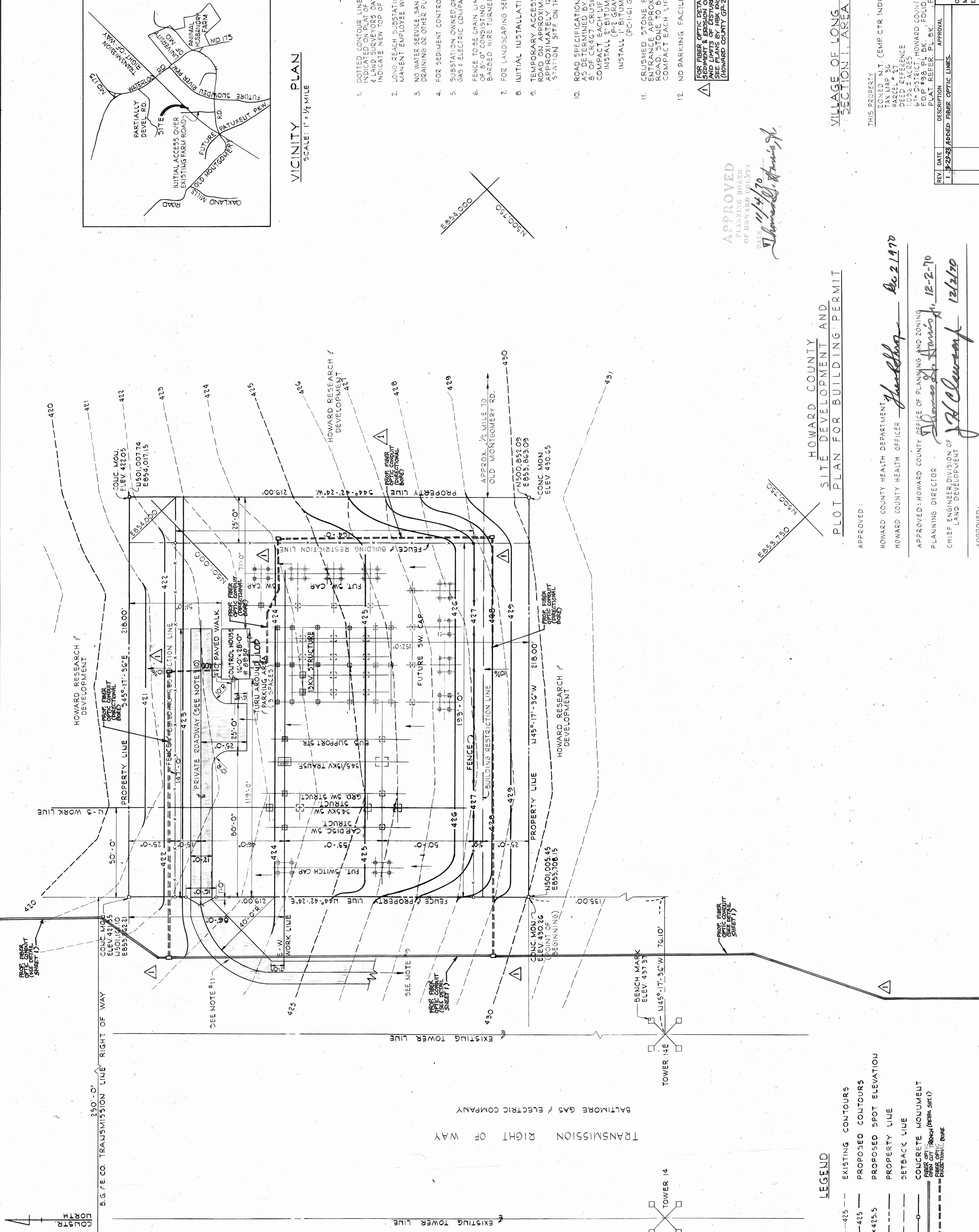




1"=10'-0" 0 10 20 30 40 50 60 70 80 90 100

1"=10'-0" 0 10 20 30 40 50 60 70 80 90 100



VICINITY PLAN  
SCALE: 1" = 1/2 MILE

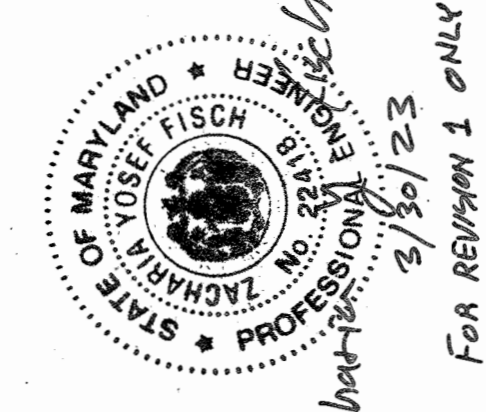
NOTES

1. DOTTED CONTOUR LINES INDICATE EXISTING TOP OF GRADE AS INDICATED ON PLAT OF PROPERTY BY PURDUM & JESCHKE ENGINEERS & LAND SURVEYORS DATED MAY 13, 1970. FULL CONTOUR LINES INDICATE NEW TOP OF GRADE OR ROAD FOR THIS INSTALLATION.
2. LONG REACH SUBSTATION IS AN UNATTENDED STATION & NO PERMANENT EMPLOYEE WILL BE LOCATED ON THE PREMISES.
3. NO WATER SERVICE, SANITARY SEWERAGE SERVICE, SUBSURFACE STORAGE DRAINING OR OTHER PLUMBING WILL BE REQUIRED OR INSTALLED.
4. FOR SEDIMENT CONTROL, SEE DWG. # 70-625-E.
5. SUBSTATION OWNED OPERATED & CONSTRUCTED BY THE BALTIMORE GAS & ELECTRIC COMPANY, BALTIMORE, MARYLAND 21205.
6. FENCE TO BE CHAIN LINK CONSTRUCTION WITH AN OVERALL HEIGHT OF 8'-0" CONSISTING OF 7'-0" FABRIC WITH THREE (3) STRANDS OF BARBED WIRE TURNED OUT.
7. FOR LANDSCAPING SEE DWG. # 70-627-E.
8. INITIAL INSTALLATION SHOWU SHADED.
9. TEMPORARY ACCESS TO SUBSTATION FROM OLD MONTGOMERY ROAD TO BE APPROXIMATELY 1200 FEET OF ROADWAY REQUIRED TO STATION SITE ON TRANSMISSION RIGHT-OF-WAY.
10. ROAD SPECIFICATIONS: COMPACT SURFACE TO 90% DENSITY AS DETERMINED BY AASHO TEST P150 METHOD TO INSTALL 8" OF CR467 CRUSHED STONE BASE IN TWO LIFTS AND COMPACT EACH LIFT WITH 10 TON ROLLER. INSTALL 2" BITUMINOUS BINDER COURSE. INSTALL 1" BITUMINOUS CONCRETE SURFACE (FC-1461 GRADATION).
11. CRUSHED STONE ROADWAY TO EXTEND FROM STATION ENTRANCE TO APPROXIMATE GRAVED SECT. OF EXISTING FARM ROAD APPROXIMATELY 1200 FEET OF ROADWAY REQUIRED IN TWO LIFTS. COMPACT EACH LIFT WITH 10 TON ROLLER.
12. NO PARKING FACILITIES ARE REQUIRED.

FOR FIBER OPTIC DETAILS, SEE PLANS BY H&K ENGINEERING (HOWARD COUNTY GP-25-04)

APPROVED  
PLANNING BOARD  
OF HOWARD COUNTY

DATE: 11/14/70  
J. J. H. H. H.



FOR REVIEW ONLY

HOWARD COUNTY  
SITE DEVELOPMENT AND  
PLOT PLAN FOR BUILDING PERMIT

APPROVED:  
HOWARD COUNTY HEALTH DEPARTMENT,  
HOWARD COUNTY HEALTH OFFICER

APPROVED: HOWARD COUNTY OFFICE OF PLANNING AND ZONING  
PLANNING DIRECTOR

CHIEF ENGINEER, DIVISION OF LAND DEVELOPMENT

APPROVED:  
HOWARD COUNTY DEPARTMENT OF PUBLIC WORKS  
DIRECTOR

CHIEF BUREAU OF HIGHWAYS

VILLAGE OF LONG REACH  
SECTION 1, AREA 3

THIS PROPERTY  
ZONED N.T. (EMP. CTR. INDUSTRIAL)  
TAX MAP 36  
DEED REFERENCE  
103% ± ACRES  
6th DISTRICT, HOWARD COUNTY, MD.  
POP. 498 PL. BK. 8V, FOLIO 1010

APPROVAL  
ENGINEERING  
MECH.  
ELECTRICAL  
MANAGER

DESIGN & DRAFTING  
DESIGNED BY  
DRAWN BY  
CHECKED BY  
DATE

OUTDOOR SUBSTATION  
LONG REACH  
BALTIMORE GAS AND ELECTRIC COMPANY  
ELECTRIC ENGINEERING DEPARTMENT  
SCALE 1" = 20'  
REV. 70-623-E

DATE

DATE

LEGEND

- 425 --- EXISTING CONTOURS
- 425 --- PROPOSED CONTOURS
- 4425.5 --- PROPOSED SPOT ELEVATION
- PROPERTY LINE
- SETBACK LINE
- CONCRETE MONUMENT
- FIBER OPTIC MONUMENT
- FIBER OPTIC MONUMENT

MAXIMUM HEIGHT OF STRUCTURES

