

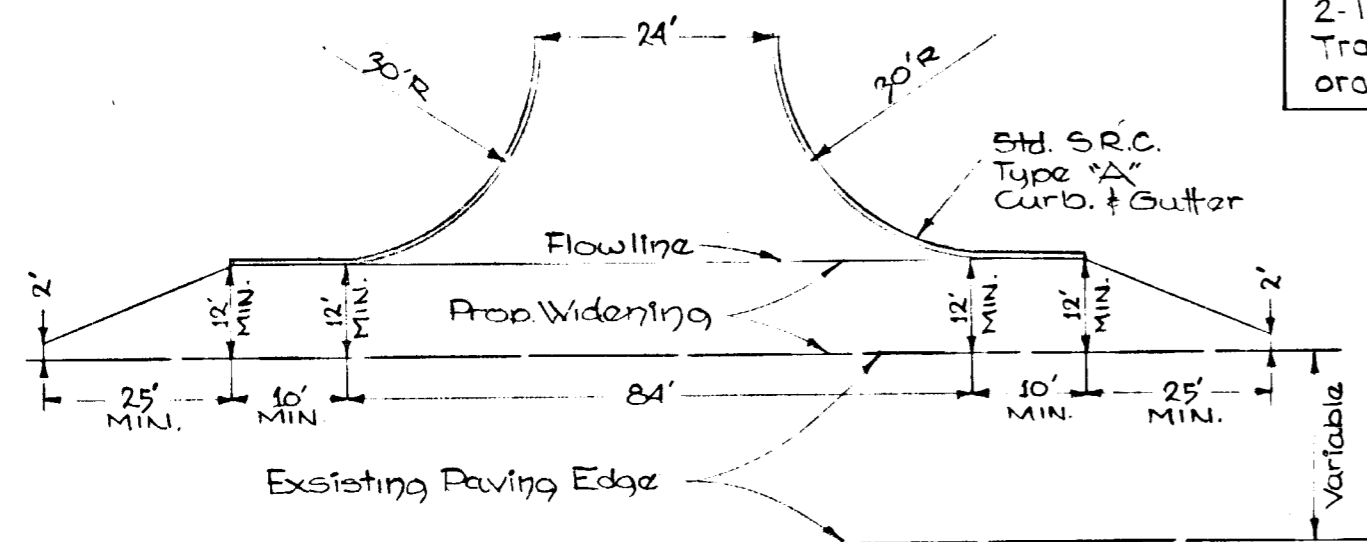
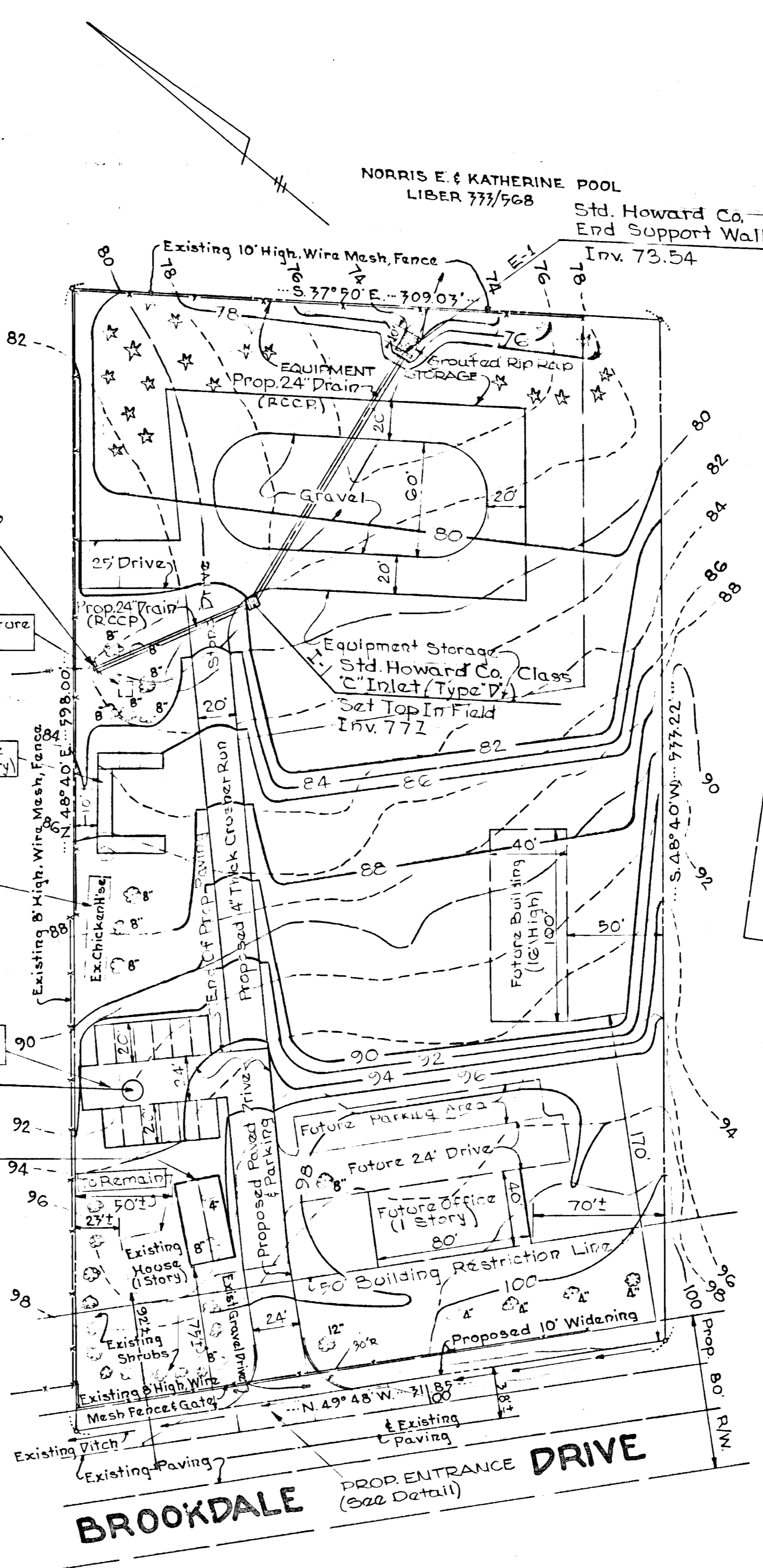
Typical Paving Section
The Paving Section Shall Be A 5" Minimum Thickness Base Course Of Crusher Run Crushed Stone Or Bank Run Gravel With A Triple Bituminous Surface Treatment Consisting Of: (a) 7/10 Gal. Asphalt And 7 1/2 LB. Of #3 Stone Per Square Yard. (b) 7/10 Gal. Asphalt And 50 LB. Of #4 Stone Per Square Yard. (c) 5/10 Gal. Asphalt And 30 LB. Of #7 Stone Per Square Yard.

Note:
Temporary Offices
Existing 4 Room House And 2 12' x 45' Mobile Offices For 8 Men And 2 Women.

B.E.M. CORPORATION
LIBER 506/639

SITE DATA

- Tax Map No. 47
- Parcel No. 117
- Existing Zoning M-2
- Total Area Of Tract Gross 4.005Ac'
Net 3.93Ac'
- Floor Area Presently Proposed 2,946 sq ft
Ultimate 7,200 sq ft
- No. Of Employees Presently Proposed 10
- Parking Data
Total Parking Presently Required @ 1 P.S./2 Employees 5 P.S.
Total Parking Proposed @ 200' Minimum Each 12 P.S.
- Total Sales Area Proposed None
- Height Of Proposed Buildings Indicated On Plan.



- LEGEND**
- Existing Contours Shown Thus ---190---
 - Proposed Contours Shown Thus ---190---
 - Existing Shrubs Shown Thus [Symbol]
 - Existing Trees Shown Thus [Symbol]
 - Existing Pine Trees Shown Thus [Symbol]

- Note:**
- Topography Based On Assumed Datum & Provided By RAYMOND INTERNATIONAL, INC.
 - Final Determination As To Proposed Sanitary Disposal System Subject To Percolation Test.
 - Private Water System Subject To Final Determination By HOWARD COUNTY HEALTH DEPARTMENT.

HOWARD CO. HEALTH DEPT.	
APPROVED: COUNTY HEALTH OFFICER	DATE
DEPT. OF PUBLIC WORKS	
APPROVED: DIRECTOR	DATE
BUREAU OF HIGHWAYS	
APPROVED: CHIEF ENGINEER	DATE
OFFICE OF PLANNING & ZONING	
APPROVED: PLANNING DIRECTOR	DATE
DIVISION OF LAND DEVELOPMENT	
APPROVED: CHIEF ENGINEER	DATE
HOWARD COUNTY SOIL CONSERVATIONIST	
APPROVED	DATE

APPROVED
OFFICE OF PLANNING
AND ZONING
HOWARD COUNTY
DATE: JAN. 13 1971

SITE PLAN
RAYMOND CONCRETE PILE DIV.
RAYMOND INTERNATIONAL INC.
BROOKDALE DRIVE

HOWARD COUNTY, MARYLAND ELECTION DIST. #1
SCALE: 1" = 50' SEPT 29, 1970

OWNER
RAYMOND INTERNATIONAL INC.
2 PENN PLAZA
NEW YORK, NEW YORK
10001

DEVELOPER
RAYMOND CONCRETE PILE DIV.
RAYMOND INTERNATIONAL INC.
1625 I. N.W.
WASHINGTON, D.C. 20006

ENGINEER
GEORGE WILLIAM STEPHENS, JR.,
AND ASSOCIATES, INC.
303 ALLEGHENY AVENUE
TOWSON, MARYLAND 21204

Charles E. Fisher 9-29-70
No. 5048

Location E-1	10/23/70
Entrance Detail	10/19/70
REVISIONS	DATE