

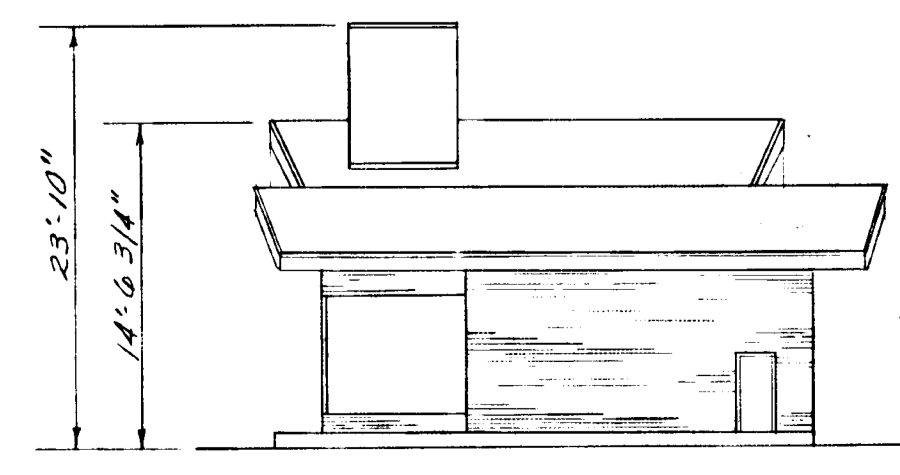
- GENERAL NOTES**
- Total area of site = 35,222 SF (0.808 AC.)
 - Existing Zoning = M-1
 - Tax Map No. 43
 - Total number of employees = 2
 - Total sales area used for retail sales of supplies and equipment = 236.02 S.F.
 - Total parking spaces required at one (1) per two (2) employees and one (1) per hundred square feet of retail sales area = 7
 - Total parking provided at 10' x 20' = 12
 - Subdivision plat reference; Plat Book Folio
 - Maximum height of any structure 26' 12" SIGN

APPROVED FOR PUBLIC WATER AND PUBLIC SEWERAGE SYSTEMS, HOWARD COUNTY HEALTH DEPARTMENT.	DATE
COUNTY HEALTH OFFICER	
APPROVED HOWARD COUNTY OFFICE OF PLANNING AND ZONING	DATE
PLANNING DIRECTOR	
CHIEF ENGINEER, DIVISION OF LAND DEVELOPMENT	DATE
APPROVED FOR PUBLIC WATER, PUBLIC SEWERAGE AND STORM DRAINAGE SYSTEMS AND ROADS HOWARD COUNTY DEPARTMENT OF PUBLIC WORKS	DATE
DIRECTOR	
CHIEF, BUREAU OF HIGHWAYS	DATE

APPROVED
DIVISION OF
LAND DEVELOPMENT
OFFICE OF
PLANNING AND ZONING
OF HOWARD COUNTY
DATE: NOV - 9 1970

SILT & SEDIMENT CONTROL:
CONTRACTOR TO CONSTRUCT A SEDIMENT DIKE OR BERM ALONG A SOUTHWEST CORNER OF LOT. OPERATIONS ARE TO BE DONE IN A MANNER TO DIRECT STORM INLET TO THE S.W. CORNER. YARD SWALE IS TO BE CONSTRUCTED TO HANDLE STORM RUNOFF. SODDING AND SEEDING OPERATIONS ARE TO BE ACCOMPLISHED AS SOON AS PRACTICAL.

RIGHT SIDE BUILDING ELEVATION
1/10 SCALE



Signature block for approval by the Howard Soil Conservation District:
"This development plan is approved for soil erosion and sediment control by the Howard Soil Conservation District."
Reviewed: *[Signature]* 12-18-70 (Date)
Approved: *[Signature]* 12-18-70 (Date)
HOWARD SOIL CONSERVATION DISTRICT

Certification by the developer:
"I certify that all development and/or construction will be done according to this plan of development and plan of silt and sediment control."
[Signature] 11/20/70 (Date)
BOSTON S. COOPER
(Signature) SHELL OIL CO. (Date)

Certification by the Professional Engineer:
"I certify that the plan of development and the plan for control of silt and erosion meets the requirements, standards, and specifications of the Howard Soil Conservation District."
[Signature] 11/20/70 (Date)
ROBERT ANSELL
(Signature) (Date)

NOTE:
Elevations Shown Hereon Based on the Survey Dated 17 July 1970 Prepared by George M. Skinner, Jr., Reg. Eng. No. 2237. Elevations Are Assumed.

TAX MAP 43 PARCEL 3 1ST ELECTION DISTRICT	
NO. DATE BY: CKD	DESCRIPTION
SHELL OIL COMPANY EASTERN MARKETING REGION 200 EAST JOPPA RD. TOWSON, MD.	
SITE PLAN U.S. ROUTE NO. 1 & MD. RTE 175 HOWARD COUNTY, MARYLAND	
SCALE 1" = 10'-0"	DIST. OR APPR.
DATE 11 September 1970	REG. OR APPR.
DRAWN BY TM	2166-70
CHECKED BY	D