

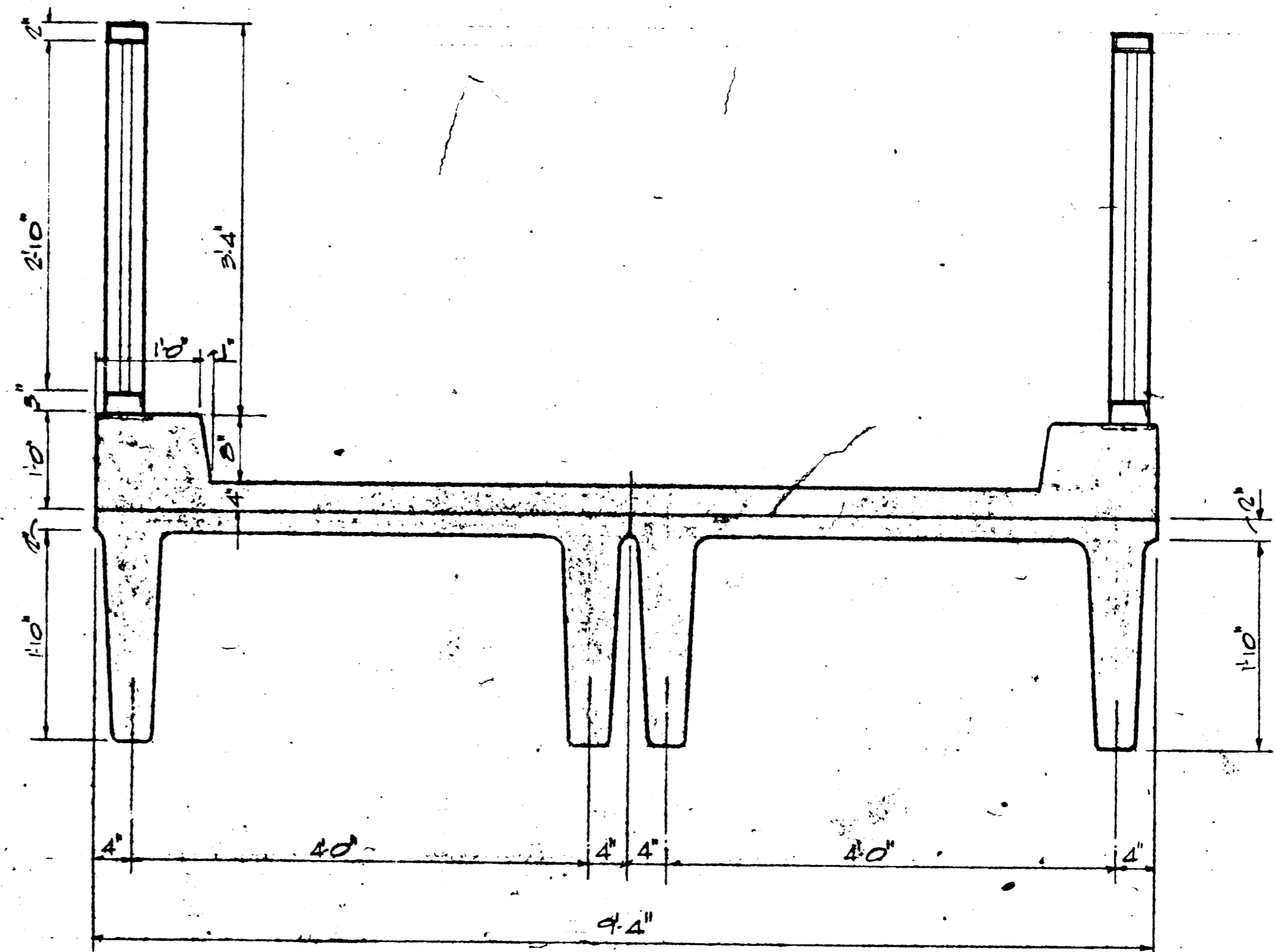
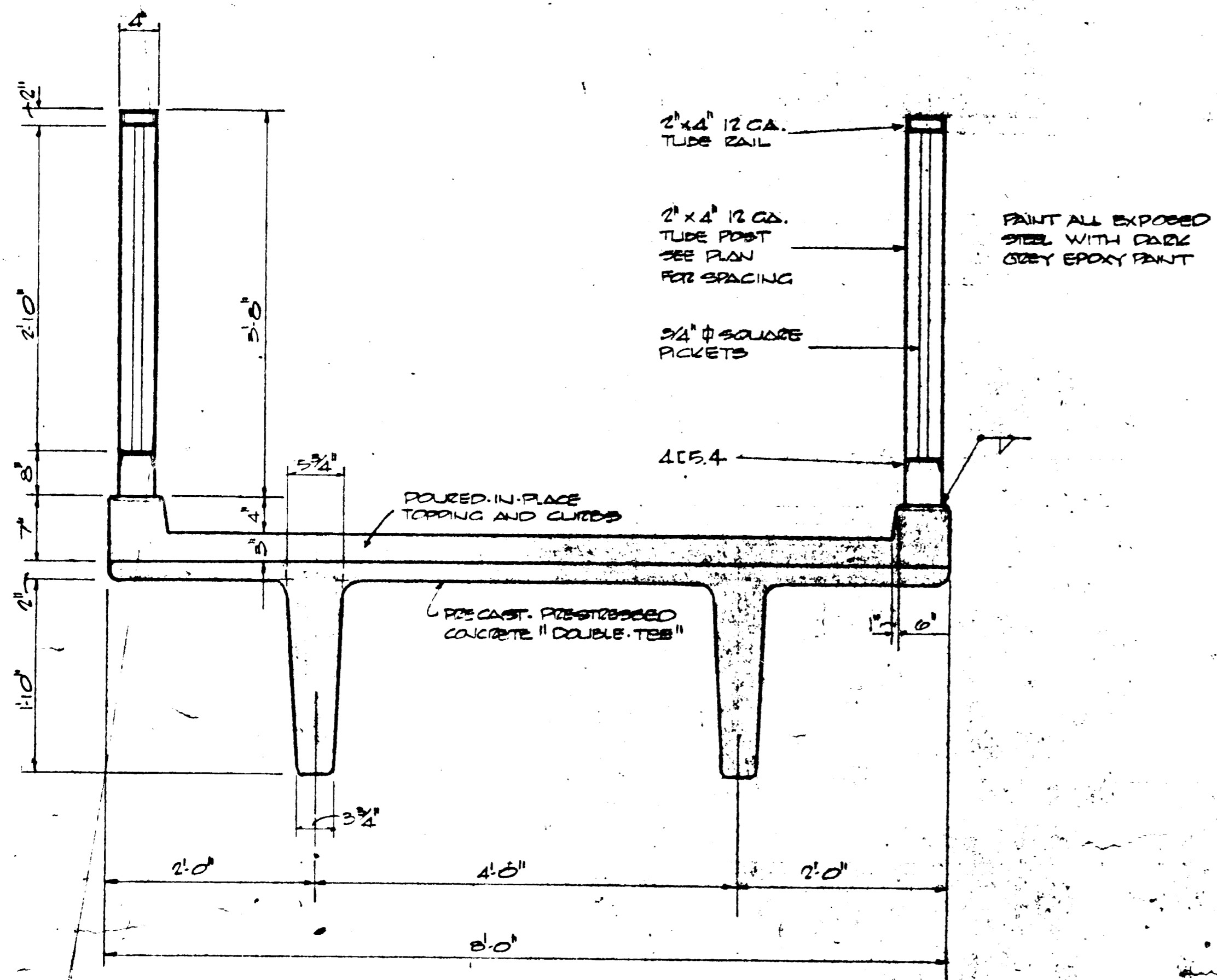
V. W. L.
 PEDESTRIAN BRIDGE
 AT RUNNING BROOK NEIGHBORHOOD CENTER
 COLUMBIA, MARYLAND

BELTWAY CONSTRUCTION CO., INC.
 2401 SEMINARY RD.
 ALEXANDRIA, VIRGINIA

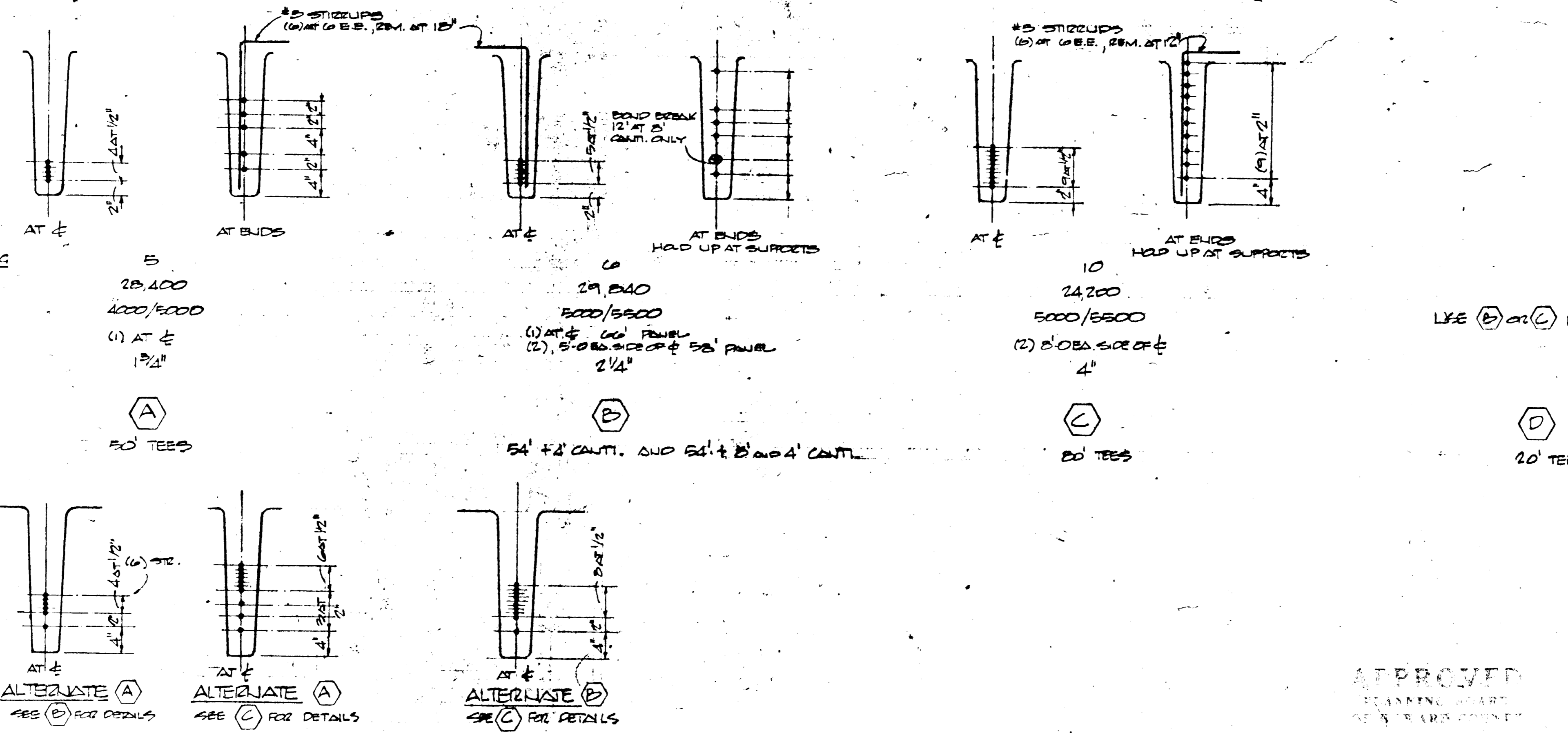
ALVIN W. DUNBAR
 CONSULTING STRUCTURAL ENGINEER
 107 E. CARY ST., RICHMOND, VA.

MAY 7, 1970 SHEET

APPROVED
 7-6-70
 [Signature]



TYPICAL BRIDGE CROSS-SECTIONS
 SEE PLANS FOR WIDTHS



NUMBER OF 1/2" LOW STRESS STRAND BARS: 5
 INITIAL STRAND TENSION: 28,400
 RELEASE STRENGTH / 28 DAY STRENGTH: 4000/6500
 HOLD DOWNS: (1) AT E 1 3/4"

PANEL MARK

(A)

20 TEES

(B)

54' ± 2' CANT. AND 54' ± 2' AND 4' CANT.

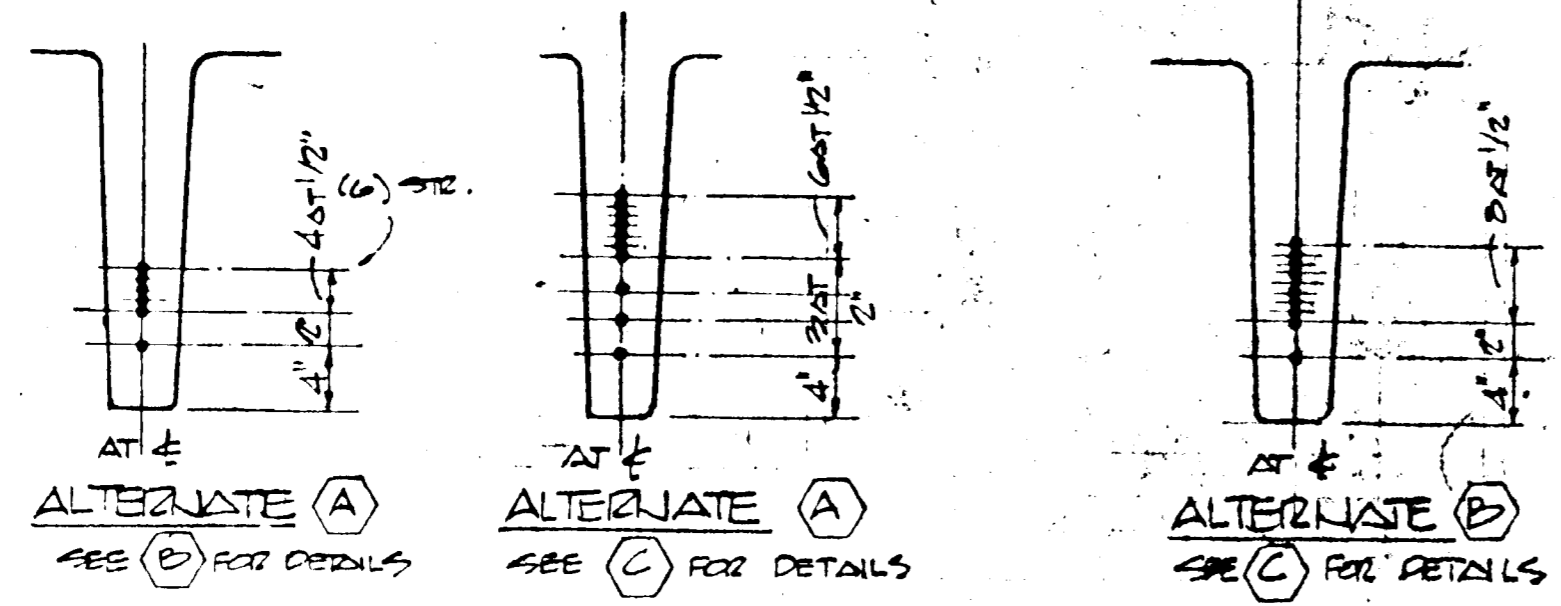
(C)

20 TEES

(D)

20 TEE

USE (B) OR (C) PARALLEL



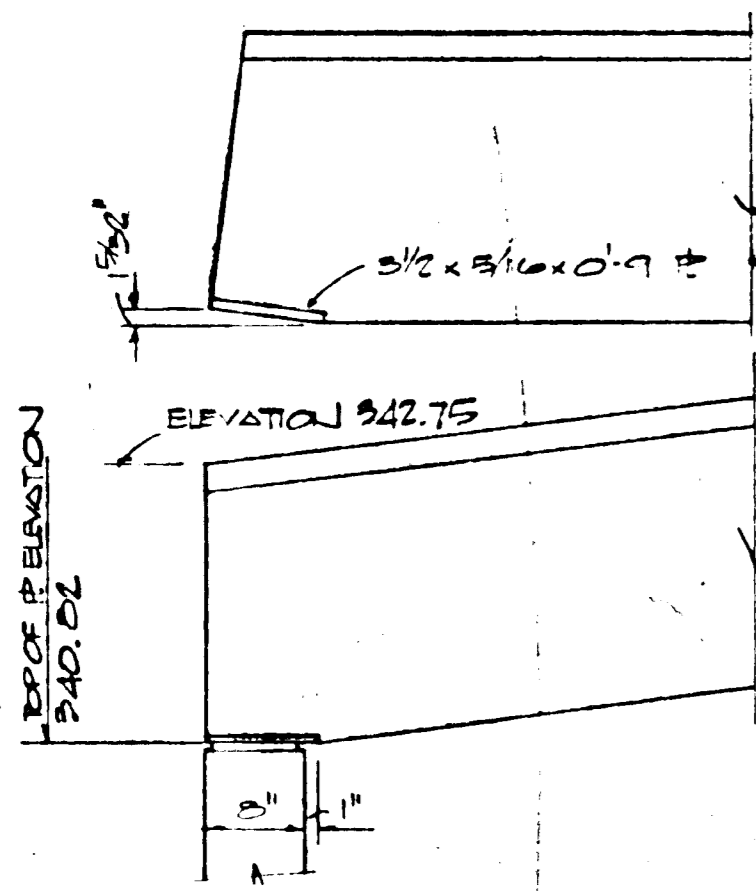
APPROVED
 PLANNING DEPT.
 7-6-70
 [Signature]

V.W.L.
 PEDESTRIAN BRIDGE
 COLUMBIA, MARYLAND

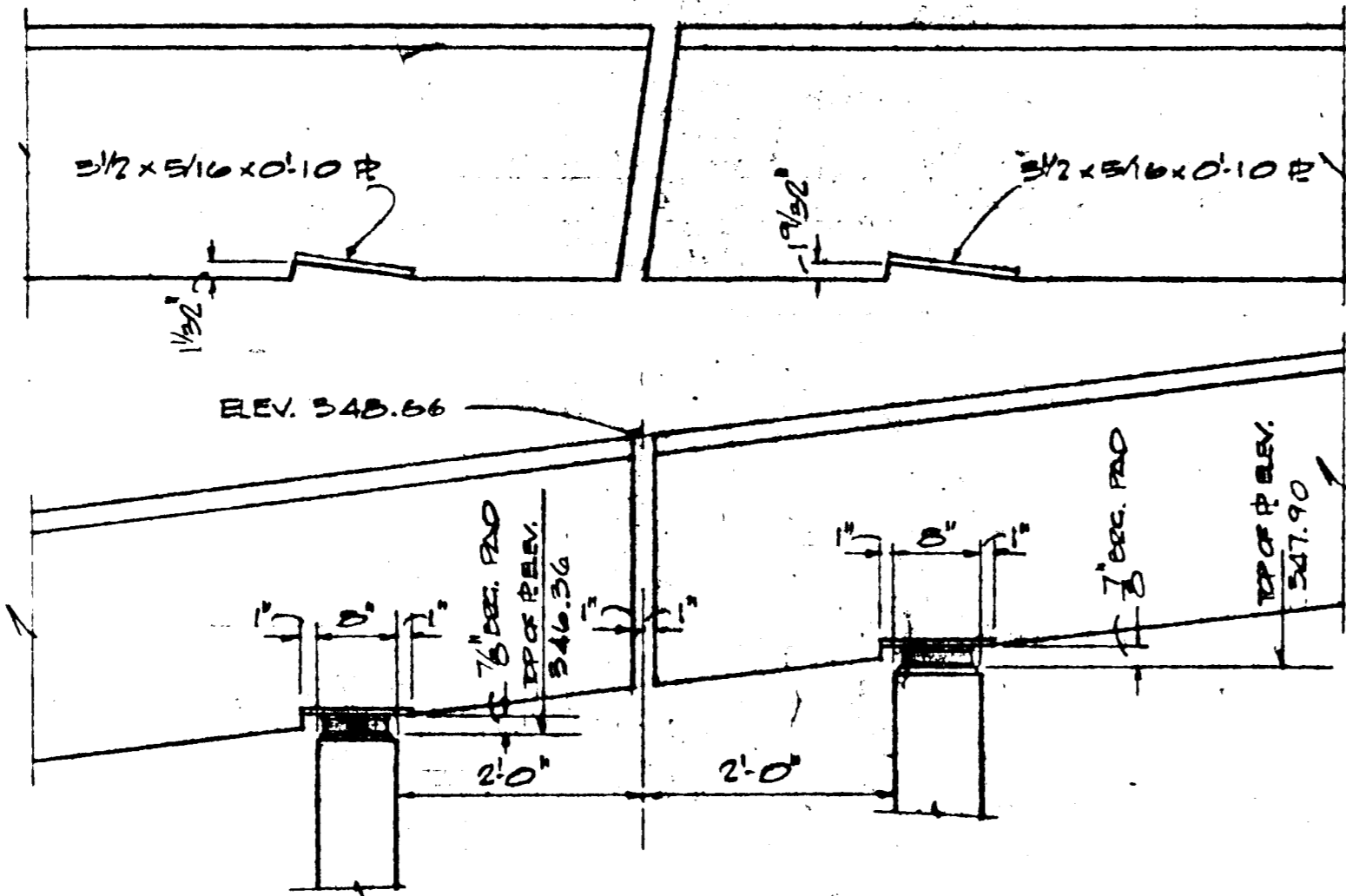
BELTWAY CONSTRUCTION CO., INC.
 1401 SEMINARY RD.
 ALEXANDRIA, VIRGINIA

ALVIN W. DUNBAR
 CONSULTING STRUCTURAL ENGINEER
 107 E. CARY ST., RICHMOND, VA.

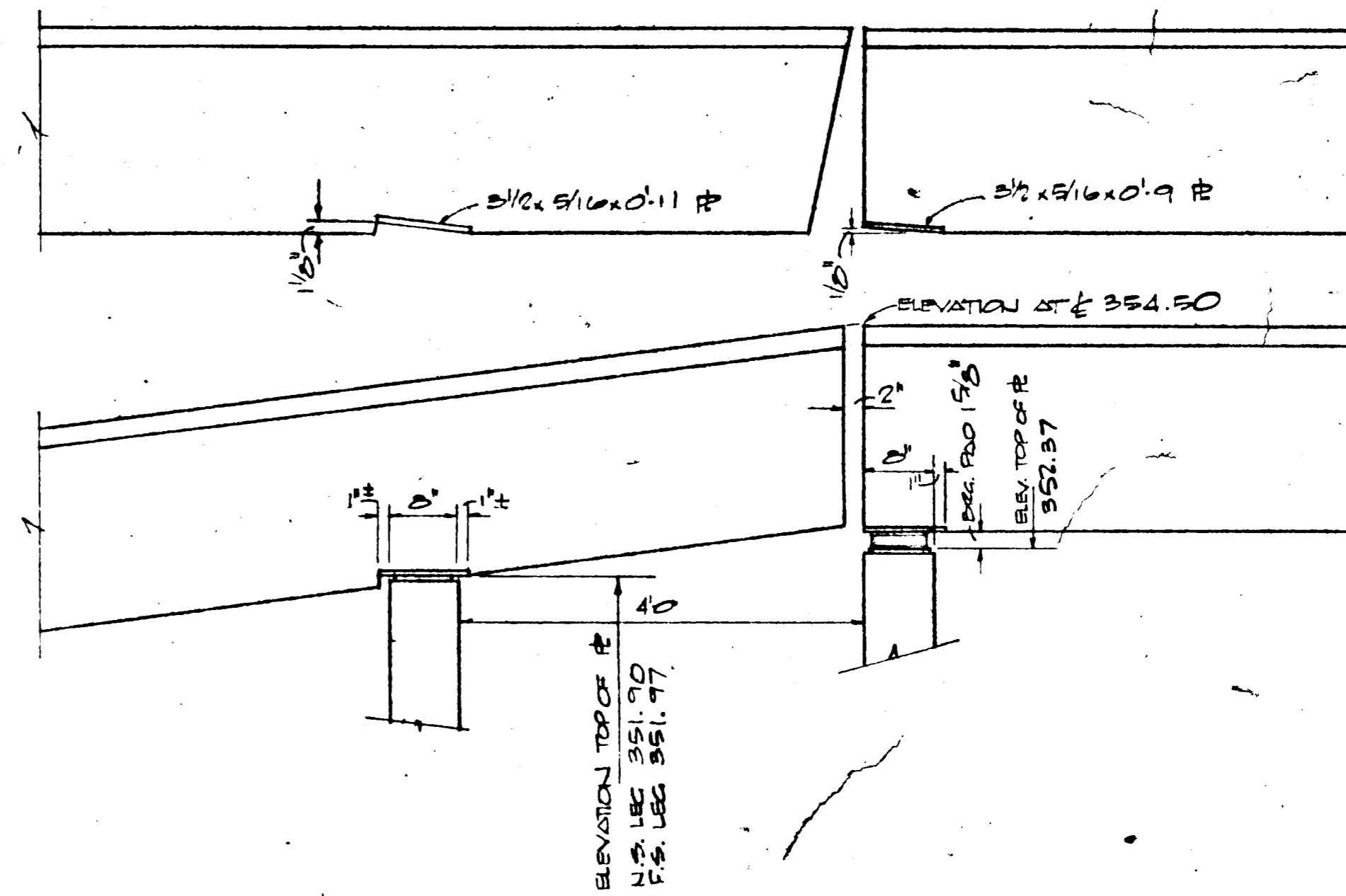
MAY 7, 1970 SHEET 3



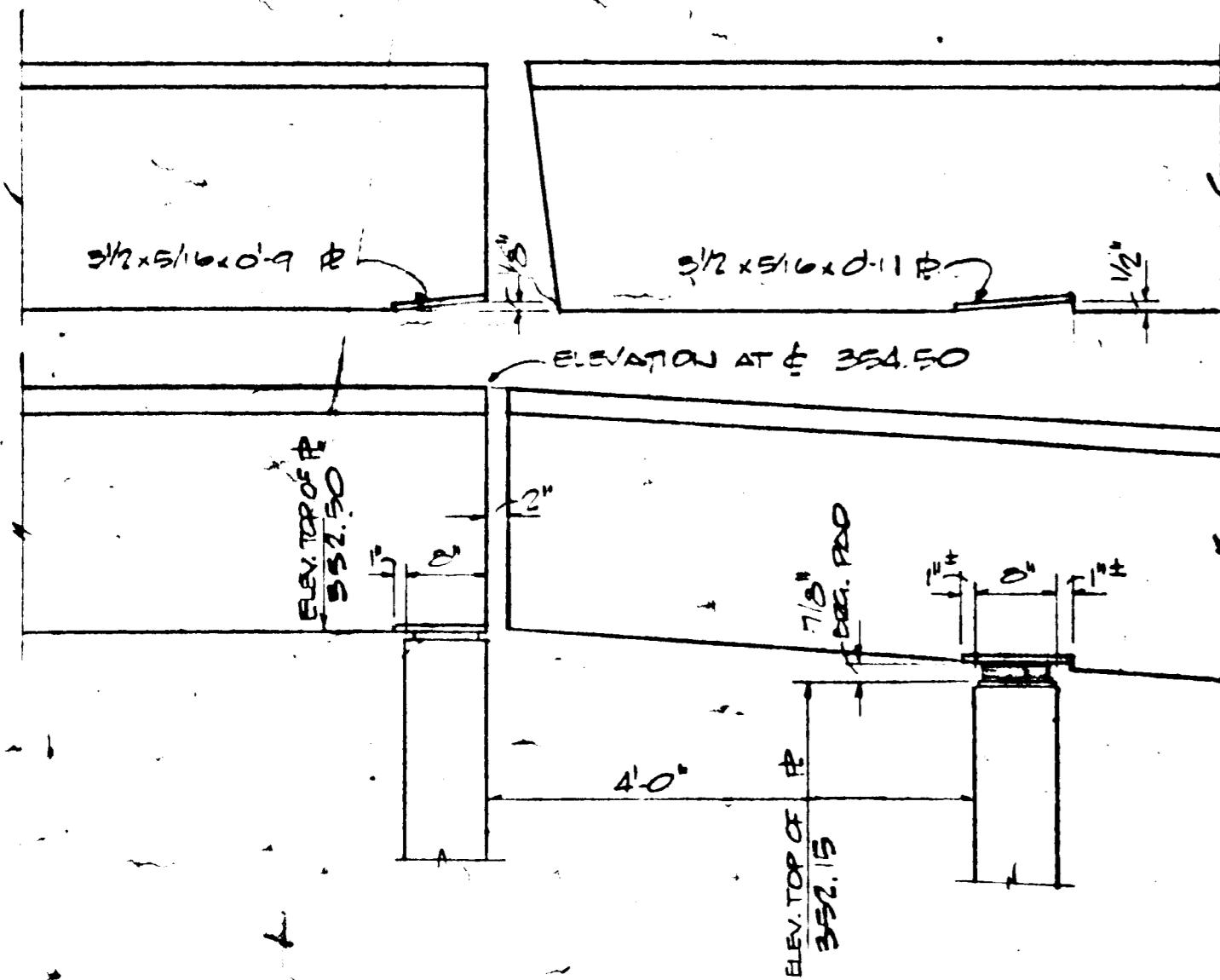
PIER 1



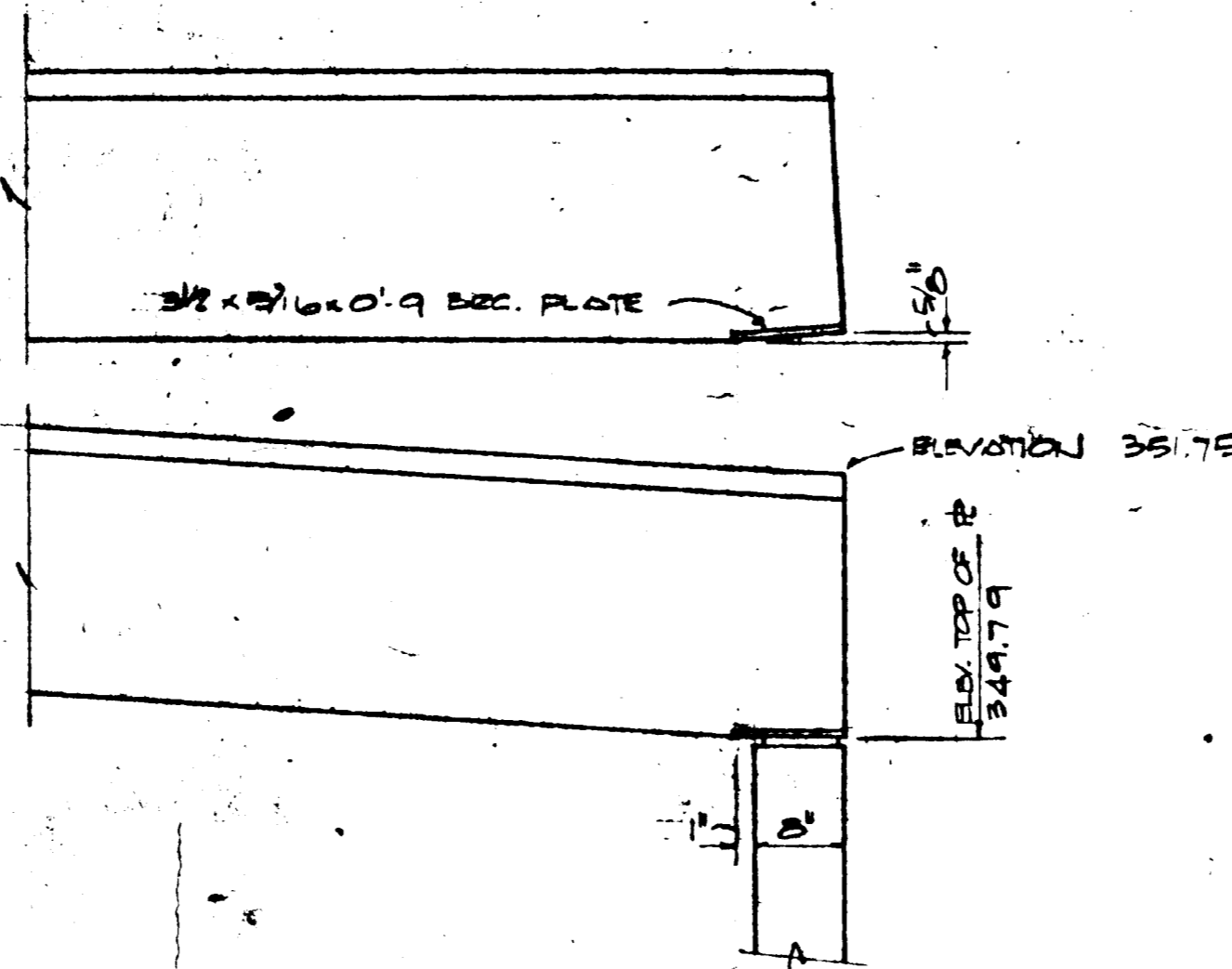
PIER 2



PIER 3



PIER 4



PIER 5

DOUBLE TEE BEARING AND END DETAILS

V.W.L.
PEDESTRIAN BRIDGE
COLUMBIA, MARYLAND

BELTWAY CONSTRUCTION CO., INC.
4901 SEMINARY RD.
ALEXANDRIA, VIRGINIA

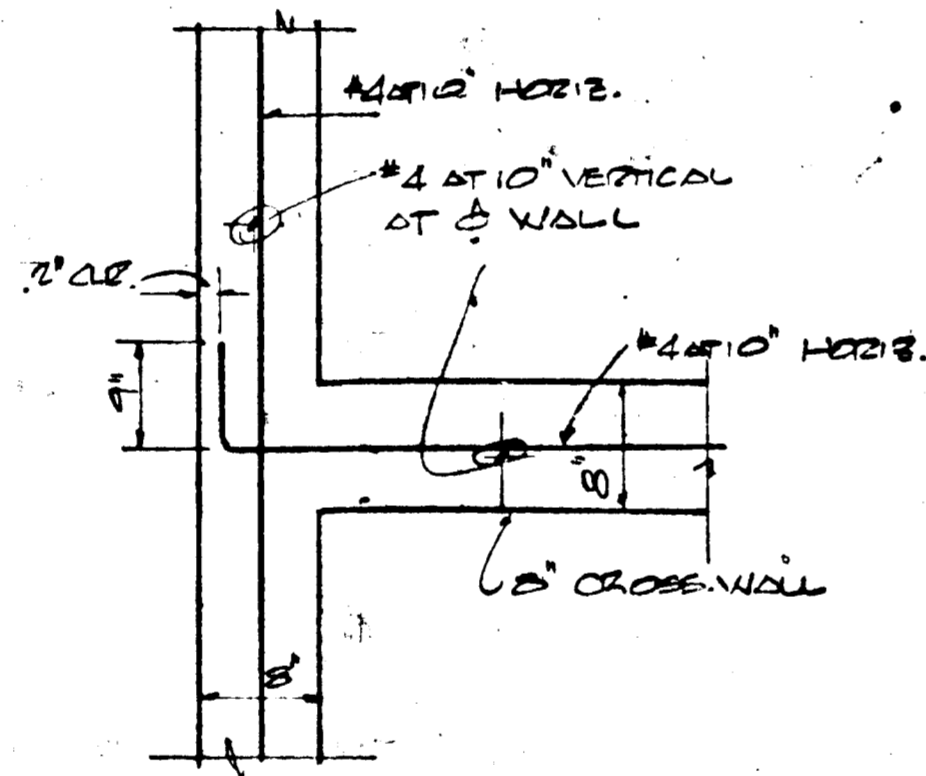
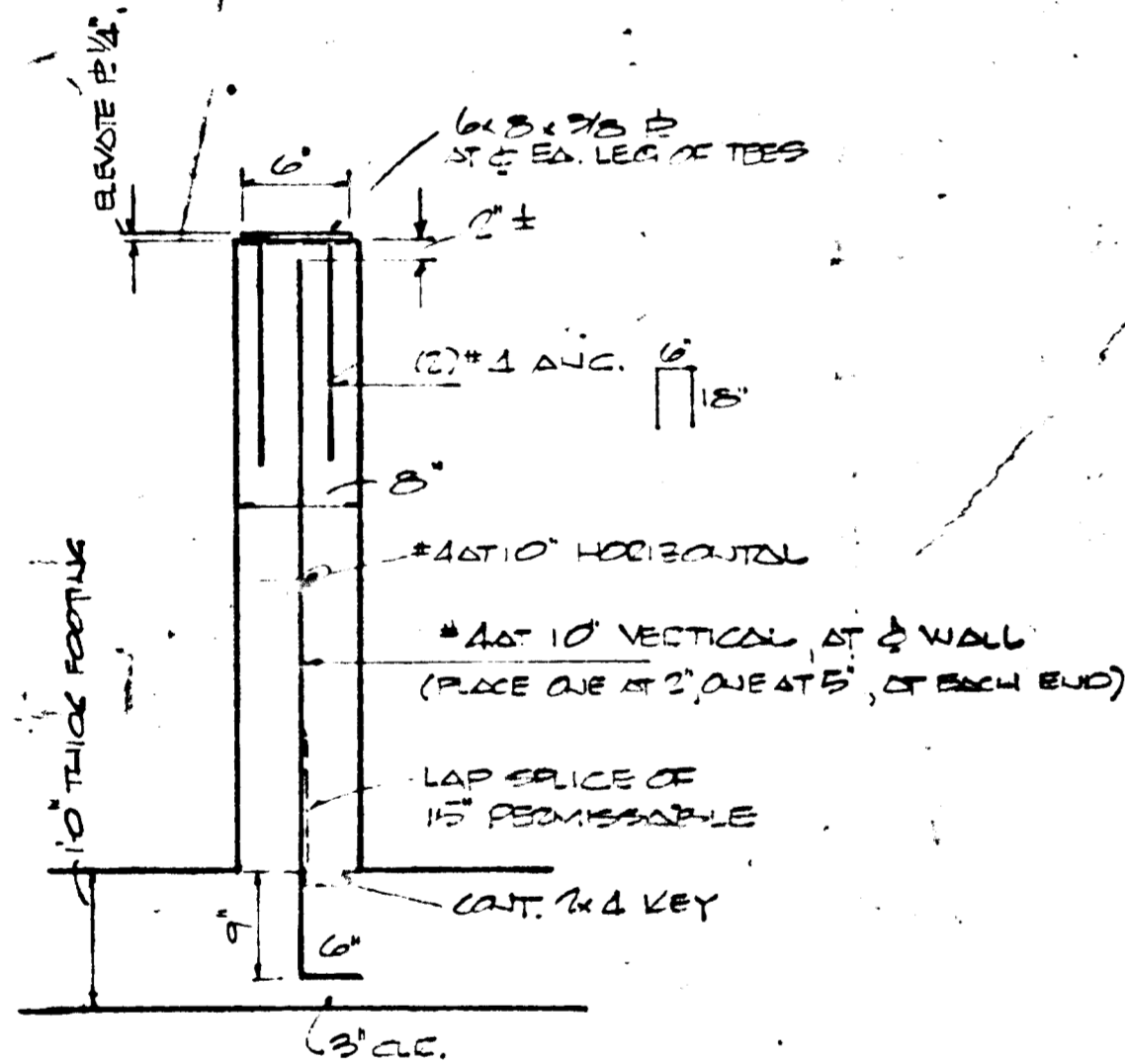
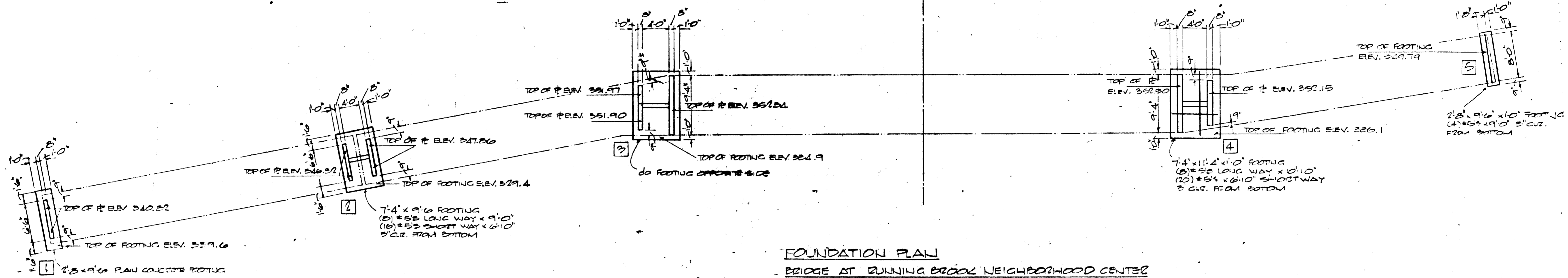
ALVIN W. DUNBAR
CONSULTING STRUCTURAL ENGINEERS
1078 CARY ST., RICHMOND, VA.

MAY 21, 1970 SHEET 3/4

APPROVED
PLANNING BOARD
OF HOWARD COUNTY

DATE 7-6-70

J. J. Harris



SOIL CAPACITY ASSUMED TO BE 3000 PSF, AND ALL FOOTINGS SHALL LOWERED IF NECESSARY TO BEAR ON AN UNDISTURBED SOIL STRATUM CAPABLE OF SUSTAINING SUCH A LOAD.

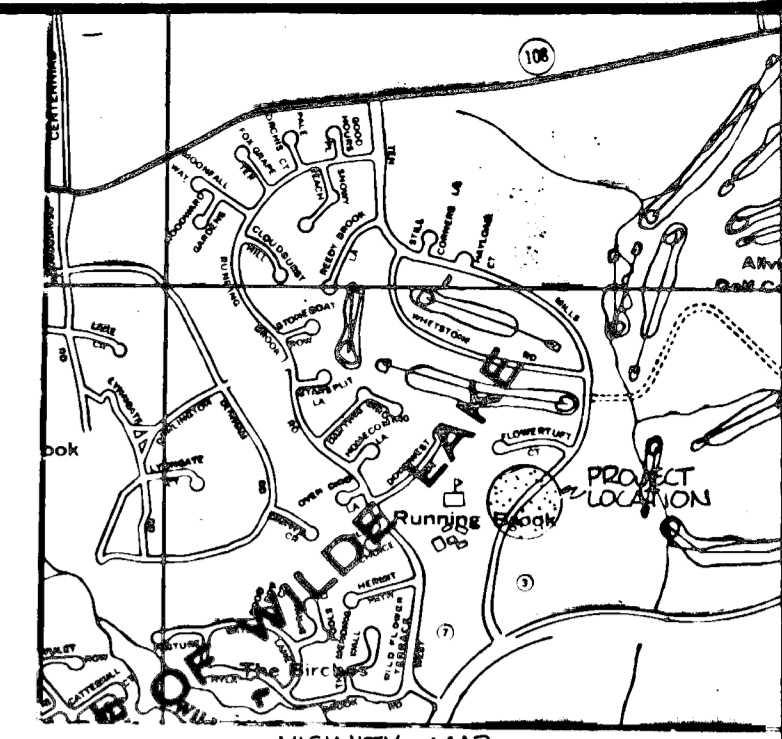
APPROVED
 PLANNING BOARD
 OF HOWARD COUNTY
 DATE 7-6-70
 [Signature]

V.W.L.
 PEDESTRIAN BRIDGE
 COLUMBIA, MARYLAND

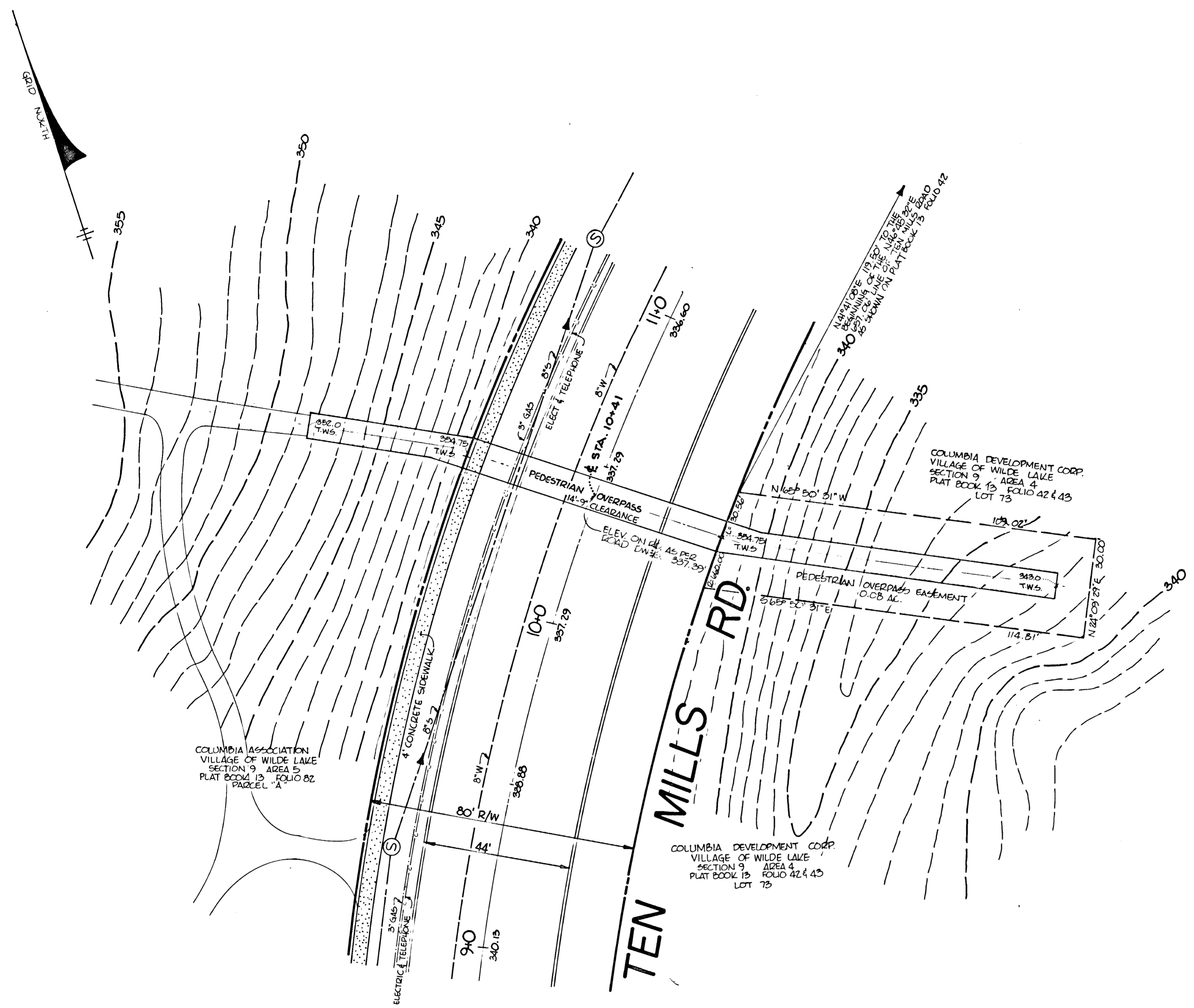
BELTWAY CONSTRUCTION CO., INC.
 4701 SEMINARY DR.
 ALEXANDRIA, VIRGINIA

ALVIN W. DUNBAR
 CONSULTING STRUCTURAL ENGINEER
 107E. CARY ST., RICHMOND, VA.

MAY 27, 1970 SHEET 2



VICINITY MAP
SCALE: 3/4" = 1 MI.



T.W.S - TOP OF WALKWAY SLAB

APPROVED
PLANNING BOARD
OF HOWARD COUNTY
DATE 7-6-70
J. H. ...

APPROVED FOR PUBLIC/PRIVATE WATER AND PUBLIC/
PRIVATE SEWERAGE SYSTEMS, HOWARD
COUNTY HEALTH DEPARTMENT
J. H. ... Sept 11 1970
APPROVED: HOWARD COUNTY OFFICE OF PLANNING AND ZONING
Thomas A. ... 9-1-70
J. H. ... 3-31-70
APPROVED FOR PUBLIC WATER, PUBLIC SEWERAGE AND
STORM DRAINAGE SYSTEMS AND ROADS
HOWARD COUNTY DEPARTMENT OF PUBLIC WORKS
Stephen S. O'Neil 8-31-70
Bill McLean 8/31/70

APPROVED
Howard Research & Development Corp.
by *OCG* date 7/1/70
Engineering & Land Development

Rev Date	Rev No	Revision Description
COLUMBIA MARYLAND OWNER AND DEVELOPER HOWARD RESEARCH AND DEVELOPMENT CORP. THE VILLAGE OF CROSS KEYS - BALTIMORE, MARYLAND 21210		
PROJECT AREA VILLAGE OF WILDE LAKE SECTION 9 - RUNNING BROOK		
PROJECT TITLE PEDESTRIAN OVERPASS SITE PLAN		
Des By	Scale 1" = 20'	Dwg No
Drn By C-CREAMER	Date 6-9-70	C.C.F. No
Chk By	Approved	B-9-0-70450