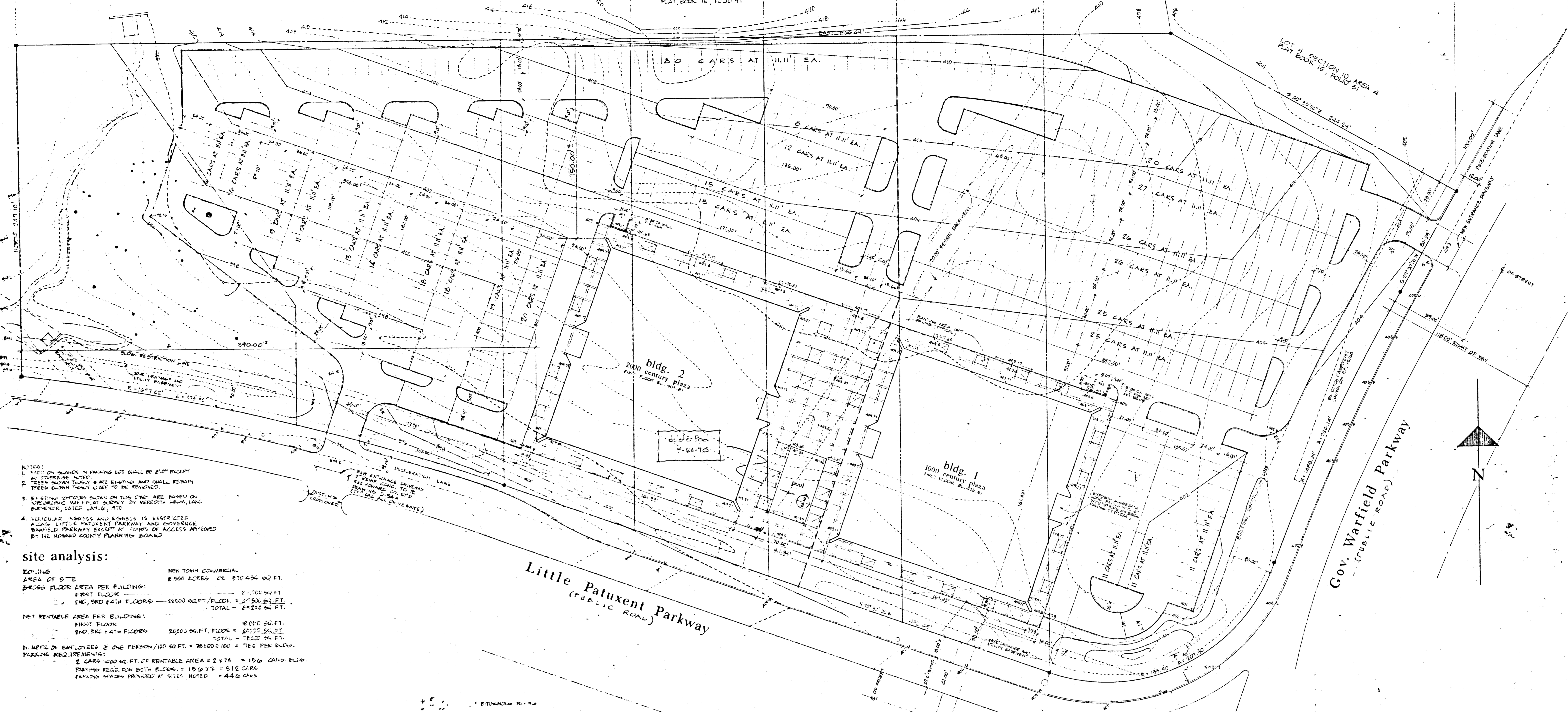


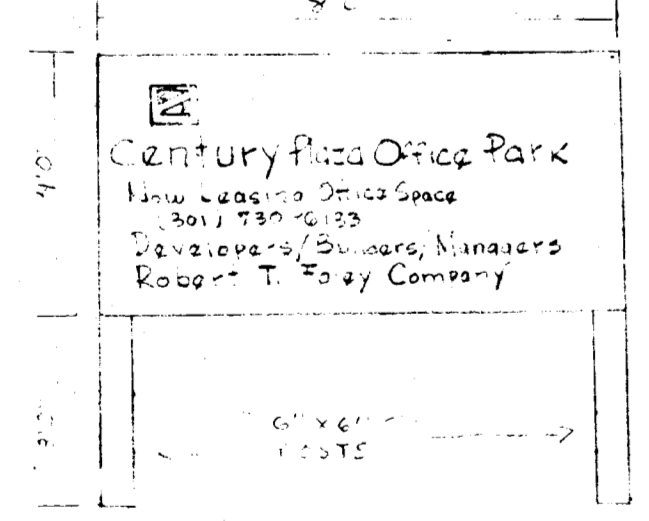
PHASE 2 parcel 7 parcel 6 parcel 5 parcel 4 parcel 3 parcel 2 parcel 1 PHASE 1



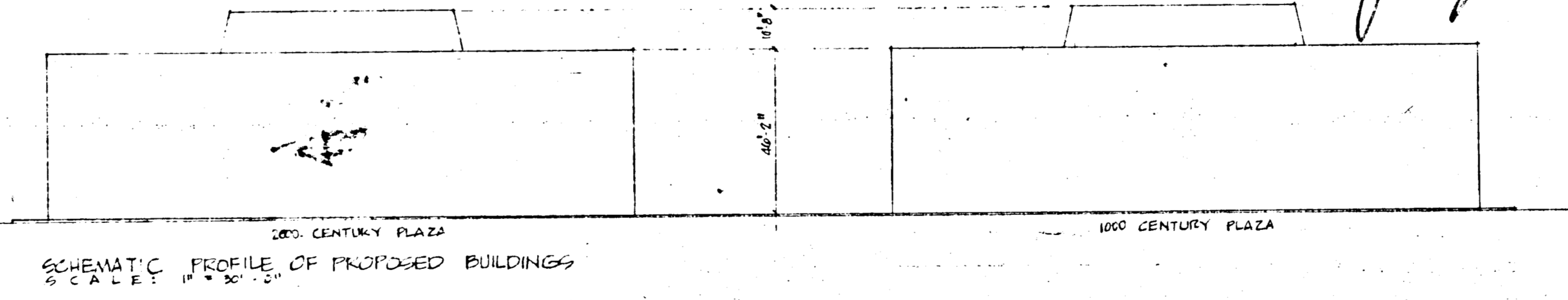
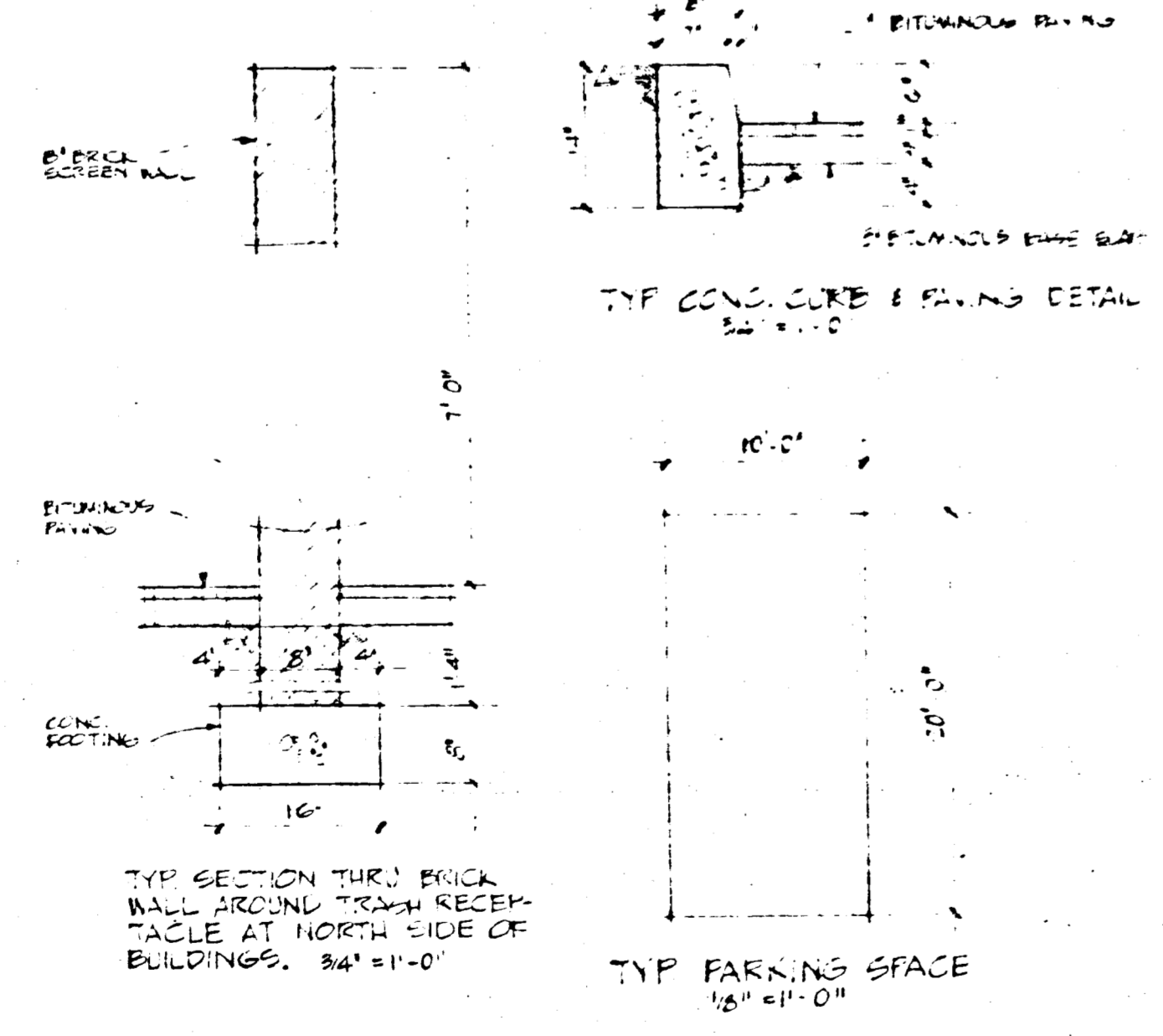
- NOTES:
1. ALL ON-SITE PARKING LOTS SHALL BE 20' EXCEPT AS SHOWN OTHERWISE.
 2. TREES SHOWN WITH DATE TAGS AND SHALL REMAIN. TREES SHOWN WITHOUT DATE TAGS TO BE REMOVED.
 3. ALL UTILITIES SHOWN ON THIS PLAN ARE BASED ON OFFICIAL MAPS THAT SHOWS BY NEAREST MEANS. ENGINEER, DATED JAN. 2, 1970.
 4. VEHICULAR TRAFFIC AND ACCESS IS RESTRICTED ALONG LITTLE PATUXENT PARKWAY AND GOVERNOR WARFIELD PARKWAY EXCEPT AT POINTS OF ACCESS APPROVED BY THE HOWARD COUNTY PLANNING BOARD.

site analysis:

ZONING: NEW TOWN COMMERCIAL
 AREA OF SITE: 2.566 ACRES OR 110,434 SQ. FT.
 GROSS FLOOR AREA PER BUILDING:
 FIRST FLOOR: 21,700 SQ. FT.
 2ND, 3RD, 4TH FLOORS: 27,500 SQ. FT. / FLOOR = 82,500 SQ. FT.
 TOTAL: 104,200 SQ. FT.
 NET RENTABLE AREA PER BUILDING:
 FIRST FLOOR: 16,000 SQ. FT.
 2ND, 3RD, 4TH FLOORS: 20,000 SQ. FT. / FLOOR = 60,000 SQ. FT.
 TOTAL: 76,000 SQ. FT.
 NUMBER OF EMPLOYEES @ ONE PERSON/100 SQ. FT. = 760
 PARKING REQUIREMENTS:
 2 CARS/100 SQ. FT. OF RENTABLE AREA = 1520 CARS PER BLDG.
 TRYING REQ. FOR BOTH BLDGS. = 1520 X 2 = 3040 CARS
 PARKING SPACES PROVIDED AT SITE NOTED = 446 CARS



APPROVED
 PLANNING BOARD
 OF HOWARD COUNTY
 DATE: OCT 21 1970
 SIGN ADDITION UNTIL: OCT 21 1972



APPROVED
 PLANNING BOARD
 OF HOWARD COUNTY
 DATE: JUL 1 - 1970

APPROVED FOR PUBLIC WATER AND PUBLIC SEWERAGE SYSTEMS, HOWARD COUNTY HEALTH DEPARTMENT
 APPROVED FOR HOWARD COUNTY OFFICE OF PLANNING AND ZONING
 APPROVED FOR PUBLIC WATER, PUBLIC SEWERAGE AND PUBLIC HEALTH DEPARTMENT, HOWARD COUNTY HEALTH DEPARTMENT
 APPROVED FOR PUBLIC WATER, PUBLIC SEWERAGE AND PUBLIC HEALTH DEPARTMENT, HOWARD COUNTY HEALTH DEPARTMENT

SITE PLAN
 SCALE: 1" = 50'-0"

FINAL DEVELOPMENT PLAN: PHASE 4B, PLAT BOOK 16, FOLIO 97
 SUBDIVISION PLAT: PLAT BOOK 17, FOLIO 9
 VILLAGE OF WILDE LAKE
 SECTION 10, AREA 5, PARCELS 1-7
 5TH ELECTION DISTRICT OF HOWARD COUNTY, MD.
 Century Plaza Office Park
 Columbia, Maryland
 Robert Kelley Co. developers
 100 CONNECTICUT AVENUE, N.W. WASHINGTON, D.C. 20004
 JULY 9, 1970. REV. C&E COUNT-ADD NOTES