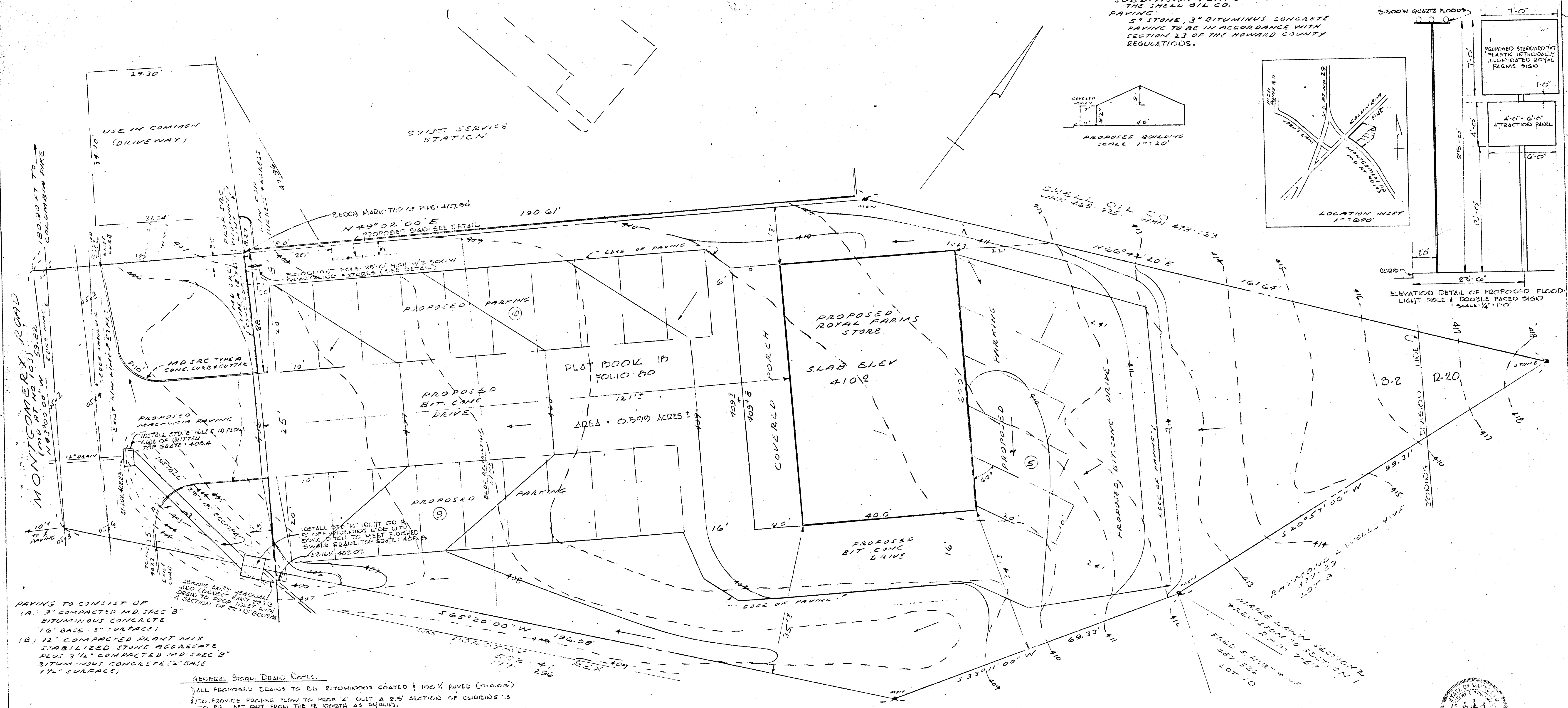
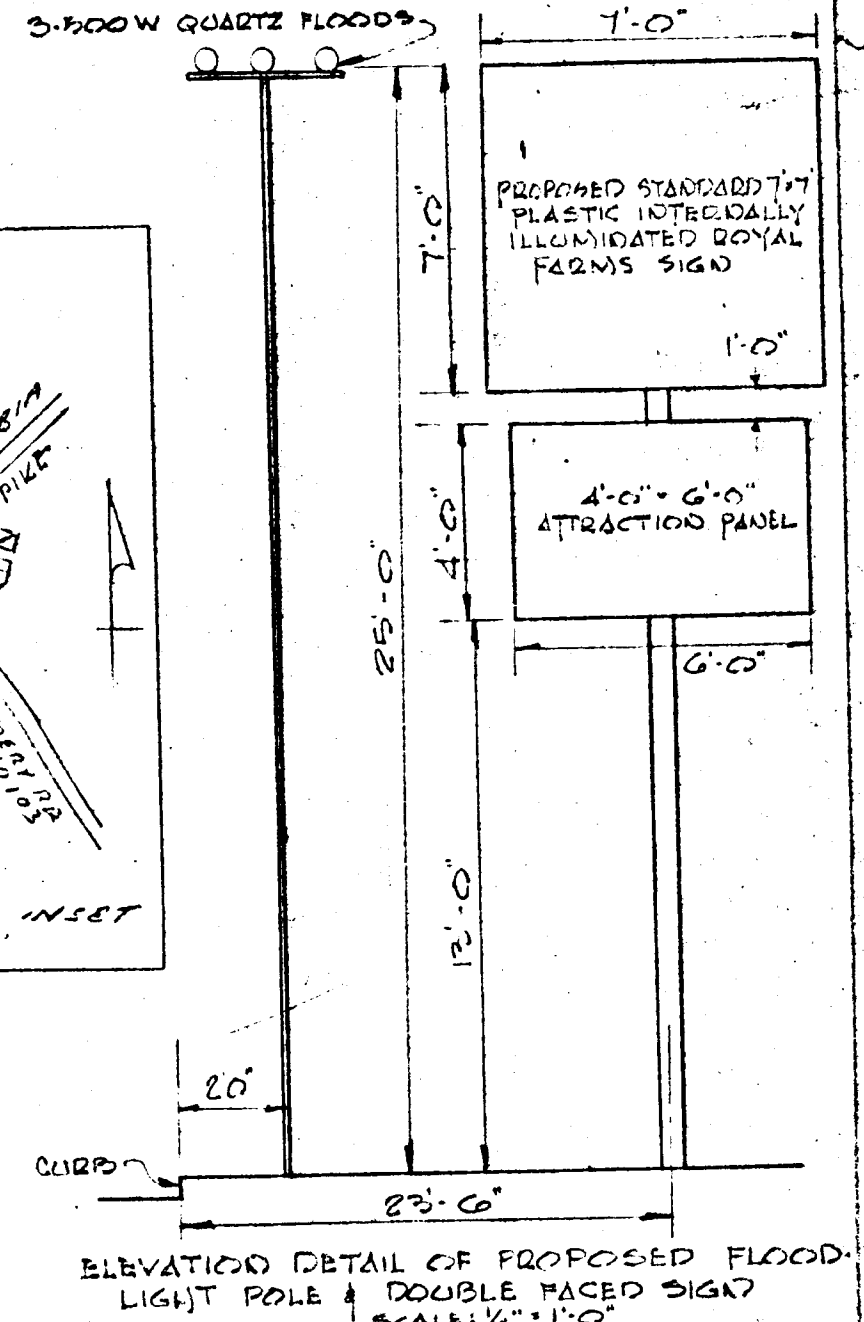
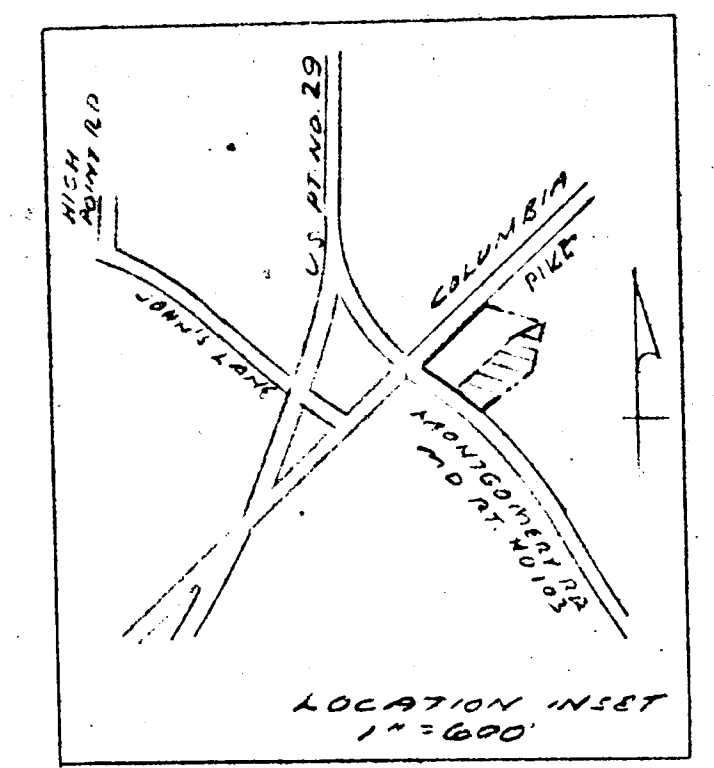
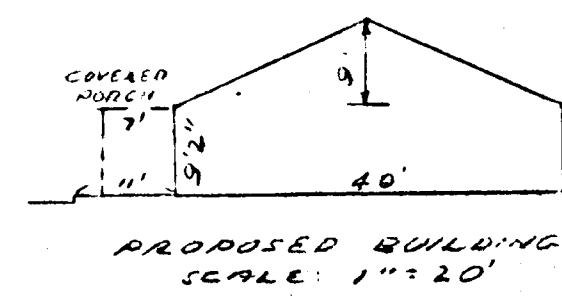


SITE ANALYSIS:
 AREA OF PARCEL: 26,093 SQ. FT. (GROSS); 22,925 SQ. FT. (NET)
 PRESENT ZONING: B-2
 TOTAL NO. OF EMPLOYEES: 2
 TOTAL FLOOR SPACE: 2,400 SQ. FT.
 TOTAL FLOOR SPACE OF SALES AREA: 1,620 SQ. FT. (NO. OF SPACES REQ.: 17)
 SUBDIVISION PLAT OF THE PROPERTY OF THE SHELL OIL CO.
 PAVING:
 5" STONE, 3" BITUMINUS CONCRETE PAVING TO BE IN ACCORDANCE WITH SECTION 23 OF THE HOWARD COUNTY REGULATIONS.



PARKING TO CONSIST OF:
 (A) 9" COMPACTED MD SPEC 'B' BITUMINOUS CONCRETE (16" BASE, 3" SURFACE)
 (B) 12" COMPACTED PLANT MIX STABILIZED STONE AGGREGATE PLUS 3 1/2" COMPACTED MD SPEC 'B' BITUMINOUS CONCRETE (2" BASE, 1 1/2" SURFACE)

ABOVEGROUND DRAIN NOTES:
 1) ALL PROPOSED DRAINS TO BE BITUMINOUS COATED & 100% PAVED (MINIMUM)
 2) TO PROVIDE PROPER FLOW TO PROP. 'W' INLET A 2.5' SECTION OF CURBING IS TO BE LEFT OUT FROM THE 18" WIDTH AS SHOWN.
 3) THE PROP. PIZZ ASSIGNED TO THE DRAIN BETWEEN THE PROP. 'W' & 'E' INLETS IS AS DIRECTED BY THE HOWARD COUNTY DEPARTMENT OF PUBLIC WORKS.

NOTES:
 VERTICAL ACCESS & EGRESS TO MD. DTE #103 IS RESTRICTED EXCEPT AT POINTS OF ACCESS APPROVED BY THE HOWARD COUNTY OFFICE OF PLANNING & ZONING.

SITE PLAN
 CLOVERLAND FARMS DAIRY, INC. PROPERTY
 SUBDIVISION PLAT OF THE PROPERTY OF
 THE SHELL OIL CO.
 2ND DISTRICT
 TAX MAP 24, PARCEL 'B'
 HOWARD CO., MD.

CLOVERLAND FARMS DAIRY, INC.
 220 N. MONROE ST.
 BALTIMORE, MD
 21217
 (OWNER)

JOSEPH A. KUNKEL
 321 BROADMOOR RD.
 BALTIMORE, MD
 21212
 (DEVELOPER)



Robert E. Spellman
 REGISTERED PROFESSIONAL ENGINEER
 LICENSE NO. 7527
 HOWARD COUNTY, MD. 216.20, 1970
 REVISED HOWARD CO. - APR. 17, 1970
 RE-EXAMINED JULY 2, 1970
 (FOR REG. RE-EVAL.)
 JOSEPH D. THOMPSON
 ENGINEERS AND SURVEYORS
 101 SHELL BLDG. 200E JOPPA RD.
 TOWSON, MD. JUNE 13, 1970
 SCALE: 1"=10'