

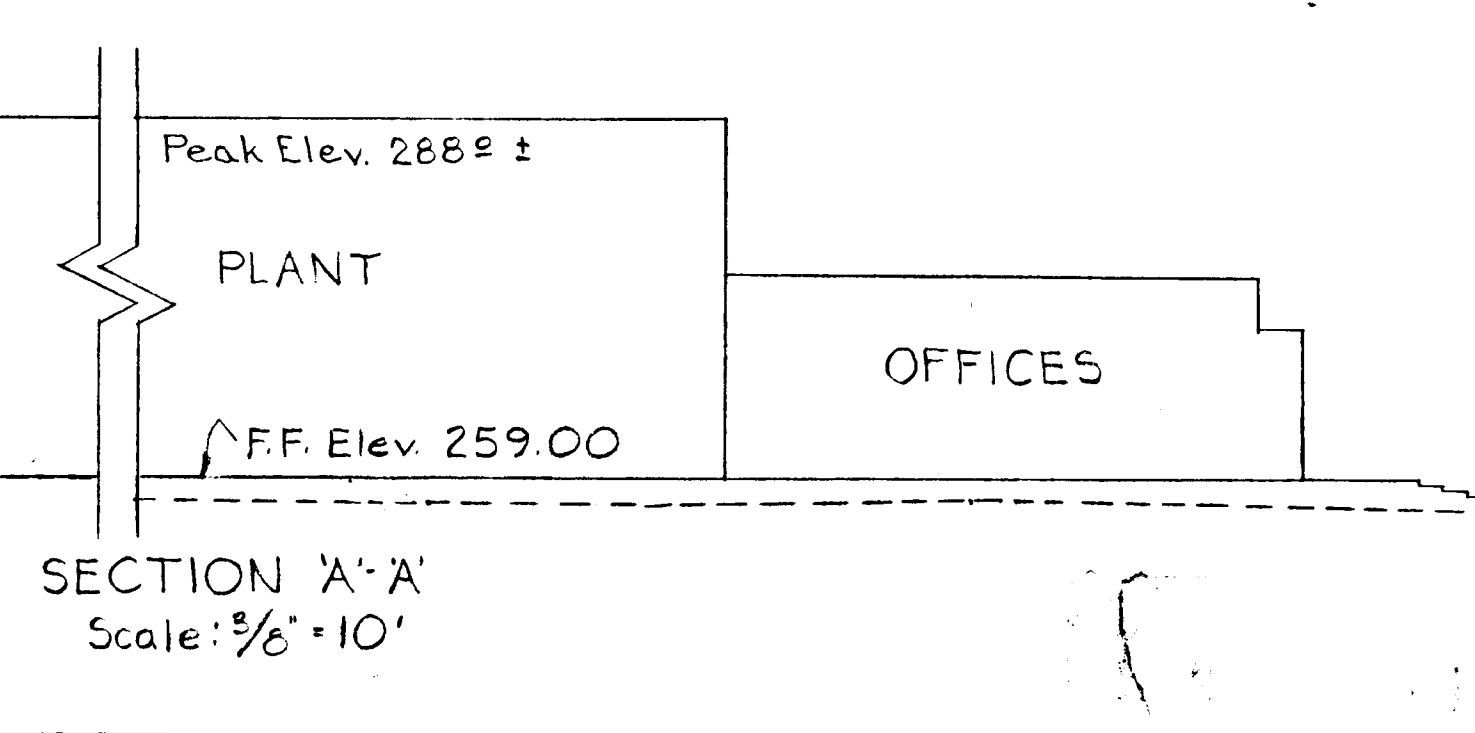
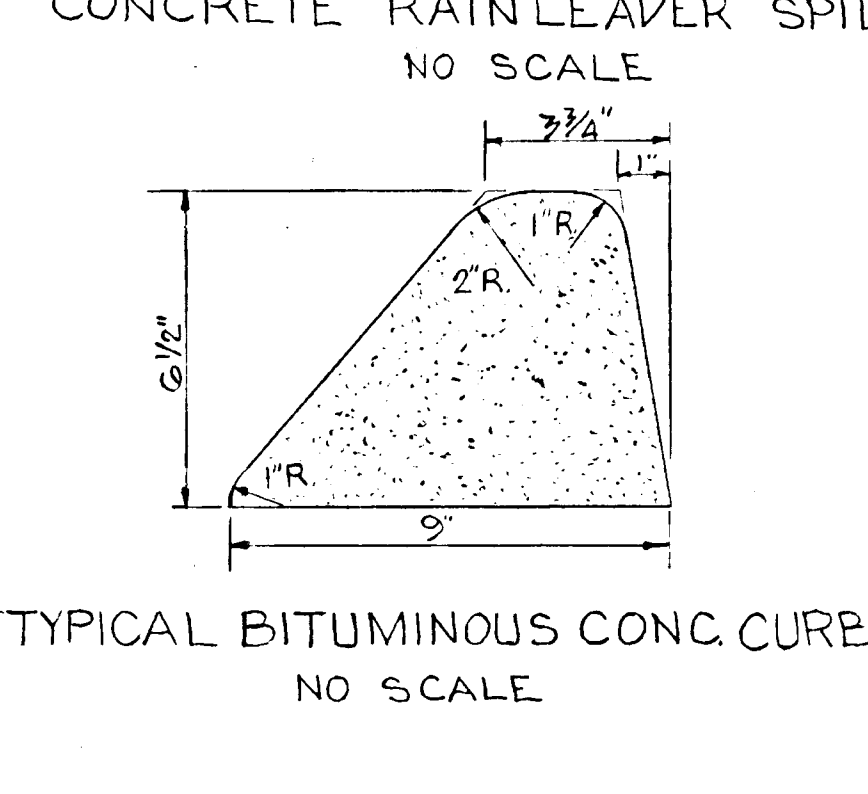
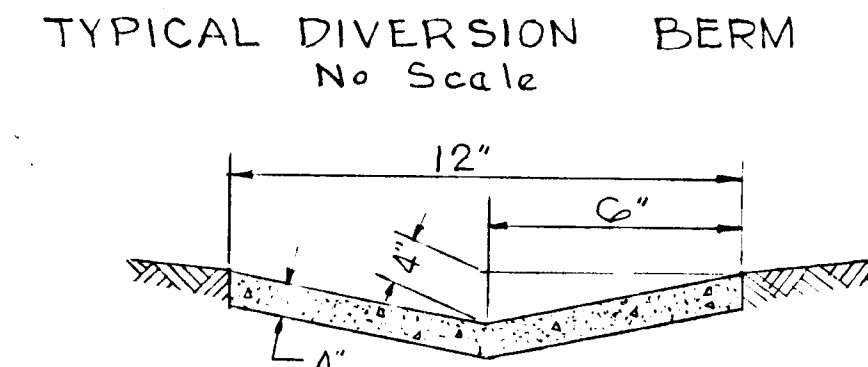
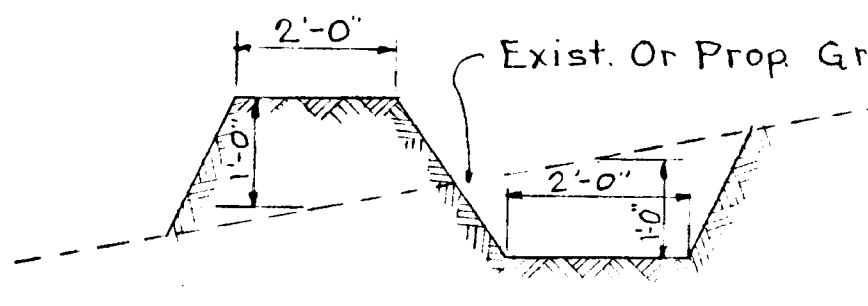
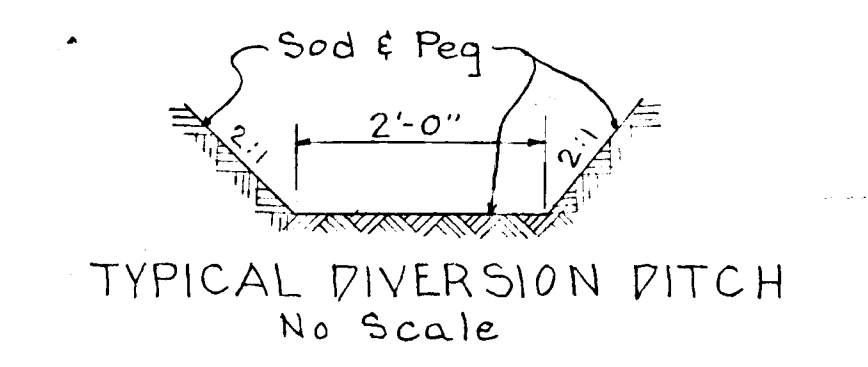
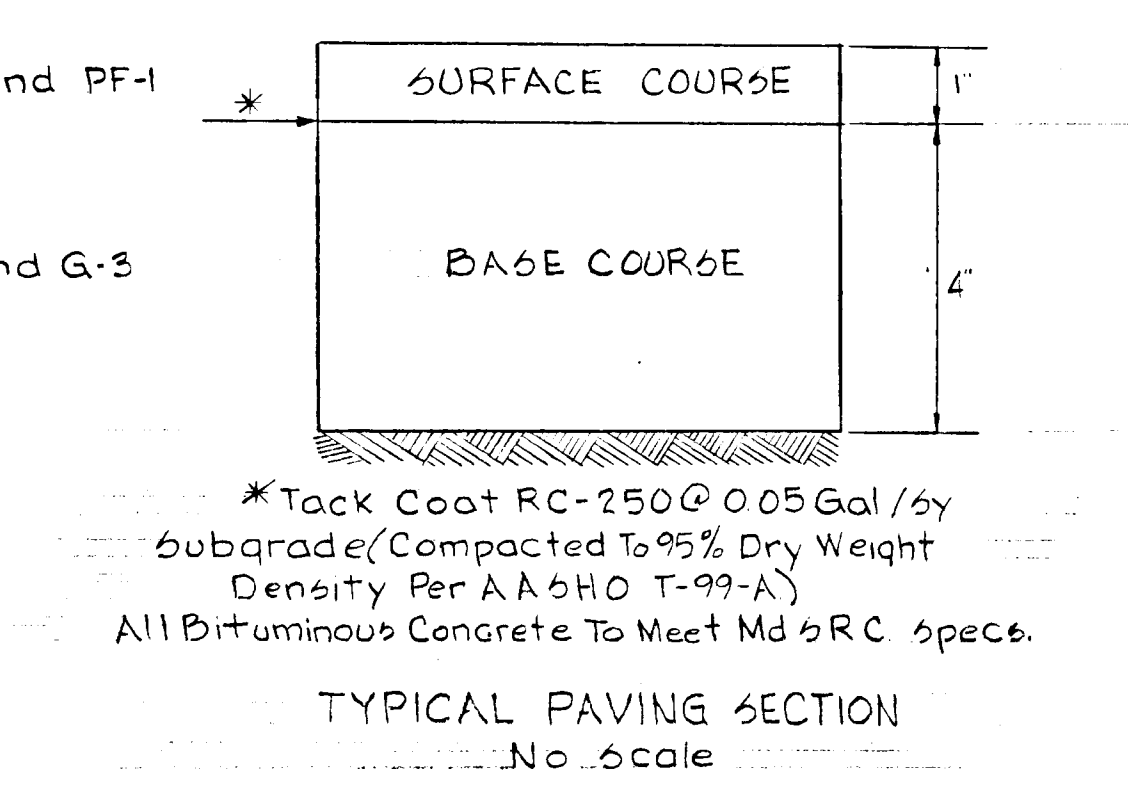
LEGEND
 Original Ground Shown Thus: [Symbol]
 Existing Ground Shown Thus: [Symbol]

OFF-STREET PARKING
 PARKING SPACES REQUIRED:
 150 Employees (U/I) @ 2 Employees Per Space = 75 PS
 PARKING SPACES PROVIDED: (200' Min.)
 Total Employee Spaces Provided = 129 PS
 Total Visitor Spaces Provided = 8 PS
 Total = 177 PS

SITE ANALYSIS
 AREA OF PARCEL = 5.51 Acres
 PRESENT ZONING = M-2
 TOTAL NO OF EMPLOYEES = 150 (U/I)
 TOTAL FLOOR SPACE = 67,125 G Sq Ft (Overall)
 PLAT REFERENCE = PLAT BOOK 17 FOLIO 76

- ① NOTE: Driveway Entrances To Be 7 Reinforced Concrete Per Article C-34 & Curbing In Accordance With D-40 Page 95 Of Howard County Regulations
- ② NOTE: All Areas Not Covered By Building Or Paved Areas To Be Topsoiled, Seeded, And Fertilized.
- ③ NOTE: Diversion Ditches Are To Be Installed Prior To Construction.
- ④ NOTE: For Sign & Wall Details See Architect Plan Sht. A-104.

For Pipe Inverts & Pipe Class See Sheet 2 of 2 Profiles



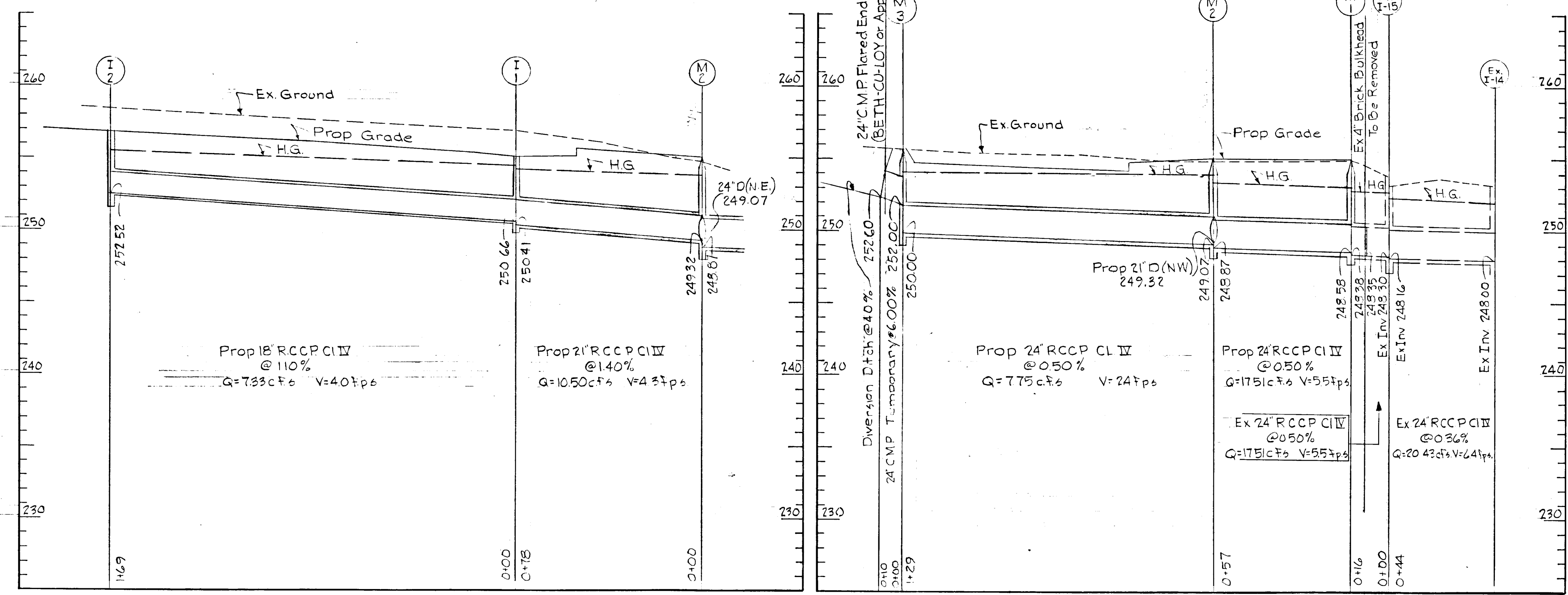
NO	DATE	REVISIONS	BY	CHKD
4	12/10/69	Building Setback & Drainage Ditch	PKC/CFH	
3	12/9/69	NOTE ① Revised NOTE ② & ③ Added	EJS/CFH	
2	11/25/69	Add Note For Flared End Section	EJS/CFH	
1	11/25/69	Change M/I #s To Include M/I (M-2) In Place Of Wye	EJS/CFH	

APPROVED
 DIVISION OF LAND DEVELOPMENT
 OFFICE OF PLANNING AND ZONING
 OF HOWARD COUNTY
 DATE: 12/17/69
 SDP-70-22
 John H. [Signature]
 REG # 44071

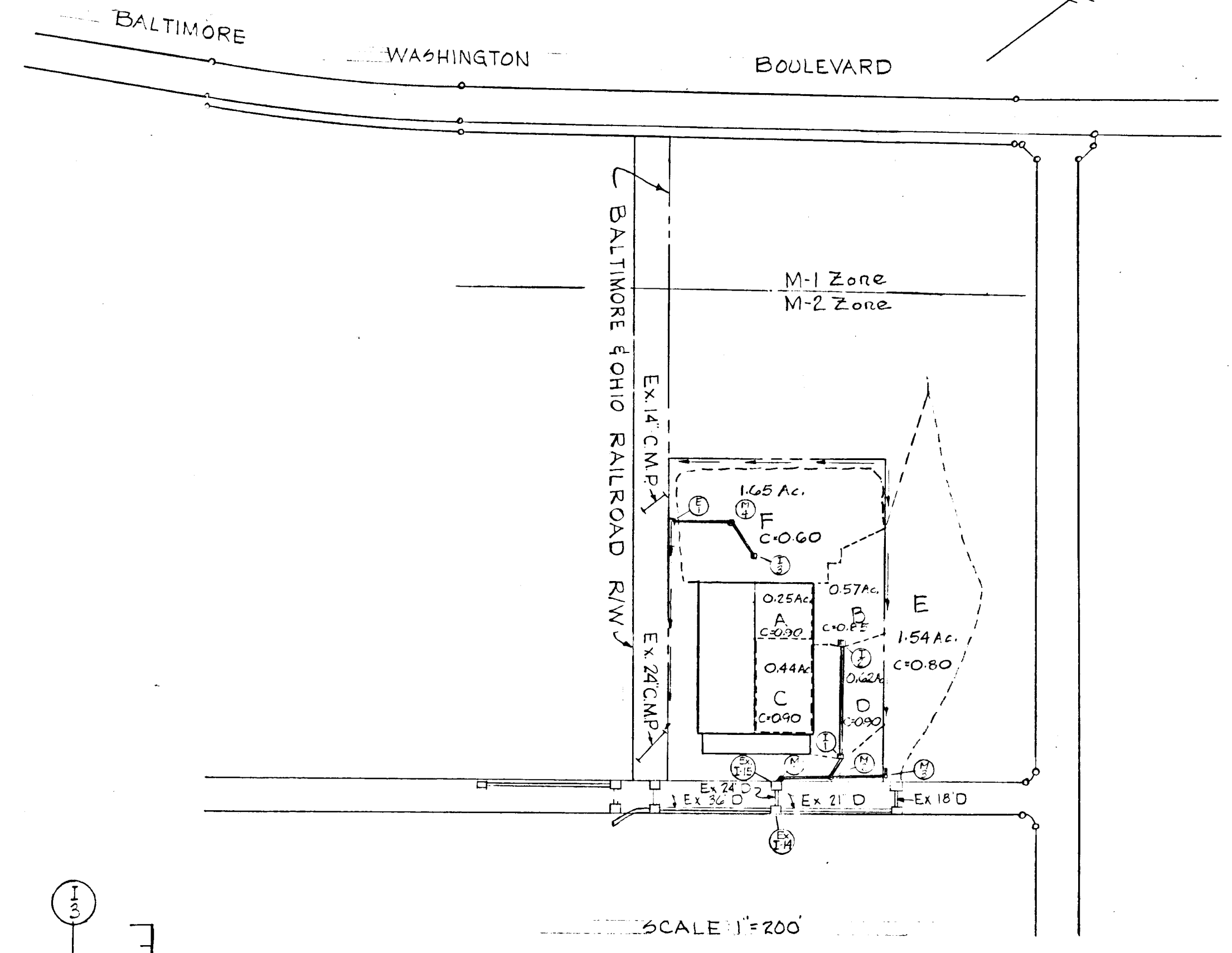
Proposed
PLANT & OFFICE BUILDING FOR D.C.A. FOOD INDUSTRIES, INC.
 BALTIMORE-WASHINGTON IND PARK
 STAYTON DRIVE-PARCEL A-BLOCK A
 HOWARD CO. MD. ELECT. DIST. #6
 OFFICE OF G.W. STEPHENS, JR. & ASSOC.
 CIVIL ENGINEERS
 303 ALLEGHENY AVE.
 TOWSON 4, MD. VA.5-8120
 OWNER & DEVELOPER
 D.C.A. FOOD INDUSTRIES, INC.
 27 FREDERICK ROAD
 ELLICOTT CITY, MD 21043
 ARCHITECT
 DONALD B. RATCLIFFE AIA
 34 W. 25th STREET
 BALTIMORE, MD 21218 HO 7-7556

TITLE
SITE PLAN

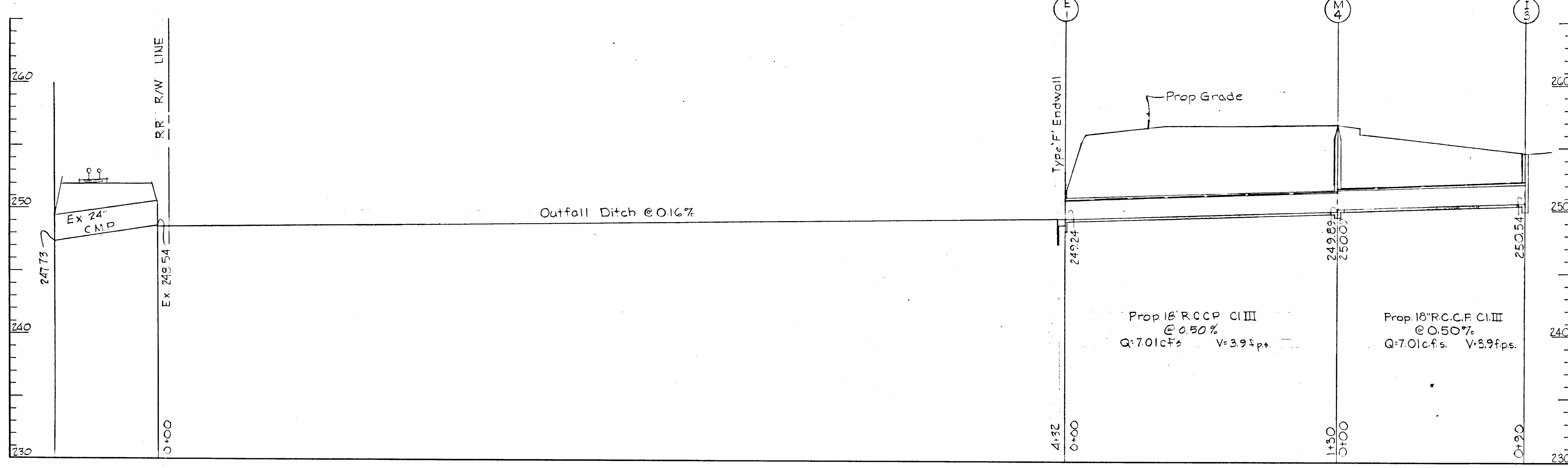
DATE	DRN BY	
11/22/69	EJS	
SCALE	CKD BY	
1"=30'	CFH	



SCALE: Hor. 1"=30'
Vert. 1"=5'



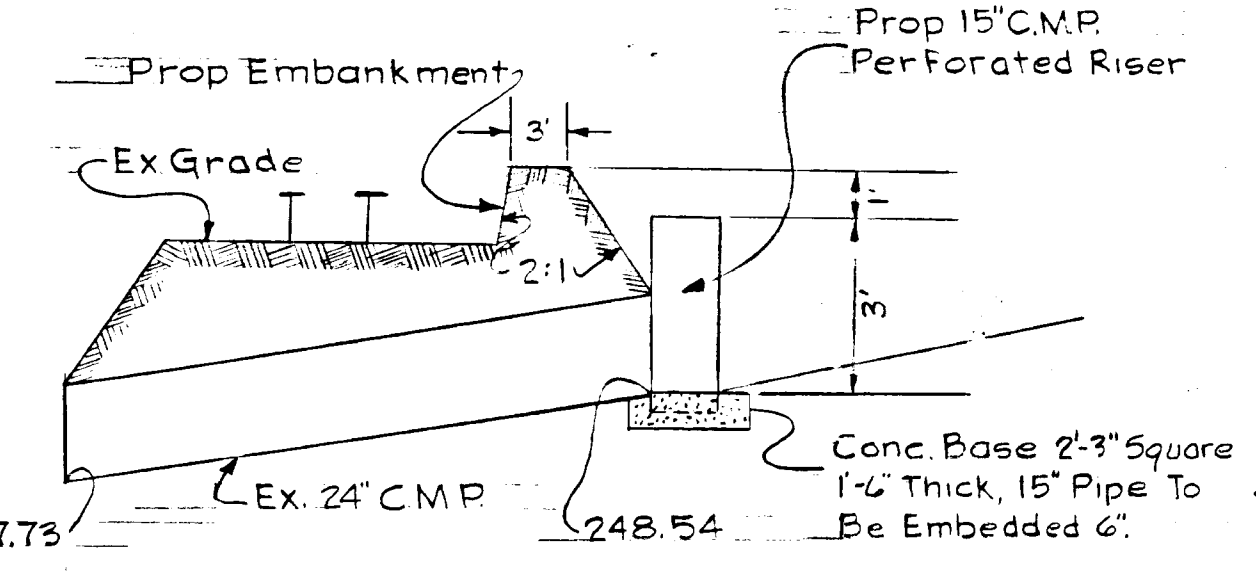
SCALE 1"=200'



SCALE: Hor. 1"=30'
Vert. 1"=5'

DRAINAGE COMPUTATIONS													
Area No	Remarks	Inlet Acres	Total Acres	C	C+A	Accum C+A	Time Concn	I In/Hr	Q cfs	Pipe Size	Slope %	Vel.	Time In Pipe
A	I-1	0.25	0.25	390	0.25	0.25	5.0	0.0	1.0	18"	0.25	4.0	0.7
B	ROOF	0.24	0.49	380	0.49	0.49	6.0	0.0	1.7	18"	0.25	4.0	0.7
A+C	I-2 To I-1	0.49	0.98	380	0.98	1.11	6.0	0.0	3.7	18"	0.25	4.0	0.7
D	I-1	0.42	0.90	380	0.90	1.14	6.0	0.0	3.8	18"	0.25	4.0	0.7
B+C	I-1 To M-2	1.64	1.64	380	1.64	1.64	6.0	0.0	7.5	24"	0.25	4.0	0.9
E	Off-site To M-2	1.54	1.54	380	1.54	1.54	7.0	0.0	7.5	24"	0.25	4.0	0.9
A+E	M-2 To Ex I-15	3.42	3.42	380	3.42	3.42	7.0	0.0	15.0	24"	0.25	4.0	1.0
Ex-O	Ex I-15	0.00	0.00	380	0.00	0.00	6.0	0.0	0.0	18"	0.25	4.0	0.7
F-O	Ex I-15 To Ex I-14	4.00	4.00	380	4.00	4.00	6.0	0.0	24.0	36"	0.25	4.0	1.0
F	I-2 To E-1	1.65	1.65	380	1.65	1.65	6.5	7.1	7.0	18"	0.25	4.0	1.0

* Sump (20 Yr Storm Freq)



SECTION THRU PROP TEMPORARY RISER-BARREL EROSION CONTROL DEVICE
NO SCALE

Notes: 1. Riser To Be Fully Perforated Top To Bottom (1/4" Holes)
2. Connection Of 15" Riser To 24" Barrel To Be Watertight.

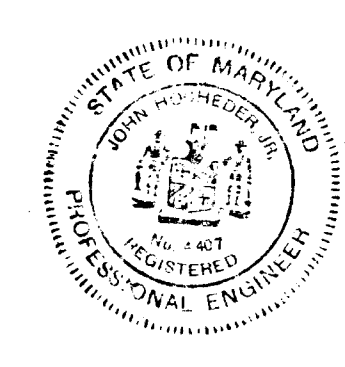
MANHOLE SCHEDULE				
No	Type	Size	In/Out	Top Elev
M-1	Sta.	24"	248.38	255.0
M-2	"	"	248.67	255.1
M-3	"	24"	255.00	255.2
M-4	"	18"	249.69	256.8

INLET SCHEDULE				
No	Type	Q	In/Out	Top Elev
I-1	'E' Grate	3.50	250.41	254.95
I-2	'E' Grate	1.56	252.52	256.77
I-3	Dbl.'E' Grate	7.01	250.54	254.50

STRUCTURE SCHEDULE				
No	Type	Size	In/Out	Top Wall
E-1	'F' Conc. End.	18"	242.24	251.49

APPROVED FOR PUBLIC WATER & PUBLIC SEWERAGE SYSTEMS, HOWARD CO. HEALTH DEPARTMENT
[Signature] DATE 12-11-69
 APPROVED HOWARD COUNTY OFFICE OF PLANNING & ZONING
[Signature] DATE 12-11-69
 APPROVED FOR PUBLIC WATER, PUBLIC SEWERAGE AND STORM DRAINAGE SYSTEMS AND ROADS
 HOWARD COUNTY DEPARTMENT OF PUBLIC WORKS
[Signature] DATE 12-11-69
 APPROVED
 DIVISION OF LAND DEVELOPMENT
 OFFICE OF PLANNING AND ZONING
 OF HOWARD COUNTY
 DATE 12/17/69

PLANT & OFFICE BUILDING FOR
 DCA FOOD INDUSTRIES INC.
 BALTIMORE-WASHINGTON IND PARK
 STAYTON DRIVE-PARCEL A-BLOCK A
 HOWARD CO. MD ELECT DIST #6
 OFFICE OF
 G.W. STEPHENS JR & ASSOC.
 CIVIL ENGINEERS
 308 ALLEGHENY AVE
 TOWSON 4 MD VAS-8120
 OWNER & DEVELOPER:
 DCA FOOD INDUSTRIES INC.
 27 FREDERICK ROAD
 ELLICOTT CITY MD 21043
 ARCHITECT
 DONALD B. BRATCLIFFE AIA
 34 W 25th STREET
 BALTIMORE, MD 21218 HO 7-7554



[Signature]
 REG # 4407

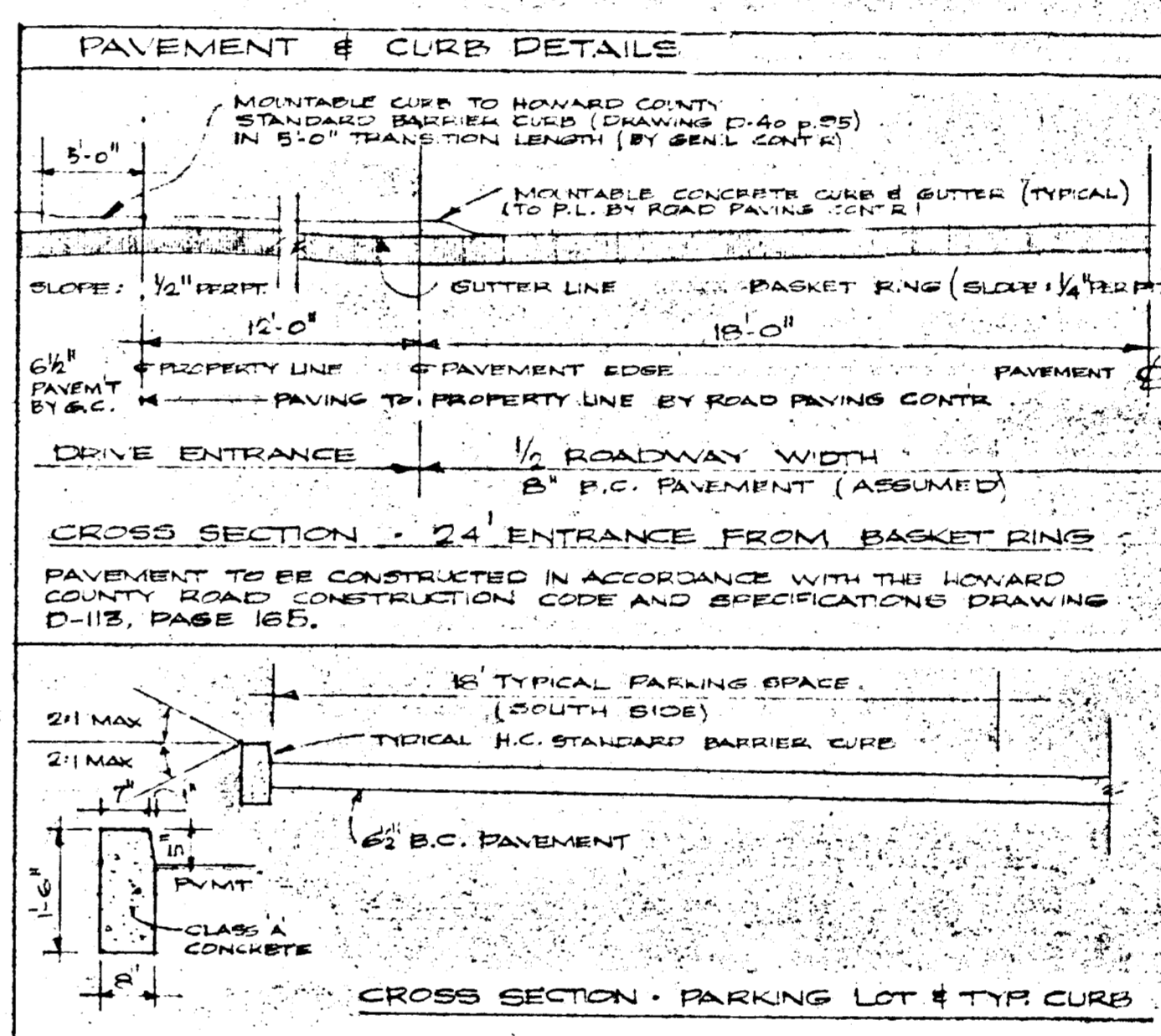
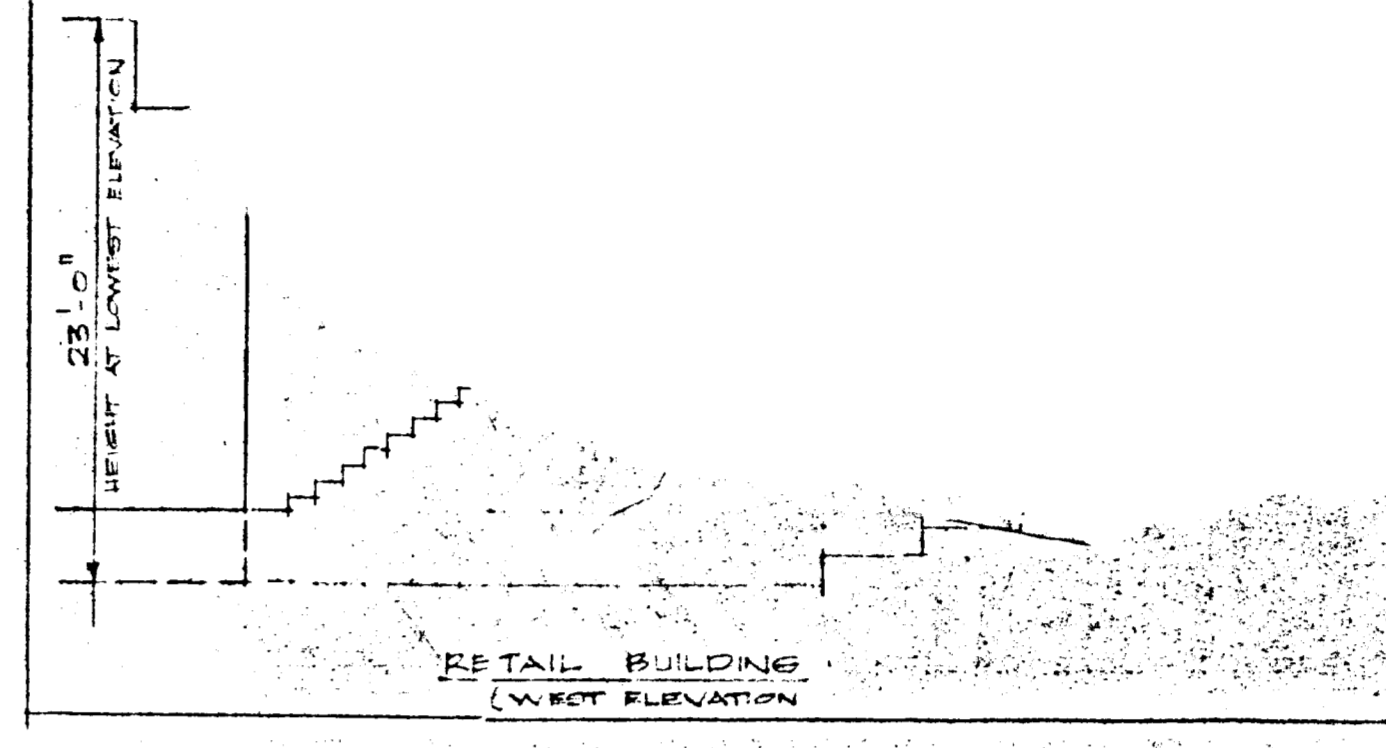
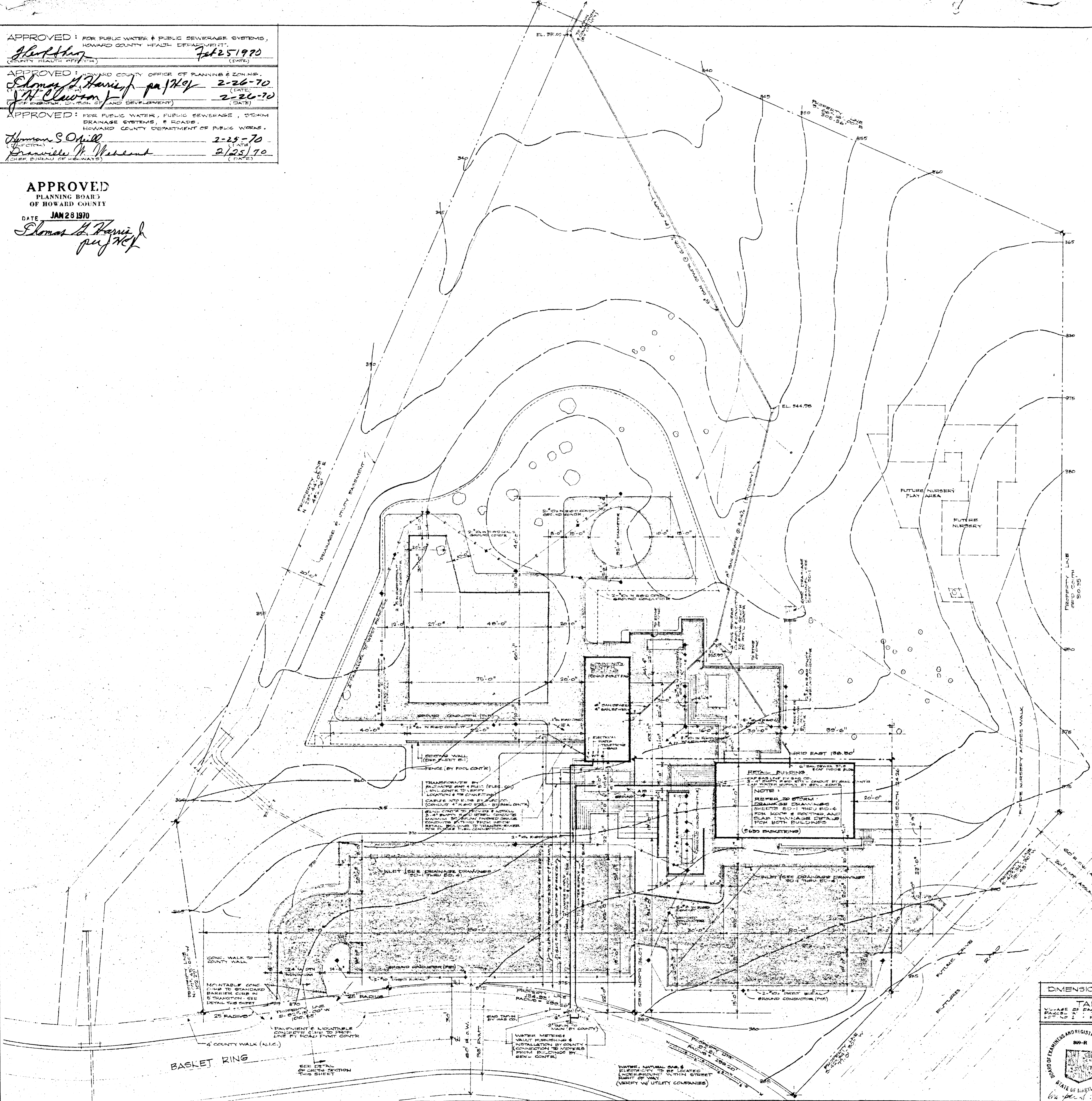
TITLE DRAINAGE AREA MAP DRAINAGE COMPUTATIONS AND PROFILE		
DATE Nov 22 1969	DRN BY PEK	SHEET NO 2 OF 2
SCALE CKD BY AS SHOWN	CFH	

APPROVED: FOR PUBLIC WATER & PUBLIC SEWERAGE SYSTEMS,
HOWARD COUNTY HEALTH DEPARTMENT
Handwritten signature 7/25/70
(DATE)

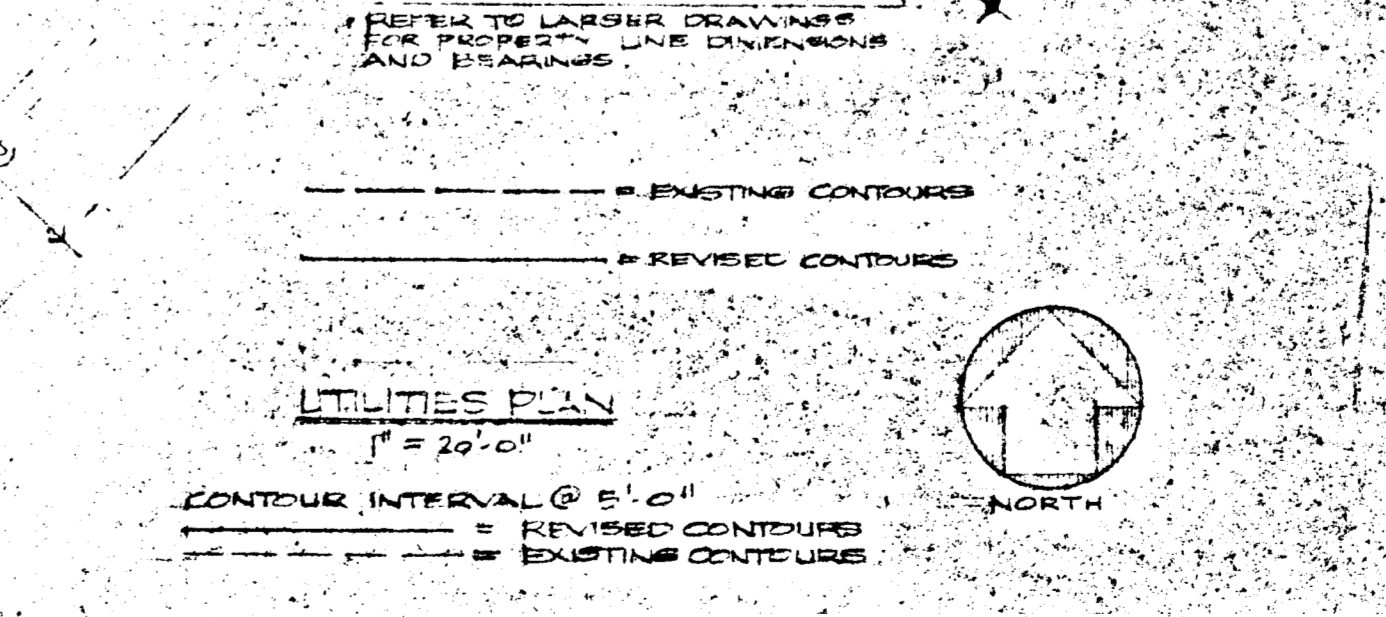
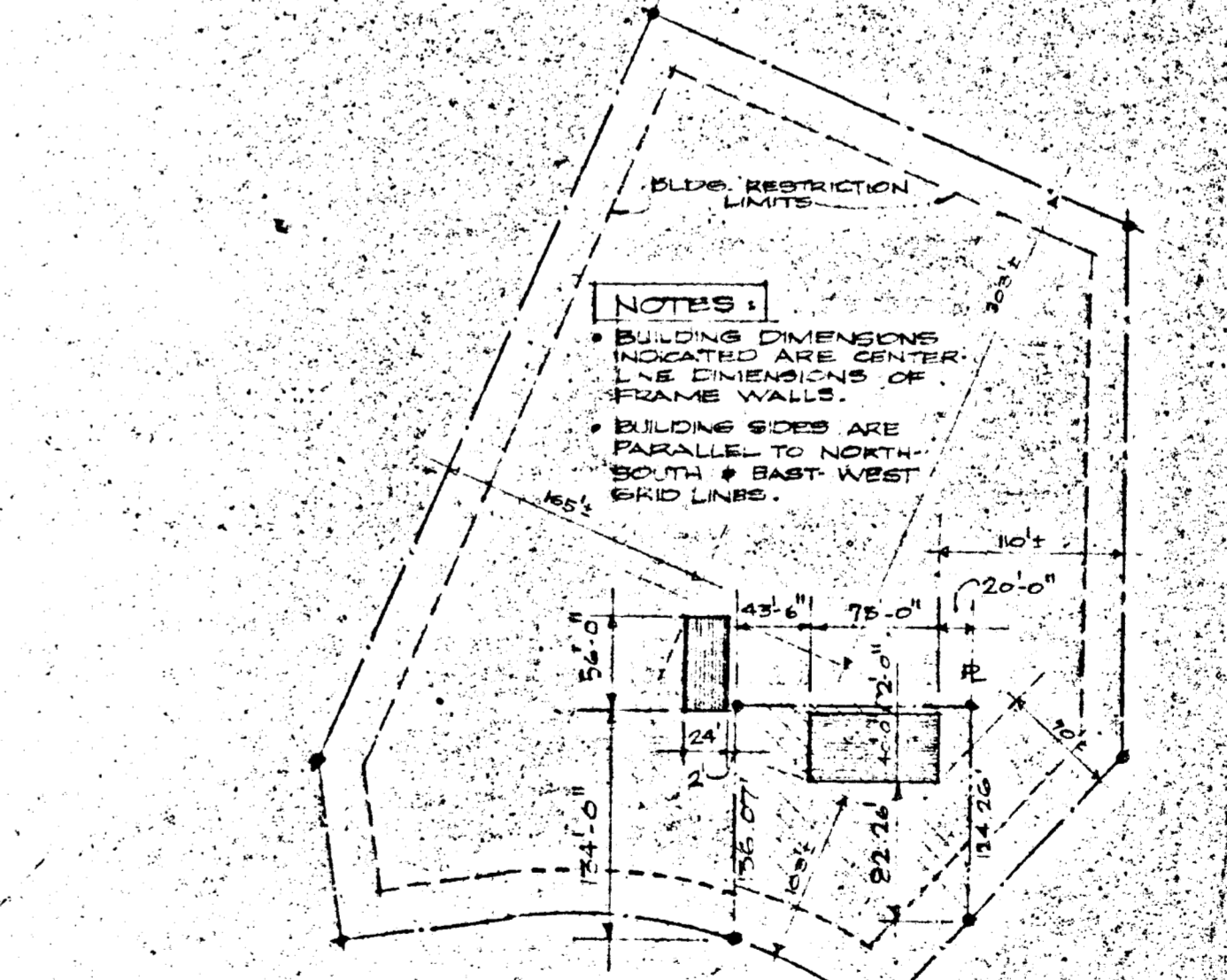
APPROVED: HOWARD COUNTY OFFICE OF PLANNING & ZONING
Edmond H. Harris 2-26-70
J. H. Newton 2-26-70
(DATE)

APPROVED: FOR PUBLIC WATER, PUBLIC SEWERAGE, STEAM
DRAINAGE SYSTEMS, & ROADS.
HOWARD COUNTY DEPARTMENT OF PUBLIC WORKS
Thomson S. O'Neill 2-25-70
Drumville H. Woodard 2/25/70
(DATE)

APPROVED
PLANNING BOARD
OF HOWARD COUNTY
DATE JAN 28 1970
Edmond H. Harris
per JKH



- NOTES:
- DIRECT BURIAL CABLE TO BE TYPE UF, 3/4\"/>



DIMENSIONED SITE & UTILITIES PLAN

TALBOTT SPRINGS NEIGHBORHOOD CENTER
 220 KING ST. ALEXANDRIA, VA. • TEL. 6-
 800-R

NEER & GRAEF ARCHITECTS
 220 KING ST. ALEXANDRIA, VA. • TEL. 6-
 800-R

COMMISSIONED BY
 DATE 1-1-70
 REVISION
 REVISED