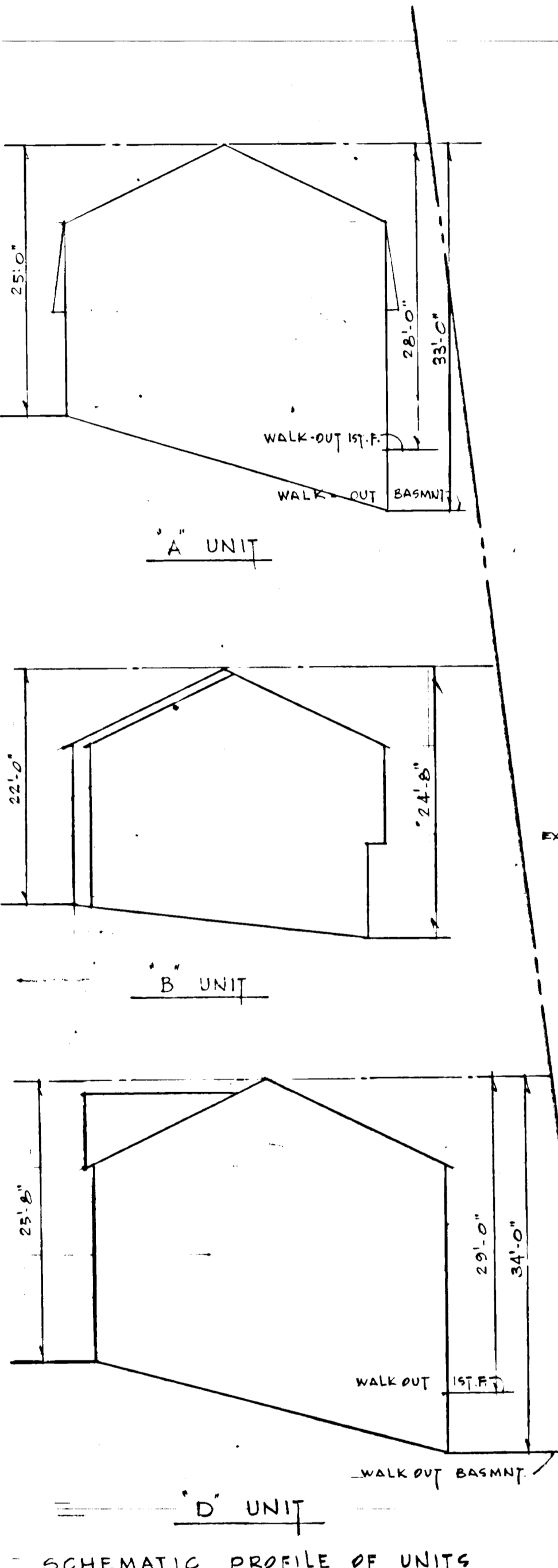
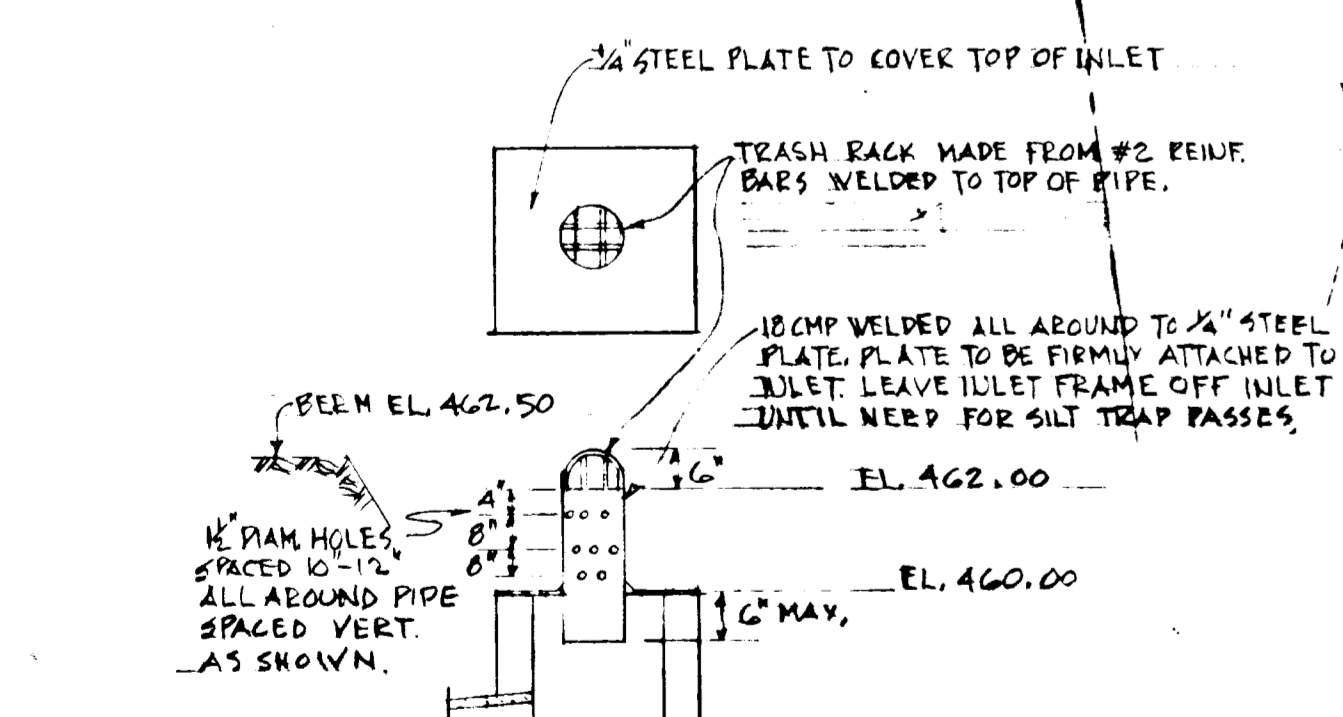


VICINITY MAP
SCALE: 1"=1200'

ELEVATION
FENCE DETAILS



SCHEMATIC PROFILE OF UNITS



MODIFICATIONS TO INLET #3
FOR SILT TRAP
NO SCALE

EROSION CONTROL NOTES

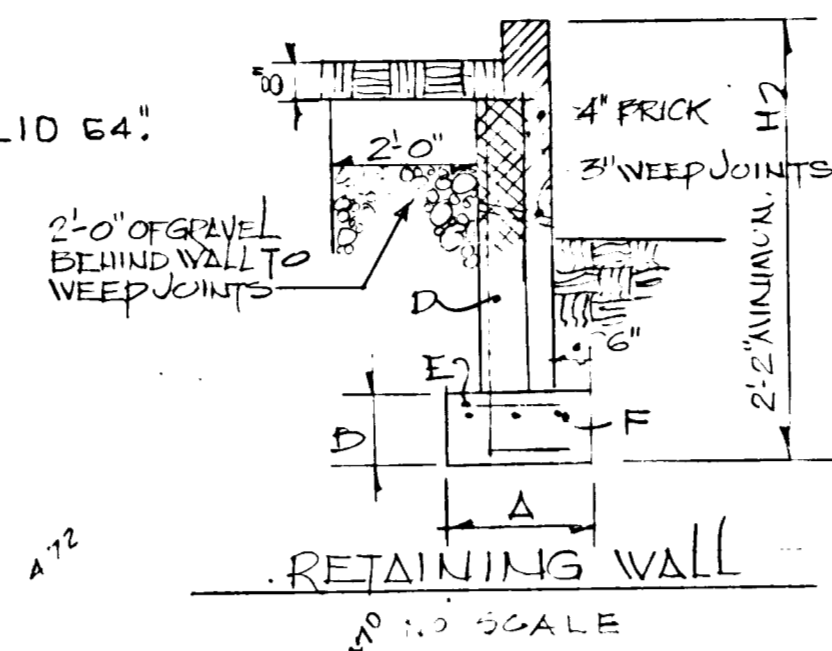
MODEL UNITS IN BLOCK NO. 4 WILL BE CONSTRUCTED FIRST ALONG WITH STREET IN FRONT OF BLOCK. INLET #4 PIPE TO I-3 WITH MODIFICATIONS SHOWN HEREON WILL BE BUILT WITH THE MODEL UNITS, IN ADVANCE OF GENERAL GRADING AREAS DISTURBED BY THIS INITIAL CONSTRUCTION WILL BE COVERED WITH A TRAILER STEAM MULCH UNTIL SO D IS PLACED.
AREAS DRAINING TOWARD ADJACENT PROPERTIES WILL BE SODDED AS SOON AS FINISH GRADING IS DONE.
ALL AREAS ON-SITE WILL RECEIVE SOD ON COMPLETION OF GRADING.
SEE STORM DRAINAGE PLANS FOR ADDITIONAL DETAILS.

- NOTES:**
1. FOR DIMENSIONS OF LOTS, EASEMENTS, RIGHTS-OF-WAY, ETC.; SEE PLOT PLAN THIS SHEET.
 2. ALL ON-SITE EROSION & PARKING AREAS ARE DEDICATED TO THE COUNTY.
 3. ACCESS WALKS & SIDEWALKS SHALL CONFORM TO HOWARD COUNTY STD. BY PAGE 69.
 4. PUBLIC SEWER & WATER AVAILABLE WITHIN THIS SUBDIVISION.
 5. SEE EROSION CONTROL DATA ON THIS SHEET.

SITE ANALYSIS

TOTAL AREA OF SITE = 6.051 ACRES
TOTAL NUMBER OF UNITS = 60
TOTAL NUMBER OF PARKING SPACES:
REQUIRED = 120
PROVIDED = 120
RECORD PLAT RECORDED IN PLAT BOOK 17-AT FOLIO 64.
FINAL DEVELOPMENT PLAN PHASE 3A RECORDED IN PLAT BOOK 14-AT FOLIO 63.

MARK	H	A	D	C	D	E	F	REMARKS
I	2.0	2.0	1.0	2"	-	-	-	SOLID C.M.U.
II	3.0	2.2	1.0	2"	2"	2"	2"	SOLID C.M.U.
III	4.0	2.9	1.0	2"	2"	2"	2"	SOLID C.M.U.



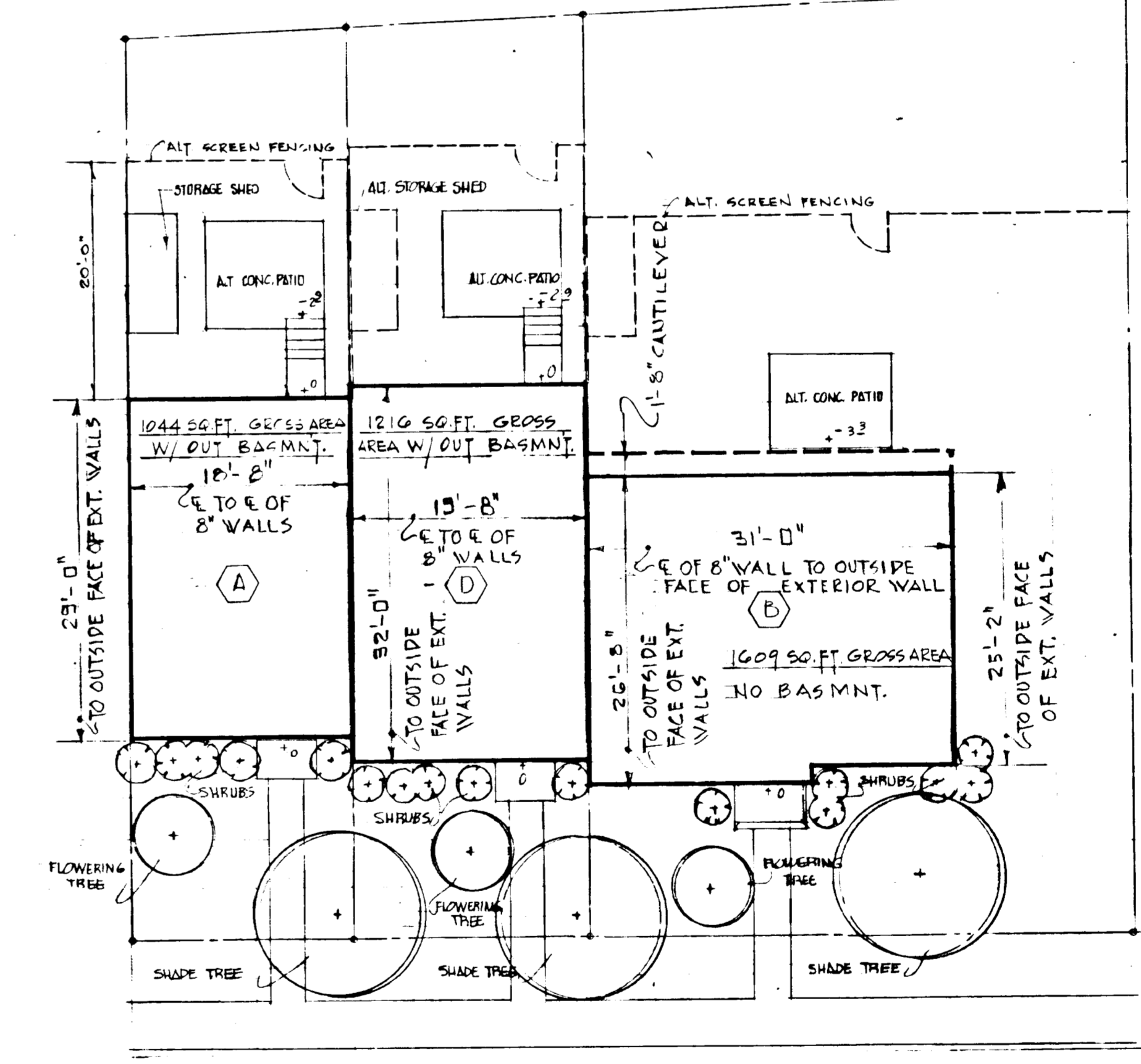
RETAINING WALL



MILITARY ROUTE (PROPOSED)



LOT #1
PLOT PLAN
SCALE: 1"=500'



TYPICAL PLOT PLAN @ DIMENSIONS OF UNITS & AREAS
SCALE: 1"=10'

APPROVED: For Public Water and Public Sewerage Systems, Howard County Health Department
[Signature] 9-26-69
Date

APPROVED: Howard County Office of Planning and Zoning
[Signature] 9-26-69
Date

APPROVED: For Public Water, Public Sewerage and Storm Drainage Systems and Roads
[Signature] 9-26-69
Date

APPROVED: For Public Water and Public Sewerage Systems, Howard County Health Department
[Signature] 9-26-69
Date

THIS DEVELOPMENT PLAN IS APPROVED FOR SOIL EROSION AND SEDIMENT CONTROL BY THE HOWARD SOIL CONSERVATION DISTRICT
Reviewed: *[Signature]* Date 9-23-69
Dist. Conservationist
Approved: *[Signature]* Date 9-24-69
Howard S. D.

[Signature]

VILLAGE OF HARPER'S CHOICE

SECTION 3 - AREA 4 - LOT 2
5TH ELECTION DISTRICT-HOWARD COUNTY, MD.
HARPERS VILLAGE TOWNHOUSES

REVISED	DATE	BY	REASON
MAY 2, 1969			
MAY 20, 1969			
SEP. 17, 1969			

ARTERY ENTERPRISES INC.
10400 CONNECTICUT AVE.
KENSINGTON, MD.