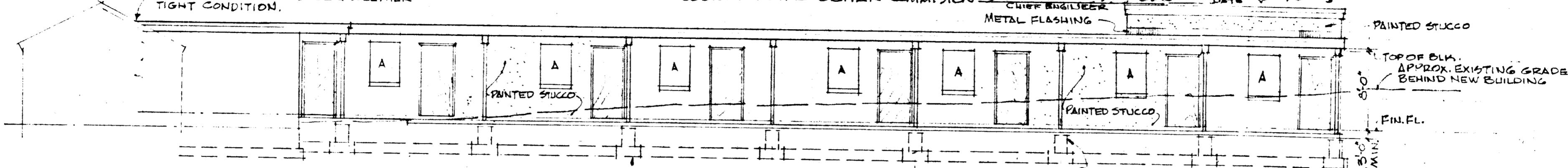


PLANNING DIRECTOR
 HOWARD COUNTY PLANNING COMMISSION
 HOWARD COUNTY ROAD DEPT
 HOWARD COUNTY METROPOLITAN COMMISSION

James J. Herring 6-26-68
J. R. Clauson 6/27/68
 SENIOR ENGINEER
 ROAD ENGINEER
 CHIEF ENGINEER

HOWARD COUNTY HEALTH COMMISSION
 HEALTH OFFICER
 DATE 12/19/68

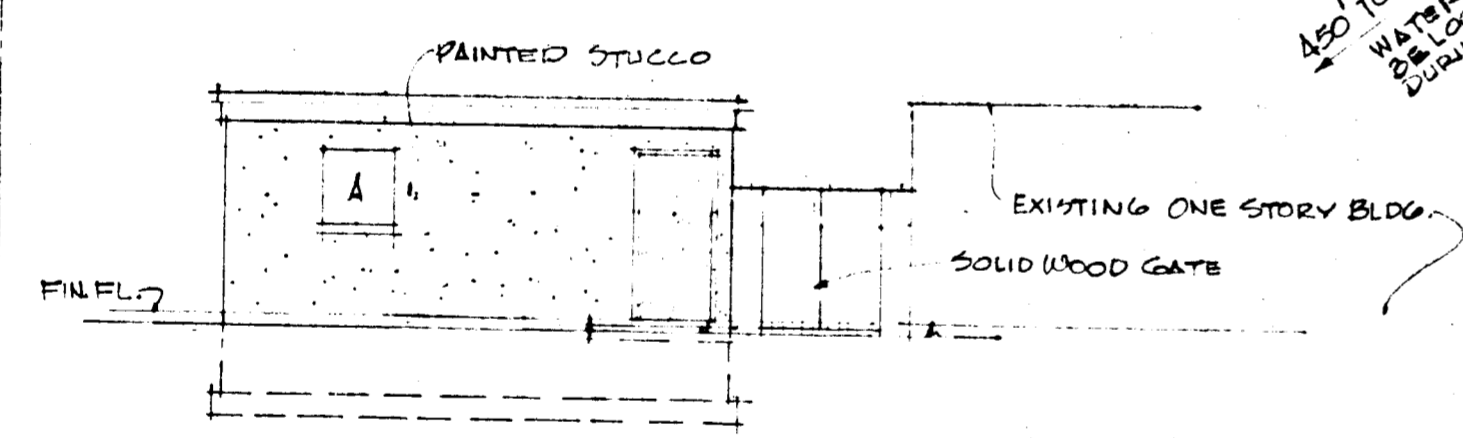
FRAME NEW ROOF INTO EXISTING ROOF.
 PATCH AND FLASH WITH METAL FLASHING
 AS REQUIRED TO PRODUCE A WEATHER
 TIGHT CONDITION.



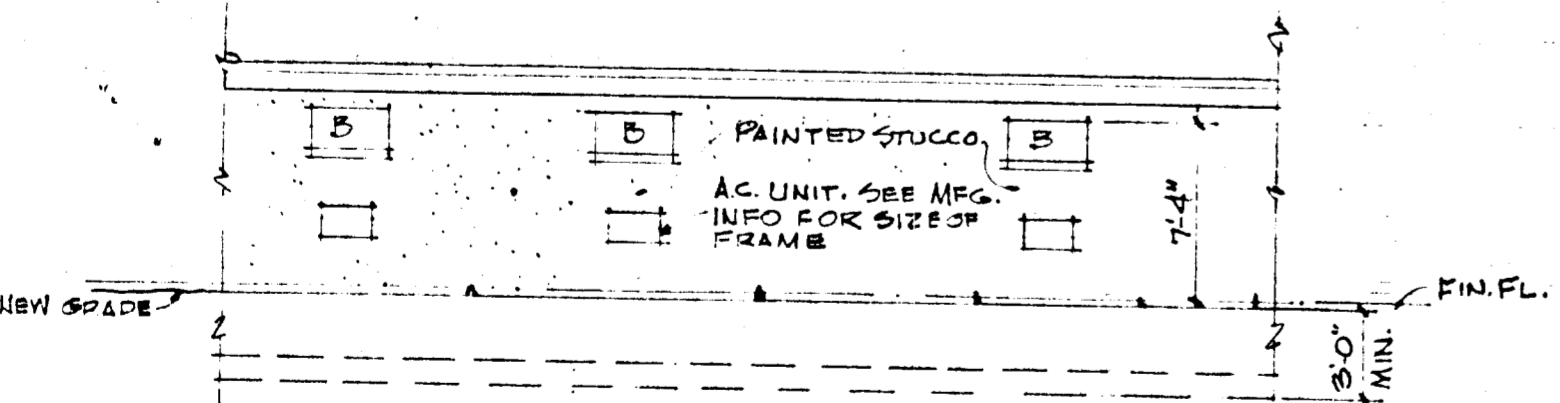
WEST ELEVATION
 1/8" = 1'-0"



SOUTH ELEVATION
 1/8" = 1'-0"

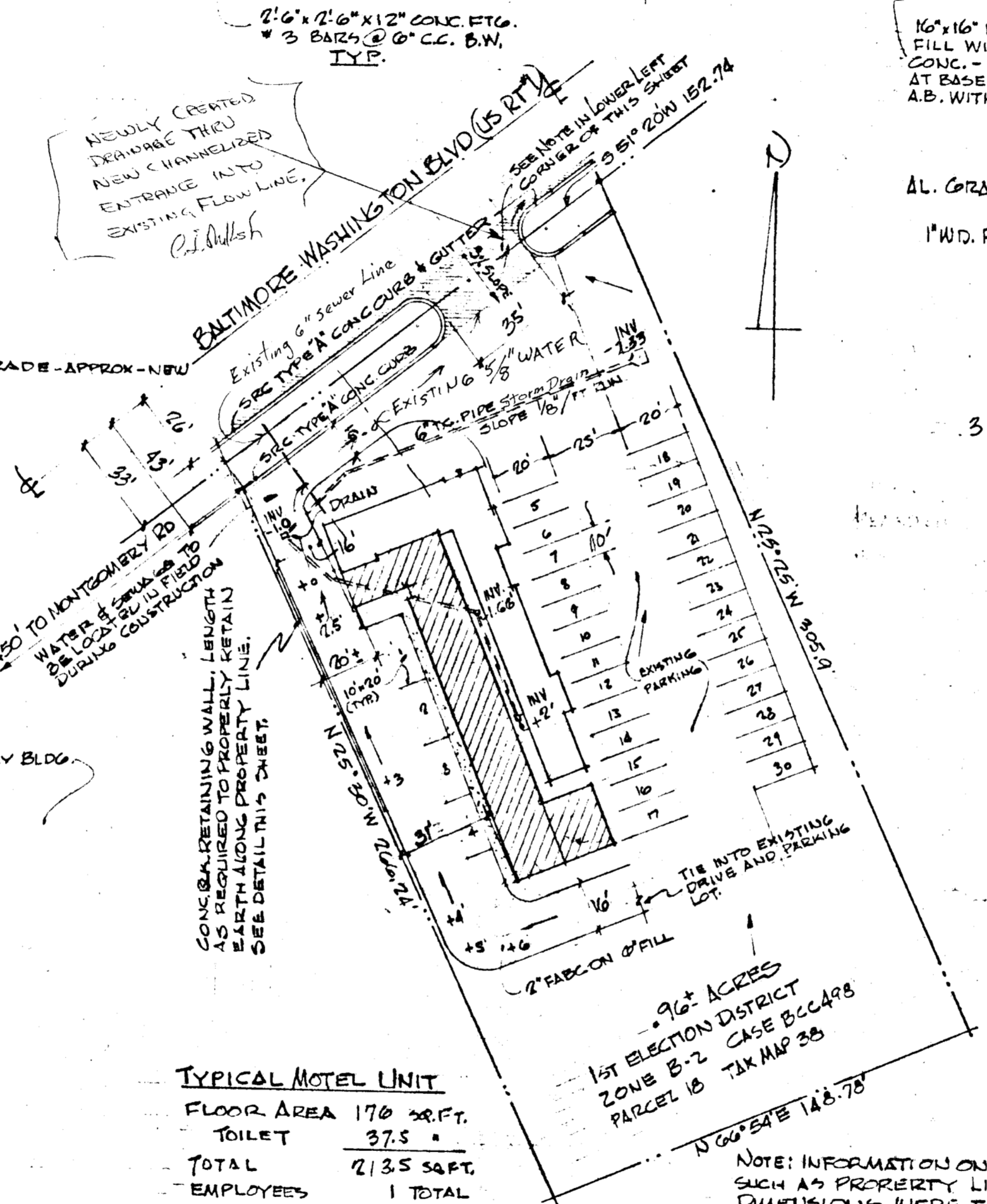


EAST ELEVATION
 1/8" = 1'-0"



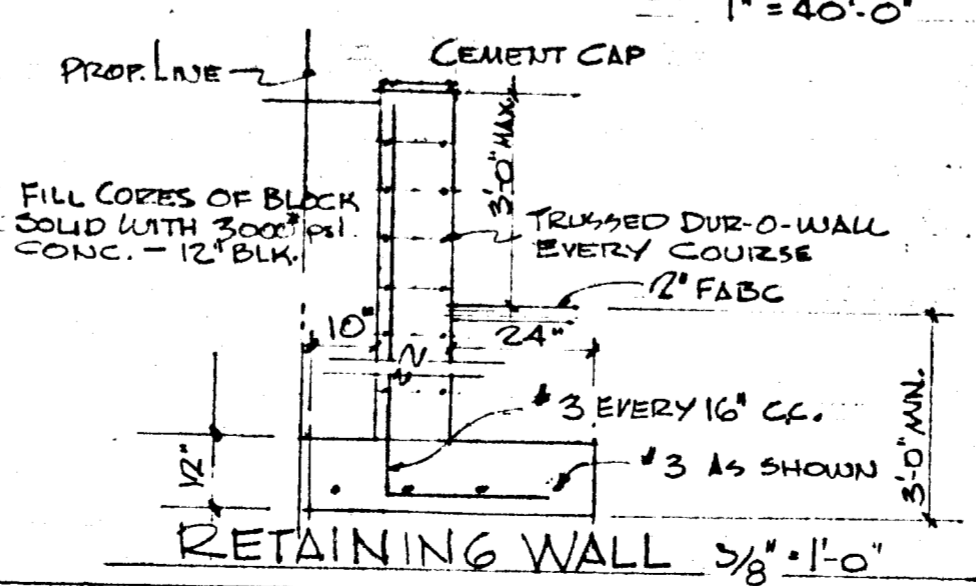
PARTIAL EAST ELEVATION BEHIND EXISTING BLDG
 1/8" = 1'-0"

NOTE - SEE SITE PLAN THIS SHEET.
 PAVING TO CONSIST OF:
 a. 9" COMPACT MD, SPEC "B" BITUMINOUS CONCRETE
 (6" BASE 3" SURFACE)
 b. 12" COMPACT PLANT MIX STABILIZED STONE AGGREGATE
 PLUS 3% COMPACTED MD, SPEC "B" BITUMINOUS CONCRETE
 (2" BASE - 1/2" SURFACE)

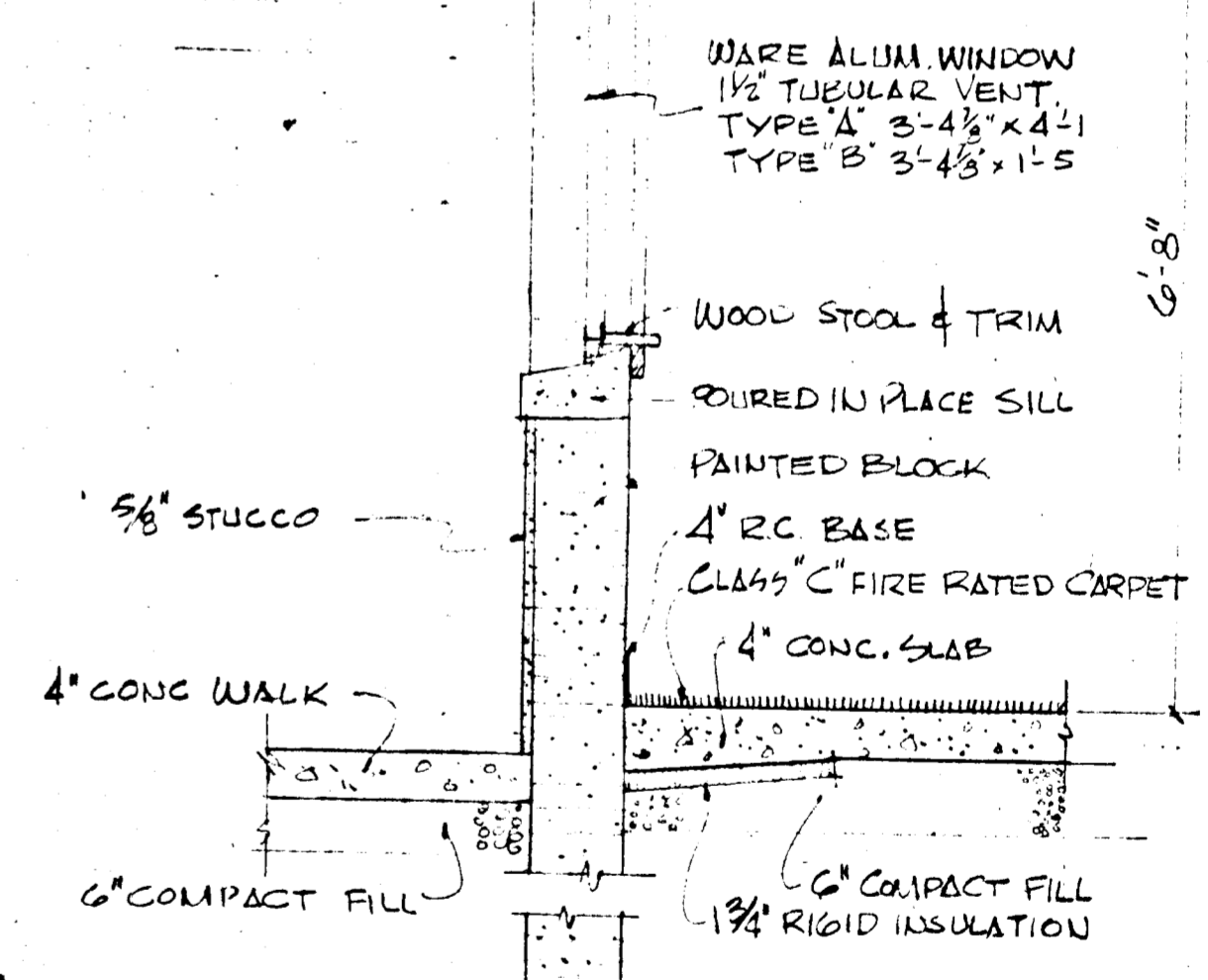
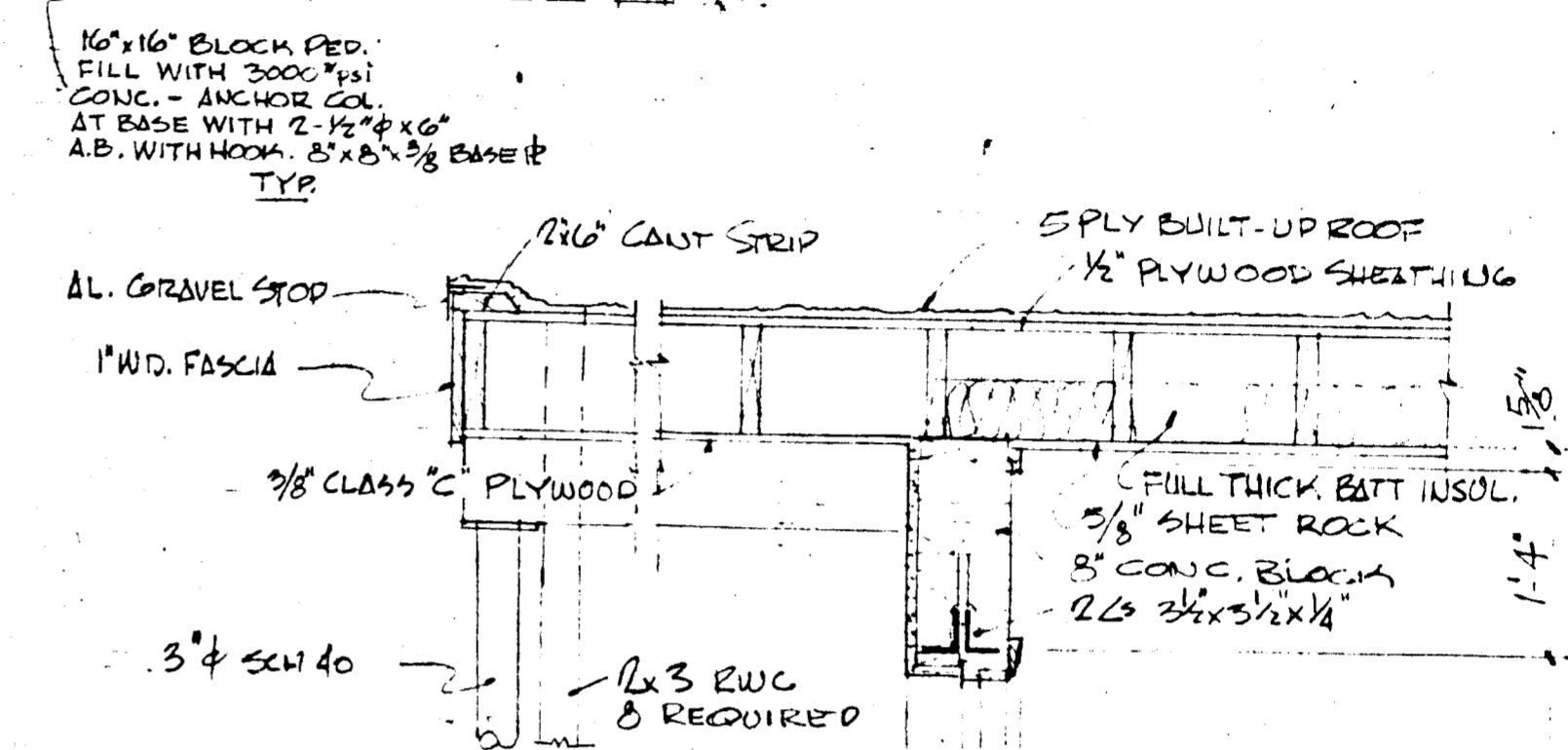


TYPICAL MOTEL UNIT
 FLOOR AREA 170 SQ. FT.
 TOILET 37.5
 TOTAL 213.5 SQ. FT.
 EMPLOYEES 1 TOTAL

SITE PLAN
 1" = 40'-0"



RETAINING WALL 3/8" = 1'-0"



TYPICAL WALL SECTION
 3/4" = 1'-0"

Lon Overton



REVISED MAY 21, 68
 ADDITIONS & ALTERATIONS TO THE RITZ MOTEL ELKBRIDGE, MD FOR MR DENNIS FROCH

ELEVATIONS, SECTIONS, SITE PLAN & DETAILS	SCALE AS SHOWN	DRAWN BY SLH
LON O. OVERTON AIA ARCHITECT PLANNER & ASSOCIATES 1220 PRINCE GEORGE ST ANNAPOLIS, MD		
MAY 68		2