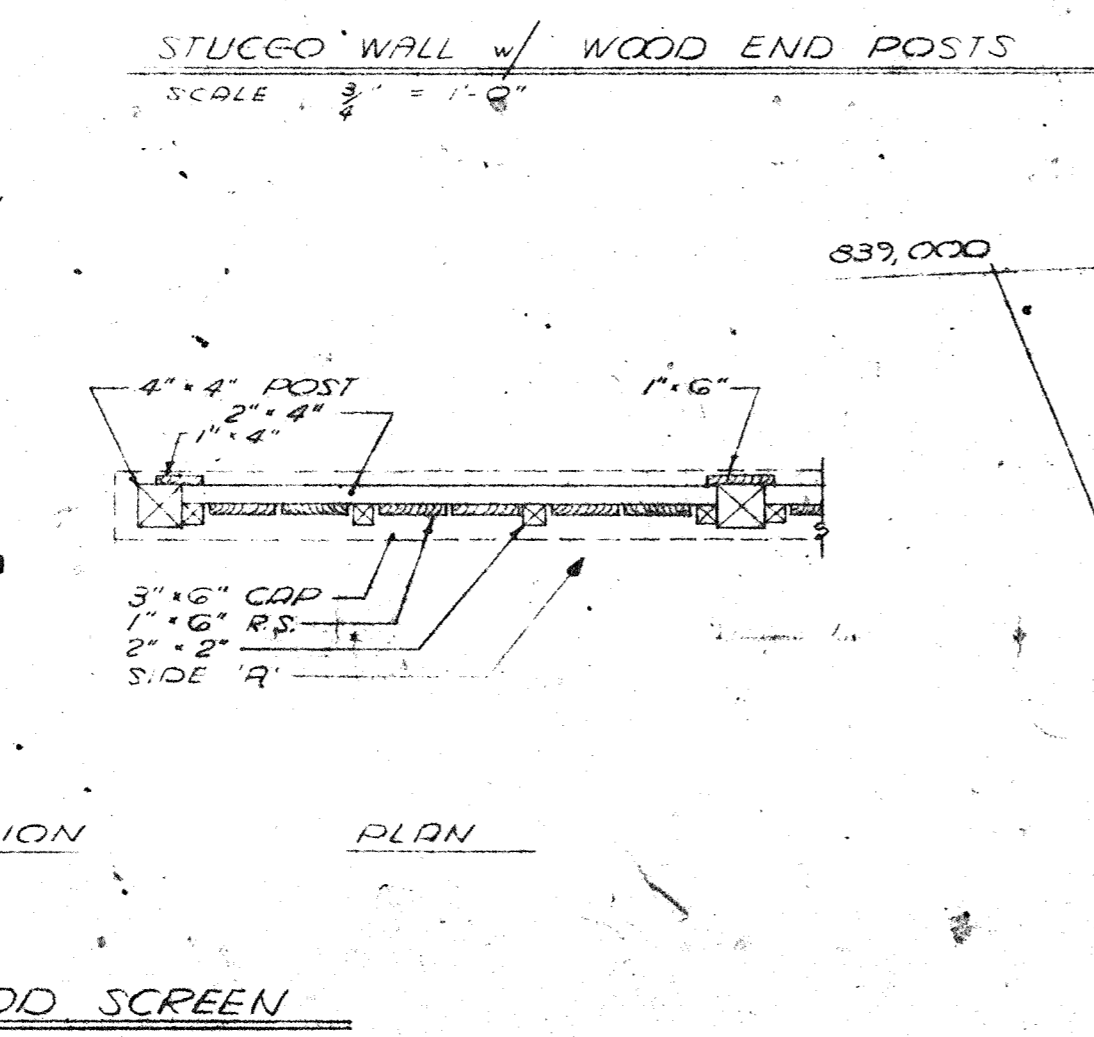
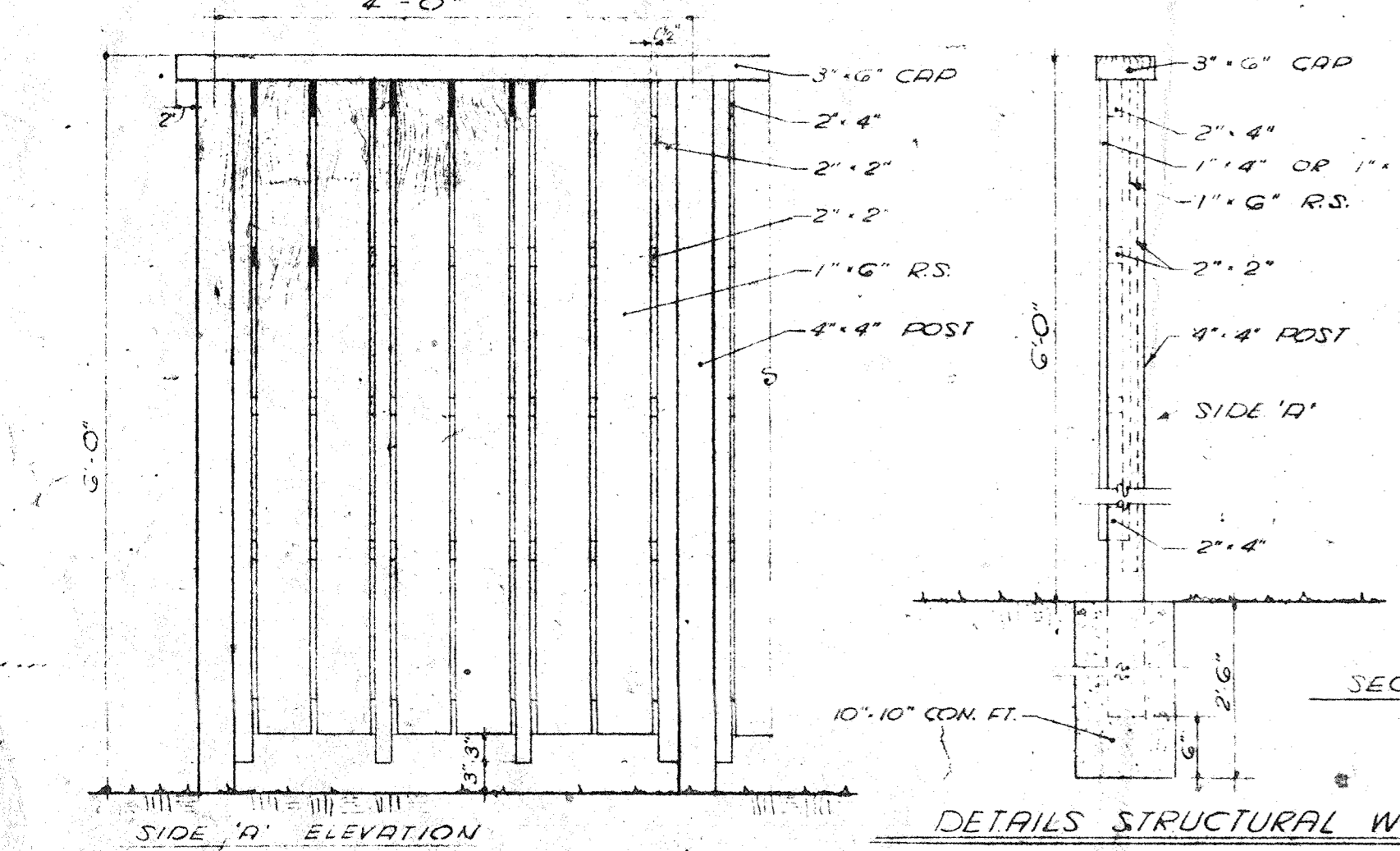
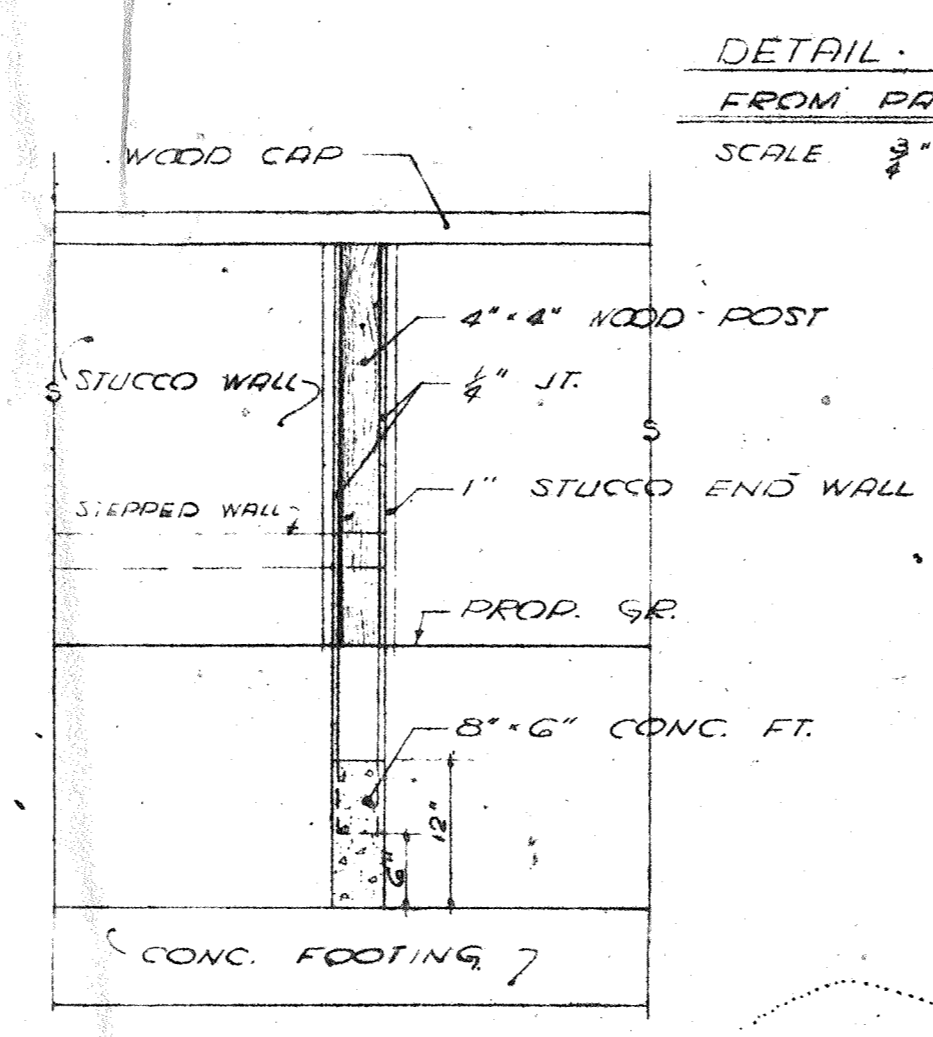
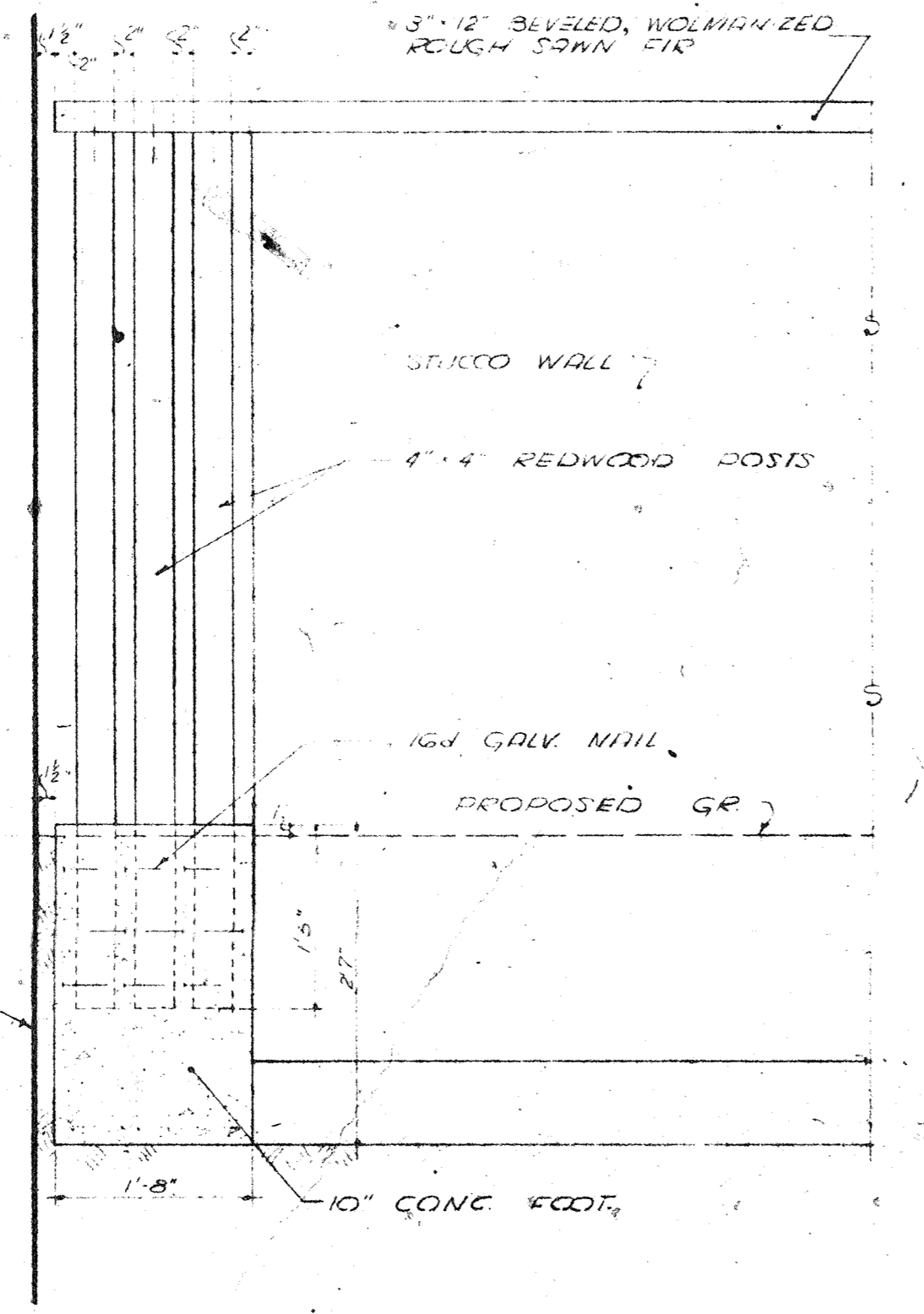
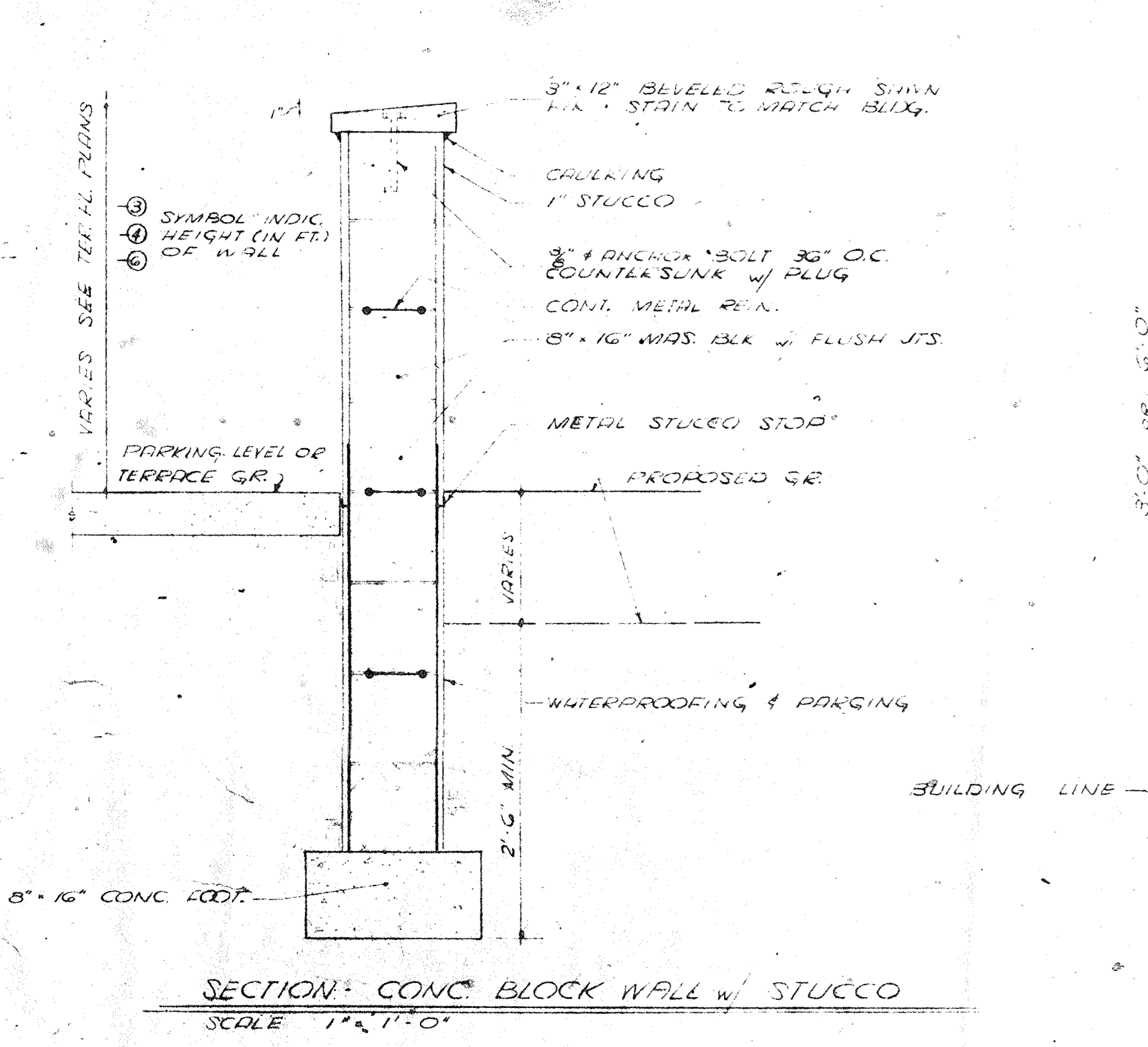


BLDG TYPE	APARTMENT TYPES													TOTAL
	I	II	III	IV	V	X	XI	XII	XIII	XIV				
6A							8	16						24
20B		20		40										60
7C	7		7		7									21
3D	6		3											9
4E									4					4
6F										6	12			18
TOTAL	13	20	10	40	7	8	16	4	6	12				136



EXR JT DETAIL FOR STUCCO WALL  
SCALE 3/4" = 1'-0"  
NOTE: MAXIMUM DIMENSION BETWEEN EXR JTS. SHALL NOT EXCEED 24" O.C.

GENERAL NOTES

- SEE SHEET NO. 2 OF 2, C.D. MESSICK, JR. AND ASSOC. - ANNAPOLIS, MARYLAND SEPTEMBER, 1966, FOR PROPERTY OUTLINE AND COORDINATES VILLAGE OF WILDE LAKE SUBDIVISION.
- FOR BASELINE OF WILDE LAKE SEE SHEET NO. 3 OF WILDE LAKE RESERVOIR AND SHORELINE IMPROVEMENTS BY JEROME S. WOLFE AND ASSOC., INC.
- FOR STORM DRAIN COMPUTATIONS, PROFILES AND DETAILS SEE DRAWINGS PREPARED BY CONSULTOR, "DUNSMITH AND ASSOC.", OCTOBER 11, 1966.
- ALL SITE UTILITIES EXCLUSIVE OF STORM DRAIN SHALL BE BY OTHERS.
- ALL GRADES SHOWN ARE TO BE FINISH GRADES. GRADED AREAS WITHIN THE PROJECT BOUNDARIES NOT NOTED FOR OTHER TREATMENT SHALL BE CONSIDERED TOPSOIL AREAS.

NUMBER OF 2 BEDROOMS	12
NUMBER OF 3 BEDROOMS	24

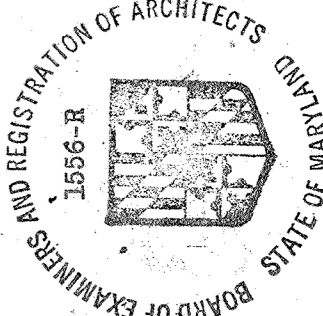
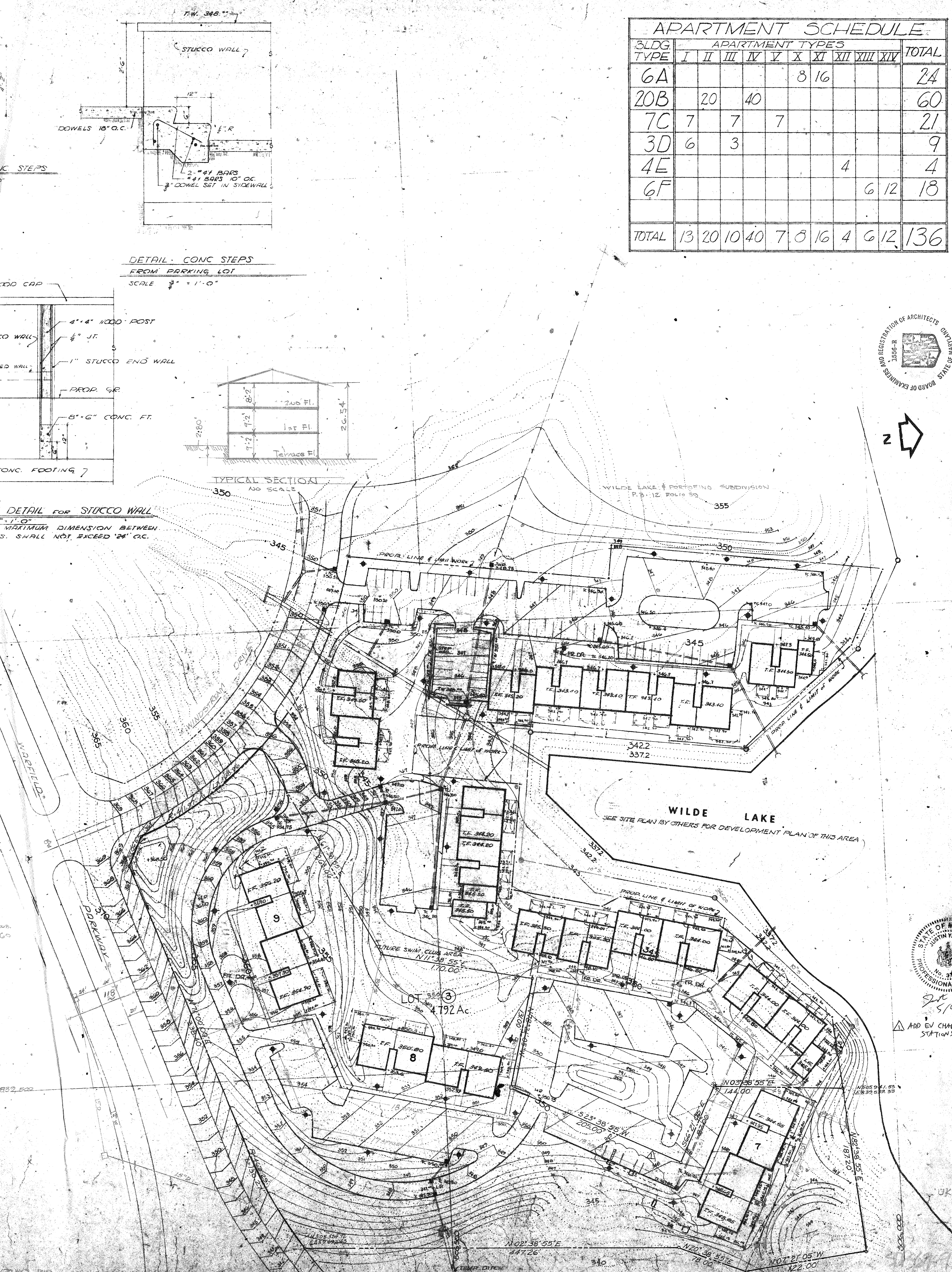
NOTE: ONLY BUILDINGS 1, 8, 9 SHOWN ON THIS PLAN ARE INCLUDED IN THIS SUBMISSION.

LEGEND

- EXISTING CONTOUR
- PROPOSED CONTOUR
- PROPOSED ST. DR. & INLET
- PROPOSED SAN. SEWER
- EXTERIOR LAIR LOCATION
- FR. DR. FRENCH DRAIN UNDER SIDEWALK

APPROVED SITE PLAN		APPROVED: HOWARD CO. PLANNING COMMISSION	
<i>James L. Harris</i>	9-26-67	<i>James L. Harris</i>	9-26-67
PLANNING DIRECTOR	DATE	PLANNING DIRECTOR	DATE
<i>J. H. Clewson</i>	9-26-67	<i>J. H. Clewson</i>	9-26-67
SENIOR ENGINEER	DATE	SENIOR ENGINEER	DATE
<i>Norman S. O'Neill</i>	9-19-67	<i>Norman S. O'Neill</i>	9-19-67
ROADS ENGINEER	DATE	ROADS ENGINEER	DATE
<i>W. O. Polbat</i>	9-20-67	<i>W. O. Polbat</i>	9-20-67
CHIEF ENGINEER	DATE	CHIEF ENGINEER	DATE
<i>Thos. R. Shum</i>	9-21-67	<i>Thos. R. Shum</i>	9-21-67
COUNTY HEALTH OFFICER	DATE	COUNTY HEALTH OFFICER	DATE

SITE ANALYSIS	
AREA OF SITE	4.792 AC.
SQUARE FEET	208,739.52
UNIT COUNT	40
ALLOWABLE PROVIDED	36
COVERAGE	30%
ALLOWABLE PROVIDED	9.5%
PARKING REQUIRED	54
PROVIDED	68
TOTAL FLOOR AREA	55,925 SQ. FT.
FLOOR AREA PER APT	1,398 SQ. FT.



ARCHITECT  
Joseph B. Nelson  
Associates, AIA  
1045 Taylor Avenue, Suite 208  
Baltimore, Maryland 21204

LAND PLANNER  
Jack Datt and Associates

COLUMBIA  
Md.  
Howard Co.

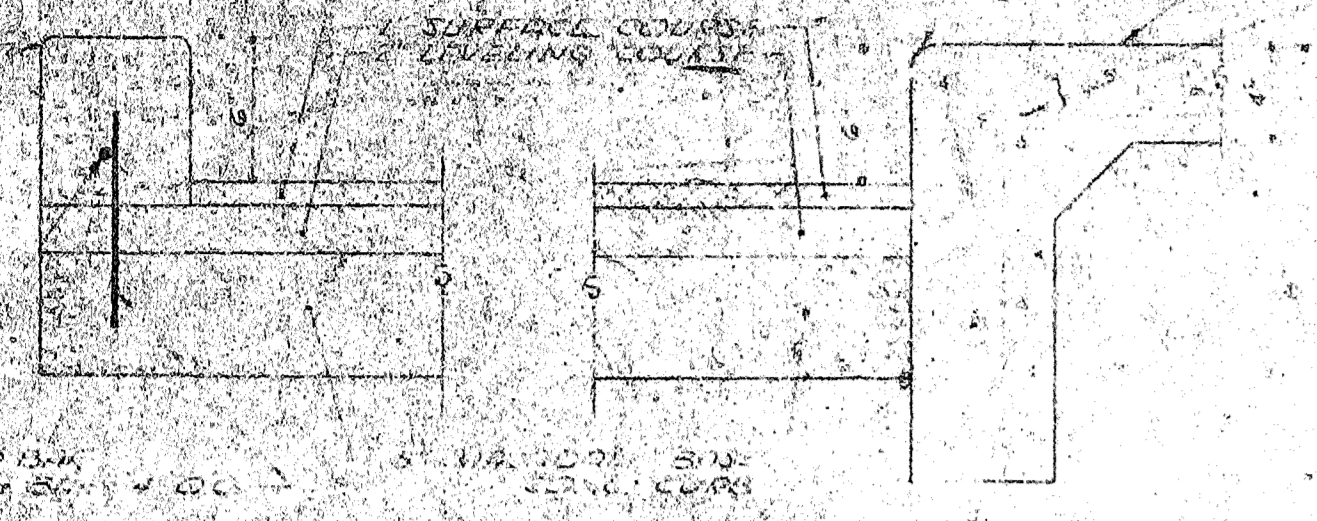
Revisions  
DEC 12, 1966  
MAY 3, 1967  
MAY 14, 1967

Sheet Title  
SITE PLAN  
GRADING &  
ST. DR. LAYOUT  
SCALE: 1" = 50'

Job No.  
716,916

Sheet No.  
SD 1

NOV. 11, 1966

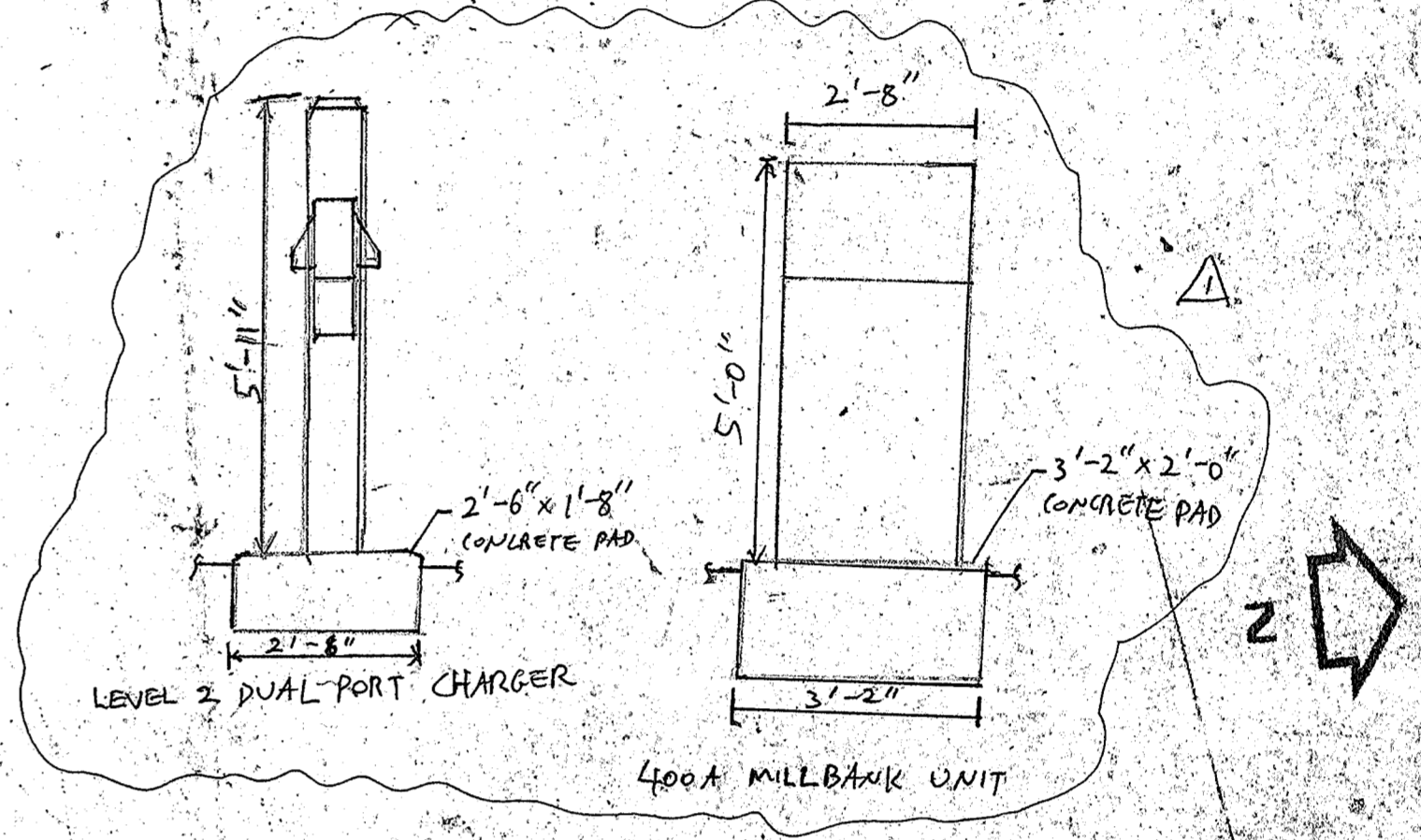
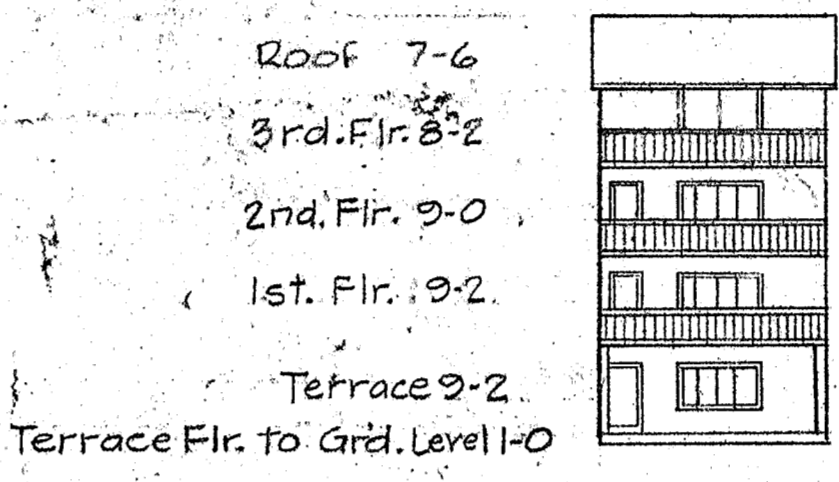


APARTMENT SCHEDULE

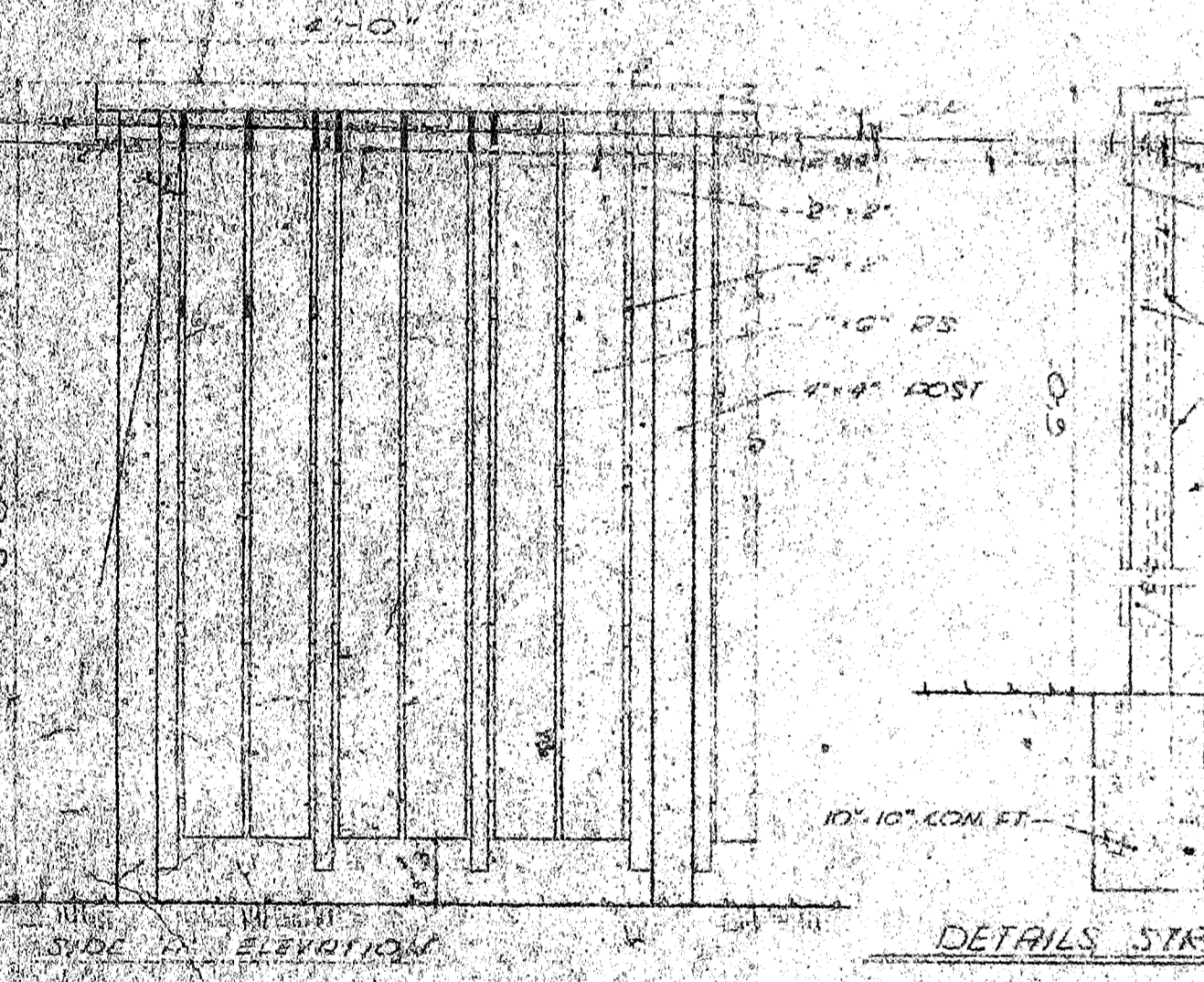
BLDG. #	1	2	3	4	5	6	7	8	9
1 Bedroom	5	10	5	5	15	3	-	-	-
2 Bedroom	8	12	9	7	13	4	2	2	2
3 Bedroom	-	2	-	-	2	-	10	10	10
Sub-Total	13	24	14	12	30	7	12	12	12
BLDGs. 1-6	100 (APART.)								
BLDGs. 7-9	36 (APART.)								
TOTAL	136 UNITS (APART.)								

BLDG. #	APARTMENT TYPE										TOTAL
	I	II	III	IV	V	VI	VII	VIII	IX	X	
1	5	10	5	5	15	3	-	-	-	-	53
2	8	12	9	7	13	4	2	2	2	-	63
3	-	2	-	-	2	-	10	10	10	-	34
Sub-Total	13	24	14	12	30	7	12	12	12	-	136

MAXIMUM HEIGHT OF BLDG.  
HEIGHT OF 'C' TYPE BLDG.



SECTION - CONC. BLOCK WITH STUCCO



DETAILS STRUCTURAL WOOD SCREEN

GENERAL NOTES

1. SEE SHEET NO. 2 & 3 C.D. MESSICK, JR. IN DESIG. ANNAPOLIS, MARYLAND SEPTEMBER 1966, FOR EXISTING UTILITIES AND COORDINATES - UTILITY OF WILDE LAKE - SUBSTATION.
2. FOR DESIGN OF WILDE LAKE SEE SHEET NO. 2 & 3 C.D. MESSICK, JR. IN DESIG. ANNAPOLIS, MARYLAND SEPTEMBER 1966, FOR EXISTING UTILITIES AND COORDINATES - UTILITY OF WILDE LAKE - SUBSTATION.
3. FOR DESIGN OF WILDE LAKE SEE SHEET NO. 2 & 3 C.D. MESSICK, JR. IN DESIG. ANNAPOLIS, MARYLAND SEPTEMBER 1966, FOR EXISTING UTILITIES AND COORDINATES - UTILITY OF WILDE LAKE - SUBSTATION.
4. ALL SITE UTILITIES EXCEPT GAS AND WATER SHALL BE AS SHOWN ON THIS PLAN.
5. ALL UTILITIES SHALL BE AS SHOWN ON THIS PLAN.
6. ALL UTILITIES SHALL BE AS SHOWN ON THIS PLAN.

SITE PLAN  
APPROVED ON 10-25-67 BY  
ACTION OF THE HOWARD COUNTY  
PLANNING COMMISSION  
*Thomas H. Hannon*  
PLANNING DIRECTOR  
11-8-67

SOIL STABILIZATION  
Areas adjacent to  
blugs are sodded.

AREA	SITE ANALYSIS	
	LOT 1	LOT 3
1 LOT		
Acres	5.301	4.792
Sq. Feet	230,913	208,740
% BLDG. (Sq. Ft.)	119,846.17	59,264.40
COVERAGE		
ALLOWED	30%	20%
PROVIDED	21.6%	11.8%
APART. UNITS		
ALLOWED	105	40
PROVIDED	100	36
PARKING SPACES BLDG. 1-6		
ALLOWED (MIN)	150	54
PROVIDED	177	101

APPROVED SITE PLAN  
HOWARD COUNTY PLANNING COMMISSION

PLANNING DIRECTOR DATE  
APPROVED HOWARD CO. PLANNING COMMISSION  
*J. H. Chausson* 11-7-67  
SENIOR ENGINEER DATE  
APPROVED HOWARD COUNTY ROADS DEPT.  
*Norman Schell* 11-6-67  
ROADS ENGINEER DATE  
APPROVED HOWARD CO. METROPOLITAN COMM.  
*W. O. Stewart* 11-6-67  
CHIEF ENGINEER DATE  
APPROVED HOWARD CO. HEALTH DEPARTMENT FOR  
PUBLIC WATER & SEWER  
*John J. ...* 11/11/67  
COUNTY HEALTH OFFICER DATE



RECEIVED  
JAN 27 1967

RECEIVED  
OCT 24 1967  
PROJECT DEVELOPMENT SECTION

LAND PLANNER  
ARCHITECT  
**Joseph B. Nelson**  
Associates, AIA  
1045 Taylor Avenue, Suite 209  
Baltimore, Maryland 21203

COLUMBIA  
Howard Co.  
Md.

Job No.  
**716,916**  
Sheet No.  
**SD 1**