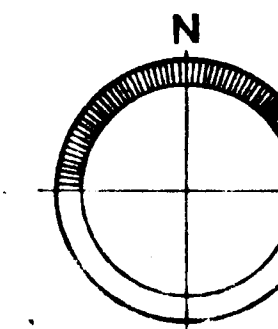


TYPICAL PARKING SPACES  
NO SCALE

NOTE: All slopes to be seeded  
Storm Drain swales to be rolled, tamped, sodded and peqed to prevent erosion



N504,750

BRYANT Woods  
PLAT BOOK 12/46  
**MOUNTAIN**

**GREEN**

**CULLEN**

**CIRCLE**  
BRYANT Woods  
PLAT BOOK 12/46

**CUP**

**PAINTED**

**TERRACE**

**MAY**

**WIND**

**COURT**

HOWARD RESEARCH AND DEVELOPMENT CORP.  
W.H.H. 409/8

SITE PLAN APPROVED ON  
11-8-67 BY ACTION OF  
HOWARD COUNTY PLANNING  
COMMISSION.  
*Thomas S. Neill*  
PLANNING DIRECTOR

APPROVED: SITE PLAN  
HOWARD COUNTY PLANNING COMM.

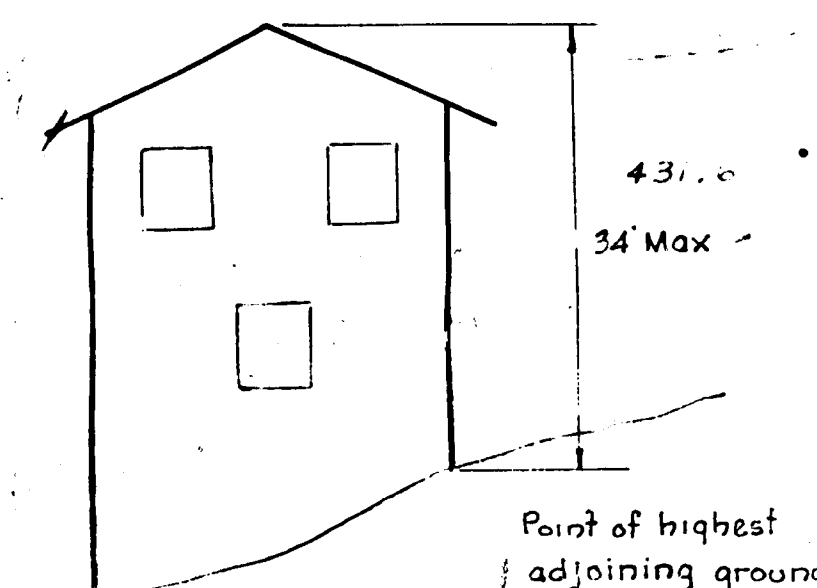
PLANNING DIRECTOR DATE  
*J.N. Clewley* 11-13-67  
SENIOR ENGINEER DATE

APPROVED: HOWARD COUNTY ROADS DEPT.  
*Thomas S. Neill* 11-9-67  
ROAD SUPERINTENDENT DATE

APPROVED: HOWARD COUNTY METROPOLITAN  
COMMISSION  
*W.D. Hunt* 11-14-67  
CHIEF ENGINEER DATE

APPROVED: HOWARD COUNTY HEALTH DEPT.  
FOR PUBLIC WATER & SEWER  
*Shelley* 11/14/67  
COUNTY HEALTH OFFICER DATE

N504,500



HEIGHT LIMITATION  
NO SCALE

APPROVAL IS REQUESTED  
FOR LOTS 13-43 ONLY  
*Carl W. Doble* #2351  
RE: L.S.

DATE	REVISION	BY
7-19-67		J.T.H.

**BEECHEN HILLS  
GRADING AND LOT DRAINAGE PLAN  
FOR  
BUILDINGS 1,4,5,6,7,8**

SCALE	DATE	DRAWN BY	DWG NO.
1" = 30'	7-19-67	J.T.H.	712L

**SITE ANALYSIS**

AREA OF SITE (NET)	4.2 AC.
SQ. FT.	182,952
UNIT COUNT	
ALLOWABLE PROVIDED	42
NO. OF 3 BEDROOM UNITS	42
FL. AREA OF SMALLEST 3 BR	1400 <sup>sq</sup>
NO. OF 4 BEDROOM UNITS	3
FL. AREA OF SMALLEST 4 BR	2800 <sup>sq</sup>
NO. OF 5 BEDROOM UNITS	3
FL. AREA OF SMALLEST 5 BR	2800 <sup>sq</sup>
COVERAGE - MA.	
PARKING REQUIRED AT 1.5 DU.	63
PROVIDED	65
ZONE - SINGLE FAMILY ATTACHED	
TOTAL PARKING SPACE AREA	14,648 <sup>sq</sup>
NO. OF SPACES @ 200 <sup>sq</sup> MIN.	65 (13000 <sup>sq</sup> )

SECTION 7 AREA  
VILLAGE OF WILDE LAKE  
BEECHEN HILLS  
SITE PLAN

November 7, 1967  
CHK BY: [ ] APPROVED: [ ] F B5107-5