
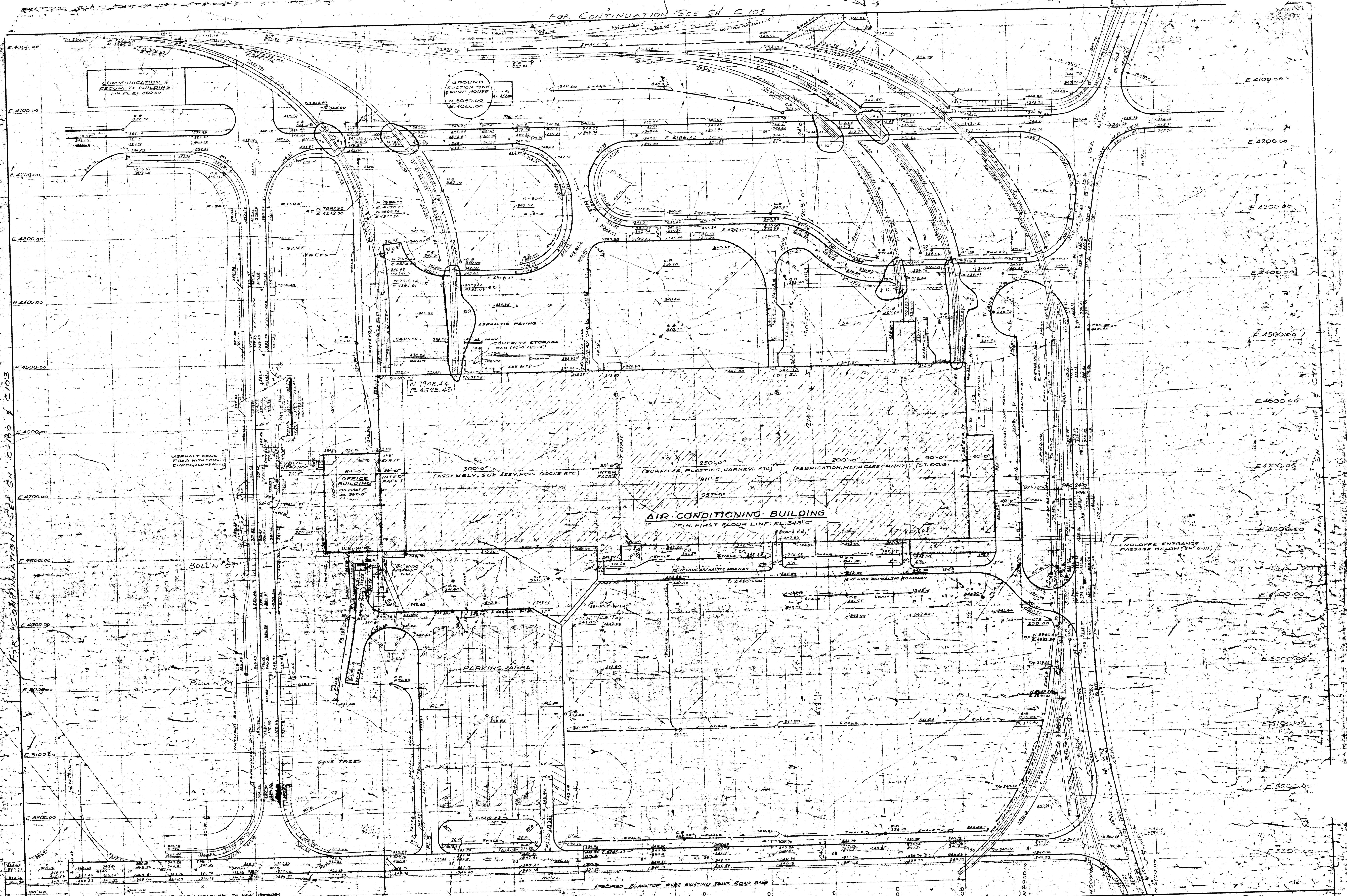
 Developed as shown
 April 1, 1972
 All other areas to be
 Future Development

REVISED 10 APR 69 REVISED 15 MAY 69 REVISED 15 JUNE 69 REVISED 15 JUL 69 REVISED 15 AUG 69 REVISED 15 SEP 69 REVISED 15 OCT 69 REVISED 15 NOV 69 REVISED 15 DEC 69 REVISED 15 JAN 70 REVISED 15 FEB 70 REVISED 15 MAR 70 REVISED 15 APR 70 REVISED 15 MAY 70 REVISED 15 JUN 70 REVISED 15 JUL 70 REVISED 15 AUG 70 REVISED 15 SEP 70 REVISED 15 OCT 70 REVISED 15 NOV 70 REVISED 15 DEC 70		GENERAL CLEP APPLIANCE AND TELEVISION APPLIANCE PARK - EAST COLUMBIA	
MASTER PLAN SOL KING F.A.I.A. ARCHITECT ALBERT KAHN ASSOCIATED ARCHITECTS & ENGINEERS, CONSULTANTS 34 NEW CENTER BUILDING, PHILADELPHIA, PENN. 19106		SHEET NO. 2223 SK	
SHEET NO. 2223 SK	SHEET NO. 2223 SK	SHEET NO. 2223 SK	SHEET NO. 2223 SK

SUP-67

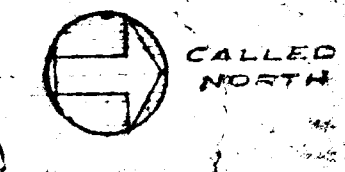
FOR CONTINUATION SEE SH C 105



FOR CONTINUATION SEE SH C 103

FOR CONTINUATION SEE SH C 104

PLOT PLAN



SYMBOLS

PLP INDICATES EXTENT OF PARKING LOT PAVING

R/N 110 INDICATES PAVING NOT INCLUDED IN CONTRACT

B/C O INDICATES BASE COURSE ONLY INCLUDED IN CONTRACT

NO.	DATE	BY	CHKD.	APP'D.
1	11/15/50	J.S.	J.S.	J.S.
2	11/15/50	J.S.	J.S.	J.S.
3	11/15/50	J.S.	J.S.	J.S.
4	11/15/50	J.S.	J.S.	J.S.
5	11/15/50	J.S.	J.S.	J.S.
6	11/15/50	J.S.	J.S.	J.S.
7	11/15/50	J.S.	J.S.	J.S.
8	11/15/50	J.S.	J.S.	J.S.
9	11/15/50	J.S.	J.S.	J.S.
10	11/15/50	J.S.	J.S.	J.S.

GENERAL ELECTRIC
 APPLIANCE AND TELEVISION GROUP
 APPLIANCE PARK - EAST
 COLUMBIA, MISSOURI

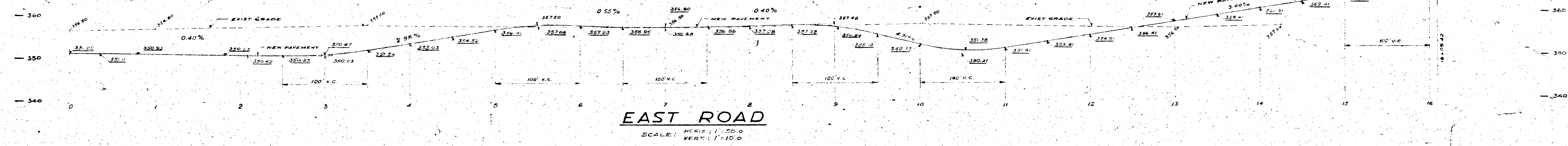
AIR-CONDITIONING BUILDING'S

PLOT PLAN

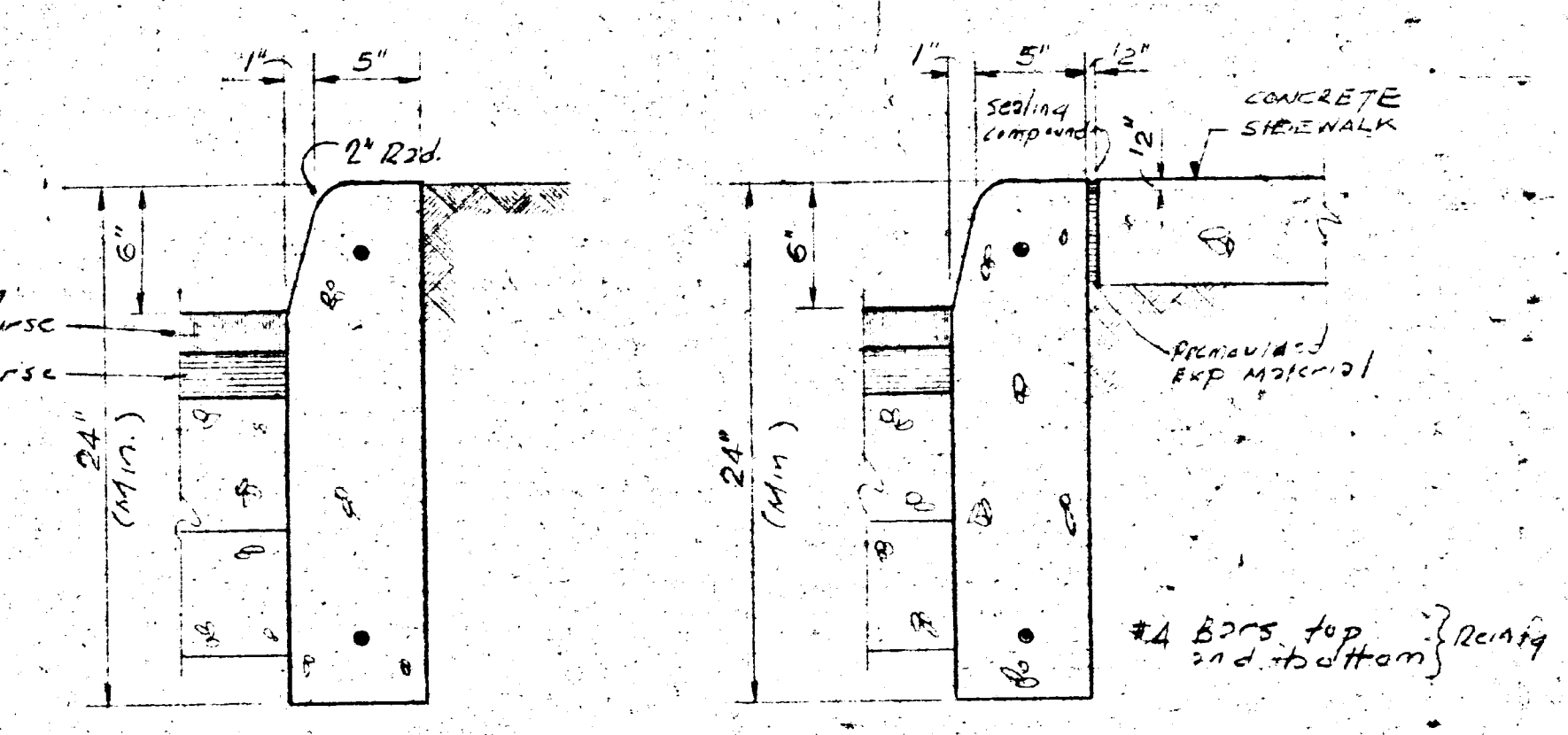
SOL KING F.A.I.A. ARCHITECT
 ALBERT KAHN ASSOCIATED ARCHITECTS & ENGINEERS, CONSULTANTS
 241 NEW CENTER BUILDING DETROIT, MICHIGAN 48201

DATE: 11/15/50
 SCALE: 1" = 30'-0"

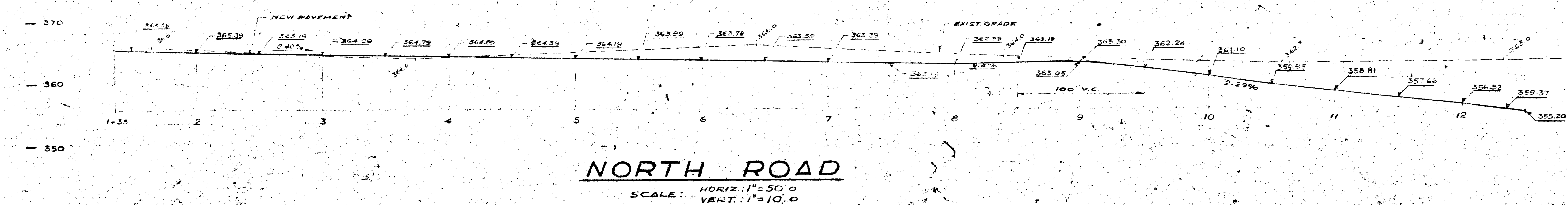
JOB NO. 222410
 SHEET NO. 10



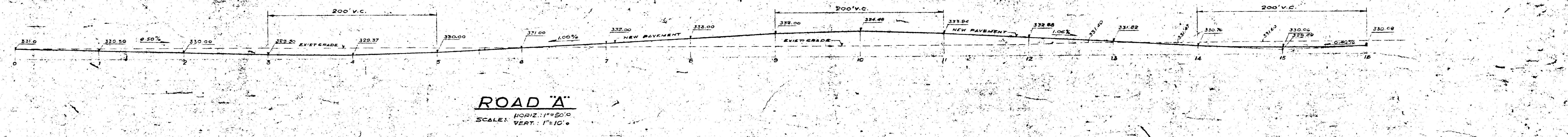
EAST ROAD
SCALE: HORIZ: 1"=50.0
VERT: 1"=10.0



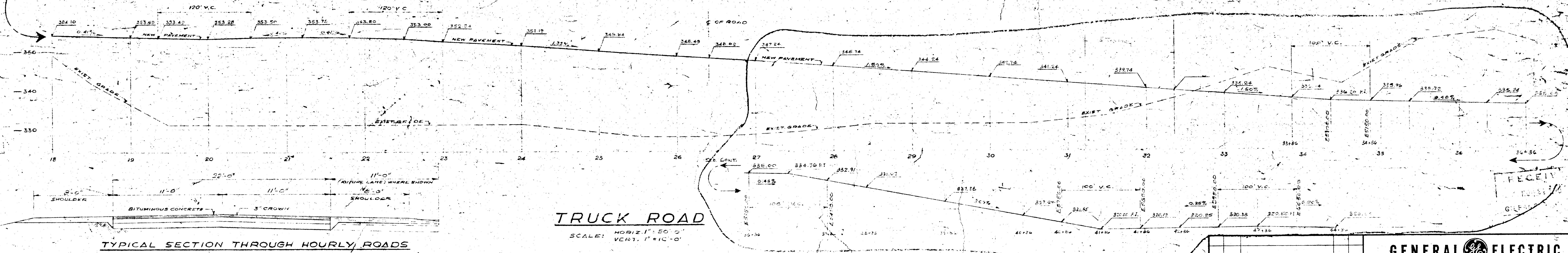
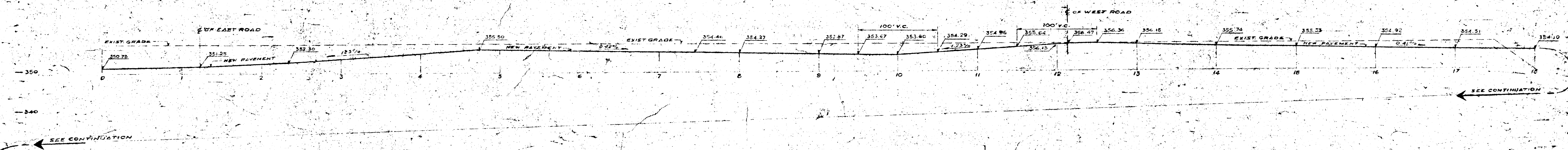
CONCRETE CURB DETAILS
SCALE: 1/2"=1'-0"



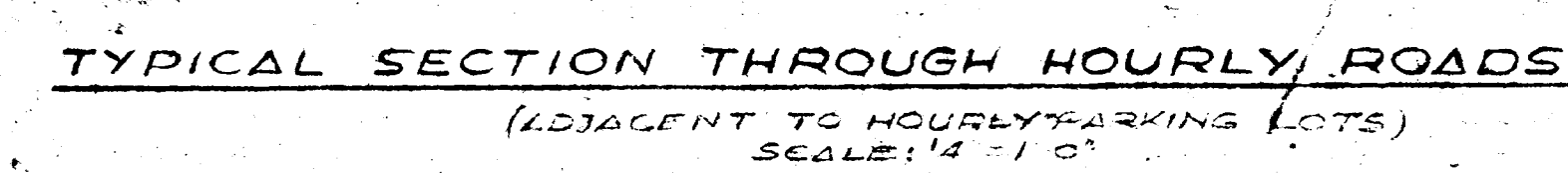
NORTH ROAD
SCALE: HORIZ: 1"=50.0
VERT: 1"=10.0



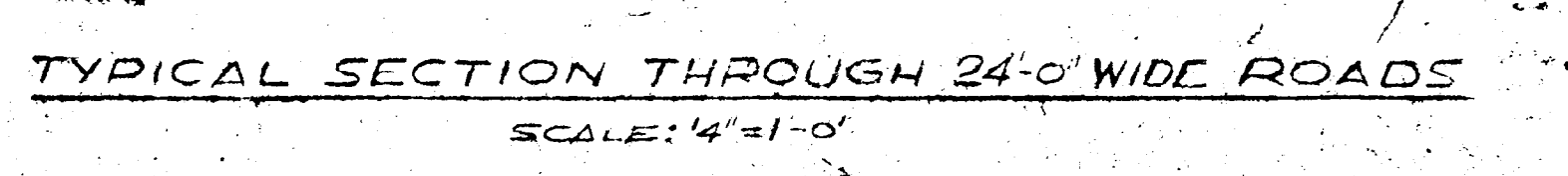
ROAD A
SCALE: HORIZ: 1"=50.0
VERT: 1"=10.0



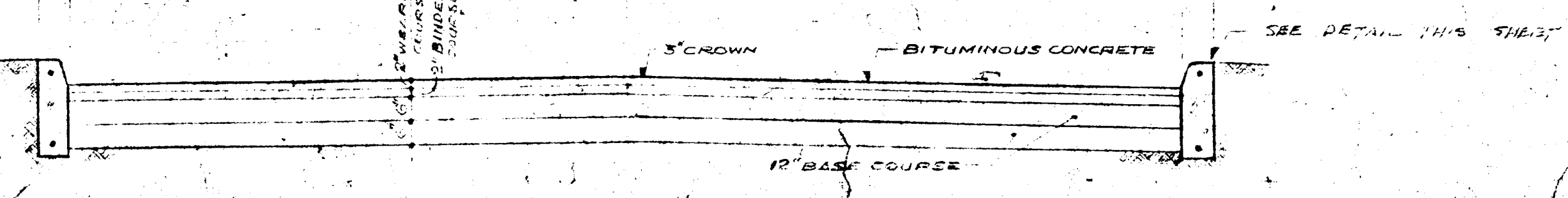
TRUCK ROAD
SCALE: HORIZ: 1"=50.0
VERT: 1"=10.0



TYPICAL SECTION THROUGH HOURLY ROADS
SCALE: 1/4"=1'-0"



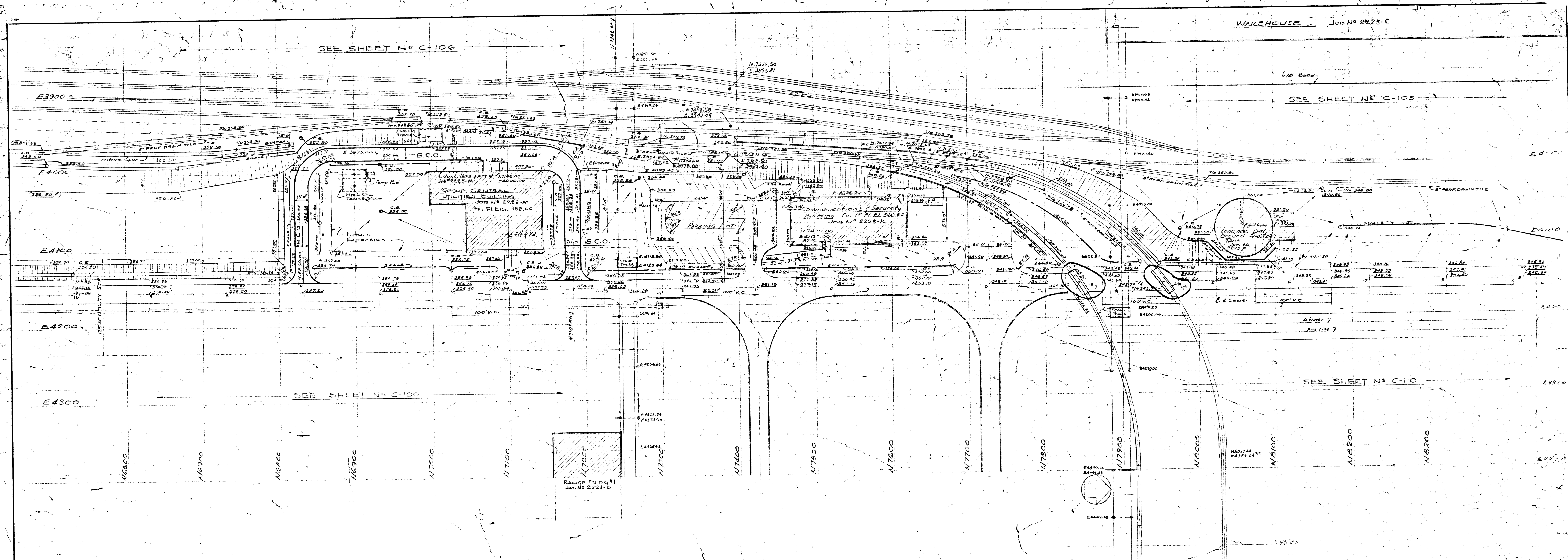
TYPICAL SECTION THROUGH 24'-0" WIDE ROADS
SCALE: 1/4"=1'-0"



TYPICAL SECTION THROUGH ROADS IN MALL
SCALE: 3/8"=1'-0"

GENERAL ELECTRIC			
APPLIANCE AND TELEVISION GROUP			
APPLIANCE PARK - EAST			
COLUMBIA		MARYLAND	
RANGE BUILDING No. 1			
ROAD PROFILES			
SOL KING F.A.I.A. ARCHITECT			
ALBERT HAINY ASSOCIATED ARCHITECTS & ENGINEERS, CONSULTANTS			
34 NEW CENTER BUILDING DETROIT, MICHIGAN 48221			
DATE	BY	APP'D	CHECKED
1/20/69	W. J. HANCOCK	1/23/69	W. J. HANCOCK
REVISED	BY	DATE	BY
ISSUED FOR ARCHITECTURAL		JOB NO. CIVIL	
SUB CONTRACT WORK 616-69		SHEET NO. C-102	
REVISIONS		SCALE 22.5"=1'-0"	
NO.	DESCRIPTION	DATE	BY
1	ISSUED FOR ARCHITECTURAL	1/20/69	W. J. HANCOCK
2	ISSUED FOR ARCHITECTURAL	1/23/69	W. J. HANCOCK
3	ISSUED FOR ARCHITECTURAL	1/23/69	W. J. HANCOCK

ISSUED FOR ARCHITECTURAL
SUB CONTRACT WORK 616-69



WAREHOUSE Job No. 2222-C

SEE SHEET No. C-106

SEE SHEET No. C-105

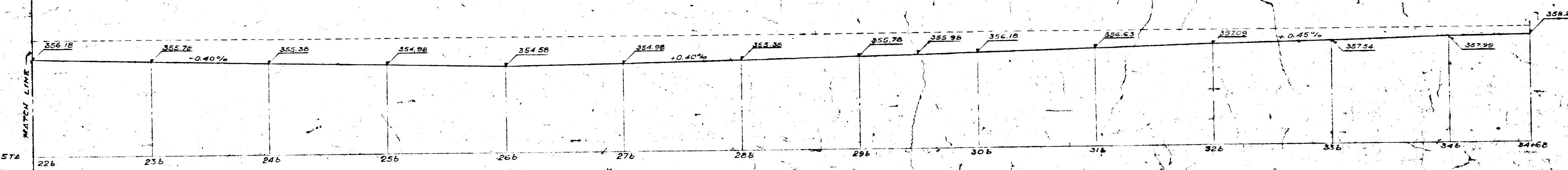
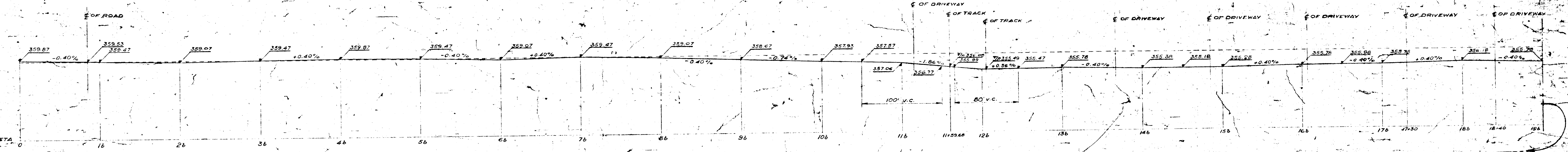
SEE SHEET No. C-100

SEE SHEET No. C-110

AIR CONDITIONING BUILDING Job No. 2223-G

SYMBOLS

- P.L.P. - INDICATES EXTEND OF PARKING LOT PAVING
- R.(N.I.C.) - INDICATES PAVING NOT INCLUDED IN CONTRACT
- B.C.C. - INDICATES BASE COURSE ONLY INCLUDED IN CONTRACT

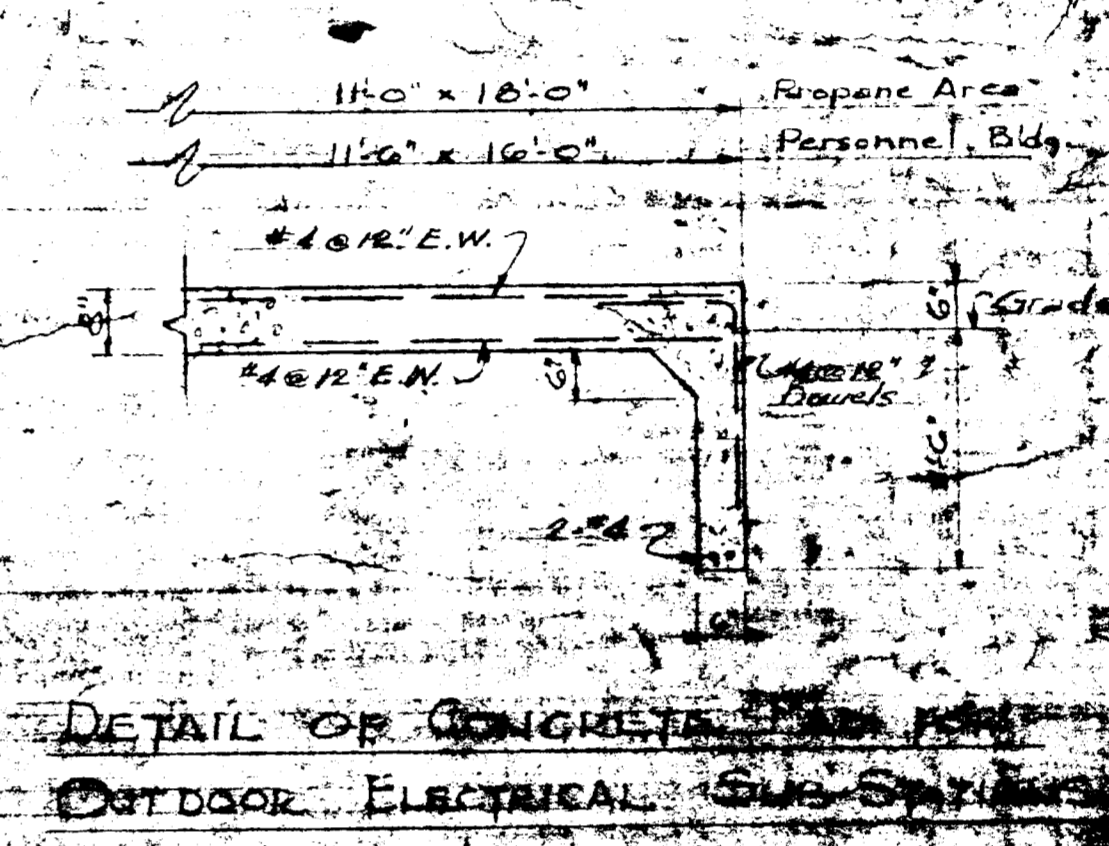
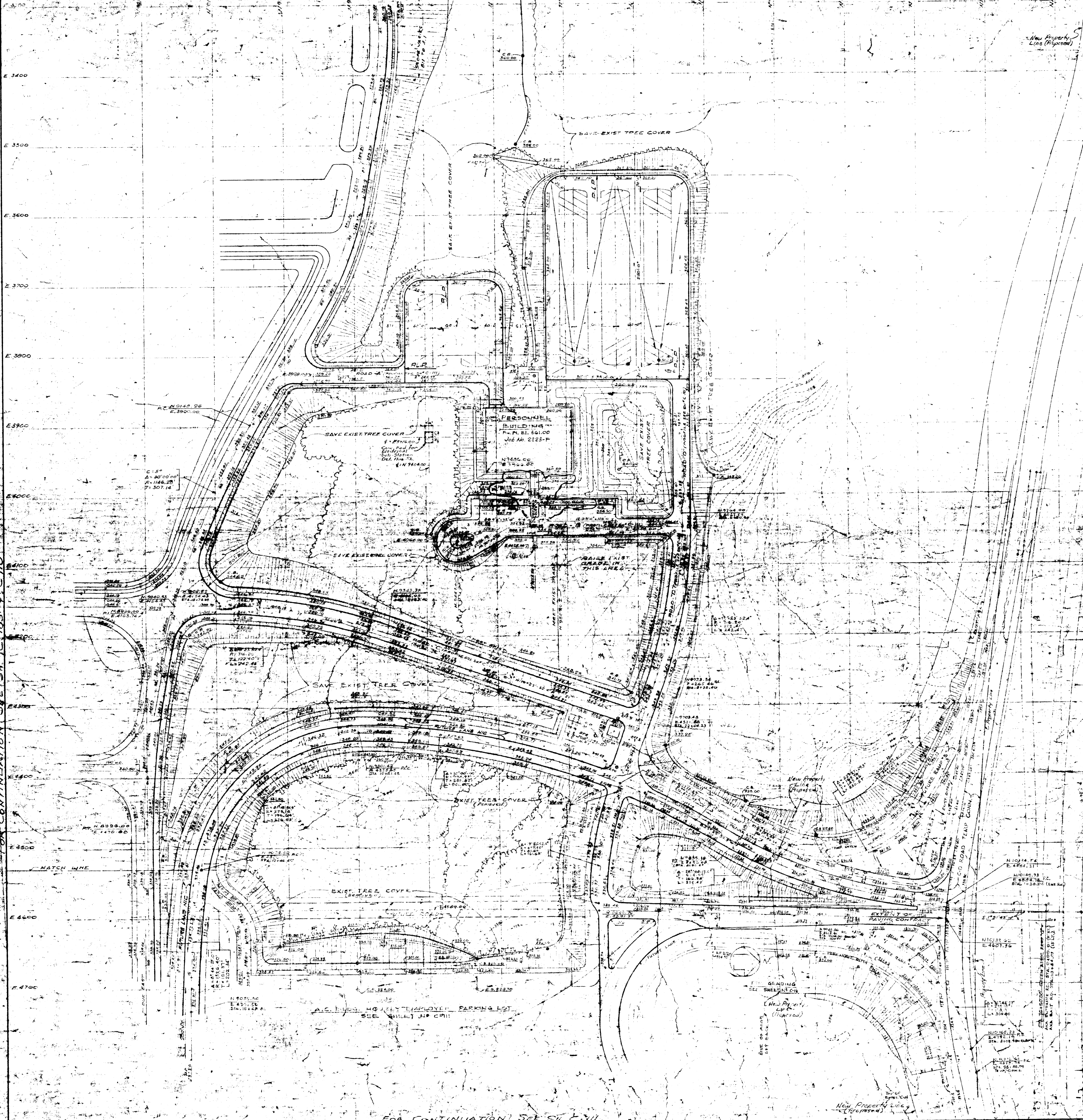


EAST ROAD (WAREHOUSE)

SCALE: HORIZ. 1"=50'-0" VERT. 1"=10'-0"

GENERAL ELECTRIC	
APPLIANCE AND TELEVISION GROUP	
APPLIANCE PARK - EAST	
COLUMBIA MARYLAND	
PART SITE PLAN	
GROUP CENTRAL INTELLIGENCE BUILDINGS	
COMMUNICATIONS AND SECURITY BUILDING	
GROUND SECTION TANK AND PUMP HOUSE SITES	
SOL KING P.A.A. ARCHITECT	
ALBERT KAHN ASSOCIATED ARCHITECTS & ENGINEERS CONSULTANTS	
341 NEW CENTER BUILDING DETROIT, MICHIGAN 48226	
DATE: 11/24/54	SCALE: 1/8"=1'-0"
BY: [Signature]	CHECKED: [Signature]
APP'D: [Signature]	DATE: 11/24/54

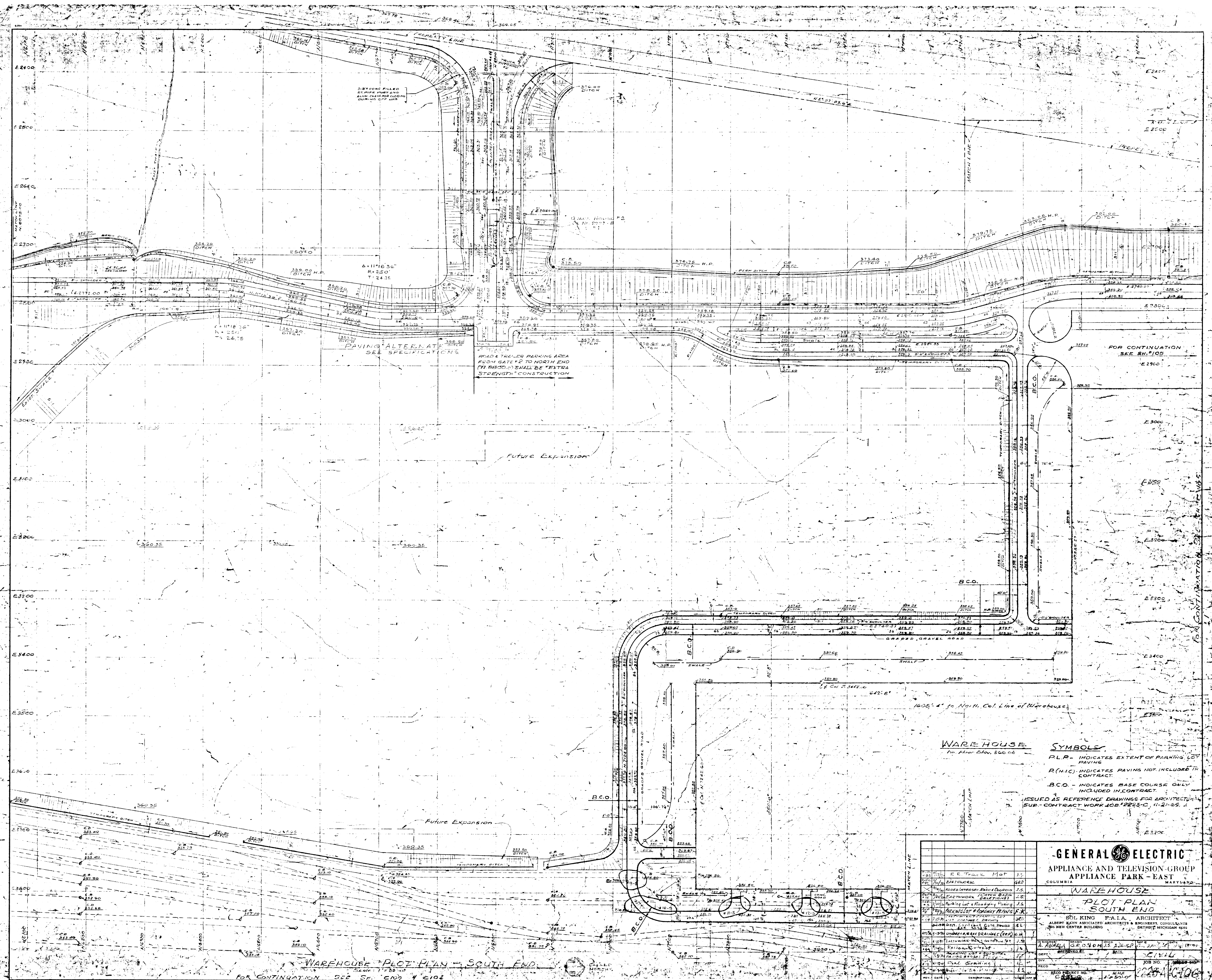
FOR CONTINUATION SEE SH. C-1051 & C-110



SYMBOLS
 P.L.P. - INDICATES EXTENT OF PARKING LOT PAVING
 P.N.I.C. - INDICATES PAVING NOT INCLUDED IN CONTRACT
 B.C.O. - INDICATES BASE COURSE DRILL INCLUDED IN CONTRACT

GENERAL ELECTRIC	
APPLIANCE AND TELEVISION GROUP	
APPLIANCE PARK - EAST	
COLUMBIA, MARYLAND	
PART SITE PLAN	
PERSONNEL BUILDING DET. PLANE	
ENTRANCE #1	
SOL KING, P.A.I.A. ARCHITECT	
ALBERT KAHN ASSOCIATED ARCHITECTS & ENGINEERS, CORP.	
24 NEW CENTER BUILDING, BALTIMORE, MARYLAND	
NO.	DESCRIPTION
1	PREPARED AND CHECKED
2	DESIGNED BY
3	APPROVED BY
4	DATE
5	SCALE
6	PROJECT
7	DATE
8	DESCRIPTION
9	DATE
10	DESCRIPTION
11	DATE
12	DESCRIPTION
13	DATE
14	DESCRIPTION
15	DATE
16	DESCRIPTION
17	DATE
18	DESCRIPTION
19	DATE
20	DESCRIPTION
21	DATE
22	DESCRIPTION
23	DATE
24	DESCRIPTION
25	DATE
26	DESCRIPTION
27	DATE
28	DESCRIPTION
29	DATE
30	DESCRIPTION
31	DATE
32	DESCRIPTION
33	DATE
34	DESCRIPTION
35	DATE
36	DESCRIPTION
37	DATE
38	DESCRIPTION
39	DATE
40	DESCRIPTION
41	DATE
42	DESCRIPTION
43	DATE
44	DESCRIPTION
45	DATE
46	DESCRIPTION
47	DATE
48	DESCRIPTION
49	DATE
50	DESCRIPTION

FOR CONTINUATION SEE SH. C-111



WAREHOUSE PLOT PLAN - SOUTH END
 FOR CONTINUATION SEE SH. CIND 4 C102

WAREHOUSE
 1st floor elev. 300.00

SYMBOLS
 P.L.P. - INDICATES EXTENT OF PARKING LOT PAVING
 R(NIC) - INDICATES PAVING NOT INCLUDED IN CONTRACT
 B.C.O. - INDICATES BASE COURSE ONLY INCLUDED IN CONTRACT
 ISSUED AS REFERENCE DRAWING FOR ARCHITECTURAL SUB-CONTRACT WORK JOB #2225-C, 11-21-65

NO.	DATE	DESCRIPTION	BY
1	11-21-65	ISSUED AS REFERENCE DRAWING FOR ARCHITECTURAL SUB-CONTRACT WORK JOB #2225-C, 11-21-65	...
2
3
4
5
6
7
8
9
10
11
12
13
14
15
16
17
18
19
20

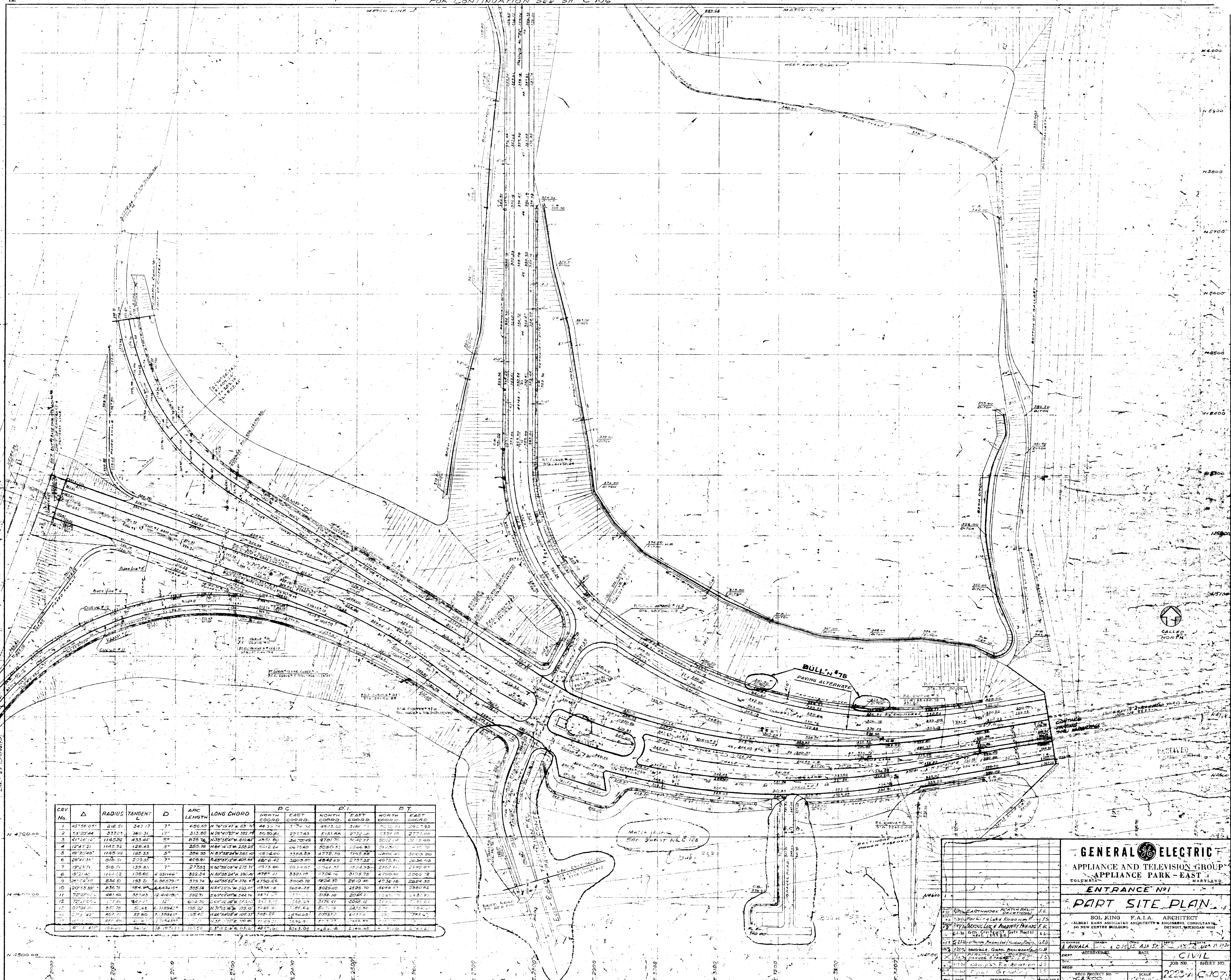
GENERAL ELECTRIC
 APPLIANCE AND TELEVISION GROUP
 APPLIANCE PARK - EAST
 COLUMBIA WAREHOUSE

WAREHOUSE
 PLOT PLAN
 SOUTH END

SOL KING F.A.I.A. ARCHITECT
 ALBERT KAHN ASSOCIATED ARCHITECTS & ENGINEERS, CONSULTANTS
 300 NEW CENTER BUILDING DETROIT MICHIGAN 48201

DATE: 11-21-65
 DRAWN BY: ...
 CHECKED BY: ...
 TITLE: CIVIL
 JOB NO.: ...
 RECD PROJECT NO.: ...
 SHEET NO.: 225A/C102

FOR CONTINUATION SEE SH. C-106



CURV. No.	Δ	RADIUS	TANGENT	D	ARC LENGTH	LONG CHORD	P.C.		P.T.	
							NORTH COORD.	EAST COORD.	NORTH COORD.	EAST COORD.
1	45°58'04"	842.51	347.17	7°	486.69	1167.19	47.05	483.32	3186.11	2907.85
2	53°20'44"	352.03	169.31	17°	313.80	1264.02	30.30	2257.83	5151.88	2779.00
3	61°52'16"	1142.52	433.42	5°	626.76	1767.94	185.01	3470.49	4781.75	3042.77
4	12°47'31"	1142.52	128.33	3°	285.70	1167.19	222.54	2475.48	3280.35	1246.83
5	40°30'04"	1142.52	182.33	4°	368.35	1167.19	330.10	1804.80	3158.29	1772.19
6	28°41'34"	318.51	203.32	7°	408.91	1167.19	405.44	1203.47	4842.69	2797.32
7	18°23'31"	318.51	139.85	7°	273.03	1167.19	272.71	1073.86	3854.01	1761.35
8	18°23'31"	1187.52	138.60	4°	431.66	1187.52	388.46	4787.41	3381.18	1708.16
9	18°23'31"	834.51	193.31	7°	379.74	1167.19	376.47	1750.05	3000.72	7824.37
10	20°53'39"	834.51	184.74	7°	352.74	1167.19	322.47	1898.18	3624.22	2898.70
11	22°01'02"	461.46	157.43	12°	222.71	1167.19	248.74	1874.27	1781.10	2082.22
12	72°41'55"	74.14	30.11	12°	60.25	1167.19	251.03	1107.54	3176.91	2045.12
13	07°04'11"	567.70	52.41	11°	118.94	1167.19	103.45	1186.04	3071.75	3830.86
14	2°03'42"	807.51	57.80	11°	138.82	1167.19	105.37	1281.22	2093.53	1272.44
15	18°23'31"	327.80	37.21	7°	71.42	1167.19	105.37	1281.22	2093.53	1272.44
16	18°23'31"	1500.00	94.76	12°	105.00	1167.19	105.37	1281.22	2093.53	1272.44

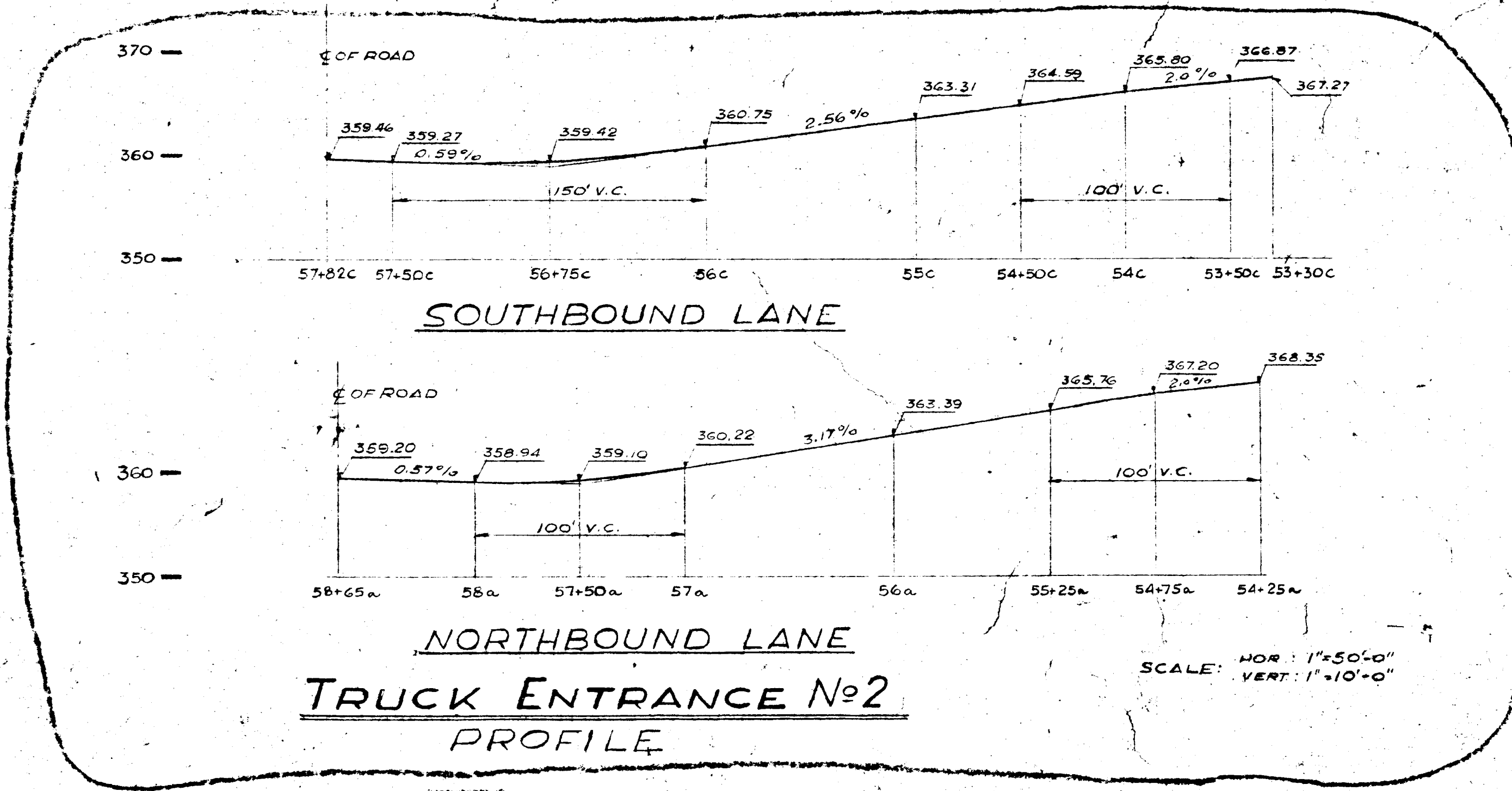
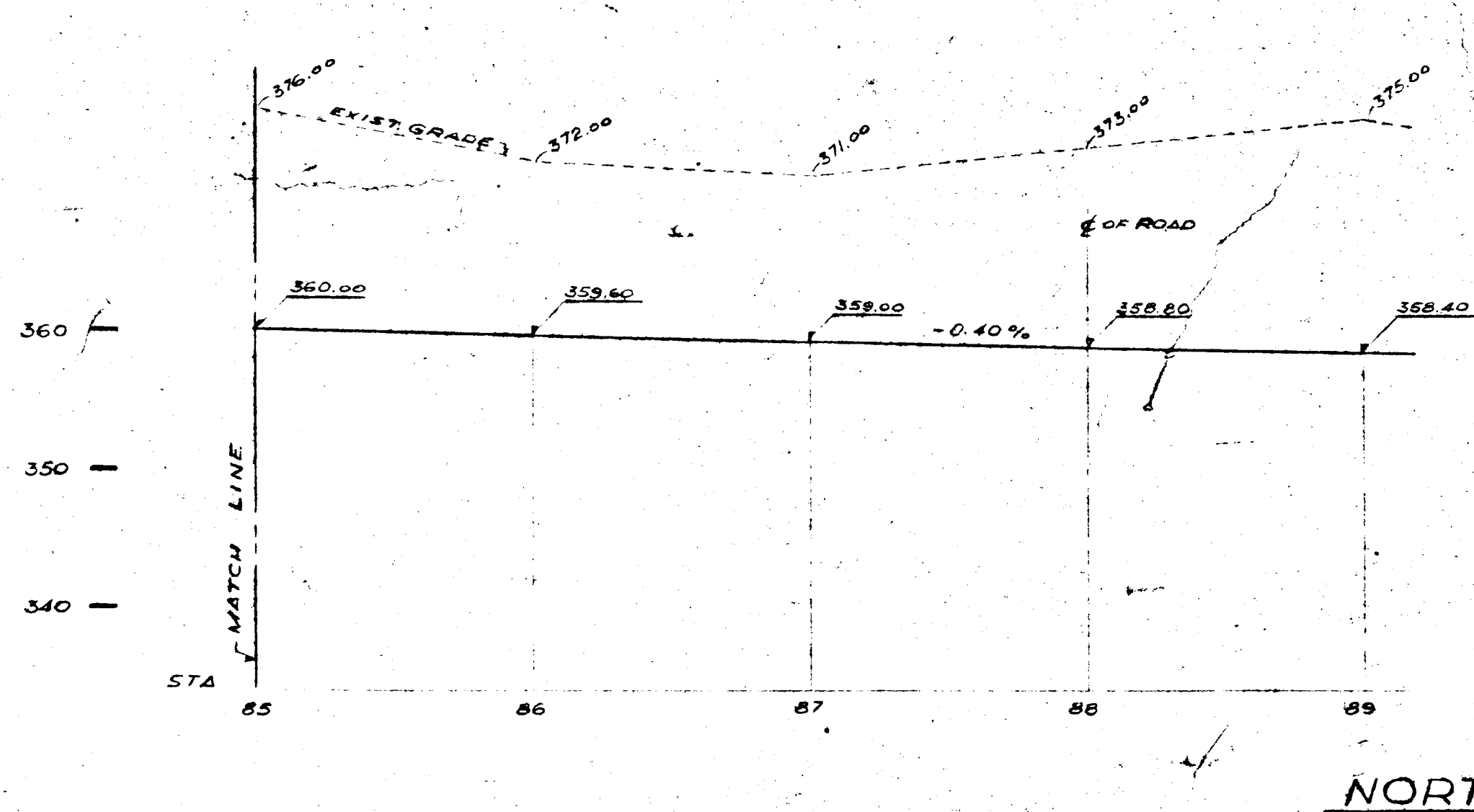
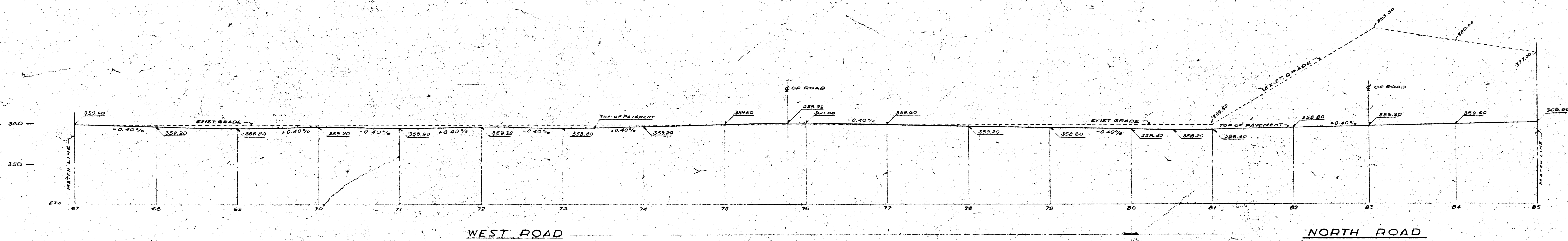
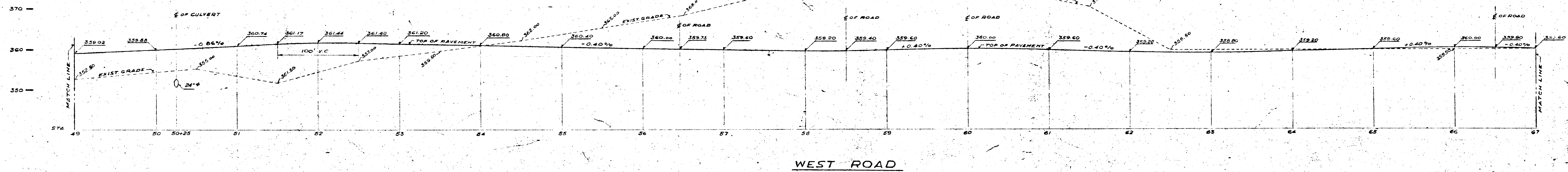
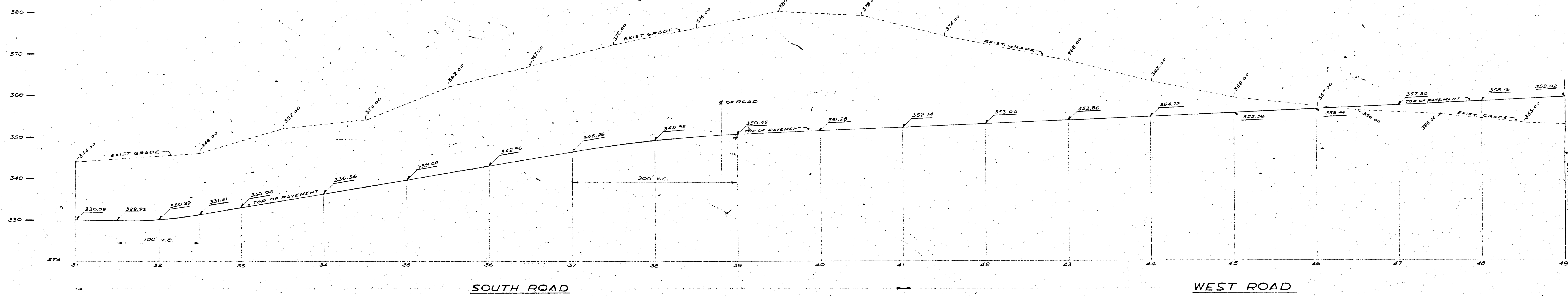
FOR CONTINUATION SEE SH. C-108

GENERAL ELECTRIC
 APPLIANCE AND TELEVISION GROUP
 APPLIANCE PARK - EAST
 COLUMBIA, MARYLAND

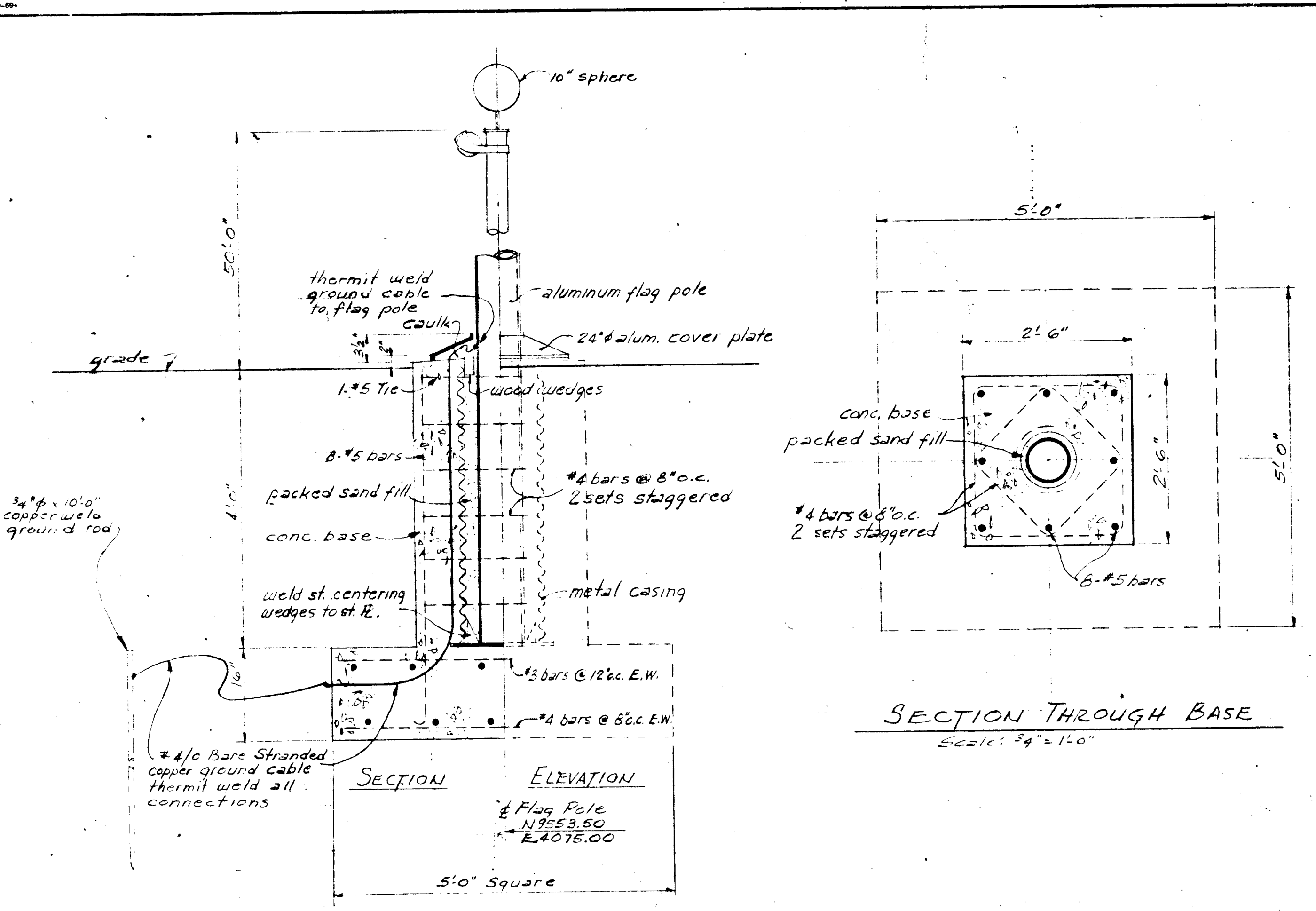
ENTRANCE NO. 1
PART SITE PLAN

SOL KING F.A.I.A. ARCHITECT
 ALBERT KAHN ASSOCIATED ARCHITECTS & ENGINEERS CONSULTANTS
 141 NEW CENTER BUILDING DETROIT, MICHIGAN 48221

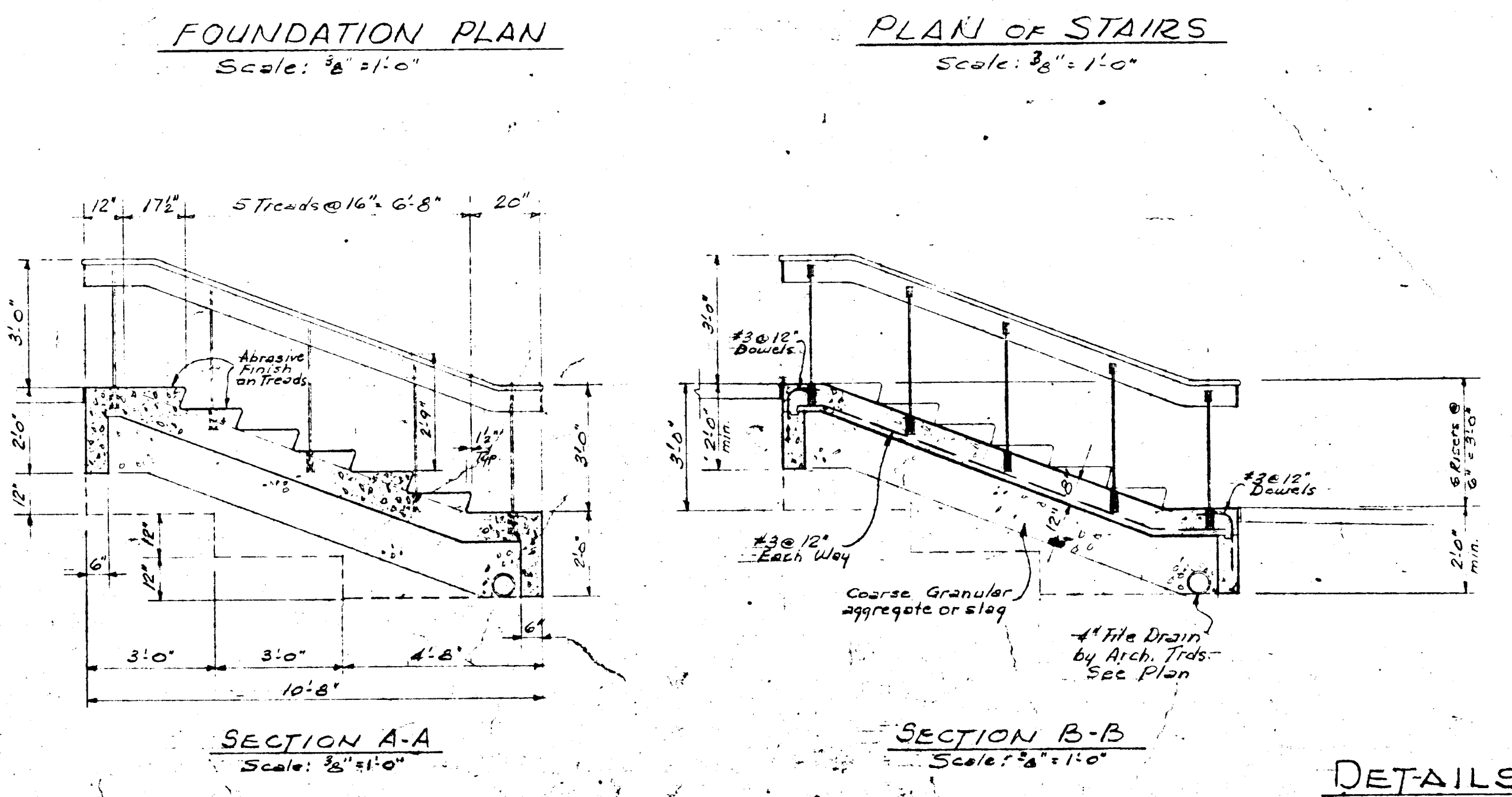
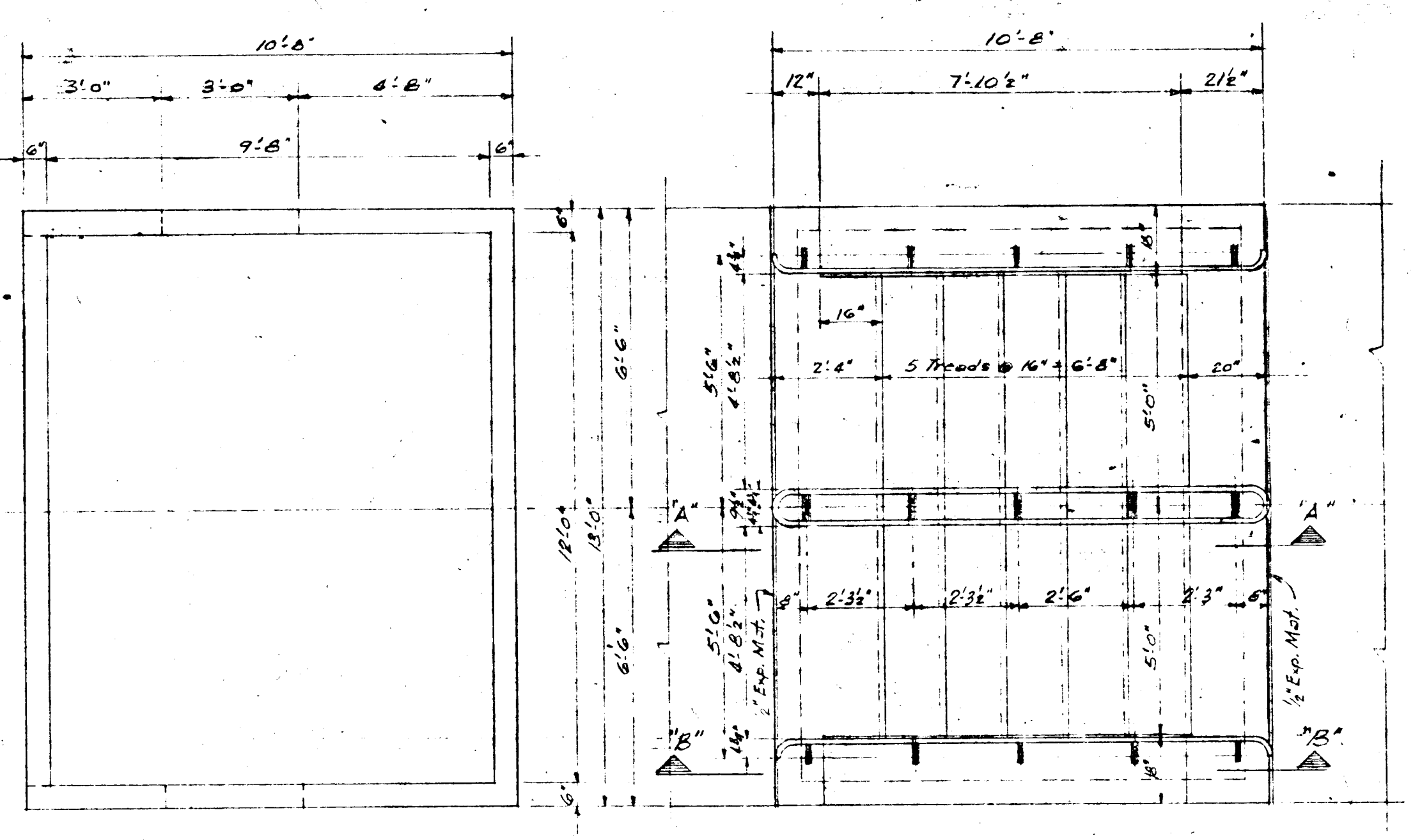
RECD PROJECT NO. 68300
 SCALE 1"=100'
 JOB NO. 2223-A
 SHEET NO. C-107



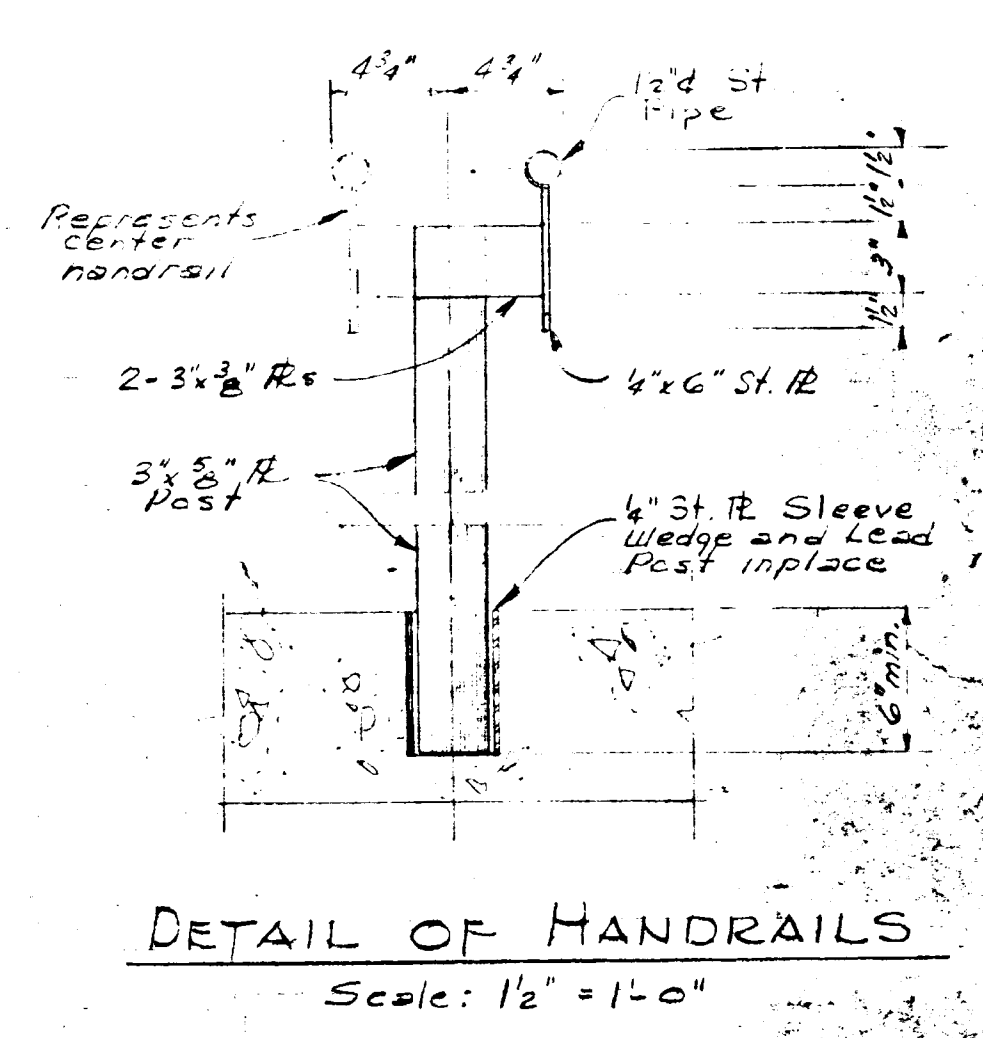
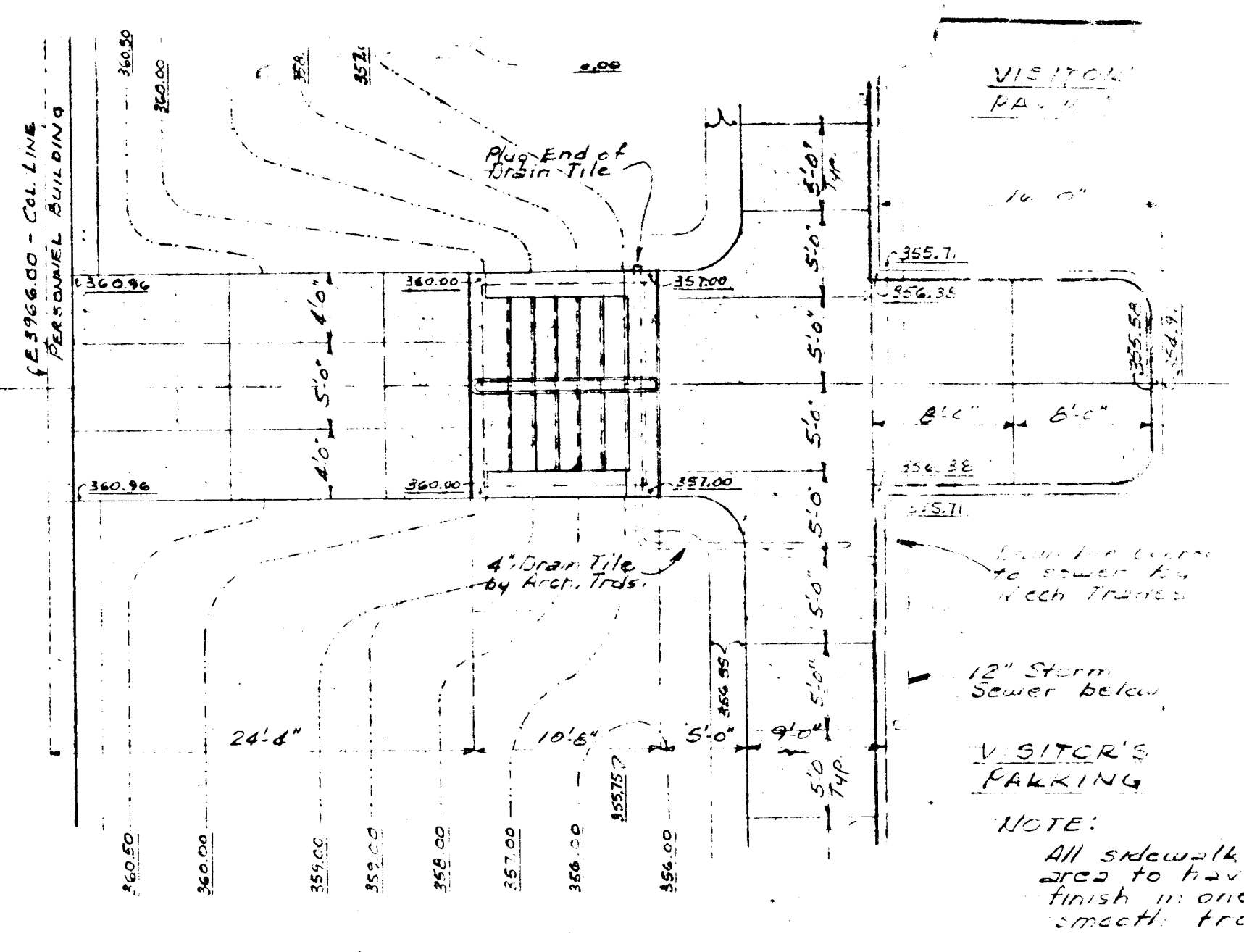
RECEIVED		APR 13 1936		GILMAN	
GENERAL ELECTRIC					
APPLIANCE AND TELEVISION GROUP					
APPLIANCE PARK - EAST					
COLUMBIA		MARYLAND			
WAREHOUSE					
ROAD PROFILES					
SOL KING F.A.I.A. ARCHITECT					
ALBERT KAHN ASSOCIATED ARCHITECTS & ENGINEERS CONSULTANTS					
341 NEW CENTER BUILDING DETROIT, MICHIGAN 48201					
DESIGNED	BY	DATE	CHECKED	DATE	BY
A. ANNALA	D. M.	JS.			
DEPT.	APPROVED	DATE	CIVIL		
J. S.			JOB NO.		
			SHEET NO.		
			2223A C-109		
REV.	DATE	DESCRIPTION	CHG.	BY	DATE



FLAG POLE FOUNDATION DETAILS
Scale: 1/4" = 1'-0"



DETAILS OF CONCRETE STAIRS AND WALKS
AT MAIN ENTRANCE TO PERSONNEL BUILDING



GENERAL ELECTRIC		APPLIANCE AND TELEVISION GROUP		APPLIANCE PARK - EAST	
COLUMBIA		MARYLAND			
FLAG POLE FOUNDATION					
SOL KING F.A.L.A. ARCHITECT					
ALBERT KAHN ASSOCIATED ARCHITECTS & ENGINEERS, CONSULTANTS					
30 NEW CENTER BUILDING DETROIT, MICHIGAN 48201					
DESIGNED BY	DATE	CHECKED BY	DATE		
S. J. ANKALA	GRD	AJA	JUNE 1, 1970		
DEPT	ARCHITECTURAL	SCALE	AS SHOWN	CIVIL	
NO.	1-7	SATURDAY	PROBABLE SIZE	REV	BY
DATE	1-17-70	Flag Pole Foundation	GED	NO.	DATE
REV	DATE	DESCRIPTION	CHANGED BY	NO.	DATE
				2223A	C-114

