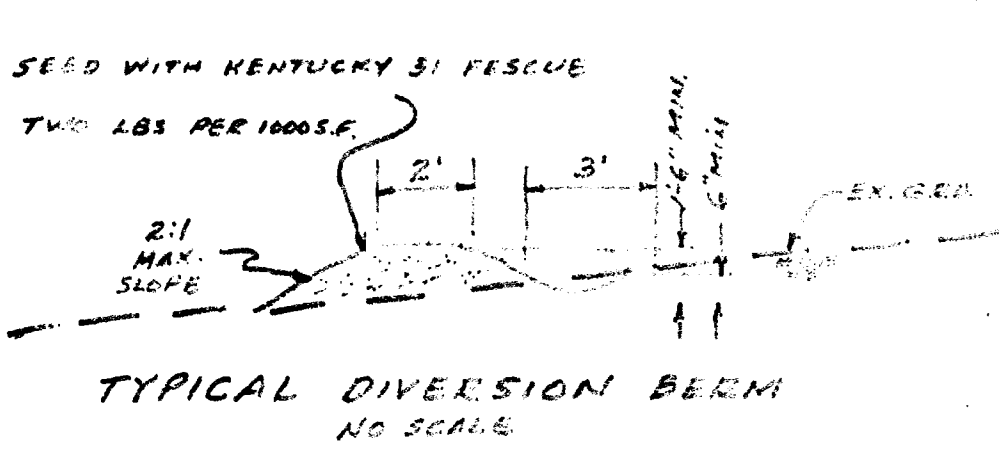


3" x 2" TEE
2" VALVE F.W. BOX
2" CAP

70 L.F. OF EACH
2" TYPE X HARD COPPER 3/8"
4" 3" STEEL PIPE SLAVE VALVE
1" 4" FIBRE TUB 1/2" IN DOME
2" 3" FIBRE TUB 1/2" IN DOME
CAP BOTH ENDS D.B.B.



VILLAGE OF WILDE LAKE
MIDDLE-SR HIGH SCHOOL SITE
PLAT BOOK 15 FOLIO 87

PARKING TABULATION

	REG. P.	5-CAR	25-CAR
EMPL. SEATERS - 10			258
SEATING - 720		251	
TOTALS	276	251	258

THIS DEVELOPMENT PLAN IS APPROVED
FOR SOIL EROSION AND SEDIMENT
CONTROL MEASURES FOR
CONSTRUCTION OF THIS PROJECT
Robert Young 9-10-69

APPROVED
DIVISION OF
LAND DEVELOPMENT
OFFICE OF
PLANNING AND ZONING
OF HOWARD COUNTY
DATE 8-22-69
JWC

RECORDING OF THIS PLAN IS APPROVED

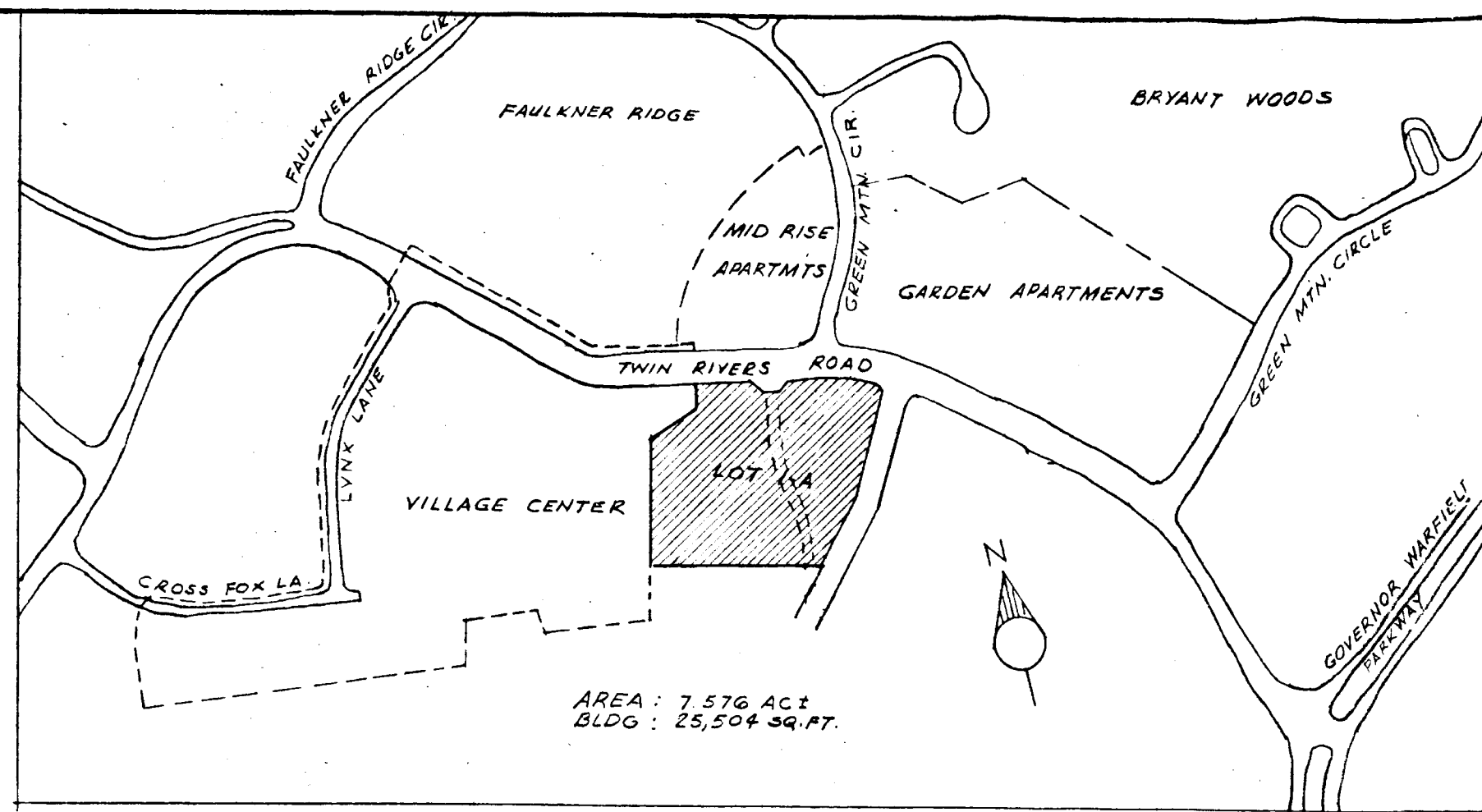
GAUDREAU, INC.



REV. 24 JUN 69
REV. 23 JULY 69

- Robert Young Aug 20/69
- Thomas S. Hammett 9-10-69
- J. H. Clauson 8-22-69
- William S. O'Neil 9-7-69
- B. W. McLeod 8-18-69

APPROVED
PLANNING BOARD
OF HOWARD COUNTY
DATE 9-3-69
JWC



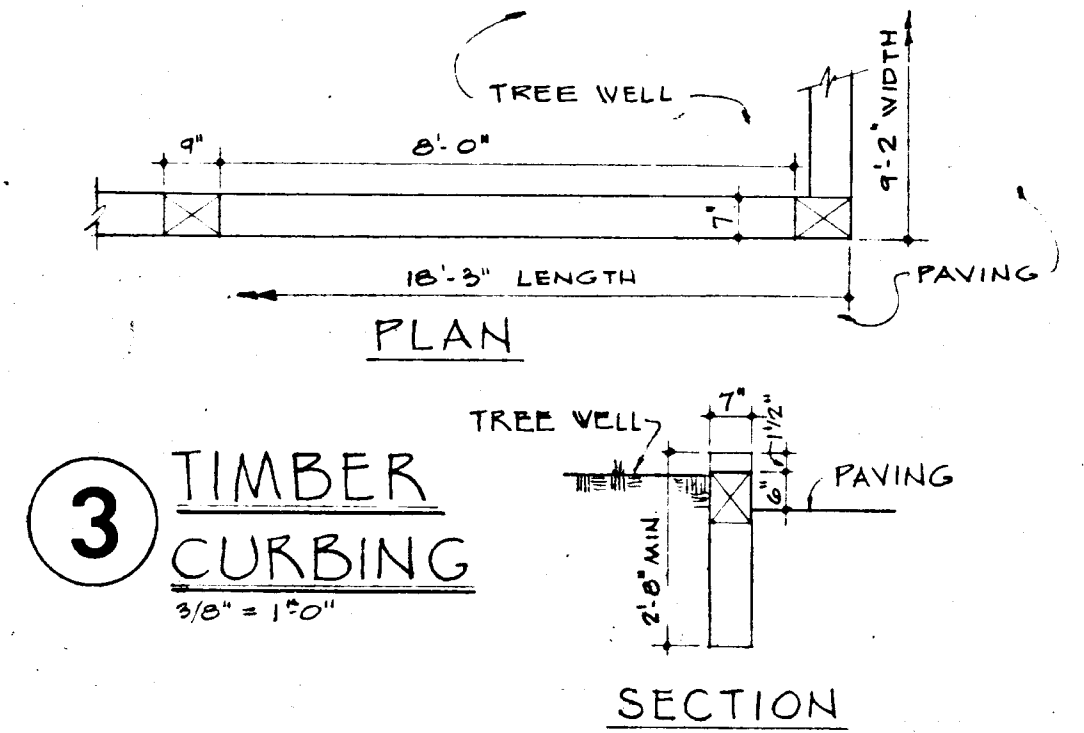
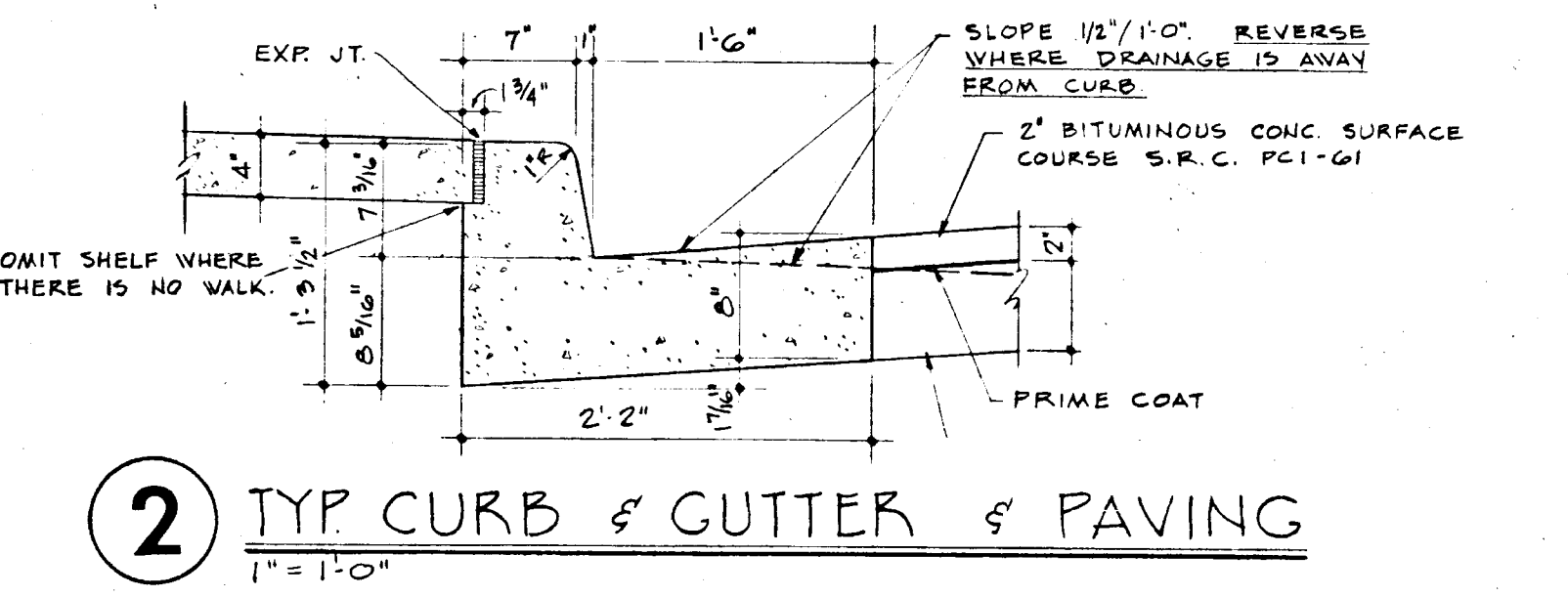
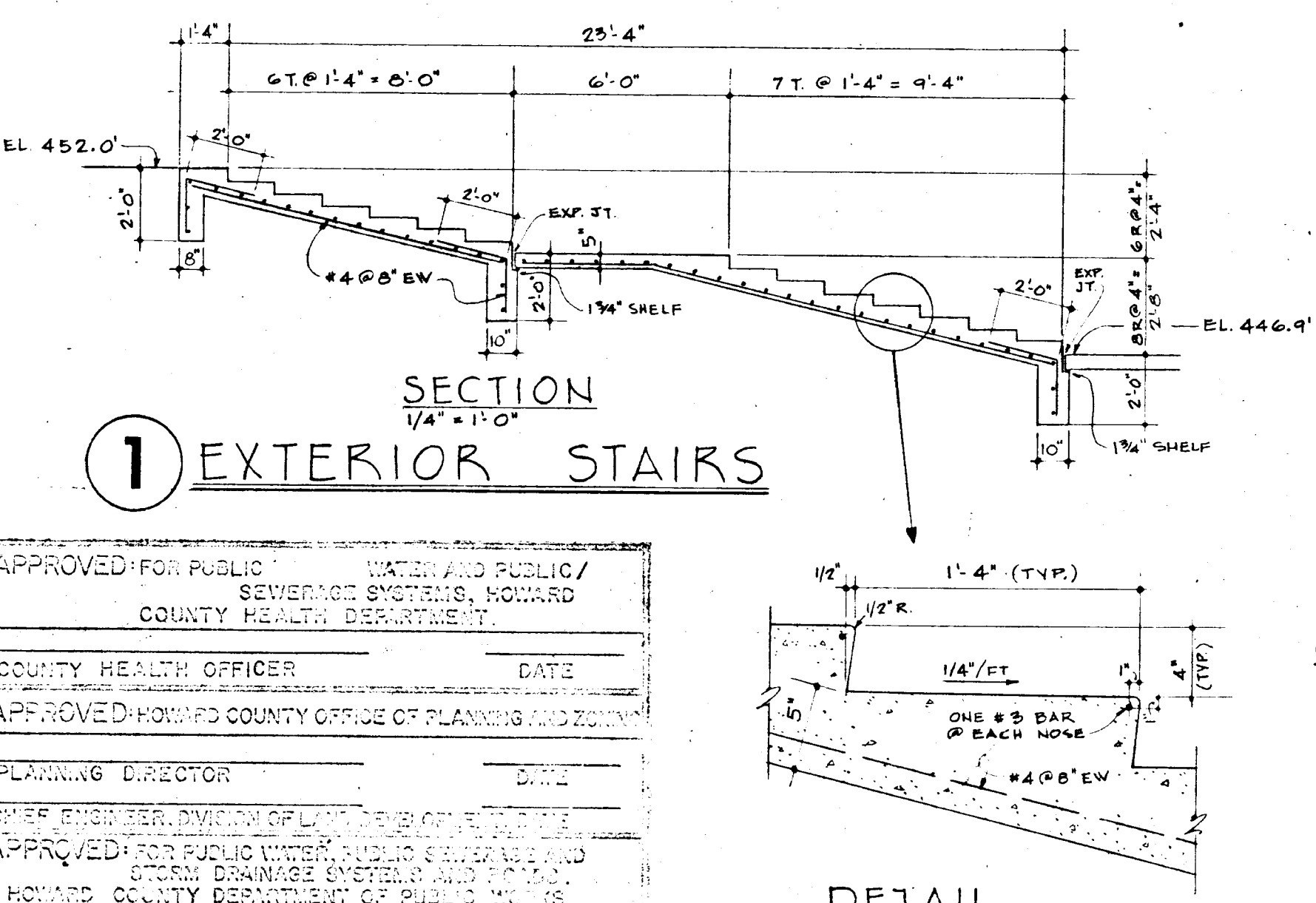
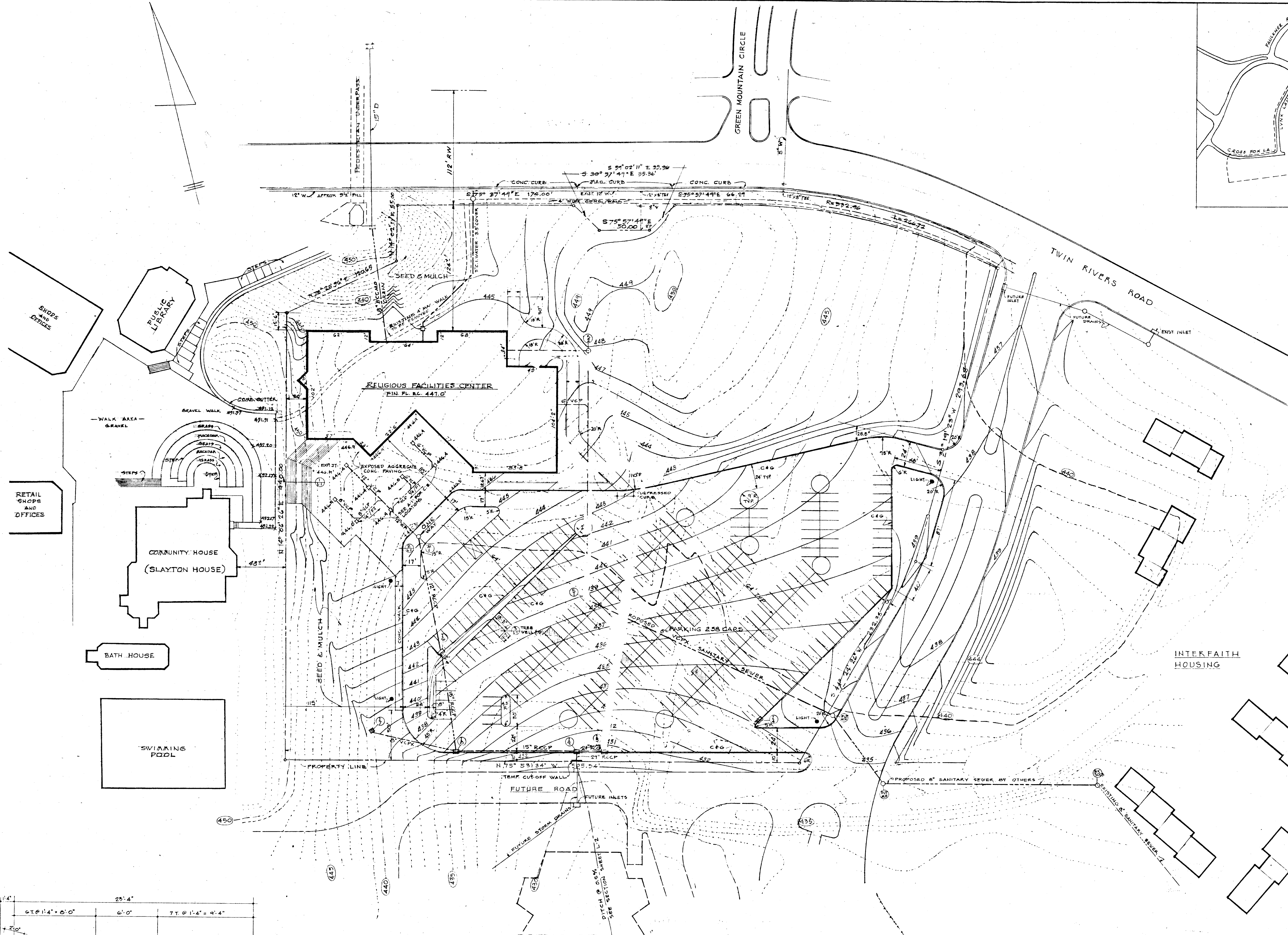
VICINITY MAP
SCALE 1"=400'

LEGEND

- (445)--- EXISTING CONTOURS
- (437)--- PROPOSED CONTOURS
- --- STORM DRAIN
- --- WATER MAIN
- --- SANITARY SEWER
- --- CURB & GUTTER

GENERAL NOTES

1. EXISTING TOPOGRAPHY TAKEN FROM PLAN ENTITLED "TOPOGRAPHIC SURVEY COLUMBIA COOPERATIVE MINISTRY PARCEL", DATED FEB. 27, 1968, BY PURDUM & JESSOP, ENGINEERS AND LAND SURVEYORS.
2. FOR LOCATION OF UTILITY LINES AT BUILDING, SEE MECH. DWGS.
3. SEE MECH. DWGS. & ELECT. DWGS. FOR ALL WORK RELATING TO ELECTRICAL OR GAS WITHIN SITE.
4. CONTRACTOR SHALL EXCAVATE FOR AND CONFIRM THE LOCATION OF ALL EXISTING UTILITIES PRIOR TO LAYING ANY NEW PIPE.
5. CONTRACTOR IS RESPONSIBLE FOR ALL STAKE OUT WORK.
6. ALL SWALES SHALL BE DOPPED & TAMPED.
7. ALL DISTURBED TURF AREAS SHALL BE SEEDED & MULCHED. SEE 4-BEC.
8. CONSTRUCTION OF ALL UTILITIES SHALL BE IN ACCORDANCE WITH SPECIFICATIONS & DETAILS OF HOWARD COUNTY METROPOLITAN COMMISSION.
9. ALL PIPING WITHIN PAVED AREA SHALL RECEIVE FULL TRENCH COMPACTION.



APPROVED FOR PUBLIC HEALTH AND PUBLIC/SEWERAGE SYSTEMS, HOWARD COUNTY HEALTH DEPARTMENT

COUNTY HEALTH OFFICER _____ DATE _____

APPROVED HOWARD COUNTY OFFICE OF PLANNING AND ZONING

PLANNING DIRECTOR _____ DATE _____

APPROVED FOR PUBLIC UTILITIES, HOWARD COUNTY DEPARTMENT OF PUBLIC UTILITIES

DIRECTOR _____ DATE _____

CHIEF, BUREAU OF HIGHWAYS _____ DATE _____

SITE DEVELOPMENT PLAN

COLUMBIA RELIGIOUS FACILITIES CENTER, THE VILLAGE OF WILDE LAKE, COLUMBIA, MARYLAND

HUYGENS AND TAPPE INC. BOSTON AND GAUDREAU INC. BALTIMORE ASSOCIATED ARCHITECTS FOR THE COLUMBIA RELIGIOUS FACILITIES

SCALE: 1"=40'-0"

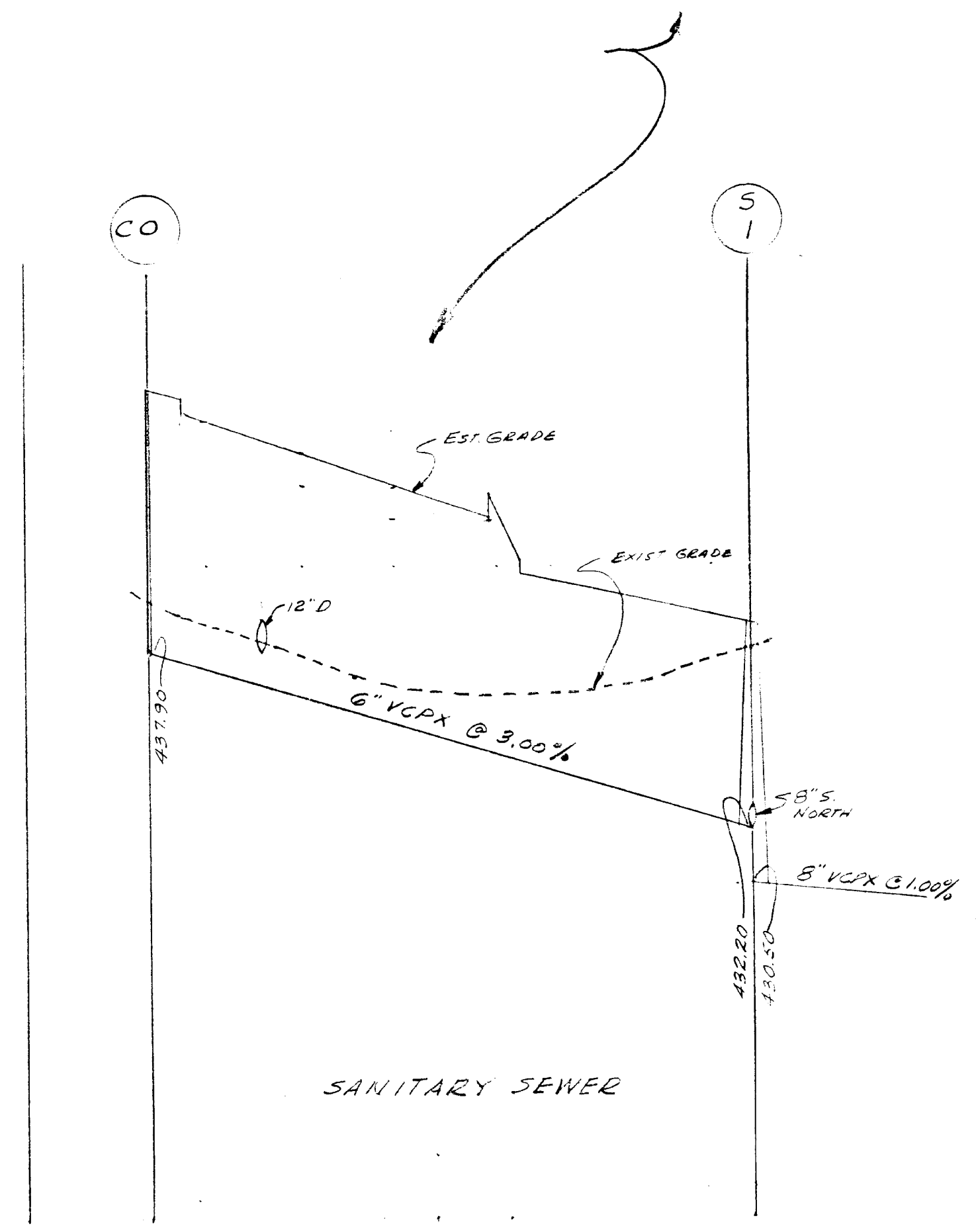
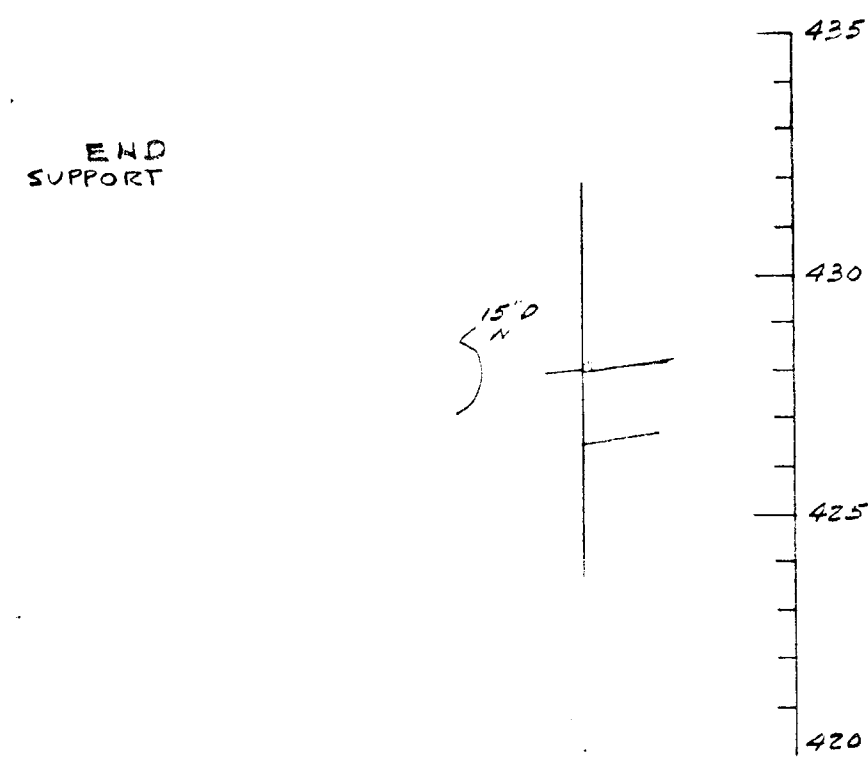
DATE: 18 MAY 69

L-1

4A	COMB.	431.80	428.09	427.84	16"	1.68
				46		96

END SUPPORT

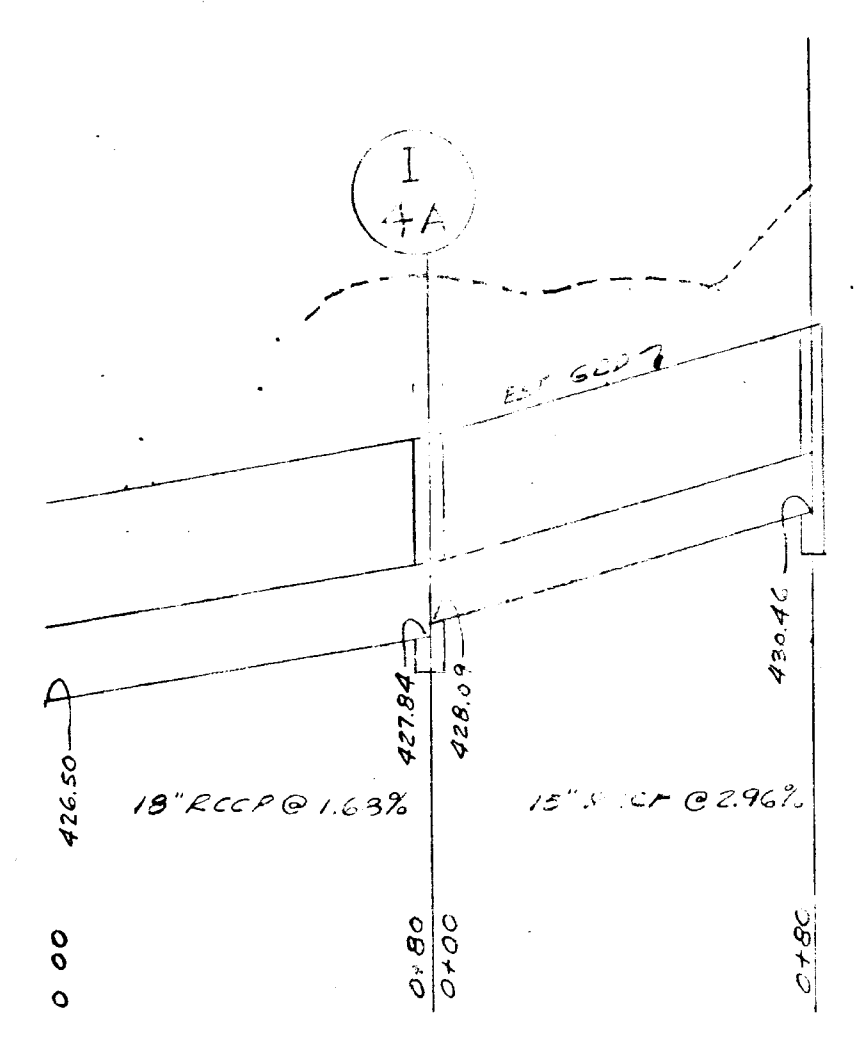
63-50



63-50

68"

OMIT



GAUDREAU, INC.

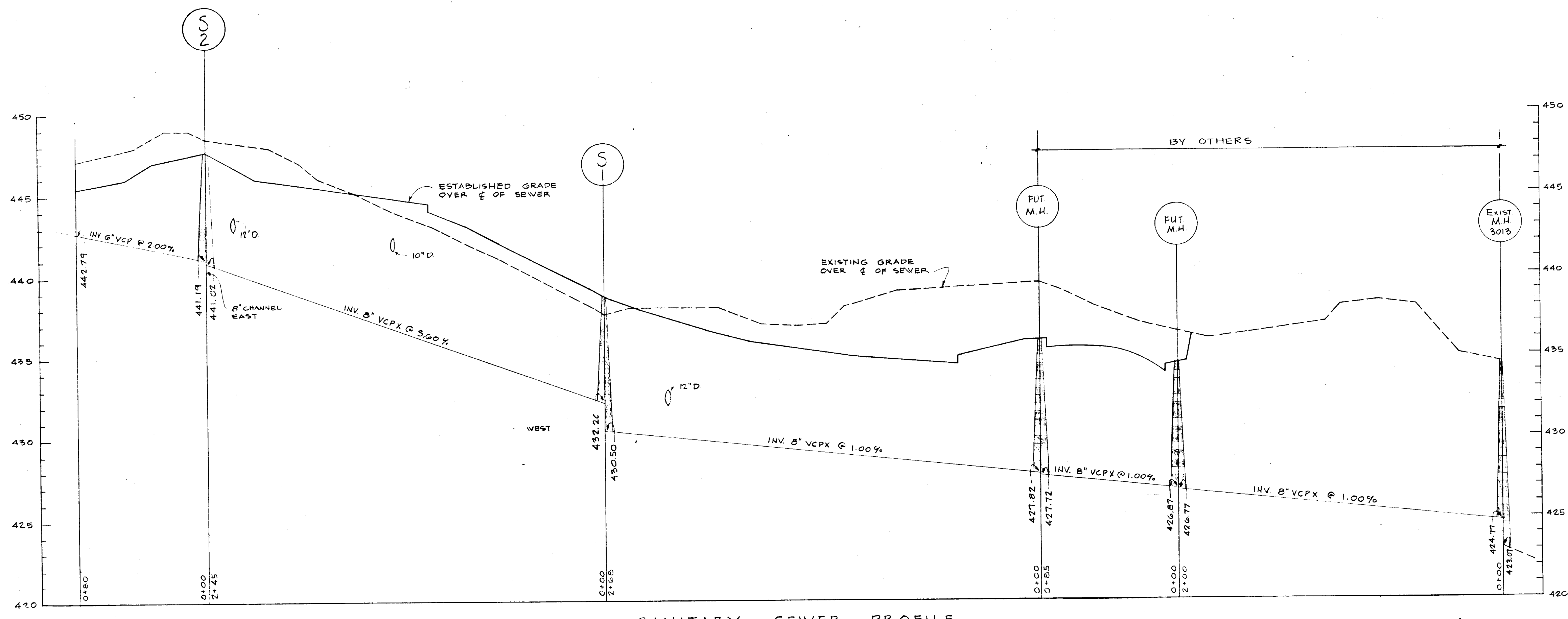
Robert D. White
PE 1155

APPROVED
DATE 9-3-69
JAC

APPROVED
DATE 8-22-69
JWJ

REV. 24 June 69
REV. 23 July 69

SD-10-11

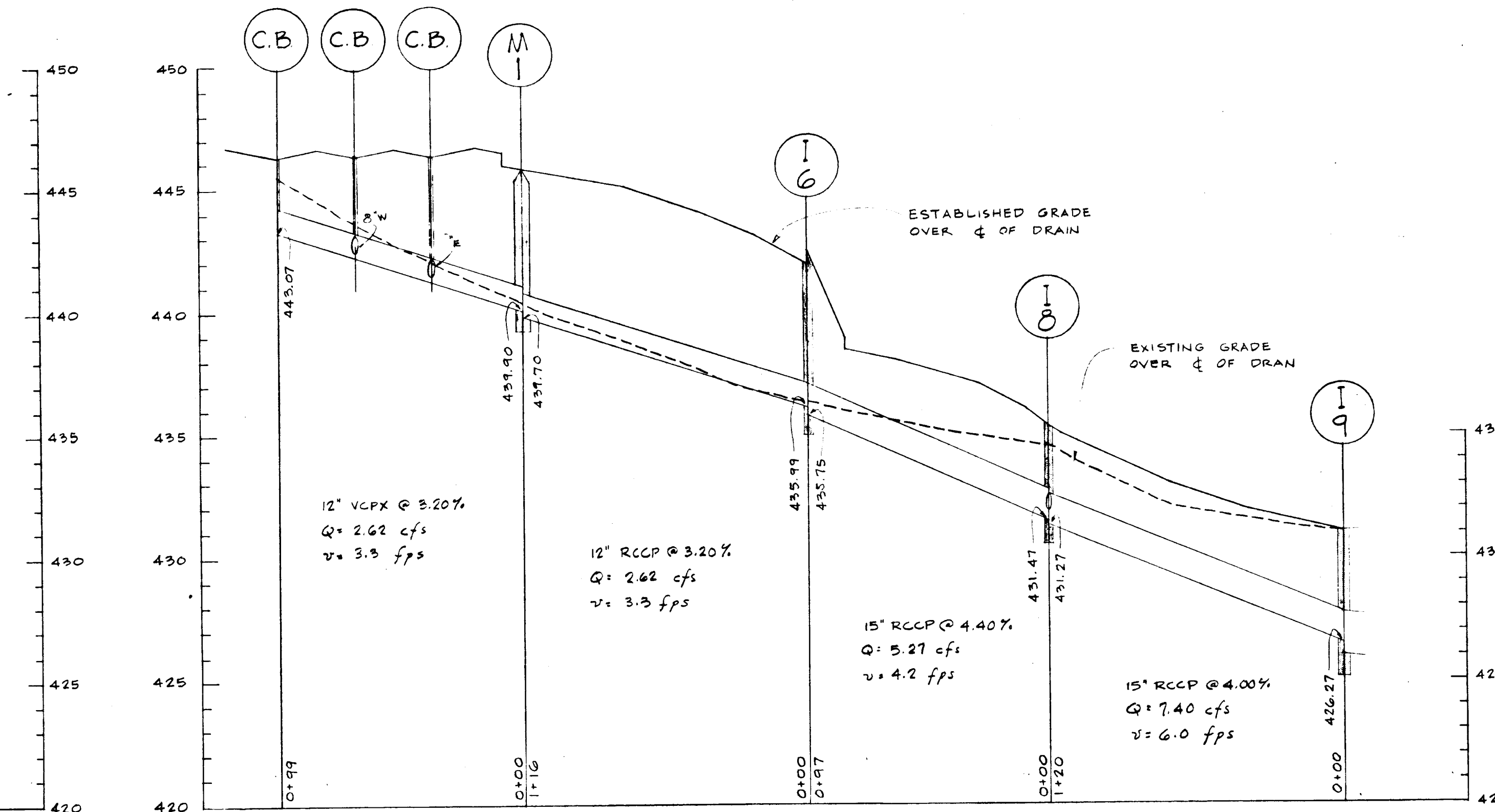
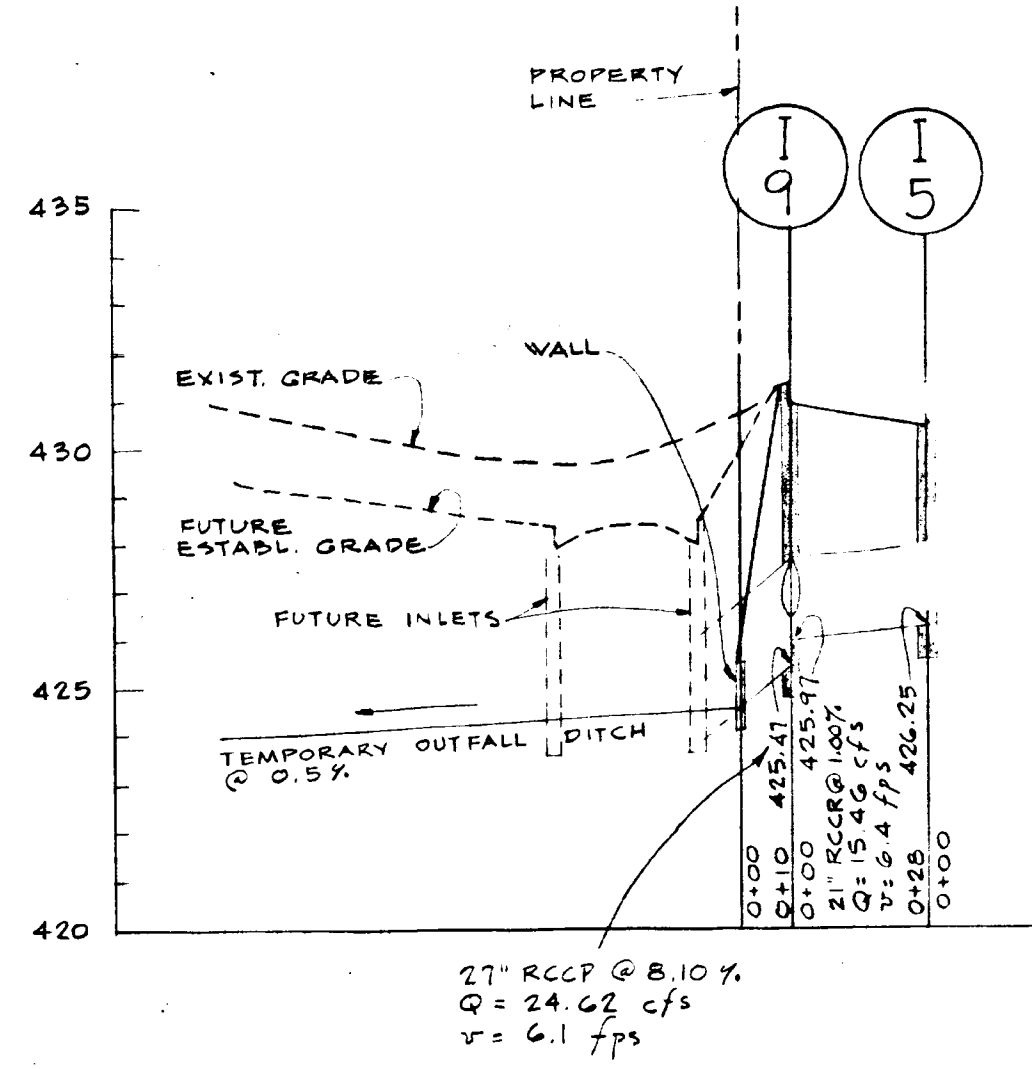
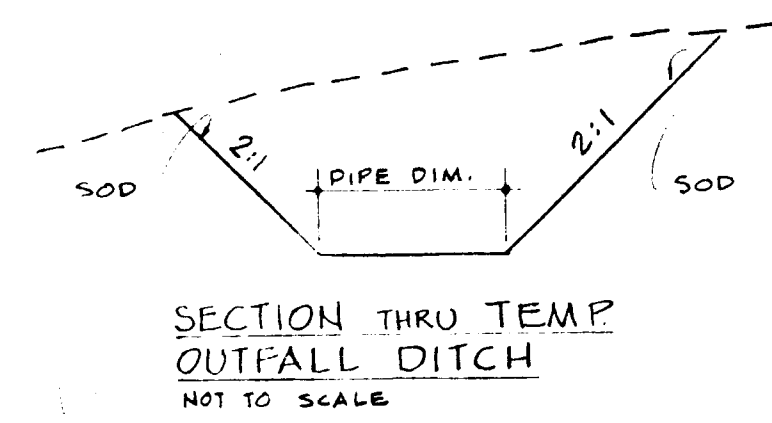


SANITARY SEWER PROFILE

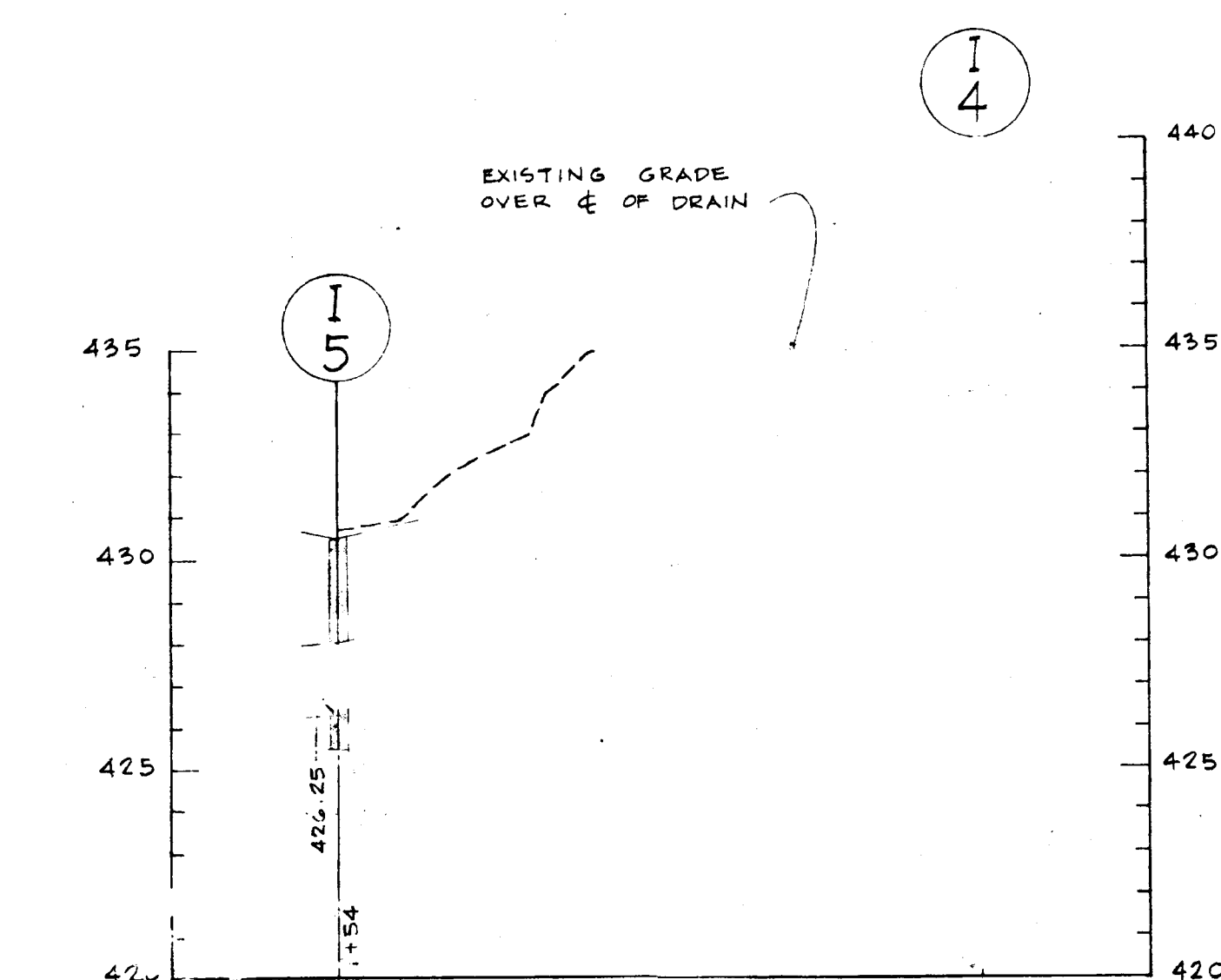
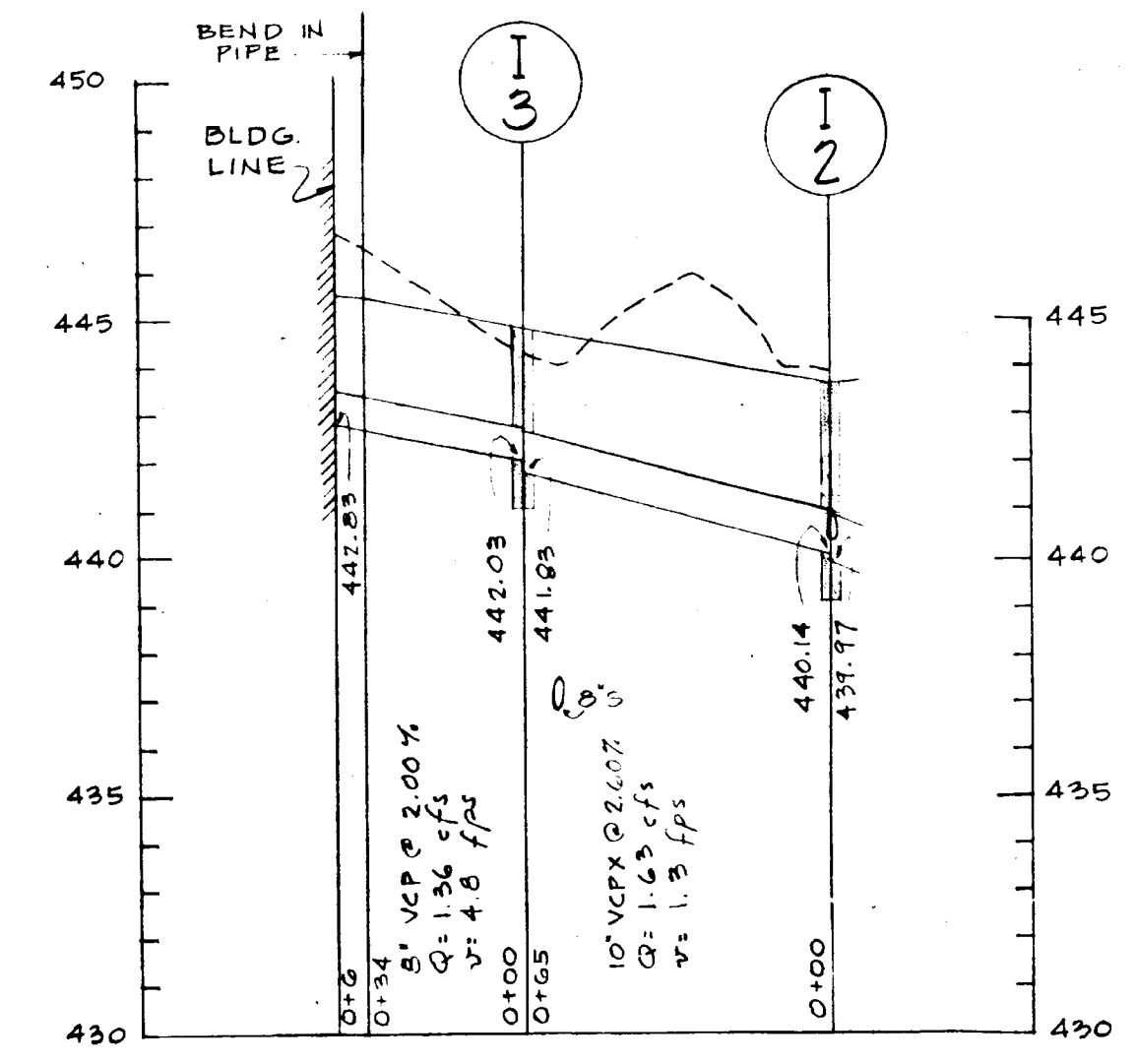
SANITARY SEWER CONSTRUCTION DATA				
No.	TOP ELEV.	INV. IN.	INV. OUT.	% GRADE OUT
S-1	438.5'	432.20'	430.50'	1.00
S-2	447.5'	441.19'	441.02'	3.00

STORM DRAIN CONSTRUCTION DATA						
No.	TYPE	TOP ELEV. #	INV. IN.	INV. OUT.	PIPE SIZE OUT	% GRADE OUT
I-1	5" INLET	446.50	443.10	442.90	8"	2.10
I-2	5" INLET	443.50	442.32'-8"	439.77	12"	4.60
I-3	5"	-	-	-	-	-
I-4	5" COMB.	434.10	-	430	15"	2
I-5	5" COMB.	430.70	427.00'-8"	426.25	21"	1.00
I-6	5" COMB.	442.00	435.99	435.75	15"	4.40
I-7	5" INLET	440.20	-	437.29	8"	6.40
I-8	5" COMB.	435.40	431.27'-15"	431.27	15"	4.00
I-9	5" COMB.	431.00	425.97	425.47	21"	8.10
M-1	A-1	445.10	439.90	439.70	12"	3.20
END WALL	WALL	-	-	-	-	0.50
B.C.B.	**	SEE PLAN	SEE PLAN	SEE PLAN	SEE PLAN	SEE PLAN

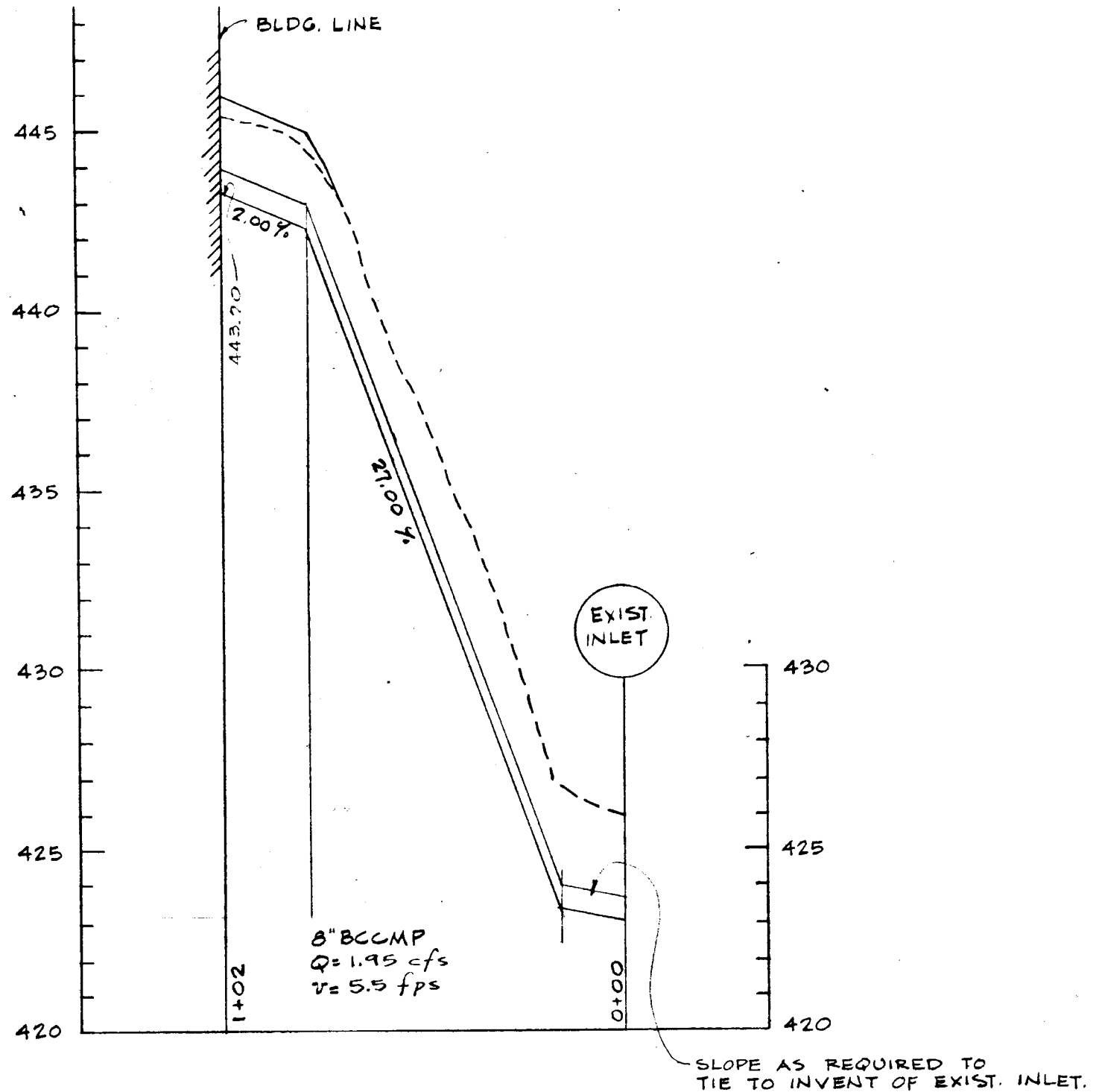
TO BE VERIFIED IN FIELD
 * * * EACH C.B. BY WADE MANUFACTURING COMPANY
 CAT. # W1480-F, OR APPROVED EQUAL.



STORM DRAIN PROFILES



STORM DRAIN PROFILES



SCALE:
 HORIZONTAL: 1"=40'
 VERTICAL: 1"=4'

UTILITIES' PROFILES	DATE: 12 MAY 69
COLUMBIA RELIGIOUS FACILITIES CENTER THE VILLAGE OF WILDE LAKE, COLUMBIA, MARYLAND HUYGENS AND TAPPE' INC. BOSTON AND GAUDREAU INC. BALTIMORE ASSOCIATED ARCHITECTS FOR THE COLUMBIA RELIGIOUS FACILITIES	
L-2	

3011 01-11 15/000000 1/1/69
 ART. 2/11/69