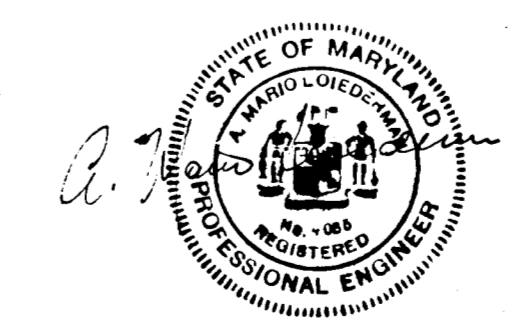


DEPARTMENT OF PUBLIC WORKS
Granville N. Wehrand 7-8-69
 CHIEF SURVEYOR OF PUBLIC WORKS DATE
 OFFICE OF PLANNING AND ZONING
J. H. Clawson 7-15-69
 ENGINEER OF PUBLIC DEVELOPMENT DATE

STRUCTURE COORDINATES

STR. NO.	NORTH	EAST
1	805,075.41	855,804.16
2	805,800.71	855,825.04
3	805,834.27	855,855.08
4	805,774.81	855,884.02
5	805,742.53	855,851.82
6	805,658.16	855,825.07
7	805,517.54	855,825.55
8	805,571.28	855,820.77

APPROVED
 DIVISION OF
 LAND DEVELOPMENT
 OFFICE OF
 PLANNING AND ZONING
 OF HOWARD COUNTY
 DATE 7-15-69



MATZ, CHILDS & ASSOCIATES
 CONSULTING ENGINEERS
 822 N. STONE STREET AVENUE
 ROCKVILLE, MARYLAND

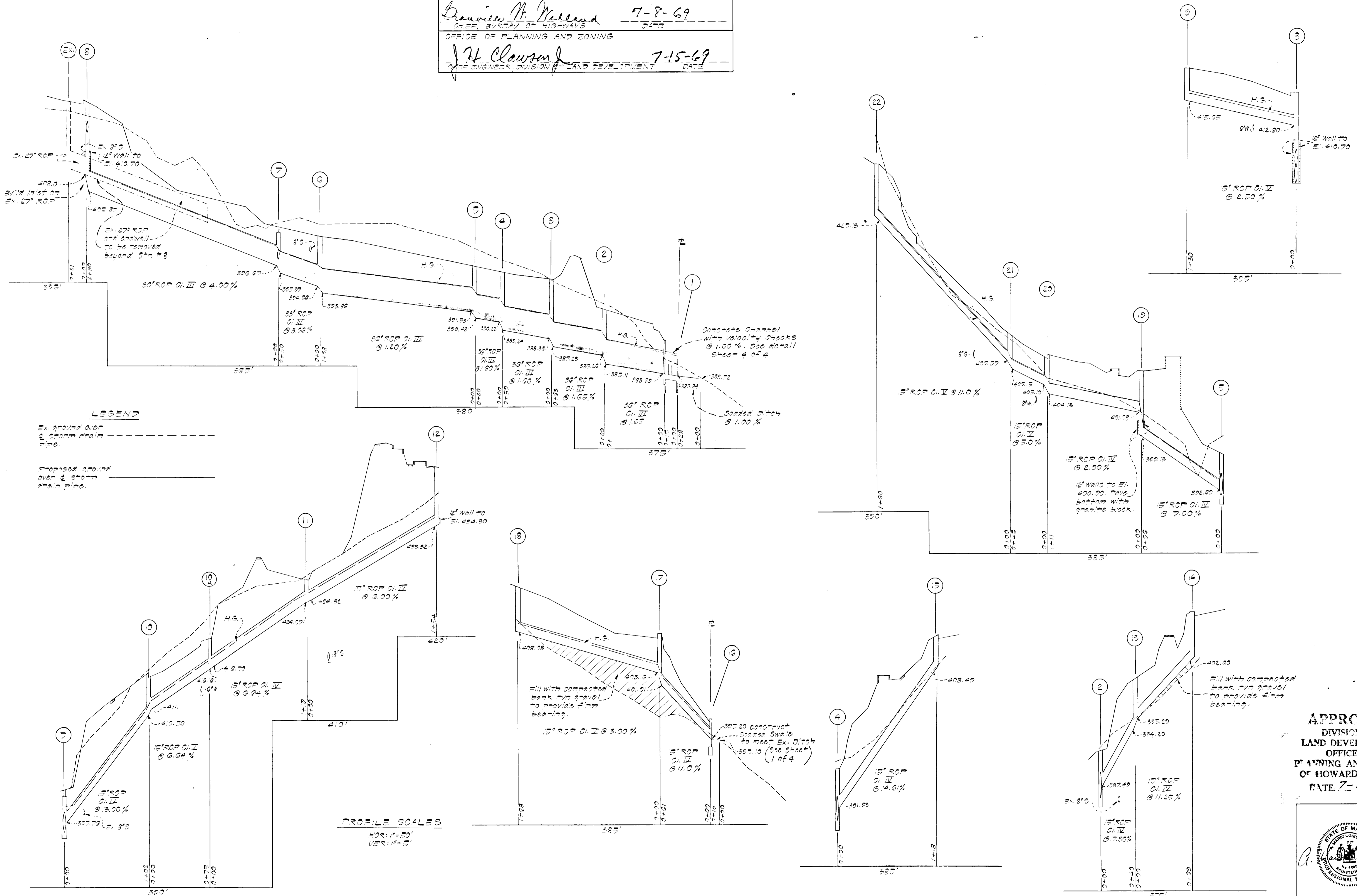
STORM DRAIN PLAN

REVISIONS	SITE PLAN	JOB NO.
7 JAN 69	COHEN, HAFT, A. I. A., & ASSOCIATES DAVID A. HOLTZ, A. I. A., ASSOCIATE ARCHITECTS & PLANNERS 814 THAYER AVENUE, SILVER SPRING, MD.	140-66
	WELLS, LESTER THE TOWNE APARTMENTS AT COLUMBIA HOWARD COUNTY, MARYLAND	SHEET NO. 1
NOTE: CONTRACTOR VERIFY ALL DIMENSIONS AND CONDITIONS AT BUILDING		OF 6
DRAWN BY: [Signature] APPROVED: [Signature] DATE: 07-15-69 FILE NO. [Blank]		

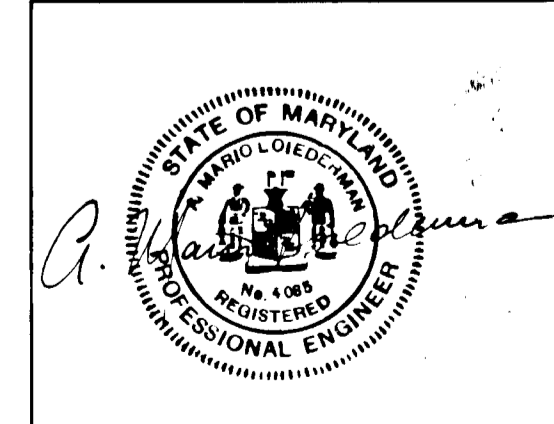
SDP-69-06



DEPARTMENT OF PUBLIC WORKS
Lawrence M. McLeod 7-8-69
 CHIEF, BUREAU OF HIGHWAYS
 OFFICE OF PLANNING AND ZONING
J. H. Clawson 7-15-69
 CHIEF ENGINEER, DIVISION OF LAND DEVELOPMENT



APPROVED
 DIVISION OF
 LAND DEVELOPMENT
 OFFICE OF
 PLANNING AND ZONING
 OF HOWARD COUNTY
 DATE: 7-15-69



Drafting	DATE	REVISIONS
Check	7-15-69	Revised profiles to per arch notes
Design	7-15-69	Final site plan (Prop. Ground)
Check	7-15-69	Added final Sew. & Water crossings

MCA
 MATZ, CHILDS & ASSOCIATES OF ROCKVILLE
 CONSULTING ENGINEERS
 322 NORTH STONESTREET AVENUE
 ROCKVILLE, MARYLAND 20850
 TELEPHONE 762-5533 AREA CODE 301

OWNER & DEVELOPER

STORM DRAIN PLAN

THE TOWNE APARTMENTS VWL 10/1, LOT 1
 AT COLUMBIA
 HOWARD COUNTY, MARYLAND 50P-69-06

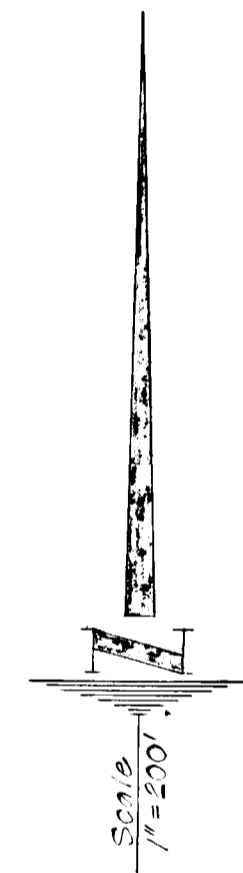
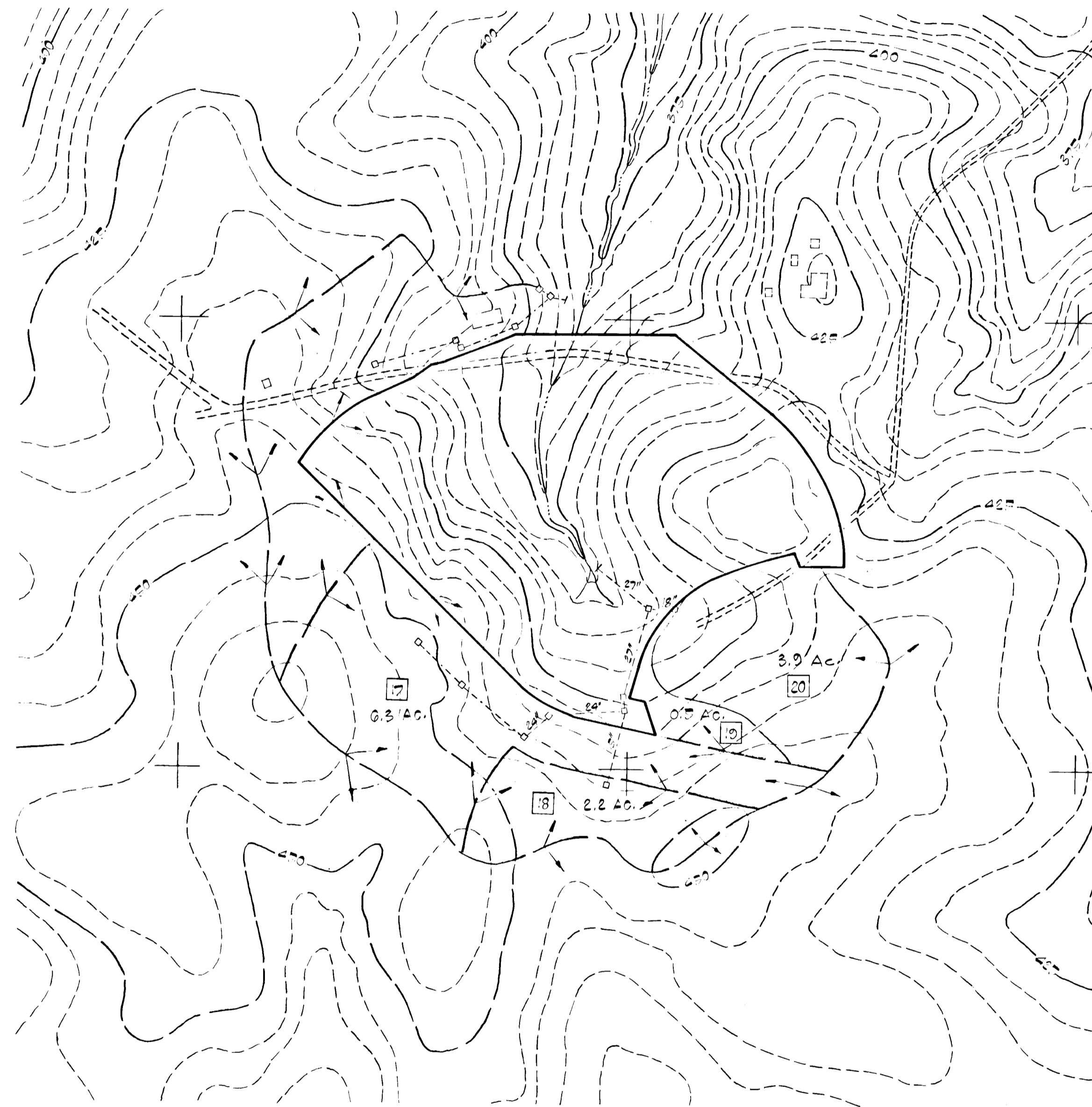
Sheet	DATE	JOB
2 of 6	FEB. 1969	NUMBER
	SCALE AS SHOWN	08-07G

Drainage Area Map 7-15-69

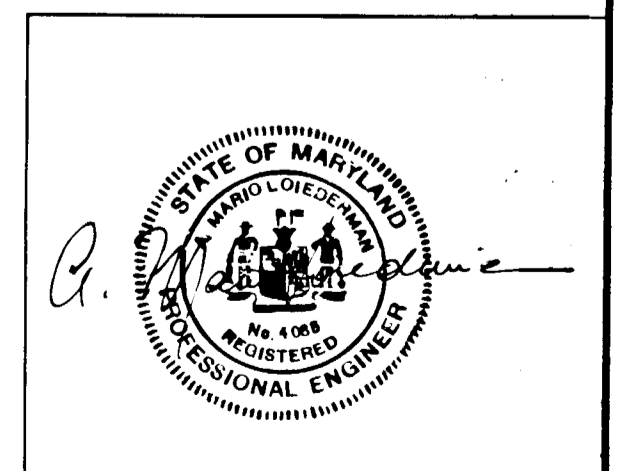
GENERAL NOTES

1. Contractor is to take care during grading operations to prevent silt overflow and/or damage to adjacent properties.
2. Contractor is to connect all rain leaders to proper storm drain systems if required under this contract.
3. Do not use this plan for stake out of buildings or parking lot.
4. Public water and sewer available within this subdivision.
5. All on site roadways to conform to Howard Co. Std. 34, page 30.
6. All storm drains not located in easements will be privately owned and maintained.

STRUCTURE SCHEDULE				
No.	Type	Size	Top Elevation	Bottom Elevation
1	'0" Endwall	30"	397.40	
2	Std. Manhole		391.70	
3	'0" Inlet		393.40	
4	Std. Manhole		396.50	
5	Std. Manhole		398.00	
6	'0" Inlet		400.00	
7	Std. Manhole		401.80	
8	Double 'S' Inlet		416.50	
9	'S' Comb. Inlet		419.75	419.03
10	'S' Comb. Inlet		415.00	415.30
11	'0" Inlet		428.50	
12	Double 'S' Inlet		440.40	
13	'0" Inlet		400.40	
14	Double 'S' Inlet		408.40	
15	Double 'S' Inlet		412.50	
16	'0" Endwall	15"	397.70	
17	Double 'S' Inlet		407.00	
18	'S' Comb. Inlet		413.70	413.42
19	Double 'S' Inlet		407.00	
20	'S' Comb. Inlet		408.00	408.32
21	'S' Comb. Inlet		412.00	411.30
22	'0" Inlet		432.00	
10 A	Std. Manhole		419.80	



DEPARTMENT OF PUBLIC WORKS
Draville W. Weiland 7-8-69
 CHIEF, BUREAU OF HIGHWAYS
 OFFICE OF PLANNING AND ZONING
V. H. Clouston 7-15-69
 CHIEF ENGINEER, DIVISION OF LAND DEVELOPMENT



Drafting	DATE	REVISIONS
Check	7-15-69	Added top of Str. 3, 2
Design		
Check		

MCA
 MATZ, CHILDS & ASSOCIATES OF ROCKVILLE
 CONSULTING ENGINEERS
 322 NORTH STONESTREET AVENUE
 ROCKVILLE, MARYLAND 20850
 TELEPHONE 762-5533 AREA CODE 301

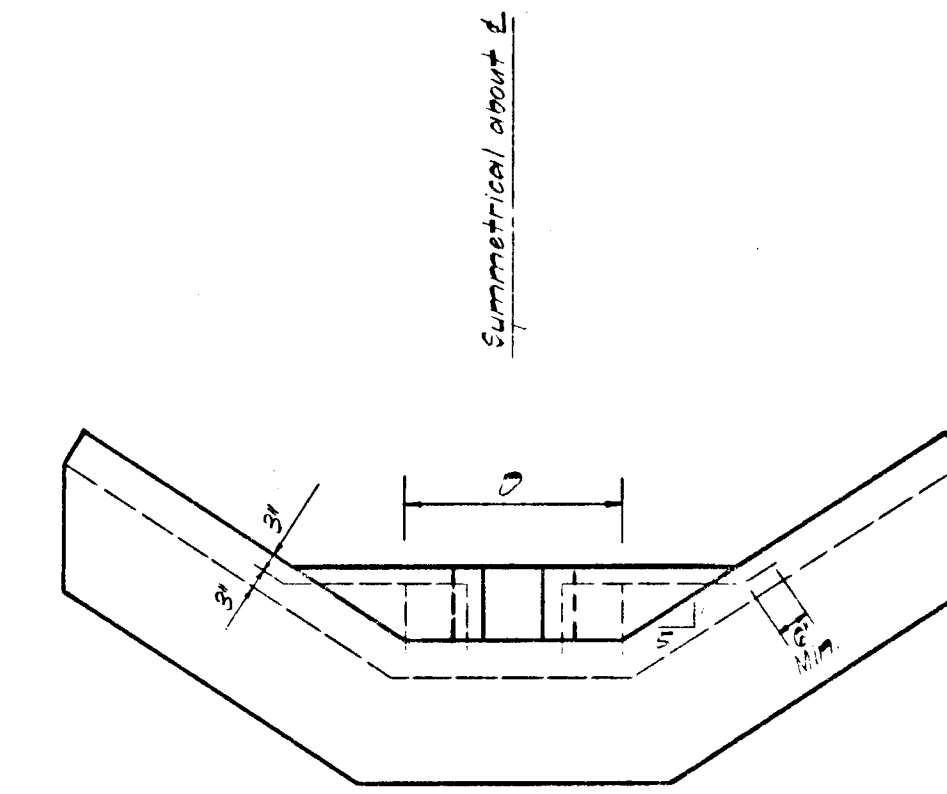
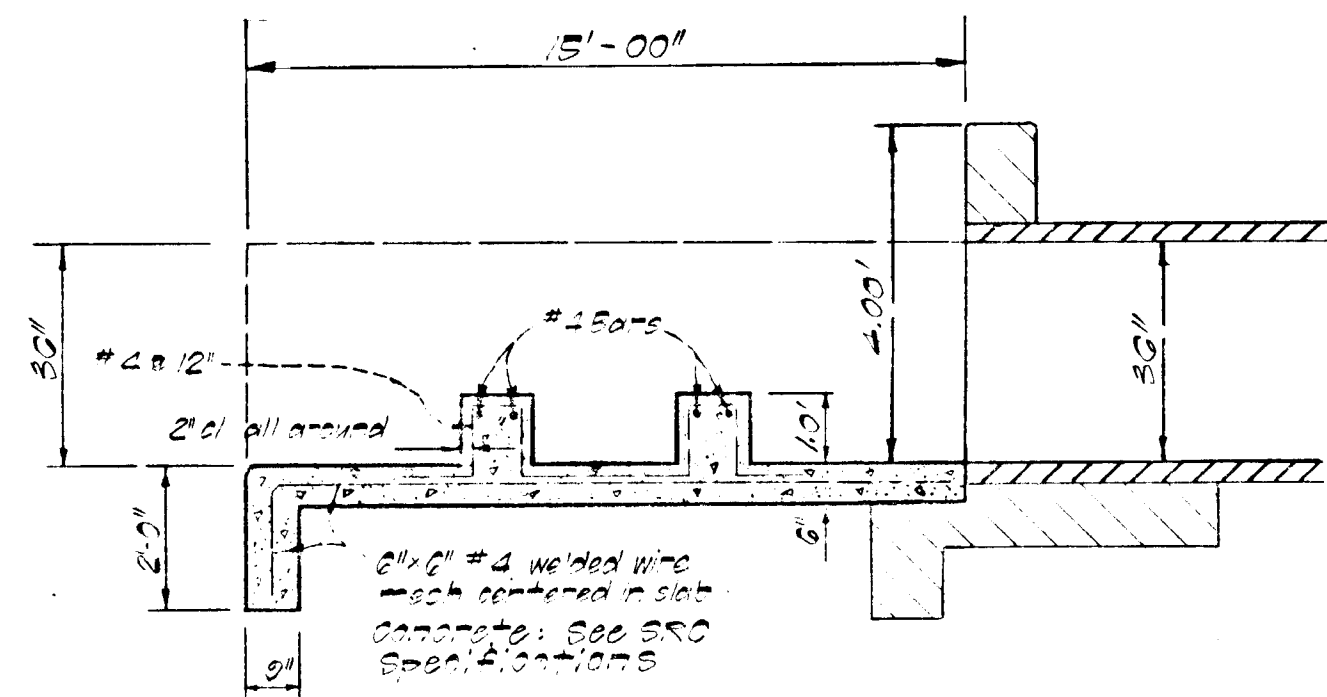
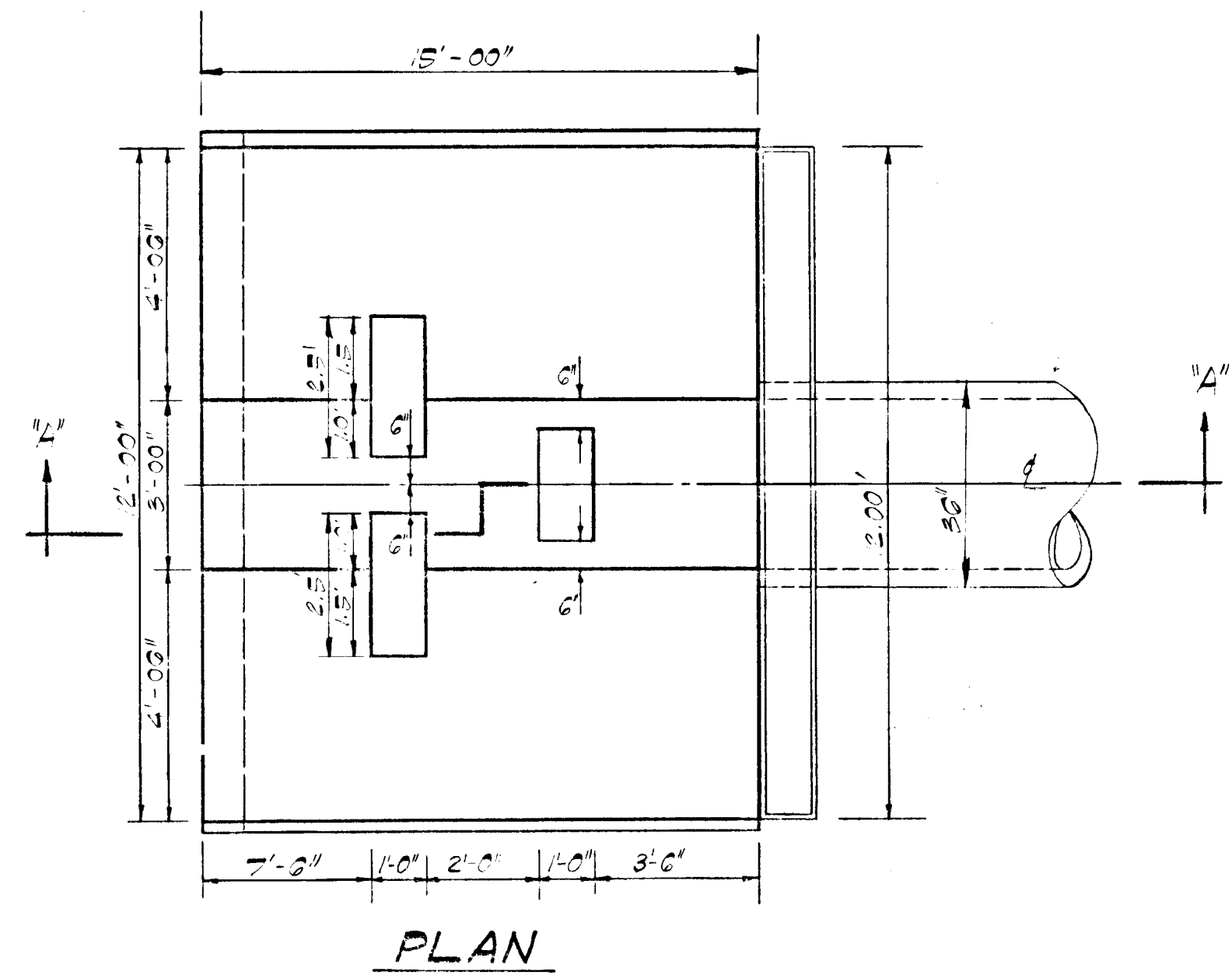
OWNER & DEVELOPER

DRAINAGE AREA MAP

THE TOWNE APARTMENTS
 AT COLUMBIA
 HOWARD COUNTY, MARYLAND

SDP-69-06
 VWL, 10/1, LOT 1

Sheet 5 of 6	DATE FEB. 1969	JOB NUMBER 28-076
	SCALE 1" = 200'	



PLAN

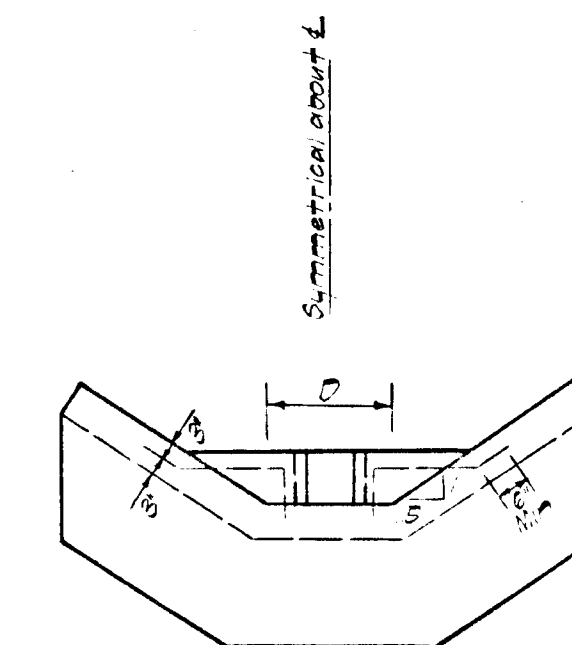
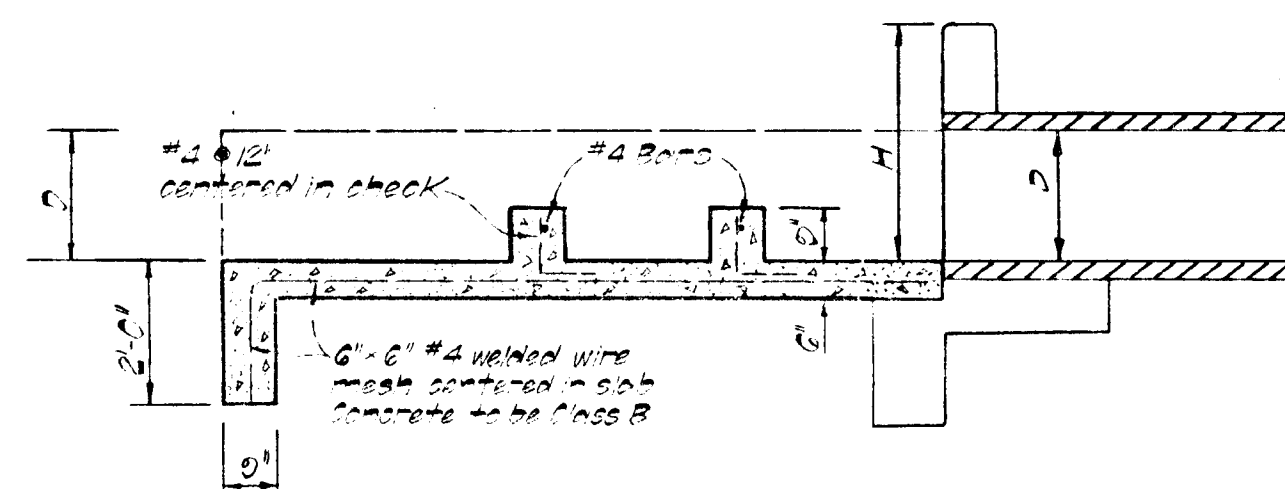
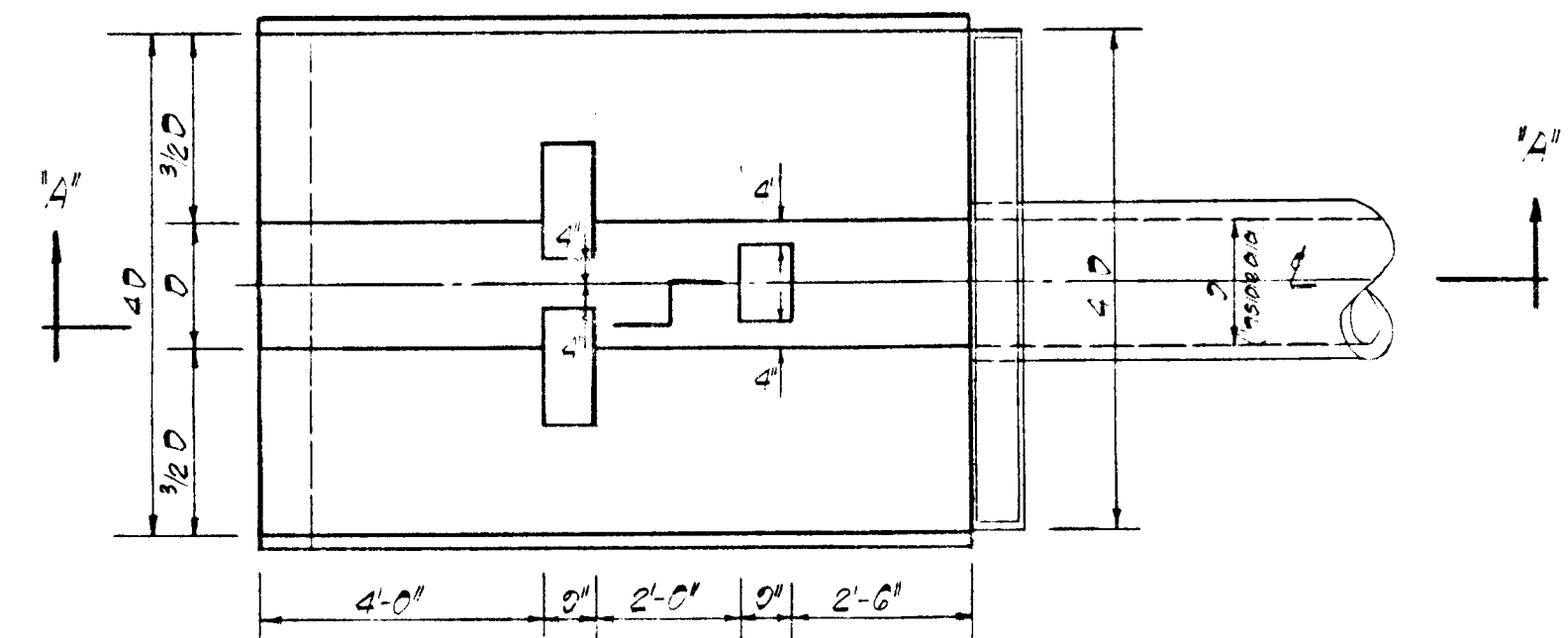
SECTION "A-A"

FRONT ELEVATION

STRUCTURE 1
36" RCP

VELOCITY CHECK FOR 27" THRU 48" PIPES

NOTE: For details of endwall not shown See WSSC Detail No. G0743-L.



PLAN

SECTION "A-A"

FRONT ELEVATION

VELOCITY CHECK FOR 15" THRU 24" PIPES

NOTE: For details of endwall not shown See WSSC Detail No. G0743-L.

NOT APPLICABLE

DEPARTMENT OF PUBLIC WORKS	
Granville W. Nebelund	7-8-69
CHIEF ENGINEER OF HIGHWAYS	DATE
OFFICE OF PLANNING AND DESIGN	
J. H. Clouse	7-15-69
CHIEF ENGINEER OF LAND DEVELOPMENT	DATE
Revised	REVISIONS
Drawn	
Check	
Design	
Check	

MCA
MATZ, CHILDS & ASSOCIATES OF ROCKVILLE, INC.
CONSULTING ENGINEERS
322 NORTH STONESTREET
ROCKVILLE, MARYLAND 20850
TELEPHONE 762-5533 AREA CODE 301

OWNER & DEVELOPER

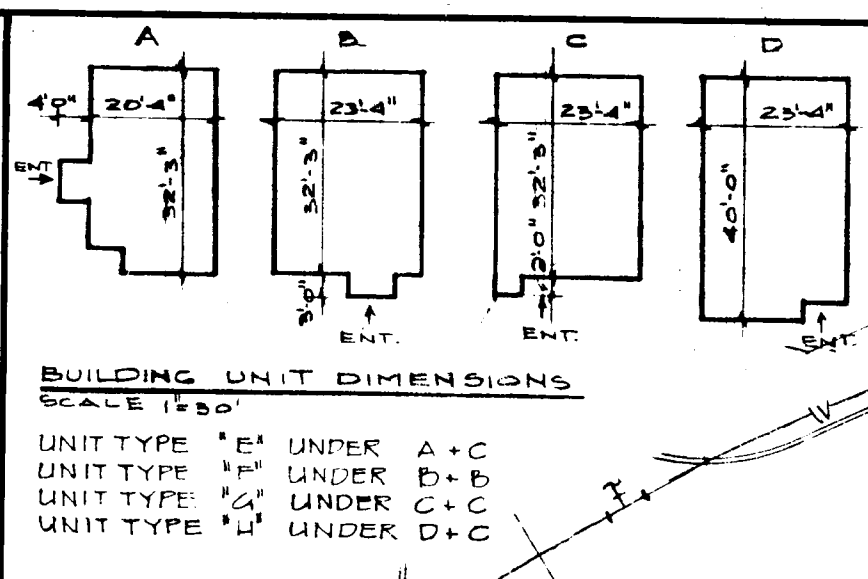
DETAILS

THE TOWNE APARTMENTS
AT COLUMBIA
HOWARD COUNTY, MARYLAND

SDP-69-06
VWL, 10/1, LOT 1

Sheet 4 of 6	DATE FEB. 1969 SCALE NOT TO SCALE	JOB NUMBER 08-070
-----------------------	--	-------------------------

SDP-69-06



FALKNER RIDGE - PLAT BOOK 12 FOLIO 35

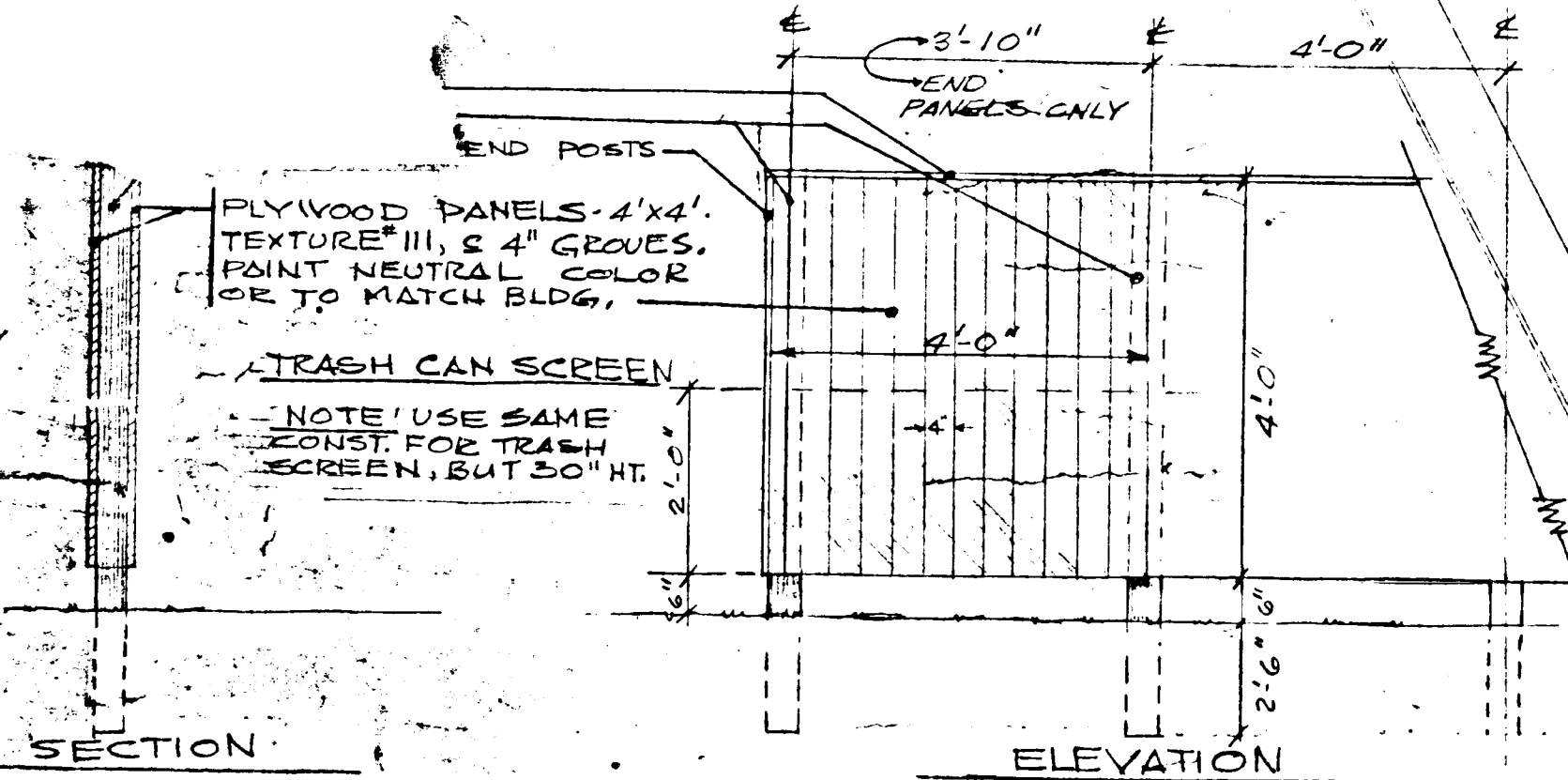
1. ON SITE ROADS WILL NOT BE DEDICATED TO THE COUNTY.
2. ON SITE A WAYS TO CONFORM TO HOWARD CO. ST. 7-14 PAGE 53.
3. ON SITE CURBS AND COMBINATION CURB AND CURBS SHALL CONFORM TO HOWARD CO. ST. 140 PAGE 95.
4. ACCESS WALLS AND SIDEWALKS SHALL CONFORM TO HOWARD CO. ST. 7-14 PAGE 69. SIDEWALKS ADJACENT TO A DRIVEABLE PARKING SPACE SHALL BE 5' WIDE. CURBS SHALL BE 4" HIGH.
5. ST. PAVEMENT AND EROSION CONTROL SHALL CONFORM TO THE PROVISIONS CONTAINED IN LETTER C-17, FEB. 7, 1969 FROM THE HOWARD COUNTY BOARD OF PUBLIC WORKS TO THE HOWARD COUNTY PLANNING COMMISSION. THE CONTRACTOR SHALL PERFORM ALL THE NECESSARY WORK TO PROVIDE C-17 AS APPLICABLE IN THIS LETTER. PARTICULAR ATTENTION IS DIRECTED TO PARAGRAPHS AS CITED IN THIS LETTER.

UNIT	COUNT
1	1
2	2
3	3
4	4
5	5
6	6
7	7
8	8
9	9
10	10
11	11
12	12
13	13
14	14
15	15
16	16
17	17
18	18
19	19
20	20
21	21
22	22
23	23
24	24
25	25
26	26
27	27
28	28
29	29
30	30
31	31
32	32
33	33
34	34
35	35
36	36
37	37
38	38
39	39
40	40
41	41
42	42
43	43
44	44
45	45
46	46
47	47
48	48
49	49
50	50
51	51
52	52
53	53
54	54
55	55
56	56
57	57
58	58
59	59
60	60
61	61
62	62
63	63
64	64
65	65
66	66
67	67
68	68
69	69
70	70
71	71
72	72
73	73
74	74
75	75
76	76
77	77
78	78
79	79
80	80
81	81
82	82
83	83
84	84
85	85
86	86
87	87
88	88
89	89
90	90
91	91
92	92
93	93
94	94
95	95
96	96
97	97
98	98
99	99
100	100

No.	TYPE	SIZE	ELEVATION
1	"A" MANHOLE	36"	
2	"B" MANHOLE	36"	
3	"C" MANHOLE	36"	
4	"D" MANHOLE	36"	
5	"E" MANHOLE	36"	
6	"F" MANHOLE	36"	
7	"G" MANHOLE	36"	
8	"H" MANHOLE	36"	
9	"I" MANHOLE	36"	
10	"J" MANHOLE	36"	
11	"K" MANHOLE	36"	
12	"L" MANHOLE	36"	
13	"M" MANHOLE	36"	
14	"N" MANHOLE	36"	
15	"O" MANHOLE	36"	
16	"P" MANHOLE	36"	
17	"Q" MANHOLE	36"	
18	"R" MANHOLE	36"	
19	"S" MANHOLE	36"	
20	"T" MANHOLE	36"	
21	"U" MANHOLE	36"	
22	"V" MANHOLE	36"	
23	"W" MANHOLE	36"	
24	"X" MANHOLE	36"	
25	"Y" MANHOLE	36"	
26	"Z" MANHOLE	36"	
27	"AA" MANHOLE	36"	
28	"AB" MANHOLE	36"	
29	"AC" MANHOLE	36"	
30	"AD" MANHOLE	36"	
31	"AE" MANHOLE	36"	
32	"AF" MANHOLE	36"	
33	"AG" MANHOLE	36"	
34	"AH" MANHOLE	36"	
35	"AI" MANHOLE	36"	
36	"AJ" MANHOLE	36"	
37	"AK" MANHOLE	36"	
38	"AL" MANHOLE	36"	
39	"AM" MANHOLE	36"	
40	"AN" MANHOLE	36"	
41	"AO" MANHOLE	36"	
42	"AP" MANHOLE	36"	
43	"AQ" MANHOLE	36"	
44	"AR" MANHOLE	36"	
45	"AS" MANHOLE	36"	
46	"AT" MANHOLE	36"	
47	"AU" MANHOLE	36"	
48	"AV" MANHOLE	36"	
49	"AW" MANHOLE	36"	
50	"AX" MANHOLE	36"	
51	"AY" MANHOLE	36"	
52	"AZ" MANHOLE	36"	
53	"BA" MANHOLE	36"	
54	"BB" MANHOLE	36"	
55	"BC" MANHOLE	36"	
56	"BD" MANHOLE	36"	
57	"BE" MANHOLE	36"	
58	"BF" MANHOLE	36"	
59	"BG" MANHOLE	36"	
60	"BH" MANHOLE	36"	
61	"BI" MANHOLE	36"	
62	"BJ" MANHOLE	36"	
63	"BK" MANHOLE	36"	
64	"BL" MANHOLE	36"	
65	"BM" MANHOLE	36"	
66	"BN" MANHOLE	36"	
67	"BO" MANHOLE	36"	
68	"BP" MANHOLE	36"	
69	"BQ" MANHOLE	36"	
70	"BR" MANHOLE	36"	
71	"BS" MANHOLE	36"	
72	"BT" MANHOLE	36"	
73	"BU" MANHOLE	36"	
74	"BV" MANHOLE	36"	
75	"BW" MANHOLE	36"	
76	"BX" MANHOLE	36"	
77	"BY" MANHOLE	36"	
78	"BZ" MANHOLE	36"	
79	"CA" MANHOLE	36"	
80	"CB" MANHOLE	36"	
81	"CC" MANHOLE	36"	
82	"CD" MANHOLE	36"	
83	"CE" MANHOLE	36"	
84	"CF" MANHOLE	36"	
85	"CG" MANHOLE	36"	
86	"CH" MANHOLE	36"	
87	"CI" MANHOLE	36"	
88	"CJ" MANHOLE	36"	
89	"CK" MANHOLE	36"	
90	"CL" MANHOLE	36"	
91	"CM" MANHOLE	36"	
92	"CN" MANHOLE	36"	
93	"CO" MANHOLE	36"	
94	"CP" MANHOLE	36"	
95	"CQ" MANHOLE	36"	
96	"CR" MANHOLE	36"	
97	"CS" MANHOLE	36"	
98	"CT" MANHOLE	36"	
99	"CU" MANHOLE	36"	
100	"CV" MANHOLE	36"	
101	"CW" MANHOLE	36"	
102	"CX" MANHOLE	36"	
103	"CY" MANHOLE	36"	
104	"CZ" MANHOLE	36"	
105	"DA" MANHOLE	36"	
106	"DB" MANHOLE	36"	
107	"DC" MANHOLE	36"	
108	"DD" MANHOLE	36"	
109	"DE" MANHOLE	36"	
110	"DF" MANHOLE	36"	
111	"DG" MANHOLE	36"	
112	"DH" MANHOLE	36"	
113	"DI" MANHOLE	36"	
114	"DJ" MANHOLE	36"	
115	"DK" MANHOLE	36"	
116	"DL" MANHOLE	36"	
117	"DM" MANHOLE	36"	
118	"DN" MANHOLE	36"	
119	"DO" MANHOLE	36"	
120	"DP" MANHOLE	36"	
121	"DQ" MANHOLE	36"	
122	"DR" MANHOLE	36"	
123	"DS" MANHOLE	36"	
124	"DT" MANHOLE	36"	
125	"DU" MANHOLE	36"	
126	"DV" MANHOLE	36"	
127	"DW" MANHOLE	36"	
128	"DX" MANHOLE	36"	
129	"DY" MANHOLE	36"	
130	"DZ" MANHOLE	36"	
131	"EA" MANHOLE	36"	
132	"EB" MANHOLE	36"	
133	"EC" MANHOLE	36"	
134	"ED" MANHOLE	36"	
135	"EE" MANHOLE	36"	
136	"EF" MANHOLE	36"	
137	"EG" MANHOLE	36"	
138	"EH" MANHOLE	36"	
139	"EI" MANHOLE	36"	
140	"EJ" MANHOLE	36"	
141	"EK" MANHOLE	36"	
142	"EL" MANHOLE	36"	
143	"EM" MANHOLE	36"	
144	"EN" MANHOLE	36"	
145	"EO" MANHOLE	36"	
146	"EP" MANHOLE	36"	
147	"EQ" MANHOLE	36"	
148	"ER" MANHOLE	36"	
149	"ES" MANHOLE	36"	
150	"ET" MANHOLE	36"	
151	"EU" MANHOLE	36"	
152	"EV" MANHOLE	36"	
153	"EW" MANHOLE	36"	
154	"EX" MANHOLE	36"	
155	"EY" MANHOLE	36"	
156	"EZ" MANHOLE	36"	
157	"FA" MANHOLE	36"	
158	"FB" MANHOLE	36"	
159	"FC" MANHOLE	36"	
160	"FD" MANHOLE	36"	
161	"FE" MANHOLE	36"	
162	"FF" MANHOLE	36"	
163	"FG" MANHOLE	36"	
164	"FH" MANHOLE	36"	
165	"FI" MANHOLE	36"	
166	"FJ" MANHOLE	36"	
167	"FK" MANHOLE	36"	
168	"FL" MANHOLE	36"	
169	"FM" MANHOLE	36"	
170	"FN" MANHOLE	36"	
171	"FO" MANHOLE	36"	
172	"FP" MANHOLE	36"	
173	"FQ" MANHOLE	36"	
174	"FR" MANHOLE	36"	
175	"FS" MANHOLE	36"	
176	"FT" MANHOLE	36"	
177	"FU" MANHOLE	36"	
178	"FV" MANHOLE	36"	
179	"FW" MANHOLE	36"	
180	"FX" MANHOLE	36"	
181	"FY" MANHOLE	36"	
182	"FZ" MANHOLE	36"	
183	"GA" MANHOLE	36"	
184	"GB" MANHOLE	36"	
185	"GC" MANHOLE	36"	
186	"GD" MANHOLE	36"	
187	"GE" MANHOLE	36"	
188	"GF" MANHOLE	36"	
189	"GG" MANHOLE	36"	
190	"GH" MANHOLE	36"	
191	"GI" MANHOLE	36"	
192	"GJ" MANHOLE	36"	
193	"GK" MANHOLE	36"	
194	"GL" MANHOLE	36"	
195	"GM" MANHOLE	36"	
196	"GN" MANHOLE	36"	
197	"GO" MANHOLE	36"	
198	"GP" MANHOLE	36"	
199	"GQ" MANHOLE	36"	
200	"GR" MANHOLE	36"	
201	"GS" MANHOLE	36"	
202	"GT" MANHOLE	36"	
203	"GU" MANHOLE	36"	
204	"GV" MANHOLE	36"	
205	"GW" MANHOLE	36"	
206	"GX" MANHOLE	36"	
207	"GY" MANHOLE	36"	
208	"GZ" MANHOLE	36"	
209	"HA" MANHOLE	36"	
210	"HB" MANHOLE	36"	
211	"HC" MANHOLE	36"	
212	"HD" MANHOLE	36"	
213	"HE" MANHOLE	36"	
214	"HF" MANHOLE	36"	
215	"HG" MANHOLE	36"	
216	"HH" MANHOLE	36"	
217	"HI" MANHOLE	36"	
218	"HJ" MANHOLE	36"	
219	"HK" MANHOLE	36"	
220	"HL" MANHOLE	36"	
221	"HM" MANHOLE	36"	
222	"HN" MANHOLE	36"	
223	"HO" MANHOLE	36"	
224	"HP" MANHOLE	36"	
225	"HQ" MANHOLE	36"	
226	"HR" MANHOLE	36"	
227	"HS" MANHOLE	36"	
228	"HT" MANHOLE	36"	
229	"HU" MANHOLE	36"	
230	"HV" MANHOLE	36"	
231	"HW" MANHOLE	36"	
232	"HX" MANHOLE	36"	
233	"HY" MANHOLE	36"	
234	"HZ" MANHOLE	36"	
235	"IA" MANHOLE	36"	
236	"IB" MANHOLE	36"	
237	"IC" MANHOLE	36"	
238	"ID" MANHOLE	36"	
239	"IE" MANHOLE	36"	
240	"IF" MANHOLE	36"	
241	"IG" MANHOLE	36"	
242	"IH" MANHOLE	36"	
243	"II" MANHOLE	36"	
244	"IJ" MANHOLE	36"	
245	"IK" MANHOLE	36"	
246	"IL" MANHOLE	36"	
247	"IM" MANHOLE	36"	
248	"IN" MANHOLE	36"	
249	"IO" MANHOLE	36"	
250	"IP" MANHOLE	36"	
251	"IQ" MANHOLE	36"	
252	"IR" MANHOLE	36"	
253	"IS" MANHOLE	36"	
254	"IT" MANHOLE	36"	
255	"IU" MANHOLE	36"	
256	"IV" MANHOLE	36"	
257	"IW" MANHOLE	36"	
258	"IX" MANHOLE	36"	
259	"IY" MANHOLE	36"	
260	"IZ" MANHOLE	36"	
261	"JA" MANHOLE	36"	
262	"JB" MANHOLE	36"	
263	"JC" MANHOLE	36"	
264	"JD" MANHOLE	36"	
265	"JE" MANHOLE	36"	
266	"JF" MANHOLE	36"	
267	"JG" MANHOLE	36"	
268	"JH" MANHOLE	36"	
269	"JI" MANHOLE	36"	
270	"JJ" MANHOLE	36"	
271	"JK" MANHOLE	36"	
272	"JL" MANHOLE	36"	
273	"JM" MANHOLE	36"	
274	"JN" MANHOLE	36"	
275	"JO" MANHOLE	36"	
276	"JP" MANHOLE	36"	
277	"JQ" MANHOLE	36"	
278	"JR" MANHOLE	36"	
279	"JS" MANHOLE	36"	
280	"JT" MANHOLE	36"	
281	"JU" MANHOLE	36"	
282	"JV" MANHOLE	36"	
283	"JW" MANHOLE	36"	
284	"JX" MANHOLE	36"	
285	"JY" MANHOLE	36"	
286	"JZ" MANHOLE	36"	
287	"KA" MANHOLE	36"	
288	"KB" MANHOLE	36"	
289	"KC" MANHOLE	36"	
290	"KD" MANHOLE	36"	
291	"KE" MANHOLE	36"	
292	"KF" MANHOLE	36"	
293	"KG" MANHOLE	36"	



110 SCREEN FENCE
SCALE: 1/2" = 1'-0"



SECTION ELEVATION

TRANSPLANTING TREES BY MEANS OF HYDRAULICALLY OPERATED TREE PLANTING MACHINES

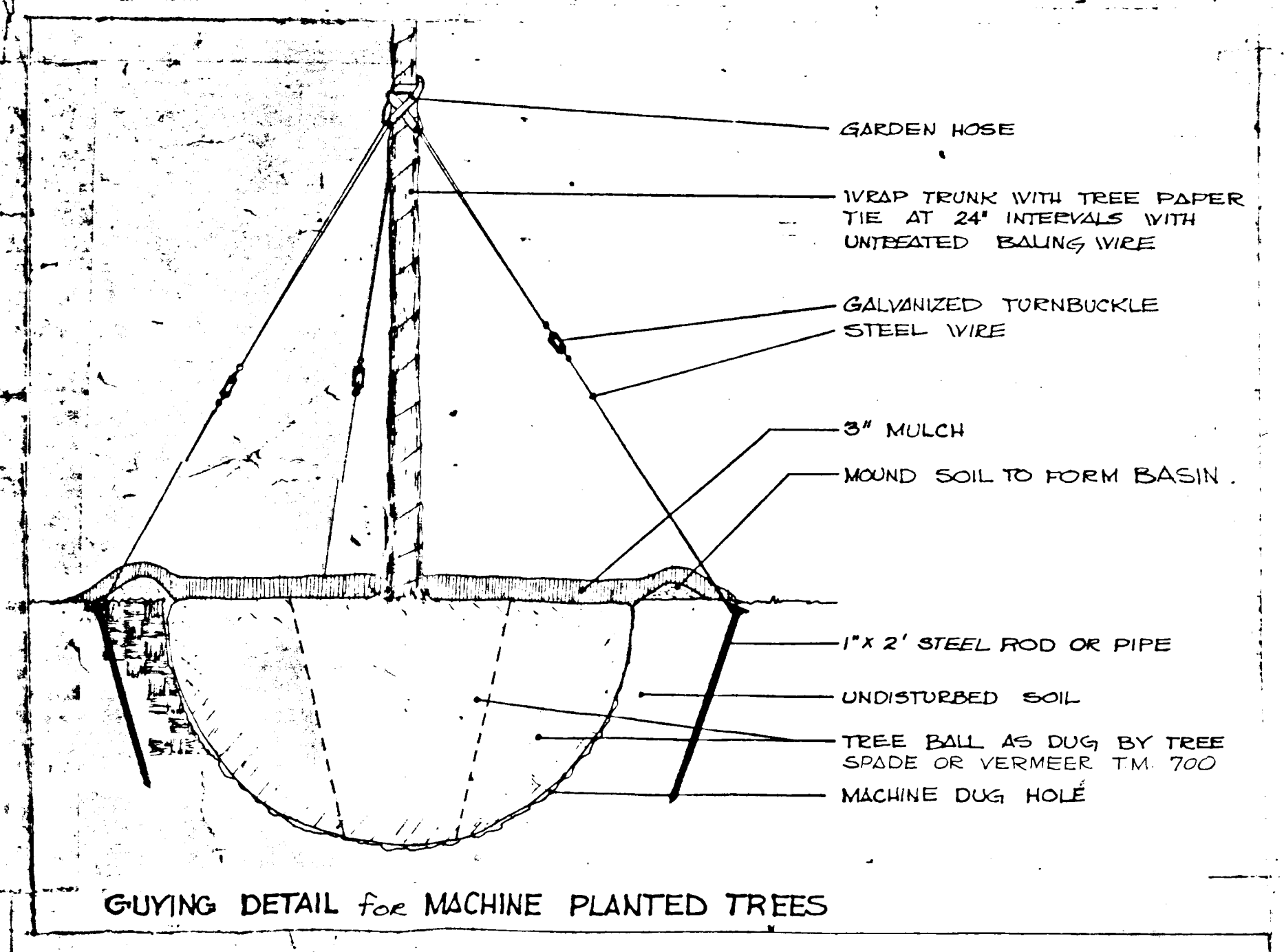
ALL TREES GIVEN IN THE PLANT LIST ARE THE PREFERRED DENUS, SPECIES AND SIZES, HOWEVER SUBSTITUTIONS OF TREES HAVING THE SAME SIZE AND SIMILAR CHARACTERISTICS WILL BE CONSIDERED UPON THE SUBMITTAL OF A WRITTEN REQUEST BY THE CONTRACTOR TO THE LANDSCAPE ARCHITECT. MIXING OF VARIETIES WITHIN THE SAME CONTINUOUS ROW OR GROUPING OF TREES WILL NOT BE PERMITTED UNLESS SO INDICATED ON THE DRAWINGS. TREES MAY BE COLLECTED STOCK PROVIDING THE SHAPE OF THE PLANT IN GENERAL CONFORMS TO THE BRANCHING, CALIBER AND HEIGHT SPECIFICATIONS OF THE AMERICAN ASSOCIATION OF NURSERIES, AND HAS A WELL SHAPED, HEAVY BRANCH STRUCTURE FOR THE SPECIES. EVERGREEN TREES ARE TO HAVE AN INTERDIAMETER NO GREATER THAN 1 1/2" (EIGHTEEN INCHES), AND SHALL BE UNIFORMLY AND WELL SHAPED.

ALL TREES SHALL BE DUG, TRANSPORTED AND REPLANTED AT THE SITE BY MEANS OF A HYDRAULICALLY OPERATED TREE PLANTING MACHINE. SHADE TREES HAVING A CALIBER OF 4"-4 1/2" OR LESS AND EVERGREENS AND FLOWERING TREES 1 1/2"-1 3/4" (TWELVE TO FORTY-TWO FEET) IN HEIGHT OR LESS SHALL BE TRANSPORTED BY THE USE OF A "WEDGEMER TREE SPADE" OR APPROVED EQUAL AND SHALL HAVE A BALL DIAMETER NO LESS THAN 42" (FORTY-TWO INCHES). SHADE TREES HAVING A CALIBER OF 4 1/2"-10" INCLUSIVE, AND EVERGREENS AND FLOWERING TREES IN EXCESS OF 1 1/2" (FOURTEEN FEET) HEIGHT SHALL BE TRANSPORTED BY THE USE OF A "WORMER T.M. 700" TREE PLANTING MACHINE OR APPROVED EQUAL, AND SHALL HAVE A BALL DIAMETER OF NO LESS THAN 7' (SEVEN FEET). IMMEDIATELY FOLLOWING DIGGING, TREES SHALL BE TRANSPORTED TO THE SITE AND PLANTED IN PREVIOUSLY PREPARED HOLES CONFORMING TO THE SHAPE AND DIMENSIONS OF THE TREE BALL. HOLES SHALL BE DUG USING THE SAME MACHINE AS WAS USED IN DIGGING THE TREE IF POSSIBLE.

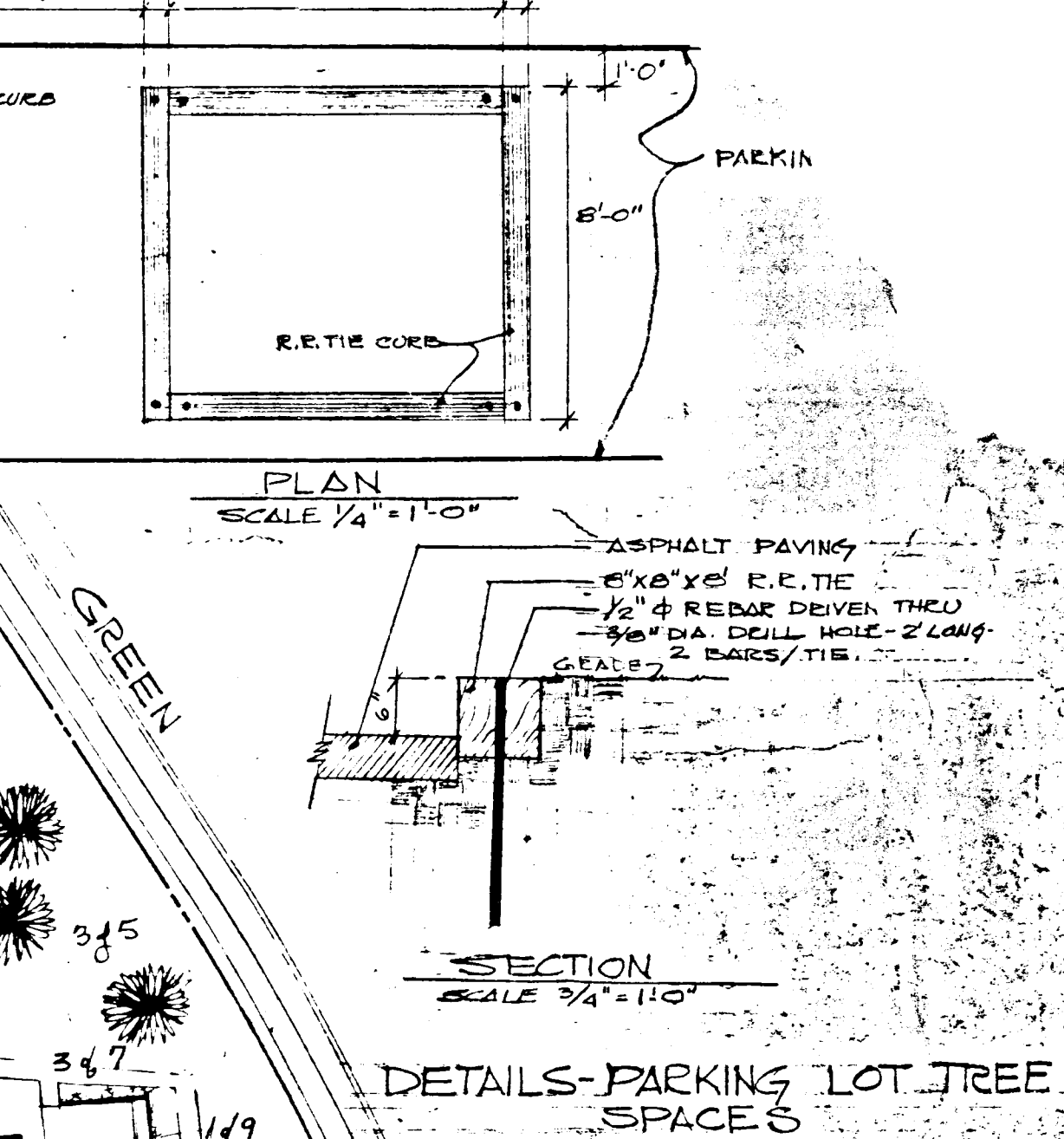
PRIOR TO DIGGING ALL TREES HAVING BRANCHES WITHIN FIVE FEET OF THE GROUND OR LOWER SHALL HAVE THESE LOWER BRANCHES TIED AGAINST THE TREE TRUNK AND WRAPPED IN BURLAP IN ORDER TO ADEQUATELY PROTECT THEM FROM DAMAGE AND SCABBING BY THE MACHINE. SHOULD TREES UNEXPECTEDLY BE SCABBED, THE DAMAGED BARK SHALL BE CUT AWAY AND THE WOUND SHALL BE HEAVILY PAINTED WITH "TREE-KOKE" OR APPROVED EQUAL.

PRIOR TO PLANTING, FERTILIZER IN PACKET FORM SHALL BE PLACED IN THE BOTTOM OF THE HOLE AT THE RATE OF ONE PACKET PER EACH 1/2" CALIBER OF TREE. PACKETS SHALL BE "ROOT CONTACT PACKETS" (T.M.) AS MANUFACTURED BY S AND D PRODUCTS, INC. OF FARMER GARDEN, WISCONSIN, OR AN EQUAL PRODUCT HAVING THE SAME MINIMUM GUARANTEED ANALYSIS.

FOLLOWING PLANTING, ALL TREES SHALL BE THOROUGHLY WATERED PRIOR TO GUYING AND STRAIGHTENING. GUYING AND WRAPPING OF THE TRUNK SHALL BE CARRIED OUT AS SHOWN IN "GUYING DETAILS". GUYING, STRAIGHTENING AND WRAPPING OF THE TRUNK SHALL BE THE FINAL OPERATION.



GUYING DETAIL FOR MACHINE PLANTED TREES



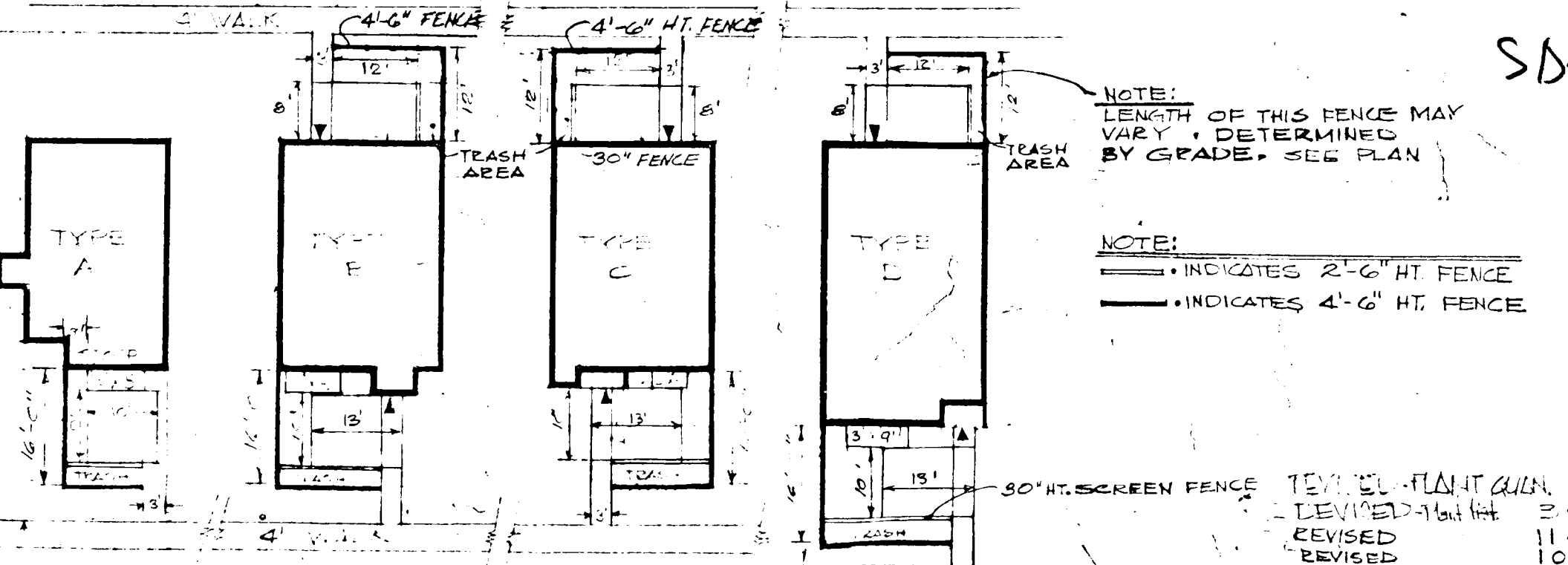
DETAILS-PARKING LOT TREE SPACES

PLANT LIST SUPPLEMENT

QUANTITY	KEY	BOTANICAL NAME	COMMON NAME	SIZE	METHOD
21	7	COTONEASTER SPINOSA	Red Dogwood	5-6" Gal.	SEE SPEC.
25	8	EUONYMUS ALATUS	Spiraea, Japanese	2-3'	5-6" Gal.
49	9	PRUNUS C. LAURANTIN	Sweet Prunella	5-6" Gal.	5-6" Gal.

PLANT LIST

QUANT.	KEY	BOTANICAL NAME	COMMON NAME	SIZE	METHOD
30	1	ACER RUBRUM	Red Maple	5'-6" Gal.	TREE
30	2	QUERCUS PHELLOS	Willow Oak	5'-6" Gal.	MACHINE
25	3	PINUS NIGRA	Austrian Pine	10-12 HT.	SEE SPEC.
5	4	PINUS THUNBERGII	Japan. Black Pine	10-12 HT.	
15	5	PINUS NIGRA	Austrian Pine	8'-10 HT.	
19	6	PINUS THUNBERGII	Japan. Black Pine	8'-10 HT.	



TYPICAL FRONT & REAR YARD PLANS
SCALE: 1" = 20'

APPROVED
PLANNING BOARD
OF HOWARD COUNTY
DATE: Feb 21, 1973
[Signature]

SDP-69-06

LOCATIONS FOR WALKWAY STREET LIGHTS
V.W.L. 10/1, LOT 1
LANDSCAPE DEVELOPMENT
PATIO, WALKWAY & STREET LIGHTING, PLAN SCALE 1/32"
T. D. GIOFIVANTI & ASSOCIATES
LANDSCAPE ARCHITECTURE - SITE PLANNING
1220 EAST-WEST HIGHWAY, SILVER SPRING, MARYLAND
THE TOWNE APARTMENTS
AT COLUMBIA
COLUMBIA DEVELOPMENT ASSOCIATION
1220 EAST-WEST HIGHWAY, SILVER SPRING, MARYLAND
SDP-69-05