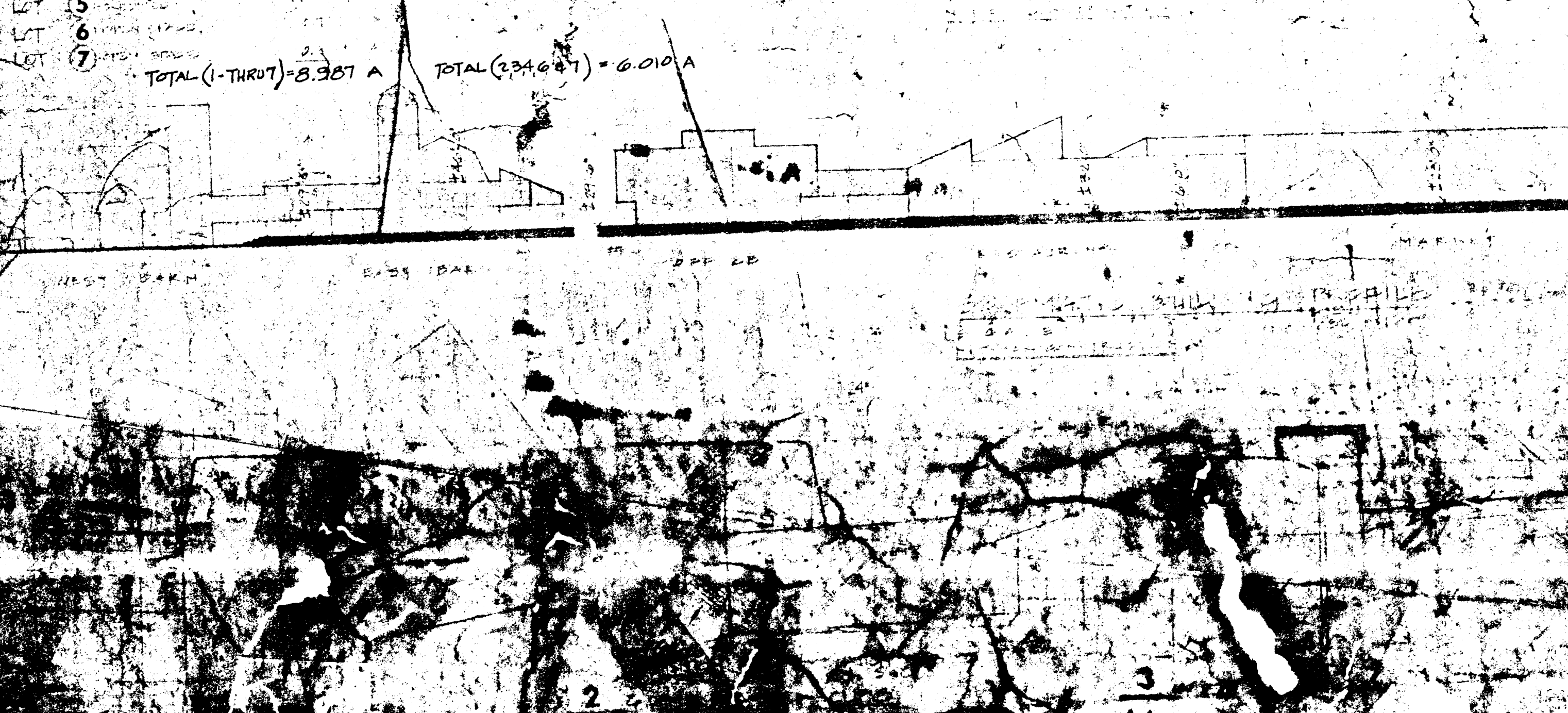
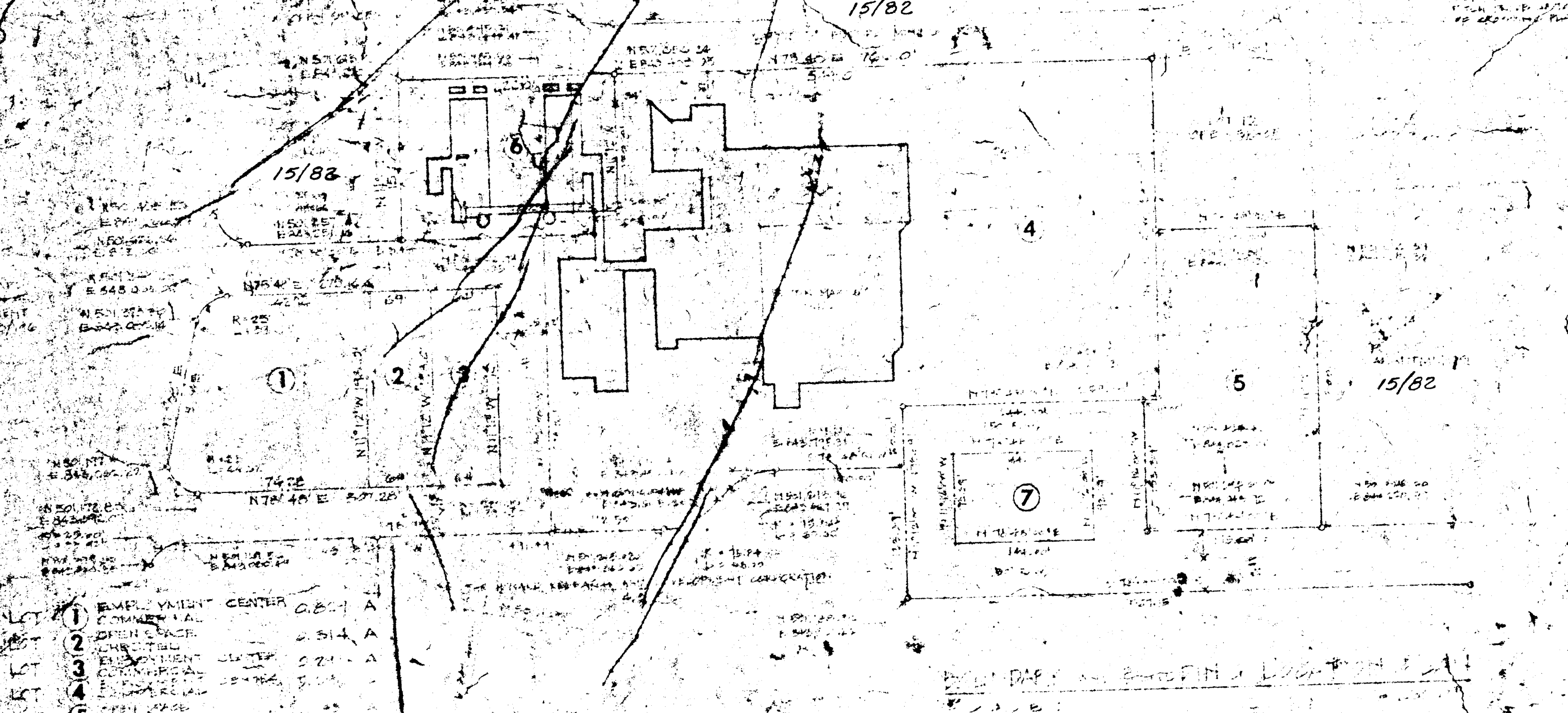
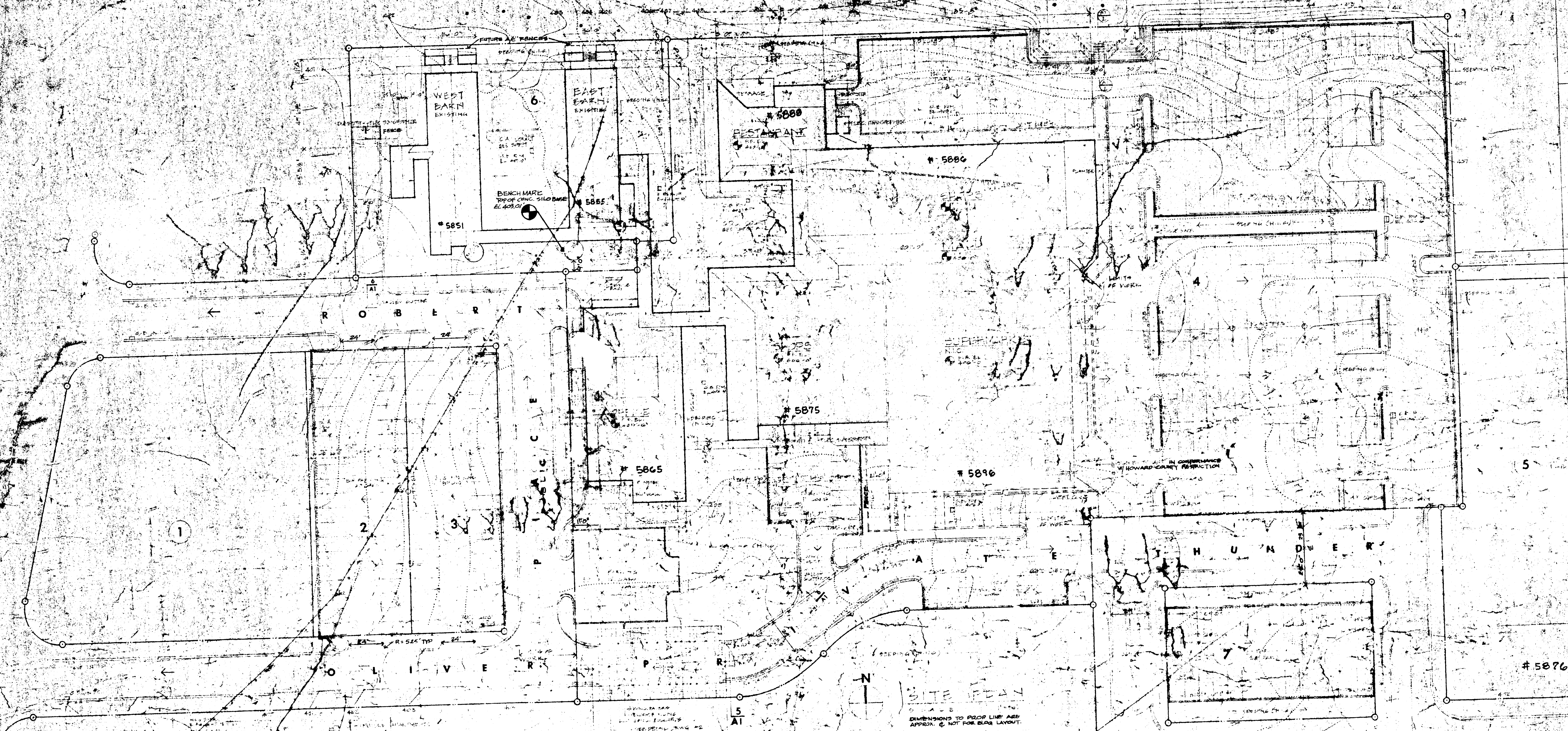


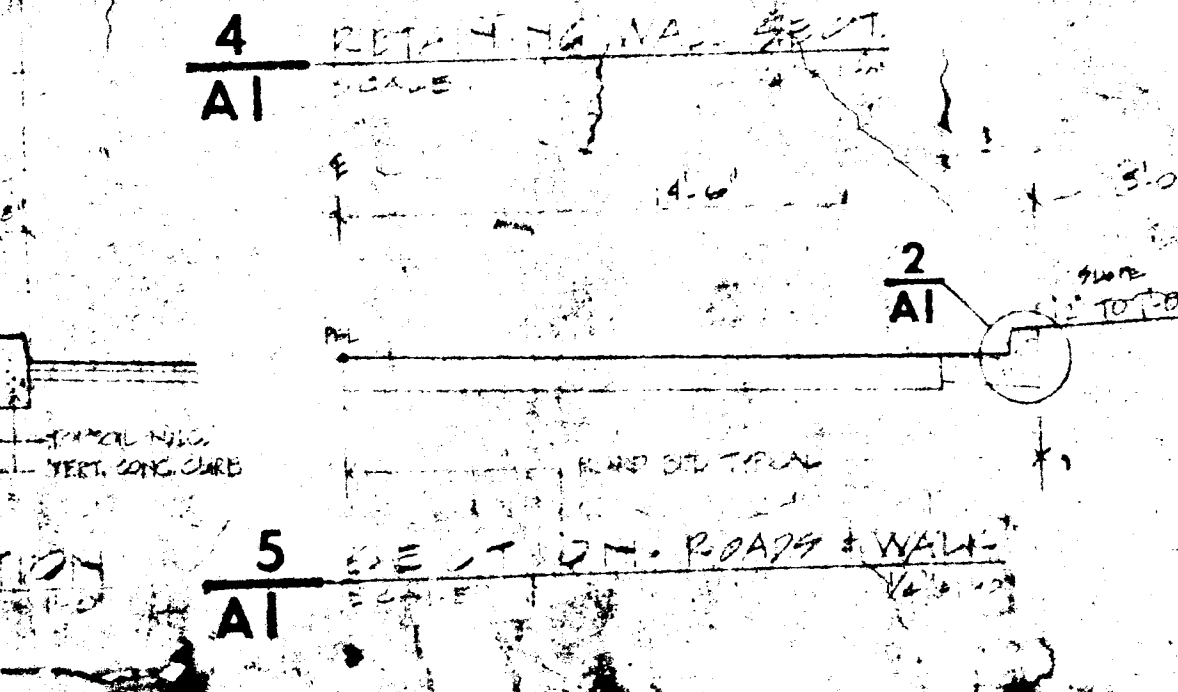
AS SHOWN
APPROXIMATE
4/13/60
PER H.C.P.C.

20' DRAINAGE & UTILITY EASEMENT
AS SHOWN IN PLAT BOOK IS TO BE
DATED 12/22/60 & EASEMENT
SHALL BE FILED & CONVEYED UPON
DEVELOPMENT OF LOT 12.



PARKING REQUIREMENT
4.0 SPACES
5.0 SPACES
6.0 SPACES
7.0 SPACES
8.0 SPACES
9.0 SPACES
10.0 SPACES
11.0 SPACES
12.0 SPACES
13.0 SPACES
14.0 SPACES
15.0 SPACES
16.0 SPACES
17.0 SPACES
18.0 SPACES
19.0 SPACES
20.0 SPACES
21.0 SPACES
22.0 SPACES
23.0 SPACES
24.0 SPACES
25.0 SPACES
26.0 SPACES
27.0 SPACES
28.0 SPACES
29.0 SPACES
30.0 SPACES
31.0 SPACES
32.0 SPACES
33.0 SPACES
34.0 SPACES
35.0 SPACES
36.0 SPACES
37.0 SPACES
38.0 SPACES
39.0 SPACES
40.0 SPACES
41.0 SPACES
42.0 SPACES
43.0 SPACES
44.0 SPACES
45.0 SPACES
46.0 SPACES
47.0 SPACES
48.0 SPACES
49.0 SPACES
50.0 SPACES
51.0 SPACES
52.0 SPACES
53.0 SPACES
54.0 SPACES
55.0 SPACES
56.0 SPACES
57.0 SPACES
58.0 SPACES
59.0 SPACES
60.0 SPACES
61.0 SPACES
62.0 SPACES
63.0 SPACES
64.0 SPACES
65.0 SPACES
66.0 SPACES
67.0 SPACES
68.0 SPACES
69.0 SPACES
70.0 SPACES
71.0 SPACES
72.0 SPACES
73.0 SPACES
74.0 SPACES
75.0 SPACES
76.0 SPACES
77.0 SPACES
78.0 SPACES
79.0 SPACES
80.0 SPACES
81.0 SPACES
82.0 SPACES
83.0 SPACES
84.0 SPACES
85.0 SPACES
86.0 SPACES
87.0 SPACES
88.0 SPACES
89.0 SPACES
90.0 SPACES
91.0 SPACES
92.0 SPACES
93.0 SPACES
94.0 SPACES
95.0 SPACES
96.0 SPACES
97.0 SPACES
98.0 SPACES
99.0 SPACES
100.0 SPACES

PARKING REQUIREMENT
4.0 SPACES
5.0 SPACES
6.0 SPACES
7.0 SPACES
8.0 SPACES
9.0 SPACES
10.0 SPACES
11.0 SPACES
12.0 SPACES
13.0 SPACES
14.0 SPACES
15.0 SPACES
16.0 SPACES
17.0 SPACES
18.0 SPACES
19.0 SPACES
20.0 SPACES
21.0 SPACES
22.0 SPACES
23.0 SPACES
24.0 SPACES
25.0 SPACES
26.0 SPACES
27.0 SPACES
28.0 SPACES
29.0 SPACES
30.0 SPACES
31.0 SPACES
32.0 SPACES
33.0 SPACES
34.0 SPACES
35.0 SPACES
36.0 SPACES
37.0 SPACES
38.0 SPACES
39.0 SPACES
40.0 SPACES
41.0 SPACES
42.0 SPACES
43.0 SPACES
44.0 SPACES
45.0 SPACES
46.0 SPACES
47.0 SPACES
48.0 SPACES
49.0 SPACES
50.0 SPACES
51.0 SPACES
52.0 SPACES
53.0 SPACES
54.0 SPACES
55.0 SPACES
56.0 SPACES
57.0 SPACES
58.0 SPACES
59.0 SPACES
60.0 SPACES
61.0 SPACES
62.0 SPACES
63.0 SPACES
64.0 SPACES
65.0 SPACES
66.0 SPACES
67.0 SPACES
68.0 SPACES
69.0 SPACES
70.0 SPACES
71.0 SPACES
72.0 SPACES
73.0 SPACES
74.0 SPACES
75.0 SPACES
76.0 SPACES
77.0 SPACES
78.0 SPACES
79.0 SPACES
80.0 SPACES
81.0 SPACES
82.0 SPACES
83.0 SPACES
84.0 SPACES
85.0 SPACES
86.0 SPACES
87.0 SPACES
88.0 SPACES
89.0 SPACES
90.0 SPACES
91.0 SPACES
92.0 SPACES
93.0 SPACES
94.0 SPACES
95.0 SPACES
96.0 SPACES
97.0 SPACES
98.0 SPACES
99.0 SPACES
100.0 SPACES



RESTRICTION CONTRACTS
1. THE OWNER SHALL BE RESPONSIBLE FOR OBTAINING ALL NECESSARY PERMITS AND APPROVALS FROM THE APPLICABLE AGENCIES AND AUTHORITIES.
2. DISTURBED EARTH NOT OTHERWISE INDICATED SHALL BE REDEVELOPED OR LANDSCAPED IN CONJUNCTION WITH H.C.P.C. & THE HOWARD SOIL CONSERVATION DISTRICT.
3. NO FENCES OR WALLS ON THIS SITE EXCEPT AS NOTED.
4. ALL DRIVES & PARKING AREAS TO BE OWNED & MAINTAINED PRIVATELY.

OWNER & DEVELOPER
HOWARD RESEARCH & DEVELOPMENT
VILLAGE OF CROSS ROAD
BALTIMORE, MD. 21202

APPROVED BY THE BOARD OF SUPERVISORS
12/22/60

APPROVED BY THE BOARD OF SUPERVISORS
1-9-60

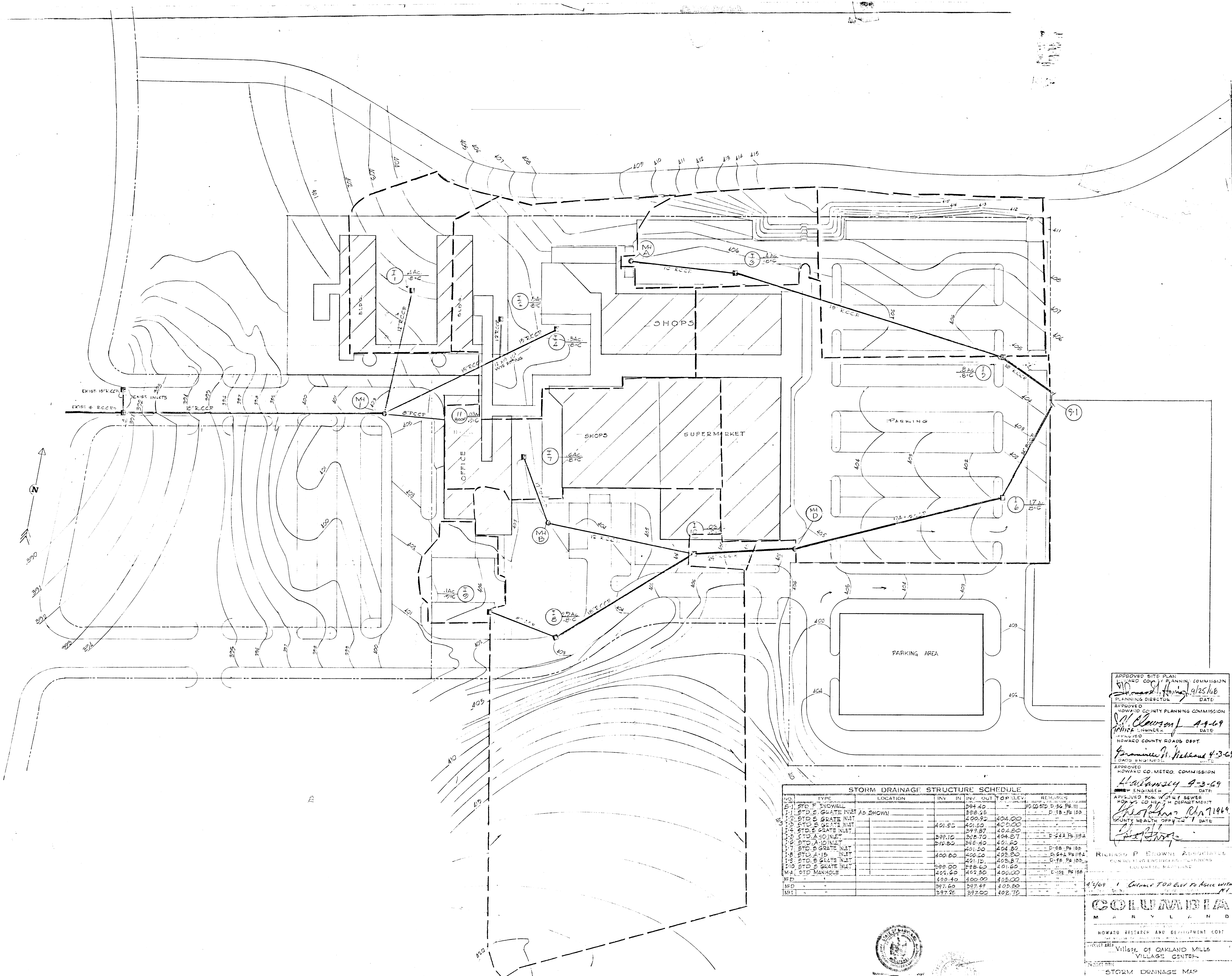
APPROVED BY THE BOARD OF SUPERVISORS
2-20-60

APPROVED BY THE BOARD OF SUPERVISORS
2-23-60

APPROVED BY THE BOARD OF SUPERVISORS
4-9-60

LOUIS SAUER ARCHITECT
201 CHANCELLOR ST. PHILADELPHIA, PA.

THE HOUSE COMPANY
THE VILLAGE OF CROSS ROAD
BALTIMORE, MD.



STORM DRAINAGE STRUCTURE SCHEDULE

NO.	TYPE	LOCATION	INV.	IN	OUT	TOP LEV.	REMARKS
1	STO. F. ENDWALL		394.40				
2	STO. E. GRATE INLET	AS SHOWN	398.65				D-28 PR 158
3	STO. B. GRATE INLET		400.92			404.00	
4	STO. E. GRATE INLET		401.50			404.00	
5	STO. A. INLET		399.10			404.00	D-22A PR 158
6	STO. A. INLET		398.80			401.50	
7	STO. E. GRATE INLET		401.50			404.00	D-28 PR 158
8	STO. A. INLET		400.80			405.00	D-22A PR 158
9	STO. E. GRATE INLET		401.15			405.75	D-28 PR 158
10	STO. E. GRATE INLET		399.00			401.60	
M1	STO. MANHOLE		401.50			404.00	D-158 PR 158
M2			400.40			405.00	
M3			397.60			405.50	
M4			397.25			405.75	

APPROVED SITE PLAN
 HOWARD COUNTY PLANNING COMMISSION
 9/25/68
 PLANNING DIRECTOR DATE
 APPROVED
 HOWARD COUNTY PLANNING COMMISSION
 4-9-69
 ENGINEER DATE
 HOWARD COUNTY ROADS DEPT.
 4-3-69
 ENGINEER
 APPROVED
 HOWARD CO. METRO. COMMISSION
 4-3-69
 ENGINEER DATE
 APPROVED FOR WORK BY SEWER
 HOWARD COUNTY HEALTH DEPARTMENT
 4-7-69
 COUNTY HEALTH DEPT. CHIEF DATE

RICHARD P. BROWN ASSOCIATES
 CONSULTING ENGINEERS ARCHITECTS
 1100 WASHINGTON BLVD.
 WASHINGTON, D.C. 20004
 4/69 1 Change TOB Elev to have with
 HOWARD COUNTY PLANNING COMMISSION
 HOWARD COUNTY HEALTH DEPARTMENT
 HOWARD COUNTY ROADS DEPT.
 HOWARD CO. METRO. COMMISSION
COLLETTA
 MARYLAND
 HOWARD RESEARCH AND DEVELOPMENT CENTER
 VILLAGE OF OAKLAND MILLS
 VILLAGE CENTER
 STORM DRAINAGE MAP
 M-H-D
 7 Mar 69
 D-11-1-17

